

Cambridge



Crystal Ball

ISSUE no. 7

NOVEMBER 1, 1973

Published monthly by the NATIONAL CAMBRIDGE COLLECTORS, Inc.
To encourage and to report the discovery of the elegant and boundless product
of the Cambridge Glass Company, Cambridge, Ohio



SECTION OF SHIPPING DEPT.

Barrels assembled ready to load in railroad cars for shipment to all parts of the world.

CAMBRIDGE CRYSTAL BALL

P.O. Box 121
Cambridge, Ohio 43725

Official Publication of

NATIONAL CAMBRIDGE COLLECTORS, Inc.

President Charles Upton
Vice President. . . . Ruth Forsythe
Secretary Richard Pavlov
Treasurer John Wolfe

CLASSIFIED ADVERTISING RATES

5¢ per word - \$1.00 minimum

We cannot mix type sizes in classified Ads. Abbreviations and initials will count as words. Payment in full must accompany all ads.

DISPLAY ADVERTISING RATES

	Members	Non-Members
1/8 page . . .	\$ 4.00	\$ 6.00
1/4 page . . .	7.00	10.00
1/2 page . . .	12.00	18.00
3/4 page . . .	17.00	25.00
full page . . .	22.00	33.00

Advertising copy must be in our hands by the 15th. of the month to assure publication in that month's issue. Advertisements containing reproductions will not knowingly be accepted unless clearly stated.

Cambridge Crystal Ball assumes no responsibility for items advertised and will not be responsible for errors in price description or other information.

Ads should be sent to:

DALE SNODE
Route 6
Cambridge, Ohio
43725
(614) 432-4619

NOTIFY US IMMEDIATELY OF ANY CHANGE OF ADDRESS

Address all letters concerning membership to the attention of:

JOHN WOLFE
P.O. Box 121
Cambridge, Ohio 43725

FROM THE DESK OF -

President Charles Upton

Cambridge Glass has won several awards such as the Jamestown Exposition and the Golden West Exposition in 1907. The fine glassware from the Cambridge Glass Company has graced the table of Kings and Queens throughout the world and was considered one of the finest quality glasses. The many different, beautiful cuttings, by expert craftsmen is something that cannot be reproduced today and the beautiful etchings such as Rose Point, Chantilly and Wild Flower were much sought after by the noblemen of the world.

Showrooms were maintained in New York City, Chicago, Los Angeles, Denver, Philadelphia and Dallas. The company had representatives in Boston, Massachusetts; Lancaster, Ohio; Portland, Oregon; Seattle, Washington; St. Louis, Missouri; Cincinnati, Ohio; Omaha, Nebraska; Milwaukee, Wisconsin; Philadelphia, Penn.; Jacksonville, Fla.; Indianapolis, Indiana; New Orleans, La; London, England; Havana, Cuba; Toronto, Canada; Alta, Canada; Melbourne, Australia; Sydney, Australia and Wellington, New Zealand. As you can see, with this kind of exposure, Cambridge Glass was known and shipped the world-over.

The company shipped its fine glassware in wooden barrels which were made at the factory, and straw was used for packing. Old pictures of the interior of the factory show the workers making the barrels and packing the glassware with the bales of straw beside them. Other pictures show the workers doing the hand decorating, hand cutting and engraving along with the grinding and

Continued on page 3

SASE - When requesting information, please send a Self Addressed Stamp-
ed Envelope.

Colors in Cambridge

... by Jabe Tarter

Much controversy has been rampant of late on the question of Cambridge having made lamps for the Aladdin Lamp Co. It just isn't so. Even though Aladdin lamps are constantly passed off as Crown Tuscan at every show, flea market and antique shop where little research has been done.

At about the same time that Cambridge was making items for the Yardley Cosmetic Co. of England, and the glass was a tan - pink, the Aladdin Lamp Co. of Alexandria, Indiana was marketing lamps with something of the same appearance.

Some of the Yardley glass did have a close similarity to some of the lamps from Aladdin. The so - called sale and pepper shakers from Cambridge, made exclusively for Yardley Co., does have a tan appearance. And because no original tops can be found for them, Cambridge Collectors are on the cruise to find what never existed in the first place.

This tan-pink, somewhat slag glass was made for Yardleys for talcum powder and celeoid tops.

Aladdin claims to have been the only glass house in the world to be able to mix milk white and amber and not come out with a marbelized glass.

This is the supposed formula for their glass. They boast of the tan - pink resembling flesh tones, but no slag-type.

At the time Cambridge was making its Royal Crown Tuscan, Aladdin hadn't even thought of an opaque pink glass. And Cambridge was so busy supplying dealers all over the world, they didn't have time to worry about what other glass houses were making.

A. J. Bennett, with his corps of fine artists, was famous for his beauty in glass. Whether it was opaque, or colored crystal, it was tops in the field. At the time Cambridge was tops in glass, Heisey, Tiffin and Fostoria were the only true competitors.

Cambridge has never reported electric lamps in any of the patterns coming from Aladdin. And the owners of Aladdin, Formerly of Alexandria, now of Tennessee, would be much chagrined to know that proper credit is not being given their glass.

Most of the electric glass lamps from Cambridge in the pink tones are in an urn or trumpet shape. They had no desire to copy anyone else. And their glass was so individualistic that no difficulty is encountered when comparing it with other glass.

One must do a certain amount of research, however. But it is possible to do that merely by reading the periodicals and the research done by someone else.

If a beautiful lamp is offered you, and the dealer swears it was made in Cambridge for Aladdin, just remember - it ain't so. Neither firm would appreciate the wrong attribution.

From The Desk of - cont. from page 2

polishing departments. Only the perfect pieces were permitted to be shipped to their customers. The pieces which were not considered to be good enough to be sold as fine Cambridge Glassware were dumped into a bin and sold to the employees by the pound or were carried out under coats or in lunch pails. There were over 5000 different molds to choose from and multiplying this by the 42 different colors and many different decorations, it would be feasible to come up with over 4,000,000 different variations. It is with this wide range of choice that the Cambridge Glass was the most sought after and is fast becoming the leading collectable glass of today.

(continued next month)

COLLECTORS CORNER

By BOB COYLE

The first quarterly meeting of the National Cambridge Collectors, Inc., was held at the Y.M.C.A. in Cambridge, Ohio on September 16, 1973.

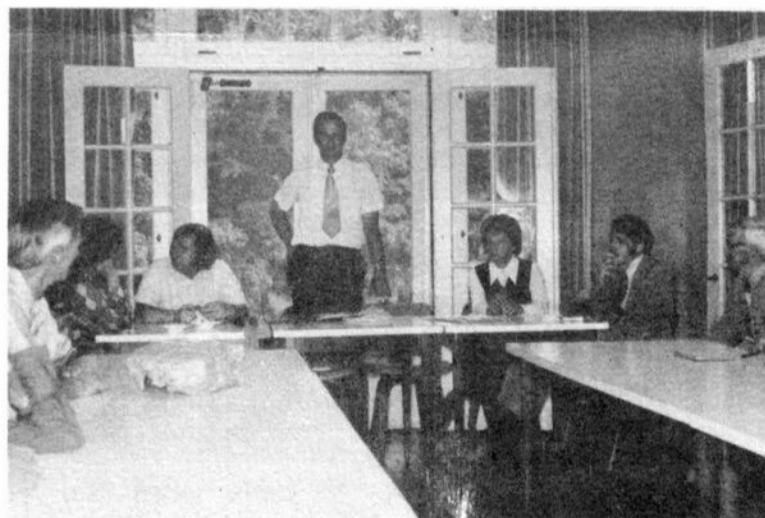
Approximately fifty members were in attendance, including several from as far away as Michigan and Pennsylvania.

An enjoyable afternoon was spent with several former employees of the Cambridge Glass Co. who were invited to attend the meeting by our President, Charles Upton.

Members were encouraged to bring glass items to the meeting for discussion and identification. Several interesting pieces appeared - some being Cambridge, some not. The outstanding item seemed to be the Opaque Wedgewood Blue large footed Shell dish brought by Frank and Vicki Wollenhaupt of Dayton, Ohio. This piece was marked and certainly was an unusual shade of blue.

Another rare item was a footed cheese dish in Nata Green Willow on clear Crystal shown by Dave and Sue Rankin of Englewood, Ohio. The Wollenhaupts tell us they have a dinner plate, also in the Green Willow. Sounds like Dayton, Ohio is harboring some "Cambridge Goodies."

The afternoon was climaxed by refreshments consisting of coffee and a beautiful sheet cake decorated with the Cambridge Glass Co., Seal. A photo of this spectacular cake is shown for your enjoyment.



NATIONAL CAMBRIDGE



COLLECTORS INC.

A member from Yonkers, N. Y. writes to us with several good finds. One of these was a Crystal Budda Lamp with original shade of embroidery on net. This rare item quickly made its way into an ever increasing Cambridge Glass collection in Newark, Ohio. Other items included in our note from New York was a pair of Frosted Scot -

If you know of any member who is not receiving their monthly newsletters, please contact: Richard Pavlov
623 Wheeling Ave.
Cambridge, Ohio
43725

Give the name and correct address and we will check it against our mailing list to see if we have it correct. We don't want you to miss a single issue.

CLASSIFIED

ROBERT H. COYLE
"Collectible Antiques"
441 MT. VERNON RD.
NEWARK, OHIO 43055

1. Ebony Cambridge Square Candleblocks, Welker Reprint pg. 17, 2 3/4 ", pr. \$25.00
2. Apple Green Figure Flower Frog 13 1/2" high, Welker Reprint pg.35, #513. \$68.00
3. Crown Tuscan Nude Stem Compote with Shell top. 8" high, good color. \$85.00
4. Moonlight Blue Figure Flower Frog, Welker Reprint pg. 35, #518. \$75.00
5. White Milk Glass Nautilus Shell Flower Holder, Welker Reprint pg. 47, #46. \$40.00
6. Royal Blue #3400/141 Helmet shape Pitcher, Clear handle, rare. \$85.00
7. Carmen Everglades two holder Candlesticks, Welker Reprint, pg. 71, #3, very rare, pair \$250.00
8. Rubina Sweet Pea Vase, 5" high, excellent color. \$90.00
9. Rosepoint footed Ice Tea Glasses, #3121 stem (6) each \$11.00
10. Moonlight Blue Georgian tumblers (6) each \$6.00

All items Postpaid - S.A.S.E. Please
All items subject to prior sale.

Now Available: THE HEISEY ANIMALS, ETC. BOOK II
by Robert Coyle, Lynne Bloch, and Art Hartman
\$3.00 per copy Postpaid

You Are Invited To Visit My Booth At The Following Shows.....
Nov. 2,3,4, Augustines Restaurant, Belleville, Illinois
Nov. 15, 16,17, State Farm Show Bldg., Harrisburg, Pa.
Dec. 6,7,8,9, Veterans Memorial Bldg., Columbus, Ohio
Dec 15,16,17, Americana Hotel, New York, N.Y.

Patterns

by Ruth Forsythe



PEACOCK

Peacock Jug
Pressed

Hello:

The months certainly are flying by and we are now six months old. Our first general meeting, September 16, 1973, definitely established the fact that we are a friendly and enthusiastic group. All of us eager to learn all we can about beautiful Cambridge glass. And, here comes another great pattern - PEACOCK.

I believe the persons responsible for the many designs in Cambridge glass, must have spent hours in serious thought to come up with a pattern that would have great appeal to the buying public.

S-o-o-, PEACOCK, one of the most colorful and most beautiful of all birds. Vainglorious, symbol of immortality, nostalgia (remember the trips to the zoo and all the excitement when the vain Mr. Peacock would spread his tail to the fullest extent and strut for all to admire?) The decision must have been that this pattern would have to be a winner.

The PEACOCK design has been used by many glass companies. The most common being an etched pattern. Cambridge PEACOCK is a pressed pattern of the Near Cut trade mark, although not necessarily marked. The tail of the peacock is curved gracefully amidst six petal flowers, with the flowers and leaves running vertically almost the full length of the jug as pictured.

Remember, PEACOCK is a pressed pattern which is easily identified, but very scarce; a real treasure if you are fortunate enough to find one.

A tremendous help in learning Cambridge glass, is Judy and Harold Bennett's museum. If you have not already been there, plan to make it a must. If you have been there, plan to go again and again. It is a great accomplishment to put together so much beauty in pattern and color and display it to perfection. The address is 812 Jefferson Avenue, Cambridge, Ohio. Hours 10:00 A.M. to 5:00 P.M.

* * * * *

FOR SALE!

- * 12" Amber Swan \$250.00
- * 6 Nude Stem Goblets
- * 7 3/4" high - 1 green,
- * 2 Royal Blue; 3 Amethyst
- * each \$ 38.50
- * 4 Nude Stem compotes
- * 3 Blue - 1 Red . . each \$ 75.00
- * 2 Royal Blue ivy balls. ea. \$ 45.00
- * 1 Amethyst ivy ball. . . . \$ 45.00
- * Primrose comport
- * (Bennett #45, row 3 #4. . \$ 60.00
- * Pair Blue Milk seashells
- * (#45, row 2 #1 & 5). .ea. \$125.00
- * Carmen decanter
- * (plate 38, row 2 #4. . . \$ 65.00

* JOY'S ANTIQUES
2508 N. Dixie Freeway
New Smyrna Beach, Fla. 32069
Phone 904-427-1989

* * * * *

* Wanted: the bottoms of the Ritz Blue
* and the Amber covered turkey in the
* large size. You buy my tops, or I'll
* buy your bottoms.

* Jabe Tarter
* Akron Beacon Journal
* Akron, Ohio 44328



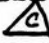
THE BOOK
of
DUNCAN glass

17 ppgs. of color
The HISTORY of Duncan & Miller
The Story of the famous Swans
Plus -- a reprint 1900 Catalog
Plus -- an exciting introduction to the
1920-30 patterns
ORDER FROM: the author - Frances
Bones, Box 45642, Houston TX 77045
\$9.95 plus 25 ¢ postage. Dealers 10%
courtesy disc, send Tax number

FOR SALE - CAMBRIDGE GLASS

- NUDE STEM COCKTAILS - Crystal Bowl,
Ebony Stem (2) \$30.00
- LETTER HOLDER, PEN HOLDER - Both
Apple Green-gold Dresden pattern.
Some wear on gold - Lovely. \$22.50
- CORINTH 80 oz. Ball Jug - Optic -
Pink applied crystal handle \$18.00
- APPLEBLOSSOM etched Gold Crystal
Several pieces Write
- ROSEPOINT Crystal: Stem #3500
4 Cocktail oysters. . . each \$10.00
2 10 oz. Goblets . . . each 13.50
2 7 oz. tall sherberts ea. 13.00
- ROSEPOINT Crystal: Stem #3121
2 10 oz. goblets . . . ea. \$13.50
2 6 oz. tall sherberts ea. 13.00
2 10 oz. footed tumbler ea. 13.50
- Blank footed shaker #3400 \$2
- Blank footed shaker #3400 . . \$12.00
- Pitcher: Doulton-type jug . . \$75.00
- TORTE TRAY - Blank number un-
known, -unlisted 17 1/2" dia-
meter-center of molded con-
centric circles, edges plain,
slightly cupped, Rosepoint
etched band - very wide. A
Magnificent piece! \$50.00

FRANCES BONES
P.O. Box 45642
Houston, Texas 77045

- * 1. Royal Blue 80 oz. Pitcher,
Welker Reprint, pg. 22, #3400-38
\$37.50
- * 2. Amber Farber Bros. 32 oz. Decanter
w/stopper, Welker 22, 3400-92
Six 2 1/2 oz. Glasses, Farber Holders
Welker 22, 3400-92 \$36.00
- * 3. Eight Pink Decagon Two-Handled
Soups, Eight Liners. All Sixteen
Pieces Marked  \$40.00
- * 4. Crystal Gadroon Footed Bowl, Etched
ROSEPOINT, 10"D x 3 3/4"H.
Welker 41, 3500-28 \$30.00
- * 5. Crystal Platter, Etched DIANE,
Two-Handled, 11".
McLean Reprint, pg.9, #3400-35.
\$22.00
- * 6. Crystal Mayo Bowl, Pristine, Etched
CHANTILLY, 5 1/2" d.
McLean 8B, 281 (No Plate) \$ 7.00
- * 7. Crystal Gadroon 4-Section Relish,
Silver Overlay in Floral Design.
Welker 42, 3500-70. \$15.00
- * 8. Six Amber Footed Goblets, 12 oz.
Iced Tea, Crystal Stem & Foot,
Stem 3111, Etched GLORIA
McLean 52, 3111. \$48.00
- * 9. Crown Tuscan 8" Oval Shell Dish,
4 Footed. McLean 30, SS31 \$35.00
- * 10. Royal Blue Ivy Ball, Crystal Ring
Stem & Foot.
McLean 30, 1236 \$32.00
- * 11. Crystall Cambridge Square 3 pc. Set,
Bowl-Oval, 10" x 8"
McLean 36C, 3797-48
Two Cupped Candlesticks, 4 1/2" d.
McLean 36C, 3797-67 \$18.00

All Items Postpaid and Insured.
Satisfaction Guaranteed.

Paul & Ginny Henderson
1072 Green Street
Iselin, New Jersey 08830

N.J. Residents Add 5% Sales Tax.

Collectors Corner

Continued from page 4

tie Bookends, an Amber Two-Kid Flower Frog, a Custard Lady Flower Frog, a Rubina three-piece Console Set, a Rubina tumbler, and a Moonlight Blue Oriental Lady Flower Frog. The latter, since being shipped to Neward, Ohio, was discovered to be the #1115 Flower Frog which is shown on page 35 of Welker's reprint and was not the extremely rare Oriental one.

Let us take this opportunity to again advise all our readers the importance for all Cambridge Collectors and Dealers to see and study the museum in Cambridge, Ohio owned by Harold and Judy Bennett. There are so many pieces of Cambridge Glass shown in the Museum, that to date have not appeared in any of the current reference books on Cambridge Glass. By becoming aware of these many pieces, it can possibly prevent some very costly mistakes or errors.

A recent Auction near Cambridge, Ohio produced some very nice pieces of Cambridge Glass. Prices were varied, the high being a Rubina Honey-comb bowl at \$110.00 and the low being

a plain Carmen vase which went for the mere sum of \$3.00. Several prominent Cambridge Collectors seemed to be fast asleep when a very rare pair of Mt. Vernon Candlesticks in Milk Blue went under the gavel.

A Columbus, Ohio member reports recently acquiring a beautiful Crown Tuscan Covered Urn with painted rose decoration.

Another of our members recently found an Amber Oriental Figurine and only two days later topped it with the purchase of a Dolphin Handled Console Bowl with Mt. Vernon base in Ritz Blue. Where does one go from here?

Let's keep the letters coming in for the more info we get from all of you, the more you will have to read about.

See you next month at "Collectors Corner!"

Robert Coyle
441 Mt. Vernon Road
Newark, Ohio 43055

National Cambridge Collectors, Inc.
P.O. Box 121
Cambridge, Ohio 43725
Address Correction Requested