

Cambridge



Crystal Ball

ISSUE No. 10

FEBRUARY 1974

Published monthly by the NATIONAL CAMBRIDGE COLLECTORS, Inc.
To encourage and to report the discovery of the elegant and boundless product
of the Cambridge Glass Company, Cambridge, Ohio

FROM THE DESK OF -

President Charles Upton

We seem to have a couple of writers with ESP powers, don't we? I can go along with most of their predictions, but I am still partial to Royal Blue.

I have really enjoyed the show-and-tell portions of the quarterly meetings in the past and I am sure that there will be more most interesting articles that will continue to show up at these meetings. We plan a show-and-tell session for the convention and I am sure that there will be many very interesting items from all over the country that will be brought out of their wrappings. It will be a real interesting part of the convention for everyone.

The Board of Directors have made plans for the convention, which will be the first National Convention for the National Cambridge Collectors, Inc.. They promise and guarantee that you will see more Cambridge Glass at one time, than you have ever seen before. It is hopeful that you will be educated in identifying Cambridge Glass when you leave. The committees have been working very hard to plan an interesting and diversified program. 1

I hope that you will try to make plans to spend some time with us during the week-end of April 26, 27 & 28. The show will be bigger and better this year with 35 select, quality dealers. I am sure that Cambridge Glass will dominate the show. How interesting!

While the convention will be held at the Holiday Inn here in Cambridge, there are several other fine motels within a short distance of the show. I will list these motels, if you wish to make your own reservations. If you wish the committee to make the reservations for you, let us know and we will be glad to help you.

Other hotels listed on page 8

See you at the convention? The committees will be keeping you informed of the program developments in the next two issues and I am sure that the June issue of the CRYSTAL BALL will be a fat one. We plan to have a committee for news coverage of the convention and show and we will share the highlights with you in that issue. Until next month - - GOOD HUNTING!

CAMBRIDGE CRYSTAL BALL

P. O. Box 416

Cambridge, Ohio 43725

Official Publication of

NATIONAL CAMBRIDGE COLLECTORS, Inc.

President Charles Upton
Vice President. . . . Ruth Forsythe
Secretary Richard Pavlov
Treasurer John Wolfe

CLASSIFIED ADVERTISING RATES

5¢ per word - \$1.00 minimum

We cannot mix type sizes in classified Ads. Abbreviations and initials will count as words. Payment in full must accompany all ads.

DISPLAY ADVERTISING RATES

	Members	Non-Members
1/8 page . . .	\$ 4.00	\$ 6.00
1/4 page . . .	7.00	10.00
1/2 page . . .	12.00	18.00
3/4 page . . .	17.00	25.00
full page . .	22.00	33.00

Advertising copy must be in our hands by the 15th. of the month to assure publication in that month's issue. Advertisements containing reproductions will not knowingly be accepted unless clearly stated.

Cambridge Crystal Ball assumes no responsibility for items advertised and will not be responsible for errors in price description or other information.

WILL THE REAL CAMBRIDGE TURKEY

PLEASE STAND UP !

by Charles Upton

The Cambridge Glass Covered Turkey is almost as elusive as the wild turkeys are today. I have seen seven Cambridge Glass covered Turkeys and not one of them belong to me. I had to borrow one to write this article of comparison. The one I own is a crystal covered turkey, like the one that was featured in a story on the front paper. The paper did not state who the maker of the turkey was, but it was not the Cambridge Glass Company of Cambridge, Ohio. I have these two covered turkeys in front of me now and will attempt to give as detailed a description of both as best I can.

I will refer to the one turkey as the "Copy". The height of the copy is 8 5/8" while the Cambridge is 8 1/8" from the base to the top of the head. The width of the body, on both is 5". The width of the tail 6 7/8" on the copy and 6 3/4" on the Cambridge. The depth, from front to back, including the tail, is 8 3/4" on the copy and 8 1/2" on the Cambridge.

I traced on a piece of paper, a line around the base of the copy and the oval shape measured 4 7/8" by 5 3/4". I sat the Cambridge turkey on this tracing and drew another line around it. The lines were identical. I did the same with the cover of both and they too were identical, measuring 4 3/4" by 6 1/8".

CONTINUED →

MEMBERSHIP INFORMATION

Questions have arisen concerning the beginning and termination dates of the members of the National Club.

Members joining the club after May 1 through and including January will receive all rights and benefits (membership card, newsletters, by-laws and articles of the constitution) plus all back issues of the CRYSTAL BALL for that year.

Members joining in February, March or April will receive all rights and benefits (membership card, newsletters, by-laws and articles of the constitution) plus all issues of the CRYSTAL BALL through May of the following year.

**7th Annual
Antique Show & Sale
CAMBRIDGE, O.**

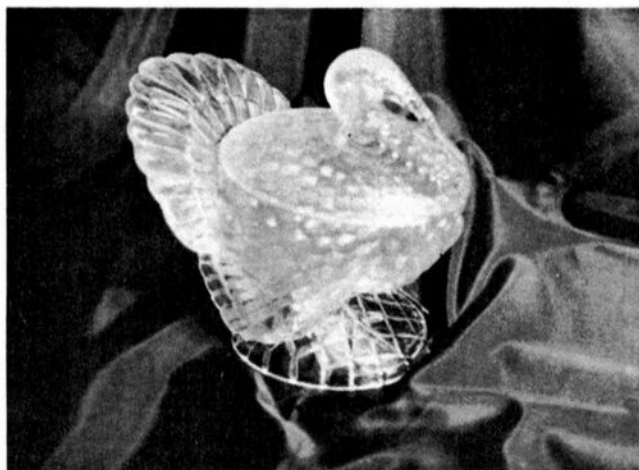
Cambridge Armory
McFARLAND DRIVE (CITY PARK)

APRIL	27	10:00 A.M. 9:30 P.M.
	28	12 NOON 6:00 P.M.

LARGER and BETTER

YOU CAN NOT AFFORD TO MISS THIS GREAT SHOW
selected reliable dealers

"Copy" - Could this be an early Cambridge Glass covered Turkey? Does anyone out there know who really made this one? Some think the Cambridge Glass Co. made it.



It must be remembered, that when an item is hand made, and is a hot elastic type material, such as hot molten glass, no two will be identical in every way. Because of the weight of the glass itself, the shape of the item could sag or become bent or pulled out of shape in taking it from the mold while too hot. If you happen to own a covered turkey produced by the Cambridge Glass Company and these measurements do not match your turkey, it does not mean that yours is not Cambridge. The detail should be the governing factor in determining the maker.

The most easily recognizable difference between the two is the underside of the base and the feather detail. The underside of the copy is like a waffle, with eight rows of squares. The underside of the Cambridge base looks like an unfinished casting and is rough. The grooves on the copy, viewed from the top, look like they have been cut into the glass, but upon examining them, are actually raised, with the center part of the square being very smooth. The second most recognizable difference is the fine feather detail on the copy. The feathers on the Cambridge turkey are smooth and the feathers on the copy have a very fine detail.

There are eighteen feathers on the outside row of feathers on the tail of the copy and only seventeen feathers on the Cambridge Turkey. There are seventeen feathers on the inside row of feathers on the tail of both the copy and the Cambridge turkey.

CAMBRIDGE GLASS COVERED TURKEY



1222 TURKEY

On the backside of the copy, there are five leaves which look like a type of fern leaf, some grass and a limb with cut-off branches. The Cambridge turkey does not have the detail, but does appear to have the same type of decoration in this area.

The tail of the copy is more rounded and has two layers of feathers, one on top of the other. One layer, viewed from the rear and one from the front, while the Cambridge turkey has only one layer of feathers, and is the same front and back. The tail of the copy is more rounded and the Cambridge turkey has a slight point to it.

There is about $\frac{1}{4}$ " difference in the thickness of the base. The copy is $\frac{1}{2}$ " thick at the front of the base while the Cambridge turkey is $\frac{3}{4}$ " thick.

The copy faces straight ahead in proportion with the tail while the Cambridge turkey tends to face to the left in proportion to the tail.

The feet of the copy are $\frac{1}{8}$ " closer to the front edge of the base as compared to the Cambridge Turkey.

The more I compare these two birds, the more I am convinced that the copy is older than the Cambridge turkey and is not actually the copy as I have called it. Could this be an early Cambridge Glass "Covered Turkey"? Does anyone out there know who really made this one? Some think the Cambridge Glass Company made it.

Some have asked if Cambridge Glass Company made a smaller covered turkey. I have never seen a picture in any catalog of such an item and do not believe that a smaller turkey was ever made by the Cambridge Glass Company.

Patterns

by Ruth Forsythe

STRATFORD*

February already, so not much time left until our convention. This will be our first with more to come. Let's make it a memorable one with lots of enthusiastic members attending.

Most of our "patterns" so far in the CRYSTAL BALL have been Near Cut. The reason for this is these are early 1900 patterns and most of us are not as familiar with the early Cambridge patterns as the later ones.

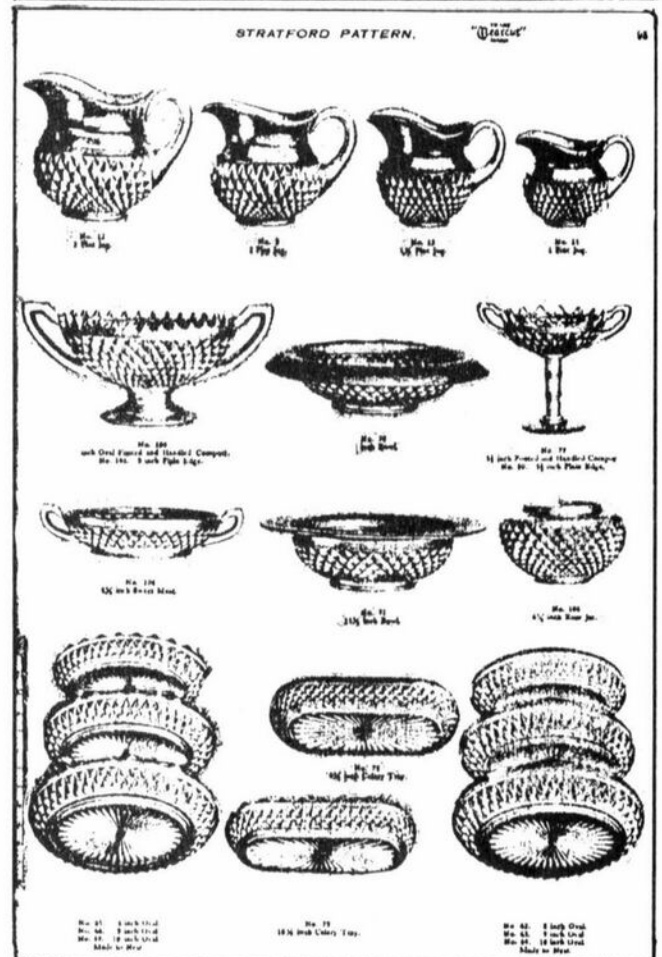
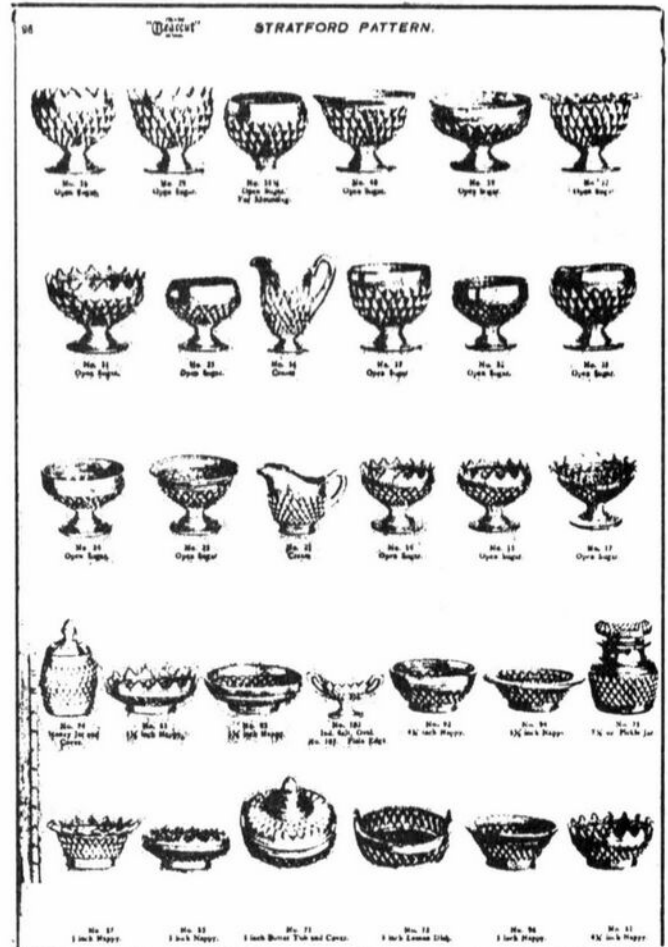
Cambridge Near Cut was exceptionally good as it was awarded the highest premium at the United States of America Universal Exposition in St. Louis (see photo).

STRATFORD

Sorry the accompanying photos aren't clearer, but we have to do the best we can with whatever help we can get in identifying Cambridge Glass.

STRATFORD is a sawtooth pattern which reminds one of Mt. Vernon except the pattern is much larger. The glass in STRATFORD is clear and heavy. The two quart pitcher weights three pounds. The pattern begins at the top with deeply grooved lines. Below the lines, the piece will be covered with graduated sawtooth. On the base of pieces there is a large, deeply grooved star. It comes in both footed and flat pieces; in both plain and marked with the larger triangle and C. Do not know of color, but could be possible, if you have any interesting pieces, please let us hear from you.

*Ref. Mimmie Watson Kamm



MANUFACTURERS
OF
"Near-Cut" Glass



"Near-Cut" Glass was Awarded the Highest Premium at St. Louis


WHY DO WE COLLECT CAMBRIDGE GLASS?

by Harry & Evelyn Allen

It seems such a short time ago and yet it was eight years. I was going to garage sales and Antique Shows with a friend and believe me, I thought she was a real nut buying little bits of antiques and quite a bit of Heisey glass. After a few trips, just to keep her company, I found myself getting interested in Heisey glass. My first purchase was six crystal sherbets to use as dessert dishes. Little by little, I bought a piece I liked. My husband began to talk Cambridge Blue Caprice. He told me if I ever found any to buy them. I wasn't at all familiar with it, but with his description in mind, I started to look. About one month later, at a garage sale, I noticed fifteen pieces of beautiful, pale blue glass and the design seemed so right. I asked the people the price and with it being right, I bought it. My husband was elated that I had found MOONLIGHT BLUE CAPRICE in such a short time. In four years we put together 474 pieces of it. Everyone who comes to our house admires it. I still bought Heisey and started to look for Cambridge. I studied hard every piece I saw, then Welkers came out with their books and Bennett's with their's. I bought them and really began to search. I couldn't believe Cambridge made so many beautiful ornamental pieces. After eight years, I still find pieces I have never seen before. We are both overwhelmed by the beauty of the Art glass Cambridge made. I don't think we'll ever own all we would like to, as money only goes so far and so does shelf space.

After a few years, Cambridge started replacing Heisey pieces in our cabinets. I still think Heisey made a beautiful glass and I really appreciate it, but Cambridge made so many more decorative pieces and this seems to suite our taste. In collecting, I can't always buy something and keep it because it is rare or expensive. I just keep what pleases us. In our shop, we have pieces I sometimes hate to sell, but I try to remember we can't keep it all and always hope it will end up in cabinets of people who will appreciate it as much as we do.

MARKET PLACE

1. CROWN TUSCAN NUDE COMFORT 5 1/2"
Bennet plate 15,r2,n5 \$42.50
2. SAME AS 1 or \$80.00 for pair
3. CROWN TUSCAN CORNUCOPIA 3"
Bennett plate 16,r2,n1 \$10.00
4. EBONY 3oz NUDE COCKTAIL
Bennett plate 44,r2,n7 \$18.00
5. EBONY BOWL 10", GOLD DECORATED,
IRIDESCENT, like Bennett plate 7
row 1, no 1 \$35.00
6. EBON 10" BOWL, SQUARE PATTERN,
FLYING BIRDS, SPONGED ACID Finish
Bennett plate 20,r1,n1 \$25.50
7. EBON 8 1/2" TWIST CANDLESTICKS
SATIN FINISH, like Bennett plate 6
row 1, no 2 pair \$25.00
8. CARMEN VASE 10" Bennett plate 21
r1,n2 \$28.00
9. SAME AS 8 marked with black
sticker \$34.50 pair \$57.50
10. CRYSTAL CANDELABRA Welker RP
page 11,#658 no bobeches or prisms
tiny rams heads on ends \$12.50
11. CRYSTAL ICE BUCKET WITH SILVER
TONGS Marked with  \$12.50
12. CRYSTAL ROOSTER MUDDLERS 5 1/2" (3)
plate 47,r1,n1-Bennett ea \$5.00
13. CRYSTAL GADROON FOOTED MAYONNAISE
BOWL with MINERVA etching, Welker
RP page 43 #3500/58 \$12.50

Satisfaction Guaranteed
Postage and insurance extra
Frances B. Crail
1551 Lamplighter Dr.
Longmont, Colorado
80501

WANTED: Catalogs or information on
Tiffin Glass Co

- 1- EVERGLADE MOONLIGHT BLUE BOWL WITH 2 MATCHIN CANDELSTICKS
WELKER- ,PG 70 AND 71- \$115.00
- 2- NEAR CUT PUNCH BOWL- FEATHER PATTERN WITH 8 CUPS- \$ 80.00
- 3- CROWN TUSCAN(PLAIN) 11 IN, FOOTED VASE -WELKER P-50 \$ 70.00
- 4- CAMB. COBALT BLUE CRYSTAL FOOTED VASE WELKER PG 50 \$ 35.00
- 5- HANDLED AMBER BON BON DISH CLEO ETCHING PG. 87 WELKER \$ 12.50
- 6- AMBER SUGAR AND CREAMER ETCHED #E704 WELKER P-89 \$15.00
- 7- 2 AMBER DESSERT PLATES E704 ETCHING AND MARKED \$ 5.50 EA.
- 8- AMBER CENTER HANDLED CAKE PLATE(SAME AS ABOVE) \$20.00
- 9- ONE AMBER CUP WITH 2 SAUCERS(SAM E AS ABOVE) \$ 7.50
- 10.-CLEAR 15 IN. CENTER BOWL WITH GRAPE ETGHING \$25.00
- 11- CAPRICE- BLUE FOOTED ASH TRAY AND CARD HOLDER
2 3/4 IN. WELKER PG- 26 \$ 5.00

AUDREY DARROW
RT. 2 WINDS#ONG HILLS FARM
NASHPORT, OHIO 43830

614- 787-2838 6 TO 9 P.M.

S.A.S.E. INS. AND POSTAGE EXTRA

* * * * *

FIRST ANNUAL CONVENTION

NATIONAL CAMBRIDGE COLLECTORS, INC.

CAMBRIDGE, OHIO

April 26, 27, 28, 1974

- Events will include:
- Tour of Bennett's Cambridge Glass Museum
 - "Get Acquainted" Continental Breakfast
 - Antique Show and Sale
 - National Convention Banquet - featuring
Guest Speaker Lucile J. Kennedy - Sales
Manager of Imperial Glass Corp.
 - National Breakfast Meeting and election
of Officers for coming year
 - "Show and Tell" panel discussion

A separate letter containing forms and prices will be mailed

* * * * *

- * EL RANCHO MOTEL, (AAA), 1 mile W. of Cambridge on US Rte. 40 & 22 (32 units)
1-614-432-2373
- * FAIRDALE MOTOR LODGE, (AAA), Exit #67 off IR-70, 1/2 mi. E. on Rte. # 22, (20
units) 1-614-432-2304
- * HOLIDAY INN, Exit SR 209 off IR-70, 1-614-432-7313, 1 mi. S. on SR 209
- * KNIGHTS INN, Exit SR 209 off IR-70, 1-614-432-6391
- * RAMADA INN, Exit SR 209 off IR-70, 1-614-432-5691
- * RED CARPET INN, Exit SR 209 off IR-70, 1-614-432-2185
- * SPIRIT OF 76 INNS, Exit SR 209 off IR-70, 1-614-439-3581
- * TRAVELODGE, Exit SR 209 off IR-70, 1-614-432-7375

COLLECTORS CORNER

by Robert Coyle

The Month of February has arrived, and February brings St. Valentines Day and this reminds us of Cupid, and Cupid reminds us of Heart, and that signifies Red, and - guess what Red reminds us off? Carmen!!! Hope you all guessed right.

Speaking of Carmen... I wish every one could have seen the spectacular dinner service for twelve in Cambridge Carmen which was displayed at a Columbus, Ohio Antique Show. Rumor has it that the Cambridge dealer who purchased it never got it to her shop, but merely shifted it from one auto trunk to another.

At the recent show of Antique Collectables in Indianapolis, Indiana, a gorgeous Cambridge Cut Wild Rose punch set in Carmen was on display. We have been told that it quickly found a new home, and is now resting comfortably in the Bennett Museum.

Speaking of the Bennett Museum word has it that an outstanding Royal Blue Cordial Set with Silver Overlay is a recent addition to the already beautiful Museum. This sounds like a must for viewing!

A very prominent Newark, Ohio Heisey Collector recently added to a newly started Cambridge Collection, the very rare pair of Carmen Everglades double branch candleholders. What could be more exciting than these for a beginning?

At a recent National Cambridge Collectors, Inc. Board of Directors meeting, a Columbus, Ohio member showed a Cambridge Decagon plate in the rare Tomato color which was signed C. This is living proof that Cambridge did make the color referred to as Tomato.

A Central Ohio dealer recently attended a Columbus, Ohio Antique Show to pick up a Mandarin Gold "Bashful Charlotte" flower frog and when she reached the booth where it was being held for her...low and behold, a Cambridge Milk Blue Horn of Plenty vase was staring at her in the same booth. May we also add that it was reasonably priced.

Is there any market for Cambridge Flower Frogs? We believe so, as we were just advised that a New Jersey dealer purchased twenty-four of them recently.

Any Cambridge enthusiast attending an Ohio Antique Show in December would have been quick to spot a very large Apple Green Swan fruit bowl. It was a big swan with a big price, but this was no shock as you will have to travel a good many miles of Shows and shops to find another of these.

Now that the deluge of Holiday mail has lessened, and before the increase in postal rates, let us hear from all the readers with their current finds or observations - interesting or not - let us be the judge. We have an abundance of space, so why not help us to fill it !!!

See you next month at Collector's Corner.

NATIONAL CAMBRIDGE



COLLECTORS INC.

Reprinted 4-81