

Cambridge



Crystal Ball

ISSUE NO. 31

NOVEMBER 1975

Published monthly by the NATIONAL CAMBRIDGE COLLECTORS, Inc.
To encourage and to report the discovery of the elegant and boundless product
of the Cambridge Glass Company, Cambridge, Ohio

Thoughts from the President - - - -



The writers of our National Cambridge Collectors Constitution and By-laws succeeded in creating a Gem stone of unusual proportions. This stone was somewhat rough as all newly formed gems are, but indicated potential for terrific brilliance.

The Gem to which we refer is our Objective. The establishment of a museum for the study of that beautiful collectable, Cambridge glass.

In our By-laws, these same writers provided a method for the management of an organization dedicated to the fulfillment of the objective.

This management is provided by a changing Board of Directors. As with any other organization, changes in management or more specifically managers bring about changes in methods of approach used to accomplish stated goals.

Our thoughts at this midway point in our current Club year are focused on some of the methods now being used, the thoughts that prompted them, and some of the gains being realized.

At the beginning of this Club year the financial statement indicated that our most pressing need was to balance the budget and to erase the deficit figures from our statement. As a result, most of the initial planning was directed to this end.

First and foremost was the need to establish a system of bookkeeping that would provide us with correct information as to where the money came

from and where it was going. At this writing we are happy to report accomplishment of this goal.

Achieving balance of the budget was not the easiest of tasks, but it has been accomplished. The deficit figures are still there, but additional efforts have been directed toward this problem. Our entry into the sale of signs is an example of this effort. A Study Group contribution has aided also. We are still hopeful of having the deficit completely erased by the end of the year.

Rumors have been heard around the show circuit that the Cambridge Club is folding. These may have been prompted by the deficit in our statement printed in June, but let us assure you that our financial health has improved. Rising costs in the Postal rates will create some difficulty in the near future but we hope to have an answer for this by the time of our Quarterly Meeting.

The next item in importance was to determine a method for increasing our membership. This goal has been approached from two directions. First thoughts were directed toward better identification and retention of existing membership. This we can also report as being successful. Our rate of renewal has shown an increase. This we hope to improve even more by renewing all memberships within a household at the same time. Some billings will be prorated to accomplish this.

The second phase of membership improvement has been directed toward better National coverage of our Club and of it's activities. Combined, these two efforts have resulted in steady, though not great, growth in our total number.

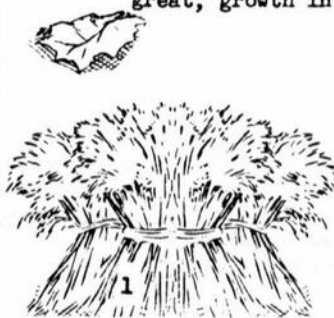
Continued on page 9

MEMBERSHIP RENEWAL NOTICE

If the date on your
Address Label is -- 11-75

This is your last issue of the CRYSTAL BALL! Don't miss a single issue - RENEW YOUR MEMBERSHIP NOW!

FORM ENCLOSED FOR YOUR CONVENIENCE



CAMBRIDGE CRYSTAL BALL

P. O. Box #416
Cambridge, Ohio - 43725

Official Publication of

NATIONAL CAMBRIDGE COLLECTORS, INC.

1975-76 Officers & Committee Chairpersons

PRESIDENT - - - - - William C. Smith
VICE-PRESIDENT - - - - - Charles Upton
SECRETARY - - - - - Janice Hughes
TREASURER - - - - - David G. McFadden

BUDGET & FINANCE - - - - William C. Smith
BY-LAWS - - - - - David G. McFadden
CONVENTION - - - - - Mary Jane Miller
MEMBERSHIP - - - - - Dave Hardesty
MUSEUM - - - - - Ed Ruby
PROGRAM & ENTERTAINMENT - - - Evelyn Allen
PROJECT - - - - - Charles Upton
PUBLICITY - - - - - Frank Wollenhaupt
STUDY GROUP ADVISORY - - David B. Rankin

CRYSTAL BALL Editor - - - Phyllis D. Smith

CLASSIFIED ADVERTISING RATES

5¢ per word \$1.00 minimum

We cannot mix type size in classified advertisements. Abbreviations and initials will count as words. Payment in full must accompany all ads.

DISPLAY ADVERTISING RATES

	Members	Non-Members
1/8 page - - - - -	\$ 4.00 - - -	\$ 6.00
1/4 page - - - - -	7.00 - - -	10.00
1/2 page - - - - -	12.00 - - -	18.00
3/4 page - - - - -	17.00 - - -	25.00
full page - - - - -	22.00 - - -	33.00

DEALER'S DIRECTORY

1" ad - - - - - \$6.00 for 6 months

Advertising copy must be in our hands by the 15th of each month to assure publication in our next issue. Advertisements containing reproductions will not knowingly be accepted unless clearly stated.

CAMBRIDGE CRYSTAL BALL assumes no responsibility for items advertised and will not be responsible for errors in price, description or other information.

Please address all correspondence to:

NATIONAL CAMBRIDGE COLLECTORS, INC.
P. O. Box #416
Cambridge, Ohio - 43725

PLEASE NOTIFY US IMMEDIATELY OF ANY CHANGE IN YOUR ADDRESS!

PLEASE enclose a Self-Addressed Stamped Envelope when requesting information.

TRADEMARKS

BY DAVE RANKIN

This month we will resume our study of the specialty trademarks with a discussion of three labels from the 1930's. Two of these labels were used on the popular etchings, Elaine and Rose Point, introduced in 1933 and 1935, respectively.



figure 1



figure 2

We do not have trademark registrations or trade article on these labels, therefore, our date ranges are somewhat speculative. The main dating factor is the presence of the \triangle which, as noted in our previous discussions, was phased out of the general line label at the end of 1937. It, therefore, seems appropriate to assume that usage of all labels with the \triangle was stopped at the end of 1937 unless there is specific evidence to the contrary. With no such evidence on these labels we will conclude that the maximum date ranges are 1933 - 1937 on the ELAINE label and 1935 - 1937 on the ROSE POINT label.

Our third label this month is TABLE ARCHITECTURE. This label, registration #349,280, was first used March 15, 1937 according to the registration. The items in table architecture are patented and the application for the patent was filed April 23, 1937. This gives us a good starting date of 1937. However, we found only one usage of the label in a January 1, 1940 catalog. From this limited information we have a minimum date range of 1937 - 1940 which will be adjusted as more facts are uncovered.



figure 3



figure 4

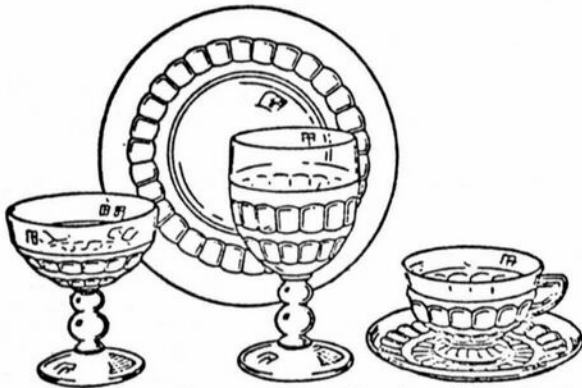
Figure 3 is from the trademark registration and figure 4 comes from the 1940 catalog. At this point we cannot be sure what the actual label looks like but suspect that figure 4 is a very close approximation, if not exact.

Next month more specialty labels.

QUESTIONS & ANSWERS

by Frank Wollenhaupt

Dear Mr. Wollenhaupt: I was wondering if there is a difference in Heirloom, Centennial and Martha Washington pattern? Was the same pattern produced in different colors in different years? Sincerely, D. R., Mo.



Continental, Victorian, Martha Washington or Heirloom - take your pick!

Dear Mr. D. R., The first listing for this pattern is Continental. It was found on the cover of a July 18, 1927 issue of China, Glass and Lamps. The colors that were produced in Continental were: Peach-Blo, Amber-Glo and Emerald. (Remember that Emerald is what everyone commonly calls Apple Green.)

The second occurrence of this pattern was called Victorian. It appeared in the March 1931 issue of China, Glass and Lamps, page 14. The ad states that it was produced in Gold Krystol, Carmen and Crystal.

Martha Washington is the third name for this pattern. It was produced in the greatest range of colors under this name. It can be found in Crystal, Amber, Royal Blue, Forest Green, Ruby, Heatherbloom and Gold Krystol. This information was found in China, Glass and Lamps, June 1932, page 8.

The fourth and final time this pattern was used was after a twenty-one year rest. They called the line Heirloom. The ad selling the Heirloom pattern was found in China, Glass and Decorative Accessories, October 1953, page 4. From this late date I speculate that it was made in Crystal only. To date these are the only pattern names that we have found.

According to Mr. Henn (former Sales Manager of the New York Sales Office) this was a very popular pattern since it was Early American in theme. It was especially popular in Crystal. This may be the reason why Cambridge re-introduced it under several different names through a period of almost thirty years. In one ad a photo of Martha Washington is pictured and they bill it as "a reproduction of Early American Thumbprint".

NOTES FROM YOUR *Editor*

Your October issue of the CRYSTAL BALL was delivered to the Post Office, as Third Class Mail, on September 30th, at 12 A.M. Some of our members received their copy on October 2nd, while others didn't get their's until October 14, and others are still waiting to receive their issue as this goes to press.

All of this is most upsetting, but what was even more distressing, was the reaction I got from the man at the Post Office. He assured me that the service isn't likely to get any better, and will probably get worse.

What can be done? As a start your Budget and Finance Committee has been requested to make a study of what method we should follow for the future. In the mean time, this issue is being mailed to you First Class Mail by order of your Board of Directors.

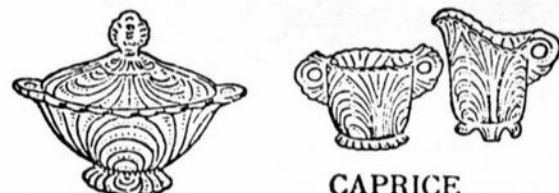
I have some "Good News" and some "Bad News" as the saying goes!! The "Good News" being that Frank Wollenhaupt did get his new column on "Stems" started this month. Do hope you will enjoy it - I feel sure you will learn something new.

Some "Bad News" is the fact that Robert Coyle feels it is impossible for him to continue his column of "Collectors Corner". We are sorry to lose him as a writer for the CRYSTAL BALL. Other "Bad News" is that Lynn Welker has not been able to get his article ready for us this issue -- but we're keeping our fingers crossed for next month!

As you can see, we have added several new advertisers to our Dealers Directory. How about a listing for your Shop?? It doesn't matter where you are located - Cambridge Glass Collectors travel and would like to stop by your shop when in your area.

I did not receive a letter or note from anyone this month. I am blaming it on the slow mail delivery and keeping my hopes up that I will hear from some of you next month.

Our very best wishes to you all for a Happy Thanksgiving and may your wish for a piece of Cambridge Glass come true as you get the lucky side of the Wishbone!



CAPRICE

---- DEADLINE NOTICE ----

Due to the upcoming Holidays, our deadline for receiving advertising and copy must be changed from the 15th to the 10th of November and December. Thank you for your cooperation in this matter!

Museum Now Owns Two Old Catalogues For Member Viewing

Our Museum Chairman, Mr. Ed Ruby now has in his possession two old Cambridge Catalogues for the viewing pleasure of all our members.

The first catalogue was presented to the Museum Committee by the Hokey-Pokey Study Club #1, at our N.C.C. Convention in May. This is a combined 1930-31-32-33-34, Catalogue showing the general line of Cambridge Glass during those years. This is the catalogue that will be reprinted (as soon as the Price Guide is completed) and sold as a money making project for the Museum Fund.

Our second catalogue is a complete 1949 Catalogue, with original price list and also a 1949 Cambridge Arms insert with original price list. Your Board of Directors authorized your Museum Chairman to purchase this catalogue at our 1975 All Cambridge Glass Auction.

Anyone interested in seeing these catalogues may do so at all N.C.C. Meetings or by appointment only with Mr. Ed Ruby. Please write him at P. O. Box 416, Cambridge, Ohio-43725, letting him know when you will be in Cambridge and he will make arrangements with you for your viewing pleasure. But better still --- plan to attend our Quarterly Meetings --- these meetings are planned with YOU in mind!!



The beautiful display sign shown here is in Crystal with Gold encrusted etching. It is in beautiful condition and at present resides at a home in Dayton, Ohio.

It was purchased recently by one of our new Cambridge collecting members out in Odgen, Utah - having traveled originally from someplace in Texas, some ten years ago.

According to Mr. Eugene Henn (former New York Office Sales Manager) these signs were made around 1929 for use in stores carrying Cambridge Glass. He indicated they were also produced in Ebony and in Crystal with satin finish.

Pavlov Resigns Board; Hardesty Named As Replacement

At their October 12th, Board of Directors meeting, your Board accepted the resignation of Richard Pavlov from their ranks, and approved the appointment of David Hardesty to fill the remainder of his term.

Mr. Pavlov has been a member of the Board of Directors since N.C.C. was chartered in May, 1973, being the proud holder of membership card #8. He also served as Secretary for two years.

His business commitments have made it impossible for him to attend Board meetings the past few months and therefore, he felt that the best interests of N.C.C. would be served by his stepping aside at this time. He and his wife Fran own a music store in Cambridge and have now opened a second store in New Philadelphia, Ohio. We wish them the very best in their new venture and hate to lose them as workers - but they assure us they, along with their daughter Anna Marie will continue their membership and interest in N.C.C.

David Hardesty lives in Cambridge, Ohio, and has been serving N.C.C. as Membership Chairman since his appointment in May of this year. He and his wife Judy are avid collectors of Cambridge Glass, specializing in Crown Tuscon.

(Editors Note: We will print an interview with Mr. Hardesty in the near future.)

THANKS!

Our Publicity Chairman, Frank Wollenhaupt, on behalf of the National Cambridge Collectors, Inc., wishes to extend SINCERE THANKS to the following individuals and publications for their help in the promotion of our recent All Cambridge Glass Auction!

Jabe Tarter, Antiques Editor for the Akron-Beacon Journal.

Nora Koch, Editor of the Depression Glass Daze.

Nancy Reiber, Travel Promotion Manager for the State of Ohio.

Fern Angus, Editor of National Depression Glass Journal.

Barbara Sheaffer, Editor of Rainbow Review Glass Journal.

(Interested in what's going on around Ohio? Dial INFO OHIO at this toll free number and find out: 1-800-282-0250)

Stems

by Frank and Vicki Wollenhaupt

This is the first of a series of articles dealing with some of the Cambridge stems. These articles aren't meant to be taken as the last word in stems, but will reflect research through advertising material, old catalogues and any other place information can be gathered. We request that anyone that has some other information not cited in the article to please make us aware of it. We would appreciate a copy of the information you are using as a guide, so that we can put forth as much factual information as obtainable. If you have a favorite stem that you would like researched drop us a note through the CRYSTAL BALL

The stem that we wish to discuss this month was first seen in a patent issued to W. C. McCartney, February 11, 1936. (See Figure #1) On the patented item, the Candlelight etching is shown. The line number for the stem is 3114 and it has been seen in a 1940 catalogue.



Fig. 1.

The big giveaway on the stem is the five rings at the top of the stem. This stem has not been found in any of the national advertising we have found around the 1936 to 1942 time period. Two comports with the #3114 stem can be found in Welkers Reprint #2, page 6.



Fig. 2.

Other items of this Line found in a 1940 catalogue are as follows: 10 oz. Goblet, 7 oz. Tall Sherbet, 7 oz. Low Sherbet, 4½ oz. Claret, 3 oz. Cocktail, 5½ oz. Darguir Cocktail, 2½ oz. Wine, 1 oz. Cordial, 4½ oz. Oyster Cocktail, 12 oz. Ftd. Tumbler, 10 oz. Ftd. Tumbler, 5 oz. Ftd. Tumbler and 3 oz. Ftd. Tumbler.

IS IT CAMBRIDGE ?

by David McFadden

Again this month we share information given to us by Tom Mosser of The Mosser Glass Co., Cambridge, Ohio. Much thanks to Tom for all his help.

One item in production at Mosser Glass is a Near Cut tumbler #2887. (Refer to Welker Reprint #2, page 1, where you can see the pattern on the 32 oz. jug #W54. No tumbler is pictured.) This tumbler is being made in all the Mosser colors. It is an original Cambridge mold.

The Mosser Glass Co. owns a number of other original Cambridge molds, but they are not in production at the present time. These include:

1. Lady Leg Book Ends ---- Cambridge #1141 (Welker Reprint #1, page 32)
2. Georgian Tumblers in the 1½ oz. size, 5 oz. size (Cambridge #317), the 9 oz. and the 12 oz. sizes (Cambridge #319). (Welker Reprint #2, page 37)
3. Ball Decanter Stoppers - #3400 Series in two sizes. (Welker Reprint #2, page 22, on 32 oz. #3400/92 Decanter)
4. Pointed Stopper. (Welker Reprint #2, page 16. Shown on 28 oz. #1388 Decanter)
5. Ball Jug #3400/38, 80 oz. size. (Welker Reprint #1, page 22)
6. Candlesticks. Pristine #493 - 2-3/4 in. (Welker Reprint #2, page 28)

Let's Get Acquainted



In order to better acquaint you with your Board of Directors (those folks who work so hard for this Club) let us introduce you this month to your Treasurer, Mr. David G. McFadden and your Publicity Chairman, Mr. Frank E. Wollenhaupt.

These two men, along with the help of their wives, have given and continue to give of their time, talent and money, to help make this Club the fine organization that it has become.

Dave (or Mac, as his friends call him) joined N.C.C. when it was first organized in May 1973 and he and his wife are holders of membership cards numbered 25 & 26. He was appointed to the Board of Directors in November 1974, to fulfill the unexpired term of Ruth Forsythe, and has never missed a meeting since then. He is now serving as Treasurer and Chairman of the By-Laws Committee, has served as official Photographer for both Conventions and is a member of the Hokey-Pokeys Study Club #1. He is also author of "Is It Cambridge", the column he started in September 1974.

Dave was born January 2, 1941, the son of Mr. and Mrs. Burton McFadden, in Lorain, Ohio. Later they moved to Marion, Ohio, where he graduated from Marion-Harding High School in 1959. He attended Ohio State University, Urbana Junior College and Brooks Institute of Photography in Santa Barbara, California.

In August 1962, he and the former Joy Hess of Columbus, Ohio, were married and now reside at 11441 Overbrook Lane, Galena, Ohio. Their family consists of two West Highland White Terriers named Heather and John and one cat named Thomasina.

Dave is Vice-President of the Keen-Air Conditioning Corp., Columbus, Ohio. His interests being many and varied he belongs to the American Society of Heating & Air Conditioning Engineers, Refrigeration Service Engineers Society and the Ohio Gun Collectors -- being interested in Trap-Shooting. He is also interested in photography, having a complete dark room in his home.

The McFaddens have been collecting Cambridge glass for over three years, getting their start at an Auction when they purchased 29 pieces for \$65, just because Dave's father had been raised in Cambridge! After they got it home and looked it over, they decided they better find out what they had, so they started their never ending study! Today they have a lovely collection made even more outstanding by their large number of Statuesque Line (nude stems) in most every color. They also concentrate on collecting figural pieces such as animals, book ends, flower frogs, etc.

Frank joined N.C.C. when it was first organized and he and his wife are holders of membership cards numbered 34 and 35. Before N.C.C. was formed, Frank had already helped to form a small study group, now known as the Hokey-Pokeys.

Since he was elected to the Board of Directors in May 1974 he has contributed greatly, in that he has been present at every Board of Directors meeting and has never missed a Quarterly Meeting since the inception of the Club. He has served for two years as sergeant at arms for the Board of Directors and he is now serving his second year as Publicity Chairman. In June 1974 he wrote his first "Collectors Corner" column. Since then he has written many items for the CRYSTAL BALL, including the "Questions & Answers" column and a brand new column starting this month, dealing with "Stems".

Frank was born April 12, 1946, the son of Mr. & Mrs. Edward M. Wollenhaupt, Tipp City, Ohio. Living there all his young life, he graduated from Tipp City High School in 1964. In January 1966, he joined the U.S. Navy for four years, spending much of that time in Iceland.

He and the former Vicki K. Loftus of Kettering, Ohio, were married in August, 1969. They now reside at 633 Bowen St., Dayton, Ohio, with their family consisting of three cats named Sugar, Spice and Chico, and their new little puppy named Christy Linn's Mr. MacNichol - better known as "Mac".

Frank is employed as Salesman for the Awisco Corp., Dayton, Ohio. Other than Cambridge glass, he is interested in photography and stamp collecting. He is a member of the Valley Arts & Crafts Club, Tipp City, Ohio and has won ribbons for his specimen Chrysothemums. He also serves as Scout Master for Boy Scout Troop #103, Springfield, Ohio. A troop for mentally retarded boys.

Their interest in Cambridge glass goes back to 1971 when they purchased a large tray in Moonlight Blue Caprice at a Flea Market, because they felt it would go well with their China. Since that time their collection has grown by many hundreds of pieces, to be one of the most varied and outstanding collections you could view anywhere. His special interest at this time is in figural flower frogs, of which he needs the turtle, Geisha, and Buddha, to complete his collection of every known figural.

Continued on page 8

TOUCH OF HISTORY

Jack and Sue Rettig

Shown this month are individual items for the desk, bureau and bathroom cabinet. The sani-shaving service is shown with & without shaving items. Every item has a specific position in keeping with Cambridge's practical and innovative designs. The decoration on the desk set and bookends typify Cambridge's effective use of gold decorations of that era.

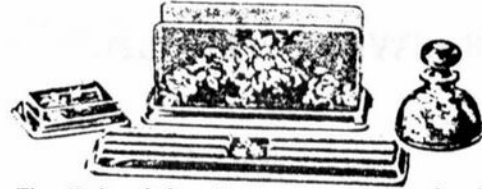
All ads are taken from China, Glass & Lamp publications.

THE CAMBRIDGE GLASS CO.

CAMBRIDGE, OHIO, U. S. A.

March 14, 1927

A DESK SET IN GLASS



The all-glass desk set is a most attractive number. It includes ridged holder for pens and pencils, a paper rack, ink bottle and stopper and pin holder. Can be had in Amber-Glo, Peach-Blo and Emerald, both plain and decorated.

THE CAMBRIDGE GLASS CO.

CAMBRIDGE, OHIO, U. S. A.

August 9, 1926

PUT PEP INTO YOUR SALES



Compact No. 630 is one of many items in the CAMBRIDGE line which are pepping up sales in glassware. The compact shown, made in the popular Cambridge transparent colored glass, is an unusual item and sells on sight. It is the "something" new which every shop and department needs.

Write our Cambridge, O., office or any of our agents at once for prices and descriptive matter.

THE CAMBRIDGE GLASS CO.

CAMBRIDGE, OHIO, U. S. A.

April 25, 1927

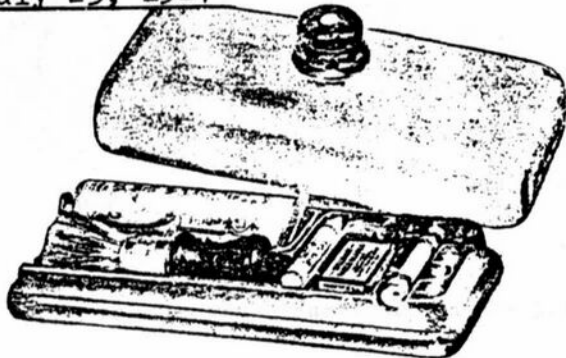


An attractive and substantial pair of book ends in CAMBRIDGE colors of Amber-Glo, Peach-Blo and Emerald. They can be had with encrusted and gold decorations as well as plain.

THE CAMBRIDGE GLASS CO.

CAMBRIDGE, OHIO, U. S. A.

July 25, 1927



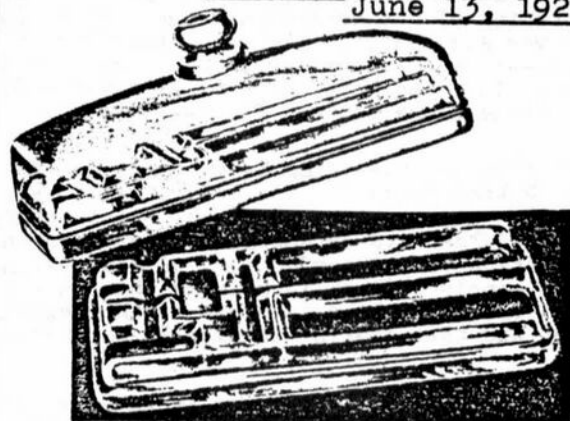
SANI-SHAVING SERVICE

Something entirely new and original is the Sani-Shaving Service, entirely of glass in two pieces. The bottom portion is for safety razor, blades, cream, brush and stypic pencil. Ideal for the bathroom cabinet. In Cambridge colors of Amber-Glo, Peach-Blo and Emerald.

THE CAMBRIDGE GLASS CO.

CAMBRIDGE, OHIO, U. S. A.

June 13, 1927



Sani-Shaving Service

Something entirely new and original is the Sani-Shaving Service, entirely of glass in two pieces. The bottom portion is for safety razor, blades, cream, brush and stypic pencil. Ideal for the bathroom cabinet. In Cambridge colors of Amber-Glo, Peach-Blo and Emerald.

Pioneering In Quality Glassware At Cambridge

by J. M. Hammer

(Part 5)

A MODERN GLASSWARE PLANT

Perhaps we can understand this change better by a trip through the factory as it is today. From the three furnaces come a great variety of wares. There are thousands of moulds for both pressed and blown wares. Colored glassware as well as crystal is being fabricated in the large and airy furnace room. Here, a "shop" or unit is making tumblers in crackled effect in Peach-Blo glass. This is a pink shade - Cambridge was one of the pioneers in the pink shades - but it is but a reddish mass as the gatherer swings his iron blowpipe in delivering the glass from the pot within the furnace to the blower. A brief, strong puff on the "pipe" (as it is technically called) and the piece is formed. While it is still hot it is thrust into a tub of water and the outer surface of the glass is broken in the design known as crackled. Thence a boy carries it to another worker where the piece is reheated and the edges finished before it is taken to one of the eight new annealing lehrs.

Early in 1926, The Cambridge Glass Co. decided to replace its 14 old lehrs with those of the modern, continuous type. One lehr was installed. Its operation appeared to warrant further installations and the Simplex Engineering Co. of Washington, Pa., added seven more to the one it erected first. The factory did not shut down while the new lehrs were being erected and the old ones removed. Operations were continued. There were handicaps, it is true, but cooperation of the workers and the lehr builders was successful. Today, therefore, the glassware from Cambridge is annealed or tempered in the best type of lehr which The Cambridge Glass Co. was able to procure.

Annealing or tempering is an important factor. Unless glass is annealed, it will shatter at the first heavy touch. Its beauty and usefulness is dependent in part upon the perfection or imperfection of annealing which consists first in raising the temperature of the glass to close to the melting point and then cooling it slowly and steadily.

From the lehrs the glassware first comes under inspection. Those which pass the stringent tests and the careful eyes of the experienced women and girls are wrapped. If there is no further work to be done, the ware goes to the packing department and into barrels and thence to the shipping department.

Most of the glassware for table, home and decorative use from the Cambridge factory, however, must go through a finishing process. The bottoms of plates and bowls and other flat pieces must be ground and polished, the sharp edges of stemware and other articles must be treated and finished properly. Before and after each process there must be an inspection by workers trained to catch flaws.

If the ware is to be decorated, there are more processes to go through. Ware for the decorating department, such as a large console bowl, is selected carefully from stock. If the decoration is a gold encrustation, as is much of the decorated ware from the Cambridge factory, it first must have the design printed on it. The design literally is printed on the glass by means of transfer paper on which the design first was printed in ink. The paper is washed off after the ink is rubbed in thoroughly by hand.

(Continued Next Month----Reprinted with permission of China, Glass and Tableware.)

SYRUPS



174



172



170

ACQUAINTED Continued from page 6

Frank and Vicki have traveled over 100,000 miles in the last three years in their quest for Cambridge glass. Frank says that since he was born "disadvantaged" (not being from Cambridge, Ohio) he must try harder! And no one can deny that he does just that!!

President - Continued from page 1

With the Crystal Ball being the largest item in our budget, we felt that it should also produce more of our income. A campaign to increase our advertising has shown some results and indicates better things to come. This is an area where you readers could also help.

Each of the thoughts expressed so far have dealt with the operating side of the ledger. They have said nothing regarding the objective of our Club. A museum.

The income from our Auctions have been directed to the objective and is proving very beneficial. However, if this were to be our only means of raising the necessary capital we would be many many years in reaching our goal. Thoughts aimed at reducing this time element have taken several avenues. Each approach would be an activity or a product that would give members maximum value for their time, money, or effort.

These will include the reprinting of the 1930-34 Cambridge catalogue, the sponsorship of some regional type glass shows, possibly some traveling clinics of Cambridge glass, and some very interesting Quarterly Meetings.

In all, there are many facets to be polished on our Gem. If we can continue to identify the ones that will provide the most brilliance and polish those first, we will soon succeed in creating our showpiece; one in which we can all take pride.

This will not happen over night, but any of the roughness that we can remove now and any facets that we succeed in polishing will contribute to the "Year of Progress".

**WEDDING GIFT OF CAMBRIDGE GLASS
FOR THE NEWLYWEDS CLARK GABLES**

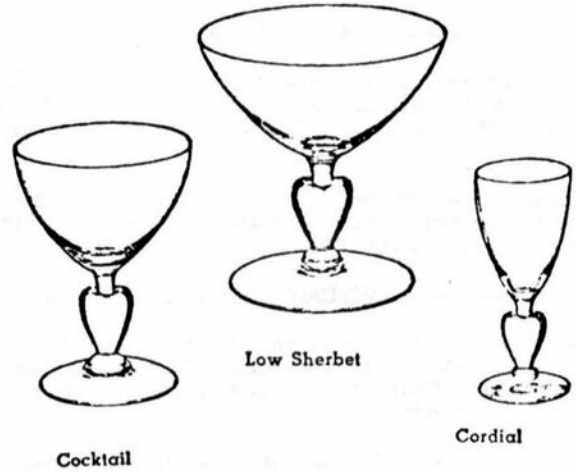
Even in a plant such as that of the Cambridge Glass Company at Cambridge, Ohio, where high quality hand made glassware is made, another day's work is just another day's work to most employees. But recently some of them got a special thrill out of some of the ware they turned out.

It was an order for a Royal Blue and Crystal Luncheon Set to be given to Carole Lombard and Clark Gable as a wedding gift. The noted Hollywood pair were married March 29 at Kingman, Ariz. The gift was from a friend in Fort Wayne, Ind., home town of Miss Lombard, whose pre-Hollywood name was Jane Peters.

China, Glass and Lamps
April, 1939

**3795 LINE
STEMWARE**

Sweetheart



S	E	C	T	Z	R	L	O	A	C	I	B	G	O	D	L	L	U	B	H
A	K	K	N	E	B	U	F	F	A	L	O	P	U	M	V	H	E	J	S
N	A	X	C	B	H	X	A	O	M	R	I	N	A	E	O	W	I	P	I
O	N	A	N	O	T	O	S	T	B	V	C	R	R	R	C	N	O	W	F
E	S	Z	I	A	C	E	W	Q	R	B	L	N	S	I	P	V	K	E	W
G	Z	R	H	G	S	A	H	L	I	O	N	E	J	O	E	T	A	E	C
I	B	E	P	A	C	O	E	N	D	C	O	M	R	D	Z	G	I	T	Y
P	E	A	L	G	O	L	E	P	G	O	T	T	E	R	H	K	S	E	A
R	L	X	O	F	T	O	S	O	E	C	A	N	A	R	I	Y	A	N	E
E	J	S	D	O	T	N	M	Q	B	U	E	L	R	D	A	U	G	A	H
T	H	F	E	L	Y	P	I	C	A	N	T	L	D	O	T	H	Q	W	S
U	I	T	R	I	D	S	E	D	N	R	I	V	T	I	N	G	M	S	W
O	C	R	A	O	O	A	X	Y	I	S	O	M	E	R	O	N	E	E	L
P	S	E	W	I	G	L	L	H	M	A	V	E	T	O	U	T	A	K	E
O	V	E	R	L	F	R	O	M	A	M	Y	L	F	R	E	T	T	U	B
Y	A	J	E	U	L	B	Y	O	L	U	C	A	N	S	E	E	T	H	A
T	I	B	O	T	C	H	E	D	S	T	H	I	S	P	A	P	E	R	X

Here is a puzzle for all you fans of Cambridge Glass. Hidden in the puzzle are the names of twenty Cambridge Animals. You can find them by spelling their names backwards, forwards, upside down, etc. Get your thinking caps on and enjoy yourself. The puzzle was constructed by Vicki Wollenhaupt for the enjoyment of the Cambridge Squares and the Hokey-Pokeys Study Groups.

(The solution will be in next months CRYSTAL BALL!)

Club News

----- HOKEY - POKEYS -----

The Hokey-Pokeys Study Club #1, will hold their next meeting on October 19th, in the home of Don and Jo Ann Herman in Granville, Ohio.

A pot-luck dinner is planned and discussion will center around future plans for their study club activities.

----- CAMBRIDGE SQUARES -----

The Cambridge Squares Study Club #2, met October 5th, in the home of Reba Embree in Cambridge, Ohio, with nine members and three guests present.

The topic of discussion was the Statuesque "3011" Line. In the display were numerous pieces, including two seven inch comports with a carmen and a royal blue top; a frosted nude with crystal foot and carmen Ivy Ball top; a crystal nude goblet with pistachio crackle bowl; two nine inch crystal nude candlesticks with royal blue tops and a crystal nude bud vase #3011/26.

Brought by the members for "Show and Tell" were several unusual pieces that included the #1542, 20 oz. Life Saver decanter, a Blue Willow etched cocktail; a light emerald 8" plate with the Imperial Hunt Scene etched in gold; an Aurora stem 12oz. Goblet with D/990 Hunt Scene and a crown tuscon vase with Chintz pattern and the acid stamped Crown Tuscon mark.

Lovely refreshments were served. The next meeting will be November 14, in the home of Dave and Judy Hardesty.

YOU HAVE A DATE -- DON'T MISS IT N.C.C. QUARTERLY MEETING

WHEN: Sunday, November 23, 1975

TIME: 1:30 P.M.

WHERE: Pavlov Music Center, Inc.
623 Wheeling Avenue
Cambridge, Ohio

PROGRAM: Our Program and Entertainment Chairman Evelyn Allen, does not have the program firm at this writing --- but promises it will be both interesting and educational.

Bring your questions and new finds for "Show and Tell".

SEE YOU THERE!

BOARD OF DIRECTORS RECOMMEND BY-LAWS CHANGES

The following By-Laws changes have been recommended by the By-Laws Committee and endorsed by your Board of Directors. They will be presented for your vote at the Quarterly meeting on November 23, 1975.

Proposal

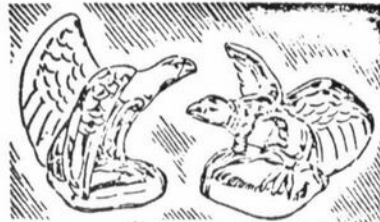
Whereas, It is desired to avoid reference to a specific date for the annual meeting in Article VII, to avoid disruption of the annual meeting by election of officers, and to ease the transition of officers;

Now, therefore, be it Resolved, That Article VII, Section 1 (b) and (c), and Section 2 (a) (b) and (d), be amended to read as follows:

ARTICLE VII -- ELECTION OF DIRECTORS

Section 1 "(b) At the regular meeting six months prior to the annual meeting, the President shall appoint a Nominating Committee of at least three members, the chairman shall be the immediate past president, then an active member of the organization. (c) The Nominating Committee shall prepare a report giving the number of directors to be elected and one or more members for each vacancy, at the regular meeting three months prior to the annual meeting, at which time additional nominations will be entertained from the floor."

Section 2 "(a) At least 30 days prior to the annual meeting, a ballot containing all nominees for Board vacancies, will be mailed to the entire voting membership. This ballot must be returned to the National Cambridge Collectors, Inc. no later than 7 days prior to the annual meeting. (b) The results of this ballot shall be announced at a membership function prior to the annual meeting, at which time the Board of Directors will meet to elect officers for the ensuing term. (d) The nominees receiving the largest number of votes so cast shall be declared elected for the term of office beginning 30 days following the annual meeting."



Shown above are Eagle Bookends, suitable for table or mantel

Classified

WANTED: Cambridge deep etched "Marjorie" pattern in crystal. Send list and price. WALT BRAMMER, 1015 So. Paxton St., Sioux City, Iowa - 51106.

DISPLAY SIGNS FOR SALE

Made of Acrylic - Exact size as the original glass ones



Made to your order in crystal or any Cambridge color (except Jade). Lettering in your choice of Gold, Black or White.

PRICE
Crystal (ea.)--\$8.00
Color (ea.)---- 9.00

Add 50¢ each for
Postage and
Handling.

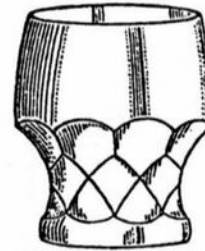
Ohio residents add 4½% Sales Tax
Allow 2 to 3 weeks for delivery

Dealer Prices Available Upon Request

NCC SIGNS **P.O. BOX 416**
CAMBRIDGE, OHIO 43725

WANTED

CAMBRIDGE



GEORGIAN TUMBLER

Needed in all sizes
and colors!

Especially need 9oz. size
in CRYSTAL - etched or plain!

FRANK E. WOLLENHAUPT

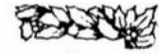
633 Bowen Street

Dayton, Ohio - 45410

PHONE - 1-513-254-2937



Solve your Christmas Shopping Problems Now



The perfect gift for the person with everything -- who loves Quality Glass

Make your Christmas shopping easy this year!! Give a membership in National Cambridge Collectors, Inc. ---- A gift your friends can enjoy all year long!!

SPECIAL CHRISTMAS ORDER

Make checks payable to NATIONAL CAMBRIDGE COLLECTOR'S, INC. and mail to: P.O. Box 416, Cambridge, Ohio--43725

Friends Name _____
\$10 Membership _____

Additional Family Members
\$3 each Membership _____

Address _____

City _____ State _____ Zip _____

Your Name and Address _____

Greeting Card to read: _____

Total Amount Enclosed _____



Fill in the Application Blank and we'll take care of sending a Greeting Card, along with their Membership Cards timed to arrive for Christmas! Their first CRYSTAL BALL will be the January, 1976 issue.

(INCLUDE AS MANY ADDITIONAL NAMES AS YOU WISH)

DEALERS



DIRECTORY

<p>ANTIQUE ALLEY 24815 Broadway Bedford, Ohio - 44146 216-232-7739 Marie Spagnola CAMBRIDGE GLASS---ROYAL DOULTON</p>	<p>BLACK ROOSTER ANTIQUES 1018 Clark Street Cambridge, Ohio--43725 614-439-2549 ----- M. Sipe CAMBRIDGE GLASS - GENERAL LINE</p>	<p>COLLECTOR'S HAVEN 135 Cynthia Street Heath, Ohio -- 43055 614-522-1635 SPECIALIZING IN CAMBRIDGE GLASS</p>
<p>GREAT EXPECTATIONS! 441 Mt. Vernon Road Newark, Ohio - 43055 Robert Coyle ----- 614-349-7362 ANTIQUES AND DECORATIONS</p>	<p>HAROLD AND JUDY'S ANTIQUE SHOP 437 North 8th Street Cambridge, Ohio -- 43725 614-432-3045-Open by Appointment SPECIALIZING IN CAMBRIDGE GLASS!</p>	<p>HERITAGE ANTIQUES Rt. #5, Cambridge, Ohio - 43725 614-439-3241 TAKE N.8th ST.RD.(County Rd.#33) TURN LEFT AT RAILROAD TRACK.</p>
<p>HOBBY HOUSE ANTIQUES Rt. #1, Cambridge, Ohio - 43725 614-432-6971 - Frank & Lena TAKE RT.#209 W.FROM CAMBRIDGE TO RT.#658 - NORTH 1½ MILES.</p>	<p>MARGARET LANE ANTIQUES 2 E. Main Street New Concord, Ohio--43726 Lynn Welker ----- 614-826-4418 CAMBRIDGE GLASS MATCHING SERVICE</p>	<p>WAYSIDE ANTIQUES 2290 East Pike Zanesville, Ohio - 43701 614-453-4776 Maxine Ferguson CAMBRIDGE GLASS - OPEN BY CHANCE</p>
<p>YOU CAN ADVERTISE YOUR ANTIQUE SHOP HERE 1 inch - \$6.00 for 6 months</p>		

NATIONAL CAMBRIDGE COLLECTORS, Inc.
P. O. Box 416
Cambridge, Ohio - 43725

Address Correction Requested

FIRST CLASS MAIL