

Cambridge



Crystal Ball

ISSUE NO. 35

MARCH 1976

Published monthly by the NATIONAL CAMBRIDGE COLLECTORS, Inc.
To encourage and to report the discovery of the elegant and boundless product
of the Cambridge Glass Company, Cambridge, Ohio

Thoughts from the President - - - -

After the terrific Quarterly Meeting this past weekend, it is difficult to establish which thoughts to mention and in which order.

When we say that this meeting was terrific, we mean just that. Our attendance was the best ever for a Quarterly Meeting, the business session was active, and the program was "super".

Among the early items of business was the By-law changes that had been proposed by your Board in January. The membership vote on this change was "for" acceptance. We will now hold our Annual Meetings in June instead of May. We are certainly hopeful that this will allow more of you to enjoy this weekend event with us.

With the By-law change issue resolved, it then became possible to announce the dates for the 1976 Convention. It will be held the weekend of June 25, 26, & 27. We will pass along additional information just as rapidly as the plans are confirmed.

Another item of major impact was the announcement of an Antique Show & Sale that will be sponsored by the Club, to be held the same weekend as the Convention. The Committee organizing this event is headed by Evelyn Allen.

The Show location is to be the Guernsey County Catholic High School, just south of Cambridge on SR 209. It will be held in the gymnasium which is well lighted and air conditioned. There is plenty of parking, and the committee indicates that we will have the benefit of a very good concession provided by a group of ladies from the church. All of this, coupled with the thought of approximately forty dealers concentrating on Cambridge glass and good quality antiques, leads one to believe that this will be "the event" to attend.

There was some lively discussion at the meeting regarding the possibilities of getting started with our Museum. Several thoughts of potential locations were presented and discussed. These suggestions were referred to the Museum Committee for additional study. It was very refreshing to hear thoughts of this subject from the group.

The Program for this meeting was outstanding. The committee certainly deserves our congratulations for a "job well done". Their subject was Figurals. If it was produced by Cambridge there must have been an example of it in the display. The two narrators, Jack Rettig and Lynn Welker, had done their homework and gave the group a very complete story of the figurals. The display for this program was literally breath-taking.

In all, this was a very good Quarterly Meeting, altho' somewhat disappointing that each of you could not have been there to participate.

If this meeting was any indication as to what the Show and the Convention are to be, they will make Cambridge history.

So far, we have seen very few of the membership applications coming back in. Our thanks to those of you that have found your new member, and our encouragement to those of you who are still looking. We need all of the new members that we can get.

It is events such as this past Quarterly Meeting and those planned for the near future that is really making this the "Year of Progress".

MEMBERSHIP RENEWAL NOTICE

If the date on your
Address Label is --

3-76

This is your last issue of the CRYSTAL
BALL! Don't miss a single issue - RE-
NEW YOUR MEMBERSHIP NOW!

FORM ENCLOSED FOR YOUR CONVENIENCE

Bice

CAMBRIDGE CRYSTAL BALL

P. O. Box #416
Cambridge, Ohio - 43725

Official Publication of

NATIONAL CAMBRIDGE COLLECTORS, INC.

1975-76 Officers & Committee Chairpersons

PRESIDENT - - - - - William C. Smith
VICE-PRESIDENT - - - - - Charles Upton
SECRETARY - - - - - Janice Hughes
TREASURER - - - - - David G. McFadden

BUDGET & FINANCE - - - - William C. Smith
BY-LAWS - - - - - David G. McFadden
CONVENTION - - - - - Mary Jane Miller
MEMBERSHIP - - - - - Dave Hardesty
MUSEUM - - - - - Ed Ruby
PROGRAM & ENTERTAINMENT - - - - Evelyn Allen
PROJECT - - - - - Charles Upton
PUBLICITY - - - - - Frank Wollenhaupt
STUDY GROUP ADVISORY - - - - David B. Rankin

CRYSTAL BALL Editor - - - - Phyllis D. Smith

CLASSIFIED ADVERTISING RATES

5¢ per word \$1.00 minimum

We cannot mix type size in classified advertisements. Abbreviations and initials will count as words. Payment in full must accompany all ads.

DISPLAY ADVERTISING RATES

	Members	Non-Members
1/8 page - - - - -	\$ 4.00 - - -	\$ 6.00
1/4 page - - - - -	7.00 - - -	10.00
1/2 page - - - - -	12.00 - - -	18.00
3/4 page - - - - -	17.00 - - -	25.00
full page - - - - -	22.00 - - -	33.00

DEALER'S DIRECTORY

1" ad - - - - - \$6.00 for 6 months

Advertising copy must be in our hands by the 15th of each month to assure publication in our next issue. Advertisements containing reproductions will not knowingly be accepted unless clearly stated.

CAMBRIDGE CRYSTAL BALL assumes no responsibility for items advertised and will not be responsible for errors in price, description or other information.

Back issues of the CRYSTAL BALL are available to members only at a cost of 60¢ each or 12 issues for \$7.00.

Please address all correspondence to:

NATIONAL CAMBRIDGE COLLECTORS, INC.
P. O. Box #416
Cambridge, Ohio - 43725

PLEASE NOTIFY US IMMEDIATELY OF ANY CHANGE IN YOUR ADDRESS!

PLEASE enclose a Self-Addressed Stamped Envelope when requesting information.

TRADEMARKS

BY DAVE RANKIN

This month we will continue our discussion of specialty trademarks with two more labels from the 1930's.



The first trademark is a paper label which was applied to items with YE OLDE IVY etching. The IVY etching was done on stemware and serving pieces, mainly in the Tally-Ho line. It was advertised in China, Glass and Lamps in June, 1935 with Maddock and Millers' dinner service with IVY decoration. The IVY etching appears to have been of fairly limited production, therefore, we have very little information to aid in establishing usage dates for our label. In addition to the advertising the presence of the  is our only other dating aid. As we established in earlier articles, usage of the  was discontinued at the end of 1937. We speculated that this would also apply to other labels. This yields a date range of 1935-1937.




figure 1

YE OLDE IVY label, figure 1, is approximately 1/2" by 1 1/8" with a green background. Our thanks go to Doris Issacs of Cambridge, Ohio for making the label available for this article.

Our next label is unique in our discussion. It is not a mark in the glass, nor a paper label, nor an acid stamp, nor a display sign. It is applied white enamel as is the Japonica decoration with which it is associated.



figure 2

Again we have very little information for establishing usage dates. Japonica has been attributed to 1937 only. We have no new information to add at this point. We should, however, note again that a usage date of 1937 is consistent with dating information previously discussed on trademarks with the .

Next time still more specialty trademarks.

Club News

NATIONAL CAMBRIDGE COLLECTORS, INC.
Quarterly Meeting - February 15, 1976
Columbia Gas of Ohio, Inc., Cambridge, Ohio

The meeting was called to order at 1:50 P.M. by President Smith with 11 Board members and 33 Club members present. The minutes of the November 23, 1976 meeting were read by Janice Hughes and approved.

The Treasurers report was given by David McFadden, showing the Club has a balance of \$549.88 and the Museum Fund \$2,762.17.

OLD BUSINESS

Bob Coyle Chairman of the Nominating Committee, reported he had met with his committee, Larry Hughes, Ruby Landman and Joy McFadden, on January 18, in the home of Evelyn Allen, Heath, Ohio. Nominated were Doris Isaacs, Cambridge, Ohio, Ruby Landman, Ashland, Ohio, Dave McFadden, Galena, Ohio and Jack Rettig, Gahanna, Ohio. The Board members whose terms end in 1976 are, Bob Coyle, David McFadden and Ed Ruby.

A motion was made by Dave Rankin to close the nominations. Motion did not carry.

Nominated from the floor by Lynn Welker was Bob Coyle, Newark, Ohio.

A motion was made by Dave Rankin to close nominations again. Motion carried.

President Smith reported the Ballots would be prepared and mailed to the membership.

The proposed By-Laws change that was printed in the February, 1976 CRYSTAL BALL, page 2, regarding the change in the Annual Meeting date, was read by Janice Hughes. The membership voted by standing. Motion carried.

President Smith reported the Price Guide committees had completed the price guides for the 1930-34 catalogues. It is hoped the Catalogue Reprint with Price Guide will be published by the Annual Meeting in June, 1976.

COMMITTEE REPORTS

BUDGET AND FINANCE: President Smith reported the Club finances are improving, with the reduction in the cost of printing the CRYSTAL BALL the most contributing factor.

BY-LAWS: No report.

CONVENTION: President Smith reported he will be the Chairman for the Convention which will be June 25, 26, 27, 1976.

MEMBERSHIP: Chairman Dave Hardesty reported to date we have 276 \$10 members, 103 \$3 members and 10 are delinquent.

Continued on page 10

IS IT CAMBRIDGE ?

by David McFadden

Let's have a brief review of the items covered thus far in our series of articles on reproductions and re-issues. These items include Nude Stem 3 oz. cocktails, Nude Stem flared comport, Rosepoint etched #3121 stemware and serving pieces, Mt. Vernon decanter and wine glasses, Everglade bowl and candleholders, Cambridge Arms, Swans in several sizes, Seagull and Draped Lady flower holders, Caprice, Cambridge Square, Calls Lily candleholders, Pencil dogs, NearCut Strawberry items, 8oz. dog and cat bottles, round and square cheese preservers, frog and squirrel novelties, etc.



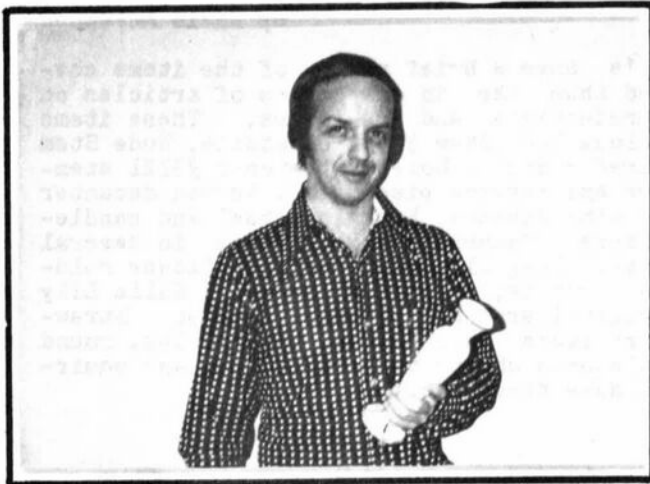
This series of articles began with the Sept. 1974 issue of the CRYSTAL BALL and if you have missed any of these articles, you can obtain them by ordering back issues of the CRYSTAL BALL. Check the inside front page for information on how to obtain these back issues. It takes a lot of time and many miles to gather the information for this article and it seems to be time to do some more research.

One item which seems to be appearing with some frequency lately (especially at Flea Markets) is a glass butter mold with the wooden handle and the cow print. One which appears to be similar appears in Welker Reprint #2, page 108. It was reported to me that this item is being produced in Mexico at this time. I have no further information about the butter mold at this time.

A bird novelty item is a recent addition to the production line at Mosser Glass Co. It appears to be quite similar to the #3 Cambridge bird shown here, however there are a few distinguishing differences. The Cambridge bird appears to carry its tail higher in the air and usually has a ground base. It has been seen in crystal (both plain and satin finish) and emerald (light) green, to date. The Mosser bird has been seen in a wide range of transparent colors (both plain and satin finish) and they are signed - usually in two places. They have an M immediately in the center of the plunger base and another M (in the mold) on the underside of a wing.



Let's Get Acquainted



This month we'd like to introduce you to the newest member of your Board of Directors - Charles David Hardesty. Dave is pictured here with his most recent find, a Crown Tuscan vase, decorated with black enamel and signed on the bottom with the black acid stamp. It is truly a lovely piece.

David was born August 5, 1942, in Ravenna, Ohio, one of six children of Charles D. and Linnie E. Hardesty. Dave remembers fondly his childhood and the time he spent with his grandparents. His Grandfather was a Methodist Minister and Dave remembers moving to many places and attending many schools.

In June, 1960, he graduated from Cambridge High School. He was working two jobs by this time, so there had been little time for extra curricular activities. He did, however, manage to work in some basketball and belonged to the school Chest Club. His son Bryan seems to be following in his footsteps as he won the local Chest Tournament, for his Class, in 1974.

David and the former Judy Kay Hayes were married in August, 1961. Judy is a Cambridge girl who grew up almost next door to the old Cambridge Factory. They are the parents of three fine boys, Bryan 13, Dennis 10 and Robert 7. They make their home on R. D. #5, Hillview Addition, Cambridge, Ohio.

Dave is employed by the Champion Spark Plug Company as a Material Handler and he is also a Real Estate Salesman for the Bonnell Realty Company. His wife Judy is employed as a Nurse's Aide at Guernsey Memorial Hospital.

Besides collecting Cambridge Glass, Dave and Judy love to travel and play cards. Dave also has a great interest in working with children. He is Manager of a Little League baseball team and he has worked with the Indian Guides and the Boy Scouts of America. He and his family are very active members of the First Methodist Church of Cambridge. He also belongs to the local, state and national Realty Associations.

The Hardestys started collecting Cambridge Glass about six years ago and have really concentrated their efforts the past two years. For the most part they collect a piece because of its color. Judy collects Crown Tuscan and Dave collects Carmen, Milk Glass and Royal Blue. He could not have picked better colors for this Bicentennial year. They also have service for eight in Rosepoint and we mustn't forget all of their swans, figure flower holders and animals.

Not to be left out of this Family affair, their sons each have their own collections of Georgian tumblers. Bryan has 14 different colors in the 9 oz. size, Dennis has 8 different in the 2½ oz. size (including a crystal w/grape etching) and Robbie has just started to collect the 5 oz. size. So far he has one in Heatherbloom, Amber and almost one in Emerald Green (shhhh - don't tell him - the green one is coming for his birthday).

Dave and Judy joined National Cambridge Collectors in January, 1975 and are the holders of Membership Cards numbered 374 and 375. They are charter members of the Cambridge Squares Study Club. Dave was appointed Membership Chairman in June, 1975 and in October, 1975 he was appointed to the Board of Directors to complete the unexpired term of Richard Pavlov. He has worked on the 1975 Auction and is now a member of the committee for the First Annual N.C.C. Antique Show to be held in June of this year.

Dave is a hard worker, dedicated to the ideals of N.C.C. We are indeed fortunate to have him as a part of the team that makes up your Board of Directors.

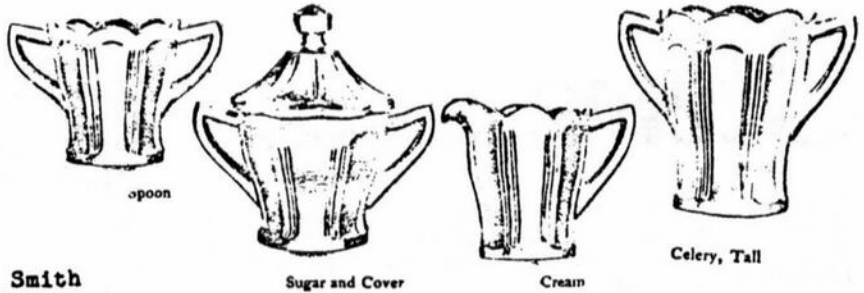


75 & 50 Years Ago with The Cambridge Glass Co.

January, 1906 -- Our "Marjorie" DESIGN NEAR-CUT for season 1905 has not yet been equaled in design, brilliancy and finish and remains unequalled as a seller and profit-maker. BUT ---- we shall present an entirely new design for 1906 which is of a novel style of cutting, and which must create a field of its own. It is ORIGINAL, has CHARACTER, and STYLE, and is a success from the start. Compare it with any other and you will buy it. (copied from "China, Glass and Lamps")

March 29, 1926 - GEISHA GIRL FLOWER HOLDER!! A magnificent specimen of the glassworker's art --- this unusual flower holder brings to the flower bowl a touch of the true oriental beauty. Used on the console, the dining table and as part of the indoor garden in sun porch and living room. Many uses mean many sales, and sales mean profits. Made in Emerald, Amber-Glo, Peach-Blo and Crystal: 12 inches high, No. 523. (copied from "China, Glass and Lamps")

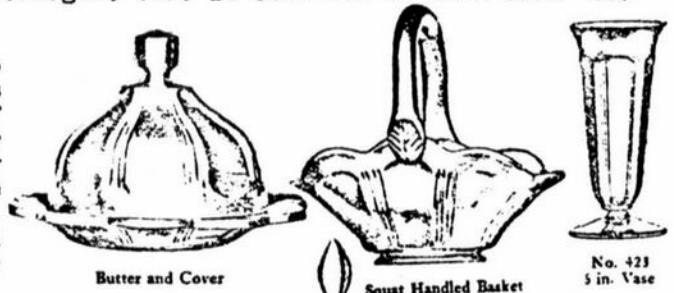
NEARCUT Patterns



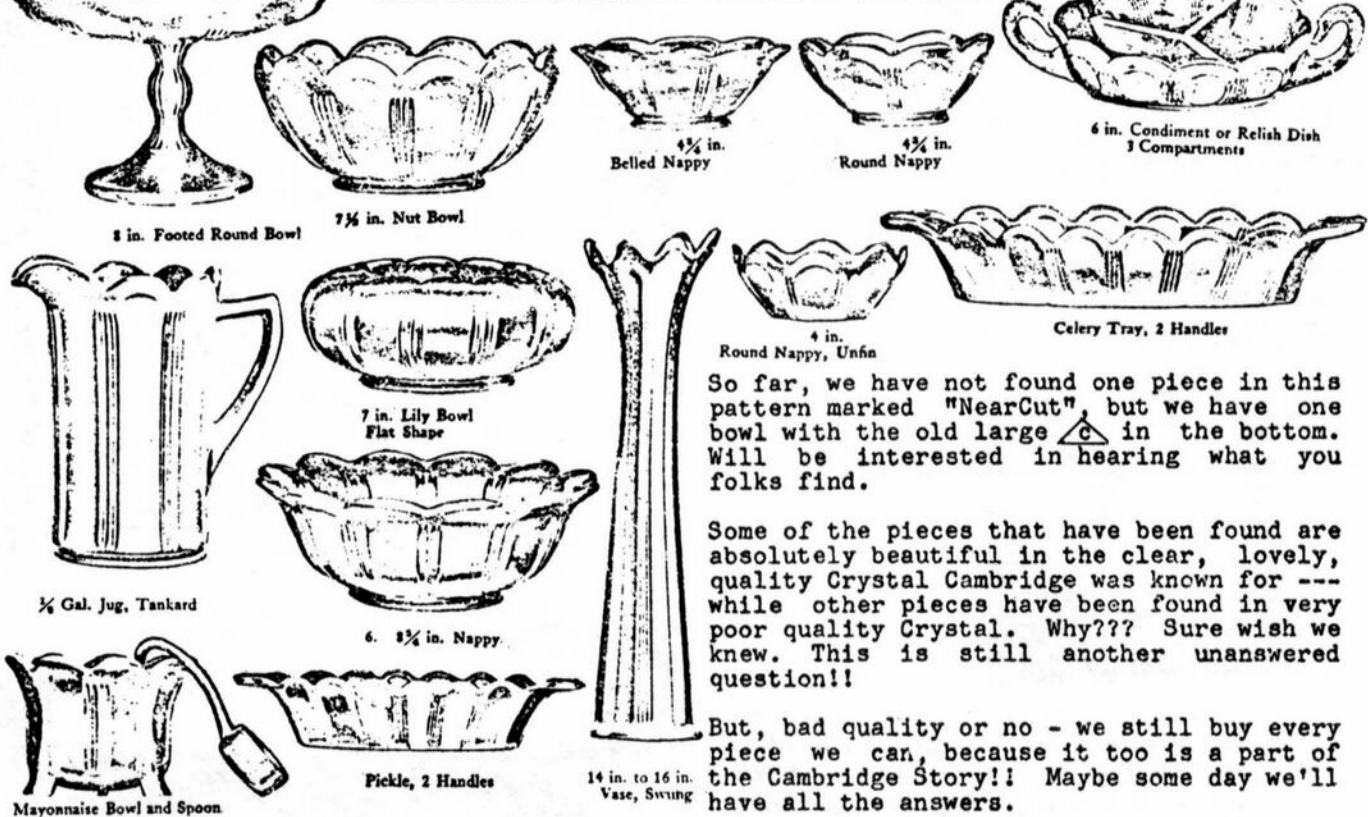
by Phyllis Smith

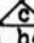
The saying goes that "one picture is worth a thousand words" -- so herewith are a few thousand words for you NearCut enthusiasts. Our pattern this month is very simply described as the "No. 2960 Pattern". It has been nicknamed by many of us the "Four-Line Pattern". It is shown in an old NearCut Catalogue, that is believed to have come out sometime in the 1910-1916 time period.

Unless you have been fortunate enough to find a piece of this pattern marked -- this is probably a brand new pattern for most of you. This pattern was displayed at our NearCut Clinic held during our Quarterly Meeting in February, 1975 and again in the display room during our 1975 Convention. But, for those of you who could not attend these functions, we do hope this will be new information.



NO. 2960 DESIGN.-MEDIUM PRESSED



So far, we have not found one piece in this pattern marked "NearCut", but we have one bowl with the old large  in the bottom. Will be interested in hearing what you folks find.

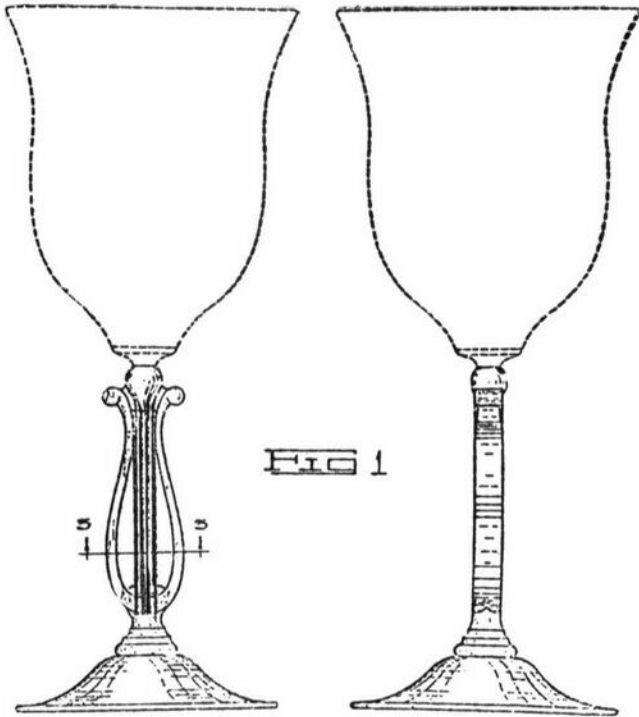
Some of the pieces that have been found are absolutely beautiful in the clear, lovely, quality Crystal Cambridge was known for --- while other pieces have been found in very poor quality Crystal. Why??? Sure wish we knew. This is still another unanswered question!!

But, bad quality or no - we still buy every piece we can, because it too is a part of the Cambridge Story!! Maybe some day we'll have all the answers.

Stems

By Frank and Vicki Wollenhaupt

This month finds us looking at another brain child of Mr. Arthur J. Bennett. The Stradivari Stem was patented by Mr. Bennett on December 7, 1935, patent number 98,490. (see Figure #1)



This stem must have gone through several changes from the time it was patented, until we find it first advertised in a March, 1937 copy of China, Glass and Lamps. (see Figure #2)



FIG 2

The Stradivari stem shape showing the Celestial engraving from the Cambridge Glass Co. is illustrated below. This is brand new. A fine range of new engravings are now being shown on this shape.

The first catalogue we have that can be used as a reference for this Stem, is one dated August 1, 1940. The following items are shown with this stem: 5 oz., 10 oz. and 12 oz. ftd. tumbler, 10 oz. goblet, 3½ oz. cocktail, 3 oz. wine, 4½ oz. oyster cocktail, 7 oz. low sherbet and 5½" low & tall comports.

In the June, 1949 catalogue we find the name has been changed to Regency. At the present time we do not know when the name was changed or what prompted the change. The 1949 catalogue lists two new items: a 4½ oz. claret and a 1 oz. cordial. It also deletes the 5½" low and tall comports that were listed in the 1940 catalogue.

The 1958 Cambridge Glass Company price list gives us the same items in the Regency stem as shown in the 1949 catalogue. From this information we can speculate that the Stradivari or Regency stem was being made, or at least was available, until the last days of the company's existence.

This stem is truly one of the most graceful stems that Cambridge produced.

"The Trauma Of Pre-Parenthood"
or
"Why Did There Have To Be A Cambridge Glass Company??"

With the upcoming birth of our second child, in May, it seems only natural that my husband, Steve, and I should begin deciding upon a name.

Being greatly influenced by the Cambridge Glass Club, in our everyday lives, we certainly owed a debt of gratitude to Mr. Bennett for the names he chose for the glassware. Needless to say, we are faced with many name choices from colors, patterns, or etchings. Surely we tossed around ideas such as Heather(bloom), or Amber, or even after some etchings such as Elaine, Portia, or Diane, but how can I explain to my Cambridge-addicted, Steve, that a child can't be expected to travel the long road through life called Crown Tuscan Horner?

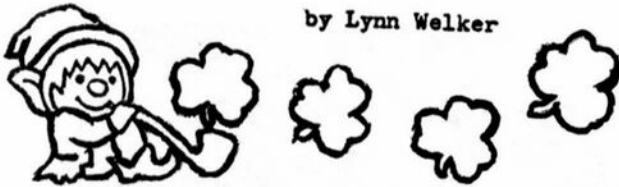
Well perhaps he'll see the (moon)light and be satisfied with ---- Cleo?? ---- or Forest!??

Susan M. Horner
Streetsboro, Ohio

2-5-76

Cambridge RAINBOW

by Lynn Welker



The winter weather has turned into bright sunny weather, so this month I'm offering a color that is prettiest in the sunlight --- RUBINA.

Rubina is by far one of the most popular colors with Cambridge collectors and it ranks high on the ladder of rarity. This may be explained by the fact that it was not a good seller for Cambridge - which somewhat limited its production. It is well known that several retail firms returned their shipments of Rubina because it was unsaleable at the time.

Rubina was first produced by the company in 1924 and introduced to the trade in early 1925. The coloration of Rubina varies greatly. At the time of its production, first quality pieces were intended to shade from red to green to blue to green. Some pieces may be lacking the blue entirely while others may have additional blue on the edges due to the reheating process. Some pieces may also lack the green and simply shade from red to amber. The pieces with the blue and green coloration are the most desirable. Production of Rubina was curtailed before 1930.

Rubina comes in several optic patterns, the majority of which are block optic, honeycomb optic and wide optic. A few pieces have been seen in the narrow optic.

The block optic pieces known are several sizes of vases, tumblers and a handled, covered pitcher (see Figure 1) which is considered very rare. The honeycomb optic pieces known are a variety of different bowls and compotes in many shapes and sizes as well as two types of covered candy compotes. The wide optic pieces known are bowls, compotes, baskets, vases (including the sweetpea vase from which the basket was made) and a Lemonade pitcher and mugs, which are quite rare. The narrow optic pieces known are all stemware pieces such as goblets, sherbets and wines --- all of which are very hard to find. Two sizes of candlesticks with no pattern were also produced.



The only patterned pieces known at this time are the Ram's Head bowl, Doric candlesticks, Dolphin candlesticks with the Mt. Vernon or Stratford base and a very rare bowl in the Stratford pattern. Georgian tumblers in the 9 oz. size are known, but it is not clear if they were part of the Rubina production of this period. These Georgian tumblers do have beautiful Rubina coloring.

There are a variety of decorations to be found on Rubina. However, these decorations are very unusual and considered extremely hard to find. Decorations that I have seen on Rubina are platinum or gold edged borders; etched and gold encrusted borders and a sponged acid exterior decoration which was just recently found. Several of the bowls and compotes were available with mold-scalloped edges.

The majority of the Rubina bowls, compotes, and mugs are signed. However, due to the intense heating and reheating required for Rubina, the signature is sometimes obliterated. The candlesticks, stemware and vases are not signed.

Rubina was the Cambridge factory name for this beautiful color. However, the workers called it Christmas glass and Watermelon glass. It has also been called Cambridge Amberina, but Rubina is the proper factory term for this color. If you have Rubina in your collection, you are indeed lucky. It is not only a popular color but a tempting and expensive one.



MARKO and PUPPY



I don't understand why Mom got so excited
----- do you Puppy????

Flower Holders

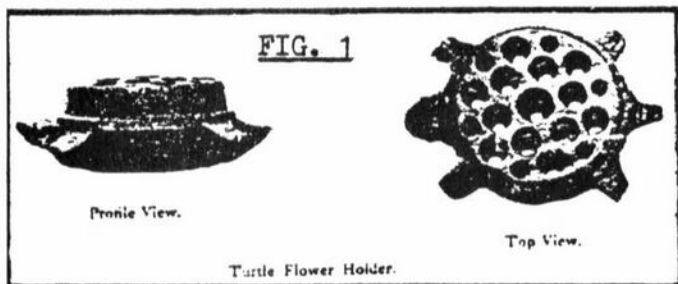
by Bill Smith

This month we present another of the lesser known types of flower holders. This one was named for us in the Cambridge catalogs. A very appropriate name, "turtle".

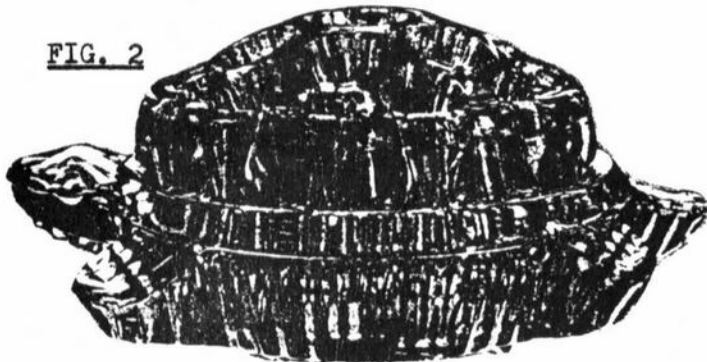
The first appearance that we have found of this holder was in one of the "Nearcut" catalogs on a page showing Ebony glass. The same page listed numerous items in the Community pattern.

From advertising we have an article which is dated January 1922 and indicates that Ebony is one of the new colors being presented that year. We would surmise from this that 1922 could mark the beginning of this item. This would make it one of the oldest types of holder that was produced by the company.

As with many of the other Cambridge items, there were changes in the item as time passed. We can depict at least two varieties at this time. The earlier of these two varieties as shown in Fig. 1 is nearly flat on the top.



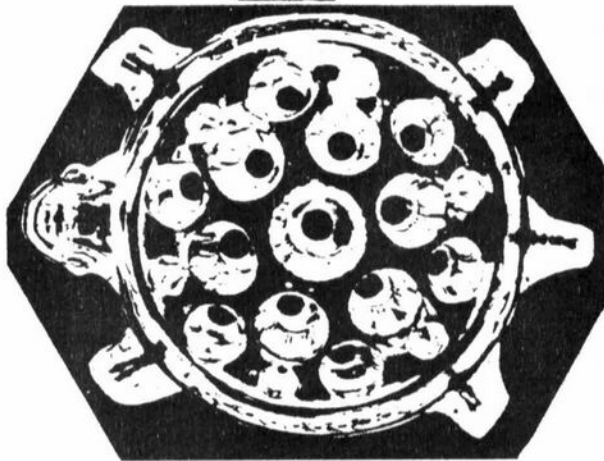
We can find no reference to this item during the early 1930's. It did, however, reappear in the 1940's. In the catalogs of this era it was listed as Item 70 and was described as a 3½ in. Turtle Flower Block. This later version, retaining most of the characteristics of the early model, more of a dome type top. See Fig. 2.



At present we are aware of only five holders of this type. Two of these are Ebony, two are Crown Tuscan, and one is Crystal. None of the five are known to be of the early type.

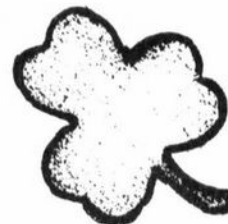
Both types of the block have a total of nineteen holes. The outside holes being alternately large and small. All of the large holes penetrate the bottom of the blocks while the small holes on at least the late blocks are blind. Fig. 3 shows the arrangement of these holes.

FIG. 3



We are hoping that even though our design detail is very limited you will be able to recognize one of these blocks when you see it at the Show or a Flea Market. They are a very nice addition for any collection.

Collect Cambridge



ETCHED BLOSSOM TIME



ETCHED WILDFLOWER,
3121—Goblet

notes from your EDITOR!

WOW!! What a terrific Quarterly Meeting we had this past February 1st. If you weren't there, we're sorry - you really missed a good one!

We had a good turn out, with a lot of new faces. The minutes say there were 44 in attendance, but some of you forgot to sign the registration form as there were considerably more present.

The pictures did not turn out well enough to use -- so we can't show you what the Display tables looked like. We're sorry about this, but hope to get these problems worked out soon.

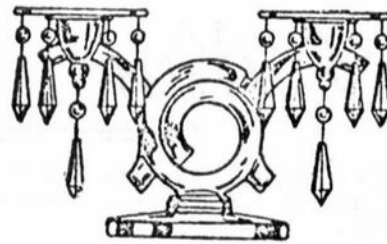
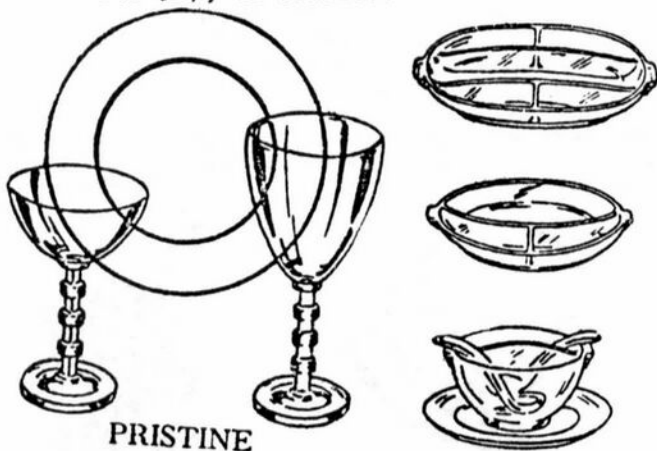
President Bill has outlined the highlights of the meeting and program in his message to you, so I won't go into it here. I do, however, want to tell you about the Ritz Blue Bunny Box (with fur detail), that took my eye! It was truly lovely. Did you know these boxes came both ways -- with and without fur detail? Well, I didn't - but I do now! There's always something to be learned at our Quarterly Meeting.

Hope all of you are making big plans to attend the Convention and Antique Show this year. There are a lot of nice people working very hard, to make sure you'll have a good time! So please try to make it - we're all planning to meet you there!

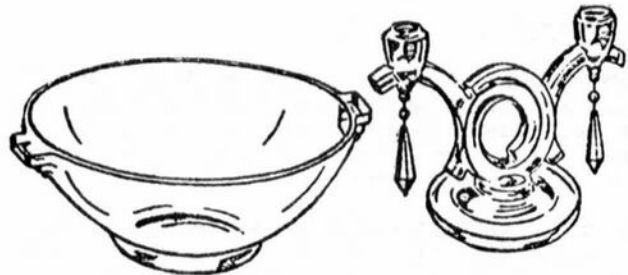
It is hoped that the lack of mail means that our new printing method meets with your approval. We have had only one note to the contrary. Please let us hear from you!

A BIG THANKS to those of you who are sending in your membership dues early. This is a tremendous help! Any of you with 4-76 on your address label can send your renewal dues in now and save us a lot of work on sending renewal notices. Thanks again.

Till I visit with you again next month - may the "Luck of the Irish" be with you and may you find an Emerald Green Nude stem wine --- for 50¢, of course!!



PRISTINE



QUESTIONS & ANSWERS

by Frank Wollenhaupt

? Dear Frank: Can you tell me if this goblet is Cambridge? (see sketch #1) Is it the Georgian pattern? J.T., Alabama

ANSWER: This piece although beautiful, is not Cambridge. It is from the Georgian tableware line No. 1611 of the Fenton Art Glass Co. It dates somewhere in the 1930's. It was made in a wide variety of colors: crystal, green, pink, amber, ruby, royal blue (they used this color name also), topaz and black.



SKETCH #1

Several different pieces were made in this line: 2½, 5 and 10 oz. Tumblers, Goblets, 12 oz. Ice Teas, Decanters, ½ gal. Jugs, 6" and 8" Salad Plates and Sherbets. Ref: Colored Glassware of the Depression Era 2 by Hazel Marie Weatherman (page 103).

? Dear Frank: Did Cambridge make a figure flower holder of a young girl holding a stringed instrument? It looks to be a Mandolin. D.R., Missouri

ANSWER: Yes, Cambridge did make such a figure flower holder. (Ref: Bennett's Color Book, Plate #41, row 1, #1.) Among Cambridge collectors this flower frog is simply called the Mandolin Lady. I will not go into further detail at this time, as Bill Smith is planning a "Flower Holders" article about her in the very near future.

NEXT MONTH: How to measure swans!

Club News

Continued from Page 3



STUDY Club News

CRYSTAL BALL: Editor Phyllis Smith reported she had mailed 261 February issues of the CRYSTAL BALL.

PROJECT: No report.

PUBLICITY: No report.

STUDY GROUP: Chairman Dave Rankin reported there are still two active Study Groups. He advised there is interest in forming Study Groups in Cleveland and Dayton, Ohio and also on the West Coast.

MUSEUM: President Smith presented the plunger used for the Second Issue Commemorative plate, to Chairman Ed Ruby for the Museum. This plunger was donated to the Club by Charles Upton.

PROGRAM: Chairman Evelyn Allen thanked Jack Rettig and Lynn Welker for their interesting and informative programs at the membership meetings.

AUCTION: Chairman Lynn Welker reported the Auction will be held on August 22, 1976. He will announce his committee members in the March CRYSTAL BALL.

SPECIAL COMMITTEE: Chairman Steve Horner reported the Burton Flea Market had been cancelled, but he is still looking for other locations.

NEW BUSINESS

Chairman Evelyn Allen reported the Antique Show will be held on June 25, 26, 27, 1976 at the Guernsey Catholic Central High School, Rt. 209S, Cambridge, Ohio. Her committee is Bob Coyle, Dave Hardesty, Janice Hughes and Lynn Welker.

President Smith reported he had received a letter from Hazel Marie Weatherman requesting we price the Cambridge Glass section of her book "Colored Glassware of the Depression Era 2" for her new 1976 Price Guide. She will recognize the Club in the Forward for their assistance.

Charles Upton requested the covered Urn that has been donated to the Museum be authenticated before it is accepted.

Donald Herman requested information on when plans are going to be started for the museum. Ed Ruby was advised to seek information in the Cambridge area.

Jack Rettig and Lynn Welker gave a very informative discussion on Figurals.

A motion was made by Dave Rankin to adjourn at 4:10 P.M.

Janice Hughes
Secretary

P.S. A 50¢ fine was paid by Lynn Welker.

----- HOKEY - POKEYS -----

The Hokey-Pokeys Study Club held their January meeting on February 1st, in the home of Bill and Phyllis Smith, Springfield, Ohio. There were eight members present.

The entire meeting was devoted to discussion of our part in the program for the Convention. There was no "Bring and Brag" session.

Next meeting will be held February 28th, in the home of Frank and Vicki Wollenhaupt.

----- CAMBRIDGE SQUARES -----

The regular meeting of the Cambridge Squares was held on January 23, 1976, at the home of Marybelle Moorehead, Cambridge, Ohio. There were twelve members and two guests present.

Two couples dropped out of the Study Club and we welcomed Everett & Shirley Patterson of Cambridge as new members.

The topic of discussion was Cordials, with Lynn Welker as the guest speaker. He showed twenty different styles including Nude Stem, Heatherbloom Optic, Tahoe, Rock Crystal and Carmen with silver overlay.

"Show and Tell" items consisted of Blue and White Cloud goblets and sherbets, 5oz. Georgian tumbler in Heatherbloom, Childs Toy Set in Emerald Green, Fernland Pattern and a Forest Green champagne with frosted Nude stem and crystal foot.

The pricing teams were reminded to have the price guide completed by February 15 and there was discussion about the program the Cambridge Squares will have during the Convention.

A delicious dinner was served by our hostess assisted by her daughter. Judy Hardesty won the door prize which was a 10 oz. Ball tumbler in the Starburst pattern.

The next meeting will be held on February 20 in the home of Larry and Janice Hughes with the topic being Swans.



--- SUPPORT OUR ADVERTISERS ---

TOUCH OF HISTORY



Jack and Sue Rettig

Unusual dinnerware pieces are featured in this month's collection of front cover ads from the China, Glass & Lamps publications. Also shown is a tumbler shaped vase and a console ensemble that features the "rose-lady" figure flower holder.

THE CAMBRIDGE GLASS CO.

CAMBRIDGE, OHIO, U. S. A.

Nov. 21, 1927



Here is a console set ensemble of artistic merit. Can be had in Emerald, Peach-Blo or Amber-Glo transparent colored glass. Can be supplied plain, engraved, etched or with gold encrustation. With or without the 512 figure flower center. The engraving shown is No. 138.

THE CAMBRIDGE GLASS CO.

CAMBRIDGE, OHIO, U. S. A.

June 6, 1927



With the season for flowers at hand, your display should include this attractive tumbler shape vase. It is No. 798 and can be had in Peach-Blo, Amber-Glo and Emerald.

THE CAMBRIDGE GLASS CO.

CAMBRIDGE, OHIO, U. S. A.

March 7, 1927

QUALITY DINNERWARE



A complete glass table service is available in CAMBRIDGE colors of Amber-Glo, Peach-Blo and Emerald. The shape is unique and every needed piece is included.

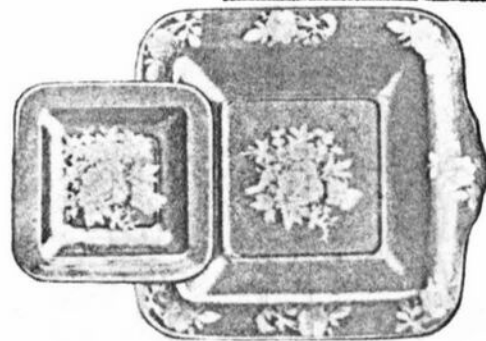
Can be had in plain colors, in etchings or in gold band and gold spray decorations.

CAMBRIDGE quality dinner ware means sales through popular demand.

THE CAMBRIDGE GLASS CO.

CAMBRIDGE, OHIO, U. S. A.

April 18, 1927



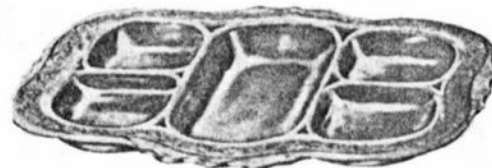
Square dishes for brick ice cream and other confections. The larger plate for cake or serving. In Amber-Glo, Peach-Blo, Emerald, plain, decorated.

THE CAMBRIDGE GLASS CO.

CAMBRIDGE, OHIO, U. S. A.

April 4, 1927

COMPARTMENT RELISH DISH



Here is a real change from the usual round relish dishes. It is a CAMBRIDGE quality product. The shape is superlative and the piece is made complete in one piece of glass. A gold encrusted band around the broken edge makes an artistic item. It comes in Amber-Glo, Emerald and Peach-Blo.

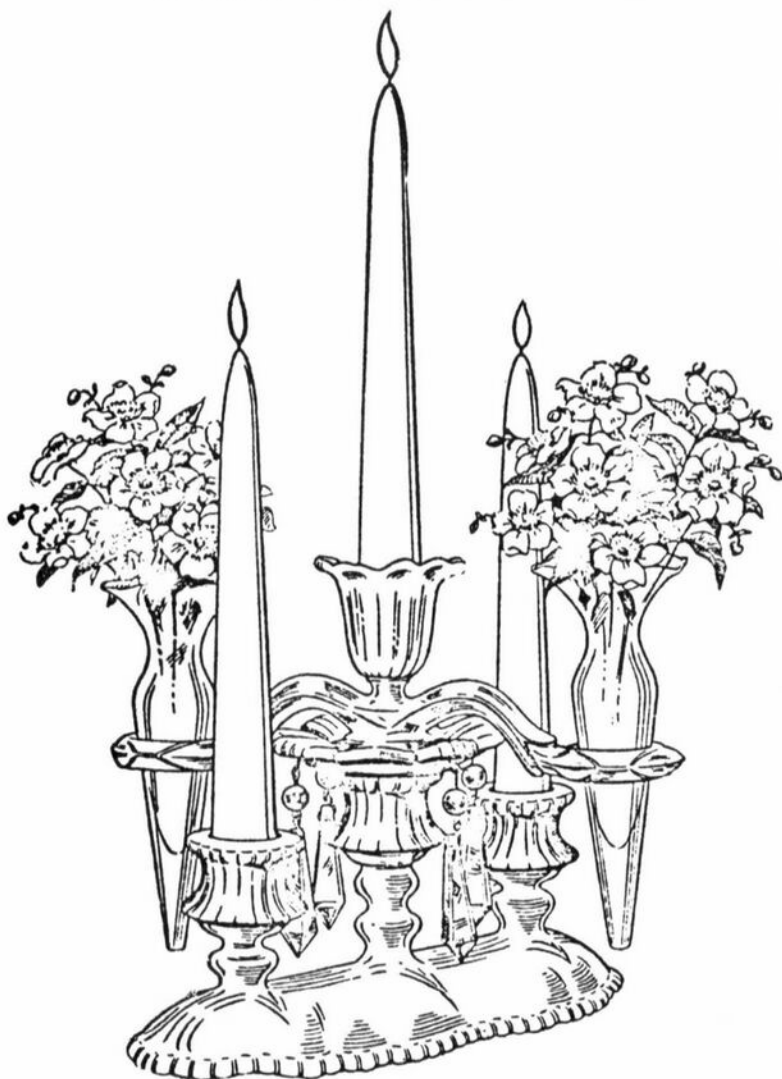


Classified WANTED

CAMBRIDGE, Royal Blue in Farber Bros. holders. Please write to: Alex M. Walsch, 2236 So. Layton Blvd., Milwaukee, Wisconsin 53215.

CAMBRIDGE, Rock Crystal, Croesus pattern #722, 10 oz., ftd., tumbler #3500. Mrs. E. W. Yockey, 234 S. Fountain, Wichita, Kansas 67218.

CAMBRIDGE, Elaine etching on tall Stems, clear Crystal (ridges lengthwise in bowl). Need wines, liquors, sherbets. Mail photo or drawing to: Clara M. DeGross, 3916 Fairway Dr., Canfield, Ohio 44406.



EPERGNE

CHARLES A. UPTON
R. D. #5
Cambridge, Ohio - 43725

--- FOR SALE ---

#3011 Crystal Stem (Nude) Wines 3 oz.

Royal Blue bowl (5) ea. -----	\$ 60.00
Carmen bowl -----	55.00
Amethyst bowl -----	45.00
Mandarin Gold bowl -----	45.00
Amber bowl -----	45.00

#3011 Ebony Stem (Nude) Wine 3 oz.

Crystal foot and bowl -----	40.00
-----------------------------	-------

Georgian Tumblers 9 oz.

Carmen -----	13.00
Mandarin Gold -----	5.00
Forest (dark) Green -----	10.00

POSTAGE & INSURANCE EXTRA!

BACK ISSUES
of the -----



Cambridge Crystal Ball

COPIES OF ALL ISSUES IN STOCK

(Available to members only)

Single Copies - - - - \$.60
12 Issue Lots - - - - \$7.00

ORDER FROM

National Cambridge Collectors, Inc.
P. O. Box 416
Cambridge, Ohio - 43725

COLLECTORS HAVEN

135 Cynthia Street ----- Heath, Ohio -- 43055

Evelyn M. Allen --- 614-522-1635

SPECIALIZING IN CAMBRIDGE GLASS!

REFERENCE FOR THE FOLLOWING: WELKER REPRINT #1

# 1--6" Ram's Head candlestick, Royal Blue, pg. 5, #3500/31 -----	\$ 45.00
2--8" Dolphin candlestick, Milk Glass, pg. 6, #50 -----	40.00
3--8½" Swan, Crown Tuscan w/gold trim, pg. 15, #1043 -----	160.00
4--8½" Swan, Light Green, pg. 15, #1043 -----	68.00
5--3" Swan, Light Green, pg. 15, #1040 -----	20.00
6--7" Candy Box & Cover w/gold Wildflower etch, pg. 22, #3400/9 ----	38.00
7--1 Stackaway Ash Tray, Royal Blue, pg. 25 -----	8.00
8--Caprice Cigarette Box & Cover, Crystal, pg. 27, #207 -----	12.00
9--Same as #8, Moonlight Blue -----	18.00
10--Caprice Cigarette Box & Cover, Moonlight Blue, pg. 27, #208 ----	28.00
11--Lion Bookend, pg. 33, #1129 -----	140.00
12--10" Swan, Ebony, pg. 36, #1052 -----	140.00
13--Pair 3 Holder Candelabrum w/Rosepoint etch, pg. 38, #3400/1338 --	60.00
14--8" Candy Box & Cover, Carmen, pg. 42, #3500/57 -----	68.00
15--Same as #14, Crown Tuscan w/rooses -----	70.00
16--6" ftd. Candy Box & Cover, Crown Tuscan, pg. 46, #21 -----	58.00
17--9" Belled Vase, Crystal, pg. 47, #48 (2) ea. -----	12.00
18--5" Globe Vase, Crown Tuscan w/gold Rosepoint, pg.51, #3400/102 --	85.00
19--6" 2 lite Candlestick, Crown Tuscan, pg. 52, #647 -----	30.00
20--Same as #19, Pair, Light Green, frosted -----	50.00
21--Same as #19, Moonlight Blue -----	18.00
22--Pitcher w/Wildflower etch, pg. 67, #3400/141 -----	50.00
23--3½" Candlesticks #62 and 12" Bowl #19, frosted, pg. 71 (Set) ----	55.00
24--Caprice Sugar & Cream, Moonlight Blue, pg. 77, #38 -----	18.00
25--Mt. Vernon Sugar & Cream, Carmen, pg. 80, #8 -----	58.00
26--Mt. Vernon Covered Urn, ftd., Mandarin Gold, pg. 81, #9 -----	50.00
27--Mt. Vernon 4½" Toilet Box & Cover, Mandarin Gold, pg. 83, #15 ---	35.00
28--6 oz. Sugar & Cream, Ebony w/gold band, pg. 109, #20 -----	40.00
29--Same as #28, Azurite -----	75.00
30--Same as #28, Avocado -----	75.00
31--"Colonial" Toy Tea Set, Crystal, pg. 120, #2630 -----	75.00
32--"Colonial" Sugar and Cream, Dark Green, pg. 120, #2630 -----	45.00

REFERENCE FOR THE FOLLOWING: WELKER REPRINT #2

#33--Tally-Ho 6 oz. cups, Carmen, pg. 8, #1402/78 (8) ea. -----	\$ 15.00
34--Cups only, Carmen, pg. 9, #3400/54 (6) ea. -----	8.00
35--28 oz. Ftd. Decanter, Amethyst, pg. 16, #1321 -----	30.00
36--Individual Sugar & Cream, etched Elaine, pg. 19, #3500/15 -----	20.00
37--Tally-Ho 10" Top Hat, Dark Green, pg. 42, #1402/139 -----	115.00
38--Tally-Ho 12" Center Bowl, Dark Green, pg. 42, #1402/32 -----	25.00
39--1 oz. Cordial, Carmen, pg. 51, #1066 Line -----	20.00
40--1 oz. Wine, Carmen, pg. 52, #3111 Line -----	20.00
41--1 oz. Cordial, Royal Blue, #3126 -----	20.00
42--Daffodil 2½ oz. Wines, pg. 62, #3779 Line (4) ea. -----	15.00
43--Regency Cocktail, light pink bowl, pg. 64 -----	20.00
44--Adonis 5 oz. ftd. Tumblers, pg. 66 (6) ea. -----	14.00
45--Adonis 2 oz. Sherry, pg. 76, (shape only) (2) ea. -----	18.00
46--Same as #35, Crystal w/Adonis cutting -----	95.00
47--6" 2 lite Candlesticks w/Daffodil etch, pg. 81, 3900/72 (Pair) --	45.00
48--10" Urn & Cover, etched Elaine, pg. 87, #3500/41 -----	65.00
49--5½ oz. Candy Horn, pg. 116, #2833 -----	25.00
50--Pencil Dog, Royal Blue, no harm nick in base -----	65.00

POSTAGE AND INSURANCE EXTRA - OHIO RESIDENTS ADD 4% SALES TAX

Please send SASE with your WANT list - All requests will be answered!

An Invitation to Attend the

15th Annual Licking County YWCA

ANTIQUE SHOW & SALE

**YWCA - 6th and Church St.
Newark, Ohio.**

Friday	April 23	6:00 P.M. - 10:00 P.M.
Saturday	April 24	12:00 Noon - 10:00 P.M.
Sunday	April 25	12:00 Noon - 6:00 P.M.

QUALITY DEALERS EXHIBITING GENERAL ANTIQUES
AND A BEAUTIFUL ARRAY OF CAMBRIDGE GLASS

(All Exhibits for Sale)

Door Prizes - Appraisal Booth - Good Food

DONATION \$1.75

Robert Coyle - Show Manager - Newark, Ohio (614)349-7362

TELL A FRIEND

ANNUAL

BRING A FRIEND

CAMBRIDGE, OHIO-ANTIQUES SHOW - SALE

NATIONAL GUARD ARMORY, McFARLAND DRIVE (CITY PARK)

MAY 1 10:00 AM - 9:00 PM

MAY 2 Noon - 6:00 PM

- THE SHOW THAT YOU HAVE BEEN WAITING FOR -
35 Dealers from Five States, Presenting The Best of Quality For Your Selection

Charles A. Upton, Manager

CAMBRIDGE '76

**1st ANNUAL
National Cambridge Collectors
Antique Show & Sale**

June 25, 26, 27 - 1976

*Guernsey Catholic Central High School
Rt 209 South
Cambridge, Ohio*

**Antique Show
(Sponsored by NCC)**

&

3rd Annual Convention

Cambridge Glass-----

General Antiques-----

Convention Activities-----

(MARK YOUR CALENDAR)


Show Chairman

**Evelyn Allen
135 Cynthia St.
Heath, Ohio 43055
(614)522-1635**

DEALERS



DIRECTORY

<p>ANTIQUE ALLEY 24815 Broadway Bedford, Ohio - 44146 216-232-7739 Marie Spagnola CAMBRIDGE GLASS----ROYAL DOULTON</p>	<p>BLACK ROOSTER ANTIQUES 1018 Clark Street Cambridge, Ohio--43725 614-439-2549 ----- M. Sipe CAMBRIDGE GLASS - GENERAL LINE</p>	<p>A. SPRINGBORN P. O. Box E. G. #962 Melbourne, Florida - 32935 305-254-7439 BUSINESS BY MAIL, SHOWS & PHONE!</p>
<p>COLLECTOR'S HAVEN 135 Cynthia Street Heath, Ohio - 43055 614-522-1635 SPECIALIZING IN CAMBRIDGE GLASS</p>	<p>HAROLD AND JUDY'S ANTIQUE SHOP 437 North 8th Street Cambridge, Ohio -- 43725 614-432-3045-Open by Appointment SPECIALIZING IN CAMBRIDGE GLASS!</p>	<p>HERITAGE ANTIQUES Rt. #5, Cambridge, Ohio - 43725 614-439-3241 TAKE N.8th ST.RD.(County Rd.#33) TURN LEFT AT RAILROAD TRACK.</p>
<p>HOBBY HOUSE ANTIQUES Rt. #1, Cambridge, Ohio - 43725 614-432-6971 - Frank & Lena TAKE RT.#209 W.FROM CAMBRIDGE TO RT.#658 - NORTH 1 1/2 MILES.</p>	<p>MARGARET LANE ANTIQUES 2 E. Main Street New Concord, Ohio--43762 Lynn Welker ----- 614-826-4418 CAMBRIDGE GLASS MATCHING SERVICE</p>	<p>PRESIDENTIAL COIN & ANTIQUE CO. 6222 Little River Turnpike Alexandria, Virginia - 22312 Gail B. Levine ---- 703-354-5454 WANT LISTS SOLICITED-OPEN 6 DAYS</p>
<p>LEGEND INN  1225 W. Church St., Newark, Ohio 614-344-2136 43055 ----- Dine with us and see our CAMBRIDGE GLASS COLLECTION Open 4-11 PM Daily Closed Sunday and Holidays HAROLD & MILDRED WILLEY, OWNERS</p>	<p>THIS 'N' THAT PLACE 101 South Street Chagrin Falls, Ohio -- 44022 Lue Koerper ----- 216-247-4938 OPEN THURS. - SAT.--10 AM - 5 PM</p>	<p>WAYSIDE ANTIQUES 2290 East Pike Zanesville, Ohio - 43701 614-453-4776 Maxine Ferguson CAMBRIDGE GLASS - OPEN BY CHANCE</p>
<p>NATIONAL CAMBRIDGE COLLECTORS, Inc. P. O. Box 416 Cambridge, Ohio - 43725 Address Correction Requested</p>		
<p>YOU CAN ADVERTISE YOUR ANTIQUE SHOP HERE 1 inch \$6.00 for 6 months</p>		
<p>1 inch</p>		
<p>DATES TO REMEMBER - MARK YOUR CALENDAR -- June 25, 26, 27, 1976 -- N.C.C. CONVENTION and FIRST ANNUAL ANTIQUe SHOW ----- -- August 21, 22, 1976 -- N.C.C. QUARTERLY MEETING and THIRD ANNUAL ALL CAMBRIDGE GLASS AUCTION</p>		

FIRST CLASS MAIL