

Cambridge



Crystal Ball

ISSUE NO. 47

MARCH 1977

Published monthly by the NATIONAL CAMBRIDGE COLLECTORS, Inc.
To encourage and to report the discovery of the elegant and boundless product
of the Cambridge Glass Company, Cambridge, Ohio

Thoughts from the President - - - -

With all of the snow and cold weather that we have been experiencing here in our area it hardly seems possible that our Convention is just around the corner.

We will have more details as time goes on and plans are firmed up, but the important thought at this point is to get the dates reserved on your calendar. June 24, 25 and 26. It will be here sooner than you think!

The Convention will be held in conjunction with the Club's second "Antique Show and Sale". What better way could there be to spend a weekend than this? In the company of fellow collectors and with what will probably be the largest concentration of Cambridge glass to occur anywhere this year.

Two display rooms, showing the beauty and history of the Cambridge production, plus the Show of select dealers offering quality antiques and much Cambridge glass, are on the agenda.

Your next issue of this publication will contain the details you will need to com-

plete your plans. Most importantly, DO PLAN NOW to attend.

Another thought that we feel obligated to pass on, is in regard to the use of common courtesy in dealing with our advertisers. As with so many other things, if one of us is guilty - we all get blamed.

We have received complaints that prospective buyers telephone advertisers, request a certain item be held for them and then are never heard from again. The occurrence of this situation is not often, but what a shame that is happens at all.

The dealer not only loses the opportunity to sell his merchandise, but he also becomes very reluctant to honor phone requests in the future. The only way that we can reduce this situation is to extend the courtesy that we would like to receive. Follow thru on any commitment that we make. At the very least, call back if we find that we cannot fulfill our commitments.

The "Golden Rule" is still a meaningful guide to follow in this 20th Century.

We still need all the additional members that you can get if we are to achieve our "Year of Growth".

MEMBERSHIP RENEWAL NOTICE

If the date on your Address Label is -

3-77

This is your last issue of the CRYSTAL BALL! Don't miss a single issue - RENEW YOUR MEMBERSHIP NOW!

FORM ENCLOSED FOR YOUR CONVENIENCE!

Bill

STUDY Club News

HOKEY-POKEYS

Official publication of National Cambridge Collectors, Inc., a non-profit corporation with tax exempt status. Published once a month for the benefit of its members. Membership is available for individual members at \$10 per year and additional members (12 years of age and residing in the same household) at \$3 ea. All members have voting rights, but only one CRYSTAL BALL will be mailed per household.

Back issues of the CRYSTAL BALL are available to members only, at a cost of 60¢ ea. or 12 issues for \$7.

1976-77 Officers & Committee Chairpersons

PRESIDENT ----- William C. Smith
VICE-PRESIDENT ----- David McFadden
SECRETARY ----- Janice Hughes
TREASURER ----- David McFadden

BUDGET & FINANCE ----- William C. Smith
BY-LAWS -----

CONVENTION ----- John Wolfe
MEMBERSHIP ----- Sue Rankin
MUSEUM ----- Larry Hughes
PROGRAM & ENTERTAINMENT ----- Doris Isaacs
PROJECT ----- David Rankin
PUBLICITY ----- Jack Rettig
STUDY GROUP ADVISORY ----- Frank Wollenhaupt

1977 ANTIQUE SHOW ----- Evelyn Allen
1977 CAMBRIDGE AUCTION ----- Lynn Welker

CRYSTAL BALL Editor ----- Phyllis D. Smith

CLASSIFIED ADVERTISING RATES

5¢ per word \$1.00 minimum

We cannot mix type size in classified advertisements. Abbreviations and initials will count as words. Payment in full must accompany all ads.

DISPLAY ADVERTISING RATES

	Members	Non-Members
1/8 page -----	\$ 4.00 - - -	\$ 6.00
1/4 page -----	7.00 - - -	10.00
1/2 page -----	12.00 - - -	18.00
3/4 page -----	17.00 - - -	25.00
Full page -----	22.00 - - -	33.00

DEALERS DIRECTORY

1" ad ----- \$6.00 for 6 months

Cambridge CRYSTAL BALL assumes no responsibility for items advertised and will not be responsible for error in price, description or other information.

Advertising copy must be in our hands by the 15th of each month to assure publication in our next issue. Advertisements containing reproductions will not knowingly be accepted unless clearly stated.

PLEASE ADDRESS ALL CORRESPONDENCE TO

Cambridge CRYSTAL BALL
National Cambridge Collectors, Inc.
P. O. Box #416
Cambridge, Ohio 43725

PLEASE NOTIFY US IMMEDIATELY OF ANY CHANGE
IN YOUR ADDRESS!

Please enclose a self-addressed, stamped envelope when requesting information!!

The Hokey-Pokey Study Club met in the home of Joy and Dave McFadden, Galena, Ohio, for their January 16th meeting. There were eight members present.

The entire meeting was devoted to helping one of our members research information for an upcoming article for the CRYSTAL BALL.

Some of our Show and Tell items were as follows: a pair of Lady Leg bookends in crystal (has any one ever seen them in color--if so we would like to hear about them); an electric mixer that fits over a light green mixing bowl that is marked with the triangle C in the bottom (this item will be on display at the Convention); a #2695 NearCut tankard; and an auto gear-shift knob made by the late John Degenhart. According to Mrs. Degenhart, he did not make these very long because it soon became apparent that they could be very dangerous if broken.

Our next meeting will be held at the home of Frank and Vicki Wollenhaupt in Dayton, Ohio, on February 25th.

Submitted by Phyllis Smith

CAMBRIDGE SQUARES

The Cambridge Squares met January 22nd, in the home of Charles and Mary Alice Upton of Cambridge.

Dave and Sue Rankin presented a most informative program on Color. Their information is based strictly on their years of research in the Cambridge Glass ads of the various trade publications and the Cambridge Glass catalogs. They re-

- continued on page 11

Let's Get Acquainted

by Phyllis Smith



Our attention this month is focused on another of our hard working fellow members - Doris J. Isaacs.

Doris was appointed to your Board of Directors in August, 1976, to fill the unexpired term of Charles Upton. She holds the position of Program and Entertainment Chairman for 1976-1977 and has contributed information and many articles for publication in the CRYSTAL BALL.

Wife, mother and homemaker are adjectives usually used to describe a busy woman these days, but one must use many more when speaking of this lady.

For example: cheerleader, valedictorian, den mother, Girl Scout leader, room mother, cookie chairman, troop consultant, Day Camp troop leader, Eastern Star officer, Rainbow advisor and secretary, Sunday School teacher and Christian are but a few.

In addition there are also such descriptive words as PTA chairman and co-chairman of such activities as card parties, festivals, dances

athletic banquets, nominating committees and treasurer for Band parents. You might also throw in collector for such worthy causes as Heart Fund, Cancer Society, American Legion, March of Dimes, and many others.

With Doris the old saying was never more true, "If you want a job done well - ask a busy person to do it!".

Born July 30, 1933, in Greenwood, Indiana (the fifth of nine children), she is the daughter of Cora and Martin Smith. Hard work is something Doris has always known and accepted willingly.

Doris married her high school sweetheart Roy G. Isaacs in December, 1949 --- but continued her schooling and graduated from Bradfordsville, Kentucky High School in June, 1950.

She and Roy are the parents of three grown children. Their son Dan is 26, married and serving in the Air Force at Myrtle Beach, S. C. Sherry (Calovini) is 24, married and lives at St. Clairsville, Ohio. Karen Sue is 20, lives at home and is employed in the Finance Department of N.C.R.

Roy holds the position of Foreman of Manufacturing for N.C.R. Although she is not presently employed, Doris has worked many years as a bank teller. At present she keeps herself occupied with her antique shop "Heritage Antiques" in her home and with her volunteer jobs. She helps to deliver "Meals on Wheels" to the elderly and also donates several days each month to the gift shop in the local hospital.

Collecting Cambridge glass is a family affair with the Isaacs's. Son Dan and his wife collect both Portia and Elaine. Sherry and her husband Tom like Cambridge

-continued on page 9

NEARCUT Patterns

"NEARCUT" SPECIALS

by Phyllis Smith

NearCut patterns were not always made in a large variety of shapes and sizes, as evidenced by the "NearCut Specials" we are sharing with you this month. As you can see, these were "low" in price - but "high" in quality - as was all Cambridge glass!

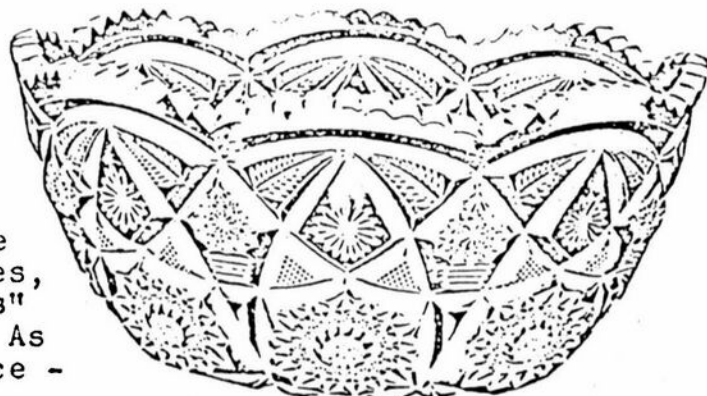
Sometimes these "specials" were marked, sometimes not. Study of the pattern is still the only real answer to recognizing these lovely old pieces.

(Photos reproduced here are from an old NearCut catalog -- approximate vintage 1910.)

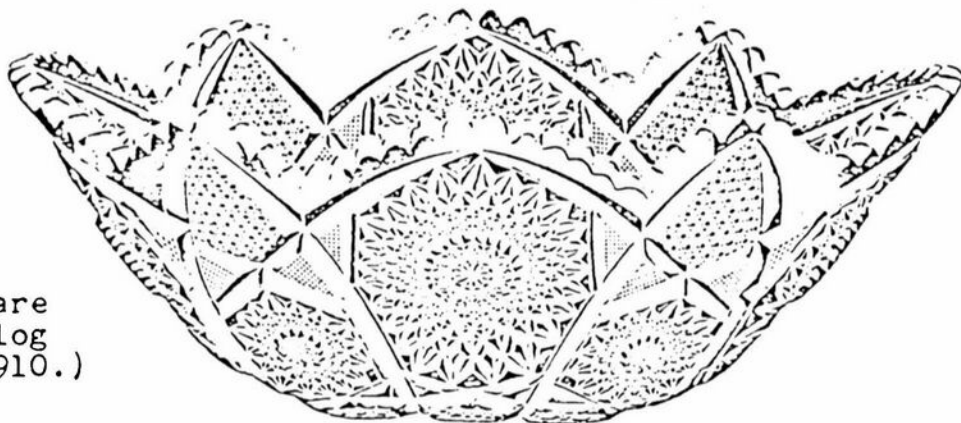
Special Leaders for Bargain Counters. Large and Showy and very fine duplicates of Real Cut.

Small Nappies

Made to Match



2670 Deep Nappy.



2676 Extra Oval Orange Bowl.



2650 Oval Orange Bowl.



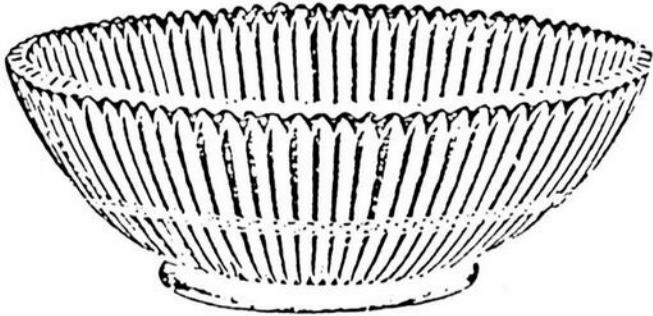
2690 Deep Nappy.

PRICE LIST.

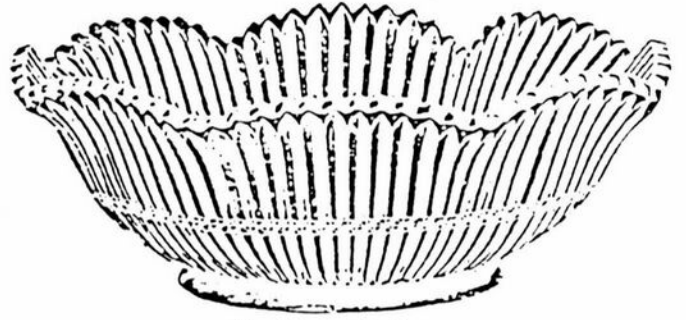
	List Price Per Pkz.	Original Pkg. Dsk.
2650—11½ inch Oval Orange Bowl	4 50	2¼
2676—12 inch Oval Orange Bowl	5 00	2¼
2670—9 inch Deep Nappy, depth 4½ inches ..	3 50	2¼
*2670—4½ inch Nappy	70	20
2630—9 inch Deep Nappy, depth 4 inches ...	3 20	2¼
*2690—4½ inch Nappy	70	20

We quote above prices for FULL PACKAGES ONLY. When LESS QUANTITY is ordered, ADD 1% PER CENT. to above prices. Items MARKED WITH * when ordered in GROSS LOTS or over take package prices.

NEARCUT™ SPECIALS.



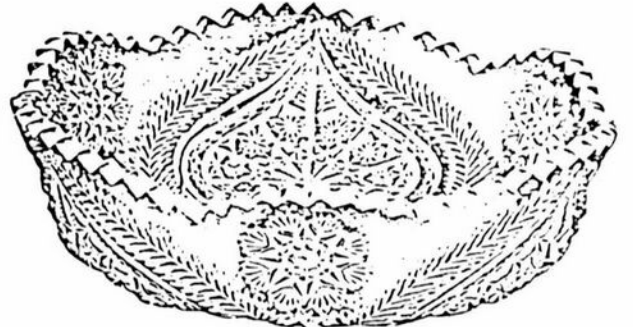
2634 Nappy A Shape.



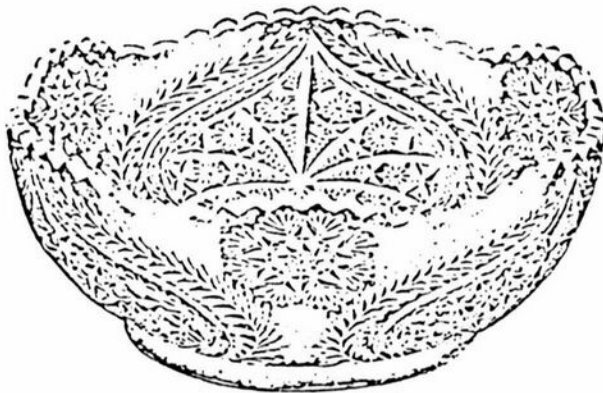
2634 Nappy E Shape.



2634 Nappy Round or A Shape.



2648 1/2 Special Nappy



2648 Nappy A Shape.



2648 Nappy C Shape.



2648 Nappy E Shape.

PRICE LIST

		List Price Per Doz.	Original Pkg. Price.
2634—9	Inch Nappy, Round or A Shape	1 65	5 1/2
2634—9 1/2	Inch Nappy, Crimped or E Shape	1 65	5
*2634—4 1/4	Inch Unfinished Round Nappy	33	25
2648—8 1/2	Inch Nappy, Round or A Shape	1 65	5 1/2
2648—9	Inch Nappy, Belled or C Shape	1 65	5 1/2
2648—9 1/2	Inch Nappy, Crimped or E Shape	1 65	5
2648 1/2—8	Inch Special Nappy	1 85	5 1/2

We quote above prices for FULL PACKAGES ONLY. When LESS QUANTITY is ordered, ADD 10 PER CENT. to above prices.

Items MARKED WITH * when ordered in GROSS LOTS or over take package prices.

Patterns

by Bill Smith

Caprice.. PART IV

UPDATE - Pistachio and Mocha are mentioned in a February, 1938 article that was found recently.

By using Price Lists that are more recent than the 1940 List published last month we have been able to put together some additional facts regarding the color production in this pattern.

The List of October 5, 1953 shows that only four colors were in current production. These were; Amber, Amethyst, Emerald (dark green), and Mandarin Gold. Caprice items were shown as "Crystal only".

In the 1958 List we find that the company was again producing Moonlight Blue. Items of Caprice were again listed crystal only.

This would indicate that all Moonlight Blue Caprice was made prior to October 1953 and provide some limits for the production of the pattern. These would be:

Crystal - Early 1936 to plant closing.
Moonlight Blue - Early 1936 until some time prior to October 1953.

La Rosa }
Pistachio } -Early 1938 to October 1943.
Mocha }
Milk Glass - About 1950 thru 1953.

We have seen Caprice items in other colors but due to the infrequent appearances, we will not try to date any other colors. It would be nearly pure speculation.

From these Price Lists and other Catalogs we can now list some additional items that were a part of the total Caprice production. We will list only the catalog number and the description of the item for simplicity. Anyone desiring knowledge of the source of reference can obtain this by requesting same.

Item numbers marked with asterisk (*) are numbers that appear in the 1940 list with a different description.

- 15* Punch Cup, 6 Oz. (open handle)
- 15* Cup and Saucer (open handle)
- 20* 5½" Coaster
- 31 13" Cake Salver, 2 pc. (Candlestick Base)
- 32 11" Cabaret Plate(w/both ¾&4 feet)
- 33 14" Cabaret Plate(w/both ¾&4 feet)
- 36 13" Cake Plate
- 52* ¼# Butter Dish w/ Lid
- 66A Banana Bowl
- 68 5" Candlestick
- 69 7½" Candelabra w/ 2 #5 prisms
- 72 6" 2 Lite Candlestick
- 73 Reflector Candleholder
- 78 6" 2 Lite Candelabrum
- 79 6" 2 Lite Candelabrum
- 83 11" Shallow Crimped Bowl
- 95* Salt Dip or Ashtray
- 96* Shakers w/ Chrome or plastic tops
- 112 3 pc. Salad Dressing Set
- 115 5" 2 Compt. Relish (same as #171)
- 117 3 oz. Oil g.s. (ground stopper)
- 120* 6" 3 Ftd. Bon Bon
- 121 5½" 3 Ftd. Bon Bon
- 122* 7" 3 Ftd. Bon Bon
- 123 7" 3 Ftd. Bon Bon
- 124 7" 3 Ftd. Oval Bon Bon
- 125 8½" 3 Ftd. Plate Also shown as-
12" 3 Compt. Celery and Relish
- 137 5" Blown Comport
- 200 Stemware line which includes:
Goblet
Tall Sherbet
Cocktail
Wine
5 oz. Ftd. Tumbler
Ftd. Ice Tea
- 209 Cigarette Box (Same as #208)
- 214 3" Ashtray
- 215 4" Ashtray
- 216 5" Ashtray
- 478 15" Ftd. Punch Bowl (5 quart)
- 1564 5 Lite Candelabra w/bobeche&prisms
- 1566 Epergne w/bob.,prisms,arms & vases
- 1577 5 Lite Candelstick 6"H X 11"L.

The Following are all MILK GLASS

- W-90 3 oz. Oil g.s.
- W-91 3 Lite Candlestick
- W-124 4½" Vase
- W-125 3½" Vase

Next month - the conclusion of our Caprice presentation. HAPPY COLLECTING



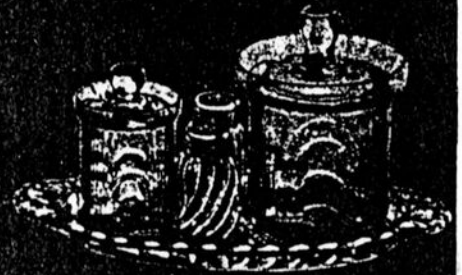
Caprice



113—4 pc. Condiment Set



37—6 in. Oval Tray



85—5 pc. Condiment Set



107—5 pc. Condiment Set



90—Ind. Salt & Pepper Shaker



91—Salt & Pepper Shaker



108—5 pc. Condiment Set



86—3 pc. Mustard & Oil Set



87—Mustard & Cover



89—Marmalade & Cover



114—4 pc. Condiment Set



38—Sugar & Cream



104—3 pc. Oil & Vinegar Set



88—3 pc. Marmalade & Mustard Set



39—3 pc. Sugar & Cream Set



92—Ind. Salt & Pepper Shaker



101—3 oz. Oil w stopper



109—5 pc. Condiment Set

Patent numbers 98794, 98825, 98993, 99448.

JANUARY 1, 1940



Caprice



169-6 in. Heart



170-6 1/2 in. Club



171-6 in. Diamond



172-6 in. Spade



122-8 in. 3 Compt. Relish



102-9 in. Pickle



173-6 1/2 in. Cloverleaf



124-8 1/2 in. 3 Compt. Celery & Relish



103-12 in. Celery



119-5 1/2 in. 2 Compt. Relish



120-6 3/4 in. 2 Compt. Relish



126-12 in. 4 Compt. Relish



115-5 in. 2 Compt. Relish (Diamond)



136-7 in. Tall Comport



167-6 in. Candy Box & Cover also 168-6 in. 2 Compt. Candy Box & Cover



165-6 in. 3 Ftd. Candy Box & Cover

Patent numbers 98794, 98825, 98993, 99448.

JANUARY 1, 1940

Acquainted

continued from page 3--

Square and Karen has over a hundred pieces of Chantilly. Roy is a collector of small items such as cordials, footed salts, toothpick holders, etc., and Doris is always searching for another piece of dark emerald green Mt. Vernon to go with the sixty some pieces she now owns.

Doris pretty much summed up her feelings and values in a recent letter in which she wrote, "I've always loved beautiful old china and silver so it was a natural for me to become interested in Cambridge glass when Roy transferred here (Cambridge, Ohio) in January, 1972. I love the quality of the fine pieces of Cambridge glass and feel strongly that it is a part of this community's heritage that should be preserved."

We all share your sentiment Doris!

China, Glass & Lamps



October, 1934

The Narcissus Bulb Vase, above, sells readily and profitably because it is attractive. Designed to hold four bulbs, it is useful for other bulbs, such as Hyacinth and Lily-of-the-Valley, as well as Narcissus. Done in the wide selection of masterful CAMBRIDGE colors.

An Open Letter To The Membership

The members of the 1977 Convention Display Room Committee would like to enlist your participation in this years display. Regardless of whether you are a novice or advanced collector, we need your help. All members planning to attend the Convention are urged to get involved. We need members to volunteer their services to man the display rooms.

We plan for one display room to contain pieces which would depict the entire production period of Cambridge glass, from the Near-Cut era to the plant closing. We will endeavor to have examples of the rare and unusual, as well as the common. Our plan for the second room will be to allow each member to display a small portion of his or her collection. For example, if you collect bridge hounds, your mini-display could be a number of bridge hounds in assorted colors. This would offer collectors the opportunity of viewing more colors or styles of an individual item than we could depict in the main display room. It will also give you the opportunity of meeting other club members with similar collecting interests.

We would like to know as soon as possible what unusual items of Cambridge glass you have available for the main display room. (For your information: Your glass will be handled by yourself and the display room committee ONLY. Insurance will be provided by the club.)

We would also like to know what specialty mini-collections you have to share with others. If you have more than one, let us know about each one, as we will eliminate duplications this way. Table covers will be provided and the approximate space for the mini-displays will be 18 to 24 inches in width and 30 inches in depth. The enclosure of a self-addressed, stamped envelope in your reply will help your club defray costs. Send your reply to the club address in care of the Display Committee.

YOUR 1977 DISPLAY ROOM COMMITTEE

Vicki Wollenhaupt, Larry Hughes, Joy McFadden, Charles Upton

PRICES here & there

by Bill and Phyllis Smith

Hope you will bear with us a bit this month while we digress just a little from our usual price quoting procedure. The Smith's were fortunate enough to spend a couple of weeks in Florida this month and we would like to share some of our Cambridge glass buying experiences with you.

We spent as much of the two weeks as was possible in attending Flea Markets (they seem to be in endless supply), Shows (both Depression Glass and Antiques), and every Shop we could find open along the way.

We soon realized as we were shopping around that we were getting a pretty good education on Cambridge prices from all over the country. Very few of the dealers we talked with were from Florida - but were just down there for the winter and their prices were pretty much a reflection of the area from whence they came.

We feel sure that by this time you are as aware as we, that Cambridge prices tend to be lowest in the northeast, a little higher in the southeast and midwest, and reach their peak by the time they have traveled to the west coast. Of course there are always exceptions to this - but for the most part it seems to hold true.

Our biggest thrill, as always, was attending the all depression glass shows. Don't know if any of you are still passing these shows by, but if so - give them a try, we guarantee you will love them. The thrill of seeing all that beautiful colored glassware on display is well worth the price of admission! The amount of Cambridge glass you can find at a depression glass show is increasing every day - especially the better quality

pieces. Anyone who still thinks depression glass is just old cheap glassware is surely behind the times.

We saw more Cambridge glass than we could possibly buy, but we did manage to add about eighty-five new pieces to our collection. We had hoped we would find some we could bring back for re-sale, but as luck would have it everything we found was something we did not have - so it all went on the shelf for us to admire.

A few items we found at shows are as follows: a pale pink Mandalin Lady figure flower holder \$58.50; a peachblo 8" Draped Lady flower holder with oval base \$50; a Seashell (snail) pitcher in crystal \$35 and a small Urn with lid in crystal etched Valencia \$35.

Flea markets seemed to be everywhere you looked and some were a complete waste of time while others produced several pieces of truly fine Cambridge glass. One in particular offered up a lovely pair of crystal Martha Washington lamps for \$10 and a dark emerald green pretzel jar in Martha Washington pattern for \$15. Another place we found a Bennett juicer in the large orange juice size for \$7 and a Near Cut Marjorie punch bowl with base and 8 cups for \$35.

The shops we visited were not much different than shops everywhere. Some were lovely while others made you wonder how they managed to stay in business. In one we found a lovely Near Cut "Spoons" pattern pitcher. Unfortunately it has a small chip on the handle - but for \$18 we could not pass it by.

We saw moonlight blue Caprice cups and saucers sell for \$16 per set, but we did not buy them. Dealers said that blue Caprice moves very well down there.

Do hope we have not bored you with our dissertation - next month it's back to business as usual!

STUDY Club News

continued from page 2 --

minded us that revisions must be made constantly as more information becomes available.

At this point the questions of Carmen versus Ruby can be answered thus - In all the available material the Cambridge red was always called Carmen, but sometimes Ruby was used as a descriptive term. The old Carmen was darker because of formula differences.

We had a good variety of colors to compare and keeping in mind the colors different pieces had been advertised in and putting several shades of the same color together certainly proved interesting.

A Blue Willow dinner plate was purchased from Charles Upton to be used for raising funds for a special project.

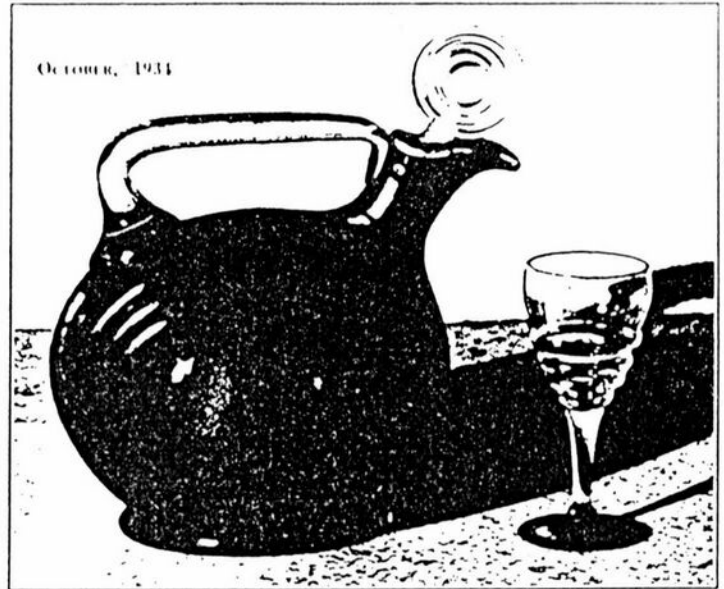
Show and Tell items included a Bunny box in Tahoe Blue, sugar and creamer in cobalt, pistachio pencil dog, carmen juice glass with #731 etching, a light emerald grn. Stratford salt and a very early vase in a greenish blue color. We will talk the owner into bringing this piece to the Quarterly meeting!

Next meeting will be February 26th and will be hosted by John Wolfe of Cambridge.

Submitted by Doris Isaacs

"Charity is never lost; it may meet with ingratitude, or be of no service to those on whom it was bestowed, yet it ever does a work of beauty and grace upon the heart of the giver."

_____ Middleton



October, 1934

The Nautilus design is an outstanding creation. Wine sets are especially attractive because of the striking decanter and the handsome glasses. Done in Crystal, Amber, Royal Blue, Forest Green, Amethyst and Carmen and combinations of crystal and color. Protected by Design Patents 84082 and 89828.

Classified

FOR SALE: STRADIVARI STEMS (Welker Catalog II, page 63) 11 - 10oz. goblets \$9 each; 11 - 7oz. sherbets \$9 each. GEORGIAN mundae, Carmen, 5 - \$9 ea. FTD. TUMBLERS - ROYAL BLUE FOOT (193C-34 Reprint, page 33-B-5 w/etching like Lynbrook) 5 - 5" ftd. tumblers \$9 each and 8 - 4" ftd. tumblers \$6 each. Presidential Coin and Antique Co., Inc., 6222 Little River Turnpike, Alexandria, Virginia 22312. Phone 703-354-5454.

FOR SALE: Refer to February OLD CLITHERALL GRANARY display ad. Phone number is 218-864-8157. Will give discounts.

WANTED: CAMBRIDGE #3400 Series AMBER. Have saucers, cups, cream and sugar, 5 1/2" bowls, 7-3/4" plates, and 6" plates. Need rest. Charles Edstrand, 10015 Tracy Trail, Cleveland, Ohio 44130.

WANTED: ROYAL BLUE CAMBRIDGE TRAY. 17 1/2" diameter to fit punch bowl. Write: Mrs. Robert Veigel, 511 Roosevelt, Hereford, Texas 79072.

FINDER'S KEEPER'S ANTIQUES

P.O. Box 303
Dayton, Ohio 45401

P.O. Box 16023
Columbus, Ohio 43216



Specializing In
Cambridge Glass

Send large SASE for list

- PLEASE SUPPORT OUR ADVERTISERS -

DEALERS



DIRECTORY

<p>ANTIQUÉ ALLEY 24815 Broadway Bedford, Ohio 44146 216-232-7739 ---- Marie Spagnola CAMBRIDGE GLASS ROYAL DOULTON</p>	<p>BENICIA ANTIQUE SHOP 305 First Street Benicia, California 94510 OPEN 11 AM - 5 PM Closed Monday Z. E. LOPES - 707-745-0978 VISIT HISTORIC BENICIA and its 28 shops Off Interstate #80 ----- ----- North of San Francisco</p>	<p>BARBARA COOPER'S DEPRESSION SHOP 97 Weaver Street Montgomery, N. Y. 12549 CAMBRIDGE, HEISEY, DUNCAN MILLER and DEPRESSION ---- 914-457-3659</p>
<p>BLACK ROOSTER ANTIQUES 1018 Clark Street Cambridge, Ohio 43725 614-439-2549 ----- M. Sipe CAMBRIDGE GLASS - GENERAL LINE</p>		<p>FINDER'S KEEPER'S ANTIQUES P.O. Box 303 P.O. Box 16023 Dayton, O. Columbus, O. 45401 43216 513-254-2937 614-965-1906 SPECIALIZING IN CAMBRIDGE GLASS!</p>
<p>D'MARIE'S ANTIQUES Rt. #1, c/o Eastern Antique Mart Thornburg, Virginia 22565 703-582-5755 ----- Jim Rankin OPEN DAILY - EXCEPT MONDAY</p>	<p>THE DARROW COLLECTION Highway 1A and Jungle Hut Road Flagler Beach, Florida 32036 Phone 904-445-3805 Mail Address: Rt. #1, Box 167 St. Augustine, Florida 32084</p>	<p>GEORGE HOFFMAN ANTIQUES 129 South 4th Street Newark, Ohio 43055 --- 614-345-8550 ---</p>
<p>MARY & WILBUR HENDERSON 303 Guilford Avenue Woodsfield, Ohio 43793 SHOWS Only -- 614-472-1133 SPECIALIZING IN CAMBRIDGE GLASS!</p>	<p>HERITAGE ANTIQUES Rt. #5, Cambridge, Ohio - 43725 614-439-3241 TAKE N. 8th St. Rd. (County Rd. 733) TURN LEFT AT RAILROAD TRACK.</p>	<p>'OUR GLASS ANTIQUES 20th CENTURY COLLECTIBLES featuring CAMBRIDGE GLASS Paul & Ginny Henderson - Box 134 Iselin, NJ 08830 -- 201-283-3181</p>
<p>HOBBY HOUSE ANTIQUES Rt. #1, Cambridge, Ohio - 43725 614-432-6971 - Frank & Lena TAKE RT. #209 W. FROM CAMBRIDGE TO RT. #658 - NORTH 1 1/2 MILES.</p>	<p>THIS 'N' THAT PLACE 101 South Street Chagrin Falls, Ohio -- 44022 Lue Koerper ----- 216-247-4938 OPEN THURS.-SAT. - 10 AM - 5 PM</p>	<p>MARGARET LANE ANTIQUES 2 E. Main Street New Concord, Ohio 43702 Lynn Welker ----- 614-820-4418 CAMBRIDGE GLASS MATCHING SERVICE</p>
<p>LEGEND INN  1225 W. Church St., Newark, Ohio 614-344-2136 43055 ----- Dine with us and see our CAMBRIDGE GLASS COLLECTION Open 4-11 PM Daily Closed Sunday and Holidays HAROLD & MILDRED WILLEY, OWNERS</p>	<p>A. SPRINGBORN P. O. Box E. G. #962 Melbourne, Florida - 32935 Shop #34, Webster, Florida OPEN EVERY MONDAY 305-254-7439</p>	<p>OLD TOLL GATE ANTIQUES Rt. #5, Box 7X Milan, Illinois 61264 SPECIALIZING IN HAVILAND CHINA</p>
<p>PRESIDENTIAL COIN & ANTIQUE CO 6222 Little River Turnpike Alexandria, Virginia - 22312 Gail B. Levine ---- 703-354-5454 WANT LISTS SOLICITED-OPEN 5 DAYS</p>	<p>NATIONAL CAMBRIDGE COLLECTORS, INC. P. O. Box #416 Cambridge, Ohio - 43725</p>	
<p>WILMA SAXTON P. O. Box 43, Berlin, N.J. 08009 CAMBRIDGE, HEISEY, ROYAL DOULTON SHOWS & MAIL ORDER--609-767-1470 or Call TOLL FREE 800-257-8161</p>		
<p>HOFF - HAVEN ANTIQUES 21 Half Moon Lane Tarrytown, New York 10591 No Lists-Shows-Mail-914-631-2140 CAMBRIDGE, Rose In Snow Fostoria</p>	<p style="text-align: center; font-size: 2em; transform: rotate(-15deg);">FIRST CLASS MAIL</p>	