

Cambridge



Crystal Ball

ISSUE NO. 51

JULY 1977

Published monthly by the NATIONAL CAMBRIDGE COLLECTORS, Inc.
To encourage and to report the discovery of the elegant and boundless product
of the Cambridge Glass Company, Cambridge, Ohio

Thoughts from the President - - - -

By the time that this issue reaches you, our 1977 Convention and Show will be events of the past. Hopefully all that will have attended will be safely home and fully recovered from the activities.

The annual committee reports will be given at the Sunday Meeting during the Convention but we are able to predict to a degree how they will develop.

Our membership will have finally exceeded the 500 mark. The applications have been coming in very well the past three months and especially well these last few days. We are hopeful that this is an indication of a major turning point and that we shall continue to grow at a more rapid pace.

Recent discussion with our publisher of the 1930-34 Reprint indicates that sales of the book are very near the 4000 mark. Hopefully we will be reprinting very soon. Our Treasurer continues to report that this has, by far, been the best income producer that the club has. So good, that the Board of Directors voted at our last meeting to publish a second reprint. This material will cover the 1949 thru 1954 period of the Cambridge production, and will also include a Price Guide.

Our audit (shown elsewhere in this issue), indicates that as of the end of 1976 we had

MEMBERSHIP RENEWAL NOTICE	
If the date on your Address Label is --	7-77
This is your last issue of the CRYSTAL BALL! Don't miss a single issue - RE-NEW YOUR MEMBERSHIP NOW!	

a balance in excess of \$11,000 free and unincumbered. Considerably improved over the balance of \$2,400 plus shown at the end of March, 1976.

The programs at our Quarterly meetings have been well prepared and have been attended by an increasing number of members. We will soon know how the attendance figures will apply to the Annual Meeting.

All of which would lead us to the conclusion that the 1976-1977 Club Year has been a "Year of Growth". It has been a year of effort by many, and this is apparent in the results.

We would like to take this opportunity to extend our sincere Thank You to all of the many members that have been working to make the 1977 Convention and Show another great success. These people have devoted long and faithful hours to this purpose and they deserve the thanks of all of us!

We would also extend our Thanks to the many members who will be attending the functions from the more distant locations. It is always more pleasurable to work toward a project that will be shared by many. That so many of you would include our activities in your vacation plans is very rewarding. We also enjoy very much the opportunity to meet face to face with so many of you that we normally meet only by mail or phone.

With extended efforts such as we have seen this past year, the 1977-1978 year can only be another very successful year. Could it possibly become the "Year of the Museum"?

CAMBRIDGE CRYSTAL BALL

Official publication of National Cambridge Collectors, Inc., a non-profit corporation with tax exempt status. Published once a month for the benefit of its members. Membership is available for individual members at \$10 per year and additional members (12 years of age and residing in the same household) at \$3 ea. All members have voting rights, but only one CRYSTAL BALL will be mailed per household.

Back issues of the CRYSTAL BALL are available to members only, at a cost of 60¢ ea. or 12 issues for \$7.

1976-77 Officers & Committee Chairpersons

PRESIDENT ----- William C. Smith
VICE-PRESIDENT ----- David McFadden
SECRETARY ----- Janice Hughes
TREASURER ----- David McFadden

BUDGET & FINANCE ----- William C. Smith
BY-LAWS -----
CONVENTION ----- John Wolfe
MEMBERSHIP ----- Sue Rankin
MUSEUM ----- Larry Hughes
PROGRAM & ENTERTAINMENT ----- Doris Isaacs
PROJECT ----- David Rankin
PUBLICITY ----- Jack Rettig
STUDY GROUP ADVISORY --- Frank Wollenhaupt

1977 ANTIQUE SHOW ----- Evelyn Allen
1977 CAMBRIDGE AUCTION ----- Lynn Welker

CRYSTAL BALL Editor ----- Phyllis D. Smith

CLASSIFIED ADVERTISING RATES

5¢ per word \$1.00 minimum

We cannot mix type size in classified advertisements. Abbreviations and initials will count as words. Payment in full must accompany all ads.

DISPLAY ADVERTISING RATES

	Members	Non-Members
1/8 page -----	\$ 4.00 - - -	\$ 6.00
1/4 page -----	7.00 - - -	10.00
1/2 page -----	12.00 - - -	18.00
3/4 page -----	17.00 - - -	25.00
Full page -----	22.00 - - -	33.00

DEALERS DIRECTORY

1" ad ----- \$6.00 for 6 months

Cambridge CRYSTAL BALL assumes no responsibility for items advertised and will not be responsible for error in price, description or other information.

Advertising copy must be in our hands by the 15th of each month to assure publication in our next issue. Advertisements containing reproductions will not knowingly be accepted unless clearly stated.

PLEASE ADDRESS ALL CORRESPONDENCE TO

Cambridge CRYSTAL BALL
National Cambridge Collectors, Inc.
P. O. Box #416
Cambridge, Ohio 43725

PLEASE NOTIFY US IMMEDIATELY OF ANY CHANGE
IN YOUR ADDRESS!

Please enclose a self-addressed, stamped
envelope when requesting information!!

Club News

YOU'RE INVITED TO THE 1977 FAMILY ARTS AND CRAFTS SHOW

OHIO STATE FAIR

If you should happen to be in the area of Columbus, Ohio, any time during the period of August 16th thru the 28th, and have the time, be sure to visit the Ohio State Fair and see the beautiful display of glassware in the Arts & Crafts Building from 8 AM to 9 PM daily. The display will close at 6 PM on the 28th.

There are many categories in which Cambridge glass will be entered, and as in year's past, it is hoped that Cambridge glass will once again be awarded many ribbons for it's outstanding beauty in both color and design.

It will be well worth your time and effort to visit this outstanding display.

National Cambridge Collectors will award the Premiums for Class 9932-A Carmen, for the Antiques Glassware category.

STUDY Club News

HOKEY-POKEYS

The Hokey-Pokey Study Club met at the home of the Rankins on June 5, 1977. In attendance were eight members and one guest.

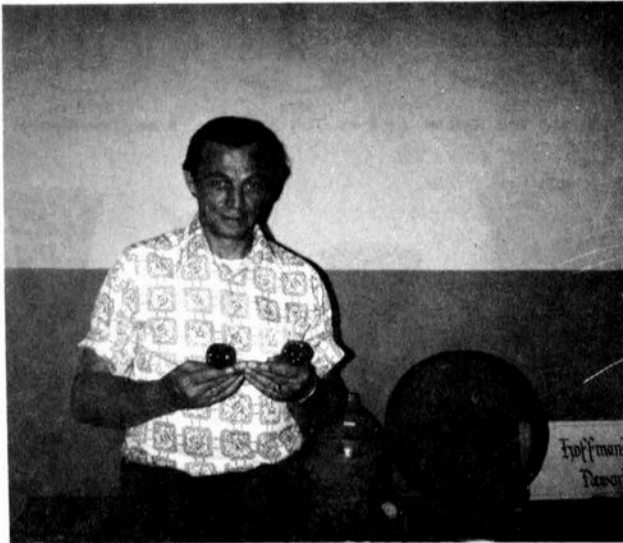
"Show and Tell" included a pink 12 oz. Georgian tumbler with a double row of diamonds as seen in the 1930-1934 Catalog Reprint on page 44, #1202; a Daisy arch foot Near-Cut candlestick; a crystal glass rolling pin made by the Imperial Manufacturing Company of Cambridge, Ohio; and a covered casserole in Guernsey Ware.

We spent the meeting time formulating our plans for further work in the field of research regarding Cambridge glass.

Submitted by Joy McFadden

Let's Get Acquainted

by Phyllis Smith



As promised in the April, 1977 issue of the CRYSTAL BALL, we wish to introduce you to a really fine gentleman, and one of our newest members of our Board of Directors, Mr. George W. Hoffman.

Born in Harrisburg, New York, on September 4, 1932, George is the second child of seven born to Edward and Elva Hoffman.

Attending school in Carthage, New York, he graduated from Augustinian Academy in June of 1949. While in high school George was interested in ice skating, basketball, and was a member of the Glee Club.

After graduation he enlisted in the United States Marines and served his country for eight years, attaining the rank of M/Sgt. in the Field Artillery. For his action in Korea, George received two Silver and one Bronze Stars.

After his discharge from the Marines, he moved to Newark, Ohio, where he has been self-employed as an antique dealer and show promoter for the past fifteen years. George is a bachelor and resides in his home and antique shop located at 129 South 4th Street in Newark.

George has been interested in antiques for as long as he can remember and is quite

knowledgeable in all aspects of the business ranging from furniture, silver, primitives and all types of fine glassware, china and pottery.

He became a member of N.C.C. in May, 1974, and is the holder of membership card #317. He has served on the "Show and Tell" panel for the 1976 Convention and was appointed to the Board of Directors in March, 1977.

He has from time to time been the owner of many outstanding collections of various glass, but is presently involved with collecting Cambridge glass ivy balls. He has them in many unusual colors, but is hoping to find one in Heatherbloom.

Besides being an active member of National Cambridge Collectors, he also belongs to such organizations as the United Commercial Travelers, the Eagles, the Heisey Collectors of America, and the National Duncan Glass Society. He is also a member of St. Francis Church of Newark, and is an accomplished organist.

George is a great asset to the Board of Directors and to N.C.C. because of his willingness to help in any way possible and to share with others his vast knowledge of Cambridge glass.

QUARTERLY MEETING

If you are planning to attend the Auction, why not make plans to come early and attend the Quarterly Meeting at 8 PM, Friday evening, August 5th?

If you do, you will be rewarded for your efforts with a "Sneak Preview" of all the beautiful Cambridge glass that will go to the highest bidder, starting at 11 AM, on Saturday, August 6th. Bring your "Questionable" glass along for "Show & Tell" and plan on having a good time enjoying the fellowship of other Cambridge glass collectors!

Don't forget to make your Motel reservations with Lynn Welker, P. O. Box 416, Cambridge, Ohio 43725 or Phone 614-826-4418!! - - - - - See You There!!!!

DAFFODIL



GENUINE
HAND MADE
Cambridge
MADE IN U.S.A.

This information has been
furnished by Lynn Welker



3779
9 oz. Tall Goblet



3779
6 oz. Tall Sherbet



3779
6 oz. Low Sherbet



3779
9 oz. Low Goblet



3779
3 oz. Cocktail



3779
2½ oz. Wine



3779
4½ oz. Claret



3779
4½ oz.
Oyster Cocktail



3779
1 oz.
Cordial



3779
5 oz. Ftd.
Tumbler



3779
12 oz. Ftd.
Ice Tea



P. 55
6 in. 2 Hdl. Low Ftd. Basket



P. 430
12 in. Bowl, belled



3400/141
76 oz. Jug



P. 248
11 in. Celery



P. 384
11 in. Oval Bowl



3400/1180
5¼ in. Bonbon, 2 Hdl.



P. 214
10 in. 3 part Relish



P. 533
3 pc. Mayonnaise Set



P. 54
8½ in. 2 Hdl. Low Ftd. Comport



P. 1491
4 pc. Twin Salad Dressing Set



6004
8 in Ftd. Vase



P. 533/445
2 pc. Mayonnaise Set



P. 56
8 in. 2 Hdl. Low Ftd. Plate



1176
8½ in. Salad Plate



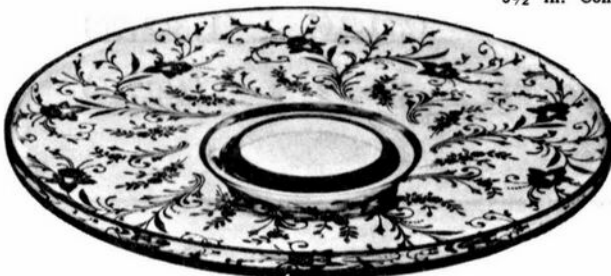
P. 533
5½ in. Comport



3400/1181
6 in. 2 Hdl. Bonbon Plate



278
11 in. Vase, Ftd.



P. 166
13½ in. Cabaret Plate, r.e.



1495—11½ in. 2 Hdl.
Cake Plate

ETCHED DAFFODIL

Inspired by one of the most beautiful of spring flowers, Daffodil, etched in brilliant American hand-made Cambridge crystal for your finest table

- 3779 9 oz. Tall Goblet
- 3779 6 oz. Tall Sherbet
- 3779 9 oz. Low Goblet
- 3779 6 oz. Low Sherbet
- 3779 3 oz. Cocktail
- 3779 2½ oz. Wine
- 3779 4½ oz. Oyster Cocktail
- 3779 4½ oz. Claret
- 3779 1 oz. Cordial
- 3779 12 oz. Ftd. Ice Tea
- 3779 5 oz. Ftd. Tumbler
- 1176 8½ in. Salad Plate
- P. 54 6½ in. 2 Hdl. Low Ftd. Comport
- P. 55 6 in. 2 Hdl. Low Ftd. Basket
- P. 56 8 in. 2 Hdl. Low Ftd. Plate
- P. 166 13½ in. Cabaret Plate, r.e.
- P. 214 10 in. 3 part Relish
- P. 248 11 in. Celery
- P. 253 1nd Sugar & Cream
- P. 254 Sugar & Cream
- P. 293 6 oz. Oil
- P. 306 6 in. Candy Box & Cover
- P. 360 Salt & Pepper, chrome top
- P. 384 11 in. Oval Bowl
- P. 430 12 in. Bowl, belled
- P. 532 6 in. Tall Comport
- P. 533 3 pc. Mayonnaise Set
- P. 533 5½ in. Comport
- P. 533/445 2 pc. Mayon. Set
- P. 1491 4 pc. Twin Salad Dressing Set
- F. 1495 11½ in. 2 Hdl. Cake Plate
- 3400/141 76 oz. Jug
- 3400/1180 5¼ in. 2 Hdl. Bonbon
- 3400/1181 6 in. 2 Hdl. Bonbon Plate
- 3900/72 6 in. 2 lite Candlestick
- 278 11 in. Ftd. Vase
- 628 3½ in. Candlestick
- 6004 8 in. Ftd. Vase



532
6 in. Tall Comport



628
3½ in. Candlestick



3900/72
6 in. 2 lite Candlestick



P. 254
Sugar & Cream



P. 293
6 oz. Oil



P. 306
6 in. Candy Box & Cover, cut knob



P. 360
Salt & Pepper w/Chrome tops



P. 253
Individual Sugar & Cream



THE CAMBRIDGE GLASS COMPANY
CAMBRIDGE, OHIO

National Cambridge Collectors, Inc.
Statement of Operating Income and Expenses
For the Years Ended December 31, 1976 and 1975 ***

	<u>December 31,</u> 1976	<u>December 31,</u> 1975
Income:		
Prorated membership dues	\$ 3,164.61	\$ 2,464.03
Advertising	598.60	424.60
Sales of back issues of Crystal Ball	363.10	105.40
Other	<u>138.45</u>	<u>360.62</u>
Total income	<u>4,264.76</u>	<u>3,354.65</u>
Expenses:		
Advertising	165.03	14.00
Office supplies	175.80	124.16
Postage and box rental	894.25	428.87
Printing Crystal Ball	641.04	1,758.04
Other	<u>102.56</u>	<u>108.08</u>
Total expenses	<u>1,978.68</u>	<u>2,433.15</u>
Net operating income	2,286.08	921.50
Beginning Operating Fund Balance (deficit)	<u>(421.46)</u>	<u>(1,342.96)</u>
Ending Operating Fund Balance (deficit)	<u>\$ 1,864.62</u>	<u>\$ (421.46)</u>

National Cambridge Collectors, Inc.
Statement of Museum Income
For the Years Ended December 31, 1976 and 1975 ***

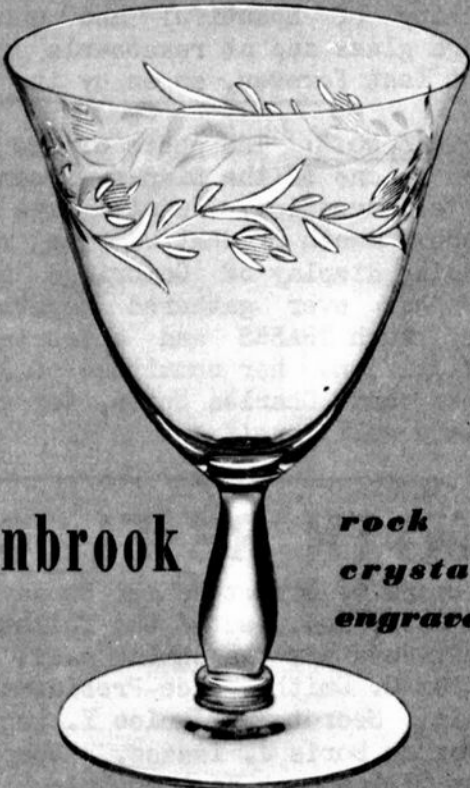
	<u>December 31,</u> 1976	<u>December 31,</u> 1975
All Cambridge Glass Auction	\$ 757.42	\$ 995.39
Antique Show	1,518.42	-
1930-34 Catalog Reprints:		
Royalties	1,564.50	-
Sales, net	2,898.46	-
Interest	344.37	57.07
Donations	99.21	575.14
Other	<u>104.08</u>	<u>-</u>
Net income to museum fund	7,286.46	1,627.60
Beginning Museum Fund Balance	<u>2,318.65</u>	<u>691.05</u>
Ending Museum Fund Balance	<u>\$ 9,605.11</u>	<u>\$ 2,318.65</u>

National Cambridge Collectors, Inc.
 Comparative Balance Sheets
 At December 31, 1976 and 1975 ***

Assets	<u>December 31,</u> 1976	<u>December 31,</u> 1975
Cash:		
Operating funds	\$ 3,705.54	\$ 271.88
Invested	<u>9,112.17</u>	<u>2,762.17</u>
	12,817.71	3,034.05
Receivables	1.50	4.24
Book inventory	836.58	-
Museum display assets	45.00	45.00
Other assets	<u>428.15</u>	<u>379.37</u>
Total assets	<u>\$ 14,128.94</u>	<u>\$ 3,462.66</u>
Liabilities and Members' Equity		
Accounts payable	\$ 985.25	\$ -
Deferred membership dues	1,575.96	1,474.22
Other deferred income	<u>98.00</u>	<u>91.25</u>
Total liabilities	<u>2,659.21</u>	<u>1,565.47</u>
Members' Equity:		
Operating fund (deficit)	1,864.62	(421.46)
Museum fund	<u>9,605.11</u>	<u>2,318.65</u>
Total members' equity	<u>11,469.73</u>	<u>1,897.19</u>
Total liabilities and members' equity	<u>\$ 14,128.94</u>	<u>\$ 3,462.66</u>

*** Report period dates have been changed to coincide with tax reporting dates.

Introduced in early 1950!




Lynbrook

*rock
crystal
engraved*

A design of pleasing refinement—dignified yet warmly charming characterizes lovely Lynbrook. The pattern is entirely hand-engraved—an artistic creation that catches light and reflects it through the rich and flawless beauty of Cambridge crystal. In-stock in the following items:

- 3790 Goblet
- 3790 Low Sherbet
- 3790 Cocktail
- 3790 Wine
- 3790 Claret
- 3790 Oyster Cocktail
- 3790 Cordial
- 3790 12 -oz. Ftd. Ice Tea
- 3790 5 -oz. Ftd. Tumbler
- 555 7½-in. Salad Plate
- P. 430 12-in. Bowl flared
- 3900/72 6-in. 2-lite Candlestick
- P. 306 6-in. Candy Box & Cover
(Cut Knob)
- 533 6-in. Compot
- P. 293 6-oz. Oil (Pol. in stopper)
- 3700 5-in. Blown Compot
- P. 254 Sugar & Cream
- P. 214 10-in. 3-part Relish
- P. 166 13½-in. Plate, r.e.
- 1532 3-pc. Mayon. Set
- P. 298 Marmalade & Cover &
Spoon
- P. 360 Salt & Pepper w/chrome top
- 3900/115 76-oz. Jug

by
Cambridge 

PRICES here & there

by Joy McFadden and Vicki Wollenhaupt

Having recently returned from a short trip to the West Coast, we felt that we could add some information to the Cambridge "Prices" column that has been running in the CRYSTAL BALL.



VICKI and JOY

While visiting in the Los Angeles area, we had the opportunity to visit the home of fellow club members Beverley and Harold Hanson, and participate in a meeting with a group of people interested in Cambridge glass. Recent finds for the group included a moonlight blue Flying Lady bowl, a carmen #3400 covered candy dish with gold encrusted Rosepoint, and a crystal Nude stem hoch glass with Vichy etching. Comments from the group led us to the opinion that the super Cambridge pieces are few and far between. This was proven true after we visited several swap meets, shows and antique shops.

People in California do not have flea markets, but swap meets. These can range from the garage junk variety to the better collectible variety. Naturally they are held outdoors and they have crowds!!

During our visit, we did find that they were lacking in figural items, swans, royal blue and carmen items, and etchings, other than Rosepoint. For example, we saw only three figural flower frogs, all of those being the crystal #518 frog. We saw

very few swans for sale, a damaged 13" ebony swan was marked \$175.00. Crown tuscan seems to be in abundance. A large crown Nude stem comport, undecorated, was marked \$125; a large crown seashell cigarette box with dolphin feet, undecorated, was marked \$115.00. We also saw a pair of single light crown Gadroon candlesticks with the rams head on the sides with a marked price of \$300.00. We saw one royal blue item which was a Sweet Potato vase marked \$27.00.

While visiting Barbara Shaeffer's All-Glass Show in Anaheim, we had the opportunity to view 200 of the estimated 2,000 baskets in a lady's collection. Cambridge was well represented in her collection with the opaques, transparents and the Near-Cut pressed patterns being in evidence.

Of course we wouldn't want you to believe that the California collector cannot sniff out the bargain because it just isn't so. Our last day in Anaheim was spent at a swap meet and one of the collectors that we had met rushed up with his find of the day which was a 3" crown tuscan swan for \$5.00.

The people in the Ohio area should consider themselves fortunate in seeing a vast quantity of beautiful and unusual Cambridge glass and at reasonable prices. It can't last forever, so enjoy it.

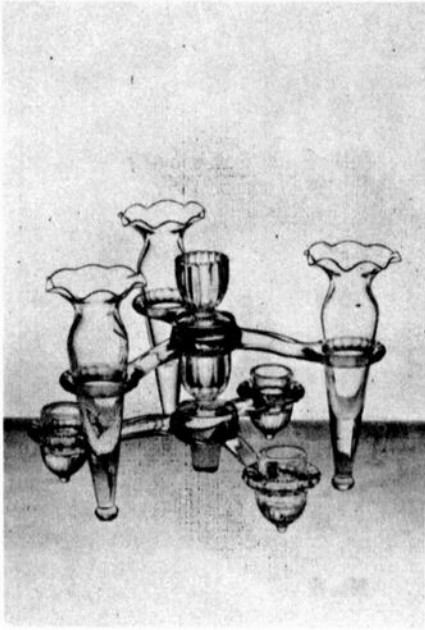
EDITOR'S NOTE: The photo of the girls was taken in one of the Display rooms at this year's Convention. We will have more photos next month of what was the most outstanding display of Cambridge glass this Club has ever gathered together at one time. Much THANKS and appreciation goes to Vicki and her committee of Joy, Larry Hughes and Charles Upton, for a job extremely well done!!

SMITH RE-ELECTED

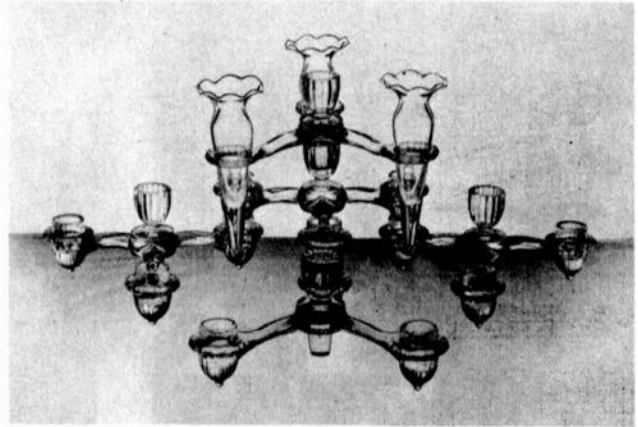
The Board of Directors met Sunday morning, June 26th, and elected the following slate of officers for the coming year: President William C. Smith; Vice-President David G. Rankin; Secretary Janice Y. Hughes; and Treasurer Doris J. Isaacs. Complete coverage will appear next month!



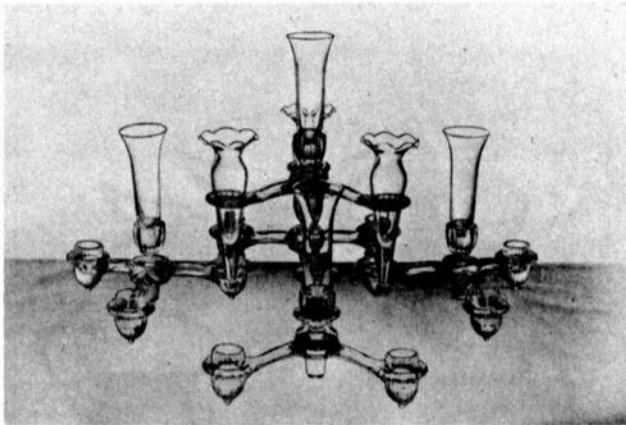
"CAMBRIDGE ARMS" Smart Table Appointments DESIGNS for DINING



No. 9



No. 10



No. 11

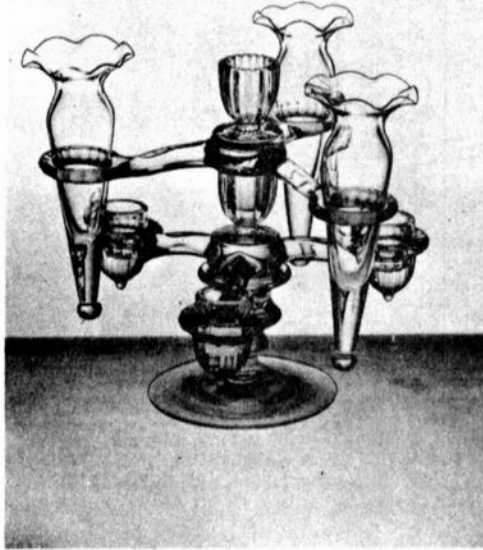


No. 12

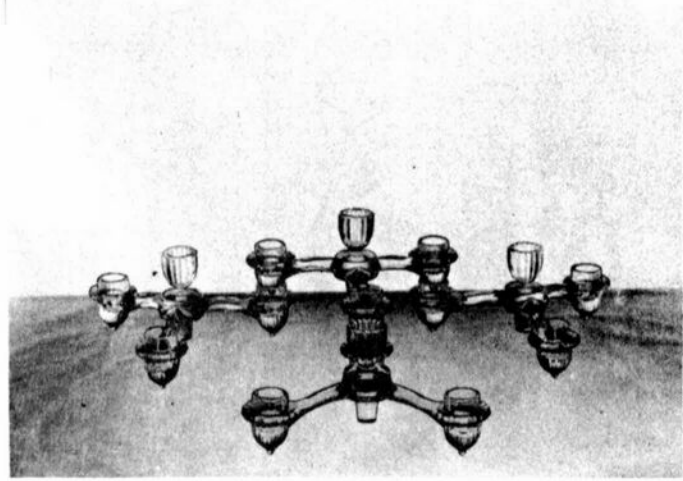
Cambridge, Ohio - - - U. S. A.



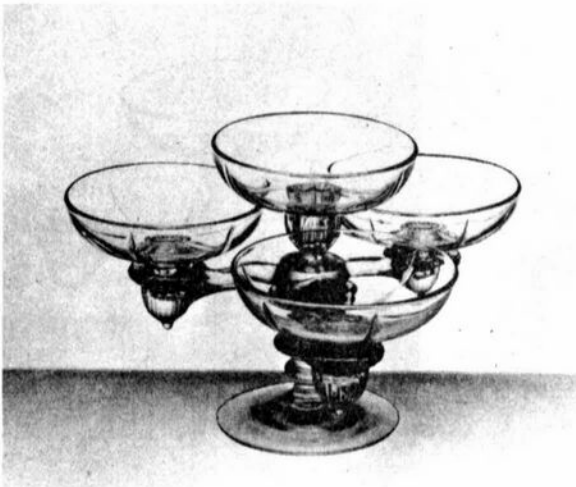
"CAMBRIDGE ARMS"
Smart Table Appointments
DESIGNS for DINING



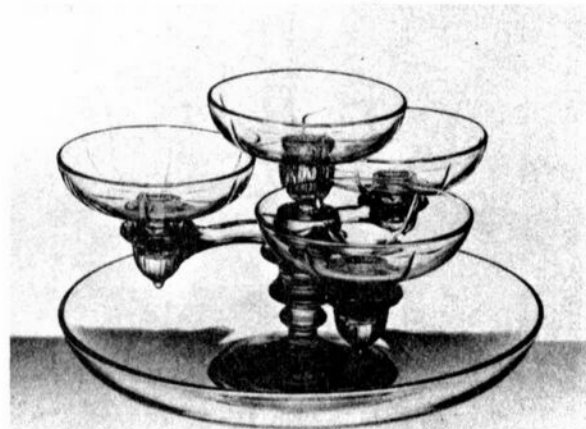
No. 5



No. 6



No. 7



No. 8

Cambridge, Ohio - - - U. S. A.

BOOKS FOR SALE

National Cambridge Collectors, Inc. is proud to announce that you can now order all of the available reference books on Cambridge glass directly from the Club.

Ohio residents add 4½% sales tax -- and send with your order to:

BOOKS
National Cambridge Collectors, Inc.
P. O. Box #416
Cambridge, Ohio 43725

1930-1934 CAMBRIDGE GLASS CO.
CATALOG REPRINT
by National Cambridge Collectors
(250 page reprint of
original catalog)
Hardbound with Price Guide - \$14.95

THE CAMBRIDGE GLASS BOOK
by Harold and Judy Bennett
(96 pages with 59 color plates)
----- \$ 9.95

1975 PRICE GUIDE TO
THE CAMBRIDGE GLASS BOOK
by Charles and Mary Alice Upton
(Prices for each item in
Bennett Book) - - - - \$ 1.75

CAMBRIDGE GLASS COMPANY
by Mary, Lyle and Lynn Welker
(120 pages of reprints from
eight old catalogs) - - \$ 6.95

CAMBRIDGE GLASS CO. BOOK II
by Mary, Lyle and Lynn Welker
(119 pages of reprints from
old catalogs) - - - - \$ 6.95

CAMBRIDGE, OHIO GLASS IN COLOR II
by Mary, Lyle and Lynn Welker
(15 color plates with descriptions
and notes) - - - - - \$ 5.95

1903 CAMBRIDGE GLASS COMPANY
CATALOG REPRINT
by Harold and Judy Bennett
(106 page reprint of
original catalog) - - - \$ 7.50

— Classified —

FOR SALE: CAMBRIDGE GLASS. Send for listing of etched items. SASE appreciated. Also substantial inventory of NEAR-CUT & CAMBRIDGE GENERAL LINE. Inquiries invited. THE GLASS CUPBOARD, 39 Shire Oaks Drive, Pittsford, New York 14534 Phone 716-586-7596. Mail, Phone or by Appointment.

WANTED: CAMBRIDGE CLEO etched pieces in green. Interested in any and all pieces. Martha Cook, Box 205, Kewanna, Indiana 46939.

WANTED: CAMBRIDGE ROCK CRYSTAL. Croesus pattern #722, 10oz., ftd., tumbler #3500. Mrs. E. W. Yockey, 234 S. Fountain, Wichita, Kansas 67218.

FIND a good selection of CAMBRIDGE GLASS among the many thousands of pieces of 20's and 30's colored glassware advertised each month in the DEPRESSION GLASS DAZE. Many top notch, nationally prominent dealers advertise with us each month! SPECIAL OFFER TO READERS OF THE CRYSTAL BALL!! Subscribe NOW for 12 months at \$5.50 and receive 15 issues! Write: DAZE, Box 57CCB, Otisville, Mich. 48463. Cash with orders, we cannot bill but we do accept BAC & MC.

Rainbow Review GLASS journal

"KEEPING GLASS COLLECTORS INFORMED"

RAINBOW REVIEW GLASS JOURNAL
— ESTABLISHED 1971 —

64 pages each month, printed magazine style on glossy paper. News - ads - shows - clubs - interviews - questions & answers - lots of informative articles by respected columnists on ALL types of glass (old and new!) — keep up on what's happening in the world of glass!

\$6 - one year \$11 - two years \$15 - three years
or \$2 for a three month "trial subscription"
BONUS — a "free" 40-word ad w/subs.!

Enclose payment, write name, address, state and zip code on reverse and mail to: RAINBOW REVIEW, P.O. Box 2315, Costa Mesa, CA 92626 (allow 30 days) Note: Foreign subscribers add \$2 per year.

DEALERS



DIRECTORY

<p>ANTIQUE ALLEY 24815 Broadway Bedford, Ohio 44146 216-232-7739 ---- Marie Spagnola CAMBRIDGE GLASS ROYAL DOULTON</p>	<p>BENICIA ANTIQUE SHOP 305 First Street Benicia, California 94510 OPEN 11 AM - 5 PM Closed Monday</p>	<p>BARBARA COOPER'S DEPRESSION SHOP 97 Weaver Street Montgomery, N. Y. 12549 CAMBRIDGE, HEISEY, DUNCAN MILLER and DEPRESSION ---- 914-457-3659</p>
<p>D & D ANTIQUES 184 East Kossuth Street Columbus, Ohio 43206 DICK SLIFKO ----- 614-443-6020</p>	<p>Z. E. LOPES - 707-745-0978 VISIT HISTORIC BENICIA and its 28 shops Off Interstate #80 ----- ---- North of San Francisco</p>	<p>FINDER'S KEEPER'S ANTIQUES P.O. Box 303 P.O. Box 16023 Dayton, O. Columbus, O. 45401 43216 513-254-2937 614-965-1906 SPECIALIZING IN CAMBRIDGE GLASS!</p>
<p>D'MARIE'S ANTIQUES Rt. #1, c/o Eastern Antique Mart Thornburg, Virginia 22565 703-582-5755 ----- Jim Rankin OPEN DAILY - EXCEPT MONDAY</p>	<p>THE DARROW COLLECTION Highway 1A and Jungle Hut Road Flagler Beach, Florida 32036 Phone 904-445-3805 Mail Address: Rt. #1, Box 167 St. Augustine, Florida 32084</p>	<p>GEORGE HOFFMAN ANTIQUES 129 South 4th Street Newark, Ohio 43055 --- 614-345-8550 ---</p>
<p>MARY & WILBUR HENDERSON 303 Guilford Avenue Woodsfield, Ohio 43793 SHOWS Only -- 614-472-1133 SPECIALIZING IN CAMBRIDGE GLASS!</p>	<p>HERITAGE ANTIQUES Rt. #5, Cambridge, Ohio - 43725 614-439-3241 TAKE N.8th St.Rd.(County Rd.#33) TURN LEFT AT RAILROAD TRACK.</p>	<p>'OUR GLASS ANTIQUES 20th CENTURY COLLECTIBLES featuring CAMBRIDGE GLASS Paul & Ginny Henderson - Box 134 Iselin, NJ 08830 -- 201-283-3181</p>
<p>HOBBY HOUSE ANTIQUES Rt. #1, Cambridge, Ohio - 43725 614-432-6971 - Frank & Lena TAKE RT.#209 W.FROM CAMBRIDGE TO RT. #658 - NORTH 1 1/2 MILES.</p>	<p>YOU CAN ADVERTISE YOUR ANTIQUA SHOP HERE! 1 inch - \$6 for six months</p>	<p>MARGARET LANE ANTIQUES 2 E. Main Street New Concord, Ohio 43762 Lynn Welker ----- 614-826-4418 CAMBRIDGE GLASS MATCHING SERVICE</p>
<p>S & J ANTIQUES 5616 Hensel Woods Road Gahanna, Ohio 43230 Sue & Jack Rettig - 614-855-1711 CAMBRIDGE GLASS OUR SPECIALITY</p>	<p>A. SPRINGBORN P. O. Box E. G. #962 Melbourne, Florida - 32935 Shop #34, Webster, Florida OPEN EVERY MONDAY 305-254-7439</p>	<p>OLD TOLL GATE ANTIQUES Rt. #5, Box 7X Milan, Illinois 61264 SPECIALIZING IN HAVILAND CHINA</p>
<p>WOLFES GLASS EMPORIUM 330 Woodlawn Avenue Cambridge, Ohio 43725 John Wolfe ----- 614-432-2590 WED. & FRI. 1-5PM or APPOINTMENT</p>	<p>National Cambridge Collectors, Inc. P. O. Box #416 Cambridge, Ohio 43725</p>	
<p>PRESIDENTIAL COIN & ANTIQUE CO 6222 Little River Turnpike Alexandria, Virginia - 22312 Gail B. Levine ---- 703-354-5454 WANT LISTS SOLICITED-OPEN 6 DAYS</p>		
<p>YOU CAN ADVERTISE YOUR ANTIQUA SHOP HERE! 1 inch - \$6 for six months</p>		
<p>HOFF - HAVEN ANTIQUES 21 Half Moon Lane Tarrytown, New York 10591 Shows-Mail-No Lists-914-631-2140 CAMBRIDGE, Rose In Snow Fostoria</p>		

FIRST CLASS MAIL

Auction

National Cambridge Collectors, Inc.

P. O. Box 416, Cambridge, Ohio 43725

CONDITION OF SALE

TIME: August 6, 1977 Preview-9:30 A. M. Auction-11:00 A. M.

LOCATION: Howard Johnson's Motor Lodge
Intersection of Rt. 161 & Interstate 71 North
Columbus, Ohio

TERMS: Cash or check with proper identification day of sale. All sales are subject to Ohio Sales tax. 4½% sales tax will be charged. Dealers may sign an exemption form if the items purchased are for resale in which case, no tax will be charged.

All glass guaranteed to be Cambridge. The auction committee has attempted to check all glass to be auctioned. All pieces should be examined immediately and returned before five pieces are sold if the article is not perfect or as represented. There will be a few pieces sold with minor damage. These pieces are indicated in the catalog.

MAIL BIDS: Mail bids will be accepted. All bids must be accompanied by a check for the full amount bid. Bids will be executed secretly, and the bidder will pay only the final price not the full amount of the mail bid. Please include a stamped, self-addressed envelope with each bid. You will be notified if you were the successful bidder. If not, your check will be returned and the final selling price noted. Ohio residents please include 4½% sales tax or your Vendor's Number. If you wish to have the piece(s) shipped to you, please include adequate shipping and insurance. All packages will be shipped the week immediately following the auction. If you do not wish to have the piece(s) shipped, please indicate where and when you will pick up the piece(s). All mail bids should be addressed to: National Cambridge Collectors, Inc.
P. O. Box 416
Cambridge, Ohio 43725

To be eligible, bids must be received on or before August 3, 1977. Adequate paper and boxes will be provided at the Auction. Please bring this catalog with you to the auction.

Auctioneer: Craig Connely, Granville, Ohio

MOTEL RESERVATIONS: Single-\$18.00 Double-\$21.00
These reservations will help defray the cost of the use of these facilities. Phone 614-826-4418 for reservations.

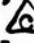

Food will be available at the auction. Please park in the rear of the facility as signs will indicate.

Preview and Quarterly Meeting Friday August 5th at 8:00 P. M.

ADDITIONAL INFORMATION: Please phone 614-826-4418

- _____ 1. 3400 Line 80 oz. ball jug water pitcher, Amethyst with Crystal handle
- _____ 2. Caprice 4-ftd. rosebowl 7½" dia., Crystal Alpine
- _____ 3. September Morn 6½" flower figure frog, Crystal
- _____ 4. 3400 Line bitters bottle, Farber Bros. holder, Royal Blue
- _____ 5. Mt. Vernon stemmed ivy bowl, orig. sticker, Milkglass
- _____ 6. 1066 sherbet, Amethyst with Crystal stem & foot (4)
- _____ 7. Swan 5½" early style, Peachblo
- _____ 8. Globe vase, 4¾", experimental Ivory?
- _____ 9. Mt. Vernon 11½" flared floral bowl, Royal Blue
- _____ 10. 1066-3 oz. cocktail, Carmen with Crystal stem & foot
- _____ 11. Caprice 2½" triangle ashtray, Moonlight Blue (4)
- _____ 12. Seashell 7½" Nude Lady comport, signed Δ , Crown Tuscan
- _____ 13. Cambridge Square goblets, Crystal (10)
- _____ 14. Cambridge Square low sherbets, Crystal (7)
- _____ 15. 3400 Line 11" floral bowl, 4-ftd., etched Gloria, signed Δ , Willow Blue
- _____ 16. Cordial in Farber Bros stem & foot, Amethyst (2)
- _____ 17. Georgian tumbler 9 oz., Moonlight Blue (12)
- _____ 18. 3400 Line 80 oz. ball jug water pitcher, Amethyst with Crystal handle
- _____ 19. Feather 5½" trumpet vase, unsigned Nearcut, Crystal
- _____ 20. Optic, ring stem belled vase, 10", Amber with Crystal stem & foot
- _____ 21. Talisman Rose champagne, silk screen & gold decor
- _____ 22. 3400 Line Ball jug water pitcher, Gyro Optic 80 oz., Pistachio green with Crystal handle & 4 matching Pistachio green 13 oz. barrel tumblers
- _____ 23. Simplicity goblet 12 oz., Carmen with Crystal stem & foot
- _____ 24. Twist 8½" candlestick (1 only), Jade
- _____ 25. 3121 optic 12 oz. ftd. tumbler, Crystal (3)
- _____ 26. Apple Blossom etch Decagon 3 lite candlesticks, Crystal
- _____ 27. Blue Cloud footed tumbler, orig. sticker, Crystal
- _____ 28. Blue Cloud low sherbet, Crystal
- _____ 29. 3400 Line 8½" luncheon plate, Moonlight Blue Δ (12)
- _____ 30. Community oval covered soap dish, minor inside roughness, Primrose (rare)
- _____ 31. Georgian sherbet, Forest Green
- _____ 32. Tally-Ho 10 oz. tumbler, Carmen
- _____ 33. 3400 Line 80 oz. Doulton water pitcher, Royal Blue with Crystal handle
- _____ 34. Plain Ware 2 lb. candy jar (base only), gold encrusted border trim, Heliotrope
- _____ 35. Mt. Vernon wine decanter, orig. stopper, & 6-3 oz. footed tumblers, Crystal
- _____ 36. Pristine medium size sugar & creamer, Crystal
- _____ 37. Plain Ware 9½" dia. compote, Ivory
- _____ 38. Sea Gull flower frog, orig. sticker, Crystal
- _____ 39. Arcadia 10 oz. goblets, Crystal (6)
- _____ 40. Caprice 13 oz. ball top tumbler, Crystal Alpine
- _____ 41. Ranch Tumbler, Gyro Optic, Sunset (Rare)
- _____ 42. September Morn 11" flower figure frog, Emerald Green (light)
- _____ 43. Apple Blossom etch 3400 Line 80 oz. ball jug water pitcher, optic, Crystal
- _____ 44. Rosepoint etch 2 lite ring stem candlestick, Crystal

- _____ 45. Star candlestick, 3 $\frac{1}{2}$ " , Moonlight Blue
 _____ 46. Seashell oval 4-ftd. bowl, Crown Tuscan
 _____ 47. Ram's Head bowl, stress lines underneath, Jade
 _____ 48. Feather whiskey glass, Nearcut unsigned, Crystal
 _____ 49. Feather cruet, bottom of stopper rough, signed
 Nearcut, crystal
 _____ 50. Feather cracker jar, signed Nearcut, Crystal
 _____ 51. Apple Blossom etch 3l30-3 oz. cocktails, Crystal (2)
 _____ 52. Rose Bowl No. 1309-5", Crown Tuscan
 _____ 53. Portia etch 3l2l parfait, Crystal (2)
 _____ 53a. Caprice large sugar & creamer, Crystal
 _____ 54. 2 lite ring stem candlestick (1 only), Windsor Blue
 _____ 55. Nude Stem 3011-8" cupped comport, Amber
 _____ 56. 3l22-3 oz. cocktail, Carmen with Crystal stem & foot (2)
 _____ 57. 3l2l short sherbets, optic, Crystal (5)
 _____ 58. 1066-3 oz. cocktails, Moonlight Blue (9)
 _____ 59. 1066-4 $\frac{1}{2}$ oz. claret, Moonlight Blue
 _____ 60. Mt. Vernon 6 $\frac{1}{2}$ oz. tall sherbet, Crystal
 _____ 61. Mt. Vernon 4 $\frac{1}{2}$ oz. low sherbet, Crystal (2)
 _____ 62. Mt. Vernon 2 handled sauceboat, Crystal
 _____ 63. Nude stem 3011 table goblet, Carmen
 _____ 64. Basketweave vase, urn style, Rubina
 _____ 65. 7966 low goblet, Rondo rock crystal cut, Crystal (4)
 _____ 66. Same as above, low sherbet (4)
 _____ 67. Wildflower etch 11" belled optic vase, Amber (rare)
 _____ 68. Swan, 8 $\frac{1}{2}$ " last style, minor roughness on one fin,
 Crystal
 _____ 69. Martha Washington low, handled sugar bowl, Forest Green
 _____ 70. 3500 Line 8" 2 handled & ftd. plate, Forest Green
 _____ 71. Decagon 11" 2 handled fruit bowl, 731 etch, Peachblo
 _____ 72. Elaine etch & gold encrusted Pristine 12" flower
 center, ruffled edge & pair of 2 lite ring stem
 candlesticks with matching decor
 _____ 73. Bridge tumbler, Crystal with Carmen heart foot
 _____ 74. Bridge tumbler, Crystal with Carmen diamond foot
 _____ 75. Plain Ware 12" stick vase, Primrose
 _____ 76. Guernsey Semi-Colonial low sherbet, signed Nearcut (8)
 _____ 77. Wide Optic 10" floral bowl, Rubina
 _____ 78. Seashell (Nautilus) 8" flower center, orig. sticker,
 Crown Tuscan
 _____ 79. Plain Ware stem sugar & creamer, grey cut floral
 decor, Eleanor Blue
 _____ 80. Tally-Ho 2 $\frac{1}{2}$ oz. handled mug, Royal Blue
 _____ 81. Same, Carmen
 _____ 82. Gyro Optic 8" flat rosebowl, Crystal
 _____ 83. Everglades (leaves) 11" ftd. vase, Forest Green
 _____ 84. 3l20-12 oz. ftd. tumbler, etch 739 (Adams), Gold
 Krystol with Crystal stem& foot
 _____ 85. 3l22 tall stem champagne/sherbet, Heatherbloom with
 Crystal stem & foot
 _____ 86. Caprice 12" sandwich or serving tray, 4 ftd.,
 Moonlight Blue
 _____ 87. Caprice 12" oval floral bowl, 4 ftd., Moonlight Blue
 _____ 88. Elaine etch 3500-10 oz. ftd. tumbler, Crystal (2)
 _____ 89. 3300 tall stem sherbet/champagne, signed \triangle , Peachblo (2)
 _____ 90. Same, 5 oz. low ftd. juice (2)
 _____ 91. Ram's Head 12" fruit bowl, 3500 Line, Crystal
 _____ 92. Controlled Bubble paperweight, orig. sticker, Man-
 darin Gold

- 93. Fernland 9" ruffled bowl, unsigned Nearcut, Crystal
- 94. Tally-Ho 12 oz. mug, Carmen
- 95. Old English rock crystal cut cordial
- 96. Georgian tumbler, 2½ oz., Gold Krystol (refer to NCC Reprint - pg. 44) (7)
- 97. Nude stem 3011 table goblet, Forest Green
- 98. Nude stem 3011 cordial, Forest Green
- 99. Caprice 300 Line tall stem water goblets, La Rosa pink with Crystal stem & foot (7)
- 100. 3400 Line ball jug sugar & creamer in Farber Bros holders, Forest Green
- 101. Fernland 8" quart jug, unsigned Nearcut, Crystal
- 102. #518 Figure Flower frog, 8½", Dianthus Pink
- 103. Arcadia 2 lite candlesticks, Crystal
- 104. Arcadia 9" flower bowl, 4 fld., Crystal
- 105. Arcadia large sugar & creamer, Crystal
- 106. Swan, 3½" (#2 style), signed , Emerald Green (light)
- 107. Yardley jar with glass lid, flesh colored
- 108. Cornucopia vase, 11", gold trim worn, Crown Tuscan
- 109. 3900-2 lite candlesticks, rock crystal cut Achilles, Crystal
- 110. Cut Wild Rose celery, cut trim, minor nick on one foot, Crystal
- 111. 955-62 oz. low water jug, etch 704, Dianthus Pink
- 112. Everglades 2 lite candlestick (1 only), repair on one candlecup, Amber
- 113. Martha blank low creamer, Chantilly etch, Crystal
- 114. 3750 low sherbet, rock crystal cut Montrose, orig. sticker on 5 (6)
- 115. Mt. Vernon low candlestick, 1 only, Crystal
- 116. Chantilly etch handled salt & pepper, 1 slightly stained, Crystal
- 117. Rosepoint 3500 Line 3 division relish, applied handle
- 118. Decanter, minor roughness on edge, orig. Crystal stopper, Farber Bros. filigree holder, Amethyst
- 119. Guernsey Semi-Colonial 11" celery, unsigned Nearcut
- 120. Ring stem 10" belled vase, minor roughness on rim, Forest Green with Crystal stem & foot
- 121. Seashell 8" oval bowl, worn enamel decor, Crown Tuscan
- 122. 2 lite ring stem base candelabra, arm, & 2 ruffled vases, Crystal
- 123. Decagon crackle 8½" plate, Peachblo
- 124. 2 lite ring stem candlesticks, Crown Tuscan
- 125. Arcadia 2 handled 3 compt, relish, Crystal
- 126. 3400 Line Globe vase 6", gold encrusted Portia, acid signature, Crown Tuscan (rare)
- 127. Mt. Vernon tall sherbet, Violet (rare)
- 128. 3400 Line ball jug decanter, Amber with Crystal handle and stopper
- 129. Swan, 10" early style, signed , Crystal
- 130. Sweet pea vase, 8", rubina
- 131. Plain Ware stemmed sugar & creamer, Pomona Green (rare)
- 132. Pristine mayonnaise bowl, Crystal
- 133. 3400 Line 80 oz. ball jug water pitcher, Amber
- 134. #518 Flower figure frog, 8½", Crystal
- 135. 1441-2 lite large candelabra, with bobeches and prisms
- 136. Weatherford center handled serving tray, cut trim, Amber
- 137. Wheat Sheaf 7" milk pitcher, signed Nearcut, crystal

- _____ 138. 3400 Line 48 oz. ball jug, scratched, Amethyst with Crystal handle
- _____ 139. Mt. Vernon 14 oz. tumbler, Milk Glass
- _____ 140. Mt. Vernon 5 oz. juice tumbler, orig. sticker, Milk Glass
- _____ 141. Caprice #12-3 oz. ftd. tumbler, Moonlight Blue
- _____ 142. Nude stem 3011 cocktail 3 oz., Crown Tuscan with Gold Krystol bowl
- _____ 143. Seashell creamer, Milk Glass
- _____ 144. Feather wine decanter, no stopper, unsigned Nearcut
- _____ 145. Stratford 2 handled urn salt, signed Δ , Crystal
- _____ 146. Martha Washington 7"-4 section relish, Crystal
- _____ 147. Pristine 8"-3 division relish, Chantilly etch, Crystal
- _____ 148. Everglades (leaves) 5" vase, Royal Blue satin finish
- _____ 149. Tally-Ho low footed sugar & creamer, Carmen
- _____ 150. Monkey Lamp, Brown enamel over Ivory with Ebony base, very rare, only a few examples known
- _____ 151. Pristine 12" floral bowl and single lite candlesticks unknown gold encrusted border trim worn, Crystal
- _____ 152. 3111 Line 12 oz. ftd. tumblers, Amethyst with Crystal stem & foot
- _____ 153. Laurel Wreath border plate 8 $\frac{1}{2}$ " (Matches Ram's Head bowl), gold trim worn, Ivory
- _____ 154. Tally-Ho 16 piece luncheon set (5 place settings of cup, saucer, & plate plus round serving plate), Emerald Green (dark)
- _____ 155. Plain Ware 2 lb., floral grey cut covered candy jar, Bluebell
- _____ 156. Caprice #70 tall candlesticks, no prisms, Moonlight Blue
- _____ 157. Wildflower etch 3121-12 oz. ftd. tumbler, Crystal
- _____ 158. 3400 Line Globe vase 5", gold encrusted Rosepoint, hole drilled in side at bottom, Crown Tuscan
- _____ 159. Everglades 5" vase (Japanese mums), orig. sticker, Milk Glass
- _____ 160. Seashell 6" comport, signed Δ , Windsor Blue
- _____ 161. 3400 Line 4 ftd. mayonnaise bowl, ladle, & plate, Forest Green
- _____ 162. Block Optic 10" floral bowl, signed Δ , Eleanor Blue
- _____ 163. Oval covered candy box 7", Dianthus Pink with Emerald Green (light) rose knob
- _____ 164. 3400 Line 12" ftd. floral bowl, Crown Tuscan
- _____ 165. 3725 goblet, rock crystal cut Laurel Wreath, Crystal
- _____ 166. Decagon 12" floral bowl, #704 etch, Willow Blue
- _____ 167. 3400 Line 11" sandwich plate, Dianthus Pink
- _____ 168. Rosepoint etch 3500 Line individual sugar, Crystal
- _____ 169. Plain Ware 12" service plates, willow etching and gold trim, Amber (rare) (2)
- _____ 170. Mt. Vernon covered candy jar, Mandarin Gold
- _____ 171. Everglades 12" floral bowl (leaves), Moonlight Blue
- _____ 172. #1305 10 $\frac{1}{2}$ " ring stem urn vase, Crown Tuscan
- _____ 173. Dolphin ftd. cigarette set, 4 piece, chip on one ashtray, Ebony with crystal lid liner
- _____ 174. 3400 Line condiment set (2 cruets, salt & pepper) in Farber Bros. holders, Amethyst
- _____ 175. Plain Ware 8" luncheon plate, unknown etch, Amber
- _____ 176. Pristine candle block (1 only), Crystal
- _____ 177. Nude stem 3011 champagne, optic bowl, signed Rockwell sterling decoration on bowl & foot, satin stem (rare)
- _____ 178. Everglades 14" shallow, cupped bowl (tulips) Crystal
- _____ 179. 3500 Line individual sugar & creamer, Royal Blue
- _____ 180. Mt. Vernon ivy bowl, chip on base, Amber

- 181. #518 figure flower frog, 8½", Crystal
- 182. Top Hat novelty, pale Amber
- 183. Flower Block, 2¾", signed Cambridge in full, Crystal
- 184. Seashell 8½" ftd. belled vases, crystal (2)
- 185. Seashell cov'd candy, enamel & gold floral, Crown Tuscan
- 186. Mt. Vernon 12"-5 section relish, Royal Blue
- 187. Optic bowl goblets, gold trim, 1 chipped (4)
- 188. Plain Ware 10" relish, gold floral trim, D. Pink, signed \triangle
- 189. Marjorie creamer, signed Nearcut, Crystal
- 190. Cambridge Square individual sugar, Crystal
- 191. #979 sugar, etched Cleo, Emerald Green (light)
- 192. Buzz Saw quart jug 7", unsigned Nearcut, Crystal
- 193. 3400 Line 32 oz. ball jug decanter & 5-2 oz whiskey tumblers, Amethyst with crystal stopper
- 194. Yardley jar, flesh colored
- 195. Candlesticks, 10" platinum decorated, large underbase chip, Heliotrope
- 196. 9" Trumpet vase similar to Stratford, Emerald Gr. (light)
- 197. Bobeche #19-1, no prisms, Crystal
- 198. Mayonnaise liner, unknown gold etching 8", Amber
- 199. #3 Bird novelty, Crystal
- 200. Everglades 12" oval floral bowl & single lite candlesticks #63, Crystal
- 201. Lemon extractor, Pat'd. January 6, 1909, Crystal
- 202. Flower block 4½" (fits in Caprice rose bowl), Crystal
- 203. Plain Ware stem sugar & creamer, gold trim, Ebony
- 204. Floral bowl 13" unknown etch, signed \triangle , Peachblo
- 205. Condiment set 3400 Line (2 cruets, salt & pepper) in Farber Bros. holders, stopper missing, Forest Green
- 206. #645-3 lite candlesticks, Crown Tuscan
- 207. 3400 Line 4 ftd. crimped floral bowl, Crown Tuscan
- 208. 3400 Line water jug, handleless, chrome base, Amber
- 209. Caprice #1358 candelabra, arm, & 2 vases, no bobeches or prisms, Crystal
- 210. 3400 Line 5½" bon bon, engraved, crystal
- 211. Cleo etch 8½" decagon plates, Emerald Green (light) (6)
- 212. Caprice single candlestick (1 only), Crystal
- 213. Mt. Vernon ftd. trumpet vase 10", Royal Blue
- 214. #2557 plain dipper, wooden handle
- 215. Buzz Saw 4 oz. cologne, stopper missing minor roughness
- 216. Mt. Vernon 40 oz. wine decanter, orig. stopper, Carmen
- 217. Nude stem 3011 sauterne, Royal Blue (rare)
- 218. Cheese & cracker base, unknown gold etch, 12", Amethyst
- 219. 6" ashtray, highly polished, minor nick, Crystal
- 220. Covered candy, 3 division, enamel & gold floral, C. Tuscan
- 221. Wildflower etch 3500 Line individual sugar, Crystal
- 222. Cleo etch 11" Decagon sandwich tray, gold trim, Willow Blue
- 223. 3400 Line 4 ftd. mayo, . liner, & ladle, Dianthus Pink
- 224. Candlelight etch candelabra, arm, & 2 vases, Crystal
- 225. Cleo etch 9 oz. goblet, Peachblo (4)
- 226. Same, 10 oz. tumbler, one has minor chip, Peachblo (4)
- 227. Cleo etch #979 sugar & creamer, Peachblo
- 228. Cleo etch Decagon cup & saucer, Peachblo (4)
- 229. Cleo etch Decagon 6½" bread & butter plate, Peachblo (4)
- 230. Cleo etch Decagon 8½" luncheon plate, Peachblo (4)
- 231. Cleo etch Decagon 12" floral bowl, Peachblo
- 232. Nearcut unsigned 10" plate, internal fracture, Crystal
- 233. Chrome hammered ice bucket handle