

# Cambridge



# Crystal Ball

ISSUE NO. 55

NOVEMBER 1977

Published monthly by the National Cambridge Collectors, Inc.  
To encourage and to report the discovery of the elegant and boundless product  
of the Cambridge Glass Company, Cambridge, Ohio

Thoughts from the President - - - -

With all of the color that we are now seeing around us in the landscape, we are reminded of the less desirable season that will be following shortly. Winter with all of its elements that will so effectively slow our collecting efforts.

There is always one bright spot to offset this season, however. That is Christmas, and the joy that comes from the giving and receiving of gifts.

When we give serious consideration to this annual occasion, we find that the National Cambridge Collectors has quite a range of items that could be used to good advantage as gifts.

Foremost among these would be a gift membership. This would be a year long gift that would be new and different each month and also renewable each year. An ideal way to share your interests with others.

For those seeking more information about Cambridge glass, we can suggest and supply any of the current books devoted to this subject. One of these could be a valued

addition to the library of someone on your gift list. Possibly even a little gift to you, from you.

Available as of this month, the beautiful Ladylegs Bookend figure commemorative could be the start of something beautiful in the giving of gifts. These figures are truly a work of art, and one that any glass lover would cherish. Later additions to this series could supply your future needs. The quantity of this item will be very low, so get your order in soon.

There is still available a small quantity of the second addition N. C. C. Collectors Plates. A beautiful antique blue Caprice plate with the emblem of the organization pressed into the center.

Any or all of the above constitute potential gifts for the collectors that could be given with pride. All have been advertised in this or in an earlier issue of the Crystal Ball.

In addition to the potentials of solving a few of your problems, the giving of these gifts would benefit our museum fund efforts and put us a little bit closer to the "Year of the Museum".

In the meantime, HAPPY THANKSGIVING.

*Bill*

#### MEMBERSHIP RENEWAL NOTICE

If the date on your address label is - - 11 - 77  
This is your **LAST** ISSUE of the  
**CRYSTAL BALL**. Please renew NOW!

# CAMBRIDGE CRYSTAL BALL

Official publication of National Cambridge Collectors, Inc., a non-profit corporation with tax exempt status. Published once a month for the benefit of its members. Membership is available for individual members at \$10 per year and additional members (12 years of age and residing in the same household) at \$3 ea. All members have voting rights, but only one CRYSTAL BALL will be mailed per household.

Back issues of the CRYSTAL BALL are available to members only, at a cost of 60¢ ea. or 12 issues for \$7.

## 1977-78 Officers & Committee Chairpersons

PRESIDENT ----- William C. Smith  
VICE-PRESIDENT ----- David B. Rankin  
SECRETARY ----- Janice Y. Hughes  
TREASURER ----- Doris J. Isaacs  
SERGEANT-AT-ARMS ----- David B. Rankin  
BUDGET & FINANCE ----- William C. Smith  
BY-LAWS ----- David B. Rankin  
CONVENTION -----  
MEMBERSHIP ----- Josephine A. Barstow  
MUSEUM ----- Arnold Lynd  
PROGRAM & ENTERTAINMENT - Charles A. Upton  
PROJECT ----- David G. McFadden  
PUBLICITY ----- John F. Rettig  
STUDY GROUP ADVISORY ---- Janice Y. Hughes

1978 ANTIQUE SHOW ----- Gerald R. Landman  
1978 CAMBRIDGE AUCTION -----

CRYSTAL BALL Editor ----- Phyllis D. Smith

## CLASSIFIED ADVERTISING RATES

5¢ per word \$1.00 minimum

We cannot mix type size in classified advertisements. Abbreviations and initials will count as words. Payment in full must accompany all ads.

## DISPLAY ADVERTISING RATES

	Members	Non-Members
1/8 page -----	\$ 4.00	\$ 6.00
1/4 page -----	7.00	10.00
1/2 page -----	12.00	18.00
3/4 page -----	17.00	25.00
Full page -----	22.00	33.00

## DEALERS DIRECTORY

1" ad ----- \$6.00 for 6 months

Cambridge CRYSTAL BALL assumes no responsibility for items advertised and will not be responsible for error in price, description or other information.

Advertising copy must be in our hands by the 15th of each month to assure publication in our next issue. Advertisements containing reproductions will not knowingly be accepted unless clearly stated.

PLEASE ADDRESS ALL CORRESPONDENCE TO

Cambridge CRYSTAL BALL  
National Cambridge Collectors, Inc.  
P. O. Box #416  
Cambridge, Ohio 43725

PLEASE NOTIFY US IMMEDIATELY OF ANY CHANGE  
IN YOUR ADDRESS!

Please enclose a self-addressed, stamped envelope when requesting information!!

# STUDY Club News

## CAMBRIDGE SQUARES

The Cambridge Squares Study Club met on September 23rd, in the home of Janice and Larry Hughes, with 13 members and one guest present.

Several new stems had been purchased for our Museum project. They included a #3500 stem with amber bowl, a #3122 goblet in royal blue, a #3121 goblet with Rose Point etching (purchased and donated by Jean Carter), and a pink Caprice goblet.

A new Tip Board was started, with the prize being a #3500 stemmed 1 oz. cordial etched Diane.

Lynn Welker presented an informative program on Cambridge animals. A few interesting points to keep in mind when buying a Cambridge animal (not a reproduction) are as follows: the eyes of the old Cambridge Bridge Hounds were straight across. The only Cambridge color not reproduced in these dogs was Mocha (light amber). The squirrel and frog were only made in their natural colors by Cambridge. The squirrel in amber and the frog in light emerald green - both were also made in crystal. Under black light the crystal Cambridge pieces will turn yellow, and the new reproductions will look milky white. The Cambridge butterflies all have rounded wings. Butterflies made by other companies have pointed wings.

The "Show & Tell" table held such items as a royal blue Ram's Head bowl, an amethyst Caprice vase, a moonlight blue Georgian basket, a blue crackle 13 oz. tumbler, a pink whiskey etched #733, several tiny moonlight blue Caprice nut

----- continued on page 7

# Museum Donation

by Doris Isaacs

(photo by Kit Rettig)

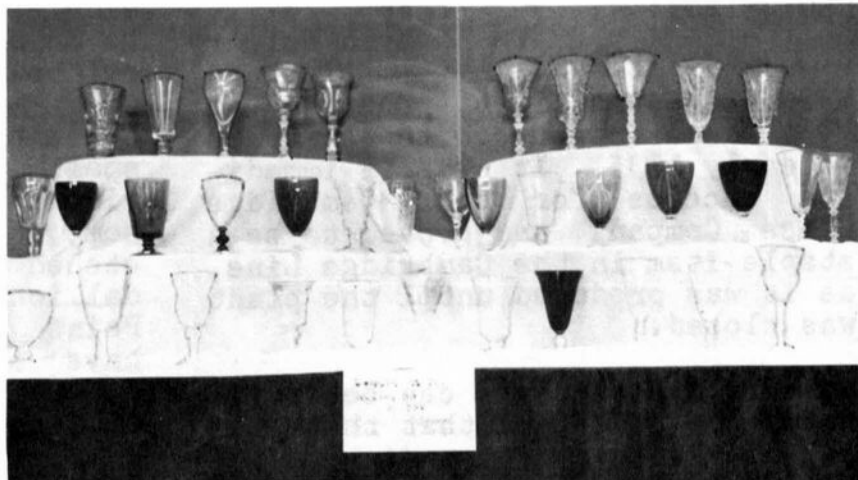
One of the displays at the 1977 Convention consisted of a rather large group of Cambridge glass stemware, which was presented to the Club for the Museum at the Saturday morning breakfast. This outstanding display was a gift from the Cambridge Squares study club.

In October, 1976, the Cambridge Squares decided it was time to do something tangible for the Museum. They decided to start buying Cambridge glass goblets. Goblets were chosen since there are so many etchings, cuttings and patterns that would show up well on them.

John Wolfe and Doris Isaacs were authorized to buy goblets with a budget of \$25, which was to be replenished as it was used. Since the meeting that evening was held in the home of Frank and Lena Barnes, John was able to find the first goblet that very evening.

Money was raised to support this project from the sale of Bumper Stickers, monthly dues, and the use of Tip Boards. At present the fourth Tip Board is in progress with the prize being a #3122 stem cordial etched Diane. The other prizes have been two Blue Willow etched plates and a covered urn, etched Minerva. These prizes have all been furnished at nominal fees by members of the study club.

Three of the stems on display at the Convention had been donated to the museum prior to the start of the project by members of the Cambridge Squares. These consisted of an Arcadia goblet, a #3121 blank goblet, and a goblet bearing the "Ye Olde Ivy" etching.



GOBLETs DONATED TO NCC BY CAMBRIDGE SQUARES!

Some of the purchases have been made from members and local dealers, and range in price from \$2 to \$30. Some of these prices are below cost and the Study Club is very appreciative of all the help given in this way. Goblets have also been purchased through the mail, on vacations, at shows, flea markets and auctions.

The cash outlay has been in the neighborhood of \$350, and at this time, includes a Portia etched Heatherbloom goblet as the most expensive and the Hunt Scene etching on a pink goblet with green stem, is next in line.

The number has grown from 36 at Convention time, to 47 at the present time, not counting two donations that are being held for verification.

Most of these goblets have been purchased by Janice Hughes and Doris Isaacs. Sometime you may see them at a Show accompanied by other Study Club members, picking out goblets. If they seem to be trying to get there first, PLEASE EXCUSE THEIR DUST!!! It's all for the Museum!

# Rose Point

ITS  
BEGINNINGS!



by  
Lynn Welker

Rose Point was first produced in 1934 and introduced to the trade in early 1935. It was an immediate success for the Cambridge Glass Company, and proved to be a staple item in the Cambridge Line, as it was produced until the plant was closed.

Some of its success can be attributed to the fact that there was matching silverware made by the Wallace Silver Company, and matching china made by the Pope-Gosser China Company.

Elaborate displays of these coordinating items in many of America's leading department and jewelry stores helped the sale of Rose Point Crystal. The Cambridge Glass Company augmented these displays with a deluge of very effective advertising on the Rose Point Line.

Rose Point was also popular because of the large number of serving and accessory pieces available. Building a large set of matching crystal was stressed by those in the trade, and the size of the Rose Point Line aided crystal collectors in building a thoroughly complimented set of crystal.

The greatest part of the success of Rose Point must be accounted for by its beauty. The delicate floral vines surrounding an elaborate medallion were copied from a French lace, long popular to brides in America. Thus, it had an added selling point to girls about to be married in the 30's and 40's, when this lacy design was so popular. This may explain why so much of the Rose Point found today was originally Wedding crystal.

The design itself will vary from piece to piece, mainly in the size of the etching. The etching will be much smaller on items such as a wine glass, than the etching will be on a large item, such as a floral bowl.

A limited number of items with small surfaces, such as an individual ashtray, or the bottom of some covered pieces, will have the etched vine only, and lack the medallion generally found on Rose Point pieces. Some pieces may have only three medallions while others will have four or five medallions.

There will be other variations in the etching as seen on the #3400 Line cups. These have only the top part of the medallion ending in the raised corner which extends from the bottom of the cup.

Stemware was among the first items to be introduced with the Rose Point etching. The #3500 Line (Gadroon) was the 1st stem line introduced in Rose Point. It was used throughout the entire production of Rose Point by Cambridge.



9 oz. Goblet  
Tall Bowl

3106

The #3106 stem line was introduced into the Rose Point line shortly after the #3500 Line. The #3106 stem line in Rose Point was short lived, however, and was discontinued before 1940.

The #3121 Line stemware was the last to be introduced sometime in the late 30's. It proved

----- continued on page 7



# The Cambridge Glass Company



3500  
Patent No. 89769



1—Goblet, Long Bowl



2—Goblet, Short Bowl



7 oz. Tall Sherbet



7 oz. Low Sherbet



5 oz. Cafe Parfait



3 oz. Cocktail



2½ oz. Wine



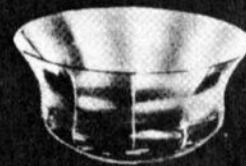
4½ oz. Claret



4½ oz. Oyster Cocktail



1 oz. Cordial



Fingerbowl



13 oz. Ftd. Tumbler



12 oz. Ftd. Tumbler, Tall



10 oz. Ftd. Tumbler



5 oz. Ftd. Tumbler



2½ oz. Ftd. Tumbler

Cambridge, Ohio - - - U. S. A.



# The Cambridge Glass Company



3121



10 oz. Goblet



6 oz. Tall Sherbet



Low Sherbet



3 oz. Cocktail



3 1/2 oz. Wine



4 1/2 oz. Oyster Cocktail



4 1/2 oz. Claret



1 oz. Cordial



1 oz. Brandy



12 oz. Ftd. Tumbler



10 oz. Ftd. Tumbler



5 oz. Ftd. Tumbler



Fingerbowl  
Fingerbowl Plate



2 1/2 oz. Ftd. Tumbler

Cambridge, Ohio - - - U. S. A.

# Rose Point

continued from page 4

to be the most popular of the three stem lines that were available in the Rose Point pattern.

The #3121 Line is the easiest of the Rose Point stem lines to be found and the #3106 Line is the hardest. However, the demand for the #3121 and #3500 Lines is much greater as the stem lines are more elaborate than the plain design of the #3106 stem. Also, the possibility of building a set of #3106 stemware in Rose Point is not at all likely and would be extremely difficult.

The #3500 Line stemware in Rose Point consisted of fifteen different stems (see page 5).

The 7 oz. tall sherbet is commonly referred to as a champagne and the 13, 12 and 10 oz. ftd. tumblers are often called iced teas. In the #3500 Line Rose Point stemware the hardest items to find are the short bowl goblet, the cafe parfait, the claret, the wine, and the 13, 12 and 2½ oz. ftd. tumblers. The most desirable pieces, valuewise, are the cordials and the cafe parfaits.

It is not known just exactly what pieces were made in the #3106 Rose Point stemware line. However, the author has seen the 9 oz. tall water goblet (pictured on page 4), the 7 oz. tall sherbet, the 7 oz. short sherbet, and the 3 oz. cocktail. Other pieces in Rose Point in the stem line are very possible as there were seventeen different blank bowls available on the #3106 stem.

The #3121 Line stemware in Rose Point was available in fourteen different stems. Thirteen of them are shown on page 6, and the fourteenth one is a 5 oz. cafe that is not pictured.

The 6 oz. tall sherbet is often called a champagne, and the 12 and 10 oz. ftd. tumblers are called iced teas in this line also. The hardest stems to find in the #3121 Rose Point Line are the wine, the claret, the 2½ oz. ftd. tumbler, and the cafe parfait. Valuewise, the most desirable pieces are the cordial, the brandy, and the cafe parfait.

(This is the beginning of a series of articles on Rose Point. Please write us about any unusual finds in Rose Point so they may be included in these articles.)

---

## CAMBRIDGE SQUARES

continued from page 2

dishes with handles, a #3400 Demi-tasse cup and saucer with unknown cutting, and an unusual light emerald green narrow optic footed vase with handles.

Next meeting will be held on October 20th, in the home of Charles & Marybelle Moorehead, Cambridge, Ohio. Topic for discussion will be Cambridge baskets.

Submitted by Doris Isaacs

---

## HOKEY-POKEYS

The September meeting of the Hokey Pokey Study Club was cancelled. Their next meeting is scheduled for October 21st, in the home of Bill and Phyllis Smith, Springfield, Ohio.

---

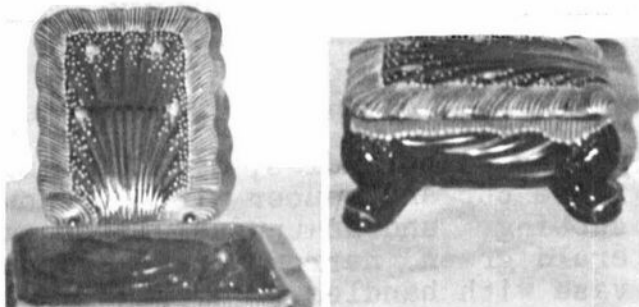
We all find excuses instead of time for the things we don't want to do.

Unknown

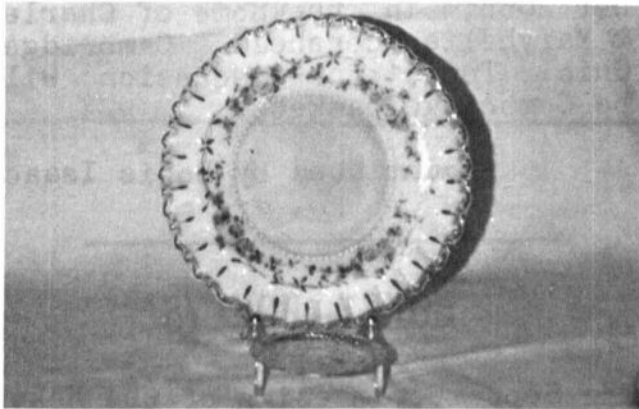
# we get letters

## MORE ON CHARLETON!

I'm so glad the discussion on "Charleton" came up. I have two pieces with their label on it. I'm sending pictures of them hoping to add a little information. These were bought at a dispersal sale of a Florist and Gift Shop. They were selling all the "junk" off their back shelves and moving into a new modern complex. The cigarette box has a yellowed sticker on it with price \$6.95. I don't know who made the plate, do you?



CHARLETON DESIGN #664



WHO MADE THIS PLATE?

The cigarette box is emerald green decorated by Charleton with #664 on the label. Dolphins mouth, side stripes and bottom stripes on top are gold. The rest is white except for pink roses with green leaves. The plate is milk glass with crystal edge, decorated by Charleton with #4914 on the label.

Lola Sealy, Georgia

Thank you for sending the back issues of the CRYSTAL BALL. We are reading and enjoying every informative issue.

We wish to express to all the members of National Cambridge Collectors our thanks for being welcomed so warmly at the Auction in Columbus in August.

We had a pleasant trip, enjoyed the enthusiasm of the group (it's contagious), felt immediately a part of the group, and left learning from the open sharing of the members.

An organization such as this, could not continue without so much dedication and effort by so many. We wish to thank everyone.

Don & Shirley Ladouceur  
New York

---

I thoroughly enjoyed your features on the Caprice pattern. I was able to identify many pieces by number that I had not been able to find before. There are a few numbers missing and I have a few pieces that don't fit any of those described. Thank you so much for this information.

Betty Chamnes, Illinois

---

As a Cambridge collector and member of the Society, I am always interested in reading about good buys people make.

This summer we spent our vacation in London, England. Of course we visited all the antique shops and flea markets we could. One Saturday morning at Portobello Road - London's largest flea market - to our surprise we found a Cambridge two-kid figure in frosted peachblossom for £10 - or \$17.50. We are quite thrilled to add this "buy" to our collection of Cambridge flower frogs.

Elaine & Murray Schneider  
New York



# M & M Antiques and Collectibles

310 N. Main, P. O. Box 417, Canton, Kansas 67428

Phone: 316-628-4705

# 1 - Buffalo and Indian Everglade bowl (#28), 16", pearl mist green ---	\$165.00
2 - #3400/45, 12" Bowl, crown tuscan w/gold silk screen and gold crown tuscan mark -----	79.00
3 - Seashell dish, 4 ftd., 8" x 4-1/3" x 3", crown tuscan, marked $\triangle$ --	60.00
4 - Ivy Ball, rib optic w/ring stem, 8 1/2", crown tuscan -----	50.00
5 - Nautilus shell flower holder, 7 1/2", crown tuscan w/hand painted roses and artist initials -----	110.00
6 - Seashell cigarette box, crown tuscan w/hand painted roses on lid -	65.00
7 - #3011, 5 1/2", Nude stem ashtray, crown tuscan -----	85.00
8 - #1238, 12" Vase, crown tuscan w/hand painted roses -----	110.00
9 - #16, 7" Comport, crown tuscan w/sterling overlay signed Rockwell and $\triangle$ -----	135.00
10 - 8 1/2" Swan, ebony, marked $\triangle$ - has very small flake on each foot ----	65.00
11 - #3400/647, two-lite Candleholders, crystal, pair -----	30.00
12 - Nude stem Comport, Farber stripped to brass w/amber insert -----	50.00
13 - Nude stem Comport, Farber w/amethyst insert -----	35.00
14 - #3500/27 Rams Head bowl, dianthus pink -----	147.50
15 - NearCut, Colonial pattern custard cups (4) set -----	36.00
16 - Console bowl, heliotrope, rolled edge has gold encrusted Laurel Wreath -----	45.00
17 - #3011, 5 1/2", Nude stem, crystal w/royal blue ashtray top -----	85.00
18 - #3011, 6 1/2", Nude stem, crystal w/royal blue flat comport -----	85.00
19 - #3011, 6 1/2", Nude stem, crown tuscan, seashell plate comport -----	85.00
20 - #3011, Nude stem, 3 oz. wine w/moonlight blue bowl -----	60.00
21 - #3011, Nude stem, 3 oz. wine w/dianthus pink bowl -----	60.00
22 - #3011, Nude stem, 3 oz. wine w/amethyst bowl (8) each -----	42.50
23 - #3011, Nude stem, 3 oz. wine w/forest green bowl (9) each -----	42.50
24 - #3011, Nude stem, 3 oz. wine w/amber bowl (4) each -----	42.50
25 - #3011, Nude stem, 3 oz. wine w/gold krystal bowl (3) each -----	55.00
26 - #842, 12" bowl, Eleanor blue -----	37.50
27 - French Cameo Vase, 4" tall, signed A. Delatte -----	225.00
28 - Pink slag punch cup in Inverted Fan and Feather, lovely -----	350.00

**SATISFACTION GUARANTEED -- POSTAGE AND INSURANCE EXTRA!!!**

We have many other pieces in Cambridge, Caprice, Apple Blossom, Portia, etc. Also have nice selection of old pattern glass.

**NEED FOR RESALE: Cambridge Daffodil, NearCut Daisy, Animals, Crystal Bells.**

# BOOKS FOR SALE

National Cambridge Collectors, Inc. is proud to announce that you can now order all of the available reference books on Cambridge glass directly from the Club.

Ohio residents add 4½% sales tax -- and send with your order to:

BOOKS  
National Cambridge Collectors, Inc.  
P. O. Box #416  
Cambridge, Ohio 43725

\*\*\*\*\*

1930-1934 CAMBRIDGE GLASS CO.  
CATALOG REPRINT  
by National Cambridge Collectors  
(250 page reprint of  
original catalog)  
Hardbound with Price Guide - \$14.95

\*\*\*\*\*

THE CAMBRIDGE GLASS BOOK  
by Harold and Judy Bennett  
(96 pages with 59 color plates)  
----- \$ 9.95

\*\*\*\*\*

1975 PRICE GUIDE TO  
THE CAMBRIDGE GLASS BOOK  
by Charles and Mary Alice Upton  
(Prices for each item in  
Bennett Book) - - - - \$ 1.75

\*\*\*\*\*

CAMBRIDGE GLASS COMPANY  
by Mary, Lyle and Lynn Welker  
(120 pages of reprints from  
eight old catalogs) - - \$ 6.95

\*\*\*\*\*

CAMBRIDGE GLASS CO. BOOK II  
by Mary, Lyle and Lynn Welker  
(119 pages of reprints from  
old catalogs) - - - - - \$ 6.95

\*\*\*\*\*

CAMBRIDGE, OHIO GLASS IN COLOR II  
by Mary, Lyle and Lynn Welker  
(15 color plates with descriptions  
and notes) - - - - - \$ 5.95

\*\*\*\*\*

1903 CAMBRIDGE GLASS COMPANY  
CATALOG REPRINT  
by Harold and Judy Bennett  
(106 page reprint of  
original catalog) - - - \$ 7.50

## QUARTERLY MEETING

Our November 12th Quarterly Meeting will be very special this year. It will be our first Figural Commemorative Dinner Meeting. (Complete information has been mailed to every member under separate cover.)

This meeting will be held in the dining room of Bakers Restaurant and Motel, located on Route #40. (Take Exit #164 (Norwich) from I-70, go East less than one mile.)

Social Hour 6 PM ---- Dinner 7 PM.

The deadline for dinner reservations has passed, but any member is welcome to attend the Business portion of the meeting beginning at approximately 8 PM. An excellent program on "Cambridge Stems" has been planned by your Program and Entertainment Committee.

## — Classified —

WANTED TO BUY: CAMBRIDGE ROUND dinnerware, amber. 9 - 8½" flat soups, 11 - 9¼", 10" dinners. Gerald Gould, 121 Ketchams Road, Syosset, N. Y. 11791.

WANTED TO BUY: CAMBRIDGE "MINUET" goblets. Mrs. George Gee, 2803 W. 66th Terrace, Shawnee Mission, Kansas 66208.

WANTED TO BUY: CAMBRIDGE "RONDO". Stems and serving pieces at resale prices. Jamens Collectibles, 2982 Cheryl Road, Merrick, N. Y. 11566.



Have a HAPPY THANKSGIVING!

Please travel safely!

# DEALERS



# DIRECTORY

<p><b>ANTIQUÉ ALLEY</b> 24815 Broadway Bedford, Ohio 44146 216-232-7739 ---- Marie Spagnola CAMBRIDGE GLASS ROYAL DOULTON</p>	<p><b>BENICIA ANTIQUE SHOP</b> 305 First Street Benicia, California 94510 OPEN 11 AM - 5 PM Closed Monday</p>	<p><b>BUSY BEE ANTIQUES</b> 1044 Dublin Road Columbus, Ohio 43215 Robert Cain 614-486-8320 CAMBRIDGE ---- BROWSER'S WELCOME</p>
<p><b>CHURCH STREET ANTIQUES</b> 6 Church Street Boston, Massachusetts 02116 George or Frank --- 617-426-1048 CAMBRIDGE, HEISEY, GENERAL LINE</p>	<p><b>Z. E. LOPES - 707-745-0978</b> VISIT HISTORIC BENICIA and its 28 shops Off Interstate #80 ----- ----- North of San Francisco</p>	<p><b>D &amp; D ANTIQUES</b> 184 East Kossuth Street Columbus, Ohio 43206  DICK SLIFKO ----- 614-443-6020</p>
<p><b>THE DARROW COLLECTION</b> Highway 1A and Jungle Hut Road Flagler Beach, Florida 32036 Phone 904-445-3805 Mail Address: Rt. #1, Box 167 St. Augustine, Florida 32084</p>	<p><b>D'MARIE'S ANTIQUES</b> Rt. #1, c/o Eastern Antique Mart Thornburg, Virginia 22565 703-582-5755 ----- Jim Rankin OPEN DAILY - EXCEPT MONDAY</p>	<p><b>FINDER'S KEEPER'S ANTIQUES</b> P.O. Box 303 P.O. Box 16023 Dayton, O. Columbus, O. 45401 43216 513-254-2937 614-965-1906 SPECIALIZING IN CAMBRIDGE GLASS!</p>
<p><b>MARY &amp; WILBUR HENDERSON</b> 303 Guilford Avenue Woodsfield, Ohio 43793  Shows Only -- 614-472-1133 SPECIALIZING IN CAMBRIDGE GLASS!</p>	<p><b>HERITAGE ANTIQUES</b> Rt. #5, Cambridge, Ohio - 43725 614-439-3241  Take N.8th St.Rd.(County Rd.#33) TURN LEFT AT RAILROAD TRACK</p>	<p><b>HOBBY HOUSE ANTIQUES</b> Rt. #1, Cambridge, Ohio - 43725 614-432-6971 - Frank &amp; Lena  Take Rt.#209 W.From Cambridge To RT. #658 - NORTH 1½ MILES</p>
<p><b>HOFF - HAVEN ANTIQUES</b> 21 Half Moon Lane Tarrytown, New York 10591  Shows-Mail-No Lists-914-631-2140 CAMBRIDGE, ROSE IN SNOW FOSTORIA</p>	<p><b>GEORGE HOFFMAN ANTIQUES</b> 129 South 4th Street Newark, Ohio 43055  --- 614-345-8550 ---</p>	<p><b>MARGARET LANE ANTIQUES</b> 2 E. Main Street New Concord, Ohio 43762  Lynn Welker ----- 614-826-4418 CAMBRIDGE GLASS MATCHING SERVICE</p>
<p><b>'OUR GLASS ANTIQUES</b> 20th CENTURY COLLECTIBLES featuring CAMBRIDGE GLASS  Paul &amp; Ginny Henderson - Box 134 Iselin, NJ 08830 -- 201-283-3181</p>	<p><b>OLD TOLL GATE ANTIQUES</b> Route #5, Box 7X Milan, Illinois 61264  SPECIALIZING IN HAVILAND CHINA MATCHING SERVICE</p>	<p><b>PRESIDENTIAL COIN &amp; ANTIQUE CO</b> 6222 Little River Turnpike Alexandria, Virginia - 22312  Gail B. Levine ---- 703-354-5454 WANT LISTS SOLICITED-OPEN 6 DAYS</p>
<p><b>S &amp; J ANTIQUES</b> 5616 Hensel Woods Road Gahanna, Ohio 43230  Sue &amp; Jack Rettig - 614-855-1711 CAMBRIDGE GLASS OUR SPECIALITY</p>	<p>Use Schlegers book numbers or send saucer for pattern match. SASE APPRECIATED  Marie Baker ----- 309-787-2392 GENERAL LINE OF ANTIQUES</p>	<p><b>PUMPHOUSE ANTIQUES</b> 111 E. Main St., Box 433 West Branch, Iowa 52358 Closed Monday - Sept. thru May 319-643-2879 - or - 319-337-5096 OUR SPECIALTY GLASS EARLY &amp; LATE</p>
<p><b>A. SPRINGBORN</b> P. O. Box E. G. #962 Melbourne, Florida - 32935  Shop #34, Webster, Florida OPEN EVERY MONDAY 305-254-7439</p>	<p><b>THE GLASS CUPBOARD</b> 39 Shire Oaks Drive Pittsford, New York 14534  Marcia Ellis 716-586-7596 CAMBRIDGE ONLY --- SASE FOR LIST</p>	<p><b>M &amp; M ANTIQUES &amp; COLLECTIBLES</b> 310 N. Main -- Box 417 Canton, Kansas 67428  The Martin's ----- 316-628-4705 SPECIALIZING IN CAMBRIDGE GLASS!</p>
<p><b>WOLFE'S GLASS EMPORIUM</b> 330 Woodlawn Avenue Cambridge, Ohio 43725  John Wolfe ----- 614-432-2590 WED. &amp; FRI. 1-5PM or APPOINTMENT</p>	<p><b>THIS 'N' THAT PLACE</b> 101 South Street Chagrin Falls, Ohio -- 44022  Lue Koerper ----- 216-247-4938 OPEN THURS.-SAT.---10 AM - 5 PM</p>	<p><b>YOU CAN ADVERTISE YOUR ANTIQUÉ SHOP HERE!</b>  1 inch - \$6 for six months</p>

# National Cambridge Collectors, Inc.

P. O. Box 416,

CAMBRIDGE, OHIO

43725



*A nonprofit organization dedicated to the preservation and study of Cambridge Glass*

You Are Cordially Invited  
To Become A Member Of The  
NATIONAL CAMBRIDGE COLLECTORS, INC.

Benefits derived from membership include: receipt of our club publication, The Cambridge CRYSTAL BALL; informative Quarterly Meetings; Antique Shows; Auctions; and other special events.

The Cambridge CRYSTAL BALL is published the first of each month. This newsletter contains educational and interesting articles, questions and answers, information on reproductions and reissues, notices of all club functions, classified advertisements, dealers directory and many other features of interest to collectors of Cambridge glass.

Yearly dues are \$10.00 for Individual Members and \$3.00 for each Associate Member. All members have voting rights, but only one issue of the CRYSTAL BALL will be mailed per household.

Name (please print) \_\_\_\_\_ \$ 10.00

Mailing Address \_\_\_\_\_

City \_\_\_\_\_ State \_\_\_\_\_ Zip \_\_\_\_\_

Associate Members: (Must be at least 12 years of age and living in the same household.)

1. Name \_\_\_\_\_

2. Name \_\_\_\_\_

3. Name \_\_\_\_\_

\_\_\_\_\_ Associate Members @ \$ 3.00 each \$ \_\_\_\_\_

Please make check payable to: National Cambridge Collectors, Inc.

TOTAL AMOUNT ENCLOSED: \$ \_\_\_\_\_

Recommended by \_\_\_\_\_

NATIONAL CAMBRIDGE COLLECTORS, INC.  
P. O. Box #416  
Cambridge, Ohio 43725

FIRST CLASS MAIL