

Cambridge



Crystal Ball

ISSUE NO. 59

MARCH 1978

Published monthly by the National Cambridge Collectors, Inc.
To encourage and to report the discovery of the elegant and boundless product
of the Cambridge Glass Company, Cambridge, Ohio

Thoughts from the President - - - -

When we look at the calendar we can see that it is only a few more days until Spring. A look at the thermometers here in this area prompts one to question whether the calendar can possibly be correct.

Based upon the history of many past seasons, we will accept the fact that at least sometime in the near future we will see a change in our weather conditions, and that we will once again be able to get out to the shows, flea markets, shops, and garage sales in our search for Cambridge. At this point it certainly makes for pleasant speculation. It is winters such as these last two that cause us to envy those of you that can partake of the outdoor types of activities all year long.

The ability to get out again will provide us with the opportunity to more actively broadcast the merits of Cambridge and to promote the benefits of association with NCC.

As we discuss the beauty of a piece of Cambridge with our friends and acquaintances it takes very little effort to make them aware of the existence of our organization and to express to them the virtues of membership.

Generally the person that expresses interest in Cambridge glass also expresses a desire

to become better informed about Cambridge. It is at this point that you really have the opportunity to do your bit. An explanation of the fact that we are an organization that is dedicated to the advancement of the knowledge of Cambridge glass will usually result in an additional member. You may, in a case of real reluctance, have to use some added persuasions such as showing them a copy of the Crystal Ball, or even going to the very extreme of offering to fill out the membership application that you find on the back of this Crystal Ball for them. Some of our members have even been known to go one more step and mail in the application for the new member. Our motto should be, "Get them while the getting is good". You will receive their thanks for it later.

Some of the foregoing may sound a bit frivolous, but it is a proven fact that it brings results. Some of our members have been able to bring in many additional new members by using such tactics. It is these membership gains that accelerate our ability to achieve our goals. If you desire more membership applications just let us know and we will provide them "post haste".

The new catalog reprint has been promised "no later than Convention", probably sooner. It is subject to energy shortage delays and a heavy schedule at the bindery. Information on the price will be provided A.S.A.P.

The Museum Committee indicates that this may become "The Year of the Museum".

Bill

MEMBERSHIP RENEWAL NOTICE

If the date on your address label is - - **3-78**
This is your **LAST ISSUE** of the
Crystal Ball. Please renew **NOW!**

CAMBRIDGE CRYSTAL BALL

Official publication of National Cambridge Collectors, Inc., a non-profit corporation with tax exempt status. Published once a month for the benefit of its members. Membership is available for individual members at \$10 per year and additional members (12 years of age and residing in the same household) at \$3 ea. All members have voting rights, but only one CRYSTAL BALL will be mailed per household.

Back issues of the CRYSTAL BALL are available to members only, at a cost of 60¢ ea. or 12 issues for \$7.

1977-78 Officers & Committee Chairpersons

PRESIDENT ----- William C. Smith
 VICE-PRESIDENT ----- David B. Rankin
 SECRETARY ----- Janice Y. Hughes
 TREASURER ----- Doris J. Isaacs
 SERGEANT-AT-ARMS ----- David B. Rankin
 BUDGET & FINANCE ----- William C. Smith
 BY-LAWS ----- David B. Rankin
 CONVENTION -----
 MEMBERSHIP ----- Josephine A. Barstow
 MUSEUM ----- Arnold Lynd
 PROGRAM & ENTERTAINMENT - Charles A. Upton
 PROJECT ----- David G. McFadden
 PUBLICITY ----- John F. Rettig
 STUDY GROUP ADVISORY ----- Janice Y. Hughes

1978 ANTIQUE SHOW ----- Gerald R. Landman

CRYSTAL BALL Editor ----- Phyllis D. Smith

CLASSIFIED ADVERTISING RATES

5¢ per word \$1.00 minimum

We cannot mix type size in classified advertisements. Abbreviations and initials will count as words. Payment in full must accompany all ads.

DISPLAY ADVERTISING RATES

	Members	Non-Members
1/8 page -----	\$ 4.00	\$ 6.00
1/4 page -----	7.00	10.00
1/2 page -----	12.00	18.00
3/4 page -----	17.00	25.00
Full page -----	22.00	33.00

DEALERS DIRECTORY

1" ad ----- \$6.00 for 6 months

Cambridge CRYSTAL BALL assumes no responsibility for items advertised and will not be responsible for error in price, description or other information.

Advertising copy must be in our hands by the 15th of each month to assure publication in our next issue. Advertisements containing reproductions will not knowingly be accepted unless clearly stated.

PLEASE ADDRESS ALL CORRESPONDENCE TO

Cambridge CRYSTAL BALL
 National Cambridge Collectors, Inc.
 P. O. Box #416
 Cambridge, Ohio 43725

PLEASE NOTIFY US IMMEDIATELY OF ANY CHANGE IN YOUR ADDRESS!

Please enclose a self-addressed, stamped envelope when requesting information!!

BOOKS FOR SALE

National Cambridge Collectors, Inc. is proud to announce that you can now order all of the available reference books on Cambridge glass directly from the Club.

Ohio residents add 4½% sales tax -- and send with your order to:

BOOKS
 National Cambridge Collectors, Inc.
 P. O. Box #416
 Cambridge, Ohio 43725

1930-1934 CAMBRIDGE GLASS CO.
 CATALOG REPRINT
 by National Cambridge Collectors
 (250 page reprint of
 original catalog)
 Hardbound with Price Guide - \$14.95

THE CAMBRIDGE GLASS BOOK
 by Harold and Judy Bennett
 (96 pages with 59 color plates)
 - - - - - \$ 9.95

1975 PRICE GUIDE TO
 THE CAMBRIDGE GLASS BOOK
 by Charles and Mary Alice Upton
 (Prices for each item in
 Bennett Book) - - - \$ 1.75

CAMBRIDGE GLASS COMPANY
 by Mary, Lyle and Lynn Welker
 (120 pages of reprints from
 eight old catalogs) - - \$ 6.95

CAMBRIDGE GLASS CO. BOOK II
 by Mary, Lyle and Lynn Welker
 (119 pages of reprints from
 old catalogs) - - - - \$ 6.95

CAMBRIDGE, OHIO GLASS IN COLOR II
 by Mary, Lyle and Lynn Welker
 (15 color plates with descriptions
 and notes) - - - - - \$ 5.95

1903 CAMBRIDGE GLASS COMPANY
 CATALOG REPRINT
 by Harold and Judy Bennett
 (106 page reprint of
 original catalog) - - - \$ 7.50

Cambridge "Near-Cut" Carnival

by Russell Vogelsong

Near-Cut Carnival is one type of carnival glass that has been avidly sought by carnival collectors for many years, but is rarely attributed to the correct maker, The Cambridge Glass Company.

Some carnival experts have credited it to Millersburg, and some to Imperial, yet all agree it is of the highest quality.

Without a doubt the most famous piece of carnival made at Cambridge was the Buzz-Saw cruet made in marigold and green carnival. Most of these cruets were marked Near-Cut on the inside, directly below the bottom of the handle. Most of the experts still list the cruet as maker unknown. This piece demands and brings \$250.00 to \$300.00 at auctions and sales.

Another beautiful piece made by Cambridge was the #2651 Near-Cut covered cracker jar, given the pattern name of Inverted Feather. These are known to exist in marigold, green and purple carnival.

Water sets in Inverted Strawberry and Inverted Thistle may be found in green purple or marigold, but the set is usually \$350.00 to \$550.00

Some pieces of Near-Cut carnival will be found lightly iridized and other pieces will have extremely heavy iridizing applied to them.

Marion Hartung, author of several books on carnival glass, is the only author-expert to credit Cambridge with producing Near-Cut carnival.

Also popular in carnival is the Inverted Strawberry covered powder jar. I haven't seen one marked Near-Cut but it is not an impossibility. Can you imagine a person collecting Near-Cut carnival for years and suddenly finding out he or she is a full fledged Cambridge collector?

When examining an Inverted Thistle or Inverted Strawberry piece you will always find extremely fine detail work in the pattern, a tribute to the fine mold workmanship and high standards used in every Cambridge mold. I have yet to see a poorly pressed piece of Inverted Thistle or Inverted Strawberry carnival.

Don't be too depressed if you can't run out to your favorite antique shop and find Near-Cut carnival. I don't believe the number of existing pieces is that great.

(Reprinted from Vogelsong Newsletter, Vol. I, No. 4, October 26, 1971)

EDITOR'S NOTE: During the past year we have been fortunate enough to learn some current prices on Near-Cut carnival glass. The Inverted Thistle and Inverted Strawberry water sets are currently bringing \$3,300 for Thistle and \$1,800 for the Strawberry, both in purple. As most of us can attest, these past six years have certainly made a difference in the price of Cambridge glass, carnival and otherwise.

TALLY-HO

by Lynn Welker

This month, we will examine another Cambridge pressed pattern, Tally-Ho.

Introduced in 1932 and designated #1402 by the factory, the Tally-Ho Line included a large and complete line of pressed tableware, as well as a complete line of both pressed (#1402), and blown (#1402/100/150/200) stemware.



The following three pages contain the entire line of Tally-Ho stemware and tumblers, with the exception of the 14 oz. barrel shaped tumbler pictured above.

The following is a list of other items produced in the Tally-Ho Line:

BAR ITEMS

ice bucket
4" coaster
50 oz. hdd., ftd. cocktail shaker
50 oz. ftd. cocktail shaker
34 oz. decanter
34 oz. hdd. decanter

BOWLS

4½" ftd. fruit saucer
6½" ftd. cereal
6½" grapefruit (flat rim)
fingerbowl
8", 9" & 10" plain bowls
7", 9", 10", 12½", 14½" & 17" pan bowls
(shallow - used to float flowers
or for arrangements)
10½" 2-hdd. bowl
10½" & 12½" flared rim bowls
11" flared bowl
12½" flat rim bowl
13" salad bowl (shallow)

10½" low ftd. bowl (stem)
8½", 10½" & 11" 3-compartment bowl
13" ftd. punch bowl

COMPORTS

4½" low ftd. comport
4½" tall comport
low ftd. mint
6" high ftd. mint
6½" tall comport
7", 8" & 9" low ftd. comport (stemmed)

DECORATIVE ITEMS

12" ftd. vase
10" top hat (for flower arrangements)
5" (square) candlesticks
6" & 6½" (round) candlesticks (with or
without bobèche and prisms)

MISCELLANEOUS

cup & saucer
sugar & creamer
salt & pepper

MUGS and PUNCH CUPS

12 oz. hdd. stein
14 oz. barrel stein (applied handle)
2½ oz. hdd. tumbler (whiskey)
6 oz. punch mug
ftd. punch cup
5 oz. punch cup (designed later & does not
have foot like other cup)

PITCHERS

74 oz. tankard jug
88 oz. jug

PLATES

finger bowl plate
6" bread & butter plate
7" tea plate
8" salad plate
9½" dinner plate
10½" service plate
7" 2-hdd. plate
11½" 2-hdd. sandwich
17½" cabaret or punch bowl tray
18" buffet plate
18" ftd. plate

continued on page 9



1402 TALLY-HO



1402/1—18 oz. Goblet



1402/2—14 oz. Goblet



1402/3—10 oz. Goblet



1402/7—6 oz. Tall Stem
Tomato or Orange Juice



1402/5—7½ oz.
Tall Sherbet



1402/10—3 oz. Cocktail



1402/11—4 oz.
Low Stem Cocktail



1402/6—6½ oz. Low Sherbet



1402/12—2½ oz. Wine



1402/13—1 oz. Cordial



1402/8—5 oz. Low Stem
Tomato or Orange Juice



1402/20 4½ oz. Sherbet



1402/4—10 oz.
Lunch Goblet



1402/9—4½ oz. Claret



1402/44—15 oz.



1402/43—10 oz.
Tall Tumbler



1402/46—10 oz.
Table Tumbler



1402/41—5 oz.
Tumbler



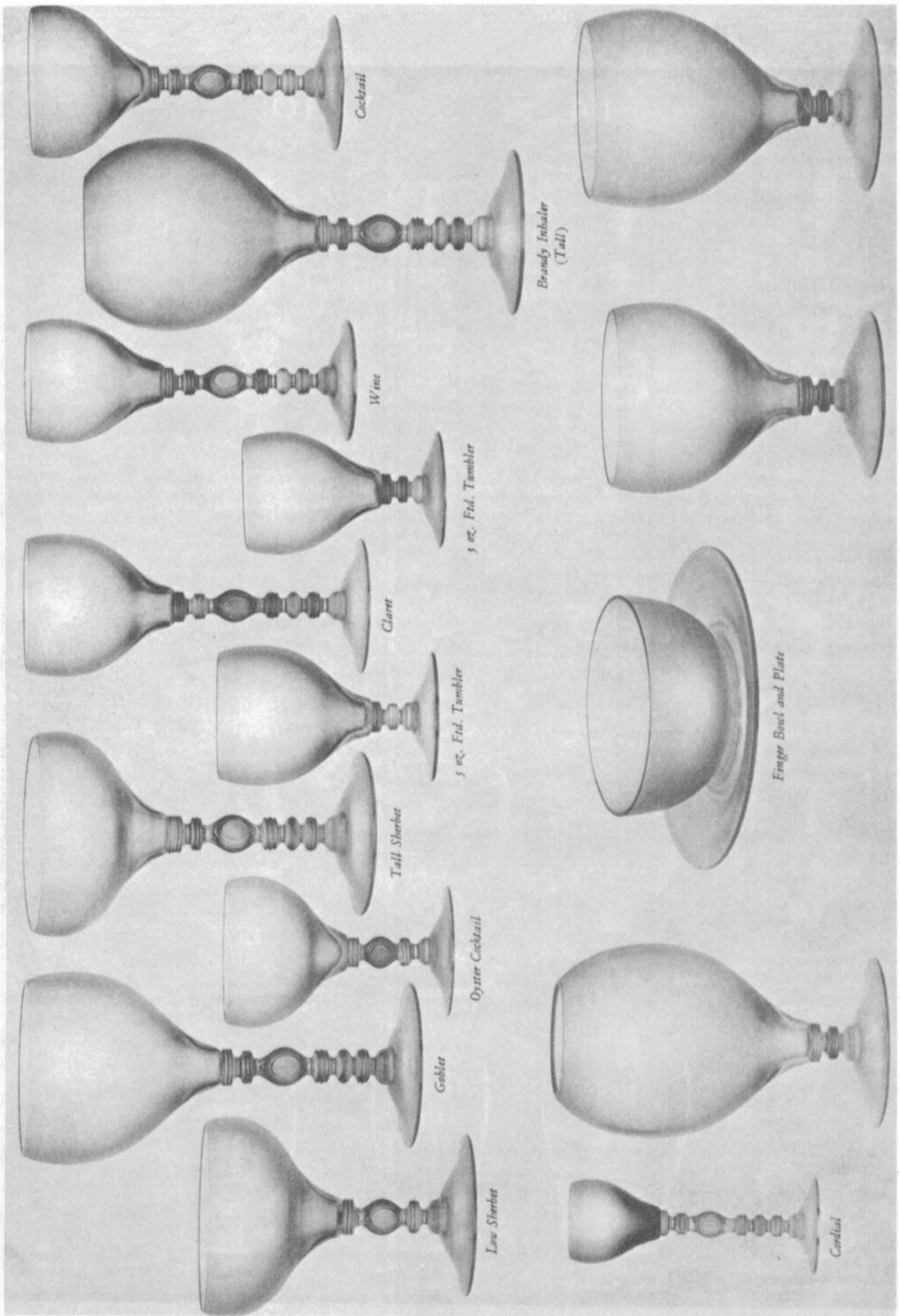
1402/42—7 oz.
O. F. Tumbler



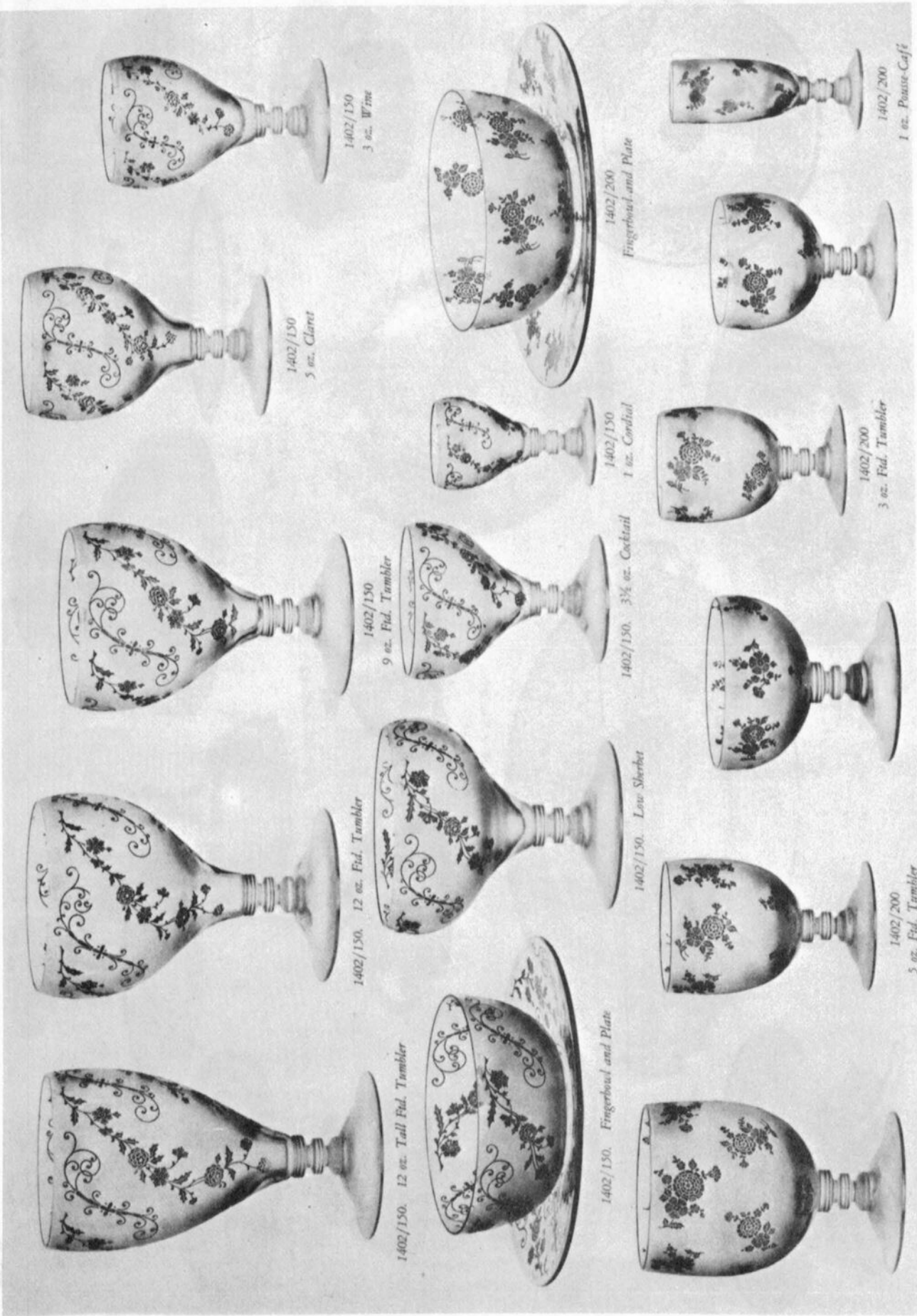
1402/40—2½ oz.
Tumbler

JANUARY 1, 1940

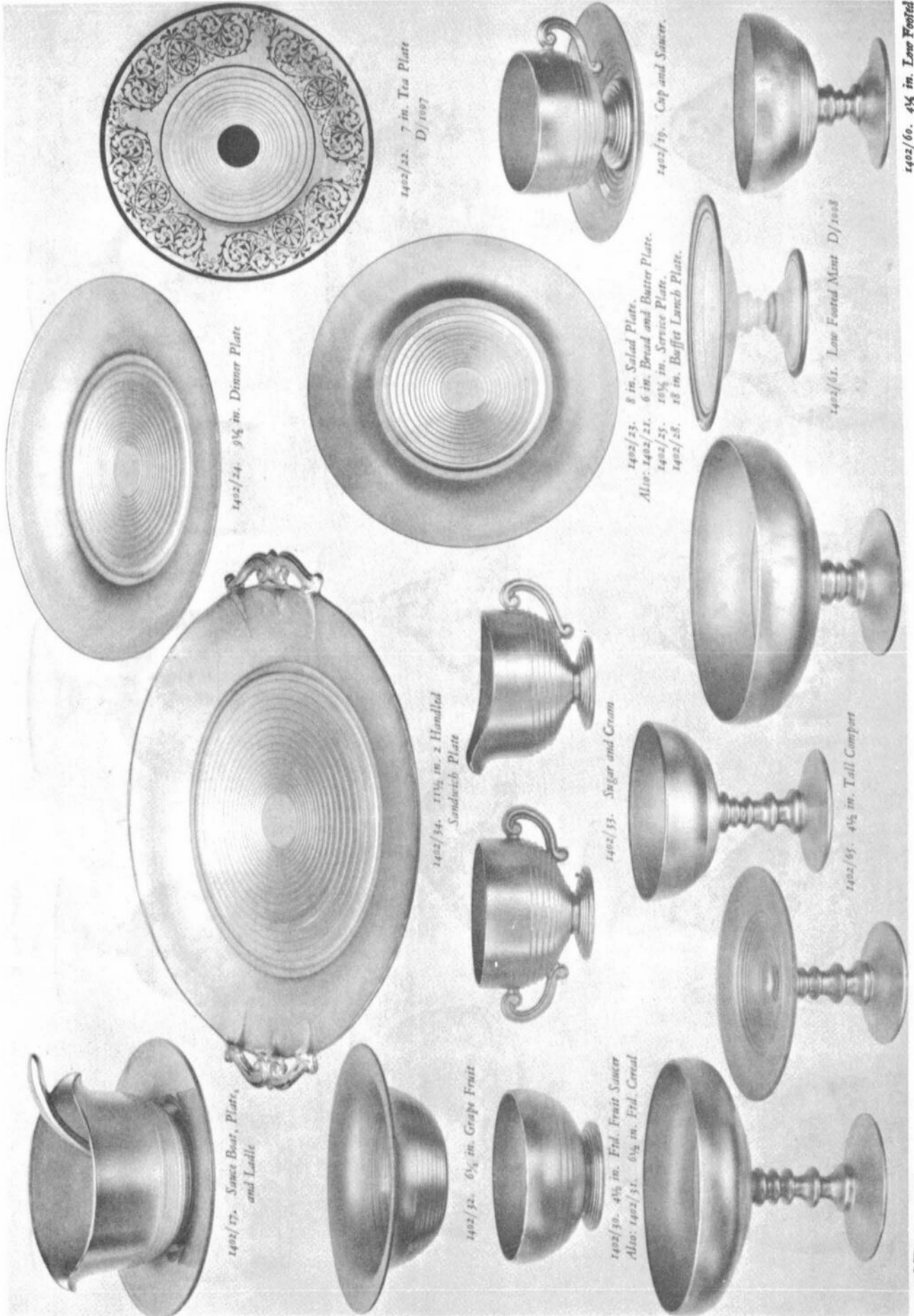
1402/100. TALLY-HO STEMWARE



1402/150. STEAMWARE PLATE ETCHED "ELAINE"
 1402/200. STEAMWARE PLATE ETCHED "766 CHINTZ"



1402. TALLY-HO LINE



1402/17. Sauce Boat, Plates, and Ladle

1402/34. 21 1/4 in. 2 Handled Sandwich Plate

1402/24. 9 1/2 in. Dinner Plate

1402/22. 7 in. Tea Plate D/1097

1402/23. 8 in. Salad Plate.
Also: 1402/21. 6 in. Bread and Butter Plate.
1402/25. 10 1/4 in. Service Plate.
1402/28. 18 in. Buffet Lunch Plate.

1402/32. 6 1/2 in. Grape Fruit

1402/35. Sugar and Cream

1402/30. 4 1/2 in. Fld. Fruit Saucer
Also: 1402/31. 6 1/2 in. Fld. Cream

1402/19. Cup and Saucer.

1402/61. Low Footed Mint D/1008

1402/62. 7 in. Low Footed Compot
Also: 1402/63. 8 in.

1402/65. 4 1/2 in. Tall Compot

1402/66. 6 in. High Footed Mint
Also: 1402/67. 6 1/2 in. Tall Compot

1402/60. 4 1/4 in. Low Footed Compot




continued from page 4

SERVING PIECES

- sauceboat with plate & ladle
- 6" & 6½" 2-hdld. nappies
- 6" 2-hdld., 2-compartment relish
- 8" 2-hdld., 3-compartment relish
- 10" 2-hdld., 4-compartment relish
- 12" celery
- 5" frappe cocktail & liner
- tall ftd. frappe cocktail & liner
- 6" & 7" ftd., iced fruit server & liner
- cookie or pretzel jar & cover (same base as the ice bucket)
- 3-pc. twin salad dressing set (2-division comport with 2 ladles)
- 4-pc. twin salad dressing set (2-division bowl, underplate & 2 ladles)
- 3 sizes cheese & cracker sets (low comport with 14", 17½" or 18" plate)
- 4-pc. salad set (3-pc. twin salad dressing set with 17½" or 18" plate)
- 3-pc. buffet sets (17½" or 18" plate with 9" low comport and sugar on top for whipped cream/mayonnaise or a 5 oz. cocktail on top for catsup/cocktail sauce)

SMOKER ITEMS

- 4" ashtray
- 4" ashtray with center handle
- 2-piece ashwell (center handled ashtray serves as cover).

Although none of the stemware was signed, many pieces of the tableware can be found signed with the , especially the cups, saucers and plates.

The Tally-Ho Line was available in crystal, carmen, royal blue, gold krystal, amber, amethyst and forest green. The pressed stemware line was available in colors, and the blown stemware lines were available in color with crystal stem and foot. The ice bucket was produced in crown tuscan, but it should be considered very rare in this color. The 50 oz. handled cocktail shaker has been seen in a blue opaque similar to Windsor Blue although there is a possibility that this piece is experimental.

Tally-Ho was available in a variety of decorations. Etchings found on Tally-Ho blanks include Catawba Grape, Elaine, #766

Chintz, Valencia, Minerva and Rose Point (only serving items were available in Rose Point, no stemware). Probably the most fitting as well as desirable etching on Tally-Ho is the Imperial Hunt Scene.

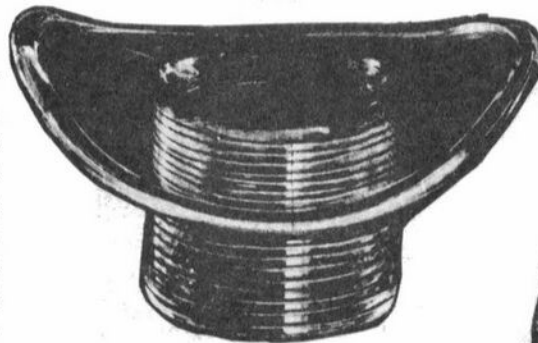
Tally-Ho was decorated with #1007 decoration (commonly called Lace design) in gold transfer on colors. Carmen, royal blue, and forest green pressed stemware have been found thus far. This decoration was also applied to crystal pieces in black enamel with an orange enamel edge trim and in orange enamel with platinum edge trim (see Tea plate on page 8).

A few Rock Crystal cuttings were done on Tally-Ho crystal, but these are unusual, as are most of the decorations mentioned.

Blown Tally-Ho stemware was available with frosted bands on the bowls, to match china with rings on it that was popular in the 1930's.

The majority of items made in the Tally-Ho Line are pictured in the N. C. C. Catalog Reprint (pages 32-33 thru 32-36, 33-1 thru 33-6, 33-33, 34-4 and 34-20), as this book covers the time period when most Tally-Ho pieces were produced.

Tally-Ho was one of the most popular of the Cambridge lines and was produced until the mid-1940's, when it was dropped completely from their line.



10" TOP HAT



SHAKER

Study your books and Happy Hunting - - -

- - - - - TALLY-HO !!

FLOWERS & FROGS

by Pat Binkley

Floral arrangements with Cambridge Figural flower frogs take so few flowers and do so much to brighten up your home during these drab winter days. Now would be the perfect time to try your hand at a few of the lovely creations that can be made without a large expenditure of money or effort.

My first efforts looked like perfect examples of what not to do! But with time and the help of friends, local florists and books on floral arranging, I can now put together a nice looking arrangement with my figural holders and very little money.



PHOTO #1

The lovely arrangement shown in Photo #1, was put together for less than 75¢ (prices will vary depending on where you live and the flowers that are in season). For this arrangement, I used the Two-Kid figural in peachblo, with a crystal etched bowl. The flowers used were twelve sweet peas (7 deep coral pink and 5 white), and 5 small stems of babies breath. The sweet peas were 50¢ a bunch (used less than half the bunch) and 25¢ for the babies breath.

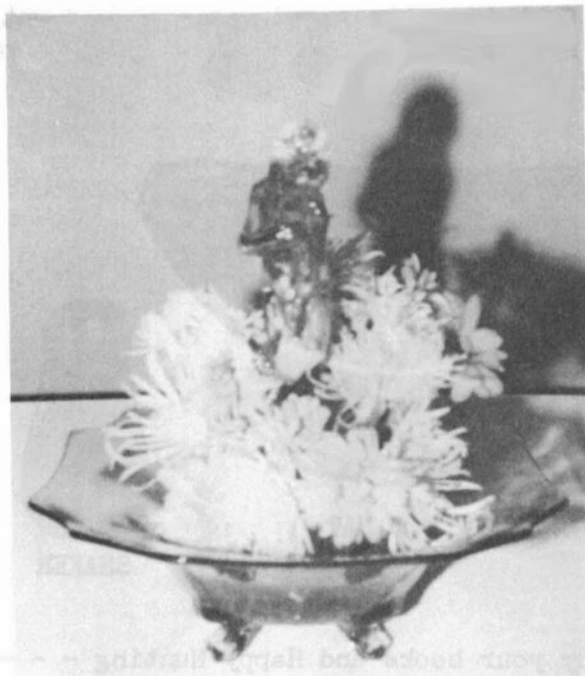


PHOTO #2

In Photo #2, I used the lovely 11", amber, September Morn (or Bashful Charlotte) in an amber bowl. The large daisy mums were an amber rust color and the small spider mums were a pale green. This color combination is pretty any time, but would be exceptionally lovely for a St. Patrick's Day centerpiece. The cost of this arrangement was just \$3.50.

For the arrangement shown in Photo #3, I used my crystal Sea Gull in a crystal lazy susan tray. The Flowers consisted of 7 purple iris, 3 white carnations and 2 iris stems with leaves. Total cost was just \$2.50. (See page 12 for tips on putting this arrangement together.)

continued - - - -

continued - - - -



PHOTO #3

The total cost to me for these three arrangements was less than \$7. This, as you know, is a big savings over the price a Florist would charge, not to mention the pleasure derived from creating something special and beautiful for your home and family. When Spring does arrive and our gardens are once more in bloom, the savings will be even greater.

In putting together a flower arrangement with your figural flower holder, the following suggestions are some of the things I found to be helpful. Hopefully they will prove beneficial to you also.

1. Keep the arrangement in proportion to your frog. Use the head of the figural as a gauge to the size of flowers you use.
2. Don't bury the figural in the flowers, remember, it is the focal point of your arrangement.
3. Keep the arrangement low. Think of your figural in a meadow, not a forest. If you use tall flowers in the back of the arrangement, use just a few and try to give it an open look.
4. Keep the look of the arrangement light, your frog is glass and delicate in appearance.
5. If the color of your frog is hard to match with the flowers you want to use, take white or light cream colored flowers and mist them with spray paint. Hold flower at arms length and spray lightly until you have the desired effect.
6. Flowers such as glads, carnations and roses give a heavy look to these arrangements and should be used with care.
7. Remember to add more water to your arrangement as needed.
8. Wash and dry your frog and bowl after each use to remove water spots and lines.

A complete list of flowers that work well in these arrangements would be a long one but a few examples would be as follows: irises, daisies, mums, babies breath, sweet peas, lilly-of-the-valley, fruit tree blossoms (apple, pear, peach, orange, and others), stocks, honeysuckle, pinks, crocuses, violets, azaleas - or try some of your favorites.



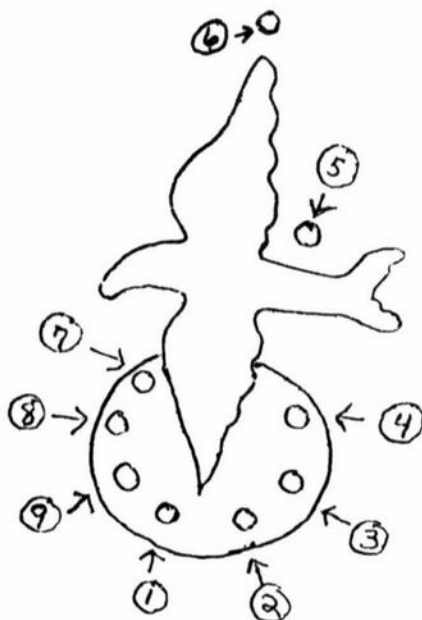
continued on next page - -

continued from page 11 - - -

The arrangement in Photo #3, using the Sea Gull is a good one to start on. If you would like to give it a try, here are the instructions. Good Luck and may all your arrangements be Works of Art and give you great pleasure!

Flowers Needed: 7 Purple Iris - 3 White Carnations - 2 Iris Stems with leaves.

1. Purple Iris, three-quarters full on $2\frac{1}{2}$ " stem.
2. Same as #1, on $3\frac{1}{2}$ " stem.
3. Same as #1, on $4\frac{1}{2}$ " stem.
4. 12" Iris stem w/leaves behind a Purple Iris on 7" stem (both in same hole).
5. Purple Iris, three-quarters to full on $13\frac{1}{2}$ " stem, behind a White Carnation on a $10\frac{1}{2}$ " stem (both in same hole).
6. Same as #1, on 12" stem.
7. Purple Iris, loose bud on 7" stem.
8. White Carnation on $4\frac{1}{2}$ " stem behind a Purple Iris, loose bud on 8" stem (both in same hole).
9. White Carnation on $\frac{1}{2}$ " stem.



CHROME NUDE "STRIPS"



by Jack and Sue Rettig

We have exchanged several letters and phone calls with Marvin and Mary Martin of Canton, Kansas, exchanging information on Cambridge glass. One of the interesting "finds" they have had is described in the following excerpt from one of their letters.

"While doing a show last spring in Manhattan, Kansas, we were with a friend who strips and polishes brass items. We attended a local flea market and found a Cambridge chrome cocktail shaker marked Farber. Our friend was curious whether the base metal of the shaker was brass, so we invested the "great" sum of \$2 so he could strip it and find out. Sure enough it was brass. Stripped and polished, he later sold it for \$35.00."

"We had several pieces of Farber Ware that we had him strip. A nude stem compote turned out to have brass top and foot while the nude was a white metal. A cocktail shaker set was all brass except the handle on the shaker which was the same white metal. These items are all very beautiful in brass."

From Marvin and Mary's information we now know that the base metal of Farber Ware pieces is mostly brass. We are stumped as to what the "white metal" he described could be. If anyone knows, we would like to find out.

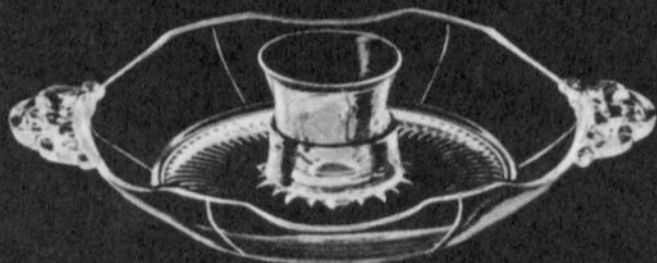
Those of you who like brass in addition to glassware may take a new interest in the Farber Ware products.



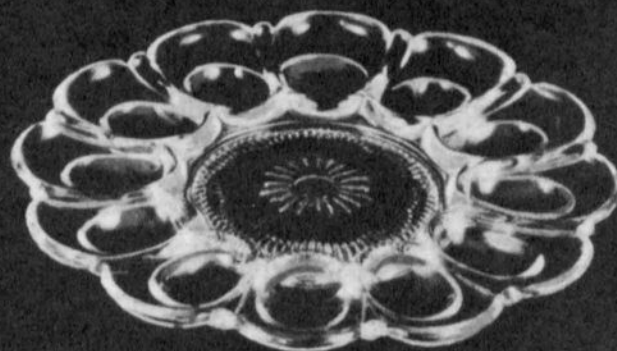
The Cambridge Glass Company



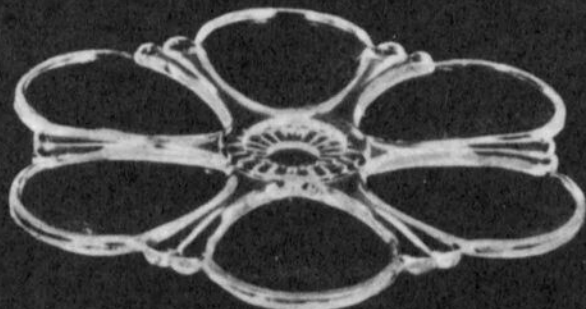
UNUSUAL SERVICE ACCESSORIES



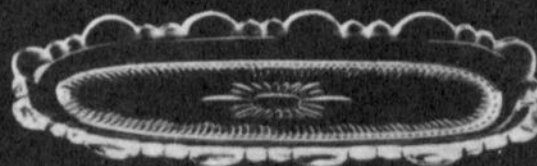
155—2 pc. Shrimp Cocktail Icer



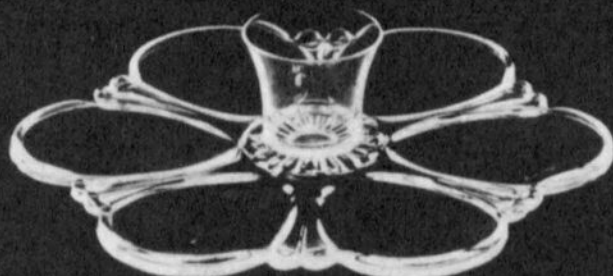
157 Deviled Egg Plate
Patent No. 112168



156 Oyster Plate
Patent No. 111504



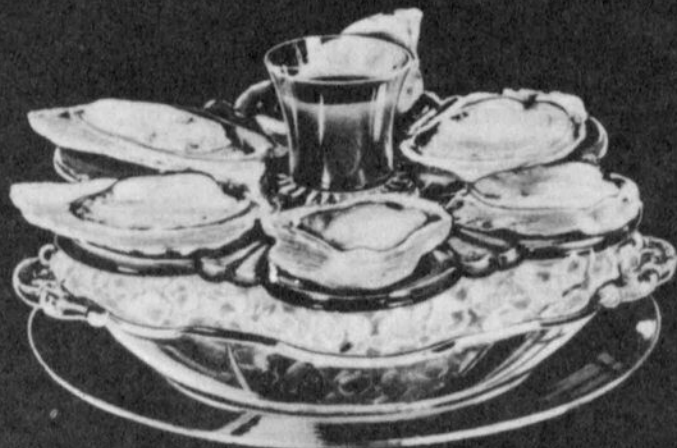
160—9 in. Asparagus Tray



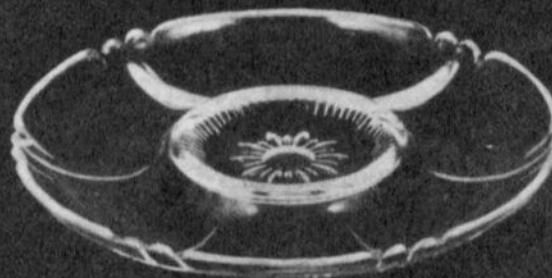
156/69 Oyster Plate & Sauce Cup
Patent No. 111504



163—8½ in. Asparagus Plate



155—4 pc. Oyster Service
(156 Oyster Plate and Sauce Cup)
(155 Ice Bowl)
(244 Service Plate)
Patent No 111504



158 Artichoke Plate

NOTICE

In order to promote additional membership in N. C. C., your Board of Directors has authorized an increase in printing volume of the Cambridge CRYSTAL BALL to approximately 100 extra copies each month.


Limited quantities of these "Complimentary" copies are now being made available to interested parties to be used as hand-outs (along with membership applications) at various Club functions, Glass Shows, etc.

Whenever possible please make your request for these copies at least two months in advance, letting us know how many copies you will need.

— **Classified** —

WANTED: ROSEPOINT STEMWARE. Need 7 sherbets, 5 goblets and 12 wines or cocktails. Not sure of stem number, would appreciate complete description (drawing if possible) of stem, along with price. Mrs. E. Wirt Ingram, 407 W. Sigler, Hebron, Ind. 46341.

WANT TO IDENTIFY and purchase more of a stemmed crystal pattern similar to Rose Point. Have slides and rubbings. Bunny Lanning, 303 S. 13th Street, Murray, Ky. 42071.

FOR SALE: RUBINA COVERED CANDY DISH. Honeycomb pattern, signed  in lid - Welker Book II, plate 3, row 1, #4. Small chip on inside rim of cover. Best offer received by March 30th. S. Wall, 14546 Hesby Street, Sherman Oaks, Calif. 91403 - 312-986-0407.

JOSEPHINE AMMAR

439 Oakland Blvd., Cambridge, Ohio 43725

FOR SALE

124 PIECES CAMBRIDGE, ETCHED ROSEPOINT
Asking \$2,000.00 Firm!

- 12 - #3400, 9 $\frac{1}{2}$ " dinner plates
- 12 - #3400, 7 $\frac{1}{2}$ " luncheon plates
- 11 - #3400, 6" bread & butter plates
- 12 - #3400 cups
- 14 - #3400 saucers
- 12 - #3121, 10 oz. goblets
- 14 - #3121, 6 oz. tall sherbets
- 13 - #3121, 5 oz. footed tumblers
- 12 - #3121, 12 oz. water tumblers
- 2 - sets creamers and sugars
- 2 - sets salt and pepper
- 1 - 12", 5-section celery and relish
- 1 - #3900, 14" sandwich plate
- 1 - 6" compote
- 1 - Round butter with lid

SHIPPING AND INSURANCE EXTRA

Club News

Because of the terrible snow storms and blizzards we have been experiencing here in Ohio these past two months, both the Cambridge Squares and the Hokey-Pokeys Study Clubs have had to cancel their January and February meetings.

We do not have the exact dates, but we do have word that both groups plan to hold their meetings in March. Here's hoping for an early Spring!!

10th Annual Antiques Show and Sale

Sponsored by

Beta Sigma Phi Sorority of Reynoldsburg, Ohio

Saturday, March 11, 1978 - 11 a.m. - 9 p.m.

Sunday, March 12, 1978 - 12 Noon - 6 p.m.

Arts and Crafts Building—Ohio State Fairgrounds

Exit 17th Ave. I-71 Columbus, Ohio

Show Chairman
Mrs. Murray Youtz
1519 Loxdale Drive

Reynoldsburg, Ohio 43068

Benefit: Reynoldsburg Police Dept. and Friends of Pickerington Park

SNACK BAR

Donation \$1.25

Show Manager
George Hoffman
129 S. Fourth Street
Newark, Ohio

DEALERS



DIRECTORY

<p>ANTIQUÉ ALLEY 24815 Broadway Bedford, Ohio 44146 216-232-7739 ---- Marie Spagnola CAMBRIDGE GLASS ROYAL DOULTON</p>	<p>BENICIA ANTIQUE SHOP 305 First Street Benicia, California 94510 OPEN 11 AM - 5 PM Closed Monday</p>	<p>BUSY BEE ANTIQUES 1044 Jublin Road Columbus, Ohio 43215 Robert Cain 614-486-8320 CAMBRIDGE ---- BROWSER'S WELCOME</p>
<p>CHURCH STREET ANTIQUES 6 Church Street Boston, Massachusetts 02116 George or Frank --- 617-426-1048 CAMBRIDGE, HEISEY, GENERAL LINE</p>	<p>Z. E. LOPES - 707-745-0978 VISIT HISTORIC BENICIA and its 28 shops Off Interstate #80 ----- ----- North of San Francisco</p>	<p>D & D ANTIQUES 184 East Kossuth Street (GERMAN VILLAGE) Columbus, Ohio 43206 DICK SLIFKO ----- 614-443-6020</p>
<p>SILVERPLATE MATCHING SERVICE Patterns from 20's, 30's, 40's Send your WANT list and SASE D. A. Nelson - 1546 W. Farwell Chicago, Illinois 60626</p>	<p>GREEN ACRES FARM 2678 State Route 310 North Pataskala, Ohio, 43062 Sat. & Sun. 1-6 PM ---- W. Bryan CAMBRIDGE & HEISEY - 614-927-1882</p>	<p>FINDER'S KEEPER'S ANTIQUES P.O. Box 303 P.O. Box 16023 Dayton, O. Columbus, O. 45401 43216 513-254-2937 614-965-1906 SPECIALIZING IN CAMBRIDGE GLASS!</p>
<p>SWISS HILLS COLLECTIBLES Mary & Wilbur Henderson 303 Guilford Avenue Woodsfield, Ohio 43793 Shows Only -- 614-472-1133 SPECIALIZING IN CAMBRIDGE GLASS!</p>	<p>HERITAGE ANTIQUES Rt. #5, Cambridge, Ohio - 43725 614-439-3241 Take N.8th St.Rd.(County Rd.#33) TURN LEFT AT RAILROAD TRACK</p>	<p>HOBBY HOUSE ANTIQUES Rt. #1, Cambridge, Ohio - 43725 614-432-6971 - Frank & Lena Take Rt.#209 W.From Cambridge To RT. #658 - NORTH 1½ MILES</p>
<p>HOFF - HAVEN ANTIQUES 21 Half Moon Lane Tarrytown, New York 10591 Shows-Mail-No Lists-914-631-2140 CAMBRIDGE, ROSE IN SNOW FOSTORIA</p>	<p>GEORGE HOFFMAN ANTIQUES 129 South 4th Street Newark, Ohio 43055 --- 614-345-8550 ---</p>	<p>D'MARIE'S ANTIQUES US Rt. 1 -- just South of Rt. 606 Thornburg, Virginia 22565 703-582-6220 ----- Jim Rankin OPEN EVERY DAY 10 AM to 6 PM</p>
<p>OUR GLASS ANTIQUES 20th CENTURY COLLECTIBLES featuring CAMBRIDGE GLASS Paul & Ginny Henderson - Box 134 Iselin, NJ 08830 -- 201-283-3181</p>	<p>OLD TOLL GATE ANTIQUES Route #5, Box 7X Milan, Illinois 61264 SPECIALIZING IN HAVILAND CHINA MATCHING SERVICE</p>	<p>PRESIDENTIAL COIN & ANTIQUE CO 6222 Little River Turnpike Alexandria, Virginia - 22312 Gail B. Levine ---- 703-354-5454 WANT LISTS SOLICITED-OPEN 6 DAYS</p>
<p>S & J ANTIQUES 5616 Hensel Woods Road Gahanna, Ohio 43230 Sue & Jack Rettig - 614-855-1711 CAMBRIDGE GLASS OUR SPECIALITY</p>	<p>Use Schleigers book numbers or send saucer for pattern match. SASE APPRECIATED Marie Baker ----- 309-787-2392 GENERAL LINE OF ANTIQUES</p>	<p>YOU CAN ADVERTISE YOUR ANTIQUÉ SHOP HERE! 1 inch - \$6 for six months</p>
<p>A. SPRINGBORN P. O. Box E. G. #962 Melbourne, Florida - 32935 Shop #34, Webster, Florida OPEN EVERY MONDAY 305-254-7439</p>	<p>THE GLASS CUPBOARD 39 Shire Oaks Drive Pittsford, New York 14534 Marcia Ellis 716-586-7596 CAMBRIDGE ONLY --- SASE FOR LIST</p>	<p>M & M ANTIQUES & COLLECTIBLES 310 N. Main -- Box 417 Canton, Kansas 67423 The Martin's ----- 316-628-4705 SPECIALIZING IN CAMBRIDGE GLASS!</p>
<p>WOLFE'S GLASS EMPORIUM 330 Woodlawn Avenue Cambridge, Ohio 43725 John Wolfe ----- 614-432-2590 WED. & FRI. 1-5PM or APPOINTMENT</p>	<p>THIS 'N' THAT PLACE 101 South Street Chagrin Falls, Ohio -- 44022 Lue Koerper ----- 216-247-4938 OPEN THURS.-SAT.---10 AM - 5 PM</p>	<p>YOU CAN ADVERTISE YOUR ANTIQUÉ SHOP HERE! 1 inch - \$6 for six months</p>

National Cambridge Collectors, Inc.

P. O. Box 416, CAMBRIDGE, OHIO 43725



A nonprofit organization dedicated to the preservation and study of Cambridge Glass

**You Are Cordially Invited
To Become A Member Of The
NATIONAL CAMBRIDGE COLLECTORS, INC.**

Benefits derived from membership include: receipt of our club publication, The Cambridge CRISTAL BALL; Informative Quarterly Meetings; Antique Shows; Auctions; and other special events.

The Cambridge CRISTAL BALL is published the first of each month. This newsletter contains educational and interesting articles, questions and answers, information on reproductions and reissues, notices of all club functions, classified advertisements, dealers directory and many other features of interest to collectors of Cambridge glass.

Yearly dues are \$10.00 for Individual Members and \$3.00 for each Associate Member. All members have voting rights, but only one issue of the CRISTAL BALL will be mailed per household.

Name (please print) _____ \$ 10.00

Mailing Address _____

City _____ State _____ Zip _____

Associate Members: (Must be at least 12 years of age and living in the same household.)

1. Name _____
2. Name _____
3. Name _____

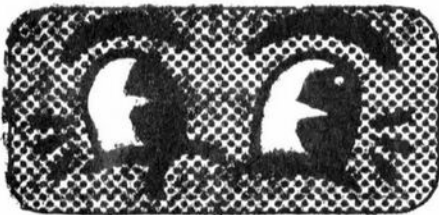
Associate Members @ \$ 3.00 each \$ _____

Please make check payable to: National Cambridge Collectors, Inc.

TOTAL AMOUNT ENCLOSED: \$ _____

Recommended by _____

WATCH!



YOUR CALENDAR FOR THESE IMPORTANT N.C.C. DATES. YOU WON'T WANT TO MISS ANY OF THESE IMPORTANT EVENTS!

1978 NCC CONVENTION and 3rd ANNUAL ANTIQUE SHOW and SALE. To be held the weekend of June 23, 24, and 25, 1978. MARK YOUR CALENDAR NOW!



DON'T FORGET!!

SIGN UP YOUR NEW MEMBER TODAY!!

**NATIONAL CAMBRIDGE COLLECTORS, INC.
P. O. Box #416
Cambridge, Ohio 43725**

FIRST CLASS MAIL