

Cambridge



Crystal Ball

ISSUE NO. 64

AUGUST 1978

Published monthly by the National Cambridge Collectors, Inc.
To encourage and to report the discovery of the elegant and boundless product
of the Cambridge Glass Company, Cambridge, Ohio

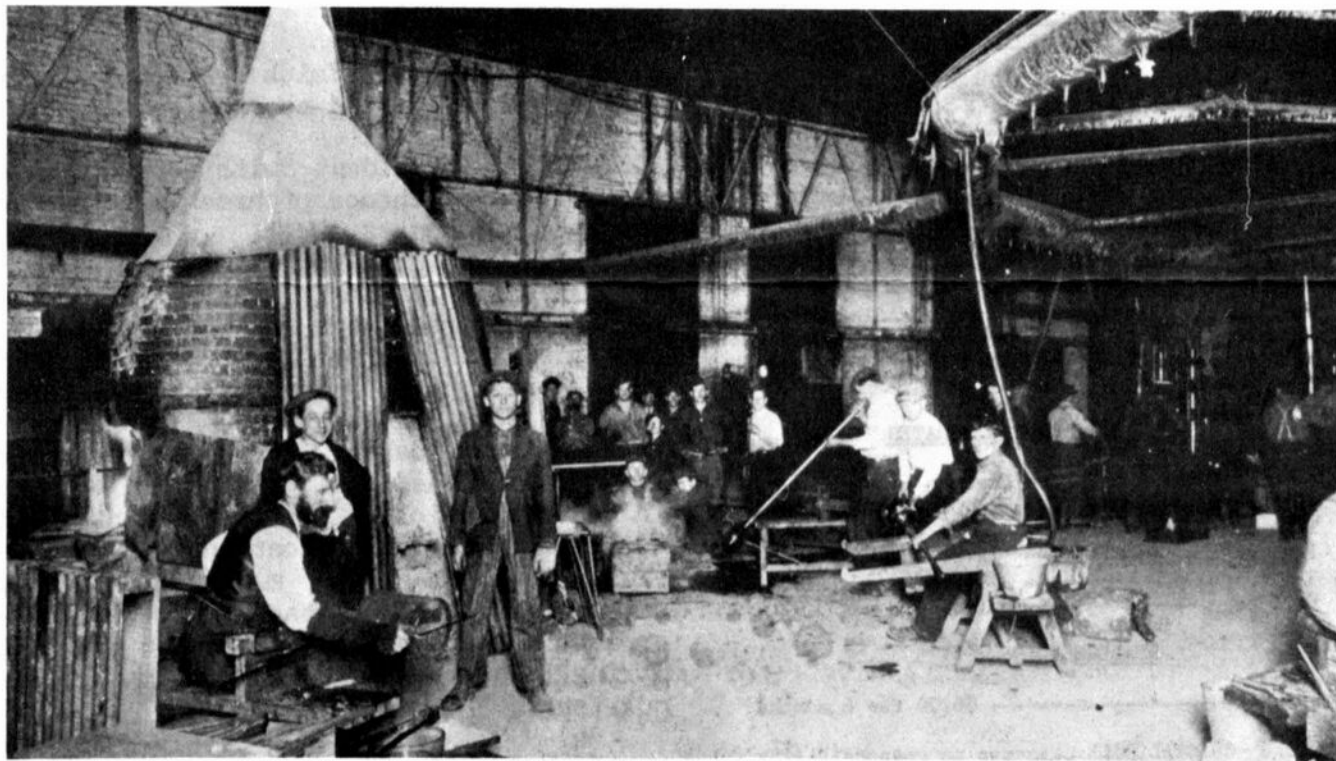


Photo circa 1924

The Cambridge Glass Co., Cambridge, Ohio

Shop making Caster Place, or Hand-Made articles. Fish Globes, Chemical Ware, etc. These workers must have great experience and possess unusual skill.

QUARTERLY MEETING NOTICE!

MEMBERSHIP RENEWAL NOTICE

If the date on your address label is -- 8 - 78
This is your LAST ISSUE of the
CRYSTAL BALL. Please renew NOW!

As we send this issue to the printer, final arrangements have not yet been completed for our August Quarterly Meeting. Complete information will be included in this issue before it is put into the mail. Please plan to attend. Hoping to see you there!

Bice

CAMBRIDGE CRYSTAL BALL

Official publication of National Cambridge Collectors, Inc., a non-profit corporation with tax exempt status. Published once a month for the benefit of its members. Membership is available for individual members at \$10 per year and additional members (12 years of age and residing in the same household) at \$3 ea. All members have voting rights, but only one CRYSTAL BALL will be mailed per household.

Back issues of the CRYSTAL BALL are available to members only, at a cost of 60¢ ea. or 12 issues for \$7.

1978-79 Officers & Committee Chairpersons

PRESIDENT ----- William C. Smith
 VICE-PRESIDENT ----- George W. Hoffman
 SECRETARY ----- Janice Y. Hughes
 TREASURER ----- Doris J. Isaacs
 SERGEANT-AT-ARMS -----
 BUDGET & FINANCE ----- William C. Smith
 BY-LAWS ----- David B. Rankin
 CONVENTION -----
 MEMBERSHIP ----- Josephine A. Barstow
 MUSEUM ----- Arnold Lynd
 PROGRAM & ENTERTAINMENT - Charles A. Upton
 PROJECT ----- David G. McFadden
 PUBLICITY ----- John F. Rettig
 STUDY GROUP ADVISORY ---- Janice Y. Hughes

CRYSTAL BALL Editor ----- Phyllis D. Smith

CLASSIFIED ADVERTISING RATES

5¢ per word \$1.00 minimum

We cannot mix type size in classified advertisements. Abbreviations and initials will count as words. Payment in full must accompany all ads.

DISPLAY ADVERTISING RATES

	Members	Non-Members
1/8 page -----	\$ 4.00	\$ 6.00
1/4 page -----	7.00	10.00
1/2 page -----	12.00	18.00
3/4 page -----	17.00	25.00
Full page -----	22.00	33.00

DEALERS DIRECTORY

1" ad ----- \$6.00 for 6 months

Cambridge CRYSTAL BALL assumes no responsibility for items advertised and will not be responsible for error in price, description or other information.

Advertising copy must be in our hands by the 15th of each month to assure publication in our next issue. Advertisements containing reproductions will not knowingly be accepted unless clearly stated.

PLEASE ADDRESS ALL CORRESPONDENCE TO

Cambridge CRYSTAL BALL
 National Cambridge Collectors, Inc.
 P. O. Box #416
 Cambridge, Ohio 43725

PLEASE NOTIFY US IMMEDIATELY OF ANY CHANGE IN YOUR ADDRESS!

Please enclose a self-addressed, stamped envelope when requesting information!!

Club News

National Cambridge Collectors, Inc.

Fifth Annual Meeting

June 25, 1978

Cambridge Country Club, Cambridge, Ohio

The meeting was called to order at 9:45 AM by President Smith. In attendance were 12 Board members and 93 club members from 17 states. The minutes of the February 25th Quarterly meeting were read by Janice Hughes and approved. The Treasurer's report was given by Doris Isaacs showing the club has a balance of \$3,681.38, and the Museum Fund \$25,549.59. This was a growth of \$13,000 since last June.

COMMITTEE REPORTS

BY-LAWS: President Smith reported there were no proposals and no changes.

CONVENTION: President Smith reported that there was a chance of breaking even on Convention expenses.

CRYSTAL BALL: Editor Phyllis Smith reported this past year she had prepared 12 editions of the CRYSTAL BALL consisting of 182 pages of copy. She thanked all those who had submitted articles or assisted in any way and asked for any old magazine ads, photographs, etc., that could be used in future articles, stating the intent of using new information constantly. She advised that when the master membership reaches 500 the postage rate would decrease. She also invited anyone visiting Springfield to visit CRYSTAL BALL headquarters.

MEMBERSHIP: Chairman Jo Barstow reported we now have 497 \$10 members, 207 \$3 members, 5 Honorary members, for a total of 709. President Smith reported this was an increase of almost 50% in the past year.

PROJECT: Chairman Dave McFadden reported the film "The Crystal Lady" and slides of stems and previous display rooms are now available for rental. He stated there would be a report on the bookend project at the next Quarterly meeting. He thanked Joy McFadden, Vicki Wollenhaupt, Sue, Jack and Kit Rettig, and Lynn Welker for their assistance.

CONVENTION HIGH LIGHTS

by Phyllis Smith

(Photos by Kit Rettig and Billy Shumpert)

Every year after Convention as we sit and reflect, we say to ourself, "this was the best one yet" and this year is no exception - IT WAS THE BEST ONE!

From the time the doors opened for the Antique Show at 6 PM on Friday evening, June 23rd, until closing time on Sunday evening, it was a beautiful weekend.

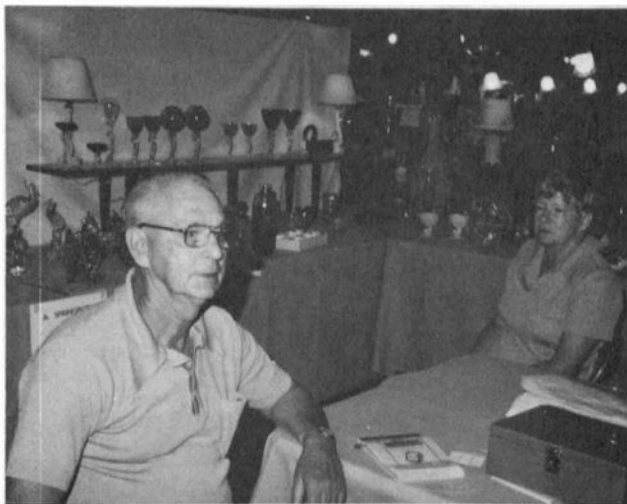


MABEL and DEO BAKER (seated) Brookville, Ohio and MYRL HILL (standing) Cambridge.

Mabel and Deo were taking their turn at the ticket sales table for the Antique Show. Most all of our out-of-town members pitched in to help out where ever they were needed during the entire weekend. It's great fun when everyone works together!

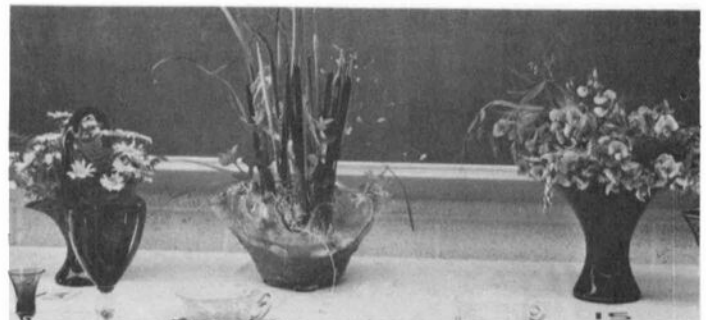


Working at the book sales table were MARYBELLE MOOREHEAD, Cambridge and JOYCE SNYDER, Lake Milton, Ohio. The rug hanging on the gate behind these gals was raffled off by the CAMBRIDGE SQUARES Study Club and the lucky winner was BOB ELLIS from Pittsford, New York.



ALBERT AND AMANDA SPRINGBORN

Everyone was pleased to see Al & Amanda Springborn from Melbourne, Florida. It was great to see Amanda doing so well after her recent illness.



The winning Flower Arrangement (center above) was entered by Virginia Houston, Timberlake, Ohio. She turned her \$25 Savings Bond over to the Museum Fund. Her arrangement was lovely. If you look closely you will see the Heron hiding in the cattail's.

continued on the next three pages



1978

D

I R

S O

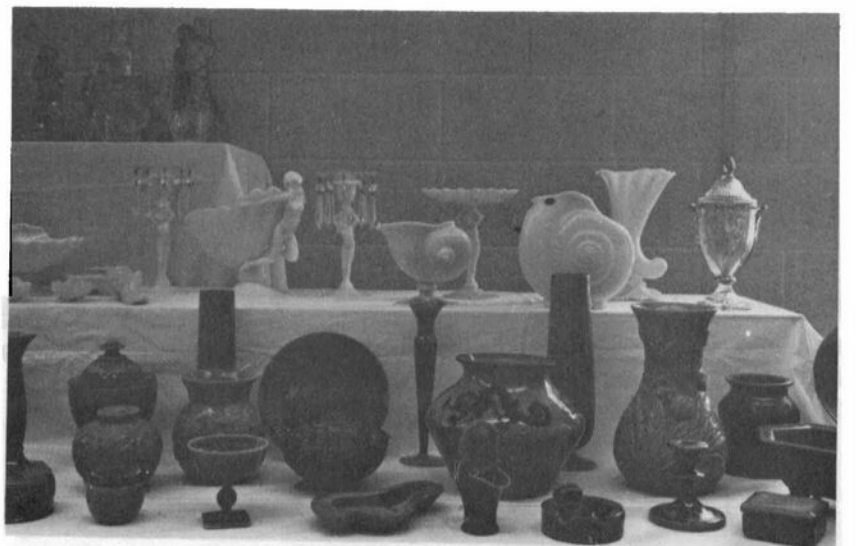
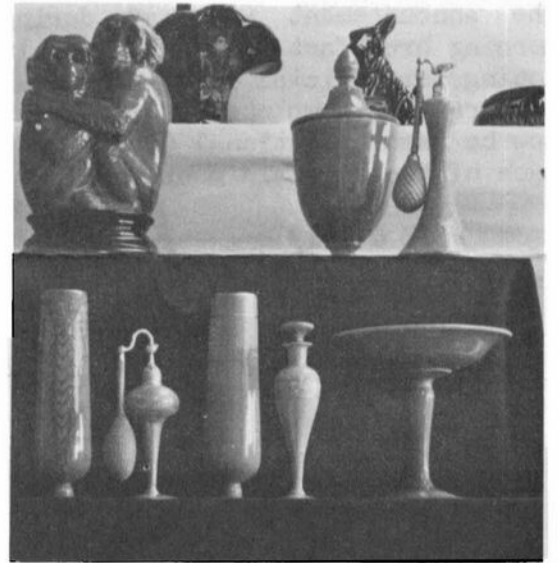
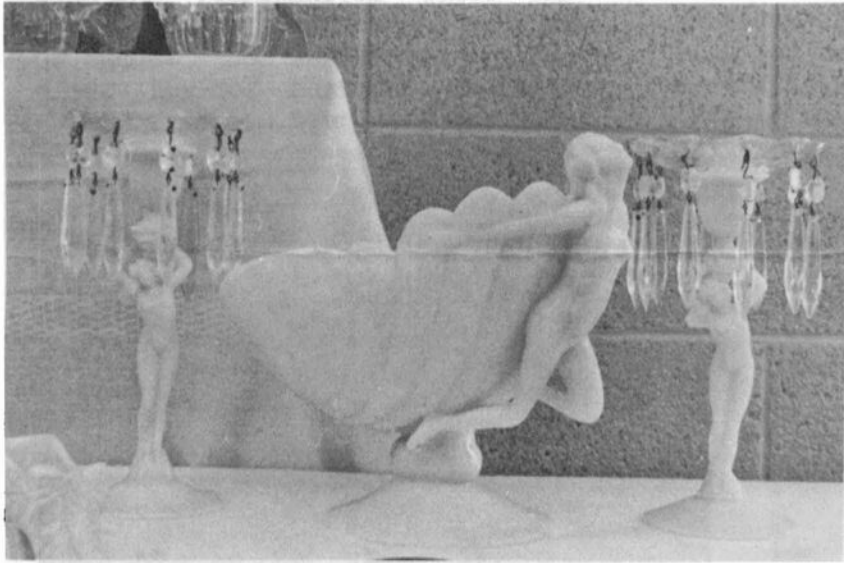
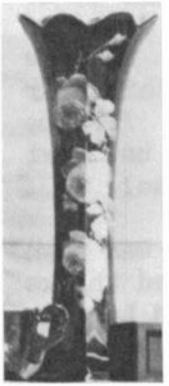
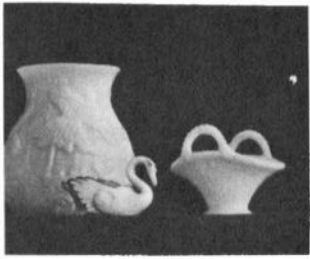
P O

L M

A S

Y







Enough praise can never be lavished upon our Display Room Committee for the outstanding arrangement they provided for us. As you can see from the photos on these pages their display was beautiful. It is a shame we cannot print in color for the benefit of those members who could not be with us this year to enjoy this display. Perhaps more of you will be with us next year. We certainly hope so!

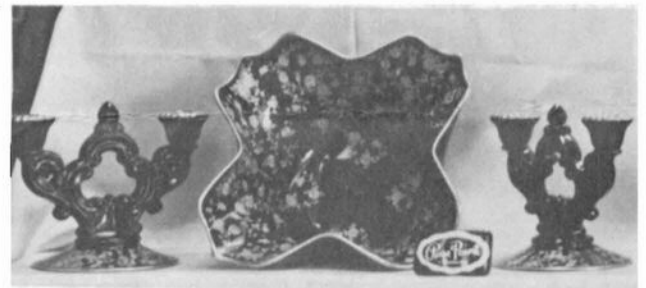
The Antique Show and Sale was both well attended and organized thanks to our Show Chairman Gerald Landman and his assistant, George Hoffman. Of course, without our wonderful Dealers and their outstanding array of beautiful Cambridge Glass and other merchandise, the Show would not have been possible. We can not say "Thank You" enough to everyone concerned for all their work and continued support.

The announcement was made during the Saturday morning breakfast that the results of the balloting for official names for the Figural Flower Holders were complete. The following names will now be used by National Cambridge Collectors for each of the Figurals mentioned.

#513 & #518 ----- Draped Lady

#1114 & #1115 ---- Bashful Charlotte

#572 ----- Rose Lady



Paul and Ginny (hidden) Henderson, Wills Point, Texas, and Mary & Wilbur Henderson, Woodsfield, Ohio, at Saturday's Banquet.



Odulla and Don Armbrecht, Avon Lake, Ohio, and Bob & Marcia Ellis and Marcia's mother Dorothy Petrie, Pittsford, New York.

It is our hope to meet YOU at next year's Convention. Start your plans NOW!!

Rankin Reduces Confusion

by Phyllis Smith

Can you tell the difference between a Cambridge Turkey and all the rest? Do you know at a glance if an ebony stemmed Nude cocktail was made by Cambridge or is one that has been re-issued by Imperial? If your answer to either or both of these questions is "No", then you qualify for "Confused Cambridge Collector" status.

Many "Confused Cambridge Collectors" were gathered at the Saturday morning breakfast during the Convention, listening to our speaker, David Rankin. His topic was entitled "Cambridge Confusables", and we all left this gathering a little less confused than we had been previously.

Dave, as everyone knows, is extremely knowledgeable when it comes to discussing Cambridge glass. He is also the first to admit that there is much yet to be learned about Cambridge glass and that there are few, if any, real experts in this field.

Study is of course the only solution to our problems of confusion, but according to David we must also rely on our instinct as well as our good common-sense when it comes to making the decision as to whether or not a piece of glass is in reality a piece of Cambridge glass. The first and most reliable question to ask yourself is "is the shape Cambridge?", then take a good look at the color, "is the color a Cambridge one?". If you can answer "yes" to both of these questions, then you are headed in the right direction.

It seems that many of us are forever being confused by the L. E. Smith turkey. David showed us an absolutely fool-proof way to never be confused by this turkey again. The next time you see a Turkey at a show, etc., simply walk up to it, remove it's lid and stick your doubled-up fist into it's cavity. A Cambridge turkey will accommodate two fists, with room to spare depending upon the size of your fist. The L. E. Smith turkey has room for only one fist, regardless of it's size.

The next step to follow in identifying a genuine Cambridge Turkey is as follows. As you stand there with both fists in this

Turkey's cavity, take a look at it's base. Does the base have a Waffle effect on it? If it does, it is NOT Cambridge, but an earlier import. If the base does not have this Waffle like effect on it, then there is a good possibility that you are standing with your fists in a REAL Cambridge turkey! (For photos and further information see David's article on Cambridge Turkeys in the December, 1976 issue of the CRYSTAL BALL.)

Another confusing item for many of us is the Nude Stem cocktail that was re-issued by the Imperial Glass Co. for a short period of time. They produced these with both ebony and amber stems with crystal bowl and foot. Since Cambridge did not make them with the amber stem, there is no confusion there. But they did make them with ebony stem and this has produced much confusion for many of us.

According to David, he has struck upon an absolute, positive, way of telling these cocktails apart, and he says he can do it even from across a room!! The "secret" is in the way the ebony stem is reflected in the crystal bowl.



If you can see what appears to be a wafer suspended in the bowl, it IS Cambridge. If on the other hand you see what appears to be a teardrop shape that is connected to the stem, then it is an Imperial re-issue. In the two cocktails he had for display these differences were quite apparent and if our photo reproduces well, you will be able to see the "wafer" in the cocktail on your left.

As with all good things, Dave's talk came too quickly to an end. But someone was overheard to remark that this would be a good discussion to be continued next year. We all hope that this will be the case!

"Near-Cut" Patterns

by Phyllis Smith

When a person collects Cambridge glass, it seems there is no limit to the type of collections one can have.


Collecting Cambridge NearCut Kitchen items can be fun -- but frustrating! In all the years we have been collecting, we have managed to collect only eleven of the items shown on these four pages.


The most common kitchen item is without a doubt, the Bennett Juice Extractor. This extractor was patented on January 6th, 1909 by Mr. A. J. Bennett. In July, 1923, we have found it advertised on the front cover of "China, Glass & Lamps". They say, "Our Extractor is the most Simple and Sanitary on the market. The Patent Seed Retainers are a feature not found in other extractors. The Clean, Clear Crystal glass makes it an attractive article for the household."

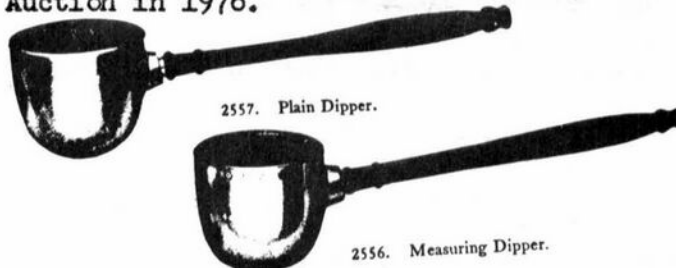
As you can see, these Extractors were available in three sizes and are easily recognized by their distinctive shape. Some of them are marked "Patented Jan 6th 1909 No. 912443". But like all Cambridge glass, many of them have no mark at all. All three sizes are fairly common, and usually moderately priced.



A few years ago, the word was spread among collectors that the 1 pound Butter Molds were being reproduced. Consequently we passed up one at \$10 with both the Cow and Fleur de Lis Print. Haven's seen one for less than \$75 since. Whether or not they were actually reproduced is still unknown, and we still do not own one.

The two Egg Beater bowls pictured here are the quart size. The one with the electric mixer is light emerald green and the one with the hand mixer is light pink. Both of the bowls are marked with the small  which indicates they were produced long after the NearCut era. (Actually between 1927-37, according to Dave Rankin's Trade-mark's articles.) We're still looking for one of these bowls in crystal, marked Near Cut.

We also have a Boston Measuring Cup, Lipped. It is in crystal, and is marked with the old, larger , indicating it was produced before 1927. We were fortunate to purchase this at our All-Cambridge club Auction in 1976.



2557. Plain Dipper.

2556. Measuring Dipper.

Other kitchen items in our collection are the two dippers shown above. We have both the plain and the measuring ones. The #2586 Quart Measuring Jug without the funnel strainer top was a Mother's Day gift one year and the glass fork and spoon shown on the last page of this article was added to our collection during this year's Convention.

To our knowledge we have never seen any of the other items shown. Can't tell you if they will be found marked or not. But can tell you that study and perseverance are the only ways to find these elusive items.

They have to be out there somewhere ———

A few additional NearCut Kitchen items are shown on page 115 of Welker's Reprint II.

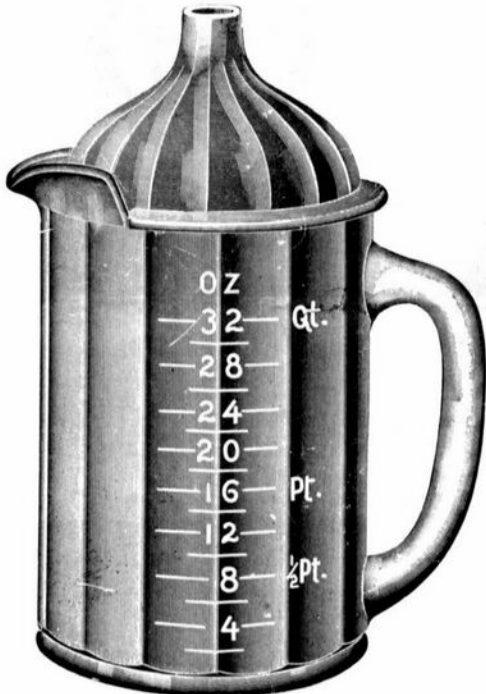
"NEARCUT" KITCHEN UTENSILS.



Cambridge Cooking Cup



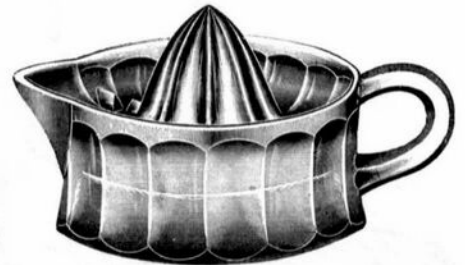
Boston Graduated Cooking Cup



2586 Measuring Jug
With Glass Funnel Cover



Handy Funnel
Made in 2 and 4 oz. Sizes



No. 2674 Bennett Patented Lemon Extractor

We quote prices for FULL PACKAGES ONLY. When LESS QUANTITY is ordered, ADD 10 PER CENT. to above prices.

Items MARKED WITH ★ when ordered in GROSS LOTS or over take package prices.



Kitchen Spice Set
Clear Glass Jars, Nickel Plated Caps, Hard Wood Mission Rack. Letters put on in White Enamel
Each Set in Corrugated Carton

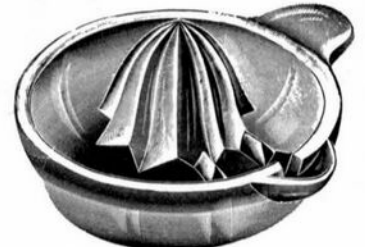
We make only the highest grade pot glass.

PRICE LIST.

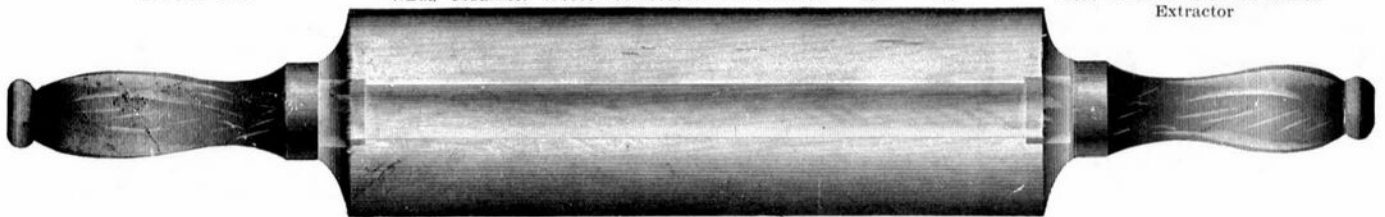
	List Price Per Doz.	Original Pkg. Doz.
Rolling Pin	4 00	5 1/2
★Cambridge Cooking Cup	90	20
★Boston Cooking Cup	90	18
2586—Measuring Jug and Cover, hght. 9 in. ...	4 50	3
★2674—Lemon Extractor	1 50	16
★2698—Lemon Extractor	1 25	18
★2 ounce Handy Funnel	70	60
★4 ounce Handy Funnel	1 00	40
Kitchen Spice Set	14 00	2
★Egg Separator	90	40



Wenzel Egg Separator
Made to fit Boston Cooking Cup



2698 Bennett Patented Lemon Extractor



Regulation Size Glass Rolling Pin, Wood Screw Handle



No. 20. 5, 6, 7, 8, 9, 10, 11 inch
Mixing Bowls Nested



No. 21. Quart
Egg Beater Bowl



No. 21. 3 Pint
Egg Beater Bowl



No. 22. 1 Pound
Kitchen Jar and Cover



No. 22. 2 Pound
Kitchen Jar and Cover



No. 2586. Quart
Measuring Jug
Funnel Strainer Top



No. 2800/68. 39 oz
Ice Jug and Cover



No. 2590/Quart
Handy Kitchen Jug



7 inch Mixing Bowl, Lipped
Made in 5, 6, 7, 8, 9, 10, 11 inch



No. 2586. Quart
Measuring Jug, No Cover



No. 2800/68. 39 oz.
Jug, No Cover



No. 1917/147
Cheese Dish and Cover



1 Pound Butter Molds
Fleur de Lis Print



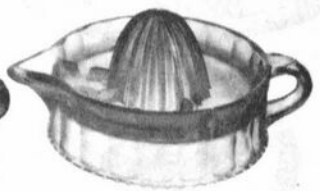
Cow Print



No. 2698
Lemon Juicer



No. 2674
Lemon Juicer



No. 2761
Orange Juicer



No. 20. 5 1/2 inch
Oatmeal Saucer



U. S. N.
Mustard and Cover



U. S. N.
Butter and Cover



Egg Separator
Fits on Top of
Measuring Cup



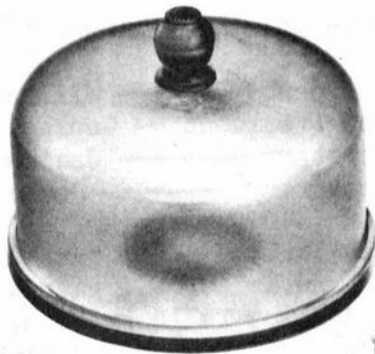
Boston
Measuring Cup, Lipped



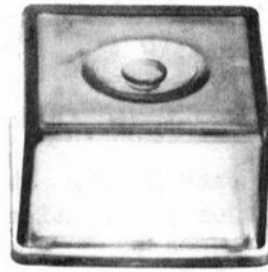
Boston
Measuring Cup



Cambridge
Measuring Cup



No. 2033. 9 in. Cake Plate and Cover
Cover $\frac{1}{4}$ in. Inside Height,



No. 0115. 2 lb.
Kitchen Butter and Cover



No. 8. 3 lb. Kitchen Jar



No. 7. 4 lb. Kitchen Jar



No. 23. 8 lb Kitchen Jar



U. S. N.
Salt, Small



U. S. N.
Salt, Large



U. S. N.
Kitchen Vinegar



Tall Kitchen
Vinegar



No. 100
Spice Jar
8, 16, 32 oz.



No. 1229
Kitchen Salt



2 and 4 oz.
Handy Funnels



No. 694. Plain Funnel
4, 8, 16 oz. Sizes



"Hall Boy" Jug



No. 2858. All Glass Rolling Pin



Glass Fork



No. 2857. Wood Handle Rolling Pin



Glass Spoon



No. 150
Tumbler



No. 57
Tumbler



No. 2615
Oval Table
Salt



No. 2613
Table Salt



Percolator
Cap



No. 2787



No. 2855



No. 2754



No. 2856



No. 2807

STOVE RESTS OR CASTER CAPS



Club News

continued from page 2

PUBLICITY: Chairman Jack Rettig reported we have ads in the major publications and that Lynn Welker had appeared on Channel 7 T-V promoting N.C.C., Inc.

STUDY GROUP ADVISORY: Chairman Janice Hughes reported we still have only two Study Groups at this time but had been contacted by several people during Convention interested in starting Study Groups in their areas.

BUDGET AND FINANCE: President Smith reported we are still operating within the budget.

MUSEUM: Chairman Arnold Lynd reported he is still checking on possibilities and the goal is still "Museum in 1978". Janice Hughes reported several small monetary donations have been made. Norman Alford donated a Pristine pattern goblet with Frenze etching and John Wolfe donated a goblet with an unknown etching.

PROGRAM: Chairman Charles Upton thanked everyone that assisted in presenting the programs and asked for suggestions for future programs.

SHOW: Chairman Gerald Landman reported the admissions for the Show to date were over 500.

All in attendance introduced themselves and told what they collect. This proved to be very interesting and informative.

Virginia Houston asked for a moment of silent prayer to thank God for our arriving here and home safely.

President Smith thanked the local bank for donating the centerpiece and advised the "Frog" favors given at the Banquet were made by Mosser Glass Company.

Dick Houston expressed his thanks to God for the recovery of President Smith.

NEW BUSINESS:

President Smith announced the officers for

the coming year as follows:

President ----- William Smith
Vice-President -- George Hoffman
Secretary ----- Janice Hughes
Treasurer ----- Doris Isaacs

President Smith then turned the meeting over to Lynn Welker who gave a very informative "Show & Tell" program. He was assisted by Doris Isaacs and Jack Rettig.

President Smith returned the door prize of a year's subscription to the Glass Review, he had won at the Banquet. It was then won by Sally Hayler. The door prize for Sunday was won by Jane Wagner. The Centerpiece was won by Joyce Snyder. The Cambridge royal blue bowl holding the centerpiece was donated by Doris Isaacs. It was auctioned off by Lynn Welker and sold to Jack Conner for \$50.

A motion was made by Dave Rankin to adjourn at 11:10 AM.

Janice Hughes
Secretary

Want Study Groups

During Convention, the following members expressed their desires to form a Study Club in their area. If you would be interested in same, please write to the person in your area and send it to P.O.Box 416, Cambridge, Ohio 43725. All mail will be promptly forwarded. Or telephone the person direct where there is a phone number listed.

Joyce Dawson, Oregon.

JoAnne Wegman, Cleveland 216-351-0799.

Raymond W. Pyle, Mentor, Ohio.

Shirley Ladouceur, Central New York, Syracuse or Rochester.

Kenneth Cook, North Central Indiana, 219-653-2511.

Beverley Hanson, California.

BEaWARE of Reissues

by Bill Smith

A recent ad in one of the collector's publications read, "For Sale - Cambridge Lady Leg bookends -- Now in Green Carnival--".

This ad created quite a stir among many of our Cambridge Collectors. Being of the opinion that only crystal pieces were produced by Cambridge, and thinking that the only re-issues were those that had been issued by the Club, we started our search for the source of these Carnival pieces.

Knowing that the mold used for the Club re-issue was owned by the Mosser Glass Co. of Cambridge, our first contact was with Mr. Mosser. He indicated that he did produce these Carnival pieces to fill an order placed by an individual in northeastern Ohio. The order totaled approximately 150 pieces. He further indicated that an order had been placed for another issue of these bookends and that they would be in still another color.

We failed to ask the very important question of whether he had placed his "mark" on these bookends. This mark is a capital letter M in a circle. We will, in the near future try to determine whether the pieces carry this mark, and if they do not, we will discuss the possibility of marking this mold before any crystal pieces would be produced from it. Granted, a mark can be ground off of an item, but if we are careful of pieces that we purchase this can usually be detected.

While visiting the Mosser Glass Co., regarding these bookends, we picked up another interesting bit of re-issue information. Mr. Mosser is also producing a very pretty little child's Punch bowl in the inverted Strawberry Near-Cut Pattern. We do not have to fear this piece however, as it is well marked in the center of the inside of the bowl. Cups are being

Produced to go with this bowl, but they do not appear to be the Strawberry pattern. The cups are also marked on the inside. (We cannot give you a reference for this Punch bowl as we have been unable to find it listed in any of the catalogs.)

Hopefully this information will be of some benefit to you if and when you encounter either of these items. It is unfortunate that collectors must contend with re-issue items, but it is a fact of life, and study will keep us safe. At present we can see no reason for these new items affecting the price of either the Cambridge items or the NCC re-issue bookends.

THE AMERICAN HOME, OCTOBER, 1950

THE AMERICAN HOME, DECEMBER, 1950



But two of many distinctive Krome-Kraft innovations in lustrous, non-tarnishing chrome and fine hand-made colored glass! Patented chrome mountings protect glass, snap on-off for easy cleaning. Superb gifts! At jewelry, gift and department stores.



FARBER BROTHERS
15 Crosby St., New York
"Distinguished for Quality"



Discriminating hostesses hail this versatile Krome-Kraft Lazy Susan. with clear crystal or colored glass set in protective chrome holders . . . holders that snap off and on for easy cleaning! The delightful relish dish also combines non-tarnishing chrome with sparkling glass. Choose them and other Krome-Kraft creations for perfect gifts. At leading jewelry, gift, department stores.



FARBER BROTHERS
15 Crosby St., New York
"distinguished for quality"

Thanks goes to Louise Ream, President of HEISEY COLLECTORS OF AMERICA, for sending us these Farber Brothers advertisements!

Classified

WANTED: CAMBRIDGE "Rosepoint" #3121 iced teas, cocktails, short sherbets, tall sherbets, salad plates. Will sell or exchange 2 water goblets. Glenda B. Stevens, 4209 Seminary Place, New Orleans, La. 70126

A SPECIAL REQUEST!

While at our recent Convention, a special request was made of all of those present, by member Edith Zimmerman from Illinois. She asked that we send our best wishes to fellow member Ida Ashton in Washington state. So here they are, Ida, "Best wishes from all of us here at the Convention and may you some day be here also!"

Best Wishes are also sent to all of our members who could not be with us this year — and may our Club never grow too large to express these kinds of feelings!

American Glass Animals

A to Z"

by Evelyn Zemel
Edited by Ada Wilson



\$18.00
Post Paid

- ★ 300 Pages
 - ★ 25 Company Chapters
 - ★ 285 Photos & drawings
 - ★ Articles by Leading Glass Authorities
 - ★ Large Photos
- With easy to read text

ALL THE ANIMALS FOR
THE FIRST TIME
UNDER ONE COVER!!

★★★★★★★★★★

\$18.00 Post Paid

Please send check or
money order to:
A. TO Z Productions
Dept. CB
230 NW 126th St.
North Miami, Fl 33168



BOOKS FOR SALE

All of the available reference books relating to Cambridge glass can be ordered directly from the Club.

Address your orders for any of the following to:

BOOKS
National Cambridge Collectors, Inc.
P. O. Box 416
Cambridge, Ohio 43725

Ohio residents please add 4½% State Sales Tax.

by National Cambridge Collectors, Inc.

1949 - 1953 CAMBRIDGE GLASS CO. CATALOG REPRINT
(300 page reprint of original catalog)
Hardbound with Price Guide \$14.95

1930 - 1934 CAMBRIDGE GLASS CO. CATALOG REPRINT
(250 page reprint of original catalog)
Hardbound with Price Guide \$14.95

1978 PRICE GUIDE
for 1930-1934 catalog reprint \$2.00

by Mary, Lyle, and Lynn Welker

CAMBRIDGE GLASS CO.
(120 pages of reprint from 8 old catalogs) \$6.95

CAMBRIDGE GLASS CO. BOOK II
(119 pages of reprint from old catalogs) \$6.95

CAMBRIDGE, OHIO GLASS IN COLOR II
(15 color plates w/ descriptions and notes) \$5.95

by Harold and Judy Bennett

THE CAMBRIDGE GLASS BOOK
(96 pages with 59 color plates)
Paperback \$8.95 Hardbound \$9.95

1903 CAMBRIDGE GLASS CO. CATALOG REPRINT
(106 page reprint of an original catalog) \$7.50

by Charles and Mary Alice Upton

1975 PRICE GUIDE to the CAMBRIDGE GLASS BOOK
(Prices for each item in Bennett book) \$1.75

DEALERS



DIRECTORY

<p>ANTIQUÉ ALLEY 24815 Broadway Bedford, Ohio 44146 216-232-7739 ---- Marie Spagnola CAMBRIDGE GLASS ROYAL DOULTON</p>	<p>BENICIA ANTIQUE SHOP 305 First Street Benicia, California 94510 OPEN 11 AM - 5 PM Closed Monday</p>	<p>BUSY BEE ANTIQUES 1044 Dublin Road Columbus, Ohio 43215 Robert Cain 614-486-8320 CAMBRIDGE ---- BROWSER'S WELCOME</p>
<p>CHURCH STREET ANTIQUES 6 Church Street Boston, Massachusetts 02116 George or Frank --- 617-426-1048 CAMBRIDGE, HEISEY, GENERAL LINE</p>	<p>Z. E. LOPES - 707-745-0978 VISIT HISTORIC BENICIA and its 28 shops Off Interstate #80 ----- ----- North of San Francisco</p>	<p>D & D ANTIQUES 184 East Kossuth Street (GERMAN VILLAGE) Columbus, Ohio 43206 DICK SLIFKO ----- 614-443-6020</p>
<p>SILVERPLATE MATCHING SERVICE Patterns from 20's, 30's, 40's Send your WANT list and SASE D. A. Nelson - 1546 W. Farwell Chicago, Illinois 60626</p>	<p>GREEN ACRES FARM 2678 State Route 310 North Pataskala, Ohio, 43062 Sat. & Sun. 1-6 PM ---- W. Bryan CAMBRIDGE & HEISEY - 614-927-1882</p>	<p>FINDER'S KEEPER'S ANTIQUES P.O. Box 303 Dayton, O. 45401 P.O. Box 16023 Columbus, O. 43216 513-254-2937 614-965-1906 SPECIALIZING IN CAMBRIDGE GLASS!</p>
<p>SWISS HILLS COLLECTIBLES Mary & Wilbur Henderson 303 Guilford Avenue Woodsfield, Ohio 43793 Shows Only -- 614-472-1133 SPECIALIZING IN CAMBRIDGE GLASS!</p>	<p>HERITAGE ANTIQUES Rt. #5, Cambridge, Ohio - 43725 614-439-3241 Take N.8th St.Rd.(County Rd.#33) TURN LEFT AT RAILROAD TRACK</p>	<p>HOBBY HOUSE ANTIQUES Rt. #1, Cambridge, Ohio - 43725 614-432-6971 - Frank & Lena Take Rt.#209 W.From Cambridge To RT. #658 - NORTH 1½ MILES</p>
<p>HOFF - HAVEN ANTIQUES 21 Half Moon Lane Tarrytown, New York 10591 Shows-Mail-No Lists-914-631-2140 CAMBRIDGE, ROSE IN SNOW FOSTORIA</p>	<p>GEORGE HOFFMAN ANTIQUES 129 South 4th Street Newark, Ohio 43055 --- 614-345-8550 ---</p>	<p>D'MARIE'S ANTIQUES US Rt. 1 - just South of Rt. 606 Thornburg, Virginia 22565 703-582-6220 ----- Jim Rankin OPEN EVERY DAY 10 AM to 6 PM</p>
<p>OUR GLASS ANTIQUES Box 27, Wills Point, Tex. 75169 Both ENTUR COLLECTIBLES fea- turing CAMBRIDGE GLASS! Shows- No Lists - SASE Please - PAUL & GINNY HENDERSON -- 214-563-6971</p>	<p>OLD TOLL GATE ANTIQUES Route #5, Box 7X Milan, Illinois 61264 SPECIALIZING IN HAVILAND CHINA MATCHING SERVICE</p>	<p>OLDE TOWNE ANTIQUES 307 W. St. Louis Street Lebanon, Illinois 62254 Edith Zimmerman -- 618-537-4567 GENERAL LINE ANTIQUES</p>
<p>S & J ANTIQUES 5616 Hensel Woods Road Gahanna, Ohio 43230 Sue & Jack Rettig - 614-855-1711 CAMBRIDGE GLASS OUR SPECIALITY</p>	<p>Use Schleigers book numbers or send saucer for pattern match. SASE APPRECIATED Marie Baker ----- 309-787-2392 GENERAL LINE OF ANTIQUES</p>	<p>WOLFE'S GLASS EMPORIUM 330 Woodlawn Avenue Cambridge, Ohio 43725 OPEN BY APPOINTMENT - JOHN WOLFE 614-432-2590 OR 614-855-7645</p>
<p>KILPATRICK'S ANTIQUES (Lu, Dort and Pat) S. E. Corner Public Square Troy, Ohio 45373 Res.(513) 335-1798 Shop 339-8754 WE BUY ONE PIECE OR COLLECTIONS!</p>	<p>THE GLASS CUPBOARD 39 Shire Oaks Drive Pittsford, New York 14534 Marcia Ellis 716-586-7596 CAMBRIDGE ONLY --- SASE FOR LIST</p>	<p>M & M ANTIQUES & COLLECTIBLES 310 N. Main - Box 417 Canton, Kansas 67428 The Martin's ----- 316-628-4705 SPECIALIZING IN CAMBRIDGE GLASS!</p>
<p>ROLLING ACRES ANTIQUES C. R. #33 (8th St. Rd.) Cambridge, Ohio 43725 Sandy Jenkins ----- 614-432-2570 CAMBRIDGE & GENERAL LINE ANTIQUES</p>	<p>EVELYN M. ALLEN 135 Cynthia Street Heath, Ohio 43055 Mail Order & Shows 614-522-1635 SPECIALIZING IN CAMBRIDGE GLASS!</p>	<p>JEWELL'S TREASURE BOX 6141 No. State 60, NW McConnelsville, Ohio 43725 (mail order or shows only) STERLING & PLATE FLATWARE Specializing in Older Patterns</p>

National Cambridge Collectors, Inc.

P. O. Box 416, CAMBRIDGE, OHIO 43725



A nonprofit organization dedicated to the preservation and study of Cambridge Glass

**You Are Cordially Invited
To Become A Member Of The
NATIONAL CAMBRIDGE COLLECTORS, INC.**

Benefits derived from membership include: receipt of our club publication, The Cambridge CRYSTAL BALL; Informative Quarterly Meetings; Antique Shows; Auctions; and other special events.

The Cambridge CRYSTAL BALL is published the first of each month. This newsletter contains educational and interesting articles, questions and answers, information on reproductions and releases, notices of all club functions, classified advertisements, dealers directory and many other features of interest to collectors of Cambridge glass.

Yearly dues are \$10.00 for Individual Members and \$3.00 for each Associate Member. All members have voting rights, but only one issue of the CRYSTAL BALL will be mailed per household.

Name (please print) _____ \$ 10.00

Mailing Address _____

City _____ State _____ Zip _____

Associate Members: (Must be at least 12 years of age and living in the same household.)

1. Name _____
2. Name _____
3. Name _____

Associate Members @ \$ 3.00 each \$ _____
Please make check payable to: National Cambridge Collectors, Inc.

TOTAL AMOUNT ENCLOSED: \$ _____

Recommended by _____

CONVENTION DISPLAY ROOM

National Cambridge Collectors, Inc.
P. O. Box #416
Cambridge, Ohio 43725



FIRST CLASS MAIL

FOR ADDITIONAL CONVENTION COVERAGE
- see inside -