

Cambridge



Crystal Ball

ISSUE NO. 65

SEPTEMBER 1978

Published monthly by the National Cambridge Collectors, Inc.
To encourage and to report the discovery of the elegant and boundless product
of the Cambridge Glass Company, Cambridge, Ohio

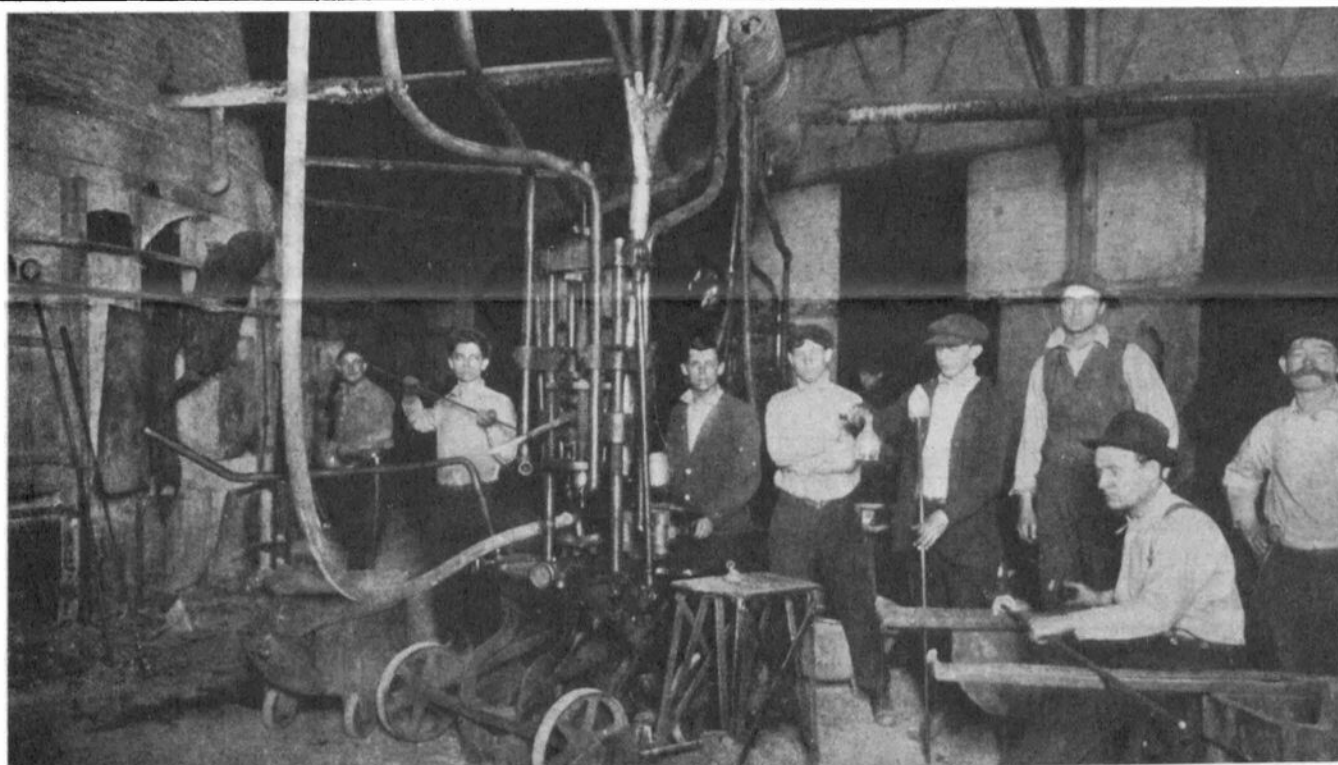


Photo circa 1924

The Cambridge Glass Co., Cambridge, Ohio

PRESSING OIL BOTTLES

These men, now experienced workers, began as boys - with the first operation of the factory in 1902 - served their apprenticeship and are now full fledged workers.

MEMBERSHIP RENEWAL NOTICE

If the date on your address label is - - 9 - 78
This is your LAST ISSUE of the
CRYSTAL BALL. Please renew NOW!

BIG NEWS Next month!! POUTER PIGEON Book-ends next project. AUCTION to be held in March. Time and place to be announced. A new location for the SHOW and CONVENTION?? Our committees are working diligently putting these events together and we will update you as soon as possible. Some Museum Committee irons are getting very hot!!

Bice

CAMBRIDGE CRYSTAL BALL

Official publication of National Cambridge Collectors, Inc., a non-profit corporation with tax exempt status. Published once a month for the benefit of its members. Membership is available for individual members at \$10 per year and additional members (12 years of age and residing in the same household) at \$3 ea. All members have voting rights, but only one CRYSTAL BALL will be mailed per household.

Back issues of the CRYSTAL BALL are available to members only, at a cost of 60¢ ea. or 12 issues for \$7.

1978-79 Officers & Committee Chairpersons

PRESIDENT ----- William C. Smith
 VICE-PRESIDENT ----- George W. Hoffman
 SECRETARY ----- Janice Y. Hughes
 TREASURER ----- Doris J. Isaacs
 SERGEANT-AT-ARMS -----
 BUDGET & FINANCE ----- William C. Smith
 BY-LAWS ----- David B. Rankin
 CONVENTION ----- George W. Hoffman
 MEMBERSHIP ----- Josephine A. Barstow
 MUSEUM ----- Arnold Lynd
 PROGRAM & ENTERTAINMENT - Charles A. Upton
 PROJECT -----
 PUBLICITY -----
 STUDY GROUP ADVISORY ----- Janice Y. Hughes

1979 CAMBRIDGE AUCTION ----- Lynn Welker

CRYSTAL BALL Editor ----- Phyllis D. Smith

CLASSIFIED ADVERTISING RATES

5¢ per word \$1.00 minimum

We cannot mix type size in classified advertisements. Abbreviations and initials will count as words. Payment in full must accompany all ads.

DISPLAY ADVERTISING RATES

	Members	Non-Members
1/8 page -----	\$ 4.00 - - -	\$ 6.00
1/4 page -----	7.00 - - -	10.00
1/2 page -----	12.00 - - -	18.00
3/4 page -----	17.00 - - -	25.00
Full page -----	22.00 - - -	33.00

DEALERS DIRECTORY

1" ad ----- \$6.00 for 6 months

Cambridge CRYSTAL BALL assumes no responsibility for items advertised and will not be responsible for error in price, description or other information.

Advertising copy must be in our hands by the 15th of each month to assure publication in our next issue. Advertisements containing reproductions will not knowingly be accepted unless clearly stated.

PLEASE ADDRESS ALL CORRESPONDENCE TO

Cambridge CRYSTAL BALL
 National Cambridge Collectors, Inc.
 P. O. Box #416
 Cambridge, Ohio 43725

PLEASE NOTIFY US IMMEDIATELY OF ANY CHANGE
 IN YOUR ADDRESS!

Please enclose a self-addressed, stamped envelope when requesting information!!

Club News

CAMBRIDGE SHOWS COLORS AT THE STATE FAIR

Once again Cambridge has shown its colors at the Ohio State Fair. We were pleased to see 30 ribbons adorning Cambridge pieces at the opening of the Fair.

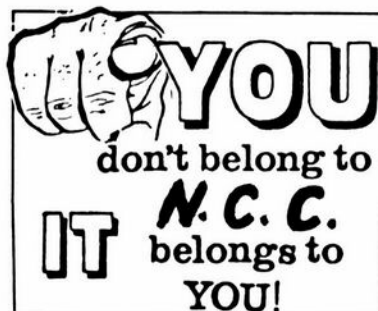
Of the five places awarded, Cambridge took 4 First, 7 Second, 2 Third, 8 Fourth, and 9 Fifth Place Ribbons.

A frosted Scotty Bookend took a First in Camphor; a 13" pink Draped Lady a First in Ohio Colored Figurines; a Feather footed Bowl a First in Ohio-Clear (marked); and a Windsor blue Seashell Comport a First in Ohio-Colored (marked).

This year three pieces of crystal with Ruby flashing were entered in the Carmen "Red" category and two of these pieces took ribbons. As it was the intent of the Board when establishing this category to judge Carmen or "Red" glassware, this presented a problem. Mrs. Loraine Wulber, Director of the Family Arts and Crafts Department explained that this was caused by a misunderstanding on the part of the Judge and apologized to the Club for this problem. She assured us that this will not recur.

We hope that those of you who could, visited the Fair and took the time to see the glassware on display.

Reported by Sue Rankin



"The man down the street laments that once a guy pays his bills these days, about all he has left to spend is a nice quiet evening."

—Herb Albright

Cambridge RUBINA

by Russell Vogelsong

This fine color line of Cambridge Glass was introduced to the public January 25, 1925. Some of the names given to this glass thru the years are unbelievable. I have heard this glass called Amberina, Blurina, Christmas Glass, Watermelon Glass, Multi Glass, and Alexandrite.

We have received information from an old glass trade journal describing Cambridge Rubina upon its introduction. The article reads exactly as follows:

"Living up to its reputation of introducing each January most interesting developments in table and decorated glassware, The Cambridge Glass Company of Cambridge, Ohio, has on display in Room 728 at the Fort Pitt Hotel in Pittsburgh, Pennsylvania, unusual lines and a new color glass called Rubina.

This new Rubina glass can be had both plain and optic. New shapes in comports, bowls, vases, candlesticks and other pieces have been developed.

Especially attractive is the refreshment set in Rubina. The new glass is not one color, but a natural three or more tone glass, in which the predominating shades are red, green and blue. Each tone is diverging into the other."

Although this description was accurate, it could not describe what is seen with the naked eye. Colors flow into each other in a way that it is impossible to tell exactly where one color stops and another begins.

Rubina at this time is a semi-rare item and is not plentiful. Because of the color combination I am sure it was collected by people long before Cambridge Glass was even considered a collectors item.

Usually when Rubina is found at Antique Shops it is not priced cheap. Although bowls and comports seem to be the more common, there are certain items that demand and bring top prices, such as the Ramshead bowl, Dolphin candlesticks, etc.

One of the finest and rarest pieces of Rubina I have seen has been a 12" bowl in the Stratford pattern. I would have to say this peice is "Super Rare". More Rubina will surface in the years to come and accordingly the prices will continue to elevate.

A POINT OF VIEW

While we are talking about Cambridge glass having two or more shades, I would like to elaborate on Carmen Red Glass. If you have seen or own Cambridge Carmen Red, you know that many pieces will have an amber or yellow tone in them. Many people have chosen to loosely interpret the word, Amberina.

Many times we will see items priced and labeled Cambridge Amberina, that are Carmen Red with gold tones and are very high priced. The only thing I can say is Carmen Red is Carmen Red and Amberina is another color.

When Amberina is made with the intention of having a two-tone effect it is called Amberina. I don't consider a Carmen Red item that has a yellow tone in the bottom of it Amberina and neither do the people who collect Cambridge Glass.

(Reprinted from Vogelsong Newsletter, Vol. I, No. 6, December 30, 1971.)

Sonata the oval line

These items are also made . . .
 No. 1957/110 — OVAL CUP AND SAUCER
 No. 1957/113 — 10" PLATE WITH SEAT FOR No. 110 CUP
 No. 1957/117 — OVAL CELERY AND RELISH
 No. 1957/121 — 1-LITE CANDLESTICK



No. 1957/124 — BONBON



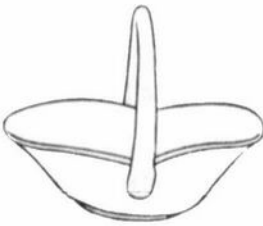
No. 1957/101
SMALL OVAL BOWL



No. 1957/129 — HDL. SAUCE BOAT



No. 1957/100
10" OVAL BOWL



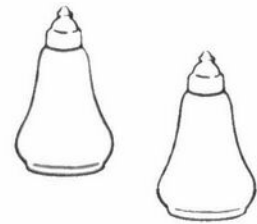
No. 1957/131 — HDL. BASKET



No. 1957/132 — HDL. BASKET



No. 1957/130
SWEET DISH & COVER



No. 1957/112 — SALT & PEPPER



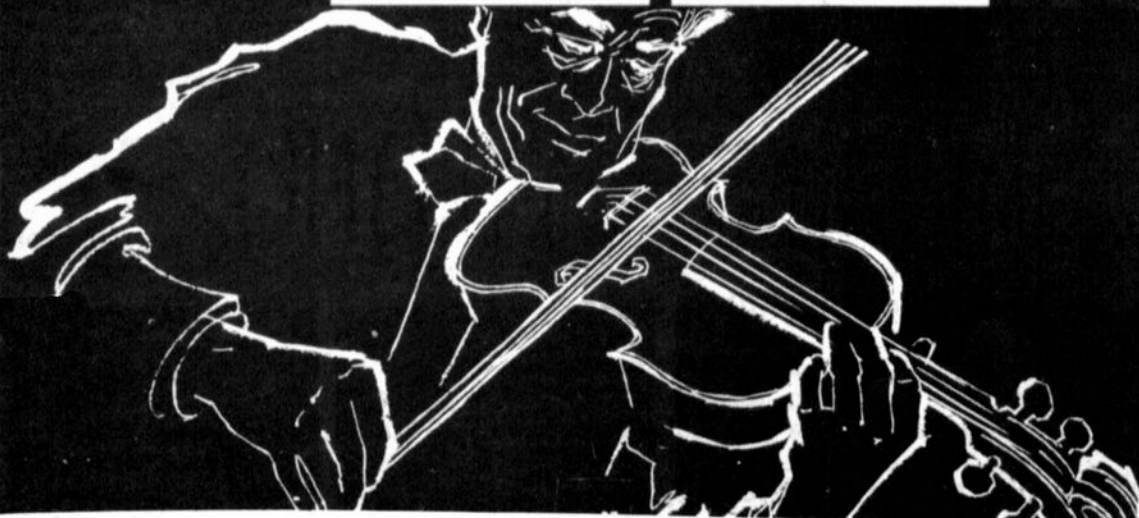
No. 1957/135 — OIL



No. 1957 — MARTINI SWIRLER



No. 1957 — GOBLET





No. 1957 — SHERBET



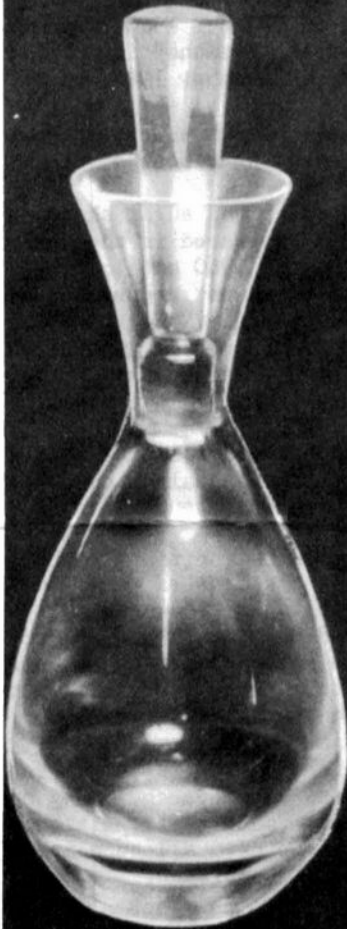
No. 1957 — COCKTAIL



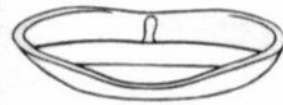
No. 1957/110 — CUP & SAUCER



No. 1957/127 — 3 PC. MAYONNAISE SET



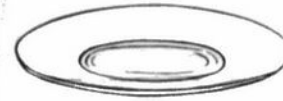
No. 1957 — DECANTER



No. 1957/116 — CELERY & RELISH



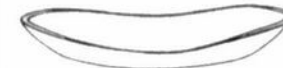
No. 1957 — WINE



No. 1957/33
15" TORTE PLATE



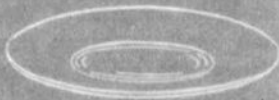
No. 1957 — CORDIAL



No. 1957/117
CELERY



No. 1957/41 — SUGAR & CREAM



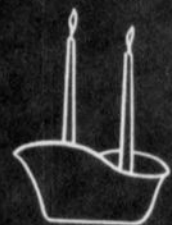
No. 1957/115 — SALAD PLATE
No. 1957/114 — 10 IN. DINNER PLATE



No. 1957 — ICE TEA



No. 1957 — 5 OZ. PTD.



No. 1957/120
2-LITE CANDLESTICK



THE CAMBRIDGE GLASS COMPANY, CAMBRIDGE, OHIO, U. S. A.


sparkling reasons

DEERFIELD GLENDALE DOVER
 LARCHMONT
 ROXBURY TEMPO FLEURETTE CORTLAND

why CAMBRIDGE
Hand-Cut Rock Crystal
WILL GLORIFY YOUR TABLE

Alight with the fires of a thousand precious jewels, rock crystal cuttings by Cambridge express the ultimate in elegance and luxury for table settings. Each design is truly an exquisite work of art, entirely handcraft, created in pure, famed-for-brilliance Cambridge crystal. You will enjoy choosing from a complete selection of distinctive, gracious motifs of which these are but a few examples. Look for the name Cambridge for authentic hand-cut rock crystal. Moderately priced at good stores everywhere.

THE CAMBRIDGE GLASS COMPANY, CAMBRIDGE, OHIO


Cambridge
 HAND-MADE *for Beauty*

The ads that make up this article have been forwarded to us by Gwen and Billy Shumpert, Tupelo, Mississippi. Our purpose in reprinting them at this time is two-fold. First, they provide new and additional pattern or shape information, and secondly, they serve to reaffirm the fact that each of you could assist us in the search for this history of our glassware.

These ads were each taken from copies of "House and Garden" which were purchased at a Flea Market. These particular issues were in bound copies of the magazines that had been discarded by the University of Notre Dame Library.

The "Manor" ad appeared in October 1940, "Hanover" in October 1941, "8 Sparkling Reasons" in October 1943 and "Rock Crystal" in November 1944.

We can point out several areas in which ads such as these assist in our on-going research.

In the "Manor" ad the creamer and sugar shape is note-worthy. This shape appeared in the early Pristine Line depicted in the 1940 catalog (Welker Reprint II page 41). It was dropped sometime prior to the 1949 catalog. Note that the handles used on these pieces were without holes for the finger. This is similar to the Caprice and Virginian handle. Very difficult to hold.

The ad "8 Sparkling Reasons" provides us with a picture of two new patterns and also the names of these patterns, Cortland and Fleurette.

These ads also provide us with additional dating information. Many of the patterns shown did not appear in the 1940 catalog or on any known supplement pages that were dated June 1941, however since they were in these National ads in October of 1943 we can surmise that their production was introduced between these two dates.

The importance of such information is, of course relative to your interests in research. Many of our collectors do desire to date their patterns, and as a collective group we need all such items to complete our panorama of Cambridge.

We would stress that the quantity of such advertising that is available to the CRYSTAL BALL is very small, and again submit the plea that each of you could help to ease the situation. As you pursue your normal course of collecting be on the alert for old copies of magazines that would carry these ads. This would include some of the following at least: Ladies Home Journal, House Beautiful, House and Garden, and American Home. The known date range for these ads would be from the late 1930's thru early 1954. There could be more titles involved and the date range could vary a little, but any ad bearing the Cambridge heading could be useful.

Your efforts and contributions would greatly assist your Editor in preparing interesting future issues of the CRYSTAL BALL, as well as help to complete our Cambridge story.

HANOVER

IN CAMBRIDGE
HAND CUT ROCK CRYSTAL



The diamond-like brilliance of this striking new Cambridge cutting will transform your table into a setting of incomparable charm. Hanover has dignity, it has grace. It is thoroughly modern in design with a spirit of restrained elegance that makes it as practical as it is beautiful. Available in more than 100 hand-made pieces at surprisingly modest prices. The Cambridge Glass Company, Cambridge, Ohio.

HAND-MADE BY **Cambridge**

MANOR - A Gracious Design in CAMBRIDGE Hand-Cut Rock Crystal

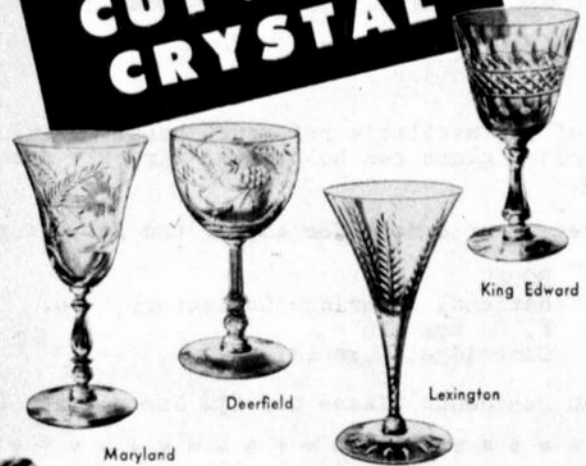
Cambridge presents the diamond-like brilliance of *Manor*, a superb, new rock crystal design of unusual grace and refinement. The simple, refreshing motif of the cutting, entirely handcraft, assures easy adaptability to a multitude of charming settings. Available in more than 100 pieces - at surprisingly modest prices - at surprisingly modest prices. Other new and exclusive popular-priced Cambridge cuttings are the *Concord*, *King Edward* and *Montrose* patterns.

The Cambridge Glass Co.,
Cambridge, Ohio



Cambridge Glass
HAND MADE

CAMBRIDGE CUT ROCK CRYSTAL



Maryland

Deerfield

Lexington

King Edward

Famed FOR ITS
FINE HAND CRAFTSMANSHIP

Gifted hands, long skilled in the making of fine decorated crystalware, impart to Cambridge Cut Rock Crystal the exquisite workmanship which distinguishes it from ordinary cut glass. Each is an individually perfect piece, in which the supreme brilliance of the Cambridge Crystal itself, the grace of the design, the flaming, jewel-like facets of the cutting . . . combine to achieve that "thing of beauty" which is "a joy forever."

When you buy cut rock crystal, don't compromise on quality . . . ask for . . . be willing to wait for . . . "Cambridge." Wide selection of authentic motifs, of which those shown are but a few examples. The Cambridge Glass Co., Cambridge, Ohio.

Caprice . . . BRILLIANT, RIPPLING LIGHTS FOR YOUR TABLE



No design in Cambridge Hand-Made Crystal has pleased so many women as *Caprice*, with its waves of light that play and ripple in ever-changing pattern. It is versatile . . . at home in any setting. Yet it is one of the most inexpensive and practical of patterns . . . unusually easy to clean and safe to handle. 150 open stock pieces in clear Crystal or Moonlight Blue.

If your dealer is temporarily out of any item, please be patient.

Cambridge
HAND-MADE *for Beauty*

BOOKS FOR SALE

All of the available reference books relating to Cambridge glass can be ordered directly from the Club.

Address your orders for any of the following to:

BOOKS
National Cambridge Collectors, Inc.
P. O. Box 416
Cambridge, Ohio 43725

Ohio residents please add 4½% State Sales Tax.

by National Cambridge Collectors, Inc.

1949 - 1953 CAMBRIDGE GLASS CO. CATALOG REPRINT
(300 page reprint of original catalog)
Hardbound with Price Guide \$14.95

1930 - 1934 CAMBRIDGE GLASS CO. CATALOG REPRINT
(250 page reprint of original catalog)
Hardbound with Price Guide \$14.95

1978 PRICE GUIDE
for 1930-1934 catalog reprint \$2.00

by Mary, Lyle, and Lynn Welker

CAMBRIDGE GLASS CO.
(120 pages of reprint from 8 old catalogs) \$6.95

CAMBRIDGE GLASS CO. BOOK II
(119 pages of reprint from old catalogs) \$6.95

CAMBRIDGE, OHIO GLASS IN COLOR II
(15 color plates w/ descriptions and notes) \$5.95

by Harold and Judy Bennett

THE CAMBRIDGE GLASS BOOK
(96 pages with 59 color plates)
Paperback \$8.95

1903 CAMBRIDGE GLASS CO. CATALOG REPRINT
(106 page reprint of an original catalog) \$7.50

by Charles and Mary Alice Upton

1975 PRICE GUIDE to the CAMBRIDGE GLASS BOOK
(Prices for each item in Bennett book) \$1.75

"Near-Cut" Patterns

by Phyllis Smith

The NearCut pattern we are showing you this month is a bit more unusual than most of our NearCut. Our catalog page is in bad condition, so we hope our printer will be able to do whatever he can to reproduce it well. To our knowledge this will be the first time this pattern has ever been shown.

We know of only one piece in this pattern. It is a basket and try as we may, the owner will not part with it! Can't say that we blame her, we wouldn't part with it either. Please note that the leaves are pressed and the flowers have been cut to finish the design.

The NearCut catalog that this page comes from does not have a date as to when it was issued, so the best we can do is venture a slightly educated guess. The following text is found in the front of the catalog and provides us with our only clue.

"We beg to draw your attention to the fact that we operate two factories, one at Cambridge and the other at Byesville, Ohio, with main offices at Cambridge, O.

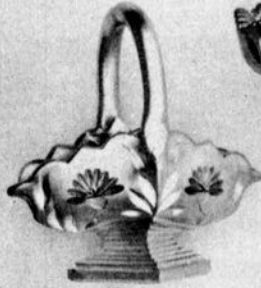
The Cambridge factory produces a full line of pressed tableware, bar supplies and iron mold goods, as well as a full line of druggist sundries; while the Byesville factory manufactures a complete line of lead blown tumblers and stemware in fancy cuttings and etchings.

We employ upwards to 800 people in our factory and invite you to visit us and see a model glass factory."

From the information we have available to us at this time, the Byesville plant was in operation from approximately 1910 to 1916.

We would like to express our Thanks to Mr. Tom Mosser for allowing us to use his catalog for this series of articles.

THESE CUTTINGS CAN BE FURNISHED
IN ALL ITEMS.



7 1/2 in. Ftd. and Hld. Basket.
Cut No. 2075.



6 in. H. F. Bon Bon.
Cut No. 2078



12 in. Celery Tray.



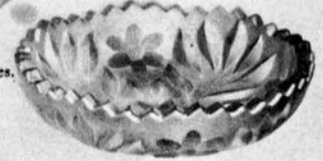
7 in. Nappy, Shallow.



6 in. 2 Handled Nappy.
Also made in 7 and 8 in. sizes.



6 in. Handled Olive.
Also made in 7 in. size.



8 in. Nappy, Shallow.



8 in. Division Lunch Tray.
2 Handles. 4 Compartments.



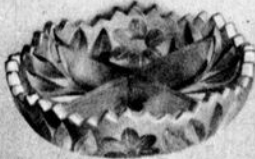
6 in. Nappy, Shallow.



7 in. Division Lunch Tray.
2 Handles. 4 Compartments.



8 in. Deep Bowl.
Also made in 7 in. size.



7 in. Division Lunch Tray.
No Handles. 4 Compartments.



8 in. Division Lunch Tray.
No Handles. 4 Compartments.



7 in. Division Lunch Tray.
1 Handle. 4 Compartments.



11 in. Oval Orange Bowl.



8 in. Square Bowl.



5 in. Square Footed Mayonnaise.
1 Handle.



5 in. Square Footed Mayonnaise.
2 Handles.



7 in. Square Compot.



Sugar, Berry, 2 Handles.



Cream, Berry, Handled.



Tumbler.



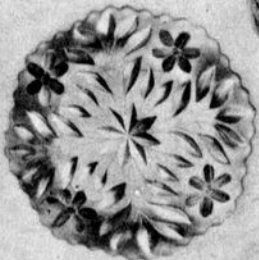
5 in. Square Compot.



7 in. Spoon Tray.



9 in. Pickle Tray.



7 in. Candy Tray, Round.



6 in. H. F. Bon Bon.



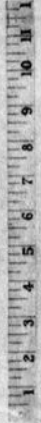
7 1/2 in.
Footed and Handled Basket.
Also made in 6 in.
Tall Handled Basket.



9 in. Square Vase.
Also made as
8 in. Round Vase.



1/2 Gallon Tankard.





The Cambridge Glass Company



JUGS



Mt. Vernon 90—50 oz.
Jug



Mt. Vernon 91—86 oz.
Jug



Mt. Vernon 13—66 oz.
Jug



Caprice 178—80 oz. Doulton



Mt. Vernon 95—80 oz. Ball Jug



Caprice 179—32 oz. Ball



Caprice 183—80 oz. Ball



75—54 oz. Jug



76—64 oz. Ftd. Jug



71—86 oz. Jug Cut Top

JANUARY 1, 1940

Cambridge, Ohio - - - U. S. A.



The Cambridge Glass Company



JUGS



3143/38—80 oz. Ball, Ice Lipped
Gyro-Optic



3143/40—83 oz. Ice Lipped
Gyro-Optic



3143/39—86 oz. Ice Lipped
Gyro-Optic



Pristine 70—20 oz. Ice Lipped



Shell 45—52 oz.



1561—86 oz. Ice Lipped



1560—80 oz. Ice Lipped
2 Handles

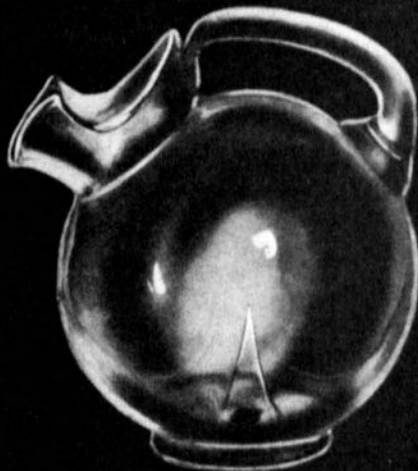
JANUARY 1, 1940

Cambridge, Ohio - - - U. S. A.

Page 415



JUGS



3400/38—80 oz., Ball, Ice Lipped
Also
3400/114—72 oz., Ball, Ice Lipped



3400/114—72 oz. Aero-Optic
Ice Lipped



3400/100—76 oz. Ice Lipped



3400/141—80 oz.



3400/152—76 oz. Doulton



3400/154—76 oz. Pinched



119—83 oz. Ice Lipped



3450—84 oz. Ice Lipped Nautilus

JANUARY 1 1940

Cambridge, Ohio U. S. A.



Daffodil... a new etching by

Cambridge

Can't you just tell by the looks of this gorgeous new etched crystal that Daffodil's for you? What an exquisitely lovely, fresh design! Such richness in the glow of its traceries! Such deep-from-within sparkle that bespeaks Cambridge quality. Daffodil is truly crystal in its finest, most elegant form. You'll be thrilled to own it . . . you'll be proud to give it. Priced most moderately . . . in the best stores.



Crystal-bright idea

Give Cambridge crystal in individual gift place settings of goblet, sherbet and cocktail glasses, salad plate. Selection of plain, etched and engraved patterns from about \$5 to \$14 per setting. The Cambridge Glass Company, Cambridge, Ohio.

Choose by the Cambridge label—symbol of the finest hand-made American crystal



This ad sent us courtesy of Louise Ream, President HEISEY COLLECTORS OF AMERICA from THE AMERICAN HOME magazine - May, 1952

Classified


FOR SALE: GREEN CARNIVAL Inverted Strawberry Puff Box, no lid \$60; crystal Caprice 6" Candy Dish with cover \$20; crown tuscan footed Shell Compote \$30; Chantilly etched Ice Bucket with handle \$37; Nude Farber Compote with amber liner, small nick \$45; amber center handled Sandwich Plate \$20. Postage & Insurance extra. LASHER ASSOCIATES, 119 Water St., Gaithersburg, Md. 20760 - 301-977-8296.

FOR SALE: JAPONICA VASE, royal blue, overall white decoration, 8½" tall, nearly oval shape 6½" x 4" at top, similar to one pictured in July 26, 1978 "Antique Trader", page 56. \$750. H. S. KALTENBORN, 169 So. Mendenhall, Memphis, Tn. 38117.

"He who thinks he knows it all is most annoying to those of us who do."
----- Good Reading

American Glass Animals
A to Z"

by Evelyn Zemel
Edited by Ada Wilson



\$18.00
Post Paid


- ★ 300 Pages
- ★ 25 Company Chapters
- ★ 285 Photos & drawings
- ★ Articles by Leading Glass Authorities
- ★ Large Photos

With easy to read text

ALL THE ANIMALS FOR THE FIRST TIME UNDER ONE COVER!!
★★★★★★★★★★

\$18.00 Post Paid

Please send check or money order to:
A. TO Z Productions
Dept. CB
230 NW 128th St.
North Miami, Fl 33168



LaVERNE KILEY

4974 N. 22nd St., Milwaukee, Wis. 53209
Phone 414-442-1284

TALLY-HO #1402

7 royal blue 10 oz. lunch goblets #4 -----	\$ 17.00
6 royal blue 5 oz. juice #8 ----	16.00
2 carmen 10 oz. lunch goblets #4 -----	17.00
5 carmen 5 oz. juice #8 -----	16.00

CAPRICE - MOONLIGHT BLUE

#101 oil & vinegar w/tray (set)-	55.00
#165 Ftd. candy w/lid (small inner flakes) -----	22.50
#1338 3-lite candleholder (pr.)-	37.50

CAPRICE - CRYSTAL

80 oz. jug -----	22.00
8" hdd. round base bowl -----	7.50
11½" ftd. oval bowl - has a few little scratches -----	8.50
13½" ftd. plate rolled edges ---	10.50
10" ftd. round bowl - has chip on one foot -----	6.00

DECAGON - CLEO ETCH PINK (lt. use)

4 8½" plates -----	4.50
2 saucers -----	2.50
4 cereal bowls flat rim -----	8.50
1 cup & saucer (set) -----	7.50
1 hdd. bouillon w/saucer (set)-	8.50

ROSEPOINT

4 #3500 8¼" plates - few lt. marks -----	12.00
8 #3500 7½" plates - few lt. marks -----	10.00
6 #3121 tall sherbets -----	15.00
6 #3121 10 oz. tall goblets ----	17.00
4 #3121 6 oz. low sherbets ----	14.00
#495 Martha 5½" candleholders 1 has chip above point (pr.)--	22.00
#394 5-part relish -----	24.00
#3400/11 mayo plate only - has lt. use -----	4.00
#3400/4 11½" ftd. bowl -----	24.50
#3500/69 Gadroon 3-pt. relish --	14.00

MISCELLANEOUS

3 royal blue 9 oz. Georgian tumblers -----	18.00
2 same as above - have pin dot nicks -----	14.00
3 NearCut (marked) Marjorie 9 oz. tumblers -----	12.00
#3400/88 11" yellow 2-pt. relish -	16.00
#533 ftd. mayo w/ladle, pink with #540 etching -----	6.50

All prices EACH - plus Postage
THANK YOU!

CONNIE DeANGELO

3340 Birch Ave., Allentown, Pa. 18103
Phone 215-432-8473

ROSEPOINT

1 12" keyhole vase -----	\$ 55.00
11 #3121 10 oz. ftd. tumblers (ea.) -----	18.00

ELAINE

1 7½" Gadroon #3500/37 comport -----	25.00
---	-------

ROUND DINNERWARE - GREEN W/#520 ETCH

1 creamer & sugar (set) -----	16.50
6 cups & saucers (sets) -----	7.00
6 8" plates (ea.) -----	6.00
All 20 pieces listed -----	85.00

VISA and MASTERCHARGE!

Postage and Insurance extra - UPS -
except - \$50 orders sent Post Paid

Send wants - CAMBRIDGE - HEISEY - DUNCAN
- FOSTORIA - DEPRESSION! SASE Please!

Allenwood PTG Presents

1st Annual
CENTRAL JERSEY DEPRESSION GLASS CLUB
SHOW & SALE

COLLECTIBLES

Allenwood School South Rt. 34 to
G.S. Parkway Exit 98* Atlantic Avenue

Saturday, OCTOBER 14, 1978
Time: 11 AM to 5 PM

DONATION: \$1.25

INFORMATION: Peggy Staab
2419 Hemlock Lane
Point Pleasant, N.J. 08742
Phone 201-892-5406

* Garden State Parkway

DEALERS



DIRECTORY

<p>ANTIQUÉ ALLEY 24815 Broadway Bedford, Ohio 44146 216-232-7739 ---- Marie Spagnola CAMBRIDGE GLASS ROYAL DOULTON</p>	<p>BENICIA ANTIQUE SHOP 305 First Street Benicia, California 94510 OPEN 11 AM - 5 PM Closed Monday</p>	<p>YOU CAN ADVERTISE YOUR ANTIQUÉ SHOP HERE! 1 inch - \$6 for six months</p>
<p>CHURCH STREET ANTIQUES 6 Church Street Boston, Massachusetts 02116 George or Frank --- 617-426-1048 CAMBRIDGE, HEISEY, GENERAL LINE</p>	<p>Z. E. LOPES - 707-745-0978 VISIT HISTORIC BENICIA and its 28 shops Off Interstate #80 ----- ----- North of San Francisco</p>	<p>D & D ANTIQUES 184 East Kossuth Street (GERMAN VILLAGE) Columbus, Ohio 43206 DICK SLIFKO ----- 614-443-6020</p>
<p>YOU CAN ADVERTISE YOUR ANTIQUÉ SHOP HERE! 1 inch - \$6 for six months</p>	<p>GREEN ACRES FARM 2678 State Route 310 North Pataskala, Ohio, 43062 Sat. & Sun. 1-6 PM --- W. Bryan CAMBRIDGE & HEISEY - 614-927-1882</p>	<p>FINDER'S KEEPER'S ANTIQUES P.O. Box 303 Dayton, O. 45401 P.O. Box 16023 Columbus, O. 43216 513-254-2937 614-965-1906 SPECIALIZING IN CAMBRIDGE GLASS!</p>
<p>SWISS HILLS COLLECTIBLES Mary & Wilbur Henderson 303 Guilford Avenue Woodsfield, Ohio 43793 Shows Only --- 614-472-1133 SPECIALIZING IN CAMBRIDGE GLASS!</p>	<p>HERITAGE ANTIQUES Rt. #5, Cambridge, Ohio - 43725 614-439-3241 Take N.8th St.Rd.(County Rd.#33) TURN LEFT AT RAILROAD TRACK</p>	<p>HOBBY HOUSE ANTIQUES Rt. #1, Cambridge, Ohio - 43725 614-432-6971 - Frank & Lena Take Rt.#209 W.From Cambridge To RT. #658 - NORTH 1½ MILES</p>
<p>HOFF - HAVEN ANTIQUES 21 Half Moon Lane Tarrytown, New York 10591 Shows-Mail-No Lists-914-631-2140 CAMBRIDGE, ROSE IN SNOW FOSTORIA</p>	<p>GEORGE HOFFMAN ANTIQUES 129 South 4th Street Newark, Ohio 43055 --- 614-345-8550 ---</p>	<p>D'MARIE'S ANTIQUES US Rt. 1 - just South of Rt. 606 Thornburg, Virginia 22565 703-582-6220 ----- Jim Rankin OPEN EVERY DAY 10 AM to 6 PM</p>
<p>OUR GLASS ANTIQUES Box 27, Wills Point, Tex. 75169 20th CENTURY COLLECTIBLES fea- turing CAMBRIDGE GLASS! Shows- No Lists - SASE Please - PAUL & GINNY HENDERSON -- 214-563-6971</p>	<p>OLD TOLL GATE ANTIQUES Route #5, Box 7X Milan, Illinois 61264 SPECIALIZING IN HAVILAND CHINA MATCHING SERVICE Use Schleigers book numbers or send saucer for pattern match. SASE APPRECIATED Marie Baker ----- 309-787-2392 GENERAL LINE OF ANTIQUES</p>	<p>OLDE TOWNE ANTIQUES 307 W. St. Louis Street Lebanon, Illinois 62254 Edith Zimmerman -- 618-537-4567 GENERAL LINE ANTIQUES</p>
<p>S & J ANTIQUES 5616 Hensel Woods Road Gahanna, Ohio 43230 Sue & Jack Rettig - 614-855-1711 CAMBRIDGE GLASS OUR SPECIALITY</p>	<p>THE GLASS CUPBOARD 39 Shire Oaks Drive Pittsford, New York 14534 Marcia Ellis 716-586-7596 CAMBRIDGE ONLY --- SASE FOR LIST</p>	<p>WOLFE'S GLASS EMPORIUM 330 Woodlawn Avenue Cambridge, Ohio 43725 OPEN BY APPOINTMENT - JOHN WOLFE 614-432-2590 OR 614-855-7645</p>
<p>KILPATRICK'S ANTIQUES (Lu, Dort and Pat) S. E. Corner Public Square Troy, Ohio 45373 Res.(513) 335-1798 Shop 339-8754 WE BUY ONE PIECE OR COLLECTIONS!</p>	<p>EVELYN M. ALLEN 135 Cynthia Street Heath, Ohio 43055 Mail Order & Shows 614-522-1635 SPECIALIZING IN CAMBRIDGE GLASS!</p>	<p>M & M ANTIQUES & COLLECTIBLES 310 N. Main - Box 417 Canton, Kansas 67428 The Martin's ----- 316-628-4705 SPECIALIZING IN CAMBRIDGE GLASS!</p>
<p>ROLLING ACRES ANTIQUES C. R. #33 (8th St. Rd.) Cambridge, Ohio 43725 Sandy Jenkins ----- 614-432-2570 CAMBRIDGE & GENERAL LINE ANTIQUES</p>	<p>JEWELL'S TREASURE BOX 6141 No. State 60, NW McConnelsville, Ohio 43725 (mail order or shows only) STERLING & PLATE FLATWARE Specializing in Older Patterns</p>	

National Cambridge Collectors, Inc.
P. O. Box 416, CAMBRIDGE, OHIO 43725



A nonprofit organization dedicated to the preservation and study of Cambridge Glass

**You Are Cordially Invited
To Become A Member Of The
NATIONAL CAMBRIDGE COLLECTORS, INC.**

Benefits derived from membership include: receipt of our club publication, The Cambridge CRYSTAL BALL; informative Quarterly Meetings; Antique Shows; Auctions; and other special events.

The Cambridge CRYSTAL BALL is published the first of each month. This newsletter contains educational and interesting articles, questions and answers, information on reproductions and reissues, notices of all club functions, classified advertisements, dealers directory and many other features of interest to collectors of Cambridge glass.

Yearly dues are \$10.00 for Individual Members and \$3.00 for each Associate Member. All members have voting rights, but only one issue of the CRYSTAL BALL will be mailed per household.

Name (please print) _____ \$ 10.00

Mailing Address _____

City _____ State _____ Zip _____

Associate Members: (Must be at least 12 years of age and living in the same household.)

1. Name _____
2. Name _____
3. Name _____

Associate Members @ \$ 3.00 each \$ _____

Please make check payable to: National Cambridge Collectors, Inc.

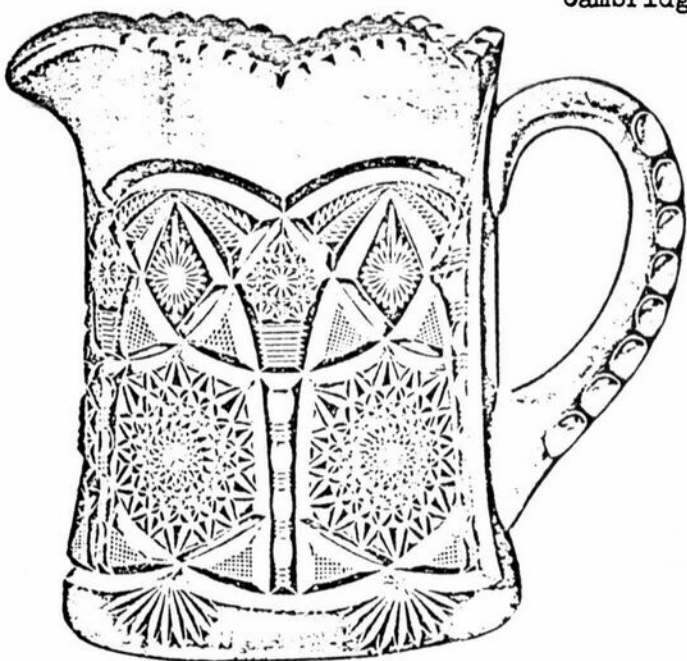
TOTAL AMOUNT ENCLOSED: \$ _____

Recommended by _____

National Cambridge Collectors, Inc.
P. O. Box #416
Cambridge, Ohio 43725

"NEARCUT"

FIRST CLASS MAIL



2677 Large Half Gallon Pitcher