

# Cambridge



# Crystal Ball

ISSUE NO. 75

JULY 1979

Published monthly by the NATIONAL CAMBRIDGE COLLECTORS, Inc.  
To encourage and to report the discovery of the elegant and boundless product  
of the Cambridge Glass Company, Cambridge, Ohio

## Thoughts from the President - - - -

How does one put to words the myriad thoughts that flow from an extravaganza such as this past weekend?

From the frenzied flurry of preparation to the frazzled feeling of fatigue at the finish, it was three days of festal fever marked by fellowship and the fabulous display of beautiful collectibles.

The functional nature of the facility picked for this year's event set the stage for a Convention and Show that is unsurpassed in the history of the Club.

A circular showroom, well lighted, carpeted, and air conditioned (nearly to the point of frostbite) provided the setting for a formidable array of fascinating glassware and antiques presented by our dealers. The fierce competition among both dealers and buyers rewarded many of the fervent fanciers with fruitful results. The flitting from booth to booth, the fondling of cherished items, and the final finagling of prices was enjoyed by all. In some instances it was fruitful and in others it was futile (dependent upon the point of view).

Just up the hallway a few steps, many of the faithful followers were spending fascinating moments (and hours) focusing on the fantastic gold and black display room, fervently foraging thru the library materials for further information on their favorite pattern

or color, or filling information gaps with information from the very graphic stem and candlestick slide presentations.

Interspersed strategically throughout the above pastimes were the various meetings which provided the bulk of the Convention events. All, of course, appropriately accompanied by an abundance of flavorful food.

The focal points here were the very fruitful talks presented by our speakers. Mr. David Rankin's "Cambridge Blues", accompanied by a slide presentation focusing on the fluorescent properties of the various formulas for the blue colors; Mr. William Heacock's enlightening historical talk "The National Glass Co.", which brought forth many of the reasons for the rise and early demise of the giant combine which was the parent company of the Cambridge Glass Co.; Mr. Lynn Welker's capable handling of our traditional "Show & Tell" session which provides so many answers for us about our glassware.

It was a weekend of familiar faces and names, famed glass writers, and fervent followers who flocked from 27 states in the effort to further friendships, knowledge, and their collections.

Our footnote would indeed recognize the foresight of our founders which has provided us with this medium for personal growth.

Our sincere thanks to each and every one of you that had a part in the creation or in the conduct of this memorable event.

*Bill*



# CAMBRIDGE CRYSTAL BALL

Official publication of National Cambridge Collectors, Inc., a non-profit corporation with tax exempt status. Published once a month for the benefit of its members. Membership is available for individual members at \$10 per year and additional members (12 years of age and residing in the same household) at \$3 ea. All members have voting rights, but only one CRYSTAL BALL will be mailed per household.

Back issues of the CRYSTAL BALL are available to members only, at a cost of 60¢ ea. or 12 issues for \$7.

## 1978-79 Officers & Committee Chairpersons

PRESIDENT ----- William C. Smith  
 VICE-PRESIDENT ----- George W. Hoffman  
 SECRETARY ----- Janice Y. Hughes  
 TREASURER ----- Ruby Landman  
 SERGEANT-AT-ARMS ----- George W. Hoffman  
 BUDGET & FINANCE ----- William C. Smith  
 BY-LAWS ----- George W. Hoffman  
 CONVENTION ----- George W. Hoffman  
 MEMBERSHIP ----- Josephine A. Barstow  
 MUSEUM ----- Arnold Lynd  
 PROGRAM & ENTERTAINMENT - Charles A. Upton  
 PROJECT -----  
 PUBLICITY ----- Don E. Armbrecht  
 STUDY GROUP ADVISORY ----- Janice Y. Hughes

1979 ANTIQUE SHOW ----- William C. Smith  
 1979 CAMBRIDGE AUCTION ----- Lynn Welker

CRYSTAL BALL Editor ----- Phyllis D. Smith

## CLASSIFIED ADVERTISING RATES

5¢ per word \$1.00 minimum

We cannot mix type size in classified advertisements. Abbreviations and initials will count as words. Payment in full must accompany all ads.

## DISPLAY ADVERTISING RATES

	Members	Non-Members
1/8 page -----	\$ 4.00	\$ 6.00
1/4 page -----	7.00	10.00
1/2 page -----	12.00	18.00
3/4 page -----	17.00	25.00
Full page -----	22.00	33.00

## DEALERS DIRECTORY

1" ad ----- \$6.00 for 6 months

Cambridge CRYSTAL BALL assumes no responsibility for items advertised and will not be responsible for error in price, description or other information.

Advertising copy must be in our hands by the 15th of each month to assure publication in our next issue. Advertisements containing reproductions will not knowingly be accepted unless clearly stated.

PLEASE ADDRESS ALL CORRESPONDENCE TO

Cambridge CRYSTAL BALL  
 National Cambridge Collectors, Inc.  
 P. O. Box #416  
 Cambridge, Ohio 43725

PLEASE NOTIFY US IMMEDIATELY OF ANY CHANGE IN YOUR ADDRESS!

Please enclose a self-addressed, stamped envelope when requesting information!!

# STUDY Club News

STUDY GROUP #5 - SOUTHERN CALIFORNIA  
 "CALIFORNIA CAMBRIDGE COLLECTORS"

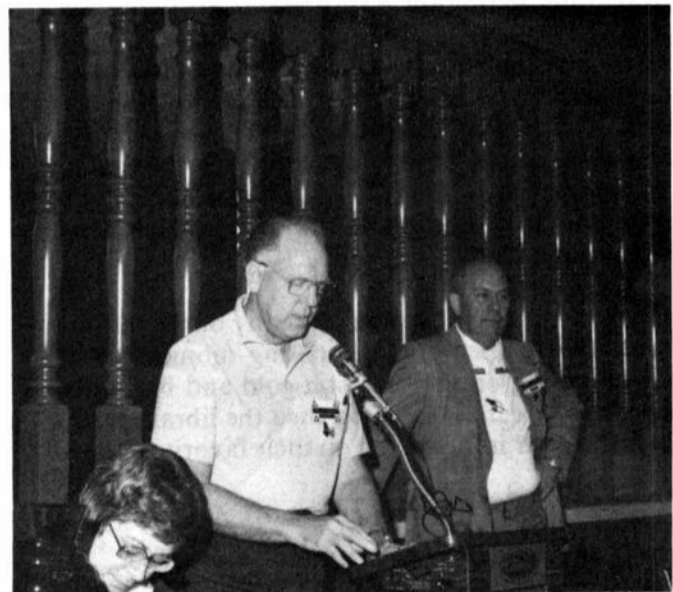
The California Cambridge Collectors Study Group met May 25th, in the home of Herb and Betty Wanser. There were eleven members and one guest present.

All members brought glass and other collectables with them that night, as we were having a silent auction with the proceeds to go to the Cambridge Museum fund. Despite the fact that attendance was rather low there were 28 items displayed for the auction. Among them was a Pristine smokers set with labels on each piece; a marked Cambridge crystal flower block; a gold encrusted Rose Point nappy; a pair of moonlight blue Star candleholders; a 2½ oz. moonlight blue wine; and other glass and collectables. All 28 items were bid for on the first round, with several ties having to be re-bid.

The end result of the auction was somewhat over \$200.00. The club had lots of fun and the Cambridge Museum fund will benefit also. The money will be delivered personally by Bill and Betty Losch at the Cambridge Convention. Hopefully four other members will also be at the Convention. Wishing we could all be there!

Due to members vacations and other obligations there will be no meeting in June.

Submitted by Paula Ashby,  
 Corresponding Secretary



BILL LOSCH presenting \$200 Check from California Collectors, during Annual Meeting.

National Cambridge Collectors, Inc.  
Statement of Operating Income and Expenses  
For the Years Ended December 31, 1978 and 1977

	<u>December 31,</u> 1978	<u>December 31,</u> 1977
Income:		
Prorated membership dues	\$ 5,437.69	\$ 3,780.72
Advertising	857.33	783.70
Sale of back issues of Crystal Ball	382.40	304.00
Other	<u>(412.05)</u>	<u>(126.92)</u>
Total income	<u>6,265.37</u>	<u>4,741.50</u>
Expenses:		
Advertising	414.23	338.19
Office supplies	312.23	56.46
Postage and box rental:		
Newsletter	1,655.06	1,049.09
Other	246.37	176.81
Printing Crystal Ball	1,212.11	976.34
Other	<u>319.52</u>	<u>206.96</u>
Total expenses	<u>4,159.52</u>	<u>2,803.85</u>
Net operating income	2,105.85	1,937.65
Beginning Operating Fund Balance	<u>3,802.27</u>	<u>1,864.62</u>
Ending Operating Fund Balance	<u>\$ 5,908.12</u>	<u>\$ 3,802.27</u>

Statement of Museum Income  
For the Years Ended December 31, 1978 and 1977

	<u>December 31,</u> 1978	<u>December 31,</u> 1977
All Cambridge Glass Auction	\$ -	\$ 735.50
Antique Show	1,419.15	1,286.70
Royalties	1,836.00	1,699.50
Book sales, net	4,002.68	1,247.29
Bookend sales	-	3,887.06
Interest	1,580.41	835.00
Donations	131.28	51.15
Other	<u>322.80</u>	<u>147.52</u>
Net income to museum fund	9,292.32	9,889.72
Beginning Museum Fund Balance	<u>19,494.83</u>	<u>9,605.11</u>
Ending Museum Fund Balance	<u>\$ 28,787.15</u>	<u>\$ 19,494.83</u>

National Cambridge Collectors, Inc.  
Comparative Balance Sheets  
At December 31, 1978 and 1977

Assets	<u>December 31, 1978</u>	<u>December 31, 1977</u>
Cash:		
Operating funds	\$ 977.36	\$ 1,503.60
Invested	35,977.58	22,897.17
	<u>36,954.94</u>	<u>24,400.77</u>
Receivables	74.86	277.13
Book inventory	1,580.99	540.03
Museum display assets	832.47	752.44
Other assets	<u>1,592.94</u>	<u>571.77</u>
Total assets	<u>\$ 41,036.20</u>	<u>\$ 26,542.14</u>
Liabilities and Members' Equity		
Accounts payable	\$ 2,795.38	\$ 629.87
Deferred membership dues	3,431.55	2,481.74
Other deferred income	<u>114.00</u>	<u>133.43</u>
Total liabilities	<u>6,340.93</u>	<u>3,245.04</u>
Members' equity:		
Operating fund	5,908.12	3,802.27
Museum fund	<u>28,787.15</u>	<u>19,494.83</u>
Total members' equity	<u>34,695.27</u>	<u>23,297.10</u>
Total liabilities and members' equity	<u>\$ 41,036.20</u>	<u>\$ 26,542.14</u>

**BY-LAWS ADDITION RECOMMENDED**

The following By-Laws addition has been recommended by the By-Laws Committee and endorsed by your Board of Directors. This addition will be presented for your vote at the next Quarterly Meeting. Time and place will be announced in the next issue of the Cambridge CRYSTAL BALL.

Now, therefore, be it Resolved, That Article VII, Section 1 (b) be amended to read as follows:

**ARTICLE VII - ELECTION OF DIRECTORS**

Section 1 (b) At the regular meeting six months prior to the annual meeting, the President shall appoint a Nominating Committee of at least three members, the chairman shall be the immediate past president, then an active member of the organization. "Should the immediate past president be unable to chair this committee, the Board of Directors shall appoint a chairperson selected from the committee."

**OFFICERS NAMED**

During the Sunday morning Board of Directors meeting, the following officers were elected for the 1979-80 year.

President . . . . Bill Smith  
Vice-President Lynn Welker  
Secretary . . . . Janice Hughes  
Treasurer . . . . Ruby Landman

Results of our recent election of members to our Board of Directors was announced at the Saturday morning breakfast. Re-elected were: Janice Hughes, Ruby Landman and Lynn Welker.

Committee Chairperson appointments will be announced by President Smith at a later date.

*"Tact is leaving unsaid the wrong thing at the tempting moment."* ELLIOT JACKSON

# OBSERVATIONS AND IMPRESSIONS

by Ann Kerr

Photos by Dave Rankin

The 6th Annual Convention and the 4th Annual Antique Show & Sale sponsored by the National Cambridge Collectors, Inc., were both 1st Annual events for me. It is with pleasure that I have been asked to share my impressions and observations with you.



First the Show. Elegant glass, Cambridge of course, elegantly displayed in that lovely room. It was overwhelming to all but the most seasoned collector who knew exactly what he wanted - and surely he found it there! But for those who were starting collections, the offering was so great as to really overcome one. The Duncan-Miller, Heisey and Fostoria were also lovely, and I found it most interesting that some Art Pottery (particularly the Cambridge Art Pottery) and even silver had found its way there. They all made a most interesting addition to the Show.

The accommodations at the Shenandoah Inn were great! In fact, I talked to many who were pleasantly surprised. The name "truck stop" and even the appearance had put some of us off, but I heard nothing but good comments about it once we were "in and settled". I wished for a door-bolt or chain as I was alone, and I could imagine those with expensive purchases might have liked that too, but that's not likely to be a needed addition for the management. The food was outstanding, with tasteful, abundant portions, served to us both quickly and courteously.

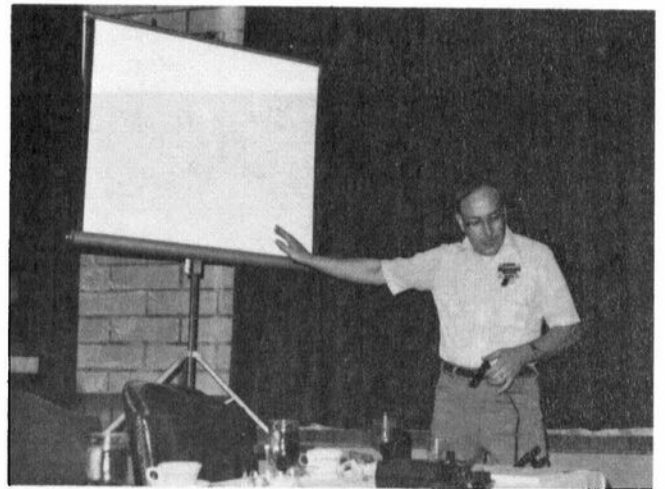
It is my understanding that the presentation on "Cambridge Blues" given by Dave Rankin at the Saturday morning breakfast will be presented in a series of articles beginning in the August issue of the CRYSTAL BALL. Therefore I will not even try to go into any detail, except to say that I found this to be the most helpful of the sessions held during the weekend. Since the general public seems to have trouble over the confusion in colors, I feel sure this series of articles will be of help to all who are confused by the many Cambridge Blues.

The seminar on Cambridge Stems, presented to us by Frank Wollenhaupt, was extremely interesting. In as much as stem shape plays such a big part in identification, this was a really wise choice of program to present. I haven't had time to go thru my notes on it yet, but I am sure there are lots of facts that I am going to want to pencil into my catalogues.

The presentation on Cambridge Candlesticks given by Lynn Welker was equally valuable. I, somehow, didn't realize (in spite of owning all of the published books) that the production of Cambridge candlesticks was a large as it was. Presented chronologically from the early plainware thru the ornate patterned, to table architecture, it was my feeling that Lynn went the "extra mile" by telling us what colors each could be found in and by giving tips such as "buy one if you can find it" or "even a chipped one is a find". He also furnished us with the dates pieces were produced, and added a lot to what has been published. It is my feeling that he just can't be surpassed in the depth of his knowledge and it was a real learning session.

It is my understanding that both of these slide presentations are available for a reasonable rental fee, and my opinion that they would be valuable to our members all across the country who are unable to attend meetings here in Ohio. They are, of course, available FREE of charge, for use by affiliated NCC Study Groups.

The Display Room was elegant, of course, and I met people who went back again and again. One woman whose husband was eager to be on the road said she had to have "one more look", almost like leaving the promised land! The yellow and black colors were lovely and the smallness of the room allowed an intimacy for study that could not have been achieved otherwise.



DAVE RANKIN explaining our "blues"

continued on page 8



**WILLIAM HEACOCK, BILL SMITH, GWEN and BILLY SHUMPERT**



**HILDA NIESS and EDITH ZIMMERMAN from Illinois**



**MARY and WILBUR HENDERSON, Woodsfield, Ohio**



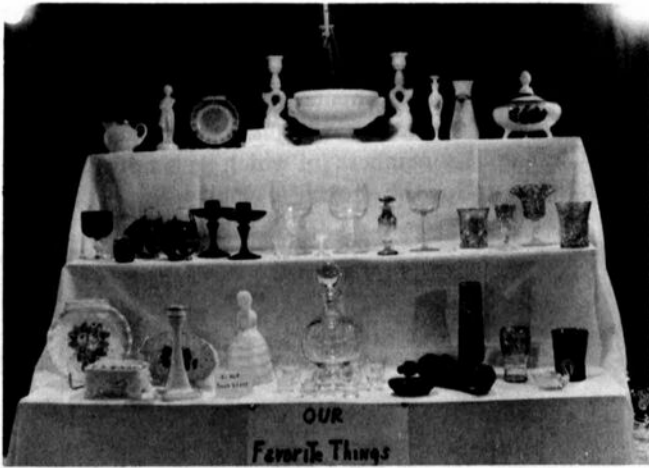
**DOROTHEA and ARNOLD LYND, Pataskala, Ohio**



**LARRY and JANICE HUGHES, Cambridge Ohio**



**LYNN WELKER - "Showing & Telling"**



Display Room



EBONY



EBONY WITH HAND PAINTED DECORATION



EBON



MANDARIN GOLD



SMOKE

GOLD KRYSTOL



**CRYSTAL DECORATED WITH GOLD**

I was surprised at the steady stream of people in the "Research Room" and felt I must be missing something by not spending more time there. Mr. Charles Upton assured me it was all "in the books", so I was even more surprised that such serious researchers hadn't availed themselves of these important catalogs. I hope I didn't miss something there, but I took Mr. Upton's word for it that I had it all.



**CHARLES and MARY ALICE UPTON, Cambridge, Ohio**



**Banquet Speaker WILLIAM HEACOCK and Convention Chairman GEORGE HOFFMAN**

The dinner meeting Saturday evening could not have been nicer. The tables were decorated beautifully and the paper-weight table favors were prized by all. I am sure we all found William Heacock to be a great speaker. His speech was not long in length, but he made up for that with his charm! Since we all like someone who likes us, his high praise for the Club and its members (of which he is now one), more than made up for the shortness of his talk.



**Our Greeters! LEN and MARGE WEINBERG from New York**

Who was there? Well, really, I felt that all of the serious collectors were. I may have missed some faces, but I met dealers, advanced collectors and novices, and heard only praise from them all. There were a good number of writers besides myself such as, Betty Losch from California, Glenita Stearns from Washington, Gwen Shumpert from Mississippi, and Gail Krause from Pennsylvania. They were all adding to their collections also! In fact, one writer walked away from the area with the "prize" as far as I was concerned. She wouldn't give details, but she found a Mannequin Head!

Reports given during the Sunday morning Annual Meeting, indicating the growth in membership, finances, etc., are all proof of the great job the officers are doing. I felt, from a personal visit with Mr. Arnold Lynd, Chairman of the Museum Committee, that he feels there may be good news there before long - and that will be **GOOD NEWS!**

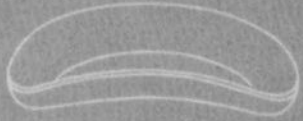
I hope that everyone had the good experience I had of meeting so many people, getting to know old acquaintances better, and feeling so generally "welcome" as a part of the group. Everyone seemed to go out of their way to make me feel a part of all that went on, and I hope others came away with the same feeling. I've really been sincere when writing articles and expressing my feelings concerning what a "great group this is".

---

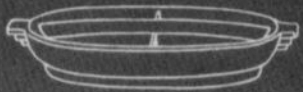
**Editor's Note:** Ann is a writer for the **OBSSESSION IN DEPRESSION**, the **GLASS REVIEW**, and **THE GLAZE**, and we very much appreciate her sharing her "thoughts" with us!



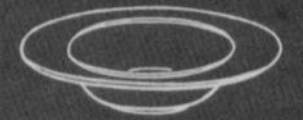
# Pristine



No. P-454 — CRESCENT SALAD PLATE



No. P-212 — 10" 5-PART  
CELERY & RELISH TRAY



No. P-466 — 6 1/2" BAKED APPLE

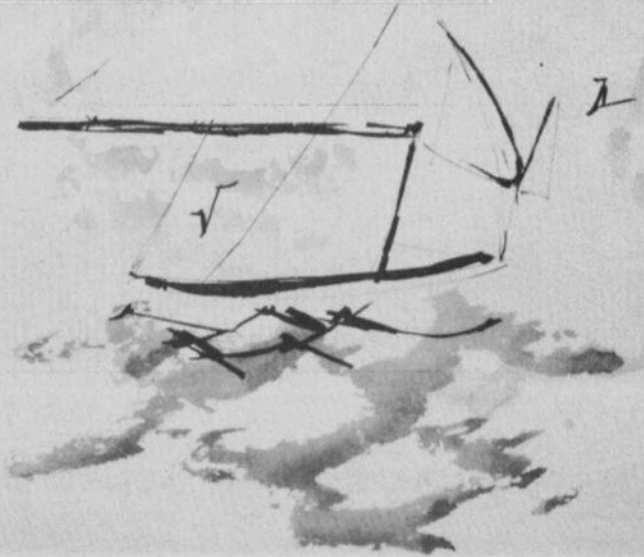


No. P-1498 — 2" 3-PART RELISH



No. P-604 — 8" BUD VASE

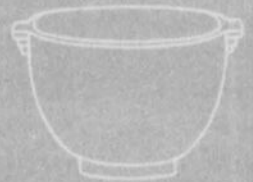
No. P-101  
33 OZ. COCKTAIL SHAKER



# Pristine



No. P-15 - 6 OZ. PUNCH CUP



No. P-071 - ICE TUB



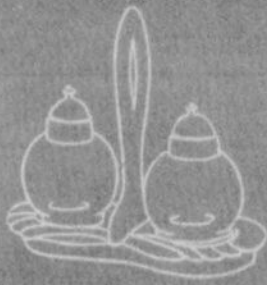
No. P-486 - 5 OZ. PUNCH CUP



No. P-076 - 180/180  
18-PIECE PUNCH SET



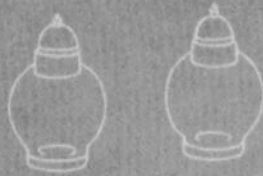
THE CAMBRIDGE GLASS COMPANY, CAMBRIDGE, OHIO, U. S. A.



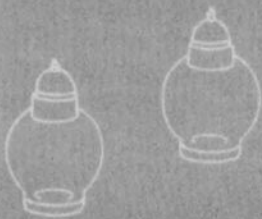
No. P-361  
3-PIECE SALT & PEPPER SET



No. P-151  
3 OZ. MUSTARD & COVER



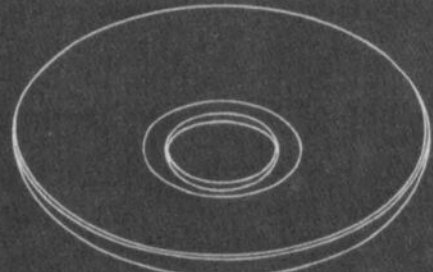
No. P-358  
IND. SALT & PEPPER



No. P-360 — SALT & PEPPER



No. P-147  
8 OZ. MARMALADE & COVER



No. P-126 — 13 1/2" GARDENIA BOWL



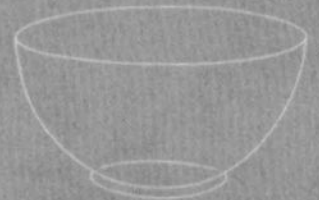
No. P-298  
MARMALADE & COVER



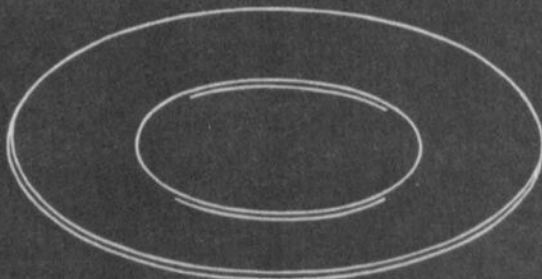
No. P-252  
IND. SUGAR & CREAM



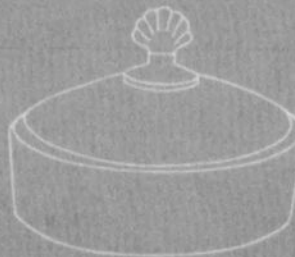
No. P-254 — SUGAR & CREAM



No. P-476  
11 1/2" PUNCH BOWL



No. P-170 — 18" PLATE



No. P-103 — 3-COMPARTMENT  
CANDY BOX & COVER



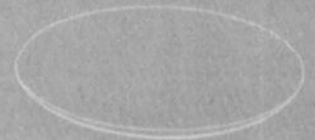
No. P-431 — 12" BOWL



No. P-1397  
13 1/2" CABARET PLATE



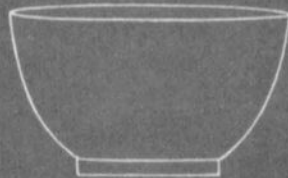
No. P-563  
6" SHARP CRIMPED VASE



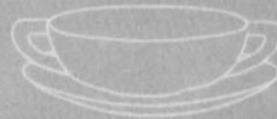
No. P-130 - 14" BLOWN PLATE



No. P-286 - 2-PART SALAD  
DRESSING BOWL, 2 LADLES



No. P-427 - 10" BOWL



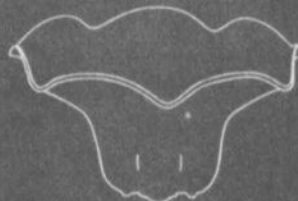
No. P-922  
CREAM SOUP AND SAUCER



No. P-1495  
11 1/2" CAKE PLATE



No. P-565 - CRIMPED VASE



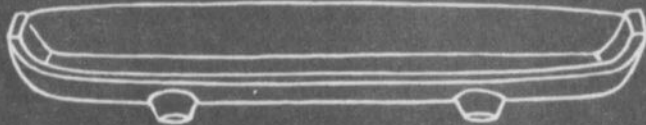
No. P-569 - 9" CRIMPED VASE



No. P-430 - 12" BELLED BOWL



No. 3700 - 5" COMFORT



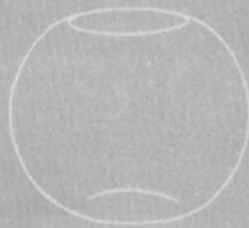
No. P-477 - 9 1/2" CORN DISH



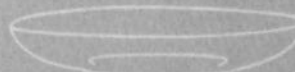
No. P-495  
3 3/4" CANDLESTICK, SQ.



No. P-493  
2 1/4" CANDLESTICK, SQ.



No. P-1410 - 6" ROSE BOWL



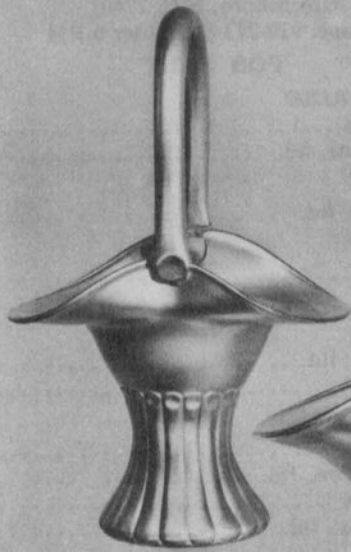
No. P-247 - 11 1/2" CELERY



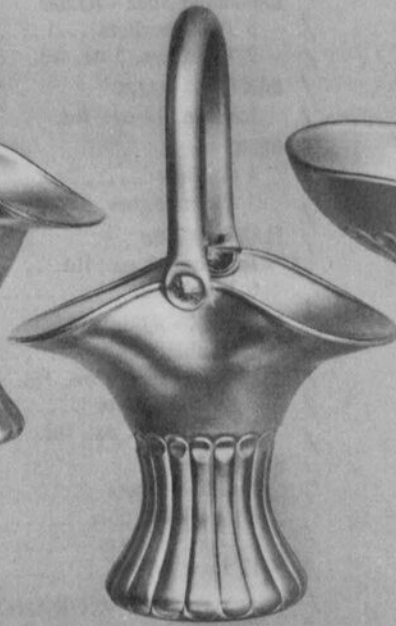
No. P-492  
1 1/2" CANDLESTICK, SQUARE



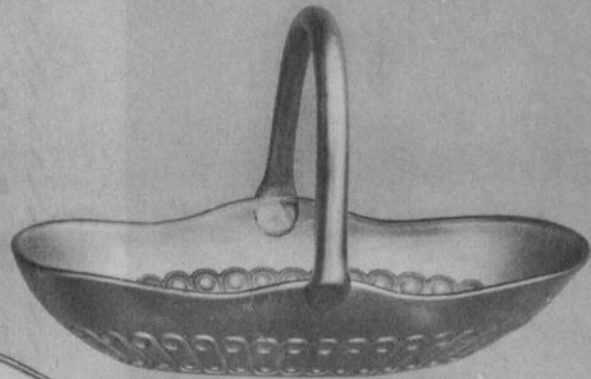
THE CAMBRIDGE GLASS COMPANY, CAMBRIDGE, OHIO, U. S. A.



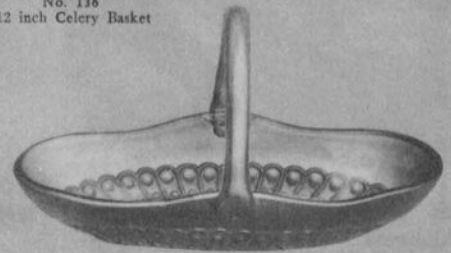
No. 126  
6 inch Flower Basket



No. 127  
8 inch Flower Basket



No. 136  
12 inch Celery Basket



No. 137  
9 inch Celery Basket



No. 138. 5½ inch  
Covered Jam Dish



No. 139  
5½ inch Covered Comport



No. 140  
5½ inch Covered Candy Box



No. 141  
6½ inch Covered Candy Bowl



No. 142  
4½ inch Covered Candy Bowl

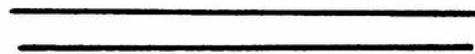


No. 143  
4 inch Covered Candy Bowl





Our youngest Conventioneers, The **VEACH's** from Oklahoma



**ROBERT L. PAGE**

417 S. Edgeworth St.  
Greensboro, N.C. 27401  
Phone: 919-273-8085 after 6 PM

**FOR SALE**

- CAMBRIDGE ROSE - #3700**
- 3 Tall Sherbets ..... \$ 6.00
- 2 Tumblers, 5 oz. ftd. .... 6.00
- DAFFODIL - #3779**
- Ice Tea, 12 oz., ftd. .... 10.00
- DORIC**
- 4 Goblets ..... 7.00
- 3 Champagnes ..... 6.00
- FLAME - #7966**
- Ice Tea, 12 oz., ftd. .... 8.00
- 6 Juice, 6 oz. .... 6.00
- LYNBROOK - #3790**
- 12 Goblets ..... 8.00
- 12 Tumblers, 5 oz., ftd. .... 6.00
- 2 Low Sherbets ..... 6.00
- 3 Ice Tea, 12 oz., ftd. .... 8.00
- RONDO (cut)**
- 2 Low Goblets ..... 8.00
- 3 Low Cocktails ..... 6.00
- 8 Low Sherbets ..... 6.00
- 12 Low Wines ..... 6.00

**POSTAGE & INSURANCE EXTRA! — PRICES EACH!**  
*Send SASE Please*

**ERIE'S FIRST ANNUAL  
GLASS SHOW and SALE**



**FEATURING  
Cambridge, Duncan & Miller, Heisey  
AND INCLUDING  
GLASS OF ALL PERIODS**

**AUGUST 25 & 26, 1979**  
SAT. 1 p.m. to 9 p.m. - SUN Noon to 6 p.m.

**FOSTORIA** HILTON HOTEL • ERIE, PA.  
10th & State Streets  
[I-90 Exit 6 • 6 Miles North on Peach Street]



ADMISSION - \$1.75 • 25¢ DISCOUNT WITH THIS AD.  
CHILDREN UNDER 12 YEARS - FREE  
Door Prize Each Day

PROMOTION BY: Hank Pugliese - 814-456-7131

**— Classified —**

**FOR SALE:** #3011 STATUESQUE, 6 1oz. Brandy's (moonlight, ritz, mandarin, emerald, amethyst, pistachio); 6 3oz. Cocktail's (peachblo, pistachio, amber, ritz (2), ebony w/crystal bowl). \$58.50 ea. plus postage, insurance. Vicki Harman, 321 Acacia Pl., Escondido, CA 92026.

**WILL TRADE:** CAMBRIDGE, 145 pieces, for equal value moonlight blue Caprice. Cups, saucers, plates, tumblers, stems, tall comport, candy box, coasters. For list write: C. P. Stoker, 318 North Ave., Plain City, OH 43064.

**WANTED:** CAMBRIDGE "SPRINGTIME". One piece, 10" frosted Vase, #1252 Orchid motiff, crystal or pastel. Write: B. Owens, 1112 Highedge Dr., Plano, Texas 75075. Phone 214-596-9459 after 5 PM.

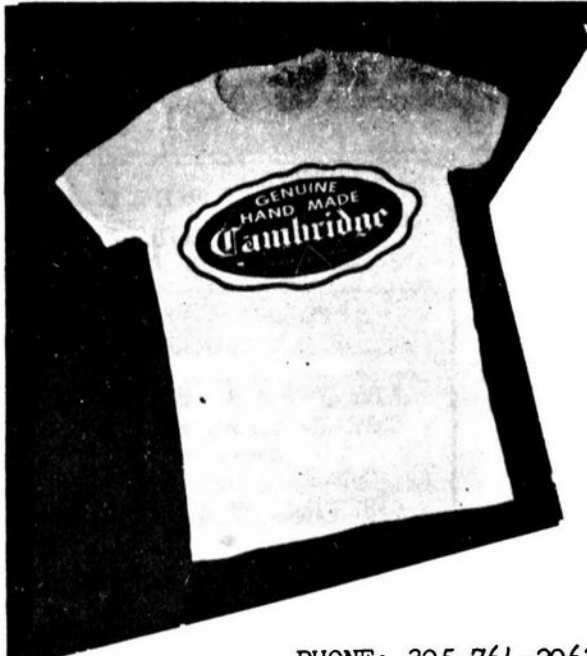
*"To me—old age is 15 years older than I am."*  
BERNARD M. BARUCH

# DEALERS



# DIRECTORY

<p><b>ANTIQUÉ ALLEY</b> 24815 Broadway Bedford, Ohio 44146 216-232-7739 ---- Marie Spagnola CAMBRIDGE GLASS ROYAL DOULTON</p>	<p><b>BENICIA ANTIQUE SHOP</b> 305 First Street Benicia, California 94510 OPEN 11 AM - 5 PM Closed Monday</p>	<p><b>CHARLES MIKULIK</b> Box 416 Elizabeth, N. J. 07207 Phone 201-372-1101 BY APPOINTMENT ONLY!</p>
<p><b>CHURCH STREET ANTIQUES</b> 6 Church Street Boston, Massachusetts 02116 George or Frank --- 617-426-1048 CAMBRIDGE, HEISEY, GENERAL LINE</p>	<p><b>Z. E. LOPES - 707-745-0978</b> VISIT HISTORIC BENICIA and its 28 shops Off Interstate #80 ----- ----- North of San Francisco</p>	<p>Always buying CAMBRIDGE BLUE CAPRICE in blown or unusual pieces only.  CARRY MOST TYPES OF ANTIQUES</p>
<p><b>D &amp; D ANTIQUES</b> 184 East Kossuth Street (GERMAN VILLAGE) Columbus, Ohio 43206 DICK SLIFKO ----- 614-443-6020</p>	<p><b>GREEN ACRES FARM</b> 2678 Hazelton Etna Rd., SW Pataskala, Ohio 43062 (SR 310 North) Sat. &amp; Sun. 1-6 PM ---- W. Bryan CAMBRIDGE &amp; HEISEY - 614-927-1882</p>	<p><b>FINDER'S KEEPER'S ANTIQUES</b> P.O. Box 303                      P.O. Box 16023 Dayton, O.                      Columbus, O. 45401                                      43216 513-254-2937                      614-885-2726 SPECIALIZING IN CAMBRIDGE GLASS!</p>
<p><b>SWISS HILLS COLLECTIBLES</b> Mary &amp; Wilbur Henderson 303 Guilford Avenue Woodsfield, Ohio 43793 Mail &amp; Shows --- 614-472-1133 SPECIALIZING IN CAMBRIDGE GLASS!</p>	<p><b>THE MOUSE HOUSE ANTIQUES</b> Route 22 East Cambridge, Ohio 43725 Shirlee Bistor --- 614-432-3132 SPECIALIZING IN GLASSWARE!</p>	<p><b>HOBBY HOUSE ANTIQUES</b> Rt. #1, Cambridge, Ohio - 43725 614-432-6971 -- Lena Barnes Take Rt. #209 W. From Cambridge To Rt. #658 - NORTH 1½ MILES</p>
<p><b>BLACK ROOSTER ANTIQUES</b> 1018 Clark Street Cambridge, Ohio 43725 614-432-3202 ----- M. Sipe CAMBRIDGE GLASS - GENERAL LINE</p>	<p><b>GEORGE HOFFMAN ANTIQUES</b> 129 South 4th Street Newark, Ohio 43055 --- 614-345-8550 ---</p>	<p><b>D'MARIE'S ANTIQUES</b> US Rt. 1 - just South of Rt. 606 Thornburg, Virginia 22565 703-582-6220 ----- Jim Rankin OPEN EVERY DAY 10 AM to 6 PM</p>
<p><b>'OUR GLASS ANTIQUES</b> Box 27, Wills Point, Tex. 75169 20th CENTURY COLLECTIBLES fea- turing CAMBRIDGE GLASS! Shows- No Lists - SASE Please - PAUL &amp; GINNY HENDERSON -- 214-563-6971</p>	<p><b>OLD TOLL GATE ANTIQUES</b> 600 North Avenue Milan, Illinois 61264 SPECIALIZING IN HAVILAND CHINA MATCHING SERVICE</p>	<p><b>OLDE TOWNE ANTIQUES</b> 307 W. St. Louis Street Lebanon, Illinois 62254 Edith Zimmerman -- 618-537-4567 GENERAL LINE ANTIQUES</p>
<p><b>ROBERT PAGE</b> 417 S. Edgeworth St. Greensboro, N.C. 27401 SPECIALIZING IN DISCONTINUED CRYSTAL! 919-273-8085 after 6PM</p>	<p>Use Schlegers book numbers or send saucer for pattern match. SASE APPRECIATED Marie Baker ----- 309-787-2392 GENERAL LINE OF ANTIQUES</p>	<p><b>BILL &amp; SHARON PHILLIPS</b> 21730 Friday Euclid, Ohio 44123 Ph. 216-261-4665 ---- Shows Only BUYING GLASS, ANTIQUES, ETC.</p>
<p><b>1886 HOUSE</b> East Schodack, N. Y. 12063 MAIL and SHOWS Laurie Cruise - 518-477-5895 CAMBRIDGE-NORITAKE-AZALEA-D.G.</p>	<p><b>THE GLASS CUPBOARD</b> 39 Shire Oaks Drive Pittsford, New York 14534 Marcia Ellis                      716-586-7596 CAMBRIDGE ONLY --- SASE FOR LIST</p>	<p><b>M &amp; M ANTIQUES &amp; COLLECTIBLES</b> 310 N. Main - Box 417 Canton, Kansas 67428 The Martin's ----- 316-628-4705 SPECIALIZING IN CAMBRIDGE GLASS!</p>
<p><b>COYLE &amp; SCHUSTER ANTIQUES</b> Box 982 --- Ph. 614-349-7362 Newark, Ohio 43055 Shows &amp; Mail Order BUY &amp; SELL --- CAMBRIDGE - HEISEY</p>	<p><b>EVELYN M. ALLEN</b> 135 Cynthia Street Heath, Ohio 43055 Mail Order &amp; Shows 614-522-1635 SPECIALIZING IN CAMBRIDGE GLASS!</p>	<p><b>LASHER ASSOCIATES</b> 119 Water St. Gaithersburg, Md. 20760 Faith Lasher ----- 301-977-8296 SPECIALIZING IN GLASSWARE</p>



# T Shirts by Brandt

AN IDEAL GIFT FOR THE CAMBRIDGE COLLECTOR  
A YELLOW T-SHIRT WITH A BLACK CAMBRIDGE SEAL!

FIRST QUALITY — SPECIAL \$7.50 each  
(includes postage and handling)

The T-Shirt you saw at the Cambridge  
Convention is now available in men's and  
women's sizes!

PHONE: 305-764-2063

ORDER NOW: Send your check or money order (\$7.50 for each shirt) to:

T-Shirts by Brandt, 1305 N. W. 1st Avenue, Fort Lauderdale, Florida 33311

Please specify size when ordering: WOMEN: sm., med., lg. MEN: med., lg., x-lg.

## NOTICE

If your June issue of the CRYSTAL BALL (or any issue) contained a **blank** page, this was a printing error and not intentional.

Please let us know of any blank pages and we will send you the correct page or a complete issue.

We are sorry for any inconvenience, but errors do happen. A blank page is never **intentional** in the CRYSTAL BALL.

National Cambridge Collectors, Inc.  
P.O. Box #416  
Cambridge, Ohio 43725

FIRST-CLASS MAIL  
U.S. POSTAGE  
**PAID**  
So. Vienna, Ohio  
45369  
Permit No. 15

**FIRST CLASS MAIL**

---

## WE ARE TRYING SOMETHING NEW THIS MONTH!

At least a portion of this issue is being typeset.  
Let us know how you like it.

---

WE ARE SORRY TO BE LATE WITH THIS ISSUE BUT WE WANTED TO INCLUDE CONVENTION COVERAGE!