

Cambridge



Crystal Ball

ISSUE NO. 91

NOVEMBER 1980

Published monthly by the NATIONAL CAMBRIDGE COLLECTORS, Inc.
To encourage and to report the discovery of the elegant and boundless product
of the Cambridge Glass Company, Cambridge, Ohio

Thoughts from the President - - - -

As the deadline for this article arrived, and I couldn't think of anything to write about, I thought I would take the cowardly way out and maybe break my hunt and peck typing finger so I wouldn't have to write anything. Well, as my luck would have it, I not only forgot that I was right handed, but I missed and mangled my thumb on my left hand. No luck at all!

This is a beautiful time of the year around here as Mother Nature is well on her way to giving us another leaf painting extravaganza. I was up in Pennsylvania this morning to my favorite glass hunting grounds and although I found some goodies, they were overshadowed by the beautiful fall scenery that the area is noted for. I know that most of you also get out and enjoy this time of year. This is probably the only time of the year that we Northerners don't envy all you people that live in year around warm climates. Take heart though, because in about two months we'll really envy you.

We are getting back on line again now after the change over of most of the officers and some of the directors. Not that we have changed our aims or anything else, most of our efforts still being in the direction of providing you with a Museum of some sort. Bill is all but finished with changing the bookkeeping system to a new one that will make it easier for Dave and Sue Rankin to do our audit. Jo Barstow is well on her way to organizing our most successful Convention ever, Jan is busy with her normal duties plus cleaning out our files, doing away with outdated and unneeded material

and the committees are all working diligently on their projects.

We need any help that you can give us in all areas but there is one that I want to mention again specifically: THE CRYSTAL BALL. I think most of us probably realize that Phyllis, as Editor, spends a lot of time getting the CRYSTAL BALL out to us. We are guilty of making her job more difficult by not giving her anything to put together. This is our only means of mass communication within the club and it is certainly the backbone of the club.

I can't think of anything that anyone could write about that wouldn't be of interest to someone, at some time. You all go to flea markets, auctions, antique shops or wherever, and buy glass. Why not write about your experiences and share them with other members. No matter how minor some of your experiences or ideas seem to you, someone will probably learn something from them.

The same goes for answers you are looking for. Don't be afraid that your question may sound ridiculous. We all crawled before we walked! A lot of you have information about Cambridge Glass that probably doesn't seem important to you, but it could be especially important to our newer members. All of you write letters, writing an article is no different. You don't have to type it, you can write it in longhand. Phyllis is the editor and part of the editor's duties is to make information into a readable article — she is always willing to do this!

Have a good month, seek out and buy Cambridge Glass, and I hope to see many new names appearing after articles in the CRYSTAL BALL.

MEMBERSHIP RENEWAL NOTICE	
If the date on your address label is --	11 - 80
This is your LAST ISSUE of the CRYSTAL BALL.	
Please renew NOW!	

CAMBRIDGE CRYSTAL BALL

Official publication of National Cambridge Collectors, Inc., a non-profit corporation with tax exempt status. Published once a month for the benefit of its members. Back issues of the CRYSTAL BALL are available to members only, at a cost of 60¢ each or 12 issues for \$7.

Membership is available for individual members at \$10 per year and additional members (12 years of age and residing in the same household) at \$3 ea. All members have voting rights, but only one CRYSTAL BALL will be mailed per household.

1980-81 OFFICERS & COMMITTEE CHAIRPERSONS

PRESIDENT	Willard Kolb
VICE-PRESIDENT	Josephine Barstow
SECRETARY	Janice Hughes
TREASURER	William Smith
SERGEANT-AT-ARMS	Don Armbrecht
ASSISTANT SECRETARY	Susan Rankin
BOOK SALES	Reba Embree
BUDGET & FINANCE	David Rankin
BY-LAWS	David Rankin
CONVENTION	Josephine Barstow
MEMBERSHIP	Josephine Barstow
MEMBERSHIP ASSISTANT	Brenda Harbaugh
MUSEUM	William Harbaugh
MUSEUM CURATOR	Charles Upton
PROGRAM & ENTERTAINMENT	Frank Wollenhaupt
PROJECT	Willard Kolb
PUBLIC RELATIONS	William Smith
PUBLICITY	Joseph Andrejcek
STUDY GROUP ADVISORY	Jack Rettig
1981 ALL-CAMBRIDGE AUCTION	Lynn Welker
1981 ANTIQUE SHOW	Charles Upton
CRYSTAL BALL EDITOR	Phyllis Smith

CLASSIFIED ADVERTISING RATES

5¢ per word \$1.00 minimum
We cannot mix type size in classified advertisements. Abbreviations and initials will count as words. Payment in full MUST accompany all ads.

DISPLAY ADVERTISING RATES

	Members	Non-Members
1/8 page	\$ 4.00	\$ 6.00
1/4 page	7.00	10.00
1/2 page	12.00	18.00
3/4 page	17.00	25.00
Full page	22.00	33.00

DEALERS DIRECTORY

1" ad \$6.00 for 6 months
Cambridge CRYSTAL BALL assumes no responsibility for items advertised and will not be responsible for error in price, description or other information.

Advertising copy must be in our hands by the 15th of each month to assure publication in our next issue. Advertisements containing reproductions will not knowingly be accepted unless clearly stated.

PLEASE ADDRESS ALL CORRESPONDENCE TO
CAMBRIDGE CRYSTAL BALL
National Cambridge Collectors, Inc.

P.O. Box #416
Cambridge, Ohio 43725

PLEASE NOTIFY US IMMEDIATELY OF ANY CHANGE
IN YOUR ADDRESS!

Please enclose a self-addressed, stamped envelope
when requesting information!!

STUDY Club News

STUDY GROUP #6 - NEW YORK STATE "THE FINGERLAKES"

The Finger Lakes Study Group met at 12 noon, August 24th, at the home of Don and Shirley Ladouceur in North Syracuse, NY. A short business meeting was held to plan our second year's activities.

We organized an agenda for our next five meetings through Spring 1981. We are planning to use the NCC color slides, along with programs on Trademarks and the major lines.

A program on Cambridge Baskets was presented by Shirley Ladouceur, and 14 baskets were on hand for our examination. Included in the display were: Four Lines; Plymouth, Community, squat Buzz Saw; squat and arch foot Daisy; Wheat Sheaf; Novelty #1506/1; a rare smoke Georgian; #3900/55, 2 hdd., 6" etched Rose Point; 2 hdd., flat basket in ebony; and several in opaque colors. In all, we studied 29 basket styles, using back issues of the CRYSTAL BALL and NCC Catalog Reprints as references.

Our next meeting will be held on Sunday, September 21st, in Rochester, NY. Our Program will be on Cambridge Reproductions.

submitted by Shirley Ladouceur

On September 21st, the Finger Lakes Study Club held its first meeting of the Group's second year of existence, at the home of Bob and Marcia Ellis. Due to a last minute change in program, it was decided we would do a little "marketing analysis" of the local Antique Shops.

Later in the day, a dinner out replenished our strength levels, also further depleted our financial levels! With minds once more alert, we returned to the Ellis home to conduct our "Show & Tell" from purchases made during the day. There was a crystal Shell sugar & creamer; ebony Sweet Pea vase with gold border etch; royal blue Gadroon handled basket; and a Marjorie Nearcut cruet, just to mention a few of our better finds of the day.

We have been working on assembling notes into book form for ready reference material, and at our October meeting, we will be doing a program on reproductions, reissues, etc., accumulated from the CRYSTAL BALL's and information accumulated at Conventions.

Our October meeting will be held on the 26th in Pittsford, NY, at the home of Bob and Marcia Ellis.

submitted by Marcia Ellis

continued on page 8

“Little Things”

by Doris Isaacs

When it comes to collecting creamers and sugars, we think the little individual sets make nice additions to any collection. We would like to share three such sets with you this month.

This individual set shown in Photo #1, is in the #3300 line. This set is in pink and is marked with the C in a triangle.



PHOTO #1

Photo #2 shows the blown Pristine #250 individual set in crystal. The creamer has an applied handle and the flat bottoms of both pieces are beautifully polished. This set came from a worker's home and is not an easy set to find.



PHOTO #2

The individual Martha Washington set in Photo #3, is shown in milk glass. As you can see, the sugar has the original label still intact.

Since this is the month when we all turn our thoughts to “turkey”, may I suggest (especially to our newer members)



PHOTO #3

that you study the articles that have appeared in the CRYSTAL BALL concerning the Cambridge Turkey before making a purchase. Articles have appeared in CRYSTAL BALL back issues #10, #38, #44, #64 and #79 telling you how to distinguish the Cambridge Turkey from all the others!

Best Wishes for a very Happy Thanksgiving!

ARNOLD LYND RESIGNS BOARD

by Phyllis Smith

It was with regret that President Kolb announced the resignation of Arnold Lynd from our Board of Directors, during the August Quarterly Meeting. Stating “personal reasons” for his resignation, Arnold has recently retired from his fruit business, and now spends many months each year in Florida. He felt he could no longer devote the time required of a member of our Board, and therefore felt he should step down.

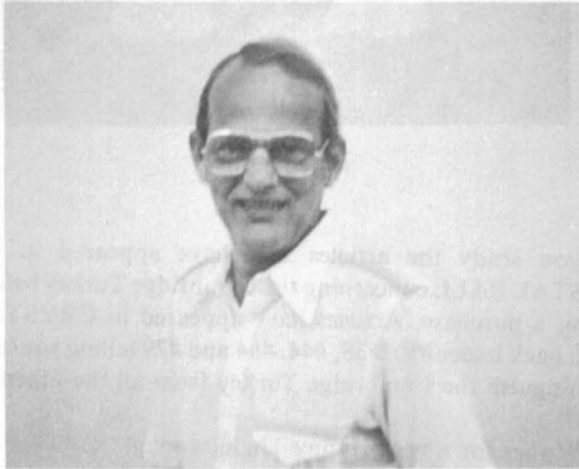
Arnold was elected to the Board of Directors in June 1977, and has been a member of NCC since its beginning in May, 1973. He served as Museum Chairman from June '77 thru June '80. During this time he explored many avenues and presented numerous propositions to the Board, which ultimately led to our recent acquisition (March '80) of property, which will eventually lead us to our Museum.

NCC members and Board members alike regret Arnold's resignation and wish to express “THANKS” for all the time and effort he has devoted to NCC. We wish he and his wife Dorothea much happiness in their retirement, and will look forward to seeing them both at Convention time and any other time they are in Ohio and can attend our Quarterly meetings. Your efforts have been very much appreciated, Arnold!

LET'S GET ACQUAINTED

by Phyllis Smith

Another new member has been recently appointed to serve on our Board of Directors, and we would like, at this time, to better acquaint you with William J. Turner.



William J. Turner

Bill's appointment was announced by our President Willard Kolb, during the August Quarterly Meeting, and fills the vacancy created by the recent resignation of Arnold Lynd. Bill will serve out the remainder of Arnold's term which will end in 1981.

In March, 1975, Bill and his wife Meg became members of N.C.C. and have offered their services whenever possible. Living in Stone Mountain, GA, until November 1979, has made it rather difficult to participate as they would have liked, but both Bill and Meg have helped by working on Registration and Display Room Committees during our Conventions. Since moving back to the Cambridge area, they have become members of the Cambridge Squares Study Group and are active in NCC in every way possible.

The Turner's presently reside in Zanesville, OH, where Bill is employed as Manager of Lee Jewelers and Meg works as his assistant. Married for 25 years, they are the parents of three children. Their eldest daughter Vivian is 23, married, and living in Corpus Christi, TX. Their only son, Scott is 19 years old, and their younger daughter Megan is 9.

Bill was born October 20, 1933 in Bellefontaine, OH. He graduated from High School in Springfield, OH, in 1951, and attended both Ohio University and Ohio Northern University. He served in the Air Force for four years, and was employed in Technical Sales, for Union Chemical Division of Union Oil Company of California, before accepting his present employment position. He is interested in do-it-yourself projects and also likes to hunt.

Besides his membership in NCC and the Cambridge Squares

Study Group, Bill is also a member of the Elks Club, and the First Baptist Church, Cambridge, OH. While living in Georgia, he served as a Lay Leader, member of the Board of Deacons, and on various other Boards, as a member of the Mountain Chapel Methodist Church.

Prior to moving to Georgia in 1972, the Turners had lived in Cambridge, OH, for twelve years, but did not own a piece of Cambridge Glass. Friends gave them their first piece, as a "going away" gift when they moved. They have been collecting Cambridge Glass since, and now have in the neighborhood of 200 pieces. Their main interest is in 3" Swans, but they also collect Feather pattern Nearcut, and most other pieces which they find attractive. They say that they are "constantly looking for unusual and rare pieces".

Bill says that he has always wanted to be more active with this Club and now he has been given the opportunity to fulfill that desire. He hopes that with his background in business and committee activities, that he will be an asset to the Club. With this type attitude, it is apparent that he should be an excellent addition to our Board of Directors.

CHRISTMAS GREETING FUN!

Don't miss out — for the price of \$1, you can send Christmas Greetings to all your NCC friends. In 20 words or less, you can send your very own personal "Greeting" to be included in our GIANT CHRISTMAS CARD!

The deadline is November 10th - so send us your message right away! You'll be sorry if you miss out on this "fun" Project.

SORRY ABOUT THE ERRORS!

The October issue of the CRYSTAL BALL contained some errors of which we would like to apologize. First of all on page 14, the 1/4 page ad in the upper right hand corner had our advertisers name misspelled. She has not complained, but we do want to let you all know that she is RONELLE LYNG - not LYND, as we have it!

Also we hope we have not caused any problems for any of our members by listing our Auction date wrong in both the September & October issues. There was little mix-up and the Auction date had to be changed. The correct date is FEBRUARY 28th. The February Quarterly Meeting will be held the evening preceding the Auction on FEBRUARY 27th.

Cambridge Muddlers

by Henry Ziegler
New Britain, CT

After the repeal of Prohibition, Cambridge like many other companies, hopped on the band wagon and began producing a large selection of barware. One of the more popular drinks of the 30's was an "Old-Fashioned" which consisted of whiskey, water, sugar, bitters, and pieces of sliced orange and/or lemon and a maraschino cherry. A cube of sugar and bitters were placed in the proper indentation in the bottom of the old-fashioned glass and "muddled" with a glass or wooden muddler. The muddler was left in the old-fashioned glass and served.

Cambridge muddlers were mold formed. The Company made three styles which are pictured on Page 21 of "The Cambridge Glass Company" reprint of parts of the Old Company Catalogs Book II by Mary, Lyle, and Lynn Welker.

Muddlers usually measure four to five and a quarter inches long and are approximately one-quarter of an inch thick. Muddlers are sometimes mistaken for pestals, and sometimes for knife rests. They should not be confused with swizzle sticks (long glass rods used in tall drinks such as a Tom Collins) whose purpose is merely to "stir".

The Cambridge Muddler No. 1 measures 4 1/2 inches long, has a swirl design and is easiest to find in crystal. The most sought after muddler is the Rooster Muddler which Cambridge listed as No. 2 and measures 5 inches. This unusual



Both the #1203 7 oz. old-fashioned cocktail tumbler and the #1 muddler shown here are amber.

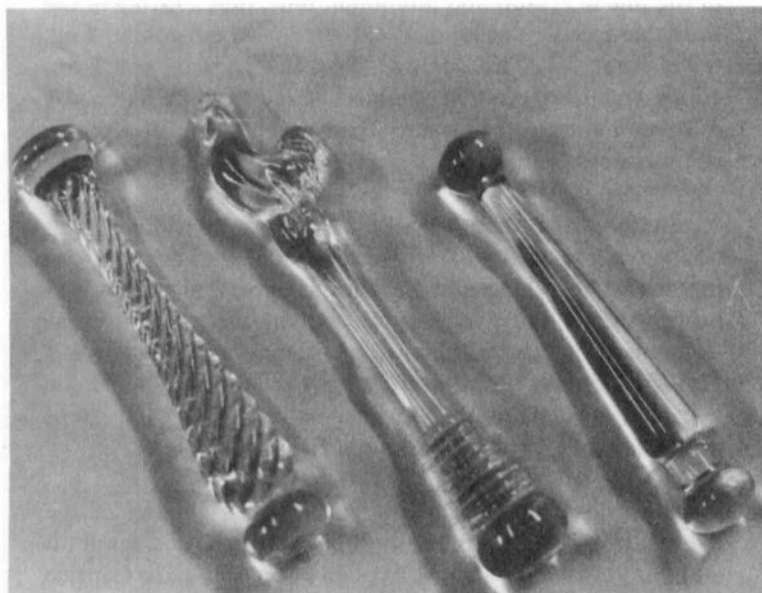
and attractive muddler is collected by figural collectors as well as those who collect barware. Again, the crystal Rooster Muddler is the most common, colored ones are much more difficult to locate. No. 3 muddler, extremely plain but recognizable by the bulbous base, is the rarest and has only been found to date in crystal. The shortest muddler of the three, it measures only 4 inches and must have been in production for a very short time. Five years of searching has only turned up four in this style.

Cambridge muddlers were not marked but some have been found with the original Cambridge label. Their accompanying old-fashioned glasses however carry the famous Cambridge trademark, the "C" in a triangle. The 7 oz. old-fashioned glasses most easily found are the Mount Vernon and the No. 1203 Shammed. Apparently more muddlers survived the years than the old-fashioned glasses.

It is conceivable that Cambridge muddlers might be found in any color Cambridge made. However, the colors found so far include; crystal, royal blue, carmen, emerald green, amethyst and amber. Several amberina muddlers are in the collection. The amberina color was perhaps carmen (ruby) that was poured into a mold that had not been evenly heated, causing part of the muddler to appear amber.

Mind shattering is the thought of finding a Gold Krystol, Heatherbloom, or LaRosa muddler. Even more exciting would be finding a Cambridge muddler in an opaque color.

If you have been collecting old-fashioned glasses, you might want to consider searching for the muddlers to go with them.



#1

#2

#3

CAMBRIDGE MUDDLERS

NOTE DETAIL ON ROOSTER'S FOOT

NOTES ON CAPRICE

by Mark Nye
Miami, FL

Being an avid Caprice collector, I am always seeking additional information about this pattern. In the past year or so I have acquired several unusual Caprice pieces and discovered information I would like to share with other Caprice collectors and Cambridge enthusiasts in general.

The first piece is a four footed, 2 handled, oval bowl that is definitely a different size from the #65, 11" bowl of a similar description listed on the January 1941 price list (see C.B. issue #46, page 5). This bowl is in Moonlight Blue and was obtained while at the 1980 NCC Convention. I have since seen the same bowl in crystal. A comparison of the dimensions of the two bowls is interesting.

Dimension	#65	#7
Width (outside to outside)	8 1/2"	6 1/2"
Length (outside to outside) - excluding handles	12"	9 1/4"
Height - Table to highest point	4 1/4"	5"
Base length - excluding legs	4"	4"
Base width - excluding legs	3"	3"
End - top to base	5"	5"
Side - top to base	4 1/2"	4 1/2"
Inside width	7 3/4"	5 3/4"
Inside length	11 1/2"	8 1/2"

Based on these dimensions, I would think the bowl was sold as an 8" version of the #65 piece and was made from the same mold. The increased dimensions of the #65 bowl resulted from spreading the warm glass upon removal from the mold, while the 8" bowl was left as it came from the mold.

Where this new piece fits into the Caprice numbering scheme, I can't determine. Except for the three salad bowls, nos. 80, 81 and 82, all of the other large bowls are numbered between 49 and 66; however, several numbers are missing. Parallel with the bowls listed as nos. 57, 58, 60, 61 and 62, there are smaller versions numbered 49, 50, 52, 53 and 54. Each small bowl is listed by a number that is eight less than the larger size. Unfortunately this does not hold true for our mystery bowl since #57 (65 minus 8) is described as a 10" salad bowl, four footed. Thus, until such time that a catalog or price list reference is discovered, its item number shall remain unknown. My guess is that our mystery bowl was introduced prior to or at the same time as the #65 bowl and that the item number will be in the grouping of #49-66.

The second piece indicates there is another series of vases different from those listed on the January 1941 price list and pictured in the Welker Catalog Reprint II, page 35. I have a crystal vase that measures 8 1/4" in height and appears to be identical to the #343 vase with the exception of the top. My vase has a smooth top with no ribs in the short neck while the #343 has a ribbed neck and the rim is similar to that found on other Caprice pieces. How many sizes there

may be in this type of vase I don't know; but there are at least two, the 8 1/4" and a 4 1/2" which I have as part of a lamp (see next paragraph). My guess, and it is just a guess, is that the item numbers will turn out to be 347, 348 and 349, assuming there is an intermediate size (approximately 6") as in the other vases. Again, confirmation of this will have to await discovery of a catalog listing.

Now for the lamp I mentioned earlier. This piece was also acquired at the 1980 NCC Convention and shortly thereafter I learned of a similar lamp in Moonlight Blue that is in another Caprice collection. While it is very doubtful these lamps were assembled by Cambridge, they do utilize two Caprice pieces and can rightfully be called Caprice lamps.

The Caprice items used are the base to the #207 cigarette box and the small version of the vase described in the preceding paragraph. Holes have been drilled in the bottoms of the two items, metal tops placed on them and a metal tube extends up thru the two pieces with a 1" metal spacer between the two glass parts. A standard single bulb fixture with a press switch and a shade holder complete the lamp. From the base to the top of the finial, the height is 16 1/8". My lamp is in crystal with the metal parts gold in color. It is not known at this time what company actually assembled these lamps or the years when they were produced. Hopefully some reference to them will turn up eventually in old trade journals or other advertisements.

While reading the information available in the Research Room at the 1979 NCC Convention, I came across page two of a Cambridge Glass Co. Circular Letter, Number 163, dated July 25, 1939, which referenced the Caprice #400 line stemware. The only information given was the availability of the line in crystal and moonlight blue, plus a listing of the available pieces. The items listed were: 10 oz. goblet, 7 oz. tall sherbet, 3 1/2 oz. cocktail, 5 oz. low sherbet, and 5 oz., 10 oz. and 12 oz. footed tumblers. Page 1 of the letter was missing and no other reference to a #400 line of Caprice stemware was found.

Again this year I went thru all available information and still no luck as no additional reference could be found. Questioning several knowledgeable Cambridge experts also produced no results. To date I have only these two pieces of information regarding this unknown line: First, the fact that it was available in July 1939, and the pieces that comprised the line; and second, that there is no reference to #400 stems in the January 1940 catalog, only five months later.

I suspect the #400 line might have been a version of the pressed stems and tumblers, numbers 1-12. This is based on matching capacities and the duplicity of pieces in the Caprice line, but obviously I have no real evidence to support this supposition.

The next bit of information I'd like to share is on the #310 12 oz. tumbler (see C.B. issue #45, page 7). A circular letter,

#96 dated October 5, 1938, describes the availability, on special order only, of this tumbler marked with a line to indicate 1 1/2 oz. of whiskey. This was designed to alleviate the need for a shot glass or other measuring device while mixing hi-balls and still obtain an accurate measure. I would doubt this promotion lasted for any length of time and since tumblers so marked were special order only, they would have to be a scarce, if not rare, piece today. I have yet to see one.

The last bit of information I have regards Caprice look-alikes. During a recent visit to the Viking Factory Outlet Store, I saw three pieces very similar to Caprice: a cake stand; a shallow 10", four footed bowl; and a large four footed cabaret plate. The unwary could mistake these for Caprice but close scrutiny revealed some distinguishing characteristics.

The overall quality of Cambridge glass just isn't there. The base to the cake stand is entirely different than that used for the authentic Caprice piece. The feet on the other two pieces are devoid of any detail, opposed to the ribs that are found on the feet to Caprice items. The clerks in the store had no knowledge of the pieces but I would assume they are being made for another company which will in turn apply silver overlay although I have never seen a cake stand so decorated. Be aware of these pieces, their distinguishing features, and pass them up at your local flea if they should appear.

Caprice, like some other Cambridge patterns, is a never ending source of surprises to the collector. No doubt it will be some years before we have the full Caprice story. I would appreciate hearing from readers who have additional information regarding any of the above items. Write to me c/o P.O. Box 416, Cambridge, OH 43725.

AUCTION INFORMATION

by Lynn Welker, Chrm.
1981 Auction Committee

The 1981 N.C.C. All-Cambridge Glass Auction will be held on February 28, 1981 at 11 AM at the Shenandoah Inn, Old Washington, Ohio. All glass to be sold will be guaranteed to be Cambridge and the proceeds will benefit the N.C.C. Museum Fund.

CONSIGNMENTS: We are now accepting consignments for the auction. You may place as many consignments as you wish, but please let us know before shipping any glass, so that we may approve your consignments. All items must be Cambridge Glass. We would prefer that all items be perfect, but we will accept minor damages if we feel that the piece merits consignment. Again, please do not ship items until we let you know that all consignments are acceptable. Glass is to be shipped to:

Lynn Welker
2 East Main
New Concord
Ohio 43762

..... continued

For any other information, phone: (614) 826-4418. We will accept consignments in order that we are notified about them. We will accept only 300 lots so let us know about your consignments, immediately. We must have your glass early so that the auction catalog may be printed and mailed early enough to allow for mail bids.

DROP-OFF POINTS: If you wish to deliver glass for the auction, you may drop it off with the following:

Janice Hughes, Cambridge, Ohio	614-432-7823
Lynn Welker, New Concord, Ohio	614-826-4418
Jo Barstow, Cambridge, Ohio	614-439-2295
Willard Kolb, St. Clairsville, Ohio	614-695-0695
Bill Smith, Springfield, Ohio	513-323-3888
Frank Wollenhaupt, Dayton, Ohio	513-254-2937
George Hoffman, Newark, Ohio	614-345-8021
Bill Turner, Zanesville, Ohio	614-454-7095

You must notify me of the pieces that you are consigning before dropping it off with one of these members.

The auction committee does reserve the right to turn down any consignments because of damage, duplication, or questionable origin.

Each member will receive a copy of the Auction Catalog through the mail. Mail bids will be accepted this year. Complete mail bid instructions will be printed on the front of the catalogs. If you are planning on attending and wish to spend the night, reservations may be made by phoning the Shenandoah Inn at 614-489-5511.

The auction will be held in conjunction with the February Quarterly Meeting, Friday, February 27 at the Shenandoah Inn. There will be a short program as well as a preview of the auction glass for those attending the meeting.

If you wish to consign glass, please let us know as soon as possible as we already have several consignments. Plan to attend the auction as it's an enjoyable and educational event.

— Classified —

BUYING: DEPRESSION GLASS, CAMBRIDGE, HEISEY, FOSTORIA, AKRO-AGATE, glass figurals and unusual glass "cuties". Nadine Pankow, 207 S. Oakwood, Willow Springs, IL 60480. Phone: 312/839-5231.

FOR SALE: ROSEPOINT, 10 water goblets, 10 sherbets, \$20 each. Rock Crystal Achilles, 12 goblets, 12 sherbets, 12 iced teas, 14 salad plates, \$16 each; cream & sugar \$35 set; compote, 5". \$35. Jean Hamacher, 930 E. Lexington, Richmond, MO 64085. Phone: 816/776-2128.

SELL OR TRADE: HAVE EXTRA ROSEPOINT as follows: 10 #3121, 6 oz. Tall Sherbets; 9 #3121, 10 oz. Tall Goblets; 4 #3121, 5 oz. ftd. Tumblers; 1 #3900, Sugar & Creamer set. Needed: 6 #3900, Cups & Saucers; 5 #3900, Dinner Plates; 9 #3121, ftd. Iced Teas. Call/Write: C. F. Wilson, 6385 El Paseo Dr., San Jose, CA 95120. Phone: 408/268-5909.

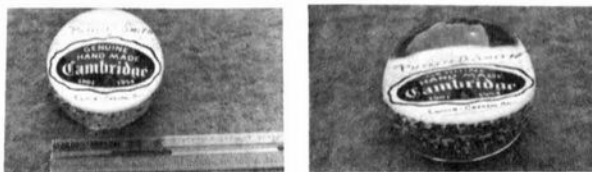
PROJECTS

by Willard Kolb,
Chrm. Project Committee

As this article is being written, we have not received any comments as to what you, the members, would like us to do in the way of projects. We haven't even received any complaints or caught hell for doing anything wrong. If this keeps up we're going to get big headed and think we're doing a good job. Let us hear from you.

There have been 334 bookends sold to date, leaving only about 40 yet to be sold. If you haven't bought yours yet, you better get your order in as soon as you can after you read this. We have opened sales to the general public effective October 1st. Advertising of this has been by word of mouth so far, but an ad will appear in the next issue of the "Glass Review", which should reach the public shortly after this article appears in your CRYSTAL BALL. An example of what will probably happen when non-members can purchase them is: of three people who were shown the bookend, all three purchased a pair of them. This doesn't mean that everyone in the country is going to want one but it does show that if people can see them they will buy them. Again, if you think you may want one or a pair, order it, and on receiving it, if it isn't what you think it should be, return it and we'll refund your money. We certainly prefer that members have every chance to purchase them first.

The personalized paperweights haven't caught on too well yet, but we expect them to, considering the amount of people who have inquired about them. Again, the members would like to know more about what they look like. Although they have been described in the last two issues of the CRYSTAL BALL, we know that it is hard to picture what they really look like. We will try to run a picture of one if it will help. Also we may have a colored print made up and if you are really interested in buying one we could send you a print that may show it pretty well. All we can tell you is that you can't buy a paperweight of this type anywhere for \$35.



Another idea that someone wanted to try was to send their own cullet to have embedded in the base of the paperweight. We need cullet and if you have a piece of glass (colored) or several pieces of glass that are damaged, you could send them and have the pieces preserved in your paperweight. I'm sure Tom Mosser would be willing to do this for you.

As always we are working on other possible projects and will let you know when any of them are finalized. Thanks to all of you who have participated in the bookend project and we will try to be as faithful to you as you have been to N.C.C.

Don't forget to order your paperweight soon if you want to give it as a Christmas present.

DEADLINE CHANGE

Due to the up-coming Holidays, we find it necessary to change the deadline for copy and advertising from the 15th of the month to the 10th! This change will be in effect for the December and January issues. Copy must reach us by November 10th to be included in the December issue, and by December 10th to be included in the January 1981 issue. Thanks!

STUDY CLUB NEWS - continued from page 2

STUDY GROUP #7 - EASTERN OHIO "THE CAMBRIDGE BUFFS"

The Cambridge Buffs Study Group met September 17th, at the home of Jim and Shirley Douglas, with all members present.

Money-making ideas were discussed, and it was announced that our share of the revision for the Price Guide was complete, except for the Chantilly pieces.

"Show & Tell" was the program, and Charles Upton led the discussion. Items shown were: bluebell frosted Weatherford berry bowl; royal blue Melon Ivy Ball; a ball bottom cocktail; royal blue Honeycomb bowl; #3300 light emerald green goblet; #3400 amber cream soup w/ underplate; carmen Cambridge Square 6" bowl; heavy pressed pickle dish; Snowflake child's butter dish in green; Daisy ftd. jelly or banana split dish; early Nearcut pressed salt and pepper shakers and cups; and a carmen Tally-Ho cocktail.

Charlie announced that he would be identifying Cambridge Glass at the Degenhart Museum on October 5th, and that Doris Isaacs would help him.

Next meeting will be held in the home of Lena Barnes, on October 8th. The program will be on covered Candy Dishes.

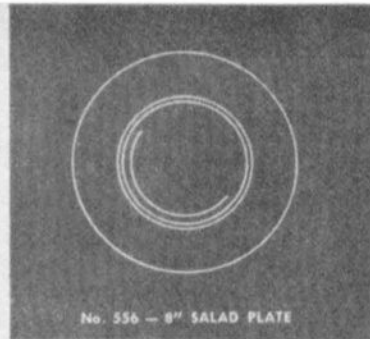
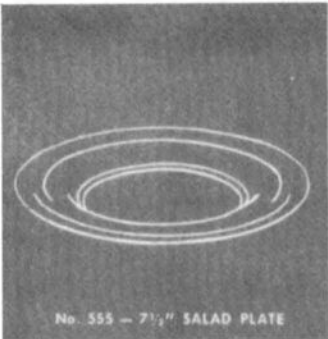
The Cambridge Buffs Study Group met October 8th at the home of Lena Barnes, with 13 members present.

The Program was on covered Candy Dishes, with 32 to be examined and admired. An unusual one was blown and had the illusive Frenzy etching. Several in the Georgian pattern were presented, as well as those in colors of windsor blue, rubina, and a light emerald green Cleo etched example with rose finial.

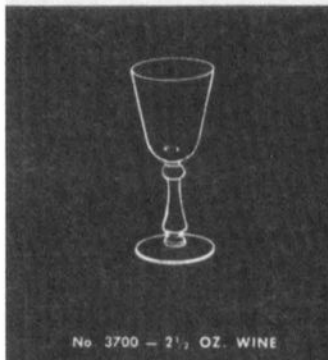
The "Show & Tell" table sported pattern glass items, New Martinsville creamer, and several Cambridge items including an etched Paisley plate and a bluebell 9 oz. Georgian tumbler.

Next meeting will be held in November at the home of Larry and Karen Jones.

submitted by Doris Isaacs, Secretary



No. 821
King Edward
ROCK CRYSTAL ENGRAVED



Roses

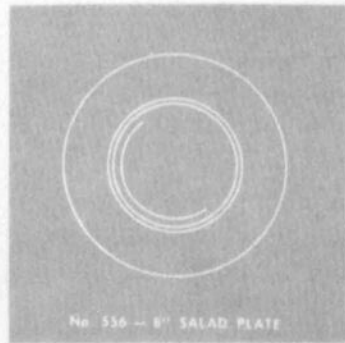
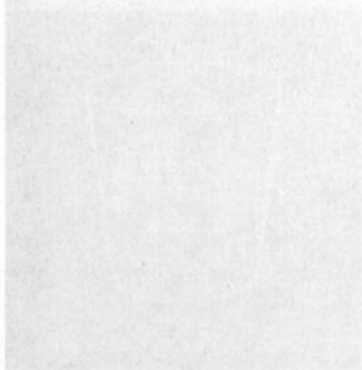
No. 2P

+

Tomorrow

No. 8P

ROCK CRYSTAL ENGRAVED





No. 968
2-PIECE COCKTAIL ICER



No. 3500 — LOW SHERBET



No. 3500 — GOBLET



No. 3500 — TALL SHERBET



No. 3500 — 3 OZ. COCKTAIL



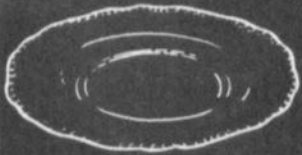
No. 3500
12 OZ. FOOTED TUMBLER



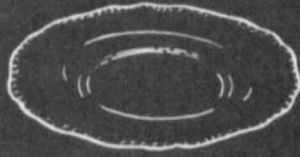
No. 3500 — 7 1/2 OZ. WINE



No. 3500 — 4 1/2 OZ. CLARET



No. 3500/5 — 8 1/2" SALAD PLATE



No. 3500/167
7 1/2" SALAD PLATE



No. 3500
4 1/2 OZ. OYSTER COCKTAIL



No. 3500 — 1 OZ. CORDIAL



No. 3500
10 OZ. FOOTED TUMBLER



No. 3500
5 OZ. FOOTED TUMBLER



No. 3500 — 5 OZ. CAFE PARFAIT



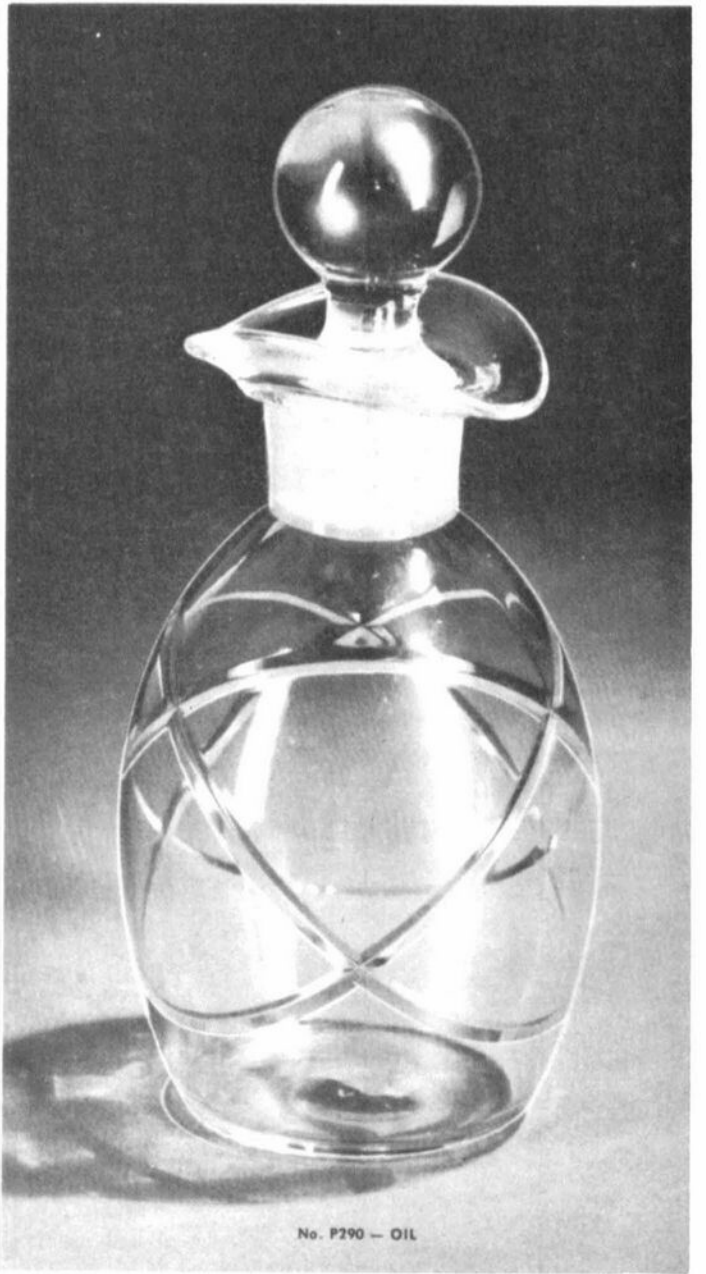
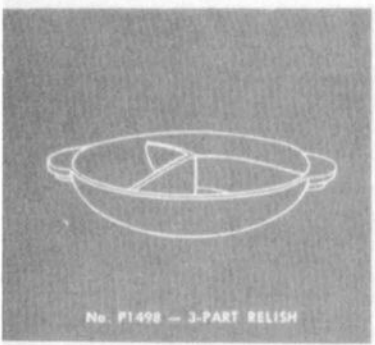
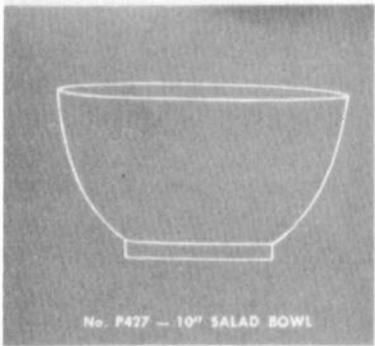
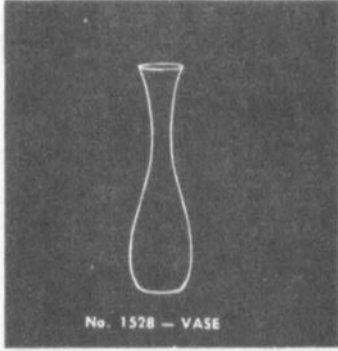
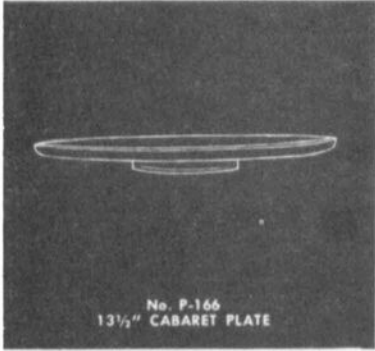
No. 3500
10 OZ. FOOTED TUMBLER ADONIS

Croesus No. 722
+
Adonis No. 720

ROCK CRYSTAL ENGRAVED



No. 3500 — GOBLET CROESUS



WANTED CAMBRIDGE GLASS

AMBER

#531 7¼" tall comport with etched "732" Majestic

CARMEN

#3400/14 7" tall comport
 #3400/646 candlesticks (Keyhole)
 #3400/28 7" low comport (Keyhole)
 #702 Minature Cornucopia (pair)
 #67 2½" candlesticks (Caprice)

CARMEN OR AMETHYST

#3500/37 7" tall comport (Gadroon)
 #3500/36 6" tall comport (Gadroon)

MOONLIGHT BLUE EVERGLADES

#41 7" comport

FOREST GREEN EVERGLADES

#32 or #34 candlesticks

ANY COLOR - (No Crystal)

#1402/67 6½" comport (Tally-ho)
 #1402/76 5" candlesticks (Tally-ho)
 #1402/80 or 81 candlesticks (Tally-ho)
 #468 6½" tall comport (Pristine)
 #498 7" candlesticks (Pristine)

Glass must be in **MINT** condition!

Please price with first letter.

A. Harrigan
 2801 N. Bristol #91
 Santa Ana, CA 92706

BOOKS FOR SALE

All of the available reference books relating to Cambridge glass can be ordered directly from the Club.

Address your orders for any of the following to:

BOOKS

National Cambridge Collectors, Inc.
 P.O. Box 416
 Cambridge, Ohio 43725

Please add \$1.00 (P & I) on each book order.
(Not required for Price List only orders)

Ohio residents please add 4½% State Sales Tax.

★ ★ ★ ★ ★ ★ ★ ★ ★ ★ ★ ★ ★ ★ ★ ★ ★ ★
 by National Cambridge Collectors, Inc.

1958-1958 CAMBRIDGE GLASS CO. CATALOG REPRINT
 (164 page reprint of original catalog)
 Paperback \$6.95

1949-1953 CAMBRIDGE GLASS CO. CATALOG REPRINT
 (300 page reprint of original catalog)
 Hardbound with Price Guide \$14.95

1930-1934 CAMBRIDGE GLASS CO. CATALOG REPRINT
 (250 page reprint of original catalog)
 Hardbound with Price Guide \$14.95

1978 PRICE GUIDE
 for 1930-1934 catalog reprint \$2.00

★ ★ ★ ★ ★ ★ ★ ★ ★ ★ ★ ★ ★ ★ ★ ★ ★ ★
 by Mary, Lyle, and Lynn Welker

CAMBRIDGE GLASS CO.
 (120 pages of reprint from 8 old catalogs) \$6.95

CAMBRIDGE GLASS CO. BOOK II
 (119 pages of reprint from old catalogs) \$6.95

CAMBRIDGE, OHIO GLASS IN COLOR II
 (15 color plates w/descriptions and notes) \$5.95

★ ★ ★ ★ ★ ★ ★ ★ ★ ★ ★ ★ ★ ★ ★ ★ ★ ★
 by Harold and Judy Bennett

THE CAMBRIDGE GLASS BOOK
 (96 pages with 59 color plates) Paperback \$7.95

1903 CAMBRIDGE GLASS CO. CATALOG REPRINT
 (106 page reprint of an original catalog) \$7.50

★ ★ ★ ★ ★ ★ ★ ★ ★ ★ ★ ★ ★ ★ ★ ★ ★ ★
 by Charles and Mary Alice Upton

1979 PRICE GUIDE to the CAMBRIDGE GLASS BOOK
 (Prices for each item in Bennett book) \$2.00

★ ★ ★ ★ ★ ★ ★ ★ ★ ★ ★ ★ ★ ★ ★ ★ ★ ★

LYNN WELKER

2 East Main, New Concord, OH 43762
Phone (614) 826-4418

FOR SALE

Pink Caprice #65, 11" oval bowl	\$35.00
Pink Apple Blossom 8½" plates (10) ea.	8.00
Yellow Apple Blossom sandwich tray	30.00
Lt. Emerald Green Etch #731, 12 oz. ftd. tumblers - ref: NCC 30-34, pg. 82-D (4) ea.	14.00
Carmen Tally-Ho, 12 oz. tumblers (4) ea.	12.00
Carmen Tally-Ho, 10 oz. tumblers (2) ea.	10.00
Amber #1066 Ivy Ball	20.00
Emerald #1066 Ivy Ball, rare, stem & foot Emerald also	50.00
Crown Tuscan #74, 10" bud vase (2) ea.	15.00
Crown Tuscan Dolphin cigarette box	25.00
Primrose 8" stick vase	30.00
Jade 6½" candlesticks (pair)	45.00
Azurite 6½", 3 ftd. sweetmeat	25.00
Ivory 8" Ram's Head pattern plate	25.00
Milk Glass Everglades, 12 oz. mug	20.00
Crackle large flared tumblers, rare:	
Pink	15.00
Moonlight Blue	20.00
Swans, 3½":	
Milk Glass	45.00
Mandarin Gold	30.00
Crown Tuscan, rare, signed, style II	75.00
Carmen, rare, signed, style II	115.00
Pencil Dogs:	
Amber	15.00
Mocha	20.00
Rooster Muddlers, crystal (4) ea.	12.00
Mount Vernon:	
2 oz. Whiskeys (5) ea.	4.00
Coasters (8) ea.	4.00
Cordials (3) ea.	5.00
Caprice, Crystal, cups & saucers (12) ea.	10.00
Rock Crystal Laurel Wreath salt & pepper Chantilly:	15.00
Cups & Saucers (5) ea.	16.00
#3625 Goblets (5) ea.	15.00
#3625 tall Sherbet/Champagne (3) ea.	15.00
#3779 Iced Teas (4) ea.	12.00
#3779 low Sherbets (8) ea.	10.00
Diane #3122, goblet (1) Champagne (2) ea.	12.00
Elaine #3035 goblet	12.00
Minerva #3500, tall Sherbet/Champagne	12.00
Daffodil 6½", tall, large Comport	35.00

Large stock: Rosepoint, colored Caprice, stemmed Cordials, Candelabra parts, etc.

POSTAGE EXTRA - Excess Refunded! Return Privileged Prices Each!

ALL GUARANTEED CAMBRIDGE

OLDE LOVED THINGS

Antiques & Collectibles

900 Ridgewood Ave.
Holly Hill, FL 32107

CAMBRIDGE

1. Royal blue 8" Nude comport	\$95.00
2. Mt. Vernon:	
6" bowl, royal blue (2) ea.	15.00
6½" comport, royal blue	24.00
3. Martha Washington, 7", 4 pt. relish, royal blue, signed	22.00
4. #65, ebony, 9½" Doric candlesticks	95.00
5. #603 coasters, amber (6) all	10.00
6. Wildflower, 12", ftd. oval bowl	28.00
7. Gyro-Optic:	
Pitcher & 6 tumblers, moonlight blue	65.00
Pitcher & 8 tumblers, pink	75.00
8. Crystal 3 oz. Nude cocktail (6) ea.	55.00
9. Royal blue Nude ivy ball	95.00
10. Mandarin gold 3 oz. Nude cocktail (4) ea.	65.00
11. Moonlight blue 2½" Star candlesticks, pr.	6.00
12. Cascade:	
Cream & sugar, mandarin gold, pr.	16.00
Cream & sugar, forest green, pr.	22.00
13. Martha, cream, sugar, tray, forest green	25.00
14. Urn, green cream & sugar, pr.	20.00
15. Caprice:	
Moonlight blue, 12", flared, ftd. bowl	28.00
Moonlight blue, 3", Alpine candlesticks	22.00
Moonlight blue, 6½", 2 pt. relish	18.00
Crystal, 6" ftd. candy & cover	17.50
Pink, 12" flared bowl	35.00
Pink, 3" candlesticks	24.00
Royal blue, 10" bulbous vase	95.00
Forest green, triple candlesticks	95.00
16. Royal blue Nude table goblet	85.00

DEALERS



DIRECTORY

NOTE: When writing to the Dealers listed here, please enclose a SASE!

<p>EVELYN M. ALLEN 135 Cynthia Street Heath, Ohio 43055 Mail Order & Shows 614-522-1635 SPECIALIZING IN CAMBRIDGE GLASS!</p>	<p>BENICIA ANTIQUE SHOP 305 First Street Benicia, California 94510 OPEN 11 AM - 5 PM Closed Monday</p>	<p>CHARLES MIKULIK Box 416 Elizabeth, N.J. 07207 — COLLECTOR — Always paying good prices for CAMBRIDGE CAPRICE in all colors 201-372-1101 CARRY MOST TYPES OF ANTIQUES</p>
<p>BLACK ROOSTER ANTIQUES 1018 Clark Street Cambridge, Ohio 43725 614-432-3202 M. Sipe CAMBRIDGE GLASS - GENERAL LINE</p>	<p>Z. E. LOPES 707-745-0978 VISIT HISTORIC BENICIA and its 28 shops Off Interstate #80 North of San Francisco</p>	
<p>BERKELEY ANTIQUES 69 Berkeley St. Boston, MA 02116 George or Frank 617-426-1048 CAMBRIDGE, HEISEY, GENERAL LINE</p>	<p>COLLECTORS II 414 S. Washington Olympia, WA 98501 Ruby Gilmer & Pauline Christensen 206-754-7808 GLASSWARE — POTTERY — COLLECTIBLES</p>	<p>COYLE & SCHUSTER ANTIQUES Box 982 - Ph. 614-349-7362 Newark, Ohio 43055 Shows & Mail Order BUY & SELL - CAMBRIDGE - HEISEY</p>
<p>D & D ANTIQUES Columbus, Ohio DICK SLIFKO SHOWS ONLY</p>	<p>D'MARIE'S ANTIQUES US Rt. 1 - just South of Rt. 606 Thornburg, Virginia 22565 703-582-6220 Jim Rankin OPEN EVERY DAY 10 AM to 6 PM</p>	<p>FINDER'S KEEPER'S ANTIQUES P.O. Box 303 Dayton, O. 45401 513-254-2937 P.O. Box 16023 Columbus, O. 43216 614-885-2726 SPECIALIZING IN CAMBRIDGE GLASS!</p>
<p>THE GLASS CUPBOARD 39 Shire Oaks Drive Pittsford, New York 14534 Marcia Ellis 716-586-7596 CAMBRIDGE ONLY SASE FOR LIST</p>	<p>GEORGE HOFFMAN ANTIQUES 129 South 4th Street Newark, Ohio 43055 614-345-8021</p>	<p>'OUR GLASS ANTIQUES Box 27, Wills Point, Texas 75169 20th CENTURY COLLECTIBLES featuring CAMBRIDGE GLASS! Shows - No Lists - SASE Please PAUL & GINNY HENDERSON 214-563-6971</p>
<p>LASHER ASSOCIATES 119 Water St. Gaithersburg, Md. 20760 Faith Lasher 301-977-8296 SPECIALIZING IN GLASSWARE</p>	<p>THE KRAUSE'S 944 Jefferson Ave. Washington, PA 15301 John & Gail Krause 412-228-5033 SPECIALIZING IN DUNCAN MILLER GLASS</p>	<p>1886 HOUSE East Schodack, N.Y. 12063 MAIL and SHOWS Laurie Cruise 518-477-5895 CAMBRIDGE - NORITAKE - AZALEA - D.G.</p>
<p><i>YOU CAN ADVERTISE YOUR ANTIQUE SHOP HERE!</i> 1 inch - \$6 for six months</p>	<p>ROLLING ACRES ANTIQUES 66484 N. 8th Street Road Cambridge, Ohio 43725 Sandy Jenkins & Anne Ingram 614-432-2570 CAMBRIDGE & GENERAL LINE ANTIQUES</p>	<p>BILL & SHARON PHILLIPS 21730 Priday Euclid, Ohio 44123 Ph. 216-261-4665 Shows Only BUYING GLASS, ANTIQUES, ETC.</p>
<p>CHARLES A. SHAW Glenwood Gardens - R.V.W.1B Yonkers, NY 10701 AMERICAN GLASS — 914-476-5175 SHOWS & MAIL ORDER!</p>	<p>AL STEELE Westerville, Ohio 614-882-6483 or 614-882-7124 Mail Orders and Shows Only HEISEY — CAMBRIDGE — PATTERN GLASS</p>	<p>SWISS HILLS COLLECTIBLES Mary & Wilbur Henderson 303 Guilford Avenue Woodsfield, Ohio 43793 Mail & Shows 614-472-1133 SPECIALIZING IN CAMBRIDGE GLASS!</p>
<p>THREE FRIENDS ANTIQUES CO. 3930 Broadview Rd. Richfield, OH 44286 Hours: Tues.-Sat. 10-4, Sun. 12-5 Phone 216-659-3930 WE BUY & SELL CAMBRIDGE!</p>	<p>THIS 'N' THAT PLACE 101 South Street Chagrin Falls, Ohio 44022 Lue Koerper 216-247-4938 OPEN THURS. - SAT. 10 AM - 5 PM</p>	<p>WICKFORD ANTIQUE ARCADE 650 Ten Rod Road North Kingstown, RI 02852 The Clausons 401-295-7520 SPECIALIZING IN GLASSWARE</p>



"HOLIDAY FESTIVAL OF AMERICAN HANDCRAFTED GLASS"

Celebrating the Famous Glassmaker's 75th ANNIVERSARY

SAGE-ALLEN and the FENTON FINDERS OF CONNECTICUT join with THE FENTON ART GLASS COMPANY in

The Gala Three Day Celebration Will Include

LECTURES - Roserita Ziegler, Renowned Lecturer "The Investment Potential of Collecting American Handmade Glass"

FENTON FINDERS OF CONNECTICUT - Displays of personal Fenton Collections

GLASS EXPERTS - From the Northeast with expertise in their glass specialty will identify glass free for the public - limit two items

"THE FENTON GLASS STORY" - A film presentation will be shown continuously

VELVA ROSE (Pink Stretch) - A 75th Anniversary Special marked with unique "75" and individually signed by a member of the Fenton Family. Sage-Allen will be the only Connecticut Department store to have these pieces

AUCTION - "A Collector's Delight" Auction - Sunday, 2:00 P.M. - Samples and "One of a Kind" items

ROSE BURMESE - A limited grouping of this pattern will be available. To be discontinued December 1980. Burmese Glass is considered by many to be "The Glass of the Century"

PREVIEW OF FENTON 1981 - "Today's Glass" - "Tomorrow's Collectibles"

SAGE-ALLEN, WESTFARMS MALL

China & Glass Department West Hartford, Connecticut Interstate 84, Exit 40

Friday, December 5 11:00 a.m.-8:00 p.m. Saturday, December 6 11:00 a.m.-8:00 p.m. Sunday, December 7 12:00 noon-5:00 p.m.

REMINDERS

for your NCC CHRISTMAS SHOPPING LIST!!

- #1 - SEND CHRISTMAS GREETINGS! (send \$1 and desired message - 20 words or less - to NCC before November 10th!)
#2 - ORDER PAPERWEIGHT FOR GIFT TO YOURSELF OR SOMEONE DEAR! (send \$35 along with desired name - to NCC just as soon as possible!)
#3 - GIVE A GIFT NCC MEMBERSHIP TO A FRIEND! (send \$10 along with your friends name and address - to NCC right away! We'll take care of letting them know it is a gift from you. This will also count toward helping you win our membership Contest!)
#4 - CAMBRIDGE BOOKS MAKE GREAT GIFTS! (see "Books for Sale" ad inside and order those you need as a special gift to yourself or a friend!)
#5 - RELAX - YOU HAVE EVERYTHING UNDER CONTROL FOR A WONDERFUL NCC CHRISTMAS!



National Cambridge Collectors, Inc. P. O. Box 416 Cambridge, Ohio 43725

FIRST-CLASS MAIL U.S. POSTAGE PAID So. Vienna, Ohio 45369 Permit No. 15

FIRST CLASS MAIL