

Cambridge

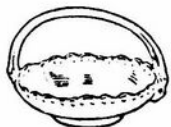


Crystal Ball

ISSUE NO. 107

MARCH 1982

Published monthly by the NATIONAL CAMBRIDGE COLLECTORS, Inc.
To encourage and to report the discovery of the elegant and boundless product
of the Cambridge Glass Company, Cambridge, Ohio



THOUGHTS from your President . . .



I wonder where all the glass disappears to at this time of year? It's really scarce. I suppose that the owners, especially in this part of the country, go into hibernation. Maybe now that spring is just around the corner things will loosen up a bit. It's awful not to be able to buy a piece of glass even though you really don't need it.

By the time you receive this issue of the *Crystal Ball*, the Auction will be history and you will probably see a few more happy faces around. The list of items, and the prices they sold for, will probably be in the April *Crystal Ball*, and as usual some of the prices will be shockers.

Now is the time to be thinking about, and making plans for the Convention and Show. Granted it is four months hence, but time will slip by very quickly. The Convention Chairperson (Jo Barstow) and the Show Chairperson (Joy McFadden) are well along with their plans to bring you an exciting weekend. Arrangements have been made to increase the seating capacity for the banquet. Your registration forms will be in the April issue. Mail them back as soon as possible, before the deadline for reservations. This will help those responsible for planning and eliminate hurt feelings and maybe even embarrassment. You should call the Shenandoah Inn now (614-489-5511) or write them at PO Box 147, Old Washington, Ohio 43768 and make your room reservations. Mention your NCC affiliation because we understand there will be special room rates in effect.

An article reminding you of the Flea Market was in the February *Crystal Ball*. If you would like to participate, or know someone else who would, you may send for a contract. Already, quite a few contracts have been returned. It should be a very good Flea Market again this year.

I would like to ask your support in making the Color Book Project a very successful one. The four volunteers who are on the committee have done a lot of preliminary work and are quite capable of bringing us one of the best color books on the market. Please read carefully their request in this *Crystal Ball*, and assist them in any way you can to help facilitate the publishing of this book. It is a much needed tool for all Cambridge Glass collectors.

There are still Scotty Dog Bookends available at \$30 each, plus \$3 postage & handling and \$1.65 State tax for Ohio residents. If interested, please purchase as soon as possible. We would like to start on the next Bookend Project soon. Also, there are still available color reprints of a 1913 Factory postcard at \$2 each plus 20 cents postage.

(A Brilliant Deduction) If every member would sign up just one new member, our membership would double.

Willard

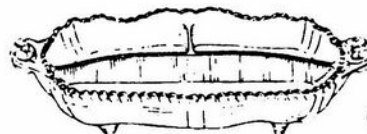
MEMBERSHIP RENEWAL NOTICE

If the date on your
address label is - -

3-82

This is your **LAST ISSUE** of the **CRYSTAL BALL**.

Please renew **NOW!**



GADROON



CAMBRIDGE CRYSTAL BALL

Official publication of National Cambridge Collectors, Inc., a non-profit corporation with tax exempt status. Published once a month for the benefit of its members.

Membership is available for individual members at \$10 per year and additional members (12 years of age and residing in the same household) at \$3 each. All members have voting rights, but only one *Crystal Ball* will be mailed per household.

Back issues of the *Crystal Ball* are available (beginning with Issue No. 1, May 1973) for members only. Cost: \$.60 each or 12 issues for \$7.

1981-82 OFFICERS & COMMITTEE CHAIRPERSONS

PRESIDENT Willard Kolb
 VICE-PRESIDENT Josephine Barstow
 SECRETARY Janice Hughes
 TREASURER William Smith
 SERGEANT-AT-ARMS Don Armbrrecht

BOOK SALES Meg Turner
 BUDGET & FINANCE David Rankin
 BY-LAWS David Rankin
 CONVENTION Josephine Barstow
 MEMBERSHIP Phyllis Smith
 MUSEUM Billy Harbaugh
 PROGRAM & ENTERTAINMENT Frank Wollenhaupt
 PROJECT Willard Kolb
 PUBLIC RELATIONS William Smith
 PUBLICITY Joseph Andrejcek
 STUDY GROUP ADVISORY Jack Rettig
 1982 ALL-CAMBRIDGE AUCTION Lynn Welker
 1982 ANTIQUE SHOW Joy McFadden

CRYSTAL BALL EDITOR Peg Gotschall

CLASSIFIED ADVERTISING RATES

5c per word \$1.00 minimum
 We cannot mix type size in classified advertisements. Abbreviations and initials will count as words. Payment in full MUST accompany all ads.

DISPLAY ADVERTISING RATES

	Members	Non-Members
1/8 page	\$ 4.00	\$ 6.00
1/4 page	7.00	10.00
1/2 page	12.00	18.00
3/4 page	17.00	25.00
Full page	22.00	33.00

DEALERS DIRECTORY

1" ad (5 line maximum) \$6.00 for 6 months

Cambridge Crystal Ball assumes no responsibility for items advertised and will not be responsible for error in price, description or other information.

Advertising copy must be in our hands by the 10th of each month to assure publication in our next issue. Advertisements containing reproductions will not knowingly be accepted unless clearly stated.

PLEASE ADDRESS ALL CORRESPONDENCE TO

Cambridge Crystal Ball
 National Cambridge Collectors, Inc.
 P.O. Box 416
 Cambridge, Ohio 43725

PLEASE NOTIFY US IMMEDIATELY OF ANY CHANGE IN YOUR ADDRESS!

Please enclose a self-addressed stamped envelope when requesting information!!

BOOKS FOR SALE

All of the available reference books relating to Cambridge glass can be ordered directly from the Club.

Address your orders for any of the following to:

BOOKS

National Cambridge Collectors, Inc.
 P.O. Box 416
 Cambridge, Ohio 43725

Please add \$1.00 (P & I) on each book order.

(Not required for Price List only orders)

Ohio residents please add 5 1/2% State Sales Tax.

by National Cambridge Collectors, Inc.

1956-1958 CAMBRIDGE GLASS CO. CATALOG REPRINT

(164 page reprint of original catalog)
 Paperback \$6.95

1949-1953 CAMBRIDGE GLASS CO. CATALOG REPRINT

(300 page reprint of original catalog)
 Hardbound with Price Guide \$14.95

1930-1934 CAMBRIDGE GLASS CO. CATALOG REPRINT

(250 page reprint of original catalog)
 Hardbound with Price Guide \$14.95

1978 PRICE GUIDE

for 1930-1934 catalog reprint \$2.00

by Mary, Lyle, and Lynn Welker

CAMBRIDGE GLASS CO.

(120 pages of reprint from 8 old catalogs) \$6.95

CAMBRIDGE GLASS CO. BOOK II

(119 pages of reprint from old catalogs) \$6.95

CAMBRIDGE, OHIO GLASS IN COLOR II

(15 color plates w/descriptions and notes) \$5.95

by Harold and Judy Bennett

THE CAMBRIDGE GLASS BOOK

(96 pages with 50 color plates) Paperback

1903 CAMBRIDGE GLASS CO. CATALOG REPRINT

(106 page reprint of an original catalog) \$7.50

by Charles and Mary Alice Upton

1979 PRICE GUIDE to the CAMBRIDGE GLASS BOOK

(Prices for each item in Bennett book) \$2.00

WE GET LETTERS

Recently, I started collecting the back issues of the *Crystal Ball*. Started with the first 12 issues, and then another 12. It's strange, but the anticipation of getting more old *Crystal Balls* is almost as great as buying another piece of Cambridge Glass.

Whoever thought of making a lot of extra copies of the *Crystal Ball*, I thank you. Those who have become members in the past few years and have not started getting the back issues of the *Crystal Ball* don't know what they are missing — they are like a good book, you can't hardly lay them down until you've read them all.

Sincerely,
Phyllis Hayes

STUDY Club News

STUDY GROUP #8 - SOUTHERN MICHIGAN "THE MICHIGAN CAPRICES"

The Michigan Caprices learned about Diane etching at their January 10th meeting held at the home of Lee and Carol Coppo. Mother and Daughter both collect the Diane pattern, and recently have added many items to their collections.

Selected pieces of Diane were passed very carefully around the room so the members could examine the details. They found the older pieces were much more elaborate with etching in the center of the salad plates and a star in the bottom of the saucers.

Phyllis Hayes passed out a handy dandy shopping guide to Cambridge "Near-Cut", and this will be shared with each of you in a future issue of the "*Crystal Ball*".

Ray and Clara Brown thought it would be nice for our group to work on name tags and registration for the convention. Work on the project will start at the next meeting to be held at the home of Robert and Betty Dasen. Anyone in this area is welcome. Call Betty at (313) 659-3243.

Show and tell items: A Rosepoint #3500/55 basket, covered Wildflower candy dish in light emerald green, Wildflower candlestick, Valencia etching on a small bowl, candlestick #69 in opaque glass, Cambridge Square ash trays and cigarette holder.

Lee is a friend of Margaret and Rankin Cohagen of Bucyrus, Ohio and they lent her a book of photos of their Farberwear collection that was passed around.

We had lunch on the lovely Diane crystal.

submitted by Betty Dasen, Secretary

The Michigan Caprices met at the home of Robert and Betty Dasen on February 7th. Before coming to the meeting members searched to find Cambridge items that were heart shaped or had hearts on them. This is what they found:

#605 Cigarette Box NCC Box (heart on box)

Cambridge Game Set — footed tumbler with heart — Bennett Book

Near Cut heart card tray — Welker II

Caprice No. 169 6" heart — Welker I

Advertised in the "DEPRESSION GLASS DAZE" — Cambridge with Farberware 6½" candles — 1 pr. heart shaped with dark green glass insert, scalloped edge.

The Early American Antique Study Club were guests at the meeting. One of their members is interested in joining our group. They enjoyed the program on Rose Point given by Betty. Twenty-four different pieces of Rose Point were shown as well as a place setting of Rose Point sterling silverware made by Wallace Brothers. The back issues of the *Crystal Ball* were a great help in preparing this program.

Phyllis Hayes brought for show and tell a Near-Cut bowl in the inverted feather pattern.

The March meeting will be held at the home of Frank and Phyllis Hayes. If you are interested in Cambridge Glass, and live in the area, you are welcome to our meetings. Call Betty Dasen at (313) 659-3243.

submitted by Betty Dasen, Secretary

STUDY GROUP #5 - SOUTHERN CALIFORNIA "CALIFORNIA CAMBRIDGE COLLECTORS"

Our January meeting was held at Bill and Betty Losch's house. Our president, Bill, presented slides on Cambridge colors which was very informative. Bill also displayed many lovely items of Cambridge in the colors shown on the slides. The prize this month was a lovely amber ivy ball with 1066 crystal stem won by Bill.

Members shared several new pieces of Cambridge acquired since our last meeting. They were an emerald 3400 salt shaker with crystal top, blue caprice cigarette holder and 4 ash trays in beautiful condition purchased by Betty Wanser for only \$6.00 for the entire set. So bargains are still out there it seems. Beverly Hanson brought along an amber everglades candleholder, crystal caprice large cruet, and a pink caprice ice bucket. She also shared an alpine La Rosa caprice dish.

As usual, Pat Daly had choice items which included an amber eagle flower frog and a beautiful pair of carmen based lamps with gold Diane etching. Joan McDowell shared an optic moonlight blue vase with crystal keyhole stem, forest green double relish with keyhole handles, and a carmen Cambridge square compote.

Our host and hostess then treated the members to a delicious buffet and desserts. The next meeting will be at Herb and Betty Wanser's home.

submitted by Joan McDowell

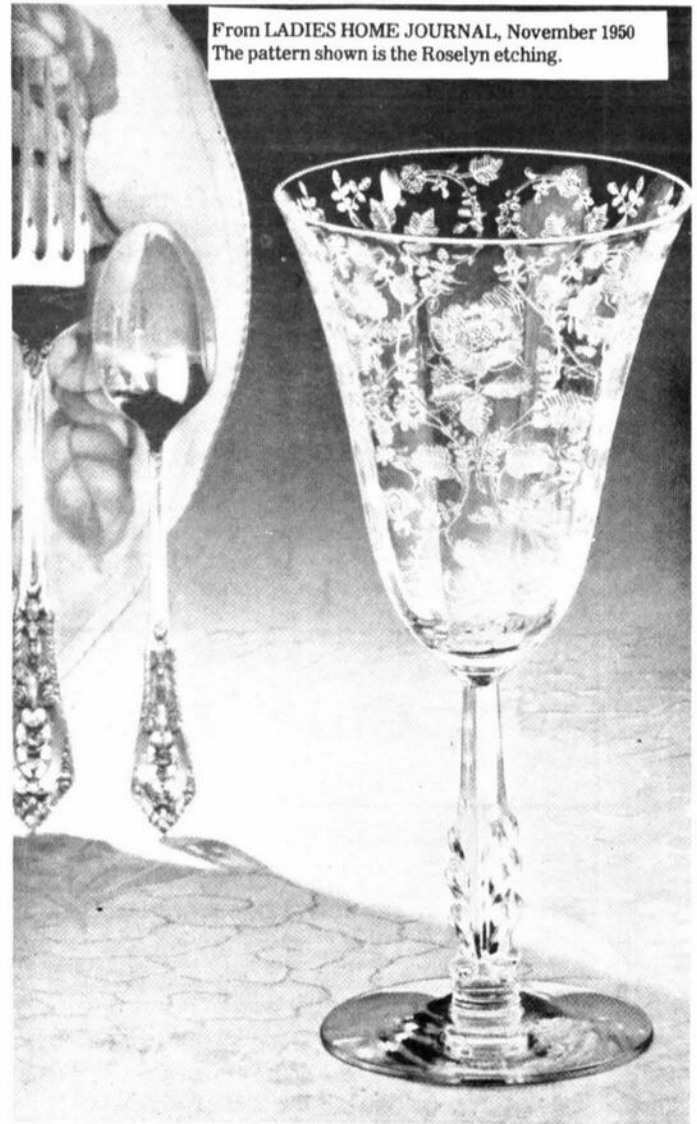
NCC Book Committee

Request

The NCC Color Book Committee is again asking for your help and support. Additional plans have been formulated and we are in need of help in the following specific areas. If you can be of help, please write to us at the club address. Send it to the attention of any member of the committee: Frank Wollenhaupt, Joy McFadden, Bill Smith, or David Rankin.

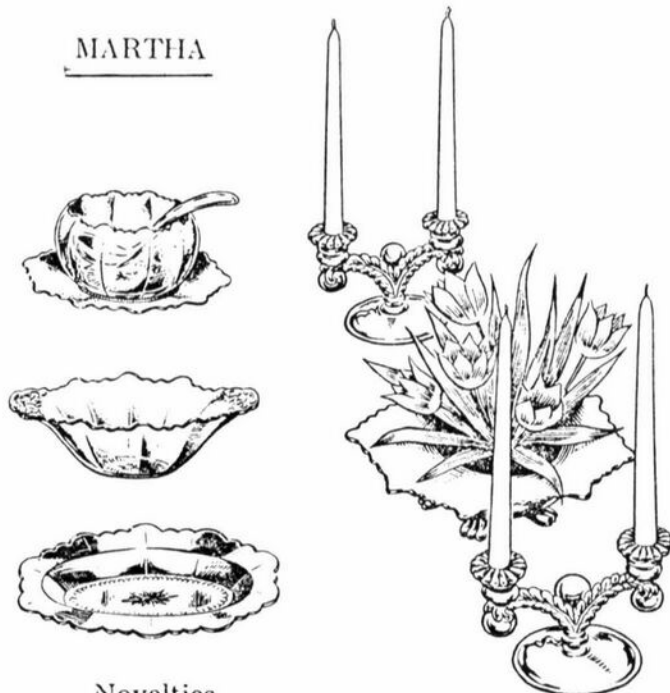
We need:

1. Early Mulberry items (which would probably be in the Near-cut or Community lines)
2. Unusual items in Opaque colors
3. Decorated items in opaque colors
4. Color treatments (such as sprays or flashings) on opaque items.
5. Late Mulberry items (especially lemonade set with handled mugs)
6. Amber Flying Lady Bowl
7. Any items in the unusual blue colors
8. Rubina Candlesticks or Basketweave vases (especially interested in color variations)
9. Colored items in satin finished Everglades
10. Melon Rib decanter in Amethyst
11. Unusal items in Heatherbloom
12. Moonlight Blue items (other than Caprice) and decorated Moonlight blue items
13. Cambridge Arms parts in colors (such as nappies, vases, etc.)
14. Items in Ebon
15. Items in Smoke
16. Complete Geisha Girl Flower Frog and Base



From LADIES HOME JOURNAL, November 1950
The pattern shown is the Roselyn etching.

MARTHA



Novelties

Console Set

where elegance is good taste . . .

Cambridge etched Crystal

Do you aspire to be a perfect hostess . . . with the finest of table appointments for your family and guests? Then, please do consider Cambridge Etched Crystal. Of beauty rare, this exquisite American handmade glassware is truly the crowning touch for festive settings, and the most appreciated of bridal gifts. The delicate lace-like designs are etched on clearest crystal and highlighted for extra brilliance. Choose from eight exclusive open stock patterns, available in complete settings, moderately priced.



Cambridge Bridal Place Setting

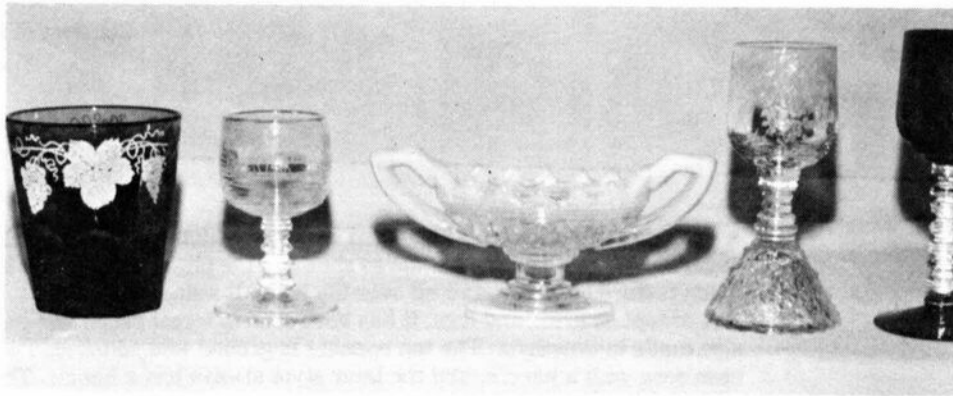
Goblet, Sherbet, Cocktail and Salad Plate in your bride's chosen Cambridge Etching. Attractively packaged for convenient giving, and for protection too.

The Cambridge Glass Company, Cambridge, Ohio



Rare Miniature Items

Shown at 1981 Fall Quarterly Meeting



DESCRIPTION OF ITEMS FROM LEFT TO RIGHT

A #1203 2½ oz. tumbler for whiskey pictured in the NCC 1930-34 Catalog, page 32-23; Forest Green, etched Vintage or Bacchus, an unusual combination. The blank was originally part of the Martha Washington line, but later became part of the Jefferson line. It is signed.

A #1402/13 Tally-Ho 1 oz. cordial, pictured in the NCC 1930-34 Catalog, page 32-33. This cordial is hard to find in any color, but especially as pictured with the Imperial Hunt Scene etching.

This Stratford urn salt #102, pictured in the NCC 1930-34 Catalog on page 42, is in extremely rare emerald (light) green opalescent, signed, and the only known example of this color.

A pressed Rose Point with etched Rose Point top 1 oz. cordial. It is very rare to find the two styles of Rose Point in combination.

This #3112 1 oz. cordial, with royal blue bowl and foot, is from a seldom seen line listed in the 1940 Catalog; same bowl shape as the pressed Rose Point.

Courtesy of Lynn Welker

The following is an excerpt from the booklet entitled "The Art of Making Fine Glassware." The booklet was published by The Cambridge Glass Company, and was loaned to us by member Lena Barnes.

Wine Glassware

White wines should be served in from four to five ounce glasses. Shape of bowls and height of stem are matters of personal taste.

Rhine wines or moselles look well in a tall stem hock glass or roemer with characteristic curved-in bowl.

Special glasses are made for sauternes; however, this wine may be served with good taste in a roemer or four to five ounces stemmed claret.

Sherry, Madeira and Port are generally served in two ounce to two and one-half ounce glasses, although some prefer a three ounce glass for Port.

The favorite glass for Champagne seems to be the saucer shape, hollow stem, although the regular saucer champagne without hollow stem is in quite as good taste.

Claret, Burgundy and similar wines are properly served in a four to five ounce stemmed claret.

A special glass with hollow stem is made for a sparkling Burgundy although this wine may be served in the regular claret glass also, or hollow stem champagne.

Cognac and Brandy may be served in one ounce stemmed glasses or the larger brandy inhaler.

Cordials should be served in one ounce glasses, preferably with stems.

All wines should be served in stemmed glasses.

The only glass served on the table at a formal dinner, which may not match the water goblet is the hock or roemer. All other glasses must be of the same pattern as the water goblet.

If Brandy or Liqueurs are served with coffee after dinner in another room, naturally these glasses would not have to match the general service.

The Unusual In Cambridge Glass

Frog Vase

Courtesy of Lynn Welker



A Frog vase, similar to the Handled Frog vase pictured in the NCC 1930-34 Catalog, page 33-20. The one without the handle as shown in the photo on this page is earlier style and has much texture or wart detail all over the body. It stands 8½"-9" tall, with no detail on front side except on arms and legs. It has been seen in forest green and ebony and was probably also made in amethyst. The top opening is ground and polished. The earlier style has not been seen with a handle, and the later style always has a handle. The later style has been reported in amber.

Everglades Candlesticks

A #2 Everglades 1 lite candlestick in pink opalescent, possibly experimental. Several other items have been seen in this color, including #3 2 lite candlesticks, #10 1 lite candlesticks, and the #41 comport, all in the Everglades pattern which was probably made in the 1930's. The color closely resembles Duncan Miller's pink opalescent and is extremely good quality glass with lots of fire. One is also known in white opalescent.

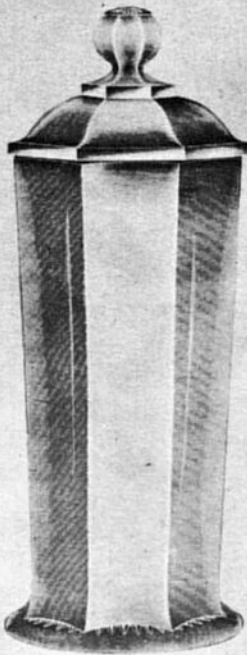


Buddhas



These were made in the late 1920's. The large one on the left stands 7¾" tall. These are very hard to find. Some have a flat base like the one pictured. Others have a large screw-in thread under the base which fits into metal lamp parts or an unusual Cambridge flower frog with metal threads. They have been seen in peachblo, emerald (light) and amber.

The smaller one on the right stands 5½"-6" tall depending on whether the round pedestal under the base is intact. These were sold as bookends or to lamp companies for fitting into lamp parts. Several different styles of lamps have been seen, most with some sort of Oriental decor on them. This size is easier to find than the large size. The colors known are crystal, peachblo, emerald (light), bluebell, blue II, amber and topaz.



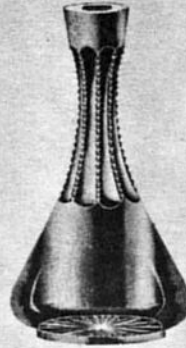
2630. Straw Jar and Cover.



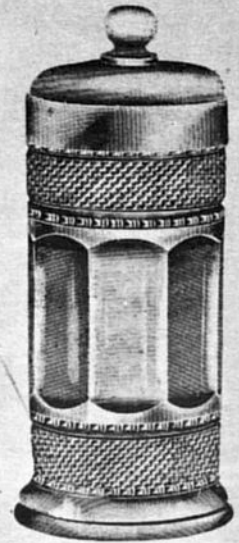
1115. Bitter Bottle, Blown.
 Plain or Engraved.
 Capacity, 11 oz.



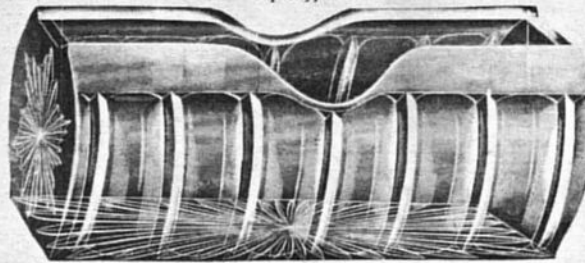
1125. Bitter Bottle, Pressed.
 Capacity, 9 oz.



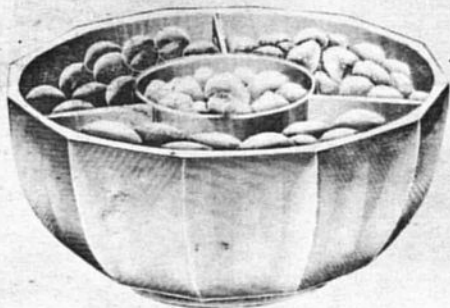
1116. Bitter Bottle, Blown.
 Plain or Engraved.
 Capacity, 9 oz.



2719. Straw Jar and Cover.



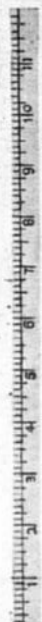
2762. Sanitary Straw Tray.
 Length, 10 in.



2. Crushed Fruit Bowl.
 With Slotted Cover for Spoon.



1. 9 in. Crushed Fruit Bowl and Cover.
 2. Same as 1, only Divided into
 4 Compartments.



2630
 Tall Crushed Fruit Bowl and Cover.



2762½. Sanitary Crushed Fruit Bowl and Cover.
 Bowl has Special Inside Rim to prevent liquids
 from gathering on Cover.



2800
 Crushed Fruit Bowl and Cover.



—and here is Your Favorite Old Pattern in

Roylace Shelf Paper

NEW GLASS

SO MUCH in the mode, so great the appeal, that new pressed glass of equal charm and in the same radiant patterns is herewith made available to countless smart American homes. Within the reach of all for handsome services or that occasional table ornament, today's reproductions of old glass will appease the hearts of many who lack the opportunity or the hardihood for peregrination ever necessary in collecting antiques. The charming old shapes, as well as the patterns, have been painstakingly reproduced. You will find these items in your favorite store or decorating shop.

Above are fine examples of thumb-print glass in the Williamsburg tradition, and a fine beaded design. Covered dishes, decanter, pitchers, and plates—all are true to their predecessors. Mermaid candlesticks and amusing little boots complete the collection. All the pieces in this group are from Mitteldorfer Straus.

On top shelf, right, is a collection of milk glass, including pieces in Jewel and Swan patterns from the Westmoreland Glass Company. On the center shelf are copies of Sandwich glass from Duncan & Miller; and glass hats, a Victorian hand vase, and waffle goblets from George Bassett & Company. On the bottom shelf are pieces in Fostoria's Americana pattern, Cambridge's Virginia and Mt. Vernon, and an egg-and-bar decanter with goblet from Cataract-Sharp.

Photographs by F. M. DEMAREST





No. 3790 — SHERBET



No. 3790 — CORDIAL



No. 3790 — WINE



No. 3790 — 12 OZ. FTD. ICE TEA



No. 3790
5 OZ. JUICE OR CLARET



No. 556 — 8" SALAD PLATE

No. 3790 — COCKTAIL

No. 3790 — GOBLET

Victory

PLATINUM BAND

Triumph

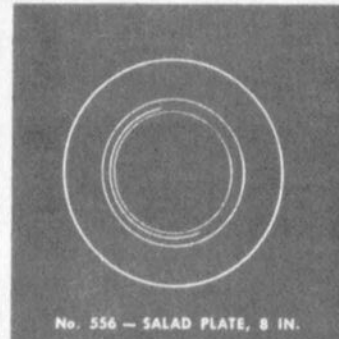
DECORATED PLATINUM BAND



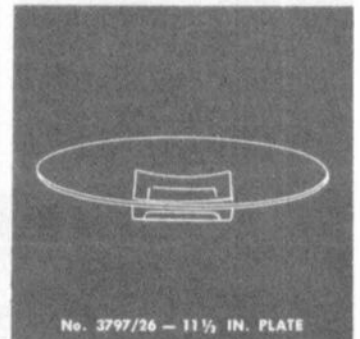
No. 3797/57
11 IN. SALAD BOWL



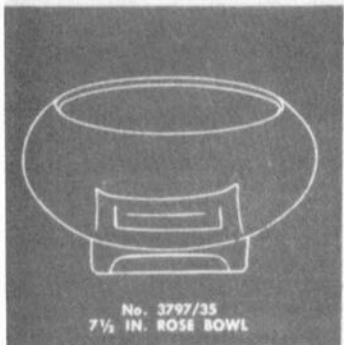
No. 3797/129
3 PC. MAYONNAISE SET



No. 556 — SALAD PLATE, 8 IN.



No. 3797/26 — 11 1/2 IN. PLATE



No. 3797/35
7 1/2 IN. ROSE BOWL



No. 3797/41 — SUGAR & CREAM



No. 3797/48 — 10 IN. OVAL DISH



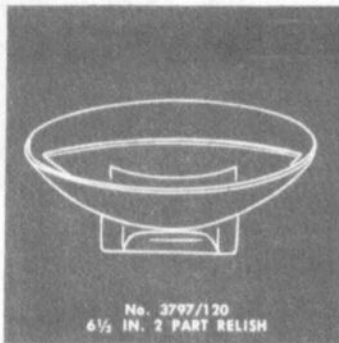
No. 3797/54 — COMFORT



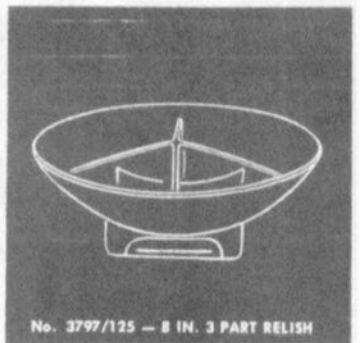
No. 3797/80
8 IN. FTD. BUD VASE



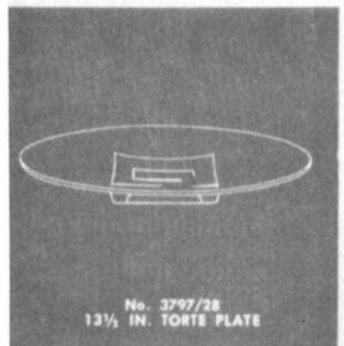
No. 3797/100 — 4 1/2 OZ. OIL



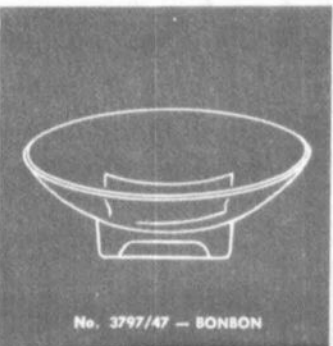
No. 3797/120
6 1/2 IN. 2 PART RELISH



No. 3797/125 — 8 IN. 3 PART RELISH



No. 3797/28
13 1/2 IN. TORTE PLATE



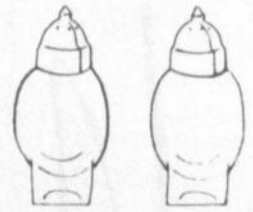
No. 3797/47 — BONBON



No. 3797/126 — CELERY & RELISH



No. 3797/165
CANDY BOX & COVER



No. 3797/76 - SALT & PEPPER



No. 3797/67 - CANDLESTICK

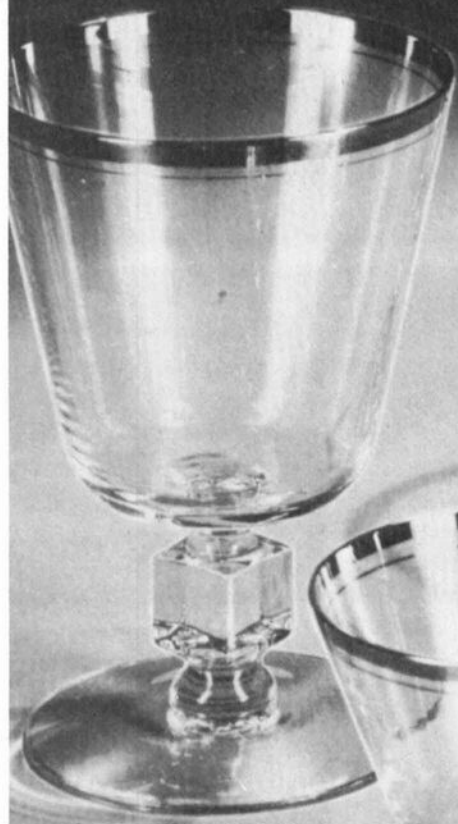


No. 3797/103 - CELERY



No. 3798 - 12 OZ. FTD. TUMBLER

No. 3798 - SHERBET



No. 3798 - GOBLET



No. 3798 - COCKTAIL



No. 3798 - 5 OZ. FTD. TUMBLER



GOLD BAND EDGE WITH HAIRLINE

Wedding Band



No. 3109 — 6 OZ. TALL SHERBET



No. 3109 — 4 OZ. CLARET



No. 3109 — 3½ OZ. COCKTAIL



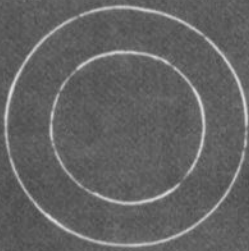
No. 3109 — 1 OZ. CORDIAL



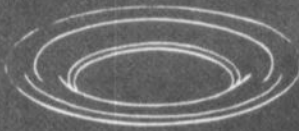
No. 3109
4½ OZ. OYSTER COCKTAIL



No. 3109 — 12 OZ. FTD. ICE TEA



No. 555 — 7½ IN. PLATE



No. 556 — 8 IN. PLATE



No. 3109 — 6 OZ. LOW SHERBET




No. 3109 — 3 OZ. WINE




No. 968 — 2 PC. COCKTAIL ICER

Sandy Hunnicutt of Owatonna, Minnesota sent us this copy of an old brochure advertising Cambridge Rose Point. A long list of Rose Point items and pictures were included, but unfortunately they were not clear enough to be re-printed. The portion we have included here has before been published in the *Crystal Ball*, but for the benefit of many of our newer members we have repeated it as best we could and thank Sandy for sharing it with us.



Rose Point



Rose Point


A magic word - a word to conjour visions!
 Brides of Yesterday in hoop skirts! Brides of Today in slender silhouettes. Brides of royal blood resplendent, glorified - adorned for the altar in bridal veils of Rose Point lace!

Rose Point lace is made entirely by hand by the peasants of Belgium, requiring infinite skill and patience. Years are sometimes required to complete a single pattern, and many hands have a part in the making. The finest of cotton thread is used and so delicate is the design that magnifying glasses are worn by the workers. It is never washed as water would destroy its perfect texture. The younger generation of Belgians have neither the patience nor the inclination to perform so tedious a task, so Rose Point lace is becoming increasingly rare.

And there is another Rose Point luxury of brides, less rare, less costly, but beautiful and distinctive - CAMBRIDGE ROSE POINT CRYSTAL!

THE CAMBRIDGE GLASS COMPANY, CAMBRIDGE, OHIO

GIFT & ART SHOP
 FARIBAULT, MINN.



FLOWER FROGS WANTED

Describe Giving
 number, color, clear or frosted, base details and price.

MINT CONDITION ONLY
 ALL OFFERS WILL BE ANSWERED

M. SCHNEIDER, 2982 CHERYL ROAD, MERRICK, NEW YORK 11566

UNIQUE CAMBRIDGE COLLECTION FOR SALE

Rubina bowl signed - 10"	\$150.00
Crown Tuscan 7" nude-stem candy comport	\$135.00
Crown Tuscan 12" ring-stem vase	\$60.00
Crown Tuscan 5" Cornucopia	\$35.00
Crown Tuscan Fyling Lady Bowl with matching nude stem 9" sticks (very rare)	\$365.00
Crown Tuscan divided candy dish	\$45.00
Cobalt vase with sterling silver base - 10"	\$55.00
Cobalt ball jug - Farber base - 8 oz.	\$30.00
Cobalt mayonnaise with Farber base	\$25.00
Cobalt ivy ball - 8" - ring stem	\$40.00
Carmen ring stem vase - 9"	\$35.00
Carmen nude-stem banquet goblet - 9"	\$125.00
Amethyst ring stem vase - 12" (slight chip)	\$25.00
6" amethyst ivy ball	\$35.00
Amethyst sherbert	\$18.00
Amethyst cordial set - with 5 cordial glasses (with original stickers)	\$85.00
Moonlite blue signed divided relish dish	\$22.50
Moonlite blue signed 8" bowl	\$20.00
Azurite 6" bowl - gold overlay with black base	\$45.00
10" Azurite bowl with gold overlay, base and 8" matching sticks	\$125.00
Tomato vase - 10"	\$135.00
Mandarin gold 8" ring stem ivy ball	\$35.00
Smoke nude stem compote - 7"	\$130.00
Peachblow Rams head bowl with matching 6" ram's head sticks (rare)	\$285.00
Peachblow sandwich plate - decagon shaped	\$18.00
Crystal lemon plate signed	\$12.00
Jade bowl - 7" with base	\$35.00
Heliotrope bowl - 6" - with base	\$27.50
Ebony signed 6" handled candy bowl	\$15.00
Tumble up - "experimental green" (rare)	\$50.00
9" ivory bowl with stand	\$40.00
Milk glass Nautilus vase - 8" (with original Cambridge sticker)	\$85.00
Crystal etched Ram's head bowl with matching ram's head sticks (very rare)	\$365.00
Krystal 80 ounce ball jug with 4 matching tumblers	\$75.00
Ebony 8" stick	\$15.00
Farber nude stem candy comport - 8" - amethyst	\$35.00
Jade 10" bowl with base and matching twisted 9" sticks	\$90.00
Avacado - 10" bowl with gold overlay and base (very rare)	\$100.00
Crystal cream & sugar with ebony holder	\$25.00
Pink mayonnaise bowl with ladle and underplate	\$25.00
Apple-green Caprice tumble-up	\$30.00
Cobalt tumbler	\$12.00
Smoke tumbler - Georgian (original Cambridge sticker)	\$15.00
Mandarin gold goblet	\$12.00
Amethyst tumbler - Georgian	\$10.00
Light Emerald Farber based candy comport	\$15.00
Sugar and creamer - Portia etch with gold overlay and matching footed candy box	\$85.00
Sugar and creamer - amethyst with Farber base	\$30.00
Light emerald Mayonnaise set with ladle and underplate - etched	\$35.00

All mint condition unless otherwise specified. Will ship.

Contact Gary Owen, 1593 Bond St., Akron, Ohio

(216-864-5429)

Will discount if interested in entire collection.

STAGE COACH ANTIQUE MALL

(formerly White Pillars Antiques)

7525 East Pike

Norwich, OH 43767

614/872-3720

MANY DEALERS

PLENTY OF PARKING

WIDE SELECTION OF GLASS

AND POTTERY

FURNITURE AND

GENERAL LINE!

BUY ----- SELL ----- TRADE

OPEN YEAR ROUND

Weekdays - 10 AM - 5:30 PM

Sunday - 12 noon - 5:30 PM

Summer Evening Hours - by Chancel

Located 9 miles E. of Zanesville, OH, on I-70 to Norwich
Exit #164 - then 1/2 mile W. on Route 40.

— Classified —

FOR SALE: Various pieces of Cambridge CAPRICE CRYSTAL. R. Haist, 711 Louisa, Burlington, Iowa 52601, Phone 319-752-5705.

FOR SALE: 12 sets BLOSSOMTIME cups and saucers — \$20 per set. 3" Black Swan — \$95. Betty Maki, 1155 Willow St., #24, Faribault, MN. 55021 (507) 334-4457.

WANTED: CAMBRIDGE ROYAL BLUE — Anything — but love Nude Stem items. If you see Cobalt — think COBALT CAROL Markowski, 3141 West Platte Ave., Colorado Springs, CO 80904.

BUYING: CAMBRIDGE ROSEPOINT; Depression Glass; Heisey Rose and Orchid; and Fostoria etched dinnerware. Also glass figures and unusual pieces. Nadine Pankow, 207 S. Oakwood, Willow Springs, IL 60480. Phone: 312/839-5231.

DEALERS



DIRECTORY

NOTE: When writing to the Dealers listed here, please enclose a SASE!

<p>EVELYN M. ALLEN 135 Cynthia Street Heath, Ohio 43055 Mail Order & Shows 614-522-1635 SPECIALIZING IN CAMBRIDGE GLASS!</p>	<p>BENICIA ANTIQUE SHOP 305 First Street Benicia, California 94510 OPEN 11 AM - 5 PM Closed Monday Z. E. LOPES 707-745-0978 VISIT HISTORIC BENICIA and its 28 shops Off Interstate #80 North of San Francisco</p>	<p>CHARLES MIKULIK Box 416 Elizabeth, N.J. 07207 — COLLECTOR — Always paying good prices for CAMBRIDGE CAPRICE in all colors 201-688-1144 CARRY MOST TYPES OF ANTIQUES</p>
<p>BLACK ROOSTER ANTIQUES 1018 Clark Street Cambridge, Ohio 43725 614-432-3202 M. Sipe CAMBRIDGE GLASS - GENERAL LINE</p>	<p>ANDREJCAK'S ANTIQUES 14533 Bayes Ave. Lakewood, Ohio 44107 Joe & Karen Andrejcek 216-226-3417 SHOWS ONLY — CAMBRIDGE — FENTON — CHINA</p>	<p>A. SPRINGBORN 5434 Windridge Lane Orlando, Florida 32810 SHOP No. 34 — WEBSTER, FL Open Every Monday 305/298-3011</p>
<p>BERKELEY ANTIQUES 69 Berkeley St. Boston, MA 02116 George or Frank 617-426-1048 CAMBRIDGE, HEISEY, GENERAL LINE</p>	<p>THE HITCHING POST 7467 S. R. 88 Ravenna, OH 44266 Ph. 216-296-3686 D. McDaniel CAMBRIDGE — HEISEY — GENERAL LINE</p>	<p>FINDER'S KEEPER'S ANTIQUES P.O. Box 303 P.O. Box 16023 Dayton, O. Columbus, O. 45401 43216 513-254-2937 614-885-2726 SPECIALIZING IN CAMBRIDGE GLASS!</p>
<p>D & D ANTIQUES Columbus, Ohio DICK SLIFKO SHOWS ONLY</p>	<p>GEORGE HOFFMAN ANTIQUES 129 South 4th Street Newark, Ohio 43055 614-345-8021</p>	<p>OUR GLASS ANTIQUES Box 27, Wills Point, Texas 75169 20th CENTURY COLLECTIBLES featuring CAMBRIDGE GLASS! Shows - No Lists - SASE Please PAUL & GINNY HENDERSON 214-873-4190</p>
<p>THE GLASS CUPBOARD 39 Shire Oaks Drive Pittsford, New York 14534 Marcia Ellis 716-586-7596 CAMBRIDGE ONLY SASE FOR LIST</p>	<p>S & J GLASS 10629 Main St., Fairfax, VA 22030 Janet & LeRoy Sanders 703/273-8579 BUY & SELL: DEPRESSION, CAMBRIDGE, HEISEY, DUNCAN & FOSTORIA GLASS</p>	<p>1886 HOUSE East Schodack, N.Y. 12063 MAIL and SHOWS Laurie Cruise 518-477-5895 CAMBRIDGE - NORITAKE - AZALEA - D.G.</p>
<p>KILPATRICK'S ANTIQUES Lu & Dori 400 W. 6th St., Bloomington, IN 47401 Res. 812/332-8754 Shop 812/339-1120 We buy one piece or collections</p>	<p>ROLLING ACRES ANTIQUES 66484 N. 8th Street Road Cambridge, Ohio 43725 Sandy Jenkins & Anne Ingram 614-432-2570 CAMBRIDGE & GENERAL LINE ANTIQUES</p>	<p>BILL & SHARON PHILLIPS 21730 Priday Euclid, Ohio 44123 Ph. 216-261-4665 Shows Only BUYING GLASS, ANTIQUES, ETC.</p>
<p>joyce's antiques Bought and Sold Specializing in HEISEY • CAMBRIDGE • VERLYS • AMERICAN GLASS P.O. Box 114, Albertson, N.Y. 11507 (516) 499-3396</p>	<p>AL STEELE Westerville, Ohio 614-882-6483 or 614-882-7124 Mail Orders and Shows Only HEISEY — CAMBRIDGE — PATTERN GLASS</p>	<p>SWISS HILLS COLLECTIBLES 303 Guilford Ave., Woodfield, OH 43793 Mary & Wilbur Henderson 614 472-1133 SPECIALIZING IN CAMBRIDGE GLASS Shows, Mail & Stagecoach Antique Mall</p>
<p>CHARLES A. SHAW Glenwood Gardens - R.V.W.1B Yonkers, NY 10701 AMERICAN GLASS — 914-476-5175 SHOWS & MAIL ORDER'</p>	<p>SHIRLEY S. LADOUCEUR Antiques and Collectibles Specializing in Cambridge Glass BY APPOINTMENT 7597 Daphne Drive 315-458-5297 No. Syracuse, NY 13212</p>	<p>GREEN ACRES FARM Antiques, Crystal Glass & Collectibles Sat. & Sun. 1-7 PM (614) 927-1882 2678 Hazelton Etna Road (State Route 310 North) Pataskala, Ohio 43062</p>



National Cambridge Collectors, Inc.

P O Box 416, Cambridge, Ohio 43725

A nonprofit organization dedicated to the preservation and study of Cambridge Glass

The National Cambridge Collectors, Inc. is proud to present an original film produced by the Cambridge Glass Co. in the 1950's. The film is entitled THE CRYSTAL LADY. It is a most interesting film and includes pictures of the factory and the workers making the fine Cambridge Glass. It is a 16mm sound movie that runs about 40 minutes.

The following 5 slide presentations are now available:

- No. 1 is on the Display rooms and close-up shots of particular pieces of interest.
- No. 2 is of different stems made by Cambridge Glass Co.

No. 3 covers Cambridge Glass candlesticks.

No. 4 is of Cambridge colors.

No. 5 presents Cambridge Glass figurals.

These 5 presentations are available in Kodak carousel slide trays and are supplied with narratives on each slide.

NOTE: NCC Study Clubs may use these presentations free of charge except for postage to and from destination.

TO RESERVE PLEASE CHECK THE ITEM (OR ITEMS) DESIRED.

MAKE CHECK PAYABLE TO: NATIONAL CAMBRIDGE COLLECTORS, INC.

THE CRYSTAL LADY and all 5 slide presentations have a deposit fee of \$25 and a rental fee of \$15 which will be deducted from the deposit fee.

THE CRYSTAL LADY

No. 1 Display rooms and particular pieces

No. 2 Stems

No. 3 Candlesticks

No. 4 Colors

No. 5 Figurals

TOTAL DEPOSIT FEE:

NAME OF ORGANIZATION:

ADDRESS:

CITY & STATE:

ZIP

DATE NEEDED:

National Cambridge Collectors, Inc.

P. O. Box 416 Cambridge, Ohio 43725

FIRST-CLASS MAIL
U.S. POSTAGE
PAID

Cambridge Ohio
43725
Permit No. 1

FIRST CLASS MAIL



**1982 Convention
&
Antique Show & Sale**

June 25, 26, 27, 1982

**Shenandoah Inn,
Old Washington, Ohio**