

Cambridge



Crystal Ball

ISSUE NO. 108

APRIL 1982

Published monthly by the NATIONAL CAMBRIDGE COLLECTORS, Inc.
To encourage and to report the discovery of the elegant and boundless product
of the Cambridge Glass Company, Cambridge, Ohio

MUSEUM TO OPEN

Can you believe our MUSEUM is finally going to open? Bill Harbaugh says "Yes — during this year's Convention." Unless there is some unforeseen delay, ribbon cutting is planned for Friday, June 25th at 3:30 PM, immediately followed the Glass Factory Tours. Try to make plans to attend the Convention and Show, and arrive early on Friday so you can be a part of this event.

At the February Quarterly Meeting we indicated we would have the MUSEUM open the first day of the Convention. Many people questioned me the following day as to whether that was a possibility. The only thing I could tell those people and anyone else with doubts, is that from knowing Bill Harbaugh as I do, I am sure if he says he will have it open for Convention, it will be open. Since the first of the year we have accomplished quite a lot which cannot necessarily be seen from outside. That part has been delayed until the weather gets a little better. We worked in the building, it seemed like forever, tearing out, moving in, and changing, and it seems like we hadn't accomplished anything. Then all of a sudden when we got the insulation in and covered with dry wall, and furnace runs in and operating (thanks to Ed Embree), we began to see the fruits of our labor. Now it seems when we do something it counts.

We had several members who made financial contributions during 1981 to help with the renovation. Also, many members donated items for the Mini-Auction and glass to be exhibited in the MUSEUM. We again thank all of you for your generosity. The names of the 1981 contributors were read at the February Quarterly Meeting and appear elsewhere in your *Crystal Ball* in the minutes. If anyone's name has been omitted, it is unintentional. I assembled the list from the records I had at home and they may not have been complete.

We still are in need of any help that you can give, whether it be financial, materials, glass for the MUSEUM, or a few hours of your time to help with the work. Mr. D.D. Rummel told us at the Quarterly Meeting that he would pay for half of the material cost for the ceiling which we estimated would cost \$250. Thank you D.D.

The Auction report will also appear elsewhere in your *Crystal Ball*, but I would like to take a little space to thank Lynn Welker and all of his helpers who again made the Auction such a success for the Club. I would like also to thank everyone who attended and especially those who traveled from surrounding States to be a part of it all. The Oldhams, who hail from Annapolis, Maryland may have gone home empty handed from the Auction, but Portia was the winner of the Cambridge Square salt and pepper shakers awarded to the person coming closest to guessing the gross sales of the Auction. She did a good job of guessing, or knew what she was doing, because she only missed it by \$86. She guessed \$10,242 and the total sales were \$10,156.

One last word. Your Convention registration form is in this issue of the *Crystal Ball*. Make plans to attend the most important Convention ever, fill out your registration form, and please send it in as soon as possible so there isn't any last minute hurry to meet the deadline. I am looking forward to seeing all of the familiar faces there along with a lot of new ones.

your President Willard



MEMBERSHIP RENEWAL NOTICE

If the date on your
address label is - -

4-82

This is your LAST ISSUE of the CRYSTAL BALL.

Please renew NOW!

CAMBRIDGE CRYSTAL BALL

Official publication of National Cambridge Collectors, Inc., a non-profit corporation with tax exempt status. Published once a month for the benefit of its members.

Membership is available for individual members at \$10 per year and additional members (12 years of age and residing in the same household) at \$3 each. All members have voting rights, but only one *Crystal Ball* will be mailed per household.

Back issues of the *Crystal Ball* are available (beginning with Issue No. 1, May 1973) for members only. Cost: \$.60 each or 12 issues for \$7.

1981-82 OFFICERS & COMMITTEE CHAIRPERSONS

PRESIDENT Willard Kolb
 VICE-PRESIDENT Josephine Barstow
 SECRETARY Janice Hughes
 TREASURER William Smith
 SERGEANT-AT-ARMS Don Armbrrecht

BOOK SALES Meg Turner
 BUDGET & FINANCE David Rankin
 BY-LAWS David Rankin
 CONVENTION Josephine Barstow
 MEMBERSHIP Phyllis Smith
 MUSEUM Billy Harbaugh
 PROGRAM & ENTERTAINMENT Frank Wollenhaupt
 PROJECT Willard Kolb
 PUBLIC RELATIONS William Smith
 PUBLICITY Joseph Andrejcek
 STUDY GROUP ADVISORY Jack Rettig
 1982 ALL-CAMBRIDGE AUCTION Lynn Welker
 1982 ANTIQUE SHOW Joy McFadden

CRYSTAL BALL EDITOR Peg Gotschall

CLASSIFIED ADVERTISING RATES

5c per word \$1.00 minimum
 We cannot mix type size in classified advertisements. Abbreviations and initials will count as words. Payment in full MUST accompany all ads.

DISPLAY ADVERTISING RATES

	Members	Non-Members
1/8 page	\$ 4.00	\$ 6.00
1/4 page	7.00	10.00
1/2 page	12.00	18.00
3/4 page	17.00	25.00
Full page	22.00	33.00

DEALERS DIRECTORY

1" ad (5 line maximum) \$6.00 for 6 months

Cambridge Crystal Ball assumes no responsibility for items advertised and will not be responsible for error in price, description or other information.

Advertising copy must be in our hands by the 10th of each month to assure publication in our next issue. Advertisements containing reproductions will not knowingly be accepted unless clearly stated.

PLEASE ADDRESS ALL CORRESPONDENCE TO

Cambridge Crystal Ball
 National Cambridge Collectors, Inc.
 P.O. Box 416
 Cambridge, Ohio 43725

Janice Hughes, Secretary Phone 614-432-7823

Willard Kolb, President Phone 614-695-0695

PLEASE NOTIFY US IMMEDIATELY OF ANY CHANGE IN YOUR ADDRESS!

Please enclose a self-addressed stamped envelope when requesting information!!

Club News

National Cambridge Collectors, Inc.
 Quarterly Meeting
 February 26, 1982
 Shenandoah Inn, Old Washington, Ohio

The meeting was called to order at 8:05 P.M. by President Kolb. In attendance were 57 members and guests and 9 Board of Directors.

The minutes of the November 7, 1981 meeting were read by Janice Hughes and approved.

The Treasurers report was given by Bill Smith showing the Operating Equity to be \$13,135.74 and the MUSEUM Equity \$70,178.60.

COMMITTEE REPORTS:

BY-LAWS: No report.

CONVENTION: Chairman Jo Barstow reported Sid Garrett, former Cambridge Glass employee, will speak on cuttings at the Saturday morning breakfast. Dr. James Measell will speak at the Banquet on "There's More to Glass Collecting than Just Collecting Glass." All committees have been appointed. The Display Room will be on the color green.

CRYSTAL BALL: Editor Peg Gotschall reported the 1956-58 Catalog Reprint will be completed in the next issue. This means there will be extra pages to fill. She needs articles, pictures, etc.

MEMBERSHIP: Chairman Phyllis Smith reported as of February 26 we have 1155 members. The deadline for the membership contest is June 1. She also asked if anyone would suggest a topic she would do the research and write an article.

PROJECT: Chariman Kolb reported there are still book ends and post cards for sale. The next book end will probably be the eagle. There will be a mini-auction at the Friday get acquainted party at Convention if anyone wants to donate glass.

Bill Smith reported the Price Guide for the 1930-34 Catalog Reprint will be printed with the re-printing of the catalog. The 1949-53 Catalog Reprint Price Guide should be ready by Convention. He also stated the Color Book Committee is working on the format for the new book consisting of 60 color pages. More information will be in the next *Crystal Ball*.

PUBLICITY: Chairman Joe Andrejcek reported articles regarding the Quarterly Meeting and Auction will be in the major publications.

BUDGET AND FINANCE: No report.

MUSEUM: Chairman Bill Harbaugh reported the wiring and dry wall is almost completed. The MUSEUM will be ready by Convention.

President Kolb reported the following donations were made during 1981.

Norma Oliver, Stuttgart, Ark. \$50.00
 Carrie & Wesley Stone, Larkspur, Ca. \$40.00
 Frank & Phyllis Hayes, Swartz Creek, Mich. \$150.00
 California Cambridge Collectors Study Group, \$300.00

Donations to Mini-auction and MUSEUM: Mark Nye, Bernard Boyd, William & Phyllis Smith, Jan Hughes, Joe Andrejcek, Jean Carter, Mary & Wilbur Henderson, Deanne Gray, Doris Isaacs, Evelyn Allen, Cambridge Squares, Jack Conner, Al Springborn, George Fogg, Frank Maloney, Marcia Ellis, Tally Ho Study Group, Laurie Cruise, Charles Shaw, W.T. & Joyce Dawson, Michigan Caprice Study Group, Donald Spencer, Virginia Houston, Al Steele, Mr. J.P. Martin, D.D. Rummel and Richard Slifko.

PROGRAM: No report.

AUCTION: No report.

SHOW: No report.

PUBLIC RELATIONS: Bill Smith reported they were at the Show in Columbus, Ohio in February and will be at the Clearwater, Fla. Show in March.

FLEA MARKET: Chairman Larry Hughes reported 13 spaces inside are rented at this time.

NOMINATING COMMITTEE: Chairman Bill Smith reported the nominations are as follows:
David Rankin, Englewood, Ohio
Bill Smith, Springfield, Ohio
Frank Wollenhaupt, Dayton, Ohio

Board members whose terms end in 1982 are the same as those nominated.

OLD BUSINESS: None

NEW BUSINESS:

President Kolb announced the floor open for nominations. There were none.

President Kolb closed the nominations.

President Kolb announced plans for the Cambridge Glass Factory mini-mall and flea market are halted at this time due to State specifications.

Show & Tell was presided over by Lynn Welker.

President Kolb conducted the mini auction.

Lynn Welker presented a program on the rare and unusual items in the Auction.

A motion was made by Bill Smith to adjourn at 9:50 P.M.

Janice Hughes
Secretary

BANQUET TABLES

Console bowls and candlesticks are needed for our Convention Banquet Tables. This year's colors are topaz, any Cambridge green and crystal. If you have any sets or single pieces you could share, PLEASE contact: Gail Grabow, P.O. Box 416, Cambridge, Ohio 43725, or call her at 614-439-3061 as soon as possible. PLEASE HELP so our tables will be as beautiful as they were last year!

CONVENTION HI LITES

At this time the excitement of Auction is over and my thoughts are all on Convention. We are planning a bigger and better Convention this year and with your help it will be.

As usual we will need all the volunteers we can get as this involves many of you and helps us a great deal. We also do need your glass for the Display Room. Be sure to send your list back as soon as possible.

Friday Early Birds — Every year everyone has really enjoyed touring the Boyd and Mosser Glass Factories. That will remain the same. "Plus" our MUSEUM Chairman Bill Harbaugh has really been working hard this year to get the building ready for Grand Opening while so many of our out of state members are here. So along with tours, Bill wants us at the MUSEUM for a Gala Opening at 3:30 PM. We have all worked so long for this Big Day. Let's all show Bill how much his efforts are appreciated.

The Saturday morning speaker is Mr. Sid Garrett, former worker at the Cambridge Glass Plant. He will talk about "Cambridge Cuttings." Saturday's Banquet speaker will be Dr. James S. Measell whose topic is "There's More to Glass Collecting than just Collecting Glass."

This year we also have made arrangements for a Hospitality Room. On hand will be coffee fixin's and soft drinks all on a donation basis, with plenty of room to sit and talk glass — Cambridge of course. Please feel free to use it.

Have you made reservations at Shenandoah? If not, do it now. We do have more seating for each function, but rooms are going fast.

The Michigan Caprices Study Group is handling registration this year. Those of you who were here last year will remember they were the very able group who greeted you at each function. It was so appreciated that they got another job this year. We still have our deadline with Shenandoah, so registrations still need to be in by June 10th. Please help us by getting them in early. I hate to see anyone disappointed.

Come and enjoy with me — Your Convention Chairwoman, Jo Barstow

Bill Smith was a patient in the hospital several weeks before the 1982 Quarterly Meeting & Auction. He had recovered enough to be dismissed and be able to attend. However, he was scheduled for further tests during the following week, so many people left him concerned about the outcome. We have received word that the results of the test were good. His Doctors gave approval for him and Phyllis to make their scheduled trip to Florida for a Glass Show. We're happy for his good recovery and wish him good health in the future.

Bill's mother, Myrl Hill had also been a hospital patient but has now been dismissed and is getting along well.

Sorry to hear Sue Rankin was a patient at Good Samaritan Hospital in Dayton. Hope she is home and feeling better by now. Her NCC friends all wish her well!

PLEASE HELP

The NCC Color Book Committee is again asking for your assistance. If you live a distance away, you can still loan items to be photographed and be a part of the NCC Color Book Project.

Details are still incomplete as to when and where the photography is to be done. We are completing the lists of items available to us in each color. Response from all of you has not been exciting to this point, and we want to include as many club members as possible.

We have formulated a plan in which you can mail your items to us for photography and we will ship them back to you and pay the return postage. But **first**, we need to complete our list of available items. Please refer to the past two issues of the *Crystal Ball* for the list of items we need and then write to us. **DO IT NOW!**

Send list to NCC address, in care of Color Book Project.

Thank you,
Committee Members
Frank Wollenhaupt, David Rankin
Joy McFadden, and Bill Smith

DISPLAY ROOM

The 1982 Display Room Committee is asking for your help with this year's display. GREEN will be the theme color. Greens included are: jade, pomona green (avocado), pearl green, light emerald, old emerald (as in Near Cut), topaz, forest green, pistachio and dark emerald.

If you are willing to display any pieces of your glass, please complete the Display Room Glass Form on the back of this issue of the *Crystal Ball*. As in the past, all pieces will be insured. Due to space limitations and obtaining insurance, we can only accept glass that has been listed with the committee prior to the Convention.

If you do not have glass to display, you could share your time to watch the Display Room.

Please fill out and mail your Display Room Form no later than May 1st.

1982 Display Room Committee:
Bill Harbaugh, Lynn Welker,
Jan Hughes, Jo Barstow

MOTEL REMINDER

Rooms at the Shenandoah Inn are filling fast, so if you have not made reservations you should do so immediately. Write to: Shenandoah Inn, P.O. Box 147, Old Washington, Ohio 43768 or Phone 614-489-5511.

They are offering a special rate of \$16.73, tax included, for single room for double occupancy, so be sure to mention your NCC affiliation when making your reservations.

STUDY Club News

STUDY GROUP #6 - NEW YORK STATE "THE FINGERLAKES"

The Fingerlakes Study Group met at noon on Saturday, February 13th at the home of Marcia and Bob Ellis. It was one of the sunnier days of this winter — but what did we do? We submerged into the lower level and studied, perused, compared, and talked for the next four hours. The dates and topics for the next four meetings were discussed and firmed up since this had been our first meeting since October due to bad weather, vacations, Holidays, bad weather, more bad weather.

Shirley Ladouceur presented a program on Cambridge opaques that was most informative. Samples of the various colors were easily available, and out of the fourteen colors discussed, we were able to present examples of nine of them. Following the topic, there was a brief Show & Tell that resolved the manufacturer of a pair of 3-lite candlesticks, and an unresolved determination on a piece of Near Cut. We'll leave this item up to our very capable Show & Tell Committee at Convention Time! A carmen ball decanter and six 2½ oz. tumblers were proudly shown by their owners. The meeting adjourned to a nearby restaurant for dinner, and our next meeting will be in Syracuse, NY on April 18th. At that time Donald Ladouceur will present our program on Rock Crystal Engravings.

Submitted by Marcia Ellis

STUDY GROUP #3 - SOUTHERN FLORIDA "THE FLORIDA EVERGLADES"

The December meeting of the South Florida Everglades Study group was held on December 15 at the home of Bob & Betty Bryner. Our topic for the evening was a continuation of our review of the figural stems, this time with emphasis on the non-drinking vessel items in the series. The discussion was led by Luene Brandt with examples available from our Hosts' collection for examination. All members were present.

The January meeting of the South Florida Everglades Study group was held on January 19 at the home of John and Evelyn Knowles with all members present. We got our first look at the slides being prepared for the Caprice Slide Program at this meeting. The evening was spent reviewing the slides, identifying pieces and deciding which ones needed to be retaken.

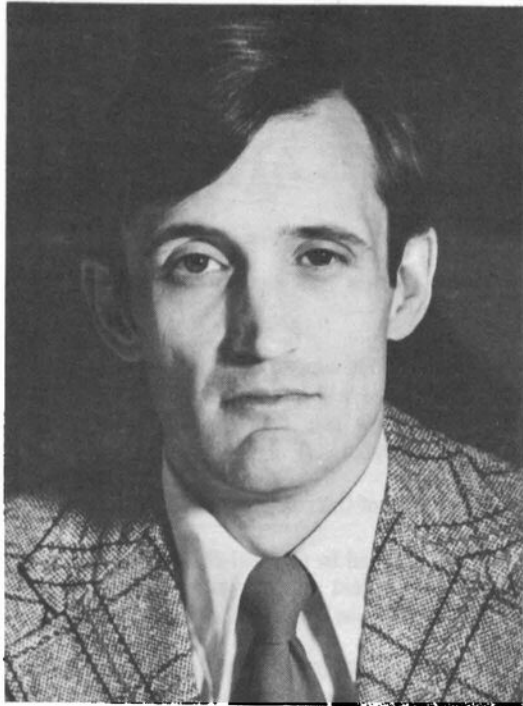
The February meeting of the South Florida Everglades Study group was held on February 16 at the home of Dick and Luene Brandt. Once again the evening was spent on Caprice. The bulk of the slides were available for review and sorting into item number order. Plans were made to have one more photography session in late February or early March and have the first complete trial run of the complete program at our March meeting.

Submitted by Mark Nye, Secretary

Continued on page 6

Speaker at the Saturday morning Convention Breakfast will be Mr. Sid Garrett. Information about Mr. Garrett and his talk will be presented in the May *Crystal Ball*.

CONVENTION SPEAKER



Dr. James S. Measell

Dr. James S. Measell has accepted the invitation to be the featured speaker at the Convention Banquet which will be held Saturday evening, June 26th, beginning with cocktail hour at 6:30 PM and dinner at 7:30 in the Banquet Room of the Shenandoah Inn, Old Washington, Ohio.

Dr. Measell is an Associate Professor in the Department of Speech Communication, Theatre and Journalism at Wayne State University in Detroit, Michigan. He teaches a graduate-level course in research methods, and his other special interests include Classical rhetoric, British public address and the English Renaissance, all of which have been subjects for publications in various scholarly journals.

Dr. Measell has been interested in Greentown glass since the mid-1960's when he and his wife, Brenda, first visited Howard County. They authored A Guide to Reproductions of Greentown Glass in 1970, and this book is in its second edition. He now serves as editor of the National Greentown Glass Association's quarterly Newsletter, and his articles on Greentown glass have appeared in Hobbies, The Antique Trader, The Magazine Antiques, American Collector and Glass Review. He has lectured on Greentown glass before numerous groups, and he delivered the keynote lecture at the Indianapolis Museum of Art's major Greentown exhibition in 1975. The Grand Rapids (Michigan) Public Museum published his book, Greentown Glass: The Indiana Tumbler and Goblet Company in June, 1979.

Dr. Measell has also contributed several articles to the *Crystal Ball*. His speech at the Banquet will be entitled "There's More to Glass Collecting than just Collecting Glass." It sounds like a fascinating and entertaining topic. You'll want to be at the Banquet to hear it!

NINTH ANNUAL CONVENTION

National Cambridge Collectors, Inc.

June 25, 26, 27, 1982

CONVENTION ACTIVITIES

will be held in the

SHENANDOAH INN

P.O. Box 147, Old Washington, Ohio 43768

(Interstate 70 - Exit 186 - 7 Miles East of Cambridge, Ohio)

Phone - 614/489-5511

SCHEDULE OF EVENTS

FRIDAY, June 25th

- 1:00 PM-4:00 PM REGISTRATION - Room 101
(ALL Convention Participants - MUST BE REGISTERED!)
- 1:00 PM-..... GLASS FACTORY TOURS - Meet at Shenandoah Inn
(Mosser & Boyd's Crystal Art Glass)
- 3:30 PM-..... MUSEUM GALA OPENING
- 6:00 PM-9:00 PM ANTIQUE SHOW & SALE
PREVIEW - Main Ballroom
DISPLAY ROOM OPEN - Room 100
- 9:30 PM-..... GET ACQUAINTED PARTY
Banquet Room - Pay Bar
Mini-Auction

SATURDAY, June 26th

- 6:00 AM-5:00 PM FLEA MARKET
Guernsey County Fair Grounds
- 8:00 AM-10:30 AM REGISTRATION-Banquet Room
- 8:30 AM-10:30 AM CONTINENTAL BREAKFAST
Banquet Room
Speaker - Mr. Sid Garrett
Topic - "Cambridge Cuttings"
- 11:00 AM-6:00 PM ANTIQUE SHOW & SALE
Main Ballroom
DISPLAY ROOM OPEN
Room 100
- 6:30 PM-7:30 PM COCKTAIL HOUR - Pay Bar
Banquet Room
- 7:30 PM-..... ANNUAL CONVENTION
Banquet - Banquet Room
Speaker - Dr. James S. Measell
Topic - "There's More to Glass Collecting than just Collecting Glass"

SUNDAY, June 27th

- 9:00 AM-..... BUFFET BREAKFAST
Banquet Room
Annual Business Meeting
"Show & Tell" (after meeting)
- 12 Noon-6:00 PM ANTIQUE SHOW & SALE
Main Ballroom
- 12 Noon-4:00 PM DISPLAY ROOM OPEN -
Room 100
- 4:00 PM-6:00 PM DISPLAY ROOM WILL BE
CLOSED
(Please pick up Display Glass)

STUDY GROUP #5 - SOUTHERN CALIFORNIA "CALIFORNIA CAMBRIDGE COLLECTORS"

Our February meeting was held at Herb and Betty Wanser's home. They are true collectors and visiting their home is very informative. In addition to hundreds of pieces of Cambridge, Heisey, etc., they also collect dolls, teddy bears, toys, clocks and just about anything collectable. So just viewing the lovely things on display is an education.

At this meeting we studied the 3400 line. Several good examples were brought by members and discussed. The prize this month was a forest green Caprice vase won by Herb.

We then shared our latest finds. Ron Rockafellow brought an 11" La Rosa pink bashful Charlotte in mint condition. Betty Losch shared a blue Caprice goblet, amber 638 candlestick with 732 etching, blue candy dish and a crystal console set with gold etched daffodils. This set was absolutely beautiful and in excellent condition. Also, purchased with the set was a Doulton pitcher with the same gold daffodil etching and the pitcher still had the original Cambridge sticker. My contribution to Show and Tell was a 3121 blown comport. The top is amber optic and the stem and base crystal.

At this time we would like to invite those from our area who are interested in joining our California Cambridge Club to contact the *Crystal Ball* through the NCC address and they will notify me. Our next meeting will be held at Beverley Hanson's and we will be studying the Mt. Vernon pattern and epergnes.

Submitted by Joan McDowell

STUDY GROUP #7 - EASTERN OHIO "THE CAMBRIDGE BUFFS"

Cambridge Buffs Study Group met February 18th at the home of Tom and Deanne Gray.

The topic of study for the evening was Cambridge sugars and creamers. The group identified approximately 40 sets or singles on display, and many were photographed. We found they make a good subject for collecting and we hope to print further information and pictures in a future issue of the *Crystal Ball*.

We looked at Show & Share items, discussed the 1982 Convention Program and were served refreshments by our hostess. Our next meeting will be held at the home of Dale and Peg Gotschall.
submitted by Deanne Gray

WE GET LETTERS

I enjoy the *Crystal Ball* — only wish it was larger — always "hungry" for Cambridge information.

Sincerely, Mrs. J.A. Donnell

I would like to have a copy of the November 1980 *Crystal Ball*. I certainly enjoy reading your newsletter, and await anxiously for its arrival.

Sincerely, Fred Lovejoy

Just wanted to drop a note and say how much I've enjoyed your articles on the 3011 Figure Stem. In June at the Convention we had our Roemer in Carmen on display there. We also have the other colors of Royal blue, Forest green and Amethyst. Thought this might help in clarifying the known colors.

Sincerely, Jane Rogers

UPDATE ON 3011 FIGURE STEM LINE ARTICLES

Betty Bryner of Florida has sent a picture of a V Cocktail #3011/10 in amber.

In *Crystal Ball* issue 96 it was stated that the only known colors for this cocktail were royal blue and amethyst, but that there is a possibility they were made in amber, forest green, gold krystal, carmen or crystal.

She also sent a picture of the Roemer #3011/6 topaz.

This article was reported in *Crystal Ball* issue 97 as being produced in royal blue, forest green, amber and amethyst with a possibility they were made in crystal, gold krystal and carmen.

Thank you, Betty, for sharing this information with Janice Hughes and Lynn Welker who prepared the 3011 Figure Stem Line articles and also with all our NCC members. People like you help to fit the pieces of the Cambridge Glass puzzle together.

AUCTION THANKS

From Lynn Welker
1982 Auction Chairman

The 1982 auction is now history. It was well attended with a full house and very avid bidding. Several items were bought by mail bidders. We want to thank everyone who took part in the auction by mail bid and hope that you can attend the auction in the future.

Much deserved thanks go to our excellent Auctioneer, Craig Connelly, who runs a fast paced and interesting auction. Janice Hughes, Jo Barstow, and Joe Andrejcek are to be commended for their fine job in helping set up the auction glass. All of this would not have been possible without the efforts of Bill Harbaugh who loaded glass and set up auction risers as well as taking care of clean-up and returning club materials to storage. Vicki Wollenhaupt and Joy McFadden did a fine job clerking the auction while Norma Kolb and Phyllis Smith spent long hours cashiering. Our auction runners and spotters deserve a round of applause. They were: Frank Wollenhaupt, Lyle Welker, Willard Kolb, Bill Smith, and Larry Hughes. As always, Bill Smith must be thanked for his work with the books, and figures for the auction must be put into the treasurer's books even though the auction is over.

Thanks to everyone who helped make the auction successful. Plan to attend next year as everyone has a good time as well as learning much through the auction.

1982 AUCTION RESULTS

1. 12.00	56. 190.00	111. 20.00	166. 22.50	221. 30.00	CORRECTIONS: 15. 2 stained 28. Carmen 35. Foot chip 52. 8 oz. 61. Foot chip 63. Open bubble in head 99. No gold 105. Mulberry 113. Decor wear 128. Marjorie 129. Small flake 150. Amber 151. Minor chip under one candlestick 173. One chipped 177. Rub under edge 219. Sugar not a creamer 224. Not sold 233. Handled jelly 234. Oval dish
2. 13.00	57. 32.50	112. 50.00	167. 65.00	222. 4.00	
3. 10.00	58. 65.00	113. 30.00	168. 20.00	223. 5.00	
4. 6.00	59. 80.00	114. 45.00	169. 30.00	224. No	
5. 20.00	60. 27.50	115. 60.00	170. 5.00	225. 12.50	
6. 30.00	61. 7.50	116. 12.50	171. 50.00	226. 30.00	
7. 37.50	62. 7.00	117. 12.50	172. 12.50	227. 21.00	
8. 15.00	63. 70.00	118. 30.00	173. 17.00	228. 25.00	
9. 17.50	64. 90.00	119. 24.00	174. 300.00	229. 17.50	
10. 6.00	65. 25.00	120. 17.50	175. 22.50	230. 60.00	
11. 50.00	66. 26.00	121. 19.00	176. 18.00	231. 21.00	
12. 12.00	67. 17.50	122. 4.00	177. 110.00	232. 40.00	
13. 16.00	68. 16.00	123. 6.00	178. 27.50	233. 7.00	
14. 20.00	69. 47.50	124. 11.00	179. 45.00	234. 8.00	
15. 41.00	70. 22.50	125. 22.50	180. 130.00	235. 8.00	
16. 27.50	71. 1.00	126. 70.00	181. 7.50	236. 15.00	
17. 42.50	72. 65.00	127. 5.00	182. 80.00	237. 67.50	
18. 22.50	73. SET	128. 20.00	183. 30.00	238. 25.00	
19. 27.50	74. 325.00	129. 40.00	184. 170.00	239. 25.00	
20. 12.50	75. 325.00	130. 275.00	185. 22.50	240. 40.00	
21. 15.00	76. 65.00	131. 16.00	186. 155.00	241. 7.50	
22. 13.00	77. 40.00	132. 15.00	187. 45.00	242. 30.00	
23. 30.00	78. 160.00	133. 50.00	188. 30.00	243. 22.50	
24. 16.00	79. 40.00	134. 25.00	189. 200.00	244. 12.00	
25. 12.50	80. 25.00	135. 60.00	190. 45.00	245. 7.00	
26. 12.50	81. 25.00	136. 55.00	191. 27.50	246. 6.00	
27. 7.00	82. 110.00	137. 68.00	192. 27.50	247. 8.00	
28. 10.00	83. 20.00	138. 60.00	193. 24.00	248. 18.00	
29. 14.00	84. 35.00	139. 60.00	194. 45.00	249. 15.00	
30. 12.50	85. 17.50	140. 12.50	195. 275.00	250. 5.00	
31. 20.00	86. 24.00	141. 50.00	196. 235.00	251. 11.00	
32. 6.00	87. 10.00	142. 17.50	197. 20.00	252. 4.00	
33. 40.00	88. 25.00	143. 30.00	198. 27.50	253. 12.50	
34. 14.00	89. 11.00	144. 20.00	199. 20.00	254. 11.00	
35. 12.50	90. 65.00	145. 22.50	200. 8.00	255. 2.00	
36. 25.00	91. 300.00	146. 30.00	201. 10.00	256. 24.00	
37. 26.00	92. 20.00	147. 25.00	202. 40.00	257. 20.00	
38. 35.00	93. 75.00	148. 19.00	203. 21.00	258. 21.00	
39. 30.00	94. 59.50	149. 14.00	204. 12.50	259. 1.00	
40. 15.00	95. 30.00	150. 3.00	205. 13.00	260. 2.00	
41. 17.50	96. 40.00	151. 125.00	206. 35.00	261. 8.00	
42. 10.00	97. 45.00	152. 20.00	207. 77.50	262. 5.00	
43. 15.00	98. 45.00	153. 12.50	208. 36.00	263. 5.00	
44. 12.50	99. 25.00	154. 12.50	209. 20.00	264. 11.00	
45. 52.50	100. 32.50	155. 37.50	210. 10.00	265. 12.00	
46. 40.00	101. 25.00	156. 10.00	211. 65.00	266. 3.00	
47. 25.00	102. 10.00	157. 12.50	212. 60.00	267. 4.50	
48. 35.00	103. 170.00	158. 30.00	213. 288.00	268. 14.00	
49. 25.00	104. 50.00	159. 30.00	214. 44.00	269. 20.00	
50. 1.00	105. 130.00	160. 15.00	215. 20.00	270. 6.00	
51. 8.00	106. 12.50	161. 12.50	216. 15.00	271. 10.00	
52. 8.00	107. 20.00	162. 15.00	217. 20.00	272. 4.00	
53. 20.00	108. 118.00	163. 45.00	218. 20.00	273. 3.00	
54. 55.00	109. 27.50	164. 12.50	219. 10.00	274. 3.00	
55. 60.00	110. 55.00	165. 48.00	220. 7.00	275. 22.00	

QUARTERLY MEETING REPORT

by Joe Andrejcek

The first Quarterly Meeting of 1982 was held at the Shenandoah Inn, Old Washington, Ohio — the night before the 1982 All Cambridge Glass Auction. Approximately 75 people from Indiana, Maryland, New York, Michigan and Ohio attended what turned out to be a preview of what was rare in the Auction.

The business meeting (see minutes elsewhere) was conducted with the Cambridge Auction glass in the background. It even made Willard Kolb look good.

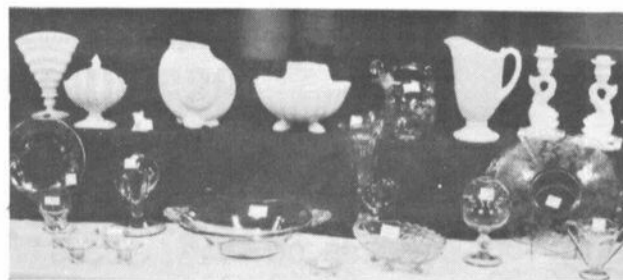
The program presented by the Chairman of the Auction, Lynn Welker, covered in great detail each of the rare and the not so rare but yet very desirable Cambridge glass pieces that were for sale the following morning. Included in the RARE section were:

- #1066 Mandarin Gold 7" Ivy Ball, stem & foot all gold
- #W54 Milk glass 31 oz. Water Pitcher
- #1 Topaz Keg Set with 4 Barrel Tumblers with Ebony holder, cap & tray
- Blue Cloud low footed Goblet
- #136 — 7" Rabbit Box with cover
- Community Mulberry stemmed Lamp
- Pressed Rosepoint carmen footed Goblet
- A cracked but extremely rare Green Carnival, Inverted Feather, marked Near Cut, Punch Bowl
- #1108 Light Emerald Mandolin Lady Flower Figure in bent over style of Bashful Charlotte but with face turned to the side
- #873 Decagon Willow Blue Mayonnaise Compot with Dark Blue Enamel #731 etching
- #3011 Nude Heatherbloom 4½ oz. Claret
- #47 Seashell Crown Tuscan 9½" Cornucopia Vase, with a Rockwell Sterling Seahorse decoration and Sterling trim

Crown Tuscan collectors missed a good opportunity to add to their collection. On display were a #1299 Crown Tuscan 11" vase, a beautiful Crown Tuscan 4" ashtray with a mint Charleton Enamel Rose decoration, two Crown Tuscan Nudes with Mandarin Gold cocktail bowls. The list goes on and on.

Now close your eyes and imagine a four foot tier filled with Royal Blue, two tiers filled with Carmen pieces, an eight foot table filled with Crystal and next to that a Luncheon Set in Heatherbloom and/or a Blue Willow etched in Blue Enamel Luncheon Set.

Like the kids say — "You had to be there!"



NCC ALL CAMBRIDGE AUCTION

by Joe Andrejcek

On February 27th in the "Blue Room" of the Shenandoah Inn was perhaps the finest array of rare and not so rare Cambridge Glass ever auctioned in 1982. If the old memory serves me right, the last "Finest Array" was seen at the Auction of 1981. 274 pieces of you name it — it was there — were sold to the highest bidder.

Craig Connelly who had us practice raising our right hands prior to the sale did an outstanding job of selling the glass at a rate of one piece per minute — almost. Or, so he said. The 200 or so people at the Auction knew what they wanted and went after those pieces of Cambridge like bears to honey.

Review the Auction list in this issue of the *Crystal Ball* and compare what you would have paid for the rare items to what was the final bid. Surprised?

Not only was the Cambridge MUSEUM benefited by the Auction but so was my collection of miniatures and decanters as were collections all over this part of the country and one in California.

A big thank you to all who attended and to all who worked so hard to make the 1982 Cambridge Auction a success, again.

RARE 1982 AUCTION GLASS PIECES



Community Mulberry Lamp

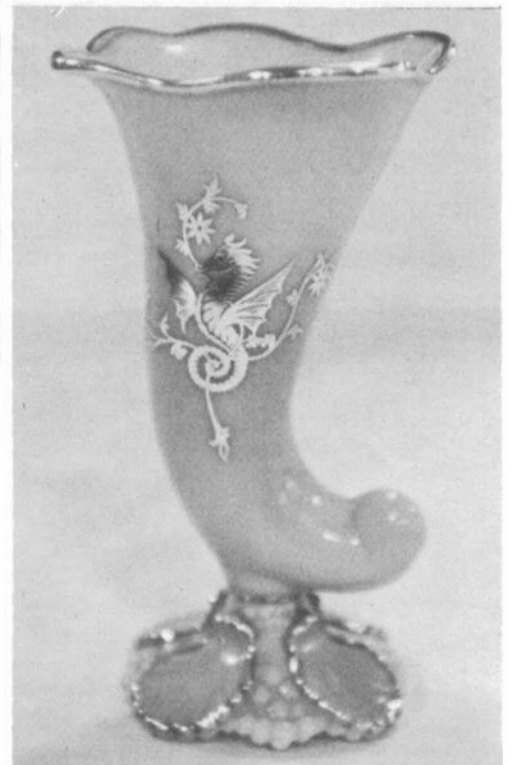


#1108 Light Emerald Mandolin Lady Flower Figure
(note bent position like Bashful Charlotte
but with face turned to side)

**Photography
by
Mark Gotschall**



#1 Topaz Keg Set with Ebony holder, cap & tray



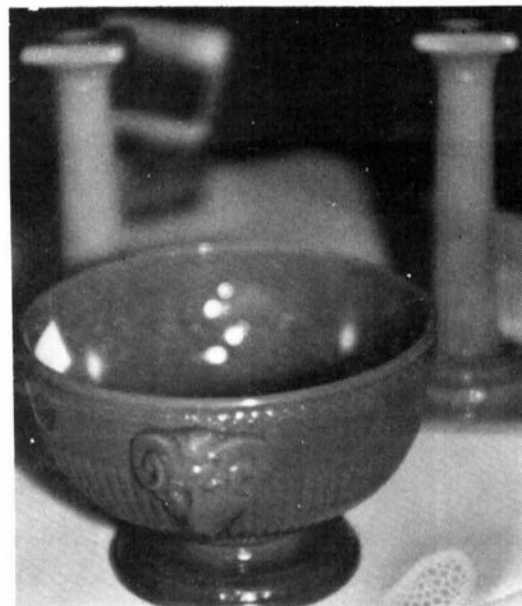
#47 Seashell Crown Tuscan Vase with Sterling decoration



#3400 Milk Glass low sugar & creamer with brass Farber tray & lid

1982 AUCTION VIEWS

Photography
by
Mark Gotschall
and
Dale Gotschall





No. 3700 - 3 OZ. COCKTAIL



No. 3700 - 4 1/2 OZ. CLARET

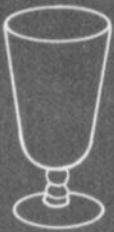


No. 3700 - 2 1/2 OZ. WINE

No. 3700 - GOBLET



No. 3700
4 1/2 OZ. OYSTER COCKTAIL



No. 3700 - 12 OZ. FTD. ICE TEA



No. 3109 - 5 OZ. FTD. TUMBLER

No. 3109 - 9 OZ. GOBLET



No. 3700 - 1 OZ. CORDIAL



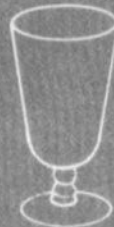
No. 3700 - 10 OZ. FTD TUMBLER



No. 3700 - 6 OZ. TALL SHERBET



No. 3700 - 6 OZ. LOW SHERBET



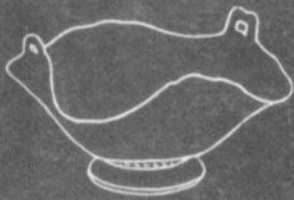
No. 3700 - 5 OZ. FTD. JUICE

D/1045 (gold edge) WILDFLOWER

D/1051 (gold edge) ROSE POINT

D/1041 (gold encrusted) ROSE POINT

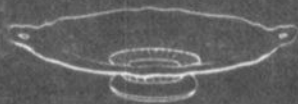
D/1047 (gold encrusted) WILDFLOWER



No. P-35 — 6" 2-HDL.
LOW FOOTED BASKET



No. D/1047 (Wildflower)
(gold encrusted)
6" 2-PART RELISH



No. P-56 — 8" 2-HDL.
LOW FOOTED PLATE



No. D/1041 (Rose Point)
(gold encrusted)
6" FOOTED COMPORT



THE CAMBRIDGE GLASS COMPANY, CAMBRIDGE, OHIO, U.S.A.

— Classified —

CAPRICE WANTED: 2 tops for #165 Crystal Candy Box, 3 #19 Crystal Bobeche's/Prisms, 1 set #1338 Emerald Candlesticks, 1 set #1338 Mandarin Gold Candlesticks. Fred Lovejoy, 116 E. Edgebrook #905, Houston, Texas 77034

TALLYHO COBALT FOR SALE: 6 cups/saucers, 6 sherbets — mint condition — make offer. Fred Lovejoy, 116 E. Edgebrook #905, Houston, Texas 77034

WANTED TO TRADE: Pair ivory candlesticks, Bennett Plate 4, Row 2, #2 & 4, for a primrose, ivory, jade or avocado ½ lb. candy as Bennett Plate 4, Row 1, #2. NEED: Azurite lid for 6" cigarette box, shape Bennett Plate 8, Row 2, #2; Primrose cologne stopper, shape Bennett Plate 8, Row 1, #5; and miscellaneous Faberware holders. Mrs. J.A. Donnell, St. Rt. 23, Pemberville, Ohio 43450

BUYING: Cambridge Rosepoint, Heisey Rose and Orchid, Fostoria etched dinnerware and Depression Glass. Also glass figures and unusual glass pieces. NADINE PANKOW, 207 S. Oakwood, Willow Springs, ILL. 60480. Phone: 312-839-5231

WANTED: CAMBRIDGE ROYAL BLUE — Anything — but love Nude Stem items. If you see Cobalt — think COBALT CAROL Markowski, 3141 West Platte Ave., Colorado Springs, CO 80904

STAGE COACH ANTIQUE MALL

(formerly *White Pillars Antiques*)

7525 East Pike
Norwich, OH 43767
614/872-3720

MANY DEALERS

PLENTY OF PARKING

WIDE SELECTION OF GLASS
AND POTTERY

FURNITURE AND

GENERAL LINE!

BUY ----- SELL ----- TRADE

OPEN YEAR ROUND

Weekdays - 10 AM - 5:30 PM

Sunday - 12 noon - 5:30 PM

Summer Evening Hours - by Chancel

Located 9 miles E. of Zanesville, OH, on I-70 to Norwich
Exit #164 - then 1/2 mile W on Route 40.

WANTED

Two 4½ oz. Oyster Cocktail Glasses
Rock Crystal Engravings No. 1004 Montrose
Applied to No. 3700 Stemware Line

MRS. RITA C. PRAIRIE

655 Washington Street
Denver, Colorado 80203

FLOWER FROGS WANTED

Describe Giving
number, color, clear or frosted, base details and price.

MINT CONDITION ONLY
ALL OFFERS WILL BE ANSWERED

M. SCHNEIDER, 2982 CHERYL ROAD, MERRICK, NEW YORK 11566

NATIONAL CAMBRIDGE COLLECTORS

FLEA MARKET

Saturday - June 26th
6 AM - 5 PM

GUERNSEY COUNTY FAIRGROUNDS

OLD WASHINGTON, OHIO
(one mile East of I-70, Exit #186, on Old U.S. 40)

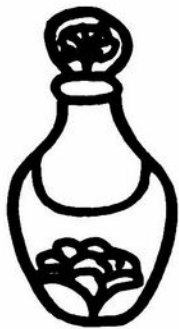
DEALER SPACE AVIALABLE

For information or Contract write: Larry Hughes, Chrm., P.O. Box 416, Cambridge, OH 43725



Degenhart Paperweight & Glass Museum

To include info on
Degenhart work at
Cambridge Glass Co.



Book format: 8½x11", soft-cover, approx. 120 pgs.
Approximately 35 pages of color illustrations.

Books sold prior to publication date (late-May),
will be signed and numbered by the book's author.

Price: \$13.95 before May 15th / \$14.95 after that date

Send S.A.S.E. for order blank.

P. O. Box 112; Cambridge, Ohio 43725 Phone: (614) 432-2626



ANNOUNCES
the pre-publication sale
of the book

Degenhart Glass and Paperweights

by Gene Florence



DEALERS DIRECTORY

NOTE When writing to the Dealers listed here, please enclose a SASE!

ROUND HOUSE BOOKS
We carry more than 1000 current titles
on Antique and Collectibles
For More Information, Write
Box 302-C, Mt. Vernon, Ohio 43050

<p>EVELYN M. ALLEN 135 Cynthia Street Heath, Ohio 43055 Mail Order & Shows 614-522-1635 SPECIALIZING IN CAMBRIDGE GLASS!</p>	<p>BENICIA ANTIQUE SHOP 305 First Street Benicia, California 94510 OPEN 11 AM - 5 PM Closed Monday Z. E. LOPES 707-745-0978</p>	<p>CHARLES MIKULIK Box 416 Elizabeth, N J 07207 — COLLECTOR — Always paying good prices for CAMBRIDGE CAPRICE in all colors 201-688-1144 CARRY MOST TYPES OF ANTIQUES</p>
<p>BLACK ROOSTER ANTIQUES 1018 Clark Street Cambridge, Ohio 43725 614-432-3202 M. Sipe CAMBRIDGE GLASS - GENERAL LINE</p>	<p>VISIT HISTORIC BENICIA and its 28 shops Off Interstate #80 North of San Francisco</p>	
<p>BERKELEY ANTIQUES 69 Berkeley St. Boston, MA 02116 George or Frank 617-426-1048 CAMBRIDGE, HEISEY, GENERAL LINE</p>	<p>ANDREJCAK'S ANTIQUES 14533 Bayes Ave Lakewood, Ohio 44107 Joe & Karen Andrejcek 216-226-3417 SHOWS ONLY — CAMBRIDGE — FENTON — CHINA</p>	<p>A. SPRINGBORN 5434 Windridge Lane Orlando, Florida 32810 SHOP No. 34 — WEBSTER, FL Open Every Monday 305/298-3011</p>
<p>D & D ANTIQUES Columbus, Ohio DICK SLIFKO SHOWS ONLY</p>	<p>THE HITCHING POST 7467 S. R. 88 Ravenna, OH 44266 Ph 216-296-3686 D. McDaniel CAMBRIDGE — HEISEY — GENERAL LINE</p>	<p>FINDER'S KEEPER'S ANTIQUES P O Box 303 Dayton, O 45401 513-254-2937 P O Box 16023 Columbus, O 43216 614-885-2726 SPECIALIZING IN CAMBRIDGE GLASS!</p>
<p>THE GLASS CUPBOARD 39 Shire Oaks Drive Pittsford, New York 14534 Marcia Ellis 716-586-7596 CAMBRIDGE ONLY MAIL ORDER</p>	<p>GEORGE HOFFMAN ANTIQUES 129 South 4th Street Newark, Ohio 43055 614-345-8021</p>	<p>OUR GLASS ANTIQUES Box 27, Wills Point, Texas 75169 20th CENTURY COLLECTIBLES featuring CAMBRIDGE GLASS! Shows - No Lists - SASE Please PAUL & GINNY HENDERSON 214-873-4190</p>
<p>KILPATRICK'S ANTIQUES Lu & Dort 400 W 6th St., Bloomington, IN 47401 Res. 812/332-8754 Shop 812/339-1120 We buy one piece or collections</p>	<p>S & J GLASS 10629 Main St., Fairfax, VA 22030 Janet & LeRoy Sanders 703/273-8579 BUY & SELL: DEPRESSION, CAMBRIDGE, HEISEY, DUNCAN & FOSTORIA GLASS</p>	<p>1886 HOUSE East Schodack, N.Y. 12063 MAIL and SHOWS Laurie Cruise 518-477-5895 CAMBRIDGE - MORITAKE - AZALEA - D.G.</p>
<p>joyce's antiques Bought and Sold Specializing in HEISEY • CAMBRIDGE • VERLYS • AMERICAN GLASS P.O. Box 114, Albertson, N.Y. 11507 (516) 499-3396</p>	<p>ROLLING ACRES ANTIQUES 66484 N. 8th Street Road Cambridge, Ohio 43725 Sandy Jenkins & Anne Ingram 614-432-2570 CAMBRIDGE & GENERAL LINE ANTIQUES</p>	<p>BILL & SHARON PHILLIPS 21730 Priday Euclid, Ohio 44123 Ph 216-261-4665 Shows Only BUYING GLASS, ANTIQUES, ETC.</p>
<p>CHARLES A. SHAW Glenwood Gardens - R V W 1B Yonkers, NY 10701 AMERICAN GLASS 914-476-5175 SHOWS & MAIL ORDER'</p>	<p>AL STEELE Westerville, Ohio 614-882-6483 or 614-882-7124 Mail Orders and Shows Only HEISEY — CAMBRIDGE — PATTERN GLASS</p>	<p>SWISS HILLS COLLECTIBLES 303 Guilford Ave., Woodfield, OH 43793 Mary & Wilbur Henderson 614-472-1133 SPECIALIZING IN CAMBRIDGE GLASS Shows, Mail & Stagecoach Antique Mall</p>
<p>MARGARET LANE ANTIQUES 2 E. Main St., New Concord, OH 43762 Lynn Welker 614-826-4418 CAMBRIDGE GLASS MATCHING SERVICE Hours Mon - Fri 1-5 PM or by Appointment</p>	<p>SHIRLEY S. LADOUCEUR Antiques and Collectibles Specializing in Cambridge Glass BY APPOINTMENT 7597 Daphne Drive 315-458-5297 No. Syracuse, NY 13212</p>	<p>GREEN ACRES FARM Antiques, Crystal Glass & Collectibles Sat. & Sun. 1-7 PM (614) 927-1882 2678 Hazelton Etna Road (State Route 310 North) Pataskala, Ohio 43062</p>



National Cambridge Collectors, Inc.

P. O. Box 416, CAMBRIDGE, OHIO 43725

A nonprofit organization dedicated to the preservation and study of Cambridge Glass

DISPLAY ROOM GLASS FORM

The Convention theme color this year is GREEN

Anyone attending who would like to furnish glass for the Display Room should complete this form and return to:

National Cambridge Collectors, Inc.
Attention: Display Room
P. O. Box 416
Cambridge, Ohio 43725

NAME _____

ADDRESS _____

(List the items you can share beside their color)

JADE	TOPAZ
POMONA GREEN (Avocado)	FOREST GREEN
PEARL GREEN	PISTACHIO
LIGHT EMERALD	DARK EMERALD
OLD EMERALD (Near Cut)	

(Use a separate sheet of paper if necessary)

1982 Display Room Committee - Bill Harbaugh, Lynn Welker, Jan Hughes, Jo Barslow.

HURRY! **CONTEST DEADLINE** **JUNE 1st, 1982**

There is still time to get into the Contest — Membership — that is. The NCC member who secures the most new members will be doing both the new member and NCC a favor as well as becoming the winner of either paid Convention registration or a personalized paperweight.

Membership Chairman Phyllis Smith has announced that the Contest Deadline is June 1st, so please do your part to recruit new members, make the club grow and prosper and possibly win that nice prize.

Membership forms can be found in Issues 102, 104 or 106 of the *Crystal Ball*.



National Cambridge Collectors, Inc.
P. O. Box 416 Cambridge, Ohio 43725

FIRST-CLASS MAIL
U.S. POSTAGE
PAID

Cambridge Ohio
43725
Permit No. 1

FIRST CLASS MAIL