

Cambridge



Crystal Ball

ISSUE NO. 118

FEBRUARY 1983

Published monthly by the NATIONAL CAMBRIDGE COLLECTORS, Inc.
To encourage and to report the discovery of the elegant and boundless product
of the Cambridge Glass Company, Cambridge, Ohio

THOUGHTS

How many of you have passed up the opportunity of owning stacks of old magazines because you didn't want someone unloading their trash on you? Well, maybe you don't know what you're missing. I had the opportunity present itself the other day, and I was so anxious to get the magazines that the lady was shocked. She had really found a sucker to haul away all the trash that had been saved in a giant book case for years.

The magazines were from the 30's and 40's and contained many Glass Company ads, many of them Cambridge and from Glass Companies no longer in existence. (My wife wasn't too pleased when I hauled all of these into the house, but guess who's sitting in the room looking at them while I have to write this article?) "What's that Norma? Oh, yes I saw the ads where Coke was 25¢ a six pack in 1937, but who had a quarter to waste? Norma, look for ads about glass and mark the pages so I can use them for reference later. Yes Norma, I know that Coke came in bottles then because cans had not yet come into use as beverage containers; but I'm quite sure those aren't Cambridge Coke bottles."

Anyway, it's surely fun to look through old magazines, reminisce a little, and learn a lot about Glass Companies of the past.

AUCTION: Don't forget to make your reservations with the Shenandoah Inn if you are planning to attend the Quarterly Meeting Friday evening, February 25th and stay over there for the Auction on Saturday, February 26th. There are many, many good items in the Auction, and you won't want to miss a chance to own them.

CONVENTION: I suppose you'll get tired of me reminding you about the Annual Convention, but so be it. Those who have attended seem to return each year. It is a great opportunity for

everyone to get together and enjoy themselves. You can learn, buy the piece of glass you have been looking for, rap with other members about Cambridge Glass or visit our very own MUSEUM and other fine Museums in the area. You can see glass being made right in Cambridge at Boyds and Mossers or visit other famous glass producers in a radius of fifty miles. Why not attend? You tell me.



Willard

PROPOSED BY-LAWS CHANGE

In accordance with Article XI, Section 1, of the By-laws of National Cambridge Collectors, Inc., the By-laws may be amended by a majority vote of the Active members in good standing present and voting at any regular meeting of the organization after recommendation by the Board of Directors or by any 12 active members. The following proposed change has been duly recommended by 12 active members and will be brought before the membership at the February, 1983 quarterly meeting:

RESOLVED; that Article VII, Section 4, of the By-laws of National Cambridge Collectors, Inc. be amended so that the first paragraph shall read:

"The Board of Directors shall consist of 12 members elected from the roll of active voting members. The term of office shall be for 4 years. A Director may not serve for more than 2 consecutive full terms nor more than 8 years in any 10 year period. Service of less than a full year but exceeding 6 months shall be considered a full year for the purposes of this limitation. A Director may serve the balance of the current term in which the preceding limitation is reached."

David B. Rankin
Chairman
By-laws Committee

MEMBERSHIP RENEWAL NOTICE

If the date on your
address label is - -

2-83

This is your **LAST ISSUE** of the **CRYSTAL BALL**.

Please renew **NOW!**

CAMBRIDGE CRYSTAL BALL

Official publication of National Cambridge Collectors, Inc., a non-profit corporation with tax exempt status. Published once a month for the benefit of its members.

Membership is available for individual members at \$13 per year and additional members (12 years of age and residing in the same household) at \$3 each. All members have voting rights, but only one *Crystal Ball* will be mailed per household.

Back issues of the *Crystal Ball* are available (beginning with Issue No. 1, May 1973) for members only. Cost: \$.60 each or 12 issues for \$7.

1982-83 OFFICERS & COMMITTEE CHAIRPERSONS

| | |
|-------------------------------|-----------------------------|
| PRESIDENT | Willard Kolb |
| VICE-PRESIDENT | Josephine Barstow |
| SECRETARY | Janice Hughes |
| TREASURER | William Smith |
| SERGEANT-AT-ARMS | Don Armbricht |
| BOOK SALES | Billy Harbaugh & Jo Barstow |
| BUDGET & FINANCE | David Rankin |
| BY-LAWS | David Rankin |
| CONVENTION | Josephine Barstow |
| MEMBERSHIP | Phyllis Smith |
| MUSEUM | Billy Harbaugh |
| PROGRAM & ENTERTAINMENT | Frank Wollenhaupt |
| PROJECT | Willard Kolb |
| PUBLIC RELATIONS | William Smith |
| PUBLICITY | Joseph Andrejcek |
| 1983 AUCTION | Lynn Welker |
| 1983 ANTIQUE SHOW | Joy McFadden |
| CRYSTAL BALL EDITOR | Peg Gotschall |

CLASSIFIED ADVERTISING RATES

5c per word \$1.00 minimum
 We cannot mix type size in classified advertisements. Abbreviations and initials will count as words. Payment in full MUST accompany all ads.

DISPLAY ADVERTISING RATES

| | Members | Non-Members |
|-----------------|---------|-------------|
| 1/8 page | \$ 4.00 | \$ 6.00 |
| 1/4 page | 7.00 | 10.00 |
| 1/2 page | 12.00 | 18.00 |
| 3/4 page | 17.00 | 25.00 |
| Full page | 22.00 | 33.00 |

DEALERS DIRECTORY

1" ad (5 line maximum) \$6.00 for 6 months

Cambridge *Crystal Ball* assumes no responsibility for items advertised and will not be responsible for error in price, description or other information.

Advertising copy, articles, and club news and notices must be in our hands by the 10th of each month to assure publication in our next issue. Advertisements containing reproductions will not knowingly be accepted unless clearly stated.

Opinions or information stated in any signed article or letter printed in the *Crystal Ball* are those of the writer only and may or may not agree with National Cambridge Collectors, Inc. The editor reserves the right to refuse or edit material submitted for publication to conform to the editorial style of the *Crystal Ball*.

PLEASE ADDRESS ALL CORRESPONDENCE TO

Cambridge Crystal Ball
 National Cambridge Collectors, Inc.
 P.O. Box 416
 Cambridge, Ohio 43725

Janice Hughes, Secretary Phone 614-432-7823
 Willard Kolb, President Phone 614-695-0695

PLEASE NOTIFY US IMMEDIATELY OF ANY CHANGE IN YOUR ADDRESS!

Please enclose a self-addressed stamped envelope when requesting information!!

Study Club News

STUDY GROUP No. 8 - SOUTHERN MICHIGAN "THE MICHIGAN CAPRICES"

The evening of December 10th, the Michigan Caprices met at the home of Robert and Betty Dasen. Martin Coppo and Jack Christianson were welcomed guests. Betty had prepared some delicious California dishes for dinner, and finished it with a North Carolina dessert served on Rose Point crystal. Needless to say the first hour or so of our meeting was not entirely devoted to Cambridge Glass.

Betty had chosen the topic of "Cambridge Hum-Bug." It seems all the members had items, before they became Cambridge wiser, which they either thought, or had been told, were Cambridge. They also had similar Cambridge pieces to compare the difference. Lee Coppo presented several articles from the Cambridge Newspaper on the past Convention and the MUSEUM opening. The articles will be added to our scrapbook. Clara Brown recognized a Near Cut candlestick in the MUSEUM picture to be one like Bill and I have. We had decided it was not Cambridge, so we were very pleased with that discovery.

For Show and Tell, Betty and Robert had a new #520 etched #908 oval tray to add to their luncheon set. Ray and Clara Brown had recently purchased a crystal Near Cut fish tankard. It's a beauty. We concluded the meeting with some holiday cheer, a delicious Irish Liqueur served in Dasen's Caprice cordials. What a lovely evening.

submitted by Phyllis Hayes

STUDY GROUP No. 6 - NEW YORK STATE "THE FINGERLAKES"

On Sunday, December 12th, the Fingerlakes Study Group met at Jan D'Amato's apartment in Rochester, New York at noon. One guest, John Patchen, attended our Christmas Party meeting. Our meeting was a bit fragmented, due to some heavy snow. It is interesting to note that "neither snow nor sleet, etc., etc." could deter Sandy O'Donnell, who drove all the way from Rome, New York in this weather — only to return two hours later. At least she didn't miss the slide presentation, but talk about enthusiasm and dedication! We were able to view the slides on Stems and Figurals — both of which are not only very informative, but make for a delightful afternoon of looking at some beautiful pieces of Cambridge Glass. It was quite a bit to assimilate in such a short period of time; however, we were attempting to combine two meetings into one session. Due to the weather and the two slide presentations, we opted to not hold a business meeting. Jan served up some very unusual and delicious refreshments using her treasured collection of Rose Point. Our next meeting will be held in Syracuse on Sunday, February 6th. We will be studying stems, and finishing up our work on cruets.

submitted by Marcia Ellis

STUDY GROUP No. 3 - SOUTHERN FLORIDA "THE FLORIDA EVERGLADES"

After a summer break, the South Florida Everglades Cambridge Study Group resumed its monthly meetings in September, meeting at the home of Dick and Luene Brandt. It had been decided at the last meeting in May that the topic for the 1982-83 meetings would be etchings. Thus the subject for the evening's discussion was Cleo, with Luene acting as the main speaker and moderator. The Show and Tell table contained, among other items, crystal canape plates with rings, etched Appleblossom. Several members present reported on having seen an amber decagon punch bowl etched Cleo at a local antique show.

The October meeting of the South Florida Everglades Cambridge Study Group met at the home of Bob and Betty Bryner on October 18 with 9 members present. Mark Nye presented the program and acted as moderator for the discussions. The program consisted of an overview of the numbered etchings #1-743, continuing our plan of devoting the year to studying etchings. Since many of these etchings are seldom seen today, illustrations had been copied from various sources and put together for the study group's use. On the Show and Tell table were topaz 3011 or nude stem roemers, a moonlight blue Caprice #254 6" blown vase, #3400/27 tumblers in gold krystal, etched Gloria, and what appears to be a Royal Blue Tally Ho covered powder jar.

The November meeting of the South Florida Everglades Cambridge Study Group was hosted by Bill and Barbara Adt on November 16 with 9 members present. We continued our review of etchings with Mark Nye again acting as moderator. Gloria, Lorna and Elaine were covered during the course of the evening. Pieces from members collections were used to illustrate the three etchings.

The December meeting of the South Florida Everglades Cambridge Study Group was held at the home of Mark Nye on December 21 with 6 members present. Etchings were once again the subject of the discussion, and this time we covered the balance of the numbered etchings, excluding Appleblossom which will be covered at a later session. Since many of these numbered etchings are not too often seen, we relied on catalog illustrations to determine the etching design.

submitted by Mark Nye, Secretary

MEMBERSHIP

Membership Contest now in progress —
Invite and sign-up new members now!
Prize — paid 1983 Convention Registration

MUSEUM Telephone Number
614-432-4245

STUDY GROUP No. 7 - EASTERN OHIO "THE CAMBRIDGE BUFFS"

Cambridge Buffs met December 10th for a Christmas Buffet with Peg and Dale Gotschall. Christmas arrangements in Cambridge Glass containers were made and brought by Shirley Douglas, Deanne Gray, Lena Barnes and Mary Alice Upton. They centered the dinner tables.

Two games were played. One was on Cambridge Patterns and the other on Unscrambling Pattern Names. Prize winners were Shirley Douglas and Deanne Gray. A Christmas exchange of Cambridge Glass was held, and a Christmas greeting and gifts were received from Pauline and Dean Westfall who were in Mississippi during the Christmas season and could not be with us. A card was signed by all for Doris Isaacs who was hospitalized.

Show and Tell included a crystal Caprice divided dish, a Marjorie Near Cut salt shaker, a custard toothpick holder by an unknown maker, Cosmos salt and pepper, a signed amber Shell nut dish, a train candy container, a Virginian small bon-bon, Crown Tuscan vase etched Portia and gold encrusted, an opalescent Everglades cream and sugar, and a Corinth sugar. The next meeting will be with Karen and Larry Jones.

submitted by Deanne Gray

AUCTION REMINDER

February 25th is the deadline for Mail Bids for the 1983 All Cambridge Auction. Bids must be received on or before that date, so mail them early to avoid disappointment. Take advantage of the opportunity to purchase good pieces of Cambridge Glass and support NCC and your MUSEUM at the same time. For more information and bidding instructions, see the Auction Information page which was mailed to you with your January *Crystal Ball*.

ATTENTION NORTH CALIFORNIA MEMBERS

There is a Study Group in Southern California, but California members, Ted and Shirley Hirshberg would like to know if there are any North California members interested in forming a Study Group. If so, please contact them through the NCC address.

NEW PRICE GUIDES AVAILABLE

The 1983 Price Guide to the NCC 1949-53 Catalog Reprint is now available at \$2.25 each including postage.

A new supply of the 1982 Price Guide to the NCC 1930-34 Catalog Reprint is also available — also at \$2.25 each including postage.

Order from National Cambridge Collectors, Inc., Box 416, Cambridge, Ohio 43725.

EDITOR'S NOTE: The following article is the third of a series of articles by Mark Nye dealing with the "Cambridge Girls", ie those etchings bearing girls' names.

ELAINE

by Mark Nye

The plate etching Elaine was introduced in early 1933. In that year, a supplement to the 1930 Cambridge catalog shows the etching on Tally Ho #1402/100 and #3500 or Gadroon stemware as well as on the 1402/34 11½" sandwich plate and the Tally Ho 1402/101/101/8 three piece buffet or Sunday evening supper set. It is fairly certain Elaine was available on more items than the few pictured; however, without the price list that accompanied the catalog supplement, the specific items available in 1933 cannot be determined.

Indications are Elaine was featured during 1933 since apparently this was the year Cambridge bestowed a high honor on the etching, its own trademark in the form of a paper label with "Elaine" on it. This label was discussed by Dave Rankin in the November 1975 issue of "The Cambridge Crystal Ball". According to the article, use of the Elaine label was probably discontinued by 1937. The existence of the Elaine label leads one to conclude there was a wide assortment of Elaine etched pieces available during this time period. However, the 1934 catalog supplement featured Elaine on only two stemware lines, Tally Ho #1402/150 and the extra tall #3104 line. One possible explanation for the lack of exposure in the catalog is the existence of a separate Elaine brochure; however this author is not aware of one.

Between the introductory date and 1940, Elaine made its first appearance on other stemware lines, numbers 3035, 3121, 3106 and 3130.

The 1940 catalog and price list reveal how extensive the line was with 27 full catalog pages devoted to illustrating Elaine. The 3400 line was prominently featured and to a lesser extent, the 3500 or Gadroon blank was shown with Elaine. A very extensive 3400 dinnerware line was available including the #49 3½" cranberry, #53 6" cereal, #55 cream soup and saucer, #56 5½" fruit saucer, #63 9½" dinner plate and the #64 10½" plate. Numerous other 3400 line items were also listed.

More than 60 Tally Ho items etched Elaine were available from the 1940 catalog. These included a dinnerware set complete with the #25 10½" service plate, #16 shakers and the #14 fingerbowl. Also listed were the two punch bowls, the #77 13" footed 6 quart bowl and the #64 10½" low footed 4 quart bowl, plus the #140 5 oz. punch cup and #111 ladle.

Eight Pristine and five Martha blanks were in the 1940 Elaine listing. The Pristine offering included the #99 cocktail shaker and the #187 two piece grapefruit or salad icer. Among the Martha blank items was the #188 salad or fruit icer.

When the 1949 catalog was published, seven pages were devoted to Elaine. Two stemware lines were shown, the #3121 and #3500, and the featured blank for the dinnerware and accessory items was corinth or #3900. However, the available #3121 stemware did not include the 1 oz. brandy or the 2 oz. footed tumbler and the short bowl goblet, 13 oz. footed tumbler and 2½ oz. footed tumbler were missing from the Gadroon stemware. A dinnerware set was still available, utilizing Corinth blanks, but it was not nearly the size of the 3400 line set from 1940. Three sizes of plates were shown — 6½" bread and butter, 8" salad and the 10½" dinner plus the cup and saucer and accessory serving pieces. Other than the Corinth Blanks, Elaine was shown on the #968 two piece cocktail icer and a nine piece assortment numbered #1948. This assortment contained the #477 9½" pickle (sometimes called a corn dish), #3500/15 individual creamer and sugar, four other Gadroon occasional pieces and three #3400 items, #1180 two handled bonbon, #1181 6" two handled plate and #90 6" two part relish.

On one of the seven pages of the 1949 catalog showing Elaine, the etching was featured on nine vases and two hurricane lamps. The lamps were #1603, which has a keyhole base, bobèche, six prisms and globe, and the #1617 from the Martha line. The illustrations appear to show both hurricane lamps had the Elaine etching only on the globes.

It is doubtful Elaine was used on anything other than crystal pieces. If it was, this author is not aware of any colored Elaine items. The etching may be found gold encrusted (D/1014) or on crystal with a gold edge on the item (D/1022). These two treatments were listed in the 1940 catalog and probably were first used earlier.

Some time between 1949 and 1956, the Elaine story ended, possibly as late as 1954 with the initial plant closing. None of the price lists or catalogs from the re-opened period contain listings for this etching.



477
9½ in. Pickle



1309
5 in. Globe Flower Holder



6004
6 in. Ftd. Flower Holder

ELAINE ILLUSTRATIONS



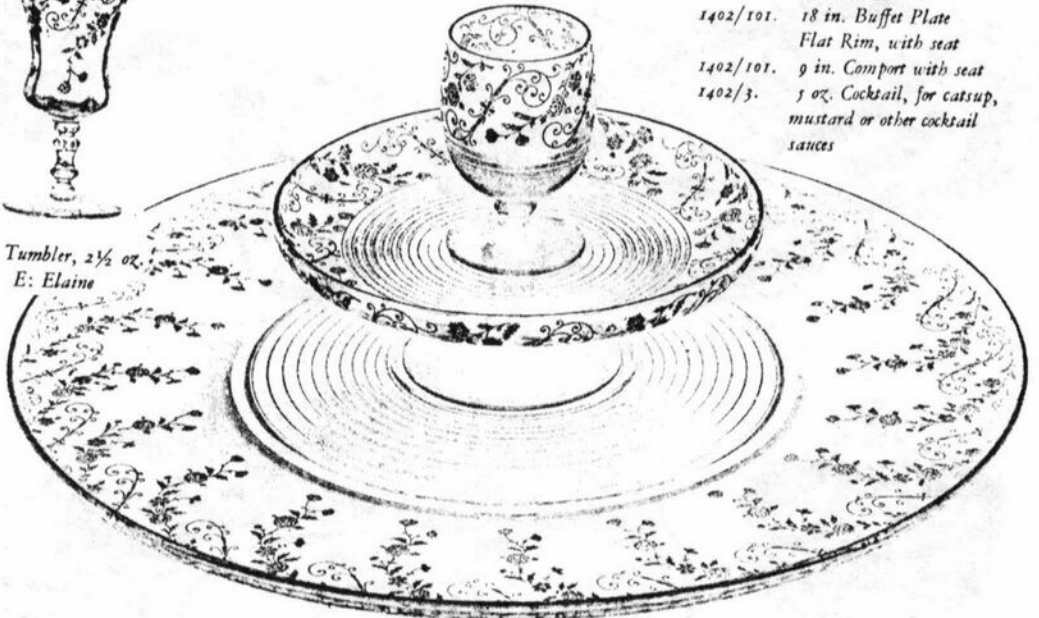
Goblet, Long Bowl
E: Elaine



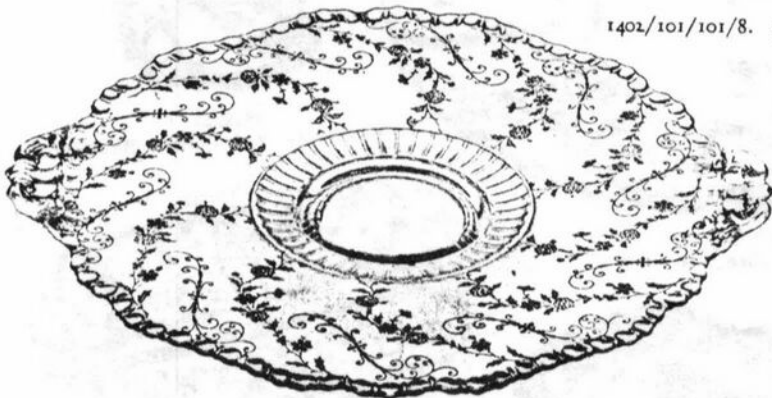
Cocktail
E: Elaine



Ftd. Tumbler, 2 1/2 oz.
E: Elaine

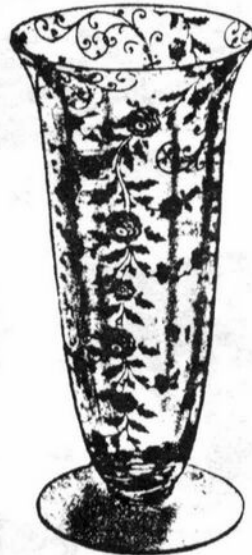


Set
Consists of
1402/101. 18 in. Buffet Plate
Flat Rim, with seat
1402/101. 9 in. Comport with seat
1402/3. 5 oz. Cocktail, for catsup,
mustard or other cocktail
sauces



3500/39. 12 in. Ftd.
Sandwich Plate
E: Elaine

1402/101/101/8. 3-PC. BUFFET OR SUNDAY EVENING SUPPER SET



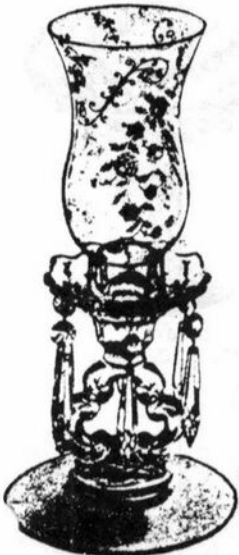
278
11 in. Ftd. Flower Holder



3500
5 oz. Parfait



3500
1 oz. Cordial



1603
Hurricane Lamp



1617
Hurricane Lamp



3800/67
5 in. Candlestick



968
2 pc. Cocktail Icer

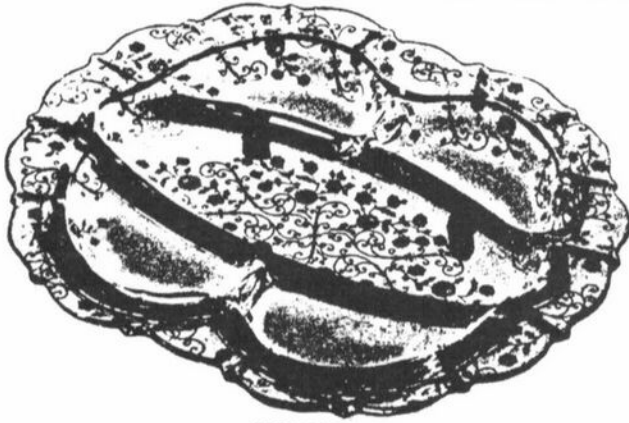


3121
5 1/2 in. Blown Comport



3500/101
5 1/2 in. Tall Comport

ELAINE ILLUSTRATIONS



3900/120
12 in. 5 part Celery & Relish



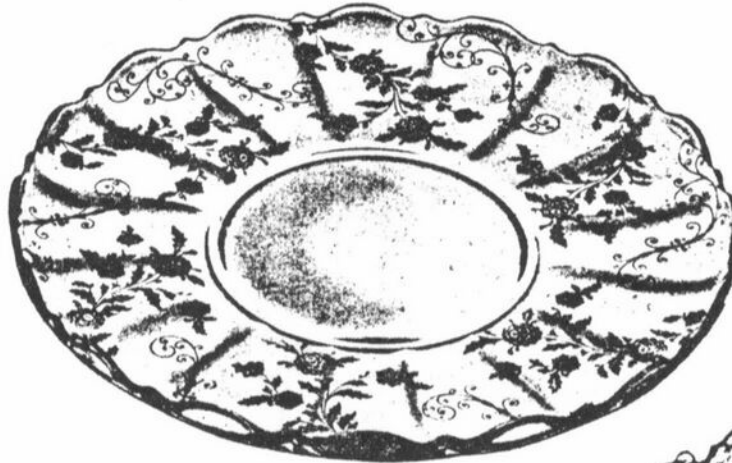
3900/115
13 oz. Tumbler



3900/65
12 in. 4 Ftd. Oval Bowl



3900/165
Candy Box & Cover



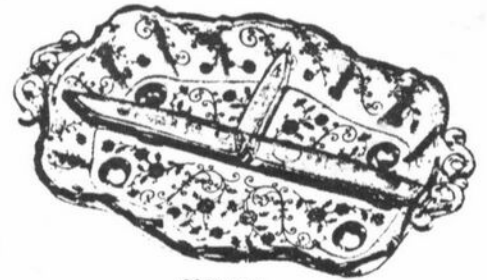
3900/166
14 in. Plate, r. e.



3900/671
Ice Bucket with Chrome Handle



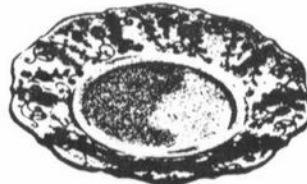
3900/17
Cup & Saucer



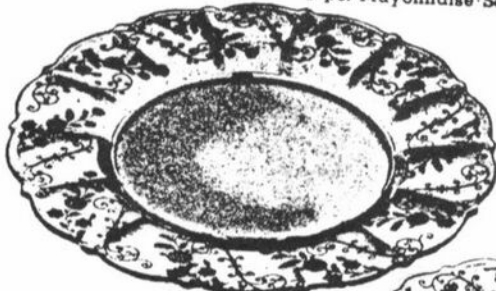
3900/125
9 in. 3 part Celery & Relish



3900/19
2 pc. Mayonnaise Set



3900/20
6½ in. Bread & Butter Plate



3900/24
10½ in. Dinner Plate



3900/41
Sugar & Cream



3900/136
5½ in. Comport



3900/129
3 pc. Mayonnaise Set



3900/1177
Salt & Pepper Shaker (doz. pr.)



3900/100
6 oz. Oil, g. s.

ELAINE ILLUSTRATIONS

3104 STEMWARE



3121
10 oz. Goblet



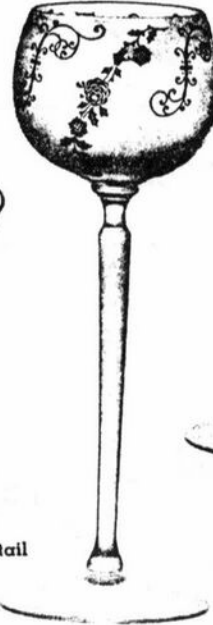
3121
1 oz. Cordial



3121
6 oz. Tall Sherbet



3121
4½ oz. Oyster Cocktail



5 oz. Roemer



9 oz. Goblet



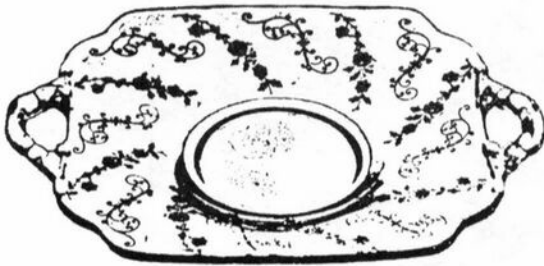
2 oz. Sherry



3400/1180
5¼ in. 2 Hdl. Bonbon



Finger Bowl and Plate



3400/1181
6 in. 2 Hdl. Plate



1 oz. Cordial



3500/15
Ind. Sugar & Cream



3500/55
6 in. 2 Hdl. Ftd. Basket



3500/69
6½ in. 3 part Relish

— Classified —

WANTED TO BUY: Decagon Dinnerware, pale (Willow) Blue, etched Cleo. Eight #865 cups and saucers, eight #811 9½" plates, eight #3077 Stemware 6 oz. tall sherbets and eight 10 oz. footed tumblers. **MARY PFANENSTIEL**, 4740 Alta Vista Circle, Dallas, Texas 75229.

BUYING: Cambridge Rosepoint, Heisey Rose and Orchid, Fostoria etched dinnerware and Depression Glass. Also glass figures and unusual glass pieces. **NADINE PANKOW**, 207 S. Oakwood, Willow Springs, ILL. 60480, Phone: 312-839-5231.

"I mistrust the judgment of every man in a case in which his own wishes are concerned."
WELLINGTON

The ad below appeared in the April 1940 issue of House and Garden Magazine. The cutting on the vase to the left is Celestial #600, and the two vases on the right are cut with Windsor #500. This ad was sent to us by Ted and Shirley Hirshberg of California.

Hand-Cut DeLuxe Crystal

By a newly developed process, Cambridge now offers what it believes to be the most brilliant and beautiful glassware ever created for your home's adornment—*Hand-Cut DeLuxe Crystal*, of such clear, lustrous, gem-like quality as to distinguish it even from the finest of American glassware heretofore available. Leading stores are now featuring these masterpieces.

The Cambridge Glass Co.
Cambridge, Ohio



Make this "Spot test, side by side. You'll instantly see the remarkable difference in Cambridge hand-cut DeLuxe Crystal.



Cambridge Glass

HANDMADE

Good glass, china and silverware have always belonged together. Look at the Star candelholder Oneida choose to help sell their silverplate — an example of the popularity of Cambridge Glass among its peers. Taken from *AMERICAN HOME* — June, 1937

HERALDING *bright years*

May every plan for your future remain as bright and undimmed as your service of Heirloom Plate—a symbol of lasting happiness through the years. CHATEAU is rich with the traditional lilies of the bride. LONGCHAMPS is serenely, superbly severe. And the price? That's good tidings, too. . . Services start at \$30.00 . . . teaspoons are \$3.50 a set.



Heirloom Plate

SILVERWARE CREATED FOR THOSE WHO SEEK THE FINEST

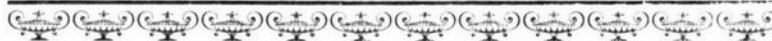
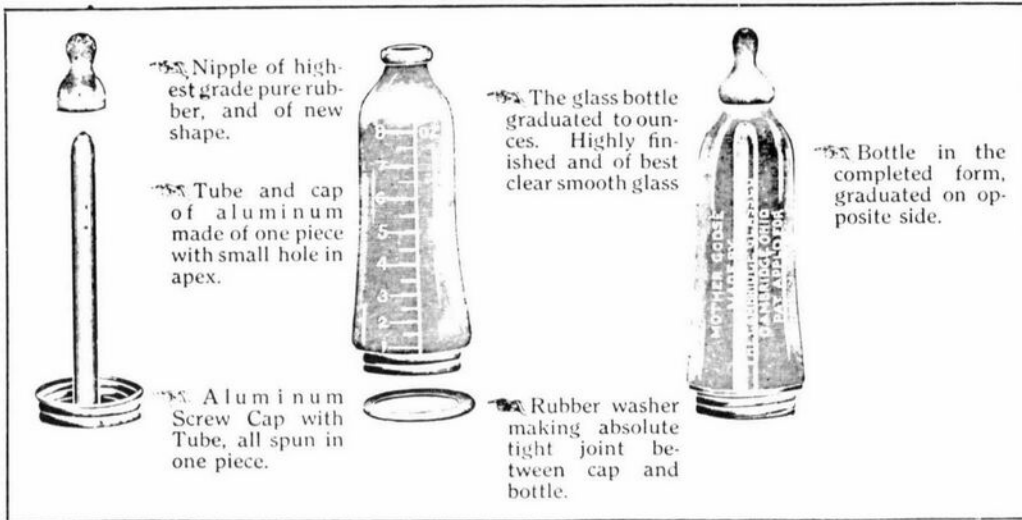
© 1937 Oneida Ltd. Mfrs.

The Mother Goose Nursing Bottle

STRICTLY SANITARY

Fully Protected by Patents

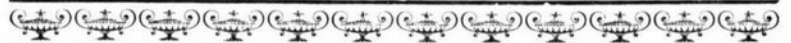
Made and Sold by
THE CAMBRIDGE GLASS COMPANY
Cambridge, Ohio, U. S. A.



THE MOST SANITARY BOTTLE made. Easily taken apart, wide open ends, makes easy cleaning; all parts are very simple, and made of the smoothest and best material.

The objectionable rubber coming in contact with the milk is reduced to a minimum.

Absolutely "Non-Colic." The small hole in the apex of the aluminum tube allows the air to flow into the bottle and prevents the nipple from collapsing.



The admission of air with the milk is strongly advocated by eminent doctors.

When reheating the center tube has great advantage over ordinary bottles, as it permits the heat to rise in center and causes uniformity of temperature.

The Glass being open at both ends lends strength, and it will resist a hard knock before breaking.



1. Round Corner Square Candy Jar.



2. Bevel Corner Square Candy Jar.



3. Round Candy Jar.



4. Egyptian Candy Jar.



6. 10 lb. Square Show Jar.



7. Round Candy Jar and Cover.



8. 2 lb. Squat Candy Jar. Tall Shape.



9. 4 lb. Octagon Candy Jar.



11. 2 lb. Chewing Gum Jar and Cover.



17. Round Chewing Gum Jar and Cover.



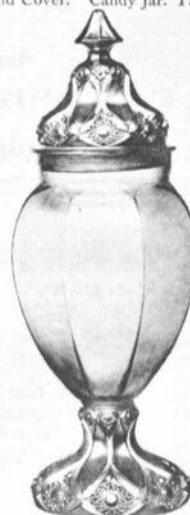
19. Tall Ring Jar and Cover.



25. Squat Ring Jar and Cover.



French Jar and Cover.



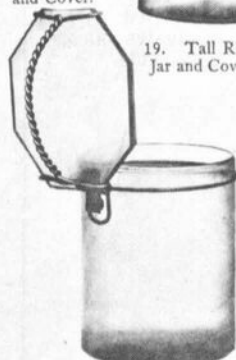
Venetian Jar and Cover.



Roman Jar and Cover.



18. Patented Hinge Cover Jar. (Closed.)



18. Patented Hinge Cover Jar. (Open.)



14. Tall Display Jar and Cover.



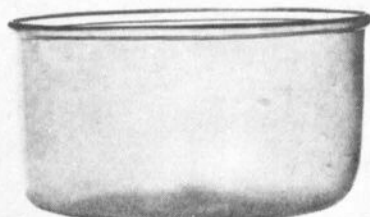
15. Inverted Show Jar.



25. 1 Gal. Display Globe and Cover.



25. Iron Mold Fish Globe, Ground Top.



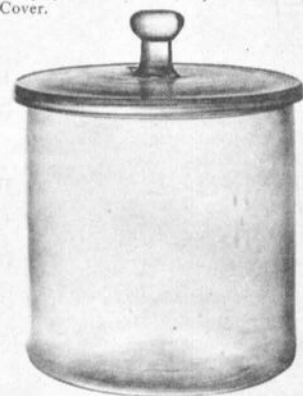
40. Shallow Aquaria or Lemonade Jar.



20. Hand Made Fish Globe, Fire Finished Top.



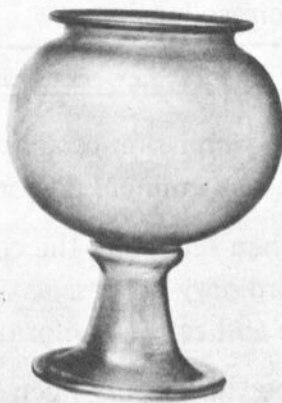
20. Display Globe and Cover.



45. Tall Display Jar and Cover.



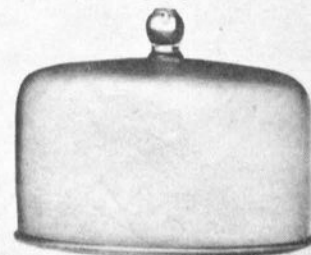
34. Footed Display Globe and Cover.



34. Footed Fish Globe, Hand Made, Fire Finished Top.



45. Tall Aquaria or Lemonade Jar.



Cake or Cheese Cover.

MISCELLANEOUS (cont'd)

| | | Price Per Doz. | Price Each |
|---|-----------------------------|-------------------|---------------|
| *3400/92 | 32 oz. Ball Decanter, g.s. | 51.00 | 4.25 |
| *3400/119 | 12 oz. Ball Decanter, g.s. | 39.00 | 3.25 |
| 3797/85 | 32 oz. Footed Decanter | 120.00 | 10.00 |
| *Also made in Amber and Amethyst | | | |
| *1529 | Decanter, Plain | 51.00 | 4.25 |
| *1529 | Decanter, Eng/Starlite | 78.00 | 6.50 |
| *1529 | Decanter, Eng/Wedding Rings | 78.00 | 6.50 |
| *1529 | Decanter E/Lace | 78.00 | 6.50 |
| *1529 | Decanter E/Lion | 78.00 | 6.50 |
| *1529 | Decanter E/Today | 78.00 | 6.50 |
| *Also made in Moonlight Blue, Smoke, Mandarin Gold, Pistachio, and Pink | | | |
| 1380 | 26 oz. Decanter E/Scotch | 90.00 | 7.50 |
| 1380 | 26 oz. Decanter E/Bourbon | 90.00 | 7.50 |
| 1380 | 26 oz. Decanter E/Rye | 90.00 | 7.50 |
| 1380 | 26 oz. Decanter E/Gin | 90.00 | 7.50 |
| 1541 | Decanter E/Bourbon | 66.00 | 5.50 |
| 1541 | Decanter E/Rye | 66.00 | 5.50 |
| 1541 | Decanter E/Scotch | 66.00 | 5.50 |
| 1541 | Decanter E/Gin | 66.00 | 5.50 |

DECANTER SETS

| | | | |
|--|--|-------------|--|
| *1070 | 7 pc. Pinch Decanter Set | \$ 6.25 set | |
| *1321/7966 | 7 pc. Sherry Set | 14.50 set | |
| *1321/3400/92 | 7 pc. Wine Set | 7.75 set | |
| *3400/92 | 7 pc. Ball Decanter Set | 7.25 set | |
| *3400/92/1901 | 7 pc. Ball Wine Set | 7.25 set | |
| *3400/119/1341 | 7 pc. Ball Cordial Set | 6.25 set | |
| *3400/119/1900 | 7 pc. Ball Cordial Set | 6.25 set | |
| *Also made in Amber and Amethyst | | | |
| 3797/86 | 7 pc. Wine Set | 20.70 set | |
| 3797/87 | 7 pc. Cordial Set | 20.70 set | |
| *1529/1900 | 7 pc. Cordial Set (colored decanter, crystal tumbler) | 7.25 set | |
| *Also made in Moonlight Blue, Smoke, Mandarin Gold, Pistachio and Pink | | | |
| 1900 | 1 oz. Cordial Tumbler | .50 ea. | |

DEVEILED EGG PLATE

| | | | |
|-------|--|---------|--------|
| M.157 | Deveiled Egg Plate (Pat. No. 112,168) | \$39.60 | \$3.30 |
|-------|--|---------|--------|

DINNER BELLS

| | | | |
|---------|-------------------|---------|--------|
| 3750 | Bell, Plain | \$27.00 | \$2.25 |
| Regency | Bell, Plain | 27.00 | 2.25 |
| 3121 | Bell E/Rose Point | 36.00 | 3.00 |
| 3750 | Bell Eng/Starlite | 36.00 | 3.00 |

EPERGNES

(Patent No. 1,977,816)

| | | | |
|---------|--|----------|---------|
| 5 | Cambridge Arms Unit Epergne | \$142.56 | \$11.88 |
| 333 | Epergne (1-1437-2 vases) | 92.40 | 7.70 |
| 334 | Epergne (1-1437 Arm 2 6-in. Vases) | 136.80 | 11.40 |
| 645 | 3-lite (1438 Arm, 1 No. 19 bobeche, 8 prisms, 2 vases) | 144.00 | 12.00 |
| 663 | 3-lite (1 1438 Arm, 2 vases—1307) | 92.40 | 7.70 |
| 1357 | 3-lite (1438 Arm, 2 vases) | 158.40 | 13.20 |
| 1358 | 3-lite (1 1438 Arm, 2 No. 19 bobeche, 16 prisms, 2 vases) | 270.00 | 22.50 |
| 3900/75 | Epergne (1 1437 Arm, 2 vases) | 92.40 | 7.70 |

MISCELLANEOUS (cont'd)

FLOWER BLOCKS

| | | Price Per Doz. | Price Each |
|------|---|-------------------|---------------|
| 2899 | 2¼ in. Flower Block | \$ 8.40 | \$.70 |
| 2899 | 3 in. Flower Block | 10.80 | .90 |
| 2899 | 3½ in. Flower Block | 14.40 | 1.20 |
| 518 | 8½ in. Figure Flower Holder (Girl) | 39.00 | 3.25 |
| 1114 | 6 in. Figure Flower Holder (Girl) | 30.00 | 2.50 |
| 1136 | 9 in. Figure Flower Holder (Heron) | 39.00 | 3.25 |
| 1138 | 8½ in. Figure Flower Holder (Sea Gull) | 54.00 | 4.50 |

FRENCH DRESSING BOTTLE

| | | | |
|------|-----------------------------|---------|--------|
| 1263 | g.s. French Dressing Bottle | \$42.00 | \$3.50 |
| 1263 | g.s. Etched Oil and Vinegar | 54.00 | 4.50 |

HURRICANE LAMPS

| | | | |
|---------|--|----------|---------|
| 1603 | 10 in. (648 Candlestick No. 27 Bobeche, 6 prisms and Chimney) | \$96.00 | \$8.00 |
| 1613 | 17 in. (No. 29 Bobeche, 8 No. 1 3-in. prisms) | 165.00 | 13.75 |
| 1617 | 9 in. Hurricane Lamp | 36.00 | 3.00 |
| 3797/68 | 7 in. Hurricane Lamp | 36.00 | 3.00 |
| 1613 | Eng/Jefferson | \$297.00 | \$24.75 |
| 1613 | Eng/919 | 297.00 | 24.75 |
| 1613 | Eng/723 | 330.00 | 27.50 |
| 1613 | Eng/Manhattan | 225.00 | 18.75 |
| 1613 | Eng/Manor | 297.00 | 24.75 |

ICE BUCKETS AND TONGS

| | | | |
|-------------|--|---------|--------|
| 3900/671 | Ice Bucket | \$39.00 | \$3.25 |
| 3900/671 | Ice Bucket with Chrome Hdl. | 48.00 | 4.00 |
| 3900/671 | Ice Bucket with Chrome Handle and Tongs | 57.60 | 4.80 |
| Caprice 201 | Ice Bucket with Handle | 39.00 | 3.25 |
| Caprice 201 | Ice Bucket with Handle and Tongs | 48.00 | 4.00 |
| | Ice Tongs (Long) | 9.60 | .80 |
| | Ice Tongs (Short) | 9.00 | .75 |

JUGS

| | | | |
|---|----------------------------|---------|--------|
| 3900/114 | 32 oz. Martini (Not Optic) | \$39.00 | \$3.25 |
| *3900/115 | 76 oz. Jug | 54.00 | 4.50 |
| *3900/117 | 20 oz. Jug | 33.00 | 2.75 |
| *3900/118 | 32 oz. Jug | 36.00 | 3.00 |
| *Also made in Amber, Amethyst, Mandarin Gold, Emerald Green | | | |

JUG SETS

(Made in Crystal, Amber, Amethyst,
Mandarin Gold, and Emerald)

| | | | |
|--------------|------------------------|------------|--|
| 3900/115/115 | 7 pc. Set (76 oz. Jug) | \$9.90 set | |
| 3900/117/117 | 7 pc. Set (20 oz. Jug) | 7.25 set | |
| 3900/118/117 | 7 pc. Set (32 oz. Jug) | 7.50 set | |

MARMALADES AND MUSTARDS

| | | | |
|-----|---------------------------|---------|--------|
| 147 | 8 oz. Marmalade and Cover | \$19.80 | \$1.65 |
| 151 | 3 oz. Mustard and Cover | 15.00 | 1.25 |
| 298 | 7 oz. Marmalade and Cover | 19.80 | 1.65 |
| | Marmalade Spoon | 3.00 | .25 |
| | Mustard Spoon | 1.80 | .15 |

MISCELLANEOUS (cont'd)

| | | Price Per Doz. | Price Each |
|-------------------------|------------------------|-------------------|---------------|
| MAYONNAISE LADLE | | | |
| 445 | Mayonnaise Ladle | \$ 9.60 | \$.80 |

| | | | |
|----------------|-----------------------|---------|--------|
| MUDDLER | | | |
| 1 | Twisted Muddler | \$ 9.60 | \$.80 |

| OILS | | | |
|--------------|----------------------|---------|--------|
| 3900/100 | 6 oz. Oil, g.s. | \$30.00 | \$2.50 |
| Caprice 117 | 3 oz. Oil, g.s. | 27.00 | 2.25 |
| Pristine 290 | 6 oz. Oil | 30.00 | 2.50 |
| 3797/100 | 4½ oz. Oil | 33.00 | 2.75 |

| PUNCH BOWL, CUPS AND LADLES | | | |
|------------------------------------|-------------------------------------|----------|---------|
| 1221 | 16 in. Swan | \$211.20 | \$17.60 |
| 1221 | Base | 33.00 | 2.75 |
| 1221 | 5 oz. Footed Swan Cup | 12.00 | 1.00 |
| 3200 | 12½ in. Bowl (6 Quarts) | 165.00 | 13.75 |
| 3200 | Base | 39.00 | 3.25 |
| 3200 | 5 oz. Cup | 12.00 | 1.00 |
| Cascade 478 | 15 in. Punch Bowl (10 qt.) | 211.20 | 17.60 |
| Cascade 479 | 21 in. Plate | 264.00 | 22.00 |
| Cascade 488 | 5 oz. Punch Cup | 12.00 | 1.00 |
| Cascade 216 | Base | 39.00 | 3.25 |
| Martha 478 | 15 in. Fld. Bowl (10 Quarts) | 211.20 | 17.60 |
| Martha 488 | 5 oz. Cup | 12.00 | 1.00 |
| Martha 129 | 18 in. Serving Tray | 144.00 | 12.00 |
| Pristine 476 | 11½ in. Bowl (5 Quarts) | 125.40 | 10.45 |
| Pristine 486 | 5 oz. Cup | 18.00 | 1.50 |
| Pristine 169 | 16½ in. Tray | 144.00 | 12.00 |
| Pristine 15 | 6 oz. Cup (open handle) | 13.20 | 1.10 |
| 3797/476 | 11½ in. Punch Bowl (5 Quarts) | 144.00 | 12.00 |
| 3797/15 | 6 oz. Punch Cup (open handle) | 13.20 | 1.10 |
| | Chrome Punch Ladle | 27.00 | 2.25 |

| PUNCH SETS | | | |
|--|---|------------------|---------|
| (Prices Are Per Set) | | | |
| (Each Set Packed in Individual Carton) | | | |
| 1-- 1221 Swan (5 quarts) | } | 15 pc. set... | \$33.00 |
| 1-- 1221 Base | | | |
| 12-- 1221 Cup | | | |
| 1-- Chrome Ladle | } | 15 pc. set... | \$26.50 |
| 1-- 3200 Bowl (6 quarts) | | | |
| 1-- 3200 Base | | | |
| 12-- 3200 Cup | } | 15 pc. set... | \$29.75 |
| 1-- Chrome Ladle | | | |
| Cascade 478/216/488 | | | |
| Cascade 478/479/488 | } | 15 pc. set... | \$46.25 |
| Set with Chrome Ladle | | | |
| Cascade 478/479/488/216 | | | |
| Set with Chrome Ladle | } | 15 pc. Set | \$36.50 |
| 1--Martha 478 Bowl (10 Quarts) | | | |
| 12-- Martha 488 Cup | | | |
| 1--Martha 129 Plate | } | 15 pc. Set | \$36.50 |
| 1-- Chrome Ladle | | | |
| 1-- Pristine 476 Bowl (5 Quarts) | | | |
| 12-- Pristine 486 Cup | } | 15 pc. Set | \$36.50 |
| 1-- Pristine 169 Plate | | | |
| 1-- Chrome Ladle | | | |

MISCELLANEOUS (cont'd)

| | | Price Per Doz. | Price Each |
|--|---|-------------------|---------------|
| 1--Pristine 476 Bowl (5 Quarts) | } | 14 pc. Set | \$25.50 |
| 12--Pristine 15 Cup, open handle | | | |
| 1--Chrome Ladle | | | |
| 1--3797/476 Bowl (5 Quarts) | } | 13 pc. Set | \$25.00 |
| 12--3797/15 Punch Cups | | | |
| 476/486/169 14 pc. Punch Set--Eng/Starlite | | | |
| 476/486/169 14 pc. Punch Set--Decorated Gold | | \$145.50 | |

| SALAD PLATES | | | |
|---------------------|---------------------------------|---------|--------|
| Martha 122 | 7½ in. Salad Plate | \$16.20 | \$1.35 |
| Martha 123 | 8½ in. Salad Plate | 18.00 | 1.50 |
| 1176 | 8½ in. Square Salad Plate | 18.00 | 1.50 |

SALT AND PEPPER SHAKERS
(Prices are per Dozen Pairs)

| Chrome Tops | | | |
|--------------------|--|---------|--------|
| 1203 | Individual Salt & Pepper | \$18.00 | \$1.50 |
| 1258 | Salt & Pepper Shaker | 24.00 | 2.00 |
| 1262 | Salt & Pepper Shaker | 24.00 | 2.00 |
| 1465 | Cut Salt & Pepper Shaker | 30.00 | 2.50 |
| 1476 | Tall Salt & Pepper Shaker | 27.00 | 2.25 |
| 3900/1177 | Salt & Pepper Shaker | 24.00 | 2.00 |
| Caprice 96 | Salt & Pepper Shaker | 21.00 | 1.75 |
| Mt. Vern. 89 | Tall Salt & Pepper Shaker | 27.00 | 2.25 |
| Pristine 358 | Individual Salt & Pepper Shakers | 24.00 | 2.00 |
| Pristine 360 | Salt & Pepper Shaker | 24.00 | 2.00 |
| 3797/76 | Salt & Pepper Shaker | 27.00 | 2.25 |
| 1956/105 | Salt & Pepper Shaker | 30.00 | 2.50 |

| SALT AND PEPPER SHAKERS--BOXED | | | |
|---------------------------------------|----------------------------|---------|--------|
| P. 360 | Salt & Pepper, Boxed | \$27.00 | \$2.25 |
| 1258 | Salt & Pepper, Boxed | 27.00 | 2.25 |
| MV-89 | Salt & Pepper, Boxed | 30.00 | 2.50 |
| C-96 | Salt & Pepper, Boxed | 27.00 | 2.25 |
| 3797/76 | Salt & Pepper, Boxed | 33.00 | 2.75 |

| SALT AND PEPPER SET | | | |
|----------------------------|-------------------------------|---------|--------|
| Pristine 361 | 3 pc. Salt & Pepper Set | \$36.00 | \$3.00 |

| OPEN SALTS | | | |
|-------------------|------------------------|---------|--------|
| 1525 | 1 in. Square | \$ 3.60 | \$.30 |
| 1525 | 8 pc. Set in Box | 28.80 | 2.40 |
| | Salt Spoon | 1.80 | .15 |

| SMOKERS' ITEMS | | | |
|---|---------------------------------------|-----------------------|--------|
| 390 | 6 in. Ash Tray | Crys. & Amber \$27.00 | \$2.25 |
| 391 | 8 in. Ash Tray | Crys. & Amber 39.00 | 3.25 |
| 1040 | 3 in. Swan Ash Tray | 9.00 | .75 |
| *1956/1 | 10 in. Ash Tray (Cut top only) | 48.00 | 4.00 |
| *1956/1 | 10 in. Ash Tray, Plain | 36.00 | 3.00 |
| **1956/2 | 10 in. Ash Tray w/Peg | 36.00 | 3.00 |
| *1956/5 | 8 in. Ash Tray (Cut top only) | 30.00 | 2.50 |
| *1956/5 | 8 in. Ash Tray, Plain | 24.00 | 2.00 |
| *Also made in Pink, Smoke, Pistachio, Mandarin Gold, and Moonlight Blue | | | |
| **Crystal and Smoke only | | | |
| 1956/10 | Coaster Ash Tray & Spoon Holder | 15.00 | 1.25 |
| 3797/150 | 6½ in. Ash Tray | 30.00 | 2.50 |

15th Annual Antique Show & Sale

Arts & Crafts Building - Ohio State Fairgrounds

Exit 17th Avenue I-71 • Columbus, Ohio

Saturday, February 12, 1983 • 11 a.m. to 9 p.m.

Sunday, February 13, 1983 • 12 Noon to 6 p.m.

Sponsored By

**Xi Eta Lambda Chapter of Beta Sigma Phi
of Reynoldsburg, Ohio**

Show Chairman

Patsy Youtz

1519 Lexdale Drive
Reynoldsburg, Ohio 43068

Show Manager

George Hoffman

129 S. Fourth Street
Newark, Ohio 43055
614-345-8021

Benefit: Truro Township Fire Department
and Reynoldsburg Police Department

Donation: \$1.50

STAGE COACH ANTIQUE MALL

(formerly White Pillars Antiques)

7525 East Pike

Norwich, OH 43767

614/872-3720

MANY DEALERS

PLENTY OF PARKING

WIDE SELECTION OF GLASS

AND POTTERY

FURNITURE AND

GENERAL LINE!

BUY ----- SELL ----- TRADE

OPEN YEAR ROUND

Weekdays - 10 AM - 5:30 PM

Sunday - 12 noon - 5:30 PM

Summer Evening Hours - by Chancel

Located 9 miles E. of Zanesville, OH, on I-70 to Norwich
Exit #164 - then 1/2 mile W. on Route 40.

COLUMBUS, OHIO ANTIQU FLEA MARKET

Ohio State Fairgrounds - Lausche Building
Off I-71 Exit 17th Avenue - Columbus, Ohio

FEBRUARY 27th

Sunday Only - 7 A.M. to 4 P.M.

Show Admission \$1.00 - Under 12 Free

150 QUALITY DEALERS

SELLING: Advertising Art Deco, books, Cambridge, clocks, coins, collec-
tibles, Depression glass, dolls, Fiesta, fine early furniture, Heisey, jewelry,
lamps, oak furniture, post cards, pottery, good primitives, tools and print
shop items.

**Rain
or
Shine**

STOCKWELL PROMOTIONS

4214 North High Street
Columbus, Ohio 43214
(614) 267-8163/263-6830/885-2352

**Rain
or
Shine**

**NEXT SHOWS: April 17th, May 22nd, June 26th
Racetrack Sept. 18th, Oct. 2nd, Nov. 20th, Dec. 11th**

THE MAGICAL UNICORN

Rt. No. 2
New Concord, Ohio 43762
Ph. (614) 826-7140

| | |
|--|-----------|
| 3400/103-6½" Royal Blue vase..... | \$45 |
| 3400/1240-oval 'Banana' bowl, Candlelight..... | \$75 |
| 1238-12" Vase, Rose Point..... | \$65 |
| 487 Apple Green (Light Emerald), 12" Wildflower cheese/cracker (comport not etched) | \$50 |
| 3121-7" Candlestick w/bobeche & prisms | \$55 |
| 3400/4-12" Bowl, Rose Point | \$55 |
| 856-11" Flip Bowl w/No. 627 candlesticks, Peach Blo, Cleo..... | set \$85 |
| Crystal Caprice 8" bowl w/low candlesticks | set \$75 |
| Pair 3 lite ring stem candlesticks, decorated base | \$50 |
| Crown Tuscan covered shell comport w/hand decorated roses | \$95 |
| Rose Point Butter dish w/dome top | \$150 |
| 977-11" basket, folded sides Cleo dish, Moonlight Blue | \$48 |
| 4" Moonlight Blue Alpine shell (2) | each \$30 |
| Square salt w/sterling spoon in original box | \$25 |
| 1076-Royal Blue cream/sugar | \$35 |
| Apple Green (Light Emerald) mayo set, dish, lid, plate, ladle..... | \$55 |
| Caprice, Moonlight Blue cream/sugar | \$40 |
| 300 Ebony candy w/gold encrusted Wildflower..... | \$150 |
| 12" Caprice belled bowl w/tall candlesticks, Seagull flower holder | \$150 |
| Caprice Moonlight Blue 80 Oz. Ball Jug..... | \$175 |
| 1139-14" Swan, Peach Blow flip bowl | \$90 |
| 3400/32-11½" Wildflower bowl..... | \$75 |
| 54-7" Mt. Vernon vase | \$40 |
| Moonlight Blue Caprice tall candlesticks | \$65 |
| Crystal Alpine Caprice tall candlesticks | \$55 |
| 3500/68-5½" Chantilly 2 section dish w/sterling base..... | \$45 |
| Ebony decorated 12" flip bowl, No. 975 etch | \$55 |
| 3900-Rose Point comport | \$55 |
| 3900-Rose Point cream/sugar..... | \$40 |
| Crystal Caprice 80 Oz. Ball Jug | \$95 |
| 3500-Rose Point cream/sugar..... | \$40 |
| 9" Chantilly on Martha Plate | \$40 |
| 3400 Amber Diane cheese/cracker set (both pieces etched) | \$70 |
| 12" Apple Green (Light Emerald) bowl, gold encrusted Hunt Scene | \$80 |
| 627-Ebony candlesticks..... | pair \$35 |
| 193-6 Oz. marked vinegar/oil bottle..... | \$45 |
| Imperial Blue Carnival "Cambridge" Ram's Head bowl..... | \$75 |

SHIPPING EXTRA

DEALERS



DIRECTORY

NOTE: When writing to the Dealers listed here, please enclose a SASE!

| | | |
|--|---|--|
| <p>EVELYN M. ALLEN 135 Cynthia Street Heath, Ohio 43055 Mail Order & Shows 614-522-1635 SPECIALIZING IN CAMBRIDGE GLASS!</p> | <p>BENICIA ANTIQUE SHOP 305 First Street Benicia, California 94510 OPEN 11 AM - 5 PM Closed Monday Z. E. LOPES 707-745-0978</p> | <p>CHARLES MIKULIK Box 416 Elizabeth, N.J. 07207 — COLLECTOR — Always paying good prices for CAMBRIDGE CAPRICE in all colors 201-372-1101 CARRY MOST TYPES OF ANTIQUES</p> |
| <p>DAVID NIELSEN 109 Lincolnway LaPorte, Indiana 219-326-7276 CAMBRIDGE - HEISEY - GENERAL LINE</p> | <p>VISIT HISTORIC BENICIA and its 28 shops Off Interstate #80 North of San Francisco</p> | |
| <p>BERKELEY ANTIQUES 69 Berkeley St. Boston, MA 02116 George or Frank 617-426-1048 CAMBRIDGE, HEISEY, GENERAL LINE</p> | <p>ANDREJCAK'S ANTIQUES 14533 Bayes Ave. Lakewood, Ohio 44107 Joe & Karen Andrejcek 216-226-3417 SHOWS ONLY — CAMBRIDGE — FENTON — CHINA</p> | <p>A. SPRINGBORN 5434 Windridge Lane Orlando, Florida 32810 SHOP No. 34 — WEBSTER, FL. Open Every Monday 305/298-3011</p> |
| <p>D & D ANTIQUES Columbus, Ohio DICK SLIFKO SHOWS ONLY</p> | <p>THE HITCHING POST 7467 S. R. 88 Ravenna, OH 44266 Ph. 216-296-3686 D. McDaniel CAMBRIDGE — HEISEY — GENERAL LINE</p> | <p>FINDER'S KEEPER'S ANTIQUES P.O. Box 303 P.O. Box 16023 Dayton, O. Columbus, O. 45401 43216 513-254-2937 614-885-2726 SPECIALIZING IN CAMBRIDGE GLASS!</p> |
| <p>THE GLASS CUPBOARD 39 Shire Oaks Drive Pittsford, New York 14534 Marcia Ellis 716-586-7596 CAMBRIDGE ONLY INQUIRIES INVITED</p> | <p>GEORGE HOFFMAN ANTIQUES 129 South 4th Street Newark, Ohio 43055 614-345-8021</p> | <p>SNYDER ANTIQUES P.O. Box 010 Gates Mills, Ohio 44040 SPECIALIZING IN CAMBRIDGE GLASS Mail Order, Shows 216-461-2110 By Appointment</p> |
| <p>JOHN PARR ROBERT PARR "UP TO PARR" Stoves, Depression Glass, Fostoria Cambridge, Heisey, Rugs, Antiques Art Deco, Fiesta, Collectibles Tues - Sat 2-7 p m (415) 552-9337 592 GUERRERO ST SHOP & RESIDENCE SAN FRANCISCO, CA 94110</p> | <p>J & L GLASS Laws Antique Center, Manassas, VA 22111 and 10629 Main St. Fairfax, VA 22030 703/273-8579 BUY & SELL: Depression, Cambridge, Heisey, Duncan & Fostoria Glass</p> | <p>1886 HOUSE East Schodack, N.Y. 12063 MAIL and SHOWS Laurie Cruise 518-477-5895 CAMBRIDGE - NORITAKE - AZALEA - D.G.</p> |
| <p>joyce's antiques Bought and Sold Specializing in HEISEY • CAMBRIDGE • VERLYS • AMERICAN GLASS P O Box 114 Albertson N Y 11507 (516) 499-3396</p> | <p>GLASS RAINBOW of California Glass of the Depression Era In Historic Folsom 813-F Sutter Street Folsom, California 95630 (Sacramento Area) Neil and Ervina McCartney Shop (916) 985 2386 Res. (916) 685 5485</p> | <p>BILL & SHARON PHILLIPS 21730 Priday Euclid, Ohio 44123 Ph. 216-261-4665 Shows Only BUYING GLASS, ANTIQUES, ETC.</p> |
| <p>CHARLES A. SHAW P.O. Box 147 Church St. New York, NY 10008-147 Phone (914) 476-6590 AMERICAN GLASS SHOWS & MAIL ORDER</p> | <p>AL STEELE Westerville, Ohio 614-882-6483 or 614-882-7124 Mail Orders and Shows Only HEISEY — CAMBRIDGE — PATTERN GLASS</p> | <p>BETTY'S ICE HOUSE ANTIQUES 517 Fulton Street Wausau, Wisconsin 54401 Quality Antiques Cambridge - Heisey - General Line Betty R. Puestow Hours 1-5 Daily 715-848-7145 or by appointment</p> |
| <p>MARGARET LANE ANTIQUES 2 E. Main St., New Concord, OH 43762 Lynn Welker 614/826-4418 CAMBRIDGE GLASS MATCHING SERVICE Hours Mon.-Fri. 1-5 PM or by Appointment</p> | <p>SHIRLEY S. LADOUCEUR Antiques and Collectibles Specializing in Cambridge Glass BY APPOINTMENT 7597 Daphne Drive 315-458-5297 No. Syracuse, NY 13212</p> | <p>GREEN ACRES FARM Antiques, Crystal Glass & Collectibles Sat. & Sun. 1-7 PM (614) 927-1882 2678 Hazelton Etna Road (State Route 310 North) Pataskala, Ohio 43062</p> |



National Cambridge Collectors, Inc.

P O Box 416, Cambridge, Ohio 43725

A nonprofit organization dedicated to the preservation and study of Cambridge Glass

The National Cambridge Collectors, Inc. is proud to present an original film produced by the Cambridge Glass Co. in the 1950's. The film is entitled THE CRYSTAL LADY. It is a most interesting film and includes pictures of the factory and the workers making the fine Cambridge Glass. It is a 16mm sound movie that runs about 40 minutes.

The following 5 slide presentations are now available:

No. 1 is on the Display rooms and close-up shots of particular pieces of interest.

No. 2 is of different stems made by Cambridge Glass Co.

No. 3 covers Cambridge Glass candlesticks.

No. 4 is of Cambridge colors.

No. 5 presents Cambridge Glass figurals.

These 5 presentations are available in Kodak carousel slide trays and are supplied with narratives on each slide.

NOTE: NCC Study Clubs may use these presentations free of charge except for postage to and from destination.

TO RESERVE PLEASE CHECK THE ITEM (OR ITEMS) DESIRED.

MAKE CHECK PAYABLE TO: NATIONAL CAMBRIDGE COLLECTORS, INC.

THE CRYSTAL LADY and all 5 slide presentations have a deposit fee of \$25 and a rental fee of \$15 which will be deducted from the deposit fee.

THE CRYSTAL LADY

No. 1 Display rooms and particular pieces

No. 2 Stems

No. 3 Candlesticks

No. 4 Colors

No. 5 Figurals

TOTAL DEPOSIT FEE:

NAME OF ORGANIZATION:

ADDRESS:

CITY & STATE:

ZIP

DATE NEEDED:

National Cambridge Collectors, Inc.

P. O. Box 416
Cambridge, Ohio 43725

FIRST-CLASS MAIL
U.S. POSTAGE
PAID

Cambridge Ohio
43725
Permit No. 1

FIRST CLASS MAIL

NCC QUARTERLY MEETING

Friday, February 25th - 8:00 P.M.

Informative Meeting - Show & Tell - Auction Preview
Bring a friend and your Show & Tell glass

1983 ALL CAMBRIDGE AUCTION

Saturday, February 26th - 11:00 A.M.

1983 NCC CONVENTION &
ANTIQUÉ SHOW & SALE
June 24th, 25th, 26th, 1983

All above events to be held at:

THE SHENANDOAH INN

P.O. Box 147, Old Washington, Ohio 43768
I-70, Exit 186 - 7 miles E. of Cambridge
Phone 614-489-5511
Mention NCC when making reservations

1983 HEISEY COLLECTORS CONVENTION

June 16th-19th, Newark, Ohio