

Cambridge



Crystal Ball

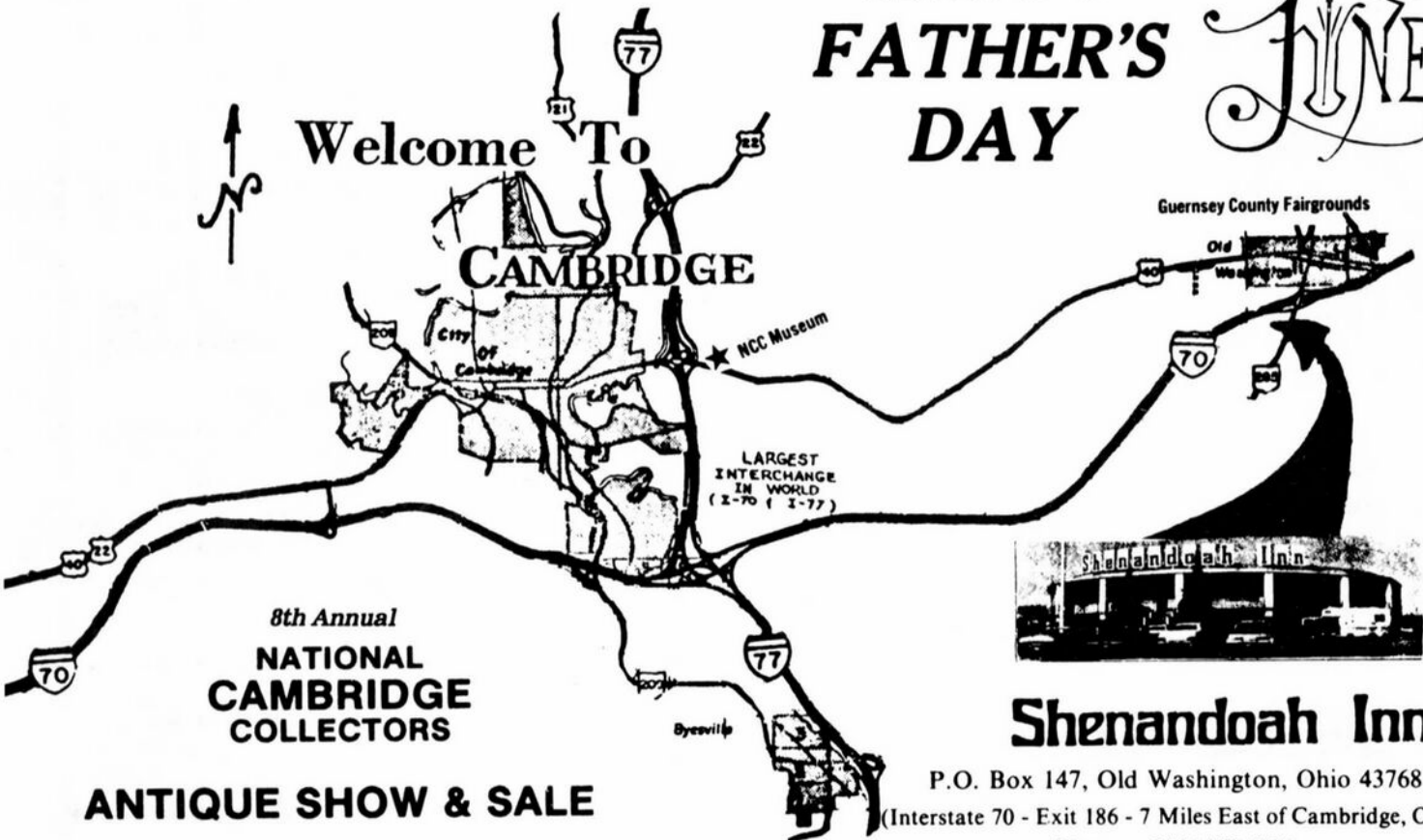
ISSUE NO. 122

JUNE 1983

Published monthly by the NATIONAL CAMBRIDGE COLLECTORS, Inc.
To encourage and to report the discovery of the elegant and boundless product
of the Cambridge Glass Company, Cambridge, Ohio

HAPPY FATHER'S DAY

JUNE



8th Annual
**NATIONAL
CAMBRIDGE
COLLECTORS**

ANTIQUE SHOW & SALE
10th Annual Convention

Shenandoah Inn

P.O. Box 147, Old Washington, Ohio 43768
(Interstate 70 - Exit 186 - 7 Miles East of Cambridge, Ohio)
Phone - 614/489-5511

MEMBERSHIP RENEWAL NOTICE	
If the date on your address label is - -	6-83
This is your LAST ISSUE of the CRYSTAL BALL .	
Please renew NOW!	

JUNE 24, 25, 26, 1983

CAMBRIDGE CRYSTAL BALL

Official publication of National Cambridge Collectors, Inc., a non-profit corporation with tax exempt status. Published once a month for the benefit of its members.

Membership is available for individual members at \$13 per year and additional members (12 years of age and residing in the same household) at \$3 each. All members have voting rights, but only one *Crystal Ball* will be mailed per household.

Back issues of the *Crystal Ball* are available (beginning with Issue No. 1, May 1973) for members only. Cost: \$.60 each or 12 issues for \$7.

1982-83 OFFICERS & COMMITTEE CHAIRPERSONS

PRESIDENT Willard Kolb
 VICE-PRESIDENT Josephine Barstow
 SECRETARY Janice Hughes
 TREASURER William Smith
 SERGEANT-AT-ARMS Don Armbricht

BOOK SALES Billy Harbaugh & Jo Barstow
 BUDGET & FINANCE David Rankin
 BY-LAWS David Rankin
 CONVENTION Josephine Barstow
 MEMBERSHIP Phyllis Smith
 MUSEUM Billy Harbaugh
 PROGRAM & ENTERTAINMENT Frank Wollenhaupt
 PROJECT Willard Kolb
 PUBLIC RELATIONS William Smith
 PUBLICITY Joseph Andrejcek
 1983 AUCTION Lynn Welker
 1983 ANTIQUE SHOW Joy McFadden
 PRINTING & MAKE-UP The Jeffersonian Company

CLASSIFIED ADVERTISING RATES

5c per word \$1.00 minimum
 We cannot mix type size in classified advertisements. Abbreviations and initials will count as words. Payment in full MUST accompany all ads.

DISPLAY ADVERTISING RATES

	Members	Non-Members
1/8 page	\$ 4.00	\$ 6.00
1/4 page	7.00	10.00
1/2 page	12.00	18.00
3/4 page	17.00	25.00
Full page	22.00	33.00

DEALERS DIRECTORY

1" ad (5 line maximum) \$6.00 for 6 months

Cambridge *Crystal Ball* assumes no responsibility for items advertised and will not be responsible for error in price, description or other information.

Advertising copy, articles, and club news and notices must be in our hands by the 10th of each month to assure publication in our next issue. Advertisements containing reproductions will not knowingly be accepted unless clearly stated.

Opinions or information stated in any signed article or letter printed in the *Crystal Ball* are those of the writer only and may or may not agree with National Cambridge Collectors, Inc. The editor reserves the right to refuse or edit material submitted for publication to conform to the editorial style of the *Crystal Ball*.

PLEASE ADDRESS ALL CORRESPONDENCE TO

Cambridge Crystal Ball
 National Cambridge Collectors, Inc.
 P.O. Box 416
 Cambridge, Ohio 43725

Janice Hughes, Secretary Phone 614-432-7823
 Willard Kolb, President Phone 614-695-0695

PLEASE NOTIFY US IMMEDIATELY OF ANY CHANGE IN YOUR ADDRESS!

Please enclose a self-addressed stamped envelope when requesting information!!

TENTH ANNUAL CONVENTION

National Cambridge Collectors, Inc.

June 24, 25, 26, 1983

CONVENTION ACTIVITIES

will be held at the

SHENANDOAH INN

P.O. Box 147, Old Washington, Ohio 43768

(Interstate 70 - Exit 186 - 7 Miles East of Cambridge, Ohio)

Phone 614/489-5511

SCHEDULE OF EVENTS

FRIDAY, June 24th

1:00 PM-4:00 PM REGISTRATION - Room 101
 (ALL Convention Participants -
 MUST BE REGISTERED!)

1:00 PM-..... GLASS FACTORY TOURS - Meet
 at Shenandoah Inn
 (Mosser & Boyd's Crystal Art
 Glass)

6:00 PM-9:00 PM ANTIQUE SHOW & SALE
 PREVIEW - Main Ballroom

9:30 PM-..... GET ACQUAINTED PARTY &
 BIRTHDAY PARTY
 Banquet Room - Pay Bar
 BAND - RARE COMBINATION
 Mini-Auction during intermission

SATURDAY, June 25th

6:00 AM-5:00 PM FLEA MARKET
 Guernsey County Fair Grounds

8:00 AM-10:30 AM REGISTRATION - Banquet Room

8:30 AM-10:30 AM CONTINENTAL BREAKFAST
 Banquet Room
 Speaker - Mrs. Phyllis Smith
 Topic - NCC 10 Year History

11:00 AM-6:00 PM ANTIQUE SHOW & SALE
 Main Ballroom

6:30 PM-7:30 PM COCKTAIL HOUR - Pay Bar
 Banquet Room

7:30 PM-..... ANNUAL CONVENTION
 Banquet - Banquet Room
 Speaker - Mrs. Gwen Shumpert
 Topic - "Treasures in Glass"

SUNDAY, June 26th

9:00 AM-..... BUFFET BREAKFAST
 Banquet Room
 Annual Business Meeting
 "Show & Tell" (after meeting)

12 Noon-6:00 PM ANTIQUE SHOW & SALE
 Main Ballroom

THOUGHTS

From Your President

Is Cambridge Glass really becoming as scarce as it seems? How could the glass produced by the carload by Cambridge Glass in its fifty-three years of operation all of a sudden, seemingly disappear from the market. Perhaps it is only my imagination. I can, however, remember just a few short years ago when I could go to my favorite haunts and find lots of Cambridge Glass, and at very reasonable prices. Admittedly there are quite a few more people collecting Cambridge Glass now than there was then and this would have some bearing on the situation, but there are also more people aware of Cambridge Glass now who buy it to resell, and so it seems the flow should be more stable. (I knew that before I finished this article the solution to my dilemma would come to light. Norma has been reading over my shoulder and she says that Cambridge Glass is not scarce in this area, it is just that people now know more about its worth and price it accordingly and I'm too cheap to pay current prices and therefore act like I don't see it. Now that is her opinion and I don't agree with her because just last week I bought a crystal Draped Lady and paid 5.00 for it.)

I can tell you where you will be able to find a lot of Cambridge Glass and at reasonable prices if you won't tell too many people. Just come to the Shenandoah Inn June 24th, 24th and 26th and attend the 8th annual Antique Show and Sale. You'll find just about any kind of Cambridge Glass you can think of and it will be priced to suit any collector.

Your registration forms were in last months *Crystal Ball*. If you haven't filled yours out yet you'd better do so right away. Deadline is just a few days away, June 10th. Since you are going to be attending the Show and Sale you may as well make plans to stay a few days and attend all of the activities we have planned. Don't forget, its our Tenth Anniversary this year and we have special events planned. I think the Friday evening Birthday Party will be fun for everyone. (Don't forget the voluntary admission to the Birthday Party is a gift for the Museum). We will as usual have a MINI-AUCTION during the Party. Don't forget the dancing, food and the huge Birthday Cake.

You won't want to miss the Saturday morning breakfast featuring Phyllis Smith as our speaker. Her topic will be "The History of NCC". Like wise you won't want to miss our banquet speaker Gwen Shumpert with her topic "Treasures in Glass". I've heard her speak before and believe me you'll be both educated and entertained.

If you get here early on Friday you won't want to miss the GLASS FACTORY TOURS beginning at 1:00 PM. This is your chance to see some fine glass made. Let's see, what else do we have to wet your appetite? Well Larry Hughes says the Saturday Flea Market will be bigger and better than ever this year. If these things aren't enough to make you pack and spend a weekend in Cambridge, how about making plans for a weekend at your Museum and since you'll be so close, just fill in your registration form and attend the Convention while you're here.

Don't forget to mark your ballots and mail before the June 15th deadline and don't forget your registration deadline of June 10th. I hope I get to see everyone of you in June.

Willard



2836. 1/2 Gal. Tankard, Fish.



2836. Tumbler, Fish.

MOTEL REMINDER

Rooms at the Shenandoah Inn are filling fast, so if you have not made reservations you should do so immediately. Write to: Shenandoah Inn, P.O. Box 147, Old Washington, Ohio 43768 or Phone 614-489-5511.

They are offering a special rate of \$20.00 plus tax, for single room for double occupancy, so be sure to mention your NCC affiliation when making your reservations.

Spring Valley Campgrounds
Dozer Rd.
St. Rt. 209 S. off I-70
Phone - 439-9291
\$8.00 - FULL hook-up

BANQUET TABLES

Console bowls and candlesticks are needed for our Convention Banquet Tables. This year's color is pink. If you have any sets or single pieces you could share, PLEASE contact: Karen Jones, P.O. Box 416, Cambridge, Ohio 43725, as soon as possible. PLEASE HELP so our tables will be as beautiful as they were last year!

Study Club News

STUDY GROUP No. 5 - SOUTHERN CALIFORNIA "CALIFORNIA CAMBRIDGE COLLECTORS"

We held our April meeting at Sandi Scott's home. The topic studied this month was the 3400 line. Betty Losch described the items brought by the members. Several good samples of the 3400 line were on display including candy dishes, compotes, salt and peppers, cream and sugar, glasses, cup and saucer, cruet, ice bucket, and candlesticks.

The prize this month was an amber 1066 stem cigarette holder won by Carlene.

Show and tell consisted of a Rosepoint 11" 4 footed cake plate brought by Betty Wanser and a Cambridge round demi tasse cup and saucer in pink, pomona green ice tub, ivory candy dish and lid, and a Rosepoint relish dish shown by Betty Losch.

Sandi served a delicious assortment of refreshments before we began our long trip back to Orange County from the San Fernando Valley.

Next month we will have our annual auction.

STUDY GROUP No. 3 - SOUTHERN FLORIDA "THE FLORIDA EVERGLADES"

The April meeting was held at the home of Mark Nye. We once again turned to the etchings for a subject and topic for the evenings discussion was Plate Etching No. 744 or more popularly called Apple-Blossom. The program was present by Mark and covered all aspects of the etching including available colors, stemwarelines and special decorations incorporating the Apple-Blossom etching. Illustrating the presentation were Apple-Blossom etched pieces in light Emerald, Gold Krystol, Crystal, Peach-blo, Willow Blue, Amber and Forest Green. The information presented to the study group will be incorporated into an article dealing with Apple-Blossom and will appear in a future issue of the *Crystal Ball*.

submitted by Mark Nye, Secretary

STUDY GROUP No. 7 - EASTERN OHIO "THE CAMBRIDGE BUFFS"

The Cambridge Buffs held their April meeting at the home of Dale and Nellie Snode. The topic was Opaque glass - Crown Tuscan. The Show and Tell pieces were compared, such as an inverted strawberry cream and sugar by Fenton and two Cambridge Glass pieces.

Plans were made to do the Banquet tables at Convention.

The next meeting will be at the home of Lena Barnes.

submitted by Deanne Gray

"A liberal is a man who is willing to spend somebody else's money."

CARTER GLASS

STUDY GROUP No. 6 - NEW YORK STATE "THE FINGERLAKES"

The Fingerlakes Study Group met at the home of Sandra O'Donnell in Rome, New York. A particularly lovely Show and Tell consisted of a beautiful set of Martha bobeches with prisms in the Rosepoint etch; a five-inch Cambridge Square candlestick; a set of azurite candlesticks; and an inverted Thistle basket.

Plans were firmed up for the balance of the meetings for the year including dates and projects. Treasure, Sandra O'Donnell, gave a brief report. The balance of the meeting was devoted to finishing our study on cruets and pitchers.

submitted by Sandra O'Donnell

STUDY GROUP No. 10 - LONG ISLAND, NY "THE TUSCAN CROWNS"

Glass goodies abounded on April 14 when the Tuscan Crowns met. What an array of Cambridge! Joyce and Al Colangelo brought two amber Portia gold-encrusted vases; one was the large 11½" vase and the other was a 9¾" keyhole stem vase which went home with Rita Berg! They also showed a crystal Mt. Vernon cordial decanter and 3 cordials. Charlie and Loretta Weeks proudly exhibited their new Crown Tuscan rose enamelled 12" keyhole vase which could be added to Charlie's Crown Tuscan collection. Rick Serzanin showed a very unusual Tally Ho flat 10 oz. tumbler in moonlight blue! This was the first time any of us had ever seen Tally Ho in this color. Barbara Siemsen showed Blue Caprice in molded tall sherbert, 3 oz. and 5 oz. goblets, and a 48 oz. Rosepoint glass-stoppered decanter and a very unusual Rosepoint-etched Pristine 90 "bottle" with the cut-faceted stopper. We spent a great deal of time discussing Long Island pricing for each of our finds, the up-coming convention, and the focus of our future study group meetings.

submitted by, Barbara Siemsen

STUDY GROUP No. 8 - SOUTHERN MICHIGAN "THE MICHIGAN CAPRICES"

On April 8, the Michigan Caprices met at the home of Lee and Martin Coppo for a workshop. We spend a short time with Show and Tell. Betty Dasen had a lovely pink No. 487 oval cracker tray with No. 520 etching. The Hayes had a pair of crystal square base Dolphin candlesticks, the candle caps are extended to have held hurricane chimneys at one time. Lee displayed a beautiful Diane etched ivy bowl, and Carol showed the group a No. 3500-67 6 piece relish tray with a Diane etched bottom tray. What beauties! Clara and Ray Brown were all smiles as they announced they had found another Fish Nearcut Tankard jug. That makes two now. How about five Fish tumblers to go with them. We were able to examine one, and the Fish tumblers has to be one of the most unusual, beautiful Nearcut tumblers Cambridge made. See Photos Pg. 3.

After a delicious dessert and coffee, we discussed details concerning the name tags for the Convention. The rest of the evening the gals spent cutting ribbons and making tags to go on the name badges. You will make our job with the name tags so much easier, if you send your reservations in soon. Thank you.

submitted by Phyllis Hayes

EDITOR'S NOTE: The following ad taken from House & Garden Magazine 1950. Submitted by Willard Kolb

"Cambridge Arms"



101 ways
to give your table a
"new look"

WE GET LETTERS

We have completed a seven story elderly housing project in the Hyde Park section of Cincinnati and have called it Cambridge Arms. We display enclosed in a glass case in the lobby a beautiful Cambridge Arms along with photos of the old factory and memorabilia. We are planning to begin construction on a duplicate building to be called Cambridge Arms II and will also display in the same manner another Cambridge Arms in perhaps another configuration. These displays give much to pleasure both to us and to our tenants, many of whom are very familiar with Cambridge glass.

We look forward to seeing you in June.

Tony & Norma Palazzola
Cincinnati, Ohio



"Baker" is a special kind of furniture ... designed, built and finished to please those who appreciate the finest.

Baker Furniture, Inc.
CABINET MAKERS
30 MILLING ROAD, HOLLAND, MICHIGAN

For your copy of the "Baker Guide to Good Furniture," please send 25c to Baker Furniture, Inc.

"People seldom want to walk over you until you lie down." ELMER WHEELER

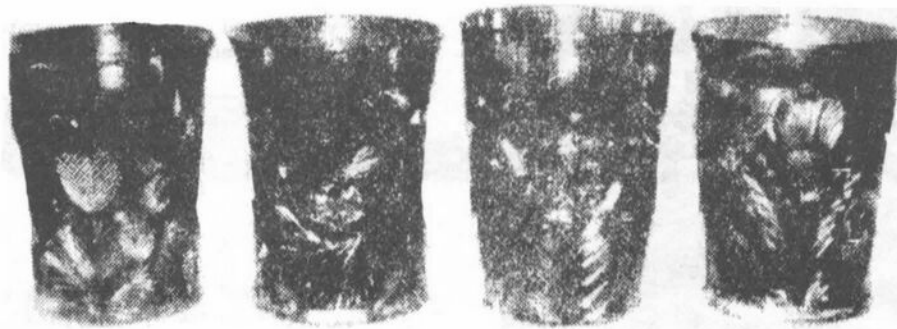


**OBTAINED A
NEW MEMBER?**

CARNIVAL GLASS TUMBLERS BY CAMBRIDGE

The Cambridge Glass Company made much more carnival glass than it was once thought a few years back. If you had a piece of everything they made, you indeed would have a fabulous and beautiful collection. I will discuss here only the five Cambridge patterns that were made in carnival glass tumblers. Cambridge also made some beautiful tumblers in colored pressed glass and in ruby stained pattern glass. Many of the "Cambridge pieces, but not all, are marked with the "NEAR CUT" mark. This "NEAR CUT" signature is found on the inside and on the base of the tumblers. But again, not all of their tumblers are so marked. It is interesting to note that the Cambridge patterns are all of the so called "inverted" or "near cut" designs. This not only applies to the tumbler patterns featured here, but to all the other carnival glass patterns that were made by Cambridge, of which I am aware.

DOUBLE STAR - I will start with the one that is the easiest to find. This pattern is sometimes called Buzz Saw, but to the tumbler or water pitcher collector it is generally known as "Double Star". The green "Double Star" tumbler is by far the most common of the Cambridge carnival glass tumblers. It is interesting to note that the tumblers are not signed in this pattern, or at least I have never seen one with the "Near Cut" mark. Some of the water pitchers are signed, however, and I have also seen some without the mark. The marigold "Double Star" tumbler is a different story, as it is quite scarce and indeed rather hard to find. I would class the purple tumbler as being very rare. It has been my experience that only occasionally do you ever see this one in the purple color. The accompanying photograph shows "Double Star" in all three colors. My purpose of showing this picture is to show you both sides of this tumbler. Note the opposite side, which is shown on the center tumbler in the photograph.



INVERTED STRAWBERRY - In this pattern the amethyst or purple is the most common tumbler, if indeed you can call any of them common. This is a very desirable pattern and I have seen them in four colors including cobalt blue. In this pattern all of the tumblers I have seen, carry the "Near Cut" mark. I have seen only a few of these in marigold and even less in green. The blue is very rare. The complete water set in any color is a prized possession. The only sour note to this otherwise magnificent tumbler is that it has been reproduced. A little study on your part, however, should make it rather easy to tell the difference. First, the new ones have that new look and are of a heavier feel when you handle them. The old tumblers definitely feel lighter when you handle them. Another distinctive difference, and in my opinion an important one, is that the leaves and strawberries on the new tumblers are cut or pressed much deeper than they are on the old tumblers. This fact of deeper pressing and the new look along with the heavier feel are probably the best distinguishing factors between the new and the old. Some of the first of the new inverted strawberry tumblers have the letter "B" on the outside of the tumbler just above the base and along the bottom of the tumbler. This "B" is not very distinct, however, and sometimes it is quite hard to find. You will also find some of the new ones signed "Terry Crider" on the bottom of the base. Hanson also signed some of the inverted strawberry tumblers. Some also have the "B" in the base instead of the "Near Cut" mark. The "B" is the mark for Bennett. The latter three are not confusing at all and offer no problem whatsoever. On all of the new "Inverted Strawberry" tumblers, just remember that they have that new carnival look; they are and feel quite a bit heavier; and that the leaves and berries are much deeper cut or pressed into the tumbler. If you will remember these factors, you should not be fooled by the new tumblers on the market today. Some say that the "Near-Cut" mark is neater and more distinct on the old ones. I would probably agree with this, but they are so much alike that I would not recommend this method of telling the difference, especially if you are a new collector.

INVERTED THISTLE-LATE THISTLE - This is a very fine pattern. The water pitcher and tumblers are both quite rare. This is one of Lucile's favorite tumblers in our collection. Here is one of those cases where the marigold tumbler is much harder to find than the purple one. The purple one doesn't come up for sale very often either, so if you have a purple one it is also a "goody". I have never seen this tumbler in green, even though other pieces of this pattern such as bowls are known to exist in green. It is possible that a green tumbler might show up in this pattern some day. I have seen some of these tumblers that were marked, although most of them do carry the "Near Cut" mark in the base. The Inverted Thistle tumbler rates high on everyone's list. It is not only rare, but it is also a beautiful and most desirable tumbler. Many tumbler collections are missing this pretty tumbler. The pitcher is very rare and would rate in the top twenty water pitchers in carnival glass collections.

INVERTED FEATHER - This is the most rare of the Cambridge pattern tumblers. It is known in green and amberish marigold. A purple tumbler has not been reported in this pattern, even though it is possible that few might exist. Most pieces in this pattern are very rare. The most common pieces are the little marigold sort of flared out parfait type stemmed glass and the green cracker jar. I have seen and know of only one water pitcher. It is interesting to note that the "Near Cut" mark is on the handle of this pitcher. The few tumblers I have seen, and that would be only 10 or 12, do not have the "Near Cut" mark. This is indeed a most desirable and rare tumbler and would surely rank in the top ten in most everybody's carnival glass tumbler list.

This tumbler is often confused with the Millersburg "Feather and Heart" tumbler. I have talked with a number of collectors that call the "Feather and Heart" the "Inverted Feather" tumbler. Both tumblers do carry the feather like motif, and also there is hob stars on both tumblers. The "Inverted Feather" is the third from the left in the accompanying photograph. Note that there is no hearts whatsoever on this tumbler. On the "Feather and Heart" tumbler there is a band of four hearts that are upside down along and around the bottom of the tumbler. The feathers are at the top of the tumbler whereas on the "Inverted Feather" the feathers are at the bottom of the tumbler.



NEAR CUT SOUVENIR - The above photo shows the "Near Cut Souvenir" in both the tumbler and the mug. These pieces were souvenir pieces and usually carry the name of a city in United States or Canada such as Pierre, S.D. The tumbler does not have the "Near Cut" mark as does the mug. This tumbler is not easy to come by and is quite desirable. The marigold color is rich and beautiful, and the iridescence is exceptionally nice on both the inside and out. I have never seen a water pitcher to match the tumblers to this pattern. Collecting this tumbler with different cities engraved on them could be quite interesting.

If you are interested in other carnival glass pieces and patterns that were made by Cambridge, I recommend that you read the article written by Jack Adams in the June issue of the "Carnival Pump" newsletter of the I.C.G.A. This is a fine article and has a complete listing of carnival Cambridge patterns. Jack and Mary Adams have done considerable research work on Cambridge Glass and it was through their efforts that old advertising data was found to designate such patterns as "Venetian" and "Sweetheart", once thought by some to be Millersburg, to definitely be Cambridge patterns.

John & Lucile Britt
Manhattan, KS



EDITOR'S NOTE: The following excerpts were taken from China, Glass & Lamps.

Submitted by Bill Smith

CHINA, GLASS AND LAMPS
90-36 and 91-31 January 9, 1911 Page 20

Cambridge Glass Co.

No exhibit of glass manufacturers would be complete without an exhibit of the Cambridge Glass Co. and this year is no exception. The company's temporary quarters in the Fort Pitt are replete with beautiful specimens of the factory's products, nothing but new lines being shown. They are there in such number as to attract general attention, while the general scheme of design is such as to make them notable. In the heavy imitation cut glass there are four distinct lines, while many new pieces have been added to the lines shown last year. They form an interesting exhibit as showing the wonderful improvement going on from day to day in the products of the pressed glass factories, and are sufficient in design and general workmanship to please the most careful buyer. Another new thing is the Thistle pattern, of which there is a full line. It is very rich in appearance and bears all the marks of premier of the factory. The fan-shaped Colonial is another attractive and wonderful creation from the factory, and cannot well be described because of the intricate combination which goes to make up the beauty of the line. The arch-foot design, brought out last year, has been reinforced by some of the prettiest pieces in the entire display. There is combination with the Colonial, made in vases, which appeal at once because of their sparkling beauty and exquisite design. Silver-etched novelties appear in profusion, adding luster to the display and making their presence felt as one of the chief points of attraction. There is another design in old rose and nasturtium, each very beautiful and well worthy the praise they bring from every quarter. Among the novelties may be found the large orange and grape fruit juice extractor, modeled after the Bennett lemon juice extractor, but larger, and the famous Bennett one-hole salt celler. Another element of attraction in the display is the buzz-saw cutting, modeled after the old cut glass, and one of the best things seen this year.

CHINA, GLASS AND LAMPS
91-32 January 23, 1911 Page 6

The Byesville, O., plant of the Cambridge Glass Co. resumed work after being off one day for Christmas and three days for New Years while putting up the new wind pipe and installing electric lights in the factory department. J.W. Morrow, formerly of the Crystal Glass Co., Bridgeport, O., has charge of the assorting and packing department at this place.

CHINA, GLASS AND LAMPS
91-33 March 20, 1911 Page 5

The Cambridge Glass Co.'s big tableware plant, Cambridge, O., is operating steadily with three furnaces in blast. There are about 40 shops on the payroll at the present time.

CHINA, GLASS AND LAMPS
91-40 August 14, 1911 Page 5

Holbrook in Charge at Byesville

The Byesville, O., plant of the Cambridge Glass Co. resumed on Aug. 2 after four weeks' shutdown to repair the furnace and make other improvements. The factory department is under the management of John Holbrook, of Martins Ferry, O., and his son, T. Holbrook, is night foreman. Guy Muhleman has charge of the assorting and shipping department. There are 13 shops on the roster this season.

CHINA, GLASS AND LAMPS
91-41 September 25, 1911 Page 72

The Cambridge Glass Company

The 600 persons employed by the Cambridge Glass Company not only have pleasant surroundings in which to perform the daily tasks allotted to them, but they work with the knowledge that there is no more enterprising and pushing institution in the whole glass world than the corporation by which they are employed.

The company was formed in 1902, when a new factory was built and provided with all modern improvements. Since that time the real good things necessary for the successful conduct of a glass making factory have been installed as they appeared, making the plant of the Cambridge Company one of the most modern and best in the country. In 1910 the plant of the Byesville Glass Company was acquired and operated, making at this date a capacity of 54 pots. The company makes pressed and blown ware and is especially equipped to make special molds. The various lines of pressed tableware, blown lamps, tumblers novelties and druggists' sundries are complete to the slightest detail, nothing having been overlooked by the management, which it can be truthfully said is efficient in every department. Recent improvements consist of the rebuilding of the furnace and the installation of a new oil burning system for use in lehrs and gloryholes. The furnaces are the latest type regenerative and have a modern and most efficient gas producer system complete, although the company still has its natural gas connections as an additional margin of safety. Efficiency is demanded in all the departments of the big factory, and errors are not overlooked, with the result that the company's products are ranking higher than ever in the eyes of the trade.

The officers of the company are: President, Arthur J. Bennett; secretary, W.C. McCartney; treasurer, G. Roy Boyd. Mr. Bennett is among the very best glass makers in the country. He knows the industry from the beginning to the end, and has brought this long and valuable experience to the Cambridge Company with the sole view of making it not only a prosperous institution, but one of which he personally is proud. He is ably assisted by the other officers and employees and enjoys the confidence of all.

CHINA, GLASS AND LAMPS
91-10 March 10, 1913 Page 6

Good Season For Pressed Glass

Pressed glass makers are congratulating themselves on the value of the orders on hand and the business that is being booked by busy salesmen every day. Among the larger corporations, such as the United States, Cambridge and McKee-Jeannette business is particularly good, while the factories with less capacity have also all they can conveniently look after. New things have stimulated trade in some instances, but the travelers are almost a unit in agreeing that the buying power of the public has reached a point where any good line can be marketed.

CHINA, GLASS AND LAMPS
91-11 April 28, 1913 Page 9

Reports from Cambridge, O., are to the effect that the Cambridge Glass Co.'s big tableware plant is in full operation with a large number of orders on the books. Prospects for a continued run are said to be roseate.

CHINA, GLASS AND LAMPS
91-12 June 2, 1913 Page 7

In New Quarters

The Cambridge Glass Co. has moved into its new quarters in New York City, and according to its custom has a handsome and attractive display. The new samples received from the factories at Cambridge and Byesville, O., are models of the art, and they are so arranged to make the show room one of the most interesting of places for seekers after good glassware in the city. And the trade the company is enjoying indicates that the seekers are finding the new quarters.

CHINA, GLASS AND LAMPS
90-17 January 8, 1910 Page 8

Cambridge Glass Co.

The Cambridge Glass Co. never misses a season without something of importance to add to the trade, and this year is no exception. In fact, there are several new things of such beauty and design as to attract more than passing notice. First comes the patented arch foot, imitation cut line with rich crystal effect. It is most complete, and reflects the light brilliantly. A vase with two handles, handsome punch bowls, fine designs of exquisite shape, orange bowl, rose bowl and cake stand, all make up a collection unsurpassed beauty and appearance. The same designs are produced in silver etched effect which is causing much comment from glass men and buyers. Another interesting feature is the one-hole-shaker. It is a patented novelty, and from the one hole in the top scatters the contents of the shaker as cheerfully as if there were a dozen. It cannot but be a good seller. Another novelty which cannot be passed is the lemon squeezer, which retains the seeds of the lemon but permits the juice to flow. The remainder of the exhibit is in keeping with the company's high grade ware.

CHINA, GLASS AND LAMPS
90-18 January 18, 1910 Page 22

The Wenzell patent egg separator is made to use in combination with the graduated Boston measuring cup. Cambridge Glass Co.
(also 90-22 January 26, 1910 Page 13)

No. 2750 design is a new Colonial, perfectly plain, correct in every detail. Cambridge Glass Company.

CHINA, GLASS AND LAMPS
90-32 December 5, 1910 Page 7

At the Cambridge Glass Co.'s Plant

The Cambridge Glass Co. are operating their 12-pot furnace at Byesville, O., with eleven shops on the payroll. A fine grade of glass is being turned into a general line of pressed goods. Quite a number of repairs have been made recently at this plant. Electricity has been installed and material is on the ground for a new wind pipe which will in all probability be installed within a week or ten days.

At the company's big Cambridge plant President A.J. Bennett reports all the business they can take care of. Among the special trade winners of this company may be mentioned their semi-Colonial line, a very fine plain effect with small mitres and rich fine cutting on very unique and practical shapes; The Rock Crystal Scotch Thistle design, claimed to be the most perfect rock crystal design yet produced, and three other very choice rich cut patterns in an extensive variety of items and shapes that appeal to buyers.

NO. 2699 BUZZ SAW DESIGN.
MEDIUM PRESSED.

TRADE
"Nearcut"
MARK



Butter Dish and Cover.



Sugar Bowl and Cover.
Two Handles.



Spoon Holder.
Two Handles.



Cream Pitcher.



4 oz. Handled Jug
and Stopper.



Salt and Pepper
Shaker.



Molasses Can, O. K. Top.



Tall Double Handled
Celery Holder.



8 oz. Oil Bottle
and Stopper.



9 in. Vase, Flared.



9 in. Vase, Cupped.



Handled Custard.



Punch Bowl and Foot.
Height, 13 in. Dia. Bowl 13 in.



Special Nappy, No Foot.
Made in 8 and 9 in. Sizes.



8 1/2 in. Square Nappy, Extra Heavy.
No Foot.



11 1/2 in. Celery Tray.



Nappy, A Shape.



Nappy, E Shape.



Cupped Nappy, Rose
Bowl or Nut Bowl.



Footed Comport.



6 oz. Tall Cologne
Bottle and Stopper.



Nappy, C Shape.



Nappy, D Shape.



Nappy, A Shape.



6 1/2 in. Handled Olive Tray.



Large Quart Squat Jug.



Tumbler.



Cracker Jar and Cover.
Small Size.



Large Claret Jug.



Large Quart Tall Jug.
Also made in 1/2 Gal. size.

NO. 2660 "WHEAT SHEAF" DESIGN.
LIGHT PRESSED.

TRADE
"Mearcut"
MARK



Footed Jelly.



Tumbler.



Butter Dish and Cover.



Handled Sugar Bowl.



Cream Pitcher.



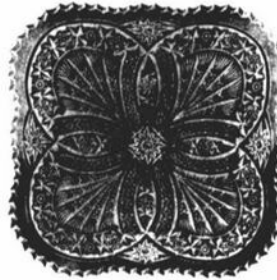
Handled Spoon Holder.



Tall Pitcher.



Tankard Jug.



Square Candy Plate.



Tall Decanter or Cologne.



Oil Bottle.



Tall Celery.



Comport, A Shape.



Punch Bowl and Foot.



Turned Up Edge Candy Plate.



Nappy, D Shape.



Footed and Handled Sherbet.



Handled Custard.



Nappy, E Shape.

Footed Bowl and Cover.



Footed Jelly and Cover.



Handled Squat Basket.



Celery Tray.



Vase, E Shape.



Nappy, A Shape.



Footed Bowl, E Shape.



Salver.



Footed Bowl, D Shape.



Vase, A Shape.

— Classified —

WANTED TO BUY: Carmen Nude Stem items. Write to: SAWDEY'S ANTIQUES, 4349 Caroline Drive, Erie, PA, 16509. Please include your phone number.

BUYING: Cambridge Rosepoint, Heisey Rose and Orchid, Fostoria etched dinnerware and Depression Glass. Also glass figures and unusual glass pieces. NADINE PANKOW, 207 S. Oakwood, Willow Springs, ILL, 60480, Phone: 312-839-5231.

WANTED: PINK CAPRICE No. 65 or No. 66 11" oval bowl, No. 133 footed bon bon. EMERALD GREEN CAPRICE No. 151 jelly. CRYSTAL CAPRICE No. 188 2 oz. tumblers. No. 178 90 oz. Doulton Jug, No. 69 7½" candle, lid for No. 165 candy. FRED LOVEJOY, 116 E. Edgebrook, No. 905, Houston, Texas 77034. Phone 713-943-2980.

Interested in a stemmed sherbet No. 3500 Gadroon pattern. Evelyn Hines, R.R. No. 2, Box 181, Alachua, Fla. 32615.

WANTED TO BUY!!! CAMBRIDGE ROSEPOINT 5 oz. ftd. tumblers (3121). Cheryl Balbert P.O. Box 5000, Chatsworth, CA 91311. (213) 998-2446.

**DON'T FORGET
JUNE 10th
CONVENTION
REGISTRATION
DEADLINE!**

**MUSEUM Telephone Number
614-432-4245**

**Thirteenth Annual
Antique Show and Sale
Heisey Glass Display**



Newark Branch - O.S.U. Campus
Country Club Drive, Newark, Ohio
Sponsored by



Heisey Collectors of America, Inc.

*Thursday, June 16th - Champagne Preview
6 - 10 P.M. - \$7.00

Friday, June 17th
12:00 Noon to 5:00 P.M.

Saturday, June 18th
12:00 Noon to 8:00 P.M.

Sunday, June 19th
12:00 Noon to 5:00 P.M.

Benefit National Heisey Museum

Over Fifty (50) Quality Dealers

Donation \$2.00 25¢ Off with Ad

* Display not open on Thursday

PH. (614) 345-2932

FLEA MARKET ON THE SQUARE

Newark, Ohio

UNDER NEW MANAGEMENT

TWO WEEKENDS

Saturday - June 11th

Saturday - June 18th

Sunday - June 12th

Sunday - June 19th

During Heisey Convention and Land of Legend Week

Managed by Newark Area Heisey Study Clubs

Space for 100 Dealers

For Contract Please Write:

Newark Square Flea Market

P.O. Box 27

Newark, OH 43055

or Call: (614) 345-2932

**BENEFIT THE NATIONAL HEISEY
GLASS MUSEUM**

DURING CONVENTION '83

visit the

DEGENHART PAPERWEIGHT & GLASS MUSEUM

*Devoted to the glass heritage
of the Ohio Valley*

**Located At
Rt. 22 & I-77; Cambridge, Ohio
Monday-Saturday 9:00-5:00
Sunday 1:00-5:00
through October.**

*Summer Exhibit:
"Make No Mistake: Is It Old Or Is It New?"
New Paperweight Gallery
Special Displays of Wheeling-Area Art Glass
& Millersburg Crystal
Two Informative Video Programs*

For year-round schedule and current newsletter, send a large SASE to P.O. Box 186, attn: Joyce Torbert, Cambridge, OH 43725. (If you desire info. on Cambridge-area antique shops and glass factories, please add an extra stamp.)

NCC members admitted for half-price (with NCC membership card) during June 12-30, 1983.

THE MAGICAL UNICORN

Rt. No. 2

New Concord, Ohio 43762
Phone (614) 826-7140

NEW SHOP LOCATION

40 E. Main St.
New Concord, Ohio 43762
Phone (614) 826-7140

R. Pt. Ball Jug	\$225
R. Pt. tumblers	\$65 ea.
R. Pt. rd. ash trays	\$45 ea.
R. Pt. 3900 V/Oil cruet	\$150
R. Pt. No. P580-8" vase	\$150
R. Pt. ring stem candles w/etched bobeches & bases.....	\$375 pr.
R. Pt. Pristine ice tub	\$150
R. Pt. Barrel tumblers.....	\$60 ea.
R. Pt. Old Fashioned	\$71 ea.
R. Pt. Honey dish w/lid	\$325
R. Pt. ftd. nut cups.....	\$75 ea.
R. Pt. Doulton Jug	\$295
R. Pt. fruit/berry dishes, 3400	\$65 ea.
Diane cocktail shaker w/chrome top	\$95
Diane ice bucket VERY RARE shape, cone like	\$150
Diane syrup w/chrome lid	\$150
Chantilly No. 1321 Dec. w/6 No. 7966 sherry glasses	\$425 set
1 Corinth candles w/Chantilly etched ruffled globes, bobeches & bases.....	\$275
Chantilly pristine ice tub w/sterling ft	\$95
Ftd. nut cups, Portia etch	\$50 ea.
Wildflower med. hat	\$175
Mt. Vernon ice bucket	\$68
Amber, 5 sec. relish, Portia.....	\$65
Ebony No. P532, 6" comport w/hand dec. Charlton gold roses	\$125
Royal Blue 6", 3400 globe vase.....	\$55
3121 Wildflower cordials	\$55 ea.
Ebony No. P300, 6" rd. candy w/cover, Gold enc. Wildflower	\$110
Crown Tuscan shell compote w/cover, hand dec. roses	\$110
Ebony dec. flip bowl w/No. 739 etch.....	\$55
Peach Blo No. 193, 6 oz. oil w/stopper	\$40

***Will Hold Until Show Time With Deposit
Shipping Extra.***

FIESTA FENTON PADEN CITY ART GLASS

HEISEY FOSTORIA CAMBRIDGE TIFFIN DEPRESSION GLASS HALL IMPERIAL MORGANTOWN

"UP TO PARR"
PROMOTIONS
PRESENTS

THE
FIRST SAN FRANCISCO

ALL ANTIQUE & COLLECTABLE
With Elegant Glassware from the Depression Era

**GLASS
CHINA & POTTERY
SHOW & SALE**

Sat October 22, 1983 10am-6pm
Sun October 23, 1983 10am-5pm

COME TO THE CITY & ENJOY
AT
THE HALL OF FLOWERS
GALLERY

9TH AVE & LINCOLN WAY
INSIDE GOLDEN GATE PARK
(Out of State Dealers Exhibiting)

Admission \$2.50

For Information Contact
"UP TO PARR"
592 Guerrero Street
San Francisco, Ca. 94110
(415) 552-9337

REFERENCE BOOKS AND A WHOLE LOT MORE

TIFFANY CARNIVAL DRESDEN MIESSEN WEDGEWOOD CRYSTAL BAUER NEW MATINSVILLE

STAGE COACH ANTIQUE MALL

(formerly White Pillars Antiques)

7525 East Pike
Norwich, OH 43767
614/872-3720

MANY DEALERS. . .

PLENTY OF PARKING. . .

WIDE SELECTION OF GLASS
AND POTTERY
FURNITURE AND
GENERAL LINE!

BUY and SELL

OPEN YEAR ROUND
Weekdays - 10 AM - 5:30 PM
Sunday - 12 noon - 5:30 PM
Summer Evening Hours - by Chance!

Located 9 miles E. of Zanesville, OH, on I-70 to Nor-
wich Exit No. 164 - then 1/2 mile W. on Route 40.

**COLUMBUS, OHIO
ANTIQUA FLEA MARKET**

Ohio State Fairgrounds - Lausche Building
Off I-71 Exit 17th Avenue - Columbus, Ohio

JUNE 26

Sunday Only - 7 A.M. to 4 P.M.
Show Admission \$1.00 - Under 12 Free
150 QUALITY DEALERS

SELLING: Advertising Art Deco, books, Cambridge, clocks, coins, collec-
tibles, Depression glass, dolls, Fiesta, fine early furniture, Heisey, jewelry,
lamps, oak furniture, post cards, pottery, good primitives, tools and print
shop items.

STOCKWELL PROMOTIONS

4214 North High Street
Columbus, Ohio 43214
(614) 267-8163/263-6830/885-2352

NEXT SHOWS:

Racetrack Sept. 18th, Oct. 2nd, Nov. 20th, Dec. 11th

DEALERS DIRECTORY

**When Writing To
Dealers Please
Include SASE**

DEL'S DOING
10327 Main, Box 188
Richmond, Ill. 60071
Daily 10-5 815-678-4219
Cambridge - Heisey - Furniture - Jewelry

CHARLES MIKULIK
Box 416
Elizabeth, N.J. 07207
— COLLECTOR —
Always paying good prices for
CAMBRIDGE CAPRICE
in all colors
201-372-1101
CARRY MOST TYPES OF ANTIQUES

EVELYN M. ALLEN
135 Cynthia Street
Heath, Ohio 43055
Mail Order & Shows 614-522-1635
SPECIALIZING IN CAMBRIDGE GLASS!

BENICIA ANTIQUE SHOP
305 First Street
Benicia, California 94510
OPEN 11 AM - 5 PM
Closed Monday
Z. E. LOPES 707-745-0978

ROLLING ACRES ANTIQUES
501 S. 9th St.
Cambridge, Ohio 43725
Sandy Jenkins & Anne Ingram
614-432-2570
CAMBRIDGE & GENERAL LINE ANTIQUES

DAVID NIELSEN
109 Lincolnway
LaPorte, Indiana
219-326-7276
CAMBRIDGE - HEISEY - GENERAL LINE

VISIT HISTORIC BENICIA
and its 28 shops
Off Interstate #80
..... North of San Francisco

BERKELEY ANTIQUES
69 Berkeley St.
Boston, MA 02116
George or Frank 617-426-1048
CAMBRIDGE, HEISEY, GENERAL LINE

ANDREJCAK'S ANTIQUES
14533 Bayes Ave.
Lakewood, Ohio 44107
Joe & Karen Andrejcek 216-226-3417
SHOWS ONLY — CAMBRIDGE — FENTON — CHINA

A. SPRINGBORN
5434 Windridge Lane
Orlando, Florida 32810
SHOP No. 34 — WEBSTER, FL
Open Every Monday 305/298-3011

D & D ANTIQUES
Columbus, Ohio
DICK SLIFKO **SHOWS ONLY**

THE HITCHING POST
7467 S. R. 88
Ravenna, OH 44266
Ph. 216-296-3686 D. McDaniel
CAMBRIDGE — HEISEY — GENERAL LINE

FINDER'S KEEPER'S ANTIQUES
P.O. Box 303 P.O. Box 16023
Dayton, O. Columbus, O.
45401 43216
513-254-2937 614-885-2726
SPECIALIZING IN CAMBRIDGE GLASS!

THE GLASS CUPBOARD
39 Shire Oaks Drive
Pittsford, New York 14534
Marcia Ellis 716-586-7596
CAMBRIDGE ONLY INQUIRIES INVITED

GEORGE HOFFMAN ANTIQUES
129 South 4th Street
Newark, Ohio 43055
614-345-8021

SNYDER ANTIQUES
P.O. Box 010
Gates Mills, Ohio 44040
SPECIALIZING IN CAMBRIDGE GLASS
Mail Order, Shows 216-461-2110 By Appointment

JOHN PARR ROBERT PARR
"UP TO PARR"
Stoves, Depression Glass, Fostoria
Cambridge, Heisey, Rugs, Antiques
Art Deco, Fiesta, Collectibles
Tues - Sat 2-7 p.m.
(415) 552-9337 592 GUERRERO ST.
SHOP & RESIDENCE SAN FRANCISCO, CA 94110

J & L GLASS
Laws Antique Center, Manassas, VA 22111
and 10629 Main St. Fairfax, VA 22030
703/273-8579
**BUY & SELL: Depression, Cambridge, Heisey,
Duncan & Fostoria Glass**

1886 HOUSE
East Schodack, N.Y. 12063
MAIL and SHOWS
Laurie Cruise 518-477-5895
CAMBRIDGE - NORITAKE - AZALEA - D.G.

joyce's antiques
Bought and Sold
Specializing in HEISEY • CAMBRIDGE •
VERLYS • AMERICAN GLASS
P O Box 114, Albertson, N Y 11507
(516) 499-3396

THE ANTIQUERY
42 E. Main St., St. Rt. 40
New Concord, Ohio 43762
Ph. 614-432-4483 Richard Bennett
Specializing in Cambridge Glass

BILL & SHARON PHILLIPS
21730 Priddy
Euclid, Ohio 44123
Ph. 216-261-4665 Shows Only
BUYING GLASS, ANTIQUES, ETC.

THE MAGICAL UNICORN
40 E. Main St.
New Concord, Ohio 43762
Ph. 614-826-7140 Yvonne Gordon
Open 11-5 Weekdays
* Anytime, Chance or Appointment

AL STEELE
Westerville, Ohio
614-882-6483 or 614-882-7124
Mail Orders and Shows Only
HEISEY — CAMBRIDGE — PATTERN GLASS

BETTY'S ICE HOUSE ANTIQUES
517 Fulton Street
Wausau, Wisconsin 54401
Quality Antiques
Cambridge - Heisey - General Line
Betty R. Puestow Hours 1-5 Daily
715-848-7145 or by appointment

MARGARET LANE ANTIQUES
2 E. Main St., New Concord, OH 43762
Lynn Welker 614/826-4418
CAMBRIDGE GLASS MATCHING SERVICE
Hours Mon.-Fri. 1-5 PM or by Appointment

SHIRLEY S. LADOUCEUR
Antiques and Collectibles
Specializing in Cambridge Glass
BY APPOINTMENT 7597 Daphne Drive
315-458-5297 No. Syracuse, NY 13212

GREEN ACRES FARM
Antiques, Crystal Glass & Collectibles
Sat. & Sun. 1-7 PM (614) 927-1882
2678 Hazelton Etna Road
(State Route 310 North)
Pataskala, Ohio 43062



ANTIQUÉ SHOW & SALE

(& 10th Annual NCC Convention)

SHENANDOAH INN
 INTERSTATE 70 .. EXIT 186 .. 7 MILES EAST OF
 CAMBRIDGE OHIO

JUNE 24, 25, 26, 1983

HOURS	
FRIDAY, JUNE 24th	6:00-9:00
(PREVIEW ADMISSION \$3.50)	
SATURDAY, JUNE 25th	11:00-6:00
SUNDAY, JUNE 26th	12:00-6:00
(ADMISSION \$1.75)	

OFFERING CAMBRIDGE AND OTHER FINE GLASSWARE
 ALONG WITH GENERALTY OF ANTIQUES
 FOOD DOOR PRIZES PARKING

1983 NCC CONVENTION & ANTIQUE SHOW & SALE

June 24th, 25th, 26th

THE SHENANDOAH INN

P.O. Box 147, Old Washington, Ohio 43768
 I-70, Exit 186 — 7 Miles E. Of Cambridge
 Phone 614-489-5511

Mention NCC When Making Reservations

National Cambridge Collectors, Inc.
 P. O. Box 416
 Cambridge, Ohio 43725

FIRST-CLASS MAIL
 U.S. POSTAGE
PAID
 Cambridge Ohio
 43725
 Permit No. 1

FIRST CLASS MAIL