

Cambridge



Crystal Ball

ISSUE NO. 138

OCTOBER 1984

Published monthly by the NATIONAL CAMBRIDGE COLLECTORS, Inc.
To encourage and to report the discovery of the elegant and boundless product
of the Cambridge Glass Company, Cambridge, Ohio

THOUGHTS FROM YOUR PRESIDENT

I have another question to ask this month. They say that when you reach the age of fifty that you start going downhill slowly. Is this in reference to your health? Does this mean that your body slowly degenerates? Is this what slows us down so that we don't accomplish quite as much as we did when we were 49?

I'll admit that I am probably a quarter of an inch shorter than I was when I was twenty and quite a few inches rounder . . . but with experience you gain through age, you should be able to compensate for the slowing down and get just as much done in a given period of time. Does anyone find that it works this way for them? I don't!

Now, I'll tell you what I think the real problem is. Once you reach fifty, someone, somehow, is taking a few hours a day off you. It's no longer a 24 hour day, it's a 20 hour day; it's no longer a 7 day week, it's a 6 day week; it's no longer a 30 day month, it's a 26 day month and; it's no longer a 12 month year, it's a ten month year! Now you can believe the theory about slowing down after fifty if you want to, but I think mine makes more sense. Anyway, what this all comes down to is that I haven't gotten all my clutter moved to the basement yet . . . what with these 26 day months I have now!!!

MEMBERSHIP RENEWAL NOTICE

If the date on your
address label is..

10 - 84

This is your LAST ISSUE of the CRYSTAL BALL.
Please renew NOW!

The NOVEMBER QUARTERLY MEETING will be held in the downstairs banquet room at the Elks Club in Cambridge, Ohio, on Saturday, November 10th. The Elks Club is located on the S.W. corner of Wheeling Avenue (the main thoroughfare) and 11th Street. We will have a Buffet dinner (choice of chicken or roast beef) with all the trimmings and a salad bar. There will also be a Pay Bar for the Cocktail Hour which will begin at 6 p.m. Dinner will be at 7 p.m. Quarterly Meeting will start at approximately 8 p.m. Frank Wollenhaupt and Lynn Welker will present a Program on Cambridge Reproductions." PLEASE get your reservations (see form on page 16) in early. Deadline for dinner reservations will be November 3rd. Reservations are not necessary if you are attending the Quarterly meeting only.

The Imperial story is still in limbo. In short, last week they were denied another extension and were placed in Chapter VII bankruptcy. The assets are to be liquidated. As of right now, the Citizens Committee of Bellaire and Viking Glass are working together to purchase the plant and keep it in operation. The big stumbling block . . . Lenox has apparently reinstated it's original request of \$2.6 million, as the only secured creditor; as opposed to the \$470,000 they had agreed to settle for with Stahl. Hopefully they can negotiate with Lenox and keep the plant running.

The idea of us being able to purchase the moulds, through liquidation, if the Committee and Viking cannot reach an agreement with

continued on page 2

CAMBRIDGE CRYSTAL BALL

Official publication of National Cambridge Collectors, Inc., a non-profit corporation with tax exempt status. Published once a month for the benefit of its members.

Membership is available for individual members at \$13 per year and additional members (12 years of age and residing in the household) at \$3 each. All members have voting rights, but only one *Crystal Ball* will be mailed per household.

Back issues of the *Crystal Ball* are available (beginning with Issue No. 1, May 1973) for members only. Cost \$.60 each or 12 issues for \$7.

1984-85 OFFICERS & COMMITTEE CHAIRPERSONS

PRESIDENT Willard P. Kolb
 VICE-PRESIDENT David B. Rankin
 SECRETARY Janice Y. Hughes
 TREASURER William C. Smith
 SERGEANT-AT-ARMS Marybelle Moorehead
 BUDGET & FINANCE David B. Rankin
 BY-LAWS David B. Rankin
 CONVENTION David B. Rankin
 MEMBERSHIP Phyllis D. Smith
 MUSEUM Billy Harbaugh
 PROGRAM & ENTERTAINMENT ... Frank Wollenhaupt
 PROJECT Willard P. Kolb
 PUBLIC RELATIONS William C. Smith
 PUBLICITY Joseph Andrejeak
 STUDY GROUP ADVISOR Evelyn M. Allen
 1985 AUCTION Lynn M. Welker
 1985 ANTIQUE SHOW Joy McFadden
 1985 FLEA MARKET Larry F. Hughes
 CRYSTAL BALL EDITOR Phyllis D. Smith

CLASSIFIED ADVERTISING RATES

5c per word \$1.00 minimum
 We cannot mix type size in classified advertisements. Abbreviations and initials will count as words. Payment in full MUST accompany all ads.

DISPLAY ADVERTISING RATES

(camera ready ads preferred)

	Members	Non-Members
1 8 page (9 items)	\$4.00	\$6.00
1 4 Page (20 items)	7.00	10.00
1 2 page (20 items)	12.00	18.00
3 4 page	17.00	25.00
Full page (50 items)	22.00	33.00

DEALERS DIRECTORY

5 line maximum \$12.00 for 12 months
 Cambridge *Crystal Ball* assumes no responsibility for items advertised and will not be responsible for error in price, description or other information.

Advertising copy, articles, club news and notices must be in our hands by the 10th of each month to assure publication in our next issue. Advertisements containing reproductions will not knowingly be accepted unless clearly stated.

Opinions or information stated in any signed article or letter printed in the *Crystal Ball* are those of the authors and may or may not agree with National Cambridge Collectors, Inc. The Editor reserves the right to refuse and to edit any material submitted for publication so as to conform with the editorial style of the *Crystal Ball*.

PLEASE ADDRESS ALL CORRESPONDENCE TO

National Cambridge Collectors, Inc.
 P.O. Box 416 Cambridge, Ohio 43725

PRESIDENT: Willard Kolb 614/695-0695
SECRETARY: Janice Hughes ... 614/432-7823
EDITOR: Phyllis Smith 513/323-3888

NCC MUSEUM of Cambridge Glass is located on U.S. Route 40, 1/8 mile east of I-77 near Cambridge. Hours: 12 noon to 4 PM - Wednesday thru Sunday. (March thru November)

PLEASE NOTIFY US IMMEDIATELY OF ANY CHANGE IN YOUR ADDRESS

Please enclose a SASE when requesting information

THOUGHTS continued from page 1

Lenox is very nearly out of the question anyway, for various reasons. The main reason not being the money aspect of it. It was therefore decided at the August Quarterly meeting, and passed by unanimous vote, that we would not pursue the pledge idea at this time. (NOTE: I made the statement to several people approximately two years ago that a new tango was going to be danced at Imperial, and if you couldn't learn the step in a hurry, you'd better get off the dance floor. There are now a lot of people who have found that the tops of their shoes, especially the toe area, have worn through while the shoe soles are hardly scuffed.)

The new Color Book has been very successful. So successful, in fact, that the first reprint, along with a new price guide, will probably occur before the first of the year. I would like to commend the book committee for bringing us such a successful book. It takes many hours of hard patient work to assemble a book such as this. Thank you, and thanks to everyone who assisted the committee in it's production.

WILLARD

CAMBRIDGE GLASS COLLECTORS SHOW GOOD TASTE!

The above headline is true not only when describing Cambridge glass collectors and their taste in GLASS, but it is also true when describing their taste in FOOD! When it comes to picnic "fixin's" they would be hard to beat.

August 19th was a beautiful day as far as the weather was concerned, and it was also a very enjoyable day for those of us who attended the NCC Quarterly Meeting held at the NCC MUSEUM.

Those who have worked so very hard this spring and summer in preparing the MUSEUM grounds are to be commended for all their time, effort, and sore muscles! Their hard work was much appreciated by those in attendance as we enjoyed our meeting in such lovely surroundings. Many "Thanks" to all concerned!

To those of you who were unable to attend, you missed a very nice time. You can read the details in the Club Minutes beginning on page 6.

CAMBRIDGE JUGS

PART II

by MARK NYE

We start this month with a mystery jug or, at the very least, one that poses questions . . . the #3078 84 oz. ice lipped jug.

It is as #3078 this jug appears in the 1940 catalog and price list and, under the same designation, it appeared in the 1933 Cambridge catalog supplement. However, in 1930 and 1931 what appears to be the same jug was being listed as a part of the #3145 line. Is there a difference between the #3078 and #3145 84 oz. jugs? I doubt it, but if any readers have evidence to the contrary, I certainly would like to hear from them.

While it is doubtful this particular jug would have been decorated, due to the optical nature of its pattern, it may have been produced in most of the 1930s colors. The 1940s saw the jug as #3078 being made in crystal, amber, forest green, royal blue and amethyst.

A #1206 Spiral Optic 12 oz. footed tumbler was shown in the 1933 catalog supplement and thus indicates that perhaps the #1206 76 oz. Twisted Optic ice lipped jug also dates to the 1930s. If this is the case, then you might find the jug in the 1930s colors in addition to the ones being used in 1940, namely crystal, amber, moonlight, forest green, royal blue and amethyst. Again, due to the pattern, it is highly unlikely this jug was ever decorated.

The next two jugs, #956 and #935, are identical except that #956 has an ice lip while #935 does not. Both have a capacity of 64 oz. and probably both were first made in the 1920s. The Welkers, in their Book I of Catalog Reprints, have reprinted a catalog page most likely dating to the late 1920s that shows the #956 jug etched Martha. No illustration of the #956 jug was found in the 1930-34 NCC Catalog Reprint, but this does not rule out its production during that time period. 1940 saw the #956 jug being made in crystal, amber, dianthus and moonlight, undecorated only. Thus, if production did not occur during the 1930s, the jug was reintroduced in 1940.

in the 1930-34 Cambridge catalog: twice in the original 1930 catalog and both times etched #739; and three times in the 1931 supplement, etched Apple Blossom, Lorna and lastly in ebony with silver encrusted Lorna or D/973-S. There is every reason to believe this jug was produced in the prevailing colors of the 1930s and, colored as well as crystal blanks would have been etched. By 1940 production of the #935 jug was limited to crystal with no decoration of any type being applied.

While limited to production in crystal during 1940 and after, the Tally-Ho #1402/50 74 oz. Tankard style jug was made in royal blue, amber, carmen and possibly other colors during the 1930s. The #1402/50 tankard has been seen with a silver overlay decoration. It is possible it was decorated in other ways, including etched, during the mid to late 1930s.

The Tally-Ho tankard jug took its basic shape from our next jug, the #96 tankard pitcher. This jug dates at least to 1933 and probably much earlier. The 1940 catalog presented five sizes of the #96 jug: 18, 32, 40, 59 and 60 oz., all in crystal, and none were available decorated. These same sizes were also available in 1933 and at that time were being offered thru a special Cambridge catalog supplement, "Beer and Bar Glassware."

Dating back to the 1920s is the #103, 2-pc. Guest Set, and our next jug. Again, we have a bit of a mystery. In the Welker Book I of Catalog Reprints we find this set on two pages that appear to have originated from the same Near Cut era catalog. Yet, on one page we find the set as #103 38 oz. Guest Room Jug and Tumbler, etched Martha. On the other page it is captioned as the #62 Guest Room Set, etched Wedgewood. On a third page showing the Marjorie etching, a jug very similar in style to the two just described is shown and listed as the #103. (This page was reprinted in the CRYSTAL BALL, Issue #74, in conjunction with the article dealing with Marjorie.) Are the #62 and #103 sets the same, or are they different? If the same, why the two numbers in the same catalog? Regardless of how the set was designated, it is

*The #935 jug was pictured at least five times

continued on page 5



JUGS



3078 - 84 oz. Ice Lipped



1206 - 76 oz. Twisted Optic Ice Lipped



956 - 64 oz. Ice Lipped



935 - 64 oz.



1402/50 - 74 oz. Tankard



103 - 2 pc. Guest Set



3077 - 22 oz. w Cover
3077 - 22 oz. without Cover



96 - 59 oz. Tankard
also made
69 oz., 40 oz., 32 oz., 18 oz.



30 - 80 oz. M. Wash.

JANUARY 1, 1940

CAMBRIDGE JUGS . . . continued from page 3

highly probable it was the recipient of other decorations during the 1920s.

The 1930-34 Cambridge catalog, as reprinted by NCC, contains no illustrations of the #103 Guest Room Set. The next known reference to the set is a catalog page that appears to be from the mid to late 1930s and reprinted by the Welkers in their Book II of Catalog Reprints. Here it is referred to as a 2-pc. Nite Set and was captioned as being available in crystal, plain or etched, and in the colors of amber and royal blue, plain only. One only wishes the catalog page had stated what etchings were available on this piece.

The 1940 Cambridge catalog and price list called this set the #103 Guest Set. At that time, it was only being made in crystal and was available plain, or etched Diane, Portia, Elaine, Rosepoint and Wildflower.

The only one of the nine jugs covered in this article "Cambridge Jugs - Part II," to survive the 1940s, this #103 2-pc. set was illustrated on a catalog page issued during late 1949 or early 1950. According to the September 1950 price list, the set was available at that time etched Candlelight, Chantilly, Diane, Elaine, Portia, Rosepoint and Wildflower. In February 1953, the set was being offered with these same etchings, with the exceptions of Portia and Candlelight, both of which had been discontinued by that time. A general price list issued in the fall of 1953 failed to include the #103 jug set, nor did it reappear during the reopen period.

With another style handle and a different knob on the lid, the #3077 22 oz. jug and cover is shown in the 1931 Cambridge catalog supplement. Once as a part of a 4-pc. Boudoir Set and again by itself, this time etched Cleo. The 1932 catalog supplement illustrated the jug with two different styles of handle. One, a ribbed slightly twisted handle is on a jug with cover shown etched #760. The other is like the one pictured on the page from the 1940s catalog that is included with this article.

In the 1932 catalog supplement, the #3077 jug was shown Rock Crystal Engraved with engraving #650. The same catalog supplement was again presenting the jug and cover in a

4-pc. Boudoir Set, this time on a page headed "Cambridge Two Tone Quick Sellers." The body of the jug and the tumbler as illustrated, is dark, indicating possibly royal blue or amethyst. The tray, jug handle and lid appear to be in crystal.

The 1940 version of the #3077 jug was available with or without the lid. The lid had a solid knob opposed to the open circlet of glass used during the early 1930s. 1940 production of the #3077 jug was in the colors of crystal, amber, emerald (light), dianthus, moonlight, forest green, royal blue and amethyst. From the 1930s you may find this jug in gold krystal and perhaps in other colors from those years as well.

The Martha Washington #30 80 oz. jug is a part of a line that dates back to the late 1920s and with several name changes appeared in Cambridge catalogs from then until the final plant closing. The story of this line is far too long to cover here and the reader is referred to the November 1975 issue of the CRYSTAL BALL.

Over the years, the pattern was produced in most of the Cambridge transparent colors, but whether the jug was made in all, I can't say. By 1940, the line, including the #30 jug was being made in crystal only. While the line did reappear in the 1950s as Heirloom, the #30 jug was not made after the 1940s. It was being made in the early to mid-1930s and it is entirely possible you may find this jug decorated with a Grape etching since other pieces in the Martha Washington pattern were etched thusly during that time period.

In Part I, I said there were a total of 39 jugs being made in 1940. Disregarding decorations, if a collector just wanted each jug in every color it came in during 1940, how many jugs would have to be found? The answer will be provided in the final article in this series. Meanwhile, start looking . . . you have a lot of jugs to find!

to be continued

QUARTERLY MEETING

NOVEMBER 10, 1984

see page 16 for details

Club News

National Cambridge Collectors, Inc.
Quarterly Meeting
August 19, 1984
NCC MUSEUM, Cambridge, OH

The meeting was called to order at 1:35 p.m. by President Kolb. In attendance were six Board members and thirty members and guests.

The minutes of the previous meeting held on June 24, 1984 were read by Secretary Janice Hughes, and approved.

Treasurer Bill Smith reported the profit from the Flea Market, Antique Show and Convention was \$3,314.

COMMITTEE REPORTS

BY-LAWS: No report.

CONVENTION: President Kolb announced the officers for the coming year are as follows: President - Willard Kolb; Vice-President - David Rankin; Secretary - Janice Hughes; and Treasurer - Bill Smith. New Convention Chairman Dave Rankin reported plans are being made and would welcome suggestions on any changes or new ideas.

CRYSTAL BALL: Editor Phyllis Smith reported the Dealers Directory ads will be available only on an annual basis. She asked if anyone objected to the CRYSTAL BALL being sent open or if it should be folded?

MEMBERSHIP: Chairman Phyllis Smith reported we now have 1,232 members.

PROJECT: Chairman Willard Kolb reported the amethyst cup plate and all the others are for sale in the MUSEUM. Bill Smith reported that Pairpoint is raising the cup plate 6% but NCC will not change the selling price.

BUDGET & FINANCE: No report.

MUSEUM: No report.

COLOR BOOK: Bill Smith reported sales are good. Various reports have been received on the Price Guide. The publisher has stated the book will have to be reprinted before the end of the year so a new Price Guide will be completed by that time.

FLEA MARKET: No report.

PUBLIC RELATIONS: Bill Smith reported they have been to Houston, Texas (NDGA Convention) and the Glass Bash in Columbus, Ohio, with good results in sales and membership. They will be attending the California Redlands Historical Glass Museum event in October and the Gateway Depression Glass Show in St. Charles, Missouri in November. He also reported on the joint meeting of all the glass clubs to be held in October.

ACQUISITIONS: President Kolb reported he has appointed an Acquisitions Committee consisting of: Evelyn Allen, Bill Smith, Lynn Welker, Frank Wollenhaupt and Joy McFadden. Bill Smith reported \$2,000 has been allocated to the committee for the next year to purchase desirable items for the MUSEUM. He reported four sample stems have recently been purchased: one, an unusual goblet with three little rams heads on the stem; and a heavy pressed Caprice goblet in topaz. In March, several ledgers of factory invoices, employee records from 1905 thru 1917, and other paper products were purchased. President Kolb stated anyone can donate money direct to the committee for purchase of glass.

OLD BUSINESS: President Kolb reported on the situation at Imperial. He stated moulds have been sold and it is doubtful if there will ever be a liquidation. A motion was made by Sue Rankin to wait for future events before sending out the pledge letters. Motion carried.

NEW BUSINESS: President Kolb stated the date for the November Quarterly meeting and dinner will be announced after other locations have been checked.

The need for a hand mower and weed eater for the MUSEUM was

discussed. A motion was made by Dean Westfall to authorize Larry Hughes permission to spend up to \$500 for a gasoline weed eater and mower. Motion carried.

President Kolb reported the final inspection will be made on the MUSEUM after three lighted exit signs have been installed. These have been purchased and will be installed soon.

"Show & Tell" was presented by Bill Smith. A motion was made by Dave Rankin to adjourn at 2:35 p.m.

Janice Hughes, Secretary

Study Club News

STUDY GROUP #5 - SOUTHERN CALIFORNIA "CALIFORNIA CAMBRIDGE COLLECTORS"

The California Cambridge Collectors held their meeting August 19th in the home of Beverley Hanson. There were five members present. Since so few members attended this meeting, we did not study any particular Cambridge item. We did discuss our plans for the holiday dinner and gift exchange. Bill Losch will make arrangements for dinner on December 1st at the same restaurant as last year. The raffle prize this month was the new Cambridge Color book. Everyone was impressed with the quality of the book and the photography. Thank you Bill and Betty Losch for a wonderful raffle prize.

"Show & Tell" items included: A green Weatherford candy jar, crystal Mount Vernon ashtray, moonlight blue Everglade double candlesticks and a frosted and cut crystal Cambridge sign (which was beautiful), were all shared by Bill and Betty Losch. Beverley Hanson had purchased a lovely covered syrup pitcher and underplate while on her trip back east. We weren't sure who had made it until we looked through the new color book and there it was in the Mulberry section. Beverley's is the same color. Jim and Joan McDowell shared a pair of crystal Scotty bookends.

Our next meeting will be held at Bill and Betty's. Bill will attempt to order another slide presentation.

submitted by Joan McDowell

STUDY GROUP #8 - SOUTHERN MICHIGAN "THE MICHIGAN CAPRICES" Phone: 313/655-4703

On September 7th, the Michigan Caprices met at the home of Frank and Phyllis Hayes. Betty and Bob Dasein invited their friends Frank and Vivian Pringle to join us in a study of Coral and Crown Tuscan. The group had contributed several items from their collections so that we had an excellent example of the color variation. It also makes you realize why so many of us are hooked on it. We all agreed the 14" Charleton decorated torte plate belonging to Ray and Clara Brown was the most beautiful item present.

Lee Coppo had several articles from the Daily Jeffersonian on the Convention to contribute to the group's album, which we appreciated. We continued more discussion of Cambridge glass and the upcoming Depression Glass Show in October over dessert and coffee. Anyone wishing to join or visit our Study Group, please phone me at the number shown above.

submitted by Phyllis Hayes

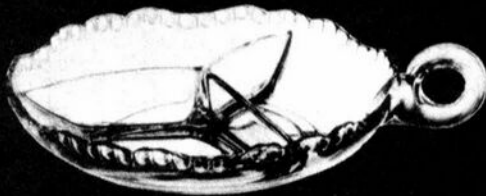
STUDY GROUP #10 - LONG ISLAND, NY "THE TUSCAN CROWNS" Phone: Charles or Loretta at 516/589-9168

Our August meeting was held at the home of Charlie and Loretta Weeks. The main topic of discussion was our upcoming 1st All-Glass Show & Sale sponsored by the Tuscan Crowns Study Group to be held Thanksgiving weekend, November 23, 24, 25. Anyone wishing information about our Show may contact R. Serzanin at 516/273-5084.

"Show & Tell" items consisted of a Nude royal blue banquet goblet, Nude moonlight (or is it willow?) ashtray, and a crystal cocktail shaker with Chantilly etching. Our next meeting is scheduled to be held at Arnie and Marion Callesano's, sometime in September.

submitted by Rita Berg

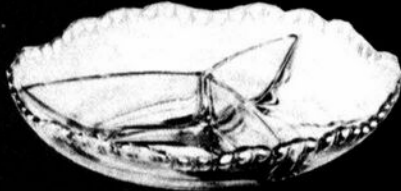
continued on page 11



3500/61
6½ in. Relish
1 Hdl. 3 Compt.
\$11.00 Doz.



3500/70
7½ in. Relish
No Hdl. 4 Compt.
\$12.40 Doz.



3500/69
6½ in. Relish
No Hdl. 3 Compt.
\$8.25 Doz.



3500/60
5½ in. Relish
1 Hdl. 2 Compt.
\$8.25 Doz.



3500/49
5 in. 1 Hdl. Nappy
\$6.90 Doz.



3500/68
5½ in. Relish
No Hdl. 2 Compt.
\$6.60 Doz.



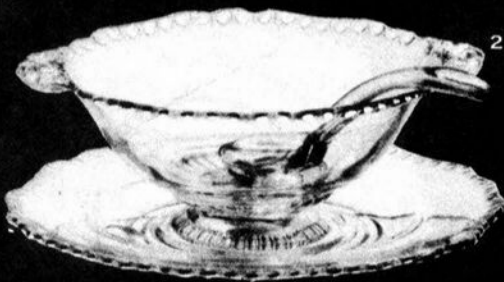
3500/78
6 in. Candy Box & Cover
\$16.50 Doz.



3500/54
6½ in. 2 Hdl. Low Cornport
\$8.25 Doz.



3500/47
2 Hdl. Candy Dish or Cornport
\$7.90 Doz.



3500/59
3 Pc. Mayonnaise Set
Bowl, Ladle and Plate
\$19.70 Doz.



3500/55
6 in. 2 Hdl. Square Basket
\$8.25 Doz.



3500/77—4½ in. Candy Box & Cover
\$8.80 Doz.

The prices shown are list prices subject to your usual discounts.



THE CAMBRIDGE GLASS COMPANY



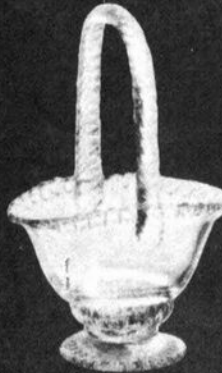
3500/14
Sugar & Cream
\$12.00 Doz. Prs.



3500/15
Sugar & Cream
Indiv. (Doz. Prs.) \$8.25



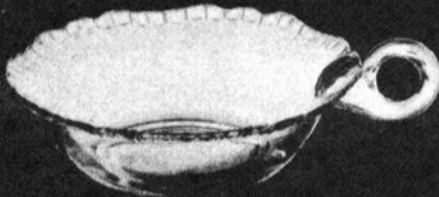
3500/1
Cup & Saucer
\$7.90 Doz.



3500/79
3 in. Favor Basket
\$4.00 Doz.



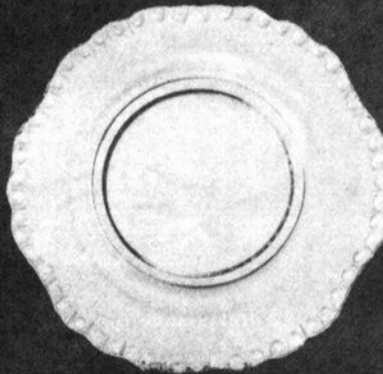
3500/10—5 in. Fruit Saucer
\$4.15 Doz.



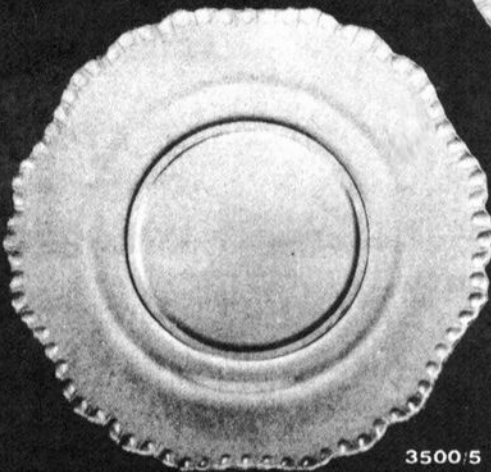
3500/50—6 in. 1 Hdl. Nappy
\$8.25 Doz.



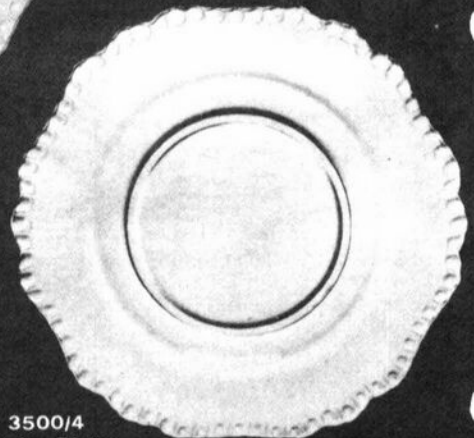
3500/11—6 in. Cereal
\$6.00 Doz.



3500/3
6 in. B. & B. Plate
\$4.60 Doz.

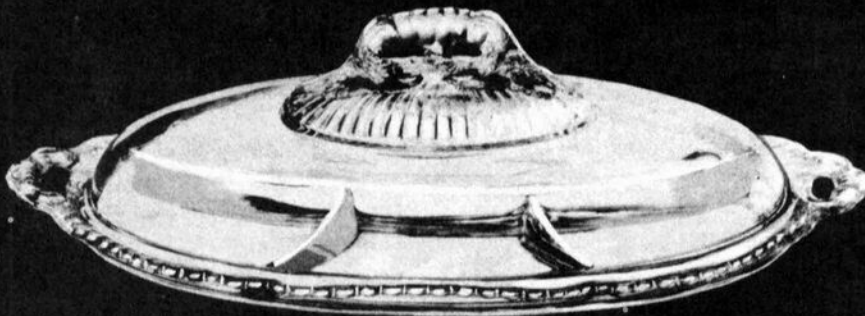


3500/5
8½ in. Salad Plate
\$8.70 Doz.



3500/4
7½ in. Plate
\$6.20 Doz.

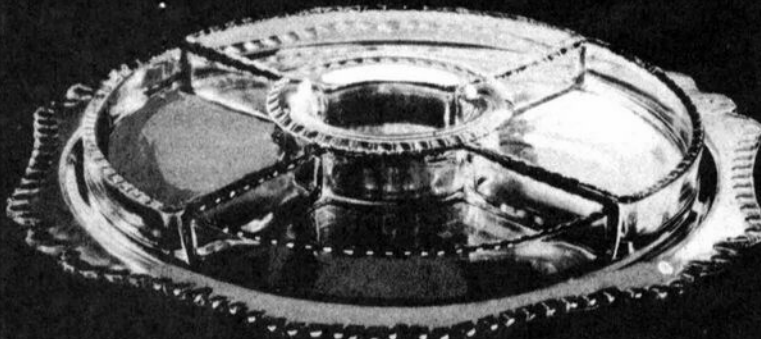
The prices shown are list prices subject to your usual discounts.



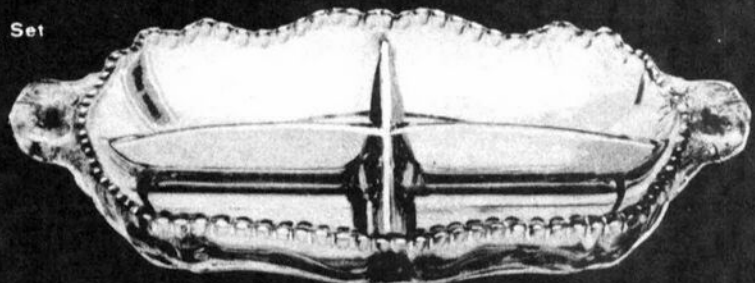
3500/142—14 in. Covered Relish
2 Hdl. 4 Compt.
\$55.00 Doz.



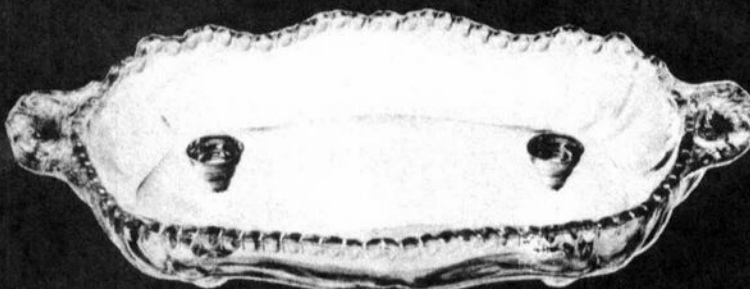
3500/2
Cream Soup & Saucer
\$12.50 Doz.



3500/67—12 in. 6 pc. Relish Set
\$41.25 Doz.



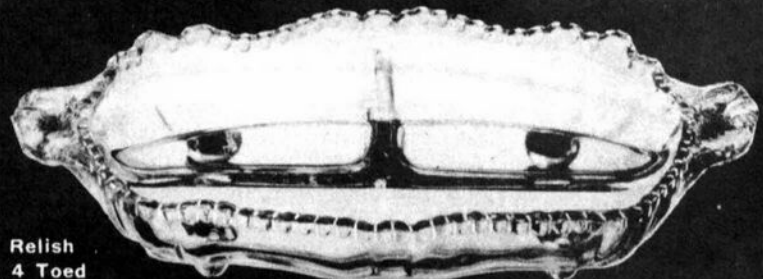
3500/87—10 in. Relish
2 Hdl. 4 Compt.
\$24.75 Doz.



3500/63—10 in. Relish
2 Hdl., No Compt., 4 Toed
\$20.60 Doz.

3500/65—10 in. Relish
2 Hdl., 4 Compt., 4 Toed
\$24.75 Doz.

3500/85—10 in. Relish
2 Hdl. No Compt.
\$20.60 Doz.



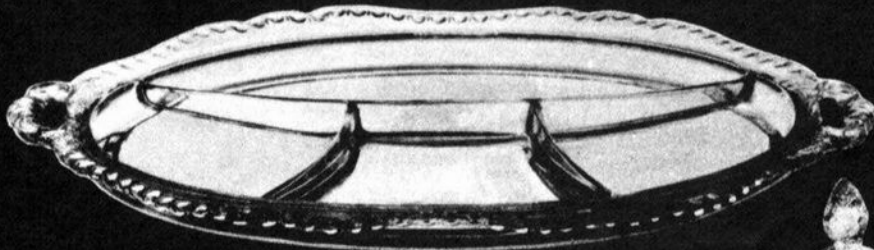
3500/86—10 in. Relish
2 Hdl. 3 Compt.
\$24.75 Doz.

3500/64—10 in. Relish
2 Hdl., 3 Compt., 4 Toed
\$24.75 Doz.

The prices shown are list prices subject to your usual discounts.



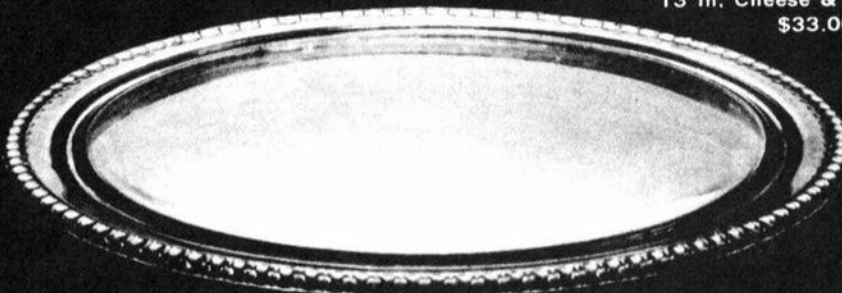
THE CAMBRIDGE GLASS COMPANY



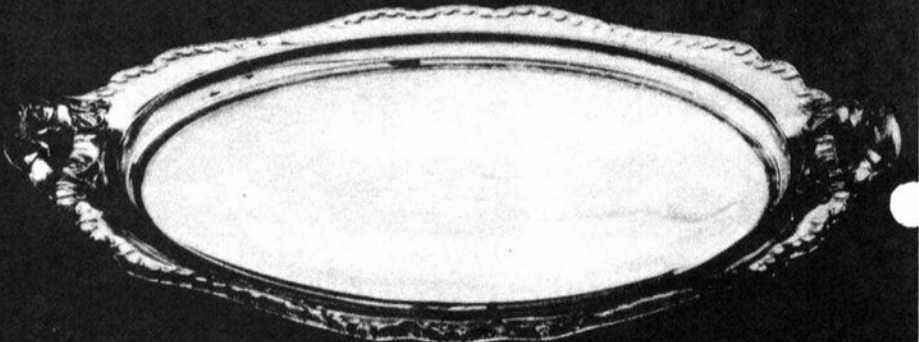
3500/97—14 in. Celery and Relish
2 Hdl. 4 Compt.
\$33.00 Doz.



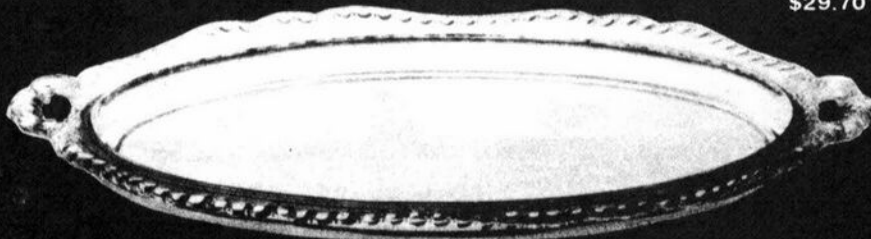
3500/121
13 in. Cheese & Cracker, Covered
\$33.00 Doz.



3500/38—13 in. Torte Plate
\$27.50 Doz.



3500/72—13 in. 2 Hdl. Tray, Round
\$29.70 Doz.



3500/100—14 in. 2 Hdl. Oval Service Tray
\$29.00 Doz.



The prices shown are list prices subject to your usual discounts.

L. DAPKUS

742 SCOTT DR., N., FARWELL, MI 48622
Phone: 517/588-9172

FOR SALE: CAMBRIDGE #3011 LINE

Royal Blue Bowls, Crystal Nude Stems.

#3011/2 table goblet (8)..... 130.00
#3011/3 champagne (6).....120.00
#3011/9 cocktail (4).....110.00
#3011/13 brandy (7)..... 100.00

POSTAGE & INSURANCE EXTRA
Priced Each!

STUDY CLUB NEWS . . continued from page 6

STUDY GROUP #11 - ILLINOIS "THE CAMBRIDGE NUDES"

The Cambridge Nudes met in the home of B.J. and Jane Kersey, August 25th, with eleven members present. The topic for the evening was candlesticks.

Working from a table full of examples of Cambridge candlesticks, B.J. attempted to enlighten us on the subject. The shining example for the evening was the crystal Caprice reflector belonging to Tony Vimmer. Other examples included ones in rubina, windsor blue crown tuscan, dark emerald, forest green, light emerald and amber, to name a few. Also exhibited were etched pieces in Diane, Rosepoint, and gold encrusted Candlelight.

To test the group's knowledge of Cambridge glass, one piece of Tiffin and one piece of Heisey were slipped into the presentation. Everyone was able to identify the piece of Tiffin . . . however, no one correctly identified the piece of Heisey. Thus indicating the continued necessity for the Study Group and its purpose in the detail study of Cambridge glass.

We welcomed new members Don and Lori Mack and Bob Cole to the group. We all left feeling a little "brighter."

submitted by Jane Kersey

CENTRAL TEXAS STUDY GROUP INTEREST EXPRESSED

Cambridge Collectors of Central Texas! Let's get together. Contact Barbara Stock, Route #3, Box 66R, Lockhart, TX 78644.

— Classified —

BUYING: CAPRICE Moonlight or Rosepoint by Cambridge; Rose or Orchid by Heisey; and American, June, Fairfax, Versailles, Trojan, etc., by Fostoria. Nadine Pankow, 207 South Oakwood, Willow Springs, IL 60480. 312/839-5231.

WANTED: CAMBRIDGE STOPPERS for the following decanters - #1325; #3400/92; #3400/119; #3400/118; #3400/156; #1388; #1387. Also ball stoppers for 4 oz. oils. Any quantity, any condition. Julie Sferrazza, 144 Tanglewood Drive, Somerville, NJ 08876.

Varsity Sport Glassware

Our "Thanks" to Scot McCartney of CA for sending us the photos shown below. Scot is the nephew of W.C. (Bill) McCartney, long time Secretary and Sales Manager for the Cambridge Glass Company. Mr. McCartney was an employe of the glass company for more than 50 years.

Scot tells us that his Uncle Bill would give his father a "sample" of these special glasses as they were produced for special events. How wonderful! These tumblers were produced in the early 1930s and we were told by NY Sales Manager Gene Henn that they helped keep the company going during the Great Depression.



MAGICAL UNICORN ANTIQUES

ROUTE #2, NEW CONCORD, OH 43762
Phone: 614/826-7140

Cornucopia w/Sterling foot, King Edward cut w/ruffled top.....	75.00
#3400/5 12" flip bowl, yellow Apple Blossom etch.....	45.00
Decagon 12" bowl, lt. emerald green w/gold enc. Hunt Scene.....	70.00
Crystal Everglade candles, pr.....	85.00
#3400 cream soup, yellow Apple Blossom etch.....	15.00
Round 3 1/2" candlesticks, amber w/gold enc. Wildflower.....	50.00
Decagon center hdd. tray, ebony.....	30.00
#627 candlesticks, lt. emerald green, Cleo etch w/gold trim.....	35.00
#627 candlesticks, peachblo, Cleo etch w/gold trim.....	35.00
Martha plate w/chantilly etch.....	40.00
#3900 Mayo w/ladle & chrome lid etched Wildflower.....	40.00
#3122 stem goblets, Portia etch, yellow w/crystal stem & ft., (3) ea.....	18.00
Crown Tuscan Flying Nude bowl has top of foot slivered off.....	95.00
Mt. Vernon 40 oz. decanter.....	50.00
Decagon ice bucket w/Diane etch.....	75.00
#3121 cordials, Wildflower, ea.....	45.00
12" bowl, etched Wildflower.....	40.00
#3400 Banana bowl, ebony.....	80.00
Ebony round candles, pair.....	40.00
#103 Night Set, lt. emerald green.....	65.00
Caprice Ball jug, crystal.....	70.00
Cornucopia, etched Elaine.....	60.00
45 pieces etched Rosepoint, included: 10" dinner plates; cordials; butter; candy w/cover, etc.....	1800.00
Heisey Clydesdale Horse.....	350.00
New Martinsville Fish.....	70.00
New Martinsville Baby Bear.....	45.00
Fostoria large Madonna.....	75.00

SPECIAL I am selling my personal collection of Cambridge . . . approximately 300 plus pieces - \$20,000 price range. Write for list and include large envelope with two stamps. Please, serious buyers ONLY! Will not be priced individually. Includes: approx. 20 Nudes; crown tuscan Caprice saucer (only one seen); many more unusual pieces. Will not ship collection!

Best to call before 9 AM or after 7 PM.
SHIPPING EXTRA ON AD ITEMS

CLASSIQUE GLASS CO.

BOX 52572, TULSA, OK 74152
Phone: 918/585-3203

CAPRICE

Crystal 8 1/2" 3-compt. relish #124 Silver overlay.....	35.00
Crystal 2-hdd. #131 low ftd. plate.....	22.50
Blue #1338 3-lite tier candleholder.....	45.00
Blue 8 1/2" 3-compt. relish #124.....	37.50
Blue #38 sugar & cream.....	37.50
Mand. Gold #66 4-ftd. oval bowl, crimped.....	65.00

CASCADE

Crystal #4000/165 cvd. candy.....	40.00
Mand. Gold 9 1/2" vase.....	45.00

CROWN TUSCAN

13" Torte plate (shell).....	55.00
13" shallow bowl (shell).....	55.00
10" #575 cornucopia vase.....	65.00
3-compt. cvd. candy #3500/57 Charleton decoration.....	57.50

EVERGLADE

Pink (scarce) 3-ftd. nappy.....	27.50
Blue #27 shallow 7 1/2" bowl.....	25.00
Blue #26 cream & sugar.....	65.00

ROSEPOINT ETCHING

#647 keyhole 2-lite candlestick.....	52.50
#3500 7 oz. tall sherbet.....	22.50
#3400 8" plate (3).....	12.00

NUDE STEMS

Carmen 8" shallow compote.....	175.00
Pistachio cocktail.....	100.00
Mand. Gold cocktail.....	80.00
Mocha cocktail (2).....	100.00

FLOWER FROGS

Rose Lady, green frosted 8 1/2"....	225.00
Bashful Charlotte, crystal 6".....	60.00

MISCELLANEOUS

Dolphin Candlesticks, Mt. Vernon base, 10" crystal.....	100.00
#3400 carmen cream & sugar.....	37.50
Mand. Gold 10" cornucopia vase.....	40.00
Ebony Console Set: #998 12 1/2" bowl & pr. #627 candlesticks.....	120.00

All Items Mint & Priced Each Unless Noted
POSTAGE & INSURANCE EXTRA

COLUMBUS, OHIO ANTIQUE FLEA MARKET

Ohio State Fairgrounds - Lausche Building
Off I-71 Exit 17th Avenue - Columbus, Ohio

OCTOBER 14th

Sunday Only - 7 A.M. to 4 P.M.
Show Admission \$1.00 - Under 12 Free
150 QUALITY DEALERS

SELLING: Advertising Art Deco, books, Cambridge, clocks, coins, collectibles, Depression glass, dolls, Fiesta, fine early furniture, Heisey, jewelry, lamps, oak furniture, post cards, pottery, good primitives, tools and print shop items.

STOCKWELL PROMOTIONS

4214 North High Street
Columbus, Ohio 43214
(614) 267-8163/263-6830/885-2352

NEXT SHOWS: November 11, December 2

Michigan Depression Glass Society

Proudly presents our 12th Annual
**ALL DEPRESSION
ERA GLASS**
Show & Sale
OCTOBER 20, 21, 1984
10:00 A.M. - 5:00 P.M.
DEARBORN CIVIC CENTER
15801 MICHIGAN AVENUE
DEARBORN, MICHIGAN
West of Greenfield - East of Southfield

DONATION \$1.50

Show Guests

GENE FLORENCE WILLIAM HEACOCK
Author Author
Depression Glass Books Victorian & Fenton Glass
GLASS REPAIR AND FOOD AVAILABLE

AMERICAN-MADE GLASSWARE (Early 1900's to the early 1950's) INCLUDING:
NU CUT - NEAR CUT - HEISEY - FOSTORIA - CAMBRIDGE - DUNCAN - AND
UNMARKED FENTON PLUS LOTS OF DEPRESSION GLASS!

STAGE COACH ANTIQUE MALL

(formerly White Pillars Antiques)

7525 East Pike
Norwich, OH 43767
614/872-3720

MANY DEALERS. . .

PLENTY OF PARKING. . .

WIDE SELECTION OF GLASS
AND POTTERY
FURNITURE AND
GENERAL LINE!

BUY and SELL

OPEN YEAR ROUND

Weekdays - 10 AM - 5:30 PM
Sunday - 12 noon - 5:30 PM
Summer Evening Hours - by Chance!

Located 9 miles E. of Zanesville, OH, on I-70 to Norwich Exit No. 164 - then ½ mile W. on Route 40.

THE FANTASTIC
**SAN FRANCISCO
 DEPRESSION ERA**

**GLASS
 CHINA & POTTERY
 SHOW & SALE**

(EAST COAST DEALERS EXHIBITING)

SAT NOV. 17th, 1984 10am-5pm.

SUN NOV. 18th, 1984 10am-5pm.

AT

THE HALL OF FLOWERS

9TH AVE. & LINCOLN WAY
 INSIDE GOLDEN GATE PARK

Admission \$2.50

(\$2.00 WITH THIS TICKET)

FOR YOU & YOUR PARTY

For Information Contact
 "UP TO PARR"

588 Guerrero Street
 San Francisco, CA 94110
 (415) 552-9337

REFERENCE BOOKS AND A WHOLE LOT MORE
 GOOD FOOD

DEALERS



DIRECTORY

NOTE: When writing to the Dealers listed here, please enclose a SASE!

<p>EVELYN M. ALLEN 135 Cynthia Street Heath, Ohio 43055 Mail Order & Shows 614-522-1635 SPECIALIZING IN CAMBRIDGE GLASS!</p>	<p>BENICIA ANTIQUE SHOP 305 First Street Benicia, California 94510 OPEN 11 AM - 5 PM Closed Monday Z. E. LOPES 707-745-0978 VISIT HISTORIC BENICIA and its 28 shops Off Interstate #80 North of San Francisco</p>	<p>CHARLES MIKULIK Box 416 Elizabeth, N.J. 07207 — COLLECTOR — Always paying good prices for CAMBRIDGE CAPRICE in all colors 201-688-1144 CARRY MOST TYPES OF ANTIQUES</p>
<p>BLUE BONNET SHOPPE at The Main Place 102 West Mistletoe at Main San Antonio, TX 78212.....512/736-4900 Antiques, Crystal, Collectibles! Open 7 days!</p>	<p>ANDREJCAK'S ANTIQUES 14533 Bayes Ave. Lakewood, Ohio 44107 Joe & Karen Andrejcek 216-226-3417 SHOWS ONLY — CAMBRIDGE — FENTON — CHINA</p>	<p>HENDERSON'S ANTIQUES 303 Guilford Ave., Woodsfield, OH 43793 Mary & Wilbur Phone: 614 472-1133 SPECIALIZING IN CAMBRIDGE GLASS Shows, Mail & Stagecoach Antique Mall</p>
<p>BERKELEY ANTIQUES 69 Berkeley St. Boston, MA 02116 George or Frank 617-426-1048 CAMBRIDGE, HEISEY, GENERAL LINE</p>	<p>THE HITCHING POST 7467 S R 88 Ravenna, OH 44266 Ph 216-296-3686 D. McDaniel CAMBRIDGE — HEISEY — GENERAL LINE</p>	<p>GLASS RAINBOW of California P.O. Box 127, Elk Grove, CA 95624 Neil & Ervina McCartney Hours: 9am-4pm & 7-9pm 916/685-5485 BY APPOINTMENTS & SHOWS!</p>
<p>D & D ANTIQUES Columbus, Ohio DICK SLIFKO SHOWS ONLY</p>	<p>GEORGE HOFFMAN ANTIQUES 129 South 4th Street Newark, Ohio 43055 614-345-8021</p>	<p>PEG AND DALE GOTSCHALL 833 N. 6th Street, Cambridge, OH 43725 ANTIQUES and COLLECTABLES Including quality crystal and colored glass Hours by Chance or Appointment 614/432-5529</p>
<p>THE GLASS CUPBOARD 39 Shire Oaks Drive Pittsford, New York 14534 Marcia Ellis 716-586-7596 CAMBRIDGE ONLY INQUIRIES INVITED</p>	<p>J & L GLASS Laws Antique Center, Manassas, VA 22111 and 10629 Main St. Fairfax, VA 22030 703/273-8579 BUY & SELL Depression, Cambridge, Heisey, Duncan & Fostoria Glass</p>	<p>1886 HOUSE East Schodack, N.Y. 12063 MAIL and SHOWS Laurie Cruise 518-477-5895 CAMBRIDGE - NORITAKE - AZALEA - D.G.</p>
<p>THE ANTIQUERY 42 E. Main St., St. Rt. 40 New Concord, Ohio 43762 Ph. 614-432-4483 Richard Bennett <i>Specializing in Cambridge Glass</i></p>	<p><i>YOU CAN ADVERTISE YOUR ANTIQUESHOP HERE!</i> 1 inch - \$12 for 12 months</p>	<p>SALT FORK ANTIQUES 10 miles North of Cambridge Exit 54 off I-77, then 1/2 mile East Hours: Tuesday thru Saturday 12 noon - 5 p.m. 614/432-2020 614/439-4039</p>
<p>joyce's antiques Bought and Sold Specializing in HEISEY • CAMBRIDGE • VERLYS • AMERICAN GLASS P O Box 114 Albertson N.Y. 11507 (516) 499-3396</p>	<p>AL STEELE Westerville, Ohio 614-882-6483 or 614-882-7124 Mail Orders and Shows Only HEISEY — CAMBRIDGE — PATTERN GLASS</p>	<p>BETTY'S ICE HOUSE ANTIQUES 517 Fulton Street Wausau, Wisconsin 54401 Quality Antiques Cambridge - Heisey - General Line Betty R. Puestow Hours 1-5 Daily 715-848-7145 or by appointment</p>
<p>THE GLASS MENAGERIE Unit 4, Plaza 20, Route 50 North Easton, MD 21601 Barbara & Bill Danels 301/822-8794 SPECIALIZING IN GLASSWARE OF THE DEPRESSION ERA</p>	<p>SHIRLEY S. LADOUCEUR Antiques and Collectibles Specializing in Cambridge Glass BY APPOINTMENT 7597 Daphne Drive 315-458-5297 No. Syracuse, NY 13212</p>	<p>GREEN ACRES FARM Antiques, Crystal Glass & Collectibles Sat. & Sun. 1-7 PM (614) 927-1882 2678 Hazelton Etna Road (State Route 310 North) Pataskala, Ohio 43062</p>
<p>MARGARET LANE ANTIQUES 2 E. Main St., New Concord, OH 43762 Lynn Welker 614/826-4418 CAMBRIDGE GLASS MATCHING SERVICE Hours Mon.-Fri. 1-5 PM or by Appointment</p>		

1985
AUCTION

Auction time is drawing near and once again, we are requesting your help in making this annual event another great success!

Chairman Lynn Welker would appreciate your sending a list of Cambridge glass items you would like to consign (remember you receive 80% and NCC retains 20% of all sales) to this yearly money maker. All proceeds go to the MUSEUM fund.

There is a lot of work involved in this project, so please do your part and send your list of glass to Lynn right away. He will then contact you as to where and when to deliver it to him. It will be a big help to have arrangements made before the November Quarterly Meeting, if at all possible.

Mail your list to:

Lynn Welker
2 East Main Street
New Concord, OH 43762
or Phone: 614/826-4418

Additional information concerning date, time and place for this Auction will be included in the next issue of the CRYSTAL BALL. It is usually held the last weekend in February, but as of this writing, the date has not been definitely confirmed.

**AUGUST QUARTERLY MEETING
was a Family Affair!**



Those in attendance enjoyed the lovely weather and the MUSEUM grounds!

**REGISTRATION
NOVEMBER
QUARTERLY MEETING**

NOVEMBER 10, 1984

ELKS CLUB - downstairs Banquet Room
1048 Wheeling Avenue, Cambridge, Ohio
(S.W. corner of Wheeling Avenue and 11th Street)
Parking and Entrance at the rear of the building.

Cocktail Hour (pay bar) 6 PM - Buffet Dinner 7 PM

Quarterly Meeting 8 PM

(Reservations not required to attend Quarterly Meeting only.)

PROGRAM: "Cambridge Reproductions"
Presented by Lynn Welker and Frank Wollenhaupt

Enclosed is my check in the amount of \$ _____

Please reserve _____ dinners at \$ 8.50 each.

NAME(s): _____

ADDRESS: _____

RESERVATION DEADLINE IS NOVEMBER 3rd!

Make checks payable to: N.C.C., Inc., and mail to P.O. Box 416, Cambridge, OH 43725. (NOTE: It is not necessary to tear up your CRYSTAL BALL, the above information may be sent in on a plain sheet of paper!)

National Cambridge Collectors, Inc.
P. O. Box 416 Cambridge, Ohio 43725

FIRST CLASS MAIL

FIRST-CLASS MAIL
U.S. POSTAGE
PAID
So. Vienna, Ohio
45369
Permit No. 15

