

Cambridge



Crystal Ball

ISSUE NO. 151

NOVEMBER 1985

Published monthly by the NATIONAL CAMBRIDGE COLLECTORS, Inc.
To encourage and to report the discovery of the elegant and boundless product
of the Cambridge Glass Company, Cambridge, Ohio

THOUGHTS FROM YOUR PRESIDENT

I just knew that all of the work and all of the problems that we encountered, and solved, in the renovation and transformation of the Cambridge "License Plate Bureau" into our Museum, would some day bear fruit!

As you may know, it took us almost three years to get it passed by the state, after we had opened. All of this, because we were not very well schooled on state regulations . . or were not able to read the addendums attached to the plans and understand what they meant. We used this knowledge in preparing the new building for inspection and it payed off!

We installed the underground electrical service to the building, all of the necessary wiring in the building, including receptacles, ventilation system, lighting (both standard and emergency) and the special EXIT lights required by the state. The state electrical inspector and the state building inspector arrived on October 1st and signed the papers of approval. Basically, what took us three years to accomplish in the original building was accomplished in about one month in the new building. We had actually started the wiring of the new building the first week of September. Never look at a commitment as being work. You should always look at it as

an education. It will always be easier that way!

As I write this there have been very few reservations made for the November Quarterly meeting. I hope they will begin coming in soon. You who haven't made plans to attend yet may still have time. When you receive this, just say "I think I'll jump in my car Saturday (November 2nd) and drive to Cambridge for the meeting." It's that easy! For those of you who live a great distance from Cambridge and cannot feasibly attend, we will be thinking of you. (The weather will be nice, I guarantee . . .)

KOLB MENDING AFTER SURGERY

President Willard Kolb continues to recover from the surgery he underwent on September 12th. He must be getting better, he's been heard to complain about having to spend so much time in bed! It is our understanding that his six weeks of "bed rest" will end just in time to attend the November Quarterly Meeting!

For those of you I do not get a chance to see at the November meeting, I hope you are all able to join your families in giving "THANKS" for all we have, and that your Prayers will encompass the whole of mankind. May God bless all of you.

WILLARD

MEMBERSHIP RENEWAL NOTICE

If the date on your address label is.. **11 - 85**

This is your LAST ISSUE of the CRYSTAL BALL.
Please renew NOW!

HAPPY THANKSGIVING!

CAMBRIDGE CRYSTAL BALL

Official publication of National Cambridge Collectors, Inc., a non-profit corporation with tax exempt status. Published once a month for the benefit of its members.

Membership is available for individual members at \$13 per year and additional members (12 years of age and residing in the household) at \$3 each. All members have voting rights, but only one *Crystal Ball* will be mailed per household.

Back issues of the *Crystal Ball* are available (beginning with Issue No. 1, May 1973) for members only. Cost \$.60 each or 12 issues for \$7.

1984-85 OFFICERS & COMMITTEE CHAIRPERSONS

PRESIDENT	Willard P. Kolb
VICE-PRESIDENT	David B. Rankin
SECRETARY	Janice Y. Hughes
TREASURER	William C. Smith
SERGEANT-AT-ARMS	Marybelle Moorehead
BUDGET & FINANCE	David B. Rankin
BY-LAWS	David B. Rankin
CONVENTION	David B. Rankin
MEMBERSHIP	Phyllis D. Smith
MUSEUM	Billy Harbaugh
PROGRAM & ENTERTAINMENT	Frank Wollenhaupt
PROJECT	Willard P. Kolb
PUBLIC RELATIONS	William C. Smith
PUBLICITY	Joseph Andrejcek
STUDY GROUP ADVISOR	Evelyn M. Allen
1985 AUCTION	Lynn M. Welker
1985 ANTIQUE SHOW	Joy McFadden
1985 FLEA MARKET	Larry F. Hughes
CRYSTAL BALL EDITOR	Phyllis D. Smith

CLASSIFIED ADVERTISING RATES

5¢ per word \$1.00 minimum
 We cannot mix type size in classified advertisements. Abbreviations and initials will count as words. Payment in full MUST accompany all ads.

DISPLAY ADVERTISING RATES

(camera ready ads preferred)

	Members	Non-Members
1/8 page (9 items)	\$4.00	\$6.00
1/4 Page (20 items)	7.00	10.00
1/2 page (20 items)	12.00	18.00
3/4 page	17.00	25.00
Full page (50 items)	22.00	33.00

DEALERS DIRECTORY

5 line maximum \$12.00 for 12 months
 Cambridge *Crystal Ball* assumes no responsibility for items advertised and will not be responsible for error in price, description or other information.

Advertising copy, articles, club news and notices must be in our hands by the 10th of each month to assure publication in our next issue. Paid advertisements containing reproductions or new glass will not knowingly be accepted for publication.

Opinions or information stated in any signed article or letter printed in the *Crystal Ball* are those of the authors and may or may not agree with National Cambridge Collectors, Inc. The Editor reserves the right to refuse and to edit any material submitted for publication so as to conform with the editorial style of the *Crystal Ball*.

PLEASE ADDRESS ALL CORRESPONDENCE TO

National Cambridge Collectors, Inc.
 P.O. Box 416 Cambridge, Ohio 43725

PRESIDENT: Willard Kolb 614/695-0695

SECRETARY: Janice Hughes . . . 614/432-7823

EDITOR: Phyllis Smith 513/323-3888

NCC MUSEUM of Cambridge Glass is located on U.S. Route 40, 1/8 mile east of I-77 near Cambridge. Hours: 12 noon to 4 PM - Wednesday thru Sunday. (March thru October)

PLEASE NOTIFY US IMMEDIATELY OF ANY CHANGE IN YOUR ADDRESS

Please enclose a SASE when requesting information

CAMBRIDGE GLASS BOOKS FOR SALE

by National Cambridge Collectors, Inc.

* **COLORS IN CAMBRIDGE GLASS**
 (128 pages - 60 color plates - fully indexed)
 Hardbound with Price Guide \$19.95

* **1930-34 CAMBRIDGE GLASS CO. CATALOG REPRINT**
 (250 page reprint of original catalog)
 Hardbound with Price Guide \$14.95

* **1949-53 CAMBRIDGE GLASS CO. CATALOG REPRINT**
 (300 page reprint of original catalog)
 Hardbound with Price Guide \$14.95

* **1956-58 CAMBRIDGE GLASS CO. CATALOG REPRINT**
 (164 page reprint of original catalog)
 Paperback \$6.95

1985 COMBINED PRICE GUIDE
 for 1930-34 & 1949-53 catalog reprints Postpaid \$5.75

*NCC MEMBERS ONLY: *These publications are available at 10% discount - or all four (4) at one time for \$50.00.*

by Mark Nye

CAMBRIDGE STEMWARE
 (95 Stemware lines with 107 illustrations)
 Paperback \$14.95

by Cambridge Buffs Study Group

NEARCUT
 (108 page reprint of 1910 Cambridge Catalog)
 Paperback with Price Guide \$9.95

by Mary, Lyle and Lynn Welker

CAMBRIDGE GLASS CO.
 (120 pages of reprint from 8 old catalogs)
 Paperback \$6.95

CAMBRIDGE GLASS CO. BOOK II
 (119 pages of reprint from old catalogs)
 Paperback \$6.95

CAMBRIDGE, OHIO GLASS IN COLOR II
 Spiralbound \$5.95

by Harold and Judy Bennett

1903 CAMBRIDGE GLASS CO. CATALOG REPRINT
 (106 page reprint of an original catalog)
 Paperback \$7.50

Address your orders to:

BOOKS
 National Cambridge Collectors, Inc.
 P.O. Box 416
 Cambridge, OH 43725

Please add \$1.00 (P & I) per order.
 (Not required for Price Guide)
 Ohio residents please add 6% state sales tax.

DEALER DISCOUNTS AVAILABLE - PLEASE WRITE!



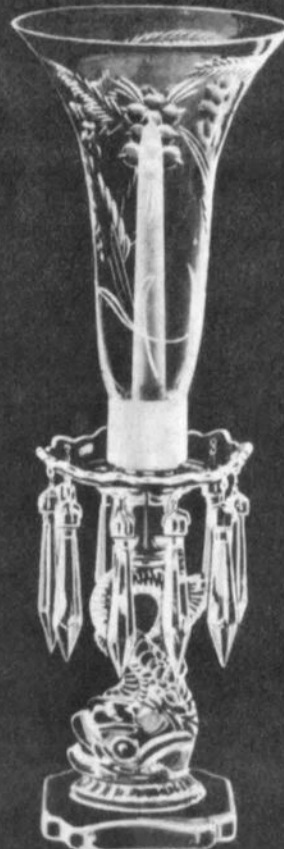
The Cambridge Glass Company



Hurricane Lamps



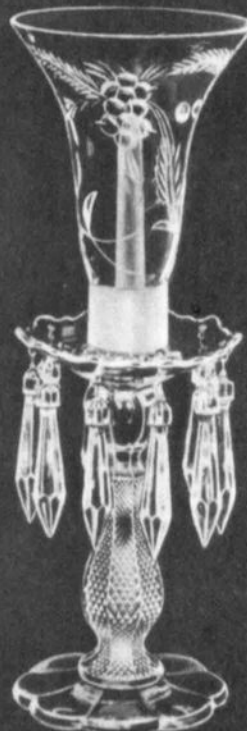
1612/1614—16 in.
R. C. Eng. Manor (1003)



1612/1615—18 in.
R. C. Eng. Montrose (1004)



1613/1615—18 in.
R. C. Eng. Manor (1003)



1613/1614—16 in.
R. C. Eng. Montrose (1004)

Cambridge, Ohio - - - U. S. A.



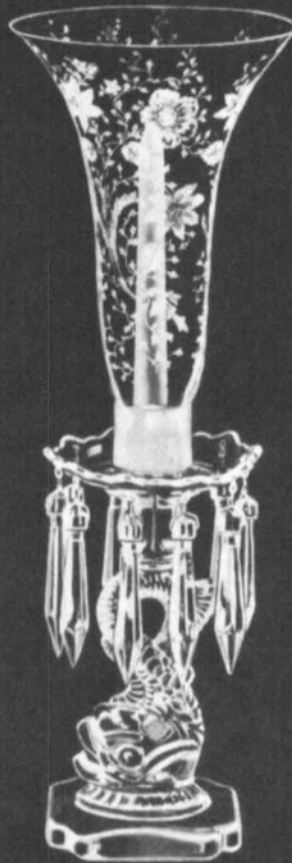
The Cambridge Glass Company



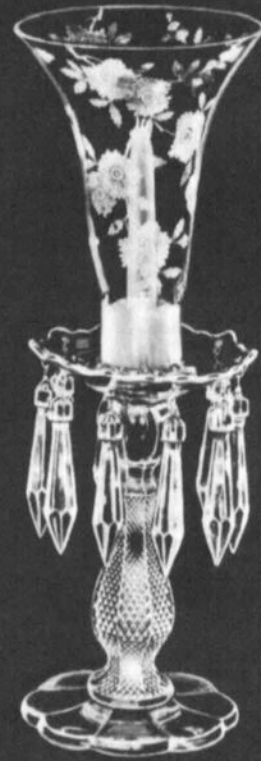
Hurricane Lamps



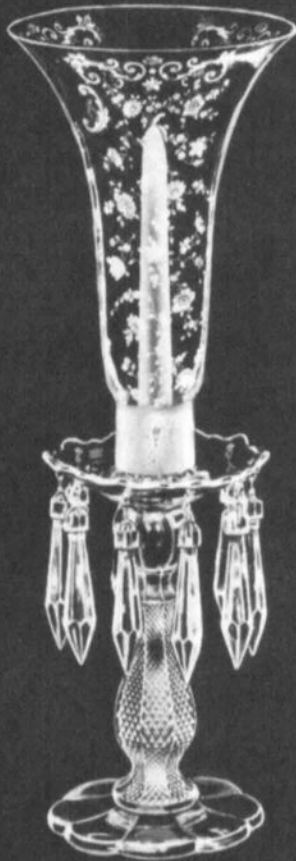
1612/1614—16 in.
Etched Rose Point



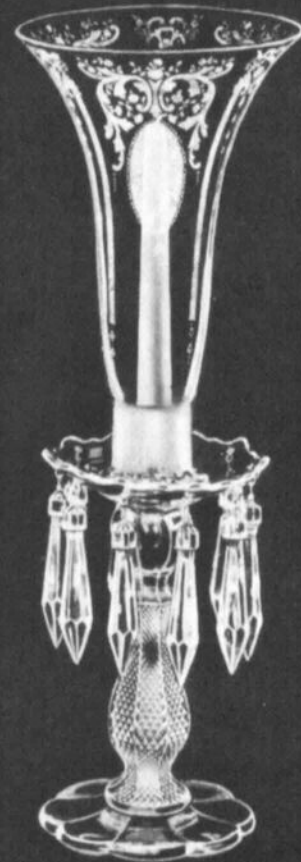
1612/1615—18 in.
Etched Wildflower



1613/1614—16 in.
Etched Blossom Time



1613/1615—18 in.
Etched Chantilly



1613/1615—18 in.
Etched Candlelight

Cambridge, Ohio - - - U. S. A.

CHANTILLY

by MARK NYE

"THE DISTINCTIVE CHANTILLY, A DESIGN OF
EXCEPTIONAL DELICACY AND REFINEMENT . . ."

This is how Cambridge was continuing to introduce Chantilly to the buying public in the fall of 1939. To continue the above, taken from the October 1939 issue of House and Garden magazine, "Both Chantilly and Blossom Time are exceptionally light in weight and appearance, and harmonize perfectly with any type of decoration. Available in over 150 pieces at unusually modest prices."

Exactly when Chantilly was first shown is not known, but it was probably during early 1939 and almost certainly not before the fall of 1938. As always, the word "new" when found in Cambridge advertising, is not to be taken literally every time it appears. For example, Chantilly was being labeled "new" in July 1940, months after the above advertisement was published and the etching appeared in the January 1940 catalog.

Chantilly proved to be a popular etching and thus became a major line for Cambridge. Over its almost twenty years of original availability, five different stemware lines were decorated with Chantilly and there were, at consecutive times, two different dinnerware lines. In addition, there were also a wide selection of decorative and accessory pieces offered with the Chantilly etching.

There is evidence to indicate Chantilly was being etched on two stemware lines, #3600 and #3625, very early in 1939. By June of that year it is known the #3600 line was being offered to the trade etched Chantilly with a gold edge D/1060; and etched Chantilly, gold encrusted, also known as D/1061.

It may have been around this same time, or perhaps not until 1940-41, that Chantilly was etched onto a seldom seen line of Cambridge stemware, #3138. This #3138 stem-line, which has a molded "lady leg stem," is also known with two rock crystal cuttings. It's only known Cambridge catalog appearance is in a Rock Crystal catalog issued in May 1940. (see page 9, for catalog page showing this stem line.)

This #3138/Chantilly combination has not been found in any Cambridge documents or advertising and is known only through the existence of actual examples that have been found during the past two years. It was apparently a short lived stem line, cut or etched, since little is found today.

Recent research has produced evidence that it was probably sometime in 1942 that Chantilly was first used on #3775 stemware and not a year earlier as first believed. At the present time, however, neither date can be confirmed or ruled out.

The last line of stemware to be introduced with the Chantilly etching was #3779 and this combination was brought out sometime between June 1949 and September 1950. It, along with the #3600, #3625, and #3775 stemware, remained available etched Chantilly until the initial plant closing in the summer of 1954. During the reopen period, only stemware from the #3600 and #3625 lines was available from open stock with the Chantilly etching. Through the Special Order service, available at least during 1956, replacement pieces for the #3775 and #3779 lines was made available.

continued on page 6



Chantilly *Fine Lace of Rare Beauty*

And CHANTILLY glassware—what name more appropriate for this beautiful sparkling Crystal.

An Etched design of delicate intricacy done with the skill and precision for which Cambridge Hand-made glass is famous.

Only a few of the very large selection of pieces available for a complete glassware service are shown here.

The Cambridge Glass Company
Cambridge, Ohio



Old advertising pamphlet showing "CHANTILLY" on the Martha #3600 blank.
CIRCA: 1938-1939

In addition to the five complete lines of stemware, Chantilly will also be found on the #7801 12 oz. footed ice tea; the #7801 5 oz. footed tumbler; the #7911 cocktail (commonly called a #7801 cocktail), and the #7966 2 oz. sherry. Both of the true #7801 items were decorated with D/1060 and D/1061 during the late 1930s and early 1940s. (Ref: NCC 1930-34 Catalog Reprint, pages 33-B-7 and 34-4 for shape of these #7801; #7911; and #7866 stemware lines.)

During it's years in the Cambridge line, Chantilly was, as mentioned earlier, used on two major lines - Martha (#3600) and Corinth (#3900). (Conclusive proof that the Martha line had the numerical designation #3600 was acquired when molds for Martha items were found with the number 3600 stamped into them.)

Martha was the first of the two lines to be used for this etching, and there was a full dinnerware line as well as accessory, serving and decorative items. It is highly likely, but unproven that the Martha line was introduced concurrently with Chantilly in late 1938 or early 1939. Following this line, which was for the most part discontinued during the late 1940s, Corinth became the blank of choice to receive the Chantilly etching. The first catalog to show the Corinth line is the one issued in June 1949 and,

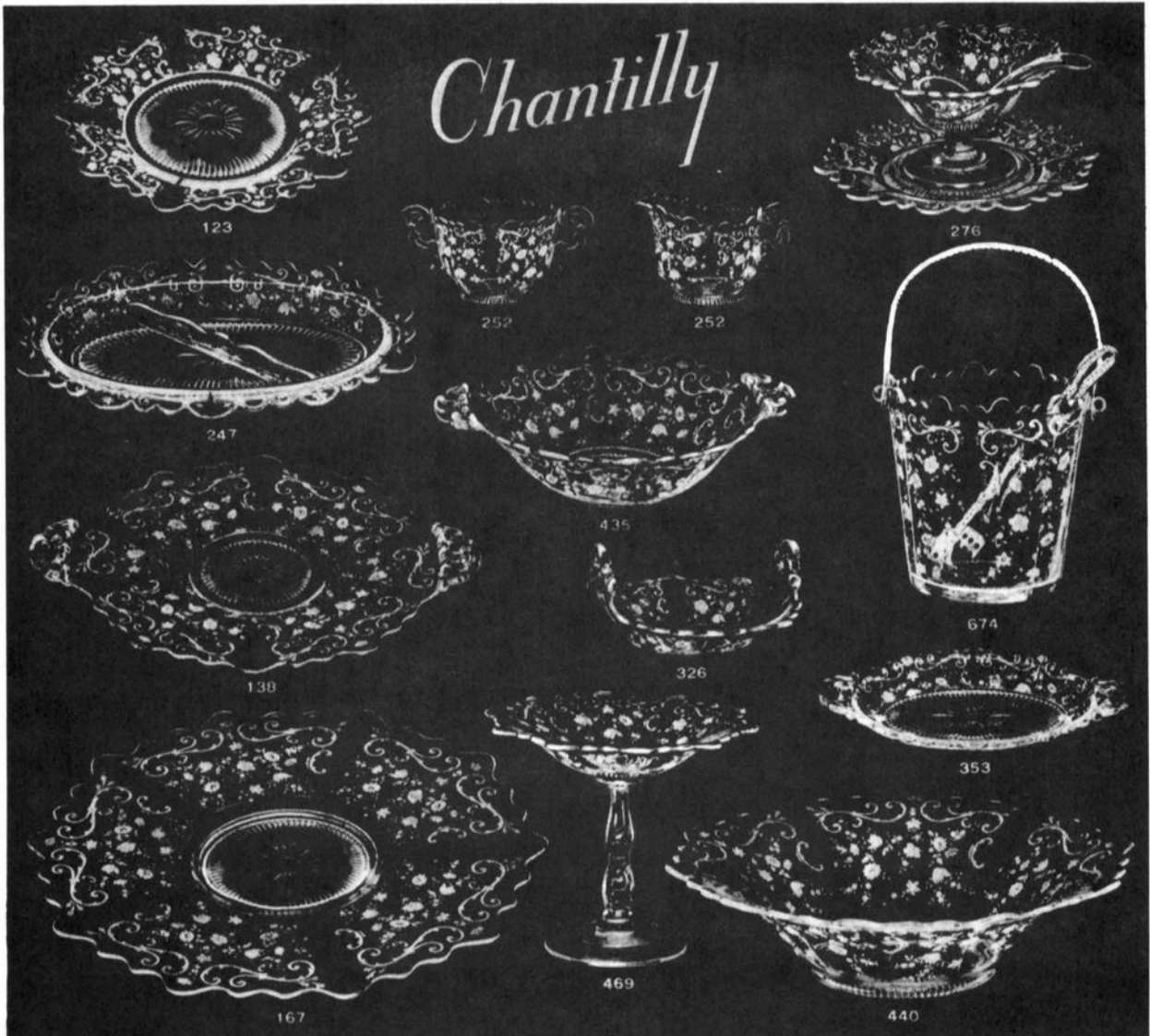
again, there is a full line of dinnerware, serving, accessory and decorative items. Both the Martha and Corinth lines included a 10 1/2" service or dinner plate, in addition to the regular 9 1/2" dinner plate.

Apart from the two major lines, selected blanks from several other well known Cambridge lines were used in conjunction with Chantilly. These were #3400, Gadroon and Pristine, in order as to the relative number of items etched Chantilly. Items from the #3400 line with Chantilly were mainly jugs, decanters and tumblers. Pieces used from the other two lines consisted mainly of bonbons, bowls and relishes.

Among the items to be found etched Chantilly are eight jugs or pitchers. From the first years of the pattern we have the #1561; #119; #3400/38 Ball jug; and the #3400/152 Doulton pitcher. During the 1950s, these were replaced with the four pitchers from the Corinth line, #115; #116; #117; and #118. Probably the most spectacular single piece to be found etched Chantilly is the Martha line ten quart punch bowl. Complementary to this punch bowl is the Martha #129 18" tray or under plate and the #488 5 oz. punch cup. Since there was no Martha punch ladle, the punch set utilized the ladle from the Tally-Ho line.

When the Martha line was discontinued, sometime during the 1940s, the two blown

continued on page 8



CHANTILLY continued from page 7

candy boxes - #3600/3 tall and #3600/4 low - were likewise dropped from the Cambridge line. Replacing them at first was the #3121 tall blown comport, but it was offered only without a lid and hence was a candy dish, not a candy box. By September 1950, the #1066 5 3/8" blown comport and the #1066 5 3/8" blown candy box and cover had also joined the Chantilly line. These two items were only offered until the 1954 plant closing. During the reopen period, only the open #3121 comport was listed. There is no evidence to indicate that any other items from the #3121 or #1066 lines were ever etched Chantilly.

Over the years, the availability of Chantilly varied. The advertisement quoted in the beginning stated "available in over 150 pcs" and when the 1940 catalog was issued, thirteen pages were devoted to this etching. The January 1940 price list had a total of 348 entries for Chantilly; 182 for etched Chantilly, which includes those for the two stemware lines, #3600 and #3625; and 83 each, including the #3600 stemware, for D/1060 and D/1061.

By June 1949 there were only 113 catalog numbers for Chantilly, including 32 for the three stemware lines, #3600, #3625, and #3775; and 30 for D/1060, consisting of 10 items from the #3600 stemware and 20 flatware pieces; and no listing at all for D/1061. Except for two salad plates, none of the items offered were from the Martha line, the major blank now being Corinth.

Come September 1950 an additional 23 items had been made available with Chantilly with no change in the listing for D/1060. These same items remained available until the Fall of 1953 when all D/1060 was discontinued.

The two 1956 price lists each had 106 entries for Chantilly, including 21 for the two remaining stemware lines. Again Corinth was the major blank. The final Cambridge price list, dated 1958, only carried 76 Chantilly listings, including 19 for the #3600 and #3625 stemware and no gold decorated Chantilly was available from open stock during these reopen years. This final listing for Chantilly still included a dinnerware line, including the 10 1/2" Corinth service or dinner plate.



3778
2½ oz. Wine



3600
2½ oz. Wine



3625
2½ oz. Wine



3775
2½ oz. Wine



The Cambridge Glass Company



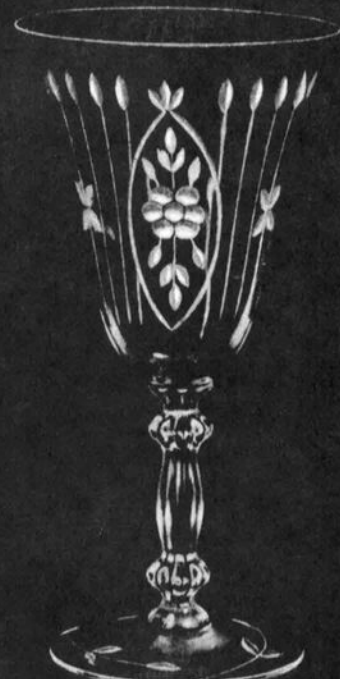
ROCK CRYSTAL



3138
Spring Beauty (999)



3139
Juliana (997)



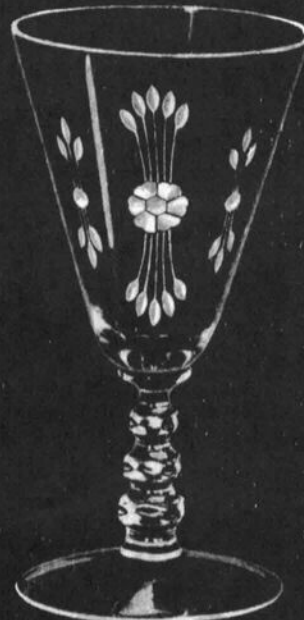
3130
Wedding Rose (998)



3138
Carnation (732)



3139
Maryland (985)



3139
Lyric (995)



3650
Meadow Rose

Cambridge, Ohio - - - U. S. A.



ROCK CRYSTAL



3132
Chesterfield
(952)



3132
Belfast
(942)



3139
Cranston
(960)



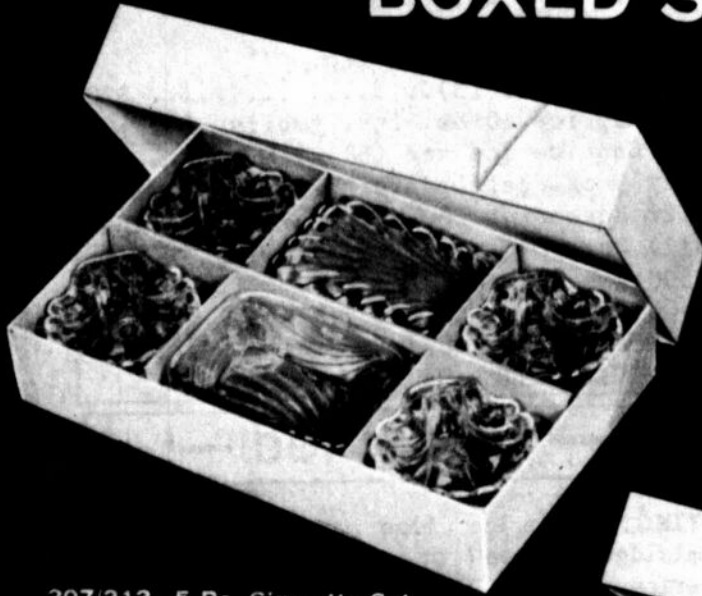
3134
Broadmoor
(951)



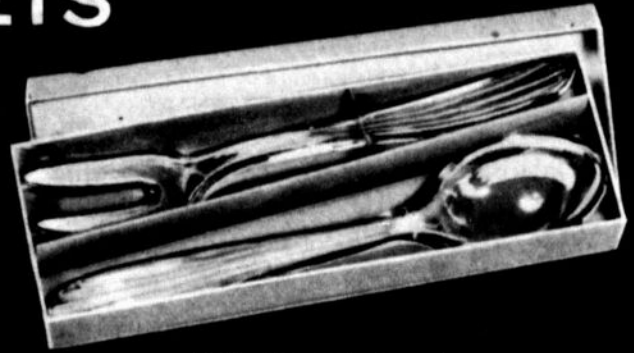
3134
American Star
(953)



BOXED SETS



207/213 - 5 Pc. Cigarette Set
in White Display Box



609 - Salad Fork and Spoon
In White Display Box



SS 34 - 8 Pc. Ash Tray Set
in White Display Box



Mount Vernon 98/24 - 9Pc.
Celery & Salt Dip Set
In White Display Box

June 1941



NCC CHRISTMAS GIFT IDEAS

When making up your Christmas list this year, don't forget to add a membership in NCC for that special friend or relative who loves glass!

Send in their name and address (\$13 for individual member and \$3 for each associate living in the same house) to reach us by December 5th, and we'll send a greeting card with your name and their membership card(s) enclosed, to reach them in time for Christmas. Their membership will begin with the January 1986 issue of the CRYSTAL BALL. HURRY - TIME IS SHORT!

If a new membership isn't just what you're looking for, then how about a new book. See page 2 for a complete listing. Don't forget that two new books have been published this year. One on NEAR CUT, and one on CAMBRIDGE STEMS. Also, the new price guide for the 1930-34 and 1949-53 NCC Catalog Reprints (they have been combined into one book) is now available.

If you are looking for "stocking stuffers," we still have a few of those cute little "pencil dog" Cup Plates in crystal, cobalt, teal and amethyst at just \$7 each, plus \$1 postage and handling. These come individually boxed and ready to wrap. Better order these quick - there aren't too many left!

The frosted ebony Scotty Dog bookends would make a nice gift for anyone and at only \$30 each, plus \$3 postage and handling, they are a collectible that is bound to increase in value as the years go by.

. . . if you live in Ohio, please add 6% state sales tax.

Make your checks payable to National Cambridge Collectors, Inc., and mail to: N.C.C., Inc., P.O. Box 416, Cambridge, OH 43725.

DELBERT SHERWOOD

P.O. BOX 188, RICHMOND, IL 60071
815/678-4219

#300/2 Caprice 12 oz. ftd. tumblers (3).....	\$20
#300 Caprice 10 oz. ftd. tmblrs. (3)	20
#301 Caprice ice tea (6).....	20
#3121 5 oz. cafe parfait (6).....	12
#3121 Rosepoint low sherbet (6).....	32
#3121 Rosepoint ice tea (5).....	35
#3500 Rosepoint goblet (8).....	38
#3500 Rosepoint tall sherbet (8)....	32
#3121 Wildflower oyster cocktail (8)	15

PRICE EACH - INCLUDES SHIPPING!

— Classified —

BUYING: Caprice blue or Rosepoint by Cambridge; Rose or Orchid by Heisey; American, June, Fairfax, Versailles, Trojan, etc., by Fostoria; and Depression Glass in crystal or colors. **Nadine Pankow**, 207 S. Oakwood, Willow Springs, IL 60480. 312/839-5231

FOR SALE: Regency Pattern. 8 sherbets; 7 waters; 4 ice teas; 3 wines. \$20 each. **Mary C. Stephens**, 409 Johnson Drive, Dillon, SC 29536.



NCC COLLECTOR'S CUP PLATE!

Available in crystal, cobalt, teal, and amethyst - \$7 each.

LYNN WELKER

2 EAST MAIN STREET, NEW CONCORD, OH 43762
Phone: 614/826-7414 or 614/826-4418

ROSEPOINT

#3900 Line

#65 12" 4 ftd. oval bowl.....	\$ 60
#100 6 oz. oil cruet & stopper....	90
#24 10 1/2" dinner plates (6).....	85
#126 12" 3-part celery/relish.....	45
#129 3-pc. mayonnaise set.....	50
#671 ice bucket w/hldd. & tongs...	100
#131 8" 2 hldd. ftd. bonbon plate.	25
#167 14" plate.....	50
#35 13 1/2" cake plate.....	45
#120 12" 5-part celery/relish.....	65
#115 76 oz. pitcher.....	195

#3400 Line

#52 5" butter & cover.....	115
#91 8" 3-part, 3 hldd. relish.....	35
#4 12" 4 ftd. bowl, flared.....	50
#90 6" 2-part, 2 hldd. relish.....	25
#38 12 oz. tumblers (5).....	32
#38 80 oz. jug, gold encrusted....	175

#3500 Line

#69 6 1/2" 3-part relish.....	27
#59 3-pc. mayonnaise set.....	75
#68 5 1/2" 2-part relish.....	22
#4 7 1/2" dessert plates (6).....	12
#112 14" 3-compartment tray.....	145

Miscellaneous

#628 1 lite candlesticks (pair)...	60
#1309 5" globe flower holder.....	45
#6004 6" ftd. vase.....	40
#6004 8" ftd. vase.....	45
#646 5" candlesticks (pair).....	50
#647 6" 2 lite candlesticks (pair)	60
#615 3" x 3 1/2" cigarette box....	100
#147 8 oz. marmalade & cover.....	90
#394 10" 5-compartment relish.....	65
#306 6" candy box & cover.....	85
#1402/131 8 1/2" 3-compartment bowl, rare.....	145
#1402/95 4-pc. twin salad dressing set.....	85
#3121 5 3/8" blown comport.....	55
#3121 candlesticks w/etch. bobs...	200
#3121 10 oz. goblets (12).....	22
#3121 6 oz. tall sherbets (10)....	20
#3121 3 oz. cocktails (5).....	25
#3121 3 1/2 oz. wines (8).....	40
#3121 1 oz. cordials (8).....	50
#3121 5 oz. ftd. tumblers (8)....	25
#3121 6 oz. low sherbets (5).....	15

ROSEPOINT continued

#3500 7 oz. tall sherbets (4).....	\$ 20
#3500 3 oz. cocktails (4).....	27
#3500 2 1/2 oz. wines (6).....	45
#3500 10 oz. ftd. tumblers (6)....	25
#3500 7 oz. low sherbets (7).....	16

SWANS

#1042 6 1/2" - Style III mandarin gold.....	90
emerald green.....	90
carmen.....	175
#1040 3" - Style II, signed peach-blo.....	30
light emerald.....	30
gold krystol.....	40
amber.....	75
amberina.....	110
crown tuscan (style III)....	25

MISCELLANEOUS

#518 Draped Lady Flower Figure 8 1/2", gold krystol.....	175
#1119 Eagle.....	50

Elaine etched

#3500/28 10" bowl.....	35
#3400/851 ice bucket.....	55

Portia etched

#3400/38 80 oz. ball jug.....	85
-------------------------------	----

Cleo etched - amber

#3077 9 oz. goblets (6).....	18
------------------------------	----

Apple Blossom etched - pink

#3400/851 ice bucket.....	60
#3400/6 11 1/2" cheese/cracker....	45

Laurel Wreath cutting

#968 2 pc. icers (4).....	18
stemware.....	write

Lynbrook cutting

#555 7 1/2" plates (8).....	6
#628 candlesticks (pair).....	25
Pristine ind. sugar & cream	22

King Edward cutting

#3700 tall sherbets (6).....	12
#3700 wines (4).....	15

WRITE or CALL: Crystal and blue
Caprice; Cambridge arms and Epergne
parts; Cordials; Baskets.

POSTAGE EXTRA - EXCESS REFUNDED!

COLUMBUS ANTIQUE FLEA MARKET (ANTIQUES & COLLECTIBLES)

Ohio State Fairgrounds - Lausche Building
Off I-71 Exit 17th Avenue - Columbus, Ohio

NOVEMBER 10th

Sunday Only - 7 A.M. to 4 P.M.
Show Admission \$1.00 - Under 12 Free
150 QUALITY DEALERS

SELLING: Advertising Art Deco, books, Cambridge, clocks, coins, collectibles, Depression glass, dolls, Fiesta, fine early furniture, Heisey, jewelry, lamps, oak furniture, post cards, pottery, good primitives, tools and print shop items.

STOCKWELL PROMOTIONS

4214 North High Street
Columbus, Ohio 43214
(614) 267-8163/263-6830/885-2352

NEXT SHOW: **DECEMBER 1st**



ALL GLASS SHOW & SALE

Sponsored by:

"TUSCAN CROWNS" STUDY GROUP OF THE

National Cambridge Collectors, Inc.

Featuring:

CAMBRIDGE, Heisey, Fostoria, Fenton, Carnival,
DEPRESSION GLASS, China, Pottery and More.

FRIDAY, NOV. 29, 1985
5:00 pm - 10:00 pm

SATURDAY, NOV. 30, 1985
SUNDAY, DEC. 1, 1985
10:30 am - 5:00 pm

Donation:
\$2.00 ea.

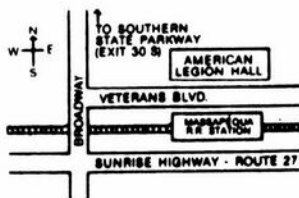
Admit 2 at:
\$1.75 ea.
WITH THIS AD

AMERICAN LEGION HALL

66 Veterans Blvd.
Massapequa, N.Y.
(516) 798-9661

(OPP. MASSAPEQUA R.R. STATION)

FOR INFORMATION:
R. Serzanin - (516) 273-5084



STAGE COACH ANTIQUE MALL

(formerly White Pillars Antiques)

Doris & Roy Isaacs

7525 East Pike
Norwich, OH 43767

614/872-3720

MANY DEALERS. . .

PLENTY OF PARKING. . .

WIDE SELECTION OF GLASS
AND POTTERY
FURNITURE AND
GENERAL LINE!

BUY and SELL

OPEN YEAR ROUND
Weekdays - 10 AM - 5:30 PM
Sunday - 12 noon - 5:30 PM
Summer Evening Hours - by Chance!

Located 9 miles E. of Zanesville, OH, on I-70 to Norwich
Exit #164 - then 1/2 mile W. on Route 40.

DEALERS DIRECTORY



NOTE When writing to the Dealers listed here, please enclose a SASE!

<p>THE GLASS URN 456 West Main Street, Suite G. Mesa, AZ 85201 602 / 833-2702 Mail Order Shows Open Shop CAMBRIDGE, FOSTORIA, HEISEY, ETC.</p>		
<p>EVELYN M. ALLEN 135 Cynthia Street Heath, Ohio 43055 Mail Order & Shows 614-522-1635 SPECIALIZING IN CAMBRIDGE GLASS!</p>	<p>BENICIA ANTIQUE SHOP 305 First Street Benicia, California 94510 OPEN 11 AM - 5 PM Closed Monday Z. E. LOPES 707-745-0978</p>	<p>CHARLES MIKULIK Box 416 Elizabeth, N.J. 07207 — COLLECTOR — Always paying good prices for CAMBRIDGE CAPRICE in all colors 201-688-1144 CARRY MOST TYPES OF ANTIQUES</p>
<p>ANDREJCAK'S ANTIQUES 14533 Bayes Ave. Lakewood, Ohio 44107 Joe & Karen Andrejcek 216-226-3417 SHOWS ONLY — CAMBRIDGE — FENTON — CHINA</p>	<p>VISIT HISTORIC BENICIA and its 28 shops Off Interstate #80 North of San Francisco</p>	
<p>ABRAHANTE'S Matching Service Discontinued China, Crystal & Flatware Patterns 7288 S.W. 40th Street Miami, FL 33155 PHONE: 305 / 262-7336 BUY & SELL</p>	<p>RICHARD BENNETT 64183 Warne Drive, Cambridge, OH 43725 Phone: 614 / 432-4483 SPECIALIZING IN CAMBRIDGE GLASS Stagecoach Mall - Bldg. 3 - Norwich, OH</p>	<p>BERKELEY ANTIQUES 69 Berkeley St. Boston, MA 02116 George or Frank 617-426-1048 CAMBRIDGE, HEISEY, GENERAL LINE</p>
<p>MOSTLY HEISEY 16 Clayton Place, Albany, NY 12209 Rhoda Curley 518 / 482-6272 SHOP and MAIL ORDER</p>	<p>D & D ANTIQUES Columbus, Ohio DICK SLIFKO SHOWS ONLY</p>	<p>THE GLASS MENAGERIE 322 Market Street: Suite 101 Denton, Maryland 21629 Barbara & Bill Danels 301/822-8794 SPECIALIZING IN GLASSWARE OF THE DEPRESSION ERA</p>
<p>THE GLASS CUPBOARD 39 Shire Oaks Drive Pittsford, New York 14534 Marcia Ellis 716-586-7596 CAMBRIDGE ONLY INQUIRIES INVITED</p>	<p>JUDY'S ANTIQUES Judy Bennett 422 S. Ninth Street (Corner of Jefferson) Cambridge, Ohio 43725 BUYING Ph. 614-432-5855 SELLING Cambridge Glass my Specialty</p>	<p>"Happiness Is" - The Stultzs 3106 Warren Ct., Glen Allen, VA 32060 Shows and Mail (Richmond Area) 804/262-1273 GLASS CIRCA 1890-1960</p>
<p>PEG AND DALE GOTSCHALL Antiques, Cambridge and Other Quality Glass 833 N. 6th St., Cambridge, Ohio 43725 Phone 614/432-5529 Stagecoach Mall — Bldg. 2 — Norwich, Ohio</p>	<p>GREEN ACRES FARM 2678 Hazelton Etna Rd., Pataskala, OH 43062 (State Route 310 North) Sat. & Sun. 1-7 PM 614/927-1882 Antiques, Crystal Glass and Collectibles</p>	<p>HENDERSON'S ANTIQUES 303 Guilford Ave., Woodsfield, OH 43793 Mary & Wilbur 614/472-1133 SPECIALIZING IN CAMBRIDGE GLASS Shows, Mail & Stagecoach Antique Mall</p>
<p>THE HITCHING POST 7467 S. R. 88 Ravenna, OH 44266 Ph. 216-296-3686 D. McDaniel CAMBRIDGE — HEISEY — GENERAL LINE</p>	<p>TASTE OF HONEY Glassware - Collectibles Clarke & Carole West 3433 Turner Drive Springfield, Ohio 45504 SHOWS ONLY</p>	<p>1886 HOUSE East Schodack, N.Y. 12063 MAIL and SHOWS Laurie Cruise 518-477-5895 CAMBRIDGE - NORITAKE - AZALEA - D.G.</p>
<p>L & M ANTIQUES 1331 S.E. 4th Ave., Pompano Beach, FL 33060 Lydia & Cliff McNeil 305/943-2274 CAMBRIDGE & FOSTORIA OUR SPECIALTY Buy & Sell Shows Only</p>	<p>SHIRLEY S. LAHOUSEUR Antiques and Collectibles Specializing in Cambridge Glass BY APPOINTMENT 7597 Daphne Drive 315-458-5297 No. Syracuse, NY 13212</p>	<p>MARGARET LANE ANTIQUES 2 E. Main St., New Concord, OH 43762 Lynn Welker 614/826-4418 CAMBRIDGE GLASS MATCHING SERVICE Hours Mon.-Fri. 1-5 PM or by Appointment</p>
<p>THE COUNTRY PEDDLER ANTIQUES 111 W. Main St., New Concord, OH 43762 JACK & SHARON BOGART PHONE 614/826-7439 BUY SELL APPRAISE REFINISH General Line-Cambridge Glass</p>	<p>AL STEELE Westerville, Ohio 614-882-6483 or 614-882-7124 Mail Orders and Shows Only HEISEY — CAMBRIDGE — PATTERN GLASS</p>	<p>SKYLINE DRIVE ANTIQUES 5432 Skyline Drive, Cambridge, OH 43725 Drew & Donna Davis 614 / 432-2621 SPECIALIZING IN CAMBRIDGE GLASS! Shows Mail Order Matching Service</p>

