



# Cambridge Crystal Ball

Published monthly by the National Cambridge Collectors, Inc.  
to encourage and report the discovery of the elegant and boundless product  
of the Cambridge Glass Company of Cambridge, Ohio

Issue No. 176

December 1987



This lovely picture is being shared with us by NCC Vice-President Mark Nye.  
It is reprinted here from a Post Card sent to Mark's Grandmother in 1916.

#### Membership Renewal Notice

This is your last issue of the *Crystal Ball*—if the date  
on your address label reads 12-87.  
*Please renew now!*

From your  
Officers, Board of Directors  
and  
CRYSTAL BALL Staff

# Cambridge Crystal Ball

Official publication of National Cambridge Collectors, Inc., a non-profit corporation with tax exempt status. Published once a month for the benefit of its members.

Membership is available for individual members at \$13 per year and additional members (12 years of age and residing in household) at \$3 each. All members have voting rights, but only one *Crystal Ball* will be mailed per household.

Back issues of the *Crystal Ball* are available (beginning with Issue No. 1, May 1973) for members only. Cost: 60 cents each or 12 issues for \$7.

## 1987-88 Officers & Committee Chairpersons

President	Willard P. Kolb
Vice-President	Mark A. Nye
Secretary	Janice Y. Hughes
Treasurer	William C. Smith
Sergeant-at-Arms	Marybelle Moorehead
Budget & Finance	David B. Rankin
By-Laws	J.D. Hanes
Convention	Mark A. Nye
Membership	Phyllis D. Smith
Museum	Billy F. Harbaugh
Program & Entertainment	Marlene K. Snyder
Project	Willard P. Kolb
Public Relations	William C. & Phyllis D. Smith
Publicity	Joseph Andrejcek
Study Group Advisor	Phyllis D. Smith
1988 Auction	Lynn M. Welker
1988 Antique Show	Joy R. McFadden
1988 Flea Market	Marybelle Moorehead
Crystal Ball Editor	Phyllis D. Smith

## Classified Advertising Rates

5 cents per word \$1.00 minimum

We cannot mix type size in classified advertisements. Abbreviations and initials will count as words. Payment in full must accompany all ads.

## Display Advertising Rates

(Camera-ready ads preferred)	Members	Non-Members
1/8 page (9 items)	\$ 4.00	\$ 6.00
1/4 page (20 items)	7.00	10.00
1/2 page (20 items)	12.00	18.00
3/4 page	17.00	25.00
Full page (50 items)	22.00	33.00

## Dealers Directory

Five-line maximum \$12.00 for 12 months

Cambridge *Crystal Ball* assumes no responsibility for items advertised and will not be responsible for errors in price, description or other information.

*Advertising copy, articles, club news and notices must be in our hands by the 10th of each month to assure publication in our next issue.*

Paid advertisements containing reproductions or new glass will not knowingly be accepted for publication.

Opinions or information stated in any signed article or letter printed in the *Crystal Ball* are those of the authors and may or may not agree with National Cambridge Collectors, Inc. The Editor reserves the right to refuse and to edit any material submitted for publication so as to conform with the editorial style of the *Crystal Ball*.

## Please Address All Correspondence to:

National Cambridge Collectors, Inc.  
P.O. Box 416 Cambridge, Ohio 43725

**President** — Willard Kolb, 614/695-0695

**Secretary** — Janice Hughes, 614/432-7823

**Editor** — Phyllis Smith, 513/323-3888

NCC Museum of Cambridge Glass is located on U.S. Route 40, one-eighth mile east of I-77 near Cambridge. Hours: 12 noon to 4 p.m., Wednesday through Sunday (March through October). Closed Easter and July 4th.

Please notify us immediately of any change in your address.

Please enclose an SASE when requesting information.

# CAMBRIDGE GLASS BOOKS FOR SALE

by National Cambridge Collectors, Inc.

\* **COLORS IN CAMBRIDGE GLASS**  
(128 pages - 60 color plates - fully indexed)  
Hardbound with Price Guide \$19.95

\* **1930-34 CAMBRIDGE GLASS CO. CATALOG REPRINT**  
(250 page reprint of original catalog)  
Hardbound with Price Guide \$14.95

\* **1949-53 CAMBRIDGE GLASS CO. CATALOG REPRINT**  
(300 page reprint of original catalog)  
Hardbound with Price Guide \$14.95

\* **1956-58 CAMBRIDGE GLASS CO. CATALOG REPRINT**  
(164 page reprint of original catalog)  
Paperback \$6.95

**1985 COMBINED PRICE GUIDE**  
for 1930-34 & 1949-53 catalog reprints Postpaid \$5.75

\*NCC MEMBERS ONLY: These publications are available at 10% discount - or all four (4) at one time for \$50.00.

by Bill & Phyllis Smith

**CAMBRIDGE GLASS 1927-1929**  
(66 page reprint of original catalog)  
Paperback with Identification Guide \$7.95

by Mark Nye

**CAMBRIDGE STEMWARE**  
(95 Stemware lines with 107 illustrations)  
Paperback \$14.95

by Cambridge Buffs Study Group

**NEARCUT**  
(108 page reprint of 1910 Cambridge Catalog)  
Paperback with Price Guide \$9.95

by Mary, Lyle and Lynn Welker

**CAMBRIDGE GLASS CO.**  
(120 pages of reprint from 8 old catalogs)  
Paperback \$6.95

**CAMBRIDGE GLASS CO. BOOK II**  
(119 pages of reprint from old catalogs)  
Paperback \$6.95

**CAMBRIDGE, OHIO GLASS IN COLOR II**  
Spiralbound \$5.95

by Harold and Judy Bennett

**1903 CAMBRIDGE GLASS CO. CATALOG REPRINT**  
(106 page reprint of an original catalog)  
Paperback \$7.50

Address your orders to:

**BOOKS**  
National Cambridge Collectors, Inc.  
P.O. Box 416  
Cambridge, OH 43725



Please add \$1.00 (P & I) per order.  
(Not required for Price Guide)

Ohio residents please add 6% state sales tax.

**DEALER DISCOUNTS AVAILABLE - PLEASE WRITE!**



THOUGHTS from your President . . .

## Christmas GREETINGS

Winter is upon us! We had the first snow fall of the season today. Makes you realize that Christmas is not too far away. There is still time for you to order from our Christmas Shopping list (page 15) and receive your items for Christmas giving.

The November Quarterly meeting was well attended and I think everyone enjoyed the program presented by David Adair, member of the Guernsey County Historical Society. His subject was "Railroads and Coal Mines of Guernsey County."

At the Director's meeting, prior to the Quarterly meeting, we decided to hold a Drawing to raise some much needed money. Tickets will be printed and a couple of pieces of Cambridge glass will be selected to be given away as a 1st and 2nd Prize. Ticket sales will be started around Auction time and continue until the Convention, at which time we will hold the Drawing.

Convention plans are well underway, with some changes being made. Mark Nye will explain these changes to you when he completes the Schedule of Events.

Also discussed at both meetings was the announcement by Collector's Books that the 1949-53 and 1930-34 Catalog Reprints will no longer be reprinted in hardback. The 1949-53 book is now completely "out of print," and it is not their intention to reprint at this time. Should they decide to reprint either or both of these books again, it will be with a paperback type cover. They will let us know their decision to reprint sometime during this next year, depending on the demand. As it stands now, we are out of the 1949-53 books and orders and checks are being returned to senders. We still have a supply of the 1930-34 books, so orders will be accepted for as long as they last. This is going to cut down on our income, so we will have to find ways to compensate for this. All other books on the Book List are still available. Remember, a book makes a wonderful Christmas Gift!

The Auction is not too far off. Start making plans now to attend! Lynn Welker has announced that the quality of glass for this Auction is the best ever. I think you will agree when you see the list that will be included in your January issue of the CRYSTAL BALL. The Auction is one of our big money raisers for the year, so try to attend and buy that fine piece of glass you have been looking for -- and help your Club at the same time.

Hope to see you at the February Quarterly meeting - Friday evening, February 26th, and the Annual All-Cambridge Glass Auction - Saturday morning, February 27th!

With all best wishes for "A MERRY CHRISTMAS and HAPPY NEW YEAR!"  
WILLARD

We extend Heartiest Greetings for the New Year  
to all those who have found this label  
one of Profit and Progress:



COMPLETE EXHIBIT OF 1935 LINES—  
WILLIAM PENN HOTEL—Rooms 1535 and 1536  
FROM JANUARY 7TH TO JANUARY 15TH

SATISFACTION comes from the sale of Quality Hand Made Wares and this company takes pride in the support of hundreds of forward-looking stores. We pledge further progress in 1935 and new shapes, new decorations and new novelties are in preparation.

We are thankful for the encouragement we have had and feel more certain than ever that Quality Wares will find an ever-broadening field.

**The Cambridge Glass Company**  
Cambridge, Ohio





# VASES

## PART I



by MARK A. NYE

Published in the September 1987 issue of the Cambridge CRYSTAL BALL was a reprint of eight "catalog" pages, illustrating and pricing Cambridge Vases. I place the term catalog in quotes since it is generally believed these and other similar pages covering other items and lines (many of which have previously been reprinted in the CRYSTAL BALL) are not from a complete catalog (such as the 1930, 1940 or 1949 catalogs), but rather are stand along materials issued individually. As to the date of publication, a bit of detective work will disclose this information.

First, note the trademark that appears on all except the first page - it still contains the "Triangle C." Since it is known a new trademark without the Triangle C was put into use in 1938, these pages date prior to 1938. Second, on the first page we find illustrations of Shell Line items, a line that was introduced in 1935; hence we have narrowed the possible time period to 1935-37. Careful examination of the pages reveals one of the colors listed as Moonlight, a color introduced by June 1936. Thus we can conclude the pages under discussion were in all probability issued in 1936 or 1937 with the latter date the more likely of the two.

An astute observer should notice the absence of Caprice vases even though the line was in production at the time these catalog pages were thought to have been published. The Caprice line was brought out in 1936 and numbered among its many items a wide selection of vases. At this time I have no explanation of their absence on these pages.

Before I go any further, let me say I have no intention of attempting to cover, in great detail, all of the Cambridge Vases. The sheer number of vases and the possible variations as to color, etching and other decorations would consume the CRYSTAL BALL for years to come. From the first catalog to the last, from the earliest of the Nearcut type lines to the styling of the 1950s, vases were a significant part of the Cambridge line.

For example, on the eight pages under discus-

sion, 86 vases are shown and listed. Thirty-nine of these were available etched and even though we don't know from these pages what etchings were available on what vases, it would probably be safe to assume many were available with more than one etching. Being conservative, let's say two per vase for a total of 78 etched vases. This makes for 164 vases, assuming production in crystal only; however, most of the vases shown were being made in more than one color. When the possible color combinations for all 86 vases are added up, we find we are now talking about 489 vases, not 86! This, plus the assumed 78 etched crystal items come to 567 different vases on these pages alone.

Since more detailed information regarding Cambridge production in 1940 is available, a rather precise figure regarding the total number of vases being offered can be calculated. Using the 1940 Catalog and price list, and counting all the possible combinations of color, etchings and other decorations except cuttings, buyers had 784 vases to select from! Note however, most of the vases shown in 1937 continued to be available in 1940; hence, we are not talking 784 plus 567, just that in 1940 there were at least 784 vases available. From these numbers the reader can gain an insight into the wide selection of vases Cambridge manufactured for its customers; as well as to the magnitude of the project it would be to provide, in detail, a complete history of Cambridge vases.

What I intend to do during the balance of this article and in the future, is to offer some general information on vases from the major lines along with the same type of information for several classes or types of vases not belonging to a major pattern line, an overview so to speak. This article, plus one to follow, will deal with vases shown in the September 1987 issue of the CRYSTAL BALL and the reader must use that issue for illustrations of vases under discussion. Page numbers will refer to the theoretical page number of the actual catalog section and not the number used in the CRYSTAL BALL.

The two vases shown directly beneath the heading on page 1, #79 and #80, date to at least 1920, if not before. They belong to a large grouping of somewhat similar items, stemmed and footed as well as flat, that were blown using paste molds. Shown in 1937 in

continued on page 6

VASES. . . . . continued from page 5

crown tuscan, other colors, transparent and opaque, were used for these vases during the 1920s and early 1930s, when they were available plain and decorated.

The Shell Line was brought out in early 1935, and in addition to the colors listed for 1937, the Shell flower holders may be found in windsor blue. Discontinued during the 1940s, some Shell molds including the #46 Flower Holder, were reactivated during late 1953 or early 1954 for use with the Milk Glass Line.

Three very familiar lines appear on page 2, namely Everglade, Mount Vernon and Martha Washington. The Everglade Line originated in the late 1920s and early 1930s without a line name, as well as having roots in such lines as LaFleur and Springtime. Four of six vases shown in 1937 remained in production into the 1940s; these being #38, #22, #21 and #20. Except for moonlight, production of Everglade vases in color ceased prior to 1940. At least four Everglade vase molds, #20, #21, #22, and #23, were removed from idle storage and used to produce milk glass during its limited production run in late 1953 and early 1954.

The Mount Vernon Line was brought out in 1931 and while some of the line was still in production as the 1950s dawned, the three vases had been dropped from the line sometime between 1940 and 1949.

First seen in the 1927 catalog as a part of the Centennial Line, the #18 Martha Washington tall footed vase (shown on the right) was revived and included in the reintroduction (under the name Heirloom) of the Line that occurred in 1953. The #17 fan style vase was produced in limited quantities in milk glass during late 1953 and early 1954.

Of the nine vases shown on page 3, six are from the #3400 Line introduced in late 1929 and early 1930. The remaining three, in shape at least, date back to the early-to-mid 1920s, if not before, even though at times different item numbers were being used. Except for #1297 and #1298, these vases were also illustrated in the 1940 Cambridge catalog. The 1949 catalog pictured the same three keyhole vases as well as #278 and #279 and these were being produced in crystal, amber and amethyst. Two keyhole vases, #1237 and #1238, along with the #278 11" footed vase, in crystal only, were offered in the final Cambridge catalog.

On page 4 we find nine vases from the #3400 Line, including three more keyhole stemmed items. All of these had a late 1929, 1930 or 1931 introduction and most were featured in crystal and color, plain and etched.

The 7" and 9" handled baskets date to the Nearcut years and the reader is referred to the recent series on baskets for details about these pieces (C.B. Issues #167, #169 and #173). The #272 and #274 vases were first seen in the early 1920s and production of the #274 continued until the final plant closing. What became known as the #272 (the shape had a different number in the 1920s) was dropped from the line during the mid-to-late 1940s. While production up through the early 1940s was in many colors, late production of these vases was limited first to amber, amethyst, and crystal, and then crystal only.

Probably the most spectacular Cambridge vase is the #1336 18" vase shown on page 5. First seen on a catalog page dating to 1933 where it was shown decorated in two ways, etched Diane and engraved Achilles or #698, this vase by 1940 was being offered etched Elaine, Diane, Portia, and Rose Point, as well as engraved Achilles. Production of this vase, sometimes referred to as a floor vase, ceased during the 1940s. Reading the fine print we discover that in 1937 the #1336 vase was made in crystal, forest green, royal blue, amethyst and carmen. By 1940, however, production of this item was limited to crystal and royal blue.

As stated earlier, this series is simply an overview of Cambridge vases. If any reader desires more specific information on any given vase or vases, please contact me thru the CRYSTAL BALL, and as time permits I will provide what additional information I have available or can find.

In closing, I would like to take this opportunity to wish each and everyone . . . . .

**Happy Holidays, Merry Christmas  
and Happy New Year.**

As part of your decorations, use the #1336 floor vase filled with evergreens!

to be continued . . . . .

---

**Back issues mentioned in this article may be  
ordered from NCC, Inc., for \$1 each.**

---

# Start a Christmas Tradition

by MARK A. NYE

"NEARCUT" DESIGN 2656 PLAIN.



Cream



Handled Sugar and Cover



Handled Spoon



Butter and Cover

Since the theme of the 1987 Convention was the Nearcut Era, several articles this year have dealt with the subject; and at the risk of repeating what has been previously published or discussed, I would like to close the year with one more short discourse on two Nearcut Era patterns. These two are quite appropriate to the Christmas Season as they both feature what to many eyes is a "Star."

The #2656 Line, dating to 1908, was described by Cambridge as a star pattern and as a sunburst. This pattern is known to Pattern Glass collectors as Star of Bethlehem. As seen in the illustrations this design consists of what clearly is a star with either six or eight points and associated rays. In addition to the usual table set, nappies and comports, the Star pattern also includes a punch bowl and a full line of stemware and tumblers. The #2656 line was discontinued prior to 1920. A table set with this pattern would be most impressive, but it is unlikely a set could be assembled today as not much is seen.

Named "Star with Handle" by Pattern Glass collectors, pattern #2729 apparently was never named by Cambridge. A small line, along with the usual table set and nappies, it did include a square vase, two round vases, basket, tankards, tumbler, etc. Production years for this line are approximately 1910 to 1921. Note that this pattern has a 12 point star, including the point that serves as the "handle" and this, as well as other design features, distinguish it from the preceding pattern.

Start a Christmas Tradition by using whatever pieces you may have of these patterns during this 1987 Holiday Season and in the years to come. The celebration of Christmas is deeply rooted in tradition and what better way to celebrate than to use a favorite piece of Cambridge . . . one appropriate to the Season!.

TRADE  
"Nearcut"  
MARK

NO. 2729 PATTERN.



No. 423  
6 1/2 inch Vase



No. 424  
6 3/4 inch Vase



No. 425  
6 1/4 inch Vase



No. 113  
5 inch Comport



No. 215  
Quart Jug  
Tankard.



No. 215  
1/2 Gal. Jug, Tankard



---

# Club News

---

National Cambridge Collectors, Inc.  
Quarterly Meeting  
November 7, 1987  
The Upstairs, Cambridge, Ohio

The meeting was called to order at 8:25 p.m. by President Kolb. In attendance were 11 Board members and 40 club members and guests.

The minutes of the previous meeting held on August 8, 1987 were read by Janice Hughes and approved.

The Treasurer's report was given by Bill Smith showing the checking account balance is \$1,167.94 and the Money Market balance is \$12,316.49. Balance due on the mortgage is \$2,424.31. He also reported he has only received three photos suitable for using for the post cards. He asked if anyone had any ideas for fund raising to contact him.

## COMMITTEE REPORTS

**BY-LAWS:** Chairman J.D. Hanes reported a proposed change in the Constitution will be published in the CRYSTAL BALL and voted on at the Annual meeting.

**CONVENTION:** Chairman Mark Nye reported the theme will be "Cambridge, The 1950s." Frank Fenton will be the banquet speaker. Glass from the 1950s will be needed for the Display room. A list will be in the CRYSTAL BALL. The Antique Show will be open from 5 p.m. until 8 p.m. on Friday evening with a cold plate dinner following.

Mr. Nye reported that Mr. Andy Anderson, a former Cambridge Glass Company employee and a NCC Convention Speaker passed away on Easter Sunday.

**MEMBERSHIP:** Chairman Phyllis Smith reported we now have 1213 members.

**CRYSTAL BALL:** Editor Phyllis Smith reported she hasn't received any complaints.

**MUSEUM:** Chairman Bill Harbaugh reported the Museum is closed for the winter and will reopen Auction weekend.

All the gauges were cleaned, inventoried and labeled this summer by Cindy Arent, Judy Momirov, J.D. and Doyle Hanes. Bill Smith and Clarke West are cleaning the etching plates.

**AUCTION:** Chairman Lynn Welker stated this will be the finest auction we have ever had and encouraged everyone to attend.

**NEW BUSINESS:** President Kolb announced the Nominating Committee as follows:

Bill Smith, Chairman, Springfield, Ohio  
Cindy Arent, Cambridge, Ohio  
Rich Bennett, Cambridge, Ohio  
Carl Beynon, Cambridge, Ohio

He also stated at the February Quarterly meeting the floor will be open for nominations, but be sure to have the nominees permission.

President Kolb reported the 1949-53 Catalog Reprint is sold out and the publisher will not print it again in hardback, but may in soft-back next year. If he doesn't, we will seek another publisher.

Frank Wollenhaupt suggested hiring a professional to photograph the Museum and glass for the post cards. Janice Hughes will check with the local photographers.

President Kolb reported we will hold a raffle for two pieces of glass with the drawing to be at the Annual meeting.

A blue collectors plate was donated by Everett Patterson and bought at Mini-Auction by Evelyn Coulter for \$20.

A motion was made by Mark Nye to adjourn at 8:50 p.m. Motion carried.

Lynn Welker presented Show & Tell.

David Adair presented an interesting and informative slide program on Railroads and Coal Mines of Guernsey County.

The next meeting will be held on February 26, 1988.

Janice Y. Hughes, Secretary







Portrait by John Trumbull  
in U. S. National Museum

# MARTHA WASHINGTON GLASSWARE

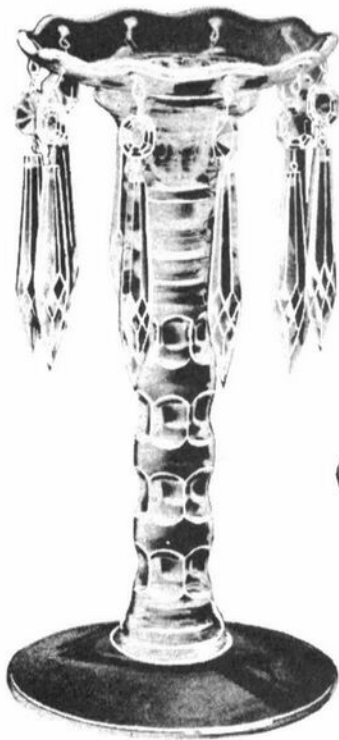
*Early American  
Reproduction* by



# MARTHA WASHINGTON EARLY AMERICAN GLASSWARE OF FINEST QUALITY AND DESIGN



Our Label On Each Piece

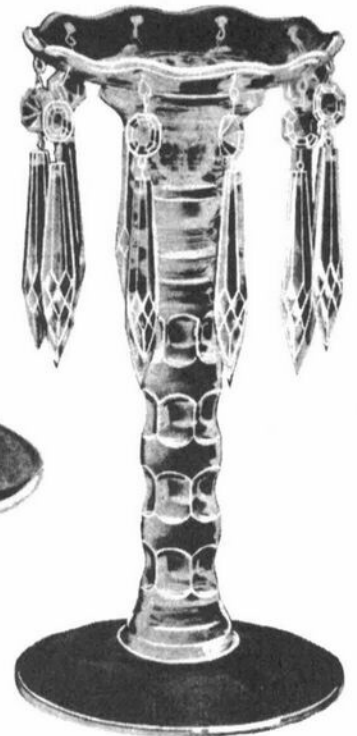


**1269**  
10 in. Candlestick,  
with Crystal Bobeche and Prisms  
With No. 1 Prisms  
\$47.50 Doz.



**25**  
10½ in. Bowl flared  
\$16.50 Doz.

3 pc. set \$9.30 per set



**1269**  
10 in. Candlestick,  
with Crystal Bobeche and Prisms  
With No. 1 Prisms  
\$47.50 Doz.

The beautiful Martha Washington Glassware made by the Cambridge Glass Company is a reproduction from the Early American patterns—and is especially exemplified in this brilliant Crystal Console set illustrated above.

# MARTHA WASHINGTON



**71**  
5 in. Ftd. Candy Box and Cover  
\$9.90 Doz.



**43**  
7 in. 3-comp. Candy Box and Cover  
\$16.50 Doz.



**1**  
Sugar and Cream, Ftd.  
\$16.50 Doz. Prs.



**52**  
Fingerbowl  
\$3.95 Doz.



**53**  
Fingerbowl Plate  
\$3.95 Doz.



**57**  
5 1/4 in. Fruit Saucer  
\$3.85 Doz.



**42**  
Cup and Saucer  
\$7.50 Doz.



**76**  
Salt and Pepper with Glass Top  
\$8.25 Doz. Prs.



**19**  
Sugar and Cream  
\$18.00 Doz. Prs.



**14**  
Sugar and Cream  
\$10.50 Doz. Prs.



**30**  
80 oz. Jug, Crys. Hld.  
\$20.60 Doz.



**17**  
7 1/2 in. Fan Vase  
\$16.50 Doz.



**41**  
9 1/2 in. Covered Urn  
\$16.50 Doz.



**39**  
10 in. Covered Urn  
\$16.50 Doz.

These Prices are for Crystal and Represent High Retail Prices—this Line is also made in Amber, Royal Blue, Forest Green and Ruby as well as the Modern Colors of Gold Krystal and Heatherbloom—See separate Price List



Our Label On Each Piece

*The* **CAMBRIDGE GLASS COMPANY**

**CAMBRIDGE, OHIO.**

**INCORPORATED 1901**

« « Permanent Displays and Sales Offices » »

**THE CAMBRIDGE GLASS COMPANY,**  
184 Fifth Avenue,  
**NEW YORK, N.Y.**

**THE CAMBRIDGE GLASS COMPANY,**  
Room 1547-The Merchandise Mart  
**CHICAGO, ILLINOIS**

**A. H. RENWICK,**  
946 South Flower Street  
**LOS ANGELES, CALIFORNIA**

**JOHN A. NIXON,**  
924 Filbert Street, - 2nd Floor,  
**PHILADELPHIA, PA.**

**A. L. INGALLS,**  
401-2 Insurance Bldg.,  
**DALLAS, TEXAS**

**W. A. SONGSTER,**  
1601 Emerson St.,  
**DENVER, COLO.**



# **1988 CONVENTION**

JUNE 23 - 24 - 25 - 26, 1988

by MARK A. NYE  
1988 NCC Convention Chairman

Tell me it isn't true. I can't really be talking about the 1988 Convention since just yesterday, it had to be yesterday, I finished work on the 1987 Convention!

With Christmas 1987 just weeks away, June 1988 will be here before the last evergreen needle is removed from the carpeting. I have a friend who delights in closely examining my carpet in late spring or early summer with every intention of finding that stray pine or spruce needle I missed. Enough! I digress from the intended purpose of this article.

Planning for the following year's convention does start soon after the close of the current year's event and this year was no exception. At this time I am pleased to be able to make two announcements regarding what will be our 15th Annual Convention.

First, the theme for the 1988 Convention will be:

**CAMBRIDGE and THE 1950s!**

Second, it is with great pleasure that I announce our 1988 Banquet speaker will be Frank Fenton, of the Fenton Art Glass Company.

We will be needing Cambridge glass from the 1950s for our Display room. In addition, perhaps a display of other types of goods from the 1950s would also be a possibility if members would be willing to contribute. Your ideas on this would be appreciated. Drop me a line in care of the CRYSTAL BALL, P.O. Box 416, Cambridge, OH 43725.

Again, the topic for the Saturday morning program will be some aspect of the Convention theme. If any member would like to present a program to the membership on Saturday morning, or at any other time during the convention, please get in touch with me as soon as possible. Without the help of the membership, a successful convention is not possible.

Once again we will have the Convention Chairman's Reception on Thursday evening. It proved to be a popular event this past June and it will be retained in the same format, i.e. no structured program.

There is a possibility there may be some restructuring of the entire Convention Weekend. Watch this space in January for details.

Regardless, the 15th Annual National Cambridge Collectors Convention will be the best ever.

**CAMBRIDGE or BUST - JUNE 1988**



## In Memoriam

*"Gone unto that land whose peaceful shore, There rests no shadows, falls no stain; Where those who meet shall part no more, and those long parted meet again."*

ARVID W. "ANDY" ANDERSON  
1909 - 1987

It is with deep sorrow that we belatedly report to you the untimely death of our good friend Andy Anderson. He died of congestive heart failure on Easter Sunday.

Mr. Anderson was a Cambridge Glass Company Sales Representative, covering the upper midwest area of the United States, for nearly twenty-five years. He became a member of N.C.C. in 1980. We were privileged to make his acquaintance when he came to Cambridge to speak to us during our June 1981 Convention, on the subject of "Cambridge Arms." In 1955, Andy was awarded 1st Prize in the 5th Annual Hess Brothers Versatility in Design and Use contest, for his use of the Cambridge Arms.

National Cambridge Collector's extend their sympathy to Andy's wife of more than fifty-five years, Nan, their two sons Arvid Jr. and Tom, their four grandchildren, and other family members.

"May it be of some small comfort for you to know that others care."

---

## Study Club News

---

STUDY GROUP #7 - EASTERN OHIO  
"THE CAMBRIDGE BUFFS"  
Phone: 614/432-5230

The Cambridge Buffs Study Group held their meeting August 2nd, in the home of Doris and Roy Isaacs, Norwalk, Ohio. There were nine members and one guest present. Program for this meeting consisted of studying various patterns and their references in available Cambridge books.

On September 6th they met in the home of Charles and Mary Alice Upton, Cambridge, Ohio. There were eight members present.

Charles gave a quiz on pictures and glassware from six different glass companies.

On October 24th the Buffs met once again in the home of Lena Barnes. There were nine members and one guest present. Lena led the group in a quiz using the new Degenhart Glass Book of Guernsey County.

Richard Bennett showed and discussed the many pieces of Nearcut glass that were displayed. There were such items as: Strawberry miniature sugar; Archfoot Daisy cup, sugar, candy and shakers; Marjorie bowls, cups, cream & sugar, napkin holder, knife rest; Fernland toothpick and dish; Radium comport; and amber carnival ladies cuspidor.

Our next meeting will be in the home of Mr. & Mrs. Thomas Gray.

submitted by Deanne Gray

---

STUDY GROUP #8 - SOUTHERN MICHIGAN  
"THE MICHIGAN CAPRICES"  
Phone: 313/655-4703

The Michigan Caprices met May 8th, at the home of Lee and Martin Coppo.

Lee read an interesting article about Cambridge Glass from an April 13, 1980 Columbus Dispatch Sunday Magazine. On the front page of this section was a large colored photograph of a tall handled glass and pitcher beverage set. It was made in Rubina, and at that time was valued at \$1,400. What a beauty! Wonder what the set would be today?

Lee had some lovely new pieces of Diane to show us. A milk glass W104 9" comport. A piece of old china was shown from a complete set that was purchased specifically to compliment some beautiful stemware. One piece I especially enjoyed seeing was a very unusual and beautiful four handled Nearcut vase. We spent sometime finding exact patterns that this piece matched with. You can be sure this piece will be going to the Convention with one of the three of us who will be able to attend.

submitted by Phyllis Hayes

---

(Editor's Note: My apologies to the Caprices for the lateness of this report. It was lost in the shuffle when I was ill before Convention and has just now surfaced once more.)

---

# N. C. C. CHRISTMAS SHOPPING SUGGESTIONS

Earliest postmarks will determine purchaser in case of insufficient quantities.

## BOOKENDS

- #1129 LION, Amber, Second of the Museum Reissue Series.....\$38.00  
(Add \$3.00 P. & H. - Ohio residents add \$2.09 tax)
- #1129 LION, Amber Frosted, Special Treatment Item.....\$75.00  
(Add \$3.00 P. & H. - Ohio residents add \$4.13 tax)
- #1128 SCOTTY, Black Frosted, Third of the Museum Reissue Series...\$30.00  
(Add \$3.00 P. & H. - Ohio residents add \$1.65 tax)
- #1119 EAGLE, Cobalt Blue, Fourth in the Reissue Series.....\$30.00  
(Add \$3.00 P. & H. - Ohio residents add \$1.65 tax)

## CONVENTION FAVORS

### Paperweights

- 1980 - Windsor Blue with Club Logo and Date.....\$16.00  
(Add \$1.50 P. & H. - Ohio residents add \$.88 tax)
- 1982 - Gold Krystol with Club Logo and Date.....\$14.00  
(Add \$1.50 P. & H. - Ohio residents add \$.77 tax)

### Georgian Tumblers, 2½ oz.

- 1983 - Cobalt Blue, Marked "10th Anniversary 1973 N.C.C.-1983"....\$18.00  
(Add \$1.50 P. & H. - Ohio residents add \$.99 tax)
- 1984 - Pink, Marked "N. C. C." no date.....\$12.00  
(Add \$1.50 P. & H. - Ohio residents add \$.66 tax)
- 1985 - Amber, with Club Logo and Date.....\$14.00  
(Add \$1.50 P. & H. - Ohio residents add \$.77 tax)
- 1986 - Gold Krystol, with Club Logo and Date.....\$14.00  
(Add \$1.50 P. & H. - Ohio residents add \$.77 tax)

## CUP PLATES

- Crystal & Cobalt (limited numbers); Amethyst; Teal.....(ea)...\$7.00  
(Add \$1.00 P. & H. - Ohio residents add \$.39 ea. tax)

## CAMBRIDGE GLASS COMPANY STOCK CERTIFICATES

- These are original certificates suitable for framing.....(ea)...\$5.00  
(Price includes mailing - Ohio residents add \$.28 ea. tax)

## BOOKS

See BOOK LIST on page 2 for additional suggestions

National Cambridge Collectors, Inc.  
P.O. Box 416  
Cambridge, OH 43725



## — Classified —

**WANTED TO BUY:** Stopper for Cambridge Barrel Set. **R. Clarke West**, 3433 Turner Dr., Springfield, OH 45504. Phone: 513/390-3617.

**FOR SALE:** #3122 Diane etched: 7 1/4" Goblets (11) \$25 ea.; 5" Juices (12) \$20 ea.; Sherbets (8) \$20 ea.; 6 1/4" Underplates (5) \$12 ea. **Barbara Jennings**, 134 Garden Parkway, Henrietta, NY 14467.

**BUYING:** Moonlight Caprice or Rosepoint by Cambridge; Rose or Orchid by Heisey; & June, American, Fairfax, Versailles, Trojan, etc., by Fostoria. **Nadine Pankow**, 207 South Oakwood, Willow Springs, IL 60480. 312/839-5231.

**WANTED:** Nearcut Colonial #2750 Helio 7" Candlestick (ref: page 97, Nearcut Reprint by Cambridge Buffs). Also wanted: Community #2800 Helio one gallon Ewer to go with #2800 Basin (ref: #234, page 107, Cambridge Glass Co. Book I by Mary, Lyle & Lynn Welker). **Bill and Pam Earussi**, 889 Stonybrook Lane, Lansdale, PA 19446. 215/855-5423.

**WANTED:** Dark Emerald (Forest Green) Martha Washington. Also: Nearcut Marjorie and individual Nut Dishes (any era/color). Please state price, piece(s), and condition. Thanks! **Elaine Storck**, 6731 Maple Dr., Rockford, MN 55373.

**FOR SALE:** "Cambridge" amethyst Luncheon Set. Original owner, purchased in early 1950s. 12 solid amethyst 6-sided 8" plates; 10 champagne glasses; 12 wine glasses. Stemware has solid amethyst bowl with clear crystal stem & base. Center of stem has large crystal ball. Price \$700.00. **Barbara Douglass**, 8137 So. Francisco, Chicago, IL 60652. 312/436-6026.

**TAKE 10% OFF:** All items left from October 1987 Ad. **Betty J. Anonby**, Crystal Matching Service, Rt. 2, Box 58A, Kenyon, MN 55946.

**WANTED:** Info/pricing on Cambridge clear or colored Hunt Scene pattern! **R. Tillerson**, 3618 Coltwood Dr., Spring, TX 777388. 713/651-5111



To Our Friends,

In the spirit of the season, we wish you every happiness during the holidays and may all good things be yours in the New Year!

Warmest Regards,  
Clarke and Carole West

TASTE of HONEY  
3433 Turner Drive  
Springfield, OH 45504  
513/390-3617

## SPRINGFIELD Antique Show & Flea Market

Clark County Fairgrounds

## SPRINGFIELD, OH

Exit 59 on I-70

400-800 DEALERS

INSIDE AND OUTSIDE

Ohio's largest year round show with an  
emphasis on quality antiques

9:00 AM - 5:00 PM

Admission \$1.00 per Weekend

Children under 12 FREE

NEXT SHOW

DEC. 12-13 Inside

### 1988 SHOW DATES

JAN.	16-17
FEB.	20-21
MAR.	19-20
APR.	16-17

BRUCE KNIGHT, MGR.

For Information Write  
P.O. Box 2429, Springfield, OH 45501  
Phone (513) 325-0053



**COLUMBUS ANTIQUE  
FLEA MARKET  
(ANTIQUES & COLLECTIBLES)**

Ohio State Fairgrounds - Lausche Building  
Off I-71 Exit 17th Avenue - Columbus, Ohio

**DECEMBER 13th**

Sunday Only - 7 A.M. to 4 P.M.  
Show Admission \$1.50 - Under 12 Free  
150 QUALITY DEALERS



SELLING: Advertising Art Deco, books, Cambridge, clocks, coins, collectibles, Depression glass, dolls, Fiesta, fine early furniture, Heisey, jewelry, lamps, oak furniture, post cards, pottery, good primitives, tools and print shop items



4214 North High Street, Columbus, Ohio 43214  
(614) 267-8163 (614) 263-6830 (614) 885-2352

NEXT SHOW: January 10, 1988

**The DAZE**

★ SPECIAL OFFER  
to NCC friends  
\$2. off the 1 year  
subscription price,  
when on this form  
or copy of.

The Original, National monthly newspaper dedicated to the buying, selling & collecting of colored glassware and china including Depression Glass and the Elegant Glass (Cambridge, Heisey, Fostoria etc.) We educate and inform you each month with feature articles by top notch columnists, readers "finds", club happenings, show news and a multitude of ads. Find those missing pieces to your 30s, 40s or 50s pattern. Can't identify it? Perhaps we can help. "Keep up with what's happening with a subscription to the DAZE. Buy, sell or trade from the convenience of your easy chair.

Name \_\_\_\_\_ Street \_\_\_\_\_

City \_\_\_\_\_ State \_\_\_\_\_ Zip \_\_\_\_\_

1 yr. \$15.00  2 yrs. \$29.00  \$1.75 single current copy  
 Check enclosed  MasterCard  Visa

Exp. date \_\_\_\_\_ Card No. \_\_\_\_\_

Signature \_\_\_\_\_

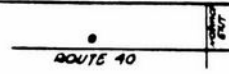
**Orders to D.G.D., Box 57NC, Otisville, MI 48463**

Please allow 30 days for your first issue— Canadian subscribers, add \$1. per year and subscribe by charge card only! This Special Offer May Not Be Combined With Other Special Offers

WELCOME TO GLASS COUNTRY!

I-70

STOP AND SEE US



WE FEATURE GLASSWARE OF:  
CAMBRIDGE, HEISEY, FENTON & FOSTORIA

Plus a full line of Art Pottery and a General line of Quality Antiques

*Stage Coach  
Antique Mall*

RT. 40, ONE-HALF MILE WEST OF I-70 NORWICH EXIT #164  
MANY DEALERS-WIDE SELECTION-PLENTY PARKING

DORIS AND ROY ISAACS  
BUY AND SELL  
614-872-3720



7525 EAST PIKE  
NORWICH, OHIO 43787

MON THRU SAT 10-5:30 SUN 12-5:30  
SUMMER EVENING HOURS BY CHANCE

MANY DEALERS - PLENTY OF PARKING

# JOHN & LENORA McNABB

9730 N. Lydia Avenue Kansas City, MO 64155  
(816) 734-2373

## #3011 NUDE STEMS

Banquet Goblet: emerald green..\$	175
Champagne: amethyst, amber..ea.	110
Table Goblet: amethyst, green.....ea.	100
Table Goblet: smoke crackle....	600
Hock: crystal.....	200
Roemer: topaz.....	350
Claret: carmen.....	90
Claret: amethyst, amber.....ea.	80
Cocktail: crystal, gold, green, amethyst.....ea.	70
Cocktail: pistachio on 4½" stem, RARE.....	225
Brandy: amethyst, amber, green, gold.....ea.	70
Ash Tray: amber, dk. green..ea.	175
Cigarette Box, short stem: amethyst, green.....ea.	185
Cigarette Box, short stem: crown tuscan.....	200
Cigarette Box, tall stem: amethyst.....	310
Flared Comport: royal blue....	135
Cupped Comport: crystal.....	75
Ivy Ball: crystal.....	80
Ivy Ball: crown tuscan.....	175
Flying Lady: crown tuscan.....	140
Candlesticks, #1438: crown tuscan sticks & vases, crystal arm & bobeches, picture available RARE & ELEGANT.....pr.	700

Have other NUDE ITEMS, please  
write for list!

## IVY BALLS

#1236: amethyst, green.....ea.\$	25
#1006: amethyst.....	25
#1066: carmen.....	30

## WANTED!

#3011 NUDE STEMS:  
Cordial, royal blue  
Roemer, royal blue  
Cigarette Holder, carmen  
Any crackle stem



## CAPRICE VASES

#337 Straight Top: royal blue..\$	55
#338 Straight Top: royal blue..	65
#339 Straight Top: amethyst, amber.....ea.	90
#340: crystal.....	100
#341 Straight Top: green, amber.....ea.	45
#342 Straight Top: amethyst....	65
#343 Straight Top: amethyst, green.....ea.	90
crystal.....	75
#344 Straight Top: royal blue..	55
#345 Straight Top: moonlight...	70
Milk Glass: W124, W125.....ea.	50

## MISCELLANEOUS

#1114: 6" Bashful Charlotte flower holder, green.....\$	75
#3400/144 Cigarette Holder: amethyst.....	40
carmen.....	65
Comport: 8½" low footed, rubina.....	70
Modern Pattern Covered Candy: smoke.....	45
#1034 8½" Swan: signed; mandarin gold.....	85
signed, pink.....	95
#1034 8½" Swan: crystal.....	45
#3450: 8½" Perfume, glass stopper, carmen.....	50
#3450: 14 oz. Decanter, amber..	20
#3450: 28 oz. Decanter, amber..	25
#3450: 18 oz. Decanter, amethyst.....	25
#3450: 40 oz. Decanter, green..	35
#663: Candelabra.....pr.	30
#1545: 5½" 3-lite Candelabra without bobèche.....	15

ALL ITEMS GUARANTEED. WILL SHIP  
IMMEDIATELY, IN TIME FOR CHRISTMAS!  
UPS EXTRA



# DEALERS



# DIRECTORY

NOTE: When writing to the Dealers listed here, please enclose a SASE!

<p><b>MILBRA'S MATCHING SERVICE</b> P.O. Box 363, Rio Vista, TX 76093 Milbra Long 817 / 645-6066 FOSTORIA * CAMBRIDGE * HEISEY * DEPRESSION ERA GLASSWARE BUY and SELL</p>	<p><b>BENICIA ANTIQUE SHOP</b> 305 First Street Benicia, California 94510  OPEN 11 AM - 5 PM Closed Monday Z. E. LOPES 707-745-0978</p>	<p><b>THE MUTED SWAN ANTIQUES</b> 5486 Peachtree Rd. Chamblee, GA 30341 Heart of Chamblee Antique Row Specializing in Cambridge, Heisey and Fostoria Bill &amp; Pat Miller 404-451-7620</p>
<p><b>ANDREJCAK'S ANTIQUES</b> 14533 Bayes Ave. Lakewood, Ohio 44107 Joe &amp; Karen Andrejak 216-226-3417 SHOWS ONLY — CAMBRIDGE — FENTON — CHINA</p>	<p>VISIT HISTORIC BENICIA and its 28 shops Off Interstate #80 ..... ..... North of San Francisco</p>	<p>SPECIALIZE IN CAMBRIDGE GLASS &amp; ANTIQUES <b>DOYLE L. BYINGTON</b> 553 Sanchez Street, San Francisco, CA 94114 415/621-1854  Shows: Mail-Order - Buy &amp; Sell - By Appointment</p>
<p><b>BOGART'S ANTIQUES</b> Stagecoach Mall, Building #2 Norwich, OH 43767 ..... Jack and Sharon Bogart 614/826-7439 and 614/872-3514 ..... BUY - SELL - APPRAISE - REFINISH SEAT WEAVING - CLOCK REPAIR COPPER &amp; BRASS POLISHING GENERAL LINE CAMBRIDGE GLASS</p>	<p><b>ANTIQUES ON THE MALL</b> SPECIALIZING IN CAMBRIDGE GLASS Stagecoach Mall - Bldg. 3 - Norwich, OH Virginia Bennett 614/432-4483 64183 Warne Drive, Cambridge, OH 43725</p>	<p><b>BERKELEY ANTIQUES</b> 69 Berkeley St., Boston, MA 02116 OPEN: Monday thru Saturday 11 AM to 5 PM GEORGE &amp; FRANK 617/426-1048 DUNCAN, CAMBRIDGE, HEISEY, GENERAL LINE</p>
<p><b>THE GLASS CUPBOARD</b> 39 Shire Oaks Drive Pittsford, New York 14534 Marcia Ellis Cambridge, Duncan Miller (716) 586-7596 Shows, Mail Order, Appt.</p>	<p><b>JUDY'S ANTIQUES</b> Judy Bennett 422 S. Ninth Street (Corner of Jefferson) Cambridge, Ohio 43725 BUYING Ph. 614-432-5855 SELLING Cambridge Glass my Specialty</p>	<p>"Happiness Is" - The Stultzs 3106 Warren Court, Glen Allen, VA 23060 Shows and Mail (Richmond Area) 804/262-1273 GLASS CIRCA 1890-1960</p>
<p><b>PEG AND DALE GOTSCHALL</b> Antiques, Cambridge and Other Quality Glass 833 N. 6th St., Cambridge, Ohio 43725 Phone 614/432-5529 Stagecoach Mall — Bldg. 2 — Norwich, Ohio</p>	<p><b>GREEN ACRES FARM</b> 2678 Hazelton Etna Rd., Pataskala, OH 43062 (State Route 310 North) Sat. &amp; Sun. 1-7 PM 614/927-1882 Antiques, Crystal Glass and Collectibles</p>	<p><b>MOSTLY HEISEY</b> 16 Clayton Place, Albany, NY 12209 Rhoda Curley 518 / 482-6272 SHOP and MAIL ORDER</p>
<p><b>THE HITCHING POST</b> 7467 S. R. 88 Ravenna, OH 44266 Ph. 216-296-3686 D. McDaniel CAMBRIDGE — HEISEY — GENERAL LINE</p>	<p>BUY-SELL 513/390-3617 <b>Taste of Honey</b> Glassware—Collectibles CLARKE &amp; CAROLE WEST 3433 Turner Dr. Springfield, OH 45504</p>	<p><b>1886 HOUSE</b> East Schodack, N.Y. 12063 MAIL and SHOWS Laurie Cruise 518-477-5895 CAMBRIDGE - NORITAKE - AZALEA - D.G.</p>
<p><b>L &amp; M ANTIQUES</b> 1331 S.E. 4th Ave., Pompano Beach, FL 33060 Lydia &amp; Cliff McNeil 305/943-2274 CAMBRIDGE &amp; FOSTORIA OUR SPECIALTY Buy &amp; Sell Shows Only</p>	<p><b>REMEMBRANCES</b> 7597 Daphne Dr., No. Syracuse, NY 13212 Shirley S. Ladouceur 315 / 458-5297 ANTIQUES and COLLECTIBLES MAIL ORDER SHOWS APPOINTMENTS</p>	<p><b>MARGARET LANE ANTIQUES</b> 2 E. Main St., New Concord, OH 43762 Lynn Welker 614/826-4418 CAMBRIDGE GLASS MATCHING SERVICE Hours Mon.-Fri. 1-5 PM or by Appointment</p>
<p><b>THE GLASS URN</b> 456 West Main Street, Suite G. Mesa, AZ 85201 602 / 833-2702 Mail Order Shows Open Shop CAMBRIDGE, FOSTORIA, HEISEY, ETC.</p>	<p><b>AL STEELE</b> Westerville, Ohio 614-882-6483 or 614-882-7124 Mail Orders and Shows Only HEISEY — CAMBRIDGE — PATTERN GLASS</p>	<p><b>BUD'S TRADING POST</b> GENERAL STORE — FLEA MARKET 501 Wheeling Ave. Cambridge, OH 43725 10-5 Mon. thru Sat. 614-432-4688 CAMBRIDGE - PATTERN - ART GLASS This Bud's for Y'all</p>



# National Cambridge Collectors, Inc.

P. O. Box 416, Cambridge, Ohio 43725

*A nonprofit organization dedicated to the preservation and study of Cambridge Glass*



## NATIONAL CAMBRIDGE COLLECTORS, INC.

You Are Cordially Invited  
To Become A Member Of The

Benefits derived from membership include: receipt of our club publication The Cambridge CRYSTAL BALL, informative Quarterly Meetings, Antique Shows, Auctions, and other special events.

The CambridgeCRYSTAL BALL is published the first of each month. This newsletter contains educational and interesting articles, questions and answers, information on reproductions and reissues, notices of all club functions, classified advertisements, dealers directory, and many other features of interest to collectors of Cambridge Glass.

Yearly dues are \$13.00 for Individual Members and \$3.00 for each Associate Member. All members have voting rights but only one issue of the CRYSTAL BALL will be mailed per household.

Name (please print) \_\_\_\_\_ \$13.00

Mailing Address \_\_\_\_\_

City \_\_\_\_\_ State \_\_\_\_\_ Zip \_\_\_\_\_

Associate Members (Must be at least 12 years of age and living in the same household.)

1 Name \_\_\_\_\_

2 Name \_\_\_\_\_

3 Name \_\_\_\_\_

Total number of Associate Members \_\_\_\_\_ @ \$3.00 each ..... \$ \_\_\_\_\_

TOTAL AMOUNT ENCLOSED \$ \_\_\_\_\_

Please make check payable to NATIONAL CAMBRIDGE COLLECTORS, INC.

Recommended by \_\_\_\_\_

A "GIFT of MEMBERSHIP in N.C.C." is a gift that is sure to be appreciated every month, all year long. Send us your list, and we'll send a card in your name to reach everyone in time for Christmas!

## 1988 AUCTION

Saturday, FEBRUARY 27, 1988  
THE SHENANDOAH INN  
Old Washington, Ohio



*May your home  
be filled with  
love and happiness  
during this  
joyous holiday season.*

Merry Christmas!

National Cambridge Collectors, Inc.  
P. O. Box 416 Cambridge, Ohio 43725

FIRST CLASS MAIL  
U.S. POSTAGE  
**PAID**  
So. Vienna, Ohio  
45369  
Permit No. 15

**FIRST CLASS MAIL**

