


Cambridge Crystal Ball

Published monthly by the National Cambridge Collectors, Inc.
to encourage and report the discovery of the elegant and boundless product
of the Cambridge Glass Company of Cambridge, Ohio

Issue No. 180

April 1988



1988 AUCTION - BEST EVER!

Prices realized during the 1988 Auction covered a wide range. From a low of \$3 for a #1715 mandarin gold Ashtray, to a high of \$925 for an extremely lovely pair of #1307 3-lite Candlesticks in royal blue with the elusive Japonica decoration.

Prices realized from a few of the crown tuscan items pictured above were: 8" Dolphin Candlestick \$80; 10" Urn and cover \$100; 6" Globe Vase w/Portia etch and acid signature \$130; Eagle Bookend \$325; and Tombstone Bookends \$175.

(See pages 10 and 11 inside, for additional Auction Results information)



Cambridge Crystal Ball

Official publication of National Cambridge Collectors, Inc., a non-profit corporation with tax exempt status. Published once a month for the benefit of its members.

Membership is available for individual members at \$13 per year and additional members (12 years of age and residing in household) at \$3 each. All members have voting rights, but only one *Crystal Ball* will be mailed per household.

Back issues of the *Crystal Ball* are available (beginning with Issue No. 1, May 1973) for members only. Cost: 60 cents each or 12 issues for \$7.

1987-88 Officers & Committee Chairpersons

President	Willard P. Kolb
Vice-President	Mark A. Nye
Secretary	Janice Y. Hughes
Treasurer	William C. Smith
Sergeant-at-Arms	Marybelle Moorehead
Budget & Finance	David B. Rankin
By-Laws	J.D. Hanes
Convention	Mark A. Nye
Membership	Phyllis D. Smith
Museum	Billy F. Harbaugh
Program & Entertainment	Marlene K. Snyder
Project	Willard P. Kolb
Public Relations	William C. & Phyllis D. Smith
Publicity	Joseph Andrejcek
Study Group Advisor	Phyllis D. Smith
1988 Auction	Lynn M. Welker
1988 Antique Show	Joy R. McFadden
1988 Flea Market	Marybelle Moorehead
Crystal Ball Editor	Phyllis D. Smith

Classified Advertising Rates

5 cents per word \$1.00 minimum

We cannot mix type size in classified advertisements. Abbreviations and initials will count as words. Payment in full must accompany all ads.

Display Advertising Rates

(Camera-ready ads preferred)	Members	Non-Members
1/8 page (9 items)	\$ 4.00	\$ 6.00
1/4 page (20 items)	7.00	10.00
1/2 page (20 items)	12.00	18.00
3/4 page	17.00	25.00
Full page (50 items)	22.00	33.00

Dealers Directory

Five-line maximum \$12.00 for 12 months

Cambridge *Crystal Ball* assumes no responsibility for items advertised and will not be responsible for errors in price, description or other information.

Advertising copy, articles, club news and notices must be in our hands by the 10th of each month to assure publication in our next issue.

Paid advertisements containing reproductions or new glass will not knowingly be accepted for publication.

Opinions or information stated in any signed article or letter printed in the *Crystal Ball* are those of the authors and may or may not agree with National Cambridge Collectors, Inc. The Editor reserves the right to refuse and to edit any material submitted for publication so as to conform with the editorial style of the *Crystal Ball*.

Please Address All Correspondence to:

National Cambridge Collectors, Inc.
P.O. Box 416 Cambridge, Ohio 43725
President — Willard Kolb, 614/695-0695
Secretary — Janice Hughes, 614/432-7823
Editor — Phyllis Smith, 513/323-3888

NCC Museum of Cambridge Glass is located on U.S. Route 40, one-eighth mile east of I-77 near Cambridge. Hours: 12 noon to 4 p.m., Wednesday through Sunday (March through October). Closed Easter and July 4th.

Please notify us immediately of any change in your address.

Please enclose an SASE when requesting information.

CAMBRIDGE GLASS BOOKS FOR SALE

by National Cambridge Collectors, Inc.

* **COLORS IN CAMBRIDGE GLASS**
(128 pages - 60 color plates - fully indexed)
Hardbound with Price Guide \$19.95

* **1930-34 CAMBRIDGE GLASS CO. CATALOG REPRINT**
(250 page reprint of original catalog)
Hardbound with Price Guide \$14.95

* **1949-53 CAMBRIDGE GLASS CO. CATALOG REPRINT**
(300 page reprint of original catalog)
Hardbound with Price Guide \$14.95

* **1956-58 CAMBRIDGE GLASS CO. CATALOG REPRINT**
(164 page reprint of original catalog)
Paperback \$6.95

1985 COMBINED PRICE GUIDE

for 1930-34 & 1949-53 catalog reprints Postpaid \$5.75

*NCC MEMBERS ONLY: These publications are available at 10% discount - or all four (4) at one time for \$50.00.

by Bill & Phyllis Smith

CAMBRIDGE GLASS 1927-1929
(66 page reprint of original catalog)
Paperback with Identification Guide \$7.95

by Mark Nye

CAMBRIDGE STEMWARE
(95 Stemware lines with 107 illustrations)
Paperback \$14.95

by Cambridge Buffs Study Group

NEARCUT
(108 page reprint of 1910 Cambridge Catalog)
Paperback with Price Guide \$9.95

by Mary, Lyle and Lynn Welker

CAMBRIDGE GLASS CO.
(120 pages of reprint from 8 old catalogs)
Paperback \$6.95

CAMBRIDGE GLASS CO. BOOK II
(129 pages of reprint from old catalogs)
Paperback \$6.95

CAMBRIDGE, OHIO GLASS IN COLOR II
Spiralbound \$5.95

by Harold and Judy Bennett

1903 CAMBRIDGE GLASS CO. CATALOG REPRINT
(106 page reprint of an original catalog)
Paperback \$7.50

Address your orders to:

BOOKS
National Cambridge Collectors, Inc.
P.O. Box 416
Cambridge, OH 43725

Please add \$1.00 (P & I) per order.

(Not required for Price Guide)

Ohio residents please add 6% state sales tax.

DEALER DISCOUNTS AVAILABLE - PLEASE WRITE!

THOUGHTS from your President It's a good thing we held the Auction when we did. A devastating ice storm hit our area last weekend (the week after the Auction). Mother Nature sure works in mysterious ways. She wreaked havoc just three days ago by destroying, or at least damaging, every tree in town and now she has given us 65 degree weather and sunshine to clean up the mess.

The Auction was a huge success again this year. We had a good turnout, many bargains were found, and yet we reached the highest total ever in receipts. Thanks to all of the consignors for the quality of the glass and special "Thanks" to all of you who attended, or sent in mail bids for the items. Total sales were \$19,250.50. The "Guesstimate" winner was Mike Arent of Cambridge, Ohio, who guessed \$19,435.00 He only missed it by \$184.50. Pretty good! The Auction Results List will appear elsewhere (see page 11) in this issue. There were some really fine items this year, weren't there?

RAFFLE TICKETS ENCLOSED IN THIS ISSUE!

Three outstanding prizes!

- 1st Prize - #3011 Nude Stem with amber Ivy Ball.**
- 2nd Prize - #1675 3-part Relish with Eagle Handle**
- 3rd Prize - Martha #209 8½" 3-part Relish with Blossom Time Etch**

Tickets - \$1 each or 6 for \$5

The sale of the Raffle tickets began during the Auction weekend and will continue until Saturday evening at the Convention . . . when we will hold the drawing. All of you will receive one book of 6 tickets stapled into this issue of the CRYSTAL BALL. It is hoped that everyone will want to purchase this book and write for more. Perhaps you could sell them to friends, co-workers, family members, etc. This will be a perfect opportunity to get even with all your friends, etc., who are always selling you tickets, candy, and the like!

We do hope you will help us make this a successful project. For those of you who are many miles away and don't have the opportunity to help with the Museum, this is a chance for you to get involved. Anyone who wants more books, just send your request for the amount you need to: **Raffle Tickets, N.C.C., Inc., P.O. Box 416, Cambridge, OH 43725**, and they will be sent right out to you. For those of you in the Cambridge area who want more tickets, you can stop in at the Museum and pick them up. This is a Project to raise money for the Museum - Please do your part to make it a success!

Don't forget to send your stubs and money back in time to be entered in the drawing!

This is going to be an exciting year for "Convention '88." Mark Nye has come up with some novel ideas which I'm sure you will enjoy. He will explain all of the fun things he has planned, elsewhere in this issue. Mark always manages to keep some of his surprises secret until Convention, so you'll want to attend to take advantage of them. He will be asking for volunteers again this year . . . don't let him down! Please get involved! The more help he has, the greater success of the Convention.

Joy McFadden will also need much help again this year with the Antique Show & Sale. All of these activities entail a lot of work and the more help there is, the easier it is for everyone.

There was a slight delay in getting the Flea Market planned because of some complications, but Marybelle Moorehead should have them ironed out by now and you should have your contracts.

Please help us make the Raffle a success, and start making plans for the Convention! I'll see you there **WILLARD**

NATIONAL CAMBRIDGE COLLECTORS, INC.

ANNUAL CONVENTION

June 23 - 26, 1988

PRELIMINARY SCHEDULE of CONVENTION EVENTS

THURSDAY - June 23rd

- 10:00 am - Convention Office Opens in Room 101. Registration packets available for pick up.
Display Room glass accepted in Room 101.
- 5:00 pm - Convention Office Closes.
- 7:00 pm - Convention Chairman's Reception. Upstairs Banquet Room.
Registration Required. Cash Bar.

FRIDAY - June 24th

- 9:00 am - Convention Office Opens. Registration packets available for pick up in Room 101. Glass for Display Room accepted in Room 100.
- 11:00 am - Slide Programs begin.
- 4:30 pm - Book Sales Opens - Lobby lower level.
Display Room Opens.
- 5:00 pm - Antique Show Opens - **Ticket Required.**
- 7:00 pm - Convention Office Closes.
- 8:00 pm - Opening Session - Upstairs Banquet Room.
15th Birthday Party for N.C.C., Inc.
Cash Bar - Cold Plate Dinner - Announcements
Mini-Auction. **Ticket Required.**

SATURDAY - June 25th

- 5:00 am - Dealer set up at Flea Market. **Admission Fee** for non-dealers.
- 6:00 am - Flea Market Opens - Site to be announced. **Admission Fee.**
- 8:00 am - Buffet Breakfast - Upstairs Banquet Room. **Ticket Required.**
- 9:15 am - Saturday Morning Program
Guest Speakers: **George Fogg and Frank Maloney.**
- 11:00 am - Antique Show Reopens. Book Sales reopens.
Convention Office reopens - Room 101. Display Room reopens.
- 12 noon - Slide Programs Resume.
- 1:00 pm - Annual "Show & Tell" Program - Location to be announced.
Bring your interesting items for discussion and identification.
Leader: **Lynn Welker.**
- 4:00 pm - Convention Office Closes.
- 6:00 pm - President's Reception - Banquet Room Upstairs. Cash Bar.
- 7:00 pm - Annual National Cambridge Collector's Banquet. **Ticket Required.**
Guest Speaker: **Frank Fenton.**

SUNDAY - June 26th

- 9:00 am - Buffet Breakfast - Upstairs Banquet Room. **Ticket Required.**
Annual Meeting of National Cambridge Collectors, Inc. to follow.
- 12 noon - Antique Show Reopens. Book Sales Reopen. Display Room Reopens.
- 1:30 pm - Former Cambridge Glass Company Employees Reunion.
N.C.C. Museum. **Bill Smith** Coordinator.
- 3:00 pm - Display Room Closes. Pick up loaned glass.
- 5:00 pm - Antique Show and Book Sales Close.

1988 CONVENTION

by MARK A. NYE
1988 Convention Chairman

By the time you are reading this, Convention 1988 will be less than three months away. I find this hard to believe, especially when I realize how many details remain to be tied down in the coming weeks.

Do your part in planning and preparation for the Convention by (1) planning to attend, (2) loaning glass for the display room, (3) loaning console sets for use on the Banquet tables, (4) promising yourself you will sign up to help in the Display Room or at the Book table. Remember, no matter how hard the Convention Committees work, it is the membership that makes the Convention a success, or failure, by their participation or lack thereof.

At the Chairman's Reception on Thursday night we will be having a Silent Auction, with all proceeds going to the Museum. We are in need of donations of glass, primarily from the 1950s, to use in this Auction. The glass will be on display and each person who wishes to bid will simply write their name and bid on a slip of paper and place it in a designated receptacle. Winning bids will be announced that night or at the Friday night session.

Friday night will be the opening session and the 15th Birthday Party of the National Cambridge Collectors, Inc. In honor of the occasion, the membership is being asked to give birthday presents to the organization, in the form of Cambridge Glass for our Museum. For more details regarding this and the birthday party, see the article, "Happy Birthday NCC," elsewhere in this issue.

I do hope to have two new slide programs ready for their initial viewing at the Convention. In addition, we will be showing some of the other programs that are in the N.C.C. program library.

In this issue you will find a preliminary Convention Schedule. I do not anticipate any major changes when the final schedule is finished. The final schedule will have specifics regarding slide programs and the locations for all events. Space permitting, the final schedule will be printed in the June CRYSTAL BALL, as well as being in your Registration packet.

Those of you wishing to loan glass for use in the Convention Display Room, please send a list of the glass you are willing to loan to: Display Room Chairman, N.C.C., Inc., P.O. Box 416, Cambridge, OH 43725. In this manner, we learn what to expect and can avoid duplication. Remember, we need any Cambridge glass from the 1950s. Check your 1949-53 and 1956-58 catalogs.

Motel reservations, regardless of where you plan on staying, should be made soon. The Shenandoah Inn and the in-town motels do fill up, so to assure yourself of a room in the desired location, reserve now. A list of motels is published elsewhere in this issue.

The Convention Registration Form will be in the May CRYSTAL BALL.

JUNE 1988



13th Annual
**NATIONAL
CAMBRIDGE
COLLECTORS**
ANTIQUE SHOW & SALE
(*& 15th Annual NCC Convention*)
SHENANDOAH INN
INTERSTATE 70 · EXIT 186 · 7 MILES EAST OF
CAMBRIDGE, OHIO
JUNE 24, 25, 26, 1988

HOURS	
FRIDAY, JUNE 24th (PREVIEW ADMISSION \$3.50)	5:00-8:00
SATURDAY, JUNE 25th	11:00-5:30
SUNDAY, JUNE 26th (ADMISSION \$2.00)	12:00-5:00

OFFERING CAMBRIDGE AND OTHER FINE GLASSWARE
FOOD DOOR PRIZES PARKING



VASES

PART IV

by MARK A. NYE

Two vases from the 1949-54 period not mentioned in Part III are #1410 a 6" rose bowl, and P569 or Pristine 9" crimped vase, both of which are not new during this period.

During the 1950s, prior to the initial plant closing, the latter was offered in carmen, emerald, mandarin gold and ebony; while it appears the rose bowl was only produced in crystal.

Another vase made in ebony, sometime after the reintroduction of this color, is the #1237, 9" footed vase. All three parts, vase, "keyhole stem" and foot were made in black glass.

The Cambridge Glass Company closed during the summer of 1954 and in the spring of the following year (under new ownership and management) it reopened and production resumed. No price lists are known from the period March 1955 until March 1956. Price lists were issued in March and October of 1956, but it wasn't until December 1956 that a new catalog was finally issued. With a few exceptions, the price lists of March and October 1956 were identical in their listings, the prime difference is the pricing of the wares being offered for sale - with the October prices higher. The two lists provide identical listings for the category of vases; hence all the information cited from the March price list also indicates what was being offered in the fall of 1956.

The price list of March 1956 lists 24 different vases, many of which were held over from the earlier production period. These are: #274, #278, #1066 (ivy ball), #1237, #1238, #1410, and #6004 (both sizes). From the Pristine line #563, #565, #568, #569, #572, and #604. From the Cambridge Square line #3797/77/78/79/80/and 91. This group was being made only in crystal and several, such as both sizes of #6004, #1237 and #1238, continued to be used for etchings. Rose Point, Chantilly and Wildflower were done on all four vases during this period, with Rose Point and Wildflower available plain etched, with a gold edge, or gold encrusted. A fourth etching, and one introduced in the reopen period, was Paisley. It

will also be found on the 8" version of the #6004.

One of the next four vases listed in the March 1956 price list, the #1528 10" vase, was not new during the reopen period as it is shown in the 1940 Cambridge catalog. Since no reference to this vase is found during the years 1949-54, it would appear this item was discontinued at some point, only to have the mold reactivated during the reopen period. The other three, consisting of the #1517 6" vase, the #1518 8" vase, and the #1519 10" vase, were new to the reopen period, being produced from reworked older molds. This rework is documented in surviving mold order books and was recorded in December 1955.

During the spring of 1956, these four vases, #1528, #1517, #1518 and #1519, were being made in crystal and the following colors: smoke, pink, pistachio, moonlight and mandarin gold. There was no price distinction regarding color; price being determined primarily by size and ranged from \$1.50 each for the 6" #1517 to \$3.50 each for the 10" #1528.

During the reopen period, Cambridge once again produced Crackled ware, albeit a small amount, and the #1528 vase was offered in crystal, smoke, pink, pistachio, moonlight and mandarin gold, Crackled. These vases are rarely seen today.

Crystal versions of #1517, #1518 and #1519 were decorated with the rock crystal engraving known as Starlite. At the same time the Pristine P580 8" flip vase in crystal was being decorated with the engraving known as "Duck Cattail." Somewhat unusual for the time period, the #1528 vase in crystal, pink, pistachio, moonlight and mandarin gold was being engraved Starlite (or #10P) and Wedding Rings.

Made in smoke, the #1528 was listed as being available with the gold decoration D/Star, while #1519 in smoke could have been had with D/Moon, another gold decoration. These two were later shown in the 1956-58 catalog.

Crystal, pink, pistachio, moonlight and mandarin gold #1528 vases, in addition to being sold plain or with the two engravings, Starlite and Wedding Rings, were also listed as being decorated with three etchings, Lace, Lion and Today. These are obscure etchings, known to this writer only through their listing in the 1956 price lists.

continued on page 8



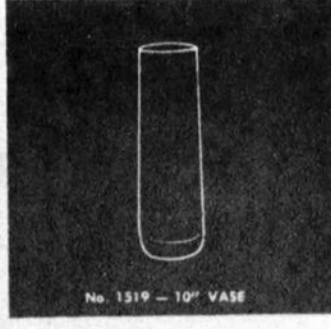
No. 1238 - 12" FOOTED VASE



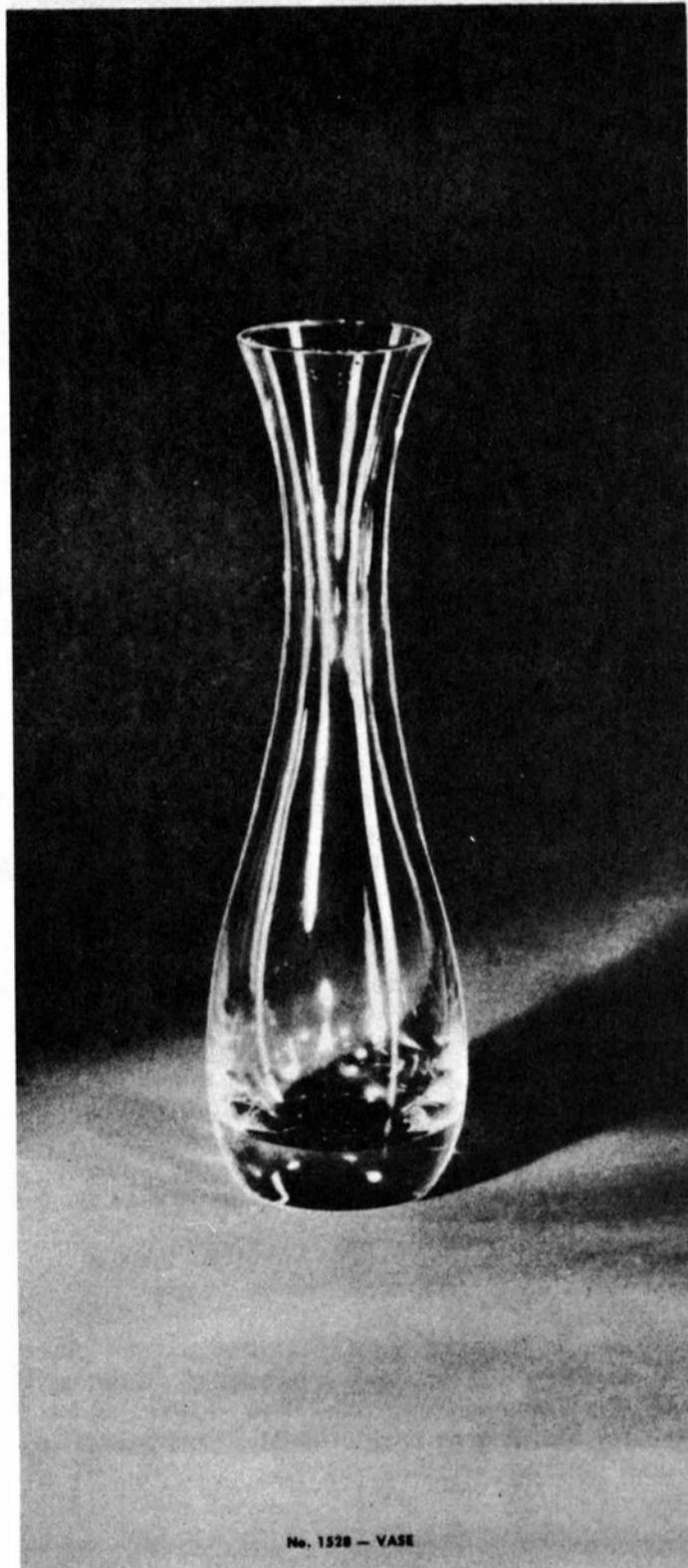
No. 6004 - 8" FOOTED VASE



No. P-568
CRIMPED OBLONG VASE



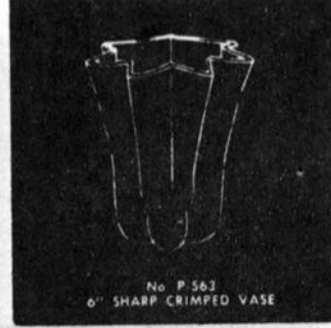
No. 1519 - 10" VASE



No. 1528 - VASE



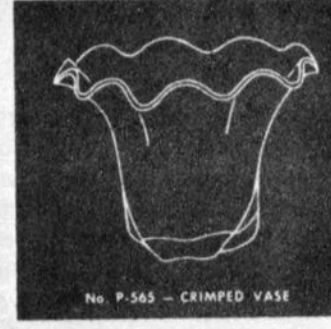
No. 3797/77
7 1/2" FOOTED VASE



No. P-563
6" SHARP CRIMPED VASE



No. P-604
8" FOOTED BUD VASE



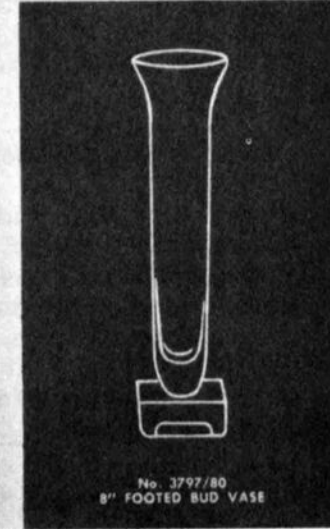
No. P-565 - CRIMPED VASE



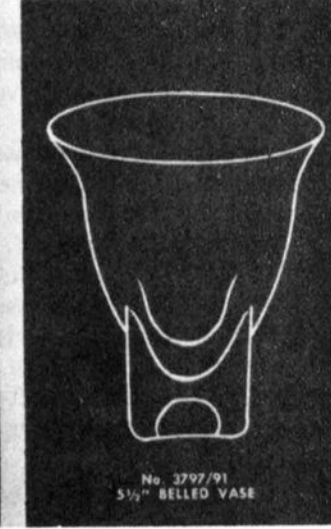
No. 3797/78
9 1/2" FOOTED VASE



No. 3797 79
11" FOOTED VASE



No. 3797/80
8" FOOTED BUD VASE

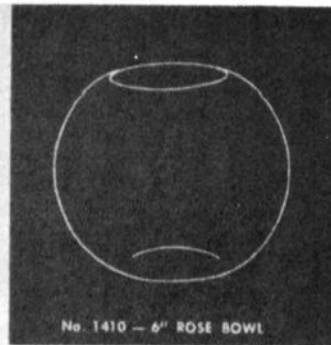


No. 3797/91
5 1/2" BELLED VASE

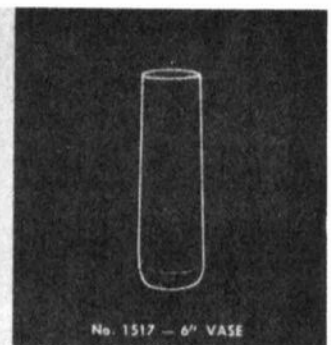
Vases



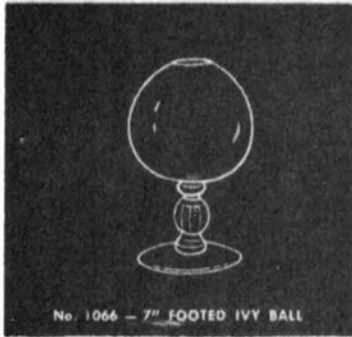
No. 278 - 11" FOOTED VASE



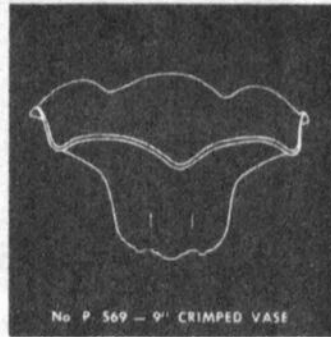
No. 1410 - 6" ROSE BOWL



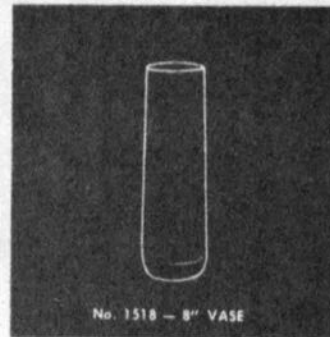
No. 1517 - 6" VASE



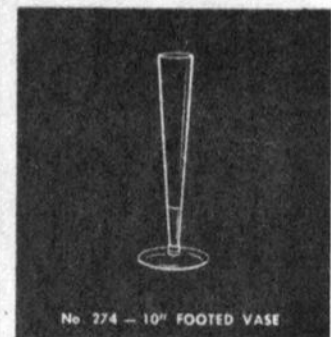
No. 1066 - 7" FOOTED IVY BALL



No. P. 569 - 9" CRIMPED VASE



No. 1518 - 8" VASE

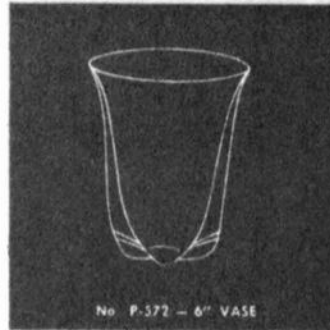


No. 274 - 10" FOOTED VASE

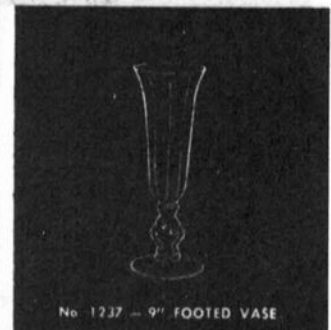
VASEScontinued from page 6

Several rock crystal engravings, in addition to the two previously mentioned, were done on one or more vases during the early years of the reopen period. These include Harvest, Laurel Wreath, Lynbrook, Rondo, Tempo and Roxbury, all of which are listed in the 1956 prices as being available on one or more vases.

The last of the Cambridge catalogs was published in December 1956 and contained two pages devoted to vases, none of which were being seen for the first time. These two pages are reprinted in this issue and hence the vases shown will not be listed here. The final Cambridge price list was issued in 1958 and contained, excluding the Mardi gras line, listings for 15 different vases, #274, #1237, #1238, #1410, #1518, #1519, #6004 (both sizes), P569, P572, P604, #3797/77/78 and /80, the latter three being from the Cambridge Square line.



No. P-572 - 6" VASE



No. 1237 - 9" FOOTED VASE

While production was primarily in crystal, a few were still being made in color as the company neared the end. #1528 and #3797/78 were being offered in carmen with the latter having a crystal foot; #1518 in moonlight blue, plain or engraved Starlite; and #1528 and #1519 were listed as being made in smoke. In addition, a select few continued to be available etched Chantilly, Rose Point and Wildflower as well as rock crystal engraved.



No. 6004 - 6" FOOTED VASE

The Mardi gras line was introduced in December 1957 and the following description comes from a Cambridge advertisement announcing the Line.

"This striking new gift line from Cambridge captures the Mardi gras spirit in unusual contours, shapes, brilliance and gaiety. Every color of the rainbow blends to give the light, bright touch . . . there's nothing like it anywhere!"

The line was made using crystal glass containing flecks of colored glass. Of the sixteen pieces listed in the 1958 price list, eleven are vases, all of which are unusual in shape; a design style some might call "free form." In addition to the regular line, the Sea Shell #46 flower holder is known with the Mardi gras style coloration. Very little Mardi gras is seen today. (The Mardi gras advertisement on page 9 is from the Crockery & Glass Journal December 1957.)



THE CAMBRIDGE GLASS COMPANY, CAMBRIDGE, OHIO, U. S. A.



Mardi gras

This striking new gift line from Cambridge captures the Mardi gras spirit in unusual contours, shapes, brilliance and gaiety! Every color of the rainbow blends to give the light, bright touch . . . there's nothing like it *anywhere!* Made in two groupings of designs, ordered by assortment. Assortment A shown above consists of: 1-A, 10" Large Vase; 2-A, 4½" Rose Bowl; 3-A, 7½" Triangle Vase; 4-A, 12" Tall Decanter; 5-A, 6½" Pear Shape Vase; 6-A, Ball and Neck Decanter; 7-A, Vase; 8-A, 4 x 4 Square Heavy Vase. The eight pieces net at \$40.00, retail \$9.95 each. B assortment has 12 items, \$36.00 net, retailing at \$6.00 each.

See us, see Mardi gras at the Pittsburgh Show! January 4-10, Rooms 834 and 835, The Carlton House.

Cambridge exhibits at all major shows.

the CAMBRIDGE GLASS COMPANY
CAMBRIDGE, OHIO



1988 AUCTION RESULTS

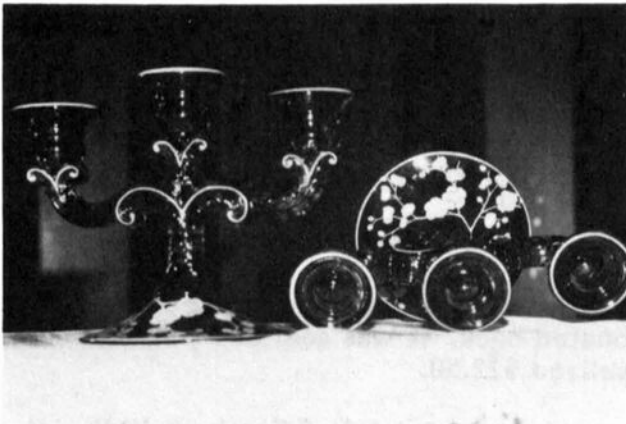
1. \$ 56.00	61.\$ 12.50	121.\$ 50.00	181.\$ 25.00	241.\$ 80.00	301. \$ 25.00
2. 20.00	62. 30.00	122. 65.00	182. 35.00	242. 100.00	302. 11.00
3. 75.00	63. 40.00	123. 45.00	183. 22.50	243. 70.00	303. 17.50
4. 55.00	64. 130.00	124. 12.50	184. 15.00	244. 65.00	304. 25.00
5. 20.00	65. 30.00	125. 70.00	185. 17.50	245. 20.00	305. 22.50
6. 12.50	66. 45.00	126. 20.00	186. 12.50	246. 50.00	306. 60.00
7. 35.00	67. 410.00	127. 35.00	187. 15.00	247. 12.50	307. 29.00
8. 25.00	68. 125.00	128. 35.00	188. 20.00	248. 45.00	308. 15.00
9. 17.50	69. 35.00	129. 15.00	189. 12.50	249. 15.00	309. 20.00
10. 20.00	70. 35.00	130. 20.00	190. 12.50	250. 15.00	310. 22.50
11. 100.00	71. 125.00	131. 35.00	191. 12.50	251. 20.00	311. 48.00
12. 45.00	72. 50.00	132. 25.00	192. 12.50	252. 250.00	312. 10.00
13. 27.50	73. 22.50	133. 35.00	193. 200.00	253. 20.00	313. 40.00
14.* 35.00	74. 37.50	134. 35.00	194. 120.00	254.* 75.00	314. 15.00
15. 26.00	75. 80.00	135. 37.50	195. 350.00	255. 12.50	315. 35.00
16. 10.00	76. 35.00	136. 35.00	196. 50.00	256. 30.00	316. 15.00
17. 55.00	77. 15.00	137. 22.50	197. 20.00	257. 20.00	317. 30.00
18. 40.00	78. 25.00	138. 80.00	198. 190.00	258. 26.00	318. 35.00
19. 10.00	79. 25.00	139. 60.00	199. 45.00	259. 12.50	319. 27.50
20. 40.00	80. 20.00	140. 35.00	200. 90.00	260. 23.00	320. 40.00
21. 72.00	81. 35.00	141. 30.00	201. 175.00	261. 60.00	321. 27.50
22. 56.00	82. 50.00	142. 15.00	202. 47.50	262. 18.00	322.* 41.00
23. 13.00	83. 25.00	143. 20.00	203. 505.00	263. 10.00	323. 40.00
24. 20.00	84. 90.00	144. 20.00	204. 22.50	264. 17.00	324. 25.00
25. 35.00	85. 75.00	145. 32.50	205. 40.00	265. 22.50	325. 17.50
26. 55.00	86. 95.00	146. 20.00	206. 25.00	266. 20.00	326. 22.50
27. 21.00	87. 67.50	147. 10.00	207. 25.00	267. 50.00	327. 15.00
28. 65.00	88. 20.00	148. 35.00	208. 40.00	268. 40.00	328. 12.50
29. 20.00	89. 30.00	149. 20.00	209. 45.00	269.*120.00	329. 10.00
30. 50.00	90. 15.00	150. 12.50	210. 50.00	270. 50.00	330. 3.00
31. 35.00	91. 15.00	151. 15.00	211. 70.00	271. 40.00	331. 12.00
32. 30.00	92. 85.00	152. 10.00	212. 55.00	272. 25.00	332. 30.00
33. 10.00	93. 55.00	153. 35.00	213. 45.00	273. 17.50	333. 7.00
34. 22.50	94. 30.00	154. 38.00	214. 75.00	274. 5.00	334. 8.00
35. 36.00	95. 45.00	155. 20.00	215. 88.00	275. 40.00	335. 70.00
36. 55.00	96. 45.00	156. 145.00	216. 100.00	276. 5.00	336.* 17.50
37. 20.00	97. 50.00	157. 56.00	217. 775.00	277. 35.00	
38. 90.00	98. 17.50	158. 20.00	218. 52.50	278. 10.00	* Additions and corrections
39. 50.00	99. 130.00	159. 50.00	219. 175.00	279. 25.00	
40. 40.00	100. 50.00	160. 12.50	220. 67.50	280. 60.00	
41. 40.00	101. 65.00	161. 20.00	221. 190.00	281. 10.00	
42. 40.00	102. 120.00	162. 20.00	222. 42.50	282. 25.00	14. crack in sugar hdl.
43. 30.00	103. 120.00	163. 70.00	223. 125.00	283. 50.00	166. 2
44. 22.50	104. 10.00	164. 20.00	224. 35.00	284. 22.50	177. chip on pink ashtray
45. 100.00	105. 30.00	165. 57.50	225. 55.00	285. 60.00	216A 85.00
46. 90.00	106. 70.00	166.* 40.00	226. 55.00	286. 30.00	lg. lt. grn. Buddha
47. 100.00	107. 40.00	167. 45.00	227. 65.00	287. 22.50	237. stick leans
48. 130.00	108. 100.00	168. 17.50	228. 105.00	288. 30.00	254. chip on 1-all stained
49. 90.00	109. 100.00	169. 25.00	229. 65.00	289. 25.00	269. stained
50. 60.00	110. 115.00	170. 17.50	230. 45.00	290. 30.00	294.Valenica not Elaine
51. 30.00	111. 225.00	171. 55.00	231. 20.00	291. 15.00	322.polished top on 3
52. 35.00	112. 125.00	172. 35.00	232. 43.00	292. 30.00	336.comport #3121 nick
53. 80.00	113. 85.00	173. 47.50	233. 325.00	293. 25.00	
54. 35.00	114. 50.00	174. 35.00	234. 225.00	294.* 80.00	
55. 55.00	115. 40.00	175. 90.00	235. 925.00	295. 400.00	
56. 40.00	116. 45.00	176. 40.00	236. 140.00	296. 15.00	
57. 25.00	117. 135.00	177.* 5.00	237.* 60.00	297. 45.00	
58. 97.50	118. 25.00	178. 10.00	238. 75.00	298. 32.50	
59. 20.00	119. 45.00	179. 25.00	239. 90.00	299. 90.00	
60. 25.00	120. 45.00	180. 25.00	240. 80.00	300. 290.00	

auction report

by PHYLLIS D. SMITH

All Auction Photo's by JOE ANDREJCAK

This year has to go down in N.C.C. history as having had the "Best Ever" Auction! When I say "Best," I am speaking in terms of the outstanding quality of the Cambridge glass offered, total numbers in attendance, participation of our mail bidders, and the highest total of dollars realized from any sale of this kind. Auction Chairman Lynn Welker and his committee certainly deserve a "Well done!"



JAPONICA Candlesticks brought \$925

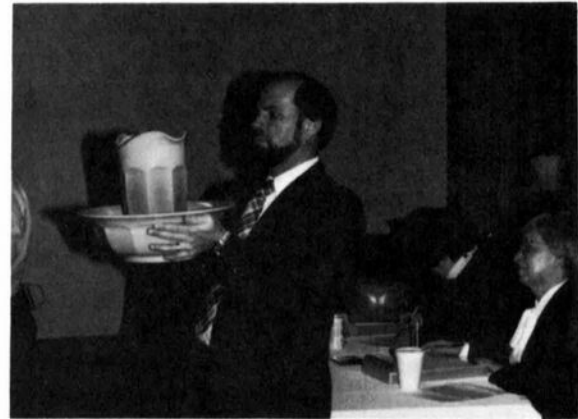


Green Carnival NEARCUT Thistle Bowl sold for \$120, and the Buzz Saw Tumbler for \$50

Well over a hundred interested Cambridge collectors turned out to help make this Auction a success. Just a portion of the crowd is shown in the photo at the top of the next column. Bidding was brisk and Auctioneer Craig Connelly managed to keep the audience in a lighthearted mood, with his quick wit and dry sense of humor.



FACES IN THE CROWD



Holding the Azurite Pitcher and Bowl that sold for \$775, is assistant Auctioneer John Kennard. Behind John are clerks Carole West, (right) and Vicki Wollenhaupt.



The seldom seen large Bunny Box hopped away for \$410 while the satin finish Lady Legs managed to bring \$100 - even tho they did have a few chips.

Sorry, room does not permit comment on all the items sold. Get out your original list and write in the prices from the preceding page.

..... Believe me, it is an education!

Club News

National Cambridge Collectors, Inc.
Quarterly Meeting
February 26, 1988
Shenandoah Inn, Old Washington, Ohio

The meeting was called to order at 8:12 pm by President Kolb. In attendance were 10 Board members and 56 Club members and guests.

The minutes of the previous meeting held on November 7, 1987 were read by Janice Hughes and approved.

The Treasurers report was given by Bill Smith showing the Operating Equity as of December 31, 1987 to be \$23,417.00 and the Museum Equity \$125,822.00. He stated he was pleased with last year's progress.

COMMITTEE REPORTS

BY-LAWS: Chairman J.D. Hanes submitted a proposal for a By-Laws change under Article III. The proposal will be in the CRYSTAL BALL and voted on at the Annual Meeting.

CONVENTION: Chairman Mark Nye reported the theme will be "Cambridge - the 1950s." A complete schedule of events will be in the April CRYSTAL BALL.

MEMBERSHIP: Chairman Phyllis Smith reported we now have 1,232 members.

CRYSTAL BALL: Editor Phyllis Smith reported the CRYSTAL BALL will be mailed on Monday, February 29th.

PROJECTS: Chairman Willard Kolb reported N.C.C. is holding a Raffle. One book of tickets will be in the CRYSTAL BALL and additional books will be available. The drawing will be at the Convention.

PUBLICITY: Chairman Joe Andrejcek reported all the free ads have been in the major publications and the paid ads will be placed in April.

MUSEUM: Chairman Bill Harbaugh reported the Museum will open on March 2. An 8 H.P. riding mower has been donated by Roger and

Marjorie Seaton.

PUBLIC RELATIONS: Bill Smith reported they will be guests at the Rochester, Michigan Show in May and the Lakeland, Florida Show in September. They will attend the N.D.G.A. Convention in Denver, Colorado in July.

FLEA MARKET: Chairman Marybelle Moorehead reported plans are incomplete at this time.

OLD BUSINESS: None.

NEW BUSINESS: Bill Smith reported nominees for the Board of Directors are as follows:

Marybelle Moorehead, Cambridge, Ohio
Clarke West, Springfield, Ohio
Dean Westfall, Cambridge, Ohio

President Kolb announced the floor open for nominations. Mark Nye nominated Cindy Arent, Cambridge, Ohio.

President Kolb closed the nominations.

The Door Prize was won by Lyle Welker and donated back. It was sold at Mini-Auction and realized \$22.50.

A motion was made by Frank Wollenhaupt to adjourn at 8:40 pm.

Lynn Welker presented "Show & Tell" and reported on the Auction glass.

Janice Hughes, Secretary

Study Club News

STUDY GROUP #8 - SOUTHERN MICHIGAN
"THE MICHIGAN CAPRICES"
Phone: 313/655-4703

On January 17th, the Michigan Caprices met at the home of Frank and Phyllis Hayes. We had a guest from Grand Blanc.

The Program was "Did You Know?" I picked some interesting facts I felt the Study Group might not be aware of. Did you know that black glass was very popular in the late 1800s and early 1900s? Ebony, Ebon and Smoke were

continued on page 14



HAPPY BIRTHDAY N.C.C.

by MARK A. NYE
1988 Convention Chairman

This year, as you have probably heard by now, we will be celebrating our 15th Birthday! Now when you have a birthday you just have to have a party, and a party we will have - on Friday night, June 24th.

The theme of this year's Convention is "Cambridge and the 1950s" and in keeping with this theme, we are asking anyone who desires to do so, come to the party in 1950s dress!

The Birthday Party will be held in conjunction with the Friday night opening session and you must be Registered in order to attend. There will be special decorations, music from the 1950s, and a birthday cake, in addition to the regular activities and meal.

As we did for our 10th birthday, we thought you might like to follow the custom of bringing a gift to the Birthday Party for the celebrant. Of course, what the birthday celebrant desires is glass for the Museum. This is not mandatory and you are more than welcome to register for Friday night not bring a gift.

Any piece of Cambridge glass is acceptable as a gift and just because you feel you can't afford to give an expensive piece doesn't mean you can't participate. Our Museum is there to show the entire range of Cambridge production and the factory produced the plain Round Ware line as well as gold encrusted Rose Point on carmen blanks and Japonica candlesticks!

For those of you who do bring a gift, please attach a label with your complete name and address. We do hope to be able to publish in the June CRYSTAL BALL a listing of the glass the Museum now owns, in order to avoid duplication. If two of you bring identical gifts this year, we will ask if one can be placed in the Mini-Auction to be held that same evening. If you do not want your gift to be used in this manner, please write "Museum Only" on your address label and your wishes will be honored.

Friday Night should be a fun night, especially if most of us dress in '50s styles! Remember poodle skirts, turned up jeans and greased

down hair - but then, how could you forget?

There might even be a surprise or two in store for those who attend, possibly a prize for the "Best Dressed." Most of us will never be able to celebrate our 15th birthday again, or dress the way we did 30 years ago, but let's get together, celebrate NCC's 15th, and feel young again!

MOTEL & CAMPGROUND INFORMATION

SHENANDOAH INN

P.O. Box 147
Old Washington, OH 43768
(614) 489-5511

SALT FORK LODGE

P.O. Box 7
Cambridge, OH 43725
(614) 439-2751

BEST WESTERN MOTEL

(614) 439-3581

CAMBRIDGE TRAVELODGE

(614) 432-7375

DAYS INN

(614) 432-5691

DEER CREEK MOTEL

(614) 432-6391

HOLIDAY INN

(614) 432-7313

The mailing address for the motels shown without address is:

Route 209 & I-70
Cambridge, OH 43725

There are a few additional motels in the Cambridge area, and several nice campgrounds. If you are interested in obtaining additional information on the Cambridge/Guernsey County area, you can write for a FREE Brochure entitled "Cambridge/Guernsey County Discover Us!" Send your request along with your name and address to:

Cambridge/Guernsey Country
Visitors & Convention Bureau
2250 Southgate Parkway
Cambridge, Ohio 43725

STUDY CLUBS continued from page 12

displayed. Ebon was actually sand blasted to obtain that satiny effect. Did you know if you hold a Smoke colored item to the light the thick part of the glass will show amethyst?

Thanks again to back issues of the CRYSTAL BALL, a pair of Helio #200/2 7" candlesticks were shown for "Show & Tell." They had an iridescent treatment and gold cattail decoration in the middle of each candlestick. A sad tale about the breaking of a pressed Rose-point crystal cordial was told.

I was happy to report that Phyllis and Bill Smith have agreed to be guests at the Great Lakes Depression Glass Club's Show, May 14 and 15. We will all be looking forward to seeing them there.

Our next meeting will be held in the home of Lee and Martin Coppo on February 19th.

On February 19th, the Michigan Caprices met at the home of Lee and Martin Coppo. One guest was present.

Lee chose for her program a very timely subject, Mardi gras glass. The only member in our group who has an item of this glass, was in Florida. We used our NCC Color books to help us imagine that we had a piece of this unusual glass in our hands.

Each member was asked to bring their first piece of Cambridge to the meeting. Of course, we had some very pretty items, but Lee's story was again, the topper! During WWII, Martin and Lee were living in Boston. They were being transferred and Lee was given a gift from her co-workers. It was a tall vase filled with flowers. The vase was Cambridge, of course . . . with Diane etching! What a terrific "farewell gift!"

submitted by Phyllis Hayes

we get letters

February 27, 1988

Dear Officers and Committee Chairpersons:

Enclosed is my subscription (membership dues)

for the CRYSTAL BALL for 2 years. The years are beginning to fly by too swiftly, and I almost forgot to send in my subscription.

I will be thinking about the Auction today with "tears" in my eyes because I am in Florida, 1,200 miles away from all 335 pieces of precious Cambridge!!

I brought the January CRYSTAL BALL with me just in case I could persuade my husband to return home before today! No such luck. Each time he heard the weather report for Ohio he said "We are staying HERE till it warms up in Ohio!"

There's always the 1989 Auction, but that is 365 long days away!

Sincerely,
Martha Gilbert
Ohio and Florida

NATIONAL CAMBRIDGE COLLECTORS

FLEA MARKET

Once again, there will be a Flea Market, sponsored by N.C.C., Inc., and held during Convention weekend. The date will be:

SATURDAY, JUNE 25, 1988

6 AM - 12 NOON

(location to be announced later)

If you would like a Contract or desire further information, please direct your inquiries to: **Marybelle Moorehead, Flea Market Chairman, c/o National Cambridge Collectors, Inc., P.O. Box 416, Cambridge, OH 43725.**



*You give but little when
you give of your possessions.
It is when you give of
yourself that you truly give.*

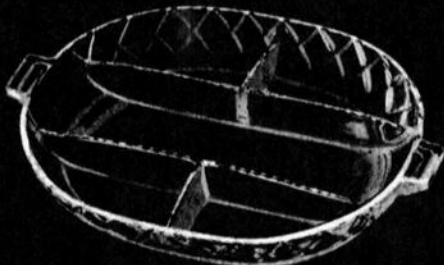
KAHLIL GIBRAN



The Cambridge Glass Company



Manor (1003)



P. 212—10 in. 5 part
Celery & Relish



1498—8 in. 3 part Relish



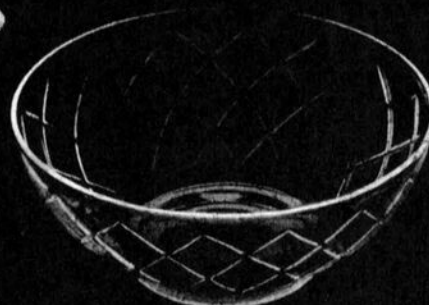
P. 252—Sugar & Cream



957 Ice Pail W Hdl.



647—6 in. 2 Lite Candlestick



P. 427—10 in. Bowl



647—6 in. 2 Lite Candlestick



628—3 1/2 in. Candlestick



P. 430—12 in. Bowl



628—3 1/2 in. Candlestick



533—3 pc. Mayonnaise Set



278—11 in. Ftd. Vase



P. 580—8 in. Vase



135—10 in. Cheese & Cracker



532—6 in. Compot



P. 166—13 1/2 in. Cabaret Plate



300—6 in. Candy Box
& Cover, 3 Pld.

Cambridge, Ohio - - - U. S. A.



The Cambridge Glass Company



Montrose (1004)



533—3 pc. Mayonnaise Set



3400 68 Sugar & Cream



647—6 in. 2 Lite Candlestick



1349—12½ in. 4 Ftd. Bowl



647—6 in. 2 Lite Candlestick



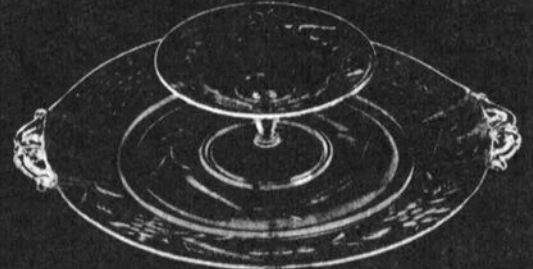
628—3½ in. Candlestick



993—12½ in. 4 Ftd. Bowl



628—3½ in. Candlestick



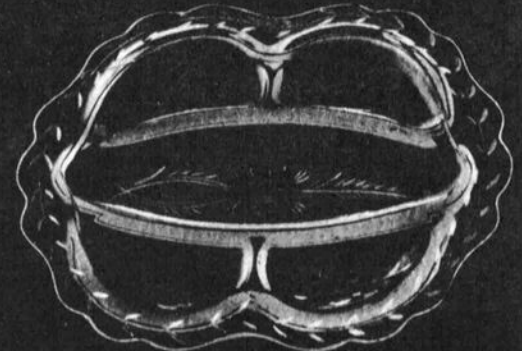
1496—11½ in. Cheese & Cracker



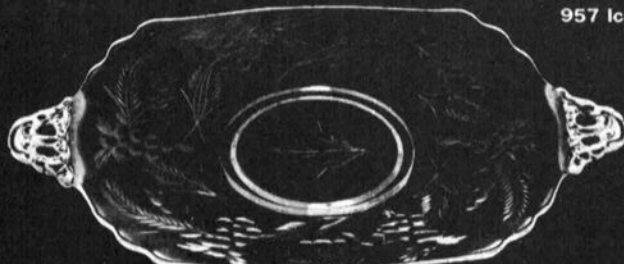
1399—11 in. Salad Bowl



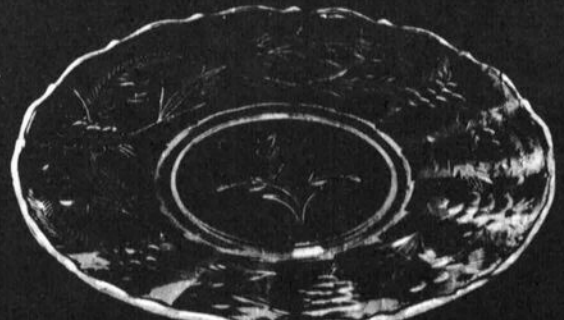
957 Ice Pail W/Hdl.



3400/67—12 in. 5 part Celery & Relish



1186—12½ in. 2Hdl. Plate



1397—13½ in. Plate, R. E.

Cambridge, Ohio - - - U. S. A.

The DAZE

★ SPECIAL OFFER
to NCC friends
\$2. off the 1 year
subscription price,
when on this form
or copy of.

The Original. National monthly newspaper dedicated to the buying, selling & collecting of colored glassware and china including Depression Glass and the Elegant Glass (Cambridge, Heisey, Fostoria etc.) We educate and inform you each month with feature articles by top notch columnists, readers "finds", club happenings, show news and a multitude of ads. Find those missing pieces to your 30s, 40s or 50s pattern. Can't identify it? Perhaps we can help. "Keep up with what's happening with a subscription to the DAZE. Buy, sell or trade from the convenience of your easy chair.

Name _____ Street _____

City _____ State _____ Zip _____

1 yr. \$15.00 2 yrs. \$29.00 \$1.75 single current copy
 Check enclosed MasterCard Visa

Exp. date _____ Card No. _____

Signature _____

Orders to D.G.D., Box 57NC, Otisville, MI 48463

Please allow 30 days for your first issue— Canadian subscribers, add \$1. per year and subscribe by charge card only! This Special Offer May Not Be Combined With Other Special Offers

*"There isn't any map of the road to success;
you have to find your own way."*

UNKNOWN

— Classified —

FOR SALE: #3122 Diane etched: 7-1/4" Goblets (11) \$25 ea.; 5" Juices (12) \$20 ea.; Sherbets (8) \$20 ea.; 6-1/4" Underplates (5) \$12 ea. **Barbara Jennings**, 134 Garden Parkway, Henrietta, NY 14467.

BUYING: Moonlight Caprice or Rosepoint by Cambridge; Rose or Orchid by Heisey; & June, American, Fairfax, Versailles, Trojan, etc., by Fostoria. **Nadine Pankow**, 207 South Oakwood, Willow Springs, IL 60480. 312/839-5231.

FOR SALE: Elaine etched stemware, 8 of each: tall goblets; tall sherbets; low sherbets; wines; cups & saucers; and salad plates. Also candy dishes and misc. other pieces. Call or write to: **Marjorie Dobbins**, 145 Garden Drive, Montgomery, IL 60538. Phone: 312/892-2869.

WELCOME TO GLASS COUNTRY!

I-70

STOP AND SEE US

ROUTE 40

WE FEATURE GLASSWARE OF:
CAMBRIDGE, HEISEY, FENTON & FOSTORIA
Plus a full line of Art Pottery and a General line of Quality Antiques

*Stage Coach
Antique Mall*

RT. 40, ONE-HALF MILE WEST OF I-70 NORWICH EXIT #164
MANY DEALERS-WIDE SELECTION-PLENTY PARKING

DORIS AND ROY ISAACS
BUY AND SELL
614-872-3720



7525 EAST PIKE
NORWICH, OHIO 43787

MON THRU SAT 10-5:30 SUN 12-5:30
SUMMER EVENING HOURS BY CHANCE

MANY DEALERS - PLENTY OF PARKING

SPRINGFIELD Antique Show & Flea Market

Clark County Fairgrounds

SPRINGFIELD, OH

Exit 59 on I-70

400-800 DEALERS

INSIDE AND OUTSIDE

Ohio's largest year round show with an
emphasis on quality antiques

9:00 AM - 5:00 PM

Admission \$1.00 per Weekend

Children under 12 FREE

NEXT SHOW

APRIL 16 & 17, 1988

1988 SHOW DATES

MAY	Extravaganza	20-21-22
JUNE		18-19
AUG.		20-21
SEP.	Extravaganza	16-17-18
OCT.		22-23

BRUCE KNIGHT, MGR.

For Information Write
P.O. Box 2429, Springfield, OH 45501
Phone (513) 325-0053

Great Lakes Depression Glass Club
Fourteenth Annual Show and Sale

May 14

Saturday
10 a.m. - 5 p.m.

1988

May 15

Sunday
11 a.m. - 4 p.m.

Oakland University - Rochester, Michigan

I-75 at University Drive Exit

original
location

\$2.00
DONATION

A Reminder . . .

When you start to criticize a Man
And your phrases turn to blame,
Know more of him you censure
Than his business and his name;
For it's likely that acquaintance
Would your prejudice dispel,
And you'd really come to like him
If you knew him very well.
When you get to know a fellow
And you understand his ways
Then his faults won't really matter
For you'll find a lot of praise.
— Edgar Guest



HAPPY EASTER!



*Greater is he who acts
from love than he who
acts from fear.*

SIMEON BEN ELEAZAR



COLUMBUS ANTIQUE FLEA MARKET (ANTIQUES & COLLECTIBLES)

Ohio State Fairgrounds - Lausche Building
Off I-71 Exit 17th Avenue - Columbus, Ohio

APRIL 17 TH

Sunday Only - 7 A.M. to 4 P.M.
Show Admission \$1.50 - Under 12 Free
150 QUALITY DEALERS

SELLING: Advertising Art Deco, books, Cambridge, clocks, coins, collec-
tibles, Depression glass, dolls, Fiesta, fine early furniture, Heisey, jewelry,
lamps, oak furniture, post cards, pottery, good primitives, tools and print
shop items



4214 North High Street, Columbus, Ohio 43214
(614) 267-8163 (614) 263-6830 (614) 885-2352

NEXT SHOW: May 15, 1988

DEALERS



DIRECTORY

NOTE: When writing to the Dealers listed here, please enclose a SASE!

<p>MILBRA'S MATCHING SERVICE P.O. Box 363, Rio Vista, TX 76093 Milbra Long 817 / 645-6066 FOSTORIA * CAMBRIDGE * HEISEY * DEPRESSION ERA GLASSWARE BUY and SELL</p>	<p>BENICIA ANTIQUE SHOP 305 First Street Benicia, California 94510 OPEN 11 AM - 5 PM Closed Monday Z. E. LOPES 707-745-0978</p>	<p>THE MUTED SWAN ANTIQUES 5486 Peachtree Rd. Chamblee, GA 30341 Heart of Chamblee Antique Row Specializing in Cambridge, Heisey and Fostoria Bill & Pat Miller 404-451-7620</p>
<p>ANDREJCAK'S ANTIQUES 14533 Bayes Ave. Lakewood, Ohio 44107 Joe & Karen Andrejcek 216-226-3417 SHOWS ONLY — CAMBRIDGE — FENTON — CHINA</p>	<p>VISIT HISTORIC BENICIA and its 28 shops Off Interstate #80 North of San Francisco</p>	<p>SPECIALIZE IN CAMBRIDGE GLASS & ANTIQUES DOYLE L. BYINGTON 553 Sanchez Street, San Francisco, CA 94114 415/621-1854 Shows: Mail-Order - Buy & Sell - By Appointment</p>
<p>BOGART'S ANTIQUES Stagecoach Mall, Building #2 Norwich, OH 43767 ***** Jack and Sharon Bogart 614/826-7439 and 614/872-3514 ***** BUY - SELL - APPRAISE - REFINISH SEAT WEAVING - CLOCK REPAIR COPPER & BRASS POLISHING GENERAL LINE CAMBRIDGE GLASS</p>	<p>ANTIQUES ON THE MALL SPECIALIZING IN CAMBRIDGE GLASS Stagecoach Mall - Bldg. 3 - Norwich, OH Virginia Bennett 614/432-4483 64183 Warne Drive, Cambridge, OH 43725</p>	<p>BERKELEY ANTIQUES 69 Berkeley St., Boston, MA 02116 OPEN: Monday thru Saturday 11 AM to 5 PM GEORGE & FRANK 617/426-1048 DUNCAN, CAMBRIDGE, HEISEY, GENERAL LINE Elegant American Glassware of the Early 1900s ABBA Antiques Bill & Barbara Adt (404) 279-1942 P.O. Box 2485 Lilburn, Georgia 30226</p>
<p>THE GLASS CUPBOARD 39 Shire Oaks Drive Pittsford, New York 14534 Marcia Ellis Cambridge, Duncan Miller (716) 586-7596 Shows, Mail Order, Appt.</p>	<p>JUDY'S ANTIQUES Judy Bennett 422 S. Ninth Street (Corner of Jefferson) Cambridge, Ohio 43725 BUYING Ph. 614-432-5855 SELLING <i>Cambridge Glass my Specialty</i></p>	<p>"Happiness Is" - The Stultzs 3106 Warren Court, Glen Allen, VA 23060 Shows and Mail (Richmond Area) 804/262-1273 GLASS CIRCA 1890-1960</p>
<p>PEG AND DALE GOTSCHALL Antiques, Cambridge and Other Quality Glass 833 N. 6th St., Cambridge, Ohio 43725 Phone 614/432-5529 Stagecoach Mall — Bldg. 2 — Norwich, Ohio</p>	<p>GREEN ACRES FARM 2678 Hazelton Etna Rd., Pataskala, OH 43062 (State Route 310 North) Sat. & Sun. 1-7 PM 614/927-1882 Antiques, Crystal Glass and Collectibles</p>	<p>MOSTLY HEISEY 16 Clayton Place, Albany, NY 12209 Rhoda Curley 518 / 482-6272 SHOP and MAIL ORDER</p>
<p>THE HITCHING POST 7467 S. R. 88 Ravenna, OH 44266 Ph. 216-296-3686 D. McDaniel CAMBRIDGE — HEISEY — GENERAL LINE</p>	<p>BUY-SELL 513/390-3617 Taste of Honey Glassware—Collectibles CLARKE & CAROLE WEST 3433 Turner Dr. Springfield, OH 45504</p>	<p>1886 HOUSE East Schodack, N.Y. 12063 MAIL and SHOWS Laurie Cruise 518-477-5895 CAMBRIDGE - NORITAKE - AZALEA - D.G.</p>
<p>L & M ANTIQUES 1331 S.E. 4th Ave., Pompano Beach, FL 33060 Lydia & Cliff McNeil 305/943-2274 CAMBRIDGE & FOSTORIA OUR SPECIALTY Buy & Sell Shows Only</p>	<p>REMEMBRANCES 7597 Daphne Dr., No. Syracuse, NY 13212 Shirley S. Ladouceur 315 / 458-5297 ANTIQUES and COLLECTIBLES MAIL ORDER SHOWS APPOINTMENTS</p>	<p>MARGARET LANE ANTIQUES 2 E. Main St., New Concord, OH 43762 Lynn Welker 614/826-4418 CAMBRIDGE GLASS MATCHING SERVICE Hours Mon.-Fri. 1-5 PM or by Appointment</p>
<p>THE GLASS URN 456 West Main Street, Suite G. Mesa, AZ 85201 602 / 833-2702 Mail Order Shows Open Shop CAMBRIDGE, FOSTORIA, HEISEY, ETC.</p>	<p>AL STEELE Westerville, Ohio 614-882-6483 or 614-882-7124 Mail Orders and Shows Only HEISEY — CAMBRIDGE — PATTERN GLASS</p>	<p>BUD'S TRADING POST GENERAL STORE — FLEA MARKET 501 Wheeling Ave. Cambridge, OH 43725 10-5 Mon. thru Sat. 614-432-4688 CAMBRIDGE - PATTERN - ART GLASS This Bud's for Y'all</p>



National Cambridge Collectors, Inc.

P. O. Box 416, Cambridge, Ohio 43725

A nonprofit organization dedicated to the preservation and study of Cambridge Glass

You Are Cordially Invited
To Become A Member Of The

NATIONAL CAMBRIDGE COLLECTORS INC

Benefits derived from membership include: receipt of our club publication, The Cambridge CRYSTAL BALL; informative Quarterly Meetings; Antique Shows, Auctions; and other special events

The Cambridge CRYSTAL BALL is published the first of each month. This newsletter contains educational and interesting articles, questions and answers, information on reproductions and reissues, notices of all club functions, classified advertisements, dealers directory, and many other features of interest to collectors of Cambridge Glass.

Yearly dues are \$13.00 for Individual Members and \$3.00 for each Associate Member. All members have voting rights, but only one issue of the CRYSTAL BALL will be mailed per household.

Name (please print) _____ \$13.00

Mailing Address _____

City _____ State _____ Zip _____

Associate Members: (Must be at least 12 years of age and living in the same household.)

1. Name _____

2. Name _____

3. Name _____

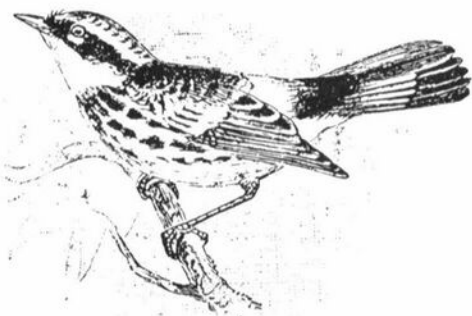
Total number of Associate Members _____ @ \$3.00 each \$ _____

TOTAL AMOUNT ENCLOSED: \$ _____

Please make check payable to: NATIONAL CAMBRIDGE COLLECTORS, INC.

Recommended by _____

APRIL
1988



HAPPY EASTER!

**VISIT YOUR MUSEUM
of
CAMBRIDGE GLASS**

HOURS:

Wednesday thru Sunday - 12:00 to 4:00 P.M.

National Cambridge Collectors, Inc.
P. O. Box 416 Cambridge, Ohio 43725

FIRST-CLASS MAIL
U.S. POSTAGE
PAID
So. Vienna, Ohio
45369
Permit No. 15

FIRST CLASS MAIL

Membership Renewal Notice

This is your **last** issue of the *Crystal Ball*—if the date on your address label reads **4-88**.
Please renew now!