


Cambridge Crystal Ball

Published monthly by the National Cambridge Collectors, Inc.
to encourage and report the discovery of the elegant and boundless product
of the Cambridge Glass Company of Cambridge, Ohio

Issue No. 187

November 1988

From The President's Desk

Members visiting the N.C.C. Museum of Cambridge Glass can readily see the museum has limited area left for additional displays. Existing display cases are filled almost to capacity and floor space for erecting more cases is at a premium. At the same time, the percentage of the output from the Cambridge factory represented in the current displays is small. It has been estimated some 5,000 molds were used between 1903 and 1958. Add to this all the colors, opaque and transparent, the etchings and the myriad of cuttings and it quickly becomes apparent the Museum does not begin to cover all Cambridge Glass Company wares.

I am by no means being critical of the Museum. In its current state, we do have a fairly representative display of the output from the factory on Morton Avenue. Ranging from numerous items dating to the Near Cut years, to samples of the last lines produced, it is a nucleus on which to build. My point is, we must look forward to the future and the direction we, as an organization, want the museum to take.

Obviously, if we want to increase the amount of glass on display, then additional display areas must be provided. Several options are available, such as expand the existing building, erect another building on the same site, or look for a new site, to name but three.

If we are to increase our displays, then the question arises, from where is the glass to come? The N.C.C. does own a core collection of Cambridge Glass, but the majority of the wares on display at the Museum are from private collections. Are we to continue to rely on loans from member collections, or is the N.C.C. going to build up its permanent collection?

Buildings and glass take money and if we are to proceed with expanding the museum, then in the coming months we must plan and initiate a major fund raising drive. Construction costs continue to rise, as does the value of Cambridge glass and the longer we wait, the more expensive our undertaking, whatever direction it may take, will be.

The subject of museum expansion and fund raising will be on the agenda of upcoming meetings of your Board of Directors. Future issues will carry news of their decisions regarding this important issue.



continued on page 6

Cambridge Crystal Ball

Official publication of National Cambridge Collectors, Inc., a non-profit corporation with tax exempt status. Published once a month for the benefit of its members.

Membership is available for individual members at \$13 per year and additional members (12 years of age and residing in household) at \$3 each. All members have voting rights, but only one *Crystal Ball* will be mailed per household.

Back issues of the *Crystal Ball* are available (beginning with Issue No. 1, May 1973) for members only. Cost: 60 cents each or 12 issues for \$7.

1988-89 Officers & Committee Chairpersons

President	Mark A. Nye
Vice-President	Cynthia A. Arent
Secretary	J.D. Hanes
Treasurer	William C. Smith
Sergeant-at-Arms	Marlene K. Snyder
Acquisition	Lynn Welker, Bill Smith, Mark Nye, Joy McFadden, J.D. Hanes
Budget & Finance	David B. Rankin
By-Laws	J.D. Hanes
Convention	Mark A. Nye
Membership	Phyllis D. Smith
Museum—Facilities	Willard P. Kolb
Museum—Interior	Lynn Welker, Janice Hughes, Marybelle Moorehead
Non-Glass Items	J.D. Hanes, Cindy Arent, Judy Momirov
Nominating	Willard P. Kolb
Program	R. Clarke West
Project	William C. Smith
Public Relations	William C. & Phyllis D. Smith
Publicity	Cynthia A. Arent
Study Group Advisor	Phyllis D. Smith
1989 Auction	Lynn M. Welker
1989 Antique Show	Joy R. McFadden
1989 Flea Market	Marybelle Moorehead
Crystal Ball Editor	Phyllis D. Smith

Classified Advertising Rates

10 cents per word \$2.00 minimum
We cannot mix type size in classified advertisements. Abbreviations and initials will count as words. Payment in full **must** accompany all ads.

Display Advertising Rates

(Camera-ready ads preferred)	Members	Non-Members
1/8 page (9 items)	\$ 6.00	\$10.00
1/4 page (20 items)	10.00	15.00
1/2 page (20 items)	18.00	25.00
3/4 page	25.00	35.00
Full page (50 items)	33.00	45.00

Dealers Directory

Five-line maximum \$18.00 for 12 months

Cambridge *Crystal Ball* assumes no responsibility for items advertised and will not be responsible for errors in price, description or other information.

Advertising copy, articles, club news and notices must be in our hands by the 10th of each month to assure publication in our next issue.

Paid advertisements containing reproductions or new glass will not knowingly be accepted for publication.

Opinions or information stated in any signed article or letter printed in the *Crystal Ball* are those of the authors and may or may not agree with National Cambridge Collectors, Inc. The Editor reserves the right to refuse and to edit any material submitted for publication so as to conform with the editorial style of the *Crystal Ball*.

Please Address All Correspondence to:

National Cambridge Collectors, Inc.

P.O. Box 416 Cambridge, Ohio 43725

President — Mark A. Nye, 305/221-0343

Secretary — J.D. Hanes, 614/432-6794

Editor — Phyllis Smith, 513/323-3888

Please notify us immediately of any change in your address.

Please enclose an SASE when requesting information.

CAMBRIDGE GLASS BOOKS FOR SALE

by National Cambridge Collectors, Inc.

* **COLORS IN CAMBRIDGE GLASS**
(128 pages - 60 color plates - fully indexed)
Hardbound with Price Guide \$19.95

* **1930-34 CAMBRIDGE GLASS CO. CATALOG REPRINT**
(250 page reprint of original catalog)
Hardbound with Price Guide \$14.95

* **1956-58 CAMBRIDGE GLASS CO. CATALOG REPRINT**
(164 page reprint of original catalog)
Paperback \$6.95

1985 COMBINED PRICE GUIDE
for 1930-34 & 1949-53 catalog reprints Postpaid \$5.75

*NCC MEMBERS ONLY: *These publications are available at 10% discount*

by Bill & Phyllis Smith

CAMBRIDGE GLASS 1927-1929
(66 page reprint of original catalog)
Paperback with Identification Guide \$7.95

by Mark Nye

CAMBRIDGE STEMWARE
(95 Stemware lines with 107 illustrations)
Paperback \$14.95

by Cambridge Buffs Study Group

NEARCUT
(108 page reprint of 1910 Cambridge Catalog)
Paperback with Price Guide \$9.95

by Mary, Lyle and Lynn Welker

CAMBRIDGE GLASS CO.
(120 pages of reprint from 8 old catalogs)
Paperback \$6.95

CAMBRIDGE, OHIO GLASS IN COLOR II
Spiralbound \$5.95

by Harold and Judy Bennett

1903 CAMBRIDGE GLASS CO. CATALOG REPRINT
(106 page reprint of an original catalog)
Paperback \$7.50

Address your orders to:

BOOKS

National Cambridge Collectors, Inc.

P.O. Box 416

Cambridge, OH 43725

Please add \$1.00 (P & I) per order.

(Not required for Price Guide)

Ohio residents please add 6% state sales tax.

DEALER DISCOUNTS AVAILABLE - PLEASE WRITE!

NCC Museum of Cambridge Glass

The museum is located on U.S. Route 40, one-eighth mile east of I-77 near Cambridge. Hours: 12 noon to 4 p.m., Wednesday through Sunday (March through October). Phone 614/432-4245. Closed Easter and July 4th.

N. C. C. CHRISTMAS SHOPPING SUGGESTIONS

Earliest postmark will determine purchaser in case of insufficient quantities.

BOOKENDS

(add \$3 each for p&h)

- #1129 LION, Amber, 2nd of the
Museum Reissue Series.....\$ 38
- #1129 LION, Amber Frosted,
Special Treatment Item.....\$ 75
- #1128 SCOTTY, Black Frosted
3rd of the Museum Reissue Series...\$ 30
- #1119 EAGLE, Cobalt Blue,
4th of the Museum Reissue Series...\$ 30

CONVENTION FAVORS

(add \$1.50 each for p&h)

- 1980 - Paperweight, Windsor Blue,
w/N.C.C. Logo & date.....\$ 16
- 1982 - Paperweight, Gold Krystol
w/N.C.C. Logo & date.....\$ 14
- 1983 - Georgian Tumbler, 2½ oz.,
Cobalt Blue, marked "10th Anniver-
sary 1973 N.C.C. 1983".....\$ 18
- 1984 - Georgian Tumbler, 2½ oz.,
Pink, marked "N. C. C." no date....\$ 12
- 1985 - Georgian Tumbler, 2½ oz.,
Amber, w/Club Logo & date.....\$ 14
- 1986 - Georgian Tumbler, 2½ oz.,
Gold Krystol, w/N.C.C. Logo & date.\$ 14
- 1987 - Nearcut Marjorie Punch Cup
Light Blue, marked "N.C.C. Conven-
tion 1987" in gold.....\$ 16
- 1988 - Cambridge Square Cigarette
Holder, Cobalt Blue, marked "N.C.C.
Convention 1988" in gold.....\$ 20

CUP PLATES

(add \$1 each p&h)

- Crystal, Cobalt, Amethyst, Teal
w/bulldog replica & N.C.C. name
(limited in each color).....ea..\$ 7

ORIGINAL STOCK CERTIFICATES from the

CAMBRIDGE GLASS COMPANY

(price includes p&h)

These original certificates are
suitable for framing.....\$ 5

T-SHIRTS w/N.C.C. LOGO

(add \$1 each p&h)

Yellow/orange T-Shirt w/N.C.C. Logo
in black - sizes: S - M - L.....\$ 5

MISCELLANEOUS

(prices include p&h)

Post Cards

White card w/factory photo and
"The Home of NEAR-CUT" in
black ink.....\$ 1

Reprints of original Cambridge
booklet, pamphlets & leaflets
Booklet "Cambridge Arms.....\$ 4

Pamphlet "Rosepoint".....\$ 2

Pamphlet "Cambridge Square".....\$ 2

Leaflet "Rondo".....\$ 1

Leaflet "Laurel Wreath".....\$ 1

Leaflet "Lynbrook".....\$ 1

Marble (NEW 1988) Milk Glass
Marked "The Cambridge Glass Co.,
Est. 1901".....\$ 15

BOOKS

See "BOOKS FOR SALE" on page 2
for additional suggestions.

OHIO RESIDENTS add 6% State Sales Tax

Mail your order, along with your check
or money order, to:

NATIONAL CAMBRIDGE COLLECTORS, INC.
P.O. BOX 416
CAMBRIDGE, OH 43725



Transparent Colors

PART I

by MARK A. NYE

The Age of Color at Cambridge began with the introduction of Azurite in 1922 and, the past two months have seen a discussion of the Cambridge opaque colors. (Note: Cambridge did produce colored glass prior to the 1920s and this includes opaque and transparent colors along with Carnival glass. However, little of this ware is seen today and there is about as much documentation as there are examples. Individuals interested in these early colors are referred to "Colors in Cambridge Glass" published by the National Cambridge Collectors.) This month we turn our attention to the transparent colors produced by Cambridge, beginning in the early 1920s and continuing until the demise of the company in the late 1950s.

Introduction of the first of the second generation transparent colors occurred in 1923 and the following appears to have been the "birth announcement" having appeared in the May 14, 1923 issue of China, Glass & Lamps.

"CAMBRIDGE HAS NEW LINE OF COLORED GLASS SALAD PLATES

An extensive line of salad plates in colored glass recently has been added to the lines of the Cambridge Glass Co., Cambridge, O. The plates come in 'Ebony,' 'Azurite,' 'Helio,' 'Primrose Yellow' and in new shades of topaz, light green and mulberry. Made of colored glass, the plates have both plain and star bottoms. The Cambridge factory offers the plates in plain colors as well as in decorations such as contrasting colored edges and in light cutting and gold encrustations.

In stemware, the Cambridge line has been increased by additions in colored glass. The new shades are topaz, light green and mulberry. The most wanted shapes come in the new colors, which should be of interest to those desiring something new and attractive in stemware."

The shades referenced as topaz and mulberry are those colors now known by the same names, while light green is now known as Light Emerald.

Crockery and Glass Journal, in the issue dated October 18, 1923, and published 65 years ago this month, had this to say about the new colors:

". . . In transparent colors new things in emerald, mulberry and topaz, include the popular items in the fancy lines, such as console sets, jugs, plates, comports, and stemware."

January 14, 1924 saw China, Glass & Lamps printing the following paragraph regarding the new transparent colors:

"A new line of amber glass, deep and rich in tone, is offered for the first time. This is flat ware, and the pattern looks like very wide optic, but is pressed into the flange of the bowl. There is a very complete line of mulberry, topaz and emerald glass, of candlesticks, jugs, bowls, tumblers and stemware that is colorful and interesting. A very comprehensive line of colored glass salad plates made us wonder why salad was ever served on any other sort of plate, for the pale green of lettuce would enhance the value of these colors, and the glass would make the salad all the more tempting. These plates match every style of glassware they make. Another interesting pattern in colored glassware had reserves in the gold border where flowers of the undecorated glass showed through. The various matching items are available in many colors."

"There are quite a number of new things at the Cambridge Glass Co.'s display room at 184 Fifth Avenue, which have just been received. Two weeks ago round salad and dessert plates of glass were received in a variety of colors. The dessert plates have a rim raised in the center to keep the sherbet glasses from slipping. Both high and low sherbets are available with these plates. These have sold particularly well during the two weeks they have been here, and a day or so ago samples of the new salad and dessert plates in oval shape arrived. These are even more attractive than the round ones. They are made in a variety of transparent colors."

". . . Another color which seems to have quite general popularity is their cobalt blue, which is shown both plain and with encrustations of white and yellow gold, in a wide range of pieces and shapes. One table was

continued

continued

devoted to console sets in all the lovely colors, both clear and opaque, that Cambridge makes." Excerpt from a column in the April 7, 1924 issue of China, Glass & Lamps.

The color cobalt blue mentioned in the preceding is a color known to Cambridge collectors as Cobalt Blue I. This is the first known trade journal reference to this color; however, there is no definite reference to it being new at the time.

The following month saw the following published:

"Just two days ago, the Cambridge Glass Co., 184 Fifth Ave., received the first samples of very attractive boudoir sets, consisting of a small covered jug, one glass and a well shaped tray, which are being made up in emerald, amber, mulberry, topaz and crystal, with band decorations and encrustations. At the same time, the first samples of gold encrusted colored stemware arrived -- in cobalt, amber, mulberry and emerald."

Here again, cobalt is the color now referred to as Cobalt Blue I, and emerald is Light Emerald. The other colors are known today by the names given.

Many collectors would like examples of the ware described in this paragraph that first appeared in the November 6, 1924 issue of Crockery and Glass Journal.

"'Cambridge Glass Co. has New Numbers' Mah Jong decorations in gold on transparent glass in iced tea sets, party or luncheon sets, boudoir sets, etc., are a new departure of the Cambridge Glass Co., Cambridge, O. Many attractive numbers in mulberry, blue, green, topaz, and amber, all with this new Chinese effect decoration are to be seen at the show-rooms of the concern's N. Y. office, 184 Fifth Ave., of which Alex Menzies is manager. . . "

"Living up to its reputation of introducing each January most interesting developments in table and decorative glassware, the Cambridge Glass Co. . . . has on display in Room 728 at the Fort Pitt Hotel unusual lines in block optic in the 'Rubina' and new transparent colors, plain and decorated, are among the outstanding offerings in glassware.

In 'Rubina' glass, which can be had both plain

and block optic, new shapes in comports, bowls, vases, candlesticks and other pieces have been developed. Especially attractive is the refreshment set in block optic 'Rubina.'



124-68 oz.

500/122-56 oz.

Two OPTIC JUGS from the 1920s

This new glass is not one color but a natural three or more tone glass in which the predominating shades are red, green and blue, each tone diverging into the other." January 12, 1925 issue of China, Glass & Lamps.

The next new color was announced during the summer of 1925 (at the very least, the first printed word about the color appeared then) and was described as follows in the column 'New York Trade Notes,' authored by Jane Littell and published in China, Glass & Lamps. The article also contained information regarding other new additions to the Cambridge line.

"An unusual number of lovely new things have arrived at the show rooms of the Cambridge Glass Co. . . since my last visit. The most important is a new color in glass known as Peachblo. It is made up in stemware and in footed and straight sided tumblers, in wide optic and may be had either undecorated, or with an encrusted band and line treatment.

The color is absolutely unique in modern glass. It has the warmth and sparkle of amber, and the gayety of the du Barry rose, and is different from these, while combining the charms of both. The name Peachblo describes it perfectly.

Mr. Graham tells me that he will soon have

continued on page 6

COLORS continued from page 5

samples of ice tea sets, water sets, vanity sets, salad sets, etc., in the lovely new color. Of course, launching a new color is a serious matter, but I don't see how this concern can avoid making their full line of fancy ware in the new Peachblo.

The other two new lines are of equal importance. One is a full table service, with the exception of vegetable dishes, of undecorated colored glass. A table is set with this line in amber and it rates a lot of adjectives. There are service plates, salad plates, bread and butter plates, dessert plates, soup plates, grape fruits, sugars and creams, cold meat platters, cups and saucers, and stemware, all matching. Shown against a background of white, the effect is charming. For hot weather use, for tea, for luncheon, this service of glass is a novelty that ought to appeal rather widely to women who like to have unusual services for special occasions. It will never, of course, displace the elaborate china for formal occasions, nor is it intended to, but it has a use and charm all its own."

To be continued

PRESIDENT'S DESK. . . continued from page 1

Autumn has come to South Florida even tho most individuals, other than those of us who live here, would hardly notice the subtle changes in temperature and weather. The change is extremely slow and subtle, with morning temperatures of 70 degrees instead of mid-to-high 70's, less rain and lower humidity. Still, I miss fall in the north and am looking forward to cool or cold weather when I go to Cambridge for the November Quarterly meeting. I hope all of you have made plans to attend since it is now too late to do so, as the deadline for reservations was October 28th.

Once the Quarterly meeting is over, can Thanksgiving, Christmas and the annual Auction be far behind? As for Christmas, be sure to look on page 3 for your "Cambridge Christmas Shopping List." The annual Auction will be held Saturday, February 25, 1989, at the Shenandoah Inn, Old Washington, Ohio. Plan now to attend!

Once the auction is over, then it is Conven-

tion time. Next month "yours truly," puts on his other hat, that of Convention Chairman, and announces preliminary plans for the 1989 Convention. Unfortunately, time waits for no one and planning for this event must begin this far in advance.

Anyone planning a trip to South Florida this winter, or at anytime, wishing to get together for a "Cambridge Session," I urge you to give me a call, or drop me a line in care of the N.C.C. P.O. Box. I would enjoy meeting members that are unable to make the meetings in Ohio, or seeing old friends. My schedule is sometimes rather hectic, but there is always time for Cambridge.

Have a Happy Thanksgiving!

1989 DATES FOR YOUR CALENDAR!

QUARTERLY MEETING - PREVIEW
and ALL-CAMBRIDGE GLASS AUCTION
February 24 & 25

N.C.C. CONVENTION
and ANTIQUE SHOW & SALE
JUNE 22 - 25

QUARTERLY MEETING - PICNIC
Saturday, August 5

QUARTERLY MEETING - DINNER
Saturday, November 4

Complete information on all of these meetings will be given in future issues of the Cambridge CRYSTAL BALL.

MUSEUM CLOSES FOR WINTER

November 1st will mark the closing of the N.C.C. Museum for the winter season. It will probably reopen the weekend of our annual Auction (February 24 & 25), for the convenience of members in town for the Auction, but this will be announced later.

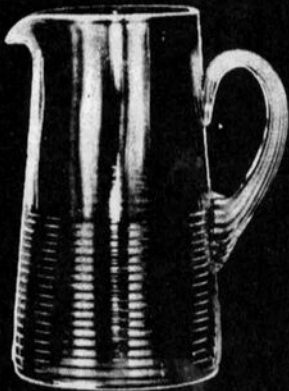
It will definitely reopen on MARCH 1st!

TALLY-HO FOLDER

The folder on Tally-Ho reproduced on the following eight pages, is courtesy of Bill and Phyllis Smith.



The Cambridge Glass Company



1402/50—74 oz. Jug Tankard
C—A—Fg: PI \$20.00—E/\$37.50
Rb—Ame: PI \$20.00
Car: PI \$40.00



1402/49—88 oz. Jug
C—A—Fg: PI \$20.60—E/\$38.00
Rb—Ame: PI \$20.60
Car: PI \$41.25



1402/37—2 1/2 in. Hid. Tumbler
C—A—Fg: PI \$3.00—E/\$8.30
Rb—Ame: PI \$3.00
Car: PI \$4.15



1402/93 Pretzel Jar & Cover
C—A—Fg: PI \$19.25—E/\$43.00
Rb—Ame: PI \$19.25
Car: PI \$33.00



1402/38—34 oz. Decanter G. S.
C—A—Fg: PI \$20.00—E/\$37.50
Rb—Ame: PI \$20.00
Car: PI \$33.00



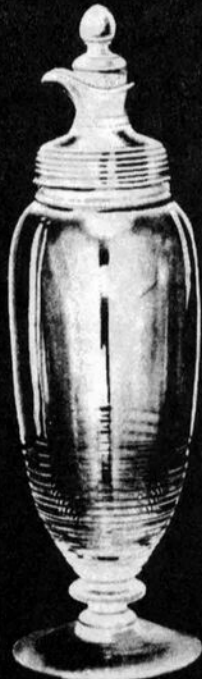
1402/39—34 oz. Hid. Decanter G. S.
C—A—Fg: PI \$24.75—E/\$43.00
Rb—Ame: PI \$24.75
Car: PI \$49.50



1402/52 Ice Pail w/ Chrom. Hdl.
C—A—Fg: PI \$20.60—E/\$32.50
Rb—Ame: PI \$20.60
Car: PI \$35.50



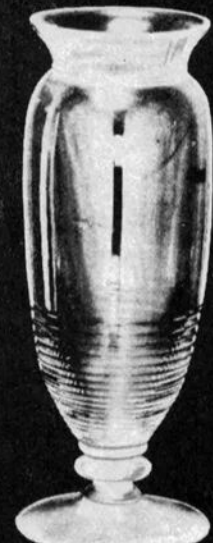
1402/87 Cookie Jar & Cover
C—A—Fg: PI \$24.75—E/\$44.50
Rb—Ame: PI \$24.75
Car: PI \$44.00



1402/48—50 oz. Fid. Cocktail Shaker w/No. 5 Top
C—A—Fg: PI \$90.00—E/\$113.70
Rb—Ame: PI \$90.00
Car: PI \$127.50



1402/51—50 oz. Hid. & Fid. Cocktail Shaker w/No. 5 Top
C—A—Fg: PI \$105.00—E/\$132.65
Rb—Ame: PI \$105.00
Car: PI \$142.50



1402/79—12 in. Fid. Vase
C—A—Fg: PI \$33.00—E/\$56.75
Rb: PI \$33.00
Car: PI \$66.00

C—Crystal, A—Amber, Fg—Forest Green, Rb—Royal Blue, Ame—Amethyst, Car—Carmen, E—Etched and PI—Plain.
All prices are per dozen, list subject to your usual discount.

Tally-Ho



1402/100
VALENCIA



1402/100
ELAINE



1402/100
MINERVA



3112
YE OLDE IVY

Here are shown four Beautiful Deep Plate Etchings which may be had on the Articles shown in this folder.

Write for prices and discounts.

The Cambridge Glass Company
Cambridge, Ohio



The Cambridge Glass Company



1402/80 - 6 in. Candlestick
C-A-Fg: PI \$13.15 - E/\$19.00
Rb: PI \$13.15
Car: PI \$20.00



1402/76 - 5 in. Candlestick
C-A-Fg-Rb: PI \$6.15
Car: PI \$8.25



1402/81 - 6 1/2 in. Candelabrum
C-A-Fg: PI \$39.50 - E/\$49.75
Rb: PI \$39.50
Car: PI \$48.00



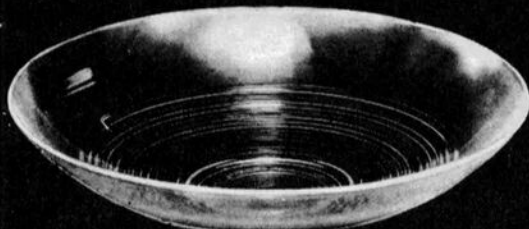
1402/71 - 10 1/2 in. 2 Hld. Bowl
C-A-Fg: PI \$19.25 - E/\$32.40
Rb-Amc: PI \$19.25
Car: PI \$33.00



1402/68 - 7 in. Bowl
C-A-Fg: PI \$8.25 - E/\$16.25
Rb: PI \$8.25
Car: PI \$16.00



1402/127 - 12 1/2 in. Bowl
C-A-Fg: PI \$18.00 - E/\$33.75
Rb-Amc: PI \$18.00
Car: PI \$33.00



1402/132 - 13 1/2 in. Salad Bowl
C-A-Fg: PI \$20.60 - E/\$36.50
Rb-Amc: PI \$20.60
Car: PI \$41.25



1402/125 - 12 1/2 in. Bowl
C-A-Fg: PI \$18.00 - E/\$33.75
Rb-Amc: PI \$18.00
Car: PI \$33.00



1402/88 - 11 in. Bowl
C-A-Fg: PI \$19.25 - E/\$35.00
Rb: PI \$19.25
Car: PI \$38.50



1402/121 - 14 1/2 in. Bowl
C-A-Fg: PI \$63.15 - E/\$126.30
Rb-Amc: PI \$63.15
Car: PI \$126.30



1402/128 - 10 1/2 in. Bowl
C-A-Fg: PI \$18.00 - E/\$33.75
Rb: PI \$18.00
Car: PI \$33.00



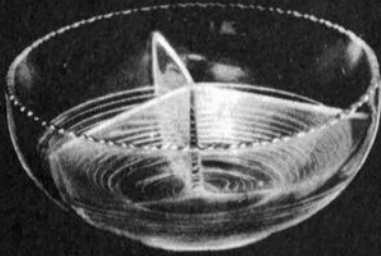
1402/64 - 10 1/2 in. Low Fld. Bowl
C-A-Fg: PI \$26.25 - E/\$44.50
Rb: PI \$26.25
Car: PI \$52.50



1402/70 - 10 1/2 in. Bowl
C-A-Fg: PI \$20.60 - E/\$33.75
Rb: PI \$20.60
Car: PI \$41.25

C-Crystal, A-Amber, Fg-Forest Green, Rb-Royal Blue, Amc-Amethyst, Car-Carmen, E-Etched and PI-Plain.
All prices are per dozen list, subject to your usual discount.

Cambridge, Ohio - - - U. S. A.



1402/131-8 1/2 in. 3 Compt. Bowl
C: PI \$22.50-E/\$31.00



1402/116 Salt & Pepper Shaker
(Prices are per Dozen Pairs)
C-A-Fg: PI \$8.25-E/\$18.00
Rb-Ame: PI \$8.25
Car: PI \$12.40



1402/33 Ftd. Sugar & Cream
(Prices are per Dozen Pairs)
C-A-Fg: PI \$10.50-E/\$26.25
Rb-Ame: PI \$10.50
Car: PI \$16.50



1402/101-9 in. Low Ftd. Comport
C-A-Fg: PI \$16.50-E/\$31.00
Rb: PI \$16.50
Car: PI \$27.50



1402/78-6 oz. Punch Mug
C-A-Fg: PI \$4.60-E/\$9.90
Rb: PI \$4.60
Car: PI \$6.00



1402/19-Cup and Saucer
C-A-Fg: PI \$7.90-E/\$19.75
Rb-Ame: PI \$7.90
Car: PI \$10.10



1402/104-14 in. Cheese & Cracker
C-A-Fg: PI \$56.00-E/\$89.00
Rb: PI \$56.00
Car: PI \$86.25



1402/124-11 1/2 in. Cheese & Cracker
C-A-Fg: PI \$27.50-E/\$48.75
Rb-Ame: PI \$27.50
Car: PI \$43.50

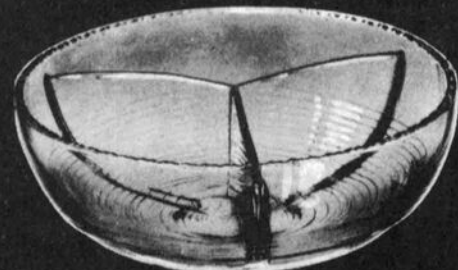
Also
1402/129-13 1/2 in. Cheese & Cracker
Same as above except plate has turned up edge

Also
1402/101-18 in. Cheese & Cracker
C-A-Fg: PI \$79.50-E/\$157.00
Rb: PI \$79.50
Car: PI \$154.00
and
1402/101/102-17 1/2 in. Cheese & Cracker
Same as 1402/101 except plate has turned up edge



1402/77-13 in. Ftd. Punch Bowl
C-A-Fg: PI \$66.00-E/\$132.00
Rb: PI \$66.00
Car: PI \$132.00

1402/111 Punch Ladle
C: PI \$16.50
Car: PI \$33.00

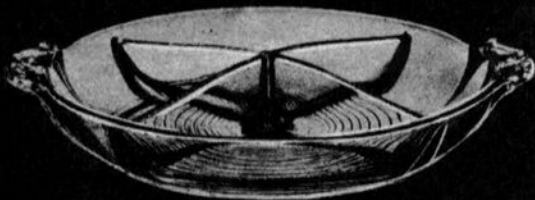


1402/122-10 1/4 in. 3 Compt. Bowl
C: PI \$30.00-E/\$45.00

C-Crystal, A-Amber, Fg-Forest Green, Rb-Royal Blue, Ame-Amethyst, Car-Carmon, E-Etched and PI-Plain
All prices are per dozen, 1st, subject to your usual discount



The Cambridge Glass Company



1402/92—10 in. 2 Hld. 4 Compt. Relish
C-A-Fg. PI \$22.50—E.\$36.00
Rb. PI \$22.50
Car. PI \$45.00



1402/91—8 in. 2 Hld. 3 Compt. Relish
C-A-Fg. PI \$15.00—E.\$23.50
Rb. PI \$15.00
Car. PI \$30.00



1402/113—16 oz. Hld. Stein
C-w/Amber, Dp, Fg Rb, Ame Hdl., PI \$10.55
C-w/Car. Hdl.: PI \$12.20



1402/36—14 oz. Hld. Stein
C-A-Fg. PI \$8.25—E.\$13.55
Rb-Ame. PI \$8.25
Car. PI \$9.90
GK. PI \$9.10



1402/112—16 oz. Tumbler
C-A-Fg. PI \$7.40—E.\$12.10
Rb-Ame. PI \$7.40



1402/35—12 oz. Hld. Stein
C-A-Fg. PI \$8.25—E.\$13.55
Rb-Ame. PI \$8.25
Car. PI \$9.90
GK. PI \$9.10



1402/130—13 1/2 in. 4 pc. Twin Salad Dr. Set
C-A-Fg. PI \$50.00—E.\$75.00
Rb. PI \$50.00
Car. PI \$83.50



1402/17 Sauce Boat, Plate & Ladle
C-A-Fg. PI \$13.75—E.\$28.25
Rb. PI \$13.75
Car. PI \$17.50



1402/95—4 pc. Twin Salad Dr. Set
C-A-Fg. PI \$30.70—E.\$46.00
Rb. PI \$30.70
Car. PI \$42.00

Also
1402/126—13 1/2 in. Plate Only (turned up edge)
C-A-Fg. PI \$22.50—E.\$39.60
Rb. PI \$22.50
Car. PI \$45.00

1402/16 Sauce Boat Only
C-A-Fg. PI \$5.50—E.\$12.10
Rb. PI \$5.50
Car. PI \$7.60

1402/95—3 pc. Twin Salad Dr. Set
(Bowl w/2 Ladies)
C-A-Fg. PI \$22.00—E.\$28.60
Rb. PI \$22.00
Car. PI \$30.00



1402/97—18 in. 4 pc. Salad Dr. Set
C-A-Fg. PI \$90.00—E.\$161.00
Rb. PI \$90.00
Car. PI \$165.00

1402/95 Twin Salad Dr. Bowl Only
C-A-Fg. PI \$18.50—E.\$23.10
Rb. PI \$18.50
Car. PI \$24.75

Also
1402/96/102—17 1/2 in. 4 pc. Set same as above
except plate has turned up edge

1402/96—3 pc. Ftd. Twin Salad Dr. Set
(Bowl w/2 Ladies)
C-A-Fg. PI \$27.50—E.\$35.40
Rb. PI \$27.50
Car. PI \$38.50

1402/96 Ftd. Twin Salad Dr. Bowl Only
C-A-Fg. PI \$22.00—E.\$30.00
Rb. PI \$22.00
Car. PI \$33.00



1402/29—17 1/2 in. Sunday Nite Supper Plate
(turned up edge)
C-A-Fg. PI \$63.15—E.\$126.30
Rb-Ame. PI \$63.15
Car. PI \$126.30

Also
1402/102—17 1/2 in. Plate w/Seat In Center

C-Crystal, A-Amber, Fg-Forest Green, Rb-Royal Blue, Ame-Amethyst, Car-Carmen, E-Etched and PI-Plain
All prices are per dozen list, subject to your usual discount.

Cambridge, Ohio - - - U. S. A.



1402/62-7 In. Low Ftd. Comport
C-A-Fg: PI \$13.75-E/\$28.25
Rb: PI \$13.75
Car: PI \$24.75



1402/30-4 1/2 In. Ftd. Fruit Saucer
C-A-Fg: PI \$4.15-E/\$10.00
Rb: PI \$4.15
Car: PI \$5.50



1402/32-6 1/2 In. Grape Fruit
C-A-Fg: PI \$5.50-E/\$12.10
Rb: PI \$5.50
Car: PI \$8.25



1402/14 Finger Bowl
C-A-Fg: PI \$5.50-E/\$12.10
Rb: PI \$5.50
Car: PI \$7.60



1402/115-Cig. Box w/Hdl.
C-A-Fg-Rb: PI \$16.50
Car: PI \$24.75



1402/86-2 pc. Ash Well
C-A-Fg-Rb: PI \$16.50
Car: PI \$24.75



1402/86-4 In. Hld. Ash Tray
C-A-Fg-Rb: PI \$8.25
Car: PI \$13.75



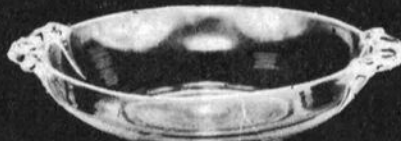
1402/47-4 In. Coaster
C-A-Fg-Rb-Ame: PI \$2.75
Car: PI \$4.15



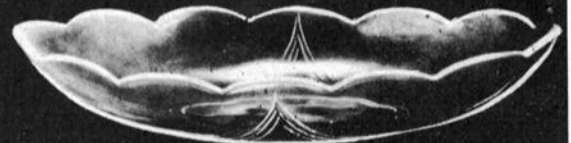
1402/85-4 In. Ash Tray
C-A-Fg-Rb: PI \$4.15
Car: PI \$6.15



1402/90-6 In. 2 Hld. 2 Compt. Relish
C-A-Fg: PI \$6.25-E/\$13.00
Rb-Ame: PI \$6.25
Car: PI \$12.50



1402/89-6 In. 2 Hld. Nappy
C-A-Fg: PI \$5.50-E/\$12.10
Rb-Ame: PI \$5.50
Car: PI \$11.00



1402/94-12 In. Celery
C-A-Fg: PI \$15.00-E/\$27.50
Rb: PI \$15.00
Car: PI \$22.50



1402/66-6 In. Hl Ftd. Comport
C-A-Fg: PI \$8.25-E/\$15.00
Rb-Ame: PI \$8.25
Car: PI \$10.50



1402/67-6 1/2 In. Tall Comport
C-A-Fg: PI \$13.75-E/\$25.60
Rb: PI \$13.75
Car: PI \$24.75



1402/103-6 In. Hl Ftd. Comport
C-A-Fg: PI \$16.50-E/\$28.50
Rb: PI \$16.50
Car: PI \$24.75

C-Crystal, A-Amber, Fg-Forst Green, Rb-Royal Blue, Ame-Amethyst, Car-Carmen, E-Etched and Pi-Plain.
All prices are per dozen, list, subject to your usual discount.



The Cambridge Glass Company



1402/10—3 oz. Cocktail
C—A—Fg: PI \$4.15—E/\$8.90
Rb: PI \$4.15
Car: PI \$6.15



1402/11—4 oz. Low Stem Cocktail
C—A—Fg: PI \$4.15—E/\$8.90
Rb: PI \$4.15
Car: PI \$6.15



1402/6—6 1/2 oz. Low Sherbet
C—A—Fg: PI \$4.40—E/\$9.15
Rb: PI \$4.40
Car: PI \$6.15



1402/12—2 1/2 oz. Wine
C—A—Fg: PI \$3.85—E/\$8.60
Rb: PI \$3.85
Car: PI \$5.50



1402/13—1 oz. Cordial
C—A—Fg: PI \$3.85—E/\$8.60
Rb: PI \$3.85
Car: PI \$5.50



1402/9—4 1/2 oz. Claret
C—A—Fg: PI \$4.15—E/\$8.90
Rb: PI \$4.15
Car: PI \$6.15



1402/4—10 oz. Lunch Goblet
C—A—Fg: PI \$5.00—E/\$9.75
Rb: PI \$5.00
Car: PI \$6.90



1402/8—5 oz. Low Stem Tomato or Orange Juice
C—A—Fg: PI \$4.15—E/\$8.90
Rb: PI \$4.15
Car: PI \$6.15



1402/44—15 oz. Tumbler
C—A—Fg: PI \$5.00—E/\$9.75
Rb—Ame: PI \$5.00
Car: PI \$6.90



1402/43—10 oz. Tall Tumbler
C—A—Fg: PI \$3.95—E/\$8.70
Rb—Ame: PI \$3.95
Car: PI \$5.90



1402/46—10 oz. Table Tumbler
C—A—Fg: PI \$3.95—E/\$8.70
Rb—Ame: PI \$3.95
Car: PI \$5.90



1402/41—5 oz. Tumbler
C—A—Fg: PI \$2.90—E/\$7.65
Rb—Ame: PI \$2.90
Car: PI \$4.25



1402/42—7 oz. O. F. Tumbler
C—A—Fg: PI \$3.70—E/\$8.45
Rb—Ame: PI \$3.70
Car: PI \$5.60



1402/40—2 1/2 oz. Tumbler
C—A—Fg: PI \$2.65—E/\$7.40
Rb—Ame: PI \$2.65
Car: PI \$4.00



1402/1—18 oz. Goblet
C—A—Fg: PI \$8.25—E/\$13.00
Rb—Ame: PI \$8.25
Car: PI \$11.00



1402/2—14 oz. Goblet
C—A—Fg: PI \$6.90—E/\$11.65
Rb—Ame: PI \$6.90
Car: PI \$10.40



1402/3—10 oz. Goblet
C—A—Fg: PI \$5.50—E/\$10.25
Rb—Ame: PI \$5.50
Car: PI \$6.90



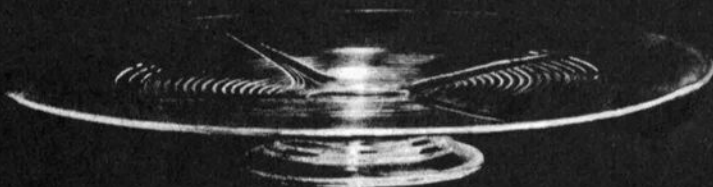
1402/7—6 oz. Tall Stem Tomato or Orange Juice
C—A—Fg: PI \$4.40—E/\$9.15
Rb: PI \$4.40
Car: PI \$6.15



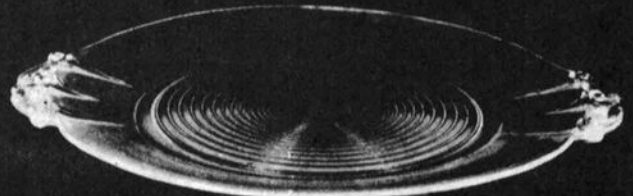
1402/5—7 1/2 oz. Tall Sherbet
C—A—Fg: PI \$5.50—E/\$10.25
Rb: PI \$5.50
Car: PI \$6.90

C-Crystal, A-Amber, Fg-Forest Green, Rb-Royal Blue, Ame-Amethyst, Car-Carmen, E-Etched and PI-Plain.
All prices are per dozen, list, subject to your usual discount.

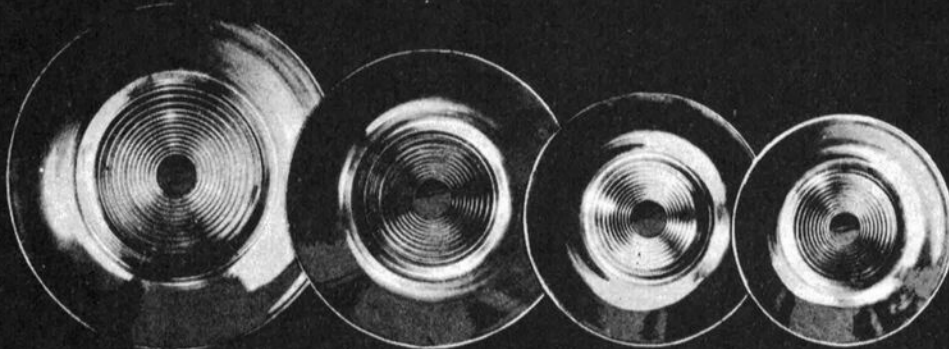
Cambridge, Ohio - - - U. S. A.



1402 119 - 18 in. Ftd. Week End Supper Plate
 C - A - Fg: PI \$75.00 - E \$150.00
 Rb - Ame: PI \$75.00
 Car: PI \$150.00



1402 34 - 11 in. 2 Hld. Sandwich Plate
 C - A - Fg: PI \$19.25 - E \$33.75
 Rb - Ame: PI \$19.25
 Car: PI \$33.00



1402 24 - 9 in. Dinner Plate
 C - A - Fg: PI \$11.35 - E \$22.50
 Rb: PI \$11.35
 Car: PI \$19.75

1402 23 - 8 in. Salad Plate
 C - A - Fg: PI \$8.70 - E \$17.25
 Rb - Ame: PI \$8.70
 Car: PI \$11.99

1402 22 - 7 in. Tea Plate
 C - A - Fg: PI \$6.20 - E \$14.10
 Rb - Ame: PI \$6.20
 Car: PI \$7.90

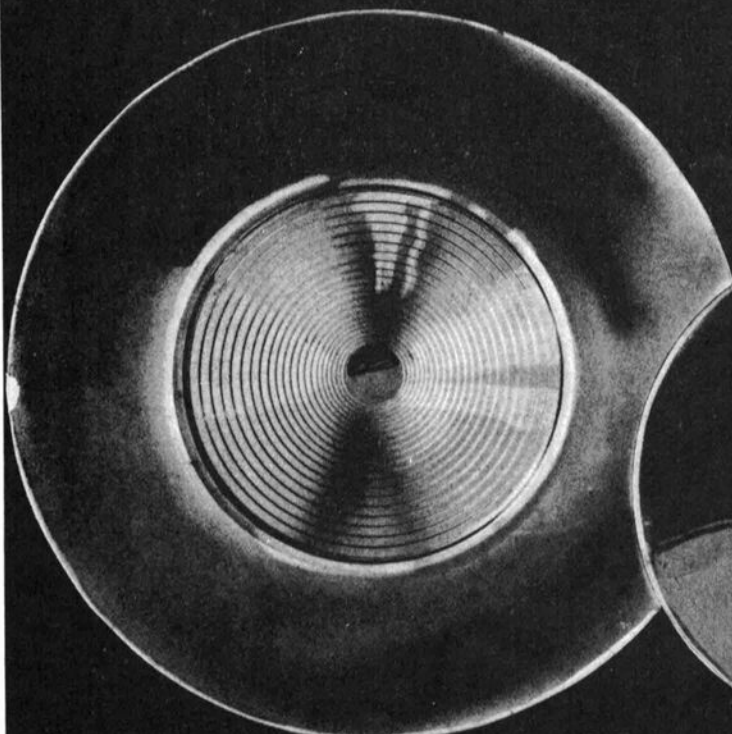
1402 21 - 6 in. B and B Plate
 C - A - Fg: PI \$4.60 - E \$11.20
 Rb - Ame: PI \$4.60
 Car: PI \$6.30



1402 15 Fingerbowl Plate
 C - A - Fg: PI \$6.20 - E \$14.10
 Rb: PI \$6.20
 Car: PI \$7.90

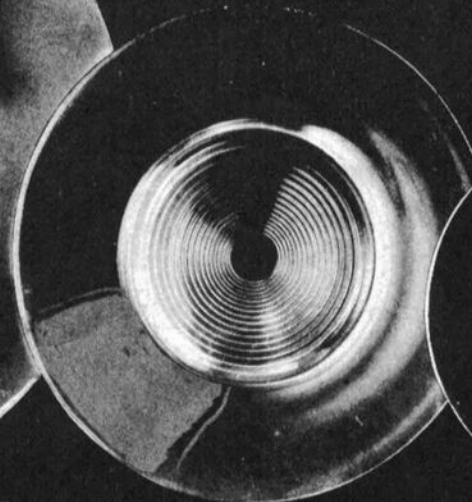


1402 99 - 7 in. 2 Hld. Plate
 C - A - Fg: PI \$6.15 - E \$12.75
 Rb - Ame: PI \$6.15
 Car: PI \$12.30



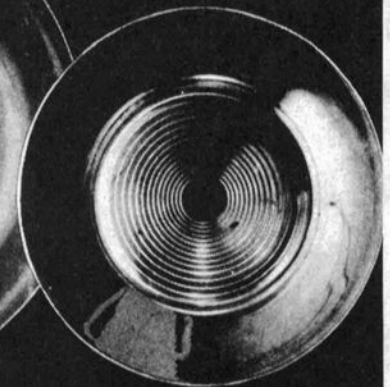
1402 28 - 18 in. Sunday Nite Supper Plate
 C - A - Fg: PI \$63.15 - E \$126.30
 Rb - Ame: PI \$63.15
 Car: PI \$126.30
 Also

1402 101 - 18 in. Plate w/4 in. seat in center



1402 26 - 14 in. Chop Plate
 C - A - Fg: PI \$39.50 - E \$58.00
 Rb: PI \$39.50
 Car: PI \$58.75
 Also

1402 104 - 14 in. Plate w/4 in. seat in center



1402 25 - 10 in. Service Plate
 C - A - Fg: PI \$15.00 - E \$28.15
 Rb: PI \$15.00
 Car: PI \$26.35

C-Crystal, A-Amber, Fg-Forcal Green, Rb-Royal Blue, Ame-Amethyst, Car-Carmen, E-Etched and PI-Plain
 All prices are per dozen, list subject to your usual discount.

— Classified —

BUYING: Moonlight Caprice or Rosepoint by Cambridge; Rose or Orchid by Heisey; & June, American, Fairfax, Versailles, Trojan, etc., by Fostoria. **Nadine Pankow**, 207 South Oakwood, Willow Springs, IL 60480. 312/839-5231.

FOR SALE: #1325 amethyst Decanter and stopper w/Farber holder & tray, and 6 #3109 1 oz. amethyst tumblers, all for \$60. #3400/156 Decanter and stopper in Farber holder: green \$35; amethyst \$35; and royal blue \$40. Rosepoint #3500/57 covered candy \$55. UPS Extra. **Robert Taylor**, 80 Middle St., Apt. 21, Gloucester, MA 01930. Phone: 508/281-4637

WANTED: To hear from other Royal Blue and Farberware collectors. Send me a copy of your want and duplicate lists. For Sale: #3011 amber cocktails (6) \$80 each. Available: carmen #1321 decanter with (6) #7966 2 oz. sherries; carmen Tally-Ho gold silk screened cocktail; carmen #3011 ash tray. **Bryce S. Crumb**, 1573 Alexandria Drive, Apt #6, Lexington, KY 40504.

FOR SALE: #3122 Diane etched: 7-1/4" goblets (11); 5" juices (12); sherbets (8); 6-1/4" underplates (5). Make offer. **Barbara Jennings**, 134 Garden Parkway, Henrietta, NY 14467.

WANTED: Perfect peachblo/dianthus pink bridge hounds. Also amber, amethyst and blue. **Mark E. Westerfield**, 6336 N. Frostwood Parkway, Peoria, IL 61615.

FOR SALE: Crystal Caprice. Pair of Candle Reflectors \$125 each or \$215 pair. Firm. UPS Extra. Call **Demi or Diane**, 11 am - 6 pm PST, Tues. - Sat. 916/363-8023.

URGENTLY WANTED: 1949-53 Cambridge Catalog Reprint and Welker Cambridge Book II. Will pay reasonable asking price. **Kel Moore**, 3710 Lake, Lansing, IL 60438.

CLASSIFIED ADS continued next column

— Classified —

FOR SALE: All Caprice Blue. 2 1/2" divided individual nut \$50 each. #92 salt/pepper \$80 pair. #2 tall sherbet, 7 oz. \$30 each. #188 tumbler, 2 oz. \$55 each. #180 tumbler, 5 oz. \$40 each. #249 vase \$100. Rose bowl, 8" with flower block \$150. Rose bowl 6", no block \$65. #103 celery \$200. #67 low candle \$30 pair. #207 cigarette box \$32. #207 cigarette box, base only \$12. #205 cigarette holder \$25. 3" hi. cream & sagar \$30 pair. 3" hi. sugar only \$12. #117 3 oz. oil, crystal stopper \$65. #100 5 oz. oil, all blue \$155. #17 cup/saucer \$32. #201 ice bucket \$125. Marmalade, base only \$30. UPS Extra. Call **Debi or Diane**, Tues. - Sat., 11 am - 6 pm PST. 916/363-8023.

MUST SALE: 150 piece Rosepoint collection. #3400 series - #3121 stem. All excellent condition and some rare pieces. Contact: **Mary Jo May**, 1657 Silverleaf Drive, Loveland, CO 80538 or call 303/669-8205.

The DAZE

★ SPECIAL OFFER to NCC friends \$2. off the 1 year subscription price, when on this form or copy of.

The Original, National monthly newspaper dedicated to the buying, selling & collecting of colored glassware and china including Depression Glass and the Elegant Glass (Cambridge, Heisey, Fostoria etc.) . We educate and inform you each month with feature articles by top notch columnists, readers "finds", club happenings, show news and a multitude of ads. Find those missing pieces to your 30s, 40s or 50s pattern. Can't identify it? Perhaps we can help. "Keep up with what's happening with a subscription to the DAZE. Buy, sell or trade from the convenience of your easy chair.

Name _____ Street _____

City _____ State _____ Zip _____

1 yr. \$15.00 2 yrs. \$29.00 \$1.75 single current copy

Check enclosed MasterCard Visa

Exp. date _____ Card No. _____

Signature _____

Orders to D.G.D., Box 57NC, Otisville, MI 48463

Please allow 30 days for your first issue— Canadian subscribers, add \$1. per year and subscribe by charge card only! This Special Offer May Not Be Combined With Other Special Offers

Mostly Heisey and Cambridge

16 CLAYTON PLACE ALBANY, NEW YORK 12209 518-482-6272

VASES

14" keyhole, amethyst (2) each.....	\$ 65
12" keyhole, amethyst.....	50
12" keyhole, Rosepoint.....	100
10" keyhole, Rosepoint bud vase, gold encrusted.....	80
10" bud vase, Chantilly.....	45
10" bud vase, Wild Flower.....	40
10" keyhole, crown tuscan.....	45
Ivy Ball, carmen.....	45
Ivy Ball, mocha.....	45

CAPRICE - MOONLIGHT BLUE

80 oz. Ball jug.....	\$ 185
Sherbets (6) each.....	25
3-light candlesticks, pair.....	115
ftd. candy dish w/cover.....	85
Approx. 13" bowls - #61, #62, #82, each.....	75
1-light candlesticks, pair.....	32
8" Ball vase.....	125
6" Ball vase.....	95

STEMS

#1066 goblets, carmen (8) each.....	\$ 24
#1066 3½ oz. cocktails, carmen (8) each.....	22
Nude 5 oz. cocktails, amethyst (2) each.....	95
Frosted Nude 3 oz. cocktail, amethyst.....	95

CROWN TUSCAN

7" round ash tray (2) each.....	\$ 25
5" round ash tray.....	22
Cigarette box and cover.....	45
Sea Shell relish, 3-compartment, ftd., gold decoration.....	55
Sea Shell #11 comport, 7", ftd., gold decoration.....	195
Candy box with cover.....	59
6" ftd., comport.....	40
7½" ftd., Ivy Ball.....	45
3" Swans (3) each.....	35

MISCELLANEOUS

Oyster plates and sauce cups (12 sets) each set.....	\$ 20
Farberware Nude candlesticks.....	50
Farberware candy dish, royal blue liner.....	45
#3400/160 12" bowl w/pair 1-light candlesticks, carmen - set.....	145
Gadron relish, center hld. 3-compartment, amber.....	25
12" Heron figure flower holder.....	150
Ram's Head bowl and candlesticks, blue carnival glass, made by Imperial in original Cambridge molds - set.....	149

RHODA CURLEY

UPS EXTRA

LYNN WELKER

2 E. Main St., New Concord, OH 43762
614/826-7414 614/826-4418

CARMEN

#317 5 oz. Georgian tumblers (4)...	\$ 10
#3175 Georgian sherbets (3).....	14
#1312 cigarette box, cryst. ft.....	55
#1337 cigarette holder, cryst. ft..	35
#34 Mt. Vernon compote, cryst. ft..	55
#52 Mt. Vernon decanter & (6) #22	
3 oz. ftd. wines (set).....	150

EMERALD

#165 Cascade candy & cover.....	\$ 40
#39 Cascade 3-pc. sugar/cream set..	40
#27 Everglade 7½" bowl.....	20

CAPRICE

#300 goblets (9).....	\$ 12
#300 tall sherbet/champagne (12)...	10
#300 cocktails (8).....	16
#184 12 oz. tumblers (4).....	15
#201 ice bucket.....	40
#17 mocha cup/saucer (5 sets).....	25
#300 moonlight blue sherbets (8)...	18
#117 milk glass cruet, rare.....	100

CHANTILLY

#3900/39 86 oz pitcher, rare.....	\$135
#3900/100 6 oz. cruet.....	60
Marmalade, sterling lid and base...	40

GLORIA

#3400/14 7", tall comport.....	\$ 55
#3400/70 3½" cranberry, signed (2).	30

MINERVA

#3500 oyster cocktails (4).....	\$ 14
#3500/64 10" 3-comp. relish.....	35

ROSEPOINT

#3121 12 oz. ice teas (12).....	\$ 25
#3121 3 oz. cocktails (11).....	27
#3121 6 oz. tall sherbets (12).....	20
#3121 6 oz. low sherbets (7).....	15
#3500 4½ oz. oyster cocktails (2)..	30
#3500 3 oz. cocktails (3).....	27
(other stems, write or call)	
#3500/16 11" bowl.....	75
#3400/67 12" celery & relish.....	60
#3400/4 7", tall comport.....	85
#1238 12" ring stem vase.....	80
#3900/17 cup/saucer (3 sets).....	30
#151 3 oz. mustard and cover.....	85
#19 bobèche w/prisms.....	45

FLOWER FIGURES

#513 peachblo 13" Draped Lady.....	\$175
#513 amber 13" Draped Lady.....	200
#1111 crystal 12" Heron.....	95
#1114 peachblo 6½" B. Charlotte...	75
#1114 lt. em. 6½" B. Charlotte....	75
#509 lt. emerald Two-Kid.....	140
#509 crystal Two-Kid.....	85

SWANS

3" peachblo, style #1.....	\$ 30
3" ebony, style #1, signed.....	50
3" amber, style #2, signed.....	75
3" crystal, style #2, signed.....	16
3" amberina, style #2, signed.....	100
8½" milk glass, style #3.....	175
Ebony candle inserts for 4½".....	15

BRIDGE HOUNDS #1371

Crown tuscan.....	\$ 22
Mocha, original label.....	25
Smoke, original label, rare.....	55

CAMBRIDGE ARMS

#1536 peg nappies (ea).....	\$ 8
#1633 peg vases (ea).....	12
#628 candle bases (ea).....	10
#1596 tall candle base (ea).....	35
#19 bobèche w/prisms (ea).....	20
(other parts, candelabras, write)	

SMALL ITEMS

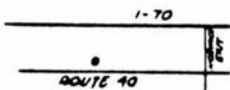
#2 Rooster muddlers (ea).....	\$ 14
#1 amber muddler.....	12
#1 emerald muddler.....	15
#3400 demi cup & saucer: amber, lt.	
emerald, gold krystal (set)....	30
#702 crown tuscan mini-cornucopia.	15
Peachblo perfume, no dobber.....	25
#1402/13 emer. Tally-Ho cordial...	38
#1066 all gold cordial, rare.....	38
Regency, amethyst cordial.....	35
Regency, moonlight blue cordial...	40
(more cordials, write)	

All Mint. Prices Each. UPS Extra.
Excess Refunded. Return Privilege.

HAPPY THANKSGIVING!

WELCOME TO GLASS COUNTRY!

STOP AND SEE US



WE FEATURE GLASSWARE OF:
CAMBRIDGE, HEISEY, FENTON & FOSTORIA

Plus a full line of Art Pottery and a General line of Quality Antiques

Stage Coach Antique Mall

RT. 40, ONE-HALF MILE WEST OF I-70 NORWICH EXIT #184
MANY DEALERS-WIDE SELECTION-PLENTY PARKING

DORIS AND ROY ISAACS
BUY AND SELL
614-872-3720



7525 EAST PIKE
NORWICH, OHIO 43787

MON THRU SAT 10-5:30 SUN 12-5:30
SUMMER EVENING HOURS BY CHANCE
MANY DEALERS - PLENTY OF PARKING

SPRINGFIELD Antique Show & Flea Market

Clark County Fairgrounds

SPRINGFIELD, OH

Exit 59 on I-70

400-800 DEALERS

INSIDE AND OUTSIDE

Ohio's largest year round show with an
emphasis on quality antiques

9:00 AM - 5:00 PM

Admission \$1.00

Children under 12 FREE

NEXT SHOW

NOVEMBER 19 & 20, 1988

1988 SHOW DATES

DEC. 10-11

1989 SHOW DATES

JAN. 21-22 Inside

BRUCE KNIGHT, MGR.

For Information Write:
P.O. Box 2429, Springfield, OH 45501
Phone (513) 325-0053

COLUMBUS ANTIQUE FLEA MARKET (ANTIQUES & COLLECTIBLES)

Ohio State Fairgrounds - Lausche Building
Off I-71 Exit 17th Avenue - Columbus, Ohio

NOVEMBER 13 TH

Sunday Only - 7 A.M. to 4 P.M.
Show Admission \$1.50 - Under 12 Free
150 QUALITY DEALERS

SELLING Advertising Art Deco, books, Cambridge, clocks, coins, collec-
tibles, Depression glass, dolls, Fiesta, fine early furniture, Heisey, jewelry,
lamps, oak furniture, post cards, pottery, good primitives, tools and print
shop items.



4214 North High Street, Columbus, Ohio 43214
(614) 267-8163 (614) 263-6830 (614) 885-2352

NEXT SHOW: December 11, 1988

THE GLASS URN

456 West Main Street, Suite G.
Mesa, AZ 85201 602 / 833-2702
Mail Order Shows Open Shop
CAMBRIDGE, FOSTORIA, HEISEY, ETC.

DEALERS**DIRECTORY**

NOTE: When writing to the Dealers listed here, please enclose a SASE!

MILBRA'S CRYSTAL MATCHING

P.O. Box 363, Rio Vista, TX 76093
Milbra Long 817 / 645-6066
FOSTORIA * CAMBRIDGE * HEISEY * DEPRESSION
ERA GLASSWARE
BUY and SELL

BENICIA ANTIQUE SHOP

305 First Street
Benicia, California 94510

OPEN 11 AM - 5 PM
Closed Monday

Z. E. LOPES 707-745-0978

VISIT HISTORIC BENICIA
and its 28 shops

Off Interstate #80
..... North of San Francisco

THE MUTED SWAN ANTIQUES

5486 Peachtree Rd. Chamblee, GA 30341
Heart of Chamblee Antique Row
Specializing in Cambridge, Heisey and Fostoria
Bill & Pat Miller 404-451-7620

Elegant American Glassware of the Early 1900s

ABBA Antiques

Bill & Barbara Adt (404) 279-1942
P.O. Box 2485 Lilburn, Georgia 30226

Mama Manning's Cherished Relics

3118 Terry Rd., Jackson, MS 39212

JENELL P. MANNING VELMA PICKLE
Bus. (601)372-1713 (601)353-5316
Res. (601)372-0456

BOGART'S ANTIQUES

Stagecoach Mall, Building #2
Norwich, OH 43767

Jack and Sharon Bogart

614/826-7439 and 614/872-3514

BUY - SELL - APPRAISE - REFINISH
SEAT WEAVING - CLOCK REPAIR
COPPER & BRASS POLISHING

GENERAL LINE CAMBRIDGE GLASS

ANTIQUES ON THE MALL

SPECIALIZING IN CAMBRIDGE GLASS

Stagecoach Mall - Bldg. 3 - Norwich, OH

Virginia Bennett 614/432-4483

64183 Warne Drive, Cambridge, OH 43725

D & D ANTIQUES

Columbus, Ohio

DICK SLIFKO

SHOWS ONLY

BERKELEY ANTIQUES

69 Berkeley St., Boston, MA 02116

OPEN: Monday thru Saturday 11 AM to 5 PM

GEORGE & FRANK 617/426-1048

DUNCAN, CAMBRIDGE, HEISEY, GENERAL LINE

*YOU CAN ADVERTISE YOUR
ANTIQUe SHOP HERE!*

THE GLASS CUPBOARD

39 Shire Oaks Drive
Pittsford, New York 14534

Marcia Ellis Cambridge, Duncan Miller
(716) 586-7596 Shows, Mail Order, Appt.

JUDY'S ANTIQUES

Judy Bennett

422 S. Ninth Street (Corner of Jefferson)

Cambridge, Ohio 43725

BUYING Ph. 614-432-5855 SELLING

Cambridge Glass my Specialty

"Happiness Is" - The Stultzs

3106 Warren Court, Glen Allen, VA 23060

Shows and Mail (Richmond Area) 804/262-1273

GLASS CIRCA 1890-1960

"Days of Future Passed"

4 Newbrook Lane, Bayshore, L.I., NY 11706

LYNN DEZMAIN (516) 665-3890

Cambridge, Elegant Glass, D. G., Collectibles

GREEN ACRES FARM

2678 Hazelton Etna Rd., Pataskala, OH 43062
(State Route 310 North)

Sat. & Sun. 1-7 PM 614/927-1882

Antiques, Crystal Glass and Collectibles

**MOSTLY HEISEY
& CAMBRIDGE**

16 Clayton Place, Albany, NY 12209

Rhoda Curley 518 / 482-6272

SHOP and MAIL ORDER

THE HITCHING POST

7467 S. R. 88
Ravenna, OH 44266

Ph. 216-296-3686 D. McDaniel

CAMBRIDGE — HEISEY — GENERAL LINE

BUY-SELL 513/390-3617

Taste of Honey

Glassware—Collectibles

CLARKE & CAROLE WEST 3433 Turner Dr.

Springfield, OH 45504

CRYSTAL LADY

1819 Vinton St., Omaha, NE 68108

Joann D. Hagerty

Bus. (402)341-0643 Res. (402)391-6730

Specializing in Elegant Glass & Collectibles

L & M ANTIQUES

1331 S.E. 4th Ave., Pompano Beach, FL 33060

Lydia & Cliff McNeil 305/943-2274

CAMBRIDGE & FOSTORIA OUR SPECIALTY

Buy & Sell Shows Only

REMEMBRANCES

7597 Daphne Dr., No. Syracuse, NY 13212

Shirley S. Ladouceur 315 / 458-5297

ANTIQUES and COLLECTIBLES

MAIL ORDER SHOWS APPOINTMENTS

MARGARET LANE ANTIQUES

2 E. Main St., New Concord, OH 43762

Lynn Welker 614/826-4418

CAMBRIDGE GLASS MATCHING SERVICE

Hours Mon.-Fri. 1-5 PM or by Appointment

GLASS RESTORATION

CRYSTAL AND GLASSWARE

Don & Lynne Mt. Clemens, Mich.
Wormland (313) 791-9191

AL STEELE

Westerville, Ohio

614-882-6483 or 614-882-7124

Mail Orders and Shows Only

HEISEY — CAMBRIDGE — PATTERN GLASS

BUD'S TRADING POST

GENERAL STORE — FLEA MARKET

501 Wheeling Ave. Cambridge, OH 43725

10-5 Mon. thru Sat. 614-432-4688

CAMBRIDGE - PATTERN - ART GLASS

This Bud's for Y'all



National Cambridge Collectors, Inc.

P O Box 416, Cambridge, Ohio 43725

A nonprofit organization dedicated to the preservation and study of Cambridge Glass



You Are Cordially Invited
To Become A Member Of The
NATIONAL CAMBRIDGE COLLECTORS, INC.

Benefits derived from membership include receipt of our club publication, The Cambridge CRYSTAL BALL; informative Quarterly Meetings; Antique Shows Auctions; and other special events

The CambridgeCRYSTAL BALL is published the first of each month. This newsletter contains educational and interesting articles, questions and answers, information on reproductions and reissues, notices of all club functions, classified advertisements, dealers directory, and many other features of interest to collectors of Cambridge Glass

Yearly dues are \$13.00 for Individual Members and \$3.00 for each Associate Member. All members have voting rights, but only one issue of the CRYSTAL BALL will be mailed per household

Name (please print) _____ \$13.00

Mailing Address _____

City _____ State _____ Zip _____

Associate Members (Must be at least 12 years of age and living in the same household.)

1 Name _____

2 Name _____

3 Name _____

Total number of Associate Members _____ @ \$3.00 each \$ _____

TOTAL AMOUNT ENCLOSED \$ _____

Please make check payable to: NATIONAL CAMBRIDGE COLLECTORS, INC.

Recommended by _____

A "GIFT of MEMBERSHIP in N.C.C." is a gift that is sure to be appreciated every month, all year long. Send us your list, and we'll send a card in your name to reach everyone in time for Christmas!

"One should take good care not to grow too wise for so great a pleasure of life as laughter."
ADDISON

NOVEMBER 1988



National Cambridge Collectors, Inc.

P. O. Box 416, Cambridge, Ohio 43725

FIRST CLASS MAIL

FIRST-CLASS MAIL
U.S. POSTAGE
PAID

So. Vienna, Ohio
45369
Permit No. 15

Membership Renewal Notice

This is your **last** issue of the *Crystal Ball*—if the date on your address label reads **11-88**.

Please renew now!