



# Cambridge Crystal Ball

Published monthly by the National Cambridge Collectors, Inc.  
to encourage and report the discovery of the elegant and boundless product  
of the Cambridge Glass Company of Cambridge, Ohio

Issue No. 214

February 1991

## From The President's Desk

Over dinner the other evening, three of us began to recall our childhood and the ways of our parents and grandparents. We are all about the same age and our roots lie in rural United States although different areas, northeastern, midwest and southeast. Looking back 35 to 40 years, and how we and/or our neighbors lived, it is hard to believe how much the standard of living in rural areas has changed, as has, in most instances, the beliefs and attitudes of the people. We were questioning why our parents and their generation held the beliefs they did and their resultant expressions of these beliefs.

My parents and those of my friends were born in the first years of this century, of parents born in the 19th century and whose grandparents participated in some manner, on one side or the other, in the Civil War. As children they experienced the "Roaring Twenties" and as young adults, the Depression of the 1930s. Then came WWII, the 1950s, and subsequent decades accompanied by the technology explosions that are still happening. Our roots are in the mid-20th century but those of our parents were firmly placed in the 19th; we did not experience the Great Depression, they did, and many were greatly influenced by it. Thus, the behavioral patterns we remember.

Stop and think of the changes our parents and grandparents have seen or saw during their life times as well as the technological advances that have improved our stand-

ard of living but changed the world, sometimes not always for the better. There are people alive today who have known people, relatives or friends, whose great-great grandparents could have heard Mozart and Beethoven perform as well as having met some of the founding fathers of our country. All too often, however, I am afraid our beliefs and attitudes have not kept pace with advancing technology and we cannot use in the best manner, the technologies available to us or in the worse case, misuse them to the detriment of ourselves and others. And while you can force change on people, it takes several generations to change the attitudes and beliefs of a large group. As in all things, patience is a virtue.

Speaking of patience, those of you who have been waiting for the 1991 Cambridge Auction, it is almost that time. I hope to see many of you there but if you cannot attend, do not hesitate to send in mail bids. In the past, a significant number of items did go to mail bidders. Once the auction of over, it is but a "short" time to Convention 1991. There is still adequate time to make plans to attend the 1991 All-Cambridge Glass Auction and plenty of time to arrange for the late June trip to Cambridge. Then comes the August picnic, November dinner and once again it will be time to say "Happy Holidays!" Mark your calendars now for these 1991 Cambridge events. Meantime, have a . . . .

**HAPPY VALENTINE'S DAY!**

# Cambridge Crystal Ball

Official publication of National Cambridge Collectors, Inc., a non-profit corporation with tax exempt status. Published once a month for the benefit of its members.

Membership is available for individual members at \$15 per year and additional members (12 years of age and residing in household) at \$3 each. All members have voting rights, but only one *Crystal Ball* will be mailed per household.

Back issues of the *Crystal Ball* are available (beginning with Issue No. 1, May 1973) for members only. Cost: \$1.00 each or 12 issues for \$10.00.

## 1990-91 Officers & Committee Chairpersons

President	Mark A. Nye
Vice-President	Cynthia A. Arent
Secretary	J. D. Hanes
Treasurer	William C. Smith
Sergeant-at-Arms	Judy Momirov
Acquisition	Joy McFadden
Budget & Finance	David B. Rankin
By-Laws	Marybelle Moorehead
Membership	Phyllis D. Smith
Museum—Facilities	Doyle Hanes
Museum—Interior	J. D. Hanes
Non-Glass Items	J. D. Hanes
Nominating	Willard P. Kolb
Program	Cynthia A. Arent
Project	R. Clarke West
Public Relations	Bill & Phyllis Smith
Publicity	Cynthia A. Arent
Study Group Advisor	Judy Momirov
1991 Auction	Lynn M. Welker
1991 Antique Show	Joy R. McFadden, Mary Beth Hackett
1991 Convention	Marybelle Moorehead
1991 Flea Market	Marlene Snyder
Crystal Ball Editor	Phyllis D. Smith

## Classified Advertising Rates

10 cents per word \$2.00 minimum  
We cannot mix type size in classified advertisements. Abbreviations and initials will count as words. Payment in full must accompany all ads.

## Display Advertising Rates

(Camera-ready ads preferred)	Members	Non-Members
1/8 page	\$ 6.00	\$10.00
1/4 page	10.00	15.00
1/2 page	18.00	25.00
3/4 page	25.00	35.00
Full page	33.00	45.00

## Dealers Directory

Five-line maximum \$18.00 for 12 months

Cambridge *Crystal Ball* assumes no responsibility for items advertised and will not be responsible for errors in price, description or other information.

Advertising copy, articles, club news and notices must be in our hands by the 10th of each month to assure publication in our next issue.

Paid advertisements containing reproductions or new glass will not knowingly be accepted for publication.

Opinions or information stated in any signed article or letter printed in the *Crystal Ball* are those of the authors and may or may not agree with National Cambridge Collectors, Inc. The Editor reserves the right to refuse and to edit any material submitted for publication so as to conform with the editorial style of the *Crystal Ball*.

## Please Address All Correspondence to:

National Cambridge Collectors, Inc.  
P.O. Box 416 Cambridge, Ohio 43725  
**President** — Mark A. Nye, 305/221-0343  
**Secretary** — J.D. Hanes, 614/432-6794  
**Editor** — Phyllis Smith, 513/323-3888

Please notify us immediately of any change in your address.

Please enclose an SASE when requesting information.

# CAMBRIDGE GLASS BOOKS FOR SALE

by National Cambridge Collectors, Inc.

\* **COLORS IN CAMBRIDGE GLASS**  
(128 pages - 60 color plates - fully indexed)  
Hardbound with Price Guide \$19.95

\* **1930-34 CAMBRIDGE GLASS CO. CATALOG REPRINT**  
(250 page reprint of original catalog)  
Paperback with Price Guide \$14.95

\* **1949-53 CAMBRIDGE GLASS CO. CATALOG REPRINT**  
(300 page reprint of original catalog)  
Paperback with Price Guide \$14.95

\* **1956-58 CAMBRIDGE GLASS CO. CATALOG REPRINT**  
(164 page reprint of original catalog)  
Paperback \$6.95

**1985 COMBINED PRICE GUIDE**  
for 1930-34 & 1949-53 catalog reprints Postpaid \$5.75

\*NCC MEMBERS ONLY: These publications are available at 10% discount.

by Bill & Phyllis Smith

**CAMBRIDGE GLASS 1927-1929**  
(66 page reprint of original catalog)  
Paperback with Identification Guide \$7.95

by Cambridge Buffs Study Group

**NEARCUT**  
(108 page reprint of 1910 Cambridge Catalog)  
Paperback with Price Guide \$9.95

by Mary, Lyle and Lynn Welker

**CAMBRIDGE GLASS CO.**  
(120 pages of reprint from 8 old catalogs)  
Paperback \$10.00

**CAMBRIDGE, OHIO GLASS IN COLOR II**  
Spiralbound \$5.95

by Harold and Judy Bennett

**1903 CAMBRIDGE GLASS CO. CATALOG REPRINT**  
(106 page reprint of an original catalog)  
Paperback \$7.50

Address your orders to:

**BOOKS**  
National Cambridge Collectors, Inc.  
P.O. Box 416  
Cambridge, OH 43725

Please add P & H per order  
(First book \$2 - Additional books 50¢ each)  
Ohio residents please add 6% state sales tax.

**DEALER DISCOUNTS AVAILABLE - PLEASE WRITE!**

# AUCTION OFFERS UNUSUAL VARIETY

by LYNN WELKER  
Auction Chairman

This year's auction has a wide variety of shapes and colors. Do not be afraid to mail bid, as mail bidders have been very successful in the past. All glass is carefully packed and sent to you the week following the auction. The item(s) that you bid on will be executed as if you were sitting at the auction, and you pay only the final selling price. Example: you bid \$200 on an item that brings \$100, you will be refunded \$100. Your check is not cashed until after the auction.

Among the unusual shapes this year are: #57 light emerald #1018 loaf sugar tray; #87 rolling pin, unusual in crystal; #146 enamel glassworkers pin; and #228 helio lamp, complete with original fittings and silk shade. A nice group of Georgian pieces (#23-#40) are highlighted by #39 smoke candy made from a 9 oz. tumbler mold; and #40, a very rare pistachio creamer made from a 5 oz. tumbler mold.

Several unusual colors grace this year's auction. The #70 rubina comport has the unusual scalloped rim and very fine color. Topaz, a hard color to find, is represented by a satin finished Wetherford bowl (#225). Turquoise, one of the oldest and most difficult of the Cambridge colors to find, appears in the form of a Queen salt and pepper (#226). The #227 lamp in blue II is a chance to own another hard color to find, in a very rare shape. An experimental color (powder blue opaque) is represented by #229, cup and saucer.

A variety of hard to find decorations and treatments are among this year's offerings: #15 topaz goblet with willow blue stem and foot; #44 & 224 crackle tumblers; #61 bowl with the seldom seen Firenze etching; and #110 Willow Scene etched bowl with a rare mauve enamel encrusting. The #202 & #203 crown tuscan pieces and #215 ebony vase are great opportunities to acquire mint gold encrusted pieces on color. The #141 light emerald Hunt Scene tray; #222 Polo Scene canape set; and #223 Dartmouth Indian cocktail are all wonderful examples of rare color encrusted etchings.

This year's Nearcut group (#71-#86) include

three children's items: #84 emerald Fernland toy creamer; #85 3-prong toy candlestick; and #86 a rare Countess miniature lamp with original burner and chimney. A nice group of Caprice (#238-#263) includes enough pieces in each color (moonlight, pistachio and la rose) to put together complete luncheon sets.

Some very nice figurals round out this year's auction. Included in this group are: the #41 & #42 jade Ram's Head bowl and candlesticks; #92 Dolphin 2-lite crystal satin candlesticks; #123 peachblo cat bottle; #147 amber bridge hound; #148 crystal satin bird; #168 rooster muddler; and the #190 & #191 topaz dog and cat bottles. A nice group of flower frogs (#181-#189); swans (#204-#211); and nudes (#108, #132, #179, #201, #218 & #231) complete the list of figurals.

Be sure to attend this year's auction. If you can't, try a mail bid and help support the Museum fund.



Don't forget to bring your "Show & Tell" glass and a friend to the:

N.C.C. Quarterly Meeting  
Friday, March 1st, - 8 pm.  
Shenandoah Inn, Old Washington, Ohio

An informative meeting and preview of the Auction glass will be presented.

Feb. 11, 1936.

A. J. BENNETT

Des. 98,490

GOBLET OR SIMILAR ARTICLE

Filed Dec. 7, 1935

FIG 1

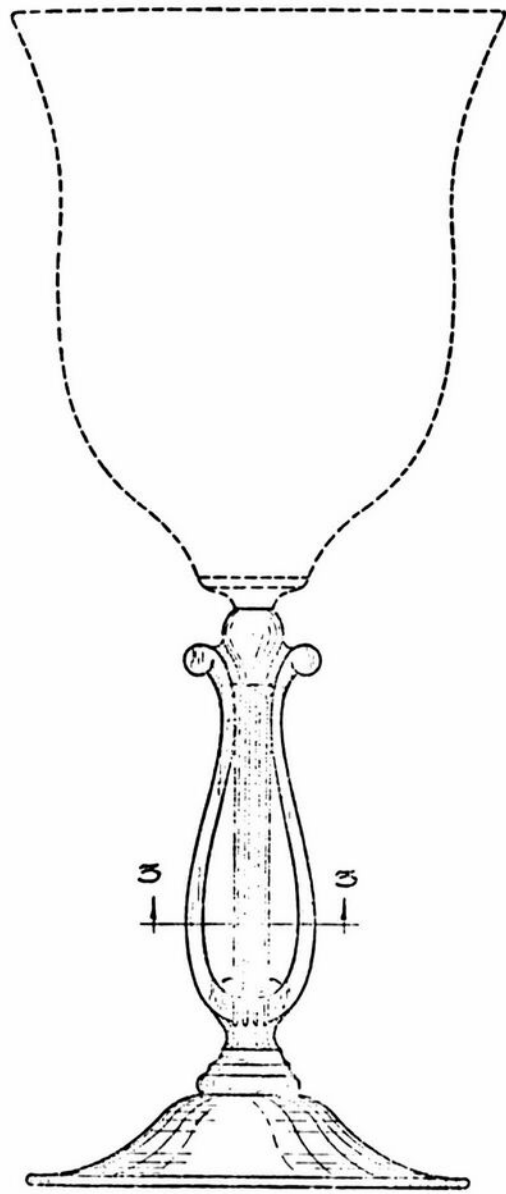


FIG 2

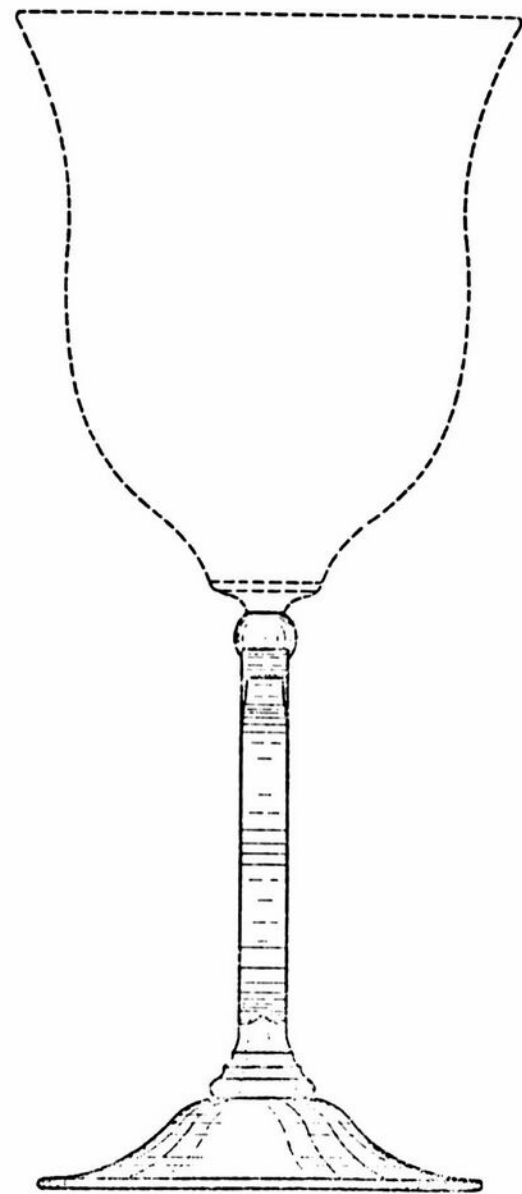


FIG 3



INVENTOR:

*Arthur J. Bennett*  
BY *Walter C. Williams*  
ATTORNEY



by MARK A. NYE

Fifty years ago this month, the February 1941 issue of "Crockery and Glass Journal" carried the Cambridge advertisement for Regency stemware, shown above.

The same illustration also appeared in the January 1941 issue as a photograph, (this may have been a news item rather than a paid advertisement) with the following caption.

"Selection of pieces from the new Regency line at Cambridge Glass Co. includes graceful goblet, saucer champagne, footed ice tea and compott. The lyre-like lines of the stem add to the charm."

Anyone not knowing the history of Cambridge and its stemware lines could easily assume from the preceding that Regency was a new stemware line. They would, of course, have made a wrong assumption since Regency stemware is nothing more than Stradivari stemware with a new name.

On December 7, 1935 a design patent application, serial number 59,950, for a goblet or similar article, with Arthur J. Bennett listed as the inventor was filed with the United States Patent Office. Slightly over two months later, on February 11, 1936, 55 years

ago this month, Design Patent No. 98,490 was issued to Mr. Bennett. The term of the patent was seven years. The bowl shape as sketched for the patent application is not the shape that was eventually used for the line. In addition, the stem itself was slightly altered prior to its production. (see page 4)

The oldest trade journal reference to the Stradivari line is dated February 1937, and the following month, appearing in "China, Glass and Lamps," was a photograph of the goblet, tall sherbet and a plate with the following caption.

"The Stradivari stem shape showing the Celestial engraving from the Cambridge Glass Co. is illustrated below. This is brand new. A fine range of new engravings are now being shown on this shape."

Whether or not the line was in production during 1936 has yet to be determined.

The line consists of those items found in most Cambridge stemware lines dating to the 1930s and 1940s, namely: goblet, tall sherbet (saucer champagne), low sherbet, claret, cocktail,

continued on next page

REGENCY.....continued from page 5

wine, oyster cocktail, cordial and three footed tumblers, 12, 10 and 5 oz. Also in the line were two comports, low and tall, both having a 5½" diameter.

The etchings Diane and Portia were available on Stradivari blanks by early 1938, and continued to be in the Cambridge line until some time after 1940, as these combinations were available from the 1940 catalog. The cuttings Celestial, Melody, Symphony and #940 were first used in conjunction with the Stradivari line during 1937-38. None of these cuttings, nor the Stradivari line, appear in the 1940 Cambridge Rock Crystal catalog; indicating these combinations were dropped prior to that year.

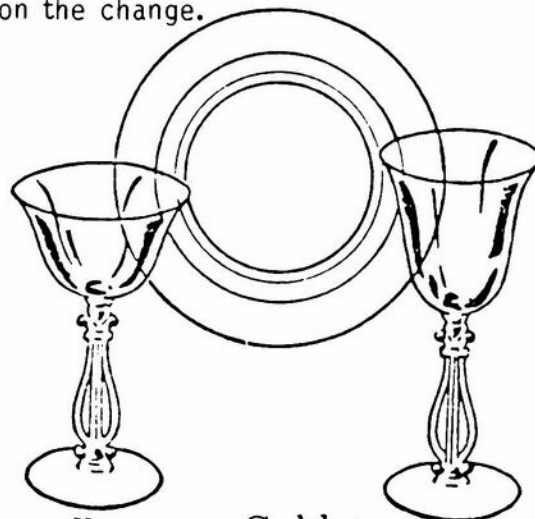
All decoration of the line was ceased during the 1940s. When the original June 1949 Cambridge catalog was issued, only the goblet was illustrated, but the complete line was available (plain only) and priced at \$15 per dozen pieces. The line continued to be available during the reopen years and for a short time, through a special matching service, was available with the Melody and Celestial cuttings.

The cocktail and cordial were produced in what Cambridge called Harlequin sets during the early 1940s. These sets were composed of one each of the item in eight different colors. These colors were: tahoe blue; moonlight; forest green; gold; rosa; mocha; pistachio and amethyst. Due to wartime shortages, these sets were discontinued in October 1943.

As mentioned earlier, the original name for this line was Stradivari and its line number

was #3575, though it was seldom used, even by Cambridge. The name Stradivari was used in the 1940 Cambridge catalog and price lists, but a supplemental page (probably issued in 1941) uses the name Regency. Copies of the 1940 catalog, with the name Regency pasted over the Stradivari name, are in existence. The date for the name change is also confirmed by the trade journal advertisements that were cited at the beginning of this article.

Why the change in names from Stradivari to Regency? We may never know the complete story, but one theory is salesmen were having trouble spelling Stradivari. By 1941 we were at war with Italy and perhaps this had some bearing on the change.



Regency Goblet

Regency Tall Sherbet

Regency 555—Salad Plate

Other than the cordials and cocktails made for Harlequin sets, Stradivari/Regency was not produced in color and has a non-optic bowl.

# UNITED STATES PATENT OFFICE

98,490

## DESIGN FOR A GOBLET OR SIMILAR ARTICLE

Arthur J. Bennett, Cambridge, Ohio

Application December 7, 1935, Serial No. 59,950

Term of patent 7 years

To all whom it may concern:

Be it known that I, Arthur J. Bennett, a citizen of the United States of America and resident of Cambridge, county of Guernsey, and State of Ohio, have invented a new, original, and ornamental Design for a Goblet or Similar Article, of which the following is a specification, reference being had to the accompanying drawing, forming part thereof, in which—

Figure 1 is a front elevational view of a goblet, showing my new design;

Figure 2 is a side elevational view of the same; and

Figure 3 is a sectional view on line 3—3, Fig. 1. I claim—

The ornamental design for a goblet or similar article, substantially as shown.

ARTHUR J. BENNETT.



# The Cambridge Glass Company



## REGENCY

Patent No. 93,490



10 oz. Goblet



7 oz. Tail Sherbet



7 oz. Low Sherbet



3 1/2 oz. Cocktail



3 oz. Wine



4 1/2 oz. Oyster Cocktail



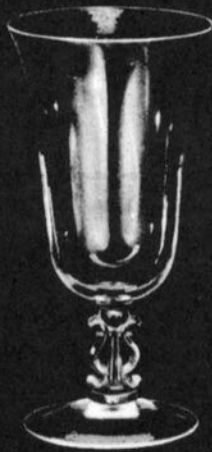
5 1/2 in. Low Comport



5 1/2 in. Tall Comport



12 oz. Ftd. Tumbler



10 oz. Ftd. Tumbler



5 oz. Ftd. Tumbler



Fingerbowl & Plate

Cambridge, Ohio - - - U. S. A.

# we get letters

Dear Editor,

We are donating \$50.00 for the purchase of glassware to the NCC to the memory of our close neighbor, Mr. Arnold Lynd. He was knowledgeable in all types of glassware, and a great collector friend. We have spent many an hour talking and looking into this subject. The NCC has lost a valuable member, and one of its earliest devoted collectors. We send our condolences to his family.

Sincerely yours,  
M/M Wilmer Bryan  
Pataskala, Ohio

## AN EXPRESSION OF SYMPATHY

LEONARD L. MATHYS  
Signal Hill, California

Word has been received that fellow N.C.C. member Leonard Mathys passed away on November 11, 1990. We send our heartfelt sympathy to his family, friends and his special friend and fellow N.C.C. member Terry Smith.

### ACTION BEGINS January 16, 1991



As we prepare this issue of the CRYSTAL BALL for the printer, we, like you, have been watching the activities in the Mid-East.

To our members who have family members and friends involved in this war we offer our prayers for their safety. We owe them a great debt. One way to show this is to fly the American Flag proudly every day!  
T H A N K S !



# Study Club News

## STUDY GROUP #13 - SOUTH WEST OHIO "MIAMI VALLEY, OHIO"

The Miami Valley Study Group met for their November 13th meeting at the Huber Heights, Ohio, Library. There were 13 members and two guests present.

Election of officers was held with the following results: Jim Kennon, president; Norma Hufford, vice-president; Clarke West, treasurer; and Sue Rankin secretary.

Our program was "Cambridge Baskets." We had 27 different baskets (either in color or pattern) on display. There were 13 Nearcut baskets.

"Show & Tell" consisted of the following items: #3400 bowl, gold krystal etched Portia; #3400 royal blue vase; 3 very small Yardley jars, pink frosted, Yardley tan and ivory; #3900 3½", 4 oz. tumbler etched Rosepoint; #2622 kitchen fount; crystal Caprice creamer w/silver edge; Shell flower center in crown tuscan w/Charleton decoration; willow blue round cup with optic; plain ivory 3-section candy w/lid; Archfoot Daisy crushed fruit bowl and covered butter w/gold decoration; milk glass Mt. Vernon decanter; Buzz Saw jelly compote; #3700 crystal cordial; #7966 crystal cordial; #3791 crystal cordial; Caprice ftd. ice tea in pistachio; and a #3126 pulled stem w/optic bowl.

Our next meeting will be December 11th. It is our Christmas dinner and will be held jointly with the local Heisey and Fostoria clubs. No formal meeting will be held.

submitted by Vicki Wollenhaupt

### 1906 CATALOG

The following eight pages are being reprinted here from the 1906 Cambridge Glass Co. catalog, for your information.

*"A man is relieved and gay when he has put his heart into his work and done his best."*  
EMERSON



CATALOGUE  
*of*  
Table Glassware, Lamps  

---

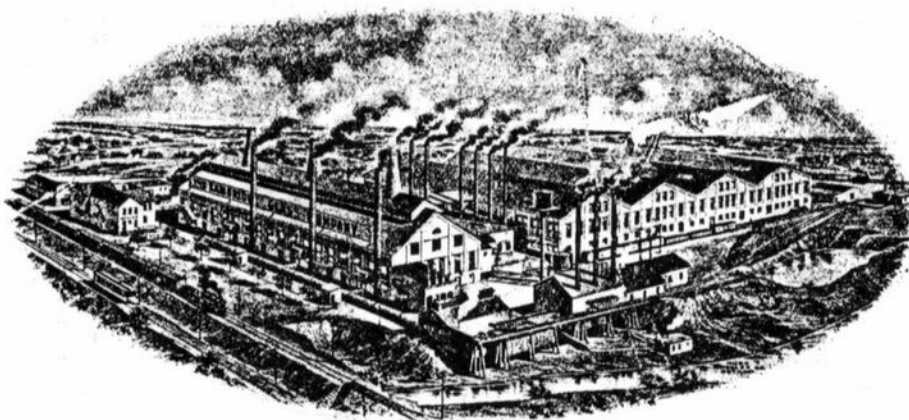
---

Barware and Novelties  

---

---

1906



1906

MANUFACTURED BY

THE CAMBRIDGE GLASS COMPANY

✧ Factory and General Offices are Located at ✧  
CAMBRIDGE, OHIO

Sample Rooms in All the Large Cities

Private Mold Work a Specialty

---

---

Our Catalogues of Druggists' Ware and Vault Lights will be furnished on application

# INDEX.

	Page No.
Ale Tumblers.....	110-111
Ales, Derby, (Stemware).....	145-146
Ales, Plain, (Stemware).....	143-144
Aquaria.....	183
Awning Rings.....	67
Bar Bottles.....	62
Bar Tumblers.....	107-109
Beer Mugs, Plain.....	126-128
Beer Mugs, St. Louis.....	123-125
Bitter Bottles.....	62
Butter Moulds.....	66
Basket.....	67
Boston Cooking Cup.....	92-99
Candy Trays.....	55-57
Candy Plates.....	55-57
Candy Jars.....	57-59
Candle Sticks.....	67-70
Casters.....	73-77
Cake and Cheese Covers.....	53
Confectioners Supplies.....	54-61
Common Tumblers.....	86-93
Crushed Fruits.....	54-55
Custards.....	60-61
Cordials.....	173-175
Cut Salts and Peppers.....	76
Cooking Cup.....	99
Cocktails.....	160
Clarets.....	171
Decanter.....	62-63
Dippers.....	66
Display Jars.....	184
Egg Glasses.....	163
Electric Shades.....	187-191
Finger Bowl.....	62
Fish Globe.....	163
Fixing Boxes.....	185
Footed Sherbets.....	60-61
Funnels.....	185
Furniture Balls.....	67
Graduates.....	185
Goblets.....	151-181
Gas Shades.....	187-191
Hatchet.....	67
Hat.....	67
Hot Whiskies.....	170
High Balls.....	173
Individual Salts.....	77
Jars, Candy.....	57-59
Jars, Display.....	184
Jugs, Blown.....	81-83
Jugs, Pressed.....	80-81
Jelly Tumblers.....	84-85
Lamps.....	192-199
Measuring Glasses.....	185
Measuring Cup.....	99
Measuring Jugs.....	65
Molasses Cans.....	78-79
Mugs, Handled.....	65
Mugs, Toy.....	65
Mugs, Beer.....	123-128

	Page No.
Nappies.....	48-52
Packers Goods.....	65-67
Packers Butters.....	52
Paper Weights.....	186
Photo Trays.....	185
Photographic Supplies.....	185
Pitchers, Pressed.....	80-81
Pitchers, Blown.....	81-83
Plates.....	67
Piano Insulators.....	66
Rhine Wines.....	171
Salts and Peppers, Cut.....	76
Salts and Peppers, Shakers.....	73-77
Sherbets, Footed.....	60-61
Soda Tumblers.....	112-121
Stemware Lines.....	147-180
Stemware.....	129-182
Slipper.....	67
Sherries.....	172
Stemware, Banded.....	177-178
Shades.....	187-191
Tableware Lines	
No. 2635 Line.....	3-8
No. 2626 Line.....	9-16
No. 2700 Line.....	17-20
No. 2579 Line.....	21-24
No. 2508 Line.....	25-29
No. 2590 Line.....	30-31
No. 2304 Line.....	32-34
No. 2577 Line.....	35-46
No. 2625 Line.....	47
No. 2634 Line.....	48-49
No. 2628 Line.....	49
No. 2629 Line.....	50
No. 2588 Line.....	51-52
No. 2627 Line.....	52
No. 2511 Line.....	52
No. 2537 Line.....	53-54
Table Salts.....	77
Toy Mugs.....	65
Tomahawks.....	67
Tumblers, Ale.....	110-111
Tumblers, Bar.....	107-109
Tumblers, Banded.....	101-103
Tumblers, Sand Blast Engraved.....	103-105
Tumblers, Common.....	86-93
Tumblers, Handled.....	99
Tumblers, Jelly.....	84-85
Tumblers, Soda.....	112-121
Tumblers, Table and Hotel.....	94-100
Tumblers, Toy.....	65
Twine Holders.....	65
Trays.....	64
Vases.....	66-72
Water Bottles.....	82
Wine Sets.....	63
Water Trays.....	64
Water Sets, Sand Blast Engraved.....	106
Weiss Beers.....	121-122
Weiss Beers, Cup Foot.....	120-142
Wines.....	173-175

# Fernland.

No. 2635.

SCALE. HALF SIZE.



Sugar and Cover.  
Packed 7 dozen in a barrel.



Cream.  
Packed 9 dozen in a barrel.

Set packs 1 1/4 dozen in a barrel.



Spoon.  
Packed 11 dozen in a barrel.



Butter and Cover.  
Packed 5 dozen in a barrel.



Quart Jug.  
Packed 3 1/4 dozen in a barrel.



Tumbler.  
Packed 17 dozen in a barrel.



3 Pint Jug  
Packed 2 dozen in a barrel.

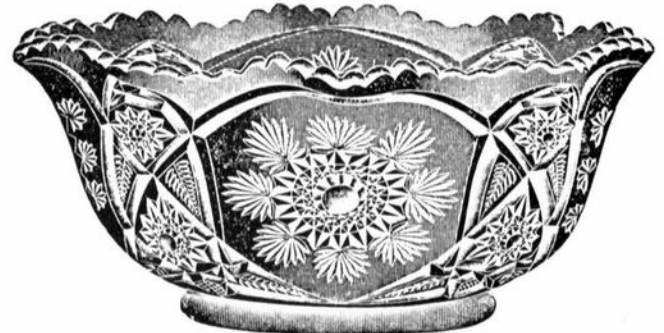
# Fernland.

No. 2635.

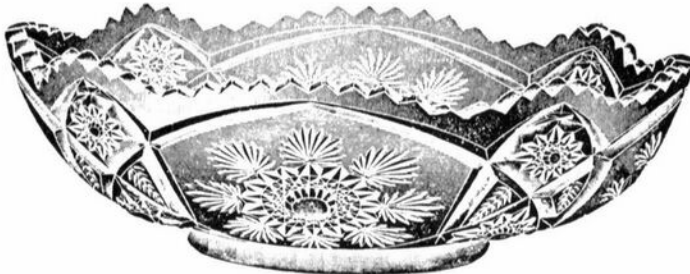
SCALE, HALF SIZE



Nappy, A Shape or Round.  
8¼ inch, actual measurement.  
Packed 5 dozen in a barrel.



Nappy, B Shape or Crimped.  
8¼ inch, actual measurement.  
Packed 4 dozen in a barrel.



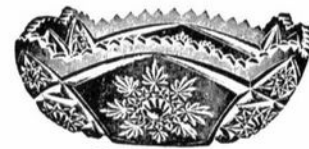
Nappy, D Shape or Flared.  
9¼ inch, actual measurement.  
Packed 5 dozen in a barrel.



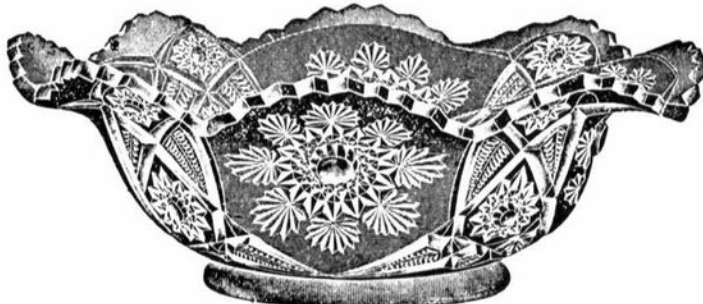
Nappy, C Shape or Belled.  
8½ inch, actual measurement.  
Packed 5 dozen in a barrel.



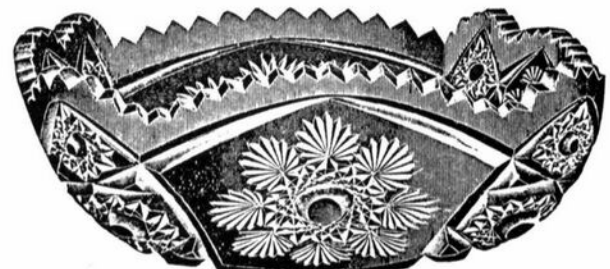
Nappy, Round.  
4¼ inch, actual measurement.  
Packed 24 dozen in a barrel.



Nappy, Square.  
4¼ inch, actual measurement.  
Packed 22 dozen in a barrel.



Nappy, E Shape or Flared and Crimped.  
9½ inch, actual measurement.  
Packed 4½ dozen in a barrel.



Nappy, Square.  
8 inch, actual measurement.  
Packed 4 dozen in a barrel.

# Fernland.

No. 2635.

SCALE. HALF SIZE



11 inch Berry Plate.  
Packed 5½ dozen in a barrel.



Tall Celery.  
Packed 5 dozen in a barrel.



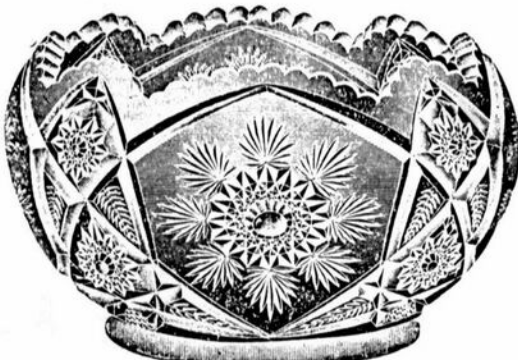
Oil, D. S.  
Packed 12 dozen in a barrel.



8 inch Pickle Tray.  
Packed 14 dozen in a barrel.



10 inch Celery Tray.  
Packed 9 dozen in a barrel.



6 inch Rose Bowl.  
Packed 4 dozen in a barrel.



4 inch Rose Bowl.  
Packed 8 dozen in a barrel.

# Fernland.

No. 2635.

SCALE, HALF SIZE.



Salt and Pepper.  
Packed 30 dozen in a barrel.  
Packed 12 dozen in a box.



Condiment Set.  
Packed 2 dozen in a barrel.



Toothpick.  
Packed 24 dozen in a Barrel.  
Packed 12 dozen in a box.



6 inch Comport, L Shape.  
Packed 4 dozen in a barrel.  
Actual measurement 7½ inches.



6 inch Comport, C Shape.  
Packed 4½ dozen in a barrel.  
Actual measurement 7¾ inches.



6 inch Comport, A Shape.  
Packed 4½ dozen in a barrel.



6 inch Vase.  
Packed 10 dozen in a barrel.



6 inch Footed Comport, D Shape.  
Packed 4 dozen in a barrel.  
Actual Measurement, 7¾ inches.



8 inch Vase.  
Packed 4½ dozen in a barrel.

# Fernland.

No. 2635.

SCALE HALF SIZE.



6 inch Comport, J Shape.  
Packed 4 dozen in a barrel.



6 inch Comport, K Shape.  
Packed 4 dozen in a barrel.



6 inch Comport, M Shape  
Packed 4 1/2 dozen in a barrel.



6 inch Comport, G Shape.  
Packed 4 dozen in a barrel.



6 inch Comport, C Shape.  
Packed 4 1/2 dozen in a barrel.



6 inch Comport, E Shape.  
Packed 4 1/2 dozen in a barrel.



6 inch Comport, H Shape.  
Packed 4 1/2 dozen in a barrel.



6 inch Comport, F Shape.  
Packed 4 dozen in a barrel.

# Fernland.

No. 2635.

CUTS HALF SIZE.



4 3/8 inch Comport, K Shape.  
Packed 9 dozen in a barrel.



4 3/4 inch Comport, G Shape.  
Packed 9 dozen in a barrel.



4 3/4 inch Comport, L Shape.  
Packed 8 dozen in a barrel.



4 3/8 inch Comport, H Shape.  
Packed 10 dozen in a barrel.



4 3/8 inch Comport, M Shape.  
Packed 9 dozen in a barrel.



4 3/8 inch Comport, D Shape.  
Packed 10 dozen in a barrel.



4 3/8 inch Comport, C Shape.  
Packed 10 dozen in a barrel.



4 3/8 inch Comport, J Shape.  
Packed 8 dozen in a barrel.



# L. A. MANESS

RT. 1, BOX 552, ASHLAND, VA 23005  
(804) 798-1825

C = MARKED UPS \$3.50 CTN

- #1070 36 oz. Pinched decanter w/4  
2 oz. Tumblers, amber, set....\$75.00
- #3400/119 12 oz. Cordial decanter  
& #1341 1 oz. cordials (6),  
amethyst, set.....\$70.00
- #1349 12" ftd. bowl, forest  
green C.....\$52.50
- #2 4" Star candlesticks (2) ea...\$16.00
- Star indiv. candlesticks (5) ea..\$ 7.50
- #663 3-lite epergen.....\$95.00

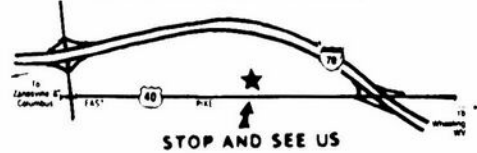
## MT. VERNON - CRYSTAL

- Pitcher, 1½ pint C.....\$60.00
- 10 oz. ftd. tumbler (8) each....\$18.00
- 3 oz. wine (8) each.....\$15.00

VISA/MASTERCARD WELCOME

# Stage Coach Antique Mall

WELCOME TO GLASS COUNTRY!



STOP AND SEE US

RT. 40 ONE-HALF MILE WEST OF I-70 EXIT #164  
MANY DEALERS - WIDE SELECTION - PLENTY PARKING

WE FEATURE GLASSWARE OF:  
CAMBRIDGE, HEISEY, FENTON, & FOSTORIA  
Plus Art Pottery & a General line of Antiques

**DORIS AND ROY ISAACS**

**BUY AND SELL**  
614-872-3720



7525 EAST PIKE  
NORWICH, OHIO 43767

MON THRU SAT 10-5:30 SUN 12-5:30  
SUMMER EVENING HOURS BY CHANCE

# SPRINGFIELD

## Antique Show & Flea Market

Clark County Fairgrounds

# SPRINGFIELD, OH

Exit 59 on I-70

400-800 DEALERS

INSIDE AND OUTSIDE

Ohio's largest year round show with an  
emphasis on quality antiques

9:00 AM - 5:00 PM

Admission \$1.00

Children under 12 FREE

NEXT SHOW

**FEBRUARY 16 & 17, 1991**

### 1991 SHOW DATES

MARCH	16-17	Inside
APRIL	20-21	Inside & Outside
MAY	17-18-19	Extravaganza
JUNE	15-16	Inside & Outside
AUGUST	17-18	Inside & Outside

**R. Bruce Knight, MGR.**

For Information Write  
P O Box 2429, Springfield, OH 45501  
Phone (513) 325-0053

## The **DAZE** Inc.

\*SPECIAL OFFER  
to NCC friends \$2. off  
the 1 year subscription  
price when on this form  
or copy of.

The Original National monthly newspaper dedi-  
cated to the buying, selling & collecting of colored  
glassware and china including Depression Glass  
and the Elegant Glass (Cambridge, Heisey, Fostoria,  
etc.) We educate and inform you each month  
with feature articles by top notch columnists,  
readers "finds", club happenings, show news and a  
multitude of ads. Find those missing pieces to your  
30s, 40s or 50s pattern. Can't identify it? Perhaps  
we can help "Keep up with what's happening with  
a subscription to the DAZE. Buy, sell or trade from  
the convenience of your easy chair.

Name \_\_\_\_\_ Street \_\_\_\_\_

City \_\_\_\_\_ State \_\_\_\_\_ Zip \_\_\_\_\_

1 yr \$19    2 yrs \$37    \$2. Single Current Copy

Exp date \_\_\_\_\_ Card No. \_\_\_\_\_

Signature \_\_\_\_\_

**Orders to D.G.D., Box 57NC, Otisville, MI 48463**

Please allow 30 days for your first issue - Canadian subscribers, add \$1.  
per year and subscribe by charge card only! This Special Offer may not be  
combined with any other special offer.

# COLUMBUS ANTIQUE FLEA MARKET

(ANTIQUES AND COLLECTIBLES)

## FEBRUARY 24th

Ohio State Fairgrounds—Lausche Building—Off I-71 Exit 17th Ave.

SUNDAY ONLY—7:00 AM TO 4:00 PM

### 1991 SCHEDULE 1991

APRIL 7th • MAY 5th

SEPT. 8th • OCT. 6th • NOV. 10th • DEC. 8th

150 Quality Dealers

Show admission \$1.50 • Children under 12 free

Heated/Air Conditioned • Concession

**10TH  
YEAR**

**10TH  
YEAR**



*"The Friendly  
Family Business"*

4214 North High Street, Columbus, Ohio 43214  
(614) 267-8163 (614) 263-6830 (614) 885-2352

## — Classified —

**WANTED:** Carmen, "Cut Wild Rose," punch bowl. Need bowl only! G. G. George, 1102 W. Palm Lane, Phoenix, AZ 85007. 602/252-3151.

**WANTED TO BUY:** Any Cambridge Elaine etch pieces. #3400 stem. E. Smith, P.O. Box 432, Newark, IL 60541. 708/554-9655.

**FOR SALE:** Cambridge Glass from my collection. SASE for list. Yvonne Gordon, 61270 Patch Road, New Concord, OH 43762. Phone: 614/826-7140.

## MAKE A DATE FOR

N.C.C. CONVENTION  
and Antique Show & Sale

JUNE 27 - 30, 1991  
Shenandoah Inn, Old Washington, Ohio



**12th Annual**  
Sparkling Clearwater  
Depression Glass  
Club, Inc.

**Show & Sale**  
Glass • China • Pottery

*"Shades of Elegance"*

February 9 & 10, 1991

Saturday, 10 A.M. - 5 P.M.

Sunday, 11 A.M. - 5 P.M.

6340 126th Avenue North

Minnreg Building

(South of Honeywell)

Pinellas Park, Florida

**ADMISSION**

\$ 2.34

TAX .16

2.50

good both days

**GUESTS**

Teri Steele

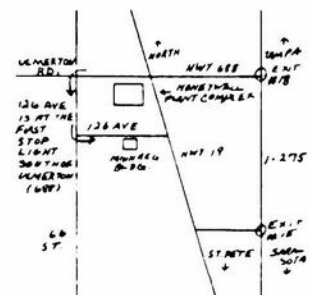
Publisher/Editor

"The Daze"

Bill Smith

Cambridge

Authority



**SHOW INFORMATION**

1-813-530-4871

**SNACK BAR — DOOR PRIZES**

# DEALERS



# DIRECTORY

NOTE: When writing to the Dealers listed here, please enclose a SASE!

<p><b>SANDY'S ANTIQUE MALL</b> 617 Wheeling Ave. Cambridge, OH 43725 Phone 614/432-2570</p> <p><b>COLLECTOR'S ITEMS</b> Summer 9 - 6 Daily *Winter 9 - 4:30 Mon - Sat</p>	<p><b>BENICIA ANTIQUE SHOP</b> 305 First Street Benicia, California 94510</p> <p><b>OPEN 11 AM - 5 PM</b> Closed Monday</p> <p>Z. E. LOPES 707-745-0978</p>	<p><b>THE MUTED SWAN ANTIQUES</b> 5486 Peachtree Rd. Chamblee, GA 30341 Heart of Chamblee Antique Row</p> <p>Specializing in Cambridge, Heisey and Fostoria Bill &amp; Pat Miller 404-451-7620</p>
<p><i>YOU CAN ADVERTISE YOUR ANTIQUE SHOP HERE!</i></p>	<p><b>VISIT HISTORIC BENICIA</b> and its 28 shops</p> <p>Off Interstate #80 ..... ..... North of San Francisco</p>	<p>Elegant Depression Era Glassware</p> <p><b>ABBA ANTIQUES</b> 1157 Charlie Lane Lilburn, GA 30247</p> <p>Bill &amp; Barbara Adt (404) 279-1942 Shows, Mail Order, &amp; by Appointment</p>
<p><b>THE GLASS URN</b> 456 West Main Street, Suite G. Mesa, AZ 85201 602 / 833-2702</p> <p>Mail Order Shows Open Shop CAMBRIDGE, FOSTORIA, HEISEY, ETC.</p>	<p><b>ANTIQUES ON THE MALL</b> SPECIALIZING IN CAMBRIDGE GLASS</p> <p>Stagecoach Mall - Bldg. 3 - Norwich, OH Virginia Bennett 614/432-4483 64183 Warne Drive, Cambridge, OH 43725</p>	<p><b>BUYING</b> COLORED CAMBRIDGE GLASS (Send List with Prices)</p> <p><b>FEDERAL HILL ANTIQUES</b> 78 Maple Street Bristol, CT 06010</p>
<p><b>ETTELMAN'S DISCONTINUED</b> CHINA &amp; CRYSTAL Cambridge a Specialty</p> <p>P.O.Box 6491-CB Corpus Christi, TX 78466 Phone (512) 888-8391 Include S.A.S.E.</p>	<p><b>D &amp; D ANTIQUES</b> Columbus, Ohio</p> <p>DICK SLIFKO SHOWS ONLY</p>	<p><i>YOU CAN ADVERTISE YOUR ANTIQUE SHOP HERE!</i></p>
<p><b>THE GLASS CUPBOARD</b> 39 Shire Oaks Drive Pittsford, New York 14534</p> <p>Marcia Ellis Cambridge, Duncan Miller (716) 586-7596 Shows, Mail Order, Appt.</p>	<p><b>JUDY'S ANTIQUES</b> Judy Bennett 422 S. Ninth Street (Corner of Jefferson) Cambridge, Ohio 43725</p> <p>BUYING Ph. 614-432-5855 SELLING <i>Cambridge Glass my Specialty</i></p>	<p><b>"HAPPINESS IS" - THE STULTZS</b> 3106 Warren Court Glen Allen, VA 23060</p> <p>SHOWS &amp; MAIL 804-672-8102 (RICHMOND AREA) AMERICAN MADE GLASS CIRCA 1890-1960.</p>
<p><i>YOU CAN ADVERTISE YOUR ANTIQUE SHOP HERE!</i></p>	<p><b>GREEN ACRES FARM</b> 2678 Hazelton Etna Rd., Pataskala, OH 43062 (State Route 310 North)</p> <p>Sat. &amp; Sun. 1-7 PM 614/927-1882 Antiques, Crystal Glass and Collectibles</p>	<p><b>CROW'S NEST ANTIQUES</b> Constance Crow Buying &amp; Selling Elegant Depression Era Glassware</p> <p>Austin Antique Mall 7511 McCann Austin, TX 78758 (512) 371-0244</p>
<p><b>THE HITCHING POST</b> 7467 S. R. 88 Ravenna, OH 44266</p> <p>Ph. 216-296-3686 D. McDaniel CAMBRIDGE — HEISEY — GENERAL LINE</p>	<p><b>PATCHES OF VIRGINIA</b> Specializing in China and Glass Virginia T. Houston</p> <p>34116 Roberts Rd., Eastlake, OH 44095 Phone: (216) 975-8315</p>	<p><b>CRYSTAL LADY</b> 1817 Vinton St., Omaha, NE 68108</p> <p>Joann D. Hagerty Bus. (402) 341-0643 Res. (402) 391-6730 Specializing in Elegant Glass &amp; Collectables</p>
<p><i>YOU CAN ADVERTISE YOUR ANTIQUE SHOP HERE!</i></p>	<p><b>REMEMBRANCES</b> 7597 Daphne Dr., No. Syracuse, NY 13212</p> <p>Shirley S. Ladouceur 315 / 458-5297 ANTIQUES and COLLECTIBLES MAIL ORDER SHOWS APPOINTMENTS</p>	<p><b>MARGARET LANE ANTIQUES</b> 2 E. Main St., New Concord, OH 43762 Lynn Welker 614/826-4418</p> <p><b>CAMBRIDGE GLASS MATCHING SERVICE</b> Hours Mon.-Fri. 1-5 PM or by Appointment</p>
<p><b>GLASS RESTORATION</b></p> <p>BRILLIANT CRYSTAL ELEGANT DEPRESSION</p> <p>DON &amp; LYNNE WORMLAND MT. CLEMENS, MICH. (313) 791-9191</p>	<p><b>WATKINS</b> (Fine Quality) <b>CAMBRIDGE GLASS SHOP</b> 1429 Marquand Ave. (Corner of Woodlawn) Cambridge, OH (614) 432-4460 Lana Watkins</p>	<p><b>HELEN &amp; JIM KENNON</b> Heisey, Cambridge, Fostoria, Duncan, Imperial, Fenton, Tiffin P.O. Box 114 Brookville, OH 45309 PH: (513) 833-5406 SHOWS ONLY</p>



# National Cambridge Collectors, Inc.

P. O. Box 416, Cambridge, Ohio 43725

*A nonprofit organization dedicated to the preservation and study of Cambridge Glass*

You Are Cordially Invited  
To Become A Member Of The

NATIONAL CAMBRIDGE COLLECTORS, INC.

Benefits derived from membership include: receipt of our club publication, The Cambridge CRYSTAL BALL; informative Quarterly Meetings; Antique Shows; Auctions; other special events; and unlimited admission to the museum.

The Cambridge CRYSTAL BALL is published the first of each month. This newsletter contains educational and interesting articles, questions and answers, information on reproductions and reissues, notices of all club functions, classified advertisements, dealers directory, and many other features of interest to collectors of Cambridge Glass. Yearly dues are \$15.00 for Individual Members and \$3.00 for each Associate Member. All members have voting rights, but only one issue of the CRYSTAL BALL will be mailed per household.

Name (please print) \_\_\_\_\_ \$15.00

Mailing Address \_\_\_\_\_

City \_\_\_\_\_ State \_\_\_\_\_ Zip \_\_\_\_\_

Associate Members: (Must be at least 12 years of age and living in the same household.)

1. Name \_\_\_\_\_

2. Name \_\_\_\_\_

3. Name \_\_\_\_\_

Total number of Associate Members \_\_\_\_\_ @ \$3.00 each ..... \$ \_\_\_\_\_

TOTAL AMOUNT ENCLOSED: \$ \_\_\_\_\_

Please make check payable to: NATIONAL CAMBRIDGE COLLECTORS, INC.

Recommended by \_\_\_\_\_

### February Forecast

*Said day, with favor,  
A sprig of luck,  
The groundhog,  
Species woodchuck,  
Will spring the look  
Of hibernation  
To rub stuck eyes  
In consternation.  
  
Tunnel a trail  
Straight through the bog  
Into sunlight,  
Mayhap fog.  
  
To signal winter  
In or out  
Beyond the shadow  
Of a doubt.*



## FEBRUARY 1991

### National Cambridge Collectors, Inc.

P. O. Box 416, Cambridge, Ohio 43725

FIRST-CLASS MAIL  
U.S. POSTAGE  
PAID  
So. Vienna, Ohio  
45369  
Permit No. 15

**FIRST CLASS MAIL**

### Membership Renewal Notice

This is your **last** issue of the *Crystal Ball*—if the date on your address label reads 1-91.

*Please renew now!*