



# Cambridge Crystal Ball

Published monthly by the National Cambridge Collectors, Inc.  
to encourage and report the discovery of the elegant and boundless product  
of the Cambridge Glass Company of Cambridge, Ohio

Issue No. 219

July 1991

## Charming Candelabra Conception



One of the highly interesting windows on the fifteenth floor of The Merchandise Mart, Chicago, recently was the candelabra display arranged by the Cambridge Glass Co. Various types of single and multiple candle holders in a variety of finishes and decorations were arranged most tastefully. The display exemplified the extent and variety of the Cambridge line. Manager Baumgardner and associates were the recipients of much praise for the delightful window arrangement.

Taken from "China, Glass and Lamps"

May 1938

"CANDLESTICKS & CANDELABRA"  
1991 Convention Theme

See related article, inside, beginning on page 4.

# Cambridge Crystal Ball

Official publication of National Cambridge Collectors, Inc., a non-profit corporation with tax exempt status. Published once a month for the benefit of its members.

Membership is available for individual members at \$15 per year and additional members (12 years of age and residing in household) at \$3 each. All members have voting rights, but only one *Crystal Ball* will be mailed per household.

Back issues of the *Crystal Ball* are available (beginning with Issue No. 1, May 1973) for members only. Cost: \$1.00 each or 12 issues for \$10.00.

## 1990-91 Officers & Committee Chairpersons

President	Mark A. Nye
Vice-President	Cynthia A. Arent
Secretary	Joseph Andrejcek
Treasurer	William C. Smith
Sergeant-at-Arms	Judy Momirov
Acquisition	Joy McFadden
Budget & Finance	David B. Rankin
By-Laws	Marybelle Moorehead
Membership	Phyllis D. Smith
Museum—Facilities	Doyle Hanes
Museum—Interior	J.D. Hanes
Non-Glass Items	J.D. Hanes
Nominating	Willard P. Kolb
Program	Cynthia A. Arent
Project	R. Clarke West
Publications	William C. Smith
Public Relations	Bill & Phyllis Smith
Publicity	Cynthia A. Arent
Study Group Advisor	Judy Momirov
1991 Auction	Lynn M. Welker
1991 Antique Show	Joy R. McFadden, Mary Beth Hackett
1991 Convention	Marybelle Moorehead
1991 Flea Market	Marlene & Harold Snyder
Crystal Ball Editor	Phyllis D. Smith

## Classified Advertising Rates

10 cents per word \$2.00 minimum  
We cannot mix type size in classified advertisements. Abbreviations and initials will count as words. Payment in full **must** accompany all ads.

## Display Advertising Rates

(Camera-ready ads preferred)	Members	Non-Members
1/8 page	\$ 6.00	\$10.00
1/4 page	10.00	15.00
1/2 page	18.00	25.00
3/4 page	25.00	35.00
Full page	33.00	45.00

## Dealers Directory

Five-line maximum \$18.00 for 12 months

Cambridge *Crystal Ball* assumes no responsibility for items advertised and will not be responsible for errors in price, description or other information.

*Advertising copy, articles, club news and notices must be in our hands by the 10th of each month to assure publication in our next issue.*

Paid advertisements containing reproductions or new glass will not knowingly be accepted for publication.

Opinions or information stated in any signed article or letter printed in the *Crystal Ball* are those of the authors and may or may not agree with National Cambridge Collectors, Inc. The Editor reserves the right to refuse and to edit any material submitted for publication so as to conform with the editorial style of the *Crystal Ball*.

## Please Address All Correspondence to:

National Cambridge Collectors, Inc.  
P.O. Box 416 Cambridge, Ohio 43725  
**President** — Mark A. Nye, 305/221-0343  
**Secretary** — J.D. Hanes, 614/432-6794  
**Editor** — Phyllis Smith, 513/323-3888  
**N.C.C. Museum** — 614/432-4245

Please notify us immediately of any change in your address.

Please enclose an SASE when requesting information.

# CAMBRIDGE GLASS BOOKS FOR SALE

By National Cambridge Collectors, Inc.

- **Colors in Cambridge Glass\***  
128 pages, 60 color plates, fully indexed  
Hardbound with price guide ..... \$19.95
- **1930-34 Cambridge Glass Company Catalog Reprint\***  
250-page reprint of original catalog  
Paperback with price guide ..... \$14.95
- **1949-53 Cambridge Glass Company Catalog Reprint\***  
300-page reprint of original catalog  
Paperback with price guide ..... \$14.95
- **1956-58 Cambridge Glass Company Catalog Reprint\***  
164-page reprint of original catalog  
Paperback ..... \$6.95

\*For NCC members only, the above publications are available at a 10 percent discount.

By Bill and Phyllis Smith

- **Cambridge Glass 1927-1929**  
66-page reprint of original catalog  
Paperback w/identification guide ..... \$7.95

By Cambridge Buffs Study Group

- **Nearcut**  
108-page reprint of 1910 Cambridge catalog  
Paperback with price guide ..... \$9.95

By Mark A. Nye

- **Cambridge Rose Point**  
94 pages, fully indexed  
Paperback with value guide ..... \$12.95

By Mary, Lyle and Lynn Welker

- **Cambridge Glass Company**  
120 pages of reprints from eight old catalogs  
Paperback ..... \$10.00
- **Cambridge, Ohio Glass in Color II**  
Spiralbound ..... \$5.95

By Harold and Judy Bennett

- **1903 Cambridge Glass Company Catalog Reprint**  
106-page reprint of an original catalog  
Paperback ..... \$7.50

## Address your orders to:

Books  
National Cambridge Collectors, Inc.  
P.O. Box 416  
Cambridge, OH 43725

Please add postage and handling to your order (first book, \$2.00; each additional book, 50 cents). Ohio residents add 6 percent state sales tax.

Dealer discounts available—please write!

## From The President's Desk

It has become a tradition to include the July issue of the Cambridge CRYSTAL BALL in the Registration packet of those members attending the Annual Convention, and to mail the balance of the copies at the Cambridge post office the following Monday. The former saves a few dollars in postage expense each year and does give conventioners a "preview" of the July issue before the general membership sees it; while the latter is done to maintain the club's "First Class" mailing permit at the Cambridge post office.

To those members reading this at the Convention, I would like to take this opportunity to say "Welcome to Convention 1991." I hope the Convention and its activities are to your satisfaction and fulfill your expectations. If they are not what you expect or would like to see, please make your thoughts known to our chairman, Marybelle Moorehead, any officer or Board member, or speak up at the Annual meeting on Sunday morning, June 30th.

While at the Convention, do not rely on schedules published in prior months. From time to time things change, due to last minute problems, etc., and I would not want anyone to miss an event they wanted to attend. Current schedules are posted and are announced at general sessions.

I do plan on speaking with everyone attending the Convention; however, if it appears I have somehow missed you, won't you please come up to me and say "Hello."

As I urged last month, if there is anyway you can arrange to do so, attend the Former Workers Reunion on Sunday (June 30th) afternoon. It makes the glass personal as these are a few of the many people who made up the Cambridge Glass company, and who produced and sold the glass we collect. As noted elsewhere in this issue, time once again has taken its toll with the passing of Walter O'Malley, longtime Cambridge Glass Company Paymaster. It will not be too many years before all the workers are gone and with them the stories they have to tell. Do plan to attend the Reunion!

If you are a late arrival, either to the Cambridge area, Convention Show or Saturday morning Flea Market, don't think for one minute that everything has been sold, or that there are not bargains to be had or sleepers to be found. In past years I have shopped all three, long after the crowds were gone, and found amazing items: a very unusual Cambridge label, the specialty label for Rock Crystal; a child's set in the very early green color; and stemware in seldom seen colors and with infrequently seen cuttings decorations and etchings. Look and you will add to your collection.

Summer has arrived and America is on the move. If you travel this summer, be careful, as we do not want to lose you, personally or as a member. Use your seat belts. A buckled seat belt saved my life, or at the very least prevented very serious chest injuries; and just a few weeks ago, saved the life of a co-worker. And, besides, we want to hear all about and see, at the November meeting, the unusual pieces of glass you find during the coming months.

Do not forget the August Quarterly meeting and the picnic on Saturday, August 3rd. By the time those of you who are not at the Convention read this, it will be just a month or maybe even less away. Specifics are elsewhere in this issue (see page 20).

Once again, I traveled to Ohio in May, and attended the Springfield Flea Market extravaganza. Like so many flea markets around the country, it has grown in size, but at what price to the buyer? Walking past sellers of everything but collectibles, is not a lot of fun and it is readily apparent collectible dealers are not finding older glass in large quantities, from any maker. As has become a tradition, or so it seems, it rained the weekend of the Extravaganza, making Saturday shopping a muddy experience, but then when did a little mud or rain ever slow down a true flea marketeer!

continued on page 7

# CANDLESTICKS

## PART IV

by MARK A. NYE

Some of the more unusual Cambridge candlesticks come from two lines, Pristine and Virginian. Both of these lines were introduced in the 1930s, Pristine in 1937 and Virginian in 1938. While the Pristine line survived until the late 1950s, and the company's demise; the Virginian line was dropped at some point in the 1940s, probably during the war years. The history of the Pristine line was covered in two articles, published in the November 1986 and January 1987 issues of the Cambridge CRYSTAL BALL, and will not be repeated here.

The Virginian line was described in the February 1938 issue of "China, Glass and Lamps" as follows:

"The 'Virginian' is the new pressed line shown by the Cambridge Glass Co. -- a diamond pattern developed in a line of table items, decorative pieces and stemware with the design blown in the bowl. It is a reproduction of an early American design, and is done in crystal only."

"The salad bowl....is from the Cambridge Glass Co. -- one of their newest pressed lines, called 'Virginian.' Early American in theme, this new design has a diamond pattern and a deeply-ridged edge line, and it is shown in a full line of flatware and fancy items, together with stemware."

The pattern is much more evident in such pieces as relishes, seen above the candlesticks on the catalog page reprinted here (next page), than it is on the candlesticks.

There is a total of five Virginian candlesticks and three of these were used to make up candelabra. The candlesticks are designated #V493, #V498, #V499, #V501 and #V502; while the candelabra are #V507, #V509, #V511 and #V512 (here the V stands for Virginian). As stated in the trade journal quotes, Virginian was made in crystal only and hence Virginian candlesticks will be found only in crystal. Note carefully the three different prisms used on the Virginian candlesticks and candelabra. The #V499 candlestick uses a single #4 prism while the

#V507 uses the more familiar #1 prism and the #V509, #V511 and #V512 use the #5 prism. The reader should also pay close attention to the different types of bobèches used; the #23 with #V527 and #V511, while the #V509 and #V512 utilized the #27 bobèche. None of the Virginian candlesticks or candelabra are frequently seen and it will be a very lucky collector who is able to collect them all.

Note the basic shape of the Virginian candlestick #499. This same shape was also used in the Caprice line (#C70) and in the Martha line where the #497 candelabrum has the same basic shape.

Information has been found that indicates the Virginian #501 candlestick may have been etched Rosepoint. However, this author has yet to see or hear of the existence of an actual example. The possibility also exists that pieces of the Virginian line may have been frosted, much in the same manner of the Caprice alpine decoration. However, other than in the case of a few pieces of stemware, this too remains to be proven. Other than these two possibilities, Virginian candlesticks and candelabra were not decorated.

Apparently the Virginian line was discontinued sometime during the 1940s, as it does not appear in the 1949 Cambridge catalog or any of its supplements. The relative infrequency with which it is seen indicates this was not a major pattern for Cambridge and that only a small to moderate amount was made and sold.

A few of the Virginian molds were, during 1956-57, brought out of storage and altered to create the Jenny Line line. However, none of the candlestick molds were so used.

All of the Pristine candlesticks and candelabra shown on the catalog page (reprinted on page 6) were in the line prior to January 1940. They were either a part of the line from the beginning or added during the years 1937-39. Of the six basic candleholders shown on this page, only one, the #P494, remained in the line as the 1940s ended.

Four other Pristine candlesticks are shown with this article; these being the #P500 6½" 1-lite candlestick (sometimes referred to as the Leaf candlestick) and the three Round candlesticks #P489, #P490 and #P491, companions to the previously discussed square candlesticks.

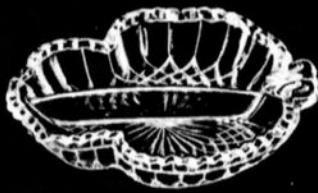
continued on page 7



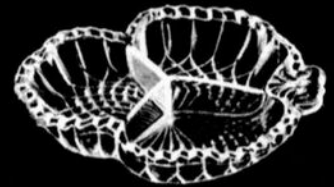
# The Cambridge Glass Company



## Virginian



No. 202—6 in. 2 Compt.  
Relish 1 Hdl.



No. 203—6 in. 3 Compt.  
Relish 1 Hdl.



No. 207—8 1/2 in. 3 Compt.  
Celery & Relish



No. 211—10 in. 3 Compt.  
Celery & Relish



No. 493 2 1/2 in. Candlestick



No. 502—5 1/2 in.  
2 Holder Candlestick



No. 498—6 1/2 in.  
Candlestick



No. 507—7 in. Candelabrum  
(w/No. 23 Bob. & 5  
No. 1—2 1/2 in. Prisms)



No. 499 7 1/2 in.  
Candlestick w/1 prism



No. 512—6 in. 2 Holder  
Candelabrum w/No. 27 bob.  
& 12 No. 5 prisms



No. 501—6 in.  
2 Holder Candlestick



No. 509—6 in. 2 Holder  
Candelabrum (w/No. 27 bob.  
& 12 No. 5 Prisms)



No. 511—6 in. 2 Holder  
Candelabrum (w/No. 23 bob.  
& 10 No. 5 Prisms)

JANUARY 1, 1940



# The Cambridge Glass Company



## PRISTINE

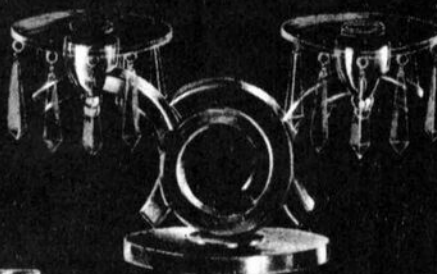
Patent Nos. 103,538, 104,573, 103,578, 104,722



502-6 in. 2 Lt. Candlestick w/2 No. 4 Prisms



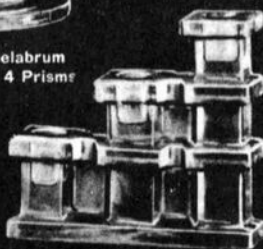
505-5½ in. Candelabrum w/Bobèche & 9 No. 4 Prisms



6 in. Candelabrum w/ Prisms



497-5½ in. 1-Lite Candlestick w No. 4 Prism



503-6 in. 3 Lt. Candlestick



498-4 in. Candlestick



494-3½ in. Candlestick



507-7½ in. Candlestick w/Bobèche & 8 No. 4 Prisms



498-7 in. Candlestick



602-6 in. Ftd. Vase



606-9½ in. Ftd. Bud Vase



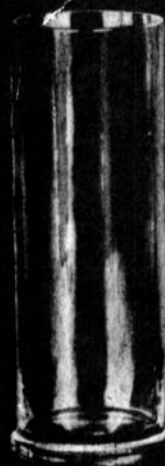
604-8 in. Ftd. Bud Vase



506-3½ in. Candlestick (No. 27 bobèche & 6 No. 6 prisms)



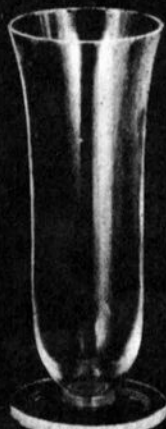
580-8 in. Flip Vase also 583-9½ in. Vase 593-12 in. Vase Cut Top and Bottom



592-12 in. Vase Cut Top and Bottom



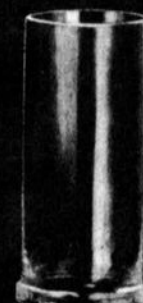
588-11 in. Vase Cut Top and Bottom



612-11 in. Ftd. Vase



584-10 in. Vase Cut Top and Bottom



579-8 in. Vase Cut Top and Bottom

JANUARY 1, 1940

Cambridge, Ohio - - - U. S. A.



Of these, only the #P500 was illustrated in the 1949 Cambridge catalog and it was the last of this group of Pristine candleholders to be introduced, dating to circa 1941. The Round Pristine candlesticks were probably a part of the line from its earliest days.



Since Pristine was essentially a crystal line, these Pristine candlesticks and candelabra will only be found in crystal. The #P500 candlestick will be found etched Rosepoint and perhaps with other etchings as well. The #P498, #P502, #P507, and the 6" candelabrum with prisms (aka #P520) were available from the 1940 price list with the gold decoration D/1054 while #P494, #P506, #P502 and the #P520 were offered with the gold decoration D/1050. Both of these decorations were based on an etched laurel band: D/1054 has a gold band on either side of the etching while D/1050 consists of the etching being gold encrusted.

The following is taken from the text of a Cambridge advertisement for Pristine with D/1050 that appeared in the October 1930 issue of "China, Glass and Lamps."

"Because it achieves special distinction without extravagance, Cambridge Gold Encrusted Crystal is an ideal gift choice. The Cambridge process (developed in America) actually fuses pure gold deep into the crystal

at great heat, creating a decoration of satin richness, as permanent as it is beautiful and surprisingly moderate in cost."

The #P520 6" candelabrum with two #25 bobeches and 18 #4 prisms listed in 1940 for \$157.50 per dozen or \$26.25 per pair. The #P494 candlestick listed for \$33.75 per dozen or \$5.62 per pair. I will let the reader judge if these are "surprisingly moderate" prices.

In addition to the Virginian and Pristine candlesticks, study the illustrations of the Pristine vases and the other pieces of Virginian shown. With the exception of the flip vase, the Pristine vases have the characteristic base which should serve to identify them if they are given more than a cursory glance. The Virginian pieces are seldom seen and could be overlooked if the shopper was not being diligent.

To be continued . . . . .

---

---

PRESIDENT . . . . . continued from page 3

I hope to have an announcement at the Convention regarding the availability of the Committed to Cambridge Awards. I do appreciate the patience of those who are awaiting their awards and can only say "Hang in there a little longer."

I have yet to understand how a piece of glass, wrapped identical to all those around it and located in the center of a rigid wall box, can break during shipping, but it does happen. I just had this happen with the foot, stem and bowl of a tall sherbet arriving as three distinct pieces. The bowl has a hole in it where the stem was connected; and since the bowl was etched Yukon (frosted bands) I am going to make it into a Christmas tree ornament and enjoy the piece in that manner. I guess this just goes to demonstrate Murphy of Murphy's Law (if it can happen, it will) is alive and well.

To those attending the Convention, ENJOY; to all others, I am sorry you couldn't make it this year and urge you to start making plans for next year.

Until next time, Collect Cambridge.

*Mark*

# NATIONAL CAMBRIDGE COLLECTORS, INC.

## Financial Statements

### Balance Sheets

December 31, 1990 and 1989

#### Assets

	<u>1990</u>	<u>1989</u>
Current assets:		
Cash	\$ 44,319	24,286
Accounts receivable	-	75
Inventories	7,303	10,260
Prepaid expenses	<u>1,138</u>	<u>1,169</u>
	<u>52,760</u>	<u>35,790</u>
Property and equipment:		
Land	24,500	24,500
Buildings	51,214	51,214
Building improvements	41,549	40,567
Furniture and equipment	12,951	10,776
Display fixtures	15,348	15,348
Museum contents (Note 2)	<u>43,592</u>	<u>39,104</u>
	189,154	181,509
Less accumulated depreciation	<u>60,328</u>	<u>51,293</u>
	<u>128,826</u>	<u>130,216</u>
Other assets:		
Deposits	<u>44</u>	<u>44</u>
	\$ <u>181,630</u>	<u>166,050</u>

#### Liabilities and Fund Balances

	<u>1990</u>	<u>1989</u>
Current liabilities:		
Accounts payable	\$ 115	117
Deferred revenue	8,900	7,844
Accrued and withheld taxes	<u>280</u>	<u>1,219</u>
	<u>9,295</u>	<u>9,180</u>
Fund balances:		
Operating fund	25,444	22,918
Museum fund	<u>146,891</u>	<u>133,952</u>
	<u>172,335</u>	<u>156,870</u>
	\$ <u>181,630</u>	<u>166,050</u>



NATIONAL CAMBRIDGE COLLECTORS, INC.

Statements of Activity and Changes in Fund Balances

Years Ended December 31, 1990 and 1989

	Operating Fund	Museum Fund	Total	
			1990	1989
<b>Support and revenue:</b>				
Admissions	\$ -	847	847	701
Memberships	14,659	-	14,659	13,076
Donations	100	12,490	12,590	8,581
Auxiliary activities and sales	8,270	23,576	31,846	32,340
Interest	764	1,283	2,047	1,155
Other	-	2,962	2,962	1,776
	<u>23,793</u>	<u>41,158</u>	<u>64,951</u>	<u>57,629</u>
<b>Expenses:</b>				
Supporting services	15,565	19,256	34,821	32,899
Cost of auxiliary activities and sales	<u>5,702</u>	<u>8,963</u>	<u>14,665</u>	<u>16,813</u>
	<u>21,267</u>	<u>28,219</u>	<u>49,486</u>	<u>49,712</u>
Excess of support and revenue over expenses	2,526	12,939	15,465	7,917
Fund balances - beginning	<u>22,918</u>	<u>133,952</u>	<u>156,870</u>	<u>148,953</u>
Fund balances - ending	\$ <u>25,444</u>	<u>146,891</u>	<u>172,335</u>	<u>156,870</u>

Clark, Schaefer, Hackett & Co.  
CERTIFIED PUBLIC ACCOUNTANTS

Board of Directors  
National Cambridge Collectors, Inc.  
Cambridge, Ohio

We have reviewed the accompanying balance sheets of National Cambridge Collectors, Inc. as of December 31, 1990 and 1989, and the related statements of activity and changes in fund balances, statements of cash flows, and supporting schedules on pages 7-8, for the years then ended in accordance with standards established by the American Institute of Certified Public Accountants. All information included in these financial statements is the representation of the management of National Cambridge Collectors, Inc.

A review consists principally of inquiries of Company personnel and analytical procedures applied to financial data. It is substantially less in scope than an examination in accordance with generally accepted auditing standards, the objective of which is the expression of an opinion regarding the financial statements taken as a whole. Accordingly, we do not express such an opinion.

Based on our review, we are not aware of any material modifications that should be made to the accompanying financial statements in order for them to be in conformity with generally accepted accounting principles.

*Clark, Schaefer, Hackett & Co.*

Springfield, Ohio  
May 7, 1990

# Museum Activities

by J. D. HANES

As many of you are reading this, you are at the 1991 Convention. Let me give a big Guernsey County Welcome to you! To those of you who could not attend, we hope to see you in the future years.

Museum visitors have been very numerous this month of May. I think we should thank Mother Nature for some of this business. With the excessive heat she gave us in May, I think many people were looking for a nice air-conditioned place to visit.

We also had a few members stop in while they were in the area. The farthest one from Cambridge, that was here, was Sandi Swanson from Washington state. She is on a "round the country" trip by herself. She spent two days here at the Museum and, of course, hit most of the local shops. Most women, that I know of, would not dream of traveling over 5,000 miles by themselves.

Tarzan Deel, Jr., of Virginia, stopped in on his way to the Springfield Flea Market Extravaganza. He is always a real nice person to talk with. I know he will be here at Convention.

We have been working on getting the Museum in the best possible shape for the Convention. We have placed some new pictures on the walls that we have received. Two of the most prominent are large photographs of Mr. & Mrs. Arthur J. Bennett. They are in original frames and still have the original thick and heavy matte, which explains the stain that is on them. These were given to the Museum by Mr. & Mrs. Harold Tidd of Cambridge. Mr. Tidd, who recently passed away, was first married to Jean Orme, who was Mr. & Mrs. Bennett's granddaughter. Jean passed away shortly after their son Don was born. Don and I went to school together from kindergarten through high school. We really appreciate their generous donation.

Other changes have been made in the library area, to make it more usable; and of course, in the glass displays.

We are also working on the outside of the Museum to get ready for the National Trail Festival which, for the first time, is coming as far West as Cambridge. It will be held on June 7, 8 and 9. It is a festival that is billed as the longest in the country. It started in Maryland and progresses each weekend along the National Trail or National Road, which is now known as U.S. Route 40. This year, it is going as far West as Zanesville, Ohio. The organizers hope that some day it will go as far West as the Mississippi River and encompass all weekends from May through September. We will be holding some special events here at the Museum for this. I will tell you more about this Festival next issue.

I only have two glass donations to report this month. They are:

Mark Nye - #3790 Simplicity sherbet with leaf design cut into the bowl, that we have so far not identified.

Doyle and J.D. Hanes - #3675 wine etched Blossom Time.

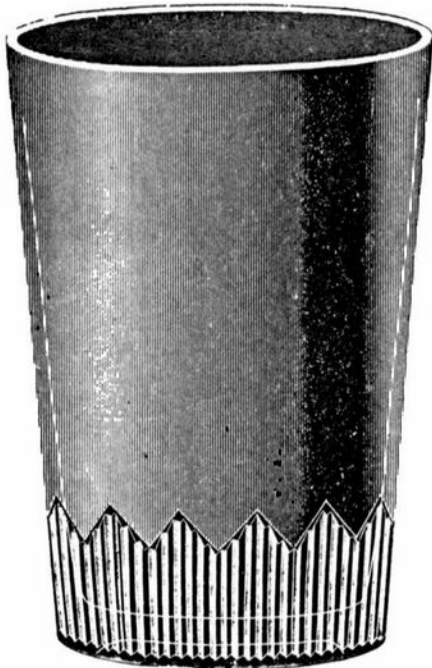
As always, we thank everyone for their donations to the Museum, and always look forward to any and all of them.

I would like to thank Mark Nye for the work that he did in the front of the Museum while he was here in May. I would also like to thank Jeff Ross for working the Museum for me during the Board of Directors meeting that was held in May.

I had better end now since I know that Phyllis will have many things to put in the CRYSTAL BALL for Convention. As always if you are ever near the Museum, please stop in, and keep collecting Cambridge.

# Common Tumblers.

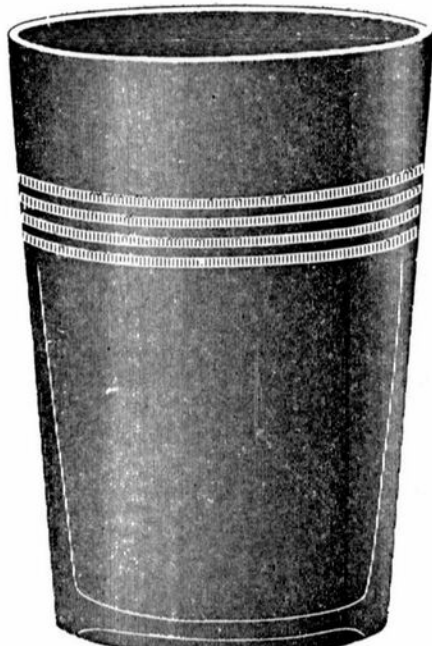
SCALE, FULL SIZE.



No. 169 8 ounce Tumbler.  
Packed 23 dozen in a barrel.



No. 170 9 ounce Tumbler.  
Packed 23 dozen in a barrel.



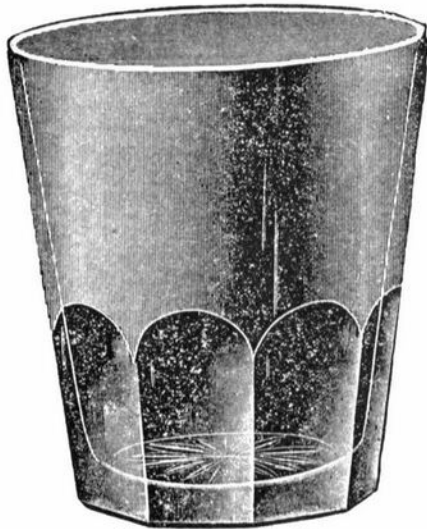
No. 171 9 ounce Tumbler.  
Packed 23 dozen in a barrel.



No. 172 8 ounce Tumbler.  
Packed 23 dozen in a barrel.

# Common Tumblers.

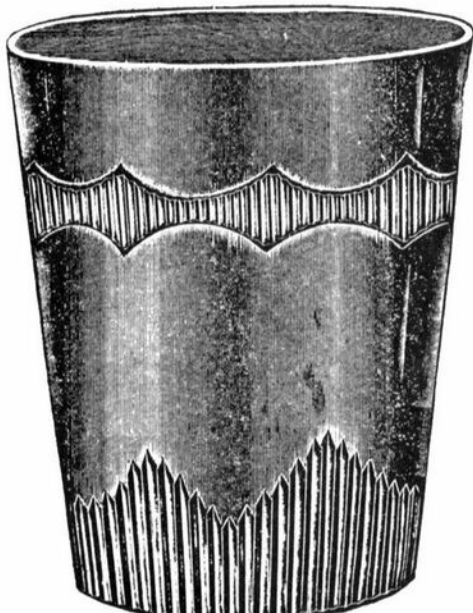
SCALE, HALF SIZE.



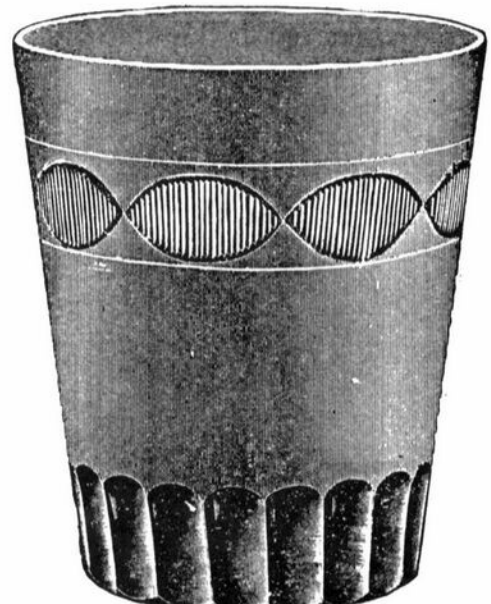
No. 173 6 ounce Tumbler.  
Packed 30 dozen in a barrel.



No. 174 5 1/4 ounce Tumbler.  
Packed 30 dozen in a barrel.



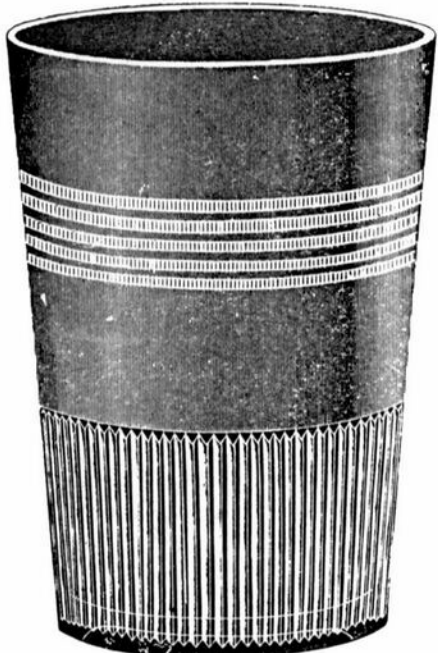
No. 175 9 ounce Tumbler.  
Packed 23 dozen in a barrel.



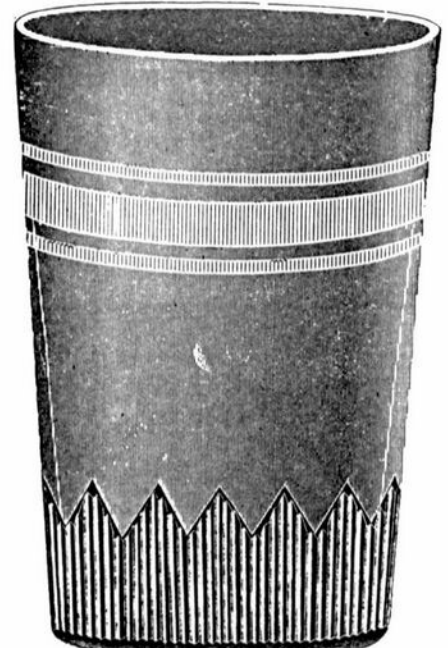
No. 176 9 ounce Tumbler.  
Packed 23 dozen in a barrel.

# Common Tumblers.

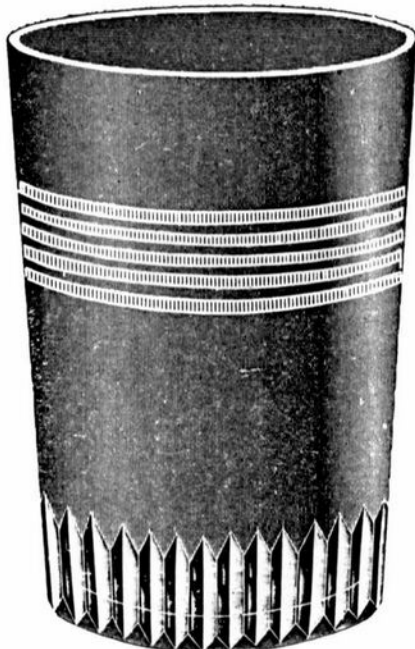
SCALE, FULL SIZE



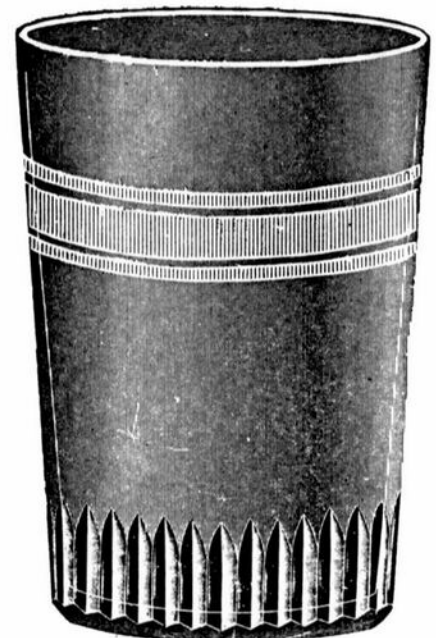
No. 177 9 ounce Tumbler.  
Packed 23 dozen in a barrel.



No. 178 9 ounce Tumbler.  
Packed 23 dozen in a barrel.



No. 179 8 ounce Tumbler.  
Packed 23 dozen in a barrel.



No. 180 8 1/4 ounce Tumbler.  
Packed 23 dozen in a barrel.

# Common Tumblers.

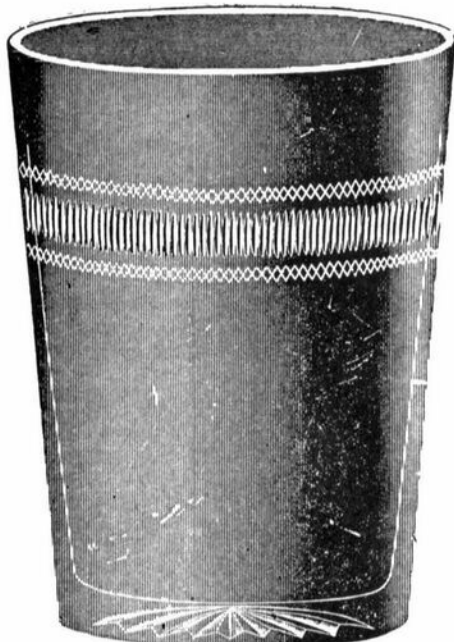
SCALE, FULL SIZE.



No. 181 8 ounce Tumbler.  
Packed 23 dozen in a barrel.



No. 182 8 ounce Tumbler.  
Packed 23 dozen in a barrel.



No. 183 9 ounce Tumbler.  
Packed 23 dozen a barrel.



No. 184 9 ounce Tumbler.  
Packed 23 dozen in a barrel.

## In Memoriam

"Death is just a natural thing,  
Like the closing of a door.  
As we start upon a journey  
To a new and distant shore ...  
So let your grief be softened  
And Yield not to despair --  
You have only placed your loved one  
In the loving Father's care."

HELEN STEINER RICE

---

MARJORIE MOSSER ADDISON  
Cambridge, Ohio

We have received the sad news that longtime member, Marjorie Mosser Addison, passed away on April 1, 1991. Marjorie was N.C.C. member #68. Over the years, she has been a staunch supporter and friend to N.C.C.

She was the eldest of nine children born to Orie J. and Barbara Jane Mosser. Her father, Orie J. Mosser was Plant Manager of the Cambridge Glass Company for many years, retiring in 1957 with more than fifty years service to the company.

Marjorie is survived by two sons, James in Marietta, Ohio, Ted in California, and numerous other family members and friends, including her youngest brother Tom Mosser, owner of Mosser Glass Company. She will be greatly missed by all who knew and loved her.

---

JOHN D. McNABB  
Elkland, Missouri

Word has been received that our good friend John D. McNabb passed away, in his home, at 10:30 pm, June 10, 1991. John and his wife Lenora have been members of N.C.C. for more than 12 years and were faithful in their attendance of our conventions until John became ill a few years ago.

John was retired from Swift-Eckrich Company and was a member of Elkland Methodist Church. He collected Nude stemmed pieces, as well as Caprice and other Cambridge items.

He is survived by his wife Lenora, three sons, John, Jr., Jim and Joe, three grandchildren, two brothers and many other relatives and friends. We are all going to miss John.

---

BILL BALCER  
Pekin, Illinois

We were sorry to receive the news that former N.C.C. member, Bill Balcer, passed away on May 23, 1991. Bill, age 46, had been ill for more than two years, suffering from A.L.S. (Lou Gehrig's disease).

He was well known, in the glass collecting field, as a dealer and collector of depression and other fine collectible glass. He collected the Cambridge Wildflower pattern and children's dishes.

Bill is survived by his parents and sister, his partner, Dan Kramer, and many, many friends in the world of glass. His smiling face and sweet disposition will be missed by all who knew and cared for him.

---

WALTER T. O'MALLEY  
Dunedin, Florida

We don't know the exact date, but we have been informed that Walter T. O'Malley, former Cambridge Glass employee, passed away sometime during the past few months.

We had received a letter from him dated January 4, 1991, stating his interest in the Cambridge Museum and hoping to visit it soon, along with his brother Paul who is also a former employee. Walter was Paymaster for the Cambridge Glass plant right up to the time of it's closing.

Walter is survived by his wife, his brother Paul and other family members and friends.

---

HARRIET HILDEBRAND  
Dallas, Texas

Mary Martha Mitchell has passed on the sad news that Harriet Hildebrand, wife of former Sales Manager for the Dallas, Texas area, Paul Hildebrand, died sometime during 1990.

Mrs. Hildebrand is survived by her husband and other family members and friends.

---

The membership of N.C.C., Inc., joins in sending this Expression of Sympathy to the family members and friends of each of these folks. Each, in their own way, have made an unforgettable impression on the lives of each of us.

---

## — Classified —

FOR SALE: Personal collection of etched Daffodil. Send SASE. Wanted: goblets or other pieces of Achilles. Robert Cole, 36260 Douglas Terrace, Gurnee, IL 60031. Phone: 708/356-7561.

FOR SALE: #3121 wine, gold krystal \$12. #646 Apple Blossom etched, candlesticks, gold krystal, pair \$50. #3400/4 bowl, etched Diane, \$35. Tally-Ho 17½" Elaine etched plate \$45. #3400/32 11½" bowl \$40. #3121 Wine \$20. Everglade, amber, single candlestick \$25. Rose Point: #1338 candlesticks, pair \$85; #3500 cocktails (7) \$27; #3500 water goblet \$25; #3121 water goblet \$25. Pressed Rosepoint, crystal, cocktails (4) \$37. Prices each and as stated. UPS extra. Robert Taylor, 80 Middle St., Apt. 21, Gloucester, MA 01930. Phone: 508/281-4637.

WANTED: Portia in the #3130 stem, and serving pieces. Contact: Elaine Gilfilen, 2467 Bob Bettis Road, Marietta, GA 30066. Phone: 404/977-7041.

WANTED: Company-Cambridge. Pattern-Cleo. Color-amber-etched items: plates, saucers, tea cups. Contact: Karen Sauli, One East Gate Rd., Danbury, CT 06811. Phone: 203/792-5133.

## Study Club News

### STUDY GROUP #13 - SOUTH WEST OHIO "MIAMI VALLEY, OHIO"

The Miami Valley (Ohio) Study Group held their meeting May 14th, at the Huber Heights Library. There were 13 members present.

There was discussion regarding a possible ongoing project and we will be requesting permission of the NCC Board to pursue this.

This month's program consisted of Decanters. We examined five decanters made by Cambridge: #3145 32 oz. in royal blue; #3450 14 oz. in carmen; #187 Caprice 35 oz. in royal blue; Areo Optic pinch in willow blue with willow blue stopper; and a crystal Life Saver.

"Show & Tell" included a crystal Tally-Ho #1402/45 14 oz. tumbler E/Imperial Hunt Scene; crystal Cambridge arm with round ball in center, smallest of three sizes; crystal Marjorie syrup pitcher signed Near Cut; crystal Radium wine; crystal Chelsea tumbler with cutting; crystal Virginian candlestick with bobèche; late amethyst (?) 9 oz. Georgian tumbler; and crystal Gadroon #3500/122 7" crimped vase.

submitted by Sue Rankin

## WE GET LETTERS

Dear Collectors:

I wish it were possible for me to attend your convention which is coming up the end of this month. It sounds like it is going to be much fun. I wish all those who have worked so hard to make the convention possible the best show possible for their efforts. One of these days I will make the trip so as to enjoy the company of people who love and want to keep American-made glass visible. I only hope we can spur people on to keep our American companies working by buying our own products. If we don't, all our once great companies will go the way of the glass manufacturers. Sincerely, Florence Willmot, FL

• TIFFIN • DUNCAN MILLER • FENTON • HEISEY •

### *The National Duncan Glass Society*

Presents

16th Annual Duncan & Miller Convention

### Show and Sale

July 20 & 21 11:00 A.M. to 5:00 P.M.

### Alpine Club

735 Jefferson Ave., Washington, PA

I-70 Exit 6 ½ Mile

Guest Speaker: Fred Bickenheuser

ADMISSION: \$2.50

For Information Call: (304) 737-2006

• NEW MARTINSVILLE • PADEN CITY • MORGANTOWN •

CAMBRIDGE • FRY • FOSTORIA

IMPERIAL • OLD PRESSED GLASS



# ROBERT W. RILEY

P.O. Box 4180, Springfield, MA 01101  
Phone: 413/737-0884

P & I EXTRA

<u>CRYSTAL</u>	<u>FOREST GREEN</u>
#1237 10" vase, gold encrusted Rosepoint.....\$ 100	#3011 9" Nude candlestick.....\$ 300
#1307 candlesticks, etched Laurel Wreath, pair.....\$ 55	<u>AMBER</u>
#510 Pristine 2 3/4" Ball candlesticks, pair.....\$ 30	#1321 decanter w/#7801 2 oz. sherries (6) set.....\$ 80
#1327 1 oz. cordial/favor vase, etched Chantilly (3) each.....\$ 32	#1337 cig. hldr. w/ashtray ft.....\$ 30
Mt. Vernon #58, 7" vase, with smooth top.....\$ 25	#103 38 oz. guest jug & tumbler...\$ 40
#3122 12 oz. ftd. tumblers, etched Diane (8) each.....\$ 15	<u>MISCELLANEOUS</u>
#3122 9 oz. goblet, etched Diane (4) each.....\$ 15	Light emerald, #647 candelabra, etched Gloria.....\$ 40
#3122 7 oz. tall sherbets, etched Diane (4) each.....\$ 15	Amethyst, #3121 5 1/2" tall, blown comport.....\$ 45
#3122 3 oz. cocktails, etched Diane (3) each.....\$ 20	Amethyst, #319 9 oz. Georgian tumbler.....\$ 15
#3122 2 1/2 oz. wines, etched Diane (3).....\$ 22	Royal blue, Mt. Vernon #31 4 1/2" fruit bowls (3) each.....\$ 15
#657 6" 2-lite candlestick, etched Rosepoint.....\$ 100	Royal blue, #1238 12" vase.....\$ 75
#575 Pristine 9" cornucopia, etched Blossom Time.....\$ 100	Pink, #3500/26 12" fruit basket, w/#3500/32 6 1/2" Rams Head candlesticks, set.....\$ 250
Caprice Alpine #133 low ftd., square bob bon.....\$ 22	Crown Tuscan, #3500/54 6 1/2" 2-hdld. comport w/gold trim.....\$ 25
Caprice Alpine #154 6" 2-hdld., square bob bob.....\$ 28	Ebony, #2366 12" vase.....\$ 45
#633 3-lite epergnes.....\$ 100	Carmen, Mt. Vernon finger bowls and underplates (8) set.....\$ 150
<u>FOREST GREEN</u>	Windsor blue, #32 2 3/4" ashtray/cardholder.....\$ 65
#3500/113 tray.....\$ 35	Willow blue, Everglade #22 6" vase.....\$ 125
#1337 cig. holder w/ashtray ft.....\$ 35	Milk, Caprice #90 3 oz. oil.....\$ 100
	Mocha, Stradivari cordial.....\$ 40
	Moonlight, Stradivari cordial.....\$ 45

*Aladdin*

## ELECTRIC LAMPS, 1930-1956

ALADEX • VELVEX • OPALIQUE • ALACITE

Deluxe Hardbound - Color - 229 pages

\$24.95 ppd. - Add \$3 for first class

Order your Book from the Author:

J.W. COURTER

R-1 • Simpson, IL 62985

NEW - UPDATED PRICE GUIDE

for "NEARCUT" Catalog Reprint

\$2.00 each

(plus large 52¢ SASE)

Send order to:

CAMBRIDGE BUFFS STUDY GROUP #7

c/o Charles A. Upton

68764 N. 8th Street Road

Cambridge, OH 43725

# L. A. MANESS

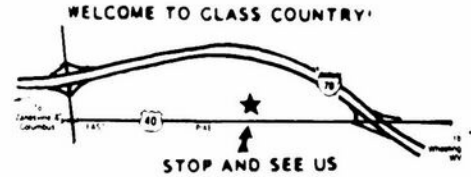
RT. 1, BOX 552, ASHLAND, VA 23005  
(804) 798-1825

C = MARKED UPS \$3.50 CTN

#3900 line Carnation 5-part relish.....	\$ 39
SS#16 crown tuscan 7" compote C...	\$ 65
SS#18 crown tuscan 3-ftd. 10" bowl C.....	\$ 85
Diane 9 oz. goblet w/#3122 stem (5) each.....	\$ 25
Diane 5 oz. ftd. tumbler (6) ea...	\$ 20
<b>DECAGON</b>	
Crystal, 2-hdl. 7" basket C.....	\$ 22
Lt. emerald cup & saucer C (8) set.....	\$ 15
Lt. emerald 7½" plate C (4) ea...	\$ 10
Gold Krystal cup & saucer C (3) set.....	\$ 15
Gold Krystal 8-3/8" plate C (6) each.....	\$ 11

VISA/MASTERCARD WELCOME

# Stage Coach Antique Mall



RT. 40 ONE-HALF MILE WEST OF I-70 EXIT #164  
MANY DEALERS - WIDE SELECTION - PLENTY PARKING

WE FEATURE GLASSWARE OF:  
CAMBRIDGE, HEISEY, FENTON, & FOSTORIA  
Plus Art Pottery & a General line of Antiques

**DORIS AND ROY ISAACS**  
BUY AND SELL  
614-872-3720



7525 EAST PIKE  
NORWICH, OHIO 43767

MON THRU SAT 10-5:30 SUN 12-5:30  
SUMMER EVENING HOURS BY CHANCE



## SEVENTEENTH ANNUAL CONVENTION SHOW AND SALE

Little Rock, Arkansas  
Hall Of Industry, State Fairgrounds  
(W. Roosevelt Rd., I-30, Exit 139 A)

### JULY 13 & 14, 1991

Sat. 10 a.m. to 5 p.m. Sun. 11 a.m. to 5 p.m.  
Admission: \$2.50 (good both days)

36 Top quality dealers from across the United States present an outstanding display of Depression Era Glassware including Cambridge, Imperial, Heisey, Fenton & Fostoria; china; pottery and related items of the era.

DISPLAYS! SLIDE PROGRAMS! SEMINARS!  
SPECIAL GUESTS! DOOR PRIZES!

Information: **Bob & Judy Schmidgall**  
Rt. #1 Box 328  
Arkadelphia, AR 71923  
(501) 246-2720

Free Parking

Public Welcome!

## The DAZE

\*SPECIAL OFFER  
to NCC friends \$2. off  
the 1 year subscription  
price when on this form  
or copy of.

The Original National monthly newspaper dedicated to the buying, selling & collecting of colored glassware and china including Depression Glass and the Elegant Glass (Cambridge, Heisey, Fostoria, etc.) We educate and inform you each month with feature articles by top notch columnists, readers "finds", club happenings, show news and a multitude of ads. Find those missing pieces to your 30s, 40s or 50s pattern. Can't identify it? Perhaps we can help "Keep up with what's happening with a subscription to the DAZE. Buy, sell or trade from the convenience of your easy chair.

Name \_\_\_\_\_ Street \_\_\_\_\_

City \_\_\_\_\_ State \_\_\_\_\_ Zip \_\_\_\_\_

1 yr \$19 2 yrs \$37 \$2. Single Current Copy

Exp date \_\_\_\_\_ Card No. \_\_\_\_\_

Signature \_\_\_\_\_

Orders to D.G.D., Box 57NC, Otisville, MI 48463  
Please allow 30 days for your first issue - Canadian subscribers, add \$1.  
per year and subscribe by charge card only! This Special Offer may not be  
combined with any other special offer.

# DEALERS



# DIRECTORY

NOTE: When writing to the Dealers listed here, please enclose a SASE!

<p><b>SANDY'S ANTIQUE MALL</b> 617 Wheeling Ave. Cambridge, OH 43725 Phone 614/432-2570</p> <p><b>COLLECTOR'S ITEMS</b> Summer 9 - 6 Daily * Winter 9 - 4:30 Mon - Sat</p>	<p><b>BENICIA ANTIQUE SHOP</b> 305 First Street Benicia, California 94510</p> <p><b>OPEN 11 AM - 5 PM</b> Closed Monday</p> <p>Z. E. LOPES 707-745-0978</p>	<p><b>THE MUTED SWAN ANTIQUES</b> 5486 Peachtree Rd. Chamblee, GA 30341 Heart of Chamblee Antique Row</p> <p>Specializing in Cambridge, Heisey and Fostoria Bill &amp; Pat Miller 404-451-7620</p>
<p><b>MILBRA'S MATCHING SERVICE</b> P O Box 363, Rio Vista, TX 76093 Milbra Long 817 / 645-6066</p> <p>FOSTORIA CAMBRIDGE HEISEY DEPRESSION ERA GLASSWARE</p> <p><b>BUY and SELL</b></p>	<p><b>VISIT HISTORIC BENICIA</b> and its 28 shops</p> <p>Off Interstate #80 ..... ..... North of San Francisco</p>	<p>Elegant Depression Era Glassware</p> <p><b>ABBA ANTIQUES</b> 1157 Charlie Lane Lilburn, GA 30247 Bill &amp; Barbara Adt (404) 279-1542 Shows, Mail Order, &amp; by Appointment</p>
<p><b>THE GLASS URN</b> 456 West Main Street, Suite G. Mesa, AZ 85201 602 / 833-2702</p> <p>Mail Order Shows Open Shop <b>CAMBRIDGE, FOSTORIA, HEISEY, ETC.</b></p>	<p><b>ANTIQUES ON THE MALL</b> SPECIALIZING IN CAMBRIDGE GLASS</p> <p>Stagecoach Mall - Bldg. 3 - Norwich, OH Virginia Bennett 614/432-4483 64183 Warne Drive, Cambridge, OH 43725</p>	<p><b>GATEWAY ANTIQUE MALL</b> 21122 - 134th Avenue North Rogers, MN 55174 I-94 &amp; 101 (Exit #207, Turn North)</p> <p>Open 10-6, 7 Days - (612) 428-8286</p> <p>Elaine Stock, Proprietor Diane Overson, Manager</p>
<p><b>ETTELMAN'S DISCONTINUED CHINA &amp; CRYSTAL</b> Cambridge a Specialty</p> <p>P.O. Box 6491-CB Corpus Christi, TX 78466 Phone (512) 888-8391 Include S.A.S.E.</p>	<p><b>D &amp; D ANTIQUES</b> Columbus, Ohio</p> <p>DICK SLIFKO SHOWS ONLY</p>	<p><b>DEER TRAIL ANTIQUES</b> RONI SIONAKIDES (517) 669-5981</p> <p>6565 W. Herbison Rd. DeWitt, MI 48820 Fostoria, Tiffin, Duncan, Cambridge</p>
<p><b>THE GLASS CUPBOARD</b> 39 Shire Oaks Drive Pittsford, New York 14534</p> <p>Marcia Ellis Cambridge, Duncan Miller (716) 586-7596 Shows, Mail Order, Appt.</p>	<p><b>JUDY'S ANTIQUES</b> Judy Bennett 422 S. Ninth Street (Corner of Jefferson) Cambridge, Ohio 43725</p> <p>BUYING Ph. 614-432-5855 SELLING Cambridge Glass my Specialty</p>	<p><b>"HAPPINESS IS" - THE STULTZS</b> 3106 Warren Court Glen Allen, VA 23060</p> <p>SHOWS &amp; MAIL 804-672-8102 (RICHMOND AREA) AMERICAN MADE GLASS CIRCA 1890-1960</p>
<p><b>ELEGANT GLASSWARE</b> Elegant Depression Era Glassware 26 Lavette St. Martinsville, VA 24111 (804) 774-4422</p> <p>Cambridge-Heisey-Duncan-Fostoria</p>	<p><b>GREEN ACRES FARM</b> 2678 Hazelton Etna Rd., Pataskala, OH 43062 (State Route 310 North)</p> <p>Sat. &amp; Sun. 1-7 PM 614/927-1882 Antiques, Crystal Glass and Collectibles</p>	<p><b>CROW'S NEST ANTIQUES</b> Constance Crow Buying &amp; Selling Elegant Depression Era Glassware</p> <p>Austin Antique Mall 8822 McCann Austin, TX 78758 (512) 371-0244</p>
<p><b>THE HITCHING POST</b> 7467 S. R. 88 Ravenna, OH 44266</p> <p>Ph. 216-296-3686 D. McDaniel <b>CAMBRIDGE — HEISEY — GENERAL LINE</b></p>	<p><b>PATCHES OF VIRGINIA</b> Specializing in China and Glass Virginia T. Houston</p> <p>34116 Roberts Rd., Eastlake, OH 44095 Phone: (216) 975-8315</p>	<p><b>CRYSTAL LADY</b> 1817 Vinton St., Omaha, NE 68108 Joann D. Hagerty</p> <p>Bus. (402) 341-0643 Res. (402) 391-6730 Specializing in Elegant Glass &amp; Collectables</p>
<p><b>YOU CAN ADVERTISE YOUR ANTIQUe SHOP HERE!</b></p>	<p><b>REMEMBRANCES</b> 7597 Daphne Dr., No. Syracuse, NY 13212 Shirley S. Ladouceur 315 / 458-5297</p> <p>ANTIQUES and COLLECTIBLES MAIL ORDER SHOWS APPOINTMENTS</p>	<p><b>MARGARET LANE ANTIQUES</b> 2 E. Main St., New Concord, OH 43762 Lynn Welker 614/826-4418</p> <p><b>CAMBRIDGE GLASS MATCHING SERVICE</b> Hours Mon.-Fri. 1-5 PM or by Appointment</p>
<p><b>GLASS RESTORATION</b></p> <p>BRILLIANT CRYSTAL ELEGANT DEPRESSION</p> <p>DON &amp; LYNNE WORMLAND MT. CLEMENS, MICH. (313) 791-9191</p>	<p><b>WATKINS</b> (Fine Quality) <b>CAMBRIDGE GLASS SHOP</b> 1429 Marquand Ave. (Corner of Woodlawn) Cambridge, OH (614) 432-4460 Lana Watkins</p>	<p><b>HELEN &amp; JIM KENNON</b> Heisey, Cambridge, Fostoria, Duncan, Imperial, Fenton, Tiffin P.O. Box 114 Brookville, OH 45309 PH: (513) 833-5406 SHOWS ONLY</p>

# QUARTERLY MEETING & PICNIC

# Saturday, Aug. 3 at the Museum

**Flea Market 10 - Noon    Picnic Lunch Noon - 1pm  
Quarterly Meeting 1pm**

**BRING A COVERED DISH, YOUR TABLE SERVICE, & CHAIRS**



**JULY 1991**

## **NCC Museum of Cambridge Glass**

The museum is located on U.S. Route 40, one-eighth mile east of I-77 near Cambridge. Hours: 10 a.m. to 4 p.m., Wednesday through Saturday; noon to 4 p.m., Sunday (March through October). Phone 614/432-1245.  
**Closed Mondays, Tuesdays, Easter and the Fourth of July.**

National Cambridge Collectors, Inc.  
P. O. Box 416 Cambridge, Ohio 43726

FIRST CLASS MAIL  
U.S. POSTAGE  
**PAID**  
So Vienna, Ohio  
45369  
Permit No. 15

**FIRST CLASS MAIL**

## **Membership Renewal Notice**

This is your **last** issue of the *Crystal Ball*—if the date on your address label reads 7-91.

*Please renew now!*