



Cambridge Crystal Ball

Published monthly by the National Cambridge Collectors, Inc.
to encourage and report the discovery of the elegant and boundless product
of the Cambridge Glass Company of Cambridge, Ohio

Issue No. 223

November 1991

Glass Collectors Lose Good Friend William C. "Bill" Smith



BILL SMITH

William C. "Bill" Smith, 63, of Springfield, Ohio, died unexpectedly Thursday, September 19, 1991, in his residence. He was born April 6, 1928 in Pleasant City, Guernsey County, Ohio, the son of Edward A. and Myrl V. (Cater) Smith.

He was a member of Central Christian Church and a veteran of the U.S. Navy, serving during the Korean Conflict. He was a retired assistant manager for Ohio Bell with thirty years of service. During his employment he was involved with Western Electric and helped implement the D.E.W. (Distant Early Warning) and the B.M.E.W.S.

(Ballistic Missile Early Warning System) for the Government. He was active in all phases of Scouting, including Cub, Boy and the Town & Country program for physically and mentally handicapped young men. He received the distinguished Silver Beaver Award in 1966. He was also a member of St. Andrew's Lodge #699 F. & A.M.

For the past eighteen years Bill has been an active member of the National Cambridge Collectors. During those years he donated generously his talent, money, and literally thousands of volunteer hours of his time. Joining in early 1973, he was member #66. He was elected to the N.C.C. Board of Directors in 1974 and served continually until his death. He was elected vice-president in 1974; president 1975 thru 1980; and treasurer from 1980 thru June 1991. During those years he also served on most, if not all, committees. He was a member of the first Cambridge Study Club, the "Hokey-Pokey's," and more recently the Miami Valley Ohio Study Group #13. He traveled hundreds of miles each year, attending glass shows, as guest, giving talks, selling books, memberships, etc., promoting N.C.C. in every possible way. He was considered an authority of Cambridge glass, and was also very knowledgeable in all types of collectable glassware. Bill also

continued on page 3

Cambridge Crystal Ball

Official publication of National Cambridge Collectors, Inc., a non-profit corporation with tax exempt status. Published once a month for the benefit of its members.

Membership is available for individual members at \$15 per year and additional members (12 years of age and residing in household) at \$3 each. All members have voting rights, but only one *Crystal Ball* will be mailed per household.

Back issues of the *Crystal Ball* are available (beginning with Issue No. 1, May 1973) for members only. Cost: \$1.00 each or 12 issues for \$10.00.

1991-92 Officers & Committee Chairpersons

President	Joy R. McFadden
Vice-President	Marybelle Moorehead
Secretary	David B. Rankin
Treasurer	R. Clarke West
Sergeant-at-Arms	Judy Momirov
Acquisition	
Budget & Finance	David B. Rankin
By-Laws	Marybelle Moorehead
Convention Facilities	J. D. Hanes & Judy Momirov
Membership	Phyllis D. Smith
Museum—Facilities	Doyle Hanes
Museum—Interior	J. D. Hanes
Non-Glass Items	J. D. Hanes
Nominating	Mark A. Nye
Program	Cynthia A. Arent
Project	R. Clarke West
Publications	Mark A. Nye
Public Relations	Bill & Phyllis Smith
Publicity	Cynthia A. Arent
Study Group Advisor	Judy Momirov
1992 Auction	Lynn M. Welker
1992 Antique Show	Mary Beth Hackett
1992 Convention	Marybelle Moorehead
1992 Flea Market	Marlene & Harold Snyder
Crystal Ball Editor	Phyllis D. Smith

Classified Advertising Rates

10 cents per word \$2.00 minimum
 We cannot mix type size in classified advertisements. Abbreviations and initials will count as words. Payment in full **must** accompany all ads.

Display Advertising Rates

(Camera-ready ads preferred)	Members	Non-Members
1/8 page	\$ 6.00	\$10.00
1/4 page	10.00	15.00
1/2 page	18.00	25.00
3/4 page	25.00	35.00
Full page	33.00	45.00

Dealers Directory

Five-line maximum \$18.00 for 12 months

Cambridge *Crystal Ball* assumes no responsibility for items advertised and will not be responsible for errors in price, description or other information.

Advertising copy, articles, club news and notices must be in our hands by the 10th of each month to assure publication in our next issue.

Paid advertisements containing reproductions or new glass will not knowingly be accepted for publication.

Opinions or information stated in any signed article or letter printed in the *Crystal Ball* are those of the authors and may or may not agree with National Cambridge Collectors, Inc. The Editor reserves the right to refuse and to edit any material submitted for publication so as to conform with the editorial style of the *Crystal Ball*.

Please Address All Correspondence to:

National Cambridge Collectors, Inc.
 P.O. Box 416 Cambridge, Ohio 43725

President — Joy R. McFadden, 614/885-2726

Secretary — David B. Rankin, 513/833-1626

Editor — Phyllis Smith, 513/323-3888

N.C.C. Museum — 614/432-1245

Please notify us immediately of any change in your address.

Please enclose an SASE when requesting information.

CAMBRIDGE GLASS BOOKS FOR SALE

By National Cambridge Collectors, Inc.

- **Colors in Cambridge Glass***
 128 pages, 60 color plates, fully indexed
 Hardbound with price guide \$19.95
 - **1930-34 Cambridge Glass Company Catalog Reprint***
 250-page reprint of original catalog
 Paperback with price guide \$14.95
 - **1949-53 Cambridge Glass Company Catalog Reprint***
 300-page reprint of original catalog
 Paperback with price guide \$14.95
 - **1956-58 Cambridge Glass Company Catalog Reprint***
 164-page reprint of original catalog
 Paperback \$6.95
- *For NCC members only, the above publications are available at a 10 percent discount.

By Bill and Phyllis Smith

- **Cambridge Glass 1927-1929**
 66-page reprint of original catalog
 Paperback w/identification guide \$7.95

By Cambridge Buffs Study Group

- **Nearcut**
 108-page reprint of 1910 Cambridge catalog
 Paperback with price guide \$9.95

By Mark A. Nye

- **Cambridge Rose Point**
 94 pages, fully indexed
 Paperback with value guide \$12.95

By Mary, Lyle and Lynn Welker

- **Cambridge Glass Company**
 120 pages of reprints from eight old catalogs
 Paperback \$10.00
- **Cambridge, Ohio Glass in Color II**
 Spiralbound \$5.95

By Harold and Judy Bennett

- **1903 Cambridge Glass Company Catalog Reprint**
 106-page reprint of an original catalog
 Paperback \$7.50

Address your orders to:

Books
 National Cambridge Collectors, Inc.
 P.O. Box 416
 Cambridge, OH 43725

Please add postage and handling to your order (first book, \$2.00; each additional book, 50 cents). Ohio residents add 6 percent state sales tax.

Dealer discounts available—please write!

BILL SMITH continued from page 1
held memberships in most of the other glass collector clubs; serving a two year term as a member of the N.D.G.A. Board of Directors.

Survivors include his wife, Phyllis (Damsel), whom he married on December 30, 1951. (Phyllis is CRYSTAL BALL Editor and N.C.C. membership chairman.) Two sons, Edward W. and his wife Becky Smith, and Mark A. Smith. Two grandchildren, Nicholas W. and Samantha B. Smith, all of Springfield. His mother and step-father, Myrl and Richard Hill of Cambridge, Ohio, a brother and his wife, Henry W. and Rose Smith of Bloomington, Indiana. A step-brother and his wife, William and Janice Hill of Barnesville, Ohio, and a step-sister and her husband, Marjorie and Roger Seaton of Cambridge. He was preceded in death by his father, Edward in December of 1954.

Both he and his father were employees of the Cambridge Glass Company. Bill arranged for, and served as host of, the "Former Cambridge Worker's Reunion" held each year, beginning in 1985, during the N.C.C. Convention.

Services were held Monday, September 23rd in the Woods-Allgier Funeral Home and interment followed in Rose Hill Burial Park, Springfield.

If desired, memorial contributions are requested to the National Cambridge Collectors.

THANK YOU

Dear N.C.C. Friends,

It will never be possible for us, the family of Bill Smith, to fully express our appreciation to all of you, for the love and concern that you have lavished upon us during this past month. As we have grieved the passing of our loving husband, father, grandfather, son, brother, and most of all, best friend, so many of you have been by our side, helping us through this most difficult of times. There just are no words that can adequately express our appreciation for all your expressions of sympathy.

We can only say, thank you, for your prayers, your flowers, your love and concern, your visits, your cards and notes, and your many donations to N.C.C. in "Memory of Bill."

It has been very comforting to realize that so many of you felt such a warm friendship and admiration for this man that we, his family,

loved so dearly. He touched many lives in many different ways, and yet, we all share memories that bring us close together.

Each in our own way, we will miss him.
With most sincere thanks from
Bill Smith's Family
Phyllis and Mark
Ed, Becky, Nicholas and Samantha
and other family members

President's Message

I have been a member of N.C.C. for 18 years and with the passing of time comes the realization that each year we must say goodbye to some of our members.

This past month we grieved the passing of Bill Smith, Board member and former treasurer of N.C.C. Bill and his wife Phyllis joined N.C.C. shortly after the club was founded in 1973. Bill was an active member almost from the beginning. He served as president, treasurer, public relations representative, show chairman, etc. He served on most, if not all, committees at one time or another, including Color Book, Acquisitions, Budget and Finance, Membership, Nominating, Program, and Projects. He assisted at auctions, mini-auctions, museum clean-up, and cleaning the etching plates. In the past few years, Bill organized the Old Timers Reunion each year during Convention.

Together, Bill and Phyllis published a reprint of an original 1927-1929 catalog, and Bill worked with Phyllis each month as she put together the CRYSTAL BALL.

While talking with others during visitation at the funeral home, someone made a comment about Bill's involvement in so many phases of club activities. Since that time I have had several questions come to mind about the club, and each time I realize that Bill Smith would know the answer to that question. Bill Smith was a valuable and devoted member of N.C.C. and he will be sorely missed.

The Board of Directors would like to express appreciation to those who sent donations to N.C.C. in memory of Bill.

The Board is continuing to work on Convention plans for 1992 and hope to have some information available by the November Quarterly meeting.

Museum Moments

by J. D. HANES

MUSEUM CLOSING FOR SEASON
on Thursday, October 31, 1991.
Will reopen March 1, 1992.

As you will be reading this, the Museum will be closed for the Season! I am going to do away with my usual column and do a personal remembrance of my friend Bill Smith.

By now, as you have read elsewhere in this issue of the CRYSTAL BALL, we were in a state of mourning, shock and loss here with the untimely passing of Bill. I am not sure as to what I can add to the sentiments expressed by others who knew Bill for many more years than I did. He had been in Cambridge many times this year and we spent a lot of time talking about our favorite subject -- GLASS!

At times like these, you get to do some reflecting on the past. I remember the first Quarterly meeting that I attended as a new member of the club. It was one for the Auction Preview. I was unsure as to what to expect from this group. The thing that has really stuck in my mind through the years is three people I did not know, who introduced themselves and made me feel welcome. The first was Phyllis Smith, who was sitting at the table inside the door. Bill Smith then came up and introduced himself. And last, I was welcomed by Willard Kolb. After the meeting, driving home, I remember thinking, "WOW! What a great group! I had the Editor of the newsletter, the Treasurer, and the President of the club, welcome me personally."

From then, I was even more hooked on Cambridge glass and was very enthusiastic of the club. That enthusiasm must have shown, because in a couple of years, the nominating committee, chaired by Bill, approached me about running for election to the Board of Directors. I asked why would they want me? Bill told me that they would like to have people with ideas and who would speak honestly about subjects. I was then elected to the Board and got to know Bill even better.

To say that we always agreed on topics would not be true. However, we could discuss things on a friendly basis and I could always see his point of view and sometimes would alter mine. We never let disagreements get personal or linger on.

When I was hired to be the corresponding secretary, I spent a lot of time on the phone with the Smiths. We would start out on club business and end up on glass finds that we would talk for a long time about. I have never turned in a phone bill to the club, since most of the calls I made ended up in personal "chit-chat." However, my phone bills will testify about some of the conversations that Bill and I could have on glass. Sometimes Phyllis would hang up on the extension, so she could get back to her work on membership or the CRYSTAL BALL, and let us talk.

Bill and I also attended some of the meetings of the National Glass Clubs together. He really enjoyed those meetings, it seemed, and so did I. This gave us more of a chance to talk glass and other things.

One of the things that I think gave Bill great pleasure in the last few years was being the chairman of the "Former Workers Reunion" during the convention. His face would be beaming on those Sunday afternoons at the Museum. He really made all of those people feel welcome to this event. Whoever takes over this event next year, will have some very big shoes to fill.

In closing, let me say that I, as many of you, will miss Bill for his knowledge of this wonderful glass that we collect. However, we can also be thankful that we did know him, and did learn from his research.

Also, we can take comfort in knowing that Bill is in a better place and that right now he is probably holding a "Former Workers Reunion" in heaven, with A. J. Bennett as the honored guest.

Goodbye Bill, and may God Bless!

"A Memory Is a Special Treasure"
by Amanda Bradley

Though time may pass, a memory stays,
Reminding us of happy days,
and of the people
who have touched our lives --
Of favors done, and love expressed,
Of those who've stood above the rest,
A memory is a treasure that survives.

WORKER OF THE MONTH

IN MEMORIAM

WILLIAM C. "BILL" SMITH
1928 - 1991

by The Cambridge Cordials Study Group

We would like to take this opportunity to pay tribute to Bill, a former worker during the 1940s, and to express our appreciation for the encouragement and guidance which he provided to the Cordials from our groups beginning. Bill was always eager and willing to share his knowledge of glass with others. He was also our "Worker of the Month" in the September 1990 issue of the CRYSTAL BALL, providing us with one of the last views of the interior of the Cambridge Glass factory, describing the factory as it once was.

He attended several of the Cordial's study group meetings, sharing information and contributing to the general conversation, helping to make the meetings successful. During one meeting Bill provided samples of the transfer paper and the "rub down" cloth which was helpful in our interview with the workers from the Etching Department. Bill provided the Cordials with a list of former workers as a resource to aid the "Worker of the Month" project. He also conducted "Show & Tell" at one of the meetings which he attended. We were appreciative of his being in attendance, and of his knowledge due to the many rare and one-of-a-kind items that were brought by the former workers. (see picture below)

We will all miss Bill, but we can also feel fortunate that we knew and learned from him.

Cindy Arent Mike Arent Rich Bennett Sally Bennett

Carl Beynon Shirley Beynon Doyle Hanes

J.D. Hanes Judy Momirov Mary Martha Mitchell

Jeff Ross Kevin Weinman Lorraine Weinman



Mark, Phyllis and Bill Smith during a Cordials meeting.

EPERGNES & EPERGNETTES

PART II

by MARK A. NYE

The Cambridge Glass Co. used the term epergne to describe a combination consisting of any candlestick to which a detachable arm that held vases had been added. The arm consisted of a vase holding ring at either end and in the center either a candle pocket or a decorative knob, depending upon the arm model, and was produced in three sizes. The vases used with these arms lacked a foot and thus, could not stand by themselves. The vases were made in two styles, with and without a small knob at the bottom. The patent application for the combined flower vase holder and candlestick was printed in the October 1991 issue, as part I of this series dealing with epergnes and epergnettes.

The term epergnette was used by Cambridge to designate those items that served as both candle and flower holders and did not make use of a detachable arm or special vase. The 1940 Cambridge catalog offered five epergnettes and all used as their base the #1588 2-lite candlestick. Added to this base were three styles of vases, the #93 6" footed vase, the #1579 4½" ball vase, and the #78 4½" crimped top vase; the latter similar in shape to a hurricane shade.

Jess Clair Kelly of the Cambridge Glass Co. filed a design patent application for a "combined candlestick and centerpiece or similar article" on July 30, 1937 and it was granted a month later. The item for which the design patent was obtained is the #1588 two-light candlestick and shown with this article is the patent announcement as it appeared in the September 7, 1937 issue of the U.S. Patent Office Official Gazette.

With the exception of the #1579 ball shaped vase which was also produced in carmen, neither the #1588 candleholder, or the vases added to it, were made in color. Available from the January 1940 price list was the #1580 Epergnette with either a crystal or carmen vase, the latter priced at \$3 more a dozen than those with a crystal vase. The #1591, #1583 and #1580 with crystal vase listed at \$30 per dozen (approximately 52 years ago) while the #1589 and #1588 with their #23 bobèches and 10 #5 prisms were quite expensive at \$82.50 per dozen.

Epergnettes probably came on the market as soon as the patent application was filed and were discontinued during the 1940s as non appear in the 1949 or later catalogs and price lists.

Exactly when the first Cambridge epergnes were placed on the market has not been learned, however, trade advertising promoting epergnes and dating to 1935 has been found. More than likely, the first epergnes were shown to the trade either as soon as the patent application was filed or after it was granted in the fall of 1934. Epergnes, although fewer in number than in the 1940s, were shown in the final Cambridge catalog.

There were two styles of vase arms used for epergnes; one having a candle holder in the center and one with a knob in the center. There were three arms with a center candle holder, these being the #1436, #1437 and #1438, used to assemble the epergnes shown in the 1940 catalog and single one with a center knob, the #1435. At one time there were two additional arms with the center knob, one of which had a different style knob. The only distinguishing difference between the three with the candle holder in the center is their size and the dimensions of each are provided below;

Arm	Arm Width	Inside Ring Diameter
#1436	7¾"	1"
#1437	9"	1-1/8"
#1438	10½"	1½"

The overall width may vary slightly, perhaps as much as a 1/4", but this does not indicate a different size. This minor variation in width as the result of the arm sagging after it was removed from the mold.

The #1435 arm with center knob is the same size as the #1438, that is approximately 10½" wide. The other two arms with center knobs will correspond in size to the #1436 and #1437.

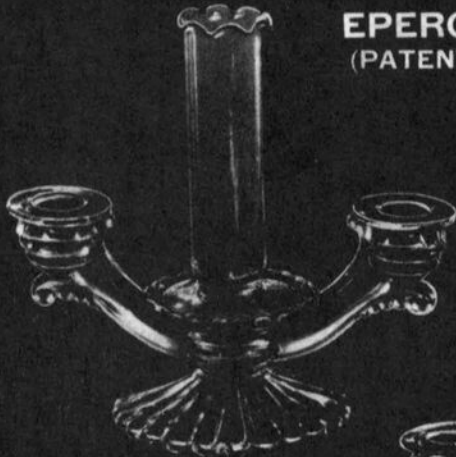
The #1358/8 epergne utilizes the #1438 arm,
continued on page 10



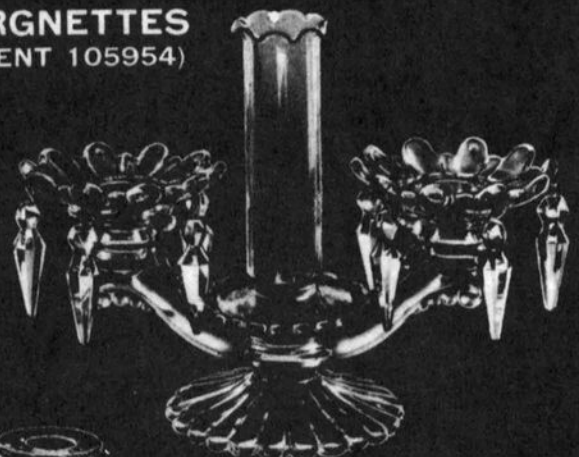
The Cambridge Glass Company



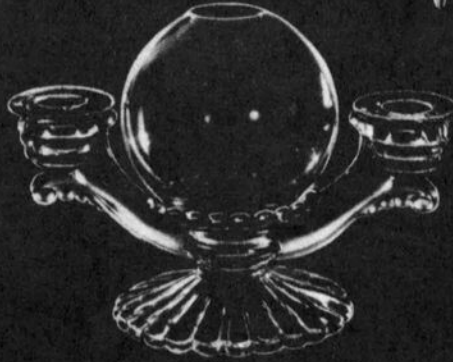
EPERGNES and EPERGNETTES (PATENT 1977816) (PATENT 105954)



1591 Epergnette
w No. 93 Ftd. Crimped Top Vase



1589 Epergnette
w Bobeche & Prism w No. 93 Vase



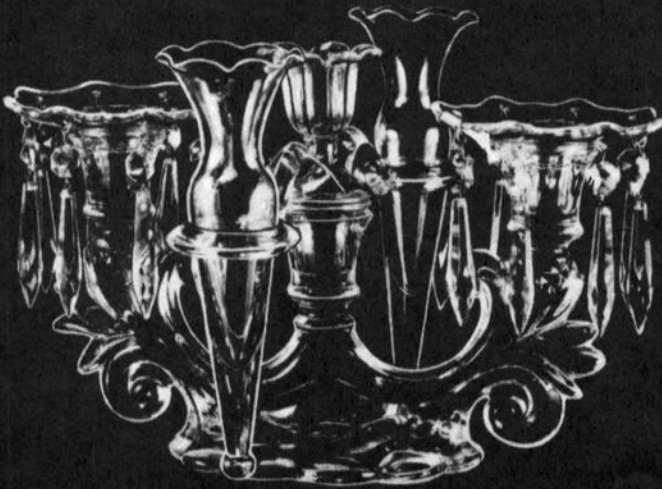
1580 Epergnette
w 1579 Ball Shape Vase



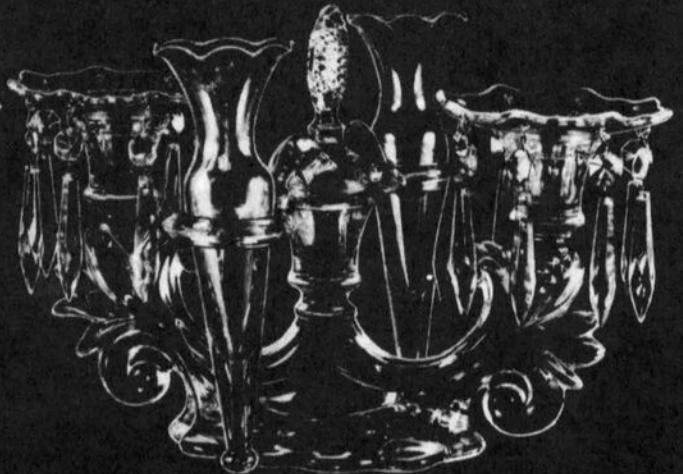
1588 Epergnette w Bobeche & Prisms w No. 78 Vase



1583 Epergnette
Crimped Top Vase



1358 B Epergne



1358 5 Epergne

JANUARY 1, 1940



The Cambridge Glass Company



EPERGNES and EPERGNETTES (PATENT 19778 16) (PATENT 105954)



639 Epergne



1441/8 Epergne



645 Epergne



1478 Epergne



654 Epergne



1357 Epergne



Caprice 75 Epergne



Caprice 76 Epergne

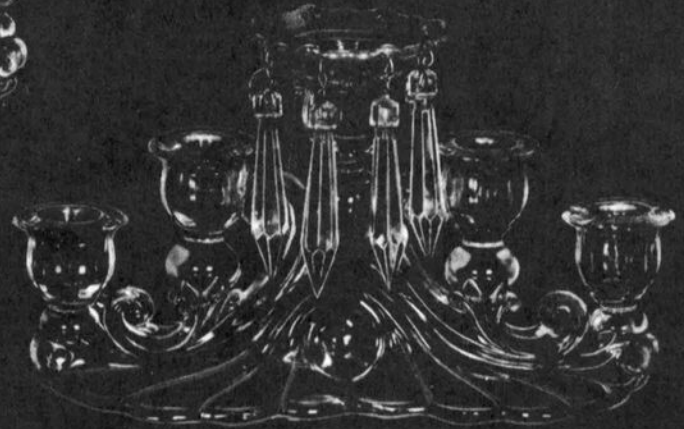
Cambridge, Ohio - - - U. S. A.



Candelabra and Epergnes



1577-5 Lite Candlestick
Height 6 in.
Length 11 in.



1564-5 Lite Candelabra
(28 Bobeche - 8 No. 10 Prisms)



1566 Epergne
(28 Bobeche - 8 No. 10 Prisms -
Arm & 2 Vases)



1565 Epergne

EPERGNES continued from page 6

#19 bobeches and #1 1½" prism. It remained in the Cambridge line until the final closing; however, in later years was known simply as the #1358. The arm used for the #1358/5 is the #1435; this item had been discontinued by 1949.

The #639 made use of the #1436 arm and the #639 single-lite candlestick. The epergne was not offered after the mid-1940s and of the three arms with center candle holders, the #1436 is the most difficult to find.

The two Caprice epergnes, #75 and #76, shown in the accompanying illustrations (see page 8), are comprised of the Caprice #74 3-lite candleholder, the #1437 arm, and in the case of the #76 epergne, a #21 bobèche (square in shape) and #5 prisms. Neither of these epergnes remained in the Cambridge line when the June 1949 catalog was issued.

Epergne #1357 is identical to the #1358/8 (aka #1358) except for the absence of bobèches and prisms. It did remain a part of the Cambridge line throughout the final years.

Both #645 and #663 (not illustrated) epergnes use as their base the #1037 3-lite candleholder and added to it, in both cases, is the #1438 arm. The #645 differs from the #663 in that it also has a #19 bobèche and 8 prisms, something that the #663 does not have. These two items also made it into the final Cambridge catalog.

The #654 comes from the familiar #646 single lite candlestick and uses the #1438 arm, #19 bobèche and #1 prisms. While the candlestick itself is shown in the 1949 catalog, as is a candelabrum based on it, the epergne was no longer listed.

The #1441/8 and #1478 each use two #1438 arms, 4 vases, 2 #19 bobèches and 16 #1 prisms on their respective base candleholders. Neither of these were available in 1949 or later years.

The five-lite Caprice candleholder was also used as the basis for several epergnes, two of which are the #1566 and #1565. Both of these use the #1438 arm in the middle or highest candleholder and differ only by the bobèche and 8 #10 prisms present in the case of #1566.

At this time, no item numbers have been

found for the various vases used for the Cambridge epergnes. Obviously, there are three sizes to fit the three ring diameters, as well as those with and without the terminal knob. Hopefully additional research will provide item numbers for the vases.

It is with heavy heart that this month's article is dedicated to the memory of a dear friend, and the source of much of my knowledge about Cambridge glass, Bill Smith. To those who knew Bill, our loss is well understood; however, we were fortunate in that our lives were touched by him. Those who had never met him will now never have that opportunity, and that, is their loss.

Study Club News

STUDY GROUP #7 - EASTERN OHIO
"THE CAMBRIDGE BUFFS"
Phone: 416/432-5230

The Cambridge Buffs Study Group held their meeting on September 22nd in the home of Charles and Mary Alice Upton. There were 11 members and one guest present.

Charles Upton reported on how many Near Cut price guides were sold. Rich Bennett showed different pieces and colors of glassware that he collected. We studied the Etching books Bill Smith had assembled from prints of the cleaned Cambridge etching plates that were obtained from the old Imperial liquidation.

"Show & Tell" included: a shot glass etched Rosepoint; amethyst vase E/Lily of the Valley; ivory Dolphin candlesticks; tomato plate; royal blue Japonica vase; Rams Head rubina bowl; rubina candlestick; milk glass open salt, shell and tray; Inverted Strawberry carnival butter dish; carmen sandwich plate; and a teapot made by Guernsey cooking ware.

Next meeting will be held at the Museum.
submitted by Deanne Gray

STUDY GROUP #13 - SOUTH WEST OHIO
"MIAMI VALLEY, OHIO"

The Miami Valley (Ohio) Study Group held

continued on page 12

CAMBRIDGE *by Imperial*

ITEMS SEEN AT AUCTION

by J. D. Hanes

On Friday and Saturday, September 6 & 7, I attended an auction held in Moundsville, West Virginia. It was an estate auction of a man who had worked for the Imperial Glass Company for many years. I only attended the Friday part of the auction, since their catalog indicated that was the day most of the "Cambridge by Imperial" items were to be sold. The turnout was not very good, but I did see and talk with a few members of N.C.C., as well as members of the Imperial Club.

Many of the items from Cambridge molds were obviously Imperial in origin, due to their colors. Most did not have the Imperial mark, but many did have original Imperial or Cambridge by Imperial labels. Some of the items that were sold that day, are listed below.

Pristine #737, canoe ashtray in verde and amber.
1956/5 8" hambone ashtray in orange slag.
Caprice #131, 8" low footed plate in moonlight blue.
Cambridge Square #165 candy box & cover in crystal.
Cambridge Square #150 6½" ashtray in carmen, (Imperial called it Ruby).
#3011 Nude stem comport with moonlight blue bowl, crystal stem and foot.
#1042 6½" swan in crystal and crystal frosted.
#1043 8½" swan in crystal and crystal frosted.
#1663, the 4-lite arm for the Cambridge Arms, in crystal.
#3121 parfait in crystal, etched Rosepoint.
A56 Today wine, antique blue stem, crystal bowl.
A56 Today cordial, amber stem, crystal bowl.

Some of the Imperial colors that were seen, are very similar to Cambridge colors. Orange slag, caramel slag and verde green are definitely Imperial colors. The confusing colors were moonlight blue, carmen (ruby), amber, antique blue, and of course, crystal. Imperial's antique blue can look a lot like Cambridge's tahoe blue, especially in the A56 Today stem line.

Some of these items were bought by myself, a "St. Clairsville Collector," and an "Imperial Lady." Most of the items went for a reasonable price. However, some of the items that would be very confusing to some collectors, sold for the same or higher prices that we would pay for original Cambridge. It makes me wonder if some of these will be sold on the market as originals.

All in all, it was an enjoyable day. I hope that this will be of help to all collectors.

#####

STUDY CLUB NEWS.....continued from page 10

their meeting September 10th at the Huber Heights Public Library. There were 13 members present.

There was a discussion regarding the Etching book which we are planning, which was approved by the N.C.C. Board in the spring. This promises to be a long and time consuming project, but it is felt that the finished book will be well worth the time involved.

Our program for the meeting was "Summer Finds" and the following items were discussed: crystal Caprice w/gold 50th Anniversary decoration and Silver City Glass Co. label, marked 22K gold on crystal; yellow flashed Dolphin candlestick with Stratford base and gold band decoration; #3600 Martha crystal artichoke plate; crystal LaTourrine ftd. fruit bowl; crystal Pristine 5-part relish engraved Harvest; carmen Martha Washington cup; windsor blue Seashell vase; sunset ranch juices; and a crystal side salad E/Rosepoint.

A light emerald Turkey; royal blue Caprice vase; crystal LaTourrine basket; crystal apothecary box w/foil label; crystal Strawberry child's berry; light emerald Strawberry cream & sugar; crystal Pouter Pigeon book-end; crystal Gadroon covered urn E/Portia; ebony Community match box holder w/gold trim; crystal blown pulled stem cordial E/Wedgewood; crystal Clock candy container; crystal Guernsey sugar w/ruby flash and gold; forest green Tally-Ho cocktail shaker; crystal 8" vase #2366 E/Classic; crystal crushed fruit jar, signed Near Cut; peachblo footed parfait E/#703 gold encrusted; crystal Pristine #500 candlestick and crystal #1066 goblet E/Elaine.

Crystal #1066 goblet RC engraved #628; crystal Martha pickle dish; crystal Pristine RC engraved #936 Grecian; crystal #3650 3½ oz. cocktail Decorate #1059, gold encrusted E/Blossomtime; amber #1161 relish dish, signed; amber topped Mt. Vernon comport w/crystal stem and foot; amber Mt. Vernon 2½ oz. juice; crystal Pristine #207 8" 3-part relish; crystal birds #2 & #3 (?); crystal Radium wine; crystal #7966 Rondo cordial; pink cordial/favor vase; and moonlight blue 3" Star candlestick.

submitted by Susan Rankin

STUDY GROUP #14 - CAMBRIDGE, OHIO
"THE CAMBRIDGE CORDIALS"
Contact person - Judy Momirov
Phone: 614/432-2896

The Cambridge Cordials met on Saturday, September 28th, at the mold storage building on the N.C.C. Museum grounds. There were seven members in attendance.

Our main topic was to set meeting dates for the coming year. Our October meeting will be held on October 19th at the home of Judy Momirov. The November meeting will be held on November 16th at the home of Kevin and Lorraine Weinman. Our Christmas party meeting will be held on December 21st at the home of Carl and Shirley Beynon. We will list other dates in next month's article.

After deciding on meeting dates we held a picnic/cookout.

submitted by J.D. Hanes

AN EXPRESSION OF SYMPATHY

DONALD E. WILDER
Baton Rouge, Louisiana

Word has been received that N.C.C. member Donald E. Wilder passed away quite suddenly, at his home in Baton Rouge, Louisiana, on March 25, 1991.

We were sorry to receive this sad news from his sister, Susan E. Wilder of Mer Rouge, Louisiana. Susan wrote us of the many weekend visits with her brother that were spent discussing Donald's collection of Cambridge glass.

Our sincere sympathy is hereby extended to Susan, other family members and friends.

"May memories of joy and happiness shared sustain and comfort you."



With all best wishes to all of you for
A VERY HAPPY THANKSGIVING

Stemware, Flat Foot, Band No. 3.

177

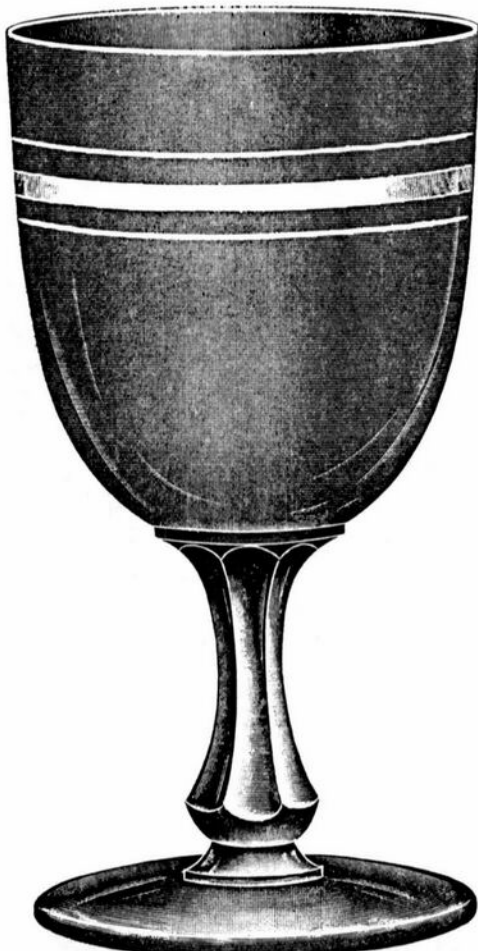
SCALE, FULL SIZE.



No. 666 Wine, Band No. 3.
Packed 40 dozen in a barrel.



No. 667 Wine, Band No. 3.
Packed 40 dozen in a barrel.



No. 666 Goblet, Band No. 3.
Packed 10 dozen in a barrel.



No. 667 Goblet, Band No. 3.
Packed 10 dozen in a barrel.

No. 665 LINE STEAMWARE, CUP FOOT, Band No. 3.

SCALE, FULL SIZE.



2 ounce Wine.
Packed 40 dozen in a barrel.



3 1/4 ounce Claret.
Packed 25 dozen in a barrel.



5 1/4 ounce Champagne.
Packed 18 dozen in a barrel.



11 ounce Goblet, Heavy, Mixing.
Packed 9 dozen in a barrel.



9 ounce Goblet, Light.
Packed 10 dozen in a barrel.

ROBERT W. RILEY

P. O. BOX 4180
 SPRINGFIELD, MA 01101
 Phone: 413/737-0884
 Call 8 pm - 12 midnight EST

P & I Extra
 Will Ship in Time for Christmas

CRYSTAL

#3126 5½" tall blown comport etched Rosepoint.....	\$ 65
#7801 1½ oz. sherry (4), set....	\$ 25
#14 Everglade tulip bowl.....	\$ 50
#663 epergnes w/vases, pair.....	\$ 125
#1327 1 oz. cordial E/Chantilly..	\$ 30
Arcadia 7" bowls (4), set.....	\$ 50
#1070 36 oz. Pinch decanter.....	\$ 25
#278 11" ftd. vase E/Magnolia...\$	60
Pristine #575 9" cornucopia E/Blossom Time.....	\$ 100
#1009 Everglade 6" vase.....	\$ 40

AMBER

Honeycomb 7" tall comport.....	\$ 25
#3400/154 76 oz. Doulton pitcher w/10 #3400/1070 pinched tumblers, set.....	\$ 250
#11 Mt. Vernon 7½" comport.....	\$ 35
Mt. Vernon 3 oz. tumbler.....	\$ 15
#4 Heirloom 9" bowl.....	\$ 30
#1307 3-lite candelabra D/999...\$	30

MISCELLANEOUS

Lt. emerald Wetherford #77 5" comport.....	\$ 18
Lt. emerald Rose Lady.....	\$ 150
Willow blue #1070 28 oz. Aero Optic pinch decanter (no stopper).\$	70
Ritz blue #1070 Decagon cream & sugar.....	\$ 45
Pink #1066 6 oz. cafe parfait (bubble on lip).....	\$ 25
Gold krystal #1401 Jefferson, 6 oz. tall sherbets (6) set.\$	70
Gold krystal 2½ oz. Georgian tumblers (4) each.....	\$ 12
Mandarin gold #3500/69 6½" 3-compartment relish.....	\$ 20
Forest green #3126 5½" tall blown comport.....	\$ 40
Forest green #3500/41 10" covered urn.....	\$ 50
Forest green Mt. Vernon 3 oz. tumblers (2) each.....	\$ 15
Emerald green #1401 Jefferson 6 oz. tall sherbets (6) set.\$	70
Yardley Jar w/plastic lid.....	\$ 30

Aladdin

ELECTRIC LAMPS, 1930-1956

ALADEX • VELVEX • OPALIQUE • ALACITE

Deluxe Hardbound - Color - 229 pages

\$24.95 ppd. - Add \$3 for first class

Order your Book from the Author:

J.W. COURTER

R-1 • Simpson, IL 62985

DATES TO REMEMBER

N.C.C. MUSEUM TO BE CLOSED
 for the winter season
 October 31, 1991 thru February 29, 1992

FEBRUARY QUARTERLY MEETING
 Friday, February 28, 1992

1992 ALL-CAMBRIDGE GLASS AUCTION
 Saturday, February 29, 1992

N.C.C. ANNUAL CONVENTION
 June 25 - 28, 1992

Additional information on all of the above listed events will be included in future issues of the CRYSTAL BALL. But get these dates on your calendar NOW!!

1906 CATALOG

The previous two pages (13 & 14) are reprinted here from the 1906 Cambridge Glass Company catalog. We have been reprinting this catalog, as space permits, for quite sometime. We will list the issue numbers containing catalog pages from this book, when we have completed the entire catalog, so that you may order any back issues you may have missed.

When completed, this should make a nice addition to the library of our members.



N.C.C. CHRISTMAS SHOPPING SUGGESTIONS



For a Merry Cambridge Christmas, there are many items available from N.C.C. to make any Cambridge collector happy on Christmas morning. Be sure to place your order early and we will do our best to make sure everything arrives in plenty of time for Christmas giving.

Ohio residents add 6% State Sales Tax. Send your order, along with check or money order to cover same, to:

National Cambridge Collectors, Inc.
P. O. Box 416
Cambridge, OH 43725

MEMBERSHIP in N.C.C. is always a welcome gift and it keeps giving all year long. We will send a Christmas card signed as you request, along with membership card(s), and all information, to the person of your choice. Please send all needed information to reach us no later than December 5th. Individual Membership \$15 - Associates (at least 12 years of age and living in the same house) \$3. each.

BOOKS are always a welcome gift - especially so if you collect Cambridge Glass. For a list of all available Cambridge books, please see our Book ad on page 2 this issue. Please follow instructions in the ad concerning sales tax and P&I. **Updated (1990) Price Guides** are now available to **NCC MEMBERS ONLY** for the 1930-34 & 1949-53 Reprints at \$3.00 each; and the NCC Color Book at \$2. These prices include P&H.

CRYSTAL BALL BACK ISSUES make a nice addition to any Cambridge collectors' library. We have all back issues beginning with Issue #1 and continuing thru the current issue. Cost is \$10 for 12 issues and \$1 each for quantities less than 12. Write for information on issues concerning a particular pattern, etc.

CRYSTAL BALL BINDERS - top quality, clear vinyl covered, 1½", 3-ring, loose leaf, holds approximately 20-24 issues. \$6 plus \$1 P&H.

BOOKENDS - Scotty, black frosted (3rd in the Museum Reissue Series); Eagle, cobalt blue

(4th of the Museum Reissue Series). A few left at \$30.00 each (your choice), plus \$3 P&I.

CUP PLATES - with bulldog replica and NCC name - crystal, amethyst and teal (limited numbers of each) \$7 plus \$1 P&I.

CONVENTION FAVORS - add \$1.50 each P&I. Paperweight w/NCC logo and date - gold krystal (1982) \$14 each. Windsor blue (1980) \$16.

Georgian Tumbler, 2½ oz. w/NCC logo and date - amber (1985); gold krystal (1986) \$14 each; marked N.C.C. no date - pink (1984) \$12; marked "10th Anniversary 1973 N.C.C. 1983" cobalt blue (1983) \$18.

Nearcut Marjorie Punch Cup, light blue, marked "N.C.C. Convention 1987" in gold \$16. Cambridge Square Cigarette Holder, cobalt blue, marked "N.C.C. Convention 1988" in gold \$20.

Mt. Vernon Cordial, teal blue, marked "N.C.C. Convention 1989" in gold \$20.

Mt. Vernon Cordial pink, marked "N.C.C. Convention 1990" in gold \$15.

PAMPHLETS - reprints of original Cambridge booklet, pamphlets and leaflets - priced each, includes P&I.

Booklet "Cambridge Arms" \$2.

Pamphlet "Blossom Time," "Rose Point," "Chantilly," "Cambridge Square," "Martha" \$1.

Leaflet "Rondo," "Star," "Laurel Wreath," "Roxbury," "Lynbrook" 50¢.

MARBLE (new 1988) milk glass, marked "The Cambridge Glass Co., Est. 1901" \$5 each.

T-SHIRT orange w/N.C.C. logo in black \$5 each (write for available sizes).

VCR TAPE - "The Crystal Lady." Movie of factory and workers, made from old 16mm film - 20 minutes. \$15 each, plus \$2 P&I.

NEW BOOK - "National Trail & Old Forty in Verse & Pictures." by Paul E. White. 40 pages - spiral bound. \$4.95 each, plus \$1 P&H.

— Classified —

FOR SALE: NEW 1966 Imperial Glass Catalog Reprint with Price Guide. Now available for your reference library - an authentic record of one of Imperials most colorful and productive periods. Over 1200 items shown including slag, peachblow, opalescent, carnival, milk glass plus special decorations. 68 pages (including 27 pages in color) 8½ x 11. \$19.95 plus \$1.50 postage. **George Fogg**, 40 Gray Street, Boston, MA 02116-6210.

WANTED: #3400/647 2-lite keyhole candlestick. Round base. Crystal, etched Portia. **Gail Capehart Long**, 2402 Windfield Court, Glen Mills, PA 19342. Phone: 215/358-1451.

FOR SALE: Several pieces Heatherbloom, Candlelight stemware, and Elaine pieces. 804/724-6762.

Memory tempers prosperity, consoles adversity,
cautions youth and delights old age.

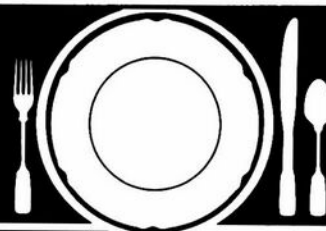
L. A. MANESS

RT. 1, BOX 552, ASHLAND, VA 23005
(804) 798-1825

C = MARKED P & I \$3.50 CTN

#1349 forest green ftd. 12" ruffled edge bowl, C.....	\$ 52
#3400 line, amethyst 12 oz. ball shape decanter & 6 1 oz. cordials, all.....	\$ 65
Caprice blue 6" square handled bon bon.....	\$ 32
Caprice blue 3-part 8½" relish..	\$ 42
Caprice blue 9 oz. goblet #300 (6) each.....	\$ 45
<u>CASCADE</u>	
Cream & sugar, set.....	\$ 16
Plates, 6½" (6) each.....	\$ 8
Sherbet (8) each.....	\$ 10
Tumbler, 5 oz. flat (4) each....	\$ 10
Tumbler, 12 oz. flat (8) each...\$	14

VISA/MASTERCARD WELCOME



How to Find Those Missing Pieces.

The world's largest source of discontinued and obsolete crystal -- as well as china and flatware -- Replacements, Ltd., buys and sells over 36,000 different patterns.

If you need a piece or several pieces to add to your collection ... or if you'd like to sell some unneeded extras ... call or write us. We can provide you with a complete printout of available pieces in your pattern. Or we'll let you know our prices for the pieces you wish to sell.

Replacements, Ltd.: a 100,000 square foot facility; 1.4 million pieces; over 600,000 satisfied customers. Contact us, or come see our showroom. Let us help you complete your collection ... or maybe you'll help add to ours.

REPLACEMENTS, LTD.

Call (919) 697-3000, FAX (919) 697-3100, or write:
1069 Knox Road • P. O. Box 26029, Dept. C • Greensboro, NC 27420

OVER 6800 CAMBRIDGE PIECES



BOX 52572 • TULSA, OK 74152
918 744-5409

CANDLELIGHT 14"D. Plate	\$ 65
ROSEPOINT 3121 CRYSTAL	
Goblet(8) \$ 35 ; Champagne(8) \$ 29	
Iced Tea(8) \$ 33 ; Sherbet(8) \$ 26	
ROSEPOINT 3121 GOLD ETCH ON CRYSTAL	
Goblet(2) \$ 37 ; Champagne(10) \$ 31	
Iced Tea(10) \$ 35; Cocktail(10)\$ 30	
Handled Basket	\$ 75
WILDFLOWER 14"D. Plate	\$ 55
APPLE BLOSS. YELLOW 3135 Champ(4)\$ 12	
3:00 8"Plate (18)	\$ 14
ELAINE GOLD ETCH 3500 Goblet(7) \$ 26	
Champagne(8) \$ 23; Iced Tea(3) \$ 25	
ELAINE GOLD ETCH 3400 8 Plts(7) \$ 12	
REGENCY(STRADIVARI) Goblet(12) \$ 25	
Champagne(12)\$ 23; Ice Tea (12) \$ 24	
PRESSED ROSEPOINT Mocha/Cry Stem	
Goblet(2); Cocktail(1) Ea	\$ 40
MOONSTONE (Scarce Color) Shell Patt.	
#10 10" 3 Toed Bowl	\$ 95
#7 14" Sandwich Plate	\$ 85

Mint/Price Ea. Xcept Noted-UPS Extra

The
DAZE

***SPECIAL OFFER**
to NCC friends \$2. off
the 1 year subscription
price when on this form
or copy of.

The Original National monthly newspaper dedicated to the buying, selling & collecting of colored glassware and china including Depression Glass and the Elegant Glass (Cambridge, Heisey, Fostoria, etc.) We educate and inform you each month with feature articles by top notch columnists, readers "finds", club happenings, show news and a multitude of ads. Find those missing pieces to your 30s, 40s or 50s pattern. Can't identify it? Perhaps we can help "Keep up with what's happening with a subscription to the DAZE. Buy, sell or trade from the convenience of your easy chair.

Name _____ Street _____

City _____ State _____ Zip _____

1 yr \$19 2 yrs \$37 \$2. Single Current Copy

Exp date _____ Card No. _____

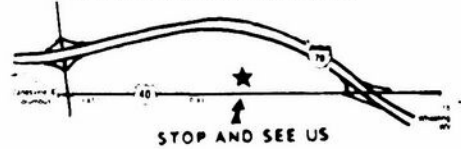
Signature _____

Orders to D.G.D., Box 57NC, Otisville, MI 48463

Please allow 30 days for your first issue - Canadian subscribers, add \$1. per year and subscribe by charge card only! This Special Offer may not be combined with any other special offer.

Stage Coach
Antique Mall

WELCOME TO CLASS COUNTRY!



RT. 40 ONE-HALF MILE WEST OF I-70 EXIT 8164
MANY DEALERS - WIDE SELECTION - PLENTY PARKING

WE FEATURE GLASSWARE OF:
CAMBRIDGE, HEISEY, FENTON, & FOSTORIA
Plus Art Pottery & a General Line of Antiques

DORIS AND ROY ISAACS
BUY AND SELL
614-872-3720



7525 EAST PIKE
NORWICH, OHIO 43767

MON THRU SAT 10-5:30 SUN 12-5:30
SUMMER EVENING HOURS BY CHANCE

**COLUMBUS ANTIQUE
FLEA MARKET**

(ANTIQUES AND COLLECTIBLES)

NOVEMBER 10th

Ohio State Fairgrounds—Lausche Building—Off I-71 Exit 17th Ave.

SUNDAY ONLY—7:00 AM TO 4:00 PM

1991 SCHEDULE 1991

**10TH
YEAR**

DEC. 8th

**10TH
YEAR**

150 Quality Dealers

Show admission \$1.50 • Children under 12 free

Heated/Air Conditioned • Concession



*"The Friendly
Family Business"*

4214 North High Street, Columbus, Ohio 43214
(614) 267-8163 (614) 263-6830 (614) 885-2352

DEALERS



DIRECTORY

NOTE: When writing to the Dealers listed here, please enclose a SASE!

<p>SANDY'S ANTIQUE MALL 617 Wheeling Ave. Cambridge, OH 43725 Phone 614/432-2570</p> <p>COLLECTOR'S ITEMS Summer 9 - 6 Daily * Winter 9 - 4:30 Mon - Sat</p>	<p>BENICIA ANTIQUE SHOP 305 First Street Benicia, California 94510</p> <p>OPEN 11 AM - 5 PM Closed Monday</p> <p>Z. E. LOPES 707-745-0978</p>	<p>THE MUTED SWAN ANTIQUES 5486 Peachtree Rd. Chamblee, GA 30341 Heart of Chamblee Antique Row</p> <p>Specializing in Cambridge, Heisey and Fostoria Bill & Pat Miller 404-451-7620</p>
<p>MILBRA'S MATCHING SERVICE P.O. Box 363, Rio Vista, TX 76093 Milbra Long 817 / 645-6066</p> <p>FOSTORIA * CAMBRIDGE * HEISEY * DEPRESSION ERA GLASSWARE</p> <p>BUY and SELL</p>	<p>VISIT HISTORIC BENICIA and its 28 shops</p> <p>Off Interstate #80 North of San Francisco</p>	<p>Elegant Depression Era Glassware</p> <p>ABBA ANTIQUES 1157 Charlie Lane Lilburn, GA 30247 Bill & Barbara Adt (404) 279-1942 Shows, Mail Order, & by Appointment</p>
<p>THE GLASS URN 456 West Main Street, Suite G. Mesa, AZ 85201 602 / 833-2702</p> <p>Mail Order Shows Open Shop</p> <p>CAMBRIDGE, FOSTORIA, HEISEY, ETC.</p>	<p>ANTIQUES ON THE MALL SPECIALIZING IN CAMBRIDGE GLASS</p> <p>Stagecoach Mall - Bldg. 3 - Norwich, OH Virginia Bennett 614/432-4483 64183 Warne Drive, Cambridge, OH 43725</p>	<p>GATEWAY ANTIQUE MALL 21122 - 134th Avenue North Rogers, MN 55374 I-94 & 101 (Exit #207, Turn North)</p> <p>Open 10-6, 7 Days - (612) 428-8286</p> <p>Elaine Stanck, Proprietor Diane Overton, Manager</p>
<p>ETTELMAN'S DISCONTINUED CHINA & CRYSTAL Cambridge a Specialty</p> <p>P.O. Box 6491-CB Corpus Christi, TX 78466 Phone (512) 888-8391 Include S.A.S.E.</p>	<p>D & D ANTIQUES Columbus, Ohio</p> <p>DICK SLIFKO SHOWS ONLY</p>	<p>DEER TRAIL ANTIQUES RONI SIONAKIDES (517) 669-5981</p> <p>6565 W. Herbison Rd. DeWitt, MI 48820 Fostoria, Tiffin, Duncan, Cambridge</p>
<p>THE GLASS CUPBOARD 39 Shire Oaks Drive Pittsford, New York 14534</p> <p>Marcia Ellis Cambridge, Duncan Miller (716) 586-7596 Shows, Mail Order, Appt.</p>	<p>JUDY'S ANTIQUES Judy Bennett 422 S. Ninth Street (Corner of Jefferson) Cambridge, Ohio 43725</p> <p>BUYING Ph. 614-432-5855 SELLING Cambridge Glass my Specialty</p>	<p>"HAPPINESS IS" Buddy and Kathy Stultz 3106 Warren Court, Glen Allen, VA 23060 804/672-8102</p> <p>Write or Call Us ----- We Do Ship</p>
<p>ELEGANT GLASSWARE Barbara Brock 26 Fayette St. Martinsville, VA 24112 (804) 724-6762</p> <p>Cambridge-Heisey-Duncan-Fostoria</p>	<p>GREEN ACRES FARM 2678 Hazelton Etna Rd., Pataskala, OH 43062 (State Route 310 North)</p> <p>Sat. & Sun. 1-7 PM 614/927-1882 Antiques, Crystal Glass and Collectibles</p>	<p>CROW'S NEST ANTIQUES Constance Crow Buying & Selling Elegant Depression Era Glassware</p> <p>Austin Antique Mall 8822 McCann Austin, TX 78758 (512) 371-0244</p>
<p>THE HITCHING POST 7467 S. R. 88 Ravenna, OH 44266</p> <p>Ph. 216-296-3686 D. McDaniel CAMBRIDGE — HEISEY — GENERAL LINE</p>	<p>PATCHES OF VIRGINIA Specializing in China and Glass Virginia T. Houston 34116 Roberts Rd., Eastlake, OH 44095 Phone: (216) 975-8315</p>	<p>CRYSTAL LADY 1817 Vinton St., Omaha, NE 68108 Joann D. Hagerty Bus. (402) 341-0643 Res. (402) 391-6730 Specializing in Elegant Glass & Collectables</p>
<p>YOU CAN ADVERTISE YOUR ANTIQUÉ SHOP HERE!</p>	<p>REMEMBRANCES 7597 Daphne Dr., No. Syracuse, NY 13212 Shirley S. Ladouceur 315 / 458-5297</p> <p>ANTIQUES and COLLECTIBLES MAIL ORDER SHOWS APPOINTMENTS</p>	<p>MARGARET LANE ANTIQUES 2 E. Main St., New Concord, OH 43762 Lynn Welker 614 826-4418</p> <p>CAMBRIDGE GLASS MATCHING SERVICE Hours Mon.-Fri. 1-5 PM or by Appointment</p>
<p>GLASS RESTORATION</p> <p>BRILLIANT CRYSTAL ELEGANT DEPRESSION</p> <p>DON & LYNNE WORMLAND MT. CLEMENS, MICH. 313/468-3519</p>	<p>WATKINS (Fine Quality) CAMBRIDGE GLASS SHOP 1429 Marquand Ave. (Corner of Woodlawn) Cambridge, OH (614) 432-4460 Lana Watkins</p>	<p>HELEN & JIM KENNON Heisey, Cambridge, Fostoria, Duncan, Imperial, Fenton, Tiffin P.O. Box 114 Brookville, OH 45309 PH: (513) 833-5406 SHOWS ONLY</p>



National Cambridge Collectors, Inc.

P. O. Box 416, Cambridge, Ohio 43725

A nonprofit organization dedicated to the preservation and study of Cambridge Glass

You Are Cordially Invited
To Become A Member Of The

NATIONAL CAMBRIDGE COLLECTORS, INC.

Benefits derived from membership include: receipt of our club publication, The Cambridge CRYSTAL BALL; Informative Quarterly Meetings; Antique Shows; Auctions; other special events; and unlimited admission to the museum.

The Cambridge CRYSTAL BALL is published the first of each month. This newsletter contains educational and interesting articles, questions and answers, information on reproductions and reissues, notices of all club functions, classified advertisements, dealers directory, and many other features of interest to collectors of Cambridge Glass.

Yearly dues are \$15.00 for Individual Members and \$3.00 for each Associate Member. All members have voting rights, but only one issue of the CRYSTAL BALL will be mailed per household.

Name (please print) _____ \$15.00

Mailing Address _____

City _____ State _____ Zip _____

Associate Members: (Must be at least 12 years of age and living in the same household.)

1. Name _____
 2. Name _____
 3. Name _____
- Total number of Associate Members _____ @ \$3.00 each \$ _____

TOTAL AMOUNT ENCLOSED: \$ _____

Please make check payable to: NATIONAL CAMBRIDGE COLLECTORS, INC.

Recommended by _____

N.C.C. MEMBERSHIP IS A PERFECT CHRISTMAS GIFT!

THANKSGIVING

by Paul E. White

Thank you, dear Lord, for people
 Who know how to say, "Thanks."
 Whose gratitude is verbal
 Or written - to fill the blanks;
 Who understand the effort
 However little or great
 That stands behind every favor
 Or gift, - the thought interpolate.

So make us thoughtful receivers,
 Ones who know how to take,
 As well as generous givers.
 There's equally much at stake.
 A prayer doesn't need an answer,
 The thought is sufficient return.
 A wish is a prayer infinite.
 Thanksgiving - one you may earn.

NOVEMBER 1991

NCC Museum of Cambridge Glass

The museum is located on U.S. Route 40, one-eighth mile east of I-77 near Cambridge. Hours: 10 a.m. to 4 p.m., Wednesday through Saturday; noon to 4 p.m., Sunday (March through October). Phone 614/432-4245.
 Closed Mondays, Tuesdays, Easter and the Fourth of July.

National Cambridge Collectors, Inc.
 P. O. Box 416, Cambridge, Ohio 43725

FIRST CLASS MAIL

FIRST-CLASS MAIL
 U.S. POSTAGE
PAID
 So. Vienna, Ohio
 45369
 Permit No. 15

Membership Renewal Notice

This is your **last** issue of the *Crystal Ball*—if the date on your address label reads 11-91.

Please renew now!