



Cambridge Crystal Ball

Published monthly by National Cambridge Collectors, Inc.
to encourage and report the discovery of the elegant and boundless product of the
Cambridge Glass Company of Cambridge, Ohio

Issue No. 266

June, 1995

MR. BENNETT'S MAGIC LAMP

By Bud Walker

(Editor's Note: If you love collecting Cambridge, you must read this article NOW. When you're done, you'll understand what I mean. It's the most enchanting feature I've ever read!.)

At the 1994 Convention, we became the successful bidders for A.J. Bennett's lamp. According to our auctioneer, Willard Kolb, this lamp would allow us to see into the future. This "See in the Future" lamp has an Ebony Nude stem, with a Milk Glass miniature lamp fitting and Green shade on top. I thought that by purchasing the lamp we could help the museum.

Little did I realize, how that little lamp could influence our future. Upon arriving home the little lamp became part of my Cambridge collection. It was placed on a high shelf so that our grand children would not be tempted to play with it. As soon as the lamp was on the shelf, good things began to happen. I received a phone call from a local dealer. She wanted to know if I would be interested in purchasing a Crystal Swan Punch Bowl, base and cups. This turned out to be only the beginning. Next came a call if I would be interested in a Pink Melon Boy flower frog. Of course I was! Soon after, we visited a local flea market. There sat an Ivory master and four individual berry bowls. This was followed up by several pieces of Japonica. I started becoming suspicious that something was up, when next came a Flying Lady Bowl in Windsor Blue.

Then as if a light had been turned on, I realized that my good fortune was due to Mr. Bennett's lamp. As far as Cambridge was concerned I was able to find pieces that I had never seen before. Next came a pitcher and tumbler in the Buzz Saw pattern in Green Carnival glass.

By now I was becoming a little alarmed. All of these wonderful finds were having an adverse effect on my wallet. The antique show in Atlantic City convinced me that drastic action would be required. At this show, we found the Helio candle holders and bowl. Next came the Community wash basin and pitcher in Mulberry.

Upon arriving home, I made one of the toughest decisions that I have ever had to make. The little lamp would have to go, if not, I would end up in the poor house.

After discussing it with Willard Kolb, we decided that this little gem will go to the highest bidder at the 1995 Convention Mini Auction. To eliminate lookers and tire kickers, I have opened the bidding for the little lamp at one hundred dollars. Those of you who are in need of a guiding light to help in your Cambridge collecting, save your money and come prepared to bid high. The little lamp will show you the way to improve your collection. Believe me when I tell you this lamp is one of a kind, and if you are a serious collector, you cannot afford to be without it.

Cambridge CRYSTAL BALL

Official Publication of National Cambridge Collectors Inc., a non-profit corporation with tax exempt status. Published once a month for the benefit of its members. All rights reserved; reproduction in whole or in part without written permission of NCC and the author is prohibited.

Membership is available for individual members at \$17.00 per year and an additional \$3.00 for associate members (12 years of age and older, residing in the same household). Of the master member dues, \$12.00 is credited to a one-year subscription to The Crystal Ball. All members have voting rights, but only one Crystal Ball per household. Back issues of the CRYSTAL BALL are available for \$1.00 each or 12 issues for \$10.00.

1994-1995

OFFICERS AND COMMITTEE CHAIRPERSONS

President.....	Joy R. McFadden
Vice-President.....	Mark A. Nye
Secretary.....	Richard D. Jones
Treasurer.....	Charles Upton
Sergeant-at-Arms.....	Cynthia A. Arent
Acquisitions.....	Joe Andrecjak
Budget & Finance.....	Mark A. Nye
By-Laws.....	Charles Upton
Long-Range Planning.....	Rick Jones, Tarzan Deel Mike Arent
Membership.....	Jeff Ross
Museum Expansion/Relocation.....	Willard Kolb J.D. Hanes
Museum Facilities.....	Carl Beynon, Joe Miller
Museum Interior.....	J.D. Hanes
Non-Glass Items.....	Tarzan Deel
Nominating.....	Mark A. Nye
Program.....	Open
Projects.....	Tarzan Deel
Publications.....	Mark A. Nye
Publicity.....	Cynthia A. Arent
Study Group Advisor.....	Marybelle Moorehead
1995 Auction.....	Lynn M. Welker
1995 Antique Show.....	Mary Beth Hackett, Charles Upton
1995 Flea Market.....	Marybelle Moorehead
CRYSTAL BALL Editors.....	Rick Jones, Mark Nye
Managing Editor.....	J.D. Hanes

National Cambridge Collectors, Inc. owns and operates the **Museum of Cambridge Glass** at 9931 E. Pike Road Cambridge, Ohio. Open April through October 9AM-4PM Wednesday through Saturday and Noon-4pm on Sunday. March open Friday-Sunday. Closed November-February, Easter, July 4th.

ADVERTISING RATES

Display Rates (camera ready ads preferred)

Unit	Members	Non-Members
Full Page	\$45.00	\$60.00
3/4 page	\$35.00	\$50.00
1/2 page	\$25.00	\$35.00
1/4 page	\$15.00	\$25.00
1/8 page	\$10.00	\$15.00

Classified Rates

10 cents a word \$2.00 minimum

Abbreviations and initials count as words. Type sizes cannot be mixed in classified ads. Payment in full must accompany all ad copy. Contact Editor for copy assistance

Dealer Directory

Six Line Maximum \$24.00 for 12 month contract

Cambridge CRYSTAL BALL assumes no responsibility for items advertised and will not be responsible for errors in price, description, or other information.

Advertising copy, letters, articles, must be received by the 5th of preceding month to be considered for publication in the next issue.

Please address all correspondence (include SASE) to:

**National Cambridge Collectors, Inc.
P.O. Box 416, Cambridge, Ohio, 43725-0416**

President Joy McFadden:	614-885-2726
Secretary/Co-Editor Rick Jones:	914-631-1656
Co-Editor Mark Nye	517-592-6200
NCC Museum, Phone and Fax	614-432-4245

Please notify us immediately of any address change.

Opinions or information stated in any signed article or letter printed in the CRYSTAL BALL are those of the author and may not agree with National Cambridge Collectors, Inc. The Editor reserves the right to refuse and to edit any material submitted for publication to conform to the editorial style of the CRYSTAL BALL. Members are encouraged to write to NCC and the Crystal Ball sharing their knowledge and questions!

CONVENTION 1995

LESS THAN THIRTY DAYS TO THE THIRTIES

By Mark Nye

Although the 1994 Convention begins within the month, June 22 to be exact, you still have time to make arrangements to attend. If you have not already done so, complete your registration form and mail it today. All registration forms must be received by June 12.

I hope everyone has made their motel reservations by now. If the motels within Cambridge are full, rooms should be available in Zanesville or at the Shenandoah Motel and Truck Stop. For those of you not familiar with the Shenandoah, it is located on I-70, seven miles east of Cambridge and was the site of the convention until the Civic Center was built. Due to the repair work on I-70, the detour and the uncertainty of when it will reopen, I would recommend the Zanesville motels as the alternate site.

New to the schedule is a session on mold-making led by Mssrs. Russi and Hill from Fenton. This will be held on Saturday at 1 p.m. and be very informative. Your convention packet will contain the final Convention schedule.

If you have never visited an operating glass factory and can be in Cambridge Thursday morning, I highly recommend the trip to the Dazell-Viking factory. The buildings are those of the old New Martinsville Glass Co. and are a part of the history of American glass manufacturing.

Don't forget the picnic and band concert on Thursday evening. Parking at the Bennett Museum is limited and car pooling is recommended when going there on Friday morning.

Please bring donations for the mini-auction. Donated items need not be museum quality pieces, but must something with which we can raise money. Just remember that the mini-auction is a FUN AUCTION and not a scaled down version of the All Cambridge Auction held in the spring. All the items auctioned are donated and all the funds raised go totally to the Museum.

As in the past, there will be a book sales table at

the Glass Show. We are still hoping to have the 1940 catalog reprint completed in time for the Convention.

There will be special displays relating to the convention theme, The 1930s, in the show cases at the Civic Center. These will include unusual items from the ball shaped line.

Be sure to bring your unusual items, either to brag about at Bring & Brag or to have identified.

If possible, plan to attend the Former Workers Reunion Sunday afternoon. It is an opportunity to meet some of the people who made the glass we collect and get some first hand history. Their ranks are thinning each year and with the passing of each former worker, a bit of the company history is lost forever.

The latest word that I have is that the repairs to I-70 should be completed by convention time and the highway reopened, thus eliminating the detour past the Museum. Whether or not this happens remains to be seen, but won't spoil our Convention!

See you in Cambridge.

CONVENTION REGISTRATION

If you have not yet registered for our 1995 Convention and are interested in attending, please check your May Crystal Ball for the official form.

Missing a May issue? Then call the NCC Museum at 614-432-4245 and request a registration form. It can be mailed to you or Faxed. Our fax number is the same as the phone number. It works after hours or anytime during the day if you call ahead and speak to J.D. Hanes.

Our regular Museum hours are Wednesday through Saturday from 9 a.m. to 4 p.m. and Sunday from 12 noon until 4 p.m. If you have never visited the NCC Museum, it alone is worth the trip!

CAMBRIDGE GLASS BOOKS FOR SALE

By National Cambridge Collectors, Inc.

Colors in Cambridge Glass

128 pages, 60 color plates, fully indexed, Hardbound with price guide \$19.95

1930-1934 Cambridge Glass Company Catalog Reprint

250 page reprint of original catalog, Paperback with price guide \$14.95

1949-1953 Cambridge Glass Company Catalog Reprint

300 page reprint of original catalog, Paperback with price guide \$14.95

1956-1958 Cambridge Glass Company Catalog Reprint

164 page reprint of original catalog, Paperback \$12.95

Cambridge Caprice

200 page book illustrating the most popular line of Cambridge Glass. Lists color, decorations, reproductions and rare pieces. Paperback with value guide \$19.95

For NCC Members Only, the above publications are available at a 10 percent discount.

By Bill & Phyllis Smith

Cambridge Glass 1927-1929

66 page reprint of original catalog, Paperback with identification guide \$7.95

By Cambridge Buffs Study Group

Nearcut (Temporarily Out-of-Stock)

108 page reprint of 1910 Cambridge Catalog, Paperback with price guide \$9.95

Price Guide, Price alone, includes postage \$3.00

By Mark A. Nye

Cambridge Rose Point

94 Pages, fully indexed, Paperback with Value Guide \$12.95

Value Guide

Updated value guide for Rose Point Book, Included with above. Price alone, includes postage \$5.00

Cambridge Stemware NEW. 2nd edition. Same format as original. \$19.95

By Mary, Lyle and Lynn Welker

Cambridge Glass Company

120 pages of reprints from eight old catalogs, Paperback \$10.00

Cambridge, Ohio Glass in Color II, Spiralbound \$5.95

By Harold and Judy Bennett

1903 Cambridge Glass Company Catalog Reprint

106 page reprint of an original catalog, Paperback \$7.50

By Degenhart Paperweight and Glass Museum

Reflections, 45 page book giving a history of all 18 glass companies in Guernsey County. Paperback, with pictures. \$5.00 including postage

Address orders to: Books, National Cambridge Collectors, Inc., PO Box 416, Cambridge OH 43725-0416

Please add postage and handling to your order (first book, \$2.00 each additional book, 50 cents), Ohio residents add 6 1/2% state sales tax. Please send only check or money order, NO CASH, NO CHARGE CARDS. Dealer Discounts Available - Please Write!

President's Message: Yes, There is a Business Side

Each month as I write this article, I would like to be light and talk about the joys (no pun intended) of collecting. There are so many positives; the love of the glass, the excitement of tracking down that special piece, and the pleasure of meeting and exchanging stories with the many special people you meet. Each of you could tell many stories about your collecting adventures.

There is another side to the National Cambridge Collectors, Inc. The dreaded business side. I could never begin to tell you of the excitement of a discussion about the business side of this collecting adventure. First, you don't want to read this, and second of all, the space should be dedicated to articles about Cambridge Glass. Right?

There is a method to my madness. I want to tell you again about the dedicated Board of Directors, who travel many miles by car and plane to attend a meeting four times a year to discuss the dreaded business side of maintaining a Museum and an Organization like N.C.C. Do we have all the answers? Do we make all the right decisions? All I can say to you is that we do the very best we can collectively do to run this business (and yes, it is a business) the best we can. We have some dedicated, knowledgeable people on the Board and they spend many hours donated to this cause. Our effort is dedicated to study and preservation of collecting the Cambridge Glass that we all know and love, and monitoring all the items necessary to that end.

When I first joined the Board, I knew part of what was involved because my spouse had been a board member, but I had NO idea. I could tell you all we consider in dealing with the business end, but as I said before, you don't want to read this. Let me just say that I am fortunate to have known and worked with these people who are dedicated to the business side of this organization. They are special and I want to extend a THANK YOU to all of them.

Are your plans finalized for the Convention? I hope so. Please say hello when you attend the Convention. Mark Nye has some special things in store for you. See you then.

THIRTIES SUPERSTAR: FIGURE STEM LINE

By Mark Nye

On August 25, 1931 a patent application was submitted by the Cambridge Glass Co. in the name of its Corporate Secretary and Sales Manager, Will Cameron McCartney. Of all the Cambridge lines that originated during the 1930s, the line covered by this patent and Rose Point are the two most recognized as being Cambridge. Design Patent No. 85,618 issued November 24, 1931 covered what we now refer to as the "Cambridge Nudes" The text of that application follows.

"Be it known that I, Will Cameron McCartney, a citizen of the United States of America, and resident of Cambridge, county of Guernsey and State of Ohio, have invented a new, original, and ornamental Design for a Goblet or Similar Article, of which the following is a specification, reference being had to the accompanying drawing, in which--

"The single figure is a perspective view of a goblet or similar article showing my new design.

"The invention resides in the stem which comprises a nude female figure occupying upstanding position with both arms upraised, balancing upon the head by means of the hands an urn like figure upon which is superposed the bowl of the goblet. Said figure is represented as standing upon an elevated central portion of the base with one foot and an adjacent portion of a leg enveloped by a fallen gauze-like scarf.

The arms are represented as occupying similar fully exposed positions at opposite sides of and at substantially equal distances from the head, and the unshorn hair is represented as falling in a loose wind-blown mass over one shoulder. The opposite or reverse side of the stem shows the nude back of the female figure with the disclosed forms of the urn-like figure and the base repeated in all substantial respects.

"I claim...

"The ornamental design for a goblet or similar article, substantially as shown and described."

At the time of its introduction, the line was known as the No. 3011 or "Figure Stem Line." Later, the name "Statuesque" became associated with the line

and during the late years, "Lady Figure Line" was used as the common name. Today, the line is most often referred to as "Nudes" or "Cambridge Nudes".

In addition to other items, the Figure Stem Line contains thirteen pieces of stemware including two goblets, the banquet and table goblets. Of all the stemware, the 3011/9 cocktail is the most frequently found item today.

One of the four drinking vessels shown in the original trade advertisement that introduced the Nudes, the 3011/9 cocktail appears to have been in production during the entire period from 1931 until the 1954 plant closing and again during the reopen years.

While non-decorated cocktails are easily located, decorated Nude cocktails are scarce and remain hard to find. Known decorations consist of the etchings Apple Blossom, Gloria, Rose Point, Vichy and No. 758; the engraving No. 611; various Rockwell Sterling decorations; and etched Rose Point, gold encrusted. With the exception of Rose Point, all of the etched nudes were definitely produced during the 1930s as were those engraved No. 611. Rose Point etched nudes probably date to the late 1930s also but production may have occurred during the early 1940s.

The 1940 Cambridge price list offered the cocktails in Crystal, Amber, Forest Green, Royal Blue, Amethyst and Carmen with clear or frosted stems. January 1942 saw the cocktail being offered in what Cambridge called Harlequin Sets. These sets consisted of a Nude Cocktail in each of eight colors, La Rosa, Moonlight, Mocha, Pistachio, Gold Krystal, Amethyst, Forest Green, and Tahoe Blue.

In the fall of 1950, the cocktail was offered in a reduced but still varied array of colors. With a Crystal stem and foot, the available bowl colors were Amber, Amethyst, Emerald(dark), Mandarin Gold and Carmen. In the colors of Amber, Amethyst, dark Emerald and Mandarin Gold, the cocktail was available with a satin finished stem and foot.

(continued on page 18)



The Cambridge Glass Company



3011



Banquet Goblet



Table Goblet



Saucer Champagne



6 oz. Hock Glass



5 oz. Roemer



4 1/2 oz. Claret



4 1/2 oz. Sauterne



3 oz. Cocktail



3 oz. Cocktail (3122)



3 oz. Cocktail (3126)



3 oz. Wine



1 oz. Brandy



1 oz. Cordia



Covered Sweetmeat



Cigarette Box & Cover (Small Stem)



Cigarette Box & Cover (Large Stem)



Ash Tray



Cigarette Holder



9 in. Candlestick



9 in. Lustre Cut Prism Candlestick
w/Crystal Bobche & No. 1 Prisms



7 in. Comport, Flared



7 in. Comport, Cupped



The Cambridge Glass Company



3011



3011/25
Ivy Ball



3011/29
4 in. Mint



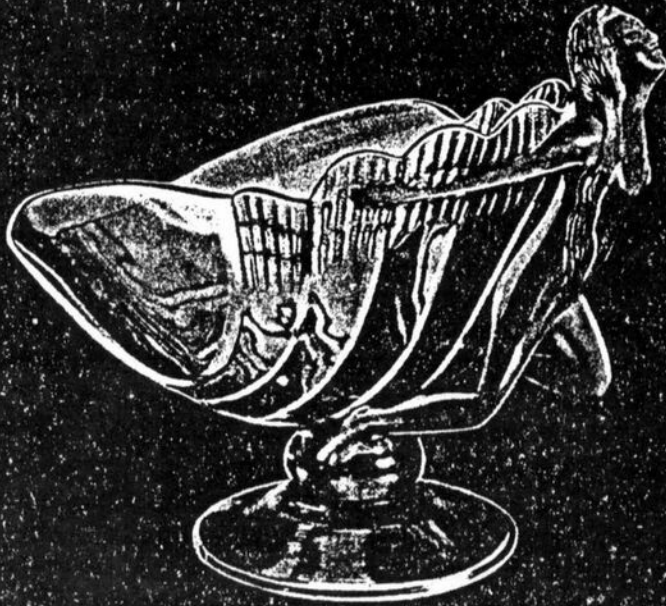
3011/26
Bud Vase



3011/27
5 3/8 in. Compot



3011/28
Covered Candy Box



3011/40
10 in. Flower or Fruit Center

TURN TICKETS: INSIGHTS INTO THE BUSINESS OF GLASS MAKING, PART ONE

By Tarzan Deel

The Non-Glass Committee has been cataloging and restoring to the degree possible, numerous paper items that remain as part of the history and heritage of the Cambridge Glass Company. Many of these add new insights to the production process and shed light on the business success or failure of the factory.

Turn tickets provide history of a typical production shift. They indicate what was produced, by whom, and the quantity of the item that was successfully made and what had to be repaired or junked. Of all the documents NCC possesses, the Turn Card/Turn Ticket(s) are among the most interesting. The club has only a limited number of these records as the Company did not feel the need to keep them. Most of what does exist, dates to the 1950's.

Over the next few months, we will publish some of these turn tickets to give you insights on the glass making process. You may be astounded by how much product was destroyed. The success rate was dismal compared to today's manufacturing standards. However, we must bear in mind that this was *handmade glass*. It's fragility was extreme. Glass making was truly an art, one our club members respect and acknowledge. In the next Crystal Balls we'll add definition to the terms on the turn tickets.

What is a Turn Card/Turn Ticket? A turn is a four hour shift which represented a "move" for a particular product. The move will depend on what the product is. A larger item will take longer and thus, less is produced. If problems occur, the "move" may not be completed but it will still be a turn (or a production cycle in today's terms).

Byesville Cards? You'll notice Byesville on some of the tickets. These were the remaining inventory which Cambridge used after the Byesville plant closed, until of course, the Cambridge Glass Company went out of business. We have been able to locate large quantities of blank turn cards. Either they ordered too many cards in inventory or they expected to be in business longer than the fates permitted.

The O.M German System? We don't know, but are investigating.

What do all the terms on the turn ticket mean? Let's go one at a time (more next month):

Date: Obvious.

Shop No.: This is the area of the factory floor performing the work.

Turn: This is the number of the turn. If the product had been run before in the same production period, then the number would be increased for each turn run.

Hours worked: Almost always four hours unless their were production problems.

Ware: The item produced. The item number, description and color are often provided on this line.

Move: This is the number of items expected to be produced on this turn.

Blower: When the item was blown, the name of the blower and his rate is provided (check out the wages!)

Gatherer: Almost all production had a gatherer, the name and rate were listed.

Foot caster: If the item had an applied foot, then a foot caster was used.

Foot presser and gatherer: same as above.

Finisher: All items had a degree of finishing. Some required more effort and a specific finisher was assigned.

Handler: unknown.

Card No. 1191 (facing page): The item was a Regency 12 oz. footed tumbler in crystal with no etching. The normal "move" was 360 but only 300 were produced at this turn. Of those, 29 were scrapped on the production floor and 87 more were rejected for several reasons noted on the card.

Given this was the 8th turn of this item, the failure rate is surprising. If we can find the other turn tickets maybe we can piece together this 1953 story and what insight it might provide on why the company failed. Of course, one piece cannot make a company fail, but if the trend was similar with other lines it sheds light on the downhill slide of Cambridge's business. More later...

32

BYESVILLE

No. 1191

Date <i>1/8/53</i>	Shop No. <i>1</i>	Turn <i>8</i>	Hours Worked <i>4</i>
--------------------	-------------------	---------------	-----------------------

WARE <i>Regency 129 Std Jumbo Pl - Lead</i>	MOVE <i>360</i>
	RATE

Blower	<i>G. Bats</i>	<i>766</i>
Gatherer	<i>M. Sisk</i>	<i>6471</i>
Foot Caster	<i>F. Freeman</i>	<i>7661</i>
Foot Straightener	<i>W. Anderson</i>	<i>6311</i>
Foot Presser		<i>2810</i>
Foot Gatherer		
Finisher		
Handler		

SHOP COUNT: *300*

Too Heavy	
Scatched	
Rings	
Crizzled	<i>14</i>
FOR Cracked	<i>3</i>
Bad Color	
Stem Blisters	
Foot Blisters	<i>8</i>
Light Weight	
Blisters	<i>9</i>
Stones	<i>14</i>
Cords	<i>3</i>
Rocky	<i>5</i>
Flat	
Not Blown Out	
Pressed Up	
Water Cracked	<i>3</i>
Cupped In	

SELECTORS: *281*

Shop Breakage	<i>5</i>
Bad Made	<i>ft 1</i>
Bat Bottoms	
Mould Marked	
Marver Chilled	
Dirty	
Dirty Feet	
Marked Feet	<i>14</i>
Crooked Feet	
Crooked	
Crooked Stem	
Iron Scale	
Crooked Optic	
Shear Marked	<i>f 14</i>
Wavy	
Stuck	
Pinched	
Check Crack Feet	

FOR

Seedy	
Smear Cracked	
Twisted Stem	
Sulphured	
Stony Feet	<i>2</i>
Cordy Feet	
Stony Stem	
Heel Cap	
Set On Crooked	
Too Tall	
Bad Color	
Cracked Feet	
Chipped Feet	<i>2</i>
Lehr Breakage	
Lehr Melts	
Come Apart	

	Trays	Loss	Good	Seconds	Rocky
Selector	<i>EO</i>	<i>87</i>	<i>194</i>		
Cut-off by	<i>7B</i>		<i>194</i>		

JOB	NAME	Hours Worked	Wages	Bonus
Stem Presser	J. M. Hill		✓ 4 84	
Stem Gatherer	A. Jander		✓ 4 54	
Bit Gatherer	L. Mullett		✓ 4 74	
Carry-in	H. Elliott		✓ 4 30	
Carry-in				
Carry-over				
Cracking-off				
Warming-in	C. Dawson		✓ 4 40	
Warming-in	W. Lenhart		✓ 4 40	
Mold Holder			<u>27 32</u>	
Handle Gatherer				
Handle Gatherer				
Ball Holder				
Cleaning Off				
Straightener				

NATIONAL STUDY GROUP REPORTS

NORTH TEXAS STUDY GROUP #15

The Cambridge Collectors of North Texas held their March meeting on the 16th, with 5 members and 1 guest present. The meeting was hosted by Gerri Cook.

We had an opportunity to view Gerri's collection of Rose Point, as well as her collection of German Zone eggshell china and pieces of Birds and Strawberry. An Indiana Glass Company pattern, Birds and Strawberry is somewhat difficult to obtain here in Texas, as the one and only Mrs. Ladybird Johnson (yes, THAT Ladybird Johnson) also collects the pattern and generally has had "first dibs" on anything that becomes available. If you visit the Texas White House, you MIGHT get a chance to see parts of her fabulous collection!

Members each brought a piece or pieces of Cambridge Glass for a "show and tell". Items included: a #1402/80 Tally-Ho 6 1/2" round base candlestick in Carmen; #1402/70 Tally-Ho candlestick with the square base in Carmen; Caprice Mustards in both Crystal and Moonlight Blue; a #463 Dolphin handled console bowl in Light Emerald. Naturally, out came the "black light" to properly view the console bowl. What a great glow that fluorescent green has in ultraviolet light!

- **Scott Pierce**

MIAMI VALLEY OF OHIO STUDY GROUP #13

The Miami Valley of Ohio Study Group held their monthly meeting on April 11, 1995 at the Huber Heights Library. There were ten members present.

During the business meeting, there was discussion of correspondence with the Board of Directors, work in progress on the etchings book, next month's program on pitchers to be led by Ken and Judy Rhoads, correspondence from Frank and Vicki

Wollenhaupt thanking the group for flowers sent at the time of the death of Vicki's mother, a planned pizza party, and correspondence received by Dave Rankin as a result of his invitation in the Crystal Ball for people interested in glass collecting to communicate by e-mail.

Our program was led by Ron and Norma Hufford, who recently returned from a glass blowing workshop at Oglebay. The videotape, which they narrated for us, showed each of them making a paperweight and a vase. After showing the tape, they displayed the pieces they had made. After describing the process, the degree of difficulty, the skill level and the lung power needed to work with glass, we were impressed with their beautiful results. We came away with a new appreciation for the skill and hard work that was expended day after day by the glass workers at the Cambridge factory.

Show and Tell: #2653 Ribbon tray, signed Nearcut; Cascade Crystal cigarette box; Crystal tumbler, etched Betty; Mt. Vernon Crystal 3 part divided relish; Amber candlestick; #1209 pair of Emerald #2 Everglade candlesticks; #3121 3 oz. cocktail, rock crystal cutting Achilles; 8" salad plate, etched Marjorie, starburst bottom; #1237 pair of 9" Light Emerald vases, etched Gloria; #3400/29 Light Emerald tall cream or syrup, etch Gloria; #3500/108 pair of 2 1/2" candlesticks, etched Rose Point; paperweight: Guernsey County Courthouse, 1881, Cambridge, Ohio; #1066 Carmen 5 3/8" footed covered candy box; #1040 3" Swan, Royal Blue, signed; #109 pair of Mulberry 9 1/2" Dolphin candlesticks.

- **Judy Rhoads**

Editor's Note: These were the only two study group reports received by our closing date. Stay tuned to the July Crystal Ball for more group reports. If you have any questions for the Study Groups (to share their learning), drop us a note at the Museum P.O. Box and we'll pass it along.

National Cambridge Collectors, Inc.
Balance Sheets
December 31, 1994 and 1993

Assets	<u>1994</u>	<u>1993</u>
Current assets:		
Cash	\$ 92,122	79,062
Accounts receivable	23	17
Inventories	5,102	5,848
Prepaid expenses	1,404	1,670
	-----	-----
	98,651	86,597
	-----	-----
Property and equipment:		
Land	24,500	24,500
Buildings	51,214	51,214
Building improvements	45,798	45,798
Furniture and equipment	14,937	13,938
Display fixtures	15,348	15,348
Museum contents	54,411	51,744
	-----	-----
	206,208	202,542
	-----	-----
Less accumulated depreciation	93,115	85,772
	-----	-----
	113,093	116,770
	-----	-----
Other assets:		
Deposits	44	44
Miscellaneous	2,424	2,424
	-----	-----
	2,468	2,468
	-----	-----
	214,212	205,835
	=====	=====

Liabilities and Fund Balances

	<u>1994</u>	<u>1993</u>
Current liabilities:		
Accounts payable	\$ 651	2,191
Deferred revenue	9,104	9,329
Accrued, other	580	685
	-----	-----
	10,335	12,205
	-----	-----
Fund balances:		
Operating fund	42,880	39,207
Museum fund	160,997	154,423
	-----	-----
	203,877	193,630
	-----	-----
	214,212	205,835
	=====	=====

National Cambridge Collectors, Inc.
Statements of Activity and Changes in Fund Balance
Years Ended December 31, 1994 and 1993

	<u>Operating</u> <u>Fund</u>	<u>Museum</u> <u>Fund</u>	<u>Total</u>	
			<u>1994</u>	<u>1993</u>
Support and revenue:				
Admissions	\$ -	1,014	1,014	640
Memberships	17,525	-	17,525	17,143
Donations	-	12,017	12,017	12,397
Auxiliary activities and sales	10,316	38,051	48,367	31,845
Interest	906	1,756	2,662	2,357
Other	-	23	23	99
	-----	-----	-----	-----
	28,747	52,861	81,608	64,481
	-----	-----	-----	-----
Expenses:				
Supporting services	17,017	29,766	46,783	40,382
Cost of auxiliary activities and sales	8,057	16,521	24,578	13,915
	-----	-----	-----	-----
	25,074	46,287	71,361	54,297
	-----	-----	-----	-----
Excess of support and revenue over expenses	3,673	6,574	10,247	10,184
Fund balances, beginning	39,207	154,423	193,630	183,446
	-----	-----	-----	-----
Fund balances, ending	42,880	160,997	203,877	193,630
	=====	=====	=====	=====

A complete copy of the 1994 Financial Statement as prepared by the Club's accounting firm, is on file at the NCC Museum and available for review by any member of the organization. This report was shared with the membership by Treasurer Charles Upton at the March Quarterly Meeting.

Last Chance Offer \$49 Crystal Ball Back Issue Sale

Our backlog is your benefit! The Paper Room at the NCC Museum is overflowing with back issues of our Club Newsletter. We need to clear room to store more of the historical documents regarding the Cambridge Glass Company. We want this room accessible to members.

From April through June, we are offering *complete sets* of the Crystal Ball from the start of the Club for the incredible price of \$49 (plus shipping). Most newsletters will be the original, some may be photocopies.

All proceeds from this sale benefit the NCC Museum Fund. **Call or write the Museum. Act now and pick them up at the Convention.**

RECENT FINDS

#3011/61 pair of Nude candlesticks in Windsor Blue with bobeches and prisms.

#3011/40 10 1/2" flower center (flying lady bowl) in Windsor Blue.

#3121 Clarets, Rosepoint etch

IN MEMORIAM

Bill Hagerty informed us of the passing of member Darrell Hermann of Nebraska. Our deepest sympathy is extended to his wife Janice and other family members. "May it comfort you to know that others do care".

ISAACS ANTIQUES



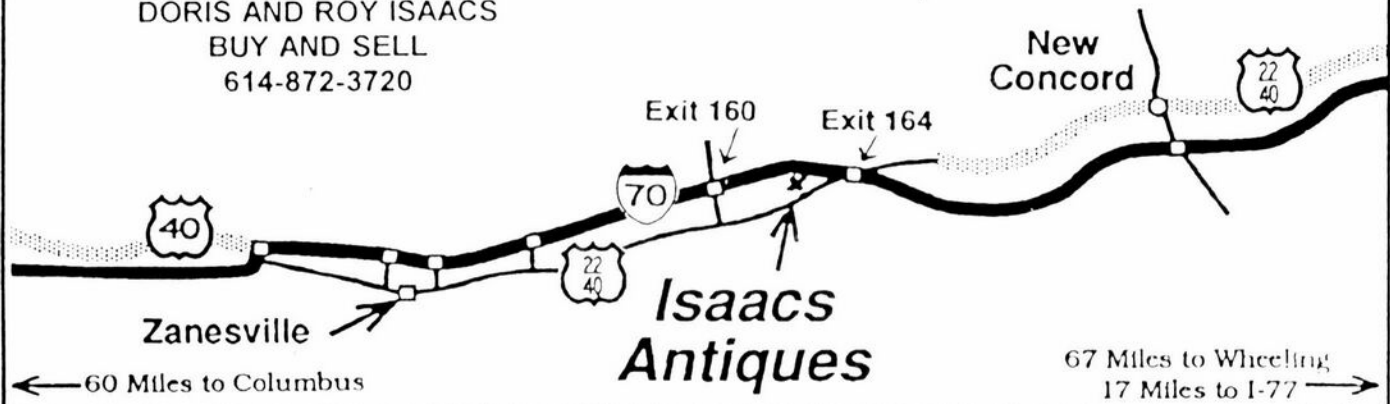
WE FEATURE GLASSWARE OF: CAMBRIDGE, HEISEY, FENTON & FOSTORIA
Plus Art Pottery & a General Line of Antiques

DORIS AND ROY ISAACS
BUY AND SELL
614-872-3720

7525 East Pike
Norwich, Ohio 43767
614-872-3720

In East Pike Antique Complex - Rt. 40,
One Mile West of I-70 Norwich Exit #164

Hours 10 - 5:30 Mon. - Sat.
12 - 5:30 Sun.
Open Year Round



MUSEUM MOMENTS

By J.D. Hanes

I can't believe that it is only about a month until the convention! Time really does fly.

The road construction and detour of Interstate 70 still continues as of this writing. The state is still shooting to have a portion of this fixed by June 21st, but I really don't know how realistic that is. The repair crews were hampered by the "April Showers" that we kept having. However, this should not keep up too much longer.

If any of you are planning to bring a donation for the Museum to the convention, please give it to one of the members of the Museum Interior Committee. To refresh your memory those persons are: Shirley Beynon; J.D. Hanes; Marybelle Moorehead; Jeff Ross and Lynn Welker. We will have receipts to fill out for your items. Doing it this way helps us to keep our records current and to make sure that you get the proper credit for your donation.

I have a correction from last month's article. Somewhere between my typing in my article and the actual typesetting of the article, one of our members had their name changed. In the donation from the Chicago Nudes Study Group, the name of one of their members should be B.J. Kersey, not B.J. Cars. This must be one of those computer "gremlins" that we all have experience with. Mr. Kersey is a very good supporter of this organization, and I apologize to him for the error.

Changes in the displays of the museum are still on going. We have in place the display cabinets that were donated by Roy and Doris Isaacs. Also, Charles Upton donated a cabinet to us, and we have managed to get them all in place and have some new displays in them. I think that you will appreciate what we have done. Of course, we are always willing to hear your ideas on new displays. Remember that *all of you* are a part of the museum.

In closing, remember to return your convention registrations and ballots by the deadlines. From what I hear the Convention will be even better. Also the Glass Show and Sale and the Flea Market sound really good and exciting. You don't want to miss out on these. Until next month, Happy Cambridge Collecting!

ROBERT W. RILEY
PO BOX 4180
SPRINGFIELD MA 01101
(413) 739-366 8PM - MIDNIGHT
P & I EXTRA

NEARCUT

#2660 Toy Wheat Sheaf punch bowl	\$45.00
#2630 Green Toy Colonial spooner	\$28.00
#1 Nearcut toy water pitcher	\$25.00
#2631 Marjorie water bottle	\$45.00
#2651 Feather 8" plate, signed	\$18.00
#2651 Feather 9" ruffled bowl (E shape)	\$25.00
#2699 Buzz Saw 9" bowl (A shape)	\$25.00
#2760 Daisy footed oval banana boat	\$22.00
#2766 Inverted Thistle 9" bowl (A shape)	\$30.00
#1012 Wheatsheaf blown s & p (no tops)	\$20.00

ETCHED

#3400/14 7" tall comport etch Portia w/gold trim	\$75.00
#3900/100 6 oz. oil etch Rose Point	\$100.00
#1327 1 oz. favor vase/cordial etch Chantilly	\$28.00

CLEAR

#3104 5 oz. tall hock (12) set	150.00
#3797/67 Square 4" candlesticks, pair	\$20.00
#3797 Square 10" oval bowl	\$25.00
#3797/151 Square 3 1/2" ashtray (2) each	\$10.00
#3797/120 Square 2 part 6" relish	\$12.00
#104 Mt. Vernon 12" celery & relish	\$25.00
#400 3 oz. cocktail with ball bottom (6) set	\$75.00
#400 14 oz. tumbler with ball bottom (5) set	\$75.00
Dolphin candlesticks, Mt. Vernon base, pr	110.00

COLORS

#1066 Pink 3 oz. low cocktails, clear stem & foot (6)	\$90.00
#3103 Clear 6 oz. low sherbets, stem only Carmen (8)	100.00
#647 Lt. Emerald 2 lite keyhole decagon sticks, pair	\$75.00
#638 Amber 3 lite keyhole decagon sticks, pair	\$75.00
#3500/79 Amethyst 3" basket	\$60.00
#15 Helio 8" bowl with gold floral border	\$40.00
#94 Mulberry sweet pea vase with heavy gold border	\$75.00
#627 Amber 4" candlesticks, pair	\$20.00
#345 Amber Caprice 5" vase with polished top	\$80.00
#1040 Royal Blue 3" swan, signed	\$90.00
#2971 Eleanor Blue mayo ladle	\$40.00
Moonlight Blue Caprice #38 cig. box & 4 #32 ashtrays	\$75.00
#57 Moonlight Bl. Everglades 15" 3 toed sandwich plate	100.00

~ GLASS MARKETPLACE ~

Classifieds

WANTED: Hard to find Rose Point, Rose Point #3106 stems, Nude stems, and novelty items. Write price and description. **Nancy and Jim Finley, 711 West Broadway, Sedalia, MO 65301. Phone 816-826-5032 or 827-0101.**

WANTED: #2800 Community Crystal Basin, 15 1/2" in diameter. Pictured on page 107 of Welker Reprint Book One. **Bud Walker, (609)-965-2413.**

WANTED: Cambridge Arms Accessory Pieces. Vases #2355 any size, Peg Nappy #1537, and bobeches #27. **Jody Stacken, 3022 Quail Creek Dr, Topeka KS 66614. (913) 272-7118**

WANTED: 6 small size, clear glass, Cambridge Glass Company Star Candlesticks. Please write to **Norma Spong, 106 Kenwood Ct., Thief River Falls, MN 56701**

WANTED: Cambridge Bridge Hounds (Pencil Dogs) - Interested in all colors (except amber, amethyst, crown tuscan, forest green, emerald, ebony, mocha, smoke, and tahoe blue). Contact **Lorraine Weinman, 5526 Fullview Hts., Athens, OH 45701, (614) 594-3305**

FOR SALE: Crystal Apple Blossom cup & saucers, plates, stemware and more. Also few pieces in the following patterns Chantilly, Gloria, Gadroon, Wildflower, Caprice, Apple Blossom colors. SASE for list. **Dana Stephens, 45 Windsor Dr., Belleville, IL 62223.**

The **DAZE** Inc.

SPECIAL OFFER
to NCC friends
\$2.00 OFF
the 1 year subscription price
when on this form or copy of it.

The Original National monthly newspaper dedicated to the buying, selling and collecting of colored glassware and china including Depression Glass and the Elegant Glass (Cambridge, Heisey, Fostoria, etc.) We educate and inform you each month with feature articles by top notch columnists, readers "finds", club happenings, show news and a multitude of ads. Find those missing pieces to your American-made glass, china and pottery collection. Can't identify it? Perhaps we can help "keep up with what's happening" with a subscription to the DAZE. Buy, sell or trade from the convenience of your easy chair.

Name _____
Street _____
City _____
State _____ Zip _____
[] 1 year \$21.00 [] 2 years \$40.00 [] \$2.00 Single Copy
Subscription Hot Line: 1-800- 336-9927
Exp. Date _____ Card No. _____
Signature _____

Orders to:

The Daze, Inc., Box 57, Otisville, MI 48463

Please allow 30 days for your first issue - Canadian Subscribers, add \$1.00 per year and subscribe by charge card only! This Special Offer may not be combined with any other special offer.

Offer Expires December 31, 1995

WE CLEAN CLOUDY GLASS!

** SATISFACTION GUARANTEED **

YES, IT IS TRUE THAT WE REALLY CAN RESTORE THE INTERIOR OF YOUR CRUET, VASE, DECANTER AND MOST OTHER INTERNALLY ETCHED ITEMS BACK TO NEAR ORIGINAL CONDITION!

WE DO NOT OIL, WAX OR COVER UP THE SICKNESS IN ANY WAY! WE ACTUALLY REMOVE IT.

NO ITEMS ARE TOO SICK TO CLEAN! IF WE CANNOT CLEAN YOUR ITEM TO MEET YOUR SATISFACTION, THE CLEANING IS FREE!

WE ARE SO CONFIDENT IN OUR SERVICE THAT WE ASK THAT YOU SEND NO MONEY. WHEN WE RETURN YOUR ITEM A BILL WILL BE ENCLOSED FOR THE POSTAGE & CLEANING. IF YOU ARE HAPPY, PLEASE SEND PAYMENT; IF NOT, RETURN THE BILL MARKED "NOT SATISFIED".

PLEASE ALLOW 6-8 WEEKS FOR REDELIVERY OF MOST ITEMS. ALL GLASS IS HANDLED AND CLEANED AT YOUR RISK. SOME VERY CLOUDY ITEMS MAY TAKE SEVERAL ADDITIONAL WEEKS.

CRUET	\$20.00	COCKTAIL SHAKER	\$30.00
COLOGNE	\$20.00	SALT SHAKER (SINGLE)	\$15.00
WATER BOTTLE	\$30.00	SALT SHAKER (PAIR)	\$25.00
DECANTER	\$30.00	CRUSHED FRUIT JAR	\$30.00
VASES (UNDER 12 IN.)	\$25.00	LAVENDER JAR	\$20-30.00

ALL OTHERS WRITE FOR QUOTE

SHIP TO: CARLISLE & ASSOCIATES
28220 LAMONG ROAD, DEPT. C
SHERIDAN IN 46069
(317) 758-5767 AFTER 6:00 P.M.

LENORA McNABB
PO BOX 80
ELKLAND MO 65644
417-329-5008 P & I EXTRA

#3011 NUDE STEMS CARMEN

Ash Tray	\$275.00
Cigarette Box (short stem)	\$350.00
Cigarette Box (tall stem)	\$425.00
Cupped Comport (short stem)	\$145.00
Cupped Comport (tall stem)	\$135.00
Flared Comport	\$135.00
Mint Dish	\$550.00
Bud Vase	\$550.00
Ivy Ball (2)	\$175.00
Pair Candlesticks W/Carmen Bobeches & Crystal Prisms (some no show damage on bobeches)	\$650.00

ALL CLEAR

Cigarette Holder (ash tray foot)	\$400.00
----------------------------------	----------

ROYAL BLUE

Table Goblet	\$175.00
Saucer Champagne	\$150.00
Claret	\$125.00
Brandy	\$125.00

COCKTAILS

Carmen (frosted stem & foot)	\$125.00
Emerald Green (2)	\$100.00
Forest Green	\$100.00
Amethyst	\$100.00
C.T. w/gold (tiny burst bub)	\$65.00
Clear Optic (3)	\$75.00
Flared Comport - Green	\$135.00
SS Comport - Clear (double extend)	\$90.00
Brandy - Amber	\$100.00
Saucer Champagne - Clear- (optic)	\$100.00

CRYSTAL CAPRICE

#400 Footed Goblet	\$125.00
1/4 lb. Butter (very slight roughness on bottom of lid)	\$150.00
#69 Candlestick	\$100.00
#31 2 piece Cake Salver	\$175.00
#103 Relish	\$125.00
#125 Relish (plain or pattern)	\$60.00
#300 2 1/2 oz. Ftd. Tumbler (6)	\$55.00
5 oz. Ftd. Tumbler (12)	\$15.00
10 oz. Ftd. Tumbler (12)	\$15.00
12 oz Ftd. Tumbler (4)	\$15.00
#310 12 oz. Ice Tea (12)	\$17.50
10 oz. Table Tumbler (12)	\$17.50
7 oz. Old fashioned (12)	\$30.00
5 oz. Fruit Juice (12)	\$15.00

VASES - CAPRICE

#250 Crystal	\$75.00
#251 Crystal (very sl cloudy)	\$50.00
#253 Crystal	\$115.00

CAPRICE VASES - GROUND TOP UNLESS NOTED

#337 4 1/2" Royal Blue	\$65.00
Milk Glass	\$50.00

#338 6 1/2" Moonlight Blue	\$110.00
#339 8 1/2" Amber	\$115.00
Amethyst	\$115.00
#341 4 1/2" Crystal (ruffle)	\$40.00
Green	\$50.00
Amber	\$50.00
#343 8 1/2" Amethyst	\$115.00
Green	\$115.00
#344 4 1/2" Milk Glass	\$50.00
#346 7 1/2" Moonlight Blue (ruffle)	\$175.00
#232 5" Ivy Bowl - Crystal	\$40.00
#236 8" Rose Bowl w/Block	\$125.00

MISCELLANEOUS

Crown Tuscan Flying Nude Bowl	\$150.00
8 1/2" Draped Lady - Amber	\$150.00
#1137 Blue Jay - Crystal	\$185.00
#1636 Pegged Blue Jay - Crystal	\$115.00
or with #510 Ball Candle	\$125.00
#1138 Sea Gull - Crystal	\$55.00
8 1/2" low ftd. comport - Rubina	\$85.00
#3400/152 Crystal Doulton Pitcher w/ Royal Blue handle & 6 matching steins (1 has cr below handle)	\$250.00

BOOKENDS PAIR

Eagle - Crystal	\$165.00
Scotty - Crystal	\$140.00
Ebon (club)	\$50.00
Pouter Pigeon - Crystal	\$155.00



**Where to Find Cambridge
Is Now Crystal Clear.**

If you're searching for that one elusive piece of Cambridge Crystal, call Replacements, Ltd. With close to 300 different patterns of Cambridge in stock, chances are very good that we can help.

With over 3,000,000 total pieces in over 58,000 patterns, Replacements, Ltd. is the largest buyer and seller of obsolete, inactive and active china, crystal and flatware in the world. So if you're looking to buy or sell Cambridge Crystal, call us. We're happy to help.

REPLACEMENTS, LTD.

China, Crystal & Flatware (obsolete, inactive & active)

1089 Knox Road, P.O. Box 26029, Dept. CB, Greensboro, NC 27420

**Call Toll Free Daily, including Saturday
and Sunday, 8 am - 10 pm EST**

**1-800-REPLACE
(1-800-737-5223)**

FIGURE STEM LINE (from page 3)

Two additional listings in the September 1950 price list offered the cocktail with a Gold Krystol bowl with Crown Tuscan stem and foot, and with a Crystal bowl and foot with an Ebony stem.

By October 1953, production of No. 3011 stemware was limited to the cocktail and the brandy. Amber, Amethyst, dark Emerald and Mandarin Gold cocktails were being produced and sold individually or in eight piece sets, consisting of two of each color.

The reopen period saw a resurgence of color in what as then called the "Lady Figure Line." Both the March and October 1956 price lists offered the cocktail in Carmen, Dark Emerald, Smoke, Pink, Mandarin Gold, Moonlight Blue, Pistachio, Amber and Amethyst. Crackle nudes in the colors of Smoke, Pink, Mandarin Gold, Moonlight Blue and Pistachio date to 1956.

The final Cambridge price list, dated 1958, offered

the nude cocktail in just three colors, Amber, Amethyst and Carmen, all with Crystal stem and foot.

For additional information on the No. 3011/9 cocktail as well as all No. 3011 stemware, the interested reader is referred to "Cambridge Stemware" by this author and available through NCC, Inc.

Bogart's Bed & Breakfast

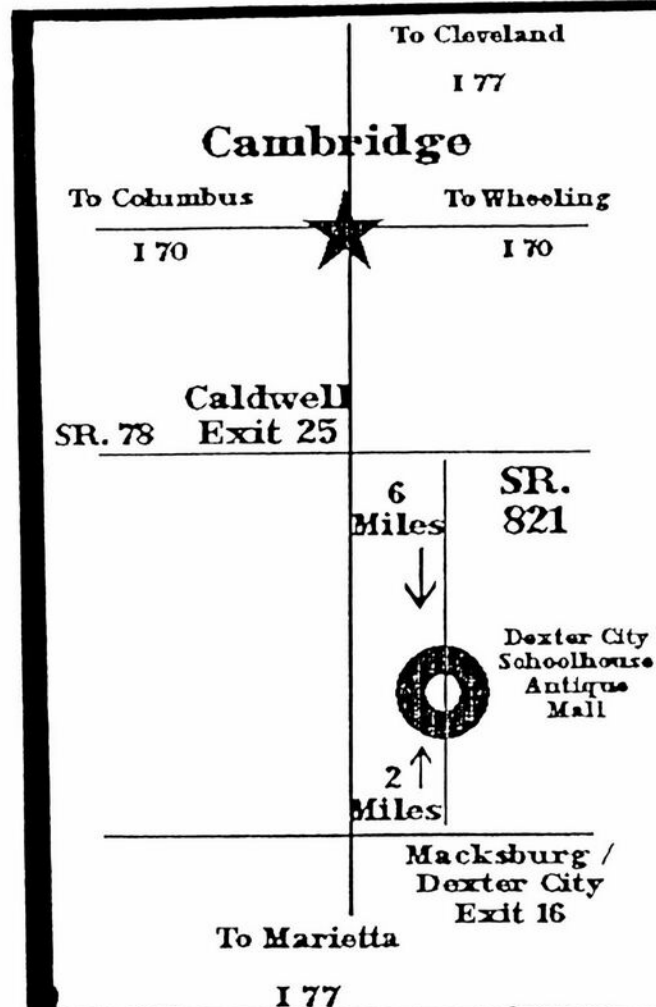
62 W. Main Street, New Concord
New Concord lodging in 1830 Federal
Style home, decorated with
antiques throughout.



Bogart's Antiques

7527 E. Pike, Norwich OH
Quality Antiques Bought & Sold

OWNERS: Jack & Sharon Bogart
872-3514 or 826-7439



THE
DEXTER CITY ANTIQUE MALL
WELCOMES

THE
1985 NATIONAL CAMBRIDGE GLASS
CONVENTIONEERS!

IN APPRECIATION FOR YOUR PREVIOUS
SUPPORT
WE WILL BE HOLDING AN
OPEN HOUSE
ON
FRIDAY, JUNE 23, 1985
FROM
8:30 A.M. TO 6:00 P.M.

WE HAVE REQUESTED OUR DEALERS
BE
PRESENT TO ENHANCE YOUR SHOPPING
PLEASURE.

REFRESHMENTS WILL BE SERVED...
(OPENING EARLY FOR YOUR
CONVENIENCE.)

THANK YOU FOR YOUR
CONTINUED PATRONAGE.

DEALERS



DIRECTORY

NOTE: When writing to the Dealers listed here, please enclose a SASE!

<p>DAUGHERTY'S ANTIQUES Jerry and Shirley Antiques and Collectibles • Mostly Glass Shows & Mail Orders 2515 Cheshire No. 402-423-7426 Evenings Lincoln NE 68512</p>	<p>"HAPPINESS IS" Buddy and Kathy Stultz 3106 Warren Court, Glen Allen, VA 23060 804-672-8102 Specializing in American Made Glass We Buy & Sell, Shows & Mail Order</p>	<p>THE MUTED SWAN ANTIQUES 5486 Peachtree Rd. Chamblee, GA 30341 Heart of Chamblee Antique Row Specializing in Cambridge, Heisey and Fostoria Bill & Pat Miller 404-451-7620</p>
<p>Milbra's Crystal Buy & Sell Replacement and Matching Specializing in: Cambridge Milbra Long (817) 645-6066 Fostoria Emily Seate (817) 294-9837 Heisey PO Box 363, Rio Vista, TX 76093 and others</p>	<p>BUY-SELL (513) 390-3617 Taste of Honey Glassware - Collectibles Clarke West 4888 Brannan Dr. E. Carole West Springfield, OH 45502</p>	<p>ARMORY ANTIQUES 168 West Main Street Plain City, OH 43064 QUALITY THINGS Cambridge, Heisey, China, Silver, Furniture Mon-Sat 10-5 VISA/MC 614-873-4890</p>
<p>THE GLASS URN 456 West Main Street, Suite G Mesa, AZ 85201 602-833-2702 Mail Order Shows Open Shop CAMBRIDGE, FOSTORIA, HEISEY, ETC.</p>	<p>ANTIQUES ON THE MALL SPECIALIZING IN CAMBRIDGE GLASS Bogart's - Bldg #3 - Norwich, OH Virginia Bennett 614-432-4483 64183 Warne Drive, Cambridge, OH 43725</p>	<p>GATEWAY ANTIQUE MALL, INC. JUST NW OF MINNEAPOLIS-ST PAUL, MN Next to Super 8 in Rogers, MN (I-94/101 Intersection) 85 Dealers 7 Days, 10-6 612-428-8286 ELAINE STORCK, DIRECTOR</p>
<p>ETTELMAN'S DISCONTINUED CHINA & CRYSTAL Cambridge a Speciality P.O. Box 6491-CB Corpus Christi TX 78466 Phone 512-888-8391 Include S.A.S.E.</p>	<p>D & D ANTIQUES Columbus, Ohio Dick Slifko SHOWS ONLY</p>	<p>RONI SIONAKIDES 6565 W. Herbison Rd. DeWitt, MI 48820 517-669-5981 Fostoria, Tiffin, Duncan, Cambridge</p>
<p>THE GLASS CUPBOARD P. O. Box 652 West End, North Carolina 27376 Marcia Ellis Cambridge, Duncan, Heisey 910-673-2884 Shows, Mail Order</p>	<p>JUDY'S ANTIQUES Judy Bennett 422 S. Ninth Street (Corner of Jefferson) Cambridge, Ohio 43725 BUYING Ph.614-432-5855 SELLING CAMBRIDGE GLASS MY SPECIALTY</p>	<p>MCKENZIE'S ANTIQUES & COLLECTIBLES 14700 Detroit Avenue Lakewood, Ohio 44107 (216) 521-2652 (216) 221-9862 (216) 348-3127</p>
<p>ELEGANT GLASSWARE Barbara & Cindy Brock Rt. 1, Box 66AC, Callands, VA 24530 804-724-6762 Cambridge - Heisey - Duncan - Fostoria</p>	<p>GREEN ACRES FARM 2678 Hazelton Etna Rd., Pataskala, OH 43062 (State Route 310 North) Sat & Sun 1-7 PM 614-927-1882 Antiques, Crystal Glass and Collectibles</p>	<p>CRYSTAL LADY 1817 Vinton St., Omaha, NE 68108 Joann D. Hagerly Bus. 402-341-0643 Res. 402-391-6730 Specializing in Elegant Glass & Collectibles</p>
<p>ASK Specializing in Cambridge. Wide variety. Booth #14 in the Antique Mall of Boswell 90 Miles south Chicago, right on U.S. 41. 7 days a week 10-5, except Sun. 12-5 (317) 869-5525</p>	<p>FLORENCE SOLITO 54 Old Stafford Rd, Tolland CT 06084 Stock All Elegant Glassware Mail Order Since 1978 Send Wants 203-872-3294 Satisfaction Guaranteed</p>	<p>YOU CAN ADVERTISE YOUR ANTIQUE SHOP HERE!</p>
<p>MICHAEL KRUMME Cambridge • Heisey • Fostoria • Duncan Miller • Paden City New Martinsville • Fenton • Tiffin • Imperial • Morgantown I search - Send detailed want list - all are kept on file PO Box 5542 Santa Monica, CA 90409</p>	<p>REMEMBRANCES 7597 Daphne Dr., No. Syracuse NY 13212 Shirley S. Ladouceur 315-458-5297 ANTIQUES and COLLECTIBLES MAIL ORDER SHOWS APPOINTMENTS</p>	<p>MARGARET LANE ANTIQUES 2 E. Main St., New Concord, OH 43762 Lynn Welker 614-826-7414 Cambridge Glass Matching Service Hours Mon-Fri 10-12AM, 1-5PM or by Appointment</p>
<p>GLASS RESTORATION BRILLIANT DON & LYNNE CRYSTAL WORMLAND ELEGANT MT. CLEMENS, MICH DEPRESSION 810-468-3519</p>	<p>YOU CAN ADVERTISE YOUR ANTIQUE SHOP HERE!</p>	<p>YOU CAN ADVERTISE YOUR ANTIQUE SHOP HERE!</p>

Great Northeast Depression Era Glass and Pottery Show

Westchester County Center, White Plains, N.Y.

August 12 and 13, 1995 10 AM to 5 PM

Welcome to what is destined to be known among the finest depression glass and pottery shows in the nation. The nation's greatest metropolitan area finally hosts a show of national caliber. Over 50 renowned dealers from around the country will bring the best merchandise. The widest variety, from A to Z to Elegant to China. The Rarest of the Rare. Among those scheduled to appear:

Cliff and Lydia McNeil	T.P. Antiques	Kevin Kiley	Dennis Bialek
Lorrie Kitchen	Rusty Mellin	Two Hats Antiques	No Horse Antiques
Florence Solito	Neighbor's Antiques	Art & Shirley Moore	Fran Jay
Glenn Hasbrouck	Linda's Caravan	Byron Canine	Julie Sferrazza
Margaret & Kenn Whitmyer	Kent Washburn	Happiness Is	Dr. Bob's Antiques
Kathy & Larry Thompson	Rainbow Antiques	Kay and Joe Feher	Debbie's Glass
Charlie & Loretta Weeks	Paula Ockner	Leasure's Treasures	Gloria Burkos
Kathy & Shelby Nussbaum	John Guglielmo	Hazel Hazen	Donna Mageau

This is not a show you will browse in an hour or two. Plan to spend the day. You will be delighted with scope and quality of the merchandise. It's over 25,000 square feet! You will have a chance to meet the finest dealers in the country and enhance your learning of depression glass and pottery. Plus, many local and national clubs will be on hand to answer your questions. The show is presented in association with The National Cambridge Collectors Inc. White Plains is centrally located just 20 miles north of New York City. Show promoters: Joe Solito (203) 872-3294 and Rick Jones (914) 631-1656. For directions, contact the County Center at 914-285-4050 or fax a request 914-631-8278. *General Admission \$6.00, NCC members with their card or this ad, just \$5.00.*

Quick, close your eyes. What's the best glass show in the country? Coming August 12-13.

A Poem by Paul White

In days before long journeys
 Became so commonplace,
 A horse and buggy travel
 Took days. Now hours race.
 Then rivers served as highways -
 Canals joined them to lakes
 And passengers on railroads
 Forsook roads wagons take.
 Henry Ford and Brothers Wright
 Changed the human plan
 And all and all we've left behind
 Leisure, and the life it scanned.
 Somewhere, back when we were young
 We lost the view sublime.
 Now we only hunt for cloverleaves
 And calculate saving time.

Membership Renewal Notice
This is your last issue of the CRYSTAL BALL, if the date on your address label reads 6-95.
Please renew now!

National Cambridge Collectors, Inc.
PO Box 416
Cambridge, Ohio 43725-0416

Forwarding and Return
Postage Guaranteed

Please deliver promptly, dated material.
FIRST CLASS MAIL