



# Cambridge Crystal Ball

Published monthly by National Cambridge Collectors, Inc.  
to encourage and report the discovery of the elegant and boundless product of the  
Cambridge Glass Company of Cambridge, Ohio

Issue No. 279

July 1996

## President's Message

# Poised to Move Forward Positively

As I write this column in early June, I get set to wrap up this year as president of this organization. It has been an honor and privilege to work with many talented people to help advance the cause of this club. During the past twelve months, we have had many challenges to deal with so that we can positively set the stage for a bright future.

I'm particularly optimistic as I sit here and ponder our march to Cambridge 2000. Any organization staffed largely with volunteers is heavily reliant on the caring contributions of folks who offer their help simply for the love of glass and their desire to have a strong commitment to preservation. It has really been quite remarkable to view this phenomenon.

In the past year, we've had to deal with ongoing transitions in several key positions and with a few nagging problem areas. Many of these now seem under much better control and we can now turn our attention to forward thinking and planning and spend less energy in reacting to problem areas. I hope I'm not deluding myself but I think there is just cause for this optimism.

## **Corresponding Secretary/Treasurer's Office**

In last month's column I mentioned J.D. Hanes' transition. I'm pleased to announce that Charles Upton has agreed to become our new corresponding secretary. This means he will be the one retrieving club mail at the post office box and either answering it directly or referring it to the proper person who can best respond.

Further, we will have a new computer software system that will better permit us to track inquiries and traffic them more rapidly. For this, we have Dennis Snyder to thank.

*(Continued on page 3)*

## ***Inside This Issue:***

Rock Crystal Promotion

Friendly New Faces at NCC Museum

Importance of Clubs and Museums

A Piece of A.J. Bennett History

Artistry of the #1207 Leaf Bowl

## Cambridge Crystal Ball

Official publication of National Cambridge Collectors Inc., a non-profit corporation with tax exempt status. Published once a month for the benefit of its members. All rights reserved; reproduction in whole or in part without written permission of NCC and the author is prohibited.

Membership is available for individual members at \$17.00 per year and an additional \$3.00 for associate members (12 years of age and older, residing in the same household). Of the master member dues, \$12.00 is credited to a one-year subscription to the *Crystal Ball*. All members have voting rights, but only one *Crystal Ball* per household. **Effective 1/1/96, multi-year memberships are available: 2 years for \$33.00, 3 years for \$49.00.** Back issues of the *Crystal Ball* are available for \$1.00 each or 12 issues for \$10.00. Complete sets for \$79.00.

### 1995-1996

#### OFFICERS AND COMMITTEE CHAIRPERSONS

President .....	Richard D. Jones
Vice President .....	Mark A. Nye
Secretary .....	Bud Walker
Treasurer .....	Charles Upton
Sergeant-at-Arms .....	Tarzan Deel
Acquisitions .....	Joe Andrecjak
Budget & Finance .....	Mark A. Nye
By-Laws .....	Charles Upton
Long-Range Planning .....	Tarzan Deel
Membership .....	Jeff Ross
Museum Expansion/Relocation .....	Willard Kolb
Museum Facilities .....	Carl Beynon, Joe Miller
Museum Interior .....	J.D. Hanes
Non-Glass Items .....	Tarzan Deel
Nominating .....	Joy McFadden
Program .....	Bill Hagerty
Projects .....	Tarzan Deel
Publications .....	Mark A. Nye
Publicity .....	Cynthia A. Arent
Study Group Advisor .....	Marybelle Moorehead
1996 Convention .....	Mark A. Nye, Bud Walker
1996 Auction .....	Lynn M. Welker
1996 Antique Show ....	Mary Beth Hackett, Joy McFadden
1996 Flea Market .....	Mike Arent
<i>Crystal Ball</i> Editor .....	Lorraine Weinman

National Cambridge Collectors Inc. owns and operates the **Museum of Cambridge Glass** at 9931 East Pike Road, Cambridge, Ohio. Open April through October 9AM-4PM Wednesday through Saturday and Noon-4PM on Sunday. March open Friday-Sunday. Closed November-February, Easter, July 4th.

## ADVERTISING RATES

### Display Rates (camera ready ads preferred)

<u>Unit</u>	<u>Members</u>	<u>Non-Members</u>
Full Page	\$45.00	\$60.00
3/4 Page	\$35.00	\$50.00
1/2 Page	\$25.00	\$35.00
1/4 Page	\$15.00	\$25.00
1/8 Page	\$10.00	\$15.00

### Classified Rates

10 cents a word \$2.00 minimum

Abbreviations and initials count as words. Type sizes cannot be mixed in classified ads. **Payment in full must accompany all ad copy.** Contact Editor for copy assistance.

### Dealer Directory

Six Line Maximum \$24.00 for 12 month contract

*Cambridge Crystal Ball* assumes no responsibility for items advertised and will not be responsible for errors in price, description, or other information.

**Advertising copy, letters, articles, must be received by the 5th of preceding month to be considered for publication in the next issue.**

Please address all correspondence (include SASE) to:

**National Cambridge Collectors, Inc.**  
**P.O. Box 416**  
**Cambridge, OH 43725-0416**

President Rick Jones	914-631-1656
Vice President Mark Nye	517-592-6200
Secretary Bud Walker	609-965-2413
NCC Museum: Phone and Fax	614-432-4245

**Please notify us immediately of any address change.**

Opinions or information stated in any signed article or letter printed in the *Crystal Ball* are those of the author and may not agree with National Cambridge Collectors, Inc. The Editor reserves the right to refuse and to edit any material submitted for publication to conform to the editorial style of the *Crystal Ball*. Members are encouraged to write to NCC and the *Crystal Ball* sharing their knowledge and questions!

*(President's Message - Continued from page 1)*

For several months we have written about the need to have better financial controls in place, both for budgeting and for expense tracking. Over Memorial Day weekend, Charles and I met with Dennis at the NCC Museum. He and his son, Mike, have offered to adapt a new software system for use by the club. This system will decrease our reliance on the current accounting firm and save the membership money.

For the time being, we are establishing an office of the treasurer. This will still be led by Charles Upton but by their estimate, Dennis Snyder will relieve him of more than 50% of his present workload. We will also have another member serve as an internal auditor to crosscheck all the work.

The front-end of the software will permit more efficient tracking of member correspondence (what we call transmittals), and more rapidly lead to action whether it is membership renewals, book orders, or any other cash transactions. This is all very exciting and I thank Dennis and Mike for their willingness to help the club.

To share a bit of history, Dennis helped build earlier financial systems for the club from 1981-84 and we welcome his return. For those who don't know Charles, he was the first president of NCC and returned to our board of directors two years ago. He is one of the most conscientious people I have ever met and it is a real bonus that he will have the "first" position in responding to member correspondence. In the unlikely event that he doesn't know how to answer a question, he has a great sense of who will.

### **1940 Catalog Reprint**

Another nagging problem area has been the 1940 catalog reprint. As has been well publicized, there were definite printing problems with this publication. It has led to a bad word of mouth that slowed sales. The board, just two weeks ago, approved reprinting the affected pages so that the membership can have a publication that we can be proud of and merits bearing our name.

This correction comes with added cost. We now have a lot invested in the 1940 catalog. It remains an important publication and should be a must in each collector's library. We need your help in reducing our inventory. Despite the added printing cost, we have not increased the price from the debut

\$31.45. Further, anyone who has already purchased the book will be sent replacement pages sometime this summer. The revised catalog should be available at the June Convention and will be getting increased advertising support. We need your support to help make this project a success. Given the costs, this will not be a big fundraiser for the Museum but we at least want to make sure we can fairly rapidly recover our costs and put those funds to better use to further our club goals.

### **Cambridge 2000**

Speaking of the future, you will begin to hear more and more about a project called Cambridge 2000. It is the planning process initiated by Tarzan Deel and our Long-Range Planning Committee. For the past couple months, he has been collecting results to a survey sent to a number of members soliciting their insights on a variety of areas regarding our future.

Now that our "housekeeping" is in much better shape, it is timely to set our future course. Where should this club be going come the new millennium? Your input is vital to this. Please share any thoughts you have with us by sending them to Tarzan care of the club P.O. box in Cambridge.

One of the things we have to do is build a strong endowment fund. Clarke West of Springfield has volunteered to help us put together a program for wills and bequests. This is something that is routine for colleges, universities, museums, and other charitable trusts. We, too, should have a plan. It should be easy for members and friends to remember the NCC Museum. Again, if you have any thoughts on how to help us, please drop us a line.

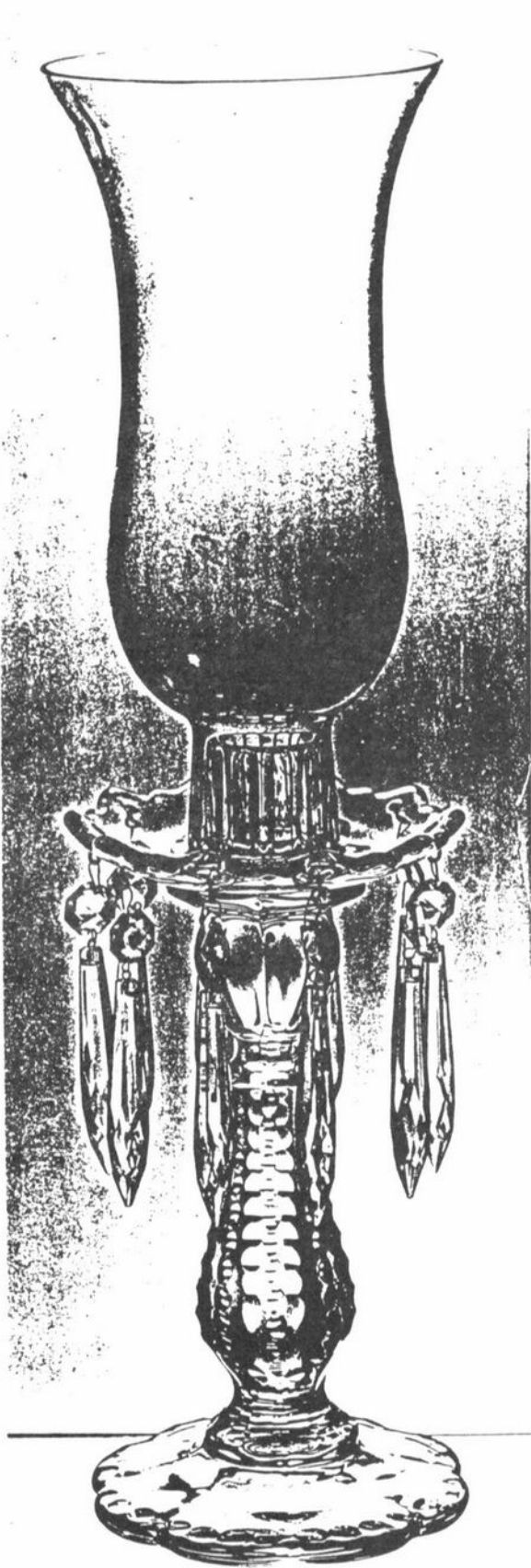
### **Miscellaneous**

We are in a good position. Some nagging problems seem to be behind us. We have a dedicated board and a growing list of member volunteers. I'm sure we can start now on building an even brighter future.

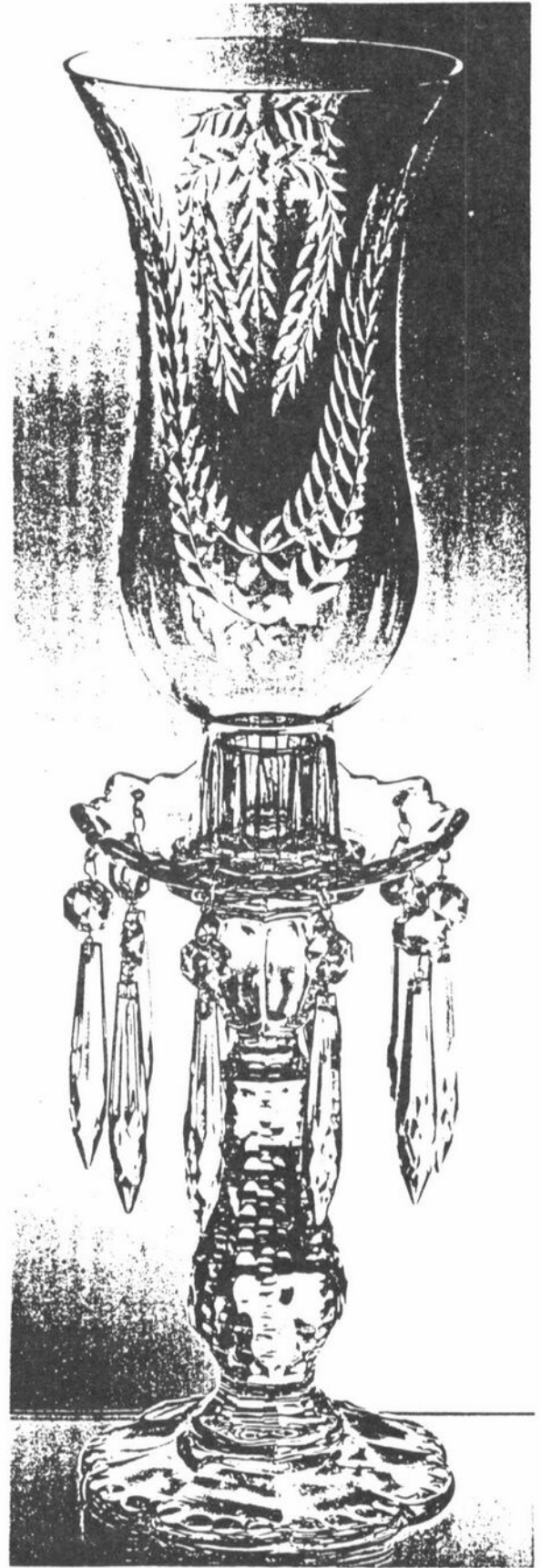
We want our newsletter to continue to be of value to our members and I'm grateful to Lorraine Weinman for doing such a good job as our editor. All of us have promised to get her articles more rapidly so we can publish closer to the first of the month and continue to meet member needs.

The future is indeed looking bright.

*Rick*



1613—17 in.  
Hurricane Lamp  
Engraved—Manhattan



1613—17 in.  
Hurricane Lamp  
Engraved—723

# Rock Crystal Promotion

by Mark Nye

Sometime during the 1950s the Cambridge Glass Co. had a special promotion sale featuring at least 11 rock crystal engravings on four different items. In conjunction with that promotion at least seven "catalog type" pages showing hurricane lamps, celery dishes, relishes and crescent salad plates were prepared and issued. It is reasonably certain these pages were not catalog pages per se. That is, they were not issued as supplements to the 1949 Cambridge catalog nor are they part of a yet undiscovered catalog. However, how and to whom they were distributed has not been determined, nor has a more precise time frame for their issuance.

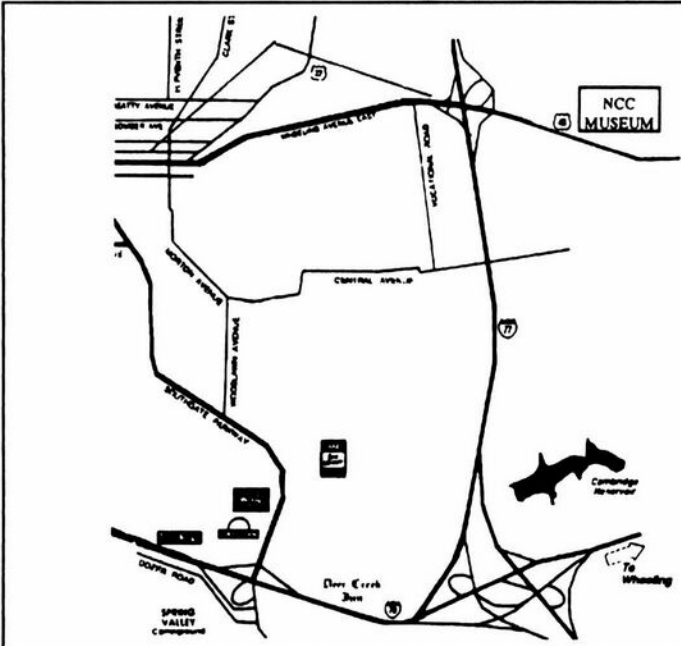
Some of the engravings were well-established patterns dating as early as the 1930s while others had been introduced during the 1940s and 1950s. No. 723, No. 919, Adonis, King Edward, Belfast, and Laurel Wreath date to before 1940. The pattern Manhattan went into production sometime between 1940 and 1949 while Lynbrook, Thistle and Harvest were probably introduced during late 1949 or early 1950. Jefferson at this time is somewhat of a mystery. However, its style indicates an introduction during the early to mid-1940s.

Engravings Nos. 723 and 919 had not remained in

the Cambridge line from the time of their introduction until these items were made. It appears these two designs were revived for this promotion. Adonis, King Edward, Belfast and Laurel Wreath do appear to have remained in the Cambridge line for most, if not all, of the time between their introduction and when these pages were issued.

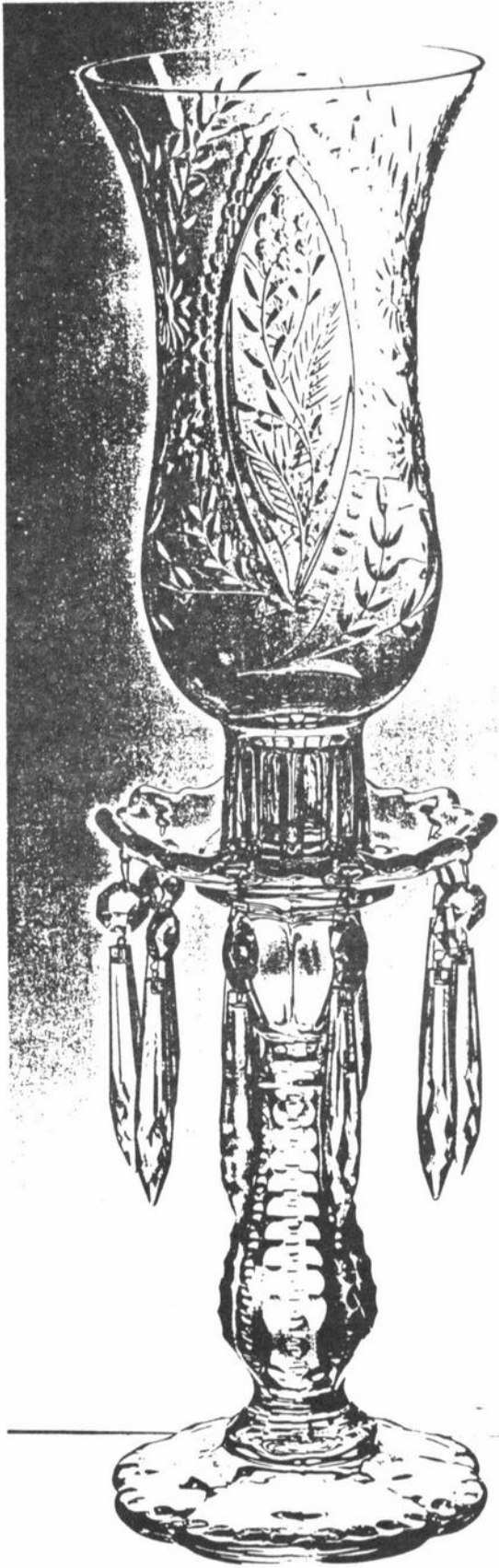
In the case of Manhattan, it is only the candlestick base that is cut. The hurricane shade is plain. As shown in the illustrations, all of the remaining candlestick bases are cut Manhattan. It is the hurricane shade that carries the listed pattern. For instance, the 1613 17-inch hurricane lamp engraved 723 has its base engraved Manhattan and the shade engraved No. 723. Whether or not they were sold this way or with a plain candlestick and engraved shade has not been determined. All have the standard Cambridge No. 19 bobèche and eight prisms.

It is doubtful a collection featuring one each of every item shown on these seven pages could be put together without much difficulty, if at all. For those who want to try and for those who just want to know what Cambridge did produce, the seven pages are reprinted here on pages 4 and 6 - 11.

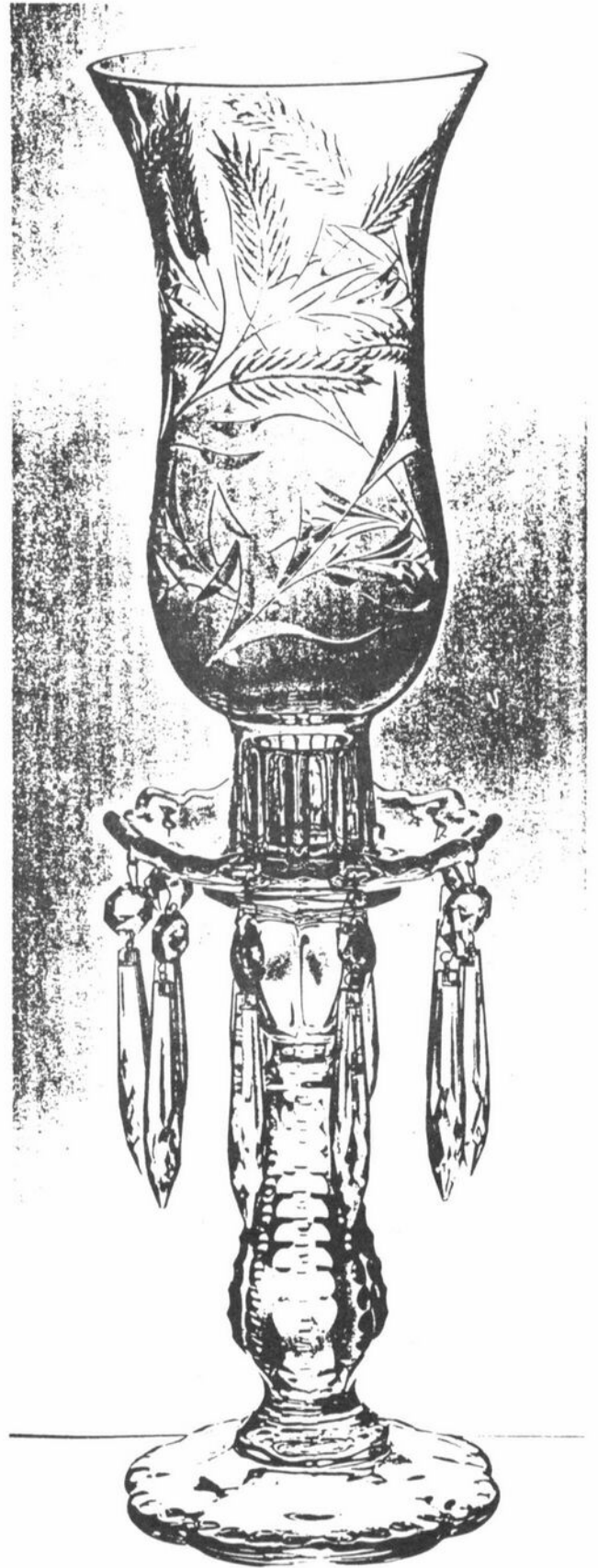


## NCC Museum of Cambridge Glass

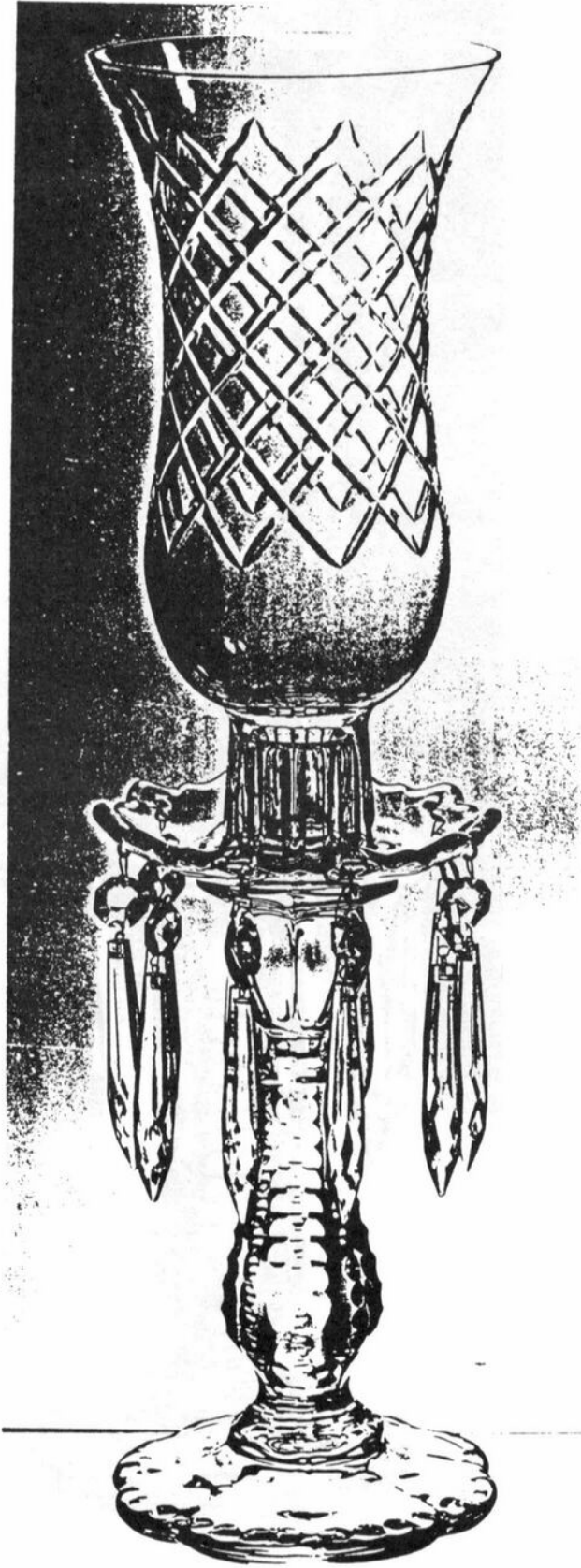
The museum is located on U.S. Route 40, one-eighth of a mile east of I-77 near Cambridge. Open April through October, 9 a.m. to 4 p.m., Wednesday through Saturday, and noon to 4 p.m. on Sunday. During March, open Friday through Sunday. Closed November through February, Easter, and July 4th. Phone: (614) 432-4245.



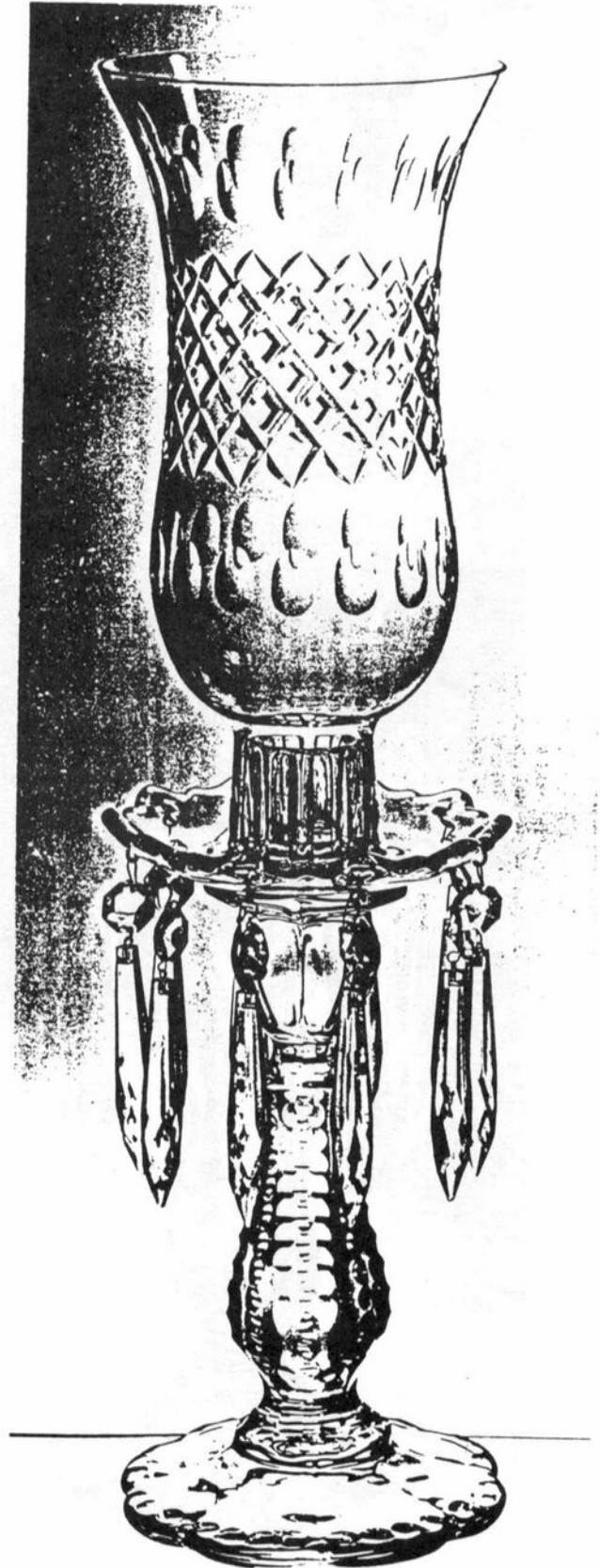
1613—17 in.  
Hurricane Lamp  
Engraved—Adonis



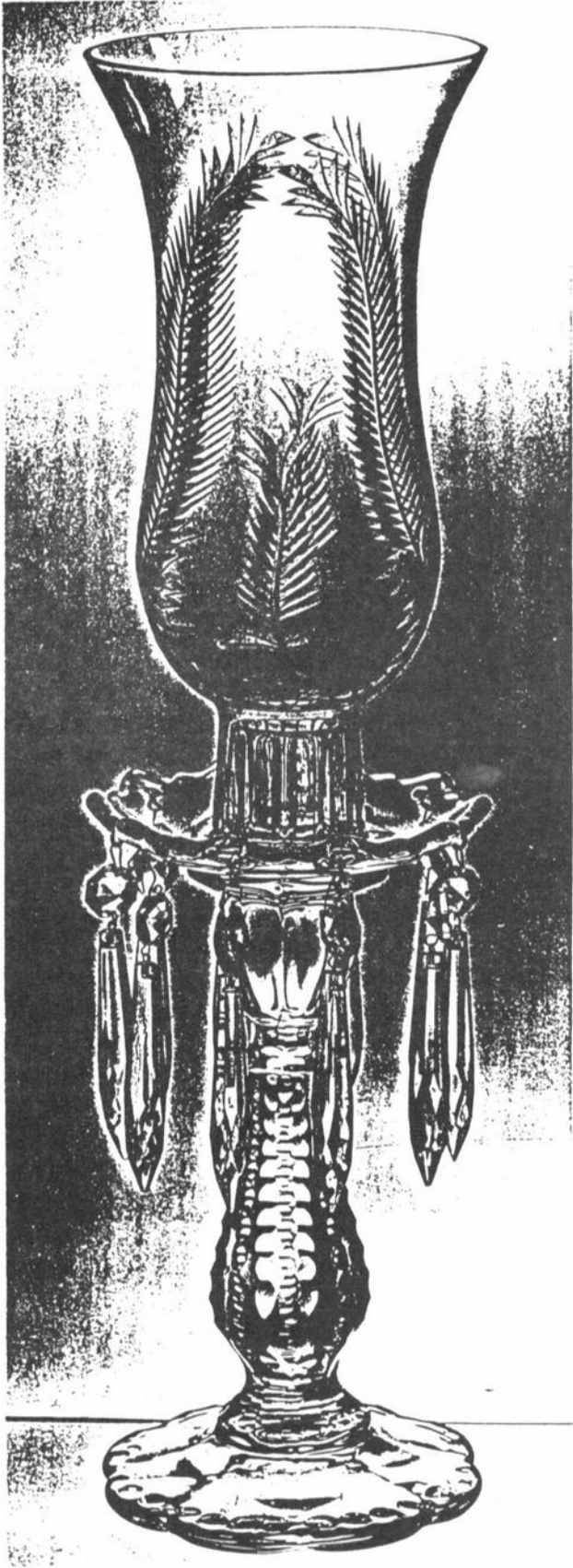
1613—17 in.  
Hurricane Lamp  
Engraved—Harvest



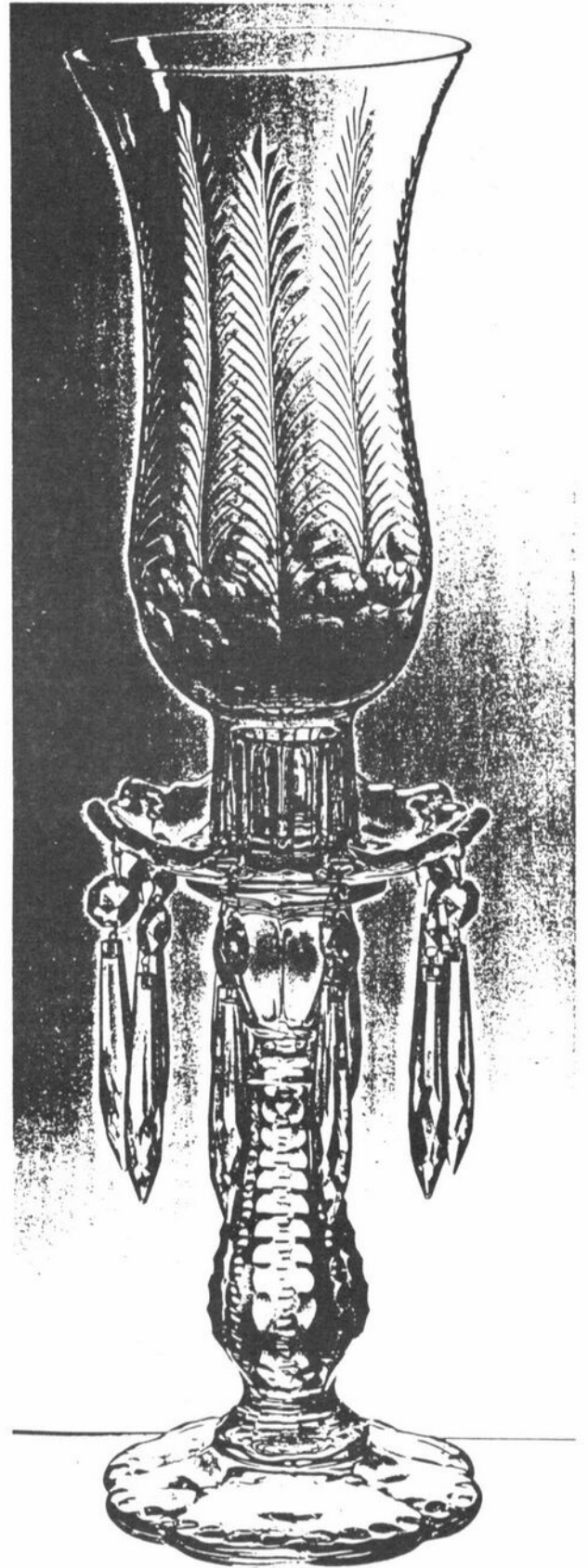
1613—17 in.  
Hurricane Lamp  
Engraved—Manor



1613—17 in.  
Hurricane Lamp  
Engraved—King Edward

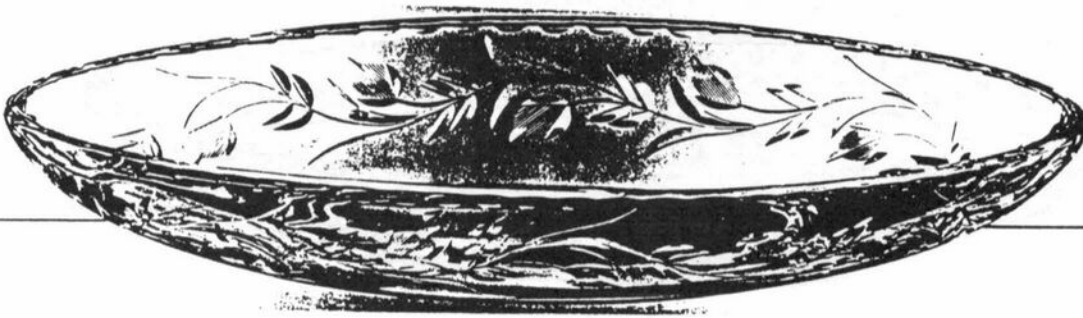


1613—17 in.  
Hurricane Lamp  
Engraved—Jefferson

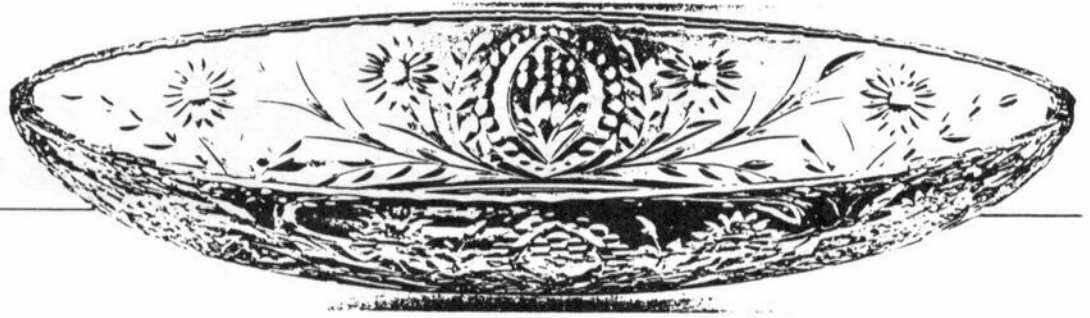


1613—17 in.  
Hurricane Lamp  
Engraved—919

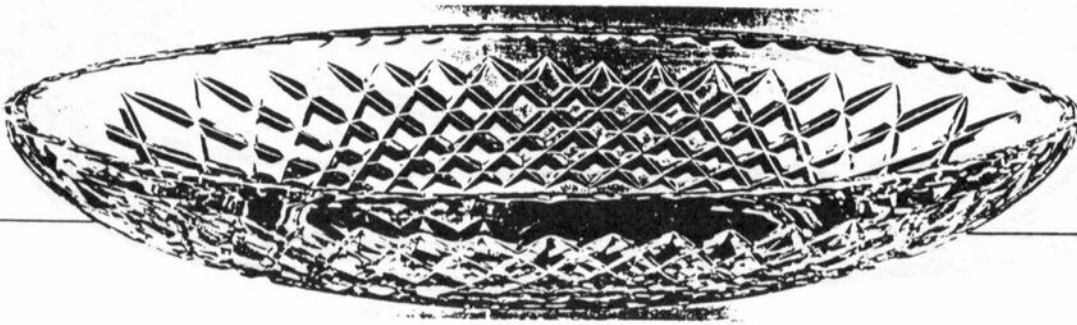




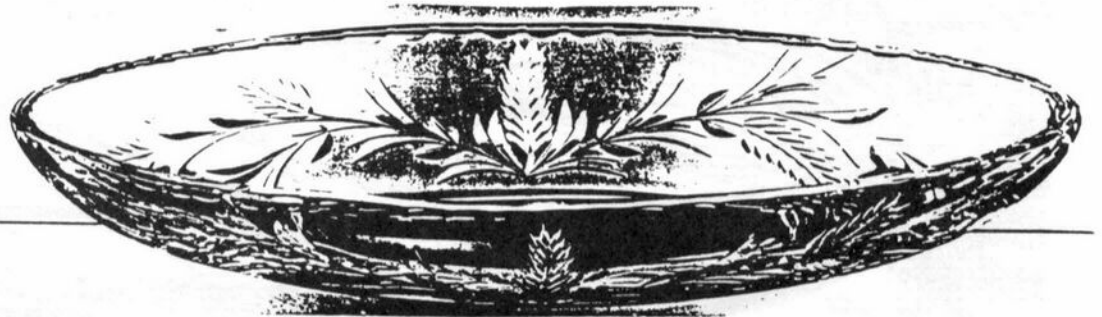
P 247—11 in. Celery  
Engraved—Lynbrook



P 247—11 in. Celery  
Engraved—Adonis



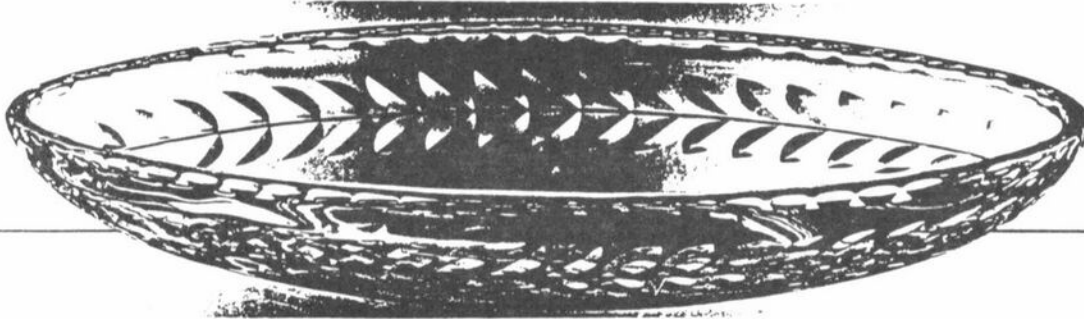
P 247—11 in. Celery  
Engraved—Belfast



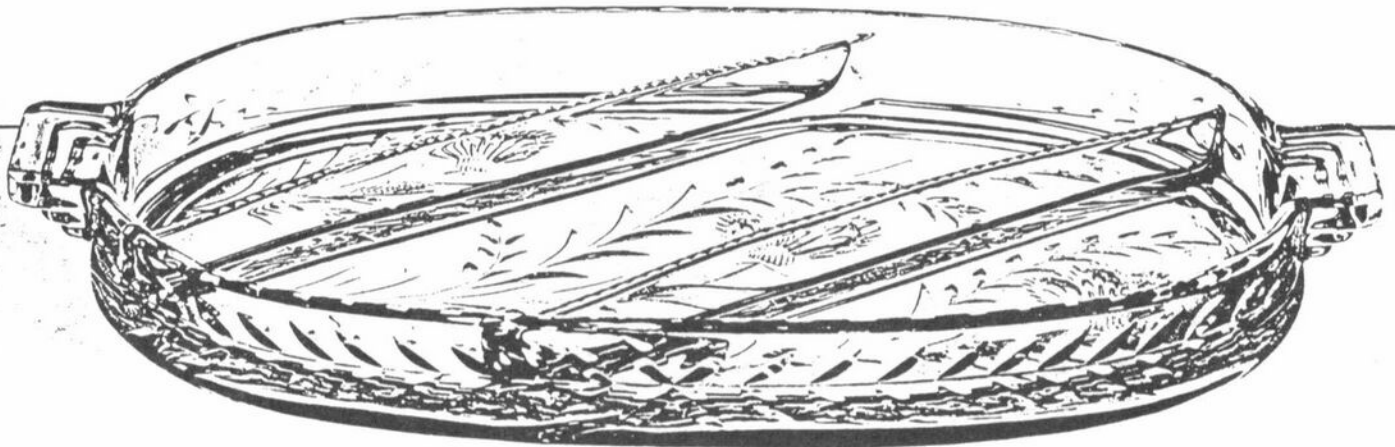
P 247—11 in. Celery  
Engraved—Harvest



P 247—11 in. Celery  
Engraved—King Edward



P 247—11 in. Celery  
Engraved—Laurel Wreath



P 215—12 in. Celery and Relish  
Engraved—Thistle



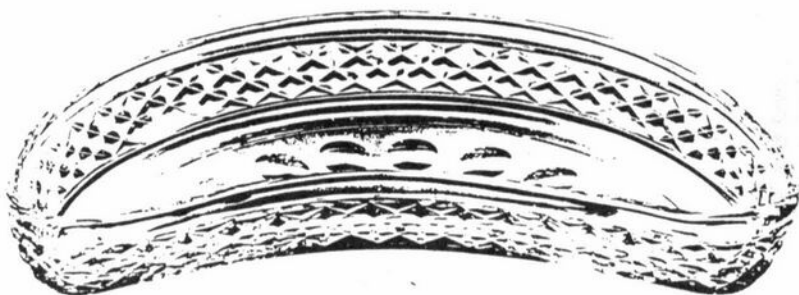
P 215—12 in. Celery and Relish  
Engraved—Harvest



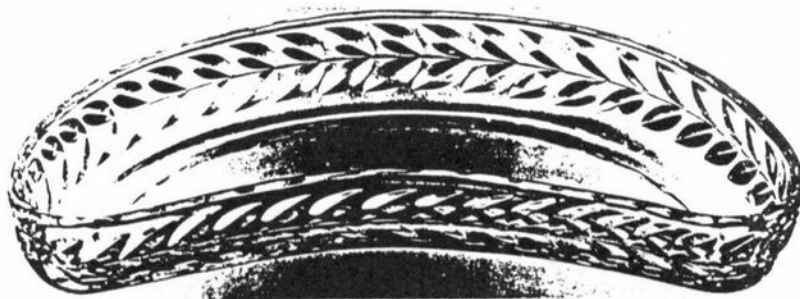
P 454—8 in.  
Crescent Salad  
Engraved—Adonis



P 454—8 in.  
Crescent Salad  
Engraved—Harvest



P 454—8 in.  
Crescent Salad  
Engraved—King Edward



P 454—8 in.  
Crescent Salad  
Engraved—Laurel Wreath



P 454—8 in.  
Crescent Salad  
Engraved—Lynbrook

# Friendly New Faces at NCC Museum

When members and visitors stop in at the NCC Museum of Cambridge Glass, they will no doubt be greeted by one of the three new ladies who are now working at the museum. These new employees are: Dorothy Golden, Donna Hagar and Betty Sivard.

A visit is well worth your time. Stop in and say hello and enjoy the many wonderful examples of Cambridge glass that the museum has to offer.



**Dorothy Golden:** Dorothy has previously been a substitute Museum employee. She was a former Cambridge Glass Company worker and is familiar with Cambridge glass. Dorothy lives in Cambridge and is a member or an officer of many groups at her church.



**Donna Hagar:** Donna also lives in Cambridge. She was an employee of the former Burgess Floral store.

## ASK NCC: LETTERS FROM MEMBERS AND FRIENDS

Editor:

I would like to offer a heartfelt Thank You to Ms. Arent for the timeliness and thoroughness of the stories presented in the major Depression Glass trade journals in publication today. It is through exemplary efforts such as Cindy's that the enthusiasm of the hobby is shared by all. Thank you, Cindy, for sharing your fine journalism on behalf of the NCC.

Sincerely,  
Squeek Rieker



**Betty Sivard:** Betty is retired from GTE. She lives in Cambridge and has an interest in learning more about Cambridge glass. Betty has attended NCC glass shows in the past.

# NATIONAL STUDY GROUP REPORTS

## Study Group #14 The Cambridge Cordials

May 18 the Cordials held their meeting at the NCC Museum. Nine members were present: Cindy and Mike Arent, Rich Bennett, Shirley and Carl Beynon, J.D. Hanes, Sharon and Joe Miller, Jeff Ross, and Lorraine Weinman.

Much of the evening was spent working in the museum and paper room. A brief business meeting followed with discussion of Convention and plans for the Former Workers Reunion. Since this was a working meeting, there was no Show and Tell scheduled. Due to Convention there will be no June meeting; next meeting will be in July to discuss and show the treasures found at the convention.

**ATTENTION STUDY GROUPS:** It is interesting to hear what you are doing at your meetings and as a group. Have any pictures you would like to share related to what you are doing? Please send your reports and/or pictures by the 5th of each month to be included in the next issue. We are anxious to hear (and see) what is happening in your area!

## Bogart's Bed & Breakfast

62 W. Main Street, New Concord  
New Concord lodging in 1830 Federal  
Style home, decorated with  
antiques throughout.



## Bogart's Antiques

7527 E. Pike, Norwich OH  
*Quality Antiques Bought & Sold*

OWNERS: Jack & Sharon Bogart  
**872-3514 or 826-7439**

## Importance of Clubs and Museums

by Bud Walker

As I have gotten more involved with glass clubs and glass museums, a disturbing thing has come to my attention. I'm finding more and more collectors who will not get involved with a club. Their excuse is that they can go out and buy a book that tells them what they need to know. They forget who did most of the research that is in those books. If it weren't for clubs and dedicated people, most of this information would have been lost. Most clubs continue discovering new information that increases our knowledge of what these glass companies made.

In reference to glass museums, I often hear that it is too far away to visit. A visit to the museum of the glass one collects is a wonderful experience, but this is not the primary reason for having a museum. The museum is to preserve examples of what a company made so that future generations are not left in the dark wondering what Heisey, Cambridge, Imperial and the other Glass Companies made.

I am trying to research the story of the Liberty Glass Works. Most of the history of this little-known company is gone forever. No one thought it was important enough to preserve. Even the people who worked there saved very little. Without a club or museum, most will never know of some of the beautiful pieces produced by this company.

I'm writing this in the hopes that it will make collectors realize the importance of clubs and museums. If we collectors do not support the clubs and museums, our source of knowledge will dry up. And without this, we will be unable to encourage young people to collect the glass that we love.

## 1996 Calendar Planning

The following are tentative dates for major club activities during 1996:

August 24	Quarterly Meeting/Picnic
November 2	Quarterly Meeting/Program

# Artistry of #1207 Leaf Bowl

The following letter came from the circular letter book of salesman Walter A. Songster, Denver, Colorado. It has been submitted by Carl Beynon to share with us.

April 26th, 1933

CIRCULAR LETTER #172:  
TO ALL AGENTS:

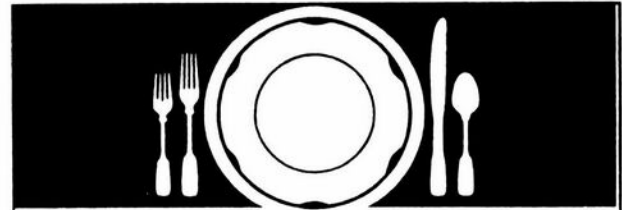
We have had so many inquiries as to how the #1207 Leaf Bowl is made that we are writing you in regard to this.

This article as you no doubt know is made in a many jointed mold with rather complicated bottom plate and plunger. The secret of the beauty and gracefulness of this bowl of course is due to the skill of our mold makers in constructing the mold and our workmen's artistry in working the article in hot glass. Mold must of necessity be made so that it will release or relieve, allowing the glass to come out without checking and cracking. It was a very intricate and expensive mold to produce and aside from this, the bowl after it is pressed is again warmed in on both sides to give it polish and in order that the leaves can be shaped up, as shown by the finished product.

On account of the varied thickness and many parts to this bowl after the usual annealing process it is then re-annealed in an oven.

We think it would be well for you to stress the real artistry displayed in this bowl, as it is unquestionably an article of merit.

THE CAMBRIDGE GLASS COMPANY  
H.A. Lovelady



## Our Stems Don't Have Thorns

As the world's largest supplier of discontinued china, crystal and flatware, Replacements, Ltd. has 54,000 different patterns and 2.1 million pieces.

We have Rosepoint, Rambling Rose, Midnight Rose, Rosebud, Rosechintz. . . .  
And these stems don't have thorns.

## REPLACEMENTS, LTD.

1089 Knox Road • PO Box 26029  
Greensboro, NC 27420 • Dept CB

Everyday 8am-10pm  
Call 1-800-562-4462

The **DAZE** Inc.

**SPECIAL OFFER**  
to NCC friends  
**\$2.00 OFF**  
the 1 year subscription price  
when on this form or copy of it.

The Original National monthly newspaper dedicated to the buying, selling and collecting of American made glassware china, and pottery from this century. We educate and inform you each month with feature articles by top notch writers, readers letters, club happenings, reproduction news, show reports and there are hundreds of dealers to help you fill in the missing pieces of your collection. "Keep up with what's happening" . . . Subscribe today!

Name \_\_\_\_\_  
Street \_\_\_\_\_  
City \_\_\_\_\_  
State \_\_\_\_\_ Zip \_\_\_\_\_  
[ ] 1 year \$21.00 [ ] 2 years \$40.00 [ ] \$2.00 Single Copy  
**Subscription Hot Line: 1-800-336-9927**  
Exp. Date \_\_\_\_\_ Card No. \_\_\_\_\_  
Signature \_\_\_\_\_

**Orders to:**  
**The Daze, Inc., Box 57, Otisville, MI 48463**  
Please allow 30 days for your first issue - Canadian Subscribers, add \$1.00 per year and subscribe by charge card only! This Special Offer may not be combined with any other special offer.  
Offer Expires December 31, 1997

# A Piece of A.J. Bennett History

by Charles Upton

While doing a genealogy search at the Guernsey County Courthouse a few weeks ago, I was searching for old passports and came across a Passport Application for Arthur J. Bennett, with his picture. I have extracted the information shown on the application.

United States of America, State of **Ohio**, County of **Guernsey** ss: I, **Arthur J. Bennett**, a Citizen of the United States, hereby apply to the Department of State, at Washington, for a passport. I solemnly swear that I was born at **London, England**, on **1-18-1866**, that I was married on **Oct. 13, 1892**; that I emigrated to the United States, on or about **June 1886**; that I resided continuously in the United States from **1886 to 1934**, at **Cambridge, Ohio**; that I was naturalized as a citizen of the United States before the **Common Pleas** Court of **Common Pleas** at **Cambridge, Ohio** on **Jan. 17, 1929**, as shown by the Certificate of Naturalization presented herewith; that I am the IDENTICAL PERSON described in said certificate; that I am domiciled in the United States, my permanent residence being at **519 N. 7th St.**, in the city of **Cambridge**, State of **Ohio**. My father **Benjamin Bennett**, was born at **London, England** on **12-3-1829** is now deceased.—— I am about to go abroad temporarily and intend to return to the United States within 3 months with the purpose of residing and performing the duties of citizenship therein. I desire a passport for use in visiting the countries hereinafter named for the following purposes: **England, Business & Relatives**. I request that my passport include my wife **Martha C. Bennett**, who was born at **Lexington, Mass.** on **Oct. 20, 1867**, and to whom I was married on **Oct. 13, 1892**. Her present address is **519 N. 7th St., Cambridge, Ohio, Guernsey Co.**

## OATH OF ALLEGIANCE

Further, I do solemnly swear that I will support and defend the Constitution of the United States against all enemies, foreign and domestic; that I will bear true faith and allegiance to the same; and that I take this obligation freely, without any mental reservation or purpose of evasion: So help me God.

**Arthur J. Bennett**

Sworn to before me this **10th** day of **July, 1934**.

**Dwight M. Pulley**

Clerk of the **Common Pleas** Court at  
**Cambridge, O.**

## DESCRIPTION OF APPLICANT

Height: **5 feet, 8 1/2 inches.** Age: **68 years.**  
Hair: **Gray** Eyes: **Blue**  
Distinguishing marks or features: **Mole on right leg**  
Place of Birth: **London, England**  
Date of Birth: **Jan. 18, 1866**  
Occupation: **Glass Manufacturer**  
I intend to leave the United States from the port of **New York** sailing on board the **Washington** on **Aug. 1, 1934**.

## ADDRESS

I request that my passport be mailed to the following address:

Name: **Arthur J. Bennett**  
No. and Street: **519 N. 7th St.**  
City and State: **Cambridge, Ohio**

## AFFIDAVIT OF IDENTIFYING WITNESS

I, the undersigned, solemnly swear that I am a citizen of the United States; that I reside at the address written below my signature hereto affixed; that I know the applicant who executed the affidavit herein before set forth to be a citizen of the United States; that the statements made in the applicant's affidavit are true to the best of my knowledge and belief; further, I solemnly swear that I have known the applicant personally for **30** years.

**Chas. D. Turnbaugh, Judge Courts**  
**Cambridge, Ohio**

Sworn to before me this **10th** day of **July, 1934**

**Dwight M. Pulley**

Clerk of the **Common Pleas** Court  
at **Cambridge, O.**





## RECENT FINDS

- Large Crown Tuscan Urn, etched Portia
- Large Wildflower Hurricane Shades on Mt. Vernon candlesticks (2)
- Ebony square bowl, gold encrusted Wildflower
- Amethyst perfume with Early Wildflower
- Blue II perfume set with Early Wildflower
- Ebony center handled tray, silver Gloria
- Royal Blue 13" footed Gadroon salad bowl
- Crown Tuscan 11 1/2" bowl, gold encrusted Rose Point
- Jade Ram's Head bowl
- Ebony Ram's Head bowl
- Primrose 1 lb. candy
- Mardi Gras ivy ball
- Large Chantilly pitcher on sterling base
- 2588 Near Cut orange bowl, p. 73 in the Near Cut book
- Amber 2-handled Decagon bowl etched Lorna
- Emerald Green 2-handled Decagon bowl etched Cleo with gold edge, 8 1/2"
- Near Cut Radium 2626 punch bowl and foot, p. 68 in Near Cut book
- Emerald Green 5 piece Bridge Set with four Crackle tumblers
- Crown Tuscan 10" gold encrusted Rose Point footed vase
- Pair #437 9 1/2" candlesticks with unknown gold etch
- Light Amber Rose Lady flower frog

**Editor's Note:** In the future, we would like to publish more pictures of the unusual finds. So, dear contributors, please take a snapshot of some of your treasures and we'll do our best to include them in a future *Crystal Ball*.

Please send photos to:

National Cambridge Collectors Inc.  
PO Box 416  
Cambridge, OH 43725-0416

Sorry, but they can't be returned, however, we'll think about building a scrapbook of them for display in the Museum. We really appreciate your sharing your finds with all of us. Even if you don't have a picture, please let us know what you are finding.

Thank You!

### WE CLEAN CLOUDY GLASS!

**\*\* SATISFACTION GUARANTEED \*\***

YES, IT IS TRUE THAT WE REALLY CAN RESTORE THE INTERIOR OF YOUR CRUET, VASE, DECANTER AND MOST OTHER INTERNALLY ETCHED ITEMS BACK TO NEAR ORIGINAL CONDITION!

WE DO NOT OIL, WAX OR COVER UP THE SICKNESS IN ANY WAY! WE ACTUALLY REMOVE IT.

NO ITEMS ARE TOO SICK TO CLEAN! IF WE CANNOT CLEAN YOUR ITEM TO MEET YOUR SATISFACTION, THE CLEANING IS FREE!

WE ARE SO CONFIDENT IN OUR SERVICE THAT WE ASK THAT YOU SEND NO MONEY. WHEN WE RETURN YOUR ITEM A BILL WILL BE ENCLOSED FOR THE POSTAGE & CLEANING. IF YOU ARE HAPPY, PLEASE SEND PAYMENT; IF NOT, RETURN THE BILL MARKED "NOT SATISFIED".

PLEASE ALLOW 6-8 WEEKS FOR REDELIVERY OF MOST ITEMS. ALL GLASS IS HANDLED AND CLEANED AT YOUR RISK. SOME VERY CLOUDY ITEMS MAY TAKE SEVERAL ADDITIONAL WEEKS.

CRUET	\$20.00	COCKTAIL SHAKER	\$30.00
COLOGNE	\$20.00	SALT SHAKER (SINGLE)	\$15.00
WATER BOTTLE	\$30.00	SALT SHAKER (PAIR)	\$25.00
DECANTER	\$30.00	CRUSHED FRUIT JAR	\$30.00
VASES (UNDER 12 IN.)	\$25.00	LAVENDER JAR	\$20-30.00

ALL OTHERS WRITE FOR QUOTE

SHIP TO: CARLISLE & ASSOCIATES  
28220 LAMONG ROAD, DEPT. C  
SHERIDAN IN 46069  
(317) 758-5767 AFTER 6:00 P.M.



# ISAACS ANTIQUES

We are taking this opportunity to thank you  
for your past patronage.

We invite you to attend our  
retirement sale to liquidate the entire inventory.

Thanks to All of You,  
Doris and Roy

# ISAACS ANTIQUES



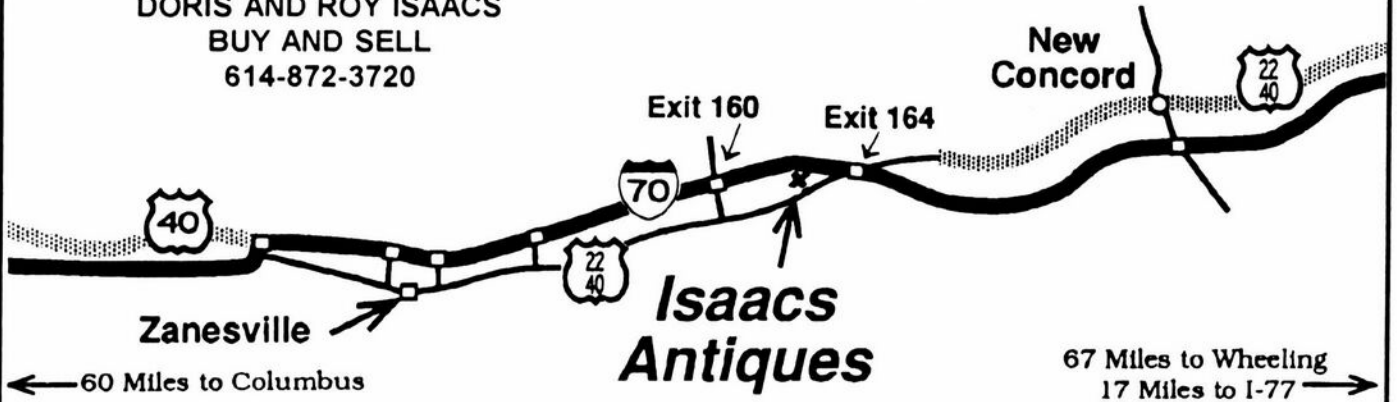
WE FEATURE GLASSWARE OF: CAMBRIDGE,  
HEISEY, FENTON & FOSTORIA  
Plus Art Pottery & a General Line of Antiques

DORIS AND ROY ISAACS  
BUY AND SELL  
614-872-3720

7525 East Pike  
Norwich, Ohio 43767  
614-872-3720

In East Pike Antique Complex - Rt. 40,  
One Mile West of I-70 Norwich Exit #164

Hours 10 - 5:30 Mon. - Sat.  
12 - 5:30 Sun.  
Open Year Round



← 60 Miles to Columbus

**Isaacs  
Antiques**

67 Miles to Wheeling  
17 Miles to I-77 →

# ~ GLASS ~ MARKETPLACE

## Classifieds

**WANTED:** Two Monkeys Lamp - Crown Tuscan Scottie or Pouter Pigeon - Also looking for #2800/234 Crystal Community Wash Basin. **If you have or find, call collect 1-609-965-2413.**

**WANTED:** Cambridge Arms, Epergnnes plus Accessory Pieces. Vases #2355 any size and bobeches #327. **Jody Stacken, 3022 Quail Creek Dr., Topeka, KS 66614. (913) 272-7118.**

**WANTED:** Hard to find Rose Point, Rose Point #3106 stems, Nude stems, and novelty items. Write price and description. **Nancy and Jim Finley, 711 West Broadway, Sedalia, MO 65301. Phone (816) 826-5032 or 827-0101.**

**WANTED: HUNTING FOR HO.** Tally-Ho; cocktail shakers, jugs, candlesticks and vases in colors. Please call me if you have any to sell. Thanks! **Cindy Jones (914) 631-1656.**

**WANTED: Cambridge Bridge Hounds (Pencil Dogs) -** Interested in all colors (except Amber, Amethyst, Crown Tuscan, Forest Green, Emerald, Ebony, Mocha, Smoke and Tahoe Blue). **Contact Lorraine Weinman at (614) 594-3305 or bring them to Convention and contact Lorraine, Cindy Arent or Rich Bennett.**

The Dealers & Employees  
of the

## DEXTER CITY ANTIQUe MALL

Extend a sincere THANK YOU to  
all of you who included us on  
your tour of stops during the 1996  
Cambridge Glass Convention.

...God Bless You!

## CAMBRIDGE GLASS BOOKS FOR SALE

*By National Cambridge Collectors, Inc.*

### Colors in Cambridge Glass

128 pages, 60 color plates, fully indexed, Hardbound with price guide \$19.95

### 1930-1934 Cambridge Glass Company Catalog Reprint

250 page reprint of original catalog, Paperback with price guide \$14.95

### 1949-1953 Cambridge Glass Company Catalog Reprint

300 page reprint of original catalog, Paperback with price guide \$14.95

### 1956-1958 Cambridge Glass Company Catalog Reprint

164 page reprint of original catalog, Paperback \$12.95

### Cambridge Caprice

200 page book illustrating the most popular line of Cambridge Glass. Lists color, decorations, reproductions and rare pieces. Paperback with value guide \$19.95

*For NCC Members, these publications at a 10 percent discount.  
By Bill & Phyllis Smith*

### Cambridge Glass 1927-1929

66 page reprint of original catalog, Paperback with identification guide \$7.95

*By Mark A. Nye*

### Cambridge Rose Point

94 Pages, fully indexed, Paperback with Value Guide \$12.95

### Value Guide

Updated value guide for Rose Point Book, Included with above. Price alone, includes postage \$5.00

**Cambridge Stemware NEW.** 2nd edition. Same format as original. \$19.95

*By Mary, Lyle and Lynn Welker*

### Cambridge Glass Company

120 pages of reprints from eight old catalogs, Paperback \$10.00

**Cambridge, Ohio Glass in Color II,** Spiralbound \$5.95

*By Harold and Judy Bennett*

### 1903 Cambridge Glass Company Catalog Reprint

106 page reprint of an original catalog, Paperback \$7.50

*By Degenhart Paperweight and Glass Museum*

**Reflections,** 45 page book giving a history of all 18 glass companies in Guernsey County. Paperback, with pictures. \$5.00 including postage

**Address orders to: Books, National Cambridge Collectors, Inc., PO Box 416, Cambridge OH 43725-0416**

Please add postage and handling to your order (first book, \$2.00; each additional book, 50 cents). Ohio residents add 6 1/2% state sales tax. Please send only check or money order, NO CASH, NO CHARGE CARDS *Dealer Discounts Available - Please Write!*

# DEALERS



# DIRECTORY

NOTE: When writing to the dealers listed here, please enclose a SASE!

<p><b>DAUGHERTY'S ANTIQUES</b> Jerry and Shirley</p> <p>Antiques and Collectibles * Mostly Glass</p> <p>Shows &amp; Mail Orders 2515 Cheshire No. 402-423-7426 Evenings Lincoln NE 68512</p>	<p><b>"HAPPINESS IS"</b> Buddy and Kathy Stultz</p> <p>3106 Warren Court, Glen Allen, VA 23060 804-672-8102</p> <p>Specializing in American Made Glass We Buy &amp; Sell, Shows &amp; Mail Order</p>	<p><b>THE MUTED SWAN ANTIQUES</b></p> <p>5486 Peachtree Rd. Chamblee, GA 30341 Heart of Chamblee Antique Row Specializing in Cambridge, Heisey and Fostoria</p> <p>Bill &amp; Pat Miller 404-451-7620</p>
<p><b>Milbra's Crystal</b> Buy &amp; Sell Replacement and Matching Specializing in: Cambridge</p> <p>Milbra Long (817) 645-6066 Fostoria Emily Seate (817) 294-9837 Heisey PO Box 363, Rio Vista, TX 76093 and others</p>	<p>BUY-SELL (513) 390-3617</p> <p><b>Taste of Honey</b> Glassware - Collectibles</p> <p>Clarke West 4888 Brannan Dr. E. Carole West Springfield, OH 45502</p>	<p><b>ARMORY ANTIQUES</b> 168 West Main Street Plain City, OH 43064</p> <p><b>QUALITY THINGS</b> Cambridge, Heisey, China, Silver, Furniture Mon-Sat 10-5 VISA/MC 614-873-4890</p>
<p><b>THE GLASS URN</b> 456 West Main Street, Suite G Mesa, AZ 85201 602-833-2702</p> <p>Mail Order Shows Open Shop</p> <p>CAMBRIDGE, FOSTORIA, HEISEY, ETC.</p>	<p><b>ANTIQUES ON THE MALL</b> SPECIALIZING IN CAMBRIDGE GLASS</p> <p>Bogart's - Bldg. #3 - Norwich, OH</p> <p>Virginia Bennett 614-432-4483 64183 Warne Drive, Cambridge, OH 43725</p>	<p><b>GATEWAY ANTIQUE MALL, INC.</b> JUST NW OF MINNEAPOLIS-ST. PAUL, MN Next to Super 8 in Rogers, MN (I-94/101 Intersection)</p> <p>85 Dealers 7 Days, 10-6 612-428-8286 ELAINE STORCK, DIRECTOR</p>
<p><b>ETTELMAN'S DISCONTINUED CHINA &amp; CRYSTAL</b> Cambridge a Specialty</p> <p>PO Box 6491-CB Corpus Christi TX 78466 Phone 512-888-8391 Include S.A.S.E</p>	<p><b>D &amp; D ANTIQUES</b></p> <p>Columbus, Ohio</p> <p>Dick Slifko SHOWS ONLY</p>	<p><b>RONI SIONAKIDES</b></p> <p>6565 W. Herbison Rd. DeWitt, MI 48820 517-669-5981</p> <p>Fostoria, Tiffin, Duncan, Cambridge</p>
<p><b>THE GLASS CUPBOARD</b></p> <p>P.O. Box 652 West End, North Carolina 27376</p> <p>Marcia Ellis Cambridge, Duncan, Heisey 910-673-2884 Shows, Mail Order</p>	<p><b>JUDY'S ANTIQUES</b> Judy Bennett 422 S. Ninth Street (Corner of Jefferson) Cambridge, Ohio 43725</p> <p>BUYING Ph. 614-432-5855 SELLING</p> <p>CAMBRIDGE GLASS MY SPECIALTY</p>	<p><b>YOU CAN ADVERTISE YOUR ANTIQUe SHOP HERE!</b></p>
<p><b>FINDER'S ANTIQUE HOUSE</b> New Home of Elegant Glassware 1169 Piney Forest Rd. Danville, VA 24540 (804) 836-6782 Cambridge-Heisey-Duncan-Fostoria</p>	<p><b>GREEN ACRES FARM</b></p> <p>2678 Hazelton Etna Rd., Pataskala, OH 43062 (State Route 310 North)</p> <p>Sat &amp; Sun 1-7 PM 614-927-1882 Antiques, Crystal Glass and Collectibles</p>	<p><b>CRYSTAL LADY</b></p> <p>1817 Vinton St., Omaha, NE 68108 Joann D. Hagerty Bus. 402-341-0643 Res. 402-391-6730 Specializing in Elegant Glass &amp; Collectibles</p>
<p><b>ASK</b> Specializing in Cambridge. Wide variety.</p> <p><b>Booth #14 in the Antique Mall of Boswell</b> 90 miles south Chicago, right on U.S. 41. 7 days a week 10-5, except Sun. 12-5 (317) 869-5525</p>	<p><b>FLORENCE SOLITO</b> 54 Old Stafford Rd., Tolland CT 06084</p> <p>Stock All Elegant Glassware Mail Order Since 1978 Send Wants</p> <p>203-872-3294 Satisfaction Guaranteed</p>	<p><b>YOU CAN ADVERTISE YOUR ANTIQUe SHOP HERE!</b></p>
<p><b>MICHAEL KRUMME</b> Cambridge*Heisey*Fostoria*Duncan Miller*Paden City New Martinsville*Fenton*Tiffin*Imperial*Morgantown</p> <p>I search - Send detailed want list - all kept on file PO Box 5542 Santa Monica, CA 90409</p>	<p><b>YOU CAN ADVERTISE YOUR ANTIQUe SHOP HERE!</b></p>	<p><b>MARGARET LANE ANTIQUES</b></p> <p>2 E. Main St., New Concord, OH 43762 Lynn Welker 614-826-7414</p> <p>Cambridge Glass Matching Service Hours Mon-Fri 10-12 AM, 1-5 PM or by Appointment</p>
<p><b>GLASS RESTORATION</b></p> <p>BRILLIANT DON &amp; LYNNE CRYSTAL WORMLAND ELEGANT MT. CLEMENS, MICH DEPRESSION 810-468-3519</p>	<p><b>ALADDIN LAMP BOOKS</b> Free List Figurine Lamps Wanted Bill &amp; Treva Courter</p> <p>3935 Kelley Rd. Kevill, KY 42053 Phone/FAX 502-488-2116</p>	<p><b>DEXTER CITY ANTIQUE MALL</b></p> <p>P. O. Box 70, Dexter City, Ohio 45727 (614) 783-5921</p> <p>Located on Ohio St. Rt. 821 Between Exits 16 &amp; 25 off I-77 Just 30 min. South of Cambridge, Ohio</p>

## ***Great Northeast Depression Era Glass and Pottery Show***

***Westchester County Center, White Plains, N.Y.***

***August 10, 1996 10 a.m. to 5 p.m.***

***August 11, 1996 10 a.m. to 4 p.m.***

Second great year! Already known as one of the finest depression glass and pottery shows in the nation. The nation's largest metropolitan area hosts a show of immense national caliber. Over 50 renowned dealers from around the country will bring the best merchandise. The widest variety, from A to Z to Elegant to China. The Rarest of the Rare.

Visit the National Cambridge Collectors booth at the show. Meet members, buy Cambridge books and favors on hand. This is a show that lived up to its word of mouth. This is not a show you will browse in an hour or two. Plan to spend the day. You will be delighted with the scope and quality of the merchandise. It's over 25,000 square feet!

White Plains is centrally located just 20 miles north of New York City. For directions, contact the County Center at 914-285-4050 or fax a request to 914-631-8278.

***General Admission \$6.00. NCC members with their card or this ad, just \$5.00.***

**Quick, close your eyes. What's the best glass show in the country? Coming August 10-11.**

---

**National Cambridge Collectors Inc  
PO Box 416  
Cambridge OH 43725-0416**

---

FIRST CLASS MAIL  
U.S. POSTAGE  
PAID  
PERMIT NO. 1  
CAMBRIDGE, OH

---

# **FIRST CLASS MAIL**

*Membership Renewal Notice*

**If the date on your address label is 7-96,  
this is your LAST ISSUE of the Crystal Ball.**

Please take a moment and renew now. Thank you!