



Cambridge Crystal Ball

Published monthly by National Cambridge Collectors, Inc.
to encourage and report the discovery of the elegant and boundless product of the
Cambridge Glass Company of Cambridge, Ohio

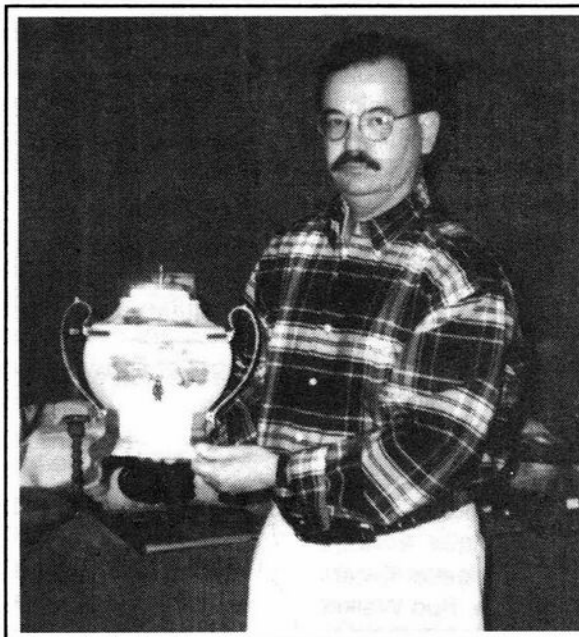
Issue No. 288

April 1997

1997 AUCTION: ONE OF THE BEST EVER

by Cindy Arent

This year's annual auction will go down in NCC history as one of the best ever thanks to the efforts of auction chairman Lynn Welker and his committee. Auctioneer Craig Connelly, of Granville, Ohio, and his wife, Lynn, also deserve a tremendous amount of credit for their part in making the 1997 auction a huge success. Craig combines a talent for selling Cambridge Glass with excellent audience rapport which always makes the NCC auctions a pleasure to attend.



also saw a very large number of absentee bids submitted.

A few of the rare and unusual items on the block were: Amethyst Dolphin 2-lite candlesticks - \$400, Marigold-colored 7-inch 3-toed candy box - \$325, #1956/2-3-4 floral centerpiece - \$250, 1402 Carmen Tally Ho cordial/gold D1007/8 - \$370, Ivory Samovar/painted scene - \$550 (pictured on this page being held by auction chairman Lynn Welker), and a #66A Caprice 14-1/2 inch banana boat - \$200.

The 1997 auction offered many wonderful pieces of Cambridge for the serious glass buffs as well as the beginning collectors. Many of the favorites were present including: Nearcut, Nudes, Caprice, Etchings, Swans, Crown Tuscan, and much more. The bidding crowd consisted of many familiar faces along with some new faces that we hope will return at convention time.

Attendance represented many states from as far away as California, Florida, and Missouri. This year

As usual, the 1997 auction contained an excellent representation of the many lines and colors

(Continued on page 8)

Inside This Issue:

- Planned Giving: Some Answers
- 1950s Stemware
- February 1997 Quarterly Meeting Minutes
- 1997 Auction Results
- 1997 Convention Schedule and Update
- Thoughts from an Amateur

Cambridge Crystal Ball

Official publication of National Cambridge Collectors Inc., a non-profit corporation with tax exempt status. Published once a month for the benefit of its members. All rights reserved; reproduction in whole or in part without written permission of NCC and the author is prohibited.

Membership is available for individual members at \$17.00 per year and an additional \$3.00 for associate members (12 years of age and older, residing in the same household). Of the master member dues, \$12.00 is credited to a one-year subscription to the *Crystal Ball*. All members have voting rights, but only one *Crystal Ball* per household. **Effective 1/1/96, multi-year memberships are available: 2 years for \$33.00, 3 years for \$49.00.** Back issues of the *Crystal Ball* are available for \$1.00 each or 12 issues for \$10.00. Complete sets for \$79.00.

1996-1997

OFFICERS AND COMMITTEE CHAIRPERSONS

President	Richard D. Jones
Vice President	Mark A. Nye
Secretary	Bud Walker
Treasurer	Charles Upton
Sergeant-at-Arms	Tarzan Deel
Acquisitions	Joe Andrejczak
Budget & Finance	Dennis Snyder
By-Laws	Bud Walker
Corresponding Secretary	Charles Upton
Long-Range Planning	Tarzan Deel
Membership	Jeff Ross
Museum Expansion/Relocation	Willard Kolb
Museum Facilities	Carl Beynon, Joe Miller
Museum Interior	J.D. Hanes, Marybelle Peters
Non-Glass Items	Tarzan Deel
Nominating	Joy McFadden
Program	Bill Hagerty
Projects	Tarzan Deel
Publications	Mark A. Nye
Publicity	Cynthia A. Arent
Study Group Advisor	Marybelle Peters
1997 Convention	Mark A. Nye, Bud Walker
1997 Auction	Lynn M. Welker, Joe Andrejczak
1997 Glass Show	Mary Beth Hackett, Joy McFadden
1997 Flea Market	Mike Arent
<i>Crystal Ball</i> Editor	Lorraine Weinman
<i>Crystal Ball</i> Circulation Directors ...	Lisa and Mike Neilson

National Cambridge Collectors Inc. owns and operates the **Museum of Cambridge Glass** at 9931 East Pike Road, Cambridge, Ohio. Open April through October 9AM-4PM Wednesday through Saturday and Noon-4PM on Sunday. March open Friday-Sunday. Closed November-February, Easter, July 4th.

ADVERTISING RATES

Display Rates (camera ready ads preferred)

<u>Unit</u>	<u>Members</u>	<u>Non-Members</u>
Full Page	\$45.00	\$60.00
3/4 Page	\$35.00	\$50.00
1/2 Page	\$25.00	\$35.00
1/4 Page	\$15.00	\$25.00
1/8 Page	\$10.00	\$15.00

Classified Rates

10 cents a word \$2.00 minimum

Abbreviations and initials count as words. Type sizes cannot be mixed in classified ads. **Payment in full must accompany all ad copy.** Contact Editor for copy assistance.

Dealer Directory

Six Line Maximum \$24.00 for 12 month contract

Cambridge *Crystal Ball* assumes no responsibility for items advertised and will not be responsible for errors in price, description, or other information.

Advertising copy, letters, articles, must be received by the 5th of preceding month to be considered for publication in the next issue.

Please address all correspondence (include SASE) to:

National Cambridge Collectors, Inc.
P.O. Box 416
Cambridge, OH 43725-0416

President Rick Jones	914-631-1656
Vice President Mark Nye	517-592-3578
Secretary Bud Walker	609-965-2413
NCC Museum: Phone and Fax	614-432-4245

Please notify us immediately of any address change.

Opinions or information stated in any signed article or letter printed in the *Crystal Ball* are those of the author and may not agree with National Cambridge Collectors, Inc. The Editor reserves the right to refuse and to edit any material submitted for publication to conform to the editorial style of the *Crystal Ball*. Members are encouraged to write to NCC and the *Crystal Ball* sharing their knowledge and questions!

President's Message

Planned Giving: Some Answers

And, thanks for your continued support. That's the way we signed off our thank you last month to persons who gave donations to NCC during 1996.

I hate fundraising and most fundraisers. That said, I recognize that our membership dues do not cover all the operating expenses of the club, the *Crystal Ball*, and our museum. We depend on events like the June miniauction, the March auction, the flea market, and ongoing donations to stay in the black. It is a fact of life. If we want to educate and preserve, we as an operation must survive.

It's quite a quandary. We could ask for a dues increase, but we constantly have to rationalize the benefits of membership and our present structure.

To help cope with these issues, we began a dialogue about a year ago about establishing an endowment fund. We had to think longer term than just budget to budget, auction to auction. We've learned a lot in this past year thanks to the efforts of volunteers like Clarke West, Russell Booth and Joe Solito.

Let me share what I think I've learned, and ask you to provide me feedback if your knowledge can add to this. We very much would like to have the Fund in place at the June convention but want to do it right and meet the members' needs.

First let me clear up a misconception. We do not have to have an endowment fund in place in order for members to leave a bequest that remembers the club and museum. It is my understanding from the lawyers that our current nonprofit status permits us now to receive such gifts. Members can express their wishes on how they would like the bequest directed, but final decisions on apportionment are made by the board of directors.

The endowment fund laws provided to us by Russell Booth are geared toward organizations where education is the mission, like universities. We also have "preservation" as part of our charter. That potentially muddies the waters a bit but we're not sure if it is a problem. The board could designate the museum as having an exclusive education mission and endowment donations

could be directed there. Anyone who can help clarify this, please speak up.

Endowment funds are best used when they are the recipients of cash and securities. The Fund is designed to build a cash reserve that is not touched for operating needs, but the interest is used to meet operating expenses or special needs as determined by the board in behalf of the membership.

The stipulations attached to the bequest need to be flexible enough for the ongoing administrators to handle the needs in the best interests of the charitable organization. Some people donate artwork to an endowment (or an operating fund). They may have bought the piece at an attractive price and it has appreciated greatly. You can write off the donation at the present market value and not pay taxes on the gain because you made a charitable donation.

An organization like ours needs the flexibility to sell the art (since it is not likely to have a place in the museum) and use the cash for other purposes like glass acquisition, building expansion, or the endowment fund.

Glass donations are a particularly important item for members and for the organization. Our goal is to have a museum with 100% club-owned glass (we're well short of that). Glass collection bequests will be a critical component in the achievement of this goal. However, in the confines of an endowment, this generosity could at times be too restrictive. What if the piece duplicates a presently owned piece?

Our current donation guidelines permit the museum interior committee the flexibility to sell a piece if it duplicates. It is probably smart to extend this policy to our planned giving program.

Joe Solito, a member who is an attorney, has suggested that we establish two funds in addition to our present ones: the endowment fund (for cash contributions) and a permanent collection program (for glass donations). Members who desire a donation of glass would be asked to stipulate that the

(Continued on page 11)

HEIRLOOM



5000/1
9 oz. Goblet



5000/2
6 oz. Sherbet



5000/3
3 oz. Cocktail

ROCK CRYSTAL

Lynbrook

1070



3790
Goblet



3790
Low Sherbet



3790
Cocktail

Cambridge Circle



3796
Goblet



3796
Sherbet



3796
16 oz. Ice Tea

1950s Stemware

by Mark Nye

The last years of the original Cambridge Glass Co., 1950 to 1954, saw nine stemware lines introduced. Two of these, Nos. 3797 and 3798, were part of the Square line, the subject of last month's article, and will not be discussed here. The remaining seven lines are Nos. 3779, 3790, 3795, 3796, 5000, 7967, and Caprice 301. All made it into the Cambridge catalog prior to the demise and sale of the company during the summer and fall of 1954.

Actually No. 5000, or Heirloom as it was called, was not a new line, being a continuation of a pattern first produced by Cambridge in the 1920s and initially named Centennial. In 1931 it was called Victorian, and the following year, Martha Washington. The original line was discontinued sometime during the early 1940s. When the decision was made in 1952 to revive the line, Cambridge elected to rename it and chose the name Heirloom. Existing molds were used to manufacture six of the nine 5000 stemware items. New molds were made for the cocktail, five-ounce footed juice, and the six-ounce footed sherbet. As can be seen in the reprinted catalog page, there are two shapes in the line and these same shapes also appeared in the line's forerunners, Martha Washington and Victorian. Nothing exists to indicate production of Heirloom in any color other than Crystal. (Earlier version of the line will be found in color.) The reorganized Cambridge Glass Co., successor to the original, continued production of Heirloom. The last Cambridge price list, issued by the new company in 1958, offered five of the original nine items: the goblet; tall sherbet; cocktail; and two footed tumblers, 12 ounce and 5 ounce, Nos. 4 and 5 on the reprinted catalog page.

The molds for the No. 3779 stems were first ordered in October 1942 and were to be used in conjunction with the bowls then in use for the No. 3130 line. A note added in 1944 to the mold log book states the molds had not been worked as of that date. A 1950 note stated the molds had been worked but only after the stems had been shortened. The No. 3779 stemware first appears in the Cambridge catalog on a supplemental page issued September 1950. Chantilly and Roselyn appeared on No. 3779 blanks at the time it was issued. A year later following its

introduction, the Daffodil etching was available on this blank. A number of other etchings, including one featuring an orchid, were designed for use on No. 3779 stemware. However, none were ever put into production, and samples were limited to the goblet. Examples of these are seldom, if ever, found today. No. 3779 was produced for a short time during the reopen years, 1955-1959.

No. 3790 or Simplicity stemware was brought out in the summer of 1950. Included in the September 1950 price list, the line was illustrated on a supplemental catalog page issued roughly the same time. From then on Simplicity stemware was in the Cambridge catalog right up until the final closing in 1959. The line was made in Crystal only by the original company. However, during the years the second Cambridge Glass Co. was in operation, Simplicity was made in Carmen, Moonlight Blue, and Smoke. While only one etching, Magnolia, appears on this line, there is a large list of engravings that can be found on 3790 blanks. Autumn, Tropical, Lily of the Valley, Lynbrook, and Festoon were first cut onto 3790 blanks prior to the summer of 1954. The engravings Crown, Danube, Flight, Miss Flowers, Orion, Royal, Snowflower, Starburst, Starlite, and three known only by numbers (S-1, S-2, S-3), date to the reopen years. Four pieces of Simplicity - the goblet, low sherbet, cocktail, and ice tea - were made in Moonlight Blue and cut Danube. These pieces were then sold as Blue Danube stemware.

Production of No. 3795 or Sweetheart stemware began in very late 1950 or early 1951. One trade journal had this to say: "Sweetheart, a complete new line of stemware, will please the bride to be, and the multitude a little on the sentimental side." Named Sweetheart because of the heart-shaped stem, No. 3795 stemware was made in Crystal only and apparently not decorated. In production for two years at most and probably less than that, Sweetheart stemware is infrequently seen and a collector should not pass up an opportunity to acquire a piece.

Cambridge Circle, No. 3796, was initially called Horizon in a trade journal report. The name Horizon is not found in any Cambridge document. Made only



Low Cocktail

(Melody)



Low Wine



Low Cordial



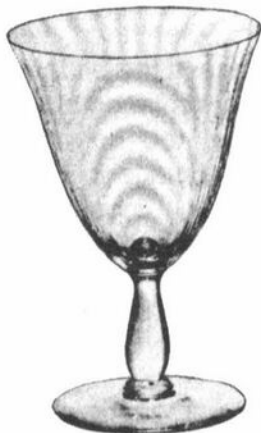
Goblet

3795 LINE
STEMWARE
Sweetheart



Low Sherbet

CAPRICE



301
Goblet



301
Sherbet



301
Cocktail

(1950s STEMWARE - Continued from page 5)

in Crystal with non-optic bowls, Cambridge Circle was in the catalog from 1951 until 1954. However, it is seldom seen today and will be found in few stemware collections.

Melody or No. 7967 stemware is a hybrid line using the low shape bowl from the No. 7966 line and the Pristine line foot. The first dated reference to the line is the October 1953 Cambridge price list but how long the line had been in production prior to that date is not known. The line is illustrated on two undated supplemental catalog pages issued after 1950 and maybe as late as October 1953. Shown etched Dawn on one of these two catalog pages, a few pieces of this line were also etched Magnolia and gold-encrusted, probably for sample purposes only and never put into commercial production. Likewise, a few pieces were cut Rondo, again most likely as samples and the combination never put into commercial production. Melody, made only in Crystal, was not produced after 1954 and is not easily found today.

In an effort to take advantage of the past popularity of the Caprice line, Cambridge introduced a new style of stemware circa 1951. Known as Caprice 301, the line was nothing more than Simplicity or 3790 stemware with the Caprice pattern imparted to the bowls by use of optic blocks. Known only in Crystal, Caprice 301 stemware continued in the Cambridge line up until the final 1959 closing. While not plentiful, samples will be found in most Cambridge stemware collections.

Just because we differ
 On where to go or when
 We'll end up together
 Wherever, 'cause you're my friend
 One place first, then later
 Where the other gets the choice
 Cooperation is the password
 And in sharing we rejoice.
 Life can be real pleasant
 With argument left out
 And acquiescence accepted
 While minds reserve the doubt.
 There is always room to differ
 I won't try to change your stance.
 And agreement without rancor
 Or a smile to take a chance.

Paul E. White
 11/5/96

February 1997 Quarterly Meeting Minutes

by Bud Walker, Secretary

On Friday, February 28, at the Pritchard Laughlin Civic Center, President Rick Jones opened the quarterly meeting. The first order of business was a financial report by Charles Upton. The highlight of his report was that the building-relocation fund was almost \$32,000.

Acquisitions: Joe Andrejcek reported that due to a change in job and territory he had little time to spend looking for Cambridge glass. He also reported that Bud Walker and Kelvin Moore had been appointed to aid in this effort. Joe asked if any member hears of an outstanding piece that the museum could purchase to please let us know.

By Laws: Nothing pending at this time.

Planning: Tarzan Deel reported that work is being done on establishing an Internet site for NCC. The club will try to register NCC.

Membership: Sharon Miller reported that total membership was 1,327.

Museum expansion: Willard Kolb reported that his group was exploring the possibility of purchasing additional acreage behind the storage building that could be used for future expansion as it is located above the flood plain.

Facilities: No report.

Museum facilities: Marybelle Peters reported that her group is in the process of cleaning the glass cases.

Non-Glass: No report.

Nominating: Joy reported that three seats on the board are open. Rick Jones and Bill Hagerty have elected to seek another term on the board. Joy McFadden has chosen not to seek another term. Those running for a seat on the board are: Bill Hagerty, Rick Jones, Lydia McNeil, Lynne Verbsky, and Fred Schaefer, who was nominated from the floor.

Convention program: Will be a modified version of the November program.

(Continued on page 14)

(1997 AUCTION - Continued from page 1)

produced by The Cambridge Glass Company between 1901 and 1958. A few of these items were: #856 Amber Decagon flip bowl/gold Hunt Scene - \$260, #72 Smoke 2-lite candlestick - \$220, #1402 Carmen Tally Ho ice bucket - \$60, Fernland Nearcut complete toy set - \$65, Rubina Honeycomb 9-1/2 inch bowl - \$150, Crown Tuscan 5-inch globe vase/gold Diane with acid signature - \$175, Jade Twist candlesticks (pr.) - \$60, Avocado 11-1/2 inch bowl - \$45, and a Milk Glass Martha Washington 32 oz. jug - \$95.

On Friday evening, the day before the auction, a preview was held in conjunction with the NCC March quarterly meeting. Club president Rick Jones called the meeting to order and committee reports were given. Convention chairman Mark Nye stated that plans are set for the June convention and that the theme for this year will be "Cambridge Glass in the 1950s."

Following the meeting, Lynn Welker conducted a show and tell session featuring glass pieces brought to the meeting by the members. Some of the items included: arms peg vases in Mandarin Gold, Moonlight Blue, Smoke, and Ebon; Crown Tuscan Nude ashtray/black painted foot; Green Carnival Wheat Sheaf cologne; Ebony Pillow Vase/white gold Gloria; Tally Ho ice water pitcher with insert; Peach Blo window vase/etched Cleo; Ivory dresser compact/enamelled Iris decoration; and an Ebony gold-encrusted Lorna bowl.

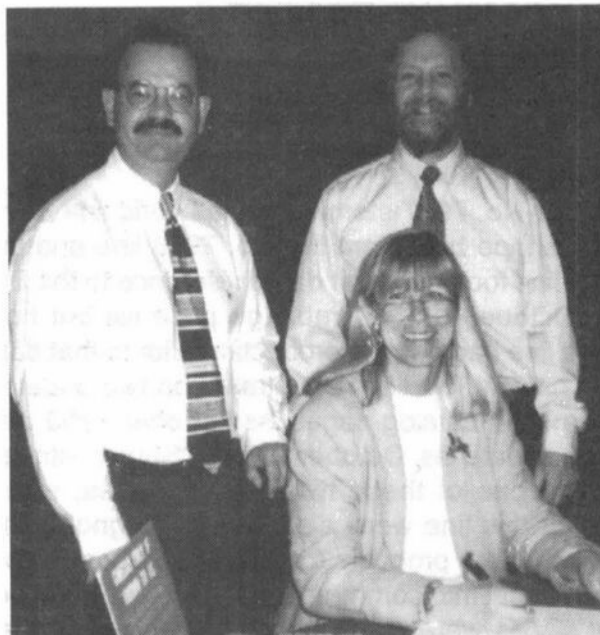
Now that the auction is over, Cambridge Glass enthusiasts can begin making plans to attend the next event. On June 27-29, the 1997 NCC Glass Show & Sale and Convention will be held at the Pritchard Laughlin Civic Center in Cambridge, Ohio. If you were unable to attend the auction, you will surely find that "special" piece of glassware at the June show.

For more information, contact the NCC at P.O. Box 416, Cambridge, Ohio 43725 or call the NCC Museum - 614-432-4245.

1997 Calendar Planning

Be sure to mark your calendars with these important National Cambridge Collectors, Inc. dates. The following are tentative dates for major club activities during 1997:

June 25-29	1997 Convention
August 23	August Quarterly Meeting/Picnic
November 1	November Quarterly Meeting



We couldn't do it without them! Auction chairman, Lynn Welker; auctioneer, Craig Connelly; and his wife, Lynn Connelly. (Arent)

7966	Tall Rondo Crystal Cordial	30.00
7967	Melody Stem with Dawn Etch	40.00
3130	Cordial Etch Portia	40.00
1066	Dark Emerald Cordial - 1 oz.	40.00
3103	3/4 oz. Crystal Brandy	20.00
3035	Carmen Cordial - 1 oz.	50.00
	Cordial Bexley Cutting	40.00
1401	Jefferson Crystal Cordial	20.00
3103	Brandy 1 oz. Carmen Top	45.00
	Regency or Stradivari Crystal Cordial	20.00
3140	Tall Sherbet Peach-Blo Crystal Stem	16.00
1066	Cobalt Cordial	50.00
1327	Cordials	
	La Rosa	35.00
	Tahoe Blue	35.00
	Gold Krystal	35.00
	Amethyst	35.00
	Chantilly Etch Crystal	45.00
	Ebony	45.00
2	Forest Green	20.00
	Dark Emerald Green	35.00
	Amber	20.00
	Carmen	60.00
	Pistachio	35.00
	Crystal	22.00
	Cobalt	35.00
	Miscellaneous	
	3500/15 Portia Etch Gold Encrusted	45.00
	Ind. Cream & Sugar	
3103	2 oz. Royal Blue and Crystal Sherry	35.00
1057	1/2 14 oz. Weiss Beer Glass Topaz	25.00
	(shown Book 30-34, p. 33B-3)	
	Imperial Hunt Scene Peach-Blo	40.00
	(shown on p. 214 Nyc Stemware Book)	
3795	Allegro Paisley Etch Wine label	40.00

UPS Extra
R. Clarke West
 4888 Brannan Dr. East, Springfield, Ohio 45502
 (937) 390-3617

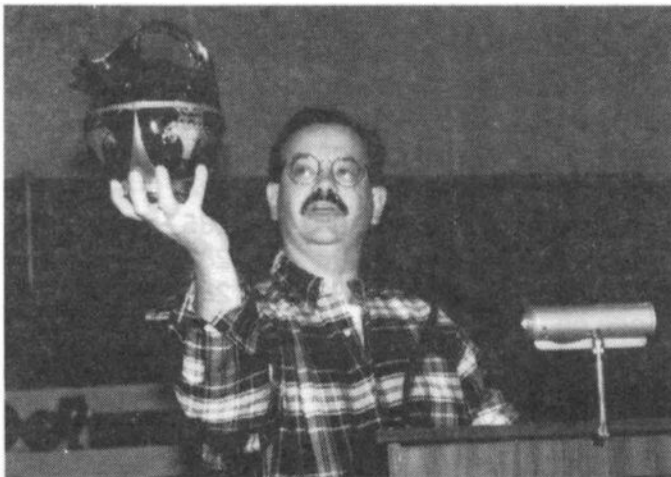
Auction 1997 Photo View



The Kuczewskis of Michigan show their NCC spirit in their "Triangle C" T-shirts. The ivy balls caught their attention. (Arent)



Many people who collect or appreciate Cambridge Glass were able to preview the glass prior to the auction. (Neilson)



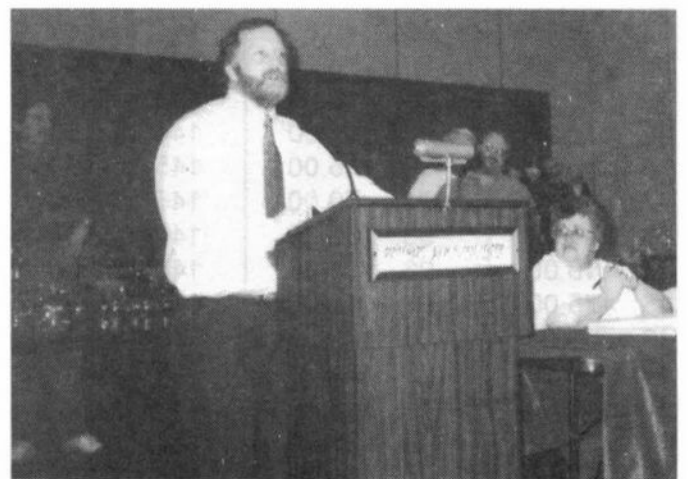
Auction chairman Lynn Welker holds up a gold-encrusted ball jug during the Show and Tell session Friday evening. (Neilson)



Tarzan Deel examines one of the auction items from the Crown Tuscan and Azurite display. (Neilson)



Part of the wide variety of Cambridge Glass items auctioned Saturday at the Pritchard Laughlin Civic Center. (Neilson)



Auctioneer Craig Connelly and our wonderful auction clerk Joy McFadden. (Arent)

1997 Benefit Auction Results - Prices Per Lot

1. 20.00	53. 40.00	105. 60.00	157. 45.00	209. 90.00	261. 17.50
2. 20.00	54. 27.50	106. 70.00	158. 40.00	210. 110.00	262. 150.00
3. 20.00	55. 60.00	107. 20.00	159. 90.00	211. 145.00	263. 145.00
4. 15.00	56. 12.50	108. 250.00	160. 60.00	212. 140.00	264. 75.00
5. 15.00	57. 7.50	109. 55.00	161. 235.00	213. 400.00	265. 55.00
6. 100.00	58. 7.50	110. 400.00	162. 40.00	214. 25.00	266. 40.00
7. 62.00	59. 12.50	111. 30.00	163. 20.00	215. 50.00	267. 5000.00
8. 40.00	60. 45.00	112. 75.00	164. 55.00	216. 12.50	268. 15.00
9. 24.00	61. 35.00	113. 115.00	165. 65.00	217. 175.00	269. 195.00
10. 24.00	62. 400.00	114. 50.00	166. 30.00	218. 180.00	270. 275.00
11. 40.00	63. 10.00	115. 40.00	167. 25.00	219. 65.00	271. 85.00
12. 15.00	64. 35.00	116. 70.00	168. 275.00	220. 450.00	272. 50.00
13. 115.00	65. 25.00	117. 50.00	169. 375.00	221. 115.00	273. 160.00
14. 25.00	66. 25.00	118. 25.00	170. 50.00	222. 95.00	274. 20.00
15. 40.00	67. 45.00	119. 145.00	171. 170.00	223. 105.00	275. 55.00
16. 15.00	68. 30.00	120. 55.00	172. 110.00	224. 95.00	276. 25.00
17. 65.00	69. 40.00	121. 40.00	173. 95.00	225. 105.00	277. 30.00
18. 75.00	70. 40.00	122. 195.00	174. 115.00	226. 75.00	278. 225.00
19. 55.00	71. 200.00	123. 105.00	175. 275.00	227. 60.00	279. 22.50
20. 25.00	72. 65.00	124. 75.00	176. 35.00	228. 60.00	280. 15.00
21. 17.50	73. 60.00	125. 140.00	177. 325.00	229. 75.00	281. 60.00
22. 60.00	74. 95.00	126. 20.00	178. 105.00	230. 130.00	282. 35.00
23. 150.00	75. 95.00	127. 35.00	179. 135.00	231. 55.00	283. 10.00
24. 65.00	76. 195.00	128. 140.00	180. 270.00	232. 95.00	284. 5.00
25. 145.00	77. 110.00	129. 150.00	181. 150.00	233. 65.00	285. 17.50
26. 135.00	78. 120.00	130. 65.00	182. 235.00	234. 35.00	286. 45.00
27. 20.00	79. 55.00	131. 85.00	183. 17.50	235. 45.00	287. 95.00
28. 260.00	80. 25.00	132. 110.00	184. 250.00	236. 40.00	288. 200.00
29. 220.00	81. 85.00	133. 65.00	185. 125.00	237. 95.00	289. 20.00
30. 65.00	82. 140.00	134. 20.00	186. 75.00	238. 50.00	290. 45.00
31. 525.00	83. 75.00	135. 90.00	187. 25.00	239. 55.00	291. 25.00
32. 125.00	84. 100.00	136. 55.00	188. 25.00	240. 40.00	292. 30.00
33. 185.00	85. 110.00	137. 60.00	189. 20.00	241. 150.00	293. 40.00
34. 180.00	86. 75.00	138. 45.00	190. 30.00	242. 20.00	294. 275.00
35. 45.00	87. 40.00	139. 75.00	191. 25.00	243. 155.00	295. 80.00
36. 55.00	88. 50.00	140. 140.00	192. 25.00	244. 115.00	296. 55.00
37. 110.00	89. 40.00	141. 155.00	193. 370.00	245. 45.00	297. 170.00
38. 45.00	90. 70.00	142. 190.00	194. 100.00	246. 30.00	298. 55.00
39. 55.00	91. 40.00	143. 85.00	195. 80.00	247. 30.00	299. 40.00
40. 75.00	92. 35.00	144. 300.00	196. 30.00	248. 55.00	300. 65.00
41. 60.00	93. 45.00	145. 300.00	197. 35.00	249. 45.00	301. 20.00
42. 65.00	94. 70.00	146. 325.00	198. 20.00	250. 25.00	302. 40.00
43. 125.00	95. 60.00	147. 175.00	199. 50.00	251. 80.00	303. 15.00
44. 140.00	96. 75.00	148. 54.00	200. 45.00	252. 75.00	304. 20.00
45. 175.00	97. 50.00	149. 105.00	201. 40.00	253. 30.00	305. 65.00
46. 30.00	98. 135.00	150. 80.00	202. 40.00	254. 35.00	306. 120.00
47. 127.50	99. 130.00	151. 20.00	203. 55.00	255. 20.00	307. 25.00
48. 10.00	100. 45.00	152. 180.00	204. 10.00	256. 25.00	308. 25.00
49. 25.00	101. 25.00	153. 210.00	205. 25.00	257. 160.00	309. 40.00
50. 12.50	102. 65.00	154. 50.00	206. 95.00	258. 80.00	310. 220.00
51. 17.50	103. 55.00	155. 17.50	207. 325.00	259. 110.00	311. 45.00
52. 47.50	104. 25.00	156. 30.00	208. 30.00	260. 30.00	

(Continued on page 11)

NCC GOLF OUTING

Planned for Thursday, June 26, is the 1997 NCC Golf Outing to be held at the River Greens Golf Course, located in West Lafayette, Ohio. Green fees with cart are \$27.00. Four sets of rental clubs will be available. All NCC members are encouraged to participate no matter what your level of play. To ensure morning tee times, please call Fred Schaefer, the outing coordinator, at (937) 433-4128, or drop a note to Fred Schaefer, NCC Inc., P.O. Box 416, Cambridge, OH 43725-0416. There will be a get-acquainted session, drinks and lunch (Dutch treat) after the game in the club's dining room, providing participants a chance to lie about their game. Details about the departure time from Cambridge and meeting place will be forthcoming. Be the first to call Fred reserving your spot and win a prize!

AUCTION CATALOG CORRECTIONS

- | | |
|---------------------------------|---------------------------------------|
| #7 11 instead of 9 | #240A Tomato NCC paper-weight \$65.00 |
| #9 Low sherbets (7) | #284A Mandarin cakestand \$80.00 |
| #31 4 mugs not 34 | #339 Minor flake |
| #71 4 instead of 3 | #340 9 instead of 8 |
| #162 (1) tumbler
(2) sherbet | #341 5 instead of 6 |
| #179 (1) | #362 (4) |
| #189 (4) | #343 #3400 instead of #3130 |
| #214 Minor roughness | |

312. 20.00	336. 5.00	360. 145.00
313. 65.00	337. 25.00	361. 65.00
314. 80.00	338. 40.00	362. 30.00
315. 55.00	339. 40.00	363. 180.00
316. 80.00	340. 80.00	364. 50.00
317. 65.00	341. 35.00	365. 225.00
318. 105.00	342. 40.00	366. 35.00
319. 70.00	343. 50.00	367. 25.00
320. 100.00	344. 120.00	368. 70.00
321. 35.00	345. 75.00	369. 75.00
322. 35.00	346. 150.00	370. 75.00
323. 40.00	347. 35.00	371. 30.00
324. 30.00	348. 25.00	372. 40.00
325. 35.00	349. 35.00	373. 105.00
326. 55.00	350. 45.00	374. 95.00
327. 50.00	351. 15.00	375. 65.00
328. 50.00	352. 50.00	376. 50.00
329. 35.00	353. 10.00	377. 320.00
330. 40.00	354. 40.00	378. 125.00
331. 145.00	355. 35.00	379. 115.00
332. 80.00	356. 112.50	380. 95.00
333. 30.00	357. 10.00	381. 30.00
334. 45.00	358. 56.00	382. 12.50
335. 120.00	359. 20.00	383. 35.00

(PRESIDENT'S MESSAGE - Continued from page 3)

board may sell pieces at the club's discretion but that the proceeds would be directed to further glass acquisitions (or the building fund or the endowment if that is where you would like the cash directed).

See what I mean? This whole process is a bit complex. No wonder we have so many lawyers! (Sorry Joe and Russell, no offense intended.)

We will have an endowment established. However, that does not restrict the ability to finalize smart estate planning now. It is better that we all have control over things now rather than leave it up to some probate situation.

At present, members can direct their wishes in many directions:

- The Building Fund* (for expansion/relocation)
- Glass Acquisitions*
- Museum Operations*
- Museum Collection* (with the aforementioned flexibility)

Or, you can designate a specific wish: a dedicated research room, additional mold acquisition, sponsor displays or special events, you name it and let's talk about it.

Planned giving is a sensitive subject. The individual's confidences must be protected. As such, we will gladly establish an endowment/planned giving committee of senior, sensitive members who can work with you to build a plan that is right for you and your family. I already have a start on a team to help lead this process, among them - Clarke West and Emil Kleeman. I gladly will accept additional volunteers.

I love Cambridge Glass. It has made a difference in my life. How many hours of fun and enjoyment has it given me (not counting the number of hours spent on board of directors' business!)? For sure, I want to remember the organization in some way. I want it to perpetuate and my gift, your gift, can help make that happen.

This is not intended as a fundraising article. Just as information sharing for a topic near and dear to many of us ... the continued success of the mission of NCC. I welcome any questions or answers you may have. We want to do this right.

NATIONAL CAMBRIDGE COLLECTORS, INC.
24th ANNUAL CONVENTION
JUNE 1997
PRELIMINARY EVENT SCHEDULE

THURSDAY, JUNE 26

9:00 a.m.	Registration Desk Opens	Pritchard Laughlin Civic Center
TBA	Golf Outing	River Greens Golf Course
9:30 a.m.	Fenton Factory Tour Departs	Pritchard Laughlin Civic Center
11:30 a.m.	Fenton Factory Tour	Fenton Art Glass Co. Factory
4:00 p.m.	Orientation Session - First Timers	Conference Room - Pritchard Laughlin Civic Center
7:00 p.m.	Picnic	Pool Side - Best Western Motel

FRIDAY, JUNE 27

9:00 a.m.	Coffee With Cambridge	National Cambridge Collectors, Inc. Museum
9:00 a.m.	Registration Desk Opens	Pritchard Laughlin Civic Center
1:30 p.m.	Cambridge & The 1950s - Mark Nye	Conference Room - Pritchard Laughlin Civic Center
2:30 p.m.	To be announced	Conference Room - Pritchard Laughlin Civic Center
4:30 p.m.	Antique Show Opens	Exhibit Hall - Pritchard Laughlin Civic Center
7:30 p.m.	Convention Chairman's Reception - Cash Bar	Galleria - Pritchard Laughlin Civic Center
8:00 p.m.	Friday Night Supper	Galleria - Pritchard Laughlin Civic Center
9:00 p.m.	Mini-Auction	Galleria - Pritchard Laughlin Civic Center

SATURDAY, JUNE 28

7:00 a.m.	Flea Market Opens	Beech Grove Family Development Center
11:00 a.m.	Antique Show Opens	Exhibit Hall - Pritchard Laughlin Civic Center
1:00 p.m.	To be announced	Conf. Room - Pritchard Laughlin Civic Center
3:00 p.m.	Glass Identification - Lynn Welker	Conference Room - Pritchard Laughlin Civic Center
4:00 p.m.	Bring & Brag - Lynn Welker	Conference Room - Pritchard Laughlin Civic Center
6:30 p.m.	President's Reception - Cash Bar	Galleria - Pritchard Laughlin Civic Center
7:00 p.m.	Annual Banquet Speaker - Dean Six	Galleria - Pritchard Laughlin Civic Center

SUNDAY, JUNE 29

8:30 a.m.	Buffet Breakfast	Galleria - Pritchard Laughlin Civic Center
9:30 a.m.	Annual Meeting	Galleria - Pritchard Laughlin Civic Center
11:00 a.m.	Antique Show Opens	Exhibit Hall - Pritchard Laughlin Civic Center
1:30 p.m.	Cambridge Glass Co. Workers Reunion	Pritchard Laughlin Civic Center

Have A Safe Trip Home
 See you in 1998

1997 NCC CONVENTION UPDATE

Cambridge and the 1950s Revisited

by Mark Nye, Convention Chairman

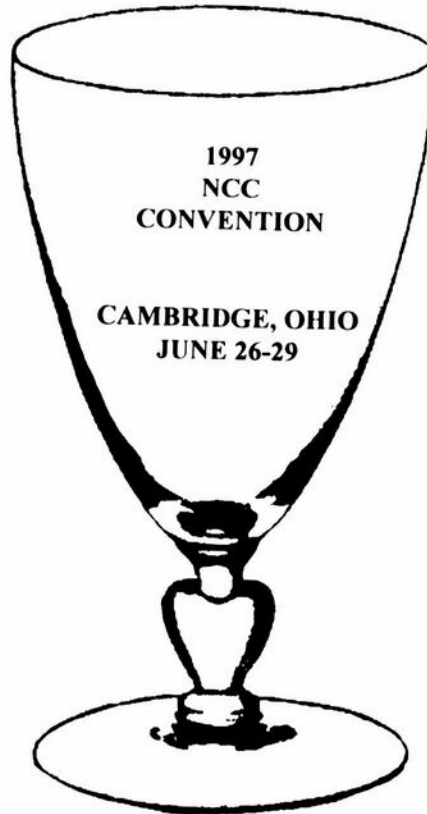
If you haven't already done so, now is the time to make plans to attend the 1997 NCC Inc. Convention, June 26-29. Motel reservations should be made as soon as possible to assure getting into your first choice of motels. The most affordable rooms are booked quickly. We were able to reserve an additional 10 rooms at the Best Western this year but these will fill up fast. All of the Cambridge motels are in the same general area and routes to all convention events are the same from any of the motels. A map and motel information was published in the March issue. Brief motel information is on Page 14.

A preliminary event schedule is published on Page 12 in this issue. A tentative schedule will be published in the June issue and the final schedule will be in the convention registration packets.

The speaker at the annual banquet will be Dean Six, a noted authority on West Virginia glass companies. The title of his talk will be "In the Company of Good Neighbors."

Once again there will be an orientation/get acquainted session for those attending their first NCC convention. It is tentatively scheduled for late Thursday afternoon. First-time attendees will have the opportunity to meet many of the officers and board members, as well as learning about how the convention "works" and the various events, plus how to find their way around Cambridge.

The theme of this year's convention is



"The 1950s Revisited." How many of you still have stored away the poodle skirts, jeans, saddle shoes, etc.? Dig in the back of that closet and dress 1950s Friday night.

While we cannot bring our own wine or other beverages into the banquet, we can bring that special goblet or wine glass to use Saturday night. Everyone is encouraged to bring a piece from their collection from which to enjoy their beverage of choice. Even water tastes better from a Nude Banquet Goblet!!!

There will be a golf outing this year. See Page 11 in this issue for details.

The Fenton tour consists of a car caravan or you can elect to meet the group there. Registration for this event is done so we can inform Fenton approximately the number of people who will be taking the tour.

Publication of the registration form will be in the May issue. The deadline for receiving the completed forms in Cambridge is June 16. Space permitting, the convention schedule will be reprinted in the May issue with any changes that have been made. Otherwise, changes and updates to the schedule will be in a convention update article.

If at all possible, please plan on remaining in Cambridge for the Sunday morning breakfast and the NCC Annual Meeting that follows. The meeting typically concludes around 11:00 a.m.

Cambridge or Bust June '1997

1997 NCC CONVENTION BRIEF MOTEL INFORMATION

The following motels are all located in Cambridge at Exit 178, Ohio Rt. 209, off of Interstate 70.

BEST WESTERN CAMBRIDGE

1945 Southgate Parkway
614-439-3581
No extra for children
One week cancellation notice
Approximately 60 rms available \$55 single or double

DEER CREEK MOTEL

2325 Southgate Parkway
614-432-6391 For reservations call 800-637-2917.
24 hour cancellation notice. Approximately 50 rms available. \$49.95 single or double. \$49.95 3-4 per room.

TRAVELODGE OF CAMBRIDGE

State Rt. 209 North
614-432-7375
One week cancellation notice.
Approximately 15 rms available. \$50 single, \$55 double with 1 bed, \$61 double 2 queen size beds.

HOLIDAY INN CAMBRIDGE

2248 Southgate Parkway
614-432-7313
One week cancellation notice. Approximately 30 rms available. \$75 weekdays. \$85 per day weekends.

DAYS INN CAMBRIDGE

2328 Southgate Parkway
614-432-5691
Approximately 45 rms available.
\$110 per night. NCC members will receive 10% discount

The following motels are located in or near Zanesville which is approximately 23 miles west of Cambridge. All are conveniently located near to Interstate 70.

Holiday Inn
I-70 at Exit 160
614-453-0771

Days Inn
I-70 at Exit 160
614-453-3400

Comfort Inn
I-70 at Exit 155
614-454-4144

Fairfield Inn by Marriott
I-70 at Exit 155
614-453-8770

Best Western
I-70 at Exit 155
614-452-4511

It is strongly recommended that NCC members and friends book their reservations NOW or as soon as possible. The most affordable rooms fill up quickly. To obtain the special rates at any of the motels, you must specify you are attending the NCC convention. Reservations at Best Western must be made by June 4.

(MEETING MINUTES - Continued from page 7)

Projects: Bill Hagerty reported that another company is in the process of doing a production run of the shaker tops and they should be available at convention time.

Publications: Mark Nye reported that the '49-'53 price guide is completed. He also reported that an update of the Rosepoint price guide is needed. Dave Rankin reported that there is a good chance the etching book will be ready by convention.

Convention: Mark reported that a motorcade to the Fenton factory is planned. Also, the Dexter City antique mall will host an open house on Thursday for Cambridge Collectors. There will be coffee and cake, and most of the dealers will be there. Mark also announced that this year's speaker will be Dean Six a glass historian. His topic will be announced at a later date.

Auction: Lynn Welker reported that tomorrow is the big day.

Convention glass show: Joy reported that the contracts are out and it will be held in the same location.

President Jones closed the meeting by wishing all those present good luck in bidding for the pieces they wanted.

IN MEMORIAM

Word has been received that long-time member Phillip R. Rutkowski from Battle Creek, MI, passed away in November 1996.

We extend our sympathy to his wife, Phyllis, and family and friends. We and others do care and share in your loss.

Bogart's
Bed & Breakfast

62 W. Main Street, New Concord
New Concord lodging in 1830 Federal
Style home, decorated with
antiques throughout.



Bogart's Antiques
7527 E. Pike, Norwich OH
Quality Antiques Bought & Sold

OWNERS Jack & Sharon Bogart
872-3514 or 826-7439

THOUGHTS FROM AN AMATEUR

by Roger Hawk

Having just returned to Illinois from my third consecutive auction, I am more and more convinced as Cambridge collectors we really do not understand one another. Upon reading the president's message in the *March Crystal Ball*, this is reinforced all the more when contrasting thoughts and feelings about NCC, Inc. Maybe it is time to give insight to what we are all about as individuals. What does Cambridge mean to you? If you allow yourself to get upset, it probably is not for you!

For the last 25 years of marriage I have been drinking from an Elaine goblet and didn't know it. Now with just five years of knowledge to be dangerous and sometimes demented, I find myself frantically searching for the pattern wherever I go. What type of person seeks out a friend who is willing to venture eight hours to Cambridge, Ohio, when we have our own Cambridge, Illinois, within 30 minutes? It has to be the collector (or impulsive buyer) who can bring the fun, mystery, excitement, and ... the expense all into balance for one's own mental health. Cambridge glass, the community, expectations.

What do people like myself do with all these impulsive buys when you are not a purist? Interview my wife who allows my course of action in a supportive manner but does not share my addiction with the same zeal. Since I have discovered Cambridge, it is senseless to have something and not use it. She has awakened mornings during varying holidays to find that quietly into the night I have been shuffling and arranging a seasonal display to justify my collector habit.

In an old home that has been facelifted numerous times, you always have unique characteristics. My favorite spot has become an old Victorian trimmed window that was closed due to an addition and has become a display area with seven shelves in our dining room. I imagine my wife had envisioned a nice assortment of books and family pictures, but, alas, she has supported my fancy instead.

Intertwined with white lights to bring out the beauty of the glass, she has watched my creativity come out in a red and green display for the holiday, all red and clear for February, and now a shrine to my heritage in Irish green (Cambridge collectors would prefer Emerald). Since I am not a purist, you must accept the fact that some of us do mix and match. Beside

my 10" swan are light green custard cups from Anchor-Hocking and green depression cups and saucers. Another shelf displays my Light Emerald ivy balls and Caprice ashtrays behind Mayfair depression bowls. It would only be fair to admit that there is even a Heisey relish and Fostoria green ivy ball with a milkglass base! However, back to the auction for 1997, I came home with the best prize of all for this Irishman - four pistachio 8-1/2" salad plates. Even though Lynn Welker repeatedly emphasized "badly scratched, badly scratched," they came at a true Irish, or maybe Scottish, price of five dollars. I couldn't be happier. The Irish bread will taste the same even with the scratches. I also added the Light Emerald 8-1/2" ivy ball to my collection, but not quite the bargain.

I might add that one does pay a price for all this shuffling and decorating. I reduced the inventory of my ivy ball collection by placing one too close to the edge of the shelf. It does help one's sense of materialism and brings it all into focus. I am sure everyone has experienced it at least once.

My final purchases before heading back to Illinois were: an Elaine 12" footed cake plate (chipped); an Elaine 14" plate, rolled edge (slightly scratched); and an Elaine 6-1/2" handled 3-part relish, gold trim. Just in case these were not enough for my wife, I bought her a strawberry scented candle!! We have not discussed the cost of the trip to date. It was worth it!

WE CLEAN CLOUDY GLASS! SATISFACTION GUARANTEED

Yes, it is true that we really can restore the interior of your cruet, vase, decanter and other *internally* etched items back to near original condition!

We do not oil, wax or cover up the sickness in any way! We actually **remove** it.

No items are too sick to clean! If we cannot clean an item to meet your satisfaction, the cleaning is **FREE!**

Send no money up front. When we return your item a bill will be enclosed for the postage and cleaning. If you are not satisfied, only the return postage is requested.

Most items clean in 6-8 weeks. All glass is handled and cleaned at your risk. Some very cloudy items may take several additional weeks.

Cruet	\$20.00	Cocktail Shaker	\$30.00
Vinegar & Oil	\$25.00	Salt Shaker (one)	\$15.00
Cologne	\$20.00	Salt Shaker (pair)	\$25.00
Decanter	\$30.00	Water Bottle	\$30.00
Vases (under 12")	\$25.00	Lavender Jar	\$20-30.00

Ship to: **Kim Carlisle & Associates**
28220 Lamong Road, Dept. C
Sheridan, IN 46069
(317) 758-5767

NATIONAL STUDY GROUP REPORTS

Study Group #13 The Miami Valley (Ohio) Study Club

The January meeting of the Miami Valley, Ohio, study group was at the Huber Heights Public Library. Thirteen members and one guest were present.

Progress on the etching book was discussed at length and the next meeting of the draft committee was scheduled.

The annual picnic to be held at the home of Phyllis Smith was scheduled for July 12 and the annual Christmas party was scheduled for December 12.

The program was a discussion of Cambridge figurals led by Georgia Otten.

Show and tell items included: 3400/2 Gold Krystol 12-1/2" bowl etched Apple Blossom with gold encrusted medallions, 3400 Heatherbloom cup and saucer, decanter with Scotty dog enamel decoration, 6004 Crown Tuscan vase with Ebony foot, Martha Washington flip bowl in Avocado, 3122 stem with Gold Krystol top and Adams type etching, Special Article 23 10-1/4" Azurite bowl with green enamel encrusted Dragon etching, 2699 Buzz Saw 5-piece condiment set signed, 3500/74 4-1/2" Ram's Head candlestick in Willow Blue, 3 oz. Regency wine with an unknown cutting, 2660 Wheat Sheaf basket, Ivory perfume with all-over gold decoration, 1316 7" Rabbit box, 469 7-1/2" comport with unknown cutting, 3500/21 12" ftd. oval bowl with Adonis rock crystal engraving, 934/481 Light Emerald bouillon cup and saucer etched 703, Caprice 184 Amethyst 12 oz. tumbler, and 1307 Amethyst candelabrum.

-Submitted by David B. Rankin

Can one desire too much of a good thing?
(Shakespeare, *As You Like It*)

Study Group #13 The Miami Valley (Ohio) Study Club

The February meeting of the Miami Valley, Ohio, study group was held at the Huber Heights Public Library. Thirteen members and one guest were present.

Progress on the etching book and the two meetings of the draft committee were discussed.

The month's program was a discussion of Decalware led by Norma Hufford.

Show and tell items included: Moonlight Blue 3-part relish, Royal Blue Mt. Vernon 3 oz. ftd. tumbler, Carmen Caprice covered candy box by Imperial, Moonlight Blue 3-part divided relish by Summit, 6" Moonlight Blue swan by Summit, Centennial #23 12-1/2" Carmen bowl, 3500/161 8" low ftd. plate gold encrusted Wildflower, 2-1/2 oz. Forest Green Barrel tumbler on 3140 Crystal stem, Light Emerald Bird on a Stump flower holder, 2892 Guernsey 13 oz. molasses can w/OK Britannia top, 3035 3 oz cocktail Peach-blo stem and foot Crystal bowl etched Gloria, Pristine 510 2-3/4" ball candlestick, 782 Willow Blue 8" vase etched #717, and 1636 peg Blue Jay.

-Submitted by David B. Rankin

Paul White, NCC Poet Displaying His Art

Paul E. White of Belmont, Ohio, currently has a one-man show at the Cafe de Arte coffeehouse/Lisa's Pizza in Barnesville, Ohio. This exhibit of his watercolors will be on display now through the end of April. It can be seen during regular business hours at the pizza shop and during the coffeehouse hours (presented by the Community Arts Alliance on the 1st and 3rd Fridays of the month - from 7:30 p.m. to 10:30 p.m.).

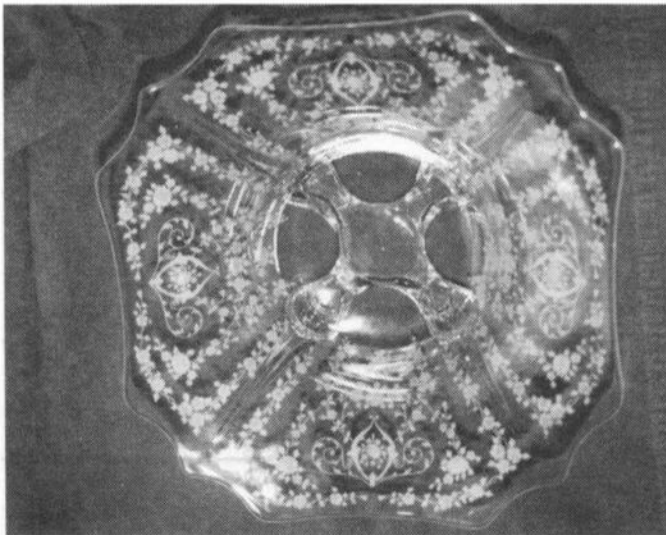
Paul is a member of NCC and has strongly supported our club. His artwork has been featured in several mini-auctions. Besides being an artist, Mr. White is an active poet. His poetry has appeared in the *Crystal Ball* (see Page 7) and is often an addition at Convention and other NCC events.

In March, Paul turned 90. Happy belated birthday, Mr. White. And thank you for sharing with us at NCC.

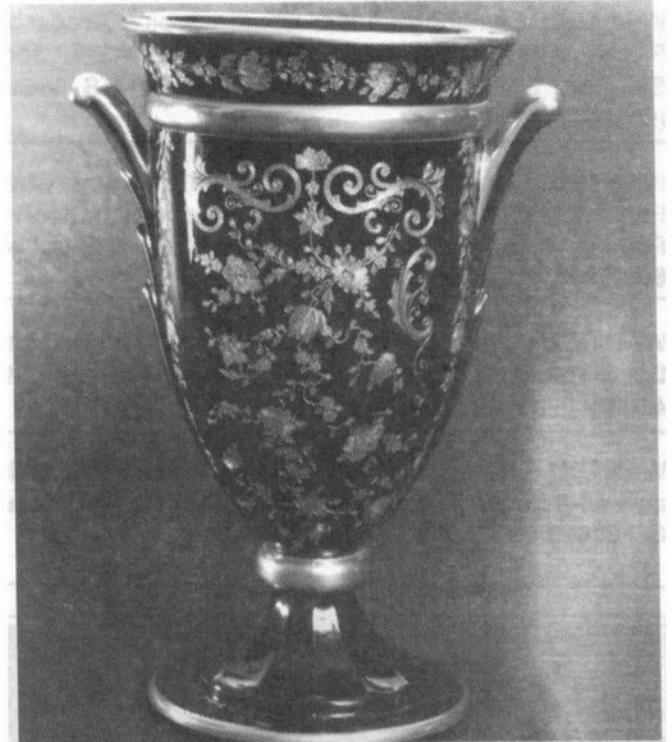
Recent Finds

We really appreciate hearing about and seeing what other people are finding. Please let us know about your recent finds. It's always great to see pictures of your finds as well!

- Crown Tuscan Rose Bowl with gold encrusted Rosepoint
- Set of Cambridge Square
- BIG set of Caprice (clear) plus a Doulton Pitcher
- Blue Cleo Sugar Shaker and tall pitcher



Light Emerald 3400/4 12-inch Bowl, Etched Diane



Ebony Urn With Gold Chantilly



Ivory Rose Lady and Bowl



Crown Tuscan 3900 10-inch Cornucopia Vase

~ GLASS ~ MARKETPLACE

Classifieds

WANTED: Cambridge Arms, Epergnnes plus Accessory Pieces. Vases #2355 any size and bobeches #327. **Jody Stacken, 3022 Quail Creek Dr., Topeka, KS 66614. (913) 272-7118.**

WANTED: Rare or unusual pieces of Cambridge Glass Especially Opaques or Carnival. Also Cambridge Art Pottery. Top prices for outstanding pieces. **Call collect 609-965-2413.**

WANTED: Caprice, Moonlight Blue, 9 1/2" dinner plate. **David Renaker, 1004 West Virginia Ave., Florence, KY 41042**

WANTED: Rare Blue Cleo pieces. **Mary Pfanenstiel new address & phone: 54 Elk Mountain Dr., Redstone, CO 81623 (970) 963-5674**



**The Bay State
Heisey Club Presents**

**Nineteenth
Annual**

Show & Sale

April 26 & 27, 1997

ANTIQUE GLASSWARE OF ALL PERIODS

Nationally Prominent Dealers Featuring:
Early American, Elegant, Depression, and European
Glassware, China, Pottery & Collectibles of all Types

Saturday 10am to 5pm & Sunday 10am to 4pm
Free Glassware Identification Sunday 12-2
John F. Kennedy Memorial Junior High School
Lexington Street, Waltham, MA

Admission \$4.00 (with this Ad \$3.50)



Sponsored By The Bay State Heisey Collectors For The Benefit Of The
National Heisey Glass Museum, Newark, OH
For Information Call 614 345 2932

CAMBRIDGE GLASS BOOKS FOR SALE

by National Cambridge Collectors, Inc.

Colors in Cambridge Glass

128 pages, 60 color plates, fully indexed.

Hardbound with price guide \$19.95

1930-1934 Cambridge Glass Co. Catalog Reprint

250-page reprint of original catalog.

Paperback with price guide \$14.95

1949-1953 Cambridge Glass Co. Catalog Reprint

300-page reprint of original catalog.

Paperback with price guide \$14.95

1956-1958 Cambridge Glass Co. Catalog Reprint

160-page reprint of original catalog. Paperback \$14.95

Cambridge Caprice

200-page book illustrating the most popular line of Cambridge Glass.

Lists color, decorations, reproductions and rare pieces.

Paperback with value guide \$19.95

1940s Cambridge Glass Co. Catalog Reprint

250-page reprint of original catalog and all known supplemental pages.

Drilled, ready for placement in your own three-ring binder.

Due to its size, the reprint does not include a value guide. \$34.95

The Home of "Near-Cut" Factory Post Card

50 cents each

Crystal Lady Video

\$15.00 each

Cambridge Rose Point by Mark A. Nye

94 pages, fully indexed. Paperback with value guide \$14.95

Value Guide

Updated value guide for Rose Point Book. Included with above.

Price alone, includes postage \$5.00

For NCC Members, these publications above at a 10% discount.

by Bill and Phyllis Smith

Cambridge Glass 1927-1929

66-page reprint of original catalog with updated price guide.

Paperback with identification guide \$7.95

by Mark A. Nye

Cambridge Stemware NEW. 2nd edition.

Same format as original \$19.95

by Mary, Lyle and Lynn Welker

Cambridge Glass Company

120 pages of reprints from eight old catalogs. Paperback \$10.00

Cambridge, Ohio Glass in Color II, Spiralbound \$5.95

by Harold and Judy Bennett

1903 Cambridge Glass Company Catalog Reprint

106-page reprint of an original catalog. Paperback \$7.50

by Degenhart Paperweight and Glass Museum

Reflections

45-page book giving a history of all 18 glass companies in Guernsey
County. Paperback with pictures \$5.00 including postage

Address orders to:

Books

National Cambridge Collectors, Inc.

P.O. Box 416

Cambridge, OH 43725-0416

Please add postage and handling to your order (first book, \$3.00; each additional book, \$1.00). Ohio residents add 6 1/2% state sales tax. Please send only check or money order, NO CASH, NO CHARGE CARDS. Dealer Discounts Available - Please Write!

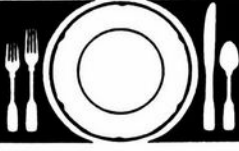
DEALERS



DIRECTORY

NOTE: When writing to the dealers listed here, please enclose a SASE!

<p>DAUGHERTY'S ANTIQUES Jerry and Shirley</p> <p>Antiques and Collectibles * Mostly Glass</p> <p>Shows & Mail Orders 2515 Cheshire No. 402-423-7426 Evenings Lincoln NE 68512</p>	<p>"HAPPINESS IS" Buddy and Kathy Stultz 3106 Warren Court, Glen Allen, VA 23060 804-672-8102</p> <p>Specializing in American Made Glass We Buy & Sell, Shows & Mail Order</p>	<p>YOU CAN ADVERTISE YOUR ANTIQUESHOP HERE!</p>
<p>Milbra's Crystal Buy & Sell Replacement and Matching Specializing in: Cambridge Milbra Long 817) 645-6066 Fostoria Emily Seate (817) 294-9837 Heisey PO Box 363, Rio Vista, TX 76093 and others</p>	<p>BUY-SELL (513) 390-3617</p> <p>Taste of Honey Glassware - Collectibles</p> <p>Clarke West 4888 Brannan Dr. E. Carole West Springfield, OH 45502</p>	<p>ARMORY ANTIQUES 168 West Main Street Plain City, OH 43064</p> <p>QUALITY THINGS Cambridge, Heisey, China, Silver, Furniture Mon-Sat 10-5 VISA/MC 614-873-4890</p>
<p>THE GLASS URN 456 West Main Street, Suite G Mesa, AZ 85201 602-833-2702</p> <p>Mail Order Shows Open Shop</p> <p>CAMBRIDGE, FOSTORIA, HEISEY, ETC.</p>	<p>ANTIQUES ON THE MALL SPECIALIZING IN CAMBRIDGE GLASS</p> <p>Bogart's - Bldg #3 - Norwich, OH</p> <p>Virginia Bennett 614-432-4483 64183 Warne Drive, Cambridge, OH 43725</p>	<p>GATEWAY ANTIQUE MALL, INC. JUST NW OF MINNEAPOLIS-ST. PAUL, MN Next to Super 8 in Rogers, MN (I-94/101 Intersection)</p> <p>85 Dealers 7 Days, 10-6 612-428-8286 ELAINE STORCK, OWNER/DIRECTOR</p>
<p>ETTELMAN'S DISCONTINUED CHINA & CRYSTAL Cambridge a Specialty</p> <p>PO Box 6491-CB Corpus Christi TX 78466 Phone 512-888-8391 Include S.A.S.E</p>	<p>D & D ANTIQUES Columbus, Ohio</p> <p>Dick Slifko SHOWS ONLY</p>	<p>YOU CAN ADVERTISE YOUR ANTIQUESHOP HERE!</p>
<p>THE GLASS CUPBOARD P.O. Box 652 West End, North Carolina 27376</p> <p>Marcia Ellis Cambridge, Duncan, Heisey 910-673-2884 Shows, Mail Order</p>	<p>JUDY'S ANTIQUES Judy Bennett 422 S. Ninth Street (Corner of Jefferson) Cambridge, Ohio 43725</p> <p>BUYING Ph. 614-432-5855 SELLING</p> <p>CAMBRIDGE GLASS MY SPECIALTY</p>	<p>We Buy Cambridge Kelvin and Heather Moore 810 Red Mill Drive Tecumseh, MI 49286 Phone 517-423-0993</p>
<p>FINDER'S ANTIQUE HOUSE New Home of Elegant Glassware 1169 Piney Forest Rd. Danville, VA 24540 (804) 836-6782 Cambridge-Heisey-Duncan-Fostoria</p>	<p>GREEN ACRES FARM 2678 Hazelton Etna Rd., Pataskala, OH 43062 (State Route 310 North)</p> <p>Sat & Sun 1-7 PM 614-927-1882 Antiques, Crystal Glass and Collectibles</p>	<p>CRYSTAL LADY 1817 Vinton St., Omaha, NE 68108</p> <p>Joann D. Hagerty Bus. 402-341-0643 Res. 402-391-6730 Specializing in Elegant Glass & Collectibles</p>
<p>ASK Specializing in Cambridge Wide variety.</p> <p>Booth #14 in the Antique Mall of Boswell 90 miles south Chicago, right on U.S. 41. 7 days a week 10-5, except Sun. 12-5 (317) 869-5525</p>	<p>FLORENCE SOLITO 54 Old Stafford Rd., Tolland CT 06084</p> <p>Stock All Elegant Glassware Mail Order Since 1978 Send Wants</p> <p>203-872-3294 Satisfaction Guaranteed</p>	<p>PENNY COURT MALL 637 Wheeling Avenue Cambridge, Ohio 100 Booths 15,000 sq. ft.</p> <p>HOURS: Daily 10-6 Sunday Noon-5 Closed: Easter, Thanksgiving, Christmas Call for Other Holiday Hours 614-432-4369</p>
<p>MICHAEL KRUMME Cambridge*Heisey*Fostoria*Duncan Miller*Paden City New Martinsville*Fenton*Tiffin*Imperial*Morgantown</p> <p>I search - Send detailed want list - all kept on file PO Box 5542 Santa Monica, CA 90409</p>	<p>YOU CAN ADVERTISE YOUR ANTIQUESHOP HERE!</p>	<p>MARGARET LANE ANTIQUES 2 E. Main St., New Concord, OH 43762 Lynn Welker 614-826-7414</p> <p>Cambridge Glass Matching Service Hours Mon-Fri 10-12 AM, 1-5 PM or by Appointment</p>
<p>GLASS RESTORATION</p> <p>BRILLIANT DON & LYNNE CRYSTAL WORMLAND ELEGANT MT. CLEMENS, MICH DEPRESSION 810-468-3519</p>	<p>ALADDIN LAMP BOOKS Free List Figurine Lamps Wanted Bill & Treva Courter 3935 Kelley Rd. Kevil, KY 42053 Phone/FAX 502-488-2116</p>	<p>DEXTER CITY ANTIQUE MALL P. O. Box 70, Dexter City, Ohio 45727 (614) 783-5921</p> <p>Located on Ohio St. Rt. 821 Between Exits 16 & 25 off I-77 Just 30 min. South of Cambridge, Ohio</p>



Stems Without Thorns

As the world's largest supplier of discontinued and active china, crystal, flatware and collectibles, Replacements, Ltd. has over 325 different patterns of Cambridge crystal.

And however much we enjoy selling pieces which were once thought irreplaceable, we love buying them as well. Thanks to people like you, our crystal inventory currently numbers in the hundreds of thousands, and the numbers keep growing every year.

So, if you've been unsuccessfully searching for that elusive piece of Cambridge - or any other type of fine crystal - call us for a free list of pieces available in your pattern. And, if you're looking to sell pieces you currently have, we can help you there, too.

REPLACEMENTS, LTD.

China, Crystal & Flatware • Discontinued & Active

1-800-REPLACE
(1-800-737-5223)

1089 Knox Road,
PO Box 26029, Dept. CB,
Greensboro, NC 27420

The **DAZE** Inc.

SPECIAL OFFER
to NCC friends
\$2.00 OFF
the 1 year subscription price
when on this form or copy of it.

The Original National monthly newspaper dedicated to the buying, selling and collecting of American made glassware china, and pottery from this century. We educate and inform you each month with feature articles by top notch writers, readers letters, club happenings, reproduction news, show reports and there are hundreds of dealers to help you fill in the missing pieces of your collection. "Keep up with what's happening" . . . Subscribe today!

Name _____

Street _____

City _____

State _____ Zip _____

1 year \$21.00 2 years \$40.00 \$2.00 Single Copy

Subscription Hot Line: 1-800-336-9927

Exp. Date _____ Card No. _____

Signature _____

Orders to:

The Daze, Inc., Box 57, Otisville, MI 48463

Please allow 30 days for your first issue - Canadian Subscribers, add \$1.00 per year and subscribe by charge card only! This Special Offer may not be combined with any other special offer.

Offer Expires December 31, 1997

National Cambridge Collectors Inc
PO Box 416
Cambridge OH 43725-0416

FIRST CLASS MAIL
U.S. POSTAGE
PAID
PERMIT NO. 1
CAMBRIDGE, OH

FIRST CLASS MAIL

Membership Renewal Notice

**If the date on your address label is 4-97,
this is your LAST ISSUE of the Crystal Ball.**

Please take a moment and renew now. Thank you!