



Cambridge Crystal Ball

Published monthly by National Cambridge Collectors, Inc.
to encourage and report the discovery of the elegant and boundless product of the
Cambridge Glass Company of Cambridge, Ohio

Issue No. 289

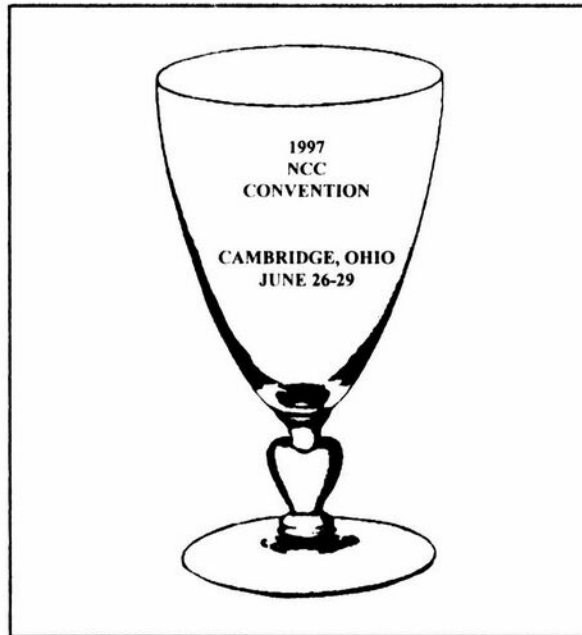
May 1997

CONVENTION 1997 UPDATE Cambridge and the 1950s Revisited

by Mark Nye, Convention Chairman

The 1997 NCC convention registration form is elsewhere in this issue. Advance registration is necessary for planning purposes. As in previous years, everyone whose registration form is received in Cambridge by May 31 will be eligible for the early-registration prize drawing. The deadline for receipt of all registration forms is June 16. Once again, there is no increase in convention fees this year. In order that we can accurately plan for the correct number of participants, registration is required for all of the events listed on the registration form. You must preregister for all events you plan to attend even if the event is offered at no charge. The latter are the factory tours, picnic and Coffee with Cambridge.

Note that registration is not required for education programs, Bring & Brag, Glass Identification and the NCC Inc. Annual Meeting that follows the Sunday morning breakfast. Registration for the breakfast is required.



packet.

There is no registration fee for children under 10 years of age; however, they will not receive a registration packet or souvenir. Meal prices for children under 10 are: Friday Night Supper - \$5.00; Banquet - \$9.00; Sunday Morning Breakfast - \$4.00. Please list children and the meals you wish them to attend on the reverse side of the registration form.

If you wish a vegetarian meal or other special meal for medical reasons, please make this known at the time you pick up your registration

(Continued on page 8)

Inside This Issue:

The Spirit of Convention
Daffodil
NCC Board Nominees and Ballot
1997 NCC Convention Update
1997 Convention Registration
New and First-Time Convention Members

Cambridge Crystal Ball

Official publication of National Cambridge Collectors Inc., a non-profit corporation with tax exempt status. Published once a month for the benefit of its members. All rights reserved; reproduction in whole or in part without written permission of NCC and the author is prohibited.

Membership is available for individual members at \$17.00 per year and an additional \$3.00 for associate members (12 years of age and older, residing in the same household). Of the master member dues, \$12.00 is credited to a one-year subscription to the *Crystal Ball*. All members have voting rights, but only one *Crystal Ball* per household. **Effective 1/1/96, multi-year memberships are available: 2 years for \$33.00, 3 years for \$49.00.** Back issues of the *Crystal Ball* are available for \$1.00 each or 12 issues for \$10.00. Complete sets for \$79.00.

1996-1997

OFFICERS AND COMMITTEE CHAIRPERSONS

President	Richard D. Jones
Vice President	Mark A. Nye
Secretary	Bud Walker
Treasurer	Charles Upton
Sergeant-at-Arms	Tarzan Deel
Acquisitions	Joe Andrejczak
Budget & Finance	Dennis Snyder
By-Laws	Bud Walker
Corresponding Secretary	Charles Upton
Long-Range Planning	Tarzan Deel
Membership	Jeff Ross
Museum Expansion/Relocation	Willard Kolb
Museum Facilities	Carl Beynon, Joe Miller
Museum Interior	J.D. Hanes, Marybelle Teeters
Non-Glass Items	Tarzan Deel
Nominating	Joy McFadden
Program	Bill Hagerty
Projects	Tarzan Deel
Publications	Mark A. Nye
Publicity	Cynthia A. Arent
Study Group Advisor	Marybelle Teeters
1997 Convention	Mark A. Nye, Bud Walker
1997 Auction	Lynn M. Welker, Joe Andrejczak
1997 Glass Show	Mary Beth Hackett, Joy McFadden
1997 Flea Market	Mike Arent
<i>Crystal Ball</i> Editor	Lorraine Weinman
<i>Crystal Ball</i> Circulation Directors ...	Lisa and Mike Neilson

National Cambridge Collectors Inc. owns and operates the **Museum of Cambridge Glass** at 9931 East Pike Road, Cambridge, Ohio. Open April through October 9AM-4PM Wednesday through Saturday and Noon-4PM on Sunday. March open Friday-Sunday. Closed November-February, Easter, July 4th.

ADVERTISING RATES

Display Rates (camera ready ads preferred)

Unit	Members	Non-Members
Full Page	\$45.00	\$60.00
3/4 Page	\$35.00	\$50.00
1/2 Page	\$25.00	\$35.00
1/4 Page	\$15.00	\$25.00
1/8 Page	\$10.00	\$15.00

Classified Rates

10 cents a word \$2.00 minimum

Abbreviations and initials count as words. Type sizes cannot be mixed in classified ads. **Payment in full must accompany all ad copy.** Contact Editor for copy assistance.

Dealer Directory

Six Line Maximum \$24.00 for 12 month contract

Cambridge Crystal Ball assumes no responsibility for items advertised and will not be responsible for errors in price, description, or other information.

Advertising copy, letters, articles, must be received by the 5th of preceding month to be considered for publication in the next issue.

Please address all correspondence (include SASE) to:

National Cambridge Collectors, Inc.
P.O. Box 416
Cambridge, OH 43725-0416

President Rick Jones	914-631-1656
Vice President Mark Nye	517-592-3578
Secretary Bud Walker	609-965-2413
NCC Museum: Phone and Fax	614-432-4245

Please notify us immediately of any address change.

Opinions or information stated in any signed article or letter printed in the *Crystal Ball* are those of the author and may not agree with National Cambridge Collectors, Inc. The Editor reserves the right to refuse and to edit any material submitted for publication to conform to the editorial style of the *Crystal Ball*. Members are encouraged to write to NCC and the *Crystal Ball* sharing their knowledge and questions!

President's Message

The Spirit of Convention

As I write this, spring has just begun. The clocks move forward an hour. The bulbs are starting to show some blooms. It is a wonderful time of renewal. Spirits of the people I meet seem brighter. It's quite amazing to see.

This is also a time where I begin to think with real anticipation of the last two weeks in June. They are by far my most concentrated period of hunting and appreciating Cambridge Glass. The convention is just around the corner.

Last year I wrote a travelogue for the *Crystal Ball* on how to potentially spend these exciting days in June. Some of you actually made this circuit and I know, because you told me, that you had a great time. I'll spare the membership a rehash of that, but my thoughts remain the same: If you don't come to Cambridge this year, you're really missing out.

We are a national club. For many of you, it is not an easy trip to make. There are distance reasons, health reasons, family reasons, and surprise, surprise, economic reasons. Sometimes in the past I've heard there were social reasons ... "I don't really know anybody, I will feel out of place."

I can't control many of the above reasons, but we can do something about the social part. Last year, we tried very hard to make first-time attendees feel welcome, to feel special. They did. Many have commented to me that it made a difference and they'd come back to Convention again.

Their penalty for that thanks is that they are now enlisted in making our next group of first-time attendees feel welcome. If we do it right, it is an expanding circle. It is part of the spirit of Convention.

We are all disparate people but we share one passion — Cambridge Glass. Convention gives you a chance to meet others who have this love. It is a chance to learn. It is a chance to buy. It is a chance to visit the permanent home of NCC and our vast collection of this special glassware.

Over a decade ago, Cindy and I visited our first convention. We didn't know what we were in for. Needless to say, we haven't missed one since. It is "spirit" that bonds people together. We are a volunteer-based organization so we depend on the good spirits of you all to help us survive.

If there is anyone who is pondering attending the convention but has questions, please give me or Bud Walker a call. Bud is working with Mark Nye to build the spirit for first-time attendees.

Pick

IN MEMORIAM

Word has been received about several members or former members of NCC.

Bill Earussi passed away on January 29, 1997. Bill is survived by his wife, Pam. They both have been active members in The Elegant Glass Collectors study group as well as NCC. Bill will be missed by many.

On March 5, 1997, Clara K. Brown passed away. She was preceded in death by her husband, Raymond L. Brown, in 1987. Clara had been a member of NCC and she and her husband were supporters of our club for a number of years.

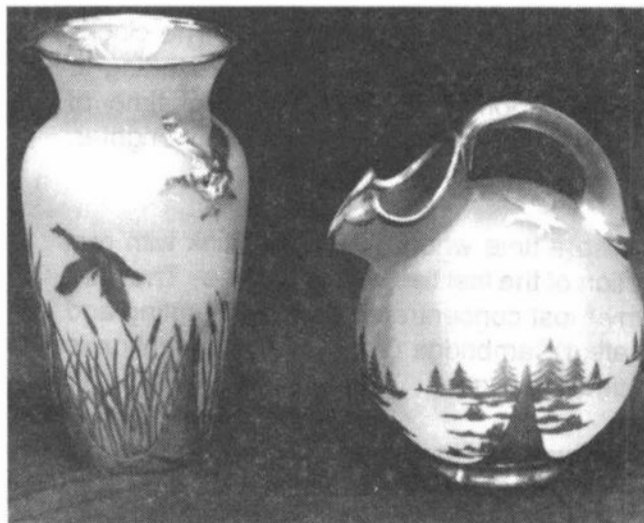
Eloise Lytle passed away on March 11, 1997. Eloise was an active member of NCC, often participated in club events, was a good friend to NCC and helped many. At the 1995 NCC Convention she won a golfing trophy.

We extend our sympathy to Pam Earussi, and to the friends and family of Bill Earussi, Clara Brown, and Eloise Lytle. We and others do care and share in your loss.



Recent Finds

We really appreciate hearing about and seeing what other people are finding. Please let us know about your recent finds. It's always great to see pictures of your finds as well!



3400 80 oz. Ball Jug and Large Vase
Both with Rockwell Silver Overlay

FOR 6¢ A DAY YOU WILL...

- G**ain knowledge of all kinds of collectible glass
- L**earn to identify "mystery" pieces in your collection
- A**tract buyers or sellers for your glass needs
- S**avor the beautiful color photography in each issue
- S**UBSCRIBE TODAY and receive a glass collectible FREE with your paid subscription!



\$22 for one year (6 issues)
Call 1-800-533-3433 to subscribe today!

Glass Collector's

P.O. BOX 553, DEPT. GC, MARIETTA, OH 45750-0553

TIFFIN GLASS COLLECTORS 12th ANNUAL SHOW & SALE

*Featuring Tiffin Glass &
Other Elegant Glassware*

SCHOOL OF OPPORTUNITY
780 E. Co. Rd. 20, Tiffin, Ohio

Fri., June 27, 1997 7:30 PM - 9:30 PM
Premier Admission - \$6.00
Saturday, June 28, 1997 10 AM - 5 PM
Sunday, June 29, 1997 11 AM - 4 PM
General Admission - \$2.00 (Good Both Days)

Information: 419-447-5505 or 419-447-4452

Tiffin *Elegance in Glass*

Daffodil

by Mark Nye

During September and October 1950, W.F. Guegold engraved several sample etchings for Cambridge. Prints of four such etchings, taken from the original etching plate, are shown with this article. Of the four, only one seems to have entered the Cambridge line as a production etching, that being what we know today as Daffodil. The flower head as shown in the etching is true to life while the "stem" and the balance of the etching hardly resemble the daffodil plant and its leaves.



The first trade journal reference to the etching Daffodil appeared in January 1952. Quoting from the advertisement published in both *CROCKERY & GLASS JOURNAL* and *CHINA, GLASS AND DECORATIVE ACCESSORIES*: "Featured This Spring in Leading Magazines - Daffodil... newest of fine Cambridge Etchings. Daffodil is crystal in its most elegant form. It is a new, fresh design aglow with brilliant light. And the graceful shapes make Daffodil especially appealing for fine table settings. Daffodil is among the royal family of Cambridge etchings nationally advertised to help you sell." (Also featured in this same advertisement was the Rock Crystal engraving Lynbrook.) No further mention of the Daffodil etching has been found in trade journal advertisements.

The first known Cambridge price list to include Daffodil is dated February 2, 1953, and bears the title "REVISED PRICE LIST FOR ETCHED GLASSWARE." Indications are a supplemental page to the 1950 price list covering Daffodil was issued, probably early in 1952. However, a copy of this page has not been found even though one for Magnolia brought out a year later, in early 1953, does exist. For the benefit of Daffodil collectors, that listing is provided with this article. All evidence indicates that Daffodil was placed solely on Crystal blanks.

(Continued on page 7)



3400/1180
5 1/4 in. Bonbon, 2 Hdl.

DAFFODIL



P. 533/445
2 pc. Mayonnaise Set



1495—11 1/2 in. 2 Hdl.
Cake Plate



P. 533
3 pc. Mayonnaise Set



3400/1181
6 in. 2 Hdl. Bonbon Plate



P. 533
5 1/2 in. Compot



6004
8 in. Fid. Vase



278
11 in. Vase, Fid.



532
8 in. Tall Compot

(DAFFODIL - Continued from page 5)

3779	Tall Goblet
3779	Tall Sherbet
3779	Low Goblet
3779	Low Sherbet
3779	Cocktail
3779	Wine
3779	Oyster Cocktail
3779	Claret
3779	Cordial
3779	Ftd. Ice Tea
3779	5 oz. Ftd. Tumbler
1170	Square Saucer and Round Cup
1174	6 in. Bread & Butter Plate
1176	8-1/2 in. Salad Plate, Square
1497	6 in. 2 part Relish
1498	8 in. 3 part Relish
1532	3 pc. Mayonnaise Set
p. 54	6-1/2 in. 2 Hdl. Low Ftd. Comport
p. 55	6 in. 2 Hdl. Low Ftd. Basket
p. 56	8 in. 2 Hdl. Low Ftd. Plate
p. 166	13-1/2 in. Cabaret Plate, r.e.
p. 214	10 in. 3 part Relish
p. 248	11 in. Celery
p. 253	Individual Sugar & Cream
p. 254	Sugar & Cream
p. 293	6 oz. Oil, stopper, pol. in.
p. 306	6 in. Candy Box & Cover, Cut Knob
p. 360	Salt & Pepper, chrome top
p. 384	11 in. Oval Bowl
p. 430	12 in. Bowl, belled
p. 532	6 in. Tall Comport
p. 533	5-1/2 in. Comport
p. 533/445	2 pc. Mayonnaise Set
p. 553	3 pc. Mayonnaise Set
p. 1491	4 pc. Twin Salad Dressing Set
p. 1495	11-1/2 in. 2 Hdl. Cake Plate
3400/141	76 oz. Jug
3400/1180	5-1/4 in. Bonbon, 2 Hdl.
3400/1181	6 in. 2 Hdl. Bonbon Plate
3900/19	2 pc. Mayonnaise Set
3900/72	6 in. 2 lite Candlestick
278	11 in. Vase, Ftd.
628	3-1/2 in. Candlestick
6004	8 in. Ftd. Vase

Prices ranged from \$24.00 a dozen for the stemware to \$93.00 a dozen for the 76 oz. jug. (Per piece the price was \$2.00 each for stemware and \$7.75 for the jug.) Note the absence of a dinner plate in the listing. As far as it is known, none was ever made. The 1170 square saucer originally came from the 3400 line as did the 1174 bread and butter and the 1176 salad plate and not from the Cambridge Square line.

A new price list for the complete Cambridge line was issued in October 1953. The Daffodil listing remained the same except for the addition of the 3900/37 sugar and cream tray. There was a price increase; stemware was now selling for \$27.00 a dozen and the 3400/141 jug was up to \$102.00 per dozen or \$8.50 each.

Production of Daffodil was not resumed when the reorganized Cambridge Glass Co. began producing glass in the spring of 1955. The March and October 1956 price lists issued by the new company had an "INACTIVE LISTING." "To further improve our service to our customers, we have inaugurated another CAMBRIDGE GLASS first by providing inactive listings. This means to you that you can assure your customers that they will always be able to obtain replacements for their fine CAMBRIDGE glassware patterns. In the regular course of business we shall accumulate your replacement orders over a period of time so that we may ship such orders at least twice a year. We shall be glad to quote you prices on inactive listings upon request. However, in view of the increased cost of producing small quantities of glass, you may reasonably expect prices of inactive patterns to run 20% to 25% higher than on similar active items. Please remember that inactive DOES NOT MEAN discontinued." Included in the available "inactive patterns" was 3779 stemware etched Daffodil. This was the last mention of the Daffodil etching. The 1958 price list had no reference to Inactive Listings or Daffodil.

The original Cambridge Glass Co. did issue catalog pages (supplements to the 1949 catalog) that illustrated Daffodil. These are contained in the 1949-53 Cambridge Catalog as reprinted by NCC, Inc. One of those pages is reprinted with this article.

~~~~~

*The greatest use of a life is to spend it  
for something that will outlast it.*

— William James

*(CONVENTION UPDATE - Continued from page 1)*

When completing your registration form, please indicate whether or not this is your first convention by entering "yes" or "no" under the heading "1st Conv." The convention committee knows most members who regularly attend conventions but for infrequent attendees we don't want to guess. We do put out a list of attendees by state and if you don't complete the address portion of the form, you will not be listed in your state.

It is strongly suggested that if you haven't already done so, make your motel reservations at once. The most affordable rooms are booked quickly. Motel information was published in the March and April issues.

Golfers interested in participating in the 1997 NCC Golf Outing at the River Greens Golf Course (flat, yes, flat picturesque course), should call Fred Schaefer at (937) 433-4128 as soon as possible. To ensure morning tee times, Fred must know by May 15 how many members are interested in playing on June 26. See Page 11 of last month's *Crystal Ball* for more information.

A second glass factory tour has been arranged. It is a tour of the Dalzell-Viking plant (the old New Martinsville Glass Co. factory) at New Martinsville, West Virginia. It is offered as an alternative to the Fenton Factory Tour. As is the Fenton tour, the Dalzell-Viking tour will be a private car caravan (car-pooling is strongly urged) and will take place on Thursday, June 26. Both tours will depart from the Pritchard Laughlin Civic Center on Thursday morning and return to Cambridge that afternoon.

Cambridge or Bust June 1997

## **1997 Calendar Planning**

Be sure to mark your calendars with these important National Cambridge Collectors, Inc. dates. The following are tentative dates for major club activities during 1997:

- June 25-29    1997 Convention
- August 23    August Quarterly Meeting/Picnic
- November 1   November Quarterly Meeting

## **NEW AND FIRST-TIME CONVENTION MEMBERS**

**by Bud Walker**

In attempting to develop an itinerary for first-timers to our convention is always a challenge. There is so much that we would like to do, but so little time to do it in. We plan on having first-timers attend a short meeting where they will be asked to introduce themselves, show us a piece of what they collect, and tell the group how they got started collecting Cambridge glass. At this meeting they will have a chance to meet Rick Jones, our president, and as many members of the board who can find time in their busy schedules to drop in and say hello.

We are going to encourage all first-timers to make a special effort to have "Coffee with Cambridge." This is held at the NCC museum. For those who don't drink coffee, there is orange juice, milk, and a breakfast bun or donut. Inside the museum will be members who will try and answer all your questions. If time permits, we will try and show you where some of the shops in the Cambridge area are located, as most shops have a good supply of Cambridge glass out at convention time. Also, we would like to show you where the flea market will be held. The Cambridge flea market is not your average flea market in that the dealers will have their best pieces of Cambridge glass for sale at reasonable prices.

We are looking forward to meeting our first-timers, as many of you will be the backbone of NCC in the coming years. If any first-timers are inclined to volunteer to help with the convention, let us know and we will find a job for you. There is no quicker way to get to know the people and become an active member and have the satisfaction of knowing that you played a part in making the convention a success. NCC is your organization and our goal is to make you feel welcome, and to have you participate in its activities.

*Tell me, and I'll forget.  
Show me, and I may not remember.  
Involve me, and I'll understand.*

— Native American Saying



# 1997 NCC CONVENTION BRIEF MOTEL INFORMATION

The following motels are all located in Cambridge at Exit 178, Ohio Rt. 209, off of Interstate 70.

## **BEST WESTERN CAMBRIDGE**

1945 Southgate Parkway  
614-439-3581  
No extra for children  
One week cancellation notice  
Approximately 60 rms available \$55 single or double

## **DEER CREEK MOTEL**

2325 Southgate Parkway  
614-432-6391 For reservations call 800-637-2917.  
24 hour cancellation notice. Approximately 50 rms available. \$49.95 single or double. \$49.95 3-4 per room.

## **TRAVELODGE OF CAMBRIDGE**

State Rt. 209 North  
614-432-7375  
One week cancellation notice.  
Approximately 15 rms available. \$50 single, \$55 double with 1 bed, \$61 double 2 queen size beds.

## **HOLIDAY INN CAMBRIDGE**

2248 Southgate Parkway  
614-432-7313  
One week cancellation notice. Approximately 30 rms available. \$75 weekdays. \$85 per day weekends.

## **DAYS INN CAMBRIDGE**

2328 Southgate Parkway  
614-432-5691  
Approximately 45 rms available.  
\$110 per night. NCC members will receive 10% discount

The following motels are located in or near Zanesville which is approximately 23 miles west of Cambridge. All are conveniently located near to Interstate 70.

Holiday Inn  
I-70 at Exit 160  
614-453-0771

Days Inn  
I-70 at Exit 160  
614-453-3400

Comfort Inn  
I-70 at Exit 155  
614-454-4144

Fairfield Inn by Marriott  
I-70 at Exit 155  
614-453-8770

Best Western  
I-70 at Exit 155  
614-452-4511

# REGISTER NOW FOR THE 1997 CONVENTION

# VOTE FOR THE NCC BOARD OF DIRECTORS

# DO IT TODAY!

# **BALLOT**

(SEE OTHER SIDE)

It is strongly recommended that NCC members and friends book their reservations **NOW** or as soon as possible. The most affordable rooms fill up quickly. To obtain the special rates at any of the motels, you must specify you are attending the NCC convention. Reservations at Best Western must be made by June 4.

# NOTICE

*First plant three rows of peas:*

*Perseverance,  
Politeness, and  
Prayer.*

*Next to them plant three rows of squash:*

*Squash gossip,  
Squash selfishness, and  
Squash indifference.*

*Then plant three rows of lettuce:*

*Let us be loyal,  
Let us be truthful, and  
Let us love one another.*

*And no garden is complete without turnips:*

*Turn up for work,  
Turn up for church, and  
Turn up with a smile!*

You will find your ballot(s) on this page. The center pages also include this year's Convention registration forms. These pages are designed to be removed from the *Crystal Ball*. See Page 13 for the tentative Convention schedule.

## Please Vote!

CUT OUT BALLOT (PHOTOCOPIES ARE NOT ACCEPTABLE). MARK THE BALLOT AND RETURN IT TO:

BALLOT  
NATIONAL CAMBRIDGE COLLECTORS INC  
PO BOX 416  
CAMBRIDGE OH 43725-0416

BALLOTS MUST BE RECEIVED BY JUNE 16.

DO NOT INCLUDE OTHER ITEMS IN YOUR BALLOT ENVELOPE. THEY WILL NOT BE OPENED UNTIL JUST PRIOR TO THE CONVENTION.

### *National Cambridge Collectors, Inc.*

Below is your ballot and slate of nominees presented for election to the NCC Board of Directors. Positions are being made vacant by expiration of terms. Biographies may be found on pages 14 and 15 in this issue (the May 1997 issue) of the *Crystal Ball*.

Please mark your ballot and return it to: **BALLOT, National Cambridge Collectors, Inc., PO Box 416, Cambridge, OH 43725-0416.** Ballots must be received by June 16, 1997.

#### OFFICIAL BALLOT

Vote for no more than three (3)  
(terms will expire in 2001)

\_\_\_ Bill Hagerty

\_\_\_ Rick Jones

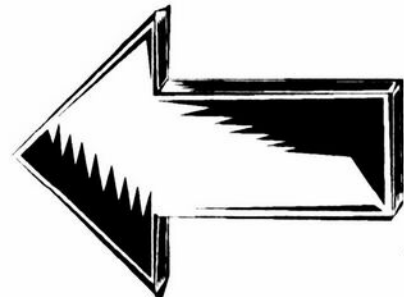
\_\_\_ Lydia McNeil

\_\_\_ Lynne Verbsky

\_\_\_ Fred Schaefer

VALIDATION # \_\_\_\_\_

# BALLOT

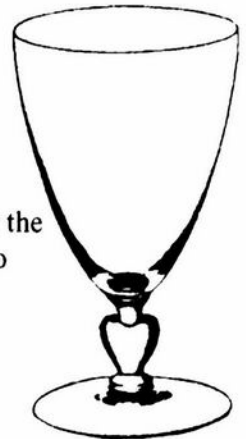


# NATIONAL CAMBRIDGE COLLECTORS, INC.

## 24th ANNUAL CONVENTION

### JUNE 26 - JUNE 29, 1997

## ADVANCE REGISTRATION FORM



Please complete this form and return it to be received no later than June 16, 1997. To be eligible for the early registration prize drawing your form must be received by May 31. Make your check payable to National Cambridge Collectors, Inc. and mail completed form and check to:

National Cambridge Collectors, Inc.  
 Convention Registration  
 P.O. Box 416  
 Cambridge, OH 43725-0416

Each person registering for the convention must pay the registration fee of \$18.00 regardless of the number of events you plan to attend. The registration fee includes unlimited admission to the NCC Inc. All Glass Show, the Thursday Night Picnic, Friday Morning Coffee with Cambridge, all educational events and entitles you to receive the Convention Booklet and the Convention Souvenir. You must register for all events you wish to attend, including those offered at no charge. For dealers in the NCC Inc. All Glass Show participating in other convention activities, the registration fee is \$13.00 (regular registration fee less show admission charge). The benefits are the same.

Please list separately each person registering. Names should be given exactly as wanted on your name tags. Please provide your NCC, Inc. membership number and indicate if this is your first convention by writing yes or no under the "1st Conv." heading. If registering more than 3, list additional members of your party on the reverse.

| NAME - PLEASE PRINT OR TYPE | MEMBER# | 1ST CONV. |
|-----------------------------|---------|-----------|
| 1. _____                    |         |           |
| 2. _____                    |         |           |
| 3. _____                    |         |           |

**Address:** \_\_\_\_\_

| Street/P.O. Box | City  | State | Zip   |
|-----------------|-------|-------|-------|
| _____           | _____ | _____ | _____ |

| Activity                        | Fee     | How Many | Total |
|---------------------------------|---------|----------|-------|
| Registration                    | \$18.00 | _____    | _____ |
| Registration (Show Dealers)     | \$13.00 | _____    | _____ |
| Dalzell Viking Factory Tour     | n/c     | _____    | n/c   |
| Fenton Art Glass Factory Tour   | n/c     | _____    | n/c   |
| Thursday Evening Picnic         | n/c     | _____    | n/c   |
| Coffee with Cambridge           | n/c     | _____    | n/c   |
| Friday Night Supper             | \$ 9.00 | _____    | _____ |
| Saturday Night Banquet          | \$16.00 | _____    | _____ |
| Sunday Morning Buffet Breakfast | \$ 7.00 | _____    | _____ |
| <b>Total</b>                    |         |          | _____ |

# 1997 CONVENTION REGISTRATION FORM - PAGE 2

## ADDITIONAL REGISTRANTS

NAME - PLEASE PRINT OR TYPE

MEMBER #    1ST CONV.

4. \_\_\_\_\_

5. \_\_\_\_\_

6. \_\_\_\_\_

## REGISTRATION - CHILDREN UNDER TEN

No. for Friday Supper:        \_\_\_\_\_ @ \$5.00        \_\_\_\_\_

No. for Banquet:                \_\_\_\_\_ @ \$9.00        \_\_\_\_\_

No. for Sunday Breakfast:     \_\_\_\_\_ @ \$4.00        \_\_\_\_\_

Total \_\_\_\_\_

If you would like to assist the Convention Committee during Convention, check here, \_\_\_\_\_

**NATIONAL CAMBRIDGE COLLECTORS, INC.**  
**24th ANNUAL CONVENTION**  
**JUNE 1997**  
**PRELIMINARY EVENT SCHEDULE**

**THURSDAY, JUNE 26**

|            |                                    |                                                   |
|------------|------------------------------------|---------------------------------------------------|
| 9:00 a.m.  | Registration Desk Opens            | Pritchard Laughlin Civic Center                   |
| TBA        | Golf Outing                        | River Greens Golf Course                          |
| 9:30 a.m.  | Fenton Factory Tour Departs        | Pritchard Laughlin Civic Center                   |
| 11:30 a.m. | Fenton Factory Tour                | Fenton Art Glass Co. Factory                      |
| 4:00 p.m.  | Orientation Session - First Timers | Conference Room - Pritchard Laughlin Civic Center |
| 7:00 p.m.  | Picnic                             | Pool Side - Best Western Motel                    |

**FRIDAY, JUNE 27**

|           |                                            |                                                   |
|-----------|--------------------------------------------|---------------------------------------------------|
| 9:00 a.m. | Coffee With Cambridge                      | National Cambridge Collectors, Inc. Museum        |
| 9:00 a.m. | Registration Desk Opens                    | Pritchard Laughlin Civic Center                   |
| 1:30 p.m. | Cambridge & The 1950s - Mark Nye           | Conference Room - Pritchard Laughlin Civic Center |
| 2:30 p.m. | To be announced                            | Conference Room - Pritchard Laughlin Civic Center |
| 4:30 p.m. | Antique Show Opens                         | Exhibit Hall - Pritchard Laughlin Civic Center    |
| 7:30 p.m. | Convention Chairman's Reception - Cash Bar | Galleria - Pritchard Laughlin Civic Center        |
| 8:00 p.m. | Friday Night Supper                        | Galleria - Pritchard Laughlin Civic Center        |
| 9:00 p.m. | Mini-Auction                               | Galleria - Pritchard Laughlin Civic Center        |

**SATURDAY, JUNE 28**

|            |                                    |                                                   |
|------------|------------------------------------|---------------------------------------------------|
| 7:00 a.m.  | Flea Market Opens                  | Beech Grove Family Development Center             |
| 11:00 a.m. | Antique Show Opens                 | Exhibit Hall - Pritchard Laughlin Civic Center    |
| 1:00 p.m.  | To be announced                    | Conf. Room - Pritchard Laughlin Civic Center      |
| 3:00 p.m.  | Glass Identification - Lynn Welker | Conference Room - Pritchard Laughlin Civic Center |
| 4:00 p.m.  | Bring & Brag - Lynn Welker         | Conference Room - Pritchard Laughlin Civic Center |
| 6:30 p.m.  | President's Reception - Cash Bar   | Galleria - Pritchard Laughlin Civic Center        |
| 7:00 p.m.  | Annual Banquet Speaker - Dean Six  | Galleria - Pritchard Laughlin Civic Center        |

**SUNDAY, JUNE 29**

|            |                                     |                                                |
|------------|-------------------------------------|------------------------------------------------|
| 8:30 a.m.  | Buffet Breakfast                    | Galleria - Pritchard Laughlin Civic Center     |
| 9:30 a.m.  | Annual Meeting                      | Galleria - Pritchard Laughlin Civic Center     |
| 11:00 a.m. | Antique Show Opens                  | Exhibit Hall - Pritchard Laughlin Civic Center |
| 1:30 p.m.  | Cambridge Glass Co. Workers Reunion | Pritchard Laughlin Civic Center                |

Have A Safe Trip Home  
See you in 1998

# NOMINEES FOR BOARD

Your 1997 Nominating Committee presents for your consideration the following biographies for each nominee seeking to be elected to the NCC Board of Directors. The three (3) elected will serve on this board for the next four (4) years, until 2001. They are listed alphabetically here. Please follow the instructions on your ballot (attached on page 10 of this issue of the *Crystal Ball*).



**BILL HAGERTY:** Bill was born in Pittsburgh, Pennsylvania, in 1932 and graduated from Charleroi High School. After four years in the U.S. Navy and two years of college at Washington & Jefferson in Washington, Pennsylvania, he worked and retired from United Parcel Service after 31 years.

His wife, Joann, owns the Crystal Lady Antique Shop in Omaha, Nebraska. They have four children and two grandchildren.

Bill has been collecting Cambridge Glass since 1956 as RosePoint was the pattern chosen by his wife.

Bill says, "I would like to serve on the board of directors to help make the club and museum grow. I still believe that at least \$15.00 is not too much to pay for a piece of Cambridge Glass. Thank you for voting."



**RICHARD D. (RICK) JONES:** Rick suffers from CGD ... Cambridge Glass Disorder. He's known about it for more than 10 years. Heaven knows he tried to control it but to no avail. At first, he just admired Cambridge. Then, he'd buy a piece here and there. Once you got three pieces of anything it "became a collection." Soon the fever spread. Graduation from antique shows led to glass shows which led to flea markets which led to conventions. Now he's even back to going to antique shows too. It's a vicious cycle. But, it's one that has given him more enjoyment than anything except his wife and dogs.

To help endow his behavior, he has a job. Rick is managing partner of a small consulting firm called The Douglas/Jones Group. They largely work with major publishing companies like Time and National Geographic on a variety of sales development, strategy, and research issues. This start-up business just entered its fifth year; so far so good.

If re-elected to the N.C.C. Board, he will dedicate himself to helping build member benefits and create an even more secure future for N.C.C. into the new millennium. Volunteer organizations require the help of dozens of people if we want our mission to sustain, survive, and flourish. All members benefit greatly. Rick is proud to be a member of N.C.C. and welcomes the chance to do his part. He and his wife, Cindy, live in the newly named Sleepy Hollow, NY, with their three Keeshond dogs, Molly, Casey, and new addition, BeBe (short for *basketball!*), born 10/1/96.



**LYDIA M. MCNEIL:** Lydia first joined the Cambridge club in 1980 and has attended almost every convention since as a dealer (Sentimental Journey Antiques). She first became interested in Cambridge Glass when she and her husband were fortunate enough to locate and purchase a full set of Cambridge Diane in Moonlight Blue! The love affair with Cambridge Glass began then and has never diminished. She continues to sell Cambridge but has an extensive collection of her own. She especially enjoys the figurals and accessory items.

Lydia retired from work as an insurance adjuster in 1988. She is currently a member of the board of directors of the NDGA as southeast regional director. She and her husband are also members of several glass clubs nationwide. Lydia believes strongly in club membership and support.

(NOMINEES - Continued from page 14)

She expresses appreciation to members like Mark Nye, whose countless hours of research gleaned a treasure trove of knowledge which he has generously shared with us all through numerous books, and to Lynn Welker, who has given so much of his time, expertise, and the loan of some of his fabulous collection (on display at the Cambridge club museum).

Lydia and her husband, Cliff, live in Florida. They have two sons and a new grandson.



**LYNNE R. VERBSKY:** Lynne joined the N.C.C. in October 1990 when she attended her first glass show and Bill and Phyllis Smith were the guests. After such a wonderful experience, she made sure to come to the June 1991 convention and has not missed the N.C.C. convention or auction since. The Cambridge convention is and always will be her favorite time of the year.

Lynne was born in Lakewood, Ohio, and has lived in Ohio all of her life. She attended Lutheran High School West and then went on to the University of Akron to receive associate degrees in data processing and in secretarial science. Her career in computers began while going to school in Akron and working at Goodyear, where she was employed for seven years before moving back to Cleveland. She is currently a computer system manager for Crawford Fitting Co. in Solon, Ohio, where she has been employed for 11 years.

Lynne studies glass books every day as her main goal in life is to preserve glass and everything about the history of the glass industry. Lynne feels that Cambridge means the most beautiful glass, the best group of people, and the best glass convention, and this should be preserved and spread to those who are not aware of this yet. She very much appreciates being nominated to run for the N.C.C. Board of Directors and would work very hard for Cambridge, which is already most important in her life.

As her friends would tell you, Lynne's favorite pastime is glass — especially Cambridge glass. She works on adding to her collection and learning more by spending most of her weekends on the road searching. Some of her favorites are Gloria, Rosalie, Forest Green, Everglades, Bluebell, Topaz, and the opaques. She also sells all kinds of glass in five antique malls and in antique or glass shows when possible.

Lynne is single and lives in Cleveland with her dog, Chelsea. She enjoys all kinds of music, visiting family, and reading.



**FRED SCHAEFER:** Fred was born in New Orleans, LA, in 1934, and has lived in Dayton, Ohio, since 1941. He graduated from both Bowling Green State University, Ohio, and Xavier University, Cincinnati. He worked for two national business forms companies in Dayton, Ohio, before starting his own business forms distributorship there in 1964. He is still self-employed. Fred served two years active duty with the U.S. Army. He is divorced and has three grown children.

Fred has been an N.C.C. member for six years and is a member of the Miami Valley study club. He thanks Frank Wollenhaupt for motivating him to "study the shapes and colors" and for spiking his interest in collecting Cambridge glass. Fred has volunteered at past Cambridge benefit auctions, attended quarterly meetings and the annual conventions. His memberships in other collectible societies include: Fostoria, Heisey, Morgantown, The Milk Glass Society, and The Wallace Nutting Collectors Club. He supports the Montgomery County and Ohio historical societies, and The Dayton Art Institute. He is an active glass dealer in two Springfield, Ohio, malls and has done several shows.

Fred solicits your vote and welcomes your support for a position on the N.C.C. Board.

**Please Be Sure To Vote!**  
**Send Your Ballot In Today!**

# NATIONAL STUDY GROUP REPORTS

## Study Group #13 Miami Valley (Ohio) Study Group

The March meeting of the Miami Valley, Ohio, study group was held March 11 at the Huber Heights Public Library. Thirteen members were present.

The only topic for the business meeting was a discussion of the etching book.

For this month's program, Frank Wollenhaupt showed slides of Cambridge Glass taken at various Cambridge functions over the years.


Show and Tell items included: 643 Amber ash receiver, Caprice 125 relish, 3900/575 Mandarin Gold 10" cornucopia, 1330 Royal Blue sweet potato vase, pair 66 Emerald 4" ftd. shell candlesticks with dolphin stem, Victorian 3 Royal Blue 10" candlestick, 1066 Mandarin Gold ivy ball, Heirloom W63 Milk glass cream & sugar, 1917 Plainware Helio mayonnaise and liner, Peach-blo two-kid flower holder.

**-Submitted by David B. Rankin**

## Bogart's

### Bed & Breakfast

62 W. Main Street, New Concord  
New Concord lodging in 1830 Federal  
Style home, decorated with  
antiques throughout.



### Bogart's Antiques

7527 E. Pike, Norwich OH  
*Quality Antiques Bought & Sold*

OWNERS: Jack & Sharon Bogart  
**872-3514 or 826-7439**

## WE CLEAN CLOUDY GLASS! SATISFACTION GUARANTEED

**Yes, it is true** that we really can restore the interior of your cruet, vase, decanter and other *internally* etched items back to near original condition!

**We do not** oil, wax or cover up the sickness in any way! We actually **remove** it.

**No items are too sick to clean!** If we cannot clean an item to meet your satisfaction, the cleaning is **FREE!**

**Send no money up front.** When we return your item a bill will be enclosed for the postage and cleaning. If you are not satisfied, only the return postage is requested.

**Most items** clean in 6-8 weeks. All glass is handled and cleaned at your risk. Some very cloudy items may take several additional weeks.

|                   |         |                    |            |
|-------------------|---------|--------------------|------------|
| Cruet             | \$20.00 | Cocktail Shaker    | \$30.00    |
| Vinegar & Oil     | \$25.00 | Salt Shaker (one)  | \$15.00    |
| Cologne           | \$20.00 | Salt Shaker (pair) | \$25.00    |
| Decanter          | \$30.00 | Water Bottle       | \$30.00    |
| Vases (under 12") | \$25.00 | Lavender Jar       | \$20-30.00 |

Ship to: **Kim Carlisle & Associates**  
28220 Lamong Road, Dept. C  
Sheridan, IN 46069  
(317) 758-5767

### CAMBRIDGE FOR SALE:

|                                                                          |              |
|--------------------------------------------------------------------------|--------------|
| Martha Pattern Mayo & Underplate Crystal                                 | \$25.00      |
| Caprice #54 3 ftd. 10 1/2 in. Belled Bowl Crystal                        | \$30.00      |
| Caprice #61 3 ftd. 12 1/2 in. Crimped Bowl Crystal (2)                   | \$40.00      |
| Caprice #65 11 in. 2 hdl. 4 ftd. Bowl Crystal                            | \$45.00      |
| Caprice 132 Low Foot Bonbon                                              | \$30.00      |
| Caprice 146 2 hdl. Square Bowl                                           | \$12.00      |
| 4000 Line Cascade 131 8 in. 2 hdl. ftd. Bonbon                           | \$18.00      |
| 4000 Line Cascade 9" Vase Crystal                                        | \$30.00      |
| EVERGLADE 2 lite Candlesticks (Pr.) Crystal                              | \$120.00     |
| Crown Tuscan 3900 10 in. Cornucopia Vase                                 | \$80.00      |
| Ivy Bowl #1236 7 1/2" tall Amber                                         | \$40.00      |
| Amethyst 9 1/4 in. Bowl w/matching stand (Triangle C)                    | \$21.00      |
| Caprice 200 Wines (4) Crystal                                            | each \$15.00 |
| Caprice No. 1357 3 holder Candelabrum w/#19 Bobeches, #1 Prisms, Crystal | \$155.00     |
| Caprice No. 1355 2 holder Candlestick                                    | \$95.00      |
| JEFFERSON Goblet Crystal                                                 | \$18.00      |
| Caprice La Rosa #184 12 oz. Tumbler                                      | \$45.00      |

Shipping Extra  
**Mary Jane's Antiques**  
2653 Burgener Drive  
Decatur, IL 62521-4806  
217-422-5453  
Mary Jane Humes



8th Annual Convention  
**Old Morgantown Glass**  
**Show & Sale**




*Featuring "Morgantown" & Other Glassware of A Bye-Gone Era*

**June 13, 14, & 15**  
**St. Mary's Peace Hall, Star City**  
**Morgantown, West Virginia**  
 (I-79 Exit 155 1 mile)

**Friday** 6 pm - 9 pm — Premier Show & Sale  
 \$10.00 Special Admission

**Saturday** 9 am - 5 pm — Show & Sale  
 1 pm — Educational Seminar  
 6:30 pm — Convention Banquet\*  
*\*Advance Reservations Required at*  
 P. O. Box 894, Morgantown, WV 26507-0894  
 or phone (304) 292-9400

**Sunday** 12 noon - 4 pm — Show & Sale

*Dealer Inquiries:* Jim Leasure, (412) 225-8445

\$3.00 General Admission (Good Sat. & Sun.)

*Public Invited To All Events* *Parking At Door*

**Fostoria Glass**  
*Society* Presents  
 17th Annual

**FOSTORIA CONVENTION**

*"A Rainbow of Colors"*  
**June 13, 14 & 15, 1997**

DEL NORONA MUSEUM  
 Eighth Street & Jefferson Avenue  
 Moundsville, West Virginia

**Show and Sale**

Friday, June 13 — Premier — 6:00 to 9:00 p.m.  
 Admission \$8.00

Saturday, June 14 — 11:00 a.m. to 5:00 p.m.

Sunday, June 15 — 11:00 a.m. to 4:00 p.m.

Admission \$3.00

for more information, contact: Tom (304) 737-2006

**Glass Auction**

Saturday, June 14 — 6:00 p.m. (Preview 5:00 p.m.)  
 for more information, contact: Larry (304) 845-5711

**Glass Flea Market**

Sunday, June 15 — 8:00 a.m. — Admission \$7.50  
**FREE** admission — 10:00 a.m.  
 for more information, contact: Clara (304) 845-3897

Benefitting the Fostoria Glass Museum  
 Moundsville, WV (304) 845-9188

**HEISEY COLLECTORS OF AMERICA, INC.**

*27 Annual*

**ELEGANT GLASS SHOW**

Celebrate the legacy of A. Heisey & Company with  
*50 prominent dealers from across the US*

Preview—  
**Wednesday,**  
**June 18, 1997**

— \$10 —

Regular Hours—  
**Thursday,**  
**June 19, 1997**

**Friday,**  
**June 20, 1997**

**12 noon**  
**to 5 p.m.**  
 — \$4 —

— Free —  
**Featuring Free**  
*All-Heisey*  
**Glass Display**  
 — Free —

— Free —  
**Saturday,**  
**June 21, 1997**

**12 noon to 5 p.m.**  
**FREE Admission**

— Free —  
 Receive 50c  
*discount with card*



**OSUN-COTC Campus, Country Club Dr., Newark, Ohio**  
 30 miles east of Columbus off Ohio St. Rt. 16  
 For more information call (614) 345-2932  
*Proceeds benefit The National Heisey Glass Museum*



**21st ANNUAL**  
**NIGCS CONVENTION**

*Imperial Carnival Glass*  
*"The Cinderella of Collectibles"*

**JUNE 6, 7 and 8, 1997**  
**ST. CLAIRSVILLE, OHIO**

**Belmont Technical College**

(Four miles west of Hampton Inn - I-70 Exit 213)

**GLASS SHOW AND SALE**

Saturday, June 7 • 1-5 p.m.      Sunday, June 8 • 11-3 p.m.  
 Admission: \$2.00 Donation

**FREE PUBLIC SEMINARS**

Saturday, June 7 • 10-11:30 a.m.      Sunday, June 8 • 9:30-10:30 a.m.

**Conversation**  
**With Former**  
**Imperial Employees**

**"Carnival Glass"**  
**Carl O. Burns, Author of**  
**"Imperial Carnival Glass"**

**GLASS ID** • Sunday, June 8 • 12:30-2 p.m.

**Open to the Public** • **BANQUET** • Hampton Inn/Undo's West  
 Saturday, June 7 at 6:30 p.m. - Must have reservations  
 Speaker: Robert Calhoun, Honorary Member,  
 Imperial's V.P. & General Mgr., Lenox Era

\*\*\*\*\*

**National Imperial Glass Collectors' Society, Inc.**  
 P.O. BOX 534 - BELLAIRE, OHIO 43906  
 (410) 995-1254 • (216) 442-0279 • (630) 556-4301



# ~ GLASS ~ MARKETPLACE

## Classifieds

**WANTED:** Rare or unusual pieces of Cambridge Glass Especially Opaques or Carnival. Also Cambridge Art Pottery. Top prices for outstanding pieces. **Call collect 609-965-2413.**

**FOR SALE:** 25% off remaining items in ad of the *Crystal Ball* of March 1997. Page 17. Bobeches sold, as are some of the stix. **Dick Kinsell 765-463-9724.**

**CAMBRIDGE SWANS:** Sold as a collection of 58 only. Send SASE for list of swans, the sizes, styles, signature and condition. Collection must be picked up. Will not ship. Bids close June 30, 1997. Rights of refusal on any and all bids. **Dick Kinsell, 2000 Indian Trail Drive, West Lafayette, IN 47906 765-463-9724.**

**WANTED:** Cambridge "Joan of Arc" engraved rock crystal (shown in Catalog Reprint 1949-1953). Need ALL pieces in mint condition, especially iced teas **Jean Bryan, 3620 Woodcrest Cr., Cleveland, TN 37312 (423) 472-6236.**

### Colors of Cambridge

On Thursday, March 20th, at the Haddonfield Adult School, Bud and Anna Walker did a two-hour presentation on the history and the colors of Cambridge Glass. They were assisted by Don and Bonnie Stevens. In addition to talking about her collection, Bonnie told the group how they came to be interested in and ultimately started their Cambridge collection. Don talked about the work he is doing in the hopes of creating an NCC web site so that information about Cambridge Glass will be available on the computer.

After talking about the more than 50 colors that Cambridge produced and showing examples of what they made and when it was made, the group was invited to come forward and examine the pieces and look at the books available to study Cambridge Glass. In addition to the books, there were back issues of the *Crystal Ball* available for those who were interested in learning more about Cambridge Glass. The group appeared to be interested, and there were numerous requests as to how they could purchase the Colors of Cambridge book.

## CAMBRIDGE GLASS BOOKS FOR SALE

*by National Cambridge Collectors, Inc.*

### Colors in Cambridge Glass

128 pages, 60 color plates, fully indexed.  
Hardbound with price guide \$19.95

### 1930-1934 Cambridge Glass Co. Catalog Reprint

250-page reprint of original catalog.  
Paperback with price guide \$14.95

### 1949-1953 Cambridge Glass Co. Catalog Reprint

300-page reprint of original catalog.  
Paperback with price guide \$14.95

### 1956-1958 Cambridge Glass Co. Catalog Reprint

160-page reprint of original catalog. Paperback \$14.95

### Cambridge Caprice

200-page book illustrating the most popular line of Cambridge Glass. Lists color, decorations, reproductions and rare pieces.  
Paperback with value guide \$19.95

### 1940s Cambridge Glass Co. Catalog Reprint

250-page reprint of original catalog and all known supplemental pages. Drilled, ready for placement in your own three-ring binder.  
Due to its size, the reprint does not include a value guide. \$34.95

### The Home of "Near-Cut" Factory Post Card

50 cents each

### Crystal Lady Video

\$15.00 each

### Cambridge Rose Point by Mark A. Nye

94 pages, fully indexed. Paperback with value guide \$14.95

### Value Guide

Updated value guide for Rose Point Book. Included with above.  
Price alone, includes postage \$5.00

**For NCC Members, these publications above at a 10% discount.**

*by Bill and Phyllis Smith*

### Cambridge Glass 1927-1929

66-page reprint of original catalog with updated price guide.  
Paperback with identification guide \$7.95

*by Mark A. Nye*

### Cambridge Stemware NEW. 2nd edition.

Same format as original \$19.95

*by Mary, Lyle and Lynn Welker*

### Cambridge Glass Company

120 pages of reprints from eight old catalogs. Paperback \$10.00

### Cambridge, Ohio Glass in Color II, Spiralbound \$5.95

*by Harold and Judy Bennett*

### 1903 Cambridge Glass Company Catalog Reprint

106-page reprint of an original catalog. Paperback \$7.50

*by Degenhart Paperweight and Glass Museum*

### Reflections

45-page book giving a history of all 18 glass companies in Guernsey County. Paperback with pictures \$5.00 including postage

### Address orders to:

**Books  
National Cambridge Collectors, Inc.  
P.O. Box 416  
Cambridge, OH 43725-0416**

Please add postage and handling to your order (first book, \$3.00; each additional book, \$1.00). Ohio residents add 6 1/2% state sales tax. Please send only check or money order, NO CASH, NO CHARGE CARDS. Dealer Discounts Available - Please Write!

## DEALERS



## DIRECTORY

NOTE: When writing to the dealers listed here, please enclose a SASE!

|                                                                                                                                                                                                                                                    |                                                                                                                                                                                                                  |                                                                                                                                                                                                                                           |
|----------------------------------------------------------------------------------------------------------------------------------------------------------------------------------------------------------------------------------------------------|------------------------------------------------------------------------------------------------------------------------------------------------------------------------------------------------------------------|-------------------------------------------------------------------------------------------------------------------------------------------------------------------------------------------------------------------------------------------|
| <p><b>DAUGHERTY'S ANTIQUES</b><br/>Jerry and Shirley</p> <p>Antiques and Collectibles * Mostly Glass</p> <p>Shows &amp; Mail Orders 2515 Cheshire No.<br/>402-423-7426 Evenings Lincoln NE 68512</p>                                               | <p><b>"HAPPINESS IS"</b><br/>Buddy and Kathy Stultz</p> <p>3106 Warren Court, Glen Allen, VA 23060<br/>804-672-8102</p> <p>Specializing in American Made Glass<br/>We Buy &amp; Sell, Shows &amp; Mail Order</p> | <p><b>YOU CAN ADVERTISE YOUR<br/>ANTIQUESHOP HERE!</b></p>                                                                                                                                                                                |
| <p><b>Milbra's Crystal</b> Buy &amp; Sell<br/>Replacement and Matching Specializing in:<br/>Cambridge<br/>Milbra Long 817) 645-6066 Fostoria<br/>Emily Seate (817) 294-9837 Heisey<br/>PO Box 363, Rio Vista, TX 76093 and others</p>              | <p>BUY-SELL (513) 390-3617</p> <p><b>Taste of Honey</b><br/>Glassware - Collectibles</p> <p>Clarke West 4888 Brannan Dr. E<br/>Carole West Springfield, OH 45502</p>                                             | <p><b>ARMORY ANTIQUES</b><br/>168 West Main Street<br/>Plain City, OH 43064</p> <p><b>QUALITY THINGS</b><br/>Cambridge, Heisey, China, Silver, Furniture<br/>Mon-Sat 10-5 VISA/MC 614-873-4890</p>                                        |
| <p><b>THE GLASS URN</b><br/>456 West Main Street, Suite G<br/>Mesa, AZ 85201 602-833-2702</p> <p>Mail Order Shows Open Shop</p> <p>CAMBRIDGE, FOSTORIA, HEISEY, ETC.</p>                                                                           | <p><b>ANTIQUES ON THE MALL</b><br/>SPECIALIZING IN CAMBRIDGE GLASS</p> <p>Bogart's - Bldg. #3 - Norwich, OH</p> <p>Virginia Bennett 614-432-4483<br/>64183 Warne Drive, Cambridge, OH 43725</p>                  | <p><b>GATEWAY ANTIQUE MALL, INC.</b><br/>JUST NW OF MINNEAPOLIS-ST. PAUL, MN<br/>Next to Super 8 in Rogers, MN<br/>(I-94/101 Intersection)</p> <p>85 Dealers 7 Days, 10-6 612-428-8286<br/>ELAINE STORCK, OWNER/DIRECTOR</p>              |
| <p><b>ETTELMAN'S DISCONTINUED<br/>CHINA &amp; CRYSTAL</b><br/>Cambridge a Specialty</p> <p>PO Box 6491-CB Corpus Christi TX 78466<br/>Phone 512-888-8391 Include S.A.S.E</p>                                                                       | <p><b>D &amp; D ANTIQUES</b></p> <p>Columbus, Ohio</p> <p>Dick Slifko SHOWS ONLY</p>                                                                                                                             | <p><b>JAMESTOWN ANTIQUES</b><br/>16 E. Washington St., Jamestown, OH 45335</p> <p>Rosepoint and Cambridge our Specialty<br/>Shows and Shop (chance or appt.)</p> <p>Buy (937) 675-6491 Sell<br/>Susan and Larry Everett</p>               |
| <p><b>THE GLASS CUPBOARD</b></p> <p>P.O. Box 652<br/>West End, North Carolina 27376</p> <p>Marcia Ellis Cambridge, Duncan, Heisey<br/>910-673-2884 Shows, Mail Order</p>                                                                           | <p><b>JUDY'S ANTIQUES</b><br/>Judy Bennett<br/>422 S. Ninth Street (Corner of Jefferson)<br/>Cambridge, Ohio 43725</p> <p>BUYING Ph. 614-432-5855 SELLING</p> <p>CAMBRIDGE GLASS MY SPECIALTY</p>                | <p><b>We Buy Cambridge</b></p> <p>Kelvin and Heather Moore<br/>810 Red Mill Drive<br/>Tecumseh, MI 49286<br/>Phone 517-423-0993</p>                                                                                                       |
| <p><b>FINDER'S ANTIQUE HOUSE</b><br/>New Home of <i>Elegant Glassware</i><br/>1169 Piney Forest Rd.<br/>Danville, VA 24540<br/>(804) 836-6782<br/>Cambridge-Heisey-Duncan-Fostoria</p>                                                             | <p><b>GREEN ACRES FARM</b><br/>2678 Hazelton Etna Rd., Pataskala, OH 43062<br/>(State Route 310 North)</p> <p>Sat &amp; Sun 1-7 PM 614-927-1882<br/>Antiques, Crystal Glass and Collectibles</p>                 | <p><b>CRYSTAL LADY</b><br/>1817 Vinton St., Omaha, NE 68108</p> <p>Joann D. Hagerty<br/>Bus. 402-341-0643 Res. 402-391-6730<br/>Specializing in Elegant Glass &amp; Collectibles</p>                                                      |
| <p><b>ASK</b><br/>Specializing in Cambridge. Wide variety.</p> <p>Booth #14 in the <i>Antique Mall of Boswell</i><br/>90 miles south Chicago, right on U.S. 41.<br/>7 days a week 10-5, except Sun. 12-5<br/>(317) 869-5525</p>                    | <p><b>SOLITO</b><br/>54 Old Stafford Rd., Tolland, CT 06084<br/>Depression Era Glass - China</p> <p><b>(860) 872-3294</b></p> <p>Florence Joe</p>                                                                | <p><b>PENNY COURT MALL</b><br/>637 Wheeling Avenue<br/>Cambridge, Ohio<br/>100 Booths 15,000 sq. ft.</p> <p>HOURS: Daily 10-6 Sunday Noon-5<br/>Closed: Easter, Thanksgiving, Christmas<br/>Call for Other Holiday Hours 614-432-4369</p> |
| <p><b>MICHAEL KRUMME</b><br/>Cambridge*Heisey*Fostoria*Duncan Miller*Paden City<br/>New Martinsville*Fenton*Tiffin*Imperial*Morgantown</p> <p>I search - Send detailed want list - all kept on file<br/>PO Box 5542<br/>Santa Monica, CA 90409</p> | <p><b>YOU CAN ADVERTISE YOUR<br/>ANTIQUESHOP HERE!</b></p>                                                                                                                                                       | <p><b>MARGARET LANE ANTIQUES</b><br/>2 E. Main St., New Concord, OH 43762<br/>Lynn Welker 614-826-7414</p> <p>Cambridge Glass Matching Service<br/>Hours Mon-Fri 10-12 AM, 1-5 PM or by Appointment</p>                                   |
| <p><b>GLASS RESTORATION</b></p> <p>BRILLIANT DON &amp; LYNNE<br/>CRYSTAL WORMLAND<br/>ELEGANT MT. CLEMENS, MICH<br/>DEPRESSION 810-468-3519</p>                                                                                                    | <p><b>ALADDIN LAMP BOOKS</b><br/>Free List<br/>Figurine Lamps Wanted<br/>Bill &amp; Treva Courter<br/>3935 Kelley Rd. Kevil, KY 42053<br/>Phone/FAX 502-488-2116</p>                                             | <p><b>DEXTER CITY ANTIQUE MALL</b><br/>P. O. Box 70, Dexter City, Ohio 45727<br/>(614) 783-5921</p> <p>Located on Ohio St. Rt. 821<br/>Between Exits 16 &amp; 25 off I-77<br/>Just 30 min. South of Cambridge, Ohio</p>                   |



## Stems Without Thorns

As the world's largest supplier of discontinued and active china, crystal, flatware and collectibles, Replacements, Ltd. has over 325 different patterns of Cambridge crystal.

And however much we enjoy selling pieces which were once thought irreplaceable, we love buying them as well. Thanks to people like you, our crystal inventory currently numbers in the hundreds of thousands, and the numbers keep growing every year.

So, if you've been unsuccessfully searching for that elusive piece of Cambridge - or any other type of fine crystal - call us for a free list of pieces available in your pattern. And, if you're looking to sell pieces you currently have, we can help you there, too.

## REPLACEMENTS, LTD.

China, Crystal & Flatware • Discontinued & Active

**1-800-REPLACE**  
**(1-800-737-5223)**

1089 Knox Road,  
PO Box 26029, Dept. CB,  
Greensboro, NC 27420

The  
**DAZE** Inc.

**SPECIAL OFFER**  
to NCC friends  
**\$2.00 OFF**  
the 1 year subscription price  
when on this form or copy of it.

The Original National monthly newspaper dedicated to the buying, selling and collecting of American made glassware china, and pottery from this century. We educate and inform you each month with feature articles by top notch writers, readers letters, club happenings, reproduction news, show reports and there are hundreds of dealers to help you fill in the missing pieces of your collection. "Keep up with what's happening" . . . Subscribe today!

Name \_\_\_\_\_

Street \_\_\_\_\_

City \_\_\_\_\_

State \_\_\_\_\_ Zip \_\_\_\_\_

[ ] 1 year \$21.00 [ ] 2 years \$40.00 [ ] \$2.00 Single Copy

**Subscription Hot Line: 1-800-336-9927**

Exp. Date \_\_\_\_\_ Card No. \_\_\_\_\_

Signature \_\_\_\_\_

### Orders to:

**The Daze, Inc., Box 57, Otisville, MI 48463**

Please allow 30 days for your first issue - Canadian Subscribers, add \$1.00 per year and subscribe by charge card only! This Special Offer may not be combined with any other special offer.

Offer Expires December 31, 1997

National Cambridge Collectors Inc  
PO Box 416  
Cambridge OH 43725-0416

FIRST CLASS MAIL  
U.S. POSTAGE  
PAID  
PERMIT NO. 1  
CAMBRIDGE, OH

# FIRST CLASS MAIL

### Membership Renewal Notice

If the date on your address label is 5-97,  
this is your **LAST ISSUE** of the Crystal Ball.

Please take a moment and renew now. Thank you!