



Cambridge Crystal Ball

Published monthly by National Cambridge Collectors, Inc.
to encourage and report the discovery of the elegant and boundless product of the
Cambridge Glass Company of Cambridge, Ohio

Issue No. 303

July 1998



Inside This Issue:

eCommerce: Changing Our Lives?
Cambridge Glass Co. at 25 Years
NEW What's In A Stem?
The Silver Figurehead
NCC Constitution
WANTED - NCC Wish List

**Flying Lady?
Or Sailing Lady, Sea Siren, Sea
Goddess, Sea Nymph???**
(See related article on page 10)

Cambridge Crystal Ball

Official publication of National Cambridge Collectors Inc., a non-profit corporation with tax exempt status. Published once a month for the benefit of its members. All rights reserved; reproduction in whole or in part without written permission of NCC and the author is prohibited.

Membership is available for individual members at \$17.00 per year and an additional \$3.00 for associate members (12 years of age and older, residing in the same household). Of the master member dues, \$12.00 is credited to a one-year subscription to the *Crystal Ball*. All members have voting rights, but only one *Crystal Ball* per household. **Multi-year memberships are available: 2 years for \$33.00, 3 years for \$49.00.**

1997-1998

OFFICERS AND COMMITTEE CHAIRPERSONS

President	Richard D. Jones
Vice President	Mark A. Nye
Secretary	Lynne Verbsky
Treasurer	Charles Upton
Sergeant-at-Arms	Tarzan Deel
Acquisitions	Kelvin Moore
Budget & Finance	Dennis Snyder
By-Laws	Bud Walker
Corresponding Secretary	Charles Upton
Technology	Tarzan Deel
Membership	Jeff Ross
Museum Expansion/Relocation	Willard Kolb
Museum Facilities	Carl Beynon, Joe Miller
Museum Interior	J.D. Hanes, Marybelle Teters
Non-Glass Items	Tarzan Deel
Nominating	Joy McFadden
Program	Bill Hagerty
Projects	Bill Hagerty
Publications	Mark A. Nye
Publicity	Cynthia A. Arent
Study Group Advisor	Marybelle Teters
1998 Convention	Mark A. Nye, Bud Walker
1998 Auction	Lynn M. Welker
1998 Glass Show	Mary Beth Hackett, Joy McFadden
1998 Glass Dash	Bud Walker
<i>Crystal Ball</i> Editor	Lorraine Weinman
<i>Crystal Ball</i> Circulation Directors	Lisa and Mike Neilson
WebMaster	Don Stevens

Internet website: www.cambridgeglass.org

National Cambridge Collectors Inc. owns and operates the **Museum of Cambridge Glass** at 9931 East Pike Road, Cambridge, Ohio. Open April through October 9AM-4PM Wednesday through Saturday and Noon-4PM on Sunday. March open Friday-Sunday. Closed November-February, Easter, July 4th.

ADVERTISING RATES

Display Rates (camera ready ads preferred)

Unit	Members	Non-Members
Full Page	\$45.00	\$60.00
3/4 Page	\$35.00	\$50.00
1/2 Page	\$25.00	\$35.00
1/4 Page	\$15.00	\$25.00
1/8 Page	\$10.00	\$15.00

Classified Rates

10 cents a word \$2.00 minimum

Abbreviations and initials count as words. Type sizes cannot be mixed in classified ads. **Payment in full must accompany all ad copy.** Contact Editor for copy assistance.

Dealer Directory

Six Line Maximum \$24.00 for 12 month contract
 Also included - Listing on our Internet site at:
www.cambridgeglass.org

Cambridge *Crystal Ball* assumes no responsibility for items advertised and will not be responsible for errors in price, description, or other information.

Advertising copy, letters, articles, must be received by the 5th of preceding month to be considered for publication in the next issue.

Please address all correspondence (include SASE) to:
 (or E-Mail NCC_Crystal_Ball@compuserve.com)

National Cambridge Collectors, Inc.
P.O. Box 416
Cambridge, OH 43725-0416

President Rick Jones	914-631-1656
	or E-Mail Caprice0@aol.com
Vice President Mark Nye	517-592-3578
Secretary Lynne Verbsky	216-661-7382
NCC Museum: Phone and Fax	740-432-4245

Please notify us immediately of any address change.

Opinions or information stated in any signed article or letter printed in the *Crystal Ball* are those of the author and may not agree with National Cambridge Collectors, Inc. The Editor reserves the right to refuse and to edit any material submitted for publication to conform to the editorial style of the *Crystal Ball*. Members are encouraged to write to NCC and the *Crystal Ball* sharing their knowledge and questions!

President's Message



eCommerce: Changing Our Lives?

Having spent most of my career in the media business, I'm always intrigued when new media vehicles emerge. Madison Avenue tends to jump on anything new and predict that it will rapidly revolutionize how people spend their time.

In the late 1970s, the new trend was Cable TV. In the early '80s, it was VCRs. Then, talk began about the 500-channel cable environment. In the early '90s, satellite dishes emerged. But the most conversation focused on the Internet.

Despite immense hype, Internet penetration of U.S. households began quite slowly. There was a strong group of early adopters who tended to be very technology-savvy people or, in many cases, teenage boys. However, the Internet did not go mainstream, according to most research, until the fall of 1996 as line speeds increased and AOL emerged as a dominant brand name.

Just 18 months later, we are at the advent of electronic commerce or eCommerce, and it seems like a good time to ponder how the Internet is changing the way collectors of elegant depression glass feed their frenzy. Also, how may this influence how a national collectors organization operates?

Glass shows have been inherently regional, restricted naturally somewhat by geography. The Internet has quite quickly created a national, 24-hour transactional medium. You can shop whenever you want by accessing www.glassshow.com. This seems to me to be a win/win situation. Dealers have constantly loaded inventory and it is available at whatever shopping time is most convenient to the customer.

As a collector, you can access this and other sites, many of which are equipped with search engines helping you zero in on exactly what you're looking for. Or, you can browse page by page to see if there is Cambridge that catches your eye.

The other phenomenon that has exploded in the past six months is the eBay auction, which seems to have taken the lead among Internet auction services. For those members without computers or Internet access, let's talk a little about how these auctions work. A "seller" posts an item for sale, usually for seven days. A buyer

registers with the service (at no cost). When you see an item you're interested in, you post a bid. You can also track who else has been bidding on a piece. If you are the successful bidder, and meet the seller's reserve, you E-mail the seller and complete the transaction in a traditional direct mail method. (Send a check or money order for the sale price plus shipping and handling, the check clears, seller ships.)

For me, this has presented a new challenge. I've tried hard to learn as many members names as I can in the past several years. Now, however, it seems like you have to learn E-mail addresses as well. Who are Wandle, Shirleesvh, bentley, and ttnal?

At this point, Internet auction prices appear very high. There are few bargains. One thing about a national network is that it brings more competition and from different pricing perspectives as Cambridge pricing has varied in different regions of the country. Smart buyers have to use real caution.

Lately I've been hearing that there are those who predict that the Internet could bring an end to glass shows. Let's look at media history. When VCRs and Pay-Per-View emerged on the media scene, various pundits predicted doom and gloom for the movie theater business. Why go to theaters when you can watch the latest flicks in the comfort of your own home and at virtually anytime? I only need to use one word to describe what's actually happened in human behavior ... Titanic.

People are innately social creatures and they enjoy going out to the movies. Same thing should hold true for the Internet. People still want personal contact.

Many of you may be reading this article at the 25th Annual Cambridge Collectors Convention while others may be reading this at home around the Fourth of July, having been unable to make the trip to Cambridge. The noteworthy thing about this is the role that fellowship plays in our lives. It is an event to attend a show and see the beautiful glass in person.

Finding new ways to buy, like the net, are great but aren't likely to replace the human joy and fun in seeing it in person. We shall see!

Pick

Directions Around Cambridge


For the benefit of those members attending their first NCC Convention and thus most likely visiting Cambridge, Ohio, for the first time, we provide the following easy directions to find your way from the motels to the Pritchard Laughlin Civic Center and the NCC Museum. Alternate directions will be in the Convention registration packet.

To get to the **Pritchard Laughlin Civic Center** from the motels on Southgate Parkway, enter I-70 West toward Columbus. Take the next exit which is #176 for U.S. 40. At the traffic light at the end of the exit road, turn right and go east. It is approximately 1/2 mile to the Civic Center which is located on the north side of the road.

To travel to the **NCC Museum**, take I-70 East towards Wheeling, WV, off of Southgate Parkway. Then take the I-77 North exit to Cleveland. Exit from I-77 onto U.S. 40 East to Old Washington. The Museum is located on your left shortly after you exit from I-77.

Alternate routes to both sites require you to follow Southgate Parkway North into downtown Cambridge, Ohio. It dead ends at U.S. 40 in front of the Guernsey County Courthouse. Turn left and follow the signs for U.S. 40 West to go to the Civic Center or turn right and follow the signs for U.S. 40 East to go to the Museum.

**VISIT THE
NCC CAMBRIDGE GLASS MUSEUM
IN CAMBRIDGE, OHIO**
I-77 & U.S. 40 East of Cambridge



**24TH ANNUAL NATIONAL DEPRESSION GLASS
CONVENTION & SHOW**

Sat., July 11, 1998, 10:00-5:00
— Sun., July 12, 1998, 11:00-4:00

Live Oak Civic Center
8101 Pat Booker Rd.
Live Oak, TX 78233-2600 (San Antonio)

Depression, Elegant and Other Collectible Glass

Admission \$4.50 - Good Both Days
(\$.50 Off With This Card)

For information:
Kent Washburn
(210)599-0635/WashburnK@aol.com
NDGA
P. O. Box 8264
Wichita, KS 67208-0264

Friday, July 10 - 6:00p.m.
Membership Meeting & Preview
Members Only @ \$8.50 per person
Membership Dues @ \$15.00 per couple



1998 Calendar Planning

Mark your calendars now with these important events during **NCC's 25th Anniversary Year:**

August 22
August Quarterly Meeting and Work Session
NCC Museum
Cambridge, Ohio

November 7
November Quarterly Meeting and
Education Program
Cambridge Country Club (tentative)
Cambridge, Ohio

NATIONAL FENTON GLASS SOCIETY, INC.
P.O. BOX 4008 MARIETTA, OH 45750

AUGUST 1, 2, 3, 1998

8TH ANNUAL CONVENTION
LAFAYETTE HOTEL, MARIETTA, OHIO
Glass Displays & Seminars —Public Invited

*Banquet & Whimsy Auction —*Annual Meeting
*Valley Gem Dinner Cruise & Auction
Fenton Museum & Factory Tours
Visit Flea Markets, Garage Sales, Antique Shops
(* Members Only—Information: (740) 374-6902

Crystal Ball Have a Rough Trip??

Have you ever received a *Crystal Ball* and discovered that some of the pages are missing? Or have there been times that you have not received an issue or it was severely damaged? Please let us know if this does happen ... we want to know.

Cambridge Glass Co. at 25 Years

by Mark Nye

Since NCC, Inc. is celebrating its 25th birthday this year, I thought I would devote a couple of articles to a review of what the Cambridge Glass Co. was doing in 1927, the year it celebrated 25 years of producing glass. Much of the material comes from trade journals and I realize a great deal of it has been published before. However, new members may not have all the past issues and "refresher courses" have never hurt anyone. Where needed, I have added clarifying information, especially when items, colors, and decorations are not clearly identified in the original material

"New Colors - Cambridge - New Shapes. New colors, new shapes, new decorations and new color combinations - these, in great array, are in the 1927 offerings of the Cambridge Glass Co. of Cambridge, Ohio. There is 'Golden Showers' a new golden color in glass, true golden color. <This color has never been positively identified. It may have been a very short-lived early version of Gold Krystal. There is no further mention of a 'yellow' during 1927. > There are the new heavy silver decorations on colored glass, exquisite in their workmanship. The complete dinner service in glass with the striking covered dishes and the stemware combination of pink bowls with light green foot and stem stand out also." CGL January 1927

"Glass dinnerware or complete table services in glass has been growing in popularity, but the Cambridge Glass Co. were surprised at the very marked attention given their dinnerware during the recent Pittsburgh Exhibit. Part of this attention, no doubt was due to the attractive design of the cover dishes.

"In adding a full line of dinnerware items to their offerings in high grade glassware, both plain and decorated, the Cambridge Glass Co. decided that unless the larger hollow pieces and the covered dishes were distinctive and attractive, it were better not to place the line before the buyers." CGL February 1927

<The line described in the preceding and in following quotes was captioned in the 1927 Cambridge catalog as "Cambridge Open Stock Table Service." It later became known as the Round Line. It, like many of the other lines and items described in this series of trade journal quotes, can be found in the Smith reprint of the 1927-29 Cambridge catalog.>

"Book ends of solidity and neatness are those made by the Cambridge Glass Co., of Cambridge, O., as new additions to their line of quality glassware for home, table and decorative uses. The bookends, as can be seen from the illustration, are of plain design and are solid glass. They can be had in the Cambridge colors of Amber-glo, Peach-Blo and emerald. The decoration shown is a basket of roses in gold and edge lines in gold. Whether plain or decorated these bookends are serviceable, practicable, and attractive." CGL March 1927

<The bookends described in the preceding are those commonly referred to today as "tombstone bookends." The decoration cannot be clearly identified from the available illustration. It resembles the basket of flowers seen in Dresden and Bordeaux etchings.>

"In the way of novelties for the department store or the gift shop, what about this well thought-out desk set illustrated herewith. It is in colored glass and comes from the Cambridge Glass Co. The set consists of four pieces and is entirely of glass. There is a corrugated rest for pens and pencils, an ink bottle with stopper, a receptacle for pins and clips and a holder for paper and letters. This new desk set is made in colored glass and can be had either plain or in a variety of gold and etched decorations. The set can be had in Amber-Glo, one of the leading Cambridge colors in glass, Peach-Blo, an outstanding pink glass and also in Emerald, an attractive green. As a gift favor out of the ordinary in glass, this desk set ought to please any woman." CGL April 1927

"...The Cambridge Glass Co., of 184 Fifth Avenue, report that they are doing very well with glass dinner sets. Certainly their lines show a wide choice in styles and prices. One of the tables <seen in their display room> is set with amber glass with a wide gold encrustation. Matching dinner set, stemware, center bowl and candlesticks in a formal arrangement are complemented with appropriate flowers. Especially when used with a lace cloth or lace doilies, the effect is very soothing to eyes long accustomed to combinations of several decorations on the dining table.

"The wide encrustation is placed on amber, green and peach dinnerware, of which sets may be combined from 100 pieces up or down. The glass covered dishes have a value to the housewife that is sometimes overlooked in

(Continued on page 6)

(CAMBRIDGE GLASS CO. - Continued from page 5)

that it is not necessary to uncover a dish to see whether it is necessary to send to the kitchen for a further supply of food. The Cambridge dinnerware includes a round 10-inch covered dish and oval ones measuring 8-3/4 inches and 12-1/2 inches. By omitting the little groove that holds the covers, these same moulds make satisfactory open dishes.

"The Cambridge line contains five different gold decorated dinnerware patterns, the wide gold encrustation mentioned above, two narrow gold encrusted bands, a Dresden flower encrustation and plain gold bands, one of them used with an etched design. There are also some etched designs without gold and the plain glass dinnerware depending upon its color and shape for its charm.

"Luncheon sets are made by etching the famous Blue Willow pattern on crystal and filling in the etched design with blue, green and pink. Matching this willow design are stemware, candlesticks, bowls, cheese and cracker sets, mayonnaise sets and handled sandwich trays."

CGL May 1927

"The Cambridge Glass Co. is unusually well equipped to supply the type of bowls, flower blocks and vases that have come to such necessary adjuncts to home decorations, especially in the summer time when garden flowers are plentiful. But these same items are not only good summer merchandise, for the increasing use of artificial flowers makes them necessary all year round. The glass figures mounted on rather massive flower blocks have probably been the most talked of Cambridge items this year. I can speak of that from experience for more telephone calls and letters have come into this office asking where the glass flower holders can be bought than have mentioned any other single item. These figures mounted flower blocks are in several sizes, some of them quite tall. There are two geisha girl figures, an eagle, and a large and small figure of a draped girl. They may be had polished or satin finished and in the regular Cambridge colors or crystal. When I visited the Cambridge show rooms today, I saw three new paneled flower bowls that have just been unpacked. There are also two new table aquariums of unusual footed shape. All of these are made in amber, green and peach."

CGL May 1927

"The 25th anniversary of the Cambridge Glass Co., Cambridge, Ohio, was celebrated recently and all the road representatives were called in to help celebrate the occasion. When the bunch gathered at the factory there was plenty doing, you bet. Those boys are live wires and it is a foregone conclusion that time did not hang heavily on their hands during their sojourn in the beautiful little Ohio city."

CGL May 1927

(To be continued)



IN MEMORIAM

We wish to extend our thoughts and sympathy to the friends and family of Bill Harbaugh.

We have received word that Bill Harbaugh passed away on March 9, 1998. He leaves his wife, Barbara C. Harbaugh, of Senecaville; three daughters, Mrs. James Albert of Grove City, Mrs. Dave Scholl of Norwich, and Mrs. Rick Warne of Senecaville; a son, Bruce Harbaugh of Senecaville; a sister, Mrs. Ed Leckrone of Mt. Perry; nine grandchildren; and a niece and nephew.

Bill became a member of NCC in 1979 and was instrumental in the NCC Museum becoming a reality in August 1982. He served as chairman of the Museum Committee from September 1980 through August 1988.

We care and share in your loss.

WE CLEAN CLOUDY GLASS! SATISFACTION GUARANTEED

Yes, it is true that we really can restore the interior of your cruet, vase, decanter and other internally etched items back to near original condition!

We do not oil, wax or cover up the sickness in any way! We actually remove it.

No items are too sick to clean! If we cannot clean an item to meet your satisfaction, the cleaning is FREE!

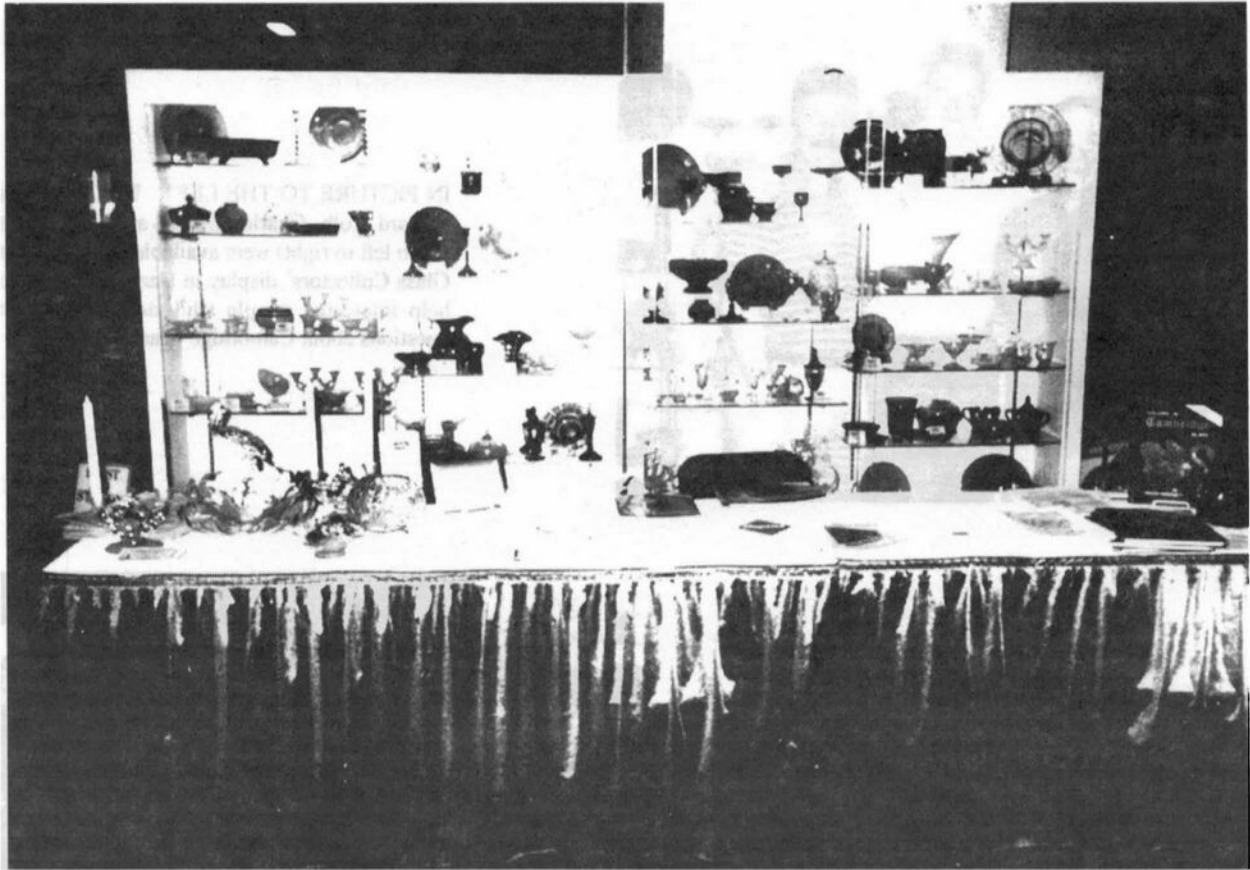
Send no money up front. When we return your item a bill will be enclosed for the postage and cleaning. If you are not satisfied, only the return postage is requested.

Most items clean in 6-8 weeks. All glass is handled and cleaned at your risk. Some very cloudy items may take several additional weeks.

Cruet	\$20.00	Cocktail Shaker	\$30.00
Vinegar & Oil	\$25.00	Salt Shaker (one)	\$25.00
Cologne	\$20.00	Salt Shaker (pair)	\$35.00
Decanter	\$30.00	Water Bottle	\$30.00
Vases (under 12")	\$25.00	Lavender Jar	\$20-30.00

Ship to: **Kim Carlisle & Associates**
28220 Lamong Road, Dept. C
Sheridan, IN 46069
(317) 758-5767

NATIONAL STUDY GROUP REPORTS



Study Group #16 Elegant Glass Collectors

The Eastern National Antiques Show and Sale at the State Farm Show Building in Harrisburg, PA, April 23-26, 1998, was the recent meeting place of the Elegant Glass Collectors study group. Thirteen members and a number of guests were in attendance. Among the guests were: Charles Upton, Willard Kolb, Rick and Cindy Jones, Lynn Welker, Tarzan Deel, Linda Johnson, Falira Lisak, Jim and Leora Leasure. Other NCC members stopped by the display.

Our group coordinated the display with the theme "Colors of Cambridge" displayed in two beautifully lit, double-wide cases. Our centerpiece display for the two book tables was composed of a stunning Blue Caprice Alpine bowl with underplate, with the tall crystal heron rising from a row of dogwood blooms. Along with the book display, we had membership information and some old copies of the *Crystal Ball* to give to interested people. Charles Upton had his Book of Patents, that he painstakingly researched and obtained copies, which added great interest. Willard

Elegant Glass Collectors study group's beautiful display at the Eastern National Antiques Show & Sale in Harrisburg, PA, this past April 23-26.

Kolb spoke to people stopping by, and Rick and Cindy Jones were available. Cindy kept us well nourished with homemade cookies, pretzels, and candy. John Corl coordinated the volunteer staffing, made framed posters, and was there throughout the setup and teardown, and all four days.

We sold many books, and received new membership applications. The dealers told us how much they appreciated our display, as it added great interest to the show. In addition, we had ongoing Show and Tell as members added to their collections and shared their finds with enthusiastic group members. We appreciate the support of all the NCC members who stopped by the booth to encourage us, to admire the beautiful Cambridge Glass, show us their pictures, and make this a most enjoyable time for all of us.

- Submitted by Pam Earussi

NATIONAL STUDY GROUP REPORTS - continued



IN PICTURE TO THE LEFT: NCC members Willard Kolb, Charles Upton, and Rick Jones (from left to right) were available at the Elegant Glass Collectors' display in Harrisburg, PA, to help interested people who stopped by with questions about Cambridge Glass.

IN PICTURE TO THE RIGHT: The theme of "Colors in Cambridge" was colorfully identified for anyone attending the Eastern National Antiques Show & Sale.



IN PICTURE TO THE LEFT: The wonderful Blue Caprice Alpine bowl and underplate and heron centerpiece added to the wonderful display cases of Cambridge glass.

What's In A Stem?

by Georgia G. Otten

Cambridge collections vary from a favorite color, etch, cutting, or a line that dominates an accumulation, but I am betting that within each collection there is a favorite stem! I should say that I am "ever hopeful" about the favorite stem because I want to propose a toast. A toast, in advance, to all the members who will help with a new idea. I hope the idea will generate interest and that results might appear regularly in the *Crystal Ball*.

The information for a column called "What's In A Stem?" could come from any member and it requires very little research! Any person could simply send in the pattern name or number, the etch name, cuffing or color, plus tell why or how they came about loving this stem. Then tell us by means of a recipe ... what's in a stem. Perhaps it is a special beverage you have concocted ... what glass did you use to make it even more special? Perhaps it is a fruit or a parfait that requires the perfect stem you have. This would be a great way to share some personal information about yourself and your collection. Also, everyone would benefit from the recipes. (Our editor could do the research part by adding a picture of the stem to go along with the information.)

Here is my contribution: My stem is 3121 etched Rose Point. In 1938, my mother had received a cocktail shaker, a serving plate, and eight cocktail glasses for a wedding gift. She gave me the glass in the late '60s. The shaker and plate remained intact, but three glasses had been broken, and of the five remaining, two were severely chipped. According to my mother's gift registry which I found many years later, she had received "Fostoria Rose Point." So those are the "Fostoria" pieces that began my Cambridge collection! And of course, I still love what my mother had!

Select the stem: 3121 Sherbet, tall or short

Then prepare:

Peppermint Mousse

- 1 envelope unflavored gelatin
- 2 T. cold water
- 1 c. milk
- 4 oz. chocolate-covered peppermint patties
- 1/2 t. vanilla extract
- 1/4 t. salt
- 1 c. whipping cream, whipped (regular or fat-free Cool-Whip is okay)

In a sauce pan, sprinkle gelatin over water, let stand for one minute. Add milk and peppermint patties; stir over low heat for five minutes or until candies and gelatin are dissolved. Add vanilla and salt. Pour into a mixing bowl; place in freezer for 15-20 minutes, stirring frequently, until mixture is cooled and thickened. Beat for one minute or until fluffy. Fold in whipped cream. Spoon into your favorite Cambridge stem!



Makes 4 servings.
(Recipe may be doubled.)

Now, do you see how very simple this can be? For any member who has said that they wanted to contribute, this is your opportunity. Come on, both guys and gals, we all want to know:

WHAT'S IN A STEM?

Triangle-C Finds

The Silver Figurehead

by Joseph A.A. Bourque Sr.

Dear Readers,

In this article, I will share a most wonderful Triangle-C* find with you. It is item No. 40, a Flower or Fruit Center of the Sea Shell line.

My daughter Darlene, an NCC* member, first saw this item depicted in an auction ad of a national weekly antique journal. She thought it would be a good Father's Day surprise gift for me. She requested an auction night phone line but was told they would not be used. She then entered a bid without knowing what the Sea Shell No. 40 was worth.

She was not sure her bid was high enough. So, she decided to forego the surprise element and speak to me about it. When I saw that Cambridge* gem in the photo ad, I got a case of Triangle-C jitters. (Bear in mind that I had been searching for an outstanding silvered Triangle-C item since the last convention, knowing that the next one would be our Silver Anniversary.) The nude lady on the front of that bowl was black in color, which appeared to be a black silk-screening decorate, but ... it could also be tarnished sterling silver, I hoped.

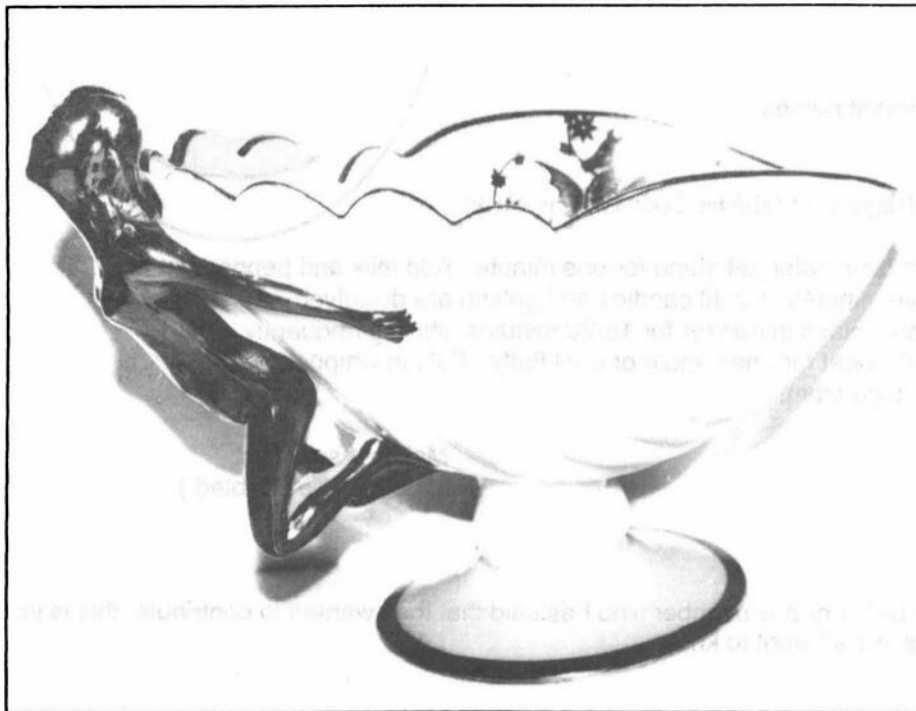


FIGURE 1

At this point, Darlene read my thoughts and volunteered, "She's covered with silver." (See Fig. No.1) Let me tell you, my heart began to beat a little faster. She added, "And both rims are silvered." (See Figs. 1-3) Those Triangle-C jitters started again. She had a third surprise to add. She said, "There are two silver decorations inside the bowl." (She had gotten all this information from the auction house.) I asked what they were. "Two silver seahorses," she replied. "Fantastic," I said adding, "Sea horses for a Sea Shell bowl." (See Fig. No. 2) At this stage I had to remind myself that I did not own this centerpiece, and there was a good chance that I never would. I figured that this item was the top silver Sea Shell piece of all the Sea Shell pieces, and would command a very high price.

She told me the amount of the bid she had left. It was a good bid for it and the fact that the auction ad only referred to it as an Art Deco bowl and made no mention of the word Cambridge gave her a fair chance at it.

On the night of the auction she received the call notifying her that she owned the "Art Deco bowl." In a few days the carton containing the silvered fruit/flower center arrived intact. I finally got to see this item. It is one outstanding silver decorated piece of Coral. The silver has a dark blue-black patina. Thank goodness no one tried to polish it. (See Fig. No. 1)

[A few words of advice on this matter. Never polish or clean silvered glass to make it shine. By doing this, you destroy the age-old patina and eventually the silver wears away or breaks away from the glass. It's good practice not to handle silver overlay glass with bare fingers especially if they are sweaty as perspiration contains salt and certain fluids that will leave an etched print on the silver.]

I got my present early so I could have enough time to write this article and share it with you in this July issue of the *Crystal Ball*. I'll take it to the NCC Convention along with some other items

(Continued on page 11)



FIGURE 2

(SILVER FIGUREHEAD - Continued from page 10)
of interest that I have been asked to bring.

This particular 10" centerpiece is listed as being No. 40 of the 3011 line, as No. 40 of the Krystalshell line, and also No. 40 of the Sea Shell line. I only needed to copy one of several listed in the catalogs, because they are all alike. (See Fig. 4) It really does not matter to me which Cambridge line it is. But I would think it to be that of the Sea Shell line because of the pair of Cambridge Seahorse decorations inside the bowl area. (See Colors in Cambridge Glass page 126. See also page 37 which lists three Seahorse examples.) I list one of these examples. (See Fig. 5) Match the Fig. 5 known Cambridge decoration with a sharp photo of one of the seahorses in Fig. 3. They are identical seahorses.



FIGURE 3

In closing, I would like to comment on this No. 40 Flower or Fruit centerpiece being listed as "The Flying Lady Bowl." See Cambridge Color Book index page 127 and pages 64 and 92. See also page 58 where it states that the flower center is frequently called a "Flying Lady" bowl. I see absolutely no indication that this nude lady is flying. I could understand her being called a Sea Siren or a Sea Goddess or even a Sea Nymph. Each time I see this nude, she reminds me of a sea sailing ship's figurehead. Were I to call her some kind of a lady, it would probably be a Sailing Lady as opposed to a Flying Lady. She's on a Sea Shell line bowl, there are two seahorse decorations inside the bowl, which has the definite shape of a large sea clam, and she definitely resembles a figurehead - a

(Continued on page 12)



FIGURE 4

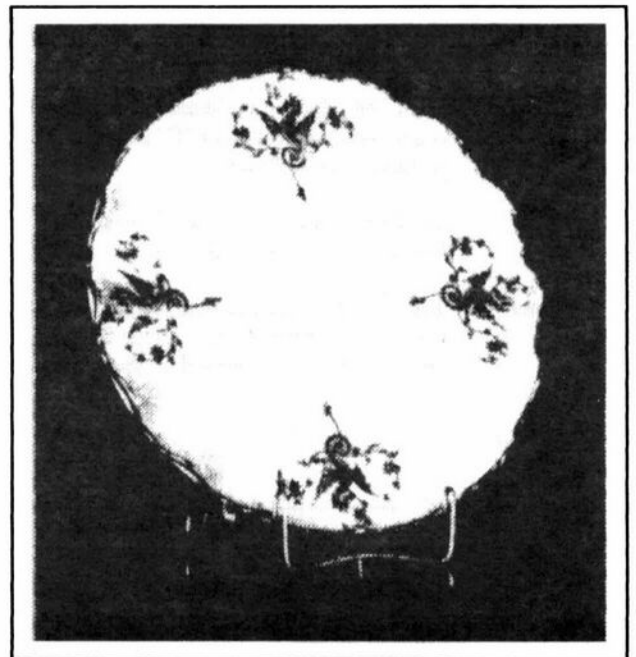


FIGURE 5

fig'ure-head, n. 1. the figure, statue, or bust on the bow of a ship.



FIGUREHEAD

FIGUREHEAD, an image (head, bust, or full figure) placed at the prow of a ship. The carvings on the stemheads of primitive ships were the first figureheads. Later, the Egyptians, Phoenicians, Greeks, and Romans employed figureheads, usually representing living creatures, as religious emblems, tokens of nationality, or symbols of the ship's name.

FIGURE 6

(SILVER FIGUREHEAD - Continued from page 11)

SILVER FIGUREHEAD at that. (See Fig. 6)

Until next time,

Joe

A special thanks to Mrs. Ayers of The Peabody Museum, Salem, Massachusetts, for helping me research figureheads.

- * Triangle-C: The Cambridge Glass Company's trademark is a triangle with the letter "C" inside it. The C stands for Cambridge.
- NCC: The first letters of the name of the club - National Cambridge Collectors.
- Cambridge: The Cambridge Glass Company of Cambridge, Ohio. Not to be confused with the Cambridge Glass Company of Cambridge, Massachusetts.

Recent Finds

We really appreciate hearing about and seeing what other people are finding and what they are doing. Please let us know about your recent finds. It's always great to hear from you and see pictures of your finds as well!

**ASK NCC:
LETTERS
FROM
MEMBERS AND
FRIENDS**

Do you have any questions, comments, suggestions, ideas, information to share with your fellow NCC members or maybe even just a story to share? Please write! We'd like to hear from YOU!



**VISIT THE NCC WEBSITE
TODAY**

WWW.CAMBRIDGEGLASS.ORG

CONSTITUTION

ARTICLE I - NAME

Section 1 The name of this organization shall be the National Cambridge Collectors, Inc., operating as a non-profit organization under charter granted by the state of Ohio.

ARTICLE II - OBJECTIVES

Section 1 The members of this organization shall meet together regularly, for the purpose of acquiring a broader knowledge of glassware manufactured by the Cambridge Glass Company in Cambridge, Ohio (1901-1954) and through instruction, discussion and study, actively promote the preservation and collection of Cambridge Glass.

Section 2 The primary objective of this organization is to establish and maintain a permanent museum in Cambridge, Ohio (Guernsey County) for displaying and study of Cambridge Glass. The organization will operate on a non-profit basis and all Moines realized will be applied to this end.

ARTICLE III - MEMBERSHIP

Section 1 There shall be two kinds of membership, namely voting and honorary.

Section 2 Voting Membership. Any person, age 12 or over, upon payment of the prescribed yearly dues is eligible to become a voting member of this organization. Other qualifications shall be as stated in the by-laws.

Section 3 Honorary Membership. Any person who has distinguished himself in an unusual and praiseworthy manner in promoting the objectives of this organization may be elected to honorary membership. Honorary members shall have the privilege of attending all meetings of the organization, but shall not be required to pay dues, or be permitted to vote or hold elective office, and they shall have no interest in any funds or property of the organization.

Section 4 No territorial limits shall be established for the organization and membership is open to all interested persons.

ARTICLE IV - MEETING AND FISCAL YEAR

Section 1 Regular meetings shall be held as provided in the by-laws.

Section 2 The annual meeting shall be held as provided in the by-laws.

Section 3 The fiscal year shall begin the first day of January each year.

ARTICLE V - OFFICERS

Section 1 The officers of this organization shall be a President, One Vice President, a Secretary and a Treasurer elected from the Board of Directors by the Board of Directors. All Officers shall hold office for one year, or until their successors are elected and qualified.

ARTICLE VI - BOARD OF DIRECTORS

Section 1 The Board of Directors shall consist of 12 Directors elected by the voting members of the organization. Terms of the office are to be as provided in the by-laws.

Section 2 To be eligible to serve on the Board of Directors, a person shall be at least 21 years of age.

Section 3 The Board of Directors shall be the governing body of the organization and shall have power to make such regulation and take such action, not inconsistent with the Constitution and By-laws as, in its judgment, may be necessary for the welfare of the organization. The decisions of the Board in all organization matters shall be final, subject only to appeal to the voting membership of the organization.

ARTICLE VII - SURRENDER OF CHARTER

Section 1 If this organization deems it desirable, by unanimous vote of the active voting membership, to terminate operation of this organization, all assets, records and Moines shall be turned over the Guernsey County (Ohio) Historical Society with the stipulation that such be used only for the study and preservation of Cambridge Glass. In the event the Guernsey County (Ohio) Historical Society cannot, or will not, comply with above stipulation, it shall be turned over the Corning Museum of Glass, Corning, New York, to be used at it's discretion.

ARTICLE VIII - AMENDMENT OF CONSTITUTION

Section 1 This constitution may be amended by a majority vote of the active members in good standing, present at the annual meeting of the organization, upon proposal by a voting member in good standing sixty days prior to the annual meeting, provided written notice of such proposed amendment shall have been given to members at least ten days prior to annual meeting.

ARTICLE IX - ADOPTION OF THE CONSTITUTION AND BY-LAWS

This Constitution shall take effect and be in force upon its adoption.

BY-LAWS

ARTICLE I - MEETINGS

Section 1 Regular Meetings. The regular meetings of the organization shall be held during the months of March, June, August, and November at such time and place as the Board of Directors shall designate.

Section 2 Annual Meetings. The annual meeting shall be held in June for installation of elected directors, the presentation of annual reports and transaction of other business. The term of directors shall officially begin at the close of business of the annual meeting. Charter directors shall hold office until their respective terms end, as per Article VII, Section 4 of the by-laws.

Section 3 Special Meetings. Special meetings of the organization may be called by the President or by a majority of the Board of Directors upon regular written notice to the Secretary at least five days in advance of said meeting.

Section 4 Quorum. The majority of the active members in good standing present shall constitute a quorum at any meeting of the organization.

Section 5 Rules of Order. Parliamentary procedure in all meetings of the organization, Board of Directors, and Committees shall be in accordance with the latest revised Robert's Rules of Order if not inconsistent with the by-laws.

ARTICLE II - DUTIES OF OFFICERS

Section 1 President. The President shall appoint all Committees, shall preside at all meetings of the organization and the Board of Directors, and shall perform such other duties as ordinarily pertain to such office. The President shall be ex-officio member of all committees except the nominating committee. He shall, immediately upon taking office, appoint a Sergeant-at-arms.

In the event a vacancy exists in the office of President, the Vice President shall assume the office and title of President during the unexpired term of the President. The President shall furnish bond in the amount determined by the Board of Directors, the cost of which bond shall be paid by the organization.

Section 2 Vice President. The Vice President shall have the duty of familiarizing himself with all organization affairs. He shall work under and in cooperation with the President and shall preside at meetings in the absence of the President.

Section 3 Secretary. It shall be the duty of the Secretary to keep the official record of all members, voting and honorary, provide verification of voting members as required, record the attendance at meetings of the organization, record and preserve the minutes of such meetings, make the required reports, and perform such other duties as customarily pertain to such office.

Section 4 Treasurer. It shall be the duty of the Treasurer to have custody of all funds, accounting for same to the organization at its annual meeting and at any other time upon demand by the Board of Directors and to perform such other duties as pertain to this office. He shall collect all dues and funds of the organization and deposit them in bank or depository named by the Board of Directors. Upon his retirement from office, he shall turn over to his successor or to the President, all funds, books and accounts, or any other organization property in his possession. The Treasurer shall furnish bond in an amount determined by the Board of Directors, the cost of which bond shall be paid by the Organization.

Section 5 Salary of Officers. All the officers shall serve without compensation.

ARTICLE III - BOARD OF DIRECTORS

Section 1 Meetings. The President shall be Chairman of the Board. He shall call regular meetings of the Board at least quarterly. He shall call a special meeting within five days after receiving a written request from three or more board members.

Section 1 Functions (a) The Board shall be responsible for the appropriation of all funds of the organization and shall, through the President or other duly authorized member of the Board, approve all vouchers before payment by the Treasurer. It shall designate the bank or depository in Guernsey County, Ohio for funds of the organization, approve all investments of funds of the organization and determine the amount of the bond which shall be given by the President and Treasurer. It shall receive and approve Budget and the annual audit of the financial transactions of the organization. (b) It shall pass on all projects recommended by the Project committee, which must be approved by a two-thirds vote of the entire Board. (c) It shall pass upon all grievances, defaults and complaints by or against a member, and may take such action as it deems appropriate on behalf of or against such member. It may, for good cause, declare an office vacant, upon two-thirds vote of the entire Board. (d) It may fill vacancies that occur during the year. The President shall appoint, and the Board confirm by a two-thirds vote of those in attendance, a member to fill any vacancy occurring. Said appointee shall serve for the balance of the term being vacated.

Section 3 Quorum. A majority of the members of the Board shall constitute a quorum.

Section 4 Resignation of Board members. All resignations from the Board, except for those covered under Article X, shall be made in writing to the President.

ARTICLE VI - APPOINTED OFFICERS

Section 1 Sergeant-at-Arms. The President, immediately upon taking office, shall appoint a Sergeant-at-Arms. It shall be the duty of the Sergeant-at-Arms to preserve order at all times and perform such other duties as ordinarily pertain to this office.

ARTICLE V - COMMITTEES

Section 1 The President shall appoint the following standing committees: (1) Membership, (2) Project, (3) Program and Entertainment, (4) Budget and Finance, (5) Publicity, (6) Convention, (7) Study Group Advisory, and (8) By-Laws.

Section 2 Special Committees. In addition to standing committees, there shall be appointed by the President, such special committees as the President and/or the Board of Directors may deem necessary.

ARTICLE VI - DUTIES OF COMMITTEES

Section 1 Membership. This committee shall promote activities designed to increase membership and shall perform such additional duties as specified by the Secretary in maintaining the records of membership.

Section 2 Projects. This committee shall devise and consider suitable and appropriate projects and shall devise ways and means whereby definite interpretation of the aims and objectives of the organization shall be given expression. It shall take cognizance of all matters of civic or similar nature and recommendations of the Project Committee shall constitute the basis for consideration of all projects of the organization.

Adoption of a project shall require a two-thirds vote of the entire Board of Directors.

Section 3 Program and Entertainment. This committee shall arrange and have charge of all programs for the regular meetings of the organization. They shall also have charge of all social functions of the organization, as may be directed by the Board of Directors.

Section 4 Budget and Finance Committee. This committee shall prepare a budget of the estimated income and expenses of the association for the year. In the month of May, each year, the Finance Committee shall cause a review of the books to be made by a licensed, Certified Public Accountant, and such statement shall be read to the organization at its annual meeting.

Section 5 Publicity. Publicity Committee shall be responsible for supplying notices concerning the organization meetings to the news media, and further, shall disseminate all interesting information furnished them by officers of the organization, chairmen of various committees. They shall also furnish the editor of the organization newsletter with news items for publication therein, promptly while it still has "news value".

Section 6 Convention. The Convention Committee shall have responsibility for all activities conducted during the annual Convention.

Section 7 Study Group Advisory. The Study Group Advisory Committee shall maintain official record of the activities of approved study groups. They shall furnish assistance and guidance to the study groups including, but not limited to, suggested topics for meetings, group projects, and research activities. They shall further, make newsworthy information and current listings of contact representatives available to the Publicity Committee.

Section 8 By-Laws. The By-Laws Committee shall review and make recommendations to the Board of Directors regarding needed or proposed amendments to the Constitution and or By-laws. This committee's activities will best reflect the changing needs of the organization.

ARTICLE VII - ELECTION OF DIRECTORS

Section 1 (a) The Directors of the organization shall be elected by mail, prior to the annual meeting each year. (b) At the regular meeting six months prior to the annual meeting, the President shall appoint a Nominating Committee of at least three members. The chairman shall be the immediate past president, then an active member of the organization. Should the immediate past president be unable to chair this committee, the Board of Directors shall appoint a chairperson selected from the committee. (c) At the regular meeting three months prior to the annual meeting, the Nominating Committee shall present a report, giving the number of Directors to be elected and presenting one or more nominations for each vacancy, at which time additional nominations will be entertained from the floor. (d) The consent of all nominees must be obtained prior to his/her nomination.

Section 2 (a) At least 30 days prior to the annual meeting, a ballot containing all nominees for Board vacancies, will be mailed to the entire voting membership. This ballot must be returned to the National Cambridge Collectors, Inc. no later than 7 days prior to the annual meeting. (b) The results of this ballot shall be announced at a

membership function prior to the annual meeting. (c) The nominees receiving the largest number of votes so cast shall be declared elected for the term of office beginning at the close of business of the annual meeting.

Section 3 Election of Officers. Officers shall be elected as provided in Article V of the Constitution. (a) This shall occur at a special meeting of the newly established Board of Directors, at a time which shall not exceed 30 days after the annual meeting. (b) All nominees for office must have previously agreed to accept their nominations. (c) Officers shall assume duty immediately upon their election.

Section 4 The Board of Directors shall consist of 12 members elected from the roll of active voting members. The term of office shall be for 4 years.

To provide for continuity of operations the original Board of Directors shall serve for the following terms:

- 3 persons for 1 year March 1973 to May 1974
- 3 persons for 2 years March 1973 to May 1975
- 3 persons for 3 years March 1973 to July 1976
- 3 persons for 3 years March 1973 to July 1977

ARTICLE VIII - MEMBERSHIP DUES

Section 1 Annual membership dues shall be as determined by the Board of Directors.

Section 2 Family Member. Each additional household member is eligible to become a voting member upon payment of prescribed dues per year.

Section 3 When payable. All dues shall be payable when billed by the Treasurer. No member shall be deemed in good standing who is in arrears more than 30 days in the payment of his dues.

ARTICLE IX - RESOLUTIONS AND SUBSCRIPTIONS

Section 1 No resolution or motion to commit this organization on any matter shall be considered by the organization until it has been considered by the Board of Directors. Such resolution or motions, if offered at an organization meeting, shall be referred, without discussion, to the Board, which after having given consideration to the matter shall submit its recommendations to the organization. Having received the recommendations of the Board, the organization may then proceed to take such action as may deem proper to the majority.

Section 2 No assessments shall be permitted to be placed upon the membership of the organization, neither shall any person nor organization be permitted to appeal for funds for any purpose whatsoever before a regular meeting of the organization.

ARTICLE X - TERMINATION OF MEMBERSHIP

Section 1 Resignation. Resignation of any member when delivered in writing to the President or Secretary shall become effective immediately upon its acceptance by the Board, providing all indebtedness of such member to the Club has been paid.

Section 2 Non-Payment of Dues. Any member owing dues or otherwise indebted to the organization for a period of 30 days from the date when same becomes due and payable may be suspended and deprived of all privileges of the organization. If he applies for reinstatement within sixty days from the date of such suspension and pays all amounts owing to said date, the Board of Directors may, in its discretion, reinstate the member to good standing, otherwise he shall stand dropped from the roll of members.

Section 3 Misconduct. Any member who by personal or business conduct violates the principles or ethics of the organization may be expelled from membership by the Board of Directors by a two-thirds vote of the entire Board, at a meeting called for that purpose, provided that said member shall have been given ten days notice in writing of such

pending action together with a copy of the complaint against him, and shall be given an opportunity for a full and fair hearing.

ARTICLE XI - AMENDMENT OF BY-LAWS

Section 1 These by-laws may be amended by a majority vote of the Active members in good standing present and voting at any regular meeting of the organization after recommendation by the Board of Directors, or by any twelve active members, provided written notice of such proposed amendments shall have been given to all active voting members at least ten days prior to the meeting.

No amendments or additions to these by-laws shall be made which are not in conformity with organization Constitution.

ARTICLE XII - APPROVED STUDY GROUPS

Section 1 Application for Approved Status. Any three or more members in good standing may make written application to this organization for recognition as an approved study group. Such application shall be reviewed by the Study Group Advisory Committee and a report shall be made to this organization recommending disposition of the application. The application shall include an initial membership list, designated contact representative of the study group, and such other information deemed necessary for the official record.

Section 2 Name. The name of an approved study group shall be "Cambridge Collectors Study Group No. ". Study Groups shall also be encouraged to adopt an additional common name of their choice.

Section 3 Membership. All members of an approved study group must be members in good standing of this organization and shall have a sincere interest in the study and collecting of Cambridge glass. Study groups shall be limited to a maximum of twenty members. No additional membership requirements shall be made.

Section 4 Meetings. Approved Study Groups are encouraged to hold a minimum of eight study group meetings each year for the purpose of studying Cambridge glass or closely related subjects.

Section 5 Reports. The study group shall submit a monthly report to the Study Group Advisory Committee for the purpose of maintaining the official record of the activities of the study groups. The report shall include any changes in the membership or designated contact representative of the study group, a summary of activities and subjects discussed and other matters specified by the Study Group Advisory Committee.

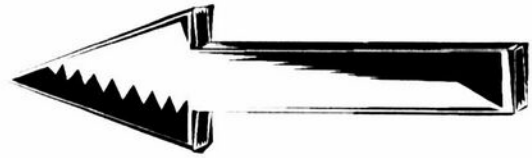
Section 6 Authority. A study group shall have no authority to commit this organization on any matter.

Section 7 Termination of Approved Status. Termination of the approved status of a study group shall become effective upon acceptance, by the organization, of a recommendation of discontinuance made by the Study Group Advisory Committee. Such a recommendation shall be, (1) if requested in writing by the members of the study group, (2) for non-compliance with the rules and regulations of this organization, (3) due to inactivity for a period exceeding six months, or (4) due to conduct which violates the principles or ethics of this organization, provided that the contact representative shall have been given ten days notice in writing of such pending action together with a full statement of the reason for the recommendation, and shall have been given an opportunity for a full and fair hearing.

Revised November 1995

WANTED - WANTED - WANTED - WANTED - WANTED -

- 1069 - Goblet - Apple Blossom
- 1400 - Martha Washington - Any Stem
- 1402/150 - Tally Ho - Any Stem - Elaine
- 1402/200 - Tally Ho - Any Stem - Chintz, Vichy
- 3011/1 - Banquet Goblet - Plain - Etched - Crystal - Color
- 3011/2 - Table Goblet - Plain - Etched - Crystal - Color
- 3011/3 - Saucer Champagne - Etched - Crystal - Color
- 3011/5 - Hock - Plain - Vichy - Crystal - Color
- 3011/6 - Roemer - Plain - Vichy - Crystal - Color
- 3011/7 - Claret - Plain Vichy, No. 758 - Color
- 3011/8 - Sauterne - Plain - Vichy - Color
- 3011/11 - Tulip Cocktail - Plain - Vichy - Crystal - Color
- 3011/12 - Wine - Plain - Vichy - Crystal - Color
- 3011/13 - Brandy - Plain - Vichy - No. 758 - Crystal - Color
- 3011/14 - Cordial - Plain - Vichy - Crystal - Color
- 3015 - Goblet - Loma
- 3050 - Goblet - Any
- 3070 - Goblet - Any
- 3081 - Goblet - Springtime, La Fleur
- 3102 - Goblet - Marlene
- 3105 - Any - Rosepoint
- 3110 - Goblet - Etch 285
- 3117 - Goblet - Loma
- 3118 - Goblet - Any
- 3143 - Gyro Optic - Goblet - Any - Crystal - Color
- 3151 - Goblet - Any
- 3650 - Goblet - Any - Blossom Time - Crystal - Color
- 3777 - Goblet - Any
- 7605 - Goblet - Any - Strawberry, No 407, N/E 311
- 7858 - Goblet - Any - Grape, Martha, N/E 319
- Arcadia - Goblet - Any
- Caprice 3550/400 - Goblet - Any - Crystal - Moonlight
- Connoisseur - Goblet - Any - Leaf, Mimosa, Woodland
- Everglade - Tumbler - Crystal - Color
- Touraine - Goblet - Any - Grape, Strawberry, N/E 288,
- Tuxedo - Goblet - Any - Crystal - Color
- 1068? - Any



**Ever wonder what the
NCC Museum
might need/want on its shelves ??**

People have asked what is needed. This is a start. Do you have any of these items that you would like to donate to the Museum or that you think the Museum might want to purchase?

Here is yet another way
to help NCC grow
and to share with others
at the same time!



WANTED - WANTED - WANTED - WANTED - WANTED -

(CONSTITUTION - continued from page 15)

The following amendment to the NCC Constitution was passed at the November 8, 1997, quarterly meeting:

ARTICLE III - Membership

Section 3 becomes Section 4

Add new second sentence:

The Board of Directors [see Section VI below] may designate the time frame for which an honorary member is elected.

Section 4 becomes Section 5

Add new Section 3

Lifetime membership

To recognize outstanding service to the organization, a person may be elected a lifetime member. They will have all the rights of voter members but will not be required to pay dues as long as they remain a member of the organization. The election of a lifetime member shall require the unanimous vote of the Board of Directors by secret ballot.

*Not every day is like another.
Something will be different for sure.
That is what I like about living
Every road we travel has a detour.
Some thing or someone will be knowing
That shimmer a mile ahead is heat,
Reflected from a dark surface nearby
And silver before a mile is complete.
Someone will ask about a name
One you have a recollection of,
And that will bring up a story
About another friend, another love.
Change is a constant feature
The ability to adapt is too.
We can accept the difference -
All we need is a new point of view.*

Paul E. White

CAMBRIDGE GLASS BOOKS FOR SALE

By National Cambridge Collectors, Inc.

Colors in Cambridge Glass

- 128 pages, 60 color plates, full index. Hardbound w/valueguide..... 19.95
- 1910 Nearcut**
108-page reprint of original 1910 catalog. PB w/valueguide..... 14.95
- 1930-1934 Cambridge Glass Co. Catalog Reprint**
250-page reprint of original catalog. PB w/value guide..... 14.95
- 1949-1953 Cambridge Glass Co. Catalog Reprint**
300-page B&W reprint of original catalog. B&W paperback
with value guide..... 14.95
- Cambridge Caprice**
200-page book illustrating one of the most popular lines of Cambridge Glass. Lists color, decorations, reproductions and rare pieces
Paperback with value guide..... 19.95
- 1940's Cambridge Glass Co. Catalog Reprint**
250-page reprint of original catalog and all well known supplemental pages. Drilled, ready for placement in your own three-ring binder. Due to its size, the reprint does not include a value guide. B&W. 34.95
- Cambridge Rose Point** by Mark Nye
94-page book listing of Rose Point from several sources: catalogs, trade journals, price lists, etching plates, and other surviving company records. One of the most popular lines of The Cambridge Glass Company, showing the many blanks on which Rose Point might be found along with the history and production life of the line. B&W paperback with value guide..... 14.95
- Etchings by Cambridge, Vol. 1** By the Miami Valley Study Group
84-page book showing samples of plate etchings applied by The Cambridge Glass Company. B&W paperback. Due to the style of publication this book does not have a value guide..... 14.95
- The Home of "Near-Cut" Factory Post Card**
B&W picture of The Cambridge Glass Company post card..... 50
- Crystal Lady Video**
Approximate 25 minute video copy of old Cambridge Glass Co. film showing the making of a goblet in the Cambridge factory..... 15.00
- Rose Point Value Guide** (Included with Rose Point Book purchase)
Updated value guide only, includes postage..... 5.00
- For N. C. C. Members, the above publications at a 10% discount**

Other books on Cambridge Glass

- Cambridge Glass 1927-1929** by Bill and Phyllis Smith
66-page reprint of original catalog. B&W paperback
with updated value guide..... 7.95
- Cambridge Stemware** by Mark A. Nye
167 page book showing as many known Cambridge stems known at the time of publication. B&W paperback. No value guide..... 19.95
- Cambridge Glass Company** by Mary, Lyle and Lynn Welker
120 pages of reprints from eight old catalogs. B&W paperback.
No value guide..... 10.00
- Cambridge, Ohio Glass in Color II** by Mary, Lyle and Lynn Welker
15 Color plates showing choice pieces from their collection.
Spiralbound. No value guide..... 5.95
- Cambridge Glass Company 1903** by Harold & Judy Bennett
106-page reprint of original catalog. B&W paperback N/value guide 7.50
- Reflections** by the Degenhart Paperweight & Glass Museum
45-page book giving a history of all 18 glass companies in Guernsey County. B&W paperback with pictures..... 5.00 including postage

address orders to:

Books, National Cambridge Collectors, Inc.
P. O. Box 416
Cambridge, OH 43725-0416

Please add postage and handling to your order (first book, \$3.00; each additional book \$1.00). Ohio residents add 6 1/2% state sales tax.
Only check or money order. NO CASH, NO CHARGE CARDS.
Dealer Discounts Available. Please Write!

OTHER ITEMS FOR SALE FROM THE NATIONAL CAMBRIDGE COLLECTORS GLASS MUSEUM

Brochures:

Cambridge Arms.....	1.00
Cambridge Square.....	.25
Chantilly.....	.25
Laurel Wreath.....	.10
Lynbrook.....	.10
Martha.....	.25
Regency.....	.25
Rock Crystal.....	.10
Rose Point.....	.50
Roxbury.....	.10
Star.....	.10

Please include SASE for above brochures

Cup Plates showing Cambridge Pencil dog in bottom. Made by Pairpoint in Crystal, Teal Green & Amethyst. Boxed..... ea..... 2.00
Please include \$3.00 shipping & handling on each order

The following Convention Favors are marked with the N.C.C. name & yr

Convention favors

1984 Pink, 2 1/2 oz. Georgian Tumbler.....	2.00
1985 Amber, 2 1/2 oz. Georgian Tumbler.....	2.00
1986 Yellow, 2 1/2 oz. Georgian Tumbler.....	2.00
1987 Lt. Blue, Marjorie Punch Cup.....	2.00
1988 Cobalt, Cambridge Square Cigarette Holder.....	2.00
1989 Teal Green, Mt. Vernon Cordial.....	2.00
1991 Cobalt Blue, Mt. Vernon Cordial.....	2.00
1994 Crystal Iridized, Cascade Goblet.....	5.00
1995 Cranberry Ice, Cascade Goblet.....	5.00
1996 Carnival, Cascade Goblet.....	5.00
1997 Green, Opal Edge, Cascade Goblet.....	5.00
Eagle book end, Fund raiser, Cobalt blue	30.00
Prism with "Cambridge" on one side. Fund raiser, Mint Julep	15.00

Please include \$3.00 shipping & handling on each order of 5 items

Books by Gene Florence

Hardbound color with value guides

Stemware Identification featuring cordials, 1920 - 1960's - 158 pgs.....	24.95
Very Rare Glassware of the Depression Years, Vol. 1 - 127 pgs.....	24.95
Very Rare Glassware of the Depression Years, Vol. 2 - 140 pgs.....	24.95
Very Rare Glassware of the Depression Years, Vol. 3 - 143 pgs.....	24.95
Very Rare Glassware of the Depression Years, Vol. 4 - 143 pgs.....	24.95

Shipping is \$3.00 for first book and \$1.00 for each additional book

Salt & Pepper tops. Polycarbon plastic, will fit most regular sized Cambridge shakers such as Rose Point ftd and flat bottomed shakers. Also fit Heisey Rose, Saturn, Plantation, Crystalite and some Orchid. Fit some Anchor Hocking and Candlewick. made from the same material used to make taillight lenses for autos.

Price: 1 to 9 pairs @ \$6 per pair - 10 or more pairs @ \$5 per pair
Shipping & Handling is \$3.00 per order on S&P tops

Send all orders to:

National Cambridge Collectors, Inc.
P. O. Box 416
Cambridge, Ohio 43725-0416

~ GLASS ~ MARKETPLACE

Classifieds

WANTED: Rare or unusual pieces of Cambridge Glass especially Opaques or Carnival. Also Cambridge Art Pottery. Top prices for outstanding pieces. **Call collect 609-965-2413.**



Bogart's Bed & Breakfast

62 W. Main Street, New Concord
New Concord lodging in 1830 Federal
Style home, decorated with
antiques throughout.



Bogart's Antiques

7527 E. Pike, Norwich OH
Quality Antiques Bought & Sold

OWNERS: Jack & Sharon Bogart
872-3514 or 826-7439



Salt & Pepper Tops For Sale

Plastic tops to fit most Cambridge, such as Rosepoint ftd. and flat-bottom shakers. Also fit Heisey Rose, Saturn, Plantation, Crystalite and some Orchid.

Fit some Anchor Hocking and Candlewick.
(CAUTION - do not force on as they will crack)

Made of polycarbon, the same material used to make taillight lenses for autos.

Price: 1 to 9 pairs @ \$6 per pair

10 or more @ \$5 per pair

ON SALE NOW AT THE NCC MUSEUM

Please add \$3.00 for shipping & handling.

The DAZE Inc.

SPECIAL OFFER
to NCC friends
\$2.00 OFF
the 1 year subscription price
when on this form or copy of it!

The Original National monthly newspaper dedicated to the buying, selling and collecting of American made glassware china, and pottery from this century. We educate and inform you each month with feature articles by top notch writers, readers letters, club happenings, reproduction news, show reports and there are hundreds of dealers to help you fill in the missing pieces of your collection. "Keep up with what's happening" . . . Subscribe today!

Name _____

Street _____

City _____

State _____ Zip _____

1 year \$21.00 2 years \$40.00 \$2.00 Single Copy

Subscription Hot Line: 1-800-336-9927

Exp. Date _____ Card No. _____

Signature _____

Orders to:

The Daze, Inc., Box 57, Otisville, MI 48463

Please allow 30 days for your first issue - Canadian Subscribers, add \$1.00 per year and subscribe by charge card only! This Special Offer may not be combined with any other special offer.

Offer Expires December 31, 1998



Stems Without Thorns

As the world's largest supplier of discontinued and active china, crystal, flatware and collectibles, Replacements, Ltd. has over 325 different patterns of Cambridge crystal.

And however much we enjoy selling pieces which were once thought irreplaceable, we love buying them as well. Thanks to people like you, our crystal inventory currently numbers in the hundreds of thousands, and the numbers keep growing every year.

So, if you've been unsuccessfully searching for that elusive piece of Cambridge - or any other type of fine crystal - call us for a free list of pieces available in your pattern. And, if you're looking to sell pieces you currently have, we can help you there, too.

REPLACEMENTS, LTD.

China, Crystal & Flatware • Discontinued & Active

1-800-REPLACE
(1-800-737-5223)

1089 Knox Road,
PO Box 26029, Dept. CB,
Greensboro, NC 27420

DEALERS



DIRECTORY

NOTE: When writing to the dealers listed here, please enclose a SASE!

<p>DAUGHERTY'S ANTIQUES Jerry and Shirley</p> <p>Antiques and Collectibles * Mostly Glass</p> <p>Shows & Mail Orders 2515 Cheshire No 402-423-7426 Evenings Lincoln NE 68512</p>	<p>"HAPPINESS IS" Buddy and Kathy Stultz</p> <p>3106 Warren Court, Glen Allen, VA 23060 804-672-8102</p> <p>Specializing in American Made Glass We Buy & Sell, Shows & Mail Order</p>	<p>THE JONES GROUP Cindy Jones</p> <p>Buy and Sell Cambridge Glass 650 Riverside Drive Sleepy Hollow, NY 10591 914-631-1656 or E-Mail Caprice0@aol.com</p>
<p>Milbra's Crystal Buy & Sell Replacement and Matching Specializing in Cambridge Milbra Long (817) 645-6066 Fostoria Emily Seate (817) 294-9837 Heisey PO Box 784, Cleburne, TX 76033 and others E-mail longseat@flash.net</p>	<p>YOU CAN ADVERTISE YOUR ANTIQUe SHOP HERE!</p>	<p>YOU CAN ADVERTISE YOUR ANTIQUe SHOP HERE!</p>
<p>THE GLASS URN 456 West Main Street, Suite G Mesa, AZ 85201 602-833-2702</p> <p>Mail Order Shows Open Shop</p> <p>CAMBRIDGE, FOSTORIA, HEISEY, ETC.</p>	<p>ANTIQUES ON THE MALL SPECIALIZING IN CAMBRIDGE GLASS</p> <p>Bogart's - Bldg. #3 - Norwich, OH</p> <p>Virginia Bennett 740-432-4483 64183 Warne Drive, Cambridge, OH 43725</p>	<p>GATEWAY ANTIQUE MALL, INC. JUST NW OF MINNEAPOLIS-ST. PAUL, MN Next to Super 8 in Rogers, MN (I-94/101 Intersection)</p> <p>85 Dealers 7 Days, 10-6 612-428-8286 ELAINE STORCK, OWNER/DIRECTOR</p>
<p>THE DEGENHART PAPERWEIGHT AND GLASS MUSEUM, INC.</p> <p>P. O. Box 186 Cambridge, Ohio 43725-0186 Intersection of US 22 & I 77 Phone 614-432-2626</p>	<p>D & D ANTIQUES</p> <p>Columbus, Ohio</p> <p>Dick Slifko SHOWS ONLY</p>	<p>JAMESTOWN ANTIQUES 16 E. Washington St., Jamestown, OH 45335</p> <p>Rosepoint and Cambridge our Specialty Shows and Shop (chance or appt.)</p> <p>Buy (937) 675-6491 Sell Susan and Larry Everett</p>
<p>THE GLASS CUPBOARD</p> <p>P. O. Box 652 West End, North Carolina 27376</p> <p>Marcia Ellis Cambridge, Heisey 910-673-2884 Shows, Mail Order</p>	<p>JUDY'S ANTIQUES Judy Bennett 422 S. Ninth Street (Corner of Jefferson) Cambridge, Ohio 43725 Bus 740-432-5855 Res 740-432-3045 CAMBRIDGE GLASS MY SPECIALTY</p>	<p>We Buy Cambridge Kelvin and Heather Moore 810 Red Mill Drive Tecumseh, MI 49286 Phone 517-423-0993</p>
<p>FINDER'S ANTIQUE HOUSE 3769 Highway 29 North Danville, VA 24540 (804) 836-6782 Cambridge-Heisey-Duncan-Fostoria</p>	<p>GREEN ACRES FARM 2678 Hazelton Etna Rd., Pataskala, OH 43062 (State Route 310 North)</p> <p>Sat & Sun 1-7 PM 614-927-1882 Antiques, Crystal Glass and Collectibles</p>	<p>CRYSTAL LADY 1817 Vinton St., Omaha, NE 68108</p> <p>Bill, Joann, and Marcie Hagerty Bus 402-341-0643 Res 402-391-6730 Specializing in Elegant Glass & Collectibles</p>
<p>YOU CAN ADVERTISE YOUR ANTIQUe SHOP HERE!</p>	<p>YOU CAN ADVERTISE YOUR ANTIQUe SHOP HERE!</p>	<p>PENNY COURT MALL 637 Wheeling Avenue Cambridge, Ohio 100 Booths 15,000 sq. ft. HOURS: Daily 10-6 Sunday Noon-5 Closed: Easter, Thanksgiving, Christmas Call for Other Holiday Hours 740-432-4369</p>
<p>MICHAEL KRUMME Cambridge and other elegant glassware</p> <p>(213) 874-GLASS e-mail mkrumme@pacbell.net website http://www.glassshow.com PO Box 48225 Los Angeles CA 90048-0225 Send your want list</p>	<p>Warren and Mary Welsh Cambridge & Other Elegant Glassware 3635 Saddle Rock Rd., Colorado Springs, CO 80918 (719) 531-5866 WELS@EARTHLINK.NET MAIL ORDER SHOWS</p>	<p>MARGARET LANE ANTIQUES 2 E. Main St., New Concord, OH 43762 Lynn Welker 740-826-7414</p> <p>Cambridge Glass Matching Service Hours Mon-Fri 10-12 AM, 1-5 PM or by Appointment</p>
<p>ISAACS ANTIQUES (740) 826-4015</p> <p>See our booths in Penny Court Mall in Cambridge and East Pike Antque Mall at Rt. 40, one mile west of I-70 Norwich Exit #164</p>	<p>ALADDIN LAMP BOOKS Free List Figurine Lamps Wanted Bill & Treva Courter 3935 Kelley Rd. Kevil, KY 42053 Phone/FAX 502-488-2116</p>	<p>DEXTER CITY ANTIQUE MALL P. O. Box 70, Dexter City, Ohio 45727 (740) 783-5921</p> <p>Located on Ohio St. Rt. 821 Between Exits 16 & 25 off I-77 Just 30 min. South of Cambridge, Ohio</p>

**JOIN US - PICNIC WITH
CAMBRIDGE
QUARTERLY MEETING
AUGUST 22, 1998
12 NOON
NCC MUSEUM, CAMBRIDGE, OHIO**

**Come to our annual potluck picnic.
Bring a dish of food and/or beverages.**

10 a.m. - work session and review
12 noon - picnic and show & tell

See You There!

**National Cambridge Collectors Inc
PO Box 416
Cambridge OH 43725-0416**

**<http://www.cambridgeglass.org>
e-mail: NCC_Crystal_Ball@compuserve.com**

FIRST CLASS MAIL
U.S. POSTAGE
PAID
PERMIT NO. 1
CAMBRIDGE, OH

FIRST CLASS MAIL

Membership Renewal Notice

**If the date on your address label is 7-98,
this is your LAST ISSUE of the Crystal Ball.
Please take a moment and renew now. Thank you!**



National Cambridge Collectors, Inc.

P. O. Box 416

Cambridge, Ohio

43725

A nonprofit organization dedicated to the preservation and study of Cambridge Glass

July 12, 1998

Dear N.C.C. Member:

I apologize for the somewhat impersonal nature of this message but we wanted to very quickly get important news to you. On Sunday night, June 28th our Museum of Cambridge Glass flooded extensively after a Convention weekend of continuous, heavy thunderstorms.

A team of eighteen courageous "heroes of Cambridge" went to the Museum and had just three hours to safely move glass from the bottom two shelves and shift as many irreplaceable pieces as possible to the top two shelves. Without their valiant work, damage to glassware would have been much more significant.

In total, approximately five and a half feet of water filled the museum. Members were able to reenter the building for the first time on Thursday July 2nd at 10:30 a.m. Miraculously, damage to glassware was relatively modest. However, paper items, resale inventory, the office, and the building were heavily damaged.

The Museum is officially closed for the season and replacement plans are already under discussion. We welcome members thoughts and will try to maintain a high level of communication with the membership. If you have internet access, you can go to the club's site for more details and a picture of the flooding (www.cambridgeglass.org). Our August Crystal Ball will have much more detail on this very unfortunate event.

For those of you getting your July Crystal Ball with this letter, we apologize for the delay but our label printer was one of the flood casualties. We expect some member services could be delayed as a result of the flood and ask your patience and cooperation.

Also, very sadly, I need to bring you the news of the passing of Mary Martha Mitchell, the last President of Cambridge Glass and an inspiration and matriarch to our club. Ms. Mitchell passed away on Saturday July 4th and the funeral was last Wednesday the 8th. The family asked that those persons interested in making a donation do so to N.C.C.

This has been a very difficult two weeks in our club's history. It had begun so gloriously with our Silver Anniversary Convention and then took a vicious turn as Mother Nature unleashed devastating forces. Ironically, as we gathered to celebrate our past, we were very quickly forced to appraise our future. We ask your support, cooperation, and understanding as we look to rebuild our Museum, keep our club strong, and appreciate the heritage of those like Mary Martha who gave us such beautiful glass to enjoy, appreciate, and preserve.