



Cambridge Crystal Ball

Published monthly by National Cambridge Collectors, Inc.
to encourage and report the discovery of the elegant and boundless product of the
Cambridge Glass Company of Cambridge, Ohio

Issue No. 309

January 1999

RESCUE A Previously Untold Story

by Bud Walker



This story has its beginning when I arrived in July at what was our NCC Museum. In the middle of the front room, our book display case came to rest on the floor where the flood waters left it. It was sopping wet with one leg broken off. Upon closer examination, I could see that the back was beyond repair. My first thought was to get it off the floor so that it could start drying out. With only three legs, it was not going to stand on its own. I decided to stand it on end with several two-by-fours under it so that the air could dry it out. This worked well with one exception. The remaining leg was at the right level to smack me in the head. More than once I thought about removing the remaining leg.

As the cleanup progressed, there stood the display case in the middle of the floor. One of the suggestions was that we should scrap it as there were three or four more display cases in the paper room. Knowing that it was from the factory show room, I offered to take it home with me and try to repair it. Upon completion of the cleanup, the case with the broken leg was loaded on my truck for the trip to New Jersey.

After getting the piece home, I remembered seeing a picture in the Smith book *Cambridge Glass 1927 - 1929* that showed the cases in the factory show room. In that picture, they have a natural finish. I decided to try and make the case look as it had when in the factory. After

(Continued on page 6)

Inside This Issue:

The Former and Future Museum
Convention 1999 - It's A Small, Small World
1999 Auction List
November Quarterly Meeting Minutes
Arthur J. Bennett Christmas/New Year Letter

Cambridge Crystal Ball

Official publication of National Cambridge Collectors Inc., a non-profit corporation with tax exempt status. Published once a month for the benefit of its members. All rights reserved; reproduction in whole or in part without written permission of NCC and the author is prohibited.

Membership is available for individual members at \$17.00 per year and an additional \$3.00 for associate members (12 years of age and older, residing in the same household). Of the master member dues, \$12.00 is credited to a one-year subscription to the *Crystal Ball*. All members have voting rights, but only one *Crystal Ball* per household. **Multi-year memberships are available: 2 years for \$33.00, 3 years for \$49.00.**

1998-1999

OFFICERS AND COMMITTEE CHAIRPERSONS

President	Richard D. Jones
Vice President	Tarzan Deel
Secretary	Lynne Franks
Treasurer	Charles Upton
Sergeant-at-Arms	Michael Neilson
Acquisitions	Kelvin Moore
Budget & Finance	Dennis Snyder
By-Laws	Bud Walker
Corresponding Secretary	Charles Upton
Technology	Tarzan Deel
Membership	Jeff Ross
Museum Relocation	Richard D. Jones
Museum Facilities	Carl Beynon, Joe Miller
Museum Interior	J.D. Hanes, Marybelle Teters
Non-Glass Items	Tarzan Deel
Nominating	Joy McFadden
Program	Bill Hagerty
Projects	Bill Hagerty
Publications	Mark A. Nye
Publicity	Cynthia A. Arent
Study Group Advisor	Marybelle Teters
1999 Convention	Mark A. Nye, Bud Walker
1999 Auction	Squeek and Dorothy Rieker, Tom and Noreen Kullman, Lynn Welker
1999 Glass Show	Mary Beth Hackett, Joy McFadden
1999 Glass Dash	Bud Walker
<i>Crystal Ball</i> Editor	Lorraine Weinman
<i>Crystal Ball</i> Circulation Directors	Lisa and Mike Neilson
WebMaster	Don Stevens

Internet website: www.cambridgeglass.org

DUE TO THE RECENT FLOODING IN CAMBRIDGE, OHIO, THE NATIONAL CAMBRIDGE COLLECTORS' MUSEUM OF CAMBRIDGE GLASS AT 9931 EAST PIKE ROAD WILL NOT BE OPEN UNTIL FURTHER NOTICE.

THE TEMPORARY NCC MUSEUM IS LOCATED IN PENNY COURT MALL IN DOWNTOWN CAMBRIDGE.

ADVERTISING RATES

Display Rates (camera ready ads preferred)

Unit	Members	Non-Members
Full Page	\$45.00	\$60.00
3/4 Page	\$35.00	\$50.00
1/2 Page	\$25.00	\$35.00
1/4 Page	\$15.00	\$25.00
1/8 Page	\$10.00	\$15.00

(\$5.00 additional if a photograph is included in display ad)

Classified Rates

10 cents a word \$2.00 minimum

Abbreviations and initials count as words. Type sizes cannot be mixed in classified ads. **Payment in full must accompany all ad copy.** Contact Editor for copy assistance.

Dealer Directory

Six Line Maximum \$24.00 for 12 month contract

Also included - Listing on our Internet site at:

www.cambridgeglass.org

Cambridge *Crystal Ball* assumes no responsibility for items advertised and will not be responsible for errors in price, description, or other information.

Advertising copy, letters, articles, must be received by the 5th of preceding month to be considered for publication in the next issue.

Please address all correspondence (include SASE) to:
(or E-Mail NCC_Crystal_Ball@compuserve.com)

National Cambridge Collectors, Inc.

P.O. Box 416

Cambridge, OH 43725-0416

President Rick Jones 914-631-1656

or E-Mail Caprice0@aol.com

Vice President Tarzan Deel 540-869-3949

Secretary Lynne Franks 216-661-7382

NCC Museum: Phone 740-432-4245

Fax 740-439-9223

Please notify us immediately of any address change.

Opinions or information stated in any signed article or letter printed in the *Crystal Ball* are those of the author and may not agree with National Cambridge Collectors, Inc. The Editor reserves the right to refuse and to edit any material submitted for publication to conform to the editorial style of the *Crystal Ball*. Members are encouraged to write to NCC and the *Crystal Ball* sharing their knowledge and questions!

President's Message

The Former and Future Museum

Normally as the new year starts, I try to write a column that may review where we've come in the past year and what we may seek to accomplish in the coming year. This year for our club has been a tumultuous and tragic one. Floods in June devastated southeastern Ohio and claimed our museum. There is no greater issue than that as we move forward.

We are grateful to the scores of people who have rallied around this cause in so many ways; from those who guarded our museum during the flood to those who heroically tried to protect our museum just before the floods to those who helped with clean up and those who contributed to our flood relief funds.

This month I was going to focus on the many DG clubs around the country who have made the NCC Museum their cause. We thank you profusely and in another issue we will elaborate on how much your support means to us. However, this month I want to keep my comments brief so that we may hear important thoughts from a past president, Willard Kolb.

Willard very eloquently discusses the efforts of many people who made our first museum possible. We owe him and them a tremendous debt of gratitude. Neither I nor the person referenced in the December column meant any disrespect to these important people and all of their selfless efforts.

To clear up one piece of confusion regarding the Scottie Dog promotion, the sale of 400 pairs of bookends at an \$80 profit each will result in a \$32,000 profit less the mold improvement costs.

Please take a minute to read Willard's comments and appreciate an important part of the club's heritage. Until next month ...

Pick

I must say I read with interest the President's Message in the December 1998 issue of the *Crystal Ball*, especially in regard to the "quote-unquote" message from a "long-time member." It has always been my opinion that the *Crystal Ball* should not be a forum for members to use as a method of degrading other members. Constructive criticism should always be welcome. If someone has a legitimate complaint, it should be directed to the Board of Directors, who is the governing body of the organization. They alone should determine if the complaint is legitimate and worthy of being published. Since the door has been opened for this type of public scrutiny, I think that I, having been president during the time the "small museum in a pasture" was built, should have the opportunity to answer the allegations that we didn't have the vision to think big and we built the museum in a pasture. Now if you think that is not what is being said in that paragraph, you haven't read the line that followed that statement. It reads: "Think long term and with the idea we aren't going to do this again." Which translates into "They built a tiny museum in a pasture." The statement that really bothers me is this one. "What's money but dirty paper and we can always get more of it." It's no wonder the person who wrote this email was afraid to have their name associated with it. In the trade, we call this a "ten cent pocket book with a million dollar idea." What I will write may not make very many people happy, but I am not afraid to sign my name to this letter.

Since many of the members who gave so generously of their time and money to bring the NCC a museum have passed away and some have left the club, and also there are those who are still members, I feel they would want me to be their spokesperson and defend their long hard efforts. I do this because, as I mentioned before, I was president during that period and feel responsible for what happened during that period of time.

And so I begin to tell you why the newer members should know our side of the story. Since space is limited, I will not get into specific detail in most instances.

The National Cambridge Collectors was formed in 1973 and by 1980 we had acquired the piece of property where the Museum stood. We bought the land on a land contract and raised money to pay it off. Also, in 1980 we

(Continued on page 4)

(PRESIDENT'S MESSAGE - Continued from page 3)

began renovating the building with "ALL !!!!!" volunteer persons. These people worked nights and weekends, some traveling long distances to help. No work was contracted out. Even the showcases in the Museum were built by the volunteer workers. The renovation took nearly two years. We had little money but we had 1,011 appreciative members when we dedicated the Museum at the convention in 1982. So in a little less than nine years, NCC went from a new club to a club with a museum and a membership of 1,011, only 344 less than we have in 1998, 16 years later.

In 1984 we saw a need to expand the Museum and added on about a 20' X 30' extension. The block and roof were contracted out, but the hardworking volunteer members did all of the interior work, including again all of the showcases. We had no sooner completed that, when we were faced with the Imperial liquidation and an attempt to recover as many of the Cambridge moulds as we could afford. In a general meeting prior to that time, those members with such "short vision," along with some of the national clubs that we contacted later, had pledged nearly \$30,000 toward purchase of the moulds. All of these pledges except one were honored when we bought as many of the moulds as we could afford. At about the same time, in March of 1985, we paid off a \$44,000 mortgage on the building and land.

Many of these same people spent countless hours at Imperial in the dead of winter in an unheated factory (where in order to get warm, we went outside) to help acquire as many moulds and other equipment as we could with our finances. We also had to lower ourselves to begging for certain memorabilia because we did not have the assets to buy them.

These "shortsighted" members, after having done that, raised enough money to build the new 40' X 80' building which now houses the moulds and other equipment. This building was completed June 19, 1985, and all of the moulds and equipment that was stored in volunteers' basements and garages was assembled in the building after the Ford Motor Company donated all of the metal racks as their part in helping the NCC.

Sometime in the late 1980s, I'm not sure of the date, the Museum building had new siding installed, and since that time there were no improvements made to the property simply because there was not enough money to build a new museum or relocate. Now all of a sudden we are to believe that the membership is going to finance what will amount to a \$450,000 investment and it will pay for itself because we will be in a location where more people will visit it and we can become a part of the losing proposition of having bus tours. What's more, if it doesn't increase revenues and pay for itself, we will just take some "dirty paper" and pay it off. If you will take the time to read the reports in your *Crystal Ball* from 1990 until the present, you will find that the

membership in that period of time only increased by 11; yes, 11 members. I find this very alarming. Of course we will take the blame for that also, because we built a museum in a pasture where no one could find it to sign up as members. But worse than that, we did not have the vision to invest in or locate near an antique mall so the members could find our Museum. I will agree that was terrible of us not to take that into consideration.

I would like to add that during the time I was president, we had people, and it was their right, make similar statements about things the club did that they didn't agree with, and almost to the letter you could profile these people.

PROFILE:

Long-time member would translate into a member for a few years.

They never attended a quarterly meeting.

They never did any volunteer work.

They never donated any money for any reason.

They never participated in any money-raising projects.

They never attended any convention functions.

They never visited the Museum.

They did, however, buy the books we published so they could find out how much their collection was worth, after all, the club owed them that for the dues they were paying.

And last but not least: They could always tell you how the club should be run, but as soon as you suggested they be nominated for the board, they would clam up and hustle off.

If I could take just a moment more to question a couple of what I deem honest mistakes in Rick's article. How does a turn of approximately 450 Scotty Dogs sold at \$100 a pair net the club a \$32,000 profit? Did Mosser donate the whole turn to the club? If he did, that would still be only \$22,500 profit. My understanding, while I was at Harrisburg last month helping promote the Scotties, was that the production cost was \$10 per Scottie, which would translate into a profit of \$18,000 if they were all sold.

Also in the last paragraph of the article it mentions that we need a first-rate museum to protect the value of our investment in our collections. I hope the wrong person doesn't read that. The National Cambridge Collectors is a nonprofit organization with 501 (C3) status. It can only exist for the purpose of preservation and education. It cannot exist for the enhancement of values of anyone's private collection. It is fine to think that way, but it should not be put in writing.

I would like to thank the membership for hearing me out and I don't expect the members to agree with me. I am sure that the hardworking, dedicated members who have passed on and are looking down from above are happy that their actions have been explained and

(Continued on page 5)

(PRESIDENT'S MESSAGE - Continued from page 4)
defended. After all - Actions speak louder than words.

Willard P. Kolb



Past President

1999 Calendar Planning

Mark your calendars now with these important events during the coming year:

March 5

March Quarterly Meeting
Pritchard Laughlin Civic Center
Cambridge, Ohio

March 6

All Cambridge Glass Auction
Pritchard Laughlin Civic Center

WE CLEAN CLOUDY GLASS! SATISFACTION GUARANTEED

Yes, it is true that we really can restore the interior of your crust, vase, decanter and other internally etched items back to near original condition!

We do *not* oil, wax or cover up the sickness in any way! We actually remove it.

No items are too sick to clean! If we cannot clean an item to meet your satisfaction, the cleaning is FREE!

Send no money up front. When we return your item a bill will be enclosed for the postage and cleaning. If you are not satisfied, only the return postage is requested.

Most items clean in 6-8 weeks. All glass is handled and cleaned at your risk. Some very cloudy items may take several additional weeks.

Crust	\$20.00	Cocktail Shaker	\$30.00
Vinegar & Oil	\$25.00	Salt Shaker (one)	\$25.00
Cologne	\$20.00	Salt Shaker (pair)	\$35.00
Decanter	\$30.00	Water Bottle	\$30.00
Vases (under 12")	\$25.00	Lavender Jar	\$20-30.00

Ship to: Kim Carlisle & Associates
28220 Lamong Road, Dept. C
Sheridan, IN 46069
(317) 758-5767

NATIONAL CAMBRIDGE COLLECTORS MEMBERS



Each week thousands of collectors and dealers turn to the *Antique Trader* as their source for glass. If you have glass to sell, or are looking to buy glass, the *Antique Trader* is the place to advertise! Now through December 31, 1999 identify yourself as a member of the National Cambridge Collectors and receive 10% off any new display ad in the *Antique Trader*.

TAKE ADVANTAGE OF:

- ◆ 50,000 paid subscribers
- ◆ A large weekly readership of over 150,000 active buyers and sellers
- ◆ National distribution
- ◆ Extra distribution at glass shows and conventions
- ◆ Lowest cost per contact in the industry

1-800-482-0147

ANTIQUETRADER

P.O. Box 1050 ◆ Dubuque, IA 52004

Receive
a free issue of
Antique Trader!
CALL: 1-800
334-7165

Source: ONC907

America's Largest Antiques & Collectibles Marketplace

Convention 1999

It's A Small, Small World

by Mark Nye, Convention Chairman

Convention 1999 is only six months away and with any luck at all, Mother Nature will not repeat her appearance of 1998. The subtitle of this article gives the theme of this year's convention. Displays, one program, and the convention souvenir booklet will feature the small pieces of glass Cambridge produced. These are the items that if collected will not require the addition of a new wing to the house. Items such as salt & pepper shakers, perfumes, cordials, etc., are examples of what I consider Cambridge's "It's a Small, Small World." The convention will officially start with the Thursday night picnic and end Sunday with breakfast, the annual meeting, and the former workers reunion. In between will be a continental breakfast on Friday morning, the annual banquet on Saturday night, the All Glass Show, and the Glass Dash. The site for the Friday morning continental breakfast will be announced at a later date. Unless there is a change in plans, the Thursday night picnic will once again be at

the Best Western pool.

Prior to the start of the NCC Convention, Phyllis Smith will have another auction featuring glass from the collection of her and her late husband Bill. There will not be an auction preview on Wednesday night this year. However, there will probably be some sort of "happening" on Wednesday night for those who have come to Cambridge early in order to attend the auction. Watch this space for developments.

Additional details regarding Convention 1999 will appear in future issues as well as be announced at the upcoming March quarterly meeting.

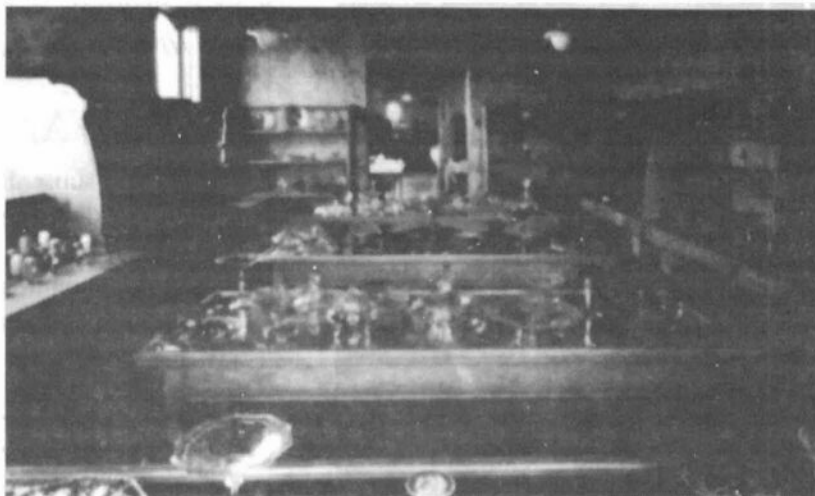
Plan now to be in Cambridge in June 1999 for a dry, sunny convention. Tetanus shots will not be required for participation in the 1999 NCC, Inc. Convention.

(RESCUE - Continued from page 1)

two gallons of paint remover and untold hours of scraping old paint off, the beautiful oak again saw the light of day. I couldn't believe the lovely mouldings that had been hidden by the many layers of paint. The ruined back was replaced with oak plywood that matched the rest of the case and the broken leg was reattached. After several coats of finish, the piece was done.

Needing a climate controlled place to store the case, it was moved into our kitchen. We decided to put some of our Cambridge pieces on the shelves, as we had never tried displaying glass on wooden shelves. We then invited several Cambridge Collectors to see the finished piece before it was loaded for its return to Cambridge in November.

I realized that the case was a nice piece, but I had no idea it would turn out as nice as it did. Maybe I can sweet talk the board into allowing me to bring another of the cases home for restoration. I can visualize a room in our new museum where you can look in a doorway and see all of the cases restored and filled with glass just as they were in the factory show room. Only time will tell if this dream can be turned into reality...



View of the Display Room at the Factory of The Cambridge Glass Co.
(from a 1930 catalog as shown in *Cambridge Glass 1927 - 1929*)

1999 NATIONAL CAMBRIDGE COLLECTORS, INC. BENEFIT AUCTION INFORMATION

AUCTIONEER: Craig Connelly

ADMISSION: \$2.00

LOCATION: Pritchard Laughlin Civic Center
Glenn Highway (U.S. 40 West at 1-70)
Cambridge, Ohio

DATE: March 6, 1999

PREVIEW: 9:00 a.m.

AUCTION: 10:00 a.m.

All glass guaranteed to be Cambridge. The auction committee has checked all glass to be auctioned. All pieces should be examined immediately and returned before five items are sold if the article is not as represented. Any damage is indicated in this catalog. If no color is indicated, the item is Crystal.

TERMS: Cash or check with proper identification, day of sale. All sales are subject to 6 1/2% Ohio sales tax. Dealers may sign an exemption form if the items purchased are for resale. In which case, no tax will be charged.

CATALOG INSTRUCTIONS: The number in parenthesis () at the end of each listing indicates the amount of items to be sold. Bidding will be by the piece if a number occurs at the end or as a lot if pair, set or lot is indicated. You may buy any number of an item if a number appears at the end of an item description. Colors refers to *Colors in Cambridge* by NCC for reference.

MAIL BIDS: All bids must be accompanied by a check for **each** lot. Bids will be executed secretly, and the bidder will pay only the final auction price. Please include a stamped, self-addressed envelope with bids. You will be notified if you are not the successful bidder, and your check(s) will be returned and the final selling price will be noted. Ohio residents, please include 6 1/2% Ohio sales tax or your vendor's number. If you wish to have the pieces shipped to you, please include a **separate** check for adequate postage. You may send one (1) blank check (for shipping only) if you are bidding on many lots. All pieces will be shipped via UPS the week immediately following the auction. Please include your UPS delivery address (not a P.O. box). All items will be carefully checked again before they are shipped. Refund checks for bid overages will be returned immediately. If you wish any additional information, phone 740-453-6403 or 614-777-8064.

Bids must be received by March 5, 1999, to be eligible. Mail bids to: Lynn Welker, 2 East Main, New Concord, Ohio 43762. **Make checks Payable to: National Cambridge Collectors, Inc.**

MOTEL RESERVATIONS: Phone the Cambridge/Guernsey County Visitors & Convention Bureau at 1-800-933-5480 for a listing of motels. Food will be available on the premises the day of the auction.

QUARTERLY MEETING: Friday, March 5, 1999, at 7:30 p.m. An informative meeting and preview of the auction glass will be presented. Bring a friend and your Show & Tell glass to the meeting.

Additional auction catalogs are \$1.00 postpaid or included with your admission.

- 1 _____ #870 Lt. Blue Decagon Center-Handled Sandwich Tray (minor chips, some scratches)
- 2 _____ #3400/67 Crystal 12 in. 5-Part Celery & Relish
- 3 _____ "Krystolshell" Crystal Sugar & Creamer w/ Shell Foot (Cambridge labels)
- 4 _____ #3500/41 Amber 10 in. Urn or Candy Jar
- 5 _____ #1236 Crown Tuscan 8 in. Keyhole Ivy Ball
- 6 _____ #3111 Carmen 3 oz. Cocktails (2)
- 7 _____ #574 Crystal Cascade 9 1/2 in. Oval Vase
- 8 _____ #29 Crystal Cambridge Arms Unit; #628 Candlebase, #1563 Candlearm, (3) #1536 Peg Nappies,
#1537 Peg Nappy w/ Candlewell, and #1633 5 in. Peg Vase (set)
- 9 _____ #758 Lt. Emerald Green Decagon 5 1/2 in. 2-Handled BonBon (signed), (minor nicks to base)
- 10 _____ #1041 Crystal 4 1/2 in. Swans, (2)-Style I; (1)-Style III (3 total)
- 11 _____ #1138 Seagull 8 1/2 in. Figure Flower Frog
- 12 _____ Modern Gold Krystol Candy w/ Lid (factory flaw on lid finial)
- 13 _____ #1371 Amethyst Bridge Hound (Cambridge label)
- 14 _____ #3143/39 Mlt. Blue Gyro Optic 86 oz. Pitcher & (6) #3143/50 13 oz. Tumblers (set), (pitcher scratched)
- 15 _____ #3400 Royal Blue 80 oz. Jug & Lid (lid is royal blue w/ an acorn on top)
- 16 _____ #1066 Amethyst 3 oz. Wines (2)
- 17 _____ Peach-Blo Narrow Optic Tall Blown Perfume, Broken Dauber (cloudy)
- 18 _____ #3900/68 Crystal 5 in. Candlesticks (pair)
- 19 _____ #680 Bluebell Dresser Compact (1 chip on base)
- 20 _____ Ivory Wetherford 4 in. Bowl in Original Silverplate Sundae Holder
- 21 _____ #3400/141 Crystal Doulton Pitcher w/ High Handle (scratches, slight staining)
- 22 _____ Topaz Cat Bottle (no tumbler), (slight stain inside, top been ground)
- 23 _____ #627 Ebony 4 in. Candlesticks (pair)
- 24 _____ #1675 Crystal 8 in. 3-Part Relish w/ Eagle Handle
- 25 _____ #8 Pearl Mist Seashell 11 in. Salad Bowl, Satin Exterior
- 26 _____ #34 Mandarin Gold Seashell 3-Footed, 3 in. Ashtrays (4), (minor chips on toes of 3)
- 27 _____ #3143/39 Crystal Ice-Lipped Gyro-Optic 86 oz. Jug w/ Floral Silver Overlay
- 28 _____ #668 Rosepoint 6 in. Bread & Butter Plates (2), (UNUSUAL)
- 29 _____ #156 Oyster Plates (6), (one has Cambridge label), (minor chips)
- 30 _____ #3126 Heatherbloom 7 oz. Tall Sherbet w/ Crystal Stem & Foot
- 31 _____ #25 Willow Blue Everglade 8 1/2 in. Salad Plate
- 32 _____ #24 Amber Everglade Sherbet
- 33 _____ #140 Azurite 8 1/2 in. Center-Handled Sandwich Tray
- 34 _____ W113 Milkglass 5 oz. Dolphin Stemmed Seafood
- 35 _____ #89 Crystal Mt. Vernon Tall Salt & Pepper (Cambridge labels)
- 36 _____ #25 Crystal Mt. Vernon 4 1/2 oz. Clarets (4)
- 37 _____ #119 Ebony 7 in. Basket w/ Crystal Handle
- 38 _____ #3011/9 Mandarin Gold 3 oz. Nude Cocktail
- 39 _____ #3011/9 Forest Green 3 oz. Nude Cocktail
- 40 _____ #3011/9 Moonlight Blue 3 oz. Nude Cocktail
- 41 _____ #603 Peach-Blo 4 in. Coasters (4)
- 42 _____ #1327 Forest Green Cordial/Favor Vase w/ gold decorated foot
- 43 _____ 3 in. Yardley Jar w/ Plastic Lid
- 44 _____ #135 Peach-Blo GE Hunt Scene 10 in. Cracker Plate (gold is worn)
- 45 _____ #1136 Heron 9 in. Figure Flower Frog (bubbles in base)
- 46 _____ #1917/256 Amber Mayonnaise w/ gold encrusted Blue Willow border (NICE GOLD)
- 47 _____ #551 Amber, GE #711 Etch, 13 in. 6-Part Relish (minor chips & internal bruise on base)
- 48 _____ #24 Crystal Everglade Sherbet w/ Satin Finish
- 49 _____ #555 Baroque Etch 8 1/2 in. Plates (2), (RARE)
- 50 _____ #1044 Crystal 10 in. Swan, Style III
- 51 _____ #1043 Dianthus Pink 8 1/2 in. Swan, Style I (signed)
- 52 _____ #3077 Gold Krystol Cleo 2 1/2 oz. Cocktails (4)
- 53 _____ #3077 Gold Krystol Cleo 6 oz. Tall Sherbets (4)
- 54 _____ #3077 Gold Krystol Cleo 12 oz. Footed Tumblers (4)
- 55 _____ #3130 Carmen, #731 Rosalie Etch, 8 oz. Goblet w/ Crystal Stem & Foot (UNUSUAL)
- 56 _____ #2630 Crystal Colonial Custard, Signed Near Cut (6), (minor nicks on all)
- 57 _____ #2780 Crystal Inverted Strawberry 7 in. Candleholder (base repaired)
- 58 _____ #2635 Crystal Fernland 6 in. Rosebowl (signed Near Cut)
- 59 _____ #2651 Near Cut Feather 10 1/2 in. Pitcher

- 60 _____ #2653 Near Cut Butter w/ Cover (signed), (chips on base & lid)
- 61 _____ #2631 Marjorie Near Cut Square Bowl, 9 in. square, 4 1/2 in. tall (minor chips on base)
- 62 _____ #2872 Early Cut Type Toothpick Holder (Welker Catalog I, Page 110), (has chip)
- 63 _____ #2660 Wheat Sheaf Child's Punch Bowl (signed Near Cut)
- 64 _____ #3200 Near Cut, Cut Wild Rose, 12 in. Cylinder Vase (scratches)
- 65 _____ #2699 Buzz Saw Near Cut 4 oz. Colognes w/ Original Stoppers (2), (minor chips, slight stain in both)
- 66 _____ #2631 Near Cut Syrup Jug w/ Nickle Top (signed)
- 67 _____ #2760 Daisy 6 in. Oval Banana Split Dish
- 68 _____ #2760 Crystal Near Cut 5 in. Basket w/ Daisy Pattern (signed)
- 69 _____ #2860 Lexington Banquet Bowl
- 70 _____ "Sweetheart" Child's Creamers & Covered Sugars (2 sets), (1 set signed Near Cut),
(minor chips & roughness to both sets)
- 71 _____ #2635 Near Cut Fernland Quart Jug
- 72 _____ #4022 Near Cut 8 in. Bowl (chips, scratches)
- 73 _____ #2351 Near Cut 11 in. 2-Handled Large Vase (UNUSUAL)
- 74 _____ #2656 Near Cut "Star" 1/2 Gallon Tankard Jug, Red Flashed w/ Gold Trim (worn gold, cracked handle,
base chips) & (5) #2656 Near Cut "Star" 9 oz. Tumblers, Red Flashed w/ Gold Trim (gold very worn)
- 75 _____ #2780 Green Near Cut 7 in. Bowl, Strawberry Pattern (signed), (minor roughness on rim)
- 76 _____ #2780 Carnival Marigold Inverted Strawberry Tumblers (2)
- 77 _____ #2780 Carnival Amethyst Inverted Strawberry 4 1/2 in. Bowls (3), (base chips on all 3)
- 78 _____ #2780 Carnival Amethyst Inverted Strawberry Spooner (small chip on outside upper rim)
- 79 _____ #1402/100 Royal Blue Goblet D1007-8 (chip under foot)
- 80 _____ #1402/37 Green Tally-Ho 2 1/2 oz. Handled Tumblers (4), (chip on base of 1)
- 81 _____ #1402/37 Amethyst Tally-Ho 2 1/2 oz. Handled Tumblers (4)
- 82 _____ #1307 Crystal, Rose Marie Etch, #755 3-Lite Candelabra (pair)
- 83 _____ #23 Heatherbloom Martha Washington 12 1/2 in. Plate (signed), (shows some wear)
- 84 _____ Plainware Primrose 5 1/2 in. Basket
- 85 _____ #3011/13 Forest Green Nude Brandy
- 86 _____ #935 Willow Blue, Tulip Etch, 64 oz. Jug
- 87 _____ #1235 Lt. Emerald, Grape Etch, 9 1/2 in. Bowl (signed)
- 88 _____ #13 Helio 1 lb. Candy Bottom & #96 Helio 1/2 lb. Candy Lid (chips on lid)
- 89 _____ #870 Lt. Emerald Decagon 11 in. Ctr-Handled Sandwich Tray w/ unknown Floral Cutting (minor roughness)
- 90 _____ #2361 Crystal, #523 Etch, 9 1/2 in. Vase w/ Gold Trim (gold trim worn, scratches, small chip on rim)
- 91 _____ #925 Lt. Emerald Green, #703 Etch, After-Dinner Cup & Saucer (minor chips on saucer bottom)
- 92 _____ "Cambridge Glass" Amber Advertising Prism (some gold wear, small roughness on lower front corner)
- 93 _____ "Cambridge Glass" Pistachio Advertising Prism (roughness on right front upper & lower corners)
- 94 _____ "Cambridge Glass" Pink Advertising Prism (very small roughness on lower front corner)
- 95 _____ #518 Crystal 8 1/2 in. Draped Lady (minor base chips)
- 96 _____ #198 Mulberry 4 1/2 in. Perfume (no stopper)
- 97 _____ #306 Pristine 6 in. Satin Finish Candy Box Handpainted "Ivy" w/ Gold Trim (worn gold, minor nick on lid)
- 98 _____ #897 Toilet Bottle, Epsom Salts Etched, Ebony Stopper (HARD TO FIND)
- 99 _____ #894 Toilet Bottle, Boric Acid Etched, Ebony Stopper (HARD TO FIND)
- 100 _____ #3121 7 1/2 in. Candlestick made for bobèche & prisms (no bobèche & prisms)
- 101 _____ SS#35 Crown Tuscan 4 1/2 in. x 3 1/2 in. Cigarette Box & Cover (minor nick inside lid & on 1 foot)
- 102 _____ #870 Willow Blue Cleo 11 in. Decagon Center-Handled Sandwich Tray w/ Gold Trim (minor wear to gold)
- 103 _____ #2750 Colonial Punch Bowl, Underplate, & 11 Cups (1 cup chip & crack, some cups minor nicks, wear)
- 104 _____ #1253 Violet Everglade 12 in. Vase
- 105 _____ #3143/39 Moonlight Blue Gyro Optic 86 oz. Water Pitcher (numerous scratches)
- 106 _____ Dark Amber 7 in. Jenny Lind Bowl (minor chip on foot)
- 107 _____ Dark Amber 8 1/2 in. Jenny Lind Basket
- 108 _____ #31 Azurite 9 in. Bowl w/ Purple Iridized Underside (wear to purple, stained inside)
- 109 _____ #62 Azurite 7 1/2 in. Tall Comport w/ #527 Gold Etching (signed)
- 110 _____ #3011/9 Crystal 3 oz. Nude Cocktail w/ Optic Bowl
- 111 _____ #3011/9 Amethyst 3 oz. Nude Cocktail
- 112 _____ #3011/9 Pistachio 3 oz. Nude Cocktail
- 113 _____ #500/11 Windsor Rock Crystal Cut 12 in. Bowl (BEAUTIFUL)
- 114 _____ #1338 Rock Crystal Cigarette Holder w/ Ashtray Foot (unknown cutting), (very tiny chip on foot)
- 115 _____ #1124 Crystal Pouter Pigeon Bookends (pair)
- 116 _____ #1119 Crystal Eagle Bookends (pair), (factory flaws)
- 117 _____ #1128 Crystal Scotty Dog Bookends (pair--1 solid, 1 hollow), (factory flaw on 1 ear)

- 118 _____ #427 Rubina 8 in. Candlesticks (pair), (SUPERB COLOR)
- 119 _____ #3075 Peach-Blo 1 oz. Cordial
- 120 _____ #3077 1 oz. Cordials (1 willow blue, 1 gold krystal)
- 121 _____ #1917/95 Mulberry 1 lb. Covered Candy
- 122 _____ #1583 Crystal Epergnette, No Insert (minor chips)
- 123 _____ #20 "Blue" Everglade 10 1/2 in. Vase Made into Lamp (no shade), (crystal vase stained or painted blue)
- 124 _____ #48 Crown Tuscan 9 in. Belled Vase
- 125 _____ #18 Crown Tuscan 10 in. Seashell 3-Toed Bowl w/ Gold Trim (wear to gold, slight chip on 1 foot)
- 126 _____ #1041 Crystal 4 1/2 in. Swan, Style III (signed)
- 127 _____ #1042 Crystal 6 1/2 in. Swan, Style I with feather detail (minor chip on wing)
- 128 _____ #1045 Crystal 13 in. Swan, Style III (signed), (chips on beak, very large chip on foot)
- 129 _____ #979 Amber Decagon Cream & Sugar
- 130 _____ #7966 Talisman Rose Gold Silk Screen 9 oz. Goblet
- 131 _____ #1222 Bluebell Turkey Covered Candy Container (factory flaws on tail)
- 132 _____ Stradivari/Regency 3 1/2 oz. Cocktails (4), (1 each--moonlight blue, mocha, pink, pistachio)
- 133 _____ #299 5 in. Lid for Candy Box, Crystal w/ Applied Rose Finial in Carmen (lid only)
- 134 _____ #245 Pristine 6-Piece Condiment Set (shakers slightly cloudy, minor chip on oil stopper)
- 135 _____ #575 Pristine 9 in. Cornucopia Vases (pair), (small chip on 1 foot, slight stain in each)
- 136 _____ #3104 Crystal 5 oz. Tall Hock Glasses (6)
- 137 _____ #3143 Pistachio Gyro Optic 7 oz. Tall Sherbet
- 138 _____ #1066 Emerald Green 1 oz. Cordial w/ Optic Bowl
- 139 _____ #1066 Royal Blue 5 in. Cigarette Holder w/ Crystal Ashtray Base
- 140 _____ #1066 Amber 7 in. Ivy Ball w/ Crystal Stem & Foot
- 141 _____ #427 Amber 10 in. Column Candlesticks (pair)
- 142 _____ #3500/152 Crystal w/ Floral Rock Cutting 11 in. 2-Handle, 4-Part Celery & Relish, Silver Deposit edging
- 143 _____ #1070 Amethyst Pinch Decanter & (6) #1070 Amethyst Pinch 2 oz. Tumblers (Cambridge labels)
- 144 _____ #3400/78 Amber Gloria Cocktail Shaker w/ Crystal Top
- 145 _____ Moonlight Blue Covered Candy (Moderne)
- 146 _____ W60 Milkglass Martha Washington 32 oz. Jug
- 147 _____ #3 Crystal Mt. Vernon 10 oz. Footed Tumblers (8)
- 148 _____ #5 Crystal Mt. Vernon 8 1/2 in. Salad Plates (2), (signed), (scratches)
- 149 _____ #104 Crystal Mt. Vernon 12 in. Celery & Relish
- 150 _____ #28 Heatherbloom Mt. Vernon Salt Shaker (single)
- 151 _____ #11 Heatherbloom Mt. Vernon Comport
- 152 _____ #109 Peach-Blo Mt. Vernon Dolphin 9 1/2 in. Candlestick (single)
- 153 _____ #3105 Crystal Pressed Rosepoint 5 in. Sherbet (factory flaw on foot)
- 154 _____ #3105 Forest Green Pressed Rosepoint Sherbet
- 155 _____ #3105 Royal Blue Pressed Rosepoint Sherbet
- 156 _____ #3105 Carmen Pressed Rosepoint Juice
- 157 _____ #3105 Royal Blue Pressed Rosepoint 5 in. Wines (2)
- 158 _____ #3077 Royal Blue Decagon 6 oz. Low Sherbets (2)
- 159 _____ Royal Blue Covered Sugar or Condiment (slotted lid) in Farber Holder
- 160 _____ #198 Amber Perfume w/ Complete Stopper
- 161 _____ #1121 Amber Squat Bitters Bottle w/ Chrome Top
- 162 _____ #1322 Amber 26 oz. Cut-Flute Decanter w/ Crystal Stopper (chips on stopper)
- 163 _____ #151 Ebon 3 1/2 in. Ashtrays (pair)
- 164 _____ Jade 8 1/2 in. Twist Candlesticks (pair)
- 165 _____ #847 Amber Cleo Decagon Ice Tub w/ Metal Handle (signed)
- 166 _____ #1636 Crystal Blue Jay Candle Plug
- 167 _____ #1 Carmen Twist Muddler
- 168 _____ #33 Crystal Everglade Single-Lite Candlesticks (pair)
- 169 _____ #18 Everglade Shallow Cupped 14 in. Bowl (chips on feet, shows wear)
- 170 _____ #1155 Willow Blue Everglade Candlestick (single)
- 171 _____ #56 Moonlight Blue Everglade 13 in. Footed Sandwich Plate (scratches)
- 172 _____ SS#10 Crown Tuscan 5 in. Nude Shell Comport w/ GT & Charleton Decoration, Stamped "Handpainted"
- 173 _____ #3011/9 Mandarin Gold 3 oz. Nude Cocktail w/ Crown Tuscan Stem
- 174 _____ SS#11 Crown Tuscan 7 in. Nude Shell Comport
- 175 _____ #3075 Lt. Emerald GE Hunt Scene 8 oz. Footed Tumblers (2), (minor wear to gold)
- 176 _____ #3075 Lt. Emerald GE Hunt Scene 10 oz. Footed Tumblers (2), (minor wear to gold)
- 177 _____ #20 Avocado Sugar (minor chip on 1 handle)

- 178 _____ #65 Helio Doric Column Candlesticks (pair)
 179 _____ #1040 Crown Tuscan 3 1/2 in. Swan, Style III (minor chip on 1 foot)
 180 _____ #1043 Crown Tuscan 8 1/2 in. Swan w/ Gold Trim, Style III (slight wear to gold trim)
 181 _____ #1402/41 Forest Green Tally-Ho 2-Handled, 3-Compartment Relish (bruise on 1 handle)
 182 _____ #1402/104 Forest Green Tally-Ho 14 in. Cheese Plate w/ Seat only (signed), (few chips & scratches)
 183 _____ #925 After-Dinner Cup w/ Gold Rings
 184 _____ #308 Opal Decanter w/ Stopper
 185 _____ #991 Pink 12 1/2 in. Bowl (Cambridge label), (straw mark inside bowl 1 1/4 in. long, some wear)
 186 _____ #141 Pink Wetherford Wheel-Etched 6 1/2 in. Candy Dish w/ Lid
 187 _____ #1268 Crown Tuscan GE Rosepoint 6 in. 2-Lite Candlesticks (pair), (EXCELLENT GOLD)
 188 _____ #1095 Amber, #731 Etch, 3-pc. Sugar, Creamer, & Holder
 189 _____ #868 Peach-Blo, #727 Etch, 11 in. Decagon Bottom (Liner) for Cheese & Cracker only,
 with gold trim (signed), (gold is worn, chips on base, scratches)
 190 _____ #1371 Amethyst Bridge Hound (2 minor nicks)
 191 _____ #623 Pink Hunt Scene 5-Piece Bridge Set
 192 _____ #646 Moonlight Blue Keyhole 1-Lite Candleholder (single)
 193 _____ #7966 Crystal 9 oz. Goblet w/ Talisman Rose Decoration
 194 _____ #7606 Marjorie; (4) 10 oz. Goblets, (5) 6 oz. Low Sherbets, (6) 6 oz. Saucer Champ. (nicks 2 champ.)
 195 _____ #522 Crystal Geisha Lamp on Ebony Stand w/ Shade (large chip to base)
 196 _____ #3400/96 Crystal Cruet Set (2 cruets w/ keyhole stoppers & holder), (cruets slightly cloudy)
 197 _____ #3400 Royal Blue 80 oz. Jug & Lid (lid is royal blue w/ an acorn on top), (shows wear, tiny rim chip)
 198 _____ #2630 Royal Blue, Colonial, Children's Toy Glass Set (6 Pieces includes Covered Sugar, Spooner,
 Creamer & Covered Butter (chips on butter, sugar, creamer, & sugar lid)
 199 _____ #820 Peach-Blo 7 in. Center-Handled Serving Tray (minor chips under base)
 200 _____ Mardi Gras 10 in. Vase
 201 _____ #1206 Amber 76 oz. Narrow Twisted-Optic Pitcher & (6) 12 oz. Tumblers
 202 _____ #1327 Amethyst Cordial/Favor Vases (4)
 203 _____ #6004 Amethyst 5 in. Bud Vase w/ Ball Stem & Crystal Foot (bruise on stem)
 204 _____ #1236 Carmen 8 in. Ivy Ball, Crystal Keyhole Stem & Foot (minor chip on top of ivy ball)
 205 _____ #581 Amber Powder Box & Cover, Round, 4 1/2 in. Tall including cover
 206 _____ #925 Ebony After-Dinner Cup & Saucer
 207 _____ #1263 Crystal French Dressing Bottle, Oil & Vinegar Etched (Cambridge label)
 208 _____ #3130 Gold Krystol 1 oz. Cordial
 209 _____ #3400/69 Gold Krystol Apple Blossom After-Dinner Cup & Saucer (saucer signed), (saucer foot chips)
 210 _____ #3400/83 Lt. Emerald Green Apple Blossom After-Dinner Cup & Saucer (saucer signed)
 211 _____ #26 Forest Green Everglade Creamer only (Cambridge label)
 212 _____ #1211 Pink Everglade 2-Lite Candelabrum (single), (minor roughness on 1 leaf)
 213 _____ #12 Amber Everglade 12 in. Bowl (minor chip on underside of rim)
 214 _____ #94 Helio w/ Gold Trim Sweet Pea Vase (gold is worn)
 215 _____ Azurite 4 in. Ribbed Nut Dish (UNUSUAL)
 216 _____ #1271 Primrose 7 in. Candleholders w/ Gold Sponge Decoration (pair), (gold is worn)
 217 _____ #851 Willow Blue, #695 Etch, Ice Pail w/ Tongs (signed), (slight roughness on rim)
 218 _____ #518 Draped Lady 8 1/2 in. Figure Flower Frog (minor chip to top of head)
 219 _____ #1959 GE American Beauty Etch Tall Sherbet, Airtrap Stem (UNUSUAL)
 220 _____ Special Article, Ivory 9 in. Candlestick
 221 _____ "Cambridge" Oval Sign w/ Frosted Background & Clear Letters (minor nicks to front of base)
 222 _____ #3400/38 Moonlight Blue 80 oz. Ball Jug w/ Wide Optic (repair to rim, scratches, stain inside)
 223 _____ Carmen Top Hat Ashtray
 224 _____ #3400/38 Royal Blue 80 oz. Jug w/ Lip & (6) #3400/38 RB 12 oz. Tumblers (1 tumb. rim chips, jug wear)
 225 _____ #845 Peach-Blo Keg Ice Bucket w/ Chrome Handle (signed)
 226 _____ 7-Piece Cordial Set; Crystal Holder & (6) #3109 1 oz. Tumblers (willow blue, forest green,
 pink, royal blue, amber & amethyst)
 227 _____ Epergne, 5-Lite Base #1577, w/ #1432 Arm & (3) Locking #19 Bobeches
 with (24) #7 Prisms (5-lite or 7-lite unit), (2 chips on base)
 228 _____ #1371 Tahoe Blue Bridge Hound
 229 _____ Rubina 10 1/2 in. Block Optic Vase (no green color, slight stain in bottom)
 230 _____ #577 Moonlight Blue 8 in. Horn of Plenty (minor roughness on mold seam)
 231 _____ #1321 Amber Sherry Decanter w/ Crystal Stopper & (4) #7966 2 oz. Sherry Glasses (decanter cloudiness)
 232 _____ #46 Windsor Blue 7 1/2 in. Seashell Flower Holder (factory flaws)
 233 _____ #25 Blue II 10 in. 14-Panel Bowl

- 234 _____ #3400/25 Willow Blue 5 in. Footed BonBons (pair), (1 w/ factory flaw on foot)
- 235 _____ #3035 Heatherbloom 9 oz. Goblet w/ Crystal Stem & Foot
- 236 _____ #319 Peach-Blo 9 oz. Georgian Tumbler
- 237 _____ #319 Amberina 9 oz. Georgian Tumblers (2)
- 238 _____ #319 Amber 9 oz. Georgian Tumbler (has chip)
- 239 _____ #319 Crystal 9 oz. Georgian Tumblers (6), (minor chips to 4)
- 240 _____ #319 Royal Blue 9 oz. Georgian Tumbler
- 241 _____ #319 Peach-Blo 9 oz. Georgian Tumbler (signed)
- 242 _____ #317 Carmen 5 oz. Georgian Tumbler
- 243 _____ #1201 Willow Blue 2 1/2 oz. Georgian Tumbler (signed), (minor chip on side)
- 244 _____ #1201 Amber 2 1/2 oz. Georgian Tumbler
- 245 _____ #1201 Gold Krystol 2 1/2 oz. Georgian Tumbler (signed)
- 246 _____ #1201 Willow Blue 2 1/2 oz. Georgian Tumbler (signed)
- 247 _____ #1 Experimental Blue Opaque 5 in. Seashell Plate (RARE), (minor roughness to base)
- 248 _____ #7966 Bacchus Etch 2 oz. Sherry, Unusual Amethyst Flash Decor
- 249 _____ #3400/30 Dianthus Pink 9 1/2 in. Bowl w/ Crystal Keyhole Stem & Handles
- 250 _____ #2899 Pink 3 in. Flower Frog (several large chips)
- 251 _____ #880 Willow Blue 5-pc. Bridge Set -- Holder & (4) 8 oz. Aero Optic Tumblers (minor flake on 1 tumbler)
- 252 _____ #3011/3 Peach-Blo Nude Saucer Champagne (RARE)
- 253 _____ #3011/7 Forest Green 4 1/2 oz. Nude Claret
- 254 _____ #3011/7 Amethyst 4 1/2 oz. Nude Claret
- 255 _____ #3011/7 Gold Krystol 4 1/2 oz. Nude Claret w/ Optic Bowl (minor chip on foot)
- 256 _____ #1043 Mandarin Gold 8 1/2 in. Swan, Style III (minor chips on tail, slightly stained inside)
- 257 _____ #1044 Pearl Mist 10 in. Swan (beak, feet, & interior are glossy)
- 258 _____ #3500/57 Crown Tuscan GT 3-Part Covered Candy w/ Painted Chickens Decoration (lid chip, gold wear)
- 259 _____ SS#46 Crown Tuscan 7 1/2 in. Shell Flower Holder
- 260 _____ #3 Moonlight Blue Everglade Single-Lite Candelabrum (1)
- 261 _____ #1238 Crown Tuscan 12 in. Footed Vase (top is ground)
- 262 _____ #165 Crystal Arcadia 6 in. Covered Candy
- 263 _____ P101 Crystal Rondo Cut 32 oz. Cocktail Shaker w/ Stopper (Cambridge label)
- 264 _____ P306 Crystal Lynbrook Cut 6 in. Candy Box & Cover (minor chip on finial & wear on base)
- 265 _____ #680 Amber Compact w/ Grey Cutting on Lid (minor chips on both parts)
- 266 _____ #1956/1 Ham Bone 10 in. Ashtray w/ "The Cambridge Glass Co." in gold on edge (RARE), (bottom wear)
- 267 _____ Decorator's Stool; 26 in. Tall, Refinished Maple, 4-Legged, 3 Turned Rungs on each side, from Decorating Department at Cambridge Glass Co.
- 268 _____ Amber Shaded to Smoky Black Experimental Color 9 1/2 in. Bowl
(NCC Color Book, Plate 10, Row 1, #1 for Shape), (EXTREMELY RARE), (shows wear)
- 269 _____ #173 Amber, Willow Etch, 12 in. x 10 in. Center-Handled Oval Sandwich Tray
- 270 _____ #1075 Lt. Emerald Green Decagon Cream Soups (no saucers), (6), (signed), (1 minor rim chip, 1 cracked)
- 271 _____ #39 Rubina 11 1/4 in. Wide Optic Bowl (SUPERB COLOR), (shows wear)
- 272 _____ #3060 Crystal 1 oz. Cordial w/ gold border design (gold is worn)
- 273 _____ #63 Ivory 6 in. Tall Comport
- 274 _____ #227 1/2 Blue I Candlesticks (pair)
- 275 _____ #3500/64 Royal Blue 3-Part Celery & Relish
- 276 _____ #1322 Amethyst 26 oz. Decanter & (6) #496 Amethyst 2 1/2 oz. Tumblers (minor nicks 3 tumblers)
- 277 _____ #169 Amber, #703 Etch, 3-Piece Mayo w/ Amber Ladle & Underplate
- 278 _____ #749 Ebony Decagon 6 1/4 in. 2-Handled BonBon, Heavy Gold Encrusted Floral Interior (signed)
- 279 _____ #3109 Diane 6 oz. Hollow-Stem Champagne w/ Cut Flute Stem (minor rim roughness)
- 280 _____ #33 Milkglass Seashell 3-Footed, 4 in. Ashtrays (2)
- 281 _____ W109 Milkglass Dolphin 8 in. Candlesticks (pair)
- 282 _____ #559 8 1/2 in. Crystal Salad Plate w/ green enameled Blue Willow etch
- 283 _____ #14 Amber, GE #703 Etch, Bev. Set; Decanter w/ Hollow Blown Stopper & (6) 4 1/2 oz. Tumb. (no tray)
- 284 _____ Amber, GE #703 Etch, 12 oz. Tumblers (11), (large chip on foot of 1)
- 285 _____ #1402/100 Tally-Ho Cocktail w/ Gold Flash Decor & Cutting
- 286 _____ #1402/49 Green Tally-Ho 88 oz. Pitcher (signed)
- 287 _____ #13 Azurite 11 in. Bowl (minor chips underside)
- 288 _____ #63 Helio 6 in. Tall Stemmed Comport
- 289 _____ #427 Avocado 9 in. Candlesticks (pair), (minor nicks to base of 1)
- 290 _____ #62 Azurite w/ Gold Edge 7 1/4 in. Tall Comport (gold is worn, repairs to rim)
- 291 _____ #3500/57 Crown Tuscan 8 in. 3-Part Candy Box & Cover (chips on both parts, bottom cracked)

- 292 _____ #3900/575 Crown Tuscan Cornucopia Vase, 10 1/2 in. Tall
- 293 _____ #3011/9 Mocha 3 oz. Nude Cocktail
- 294 _____ #3011/9 Pink 3 oz. Nude Cocktail
- 295 _____ #3011/9 Tahoe Blue 3 oz. Nude Cocktail
- 296 _____ #1042 Crystal 6 1/2 in. Swan, Style III
- 297 _____ #1043 Lt. Emerald 8 1/2 in. Swan, Style I (signed), (repair & chip on 1 foot, chip on base)
- 298 _____ #1044 Peach-Blo 10 in. Swan, Style I with feather detail (signed)
- 299 _____ #3400/144 Carmen Cigarette Holder w/ Crystal Ashtray Foot
- 300 _____ #1236 Royal Blue 8 in. Ivy Ball, Crystal Keyhole Stem & Foot (minor chip on top, slight stain inside)
- 301 _____ #3400/118 35 oz. Amber Decanter w/ Stopper (cloudiness, stopper damage, chips in decanter neck)
- 302 _____ #489 Amber 4-Piece Boudoir Set w/ Correct Tumbler & Tray (tray edge ground, minor nick inside lid)
- 303 _____ #1541 Square 28 oz. Decanter, Bourbon Etch (slight stain inside)
- 304 _____ #1490 Divided Mayo Bowl w/ Rock Crystal Windsor Cutting
- 305 _____ #1621 Ebony 10 in. Footed Urn Vase (repair to rim)
- 306 _____ #244 Amber, Willow Etched, 10 1/2 in. Service Plates w/ gold trim (2)
- 307 _____ #3075 Peach-Blo Hunt Scene 6 oz. Tall Sherbet, Mint Gold Encrusted
- 308 _____ #3075 Peach-Blo Hunt Scene 9 oz. Goblet, Mint Gold Encrusted
- 309 _____ #1337 Royal Blue Cigarette Holders w/ Crystal Stem & Foot (2), (chip to rim of 1)
- 310 _____ #984 Ebony Decagon 10 in. 2-Handled Bowl (signed), (minor base chips, shows scratches)
- 311 _____ #1402/5 Crystal Hunt Scene 7 1/2 oz. Footed Sherbets (3)
- 312 _____ #8701 Amber GE Hunt Scene Narrow-Optic 8 oz. Blown Tumblers (2), (slight wear to gold)
- 313 _____ #31 Crown Tuscan 8 in. 4-Footed Oval Shell Dish (signed)
- 314 _____ SS#2 Crown Tuscan Seashell 7 in. Salad Plate w/ Gold Trim, Charleton Decorated (gold is worn)
- 315 _____ Royal Blue Top Hat Toothpick or Match Holder
- 316 _____ #3500/112 Amethyst 3-Part Relish
- 317 _____ #735 Peach-Blo, Etched Martha, 12 in. Oval 4-Footed Bowl w/ gold trim (gold trim heavily worn)
- 318 _____ #32 Moonlight Blue Everglade 2-Lite Candlestick (1)
- 319 _____ #3075 Emerald Green GE Hunt Scene 5 1/2 oz. Cafe Parfait
- 320 _____ #254 Amber Cleo 5 1/2 in. Round Comport
- 321 _____ #301 Crystal Caprice Goblets (8)
- 322 _____ #300 Crystal Caprice 6 oz. Low Sherbets (12), (minor chip to rim of 1)
- 323 _____ #200 Crystal Caprice Tall Sherbets (4)
- 324 _____ #200 Crystal Caprice Wines (4)
- 325 _____ #12 Crystal Caprice 3 oz. Footed Tumblers (2)
- 326 _____ #2 Crystal Caprice Pressed 7 oz. Tall Sherbets (8)
- 327 _____ #132 Crystal Caprice 6 in. Low-Footed Oval BonBon
- 328 _____ #167 Crystal Caprice 6 in. Low-Footed Candy Box & Cover
- 329 _____ #117 Crystal Caprice 3 oz. Oil w/ Stopper (slightly cloudy)
- 330 _____ #70 Crystal Caprice 7 in. Candlesticks w/ Prism (pair)
- 331 _____ #30 Crystal Caprice 16 in. Plate (minor base chips, few scratches)
- 332 _____ #82 Crystal Caprice Shallow 13 1/2 in. 4-Footed Bowl (few scratches)
- 333 _____ #165 Crystal Caprice 3-Footed Candy Box & Cover (minor chip to underside of lid)
- 334 _____ #236 Crystal Caprice 8 in. 4-Footed Rose Bowl (minor chips to 1 foot)
- 335 _____ #74 Crystal Caprice 3-Lite Candlestick (bobeche on center candle holder), (minor roughness)
- 336 _____ #122 Crystal Caprice 8 in. 3-Part Relish
- 337 _____ #65 Crystal Caprice 11 in. 4-Footed, Handled, Oval Bowl (chip 1 foot, roughness 1 handle, bottom stain)
- 338 _____ #76 Crystal Caprice 3-Lite Epergne w/ Bobeche & (4) Prisms; (2) 5 1/2 in. Vases;
(1) Arm (slight edge crack on 1 vase)
- 339 _____ #33 Crystal Caprice 14 in. 3-Footed Cabaret Plate (some scratches)
- 340 _____ #30 Crystal Caprice Individual Salt & Pepper in glass base (minor chips on bases)
- 341 _____ #65 Crystal Caprice 4-Footed Oval Bowl
- 342 _____ #13 Crystal Caprice 3 1/2 in. Coasters (4), (minor chips on 2)
- 343 _____ #16 Crystal Caprice Finger Bowls (ground bottom), (2)
- 344 _____ #171 Crystal Caprice 6 in. Diamond (minor roughness)
- 345 _____ #252 Crystal Caprice 4 1/2 in. Blown Vase (minor chip on rim & side)
- 346 _____ #173 Crystal Caprice 6 in. Cloverleaf (minor chip to underside)
- 347 _____ #124 Caprice Alpine 8 1/2 in. Pickle & Relish
- 348 _____ #188 Amber Caprice 2 oz. Tumblers (2), (tiny nicks to rim of 1)
- 349 _____ #3 Moonlight Blue Caprice 4 oz. Cocktails (7)
- 350 _____ #207 Moonlight Blue Caprice 3 1/2 in. x 2 1/2 in. Cigarette Box w/ Cover

351 _____ #93 Moonlight Blue Caprice 2 1/2 in. Individual Nut Dish

THE REMAINING LOTS ARE ALL ETCHED PATTERNS:

352 _____ #3400/67 Apple Blossom 12 in. 5-Part Relish (has chips)
 353 _____ #3130 Crystal Apple Blossom 1 oz. Cordials (2)
 354 _____ #3400/52 Apple Blossom 5 1/2 in. Butter & Cover (signed), (minor flake on finial)
 355 _____ #3600 Chantilly 1 oz. Cordials (3)
 356 _____ #3900/22 Chantilly 8 in. Sandwich Plates (2), (scratched, minor nicks to base of 1)
 357 _____ #274 Chantilly 10 in. Footed Bud Vase
 358 _____ #3400/16 GE Diane 6 oz. Cream & Sugar (wear to gold)
 359 _____ Stradivari/Regency Diane Teas (3)
 360 _____ #3400/90 Elaine 6 in. 2-Part, 2-Handled Relish
 361 _____ #19-1 Elaine 4 in. 2-Lock Bobeche w/ Prisms
 362 _____ #3500/56 Minerva 2-Handled 7 in. Footed Basket (pulled up unusually high)
 363 _____ #3500 Minerva 8 1/4 in. Sandwich Plates (4), (signed)
 364 _____ #3400/707 GE Portia 11 in. Footed Cake Plate (gold is worn, scratches)
 365 _____ #147 Portia 8 oz. Marmalade & Cover
 366 _____ #646 GE Portia Keyhole 5 in. 1-Lite Candlesticks (pair), (minor wear to gold)
 367 _____ #3121 Rosepoint 1 oz. Cordial (minor factory flaws inside top)
 368 _____ #3900/62 Rosepoint 12 in. 3-Footed, Flared Bowl (small chip on 1 foot)
 369 _____ #3500/57 Rosepoint 3-Part Covered Candy
 370 _____ #3121 Rosepoint 8 1/2 in. Goblets (12), (3 with minor rim chips)
 371 _____ #3400/1180 Rosepoint 5 1/4 in. 2-Handled BonBon (minor nicks to base)
 372 _____ #3500/57 GE Rosepoint 3-Part Candy & Cover (1 chip on lid, minor wear to gold)
 373 _____ #3500/68 Rosepoint 2-Part Handled Nappy (minor nicks on foot)
 374 _____ #3500/148 Rosepoint 6 in. Comport
 375 _____ #1398 Rosepoint 13 in. Bowl (few scratches)
 376 _____ #495 (Martha blank) Rosepoint 5 1/2 in. 2-Lite Candleholders (pair), (minor chip on base of 1)
 377 _____ #3400/38 Rosepoint 80 oz. Ball Jug
 378 _____ #3500 Rosepoint 5 in. Blown Finger Bowl (1 chip on rim)
 379 _____ #3500/74 Rosepoint 4 in. Candlesticks w/ Ram's Head (pair)
 380 _____ #3500/67 Valencia 6-Piece Relish Set (base chip on round centerpiece & to 3 other sections, scratches)
 381 _____ #1402/95 Tally-Ho Valencia Twin Salad Dressing Bowl (no underplate or ladle), (minor chips on rim)
 382 _____ #3500/57 GE Wildflower 8 in. 3-Compartment Box w/ Cover (NICE GOLD)
 383 _____ #3400/67 Wildflower 12 in. Celery & Relish Dish

November Quarterly Meeting Minutes

Cambridge Country Club

November 7, 1998

President Rick Jones called the meeting to order after our dinner. The members voted to waive the reading of the August Quarterly Meeting Minutes and to approve them as published in the *Crystal Ball*.

Charles Upton presented the **Treasurer's Report**. The total of moneys on hand that we can spend right now is \$17,276. Investment Portfolio Analysis Totals as of October 31, 1998: Cash and Cash Equivalents, \$17,276; Income, \$15,689; Aggressive Income, \$27,943; Growth and Income, \$84,538; and Growth, \$33,477. These total up to \$178,923, which is distributed among our funds as follows: Operating (unrestricted), \$71,966; Museum (partially restricted), \$58,724; Building (partially restricted), \$39,099; and Endowment (restricted), \$9,134.

This year, we have diversified our portfolio. Edward Jones, our brokerage firm, has a committee who designates how an organization such as ours should invest. In each of the above categories, Cash and Cash Equivalents, Income, etc., we are following their recommendations. Even though the stock market took a hit this year, we started our investing with \$96,000 and two and a half years later we have \$180,000. This year, we also had the best auction and flea market in our club's history. Charlie stated that if anyone would like copies of the reports, he will be glad to give them to you.

Discussion followed which brought up a couple of points for us to consider. Our next critical decision will be to determine how much of our assets do we spend on a new museum. Also, what else will we need in terms of fundraising, grants, and promotions.

Budget and Finance: Dennis Snyder was not present at the meeting, but a current flood loss total of \$4,400 and a donation total of \$8,700 were reported.

Corresponding Secretary: Charlie Upton requested that we please send in our membership cards when renewing so that he has our membership number, expiration date, and address.

Membership: Jeff Ross reported that we are up 15 members with a total of 1,355. This total is made up of 975 master members, 373 associates, three lifetime, and four honorary. New members come in from shows; and the Harrisburg, PA, show will be in two weeks, and a show is also coming up in Connecticut.

Museum Relocation: Cindy Arent reported that the

committee has been hard at work in driving around and locating possible sites. She gave us a brief summary of eight possible sites and what the committee has investigated about each of them. One of the sites is an Ohio Power building, which is downtown off of Wheeling Avenue. Approximately 20 people visited the building this morning. President Rick described the rooms in the building and how we might use them. He also informed us that the asking price is \$380,000, but that now we have something tangible to go after. Club members discussed what we need to look for in location and visibility. We also talked about going after grants, and Bryan Roberts and Oscar Knicely volunteered to serve on a Grants Committee.

Museum Interior: Lynn Welker reported that all of the glass has been packed and that most of the loaned glass has been returned. The museum-owned glass is also packed and safely locked up. Lynn stated that all of the committee members had worked very hard to get this done, and that Marybelle worked constantly for two months. If you know someone with glass who hasn't yet heard from the museum, please let them know. The leftover items, about 65-70 pieces, were published in the *Crystal Ball*. If you know about any of these, please let the committee know also. Club members thanked Lynn, Marybelle, and all of the volunteers who worked on taking care of all the glass.

Nominating: The group of members who develop the slate for next year's election has been invited. They are Diane and Ed Chamberlain, Joe Andrejcek, and Judy and Ken Rhoads.

Projects: Bill Hagerty reported that 177 pair of salt and pepper tops have been sold this year. Bill informed us of an exciting Scottie Dog Bookend project and showed us dogs from a test run made by Mosser Glass. They will be made in Moonlight Blue as a Special Edition in 1999 only, and they will be marked with NCC 99 and the Mosser logo. The dogs will be made after the first of the year, so we want to see how many orders we can get before then! A pair of Scottie Dogs will cost \$100, plus \$10 for shipping unless you pick them up, plus tax if you pick them up or if you are an Ohio resident. President Rick then introduced NCC members Tom and Leslie Connors from Allentown, PA, who are also members of the Wee Scots collectors' club and who started this idea. If we sell 400 pair, after expenses we will have a profit of \$32,000 which can go to a new museum! This project is to raise money for a new

(Continued on page 16)

(RESCUE - Continued from page 15)

museum. It is a 1999 project and we will sell as many as we can in 1999.

Publications: The *Caprice* book will be ready the first of December. Thanks to George Stamper for getting the originals for the *Caprice* book, the *1956-58 Catalogue*, and the *Rose Point* book. George was asked to chair a committee to investigate the idea of a very rare book.

Publicity: Press Kits will be sent out soon, so please get addresses for Cindy Arent!

1999 Glass Show: Mary Beth Hackett and Joy McFadden will be back as our co-chairs.

1999 Glass Dash: Bud Walker reported that due to its popularity, we're going to raise the price a little and limit the number of tables to four. Profits were up this year.

Crystal Ball: Lorraine Weinman thanked those who have been contributing and asked that we please continue to send in our contributions to the *Crystal Ball*.

1999 Auction: Club members gave a big thanks to Lynn Welker for his past and continued involvement, and to the new people, Dorothy and Squeek Rieker, and Tom and Noreen Kullman, who have done a wonderful job in following a legend.

Old Business: None.

New Business: Club members passed a motion which had been published in the *Crystal Ball* concerning a one-word change to the By-Law regarding our accounting procedure. The By-Law was changed from a financial "review" to a "compilation."

Anna Walker talked about the Harrisburg Show and invited everyone to attend and to help if possible. The Harrisburg Show is over Thanksgiving weekend, and we are getting a booth and cases to use at no charge. The display will feature etchings. We are also trying to get into the Atlantic City show, which has eight dates.

A show in Hartford, Connecticut, which will take place December 4 and 5, has been renamed the "Cambridge Boosters Show." The club, who sponsors this show, has given us a booth at no charge, and the entire profit taken at the gate will be given to the NCC.

The meeting was then adjourned.

Respectfully submitted,

Lynne R. Franks
Secretary

LETTERS
FROM
MEMBERS AND
FRIENDS

Dear Friends,

This letter was written to my great aunt, Miss Jennie Noble, by Arthur J. Bennett in December 1934. She was secretary to The Cambridge Glass Company treasurer, G. Roy Boyd, and was responsible for obtaining a job for my aunt, Mary Martha Mitchell.

Jennie Noble passed away at work in 1944.

This letter parallels the NCC in many ways.

Enjoy,
Cindy Arent

THE TEXT READS:

Cambridge Ohio USA
Dec 1934

Dear Shipmate

Our good ship "The Cambridge" has weathered the storms for thirty-two years and has proved worthy, safe and reliable. Your travels with us have been interesting and mutually pleasant.

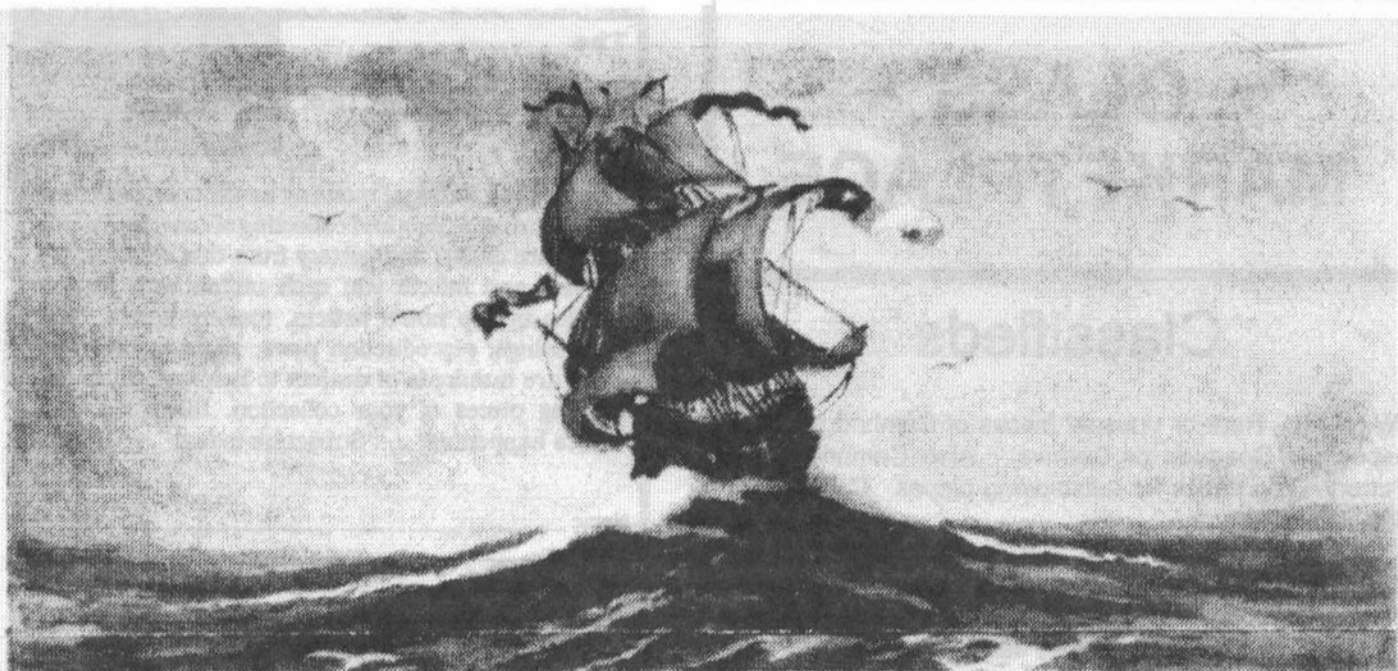
Our crew from Captain to Bell Boy wish to express their thanks to you for your loyal support the past year.

We embark on a new voyage in 1935 with Sails set and colors flying and each member of the crew determined to render greater service. They welcome all old passengers and expect many new ones.

Inception of what we have for you will sustain the ship's reputation, and you will book to sail with us again.

As proud skipper of this good ship since it first entered the "Trade Seas" I again wish you a Merry Christmas and Happy New Year and that goes for all the officers and crew.

Sincerely yours,
Arthur J. Bennett



January 1935				
1	2	3	4	5
6	7	8	9	10
11	12	13	14	15
16	17	18	19	20
21	22	23	24	25
26	27	28	29	30
31				

February 1935				
		1	2	
3	4	5	6	7
8	9	10	11	12
13	14	15	16	17
18	19	20	21	22
23	24	25	26	27
28	29			

March 1935				
			1	2
3	4	5	6	7
8	9	10	11	12
13	14	15	16	17
18	19	20	21	22
23	24	25	26	27
28	29	30		

April 1935				
1	2	3	4	5
6	7	8	9	10
11	12	13	14	15
16	17	18	19	20
21	22	23	24	25
26	27	28	29	30

May 1935				
		1	2	3
4	5	6	7	8
9	10	11	12	13
14	15	16	17	18
19	20	21	22	23
24	25	26	27	28
29	30	31		

June 1935				
				1
2	3	4	5	6
7	8	9	10	11
12	13	14	15	16
17	18	19	20	21
22	23	24	25	26
27	28	29	30	31

Cambridge Chi Ltd
Dec 1934

Dear Shipmate

Our good ship "The Cambridge" has weathered the storms for thirty-two years and has proved worthy, safe and reliable. Your travel with us has been interesting and mutually pleasant.

Our Crew from Captain to Bell Boy wish to express their thanks to you for your loyal support the past year.

We embark on a new voyage in 1935 with Sails set and colors flying and each member of the crew determined to render greater service. They welcome all old passengers and expect many new ones.

Inspiration of what we have for you will sustain the ships reputation, and you will look to sail with us again.

As the grand skipper of this good ship since it first entered the Trade Sea Japan wish you a Merry Christmas and Happy New Year and that goes for all the officers and crew.

Sincerely yours
Arthur Bennett

July 1935				
1	2	3	4	5
6	7	8	9	10
11	12	13	14	15
16	17	18	19	20
21	22	23	24	25
26	27	28	29	30
31				

August 1935				
		1	2	3
4	5	6	7	8
9	10	11	12	13
14	15	16	17	18
19	20	21	22	23
24	25	26	27	28
29	30	31		

September 1935				
1	2	3	4	5
6	7	8	9	10
11	12	13	14	15
16	17	18	19	20
21	22	23	24	25
26	27	28	29	30
31				

October 1935				
		1	2	3
4	5	6	7	8
9	10	11	12	13
14	15	16	17	18
19	20	21	22	23
24	25	26	27	28
29	30	31		

November 1935				
			1	2
3	4	5	6	7
8	9	10	11	12
13	14	15	16	17
18	19	20	21	22
23	24	25	26	27
28	29	30		

December 1935				
1	2	3	4	5
6	7	8	9	10
11	12	13	14	15
16	17	18	19	20
21	22	23	24	25
26	27	28	29	30
31				

~ GLASS ~ MARKETPLACE

Classifieds

WANTED: Rare or unusual pieces of Cambridge Glass especially Opaques or Carnival. Also Cambridge Art Pottery. Top prices for outstanding pieces. **Call collect 609-965-2413.**

WANTED: "Any piece of Cambridge Etch 520, in pink." Please e-mail at dhmjh@ibm.net or phone (714) 538-6656. Thanks. Mary Jane.

WANTED: Cambridge Georgian tumblers, 12-oz. size, in Cobalt, light or dark Emerald, Heatherbloom, Crystal, or Amber. Please call (214) 977-1302 (office) or (972) 699-1730 (home). Thanks! Lucia Bryant.

WANTED: Rare or unusual pieces of Cambridge Glass, Rose Point, 3106 Rose Point stems, Marjorie etched items, decorated opaques, Cambridge Art Pottery, nude stems, swans, and novelty items. **Contact Jim & Nancy Finley, 711 W Broadway, Sedalia, MO 65301, (660) 826-5032 or e-mail: nFinley@iland.net.**

ADVERTISE HERE NOW!

You never know who you are missing.

Bogart's Bed & Breakfast

62 W. Main Street, New Concord
New Concord lodging in 1830 Federal
Style home, decorated with
antiques throughout.



Bogart's Antiques
7527 E. Pike, Norwich OH
Quality Antiques Bought & Sold

OWNERS: Jack & Sharon Bogart
872-3514 or 826-7439

The **DAZE** Inc.

The Original National monthly newspaper dedicated to the buying, selling and collecting of American made glassware china, and pottery from this century. We educate and inform you each month with feature articles by top notch writers, readers letters, club happenings, reproduction news, show reports and there are hundreds of dealers to help you fill in the missing pieces of your collection. "Keep up with what's happening" . . . Subscribe today!

Name _____
Street _____
City _____
State _____ Zip _____
 1 year \$21.00 2 years \$40.00 \$2.00 Single Copy
Subscription Hot Line: 1-800-338-9927
Exp. Date _____ Card No. _____
Signature _____

Orders to:

The Daze, Inc., Box 57, Otisville, MI 48463

Please allow 30 days for your first issue - Canadian Subscribers, add \$1.00 per year and subscribe by charge card only! This Special Offer may not be combined with any other special offer.
Offer Expires December 31, 1996



Stems Without Thorns

As the world's largest supplier of discontinued and active china, crystal, flatware and collectibles, Replacements, Ltd. has over 325 different patterns of Cambridge crystal.

And however much we enjoy selling pieces which were once thought irreplaceable, we love buying them as well. Thanks to people like you, our crystal inventory currently numbers in the hundreds of thousands, and the numbers keep growing every year.

So, if you've been unsuccessfully searching for that elusive piece of Cambridge - or any other type of fine crystal - call us for a free list of pieces available in your pattern. And, if you're looking to sell pieces you currently have, we can help you there, too.

REPLACEMENTS, LTD.
China, Crystal & Flatware • Discontinued & Active

1-800-REPLACE
(1-800-737-5223)

1089 Knox Road
PO Box 26029 Dept. CB
Greensboro, NC 27420

DEALERS



DIRECTORY

NOTE: When writing to the dealers listed here, please enclose a SASE!

<p>DAUGHERTY'S ANTIQUES Jerry and Shirley</p> <p>Antiques and Collectibles * Mostly Glass</p> <p>Shows & Mail Orders 2515 Cheshire No. 402-423-7426 Evenings Lincoln NE 68512</p>	<p>"HAPPINESS IS" Buddy and Kathy Stultz</p> <p>3106 Warren Court, Glen Allen, VA 23060 804-672-8102</p> <p>Specializing in American Made Glass We Buy & Sell, Shows & Mail Order</p>	<p>THE JONES GROUP Cindy Jones</p> <p>Buy and Sell Cambridge Glass 650 Riverside Drive Sleepy Hollow, NY 10591 914-631-1656 or E-Mail Caprice0@aol.com</p>
<p>Milbra's Crystal Replacement and Matching</p> <p>Buy & Sell Specializing in: Cambridge Fostoria Heisey and others</p> <p>Milbra Long (817) 645-6066 Emily Seate (817) 294-9837 PO Box 784, Cleburne, TX 76033 E-mail: longseate@flash.net</p>	<p>YOU CAN ADVERTISE YOUR ANTIQUe SHOP HERE!</p>	<p>MARY JANE'S ANTIQUES Mary Jane Humes</p> <p>2653 Burgener Dr., Decatur, IL 62521 Depression Era Items Cambridge and Other Elegant Glass mjhumes@aol.com 217 422-5453</p>
<p>THE GLASS URN 458 West Main Street, Suite G Mesa, AZ 85201 602-833-2702</p> <p>Mail Order Shows Open Shop</p> <p>CAMBRIDGE, FOSTORIA, HEISEY, ETC.</p>	<p>ANTIQUES ON THE MALL SPECIALIZING IN CAMBRIDGE GLASS</p> <p>Bogart's - Bldg. #3 - Norwich, OH</p> <p>Virginia Bennett 740-432-4483 64183 Warne Drive, Cambridge, OH 43725</p>	<p>GATEWAY ANTIQUE MALL, INC. JUST NW OF MINNEAPOLIS-ST. PAUL, MN Next to Super 8 in Rogers, MN (I-94/101 Intersection)</p> <p>85 Dealers 7 Days, 10-6 612-428-8286 ELAINE STORCK, OWNER/DIRECTOR</p>
<p>THE DEGENHART PAPERWEIGHT AND GLASS MUSEUM, INC.</p> <p>P. O. Box 186 Cambridge, Ohio 43725-0186 Intersection of US 22 & I 77 Phone 740-432-2626</p>	<p>D & D ANTIQUES</p> <p>Columbus, Ohio</p> <p>Dick Slifko SHOWS ONLY</p>	<p>JAMESTOWN ANTIQUES 16 E. Washington St., Jamestown, OH 45335</p> <p>Rosepoint and Cambridge our Specialty Shows and Shop (chance or appt.)</p> <p>Buy (937) 675-6491 Sell Susan and Larry Everett</p>
<p>THE GLASS CUPBOARD</p> <p>P. O. Box 652 West End, North Carolina 27376</p> <p>Marcia Ellis Cambridge, Heisey 910-673-2884 Shows, Mail Order</p>	<p>JUDY'S ANTIQUES Judy Bennett</p> <p>422 S. Ninth Street (Corner of Jefferson) Cambridge, Ohio 43725 Bus. 740-432-5855 Res. 740-432-3045</p> <p>CAMBRIDGE GLASS MY SPECIALTY</p>	<p>Horse'n Around Antiques Kelvin and Heather Moore</p> <p>Exit 69 on Interstate 64 Woodlawn, IL 62898 e-mail: hmoore@midwest.net TEL: 618-735-9114</p> <p>Specializing in Cambridge and other Elegant Glass</p>
<p>FINDER'S ANTIQUE HOUSE 3769 Highway 29 North Danville, VA 24540 (804) 836-6782 Cambridge-Heisey-Duncan-Fostoria</p>	<p>GREEN ACRES FARM</p> <p>2678 Hazelton Etna Rd., Pataskala, OH 43062 (State Route 310 North)</p> <p>Sat & Sun 1-7 PM 740-927-1882 Antiques, Crystal Glass and Collectibles</p>	<p>CRYSTAL LADY</p> <p>1817 Vinton St., Omaha, NE 68108</p> <p>Bill, Joann, and Marcie Hagerty</p> <p>Bus. 402-341-0643 Res. 402-391-6730 Specializing in Elegant Glass & Collectibles</p>
<p>YOU CAN ADVERTISE YOUR ANTIQUe SHOP HERE!</p>	<p>YOU CAN ADVERTISE YOUR ANTIQUe SHOP HERE!</p>	<p>PENNY COURT MALL 637 Wheeling Avenue Cambridge, Ohio</p> <p>100 Booths 15,000 sq. ft. HOURS: Daily 10-6 Sunday Noon-5 Closed: Easter, Thanksgiving, Christmas Call for Other Holiday Hours 740-432-4369</p>
<p>MICHAEL KRUMME Cambridge and other elegant glassware</p> <p>(213) 874-GLASS e-mail: mkrumme@pacbell.net website: http://www.glassshow.com</p> <p>PO Box 48225 Los Angeles CA 90048-0225 Send your want list</p>	<p>Warren and Mary Welsh Cambridge & Other Elegant Glassware</p> <p>3635 Saddle Rock Rd., Colorado Springs, CO 80918 (719) 531-5866 WELS@EARTHLINK.NET</p> <p>MAIL ORDER SHOWS</p>	<p>MARGARET LANE ANTIQUES</p> <p>2 E. Main St., New Concord, OH 43762 Lynn Welker 740-826-7414</p> <p>Cambridge Glass Matching Service Hours Mon-Fri 10-12 AM, 1-5 PM or by Appointment</p>
<p>ISAACS ANTIQUES (740) 826-4015</p> <p>See our booths in Penny Court Mall in Cambridge and White Pillars Antique Mall at Rt. 40, one mile west of I-70 Norwich Exit #164</p>	<p>ALADDIN LAMP BOOKS Free List</p> <p>Figurine Lamps Wanted Bill & Treva Courter</p> <p>3935 Kelley Rd. Kevil, KY 42053 Phone/FAX 502-488-2116</p>	<p>DEXTER CITY ANTIQUE MALL</p> <p>P. O. Box 70, Dexter City, Ohio 45727 (740) 783-5921</p> <p>Located on Ohio St. Rt. 821 Between Exits 16 & 25 off I-77 Just 30 min. South of Cambridge, Ohio</p>

NOTICE:

When you renew your
membership,
PLEASE
return your cards.
It is important that we
have your:
membership #
current mailing address
date of renewal

WASHBURN'S SAN ANTONIO SHOW AMERICAN GLASS, CHINA AND POTTERY

Feb 13, 1999 9:00-5:00
Feb 14, 1999 10:00-4:00

Live Oak Civic Center

8101 Pat Booker Rd

Live Oak (San Antonio), TX 78233

Admission \$5.00 -- Good Both Days
(\$2.00 Off With This Card)

Depression, Elegant, Other Collectible Glass
Fiesta, Dinnerware and Pottery

NEXT SHOW FEB 12 & 13, 2000

For Information:

Kent Washburn
210-599-0635/WashburnK@aol.com

8048 Midcrown, Suite 25
San Antonio, TX 78218-2334

National Cambridge Collectors Inc
PO Box 416
Cambridge OH 43725-0416

<http://www.cambridgeglass.org>
e-mail: NCC_Crystal_Ball@compuserve.com

FIRST CLASS MAIL
U.S. POSTAGE
PAID
PERMIT NO. 1
CAMBRIDGE, OH

FIRST CLASS MAIL

Membership Renewal Notice

**If the date on your address label is 1-99,
this is your LAST ISSUE of the Crystal Ball.**
Please take a moment and renew now. Thank you!