



Cambridge Crystal Ball

Published monthly by National Cambridge Collectors, Inc.
to encourage and report the discovery of the elegant and boundless product of the
Cambridge Glass Company of Cambridge, Ohio

Issue No. 311

March 1999

NCC Convention 1999 Start Making Plans Now

by Mark A. Nye, Convention Chairman

Those of us who have been attending NCC conventions for more years than we want to admit to sometimes tend to forget that what we consider routine and fully understand how it works is new and unknown to the members planning to attend their first convention. One of the points in question is how the preregistration and registration process unfolds or takes place.

Early in the year, plans for the upcoming convention are published in the *Crystal Ball* through articles and tentative event schedules. These usually appear in the January through April issues. Included in the May issue is the actual preregistration form. Members planning on attending the convention are asked to complete the form, indicating which events they plan on attending (there is no obligation to attend any set number of events or any specific event), and return it to NCC along with their payment prior to a given date. This year it is June 10. This preregistration is done so we may provide our caterer with

accurate numbers attending each meal. We pay for the number of meals ordered, not the number actually attending a function. We also use the preregistration information to prepare the convention packets given to each attendee. The cut-off date is set two weeks prior to the opening of the convention so the caterer can place the necessary orders and the convention committee can prepare final lists and complete the convention packets.

The Convention Registration Fee includes weekend admission to the All Glass Show and to all the education events, Bring & Brag, Glass Identification, and the Former Workers Reunion. It DOES NOT include admission to the Glass Dash, formerly known as the NCC Flea Market. Admission to the Glass Dash is paid at the time you enter the event on Saturday morning. The Registration Fee entitles each registrant to a convention souvenir and a copy of the convention souvenir booklet. Also included in the Registration Fee is admission to the Get-Acquainted Picnic and Continental Breakfast. There are separate charges for the Friday Night Dinner, the Annual Banquet on Saturday night and the Sunday Morning Buffet Breakfast. There is no charge to attend the Annual Meeting that follows the Sunday Breakfast. You can skip breakfast and come directly to the meeting.

When convention attendees arrive in Cambridge, one of
(Continued on page 4)

Inside This Issue:

Public Displays of Affection
Tentative 1999 Convention Event Schedule
Convention Motel Information
Carnival Treasures
Little Things
Heart Addendum
Scottie Dog Bookend Order Form

Cambridge Crystal Ball

Official publication of National Cambridge Collectors Inc., a non-profit corporation with tax exempt status. Published once a month for the benefit of its members. All rights reserved; reproduction in whole or in part without written permission of NCC and the author is prohibited.

Membership is available for individual members at \$17.00 per year and an additional \$3.00 for associate members (12 years of age and older, residing in the same household). Of the master member dues, \$12.00 is credited to a one-year subscription to the *Crystal Ball*. All members have voting rights, but only one *Crystal Ball* per household. **Multi-year memberships are available: 2 years for \$33.00, 3 years for \$49.00.**

1998-1999

OFFICERS AND COMMITTEE CHAIRPERSONS

President	Richard D. Jones
Vice President	Tarzan Deel
Secretary	Lynne Franks
Treasurer	Charles Upton
Sergeant-at-Arms	Michael Neilson
Acquisitions	Kelvin Moore
Budget & Finance	Dennis Snyder
By-Laws	Bud Walker
Corresponding Secretary	Charles Upton
Technology	Tarzan Deel
Membership	Jeff Ross
Museum Relocation	Richard D. Jones
Museum Facilities	Carl Beynon, Joe Miller
Museum Interior	J.D. Hanes, Marybelle Teters
Non-Glass Items	Tarzan Deel
Nominating	Joy McFadden
Program	Bill Hagerty
Projects	Bill Hagerty
Publications	Mark A. Nye
Publicity	Cynthia A. Arent
Study Group Advisor	Marybelle Teters
1999 Convention	Mark A. Nye, Bud Walker
1999 Auction	Squeek and Dorothy Rieker, Tom and Noreen Kullman, Lynn Welker
1999 Glass Show	Mary Beth Hackett, Joy McFadden
1999 Glass Dash	Bud Walker, Mike Arent
<i>Crystal Ball</i> Editor	Lorraine Weinman
<i>Crystal Ball</i> Circulation Directors	Lisa and Mike Neilson
WebMaster	Don Stevens

Internet website: www.cambridgeglass.org

DUE TO FLOODING IN CAMBRIDGE, OHIO, THE NATIONAL CAMBRIDGE COLLECTORS' MUSEUM OF CAMBRIDGE GLASS AT 9931 EAST PIKE ROAD WILL NOT BE OPEN.

THE TEMPORARY NCC MUSEUM IS LOCATED IN PENNY COURT MALL IN DOWNTOWN CAMBRIDGE, OHIO.

ADVERTISING RATES

Display Rates (camera ready ads preferred)

Unit	Members	Non-Members
Full Page	\$45.00	\$60.00
3/4 Page	\$35.00	\$50.00
1/2 Page	\$25.00	\$35.00
1/4 Page	\$15.00	\$25.00
1/8 Page	\$10.00	\$15.00

(\$5.00 additional if a photograph is included in display ad)

Classified Rates

10 cents a word \$2.00 minimum

Abbreviations and initials count as words. Type sizes cannot be mixed in classified ads. **Payment in full must accompany all ad copy.** Contact Editor for copy assistance.

Dealer Directory

Six Line Maximum \$24.00 for 12 month contract

Also included - Listing on our Internet site at:

www.cambridgeglass.org

Cambridge *Crystal Ball* assumes no responsibility for items advertised and will not be responsible for errors in price, description, or other information.

Advertising copy, letters, articles, must be received by the 5th of preceding month to be considered for publication in the next issue.

Please address all correspondence (include SASE) to:
(or E-Mail NCC_Crystal_Ball@compuserve.com)

National Cambridge Collectors, Inc.

P.O. Box 416

Cambridge, OH 43725-0416

President Rick Jones	914-631-1656
	or E-Mail Caprice0@aol.com
Vice President Tarzan Deel	540-869-3949
Secretary Lynne Franks	216-661-7382
NCC Museum: Phone	740-432-4245
Fax	740-439-9223

Please notify us immediately of any address change.

Opinions or information stated in any signed article or letter printed in the *Crystal Ball* are those of the author and may not agree with National Cambridge Collectors, Inc. The Editor reserves the right to refuse and to edit any material submitted for publication to conform to the editorial style of the *Crystal Ball*. Members are encouraged to write to NCC and the *Crystal Ball* sharing their knowledge and questions!

President's Message



Public Displays of Affection

How do you display your Cambridge Glass?

Frequently, we write about the spirit of the hunt, the joy of finding new pieces for your collection, the occasional bargains we find, and the value in learning more about the history of Cambridge Glass and the fine lines they produced. One way Cambridge collectors show their love of the glass is in how they display it.

From our visits with various Cambridge collectors, it is great to see the pride they take in their collections. No two people display them identically. How you show off your glass can be a personal statement, and for some, it is as much fun deciding how to display it as it is to collect it.

We have friends who can represent opposite sides of the spectrum. One couple seems to have more invested in their display cabinets than they do the glassware. We've never seen more beautiful oak cupboards and curio cabinets in our lives!

Another couple, who will kill me when they read this, have avoided buying nice display cases because that's money they wouldn't be able to spend on glass! I'm sure there are several people like this!

Other homes have a mini-museum room. It's really very striking to walk in their homes and be ushered to a special room they have created to display their Cambridge. The feeling is almost one of reverence.

The one consistent thing, through all the decorating styles, is the pride people have in the collections. They enjoy sharing it and do so with immense smiles on their faces. It is a very special part of being a Cambridge collector.

Increasingly, the club is taking these smiles on the road with very public displays of affection. In just the last two years, there have been more than a half dozen public exhibits of the fine glassware made by Cambridge.

Charles Upton, our treasurer, recently created a display for the Zanesville, Ohio Art Center. Our Miami Valley Study Group created a series of displays most recently in a Springfield, OH museum. Both were beautifully done, and with immense pride.

Our Mid-Atlantic Study Group twice in the past year coordinated striking displays of etchings and colors at the Harrisburg, PA show. Coordinating this takes a ton of work and is a labor of love to which our club owes all a debt of gratitude.

In December, the Connecticut Cambridge Boosters allowed NCC to create an Etchings display at their glass show. This display brought a lot of attention to NCC and helped sell several books and generate new members.

All of these public activities bring wonderful attention to our club and the NCC Board welcomes and encourages all members to seek this type of promotion in their area. In April, our Rocky Mountain members will coordinate a display at their annual show. This is great stuff and shows our pride in Cambridge Glass and gets the word out on the mission of NCC.

The best display of the year, however, will be at the Annual NCC Convention this June and I'd like to encourage every member and their friends to join us this year. 1998 was a very difficult year for NCC. When we should have been joyous at our 25th Anniversary (which we were for a while), severe flooding ravaged the Cambridge area. Many area families suffered personal loss and we sustained devastating damage to our centerpiece, The Museum of Cambridge Glass.

This year's Convention will be a chance for us all to gather and remember the real purpose of NCC, the preservation and education of Cambridge Glass. This is a club built by the hard work of many people to whom we owe a big debt of gratitude. They laid a foundation for us to build on through the fellowship of collectors who share a similar love and pride.

Now would be a smart time to begin planning for June. We would like our biggest crowd ever, a real public display of affection. See you there?

Pick

(CONVENTION 1999 - Continued from page 1)

the first stops to be made is to go to the Convention Registration Desk, located in the Pritchard Laughlin Civic Center and pick up registration packets and souvenirs. The packets contain name tags which serve as your admission ticket to the All Glass Show, Picnic and Continental Breakfast; the final Convention Schedule, list of Convention Attendees and other information. For first-timers, the Convention Desk can also provide information regarding Cambridge and directions to various points in town. Picking up your packets is the final step in the Convention Registration Process.

While we can accommodate a few registrations after June 10, seating at the food functions cannot be guaranteed.

All of the motels are grouped together, several miles from the Civic Center, and thus none offers any advantage of nearness to the convention site. Directions to the Civic Center from the motels will be published in the June issue of the *Crystal Ball*. Motel information is published on the page 6.

A tentative event schedule is included on the next page. Note that sites for the Dutch Treat Dinner on Wednesday night and the Continental Breakfast on Friday morning have not been determined. I expect to determine these sites during early March and announce them in the April issue.

See you in June

Additional Notes of Importance

**We've been having some difficulties with our website over the last few months. We thank the membership for their patience and we promise to have the site updated and moving forward very quickly. If anyone has sent feedback to the site and has not received a response and your questions remain, could you please direct them the old snail mail way to our club post office box. Thanks!

**The following are additional DG clubs that were not recognized in the last *Crystal Ball*:

National Duncan Glass Society, Chapter One
Heisey Club of California
Arkansas Glasshoppers
Big D Depression Glass Club

We thank them also for their help and support.

Make Plans Now



1999 Calendar Planning

Mark your calendars now with these important events during the coming year:

March 5

March Quarterly Meeting
Pritchard Laughlin Civic Center
Cambridge, Ohio

March 6

All Cambridge Glass Auction
Pritchard Laughlin Civic Center

June 24-27

1999 National Cambridge Collectors' Convention
Pritchard Laughlin Civic Center

June 25-27

NCC Glass Show and Sale
Pritchard Laughlin Civic Center

June 26

"Glass Dash" ("flea" market)
Beech Grove Family Development Center
Cambridge, Ohio

June 27

NCC Annual Meeting
Pritchard Laughlin Civic Center

August 28

August Quarterly Meeting and Work Session
To Be Announced
Cambridge, Ohio

November 6

November Quarterly Meeting and
Education Program
Cambridge Country Club (tentative)

NATIONAL CAMBRIDGE COLLECTORS, INC.
26th ANNUAL CONVENTION - JUNE 1999
TENTATIVE EVENT SCHEDULE

WEDNESDAY, JUNE 23

6:00 p.m. Dutch Treat Dinner Site TBD

THURSDAY, JUNE 24

9:00 a.m. Registration Desk Opens Pritchard Laughlin Civic Center
 10:00 a.m. Smith Auction (Not sponsored by NCC) Pritchard Laughlin Civic Center Galleria
 4:00 p.m. Orientation Session - First Timers Conference Room - Pritchard Laughlin Civic Center
 7:00 p.m. Get Acquainted Picnic (full picnic meal served) Cash Bar Pool Side - Best Western Motel

FRIDAY, JUNE 25

8:00 a.m. Continental Breakfast Site TBD
 9:00 a.m. Local Glass Factory Tours Boyd and Mosser Factories
 9:00 a.m. Registration Desk Opens Pritchard Laughlin Civic Center
 1:00 p.m. Program - "It's A Small, Small World" Conference Room - Pritchard Laughlin Civic Center
 4:30 p.m. Glass Show Opens Exhibit Hall - Pritchard Laughlin Civic Center
 7:30 p.m. Convention Chairman's Reception - Cash Bar Galleria - Pritchard Laughlin Civic Center
 8:00 p.m. Friday Night Supper Galleria - Pritchard Laughlin Civic Center
 9:00 p.m. Mini-Auction Galleria - Pritchard Laughlin Civic Center
 TF Pool Side Party (BYOB) Deer Creek Motel

SATURDAY, JUNE 26

7:00 a.m. Glass Dash Opens Beech Grove Family Development Center
 11:00 a.m. Glass Show Opens Exhibit Hall - Pritchard Laughlin Civic Center
 3:00 p.m. Glass Identification - Lynn Welker Conference Room - Pritchard Laughlin Civic Center
 4:00 p.m. Bring & Brag - Lynn Welker Conference Room - Pritchard Laughlin Civic Center
 6:30 p.m. President's Reception - Cash Bar Galleria - Pritchard Laughlin Civic Center
 7:00 p.m. Annual Banquet Galleria - Pritchard Laughlin Civic Center
 TF Pool Side Party (BYOB) Deer Creek Motel

SUNDAY, JUNE 27

8:30 a.m. Buffet Breakfast Galleria - Pritchard Laughlin Civic Center
 9:30 a.m. 26th Annual NCC, Inc. Meeting Galleria - Pritchard Laughlin Civic Center
 11:00 a.m. Glass Show Opens Exhibit Hall - Pritchard Laughlin Civic Center
 1:30 p.m. Cambridge Glass Co. Workers Reunion Pritchard Laughlin Civic Center

1999 NCC CONVENTION MOTEL INFORMATION

The following motels are all located in Cambridge at Exit 178, Ohio Route 209, off of Interstate 70.

BEST WESTERN CAMBRIDGE

1945 Southgate Parkway
740-439-3581
No extra for children
One week cancellation notice
Approximately 50 rooms available
\$55 single or double

DEER CREEK MOTEL

2325 Southgate Parkway
740-432-6391
Reservations 800-637-2917
24 hours cancellation notice
Approximately 50 rooms available
\$45.95 single / \$52.95 double

TRAVELODGE OF CAMBRIDGE

State Route 209 North
740-432-7375
One week cancellation notice
Approximately 15 rooms available
\$55 double 1 bed / \$59 double 2 beds

AMERIHOST CAMBRIDGE

State Route 209 South
740-439-1505
Reservations 800-434-5800
\$62 single or double (includes continental breakfast)

HOLIDAY INN CAMBRIDGE

2248 Southgate Parkway
740-432-7313
One week cancellation notice
Approximately 20 rooms available
\$65 (includes breakfast)

DAYS INN CAMBRIDGE

2328 Southgate Parkway
740-432-5691
\$69 (subject to availability)

BOGART'S BED & BREAKFAST

62 West Main Street
New Concord, OH
740-872-3514 / 740-826-7439
Call for rates

To obtain the quoted rate at any of the motels, you must specify you are attending the NCC, Inc. Convention. (Most places recognize "Cambridge Glass Convention" more than they do "NCC.") It is strongly recommended that NCC members and friends attending the 1999 Convention book their reservations as soon as possible. In every instance there are only a certain number of rooms available at the stated group rate. When these are booked, you may have to pay a higher rate.

*Plan now to attend NCC Convention 1999
Make your reservations early!*

CARNIVAL TREASURES

BY RUTH EAVES

The photo shown is the "Near Cut" decanter made by the Cambridge Glass Company in Cambridge, Ohio between 1910 and 1920. It is dark green with gold, blue, and red highlights in the iridescence. The decanter stands 12 inches tall and is quite heavy. It is the perfect one of the two known. This piece is another treasure from the Woody and Marlene Funk collection. They purchased the piece at the Ed Garner Auction in 1983.

I must say thank you to Bud and Anna Walker, Cambridge Glass collectors from South Jersey, for providing me with information on the Cambridge decanters. They shared a reprinted catalog called "Near Cut" from 1910. In the book there was a page from design #2666. This decanter was shown on that page. The design was not given a name. No color was mentioned in the catalog. The Cambridge Company used the words "near cut" for many designs they created—including Wheat Sheaf. When carnival collectors say "near cut decanter" we probably think of this piece. A Cambridge collector would need us to be more specific as many near cut designs can be seen in the 1910 catalog.

I was interested to learn the Cambridge Company was the second company to iridize glass. Fenton was the first, then Cambridge and Northwood, only months after Fenton. The unanswered question is, why did Cambridge iridize so little? We know this decanter and the Wheat Sheaf, and then the Buzz Saw cruets and a cologne in the near cut designs were made with iridescence. The Inverted Strawberry and Inverted Feather were two other patterns iridized. After seeing other examples of glass by Cambridge, my guess is that since the company chose to do so many other varied treatments of glass, iridizing wasn't that important. They evidently did not meet with the financial success Fenton and Northwood did with iridescence.

This decanter was also made using the cut shut mould I described in my last article.

(See previous related article in the December 1998 issue, #308, Page 7)



Blown and Pressed Salts.



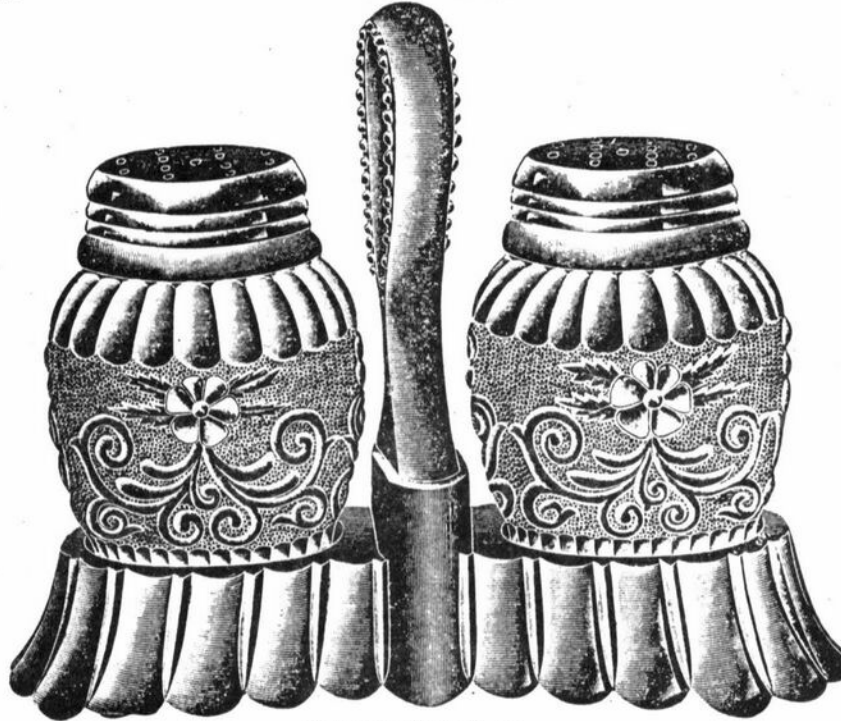
No. 2606 Salt and Pepper, Pressed.
Packed 24 dozen in a barrel.



No. 2607 Salt and Pepper, Pressed.
Packed 24 dozen in a barrel.



No. 2596 Salt and Pepper.
Packed 24 dozen in a barrel.



Queen Two Bottle Caster.
Packed 6 dozen in a barrel.



No. 2594 Salt and Pepper.
Packed 30 dozen in a barrel.

SCALE, FULL SIZE.



Queen Salt and Pepper.
Packed 48 dozen in a barrel.

Little Things

by Mark A. Nye

Through out the years it was in business, the Cambridge Glass Co. produced a number of items that can be classified as "little things." Among these are salt and pepper shakers, often referred to in Cambridge catalogs as "Salts" or "Salts and Peppers." Even the earliest catalogs contained several pages illustrating the various salt and pepper shakers that were available. During those early years, many of these were not of Cambridge design, the molds coming to the new Cambridge factory from other factories in the National Glass Company.

In 1906 Cambridge issued a "Catalogue of Table Glassware, Lamps, Barware and Novelties." (We know it was 1906 since the date was included on the title page, something that was not a standard practice unfortunately.) This was four

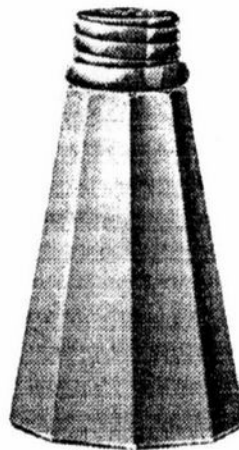
years after the factory began operations and salt shakers were important enough to warrant five pages in this catalog. Three of the pages illustrated the shakers full size and the remaining two, half size; the scale being noted on each page. Many of the shakers seen on these pages were also made by other companies and in these instances, there is no definitive way to determine origin. (In other words, in most instances, I cannot prove that it is Cambridge but at the same time, you can't prove that it isn't.) It is my opinion that those items and lines with a catalog number in the 2600 series were probably of Cambridge design while those in the 2500 series were not.

Color information would have been supplied in the separate price list that accompanied the catalog. According to "Colors in Cambridge Glass," the 1903 Cambridge catalog listed Opal, Turquoise, Blue, and Amber with photographers' supplies listed in Green and Amber while the 1906 price list did not mention Opal and Turquoise. The conclusion was that these latter two colors had been dropped from the Cambridge line by 1906. All of the shakers in the 1906 catalog were produced in Crystal. The Queen shakers are pictured in "Colors in Cambridge Glass" in Opal and Turquoise, probably indicating production before 1906. It is entirely possible other shakers shown in the 1906 catalog were earlier made in these same colors before they were discontinued.

Blown Salts.



No. 2600 Salt and Pepper
Packed 20 dozen in a barrel



No. 2601 Salt and Pepper
Packed 20 dozen in a barrel



No. 2602 Salt and Pepper
Packed 24 dozen in a barrel



No. 2603 Salt and Pepper
Packed 24 dozen in a barrel

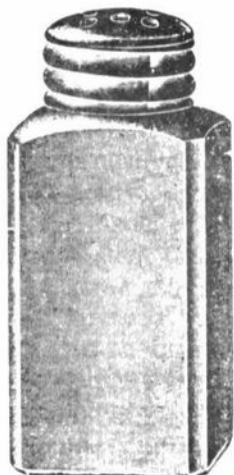


No. 2604 Salt and Pepper
Packed 24 dozen in a barrel

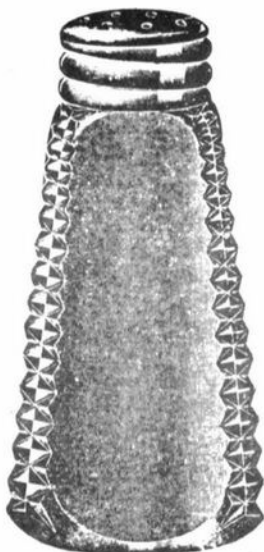
All of the catalog pages printed with this article
(pages 8 - 12) are from the 1906 catalog.

Blown Salts.

SCALE, FULL SIZE.



No. 2595 Salt and Pepper.
Packed 40 dozen in a barrel.



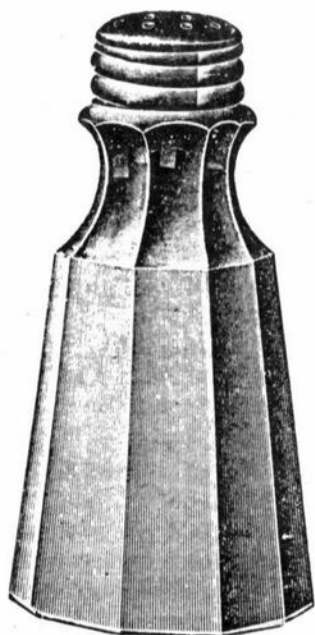
No. 2602 Salt and Pepper.
Packed 30 dozen in a barrel.



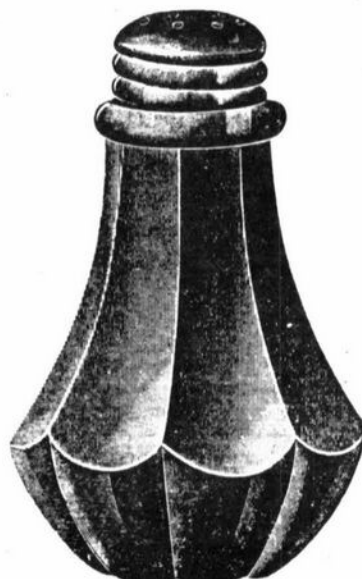
No. 2592 Salt and Pepper.
Packed 24 dozen in a barrel.



No. 2598 Salt and Pepper.
Packed 24 dozen in a barrel.



No. 2599 Salt and Pepper.
Packed 24 dozen in a barrel.



No. 2603 Salt and Pepper.
Packed 24 dozen in a barrel.

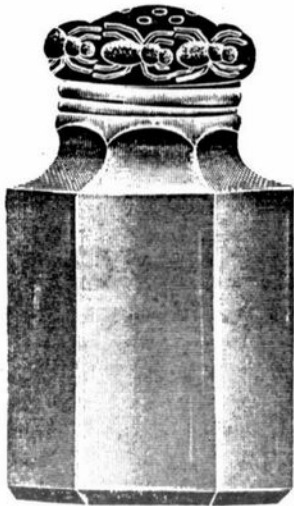


No. 2597 Salt and Pepper.
Packed 24 dozen in a barrel.

Fancy Salts and Peppers.

SCALE, FULL SIZE.

Made Plain Fire Polished
Also Cut and Polished.



No. 1000 Cut Shut Salt.
12 dozen in original package.



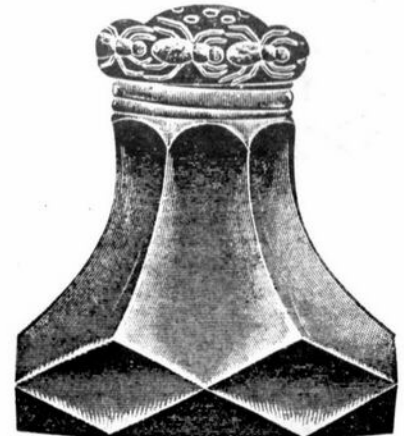
No. 1003 Cut Shut Salt.
12 dozen in original package.



No. 1002 Cut Shut Salt.
12 dozen in original package.



No. 1004 Cut Shut Salt.
12 dozen in original package.



No. 1005 Cut Shut Salt.
12 dozen in original package.



No. 1006 Cut Shut Salt.
12 dozen in original package.



No. 1007 Cut Shut Salt.
12 dozen in original package.



No. 1008 Cut Shut Salt,
12 dozen in original package.

Blown and Pressed Salts.

SCALE, HALF SIZE.



No. 1802 Salt and Pepper.
Packed 30 dozen in a barrel.



No. 1803 Salt and Pepper.
Packed 30 dozen in a barrel.



No. 1801 Salt and Pepper.
Packed 30 dozen in a barrel.



No. 2506 Salt and Pepper.
Packed 32 dozen in a barrel.



No. 1805 Salt and Pepper.
Packed 24 dozen in a barrel.



Empress 2 Bottle Caster.
Packed 6 dozen in a barrel.



No. 1807 Salt and Pepper.
Packed 24 dozen in a barrel.



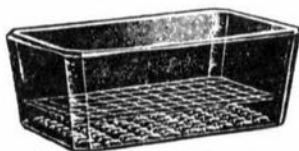
No. 1800 Salt and Pepper.
Packed 24 dozen in a barrel.



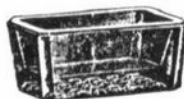
No. 2580 Saloon Salt and Pepper.
Packed 20 dozen in a barrel.



No. 1804 Salt and Pepper.
Packed 20 dozen in a barrel.



No. 2613 Square Table Salt.
Packed 60 dozen in a barrel.



No. 2614 Square Individual Salt.
Packed 120 dozen in a barrel.



No. 2615 Oval Table Salt.
Packed 30 dozen in a barrel.



Heart Addendum

by Georgia G. Otten

This addendum to the "Have a Heart" article (February 1999, Page 15) illustrates a point that we already know. No matter how many times a person (myself in this case) looks in the Cambridge books, that person can never see everything. You have to go back again and again. Even then, something may be overlooked.

I had finished writing the "Heart" article, or at least thought so, and I was looking for a new idea to write about from somewhere in the Cambridge books. That is when I came across the first of my three oversights pertaining to hearts.

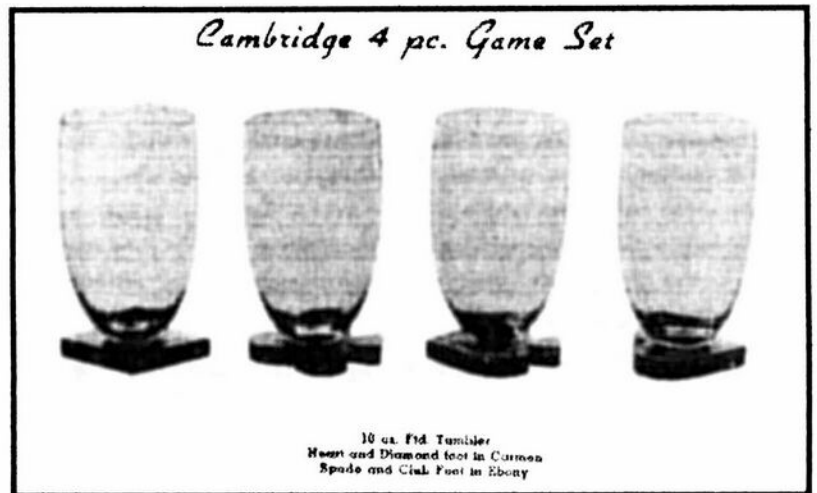
First to the Caprice people, I apologize for not letting everyone know you have a HEART! It is the lovely #169 6" HEART! Second apology goes to the Nearcut #2631 Marjorie people. You have not one, but two hearts for your collection! There is the Card Tray "Hearts" and the Handled Olive, "Heart" Shape! And one more item I found. For whomever, an apology for not mentioning the Cambridge four-piece game set. One of the tumblers has a HEART foot!

I wonder ... are there any more Cambridge Hearts? If you have one, let the *Crystal Ball* hear from you, 'cause we all need to HAVE A HEART!



169 - 6 in. Heart

← Caprice - p. 78
Welker Book I



Cambridge 4 pc. Game Set

10 oz. Fld. Tumbler
Heart and Diamond feet in Cutman
Spade and Club Foot in Ebony

4 pc. Game Set - p. 12
Welker Book I



Card Tray, "Hearts"

← Marjorie #2631 - p. 99
Welker Book II

NATIONAL STUDY GROUP REPORTS

Study Group #14 The Cambridge Cordials

The Cambridge Cordials met on December 19, 1998 at the home of Mary Welker for the annual Christmas meeting and gift exchange. Present at the meeting were: Sharon Miller, Kathy Chester, Shirley and Carl Beynon, Lisa and Mike Neilson, Rich Bennett, Mary Welker, Mike Arent, Judy Momirov, J.D. Hanes, Lorraine Weinman, and Lynn Welker

After a brief business meeting with a report from Lynn regarding the T-shirt fundraiser's progress and future plans, all members thoroughly enjoyed a wonderful feast prepared by Mary and Lynn. It was a perfect Christmas gathering!

There were many pieces of glass to discuss between Show and Tell and the gift exchange items. Cambridge glass makes the ideal Christmas gift as all will attest.

Lynn finished out the evening by discussing and showing examples of Antique Art Glass. How enjoyable and fun that was! Everyone agreed that it had been a great evening.

Study Group #16 Elegant Glass Collectors

On February 6, 1999, the Elegant Glass Collectors met at the Wheaton Village Museum of American Glass Mid-Winter Antiques Show. Those present were John Corl, Anna and Bud Walker, Steve Taylor, Amy Weinstein, Sharon Renz, and Pam Earussi. John Corl's aunt, Barbara, Dean and Cathy Stolberg, and Shirley Salanon were guests who also present.

We attended the Mid-Winter Antiques Show, seeing the beautiful cases of museum display in the background of the show tables. We then toured the shops at Wheaton Village. Seen were items made from Cambridge molds by Fenton and Mosser. One beautiful item was a Carmen piece, which they called Ruby, in a Nearcut design. It was a large, flat serving plate. Also seen were a clear pink Inverted Strawberry milk pitcher, children's punch bowl w/cups, Cobalt covered butter, and Crystal and Cobalt 3-inch swans. The glass appeared to be of a fine quality, not greasy to the touch. Of course, it is not the glass manufactured by the Cambridge Factory that we collect, but still beautiful in its own way. One way to recognize other manufactured glass is that it is made in

colors not made by the Cambridge Company.

Plans are under way for the Spring Show in Harrisburg. The American Pattern Glass Society is interested in our Nearcut, and have asked that someone speak on toy articles. Show and Tell was held in the restaurant and mall.

We wish to thank our study group members Bill and Lesley Connor for their idea to produce the Scotty Bookends as a fundraiser to help for the Museum loss. Their tireless work, along with the Cambridge members, Bud Walker, Bill Hagerty, and anyone else who helped bring this project into reality - our Cambridge Hats are off to you!

Our next meeting will be in late March, and then in Harrisburg April 23-25. All Cambridge members are invited to come visit and/or help. Hope to see you there!

— submitted by Pam Earussi

WE CLEAN CLOUDY GLASS! **SATISFACTION GUARANTEED**

Yes, it is true that we really can restore the interior of your cruet, vase, decanter and other internally etched items back to near original condition.

We do not oil, wax or cover up the sickness in any way! We actually remove it.

No items are too sick to clean! If we cannot clean an item to meet your satisfaction, the cleaning is FREE!

Send no money up front! When we return your item a bill will be enclosed for the postage and cleaning. If you are not satisfied, only the return postage is requested.

Most items clean in 7-8 weeks. All glass is handled and cleaned at your risk. Some very cloudy items may take several additional weeks.

Cocktail Shaker	\$35.00	Salt Shaker (1)	\$25.00
Cologne	\$27.50	Salt Shaker (2)	\$42.50
Cruet	\$27.50	Vases (under 10")	\$30-\$35.00
Decanter	\$35-\$45.00	Vinegar & Oil	\$30.00
Lavendar Jar	\$25-\$35.00	Water Bottle	\$30-\$40.00

Ship to: Kim Carlisle & Associates
28220 Lamong Road, Dept. C
Sheridan, IN 46069
(317) 758-5767

kcarlisl@indy.net

1999

IN MEMORIAM

Word has come to us of the passing of the following NCC members. We wish to express our sympathy to their friends and families.

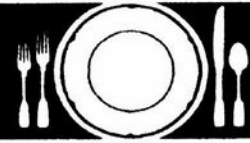
Jack Fisher, Member #4900, passed away the latter part of 1997. His wife is Alyne G. Fisher, Member #4336, of Austin, TX.

D.D. Rummel, Member #336, passed away March 17, 1998. His wife is Virginia Rummel, Member #513, of Bellville, Ohio.

Phyllis T. Freier, Member #500, passed away. Her husband is Harry L. Freier, Member #501, of Sewickley, PA.

Betty J. Davies, Member #6121, passed away on January 3, 1999.

May it comfort you to know that others do care and share in your loss.



Stems Without Thorns

As the world's largest supplier of discontinued and active china, crystal, flatware and collectibles, Replacements, Ltd. has over 325 different patterns of Cambridge crystal.

And however much we enjoy selling pieces which were once thought irreplaceable, we love buying them as well. Thanks to people like you, our crystal inventory currently numbers in the hundreds of thousands, and the numbers keep growing every year.

So, if you've been unsuccessfully searching for that elusive piece of Cambridge - or any other type of fine crystal - call us for a free list of pieces available in your pattern. And, if you're looking to sell pieces you currently have, we can help you there, too.

REPLACEMENTS, LTD.

China, Crystal & Flatware • Discontinued & Active

1-800-REPLACE
(1-800-737-5223)

1089 Knox Road.
PO Box 26029, Dept. CB,
Greensboro, NC 27420

Cambridge by the Numbers

by Georgia G. Otten

We already know that Cambridge collectors are unique ... each liking different colors, different etches, different patterns. The common denominator is the Cambridge Language and how we use it to discuss our glass. But not all of us speak "fluent Cambridge"... Lynn Welker speaks fluent Cambridge ... and we all try. Within the execution of this language, there is a special group of collectors who know and speak the NUMBERS !! It took me what seemed like forever to remember and say with authority, "I collect 3121 etched Rose Point." What a milestone! My knowledge of numbers is still very limited. But I would like to salute those who know numbers by telling a story just for them.

Once upon a time two 3795s met at a quaint 1003. They sat together on the 1018 which was surrounded by 1067 and 1059. In the 3790 of this setting the 1029 picked up quickly when they heard the 7966. It was time to go to the 1953. Waiting was the maid of honor to help with the 5000 gown and the 4000 of 1069 surrounding the beautiful 998. After the service, a lovely 7967 played and everyone joined hands and made a large 3796. The ceremony was truly a 1061 and was done by the numbers.

If you find you are "numerically challenged" within your Cambridge language, the index of the 49-53 catalog reprint can help with the translation of the story. And remember, no matter what language is used, learning about Cambridge glass is so much fun. No one knows it all. So get those books, get your Cambridge-speaking friends together and go look up **Cambridge by the Numbers**.
(Answers in April *Crystal Ball*)



Don't Miss Your Chance

~ *Limited Time Offer* ~

Order **NOW**

WON'T YOU HELP?

The Ohio flood of 1998 destroyed the National Cambridge Collectors' Museum. Due to our great loss we are offering the public an opportunity to help us by purchasing a special edition of Scottie Dog bookends. These Scotties will be made from the original Cambridge Glass mold in a "Moonlight" blue color, and will be clearly marked with the N.C.C. name, date and Mosser logo. The cost will be \$100 per set. A \$25 dollar deposit will be required for each set ordered. Total cost including shipping, will be \$110 for each set ordered. All moneys raised will go toward a new Cambridge Glass Museum.

Thank you!

(Order blank)

Name: (please print) _____

Address: _____

City: _____ State: _____ Zip Code _____ - _____

No. of pairs: _____ X \$25.00 = \$ _____ Deposit - Check # _____

Will pick up at the Convention in June 1999 # of sets: _____ Ship # sets: _____

Make checks payable to N.C.C., Inc.

**Mail to: National Cambridge Collectors, Inc.
P. O. Box 416
Cambridge, OH 43725-0416**

Shipping charge is \$10 per set, unless picked up at the N.C.C. Convention in June 1999. If you pick up at the 1999 Convention, or are an Ohio resident, you will be subject to 6 1/2% sales tax (\$6.50 per set). Shipping charges will be paid with balance of order before being shipped. You will be notified of your balance due, including shipping charges and tax, (if applicable), when your order is ready to be shipped. Your canceled check will be your receipt. We will not mail out deposit confirmations.

CAMBRIDGE GLASS BOOKS FOR SALE

By National Cambridge Collectors, Inc.

Colors in Cambridge Glass

- 128 pages, 60 color plates, full index. Hardbound w/valueguide 19.95
- 1910 Nearcut**
108-page reprint of original 1910 catalog. PB w/valueguide 14.95
- 1930-1934 Cambridge Glass Co. Catalog Reprint**
250-page reprint of original catalog. PB w/value guide 14.95
- 1949-1953 Cambridge Glass Co. Catalog Reprint**
300-page B&W reprint of original catalog. B&W paperback
with value guide 14.95
- 1940's Cambridge Glass Co. Catalog Reprint**
250-page reprint of original catalog and all well known supplemental
pages. Drilled, ready for placement in your own three-ring binder.
Due to its size, the reprint **does not include a value guide**. B&W 34.95
- Cambridge Rose Point** by Mark Nye
94-page book listing of Rose Point from several sources: catalogs,
trade journals, price lists, etching plates, and other surviving company
records. One of the most popular lines of The Cambridge Glass
Company, showing the many blanks on which Rose Point might be
found along with the history and production life of the line. B&W
paperback with value guide 14.95
- Etchings by Cambridge, Vol. 1** By the Miami Valley Study Group
84-page book showing samples of plate etchings applied by The
Cambridge Glass Company. B&W paperback. Due to the style of
publication this book **does not have a value guide** 14.95
- The Home of "Near-Cut" Factory Post Card**
B&W picture of The Cambridge Glass Company post card 50
- Crystal Lady Video**
Approximate 25 minute video copy of old Cambridge Glass Co. film
showing the making of a goblet in the Cambridge factory 15.00
- Rose Point Value Guide** (Included with Rose Point Book purchase)
Value guide only, includes postage 5.00
- N. C. C. Members can purchase the above publications at a 10%
discount**

Other books on Cambridge Glass

- Cambridge Glass 1927-1929** by Bill and Phyllis Smith
66-page reprint of original catalog. B&W paperback
with updated value guide 7.95
- Cambridge Stemware** by Mark A. Nye
167 page book showing as many known Cambridge stems known at
the time of publication. B&W paperback. **No value guide** 19.95
- Cambridge Glass Company** by Mary, Lyle and Lynn Welker
120 pages of reprints from eight old catalogs. B&W paperback.
No value guide 10.00
- Cambridge, Ohio Glass in Color II** by Mary, Lyle and Lynn Welker
15 Color plates showing choice pieces from their collection.
Spiralbound. **No value guide** 5.95
- Cambridge Glass Company 1903** by Harold & Judy Bennett
106-page reprint of original catalog. B&W paperback **N/value guide** 5.00
- Reflections** by the Degenhart Paperweight & Glass Museum
45-page book giving a history of all 18 glass companies in Guernsey
County. B&W paperback with pictures 5.00 including postage

address orders to:

Books, National Cambridge Collectors, Inc.
P. O. Box 416
Cambridge, OH 43725-0416

Please add postage and handling to your order (**first book, \$3.00; each
additional book \$1.00**). Ohio residents add 6 1/2% state sales tax.
Only check or money order. NO CASH, NO CHARGE CARDS.
Dealer Discounts Available. Please Write!

OTHER ITEMS FOR SALE FROM THE NATIONAL CAMBRIDGE COLLECTORS GLASS MUSEUM

Brochures:

Cambridge Arms.....	1.00
Cambridge Square.....	.25
Chantilly.....	.25
Laurel Wreath.....	.10
Lynbrook.....	.10
Martha.....	.25
Regency.....	.25
Rondo.....	.10
Roxbury.....	.10
Star.....	.10

Please include SASE for above brochures

Cup Plates showing Cambridge Pencil dog motif in bottom. Made by
Pairpoint in Crystal ea 2.00
Please include \$3.00 shipping & handling on each order

The following Convention Favors are marked with the N.C.C. name & yr.

Convention favors

1984 Pink, 2 1/2 oz. Georgian Tumbler.....	2.00
1985 Amber, 2 1/2 oz. Georgian Tumbler.....	2.00
1986 Yellow, 2 1/2 oz. Georgian Tumbler.....	2.00
1988 Cobalt, Cambridge Square Cigarette Holder.....	2.00
1989 Teal Green, Mt. Vernon Cordial.....	2.00
1990 Pink, Mt. Vernon Cordial.....	2.00
1991 Cobalt Blue, Mt. Vernon Cordial.....	2.00
1994 Crystal Iridized, Cascade Goblet.....	5.00
1995 Cranberry Ice, Cascade Goblet.....	5.00
1996 Carnival, Cascade Goblet.....	5.00
1997 Green, Opal Edge, Cascade Goblet.....	5.00
1998 Yellow Iridized, Cascade Goblet.....	5.00
Eagle book end, Fund raiser, Cobalt blue..(only one single left).....	30.00
Prism with "Cambridge" on one side. Fund raiser, Mint Julep.....	15.00

Please include \$3.00 shipping & handling on each order of 5 items

Books by Gene Florence

Hardbound color with value guides

Elegant Glassware of the Depression Era (Eighth Edition).....19.95
Shipping is \$3.00 for first book and \$1.00 for each additional book

Salt & Pepper tops. Polycarbon plastic, will fit most regular sized
Cambridge shakers such as Rose Point ftd and flat bottomed shakers.
Also fit Heisey Rose, Saturn, Plantation, Crystalite and some Orchid. Fit
some Anchor Hocking and Candlewick. made from the same material
used to make taillight lenses for autos.

Price: 1 to 9 pairs @ \$6 per pair - 10 or more pairs @ \$5 per pair
Shipping & Handling is \$3.00 per order on S&P tops

Send all orders to:

National Cambridge Collectors, Inc.
P. O. Box 416
Cambridge, Ohio 43725-0416

~ GLASS ~ MARKETPLACE

Classifieds

WANTED: CAMBRIDGE SWANS, all types, sizes, and colors including Cambridge swan punch cups. **Contact:** Dale Nash, 1940 Barber Drive, Stoughton, WI 53589. Phone 608-873-9294.

WANTED: "Any piece of Cambridge Etch 520, in pink." Please e-mail at dhmjh@ibm.net or phone (714) 538-6656. Thanks. Mary Jane.

WANTED: Rare or unusual pieces of Cambridge Glass, Rose Point, 3106 Rose Point stems, Marjorie etched items, decorated opaques, Cambridge Art Pottery, nude stems, swans, and novelty items. **Contact Jim & Nancy Finley, 711 W Broadway, Sedalia, MO 65301, (660) 826-5032 or e-mail: nFinley@iland.net.**

WANTED: Cambridge Rosepoint Hi-Sherbet 6 3/8" tall. **Contact Mary Jo Czaplewski, 1330 Sunview Drive, Shoreview, MN 55126. 651-783-0657 or e-mail CzaplewskiMJ@Juno.com.**

WANTED: Pink Cambridge Etching #703, Florentine. Interested in any pieces. **Linda Kaiser, 158 Pointe Vintage Drive, Rochester, NY 14626-1759, e-mail VFKaiser@aol.com, 716-227-2991.**

(CONTINUED NEXT COLUMN)

Bogart's Bed & Breakfast

62 W. Main Street, New Concord
New Concord lodging in 1830 Federal
Style home, decorated with
antiques throughout.



Bogart's Antiques

7527 E. Pike, Norwich OH
Quality Antiques Bought & Sold

OWNERS: Jack & Sharon Bogart
872-3514 or 826-7439

The DAZE Inc.

SPECIAL OFFER
to MCC friends
\$2.00 OFF
the 1 year subscription price
when on this form or copy of it.

The Original National monthly newspaper dedicated to the buying, selling and collecting of American made glassware china, and pottery from this century. We educate and inform you each month with feature articles by top notch writers, readers letters, club happenings, reproduction news, show reports and there are hundreds of dealers to help you fill in the missing pieces of your collection. "Keep up with what's happening" . . . Subscribe today!

Name _____
Street _____
City _____
State _____ Zip _____
 1 year \$21.00 2 years \$40.00 \$2.00 Single Copy
Subscription Hot Line: 1-800-336-9927
Exp. Date _____ Card No. _____
Signature _____

Orders to:

The Daze, Inc., Box 57, Otisville, MI 48463

Please allow 30 days for your first issue - Canadian Subscribers, add \$1.00 per year and subscribe by charge card only! This Special Offer may not be combined with any other special offer.

Offer Expires December 31, 1998

FOR SALE: Swans (Porcelain collector bought small estate which also contained the following): Ebony 6 1/2" Type I, 4 1/2" Type I, 3" Type I, 3" Type II - Emerald 4 1/2" Type I - Gold Krystal 3" Type II. All mint, all marked. Sell all six for \$415. **Mark Stuart (573) 886-8774 or 731-A Demaret, Columbia, MO 65202.**

FOR SALE: Six 301 Crystal Cambridge Caprice Cocktails - \$22.00 each. Four 301 Crystal Cambridge Caprice Sherbets - \$20.00 each. **E-mail mjhumes@aol.com or call 217-422-5453.**

FOR SALE: Cambridge Rose Point Stemware #3121, 4 1/2 oz. Claret \$125, 4 1/2 oz. Oyster Cocktail \$50, six 1 oz. Cordials \$85 each, five 3 oz. Cocktails \$50 each; Relishes, #3400-67 \$100, #3400-91 \$85; Vase #6004 w/paper label \$175; six Shrimp Cocktail Icers, #968 \$110 each; Sugar/Creamer #3900-41 \$75; Dinner Bell #3121 \$140; Plates, four #3500-5 \$25 each, 10 #3400-62 \$35 each. **Pat Geiger, 1311 Stratford Avenue, South Pasadena, CA 91030. 626-799-1456.** UPS Insurance Extra.

ADVERTISE HERE NOW !

You never know who you are missing.

DEALERS



DIRECTORY

NOTE: When writing to the dealers listed here, please enclose a SASE!

<p>DAUGHERTY'S ANTIQUES Jerry and Shirley</p> <p>Antiques and Collectibles * Mostly Glass</p> <p>Shows & Mail Orders 2515 Cheshire No. 402-423-7426 Evenings Lincoln NE 68512</p>	<p>"HAPPINESS IS" Buddy and Kathy Stultz</p> <p>3106 Warren Court, Glen Allen, VA 23060 804-672-8102</p> <p>Specializing in American Made Glass We Buy & Sell, Shows & Mail Order</p>	<p>THE JONES GROUP Cindy Jones</p> <p>Buy and Sell Cambridge Glass 650 Riverside Drive Sleepy Hollow, NY 10591 914-631-1656 or E-Mail Caprice0@aol.com</p>
<p>Milbra's Crystal Buy & Sell Replacement and Matching Specializing in: Cambridge Milbra Long (817) 645-6066 Fostoria Emily Seate (817) 294-9837 Heisey PO Box 784, Cleburne, TX 76033 and others E-mail: longseat@flash.net</p>	<p>YOU CAN ADVERTISE YOUR ANTIQUe SHOP HERE!</p>	<p>MARY JANE'S ANTIQUES Mary Jane Humes</p> <p>2653 Burgener Dr., Decatur, IL 62521 Depression Era Items Cambridge and Other Elegant Glass mjhumes@aol.com 217 422-5453</p>
<p>THE GLASS URN 456 West Main Street, Suite G Mesa, AZ 85201 602-833-2702</p> <p>Mail Order Shows Open Shop</p> <p>CAMBRIDGE, FOSTORIA, HEISEY, ETC.</p>	<p>YOU CAN ADVERTISE YOUR ANTIQUe SHOP HERE!</p>	<p>GATEWAY ANTIQUE MALL, INC. JUST NW OF MINNEAPOLIS-ST. PAUL, MN Next to Super 8 in Rogers, MN (I-94/101 Intersection)</p> <p>85 Dealers 7 Days, 10-6 612-428-8286 ELAINE STORCK, OWNER/DIRECTOR</p>
<p>THE DEGENHART PAPERWEIGHT AND GLASS MUSEUM, INC.</p> <p>P.O. Box 186 Cambridge, Ohio 43725-0186 Intersection of US 22 & I 77 Phone 740-432-2626</p>	<p>D & D ANTIQUES</p> <p>Columbus, Ohio</p> <p>Dick Slifko SHOWS ONLY</p>	<p>JAMESTOWN ANTIQUES 16 E. Washington St., Jamestown, OH 45335</p> <p>Rosepoint and Cambridge our Specialty Shows and Shop (chance or appt.)</p> <p>Buy (937) 675-6491 Sell Susan and Larry Everett</p>
<p>THE GLASS CUPBOARD</p> <p>P.O. Box 652 West End, North Carolina 27376</p> <p>Marcia Ellis Cambridge, Heisey 910-673-2884 Shows, Mail Order</p>	<p>JUDY'S ANTIQUES Judy Bennett</p> <p>422 S. Ninth Street (Corner of Jefferson) Cambridge, Ohio 43725 Bus. 740-432-5855 Res. 740-432-3045</p> <p>CAMBRIDGE GLASS MY SPECIALTY</p>	<p>Horse'n Around Antiques Kelvin and Heather Moore</p> <p>Exit 69 on Interstate 64 Woodlawn, IL 62898 e-mail: hmoore@midwest.net TEL: 618-735-9114</p> <p>Specializing in Cambridge and other Elegant Glass</p>
<p>FINDER'S ANTIQUE HOUSE</p> <p>3769 Highway 29 North Danville, VA 24540 (804) 836-6782 Cambridge-Heisey-Duncan-Fostoria</p>	<p>GREEN ACRES FARM</p> <p>2678 Hazelton Etna Rd., Pataskala, OH 43062 (State Route 310 North)</p> <p>Sat & Sun 1-7 PM 740-927-1882 Antiques, Crystal Glass and Collectibles</p>	<p>CRYSTAL LADY</p> <p>1817 Vinton St., Omaha, NE 68108</p> <p>Bill, Joann, and Marcie Hagerty</p> <p>Bus. 402-341-0643 Res. 402-391-6730 Specializing in Elegant Glass & Collectibles</p>
<p>YOU CAN ADVERTISE YOUR ANTIQUe SHOP HERE!</p>	<p>YOU CAN ADVERTISE YOUR ANTIQUe SHOP HERE!</p>	<p>PENNY COURT MALL 637 Wheeling Avenue Cambridge, Ohio</p> <p>100 Booths 15,000 sq. ft. HOURS: Daily 10-6 Sunday Noon-5 Closed: Easter, Thanksgiving, Christmas Call for Other Holiday Hours 740-432-4369</p>
<p>MICHAEL KRUMME Cambridge and other elegant glassware</p> <p>(213) 874-GLASS e-mail: mkrumme@pacbell.net website: http://www.glassshow.com PO Box 48225 Los Angeles CA 90048-0225 Send your want list</p>	<p>Warren and Mary Welsh Cambridge & Other Elegant Glassware</p> <p>3635 Saddle Rock Rd., Colorado Springs, CO 80918 (719) 531-5866 WELS@EARTHLINK.NET</p> <p>MAIL ORDER SHOWS</p>	<p>MARGARET LANE ANTIQUES</p> <p>2 E. Main St., New Concord, OH 43762 Lynn Welker 740-826-7414</p> <p>Cambridge Glass Matching Service Hours Mon-Fri 10-12 AM, 1-5 PM or by Appointment</p>
<p>ISAACS ANTIQUES (740) 826-4015</p> <p>See our booths in Penny Court Mall in Cambridge and White Pillars Antique Mall at Rt. 40, one mile west of I-70 Norwich Exit #164</p>	<p>ALADDIN LAMP BOOKS Free List</p> <p>Figurine Lamps Wanted Bill & Treva Courter</p> <p>3935 Kelley Rd. Kevill, KY 42053 Phone/FAX 502-488-2116</p>	<p>DEXTER CITY ANTIQUE MALL</p> <p>P. O. Box 70, Dexter City, Ohio 45727 (740) 783-5921</p> <p>Located on Ohio St. Rt. 821 Between Exits 16 & 25 off I-77 Just 30 min. South of Cambridge, Ohio</p>

AUCTION

All Cambridge Glass and Related Items

from the Private Collection of

Phyllis and (the late) Bill Smith

Thursday, June 24 - 10:00 a.m.

Doors Will Open at 9:00 a.m.

Pritchard Laughlin Civic Center — In the Galleria
Glenn Highway (US 40 W at I-70) Cambridge, OH

FOOD WILL BE AVAILABLE

Auctioneer: Craig Connelly

Owner: Phyllis Smith

Auction Catalogs will be available - Send large 33-cent SASE
Phyllis D. Smith, 4003 Old Columbus Road, Springfield, OH 45502-8802
Phone: (937) 323-3888

National Cambridge Collectors Inc
PO Box 416
Cambridge OH 43725-0416
<http://www.cambridgeglass.org>
e-mail: NCC_Crystal_Ball@compuserve.com

FIRST CLASS MAIL
U.S. POSTAGE
PAID
PERMIT NO. 1
CAMBRIDGE, OH

FIRST CLASS MAIL

Membership Renewal Notice

**If the date on your address label is 3-99,
this is your LAST ISSUE of the Crystal Ball.**
Please take a moment and renew now. Thank you!