



Cambridge Crystal Ball

Published monthly by National Cambridge Collectors, Inc.
to encourage and report the discovery of the elegant and boundless product of the
Cambridge Glass Company of Cambridge, Ohio

Issue No. 348

April 2002

Moving Toward Museum Opening



Many hours of volunteer time have been going into getting the museum ready to open in April and preparing for the Grand Opening at Convention time. Not only are there full-time work sessions on most weekends, but during the week often finds members at work on one project or another.

Above, Carl Beynon, Cindy Arent, and Shirley Beynon work on tools at the storage building. Some of these may be part of the displays in the new museum.

Inside This Issue:

Reporting from Cambridge
Auction Results
The National Museum of Cambridge Glass
Celebration Update—Convention 2002
Convention REGISTRATION

Cambridge Crystal Ball

Official publication of National Cambridge Collectors Inc., a non-profit corporation with tax exempt status. Published once a month for the benefit of its members. All rights reserved, reproduction in whole or in part without written permission of NCC and the author is prohibited. Membership is available for individual members at \$20.00 per year and an additional \$3.00 for associate members (12 years of age and older, residing in the same household). Of the master member dues, \$14.00 is credited to a one-year subscription to the *Crystal Ball*. All members have voting rights, but only one *Crystal Ball* per household. Multi-year memberships are available: 2 years for \$38.00, 3 years for \$56.00.

2001-2002

OFFICERS AND COMMITTEE CHAIRPERSONS

President	Richard D. Jones
Vice President	Tarzan Deel
Secretary	Ken Filippini
Treasurer	Charles Upton
Sergeant-at-Arms	Michael Neilson
Acquisitions	Lynn Welker
Budget & Finance	Dennis Snyder
By-Laws	Bud Walker
Corresponding Secretary	Charles Upton
Endowment	George Stampler
Facilities	Carl Beynon, Joe Miller
Grants and Fundraising	Sharon Miller
Long-Range Planning	Mike Strebler
Member Services	George Stampler
Membership	Jeff Ross
Museum	Cindy Arent
Nominating	Tarzan Deel
Non-Glass Items	Carl Beynon, Bill Hagerly
Program	David Ray
Projects	Bill Hagerly
Publications	Mark A. Nye
Publicity	Cynthia A. Arent
Study Group Advisor	Ken Filippini
Technology	Linda Roberts
WebMaster	Linda Roberts
2002 Convention	Mark A. Nye
2002 Auction	Squeek and Dorothy Rieker, Lynn Welker
2002 Glass Show	Mary Beth Hackett, Joy McFadden
2002 Glass Dash	Larry and Susan Everett
<i>Crystal Ball</i> Editor	Lorraine Weinman
<i>Crystal Ball</i> Circulation Directors	Sharon and Joe Miller

Internet website: www.cambridgeglass.org

WATCH FOR THE OPENING OF THE NEW NATIONAL CAMBRIDGE COLLECTORS MUSEUM ON SOUTH NINTH STREET IN CAMBRIDGE, OHIO.

THE TEMPORARY NCC MUSEUM IS LOCATED ON WHEELING AVENUE IN PENNY COURT MALL IN DOWNTOWN CAMBRIDGE, OHIO.

ADVERTISING RATES

(effective November 1, 2001)

Display Rates (camera ready ads preferred)

Unit	Rate
Full Page	\$50.00
3/4 Page	\$40.00
1/2 Page	\$30.00
1/4 Page	\$20.00
1/8 Page	\$15.00

(\$5.00 additional if a photograph is included in display ad)

Classified Rates

10 cents a word \$2.00 minimum

Abbreviations and initials count as words. Type sizes cannot be mixed in classified ads. **Payment in full must accompany all ad copy.** Contact Editor for copy assistance.

Dealer Directory

Six Line Maximum \$24.00 for 12 month contract

Also included - Listing on our Internet site at:

www.cambridgeglass.org

Cambridge *Crystal Ball* assumes no responsibility for items advertised and will not be responsible for errors in price, description, or other information.

Advertising copy, letters, articles, must be received by the 5th of preceding month to be considered for publication in the next issue.

Opinions or information stated in any signed article or letter printed in the *Crystal Ball* are those of the author and may not agree with National Cambridge Collectors, Inc. The Editor reserves the right to refuse and to edit any material submitted for publication to conform to the editorial style of the *Crystal Ball*. Members are encouraged to write to NCC and the *Crystal Ball* sharing their knowledge and questions.

Please address all correspondence (include SASE) to:
(or E-Mail NCC_CrystalBall@yahoo.com)

National Cambridge Collectors, Inc.
P.O. Box 416
Cambridge, OH 43725-0416

President Rick Jones	914-631-1656
Vice President Tarzan Deel	540-869-3949
Secretary Ken Filippini	201-670-0990
Membership	email: jaross@cambridgeoh.com
NCC Museum: Phone	740-432-4245
Fax	740-439-9223

Please notify us immediately of any address change.

**2002
Calendar Planning**

June 26-30, 2002

2002 National Cambridge Collectors Convention
Pritchard Laughlin Civic Center
Cambridge, Ohio

June 28, 2002 (tentative)

NCC Annual Meeting
Pritchard Laughlin Civic Center
Cambridge, Ohio

June 28-29, 2002

NCC Glass Show and Sale
Pritchard Laughlin Civic Center
Cambridge, Ohio

June 29, 2002

"Glass Dash" ("flea" market)
Beech Grove Family Development Center
Cambridge, Ohio

June 29, 2002

Former Workers Reunion
The National Museum of Cambridge Glass
Cambridge, Ohio

August 24, 2002 (tentative)

August Quarterly Meeting
To Be Announced
Cambridge, Ohio

November 2 (tentative)

November Quarterly Meeting
Education Program
To Be Announced
Cambridge, Ohio

MARK YOUR CALENDAR NOW...

Obituary Policy: (Effective November 1, 2001) Obituary notices of ¼ page or less will be printed free. Larger notices will be billed at the standard display ad rate.

President's Message



Reporting from Cambridge!

After every quarterly meeting, there is so much news to share that I feel like more of a "reporter" than a "columnist." Each month I try to use this column to keep our members and friends up-to-date on the goings on of our club and at times provoke or promote great appreciation and preservation of our favorite Cambridge Glass.

A tremendous focus of this organization has been on the recreation of our lasting museum, but we are also accomplishing far more than that. It has really been a joy to see the outstanding initiative and hard work contributed by many members in so many areas.

Living 500 miles away from Cambridge, it is not possible to be there to help the crew that tirelessly works on the Museum every weekend, and for some, every day. As such, I hadn't seen the Museum since the first week of November. Wow! It was amazing to see the progress and appreciate the beauty.

We know we set lofty, but attainable, goals when we set the plan for the new Museum three years ago. However, the evolution of this facility is exceeding even my most wild dreams of what we could achieve. With carpeting installed, three large murals hung, the finishing and cleaning of the showcases, the mock furnace built, the reception furniture installed and the placing of the club-owned glass into showcases, this facility is truly the "first class" one that we aspired to.

There is so much work that goes into this facility that is also somewhat invisible to the average person. One such project has been the re-inventorying of our museum glass – it's been a big job. Charles Upton, Lynn Welker, Cindy Arent, and Mark Nye, among others, have given countless hours to this pursuit. It is very needed and very appreciated.

Speaking of appreciation, over \$100,000 has been raised to help make this museum possible. Much of this has been through large donations like showcase naming and room naming – a process superbly managed by Sharon Miller. Last month, we received the final showcase gift from the Chicago Nudes Study Group plus a naming gift for the outside signage by Dan Kuczewski in loving memory of his wife Pam, who he lost at year's end. Our heartfelt thanks and sympathy go out to Dan and their family.

At this month's meeting, Sharon announced the creation of the Century Club, a program designed for those members who asked for a somewhat smaller way to help

our Museum initiative. You'll be hearing more about this from Sharon, but the part I like best about this program is that it is designed to not only help our museum cause, but to begin to meaningfully build our long-range future through Endowment.

George Stamper led a healthy discussion of how our Endowment Fund is invested and his committee will be making recommendations on a more conservative approach in the future to help preserve these investments through tumultuous economic times like we have been enduring.

Although the Museum has been our club's primary focus, we coincidentally are setting plans for future initiatives to make us even stronger, better managed, and committed to building more benefits of membership. Our long-range plan, crafted under the leadership of Mike Strebler, is helping set a road map to an even stronger future. Mike's been assisted in this planning by Larry Everett, Les Hansen, and Jim Finley. Many ideas are in the pipeline, but a primary focus is on membership development and retention.

Jeff Ross reported some growth in membership from November through March. That's great news. He is being more active in lapsed member mailings and they are paying dividends. We are also building further economic incentives of membership. Our June glass show will have a \$10 admission on Friday, but to members, it is just \$5. Also, a new project that Bill Hagerty will be announcing (Caprice goblets in Mosser's jadite) will have special discounts for NCC members. More programs like this are in the offing.

The Auction went very smoothly and was quite successful. Our thanks to all consignors and bidders plus our Auction set-up team, runners, and clerks who volunteered their time on Friday and Saturday. And, as always, thanks to our Auction Committee of Dorothy and Squeek Rieker and Lynn Welker.

It's wonderful to be part of a growing organization and there may be no better sign than the number and quality of people who agreed to run this year for our Board of Directors. In my time with the club, this has to be the finest slate I've ever seen. It is nationally representative with talented and dedicated people who have given much to the club and seek to do more. What else could we ask for? Until next time, this is your cub reporter saying – Happy Spring!

Rich

2002 Benefit Auction Results - Prices Per Lot

1.	85.00	53.	65.00	105.	30.00	157.	35.00	209.	450.00	261.	210.00
2.	35.00	54.	130.00	106.	85.00	158.	250.00	210.	60.00	262.	85.00
3.	25.00	55.	75.00	107.	90.00	159.	40.00	211.	35.00	263.	80.00
4.	80.00	56.	50.00	108.	25.00	160.	275.00	212.	50.00	264.	95.00
5.	55.00	57.	65.00	109.	32.50	161.	60.00	213.	100.00	265.	500.00
6.	55.00	58.	20.00	110.	55.00	162.	17.50	214.	35.00	266.	70.00
7.	15.00	59.	125.00	111.	45.00	163.	25.00	215.	35.00	267.	95.00
8.	30.00	60.	80.00	112.	360.00	164.	35.00	216.	50.00	268.	80.00
9.	200.00	61.	80.00	113.	30.00	165.	25.00	217.	40.00	269.	300.00
10.	25.00	62.	40.00	114.	40.00	166.	40.00	218.	40.00	270.	10.00
11.	35.00	63.	70.00	115.	35.00	167.	12.50	219.	130.00	271.	30.00
12.	40.00	64.	175.00	116.	180.00	168.	20.00	220.	250.00	272.	75.00
13.	105.00	65.	37.50	117.	130.00	169.	125.00	221.	250.00	273.	35.00
14.	325.00	66.	105.00	118.	95.00	170.	60.00	222.	225.00	274.	55.00
15.	15.00	67.	60.00	119.	40.00	171.	17.50	223.	425.00	275.	95.00
16.	65.00	68.	40.00	120.	85.00	172.	260.00	224.	650.00	276.	65.00
17.	10.00	69.	85.00	121.	10.00	173.	40.00	225.	20.00	277.	95.00
18.	30.00	70.	25.00	122.	22.50	174.	60.00	226.	80.00	278.	250.00
19.	40.00	71.	20.00	123.	70.00	175.	20.00	227.	25.00	279.	225.00
20.	25.00	72.	22.50	124.	75.00	176.	175.00	228.	145.00	280.	325.00
21.	40.00	73.	90.00	125.	70.00	177.	175.00	229.	25.00	281.	225.00
22.	55.00	74.	75.00	126.	75.00	178.	25.00	230.	22.50	282.	1250.00
23.	85.00	75.	35.00	127.	80.00	179.	85.00	231.	30.00	283.	55.00
24.	65.00	76.	175.00	128.	60.00	180.	10.00	232.	95.00	284.	105.00
25.	50.00	77.	250.00	129.	85.00	181.	30.00	233.	85.00	285.	35.00
26.	225.00	78.	60.00	130.	175.00	182.	40.00	234.	45.00	286.	500.00
27.	40.00	79.	55.00	131.	150.00	183.	25.00	235.	95.00	287.	30.00
28.	70.00	80.	65.00	132.	70.00	184.	35.00	236.	85.00	288.	12.50
29.	130.00	81.	125.00	133.	185.00	185.	25.00	237.	85.00	289.	5.00
30.	185.00	82.	160.00	134.	60.00	186.	12.50	238.	100.00	290.	5.00
31.	550.00	83.	42.50	135.	825.00	187.	25.00	239.	165.00	291.	20.00
32.	240.00	84.	130.00	136.	35.00	188.	115.00	240.	55.00	292.	450.00
33.	375.00	85.	40.00	137.	30.00	189.	55.00	241.	1100.00	293.	40.00
34.	45.00	86.	85.00	138.	525.00	190.	105.00	242.	45.00	294.	25.00
35.	60.00	87.	160.00	139.	45.00	191.	10.00	243.	45.00	295.	245.00
36.	60.00	88.	335.00	140.	30.00	192.	50.00	244.	70.00	296.	350.00
37.	95.00	89.	250.00	141.	35.00	193.	25.00	245.	75.00	297.	45.00
38.	105.00	90.	295.00	142.	100.00	194.	150.00	246.	125.00	298.	65.00
39.	85.00	91.	500.00	143.	50.00	195.	45.00	247.	140.00	299.	35.00
40.	30.00	92.	60.00	144.	205.00	196.	1050.00	248.	10.00	300.	30.00
41.	225.00	93.	35.00	145.	55.00	197.	15.00	249.	55.00	301.	45.00
42.	40.00	94.	20.00	146.	90.00	198.	5.00	250.	60.00	302.	265.00
43.	22.50	95.	20.00	147.	105.00	199.	24.00	251.	40.00	303.	115.00
44.	12.50	96.	20.00	148.	130.00	200.	12.50	252.	140.00	304.	65.00
45.	42.50	97.	35.00	149.	30.00	201.	7.50	253.	200.00	305.	210.00
46.	82.50	98.	40.00	150.	105.00	202.	105.00	254.	165.00	306.	15.00
47.	30.00	99.	60.00	151.	80.00	203.	35.00	255.	195.00	307.	85.00
48.	35.00	100.	85.00	152.	45.00	204.	55.00	256.	75.00	308.	95.00
49.	65.00	101.	165.00	153.	50.00	205.	300.00	257.	280.00	309.	12.50
50.	35.00	102.	35.00	154.	65.00	206.	60.00	258.	25.00	310.	105.00
51.	40.00	103.	60.00	155.	275.00	207.	45.00	259.	55.00	311.	275.00
52.	55.00	104.	160.00	156.	200.00	208.	45.00	260.	57.50	312.	140.00

(Continued on page 6)

The National Museum Of Cambridge Glass

by Cindy Arent

The progress is continuing as we prepare to open the museum on April 3. On March 23, a group of tour directors from the tri-state area will be visiting the new museum and on April 9, another group of tour directors will be arriving from Canada.

During auction weekend, Rick and Cindy Jones arrived in Cambridge with a large part of their Caprice collection which will be featured in the Rotating Display Room. The collection is in place and looks fantastic!

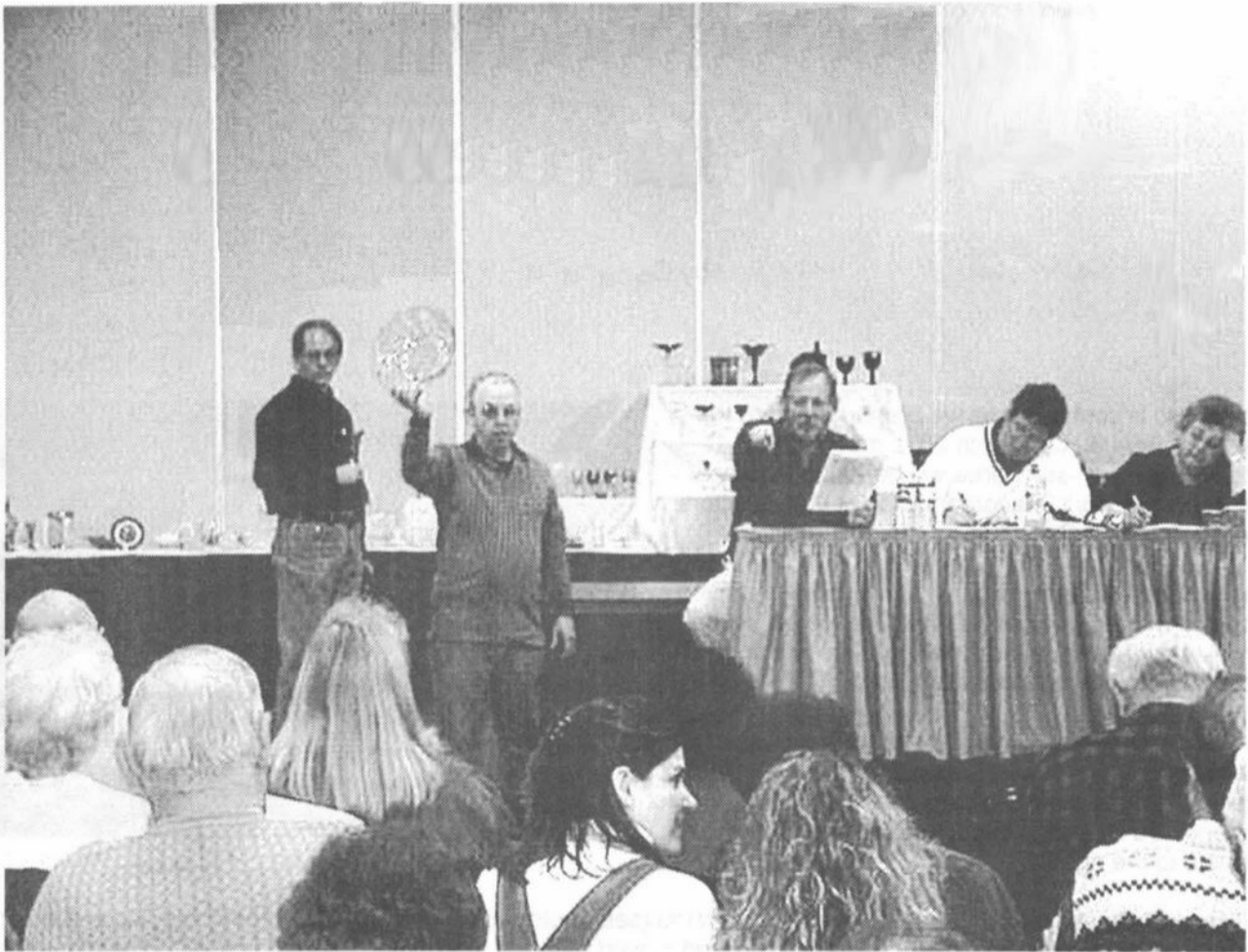
Anna Walker arranged for the making of the artificial food for the Dining Room Display. Included were four shrimp cocktails, a pork roast and a loaf of bread. The purchase was sponsored by the Cambridge Cordials study group (see photo to the right).



The History of Glassmaking area is beginning to develop (see photo below). Glassmaking tools, moulds and equipment from the NCC storage building have been cleaned and moved to the museum (see photo on cover). The mannequins to be used in the display are to arrive soon and will help teach visitors about the glassmaking process. As the area develops, former employees of The Cambridge Glass Company will be visiting the museum to lend their expertise to the set up of the etching, decorating, and engraving tables. The former Cambridge Glass Company employees are also getting excited about the museum. Here below (L-R) Babe Calvert shared information about the etching process and Elva Volz explained how the gold decorating was accomplished using an original decorating wheel from the factory. Elva was featured in the Crystal Lady video and just turned 95 years old. We appreciate these ladies taking the time to share their invaluable knowledge and helping to authenticate the History of Glassmaking display area.

I would like to sincerely thank everyone for their extra effort during the past months. We are very proud of the new facility and are looking forward the Grand Opening Celebration on June 27 during convention week. We hope to see many of you at the reception!





**Watch for More About the 2002 Auction
Next Month**

2002 Benefit Auction Results Continued- Prices Per Lot

313	35.00	327	30.00	341	40.00	355	200.00	369	20.00	383	60.00
314	75.00	328	20.00	342	95.00	356	45.00	370	100.00	384	40.00
315	135.00	329	5.00	343	40.00	357	10.00	371	55.00	385	25.00
316	40.00	330	60.00	344	85.00	358	50.00	372	45.00	386	120.00
317	20.00	331	55.00	345	85.00	359	17.50	373	65.00	387	170.00
318	5.00	332	120.00	346	80.00	360	45.00	374	25.00	388	115.00
319	10.00	333	20.00	347	65.00	361	140.00	375	10.00		
320	5.00	334	27.00	348	45.00	362	20.00	376	10.00		
321	15.00	335	85.00	349	55.00	363	45.00	377	55.00		
322	60.00	336	22.00	350	25.00	364	45.00	378	85.00		
323	40.00	337	30.00	351	55.00	365	200.00	379	80.00		
324	80.00	338	12.00	352	30.00	366	20.00	380	25.00		
325	250.00	339	185.00	353	35.00	367	95.00	381	85.00		
326	45.00	340	30.00	354	20.00	368	12.50	382	55.00		

Celebration Update

Convention 2002

by Mark Nye

As requested at the 2001 Annual Meeting, the convention registration form is in this month's (April) issue. The deadline for returning the completed form is **June 1** with the Early Registration Prize deadline being **May 6**.

Just a reminder that you must register for any of the events on the form that you plan on attending, even those offered at no charge. This information is needed so the caterer can properly plan for food. As always, registration is not required for the educational programs, Bring & Brag, Glass Identification, and the Annual Meeting, this year being held following the Friday Night Supper. (Registration for the supper is required. You may eat elsewhere and then come in just for the meeting.) The registration fee does include \$5.00 for admission to the glass show Friday night and all day Saturday.

One additional change in this year's convention events is the elimination of the Thursday night picnic. Replacing this event is the Grand Opening of the NCC National Museum of Cambridge Glass. Beverages and dessert only will be served at the grand opening. The Grand Opening/Ribbon Cutting is now scheduled for 7:30 p.m. (instead of the 6:00 p.m. time given in the tentative event schedule published last month) so you will have plenty of time to have dinner first. Look for a return of the picnic next year.

When completing your registration form, please indicate whether or not this is your first NCC Convention. The Convention Committee knows those members who regularly attend but in the case of infrequent attendees or those who are attending their first convention we really do not want to guess. There is placed in the packet given each attendee a list of those registered along with their home city and state (no street address is printed), so please complete the address portion of the form. Your full address is requested in case we have to contact you prior to convention.

If you wish a vegetarian meal or a special meal for medical reasons, please make this known at the time you pick up your registration packet.

Information-only requests are made on page 2 (reverse side) of the registration form. We would like to know if you are planning to attend the listed events in order to: 1) tell the restaurants how many to expect; 2) help the Civic Center plan for the Smith Auction; and 3) plan for beverage and dessert requirements at the Museum grand opening.

If there is adequate response to the question regarding major field of collecting, this information will be added to the list of attendees included in the registration packet. Answering this question is strictly voluntary and unless 50% or more respond, the information will not be added to the list.

The program to be presented by the Miami Valley Study Group will cover Cambridge candlesticks from 1902 until 1958. The second program will be a history of The Cambridge Glass Co. in honor of the 100th Anniversary of its first production.

A tentative event schedule was published in the March issue. Another schedule will be in the May issue. No further major changes are anticipated although there may be some time changes.

In lieu of the mini-auction we will be having a silent auction Friday night. Items in this auction will have a minimum value of \$25.00. More on this in the May issue.

See you in June.

NATIONAL CAMBRIDGE COLLECTORS, INC.

29th ANNUAL CONVENTION - JUNE 2002



100th ANNIVERSARY - CAMBRIDGE GLASS COMPANY



TENTATIVE EVENT SCHEDULE

WEDNESDAY, JUNE 26

8:00 a.m.	Local Glass Factories Open For Tours	Boyd and Mosser Factories
9:00 a.m.	Baker Family Museum Opens	Baker Family Museum - Caldwell
9:00 a.m.	Fenton Tour Group Departs	NCC National Museum of Cambridge Glass
10:00 a.m.	NCC Museum Opens	NCC National Museum of Cambridge Glass
11:00 a.m.	Fenton Factory Tour	Fenton Art Glass, Williamstown, WV
1:00 p.m.	Bennett Museum Opens	Bennett's Cambridge Glass Museum
4:00 p.m.	Orientation Session for "First Timers"	Location to be announced
6:00 p.m.	Dutch Treat Dinner	China Village Restaurant

THURSDAY, JUNE 27

8:00 a.m.	Local Glass Factories Open for Tours	Boyd & Mosser Factories
9:00 a.m.	Baker Family Museum Opens	Baker Family Museum - Caldwell
9:00 a.m.	Registration Desk Opens	Pritchard Laughlin Civic Center
10:00 a.m.	Smith Auction (Not sponsored by NCC)	Pritchard Laughlin Civic Center Galleria
10:00 a.m.	NCC Museum Opens	NCC National Museum of Cambridge Glass
1:00 p.m.	Bennett Museum Opens	Bennett's Cambridge Glass Museum
4:00 p.m.	Orientation Session - "First Timers"	Conference Room - Pritchard Laughlin Civic Center
7:30 p.m.	Grand Opening	NCC National Museum of Cambridge Glass

FRIDAY, JUNE 28

8:30 a.m.	Continental Breakfast	Pool Side - Best Western Motel
9:00 a.m.	Registration Desk Opens	Pritchard Laughlin Civic Center
9:30 a.m.	Joint Study Group Meeting	Conference Room - Pritchard Laughlin Civic Center
10:00 a.m.	NCC Museum Opens	NCC National Museum of Cambridge Glass
11:00 a.m.	Program - Topic to be announced	Conference Room - Pritchard Laughlin Civic Center
2:00 p.m.	Glass Show Opens	Exhibit Hall - Pritchard Laughlin Civic Center
6:00 p.m.	Glass Show Closes	Exhibit Hall - Pritchard Laughlin Civic Center
6:00 p.m.	Convention Chairman's Reception - Cash Bar	Galleria - Pritchard Laughlin Civic Center
6:30 p.m.	Friday Night Supper	Galleria - Pritchard Laughlin Civic Center
7:30 p.m.	NCC, Inc. Annual Meeting	Galleria - Pritchard Laughlin Civic Center

SATURDAY, JUNE 29

7:00 a.m.	Glass Dash Opens	Beech Grove Family Development Center
10:00 a.m.	Glass Show Opens	Exhibit Hall - Pritchard Laughlin Civic Center
10:00 a.m.	NCC Museum Opens	NCC National Museum of Cambridge Glass
11:00 a.m.	Glass Dash closes	Beech Grove Family Development Center
12:00 p.m.	Program - Topic to be announced	Conference Room - Pritchard Laughlin Civic Center
2:00 p.m.	Glass I.D. - Bring & Brag	Conference Room - Pritchard Laughlin Civic Center
4:00 p.m.	Glass Show Closes	Exhibit Hall - Pritchard Laughlin Civic Center
7:00 p.m.	President's Reception - Cash Bar	Galleria - Pritchard Laughlin Civic Center
7:30 p.m.	Annual Banquet	Galleria - Pritchard Laughlin Civic Center
8:30 p.m.	Speaker	Theater - Pritchard Laughlin Civic Center
10:00 p.m.	Pool Side Party (BYOB)	Budget Host Deer Creek Motel

SUNDAY, JUNE 30

8:30 a.m.	Dutch Treat Breakfast - Convention After-Glo	Cracker Barrel
TBA	Cambridge Glass Co. Workers Reunion	NCC National Museum of Cambridge Glass

NATIONAL CAMBRIDGE COLLECTORS, INC.



29th ANNUAL CONVENTION JUNE 26 - JUNE 29, 2002 ADVANCE REGISTRATION FORM



Please complete this form and return it to be received no later than June 1, 2002. To be eligible for the early registration prize drawing your form must be received by May 6. Make your check payable to National Cambridge Collectors, Inc. and mail completed form and check to:

National Cambridge Collectors, Inc.
Convention Registration
P.O. Box 416
Cambridge, OH 43725-0416

Each person registering for the convention must pay the registration fee of \$20.00 regardless of the number of events you plan to attend. The registration fee includes weekend admission to the NCC Inc. Glass Show, the no charge events, participation in educational events and entitles you to receive the Convention Booklet and the Convention Souvenir. You must register for all events you wish to attend, including those offered at no charge. For dealers in the NCC Inc. Glass Show wishing to participate in other convention activities, the registration fee is \$15.00 (regular registration fee less show admission charge). The benefits are the same. For children under ten years there is no registration fee. However, they do not receive the convention souvenir or souvenir booklet. See reverse side for meal functions if bringing children under ten.

Please list separately each person registering. Names should be given as wanted on your name tags. Please provide your NCC, Inc. membership number(s) and indicate if you are attending your first convention by writing yes or no under the "1st Conv." heading. If registering more than 3, list additional members of your party on the reverse side.

NAME - PLEASE PRINT OR TYPE	MEMBER#	1ST CONV.
1. _____		
2. _____		
3. _____		

Address: _____

Street/P.O. Box	City	State	Zip
-----------------	------	-------	-----

<u>Activity</u>	<u>Fee</u>	<u>How Many</u>	<u>Total</u>
Registration	\$20.00	_____	_____
Registration (Show Dealers)	\$15.00	_____	_____
Fenton Tour	n/c	_____	_____ n/c
Continental Breakfast - Friday A.M.	n/c	_____	_____ n/c
Friday Night Supper	\$12.00	_____	_____
Saturday Night Banquet	\$25.00	_____	_____
		Total	_____

2002 CONVENTION REGISTRATION FORM - PAGE 2

ADDITIONAL REGISTRANTS

NAME - PLEASE PRINT OR TYPE

MEMBER #

1ST CONV.

4. _____

5. _____

6. _____

REGISTRATION - CHILDREN UNDER TEN

No. for Friday Supper: _____ @ \$6.00 _____

No. for Banquet: _____ @ \$12.00 _____

Total _____

If you would like to assist the Convention Committee during Convention, check here, _____

For Information & Planning Purposes Only

I/we plan on attending the Dutch Treat Dinner Wednesday night* ____ Yes ____ No

I/we plan on attending the Museum Grand Opening Thursday evening ____ Yes ____ No

I/we plan on attending the Dutch Treat Breakfast Sunday Morning** ____ Yes ____ No

I/we plan on attending the Smith Auction ____ Yes ____ No

Major field of Cambridge Collecting _____ ***

*Location is the China Village Restaurant - 1210 Southgate Parkway
(same strip mall as Brighton's Ice Cream)

**Location is Cracker Barrel Restaurant

***This information may be included in the list of attendees
that is placed in each registration packet.

Cambridge Glass Books Order Form



Mail to: National Cambridge Collectors
P.O. Box 416
Cambridge, OH 43725-0416

Your Name _____

Address _____

City, State Zip _____

Phone Number _____

Title	Qty	Price	Item Total

Postage: First Book \$3.00, each add'l book \$1.00 _____

Tax: Ohio residents ONLY, 6.5% _____

GRAND TOTAL _____

PAGES 9 - 12
HAVE BEEN DESIGNED
TO BE PULLED OUT AND LEAVE
YOUR CRYSTAL BALL
IN TACT.

PLEASE USE PAGES 9 AND 10 TO REGISTER
FOR CONVENTION. USE THE FORMS ON
PAGES 11 AND 12 TO SEND COMMENTS
AND TO ORDER BOOKS OR OTHER ITEMS.

CAMBRIDGE GLASS BOOKS FOR SALE*By National Cambridge Collectors, Inc.***Colors in Cambridge Glass**128 pages, 60 color plates, full index. Hard-board **w/value guide** 19 95**1910 Near Cut**108-page reprint of original 1910 catalog PB **w/value guide** 14 95**1930-1934 Cambridge Glass Co. Catalog Reprint**250-page reprint of original catalog PB **w/value guide** 14 95**1030-1934 Catalog Index**

Index to above catalog 2 00

1949-1953 Cambridge Glass Co. Catalog Reprint

300-page B&W reprint of original catalog PB

w/ value guide 14 95**1956-1958 Cambridge Glass Co. Catalog Reprint**160-page B&W reprint of original catalog PB, **no value guide** 12 95**Cambridge Caprice**200-page book illustrating one of the most popular lines of Cambridge Glass. Lists color, decorations, reproductions and rare pieces. PB **w/value guide.** 19 95**Cambridge Rose Point** by Mark Nye94-page book listing of Rose Point from several sources: catalogs, trade journals, price lists, etching plates, and other surviving company records. One of the most popular lines of The Cambridge Glass Company, showing the many blanks on which Rose Point might be found along with the history and production life of the line. B&W PB **w/ 2000 value guide** 14 95**Etchings by Cambridge, Vol. 1** By the Miami Valley Study Group84-page book showing samples of plate etchings applied by The Cambridge Glass Company. B&W, PB. Due to the style of publication this book **does not have a value guide** 14 95**Etching Booklet, Blossom Time**, B&W, PB, 26 pages 7 95**Etching Booklet, Chantilly**, B&W, PB, 44 pages 7 95**Etching Booklet, Candlelight**, B&W, PB, 30 pages 7 95**Etching Booklet, Wildflower**, B&W, PB, 42 pages 7 95**Etching Booklet, Portia**, B&W, PB, 57 pages 7 95**Etching Booklet, Diane**, B&W, PB, 53 pages 7 95**Etching Booklet, Elaine**, B&W, PB, 64 pages 9 95**Non Cataloged Etchings book**, B&W, PB, 70 pages 12 95**Rock Crystal Engravings book**, B&W, PB, 94 pages 14 95**Crystal Ball Table of Contents** Issue #69, January 1979 thru Issue #320, December 1999 2 00**The Home of "Near-Cut" Factory Post Card**

B&W picture of The Cambridge Glass Company post card 50

Crystal Lady Video

Approximate 25 minute video copy of old Cambridge Glass Co. film showing the making of a goblet in the Cambridge factory 15 00

Rose Point Value Guide (Included with Rose Point Book purchase)**Value guide only**, includes postage 5 00

N C C Members can purchase the above publications at a 10% off

No Discount on the following books**1940 - 1941 Cambridge Glass Co. Catalog Reprint**250-page reprint of original catalog and all well known supplemental pgs. Loose Leaf & Drilled, ready for placement in your own three-ring binder. Due to its size, the reprint **does not have a value guide**. B&W 25 00**Binder for 1940/1941 catalog** with logo on front 5 00**Cambridge Glass 1927-1929** by Bill and Phyllis Smith. 66-page reprint of original catalog B&W paper-back **with updated value guide** 7 95**Cambridge Stemware** by Mark A. Nye167 page book showing as many known Cambridge stems known at the time of publication B&W paperback **No value guide** 19 95**Cambridge Glass Company** by Mary, Lyle and Lynn Welker. 120 pages of reprints from eight old catalogs. B&W paperback **No value guide** 10 00**Cambridge, Ohio Glass in Color II** by Mary, Lyle and Lynn Welker15 Color plates showing choice pieces from their collection. Spiral-bound **No value guide** 5 95**Cambridge Glass Company 1903** by Harold & Judy Bennett106-page reprint of original catalog B&W, PB, **no value guide** 5 00**Reflections** by the Degenhart Paperweight & Glass Museum

45-page book giving a history of all 18 glass companies in Guernsey County B&W paperback with pictures 5 00 including postage

OTHER ITEMS FOR SALE FROM THE NATIONAL CAMBRIDGE COLLECTORS**2000 Museum Fund Raising project - Scottie Dog Bookends made in original Cambridge Molds, by Mosser Glass. Made in Ruby (Red) Marked with N.C.C., the 2000 date and Mosser logo.****\$100.00 per pair**

Please include \$10.00 per pair - shipping and handling.

Ohio residents include \$6.50, per pair, for Ohio State Sales Tax

The following Convention Favors are marked with the N C C name & yr
Convention favors:

1995 Cranberry Ice, Cascade Goblet	5 00
1998 Yellow Iridized, Cascade Goblet	5 00
2000 Carnival Mt. Vernon Juice Tumbler	5 00
2001 Carnival Mt. Vernon Juice Tumbler	5 00
Prism with "Cambridge" on one side Fund raiser, Mint Julep	15 00

Donate \$10.00 to the N. C. C. building fund and we will send you a nice, Yellow Canvas Tote Bag with N.C.C. logo on front**Books by Gene Florence**
Hard-bound color with value guides

Very Rare Glassware of the Depression Years (Third Series)	24 95
Very Rare Glassware of the Depression Years (Fifth Series)	24 95
Very Rare Glassware of the Depression Years (Sixth Series)	24 95
Elegant Glassware of the Depression Era (Eighth Edition)	19 95
Collectible Glassware 40s-50s-60s (Fourth Edition)	19 95
Stemware Identification, featuring Cordials, 1920s-1960s	24 95
Glass Candlesticks of the Depression Era	24 95

Universal Dinnerware and its predecessors, including:

Cambridge Art Pottery	
The Guernsey Earthenware Co.	
The Oxford Pottery Co.	
The Atlas Globe China Co.	
All in one beautiful paper-back, color presentation by Timothy J. Smith	
176 pages	29 95

Past National Cambridge Collectors Convention booklets

1994 thru 2001	(per year) 5 00
Complete set of 8 years (save \$15.00)(include \$3.00 postage)	25 00

Salt & Pepper tops, Polycarbon plastic, will fit most regular sized Cambridge shakers such as Rose Point ftd and flat bottomed shakers. Also fit Heisey Rose, Saturn, Plantation, Crystalite and some Orchid. Fit some Anchor Hocking and Candlewick. Made from the same material used to make taillight lenses for autos. We now have the smaller size to fit the individual Caprice S&P's

Price: 1 to 9 pairs @ \$6 per pair - 10 or more pairs @ \$5 per pair (if ordering only the tops include \$3.00 shipping per order)

*The Year In Poetry - by Paul White, 38 pgs PB (including postage) \$7.50 all proceeds go to the Paul White fund to purchase glass for the Museum*Please add postage and handling to your order
(first item, \$3.00; each additional item \$1.00 unless otherwise noted)

Ohio residents add 6 1/2% Ohio State Sales Tax

Only check or money order. NO CASH, NO CHARGE CARDS

Send payment and orders to:

National Cambridge Collectors, Inc.
P. O. Box 416
Cambridge, Ohio 43725-0416

NATIONAL STUDY GROUP REPORTS



Study Group #13 The Miami Valley (Ohio) Study Club

February 11, 2002

The meeting was called to order by the president Larry Everett at 7:00 p.m. There were 12 members present.

There was no secretary's report as the minutes had been mailed to each member. The treasurer reports that there has been an addition of \$11.00 to the Christmas fund which has been added to the amount submitted to the endowment fund.

Old Business:

Frank Wollenhaupt has received a copy of the list of Cambridge molds owned by the NCC. Anyone desiring a copy of this list, please see Frank.

New Business:

Diane Gary and Larry Everett volunteered to serve as the contact persons for the club on the NCC web site.

Officers for the coming year will be elected in April.

Volunteers are needed to work at the museum to get it ready for the opening in April. Anyone who can volunteer can meet at the Museum each weekend till the opening.

Judy and Ken Rhoads volunteered to lead the "mentoring" program for first-time attendees at the convention. Judy has submitted a draft of plans to the NCC, and these will be discussed at the quarterly meeting.

We are in need of a program for the March meeting. Georgia suggested that we do a "book look," reviewing the 30-34 catalog. So each member should bring his catalog to the next meeting for discussion.

Several ideas were discussed for the program for convention. It was finally decided to use a timeline representing major happenings at Cambridge glass from beginning to end, and to walk through the timeline with Cambridge candlesticks. The exact title of the program will be determined at the next meeting.

Show and Tell:

#680 compact and cover in Peach-Blo with satin finish and painted decoration with original powder puff; Wetherford 4" powder and cover in Emerald; #54 7" footed bowl in Azurite w/gold trim; #752 Crystal cigarette

holder w/ashtray foot; #1408 60 oz cocktail mixer in Carmen; #55 14" oval 2-piece epergne in Springtime Krystol; #5 Everglade 2-piece flower holder; #32 Everglade candlestick in Pearl Mist; 5" Rosepoint trivet in a Wallace sterling pierced frame; #118 8" Crystal basket w/floral RCE; #1393 cocktail mixer in Royal Blue w/remnants of original factory label; #1203 2 1/2 oz shammed tumbler in Royal Blue.

The program for the evening was a discussion led by David Rankin of the display of glass and pottery sponsored by the Miami Valley Cambridge Club at the Boonshoft Museum of Discovery in 2003. This will be a display in honor of the bicentennial of the state of Ohio. Assignments were made for each of the major potters and glassmakers. Each member should get a brief history of the company, and a photo, if possible. A representation of two or more pieces of the pottery or glass should be available for display. David Rankin had photos of the various types of display cases that will be available for our use. Since the display will be in January - March 2003, plans will be finalized at a later date.

—Respectfully submitted, Diane H. Gary

Study Group #16 Elegant Glass Collectors

The Elegant Glass Collectors met on February 2, 2002, at Wheaton Village for the Mid-Winter Antiques Show. Members attending were: Ken and Jane Filippini, Bill and Yvonne Dufft, Pam Earussi, and Paul and Gail DuChamp. Shirley Salanon from the National American Glass Club was a guest.

We toured the show, and met for lunch in the Paperwaiter Restaurant. We discussed reading the By-Laws for our study group at the next meeting. A theme for our display in Harrisburg was identified as Candlesticks/Candlelight. We are hoping that members would be willing to display any Candlelight they may have.

Our next meeting will be held in March at Paul and Gail DuChamp's house, the date to be finalized. Bill Dufft volunteered to be our email contact person.

Seen at the show were: Rosepoint 3-part covered candy dish, a very unusual and beautiful Azurite small bowl on an Azurite base. I had not seen a base other

NATIONAL STUDY GROUP REPORTS

~~~~~

than black. There also was a Light Emerald Draped Lady, and a console set consisting of Light Emerald candlesticks, #437 and paneled bowl. There was a Carnival strawberry cuspidor for \$695 displayed.

We also met our speaker, Bruce Dooley, who presented Carnival Glass at our 2001 Convention.

We are looking for new members to join our study group. If you are interested, won't you call me at (215) 855-5423?

—submitted by Pamela Earussi

## **Study Group #17 The Cambridge Wildflowers**

On Wednesday, January 16, 2002, the Wildflowers met at the home of David Ray at 7:00 p.m. Refreshments were served and the meeting was called to order by president Linda Roberts. We welcomed two new members, Linda Speakman and Ida Mae Prichard. We

dispensed with the reading of the minutes and got right into our program presented by David Ray on Nude Stems.

David had put together and labeled a beautiful display of nudes, so that we could view and compare the various pieces, from the 1 oz. brandy, to the 3 oz cocktail to the champagne to the cigarette boxes and comports. An excellent and informative handout was studied which included a chart listing each size of nude stem and each color in which the bowl was known to be made. We discussed the three sizes of the nude stems: small, medium and large, as well as which was more rare and how size and color affects the prices.

We then looked at which etchings are seen on nude stems; the crackle treatment, Rockwell silver, enamel, and silk screen designs seen on nudes; as well as frosted and Pearl Mist treatments. The program ended with a discussion of oddities and rare one-of-a-kind items seen on nude stems.

The informative and fun evening ended with two other Show and Tell items: a Community line Ivory iridized vase with black enamel and daisy decoration, and a Crystal cocktail shaker with frosted treatment and Rockwell sterling seahorse. The meeting adjourned at 9:45 p.m.

New members in the Columbus area are always welcome and can contact either Linda Roberts at [lrobert2@columbus.rr.com](mailto:lrobert2@columbus.rr.com) or Barbara Wyrick at [bwyr@ee.net](mailto:bwyr@ee.net). Our next meeting will be Thursday, February 21, 2002, and the program will be on Cambridge flower frogs.

—submitted by Barbara Wyrick, secretary

## **Study Group #17 The Cambridge Wildflowers**

On Thursday, February 21, 2002, the Wildflowers met at the home of Ken and Jackie Nichol at 7:30 p.m. Refreshments of shrimp cocktail, relish tray, a variety of cheeses, and homemade apple pie were served. We dispensed with the reading of the minutes and got right into our program on Cambridge flower frogs.

### **NEW STUDY CLUB FORMED IN VIRGINIA AREA**

### **NEW STUDY CLUB HOPING TO GET STARTED IN CANTON, OHIO AREA**

Interested in joining...

Contact:  
NCC, Inc.  
P.O. Box 416  
Cambridge, Ohio 43725-0416  
Or  
Email: [NCC\\_CrystalBall@yahoo.com](mailto:NCC_CrystalBall@yahoo.com)

*(Continued on page 17)*

# Colors in Cambridge Glass

E U L B W O L L I W E B O N Y  
J M T U R Q U O I S E T W E H  
A M A R D I G R A S R I I E C  
D I A N T H U S P I N K A R O  
E E G A D T M I U D N T G G B  
C U L O O A S O S N H E M T A  
I L L P L T R O O E S U C S L  
N B A B A D R I R N L E M E T  
N Z R C L B K B N B L Y T R B  
A T H U L A L R E G S I E O L  
M I C U B O Y R Y T O B G F U  
O R E E O I R O I S M L L H E  
N E B M R Y N C R A T A D T T  
R O S E D U B A R R Y O P A L  
N A C S U T N W O R C I L O N

AMBER  
CROWNTUSCAN  
FORESTGREEN  
JADE  
MOONLIGHT  
OPAL  
ROSEDUBARRY  
SUNSET  
WILLOWBLUE

CINNAMON  
DIANTHUSPINK  
GOLDKRYSTOL  
MANDARINGOLD  
MULBERRY  
PISTACHIO  
ROYALBLUE  
TOPAZ  
WINDSORBLUE

COBALTBLUE  
EBONY  
HEATHERBLOOM  
MARDIGRAS  
MYSTIC  
RITZBLUE  
RUBINA  
TURQUOISE

-----



# NATIONAL STUDY GROUP REPORTS

*(Continued from page 15)*

Ken and Jackie had a beautiful display of a variety of different flower frogs in different colors, each sitting in a color matched console bowl, so their dining room table was truly spectacular. Other members also brought flower frogs for viewing. Two informative handouts were passed out, one of which included a chart listing each of the flower frogs and each color in which it was known to be made. The handouts also had information on the sizes and types of bases on the various frogs.

We had a rather in depth discussion about which companies got the Cambridge molds for some of the frogs and reproduced them. Summit Art Glass had the draped lady mold and produced the draped lady with the lamp base in a number of colors, as well as having the 11" Bashful Charlotte mold, from which they have produced Charlottes in Cobalt Blue and Carmen red (colors Cambridge never used on frogs).

Mirror Images has also produced a "Venus Rising" which is the 6 1/2 inch Bashful Charlotte with the holes in the base eliminated. And to some pieces they added a "C in a triangle" logo to the base of the frog (one was just listed on eBay as Cambridge), but Cambridge never signed their flower frogs so pieces with this Cambridge logo are not Cambridge! Mirror Images also had the Draped Lady made for them by Dalzell-Viking in colors like red and Heatherbloom.

A few of the Cambridge frogs on display included: the Draped Lady in Mocha, one in Peachblo Satin, and the rare large size in Willow Blue; the Bashful Charlotte in Light Emerald, and in Moonlight Blue; the Crystal blue jay; the large and small heron in Crystal; a bird on the stump in Light Emerald; the eagle on the stump in Crystal; the Melon Boy in Peachblo; and the Mandolin Lady in Crystal.

The informative and fun evening ended with a few other Show and Tell items: a Pristine Ebon covered candy with gold silkscreened roses; a large Everglades Crystal satin vase with Daffodil; a Crystal roundware sugar with blue enameled Blue Willow; and a #1284 Light Emerald vase with Crystal foot etched Diane. The meeting adjourned at 10:45 p.m.

New members in the Columbus area are always welcome and can contact either Linda Roberts at [lrobert2@columbus.rr.com](mailto:lrobert2@columbus.rr.com) or Barbara Wyrick at [bwyr@ee.net](mailto:bwyr@ee.net)

—submitted by Barbara Wyrick, secretary

## UPCOMING EVENTS

- April 26-28 47th Annual Spring Eastern National Antiques Show & Sale  
Harrisburg, Pennsylvania  
Information: (610) 437-5534 or [jcmaena@aol.com](mailto:jcmaena@aol.com)
- May 16-18 10th Annual American Glass Rally  
Tualatin, Oregon  
Information: [www.rainofglass.org](http://www.rainofglass.org)  
[cjustabob@aol.com](mailto:cjustabob@aol.com), (503) 238-4327
- May 30-June 2 National Imperial Glass Collectors Society's Annual Convention  
St. Clairsville, Ohio  
Information: [www.imperialglass.org](http://www.imperialglass.org)  
Email: [mike@mikewilson.mv.com](mailto:mike@mikewilson.mv.com)
- June 7-9 Old Morgantown Glass Show and Sale  
Morgantown, West Virginia  
<http://www.oldmorgantown.org>
- June 19-22 Heisey Collectors Convention Glass Show  
Newark, Ohio  
Information: (740) 345-2932
- July 18-20 The National Depression Glass Association  
Depression Glass Convention Show & Sale  
Kansas City, Missouri  
Information: [lake6134@juno.com](mailto:lake6134@juno.com)  
[www.ndga.net](http://www.ndga.net)
- July 27-28 Duncan Miller Convention Glass Show & Sale  
Washington, Pennsylvania  
Information: (724) 225-9950

Know of any interesting events or shows coming up?  
Please let us know, and as space allows, we will print information about these events.



## Membership Benefit

Another great benefit to your membership is access to a private "members only" website.

Copies of research articles from the back issues of the *Crystal Ball* are now available there. The old back issues were lost in the flood of 1998, but now the research materials contained in them are coming back to be shared with the entire membership.

To access the site, follow this URL:

<http://www.cambridgeglass.org/NCCMembers>

You will be prompted for an ID and password. These are case sensitive. They will also change periodically, so keep reading your current issues of the *Crystal Ball*. Please do not share the passwords with non-members! The private site is intended to benefit you, and that benefit will be diluted if the ID and password is shared indiscriminately.

ID: NCC

Pswd: TriangleC

# ~ GLASS ~ MARKETPLACE

**WANTED:** Crystal, 3500, Gadroon with gold stippling (gold icicle trim) on rim. Clarets, champagnes, and/or wines. No etching. **L. Groban (301) 530-6705.**

**WANTED:** Six #3121 3-½ oz. wines with "Elaine" etching. **Melissa Jaworski, 6140 S. Pine Cove Ct., Brighton, MI 48116. 660-258-2485.**

**Time to Advertise Here!**

**Check our reasonable rates  
on page 2**

## WE CLEAN CLOUDY GLASS! SATISFACTION GUARANTEED

Yes, *it is true* that we really can restore the interior of your cruet, vase, decanter and other internally etched items back to near original condition.

*We do not oil, wax or cover up the sickness in any way! We actually remove it.*

*No items are too sick to clean! If we cannot clean an item to meet your satisfaction, the cleaning is FREE!*

*Send no money up front. When we return your item a bill will be enclosed for the postage and cleaning. If you are not satisfied, only the return postage is requested.*

Most items clean in 7-8 weeks. All glass is handled and cleaned at your risk. Some very cloudy items may take several additional weeks.

|                 |              |                   |              |
|-----------------|--------------|-------------------|--------------|
| Cocktail Shaker | \$35-\$40.00 | Salt Shaker (1)   | \$25.00      |
| Cologne         | \$30.00      | Salt Shaker (2)   | \$45.00      |
| Cruet           | \$30.00      | Vases (under 10") | \$30-\$35.00 |
| Decanter        | \$35-\$45.00 | Vinegar & Oil     | \$30.00      |
| Lavendar Jar    | \$25-\$35.00 | Water Bottle      | \$35-\$40.00 |

Ship to: Kim Carlisle & Associates  
28220 Lamong Road, Dept. C  
Sheridan, IN 46069  
(317) 758-5767

kcarlisl@indy.net

2001

## National Cambridge Collectors, Inc.



Presents



*Blossom Time  
Candlelight  
Chantilly  
Diane  
Elaine  
Portia  
Wildflower*

This series covers seven of the major Cambridge etchings. These booklets are similar in style to the Rose Point book. Each contains an article about the etching, listings of all the known pieces, and illustrations of most items. Economically priced at \$7.95 each (Elaine \$9.95), collectors of these etchings cannot afford to be without a copy. Order your copies now. Value guides not available.

(See page 13)



## Stems Without Thorns

As the world's largest supplier of old & new china, crystal, silver and collectibles, Replacements, Ltd. has more than 700 different patterns of Cambridge crystal.

And however much we enjoy selling pieces that were once thought irreplaceable, we love buying them as well. Thanks to people like you, our crystal inventory currently numbers in the hundreds of thousands, and the numbers keep growing every year.

So, if you've been unsuccessfully searching for that elusive piece of Cambridge — or any other type of fine crystal — call us for a free list of pieces available in your pattern. And, if you're looking to sell pieces you currently have, we can help you there, too.

**REPLACEMENTS, LTD.**  
*China, Crystal & Silver • Old & New*

**1-800-REPLACE**  
**(1-800-737-5223)**

1089 Knox Road.  
PO Box 26029, Dept. CB.  
Greensboro, NC 27402  
[www.replacements.com](http://www.replacements.com)

## DEALERS



## DIRECTORY

NOTE: When writing to the dealers listed here, please enclose a SASE!

|                                                                                                                                                                                                                                                                                               |                                                                                                                                                                                                                                                                                                                                                                                                                                                                                                                                                            |                                                                                                                                                                                                                                         |
|-----------------------------------------------------------------------------------------------------------------------------------------------------------------------------------------------------------------------------------------------------------------------------------------------|------------------------------------------------------------------------------------------------------------------------------------------------------------------------------------------------------------------------------------------------------------------------------------------------------------------------------------------------------------------------------------------------------------------------------------------------------------------------------------------------------------------------------------------------------------|-----------------------------------------------------------------------------------------------------------------------------------------------------------------------------------------------------------------------------------------|
| <p><b>DAUGHERTY'S ANTIQUES</b><br/>Jerry and Shirley</p> <p>Antiques and Collectibles * Mostly Glass</p> <p>Shows &amp; Mail Orders 2515 Cheshire No.<br/>402-423-7426 Evenings Lincoln NE</p>                                                                                                | <p><b>CRYSTALLINE COLORS</b></p> <p>Buy, Sell, and Appreciate<br/>Cambridge and Other Elegant Glass<br/><i>I Love Cambridge</i></p> <p>Lynne R. Franks 216-661-7382<br/>Ohio &amp; Western PA Antique Malls</p>                                                                                                                                                                                                                                                                                                                                            | <p><b>THE JONES GROUP</b><br/>Cindy Jones</p> <p>Buy and Sell Cambridge Glass<br/>650 Riverside Drive<br/>Sleepy Hollow, NY 10591<br/>914-631-1656 or E-Mail Caprice0@aol.com</p>                                                       |
| <p><b>Milbra's Crystal</b><br/>Replacement and Matching</p> <p>Buy &amp; Sell<br/>Specializing in<br/>Cambridge<br/>Fostoria<br/>Heisey<br/>and others</p> <p>Milbra Long (817) 645-6066<br/>Emily Seate (817) 294-9837<br/>PO Box 784, Cleburne, TX 76033<br/>E-mail: longseat@flash.net</p> | <p><b>Deborah Maggard, Antiques</b></p> <p>Specializing in Cambridge Glass,<br/>American Hand Made Glass &amp; Victorian Art Glass</p> <p>Please stop and see our extensive collection of<br/>Cambridge Glass at Riverfront Antique Mall in<br/>New Philadelphia, Ohio (Exit 81 off I-77)<br/>Booths 805 and 812<br/>You won't be disappointed!</p> <p>We buy one piece or entire collections, please<br/>contact me at 440-247-5632 &amp; leave a message<br/>or email at debmaggard@worldnet.att.net</p> <p>PO Box 211<br/>Chagrin Falls, Ohio 44022</p> | <p><b>Mary Jane's Antiques</b><br/>Mary Jane Humes</p> <p>2653 Burgener Dr., Decatur, IL 62521<br/>Glass: Cambridge, Fostoria,<br/>New Martinsville, Duncan Miller,<br/>Imperial and Early Pressed<br/>mjhumes@aol.com 217-422-5453</p> |
| <p><b>THE GLASS URN</b></p> <p>456 West Main Street, Suite G<br/>Mesa, AZ 85201 480-833-2702<br/>480-838-5936</p> <p>Mail Order Shows Open Shop<br/>CAMBRIDGE, FOSTORIA, HEISEY, ETC.</p>                                                                                                     | <p><b>Mother Drucker's</b><br/>Penny Drucker</p> <p>Specializing in Elegant Glassware<br/>Shows and Mail Order</p> <p>P.O. Box 50261 Phone: 949-551-5529<br/>Irvine, CA 92619 888-MDRUCKER<br/>Website: <a href="http://motherdruckers.com">http://motherdruckers.com</a></p>                                                                                                                                                                                                                                                                              | <p><b>GATEWAY ANTIQUE MALL, INC.</b><br/>JUST NW OF MINNEAPOLIS-ST. PAUL, MN<br/>Next to Super 8 in Rogers, MN<br/>(I-94/101 Intersection)</p> <p>85 Dealers 7 Days, 10-6 612-428-8286<br/>ELAINE STORCK, OWNER/DIRECTOR</p>            |
| <p><b>THE DEGENHART PAPERWEIGHT<br/>AND GLASS MUSEUM, INC.</b></p> <p>P.O. Box 186<br/>Cambridge, Ohio 43725-0186<br/>Intersection of US 22 &amp; I 77<br/>Phone 740-432-2626</p>                                                                                                             | <p><b>JUDY'S ANTIQUES</b><br/>Judy Bennett</p> <p>422 S. Ninth Street (Corner of Jefferson)<br/>Cambridge, Ohio 43725<br/>Bus. 740-432-5855<br/>Res. 740-432-3045</p> <p>CAMBRIDGE GLASS MY SPECIALTY</p>                                                                                                                                                                                                                                                                                                                                                  | <p><b>JAMESTOWN ANTIQUES</b><br/>16 E. Washington St., Jamestown, OH 45335<br/>Rosepoint and Cambridge our Specialty</p> <p>Buy (937) 675-6491 Sell<br/>Susan and Larry Everett</p>                                                     |
| <p><b>THE GLASS CUPBOARD</b></p> <p>P.O. Box 652<br/>West End, North Carolina 27376</p> <p>Marcia Ellis Cambridge Show<br/>910-673-2884 and Mail Order</p>                                                                                                                                    | <p><b>GREEN ACRES FARM</b></p> <p>2678 Hazelton Etna Rd., Pataskala, OH 43062<br/>(State Route 310 North)</p> <p>Sat &amp; Sun 1-7 PM 740-927-1882<br/>Antiques, Crystal Glass and Collectibles</p>                                                                                                                                                                                                                                                                                                                                                        | <p><b>Horse'n Around Antiques</b><br/>Kelvin and Heather Moore</p> <p>Exit 69 on Interstate 64<br/>Woodlawn, IL 62898<br/>e-mail: hmoore@midwest.net<br/>TEL: 618-735-9114</p> <p>Specializing in Cambridge and other Elegant Glass</p> |
| <p><b>FINDER'S ANTIQUE HOUSE</b></p> <p>3769 Highway 29 North<br/>Danville, VA 24540<br/>(804) 836-6782<br/>Cambridge-Heisey-Duncan-Fostoria</p>                                                                                                                                              | <p><b>CRYSTAL LADY</b></p> <p>1817 Vinton St., Omaha, NE 68108</p> <p>Bill, Joann, and Marcie Hagerty</p> <p>Bus. 402-341-0643 Res. 402-391-6730<br/>Specializing in Elegant Glass &amp; Collectibles</p>                                                                                                                                                                                                                                                                                                                                                  | <p><b>YOU CAN ADVERTISE YOUR<br/>ANTIQUe SHOP HERE!</b></p>                                                                                                                                                                             |
| <p><b>YOU CAN ADVERTISE YOUR<br/>ANTIQUe SHOP HERE!</b></p>                                                                                                                                                                                                                                   | <p><b>YOU CAN ADVERTISE YOUR<br/>ANTIQUe SHOP HERE!</b></p>                                                                                                                                                                                                                                                                                                                                                                                                                                                                                                | <p><b>PENNY COURT MALL</b><br/>637 Wheeling Avenue<br/>Cambridge, Ohio<br/>100 Booths 15,000 sq. ft.<br/>HOURS: Daily 10-6 Sunday Noon-5<br/>Closed: Easter, Thanksgiving, Christmas<br/>Call for Other Holiday Hours 740-432-4369</p>  |
| <p>Mon thru Sat 10-5:30<br/>Sunday 12-5:30</p> <p><b>Bogart's Antiques</b><br/>BUY—SELL—APPRAISE—REFINISH<br/>CANE &amp; REED CHAIRS—CLOCK REPAIR</p> <p>Jack &amp; Sharon Bogart St Rte 40<br/>740-872-3514 Shop 7527 East Pike<br/>740-826-7439 Home Norwich, Ohio 43767</p>                | <p><b>ALADDIN LAMP BOOKS</b><br/>Free List<br/>Figurine Lamps Wanted<br/>Bill &amp; Treva Courter</p> <p>3935 Kelley Rd Kevil, KY 42053<br/>Phone 270-488-2116 FAX 270-488-2055</p>                                                                                                                                                                                                                                                                                                                                                                        | <p><b>MARGARET LANE ANTIQUES</b></p> <p>2 E. Main St., New Concord, OH 43762<br/>Lynn Welker 740-826-7414</p> <p>Cambridge Glass Matching Service<br/>Hours Mon-Fri 10-12 AM, 1-5 PM or by Appointment</p>                              |
| <p><b>ISAACS ANTIQUES</b><br/>(740) 826-4015</p> <p>See our booths in Penny Court Mall in Cambridge<br/>and White Pillars Antique Mall at Rt. 40, one mile<br/>west of I-70 Norwich Exit #164</p>                                                                                             | <p><b>DEXTER CITY ANTIQUE MALL</b></p> <p>P. O. Box 70, Dexter City, Ohio 45727<br/>(740) 783-5921</p> <p>Located on Ohio St. Rt. 821<br/>Between Exits 16 &amp; 25 off I-77<br/>Just 30 min. South of Cambridge, Ohio</p>                                                                                                                                                                                                                                                                                                                                 |                                                                                                                                                                                                                                         |

## Cambridge Projects

by Bill Hagerty

As of March 1, 2002, NCC has only 99 pairs of the Red Ruby Scottie Dog bookends to sell to support the new Museum. Only 388 pairs were made which makes them a limited edition. So if you are interested in donating, here is a chance to pick up a nice item with your donation.

This is a chance for you to get a donation made to NCC.

We also have pairs of salt and pepper tops available.

Watch for new items coming available. The NCC Board approved on March 1, 2002, a new Caprice Tumbler in the Jadite color, which will be sold for \$20 each.

More on this to come as they are made!

|              |                                                                                                                                                                                                   |                                                                                                                                                                                                                              |
|--------------|---------------------------------------------------------------------------------------------------------------------------------------------------------------------------------------------------|------------------------------------------------------------------------------------------------------------------------------------------------------------------------------------------------------------------------------|
| SENECA       | MORGANTOWN                                                                                                                                                                                        | BEAUMONT                                                                                                                                                                                                                     |
| TIFFIN       |  <b>Old Morgantown Glass</b>  | CAMBRIDGE                                                                                                                                                                                                                    |
|              | <i>13th Annual Convention</i>                                                                                                                                                                     |                                                                                                                                                                                                                              |
|              | <b>Show and Sale</b>                                                                                                                                                                              |                                                                                                                                                                                                                              |
|              | <i>Featuring "Morgantown" &amp; Other Glassware of A Bye-Gone Era</i>                                                                                                                             |                                                                                                                                                                                                                              |
|              | <b>June 7, 8, &amp; 9, 2002</b>                                                                                                                                                                   |                                                                                                                                                                                                                              |
|              | <b>St. Mary's Peace Hall, Star City</b>                                                                                                                                                           |                                                                                                                                                                                                                              |
|              | <b>3344 University Ave.</b>                                                                                                                                                                       |                                                                                                                                                                                                                              |
|              | <b>Morgantown, West Virginia</b>                                                                                                                                                                  |                                                                                                                                                                                                                              |
|              | (I-79 Exit 155 1 mile)                                                                                                                                                                            |                                                                                                                                                                                                                              |
| FOSTORIA     | <b>Friday</b>                                                                                                                                                                                     | 6 pm -9 pm- Premier Show & Sale<br>\$10.00 Special Admission                                                                                                                                                                 |
| WESTMORELAND | <b>Saturday</b>                                                                                                                                                                                   | 10 am - 5 pm- Show & Sale<br>10 am - 12 pm- Former Workers Reception<br>1 pm - Educational Seminar<br>6:30 pm - Convention Banquet*<br><i>*Advance Reservations Requested at</i><br>P. O. Box 894, Morgantown, WV 26507-0894 |
| FRY          | <b>Sunday</b>                                                                                                                                                                                     | 12 noon - 4 pm - Show & Sale                                                                                                                                                                                                 |
|              | <b>Dealer Inquiries:</b> Jim Leasure, (724) 225-8445                                                                                                                                              |                                                                                                                                                                                                                              |
|              | \$3.00 General Admission (Good Sat. & Sun.)<br><i>Public Invited To All Events • Parking At Door</i>                                                                                              |                                                                                                                                                                                                                              |
|              | <a href="http://www.oldmorgantown.org">www.oldmorgantown.org</a>                                                                                                                                  |                                                                                                                                                                                                                              |
| PHOENIX      | CONSOLIDATED                                                                                                                                                                                      | LOUIE                                                                                                                                                                                                                        |

**National Cambridge Collectors Inc**  
**PO Box 416**  
**Cambridge OH 43725-0416**

<http://www.cambridgeglass.org>  
e-mail: [NCC\\_CrystalBall@yahoo.com](mailto:NCC_CrystalBall@yahoo.com)

FIRST CLASS MAIL  
U.S. POSTAGE  
PAID  
PERMIT NO. 3  
CUMBERLAND, OH 43732

# FIRST CLASS MAIL

*Membership Renewal Notice*

**If the date on your address label is 4-2002,**  
**this is your LAST ISSUE of the Crystal Ball.**  
Please take a moment and renew now. Thank you!