

Cambridge Crystal Ball

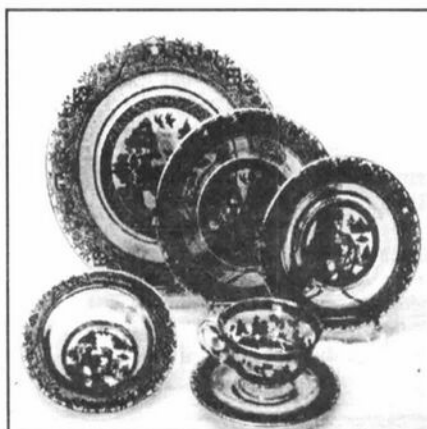


Published Monthly by National Cambridge Collectors, Inc.
to encourage and report the discovery of the elegant and boundless product of the
Cambridge Glass Company of Cambridge, Ohio

Issue No. 357

January 2003

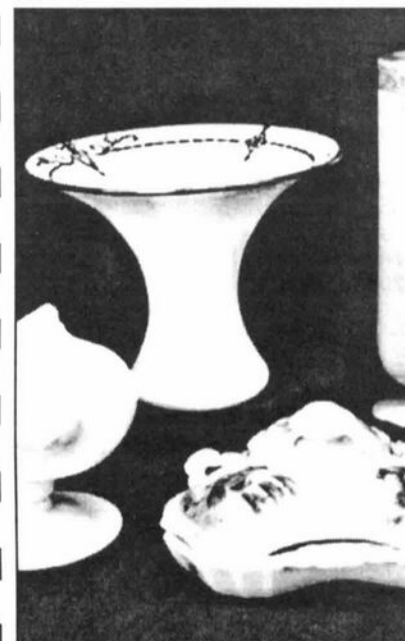
Auction Action



Yes, auction time is drawing near. Inside these pages, the much anticipated 2003 All-Cambridge Auction List. As always, there will surely be something for every collector... or at least something worth coveting!

In next month's issue, we'll be giving you a delicious preview of the auction, but for now, consider these photos and study the list, and get ready to stake a claim on your newest Cambridge treasures!

**Inside:
The 2003
Cambridge Glass
Auction List**



National Cambridge Collectors, Inc.

PO Box 416
Cambridge, OH 43725-0416

Please notify us immediately of any address change.

Contacts:

President Rick Jones (914) 631-1656
Secretary Ken Filippini (201) 670-0990
Crystal Ball Editor Alex Citron (434) 296-2531

NCC Museum (phone) (740) 432-4245
(fax) (740) 439-9223

Membership

Membership is available for individuals at \$20.00 per year, and an additional \$3.00 for associate members (12 years of age and older, residing in the same household). Of the \$20.00 dues, \$14.00 is considered the cost of a one-year subscription to The Cambridge Crystal Ball. All members have voting rights, but only one issue of The Crystal Ball will be mailed to each member household.

Multi-year memberships are available:
2 years for \$38.00; 3 years for \$56.00.

2002-2003 OFFICERS AND COMMITTEE CHAIRS

President	Richard D. Jones
Vice-President	Tarzan Deel, Jr.
Secretary	Ken Filippini
Treasurer	Dennis Snyder
Sergeant-at-Arms	Charles Upton
Corresponding Secretary	Mark A. Nye

.....

Acquisitions	Lynn Welker
Archives	Mark A. Nye
Budget & Finance	Mike Strebler
By-Laws	Alex Citron
Endowment	George Stamper
Facilities	Carl Beynon
	Joe Miller
Grants & Fundraising	Sharon Miller
Long-Range Planning	Mike Strebler
Member Services	George Stamper
Membership	VACANT
Mentoring Program	Judy Rhodes
	Ken Rhodes
Museum	Cindy Arent
Nominating	Tarzan Deel, Jr.
Program	David Ray
Projects	Bill Hagerty
Publications	Mark A. Nye
Publicity	Lorraine Weinman
Study Group Advisor	Ken Filippini
Technology	Linda Roberts
Webmaster	Linda Roberts
2003 Auction	Dorothy Rieker
	Squeek Rieker
	Lynn Welker
2003 Convention	Shelley Cole Citron
	Georgia Otten
2003 Glass Show & Sale	Mary Beth Hackett
	Joy McFadden
2003 Glass Dash	Larry Everett
	Susan Everett

Board of Directors:

Cindy Arent; Tarzan Deel, Jr.; Larry Everett; Ken Filippini;
Rick Jones; Sharon Miller; Dennis Snyder; George Stamper;
Mike Strebler; Charles Upton; Lorraine Weinman; Lynn Welker

Cambridge Crystal Ball

The official publication of National Cambridge Collectors, Inc., a non-profit corporation with tax-exempt status. Published monthly for the benefit of its members. All rights reserved; reproduction in whole or part without written permission of National Cambridge Collectors, Inc., and the author is prohibited.

Executive Editor

Alex P. Citron

Research Editor

Les Hansen

Advertising Manager

VACANT

Circulation

Sharon & Joe Miller

Advertising Rates

Display Advertising (camera-ready):

Full Page	\$50.00
3/4 Page	\$40.00
1/2 Page	\$30.00
1/4 Page	\$20.00
1/8 Page	\$15.00

(Add \$5.00 for each photograph)

Classified Advertising:

10 cents per word; \$2.00 minimum
(Abbreviations and initials count as words)

Dealer Directory:

\$24.00 for twelve-month contract
Text limited by standard box size (see page 19)
Includes FREE listing on NCC website

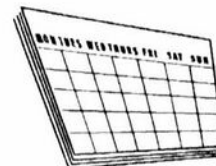
- Payment in full must be received before advertising will be run.
- Cambridge Crystal Ball and National Cambridge Collectors, Inc., assumes no responsibility for items advertised and will not be responsible for errors in price, description or other information.
- Advertising copy is due no later than the 10th of preceding month for publication.

Submissions to The Crystal Ball

By mail: P.O. Box 416 Cambridge, OH 43725
E-mail: NCCcrystalball@aol.com

Deadline: 10th of preceding month

NCC Calendar Upcoming Events...

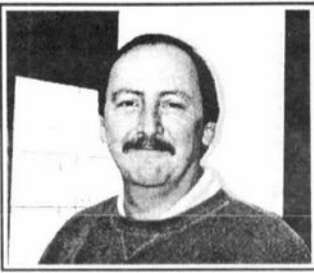


February 28 & March 1, 2003

Cambridge Auction and Quarterly Meeting
Pritchard-Laughlin Civic Center - Cambridge
Quarterly Meeting: Friday, 2/28 at 7:00 p.m.
Auction Preview: Saturday, 3/1 at 9:00 a.m.
Auction Starts: Saturday, 3/1 at 10:00 a.m.

June 26-28, 2003

NCC Annual Convention, Glass Show & Sale
Pritchard-Laughlin Civic Center - Cambridge



President's Message

So, What's Wrong With Optimism?

We've hit the turn of another year and wow this one went fast. Our country spent time trying to return to some degree of normalcy while dealing with ongoing new levels of tension in life, including a worsening economy. It sure hasn't been easy.

In Cambridge land though, we did have a wonderful occasion to celebrate the opening of our new Museum of Cambridge Glass. What a glorious event and what a tremendous accomplishment for our organization. So many people contributed to this process in so many ways. It was a collective challenge and a collective accomplishment.

With that noteworthy event behind us, I hear people say we have no further vision. Nothing could be further from the truth. We have a lot of unfinished business. These are some major goals for 2003 and beyond ...

Build our membership in both size and in degree of satisfaction.

Create a solid organizational structure that builds a good platform for perpetuation of the organization, including succession planning and harnessing the multitude of talents within the club.

Extend our outreach - making our education platform an even better national success and start thinking "internationally" via the web.

Continue the process of finishing our first class museum. The work is not done. Our research and archivist areas are high priorities for finishing, furnishing and functioning.

Create a plan for liquidating the mortgage on our museum building. It stands at just over \$70,000 now. Build a truly functional plan for our Endowment Fund, a vital part of our long-term survivability. This must include a major commitment, with compassion, to a wills and bequests program so that the members can remember the club. This plan is presently being worked on by George Stamper and he welcomes input from members on how best to build this long-range plan.

Integrate all the new committee chairs. We had a lot of turnover this year as fresh people took on new challenges. This is not an easy thing to do and there were some "large shoes" to fill. Can we accomplish this goal of keeping people "fresh" without too many interruptions of club functions that members come to expect?

How do we continue to reach out to other glass clubs and share common issues and opportunities? Can we finally realize one of my long-term goals of holding a quarterly meeting at a location outside of Cambridge? An NDGA (National Depression Glass Association) convention would seem like an ideal place to meet someplace new every year.

Continue to update our club's early research to insure its accuracy. We are looking at revising research that may have been published in early Crystal Balls that is now out-of-date and/or inaccurate based on subsequent learning.

Add more educational content to the Crystal Ball and dramatically boost the number of contributors. Les Hansen and Alex Citron are hard at work on this.

Whew. Pause. Catch a breath.

That's a lot for an organization to set out to do, particularly one with just about 1300 members.

But you know what? That's just what we have been doing for the last half dozen years or so as we rebuilt our initial financial systems and set on the process of completing a new museum after a devastating flood.

The way we get there is by mobilizing talented people who share a common passion. If we succeed, WE ALL WIN.

A new year is a wonderful time to take a fresh look at what we have done, what we have yet to do and what we have yet to think about. I am surrounded by a very talented Board of Directors, Committee Chairs, Committee members and Study Group members. It is impressive what they have been able to accomplish.

We are at a great juncture where we can mobilize in a very organized and non-frenetic way to plot this next stage of

our organization's growth. Many other clubs have challenges much more grave than ours. We are really in very good shape but there are certainly things we can do better. And, there have been many missteps along the way.

I was recently asked by someone not to put such a cheery spin on things. It was a thoughtful comment that I gave much attention to. The conclusion I came to was "I can't do that." My basic instinct is to focus on optimism and a can-do attitude. Time and time again, it has been proven that an optimistic attitude leads to greater productivity.

The Rev. Norman Vincent Peale (an Ohio Wesleyan grad!!!) wrote *The Power of Positive Thinking* fifty years ago this year. I know that for a fact, because his Guideposts Magazine is my company's biggest client. What is interesting now is that Rev. Peale's beliefs have now been proven by science. A belief that *you can make a difference* helps guide people toward success.

This should never be a "sugar-coat" for realism, but if "tempered reality" is coupled with smart purpose and positive commitment, organizations can do great things. I think that has helped guide our recent successes and will be the cornerstone to our continued progress.

I'm happy to be along for the ride!

Happy New Year to all.

*In Next Month's
Crystal Ball*

2003 Auction Preview
...
NCC By-laws
...
The Harrisburg Show
...
**Cambridge Colors:
Crown Tuscan**

National Cambridge Collectors, Inc.

Minutes of the Quarterly Meeting of November 2, 2002

President Rick Jones called the quarterly meeting of the National Cambridge Collectors Inc. to order at 7:10 PM on November 2, 2002 at the Holiday Inn in Cambridge Ohio. Rick introduced Bill and Shirley Reitz of Green Oaks, Illinois, who were attending their first November meeting. Rick thought it might be a nice idea if the assembled group would in turn, stand, reintroduce themselves and mention where they had traveled from to be present at the quarterly meeting. After all introductions were done, a motion was made by Mark Nye and seconded by Georgia Otten to dispense with the reading of the minutes of the August, 2002 quarterly meeting. The motion carried and the minutes were approved as published in the Crystal Ball.

Treasurer's Report – Dennis Snyder reported that as of September 30, 2002 NCC has \$110,974 in secured accounts. The breakdown is \$21,771 in the Endowment Account, \$26,635 in the Century Club account, and \$62,568 in the Operating Account. Dennis reported that as of September 30, 2002 NCC was at a break-even point, even with the club's very aggressive pay down of the museum mortgage, which now stands at \$76,000 (down from its original \$125,000). Dennis then explained that NCC was in negotiations with our bank to lower our mortgage rate while potentially transferring our club's assets which are presently at Edward Jones.

Committee Reports

Acquisitions – Lynn Welker reported on the status of the Sample Room Glass purchase from the Bellaire Glass and Artifacts Museum. He said that some of the nicest pieces have already been catalogued and added to the glass display in the museum.

Lynn said there had been many questions on how pieces from this

collection are being "de-acquisitioned." Only pieces that duplicate those owned by NCC can be considered for sale. If two exact pieces exist, the one with the most labels will be kept. Lynn said the about 25 duplicate pieces from this acquisition would be available at this year's NCC auction. Lynn then said that the only duplicate items that would be sold at the Museum Gift Shop would be minor, very inexpensive items (mainly \$10-\$12 each, maybe stained, maybe minor damage, and no label attached.)

Budget/Finance – Dennis Snyder covered all pertinent items under Treasurer's Report as Committee Chair Mike Strebler was not present.

By-Laws – Bud Walker was not present.

Endowments – George Stamper had no report. Rick Jones thanked George for all the hard work he has been doing on the Long-Range Plan for the Endowment Fund.

Facilities – Carl Beynon reported that he had received an estimate of \$33,000 to remove the two existing roofs, fully insulate, and install a new roof on the NCC Museum. Further, these suppliers told Carl that the existing roof has the possibility of lasting between 1 ½ to 2 years before needing to be replaced. Great news!

Grants/Fund Raising - In Sharon Miller's absence, Rick Jones reported that the Board passed a motion stating that as of December 31, 2002, 50% of all Century Club Funds will be dedicated to the Endowment Fund. Rick said that the focus for year two of the Century Club will most likely be for the Museum Roof Fund. Tarzan Deel reminded us that since the Century Club Fund stood at \$26,000 it was not likely that the \$50,000 goal for the matching grant was going to be reached.

Member Services – George Stamper reminded the membership that if they have an interest in helping NCC in any way, please let him know.

Rick reported that NCC is having wonderful visibility at glass shows around the country. Alex and Shelley Citron will be setting up at Annandale, Virginia on November 9th and 10th. Freeman and Jeannie Moore did two shows in Texas recently with one more to come. Fleur de Lys Healy did a display in Sanford, Florida in September. The Elegant Glass Study group will be doing their bi-annual display in Harrisburg, Pennsylvania on November 22nd, 23rd and 24th. Rick said that Ken Filippini set up a fabulous Statuesque display at the Great Northeast Show in August. Rick concluded that this visibility has been hugely successful both in sales of books, and in gaining new members for NCC.

Membership – Rick Jones reported the NCC was once again in need of a new Membership chair, as Larry Everett has declined to serve in this position. Rick thanked Jeff Ross for his willingness to continue as Chair until a viable replacement can be found.

Jeff reported that total membership was 1281, consisting of:

Master Members – 896
Associate – 375
Honorary – 6
Lifetime – 4

This is an increase from last year's total of 1259. Jeff felt the new Museum and the visibility at glass shows were the main contributors.

Museum – Cindy Arent reported that the museum was now closed for the year. The guest register had 1320 signatures this year. Cindy said that on October 25th, Dean Six lead a 65 person tour group to the museum and that Lynn Welker took half the group

November Minutes (continued)

at a time on a tour of the glass cases. Cindy thanked Joy McFadden and Mary Beth Hackett for donating a lovely bench for the ladies' powder room. Cindy also thanked Rick and Cindy Jones for their fabulous display of Caprice which was this year's display in the Rotating Display Room. She asked if anyone was interested in filling the spot next year, please contact her. Cindy said that new NCC logo pins were on sale at the Museum. Dennis Snyder added that the total admissions to the Museum, as of September 30, 2002 grossed \$1,891.

Nominating Committee – Tarzan Deel reported that the three members whose term will be up for election this year were: Lynn Welker, Sharon Miller and Bud Walker. Tarzan said that he is seeking members for the nominating committee.

Non-Glass – Rick indicated that Mark Nye has been named Archivist. Mark reported on how much progress had already been accomplished at the Paper Room in the Storage Building. Mark made a plea to anyone who might have some of the missing paper from the Cambridge Glass Co. vault to either return it or let NCC have access to this paper, no questions asked.

Programs – David Ray thanked everyone for bringing glass for the Barware program. David requested suggestions for next year's November program and asked anyone with an idea to contact him.

Publications – Mark Nye – No report.

Publicity – In Lorraine Weinman's absence, Cindy Arent reported that thanks to Alex Citron, the Museum brochure would be available in about four weeks. Cindy spoke about a new Glass Partnership Project between Licking County and Guernsey County. The first joint project is called Glass Pass, which will be available at the Visitors Convention Bureau: a coupon good for entry at the NCC

Museum, the Bennett Museum, the Degenhart Museum, and the Heisey Museum. Cindy said the details would be worked out at the next joint partnership meeting.

Study Groups - Ken Filippini reported on the infusion of 10 new members into the Elegant Glass Study Group, and the election of Jane Filippini as new group president. Ken said that a new group in Florida, headed by Linda Gilbert, would most likely get its start after the first of the year. Ken also said that another new group in the Canton Ohio area, spearheaded by Hildi Pfouts, would also make an appearance sometime in January. Ken then thanked Ron Kotlarz for his very professional videotape of the Grand Opening Party for the NCC Museum. Those interested will be able to view this tape at the museum and copies will be made available for sale.

Technology/Web – Linda Roberts reported that the website continues to be strong, receiving between 6000-8000 hits per month. Linda said that perhaps the listing of Study Group reports on the Web would generate additional interest in NCC.

2003 Convention – Rick introduced the new Convention chairs Georgia Otten and Shelley Cole Citron. Georgia began by saying that 2003 was a hugely important date in Ohio history. It marks 200 years of statehood. Since there would be big goings on, get your reservations for convention ASAP. Georgia reported that she and Shelley were in the early stages of planning, and said that they would be calling on the membership for help making the convention a special occasion.

2003 Auction – Lynn Welker reported that most of the glass for the auction was in and if anyone still had some to please get it in as quickly as possible as Dorothy and Squeek Rieker were planning to do the cataloging on the weekend of November 12th. Lynn said that there

were 390 lots, that the auction list would appear in the January Crystal Ball, and by all appearances the quality would surpass last year's.

2003 Glass Show – Rick reported that Mary Beth Hackett and Joy McFadden are being invited to continue their excellent work as Show Chairs. Rick said that along with this a new position, Events Chairman, would be taken on by Ken Filippini. This position has been created to help facilitate and be a conduit between all revenue-producing events chairpeople (auction, glass show, etc.) and the Board with the overall goal being to enhance membership experience and help with the cash flow position of NCC.

2003 Glass Dash – Larry and Susan Everett – Not present

Crystal Ball – Alex Citron reported that the first issue under his stewardship as new Crystal Ball editor would be in the mail by November 7, 2002. Alex thanked Lorraine Weinman for the smooth transition. Alex said that when you receive your issue you would notice that the newsletter has a new contemporary look and a change in format. Alex introduced Les Hansen as the new Research Editor, and said that Les would be soliciting the membership for contributions. Alex also said that three other members of the staff, Events Editor, Verification Editor and Advertising Manager, would soon be on board. Alex spoke about the possible further introduction of color, and the beginning of getting the newsletter delivered electronically, via the Web.

Old Business – None

New Business – Tony Dahnk read a statement on behalf of Bud Walker. The statement was a letter of resignation from the NCC Board of Directors by Bud Walker, who felt he

Continued on page 15

Study Groups

The NCC has several study groups; these are the groups currently active and holding regular meetings. Listed below is contact information for these study groups.

If there is no study group in your area and you are interested in starting or joining a new study group, please contact the Crystal Ball or call NCC Study Group Advisor Ken Filippini at (201) 670-0990.

#13 - Miami Valley Study Club
Miami Valley area, Ohio
Larry Everett
db0098@dragonbbs.com
(937) 675-6491

#14 - The Cambridge Cordials
Cambridge, Ohio
Lorraine Weinman
blweinman@hotmail.com
(330) 966-9376

#15 - North Texas Cambridge Study Group
Dallas area, Texas
Scott Pierce
scottpierce1@msn.com
(817) 427-9510

#16 - Elegant Glass Collectors
PA & NJ
Bill Dufft
billnvon@aol.com

#17 - The Columbus Wildflowers
Columbus, Ohio
Barbara Wyrick
bwyr@ee.net
(614) 291-0361

#18 - The Cambridge Triangles
VA, MD, DC
Alex Citron
apcpenguin@aol.com
(434) 296-2531

New Study Groups are currently being organized in the Canton area of Ohio, in Colorado, in southern Michigan and in south Florida. For more information, call Ken Filippini at (201) 670-0990.

WANTS

WANTED: Cover for #3011
Crown Tuscan Nude Stem
Cigarette Box

Carlene Hafer
98 Dunkleberger Road
Williamsport, Pa. 17701
chafer@chilitech.net

MEMBERS ONLY

Visit the "Members Only" section of the NCC's website at

cambridgeglass.org/NCCmembers

Features available only to NCC Members include:

Reprints of Research Articles
Minutes of Board Meetings

User name: NCC
Password: TriangleC

New Video Available

Grand Opening
of the
National Museum
of Cambridge Glass

See page 18 to order

Attention:

Colorado Members

What do Denver, Colorado and Cambridge Glass have in common? Not much at the moment, but we'd like to start an NCC Study Group to see what connections we can make. If you have an interest, call Sandy Mazarakis at 303-423-8923.

South Florida Depression Glass Club 29th Annual Show & Sale

February 1 & 2, 2003

War Memorial Auditorium
800 N.E. 8th Street
Ft. Lauderdale, FL

Early Buyers Preview Sat. 9 -10 AM
Saturday 10 AM -5 PM
Sunday 10 AM -4 PM

Regular Admission: \$5.00
Preview Admission: \$10.00
(50¢ off with this card)

Directions:

Rt. 95 to Sunrise Blvd. East,
turn South on US 1 for 2 blocks

Information:

954-985-1120
trainmon@bellsouth.net



Snack Bar - Door Prizes

National Cambridge Collectors, Inc.

2003 Benefit Auction

Saturday, March 1, 2003

Pritchard-Laughlin Civic Center • US 40, West • Cambridge, Ohio

INFORMATION

Preview at 9:00 a.m.

Auction starts at 10:00 a.m.

Craig Connelly, Auctioneer

Admission: \$2.00

All glass in the auction is guaranteed to be Cambridge. The Auction Committee has checked all glass carefully for verification and damage. Any piece purchased should be examined immediately by the purchaser, and returned within five items if not as represented. All damages are indicated in this catalog; last minute changes or addenda will be announced by the Auction Committee immediately prior to the auction. If no color is indicated herein, the item is crystal.

TERMS: Payment is expected in cash the day of the sale; checks will be accepted with proper identification. All sales are subject to 6.5% Ohio Sales Tax. Dealers may sign a tax exemption form if items are purchased for resale.

CATALOG: Lots will be sold in the order printed herein. A number in parenthesis () at the end of a listing indicates the number of that item available for sale. The auctioneer will announce whether such multiples are being sold individually or as a lot. If multiple items are being sold individually, a winning bidder may take any number available. If the catalog indicates "set," "pair" or a similar term, the lot is sold as such. Lots indicated by an asterisk (*) and bold type are donated items; the entire purchase price for these lots goes to the NCC Museum.

MAIL BIDS: All absentee bids must be accompanied by a separate check for the maximum bid on each lot. Checks are to be made payable to: National Cambridge Collectors, Inc. Bids will be executed secretly and a winning bidder will pay only the final auction price. Refunds for bid overages will be sent to bidders immediately after the auction. If you are not successful, you will be notified by mail and your check(s) returned to you. All absentee bids must be accompanied by a stamped, self-addressed envelope. Please include 6.5% Ohio Sales Tax or your vendor's resale number.

SHIPPING: Absentee bidders who wish their items shipped may include a blank check for shipping charges, or may call (740) 453-6403 or (614) 777-8064 within a few days after the auction to make shipping arrangements. Items can be shipped to street addresses only; NO P.O. BOXES.

MAILING ADDRESS: All absentee bids must be mailed to:

Lynn Welker
2 East Main Street
New Concord, OH 43762

**BIDS MUST BE RECEIVED BY
THURSDAY, FEBRUARY 27TH TO BE ELIGIBLE.**

MOTEL RESERVATIONS: See page 20 of this issue (back cover) for a listing of motels in Cambridge. Please be aware that the special Convention Rates quoted there are not in effect for the auction; rates may be higher.

QUARTERLY MEETING: The Quarterly Meeting of the NCC will be held on Friday, February 28 at 7:30 p.m. A preview of the auction glass will be presented. Show & Tell glass is welcome at the meeting.



Additional copies of this catalog are \$1, postpaid or are included with admission to the auction.

- 1 _____ #3400/10 Ebony Decagon 11" Center-Handled Sandwich Tray
- 2 _____ #499 Emerald Green Pristine 6-1/2" Calla Lily Candlesticks (pair)
- 3 _____ Madeira Honeycomb Covered Candy Jar
- 4 _____ #1040 Crystal 3" Swan, Style II, signed
- 5 _____ #1807 Rubina Candy Jar (no lid), Excellent Color
- 6 _____ #2 Crystal 4" Star Candleholders (4)
- 7 _____ #3400/38 Peach-Blo 80-oz. Ball Jug with Crystal Handle
- 8 _____ #7606 Crystal 12-oz. Tumblers, Etch Marjorie (4)
- 9 _____ #1448 Forest Green Aero-Optic 10" Vase
- 10 _____ #3105 Crystal Pressed Rosepoint 9-oz. Goblet
- 11 _____ #91 Primrose 10" Stick Vase
- 12 _____ #109 Amber Mt. Vernon 9-1/2" Dolphin Candlesticks (pair)
- 13 _____ #1236 Royal Blue 8" Ivy Ball, Crystal Keyhole Stem & Foot
- 14 _____ #497 Smoke Gyro-Optic 6-oz. Ranch Tumblers (6), Unusual
- 15 _____ #3797/103 Crystal Cambridge Square 11" Celery
- 16 _____ #390 Crown Tuscan 7" Round Ashtray
- 17 _____ #1624/1625 Crystal Mt. Vernon 3-1/2" Ashtray and Cigarette Lighter (set), Unusual
- 18 _____ #3400/4 Carmen 12" 4-Footed Flared Bowl & #647 Carmen 6" 2-Lite Keyhole Candlesticks (pair)
- 19 _____ #1563 Crystal Cambridge Arms, 4-Candle Arm (2)
- 20 _____ #3790 Moonlight Blue Simplicity Goblet, Engraved Danube, Cambridge label, Rare
- 21 _____ #1630 Lt. Emerald 12-oz. Tumblers, Etch Chrysanthemum (2)
- 22 _____ #993 Crystal 12" 4-Footed Bowl, Engraved King Edward
- 23 _____ Crystal Jenny Lind 8-1/2" Oval Basket, Cambridge label, Hard To Find
- 24 _____ #3011/9 Ebony Stem 3-oz. Nude Cocktails, Crystal Bowl & Foot (2), 1 with Cambridge label
- 25 _____ #3011 Crystal 7" Nude Cupped Comport
- 26 _____ #3011/9 Pistachio 3-oz. Nude Cocktail
- 27 _____ #3400/7 Crystal 5-1/2" Cheese Comport, Gold Encrusted Elaine Etch (slight gold wear)
- 28 _____ #198 Amber Perfumes with Complete Dauber Stoppers (2)
- 29 _____ #12 Helio 10-1/2" Bowl, Iridized Band & Gold "Seaweed" Decoration (decor is worn)
- 30 _____ #518 Crystal 8-1/2" Draped Lady Figure Flower Holder
- 31 _____ #152 Crystal Marmalade and Cover, Etch #3 (Rearing Horse, also known as E525), Unusual
- 32 _____ #478/479/488 Crystal Cascade 15" Punch Bowl, 21" Underplate, & (12) 5-oz. Punch Cups, labels on all
- 33 _____ #1955 Pistachio Crackle 6-oz. Old Fashioned
- 34 _____ #1955 Pink Crackle 6-oz. Old Fashioned, Cambridge label
- 35 _____ #477 Crystal 9-1/2" Corn Dish or Pickle Tray, Etch Wildflower
- 36 _____ #3500/79 Forest Green 3" Footed Favor Basket
- *37 _____ #7606 Crystal 10-oz. Goblet, Etch Marjorie (slight rim roughness)**
- 38 _____ #1297 Crown Tuscan 11" Footed Vase (chip, sharp flange under base)
- 39 _____ Mt. Vernon Original Paper Easel Display Sign
- 40 _____ #3106 Crystal 2-oz. Sherry, Etch Lily-of-the-Valley, Rare
- 41 _____ #7966 Forest Green 6-oz. Saucer Champagne
- 42 _____ Turquoise 5" Gem Plate (1903 Catalog, p. 50), Hard To Find
- 43 _____ #1128 Crystal Scotty Dog Bookend with Satin Finish
- 44 _____ Crystal Footed Refrigerator Jar and Cover, Unusual
- 45 _____ #25 Goldenrod Martha Washington 9-1/2" Bowl, Etch #715 Willow Border, Rare Color
- 46 _____ #1040 Crown Tuscan 3" Swan, Style III
- 47 _____ #1043 Ebony 8-1/2" Swan, Style I, Feather Detail, signed (chip on 1 fin)
- 48 _____ #1401 Heatherbloom Jefferson 10-oz. Goblet, Rare
- 49 _____ W114 Milkglass Seashell 7" Salad Plate
- 50 _____ #842 Lt. Emerald Decagon 12" Bowl, Etch Hunt Scene, signed
- 51 _____ #104 Amber Mt. Vernon 12" 5-Part Celery & Relish
- 52 _____ #1341 Amethyst 1-oz. Cordials (5)
- 53 _____ White Rain Low Sherbet, Rare
- 54 _____ #3797/40 Ebon Cambridge Square Cigarette Urns (2)
- 55 _____ #1138 Crystal Seagull 8-1/2" Figure Flower Holder
- 56 _____ #319 Amethyst 9-oz. Georgian Tumbler (original turncard describing manufacture)
- 57 _____ Rubina Honeycomb 9-1/2" Bowl, signed
- 58 _____ #168 Peach-Blo 10" Center-Handled Sandwich Tray, Etch #732
- 59 _____ #510 Lt. Emerald Temple Jar and Cove

- 60 _____ #3900/136 Crystal 5-1/2" Comport, Etch Diane
- 61 _____ #3400/38 Crystal 80-oz. Ball Jug, Silver Grape Design Overlay
- 62 _____ #3400/91 Crown Tuscan 8" 3-Part Relish
- 63 _____ #309 Odd Emerald Green 4-1/2" Vase
- 64 _____ #88 Amber 1/2-Pound Footed Wide-Optic Candy Jar and Cover
- 65 _____ #1237 Amethyst 10" Keyhole Vase
- 66 _____ SS#10 Crown Tuscan 5" Nude Shell Comport, Charleton Decoration & Gold Trim
- 67 _____ #1206 Royal Blue 76-oz. Twisted-Optic Pitcher (crack in handle)
- 68 _____ SS#34 8-Piece Ashtray Set — (2) Pistachio, (2) Moonlight Blue, (2) LaRosa,
(2) Mocha, 1 with Cambridge label
- 69 _____ #319/B/2 Pistachio Georgian Basket, Cambridge label (crack inside handle)
- 70 _____ #2634 Crystal Fernland NearCut Toy Creamer & Covered Sugar (sugar is rough & has wrong lid)
- 71 _____ #2834 Crystal NearCut 5-1/2" Bottle Horn (slight roughness on edge)
- 72 _____ #2833 Crystal NearCut 5-1/2" Candy Horn with Metal Cover (slight roughness under cover)
- 73 _____ #2660 Crystal Wheat Sheaf NearCut Handled Punch Cups (10), 1 signed
- 74 _____ #2635 Crystal Fernland NearCut 6" Rose Bowl
- 75 _____ #2699 Crystal Buzz Saw NearCut 6" Low Comport, signed
- 76 _____ #2667 Crystal NearCut 4-oz. Bottle with Bail (no stopper), signed
- 77 _____ #2631 Crystal Marjorie NearCut Butter and Cover, signed (minor roughness to 1 point)
- 78 _____ #2760 Crystal Daisy NearCut Archfoot Table Tumblers, signed (3)
- 79 _____ #2760 Crystal Daisy NearCut 4-Footed Mustard Jar and Slotted Cover, signed (large chip under lid)
- 80 _____ #2586 Crystal NearCut Measuring Jug with Glass Funnel Cover, Patent Dates on Lid
(chip under lid)
- 81 _____ SS#11 Crown Tuscan 7" Nude Shell Comport (nude is pitted)
- 82 _____ #3500/15 Crystal Ind. Cream & Sugar, Etch Rosepoint, cream Gold Encrusted,
sugar Gold Stippled (worn)
- *83 _____ #7606 Crystal 6-oz. Tall Sherbets, Etch Marjorie (5)**
- 84 _____ W90 Milkglass Caprice 3-oz. Oil
- 85 _____ Crystal Jenny Lind 8-1/4" Footed Oval Bowl
- 86 _____ #1356 Crystal 7" 2-Lite Candelabra (2 bobeches, no prisms)
- 87 _____ #3122 Heatherbloom 9-oz. Goblet, Etch Diane, Rare
- 88 _____ #3700 Crystal 1-oz. Cordial, Engraved Tempo
- 89 _____ #3750 Crystal 1-oz. Cordial, Engraved Bexley
- 90 _____ #3120 Gold Krystol 1-oz. Cordial
- 91 _____ #3075 Lt. Emerald 1-oz. Cordial
- 92 _____ #3103 Carmen 1-oz. Cordial
- 93 _____ #7966 Crystal 1-oz. Cordial, Incomplete Lily-of-the-Valley Silk Screen
- 94 _____ #3500 Crystal 1-oz. Cordial, Etch Elaine
- 95 _____ #3500/78 Crystal 6" Covered Candy Box, Ram's Head Handles, Etch Diane (several chips on lid)
- 96 _____ SS#15 Windsor Blue Seashell 6" Comport, signed
- 97 _____ #109 Lt. Emerald Mt. Vernon 9-1/2" Dolphin Candlesticks (pair), (1 cracked in top tail)
- 98 _____ #638 Crystal Decagon 3-Lite Keyhole Candlesticks, Unknown Floral Cutting (pair)
- 99 _____ Mulberry 7" Twist Candlesticks (pair), (manufacturing flaw on edge of 1)
- 100 _____ #168 Avocado 10" Center-Handled Sandwich Tray
- 101 _____ #1321 Amber 28-oz. Footed Decanter & (8) #7966 Amber 2-oz. Sherries
- 102 _____ W93 Milkglass Everglade 12-oz. Mug
- 103 _____ #29 Jade 12" Bowl
- 104 _____ Crystal Lifesaver Decanter, Charleton Enamel Ivy Decoration (some gold trim wear)
- 105 _____ #3126 Amethyst 9-oz. Goblets (6), (large rim chip on 1)
- 106 _____ #856 Willow Blue Decagon 11" Flip Bowl, Etch Cleo, signed & #627 Matching 4" Candlesticks (pair)
- 107 _____ #1040 Pink 3" Swan, Style II, signed (large chip on 1 fin)
- 108 _____ #1040 Emerald Green 3" Swan, Style III
- 109 _____ #1042 Crystal 6-1/2" Swans, Style III (2)
- 110 _____ #3011/13 Gold Krystol 1-oz. Nude Brandy
- 111 _____ #3011/13 Emerald Green 1-oz. Nude Brandy
- 112 _____ #3011/13 Amber (Dark) 1-oz. Nude Brandy
- 113 _____ Farber Chrome #5462 Sherbets with Carmen Inserts in Original Box (set of 6), Unusual
- 114 _____ Crystal Jenny Lind 7-3/4" Footed Cupped Bowl, Cambridge label
- 115 _____ #3900/116 Amber Gyro-Optic 80-oz. Ball Jug
- 116 _____ P.569 Carmen Pristine 9" Crimped Vase or Bowl, Cambridge label

- 117 _____ #1338 Crystal Caprice Alpine 6" 3-Lite Candlestick
- 118 _____ #62 Crystal Caprice Alpine 12-1/2" 4-Footed Belled Bowl
- 119 _____ #201 Crystal Caprice 4-Footed Ice Bucket & Tongs (no handle), Cambridge label
- 120 _____ #96 Crystal Caprice Salt & Pepper Shakers with Glass Lids (2 pair), (crack in 1 lid, 2 are stained)
- 121 _____ #52 Crystal Caprice Stick Butter and Cover, Hard To Find
- 122 _____ #647 Moonlight Blue Caprice Alpine 6" 2-Lite Keyhole Candlesticks (pair)
- 123 _____ #70 Moonlight Blue Caprice 7" Candlestick with Prism
- 124 _____ #925 Ebony Round After-Dinner Cup & Saucer, Gold Handle has wear, signed
- 125 _____ #726/731 Crystal Star 5" and 6-1/2" Ashtrays (set)
- 126 _____ #1066 Carmen 2-oz. Sherry, Cut Leaves on Foot, Rare
- 127 _____ #5 Azurite 7-1/4" Bowl, Gold Encrusted #574 Border (gold is redone)
- 128 _____ #1322 Carmen 26-oz. Decanters, Cut Flutes (2), (bruises on 1 stopper)
- 129 _____ #518 Pink 8-1/2" Draped Lady Figure Flower Holders (2), 1 with Cambridge label
- 130 _____ #513 Lt. Emerald 13" Draped Lady Figure Flower Holder on Early Scalloped Base (crack in base)
- 131 _____ #3500/41 Crown Tuscan 10" Covered Urn
- 132 _____ #1206 Amethyst 76-oz. Twisted-Optic Pitcher & (6) Matching 12-oz. Tumblers
- 133 _____ #19 Crystal Bobeche (large opening for hurricane base, 10 pins, no prisms)
- 134 _____ Dark Amber Jenny Lind 8" Footed Flared Bowl, Rare
- 135 _____ #497 Royal Blue 8-oz. Tumblers, Cut Flutes, all signed (4), (large base chips to 2)
- 136 _____ #319 Heatherbloom 9-oz. Georgian Tumbler
- 137 _____ Crystal Perfume with Floral Cut, Original Sterling & Enamel Stopper with Glass Dauber,
Cambridge label
- 138 _____ #3400/90 Gold Krystal 6-1/2" 2-Part 2-Handled Relish, Etch Diane
- 139 _____ #533 Crystal 3-Piece Mayonnaise Set, Gold Encrusted #1 Chintz Etch (gold badly worn)
- 140 _____ #30 Crown Tuscan Seashell 9" 4-Toed 3-Part Relish, Charleton Floral Decoration (trim wear)
- 141 _____ #278 Crystal 11" Footed Vase, Gold Encrusted Woodlily Etch
- 142 _____ SS#42 Amethyst Seashell 8" Footed Flower Center - Snail (scratches, small flake on edge)
- 143 _____ #3011/3 Pink Nude Saucer Champagne, Rare
- 144 _____ Rubina Honeycomb 9-1/2" Bowl, signed (lightly scratched)
- 145 _____ #1528 Mandarin Gold 10" Bud Vase, Engraved Wedding Rings, Cambridge label
- 146 _____ Cambridge Crystal Doorknobs, Original Nickel-Plated Brass Fittings (pair)
- 147 _____ #275 Amber 10" Crimped Vase, Early Wildflower #4 Etch
- 148 _____ #494 Crystal Cups & Saucers, Etch #715 Willow Scene, Blue Enamel Encrusted with Gold Band (2 sets)
- 149 _____ #554 Crystal 7" Plate, Etch #715 Willow Scene, Blue Enamel Encrusted with Gold Band
- 150 _____ #556 Crystal 8" Plate, Etch #715 Willow Scene, Blue Enamel Encrusted with Gold Band
- 151 _____ #244 Crystal 10-1/2" Dinner Plate, Etch #715 Willow Scene, Blue Enamel Encrusted with Gold Band
- 152 _____ #3135 Lt. Emerald 8-oz. Footed Tumblers, Etch Rosalie (4)
- 153 _____ Mulberry 10" 14-Panel Bowl, signed
- 154 _____ W120 Milkglass Dresden Lady Figure
- 155 _____ #7966 Crystal 2-oz. Sherry, Engraved Adonis (rim is polished)
- 156 _____ #7 Crystal Everglade 10-1/2" Footed Bowl, Gold Decorated (gold may not be original)
- 157 _____ #512 Crystal Virginian 6" 2-Lite Candelabra (no bobeches), (pair), (1 has chip on candle cup)
- 158 _____ #440 Moonlight Blue Pristine 10" Star Bowl
- 159 _____ P.502 Crystal Pristine 6" 2-Lite Candlestick, Engraved Neo Classic on Foot
- 160 _____ #1128 Crystal Scotty Dog Bookends (pair—1 solid, 1 hollow)
- 161 _____ #1236 Carmen 8" Ivy Ball, Crystal Keyhole Stem & Foot
- 162 _____ #17 Mocha Caprice Cup & Saucer Sets (2)
- 163 _____ #82 Crystal Caprice 13" 4-Footed Bowl (scratched) & #513 Crystal 13" Draped Lady (large crack in frog)
- 164 _____ #3121 Crystal 7-oz. Tall Sherbets, Wildflower Etch, Gold Trim (6), 5 with Cambridge labels
- 165 _____ #1955 Sunset 3-oz. Tumbler
- 166 _____ #3400/38 Carmen 12-oz. Tumblers, Gold Encrusted Portia Etch (2), Rare
- 167 _____ #3116 Crystal 5-oz. Footed Tumblers, Engraved Lucia (5)
- 168 _____ #3116 Crystal 10-oz. Goblets, Engraved Lucia (2)
- 169 _____ #3400/71 Heatherbloom 3" 4-Toed Nut Cup, signed
- 170 _____ #3400/103 Carmen Aero-Optic 6-1/2" Globe Vase (Amberina effect to optic), Rare
- 171 _____ #2368 Crystal 8" Blown Vase, Etch "Betty" #724
- 172 _____ #1 Emerald Green Muddler
- 173 _____ #1 Mulberry Muddler, Hard To Find
- 174 _____ #3400/5 Amber 12" 4-Footed Flip Bowl, Gold Silk Screen Apple Blossom & #646 Matching
5" 1-Lite Keyhole Candlesticks (pair), (gold trim wear), Unusual

- 175 _____ #3121 Crystal 7-1/2" Candlesticks, One with Bobeche and Prisms (pair)
- 176 _____ #168 Ivory 10" Center-Handled Sandwich Tray
- 177 _____ #69 Ebony 7-1/2" Candlesticks, Mother-of-Pearl Finish, Gold Cattails (slight gold trim wear)
- 178 _____ #175 Amber 8-oz. Syrup and Cover, Applied Handle
- 179 _____ #851 Dark Amber Decagon Ice Bucket, Chrome Handle & Tongs, Etch Hunt Scene, signed
- 180 _____ Crystal Lexington 9"W Comport
- 181 _____ #1371 Crown Tuscan Bridge Hound (chip on back)
- 182 _____ W105 Milkglass Seashell 9" 3-Footed Bowl (large chip under 1 foot)
- 183 _____ #2 White Bird (has hole & damage at beak)
- 184 _____ #1114 Crystal 6" Bashful Charlotte Figure Flower Holder, Ribbed Base
- 185 _____ #3400/92 Carmen 32-oz. Ball Decanter with Crystal Handle (lightly scratched)
- 186 _____ Special Article #95 Ivory 10" 1-Pound Covered Candy Jar (open bubble, several chips under lid)
- 187 _____ Peach-Blo Decagon 20-Piece Luncheon Set; #979 Cream & Sugar, #865 Cups & Saucers, and
#597 8-1/2" Salad Plates, all signed
- 188 _____ #94 Royal Blue 7"H x 8-1/4"W Sweet Pea Vase, Gold Encrusted #708 Etch (gold is worn)
- 189 _____ #3450 Amethyst Nautilus Salt & Pepper Shakers with Chrome Lids, #97 Crystal Caprice Holder (set)
- 190 _____ #881 Amber 4-1/2" 8-oz. Tumbler, Etch Hunt Scene
- 191 _____ #881 Willow Blue 4-1/2" 8-oz. Tumbler, Etch Hunt Scene, Rare
- 192 _____ #428 Crystal Virginian 10-1/2" Salad Bowl
- 193 _____ #518 Amber 8-1/2" Draped Lady Figure Flower Holder (small chips at holes)
- 194 _____ #1675 Crystal 8" 3-Part Relish Dish with Eagle Handle
- 195 _____ #2355 Crystal 6-1/2" Ruffled Epergne Vases (2)
- 196 _____ #935 Ebony 64-oz. Jug
- 197 _____ #66 Crown Tuscan Seashell 4" Footed Dolphin Candlesticks (pair)
- 198 _____ #3400 Amethyst Milk Jug on Farber Chrome Base
- 199 _____ #3797/67 Crystal Cambridge Square 3-1/2" Cupped Candlesticks (pair)
- 200 _____ #3400/4 Crown Tuscan 12" 4-Footed Flared Bowl
- 201 _____ #809 Willow Blue Decagon 6" Bread & Butter Plates, Floral Cutting, all signed (8), (2 are stained)
- 202 _____ #758 Willow Blue Decagon 5-1/2" 2-Handled Bonbon, Floral Cutting, signed
- 203 _____ #3077 Willow Blue 6-oz. Tall Sherbets, Floral Cutting (4)
- 204 _____ #3077 Willow Blue 9-oz. Goblets, Floral Cutting (6)
- 205 _____ #3797/40 Crystal Cambridge Square Cigarette Urn, Gold Encrusted D/Cigarette
- 206 _____ #3011 Forest Green 7" Nude Flared Comport
- 207 _____ #3011/7 Amber 4-1/2-oz. Nude Claret, Canadian Club Enamel on Foot (enamel is worn)
- 208 _____ #3011 Carmen Nude 7" Cupped Comport
- 209 _____ #319/B/2 Smoke Georgian Basket, Smoke Handle
- 210 _____ Farber Nude Comport with Amethyst Insert
- 211 _____ SS#44 Windsor Blue Seashell 6" Footed Flower Center - Snail
- 212 _____ #3500/8 Crystal 12" Fruit Basket, Etch Minerva
- 213 _____ #638 Cinnamon Decagon 3-Lite Keyhole Candlesticks (pair)
- 214 _____ Rubina Honeycomb 4"H x 8-1/2"W Footed Comport, Scalloped Edge, Good Color
- 215 _____ #3400/38 Amethyst 80-oz. Ball Jug & (6) Matching 12-oz. Tumblers
- 216 _____ #7606 Crystal 6" Bread & Butter Plates, Etch Marjorie (6), (all scratched)
- 217 _____ #7606 Crystal Parfaits, Etch Marjorie (5), (chip to 1)
- *218 _____ Special Article #95 Azurite 10" 1-Pound Covered Candy Jar**
- 219 _____ SS#46 Crown Tuscan 7-1/2" Shell Flower Holder, Charleton Roses & Gold, Mint Decor
- 220 _____ #3500/79 Amethyst 3" Footed Favor Basket
- 221 _____ #1201 Willow Blue 2-1/2-oz. Georgian Tumbler, signed
- 222 _____ #319 Peach-Blo 9-oz. Georgian Tumbler, signed
- 223 _____ #319 Bluebell 9-oz. Georgian Tumbler, Hard To Find
- 224 _____ #237 Amethyst Caprice 4-1/2" Ball Vase
- 225 _____ #168 Primrose 10" Center-Handled Sandwich Tray, #2011 Border Etch, Black Enamel Encrusted
- 226 _____ Amber 14-oz. Cordial Decanter in Farber Duchess Lace Filigree Holder
- 227 _____ #3115 Topaz 2-1/2-oz. Footed Tumbler, Etch Rosalie, Willow Blue Stem & Foot
- 228 _____ #240 Amber Round 10" Cake Salver, Gold Encrusted with Flowers & Butterflies, Very Unusual Etch
- 229 _____ #9 Crystal 4" Bath Powder Box and Cover, Etch Wedgewood (chipped under lid)
- 230 _____ #3101 Crystal 3/4-oz. Pousse Cafe, Royal Blue Foot, Cut Flutes on Bowl
- 231 _____ #3500 Crystal 1-oz. Cordial, Engraved Adonis
- 232 _____ #3116 Crystal 1-oz. Cordials, Engraved Lucia (4), 1 Cambridge label
- 233 _____ #3035 Amber 1-oz. Cordial

- 234 #1066 Mocha 1-oz. Cordial with Optic Bowl
- 235 #3122 Carmen 1-oz. Cordial
- 236 #3035 Gold Krystal 1-oz. Cordial, Etch Apple Blossom, Amber Stem & Foot
- 237 #3400/61 Lt. Emerald 7" Tea Plates, Etch Gloria, all signed (5)
- 238 Milkglass Cambridge Rolling Pin, Original Imperial Manufacturing Handles
- 239 P.101 Crystal Pristine 32-oz. Cocktail Shaker, Etched Birds (minor roughness inside)
- 240 #3400/38 Crystal 80-oz. Ball Jug, Sterling Silver Overlay & Cutting
- 241 #3077 Willow Blue 6-oz. Tall Sherbet, Etch Cleo
- 242 #3077 Willow Blue 9-oz. Goblets, Etch Cleo (4)
- 243 #2 Crystal Rooster Muddler
- 244 #2 Amber Rooster Muddler, Very Rare
- 245 #163 Crystal 8-1/2" Asparagus Plates (4)
- 246 #1309 Crown Tuscan 5" Globe Vase, Etch Portia, Crown Tuscan signature
- 247 #925 Forest Green Round After-Dinner Cups & Saucers, Mint Gold Decorated, signed (2 sets)
- 248 #3011/9 Smoke 3-oz. Nude Cocktail
- 249 #7966 Talisman Rose 3-1/2-oz. Cocktails (4)
- 250 #7966 Talisman Rose 6-oz. Tall Sherbets (4), 2 with Cambridge labels
- 251 #3500/69 Emerald Green 6-1/2" 3-Part Relish on Farber Chrome Base, Cambridge label
- 252 #1066 Amethyst 7" Ivy Ball, Crystal Stem & Foot (stained)
- 253 #1402/77 Crystal Tally-Ho 13" Footed Punch Bowl and Underplate & (9) #1402/140 Crystal Tally-Ho Cups with Amethyst Handles (chip on foot of bowl)
- 254 Special Article #65 Azurite 9-1/2" Doric Column Candlesticks (pair)
- 255 #61 Crystal Everglade 10" Bowl & #3 Matching 6" 2-Lite Candlesticks (pair), (leaf foot polished on bowl)
- 256 #3125 Gold Krystal Goblet, Etch Deauville, Crystal Stem & Foot
- 257 #466 Crystal Cereal or Grapefruit Bowl, Etch #715 Willow Scene, Blue Enamel Decoration (no gold)
- 258 #66 Crown Tuscan Seashell 4" Footed Dolphin Candlestick, Charleton Floral Decoration (trim wear)
- 259 #1215/619 Lt. Emerald 3-Piece Oil & Vinegar Set, all signed
- 260 #647 Crystal 6" 2-Lite Keyhole Candlesticks, Etch Candlelight (pair)
- 261 #798 Peach-Blo Crackle 10" Flip Vase, Rare
- 262 #1307 Amethyst 5-1/4" 3-Lite Candlesticks (pair)
- 263 #3400/91 Crown Tuscan 8" 3-Part Relish with Gold Trim
- 264 #1040 Mocha 3" Swan, Style II, signed
- 265 #1040 Lt. Emerald 3" Swan, Style II, signed
- 266 #1044 Crystal 10-1/2" Swan, Style II, signed
- 267 #3011/2 Crystal Nude Table Goblet, Satin Stem & Optic Bowl, Monogrammed HSW
- 268 #3011/25 Carmen Nude Ivy Ball
- 269 #3011/9 Royal Blue 3-oz. Nude Cocktail
- 270 #3500/57 Crown Tuscan 8" 3-Part Candy Box and Cover, Charleton Bird Decoration (gold trim wear)
- 271 #7606 Crystal 7" Salad Plates, Etch Marjorie (7), (all scratched)
- 272 #7606 Crystal 2-oz. Creme de Menthes, Etch Marjorie (5)
- 273 SS#46 Crown Tuscan 7-1/2" Shell Flower Holder
- 274 #495 Crystal Martha 5-1/2" 2-Lite Candlestick, Etch Portia
- 275 #13 Crystal Everglade 13" Bowl - Tulips
- 276 #50 Amethyst 8" Dolphin Candlesticks (pair)
- 277 Peach-Blo #933 Cups & Saucers, #556 8" Plates, Etch #732, all signed (4 sets), (1 plate has edge grind)
- 278 #85 Azurite 10-1/2" Footed Vase, Gold Encrusted #528 Etch (trim wear)
- 279 #3075 Peach-Blo 2-1/2-oz. Cocktail, Gold Encrusted Hunt Scene Etch
- 280 #1400 Carmen Martha Washington 10-oz. Goblet, Etch #401 Vintage, Rare
- 281 #274 Crown Tuscan 10" Footed Bud Vase, Gold Encrusted Rosepoint Etch
- 282 #3 Moonlight Blue 5" Star Candleholders (pair)
- 283 #581 Peach-Blo 4" Square-Knobbed Powder Box
- 284 #585 Bluebell Perfume with Beehive Stopper (small chips at opening)
- 285 #500/122 Amber Block-Optic 56-oz. Pitcher and Lid
- 286 #903 Avocado 14-1/2" Oval Service Tray
- 287 #3400/69 Amber After-Dinner Cup & Saucer, Etch Portia, signed, Unusual
- 288 #1041 Crystal 4-1/2" Swan, Style III
- 289 #1043 Ebony 8-1/2" Swan, Style I, signed (beak repair, fin chip)
- 290 #1042 Emerald Green 6-1/2" Swan, Style III

- 291 _____ #3400/8 Carmen 11-1/2" 2-Handled Sandwich Plate, Gold Encrusted Portia Etch, signed, Rare
- 292 _____ #278 Crystal 11" Footed Vase, Engraved Achilles (chip on rim)
- 293 _____ #94-1/2 Rubina 4-1/2"H x 7"W Sweet Pea Vase
- 294 _____ #1236 Crystal French Dressing Bottle, Etch Rosalie (badly stained, chip on stopper)
- 295 _____ #107 Blue II 76-oz. Jug and Cover & (2) #1630 Matching 12-oz. Tumblers (crack in jug handle)
- 296 _____ P.254 Crystal Individual Cream & Sugar, Etch Chantilly, Sterling Base (sugar base is dented)
- 297 _____ #1 Amber Keg Decanter & (4) 2-oz. Tumblers, Ebony Tray & Holder
(1 tumbler ground, chip under holder)
- 298 _____ Crystal 2-7/8" Flower Frog Insert for Vase, Patent Etching on Side
- 299 _____ #154 Crystal Arcadia 5-1/2" Bowl with Sterling Silver Foot & #72 Arcadia 3-1/2" Candlesticks (pair)
- 300 _____ SS#21 Crown Tuscan Seashell 6" Footed Candy Box and Cover, Sterling Trim on Knob and
Around Edge, and Sterling Sea Horse Decoration in Candy Box Bottom, signed, Rare
- 301 _____ #513 Lt. Emerald 13" Draped Lady Figure Flower Holder (chip, mold seam roughness)
- 302 _____ #513 Pink 13" Draped Lady Figure Flower Holder (badly cracked base)
- 303 _____ #3103 Carmen 10-oz. Goblet, Crystal Stem & Foot
- 304 _____ #50 Crown Tuscan 8" Dolphin Candlesticks (pair)
- 305 _____ Helio 9" Deep Comport
- 306 _____ #3400/119 Amber 12-oz. Ball Decanter in Farber Holder & (6) #1341 Amber 1-oz. Cordials
on Farber Tray
- 307 _____ #3400/14 Crystal 7" Tall Comport, Gold Encrusted Portia Etch (minor trim wear)
- 308 _____ #62 Jade 7-1/2" Tall Comport
- 309 _____ #3400/45 Crown Tuscan 12" 4-Footed Bowl, Gold Encrusted Diane Etch, CT signed (gold trim wear)
- 310 _____ #9 Crystal Mt. Vernon 8" Footed Urn and Cover
- 311 _____ #64 Ivory 5-1/4" Cheese Comport
- 312 _____ #3011 Carmen Nude Cigarette Box and Cover, Short Stem (pin head nick on lid)
- 313 _____ #428 Crystal 11" Oval Bowl & #495 Martha 5-1/2" 2-Lite Candlesticks (pair)
- 314 _____ #3797 Crystal Cambridge Square 9-3/4" Bowl, Etched Vanadium Corp. 1953
- 315 _____ #198 Topaz Perfume with Complete Dauber Stopper
- 316 _____ #1221 Crystal 5-oz. Swan Punch Cups (8), 1 with Cambridge label
- 317 _____ #532 Ebony 6" Tall Comport, D/619 Gold Encrusted Trim, Mint Gold
- 318 _____ #107 Amber 76-oz. Jug (no cover), Etch Tulip & (4) #1630 Matching 12-oz. Tumblers
- 319 _____ W133 Milkglass Cascade 9-1/2" Vase
- 320 _____ Azurite 11-1/2" Lamp Base plus Original Fittings
- 321 _____ SS#21 Crystal Seashell 6" Footed Candy Dish and Cover (base is off color)
- 322 _____ #3900 Crystal Corinth 12-1/2" Cakestand (lightly stained), Unusual
- 323 _____ #663 Crystal 3-Lite Epergne Set (base, arm, 2 vases), 1 Cambridge label
- 324 _____ #385 Lt. Emerald 8-1/2" 3-Part Relish, Etch #711, signed
- 325 _____ #3500/109 Amber 11" 4-Toed Oval Bowl, Ram's Head Handles
- 326 _____ #1206 Willow Blue 76-oz. Twisted-Optic Pitcher & (4) Matching 12-oz. Tumblers,
2 with Cambridge labels
- 327 _____ Crystal Empress Early Salt & Pepper Shakers on Center-Handled Tray (no lids)
- 328 _____ #94 Ivory 8-1/2" Sweet Pea Vase, Sterling Silver Overlay
- 329 _____ #7606 Crystal 12-oz. Handled Tumblers, Etch Marjorie (8)
- 330 _____ #3900/114 Crystal 32-oz. Martini Jug, Etch Chantilly, Cambridge & sample labels
- 331 _____ #3175 Carmen Georgian Sherbet
- 332 _____ #433 Helio 8-1/2" Wedgewood Style Plate, Mint Gold Trim
- 333 _____ #1957/112 Crystal Rondo Salt Shaker, Etched Silver Maple (Platinum)
- 334 _____ #556 Lt. Emerald 8" Round Plate, Etch #715 Willow Scene
- 335 _____ #3400/1240 Crown Tuscan 12" 4-Toed Oval Bowl, Gold Encrusted Diane Etch, CT signed (worn gold)
- 336 _____ #1321 Carmen 28-oz. Sherry Decanter, Crystal Foot and Original Stopper
- 337 _____ #2780 Crystal Inverted Strawberry NearCut 2-oz. Wine Goblet, signed
- 338 _____ #2631 Crystal Marjorie NearCut Tall Cracker Jar and Lid, signed (jar has several bruises)
- 339 _____ #2631 Crystal Marjorie NearCut 10" Large Footed Orange Bowl
- 340 _____ #2660 Crystal Wheat Sheaf NearCut 9" Shallow Bowl, signed
- 341 _____ #2631 Crystal Marjorie NearCut Shakers with Original "as-is" Lids, signed
- 342 _____ #2651 Crystal Feather NearCut 8" Tall Comport, signed
- 343 _____ #2658 Crystal NearCut 4-oz. Mug, Red Flashed, Mother from William 1909, signed
- 344 _____ #2635 Crystal Fernland NearCut 11" Bread Plate, signed
- 345 _____ #2696 Crystal NearCut 8" 2-Handled Cracker Jar and Cover (chip under lid)
- 346 _____ #2766 Crystal Feather NearCut 11" Punch Bowl (no foot), signed

- 347 _____ #2635 Crystal Fernland NearCut 8" Footed Comport, E Shape, Crimped
348 _____ #3400/92 Ebony 32-oz. Ball Decanter & (5) Matching 2-1/2-oz. Barrel Whiskies
349 _____ #3500 Crystal 7" 2-Division Relish in Farber Duchess Lace Frame
350 _____ #42 Willow Blue Everglade 6" Comport
351 _____ #3078 Amber 84-oz. Jug, Applied Crystal Handle
352 _____ #62 Helio 7-1/4" Tall Comport, White Gold Encrusted #519 Etch (trim wear)
353 _____ #1066 Carmen 1-oz. Cordial
354 _____ #3776 Crystal 1-oz. Cordial, Engraved Maryland, Cambridge label
355 _____ #3126 Mocha 1-oz. Cordials (2)
356 _____ #7966 Crystal 1-oz. Cordial, Etch Moss Rose, Unusual
357 _____ #3035 Carmen 1-oz. Cordial
358 _____ #3106 Crystal 1-oz. Pousse Cafe, Etch Elaine
359 _____ #315 Lt. Emerald 28-oz. Decanter
360 _____ #128 Peach-Blo Stratford 10" Belled Bowl, #703 Border Etch, signed
(gold not original, chipped at 2 points)
361 _____ Special Article #85 Helio 10-1/2" Vase, Gold Band Decorated (slight gold trim wear)
362 _____ Rubina Honeycomb 8-1/2" Tall Comport, Perfect Color
363 _____ #3900/114 Crystal 32-oz. Martini Jug, Engraved King Edward, Cambridge label
364 _____ #522 Lt. Emerald 10" 2-Bun Geisha Figurine
365 _____ #3500/17 Crystal 12" Footed Bowl, Heavy Sterling Silver Overlay
366 _____ P.102 Crystal Pristine 48-oz. Cocktail Shaker, Etch Diane
367 _____ SS#31 Crown Tuscan Seashell 8" 4-Footed Oval Dish with Charleton Decoration (roses inside are gone)
368 _____ SS#18 Windsor Blue Seashell 12" 3-Footed Bowl, signed, Excellent Color, Rare
369 _____ #1356 Crystal 7" 2-Lite Candelabra (no bobeches), (pair), (chip to 1)
370 _____ #3400/11 Gold Krystal 4-Toed Mayonnaise Dish, Etch Gloria, signed
371 _____ #1066 Crystal Oval Cigarette Holder with Ashtray Foot, Engraved Achilles
372 _____ Lt. Emerald Wetherford Powder Jar and Cover
373 _____ #1338 Royal Blue Cigarette Holder, Crystal Twist Stem and Ashtray Foot
374 _____ #306 Crystal 6-1/2" Covered Candy Box, Carmen Rose Knob
375 _____ #3797/40 Ebon Cambridge Square Cigarette Urn, Gold D/Stars
376 _____ #783 Willow Blue Aero-Optic 10" Vase, Early Cambridge label
377 _____ #6004 Crown Tuscan 12" Footed Vase
378 _____ Helio 9-1/2" Doric Column Candlesticks (pair), (worn gold trim)
379 _____ #1236 Royal Blue 8" Ivy Ball, Crystal Keyhole Stem & Foot
380 _____ #70 Crystal Caprice Alpine 7" Candlesticks with Prism (pair), (1 prism damaged)
381 _____ #33 Crystal Caprice Alpine 14" 3-Footed Cabaret Plate (scratched)
382 _____ #99 Crystal Caprice 3-Piece Oil & Vinegar Set (tray has tiny nick)
383 _____ #74 Crystal Caprice 3-Lite Candlestick
384 _____ #65 Crystal Caprice 11" 4-Footed Handled Oval Bowl
385 _____ #81 Moonlight Blue Caprice 13" 4-Footed Shallow Bowl
386 _____ #165 Moonlight Blue Caprice 3-Footed Candy Box and Cover
387 _____ #3121 Crystal 5-oz. Footed Tumblers, Etch Rosepoint (6), (minor rough spot on 1)
388 _____ #3500/14 Crystal Cream & Sugar, Etch Rosepoint
389 _____ #274 Crystal 10" Footed Bud Vases, Etch Rosepoint (2)
390 _____ #3500/57 Crystal 8" 3-Part Candy Box and Cover, Etch Rosepoint
391 _____ #3400/102 Crystal 5" Globe Vase, Etch Rosepoint
392 _____ #1238 Crystal 12" Keyhole Vase, Etch Rosepoint
393 _____ #1528 Crystal 10" Vase, Etch Rosepoint, Hard To Find
394 _____ #3400/52 Crystal 5-1/2" Butter and Cover, Etch Rosepoint, signed
395 _____ #3500/37 Crystal 7" 2-Handled Tall Comport, Etch Rosepoint

We hope you enjoy the auction!
See you again next year!

A Cambridge Glossary Circa 1934

by Mark A. Nye

At some time in the 1930's the Cambridge Glass Company sent out the following, probably included in a circular letter to retail buyers. It is not too clear what kind of document this was meant to be, nor whether it is even complete. Based on the list of colors and lines and the names used, we can assume it originated in 1933 or 1934.

"Cambridge is a hand-made plant. Everything produced in our factory is entirely hand made. We do not have any automatic or semi-automatic machines. All of the glass is pot glass.

"DIANE: this is a crystal pattern in deep plate etching. The stemware is a fine lead blown quality, very rich in lead and potash with a high resonance, and of course by this we are referring to the blank we are making now. The stemware you have in stock does not have quite as much 'ring' as the present output.

"ACHILLES: this is a Rock Crystal Engraving. The hollow ware pieces are all engraved in a design of deep cut Russian Diamond effect. This makes a very brilliant cutting. The quality of metal used in this stemware is the best we can produce. This pattern is a full acid polished cutting and is labeled 'Rock Crystal' at the factory.

"CROWN TUSCAN: this is a new, pinkish, ivory, translucent glass; somewhat resembling a very high grade china. This glass takes a very high fire polish, and the colorings in each piece vary slightly in an interesting manner.

"CROWN TUSCAN, D/1001: this pattern is the result of inlaying Crown Tuscan with 22-karat gold, burnt and polished. The first process in this work is to put on a deep plate etching; the etching is then filled with gold, and after the surface is carefully cleaned off so that only the gold down in the etching is left on the glass, then it is burnt. All of this gold work is of the very best quality and if properly used there is no danger of the gold wearing off.

"#3011 CARMEN: this stemware line has a nude figure stem in crystal, bowl of a very nice ruby red. This ruby is made in such a way that it does not give the appearance of being amberish nor does it have light red spots in it.

"#3011 VICHY: this stemware line is crystal with a modernistic deep plate etching. All crystal.

"FOREST GREEN: articles made in this color have a cool, green shade, reminding one of springtime forests, for which the color was named.

"ROYAL BLUE: this is a deep, cobalt blue.

"AMBER: Cambridge Amber is of the lustrous, sparkling type of Amber. There are not many others having this same quality in the same degree.

"AMETHYST: this is a medium purple. We also make Dianthus (Pink), Heatherbloom (Lavender), Topaz (Canary), Gold Krystal (Light Yellow), Ebony (Black), Emerald (Light Green), Eleanor (Light Blue).

"HEAT RESISTANCE: our salad plates, cups & saucers, vegetable dishes and other pieces supposed to stand heat, are annealed very carefully and thoroughly so that they will stand the ordinary usage they are intended for."

Note: D/1001 is Gold-Encrusted Portia, regardless of the color of the blank, hence the term "Crown Tuscan, D/1001" as used here is misleading.

Note: for a time during the 1930's, Cambridge renamed the color known as Willow Blue "Eleanor" or "Eleanor Blue," perhaps in honor of Eleanor Roosevelt, the First Lady at the time.

WANTS

**Wanted: Cambridge Nautilus #3450
Crystal 28-oz. Decanter with stopper,
Crystal Sugar and Creamer**

Julie or Mike Opack
218-728-5410
E-mail Captjij101@aol.com

**Wanted: Mt. Vernon Pattern in
Royal Blue.**

Rich & Linda Desmond
(732) 251-0399
fax (732) 251-3407
E-mail Rich1NJ@att.net

November Minutes

from page 5

could no longer continue on in this position due to what he perceived to be irreconcilable differences between the Board and himself.

Mike Arent felt that due to the magnitude of what had just transpired it might be a good idea to have a discussion which would clear the air and help defuse some misleading statements of fact that were being circulated.

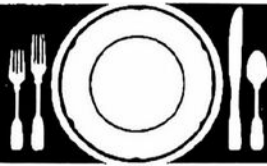
A vibrant discussion followed, and many topics were discussed: they included the current state of NCC monies, the question of Board officers' resignations, and subsequent reinstatements. The question of the Museum mortgage pay down timetable was discussed. Dialogue continued as to whether Board decisions were being implemented as directed. At this point, Les Hansen suggested that NCC was in great shape based on the fact that such an open discussion as this one could happen, that members feel free to speak out, and that this much passion is constructive. Lynn Walker reminded the membership that the Board Meetings are open and members are welcome to come.

George Stamper finished the discussion by reading his message to the Board, which stated that the reinstatement of the Board officers was a necessity, and the best course of action. George said that he felt we were on the right track and that we have definitely created interest.

Mark Nye made a motion to adjourn the meeting; Judy Momirov seconded the motion. The motion carried and the meeting was adjourned at 8:15 PM.

Respectfully submitted,

Ken Filippini



Stems Without Thorns

As the world's largest supplier of old & new china, crystal, silver and collectibles, Replacements, Ltd. has more than 700 different patterns of Cambridge crystal.

And however much we enjoy selling pieces that were once thought irreplaceable, we love buying them as well. Thanks to people like you, our crystal inventory currently numbers in the hundreds of thousands, and the numbers keep growing every year.

So, if you've been unsuccessfully searching for that elusive piece of Cambridge — or any other type of fine crystal — call us for a free list of pieces available in your pattern. And, if you're looking to sell pieces you currently have, we can help you there, too.

REPLACEMENTS, LTD.
China, Crystal & Silver • Old & New

1-800-REPLACE
(1-800-737-5223)

1089 Knox Road,
PO Box 26029, Dept. CB,
Greensboro, NC 27420
www.replacements.com

WE CLEAN CLOUDY GLASS! **SATISFACTION GUARANTEED**

Yes, *it is true* that we can really restore the interior of your cruet, vase, decanter and other internally etched items back to near original condition.

We do not oil, wax or cover up the sickness in any way! We actually remove it.

No items are too sick to clean! If we cannot clean an item to meet your satisfaction, the cleaning is FREE!

Send no money up front. When we return your item a bill will be enclosed for the cleaning and postage. If you are not fully satisfied, only the return postage is requested.

Most items clean in 7-8 weeks. All glass is handled and cleaned at your risk. Some very cloudy items may take several additional weeks.

Cocktail Shaker	\$35 - \$40	Salt Shaker (1)	\$25
Cologne Bottle	\$30	Salt Shaker (pr)	\$45
Cruet	\$30	Vase (under 10")	\$30 - \$35
Decanter	\$35 - \$45	Vinegar & Oil	\$30
Lavender Jar	\$25 - \$35	Water Bottle	\$35 - \$40

Ship to: **Kim Carlisle & Associates**
28220 Lamong Road, Dept. C
Sheridan, IN 46069
(317) 758-5767

kcarlisl@indy.net

Upcoming Glass Shows & Other Events

February 1-2, 2003:
South Florida D.G. Show & Sale
Ft. Lauderdale, FL
Call (954) 985-1120
E-mail trainmon@bellsouth.net

February 8-9, 2003:
Washburn's San Antonio Show
Live Oak Civic Center
Live Oak, TX
Call (210) 599-0635
E-mail WashburnK@aol.com

February 22, 2003:
Green River D.G. Show & Sale
Kent, WA
Call (253) 852-5250
E-mail kayswede@msn.com

February 22-23, 2003:
Arkansas Glasshoppers
17th Annual Glass Show & Sale
Little Rock, Arkansas
Call (501) 375-0435
E-mail esthermitchell@msn.com

March 8 & 9, 2003
Chicagoland D.E. Glass Show & Sale
Concord Place Midwest Conf. Ctr.
Northlake, IL
E-mail: schmidt.tim@attbi.com

Classified Ads

The Crystal Ball

offers this space for classified ads

Buy, Sell
Advertise your service

Only 10 cents a word
(\$2.00 minimum charge)

Deadline is the 10th of the month

Mail submissions to:
PO BOX 416
Cambridge, OH 43725

Or e-mail to:
NCCcrystalball@aol.com

Payment should accompany your text. Abbreviations, initials and numbers count as words.

Cambridge Glass Books *by National Cambridge Collectors, Inc.*

FOR ORDERING INFORMATION, SEE FOLLOWING PAGE

<u>NCC Members receive a 10% discount on these books</u>			
1910 Near Cut	19.95	Rock Crystal Engravings	14.95
108-page reprint of 1910 catalog Paperback with Price Guide		94 pages; Paperback (no Price Guide)	
1930-34 Catalog Reprint	14.95	Rosepoint	19.95
250 pages; Paperback with Price Guide		by Mark Nye; comprehensive guide to Rosepoint showing blanks plus history of the line.	
1930-34 Index (for above)	2.00	Rosepoint Price Guide	5.00
1949-53 Catalog Reprint	14.95	(Included with Rosepoint book listed above. This price is for the Price Guide if purchased seperately)	
300 pages; Paperback with Price Guide			
1956-58 Catalog Reprint	12.95		
160 pages; Paperback (no Price Guide)			
Caprice	19.95	<u>The following books do not offer discounts</u>	
200 pages; lists colors, decorations, repros, etc. Paperback with Price Guide		Charleton Decorations AVAILABLE SOON!!!	29.95
Colors in Cambridge Glass	19.95	Comprehensive, full-color guide to Charleton Hard-Cover (no Price Guide)	
128 pages; 60 color plates; fully indexed Hard-Cover with Price Guide		1903 Catalog Reprint	5.00
Decorates	12.95	by Bill & Phyllis Smith	
136 pages; Paperback (no Price Guide)		106 pages; Paperback (no Price Guide)	
Etchings, Volume 1	14.95	1927-29 Catalog Reprint	7.95
by Miami Valley Study Group		by Bill & Phyllis Smith	
84 pages; Paperback (no Price Guide)		66 pages; Paperback with Price Guide	
Etchings, Non-Catalogued	12.95	1940 Catalog Reprint	25.00
70 pages; Paperback (no Price Guide)		250 pages; loose pages are 3-hole punched to be placed in your binder. No Price Guide	
Etchings: Blossom Time	7.95	1940 Catalog Binder	5.00
26 pages; Paperback		with Cambridge logo printed on front	
Etchings: Candlelight	7.95	Stemware	19.95
30 pages; Paperback		by Mark Nye; shows all Cambridge stemware lines known at time of publication	
Etchings: Chantilly	7.95	167 pages; Paperback (no Price Guide)	
44 pages; Paperback		Welker - Volume I	10.00
Etchings: Diane	7.95	by Lynn & Mary Welker; reprints from a number of Cambridge Catalogs	
53 pages; Paperback		120 pages; Paperback (no Price Guide)	
Etchings: Elaine	9.95	Welker - Volume II [color]	5.95
64 pages; Paperback		by Lynn & Mary welker; 15 color plates showing choice pieces from their vast collection	
Etchings: Portia	7.95	Spiral-bound (no Price Guide)	
57 pages; Paperback		Reflections	5.00
Etchings: Wildflower	7.95	by The Degenhart Paperweight & Glass Museum A history of Guernsey County glass production.	
42 pages; Paperback		45 pages; Paperback	

Books and Merchandise Available from NCC

VIDEOS

"The Crystal Lady" \$15.00

A video copy of an original Cambridge Glass Co. promotional film showing the making of a goblet in the Cambridge factory. 25 minutes, B&W.

NEW: Grand Opening Video \$15.00

A high-quality video record of the Grand Opening of The National Museum of Cambridge Glass. 25 minutes, Color.

SALT & PEPPER TOPS

Salt & Pepper Tops \$6.00 per pair

Polycarbon plastic, will fit most Cambridge shakers such as Rosepoint footed and flat-bottom shakers. Also fit Heisey Rose, Saturn, Plantation, Crystalite and some Orchid. Will fit some Anchor Hocking and Candlewick.

Order 10 or more pairs, pay only \$5 per pair

Books by Gene Florence

Very Rare Glassware (3rd Series)	\$24.95
Very Rare Glassware (5th Series)	\$24.95
Very Rare Glassware (6th Series)	\$24.95
Elegant Glassware (8th edition)	\$19.95
Glassware of the 40s-50s-60s (4th edition)	\$19.95
Stemware (Cordials) 1920s-1960s	\$24.95
Glass Candlesticks	\$24.95

CONVENTION FAVORS

1995 Cranberry Ice Cascade Goblet	\$5.00
1998 Yellow Irridized Cascade Goblet	\$5.00
2000 Carnival Mt. Vernon Juice	\$5.00
2001 Carnival Mt. Vernon Juice	\$5.00
Cambridge Prism Sign, Mint Julep	\$15.00

CONVENTION BOOKLETS

Convention Booklets \$5.00/year

- All NCC Conventions 1994 - 2001 •
- Set of all 8 years \$25.00**
- (you save \$15)

NEW NCC LOGO PINS

Show your pride in being a Cambridge collector and a member of NCC.

Only \$5.00 includes shipping



SCOTTY DOGS

Red Scotty Dog Bookends are still available! \$100.00/pair
2000 fund raiser for NCC Museum; made in original Cambridge molds by Mosser. Marked NCC 2000.

Ordering Information

NCC Members get a 10% discount on all the books within the dotted lines on page 17. There are no discounts on any other items.

SHIPPING & HANDLING RATES:

First item	\$3.00
Each additional item	\$1.00

SPECIAL SHIPPING:

- Scottie Dogs: \$10/pair for shipping
- Salt/Pepper Tops: \$3 shipping for any size order
- Jadite Tumblers: \$3 each, \$10 for a set of six
- Logo Pins: shipping included in price

**OHIO RESIDENTS:
PLEASE ADD 6.5% SALES TAX**

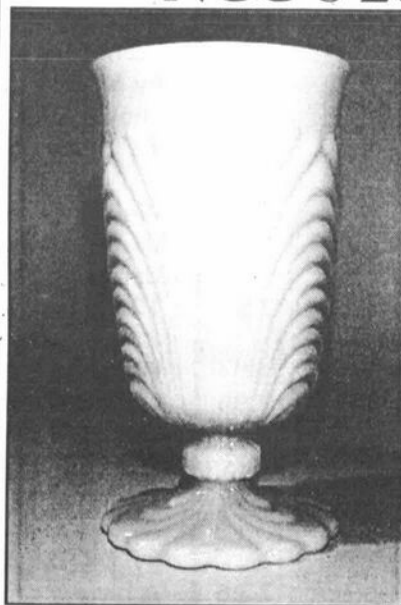
Payments by check or money order only.

Send orders to:

NATIONAL CAMBRIDGE COLLECTORS, INC.
PO BOX 416
CAMBRIDGE, OH 43725

Be sure to include your complete shipping address and phone number. Thanks!

Caprice Jadite Tumblers NCC's 2002 Project



A Happenin' Color!
Cool, Retro Styling!

"Martha would want you to have these!"

\$20 each
Set of 6 for \$100
plus shipping charges of
\$3 each or \$10 for the set of 6

Made for the NCC by Mosser Glass
Marked on the bottom:
NCC 2002

DEALER DIRECTORY

When writing to these dealers, please enclose SASE

DAUGHERTY'S ANTIQUES
Jerry and Shirley

Antiques and Collectibles • Mostly Glass
www.daughertys-antiques.com

Shows & Mail Orders 2515 Cheshire North
(402) 423-7426 evenings Lincoln NE 68512

Milbra's Crystal Buy & Sell
Replacement and Matching *Specializing in Cambridge, Fostoria, Heisy and others.*

Milbra Long (817) 645-6066
Emily Seate (817) 294-9837
PO Box 784
Cleburne TX 76033

E-mail: longseat@flash.net

THE GLASS URN
456 West Main Street, suite G
Mesa, AZ 85201 480-833-2702
480-838-5936

Mail Order Shows Open Shop

CAMBRIDGE, FOSTORIA, HEISEY, etc.

THE DEGENHART PAPERWEIGHT AND GLASS MUSEUM, INC.

P.O. Box 186
Cambridge, OH 43725-0186

Intersection of US 22 & I-77
Phone 740-432-2626

THE GLASS CUPBOARD
P.O. Box 652
West End, North Carolina 27376

Marcia Ellis Cambridge Show
910-673-2884 and Mail Order

FINDER'S ANTIQUE HOUSE
3769 Highway 29 North
Danville, VA 24540

(434) 836-6782

Cambridge • Heisey • Duncan • Fostoria
Open Wed - Sat 11:00 to 5:00 (seasonal hours apply)

Monday thru Saturday 10 - 5:30 Sunday 12 - 5:50

Bogart's Antiques
BUY - SELL - APPRAISE - REFINISH
CANE & REED CHAIRS - CLOCK REPAIR

Jack & Sharon Bogart State Route 40
740-872-3514 shop 7527 East Pike
740-826-7439 home Norwich, OH 43767

YOU CAN ADVERTISE YOUR ANTIQUE SHOP HERE!

CRYSTALLINE COLORS
Buy, Sell and Appreciate
Cambridge and other Elegant Glass

I Love Cambridge


Lynne R. Franks 216-661-7382
Ohio & western PA Antique Malls

CRYSTAL LADY
Thurs. - Sat. 11-5
1817 Vinton St. Omaha, NE 68108
Bill, Joann and Marcie Hagerty
Shop 402-341-0643 Home 402-391-6730

Specializing in Elegant Glass & Collectibles
www.crystalladyantiques.com

Storck's Antiques Rick & Joyce
Antiques & Collectibles • Glass & Pottery
Specializing in Fenton, Imperial & Cambridge
Shows & Mail Orders • Storck1@aol.com
Greenfield, MN 55373 • (763) 477-6415

Mother Drucker's Penny Drucker
Specializing in Elegant Glassware Shows and Mail Order

 P.O. Box 50261 Phone: 949-551-5529
Irvine, CA 92619 888-MDRUCKER
Website: <http://motherdruckers.com>

Deborah Maggard, Antiques
Specializing in Cambridge Glass,
American Hand-Made Glass & Victorian Art Glass

Please stop and see our extensive collection of
Cambridge Glass at Riverfront Antique Mall in
New Philadelphia, Ohio (I-77, exit 81)
Booths 805 and 812
You won't be disappointed.

We buy one piece or entire collections.
Please contact me at 440-247-5632
and leave a message, or e-mail at
debmaggard@worldnet.att.net

P.O. Box 211
Chagrin Falls, OH 44022

JUDY'S ANTIQUES
Judy Bennett
422 S. Ninth Street (corner of Jefferson)
Cambridge, Ohio 43725

Business (740) 432-5855
Residence (740) 432-3045

CAMBRIDGE GLASS MY SPECIALTY


GREEN ACRES FARM
2678 Hazelton Etna Rd.
Pataskala, OH 43062
(State Route 310 North)

Sat & Sun 1-7 pm 740-927-1882
Antiques, Crystal Glass & Collectibles

THE JONES GROUP
Cindy Jones
Buy and Sell Cambridge Glass

650 Riverside Drive
Sleepy Hollow, NY 10591

914-631-1656 or E-mail Caprice0@aol.com

 **Mary Jane's Antiques**
Early American Pattern Glass
Depression Era Items

2653 Burgener Drive 217-422-5453
Decatur, IL 62521 mjhumes@aol.com

ALADDIN LAMP BOOKS
Free List
Figurine Lamps Wanted
Bill & Treva Courter

3935 Kelley Rd. Kevil, KY 42053
Phone 270-488-2116 FAX 2700-488-2055

GATEWAY ANTIQUE MALL, INC.
JUST NW OF MINNEAPOLIS-ST. PAUL, MN
*Next to Super 8 in Rogers, MN
(I-94/I01 intersection)*

85 Dealers • 7 days; 10 - 6 • 612-428-8286
ELAINE STORCK, OWNER/DIRECTOR

ISAACS ANTIQUES
(740) 826-4015

See our booths in Penny Court Mall in
Cambridge and at White Pillars Antique Mall
(Route 40, one mile west of
I-70 Norwich, OH • Exit #164)

PENNY COURT MALL
637 Wheeling Avenue
Cambridge, Ohio

100 Booths 15,000 sq ft

HOURS: Daily 10-6 Sunday Noon-5
Closed: Easter, Thanksgiving, Christmas

Call for other holiday hours 740-432-4369

MARGARET LANE ANTIQUES
2 E. Main St. New Concord, OH 43762
Lynn Welker (740) 826-7414

Cambridge Glass Matching Service
Hours: Mon-Fri 10-12 AM, 1-5 PM
or by appointment

DEXTER CITY ANTIQUE MALL
P.O. Box 70 Dexter City, Ohio 45727
(740) 783-5921

Located on Ohio Route 821
between exits 16 & 25 of I-77
Just 30 minutes south of Cambridge, OH

2003 NCC Convention Preview #1

Here it is January 2003 and all of Ohio is in a celebratory mood! Two hundred years of statehood and one hundred years of flight....all of Ohio is celebrating! Begin now to make your plans to join us in some of the celebrations in Ohio this June. This year brings us to the 30th Annual National Cambridge Collectors Convention in Cambridge, Ohio. The dates are Thursday, June 26 through Saturday, June 28. Mark your calendars NOW!

The 2003 NCC convention is being chaired by Shelley Cole Citron and Georgia Otten and plans are under way to make your convention experience memorable. The schedule of events is tentatively set. The potential speakers are being approached. The theme of the convention is under consideration...but be prepared for enchantment.

Since it does not appear that the Smith family will be holding an auction in conjunction with our convention this year, our schedule will be one day shorter. Rather than getting started on Wednesday evening, we plan to begin activities on Thursday afternoon. For those of you unable to get to town until later, there will be plenty to keep you busy. From the Glass Factory Tours, Show & Tell, Glass ID, Educational Programs, Touring the National Museum of Cambridge Glass and, oh yes, the Show and Sale at the Pritchard Laughlin Civic Center to the Glass Dash at the Beech Grove Family Center, we hope you won't be able to catch your breath.

The most important information we can give you at this time is to make your motel reservations early. With the entire state celebrating, we want to make sure your festivities in Cambridge for the convention will not be hindered by your inability to make motel reservations. To assist you with your reservations we have listed several of the motels in Cambridge along with phone numbers and the rates they have quoted for NCC members. Make sure to ask for special National Cambridge Collectors Convention rates that may be available.

We're looking forward to seeing you in June!

2003 NCC Convention Motel Information

All of these motels are located in Cambridge at Exit 178, Ohio route 209 off Interstate 70. Remember to mention that you are attending the National Cambridge Collectors Convention. There are limited rooms available at these rates. When they are booked, rates may be higher.

AMERIHOST CAMBRIDGE

Route 209 South
800 434-5800 or
740 439-1505
\$60 single or double,
includes continental bkfst
(indoor pool)

BEST WESTERN CAMBRIDGE

1945 Southgate Parkway
740 439-3581
\$55 single or double,
includes continental bkfst

HOLIDAY INN CAMBRIDGE

2248 Southgate Parkway
740 432-7313
\$69/night, 2 or more nights
\$75/night, 1 night stay

COMFORT INN CAMBRIDGE

Southgate Parkway
740 435-3200
\$60 single or double
includes continental bkfst
Evening snacks in the lobby
(Indoor Pool)

DAYS INN CAMBRIDGE

2328 Southgate Parkway
740 432-5691
\$59 single or double
includes continental bkfst
>Must book by 4/1/03 for
this rate

BUDGET INN - DEER CREEK

2325 Southgate Parkway
740 432-6391
\$45.95 single or double
weekly rates available
(indoor pool)

NATIONAL CAMBRIDGE COLLECTORS, INC.
P.O. BOX 416
CAMBRIDGE OH 43725-0416

<http://www.cambridgeglass.org>
E-mail: NCCcrystalball@aol.com

FIRST CLASS MAIL
US POSTAGE
PAID
PERMIT No. 3
CUMBERLAND OH 43732

FIRST CLASS MAIL

Membership Renewal Notice:
If the date above your name
is 01-03, this is your last issue,
and your NCC Membership has
expired.
Please renew today.