

Cambridge Crystal Ball



Published monthly by National Cambridge Collectors, Inc.
to encourage and report the discovery of the elegant and boundless product of the
Cambridge Glass Company of Cambridge, Ohio

Issue No. 360

April, 2003

Thirtieth Anniversary Issue

At the Auction

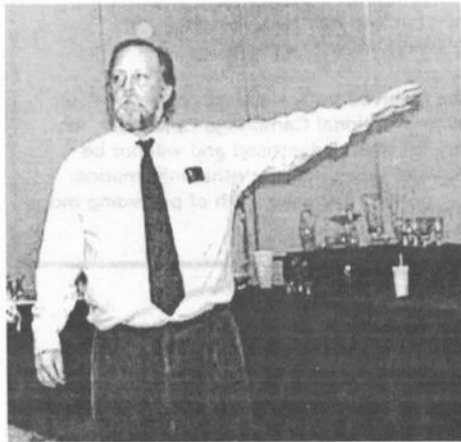
NCC Annual Auction Successful Again

by Lorraine Weinman

Several hundred Cambridge Glass seekers met at the Pritchard Laughlin Civic Center on Saturday, March 1, 2003, to try their luck at bidding at the Annual All-Cambridge Glass Benefit Auction. This weekend saw another successful auction, not only for the buyers and sellers, but also for The National Museum of Cambridge Glass.

Nothing compares to the wonderful assortment of glass available to go home with the highest bidders. The various lines, decorations, etchings, engravings, and colors of glass tell a wonderful story of the glassware produced by The Cambridge Glass Company in Cambridge from 1901 to 1958. It has been a century since the first glassware was made and its popularity among collectors continues to draw

continued on page 7



Auctioneer Craig Connelly taking bids. Is that the very rare Cambridge paper drink cup on the shelf behind him?



Previewing the glass

Color On-line

As of this issue, all photographs appearing in *The Crystal Ball* will be posted on-line in full color.

This will allow members to appreciate more fully the beauty of the glass pictured in the newsletter.

To view the photographs, go to www.Crystalballphotos.org

This month's password:
timon

**Convention Registration Form inside
see page 9**

National Cambridge Collectors, Inc.

PO Box 416
Cambridge, OH 43725-0416

Cambridge Crystal Ball

The official publication of National Cambridge Collectors, Inc., a non-profit corporation with tax-exempt status. Published monthly for the benefit of its members. All rights reserved; reproduction in whole or part without written permission of National Cambridge Collectors, Inc., and the author is prohibited.

Please notify us immediately of any address change.

Contacts:

President Rick Jones	(914) 631-1656
Secretary Ken Filippini	(201) 670-0990
Crystal Ball Editor Alex Citron	(434) 296-2531
NCC Museum (phone)	(740) 432-4245
(fax)	(740) 439-9223

Executive Editor
Research Editor
Advertising Manager
Circulation

Alex P. Citron
Les Hansen
Jeannie Moore
Sharon & Joe Miller

Membership

Membership is available for individuals at \$20.00 per year, and an additional \$3.00 for associate members (12 years of age and older, residing in the same household). Of the \$20.00 dues, \$14.00 is considered the cost of a one-year subscription to The Cambridge Crystal Ball. All members have voting rights, but only one issue of The Crystal Ball will be mailed to each member household.

Multi-year memberships are available:
2 years for \$38.00; 3 years for \$56.00.

2002-2003 OFFICERS AND COMMITTEE CHAIRS

President
Vice-President
Secretary
Treasurer
Sergeant-at-Arms
Corresponding Secretary

Richard D. Jones
Tarzan Deel, Jr.
Ken Filippini
Dennis Snyder
Charles Upton
Mark A. Nye

.....

Acquisitions
Archives
Budget & Finance
By-Laws
Endowment
Facilities

Lynn Welker
Mark A. Nye
Mike Strebler
Alex Citron
George Stamper
Carl Beynon
Joe Miller
Sharon Miller
Mike Strebler
George Stamper
VACANT
Cindy Arent
Tarzan Deel, Jr.
David Ray
Bill Hagerty
Mark A. Nye
Lorraine Weinman
Ken Filippini
Linda Roberts
Linda Roberts
Shelley Cole Citron
Georgia Otten
Dorothy Rieker
Squeek Rieker
Lynn Welker
Mary Beth Hackett
Joy McFadden
Larry Everett
Susan Everett

Grants & Fundraising
Long-Range Planning
Member Services
Membership
Museum
Nominating
Program
Projects
Publications
Publicity
Study Group Advisor
Technology
Webmaster
2003 Convention

2003 Auction

2003 Glass Show & Sale

2003 Glass Dash

Advertising Rates

Display Advertising (camera-ready):

Full Page	\$50.00
3/4 Page	\$40.00
1/2 Page	\$30.00
1/4 Page	\$20.00
1/8 Page	\$15.00

(Add \$5.00 for each photograph)

Classified Advertising:

10 cents per word; \$2.00 minimum
(Abbreviations and initials count as words)

Dealer Directory:

\$24.00 for twelve-month contract
Text limited by standard box size (see page 19)
Includes FREE listing on NCC website

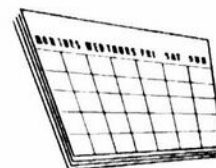
- Payment in full must be received before advertising will be run.
- Cambridge Crystal Ball and National Cambridge Collectors, Inc., assumes no responsibility for items advertised and will not be responsible for errors in price, description or other information.
- Advertising copy is due no later than the 10th of preceding month for publication.

Submissions to The Crystal Ball

By mail: P.O. Box 416 Cambridge, OH 43725
E-mail: NCCcrystalball@aol.com

Deadline: 10th of preceding month

NCC Calendar Upcoming Events...



June 26-28, 2003

NCC Annual Convention, Glass Show & Sale
Pritchard Laughlin Civic Center - Cambridge

August 23, 2003 (tentative)

12:00 noon • NCC Quarterly Meeting & Luncheon
at Theo's Restaurant in downtown Cambridge

November 8, 2003 (tentative)

6:30 pm • Quarterly Meeting & Educational Program
Holiday Inn - Cambridge

Board of Directors:

Cindy Arent; Tarzan Deel, Jr.; Larry Everett;
Ken Filippini; Rick Jones; Sharon Miller;
Dennis Snyder; George Stamper; Mike Strebler;
Charles Upton; Lorraine Weinman; Lynn Welker



President's Message

Spring's Fresh Scent

After a simply atrocious winter, it is such a delight to anticipate and experience all that Spring has to offer. It is a very "renewing" time of the year. You go outside, take a deep breath and shout FINALLY!

For those you haven't guessed it yet, the "theme" of this month's article is "keeping things fresh." As people, we need to do it. As an organization, we need to do it. Although some people find change frightening, I find it invigorating.

One nice example is our Museum. Although we just opened last year, our Museum Committee and many friends worked all winter to freshen up the Museum. This included changing some things from last year they felt could be done better, so they did it!

There was more room needed for all the "sample room" glass we acquired last year. On top of that, they had to clean the dozens of pieces we acquired - no small task. Further, most of these pieces were from the later periods of production so a lot of displays had to be rotated to make room for all this new inventory - a big job!

And, the Museum welcomed a new rotating display - this year it is Decorated Opaques from our primary loaners of Linda Roberts, Barb Wyrick and Georgia & Mac Otten. I can't wait to see this display; it's got to be gorgeous.

Cindy Arent, Lynn Welker and all their associates work diligently to maintain and improve our first class museum. They are to be heartily commended.

Speaking of tough acts to follow, Georgia Otten and Shelley Cole Citron are assuming the Convention Chair position from Mark Nye who has led this event for many years now. It was through no dissatisfaction with Mark that we made a change. Rather, it was this desire to keep things fresh.

You'll see in this issue's convention registration form that much of the program you've come to love about NCC's convention remains intact.

However, there are ample new twists and fresh approaches. For those who dislike any change, you might find this problematic. However, evolution is good. Try something different. See if it works. Why not? It's worth a shot. I particularly am looking forward to Friday night. Rather than a sit-down dinner (that was often less than satisfactory), they are trying a program of heavy appetizers. Ample food to feed our hungry warriors after hours of hard shopping on the glass show floor!

What I really like about this format is the chance to mingle. Way too often at sit-down dinners, we tend to cluster with the same friends over and over. This should give us a better chance to get to know more people. I like that idea! Unfortunately, since my picture is in this newsletter monthly, a lot of people know me. I am always trying harder to remember everybody's name ... not a real easy task when many of us meet just once a year!

If you have not made hotel reservations for June, now would be a good time. Some people got zipped last year at Cambridge motels because there were some bus tour groups that took out blocks of rooms that were normally available to NCC people. Best way to prevent that is to reserve early. You can always cancel later if your plans unfortunately change, but better to be safe.

Speaking of new, we will be unveiling a new annual award at this year's Convention - The Phyllis Smith Award. It will recognize outstanding contributions to NCC by a non-Board member. There are so many members who volunteer in so many ways to help the club. What a fitting way to honor Phyllis, who so unselfishly helped this club for so many years. A special award named for a special lady.

As long-term members know, we have been producing the Crystal Ball in pretty much the same way since the club started. OK, now we have PC's and email so production is a lot different, but the basic format has been the same. One chronic lament has been on the quality of photo reproduction. Pretty awful, right?

Well now, Alex Citron has come up with a unique solution that will at least help our members who have internet access (which I'd guess is 80%+ of us now???). He is setting up a separate website where color images of what is in the CB will be loaded for a limited time. That way, you can tell those Carmen goblets really are Carmen. And, maybe you can tell the D1007 decoration on them. Cambridge Glass is beautiful and it sure would be nice to see it in all of its colorful glory.

I hope you take some time at this most interesting time to do something fresh for yourself. Try something new. Open a new avenue. Maybe think about a new way to express your love for Cambridge Glass ... rearrange some displays at home, buy a new cabinet, think about a way to volunteer to help our preservation organization.

Any good club survives based on the quality of the thinking and the initiative of its membership. I've been happy to share just a few illustrations in this article but there are many, many more ... from regional outreach programs (like ones mentioned elsewhere in this issue) to new educational programs like the one Bill Dufft is working on for Convention on Cambridge in Farber. It's a great time to make a positive difference.

Enjoy your Spring forward!

*In Next Month's
Crystal Ball*

Election of Directors

...

The Museum at Replacements, Ltd.

...

Epergnes and Their Parts

Got Milk?

by Georgia Otten

The Cambridge Glass Company produced some of the most colorful glass in the industry and was rivaled by few. While some of the Cambridge colors were in production for long periods of time, such as Emerald (early light) and Crown Tuscan, others were introduced and discontinued for one reason or another. Some of the shorter lived colors were Cobalt 1, Rubina, Avocado and Heatherbloom.

Two of the last colors introduced by Cambridge were Ebon and Milk. These two colors were introduced January or February, 1954, and were in production for approximately six months until the initial closing of the factory in July 1954. There is no mention of these colors during the reopen period.

As mentioned and discussed often, glass collections vary from collector to collector. Cambridge colors are of interest to most of the collectors with personal preferences being made within that category. Generally speaking I believe Cambridge collectors refer to the color Milk as being Cambridge 'milk glass.' So, got milk?

I found two definitions of milk glass. The first from the Glass Encyclopedia: "Milk Glass is a term used by glass-makers for opaque white glass. The German term is milch-glass, the Italian term is lattimo (from latte, milk) and the French term is blanc-de-lait (milk white) or verre-de-lait." A second definition was found in an article written by Christina Van Ginkel: "Hold it up to the light. If a shimmery line of orange or purple appears around the rim, it's milk glass. If not, it's glass dyed white." Interesting thoughts!

The Colors in Cambridge Glass describes the Cambridge color: "Milk is a white opaque color with no opalescence and a somewhat lifeless color which achieves it's beauty from the high shine that it provides." I see no problem with calling the white glass made by Cambridge, milk glass.

All the items produced by Cambridge Glass in Milk were given a number preceded by the letter "W." I will take a leap of faith here and say that letter designates 'white.' While the color Milk was a new color in 1954, the molds chosen for the items poured in this color were not new. Cambridge used molds from the Nearcut era as well as molds from the thirties, forties and fifties.

By using catalog reprints available I found pictures of over eighty items shown in Milk. The largest representation from an existing line is 21 items poured in the Mt. Vernon pattern. The next largest group will be found in the Seashell line with 12 items. After that, other molds are represented by six or fewer items from a line. There are two items I know to exist that were not shown in the catalogs that I used. One is the Bridge hound and the other is the Caprice Candle Reflector. There are some items shown on catalog pages that are elusive to say the least. It is possible that some of the items shown were never put into production but were feasibility items only. However, since there are pictures of items.....it is possible there are one or two someplace. When you find the arms parts in Milk, please let me know!

It is interesting to me that Cambridge Glass Company started its major color production in the 1920's with the wonderful opaque colors, filled the 1930's and 1940's with the

transparent colors and during what would be some of the last production in the 1950's, introduced two new opaques!

So my question remains, **Got Milk?**

From The Glass Encyclopedia:
(written by Christina VanGinkel)

Milk glass received its name for its color, a 'milky' white. It was intended to look like porcelain, but not be as expensive to produce. This coloring is important when determining an old piece from a newer, reproduced piece. The older milk glass can often be picked out of a whole table of newer items by looking at the edges of the item. Older pieces appear almost transparent, especially on the edges, and light will show through the piece. Newer pieces are 'white' opaque, light not even showing through on the edges. Many fine examples date all the way through as recently as the present day though. Older pieces can be traced back to the 1500's, but most of what is collected today is from the 1700's and on. The name 'Milk Glass' also refers to other colored glass, which although it may be of color, is still 'milky' in color. Blue milk glass is very popular among collectors, with most blue pieces coming from France. Some pieces have painting on them, often common among sets, such as a dresser set, or salt and peppers. Never remove paint from a piece, even if much of it is worn, if you intend to try and 'date' the piece, as the paint may indeed be the key to the age of the item.

*"Varm Milk,
perhaps?"*

CAMBRIDGE MILK GLASS



W 85
4½ in. Pull Box & Cover



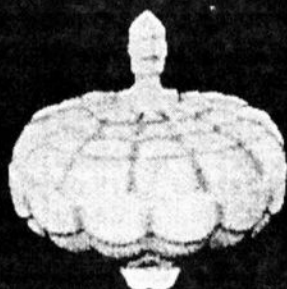
W 86
Honey Dish & Cover



W 87
12 in. Urn & Cover



W 88
5 in. Candlestick



W 89
Candy Box & Cover



W 90
3 oz. Oil. q.s.



W 94
3 in. Swan



W 91
1 liter Candlestick



W 92
1½ in. Cornucopia



W 93
12 oz. Mug



W 95
4½ in. Swan



W 98
4½ in. Swan Candlestick



W 97
8½ in. Swan



W 96
6½ in. Swan

2003 Auction Results

1.	15.00	63.	50.00	128.	220.00	195.	50.00	263.	20.00	331.	25.00
2.	90.00	64.	35.00	129.	230.00	196.	75.00	264.	75.00	332.	105.00
3.	25.00	65.	55.00	130.	220.00	197.	110.00	265.	45.00	333.	25.00
4.	15.00	66.	150.00	131.	100.00	198.	55.00	266.	125.00	334.	50.00
5.	65.00	67.	55.00	132.	175.00	199.	30.00	267.	100.00	335.	65.00
6.	30.00	68.	40.00	133.	25.00	200.	45.00	268.	350.00	336.	185.00
7.	55.00	69.	35.00	134.	45.00	201.	20.00	269.	400.00	337.	20.00
8.	90.00	70.	15.00	135.	45.00	202.	15.00	270.	85.00	338.	75.00
9.	85.00	71.	30.00	136.	55.00	203.	40.00	271.	50.00	339.	115.00
10.	45.00	72.	45.00	137.	425.00	204.	75.00	272.	155.00	340.	25.00
11.	155.00	73.	20.00	138.	30.00	205.	35.00	273.	50.00	341.	25.00
12.	145.00	74.	25.00	139.	25.00	206.	255.00	274.	25.00	342.	45.00
13.	80.00	75.	40.00	140.	65.00	207.	150.00	275.	105.00	343.	10.00
14.	120.00	76.	30.00	141.	85.00	208.	275.00	276.	425.00	344.	35.00
15.	20.00	77.	60.00	142.	250.00	209.	75.00	277.	35.00	345.	55.00
16.	17.50	78.	52.50	143.	400.00	210.	60.00	278.	55.00	346.	65.00
17.	50.00	79.	30.00	144.	80.00	211.	360.00	279.	85.00	347.	35.00
18.	200.00	80.	200.00	145.	175.00	212.	45.00	280.	300.00	348.	75.00
19.	35.00	81.	105.00	146.	80.00	213.	95.00	281.	85.00	349.	10.00
20.	115.00	82.	30.00	147.	105.00	214.	225.00	282.	40.00	350.	175.00
21.	70.00	83.	62.50	148.	160.00	215.	110.00	283.	40.00	351.	45.00
22.	40.00	84.	85.00	149.	95.00	216.	30.00	284.	115.00	352.	135.00
23.	65.00	85.	65.00	150.	100.00	217.	225.00	285.	60.00	353.	45.00
24.	220.00	86.	80.00	151.	105.00	218.	95.00	286.	265.00	354.	30.00
25.	140.00	87.	250.00	152.	140.00	219.	205.00	287.	300.00	355.	90.00
26.	205.00	88.	25.00	153.	80.00	220.	155.00	288.	25.00	356.	140.00
27.	30.00	89.	40.00	154.	110.00	221.	30.00	289.	45.00	357.	65.00
28.	140.00	90.	25.00	155.	20.00	222.	15.00	290.	125.00	358.	260.00
29.	35.00	91.	130.00	156.	25.00	223.	65.00	291.	850.00	359.	50.00
30.	50.00	92.	90.00	157.	25.00	224.	65.00	292.	95.00	360.	20.00
31.	360.00	93.	150.00	158.	120.00	225.	45.00	293.	85.00	361.	65.00
32.	500.00	94.	30.00	159.	70.00	226.	50.00	294.	5.00	362.	350.00
33.	125.00	95.	30.00	160.	150.00	227.	85.00	295.	80.00	363.	105.00
34.	145.00	96.	155.00	161.	85.00	228.	225.00	296.	20.00	364.	325.00
35.	35.00	97.	95.00	162.	20.00	229.	55.00	297.	300.00	365.	40.00
36.	130.00	98.	45.00	163.	55.00	230.	95.00	298.	95.00	366.	115.00
37.	17.50	99.	65.00	164.	90.00	231.	60.00	299.	75.00	367.	25.00
38.	65.00	100.	40.00	165.	100.00	232.	100.00	300.	800.00	368.	425.00
39.	30.00	101.	65.00	166.	1,600.00	233.	25.00	301.	200.00	369.	25.00
40.	270.00	102.	45.00	167.	50.00	234.	35.00	302.	130.00	370.	30.00
41.	5.00	103.	30.00	168.	50.00	235.	85.00	303.	17.50	371.	55.00
42.	45.00	104.	285.00	169.	50.00	236.	200.00	304.	155.00	372.	35.00
43.	75.00	105.	125.00	170.	275.00	237.	45.00	305.	60.00	373.	80.00
44.	85.00	106.	95.00	171.	35.00	238.	65.00	306.	45.00	374.	60.00
45.	375.00	107.	5.00	172.	80.00	239.	45.00	307.	105.00	375.	90.00
46.	30.00	108.	65.00	173.	195.00	240.	85.00	308.	30.00	376.	65.00
47.	100.00	109.	75.00	174.	85.00	241.	20.00	309.	75.00	377.	35.00
48.	200.00	110.	140.00	174a.	90.00	242.	100.00	310.	20.00	378.	100.00
49.	25.00	111.	170.00	175.	80.00	243.	35.00	311.	40.00	379.	95.00
50.	115.00	112.	25.00	176.	20.00	244.	220.00	312.	650.00	380.	40.00
51.	30.00	113.	260.00	177.	65.00	245.	40.00	313.	35.00	381.	20.00
52.	20.00	114.	50.00	178.	60.00	246.	110.00	314.	20.00	382.	60.00
53.	320.00	115.	35.00	179.	190.00	247.	130.00	315.	300.00	383.	10.00
54.	40.00	116.	125.00	180.	25.00	248.	300.00	316.	360.00	384.	25.00
55.	65.00	117.	40.00	181.	10.00	249.	100.00	317.	55.00	385.	100.00
56.	55.00	118.	45.00	182.	25.00	250.	125.00	318.	65.00	386.	170.00
57.	90.00	119.	45.00	183.	75.00	251.	15.00	319.	85.00	387.	180.00
58.	25.00	120.	25.00	184.	60.00	252.	50.00	320.	305.00	388.	35.00
59.	95.00	121.	170.00	185.	65.00	253.	55.00	321.	20.00	389.	110.00
60.	50.00	122.	90.00	186.	50.00	254.	155.00	322.	45.00	390.	60.00
61.	40.00	123.	50.00	187.	55.00	255.	225.00	323.	85.00	391.	90.00
62.	30.00	124.	15.00	188.	110.00	256.	95.00	324.	25.00	392.	100.00
		125.	40.00	189.	30.00	257.	185.00	325.	105.00	393.	195.00
		126.	180.00	190.	45.00	258.	100.00	326.	70.00	394.	170.00
		127.	40.00	191.	150.00	259.	105.00	327.	17.50	395.	75.00
				192.	45.00	260.	160.00	328.	295.00		
				193.	100.00	261.	475.00	329.	280.00		
				194.	65.00	262.	95.00	330.	160.00		

NCC Auction *from page 1*

anxious and competitive buyers each year.

Auctioneer Craig Connelly kept the bidding lively and moved through the over 390 lots of glassware. Winning bids went from a modest \$5 for more common pieces to over \$800 for the rarest pieces. (Complete bidding results are printed to the left)

Bidding was not limited to those present at the auction. As in the past, there have been absentee bids which were quite successful. One of the most notable absentee bids was the #478/479/488 Crystal Cascade 15" Punch Bowl, 21" underplate and 12 5-oz. punch cups (\$500) which were won by an absentee bid and will need to be shipped to their anxious owner. That's an undertaking in itself!

Among the pieces which received competitive bidding and brought high prices were: a Carmen nude cigarette box and cover (\$650); a pair of Amethyst Dolphin candlesticks (\$425); a Windsor Blue Seashell signed bowl (\$425); a rare Peach-Blow crackle flip vase (\$475); a rare Carmen Sandwich Plate with gold encrusted Portia etch (\$850); a rare Crown Tuscan Seashell candy box and cover with Sterling Silver Sea Horse decoration (\$800) and a Royal Blue Nude cocktail (\$400). Many went home with wishes fulfilled while others will return next year to search out that elusive piece of Cambridge glass that may be found at this annual event.

The auction committee of Squeek Rieker, Dorothy Rieker, and Lynn Welker saw their hard work pay off. The proceeds from this auction benefit The National Museum of Cambridge Glass. This year's auction netted sales of nearly \$42,000. From these sales a commission collected on each lot goes to the Museum. In addition, a number of pieces were donated to the NCC by the consignors, with the total auction prices of those lots going to Museum. The NCC says "thank you" to our generous consignors and bidders alike.



The crowd in the midst of auction excitement



A fabulous array of Cambridge Glass awaits anxious bidders!

TIME TO SPREAD THE WORD

It's going to be "*Some Enchanted Evening*" and we are going to have a wonderful Convention, Glass Show and Sale, and Glass Dash. Advertising cards and posters are now available!

If you are going to any shows, antique malls, or know someplace where we need to have our cards and posters be visible, please contact Lorraine Weinman, publicity chairman, and she will see that you receive the information and materials you need. You can reach Lorraine by calling the Museum and leaving a message at 740-432-4245; through the NCC Club at NCC, Inc., P.O. Box 416, Cambridge, Ohio 43725; or by email at NCC_LW@yahoo.com.

Let's spread the word about our special events !!

"Some Enchanted Evening" Convention 2003 Update #4

by Georgia G. Otten

April.....can it be April already? Must be because in this issue of the Crystal Ball you will find your registration form for the 2003 NCC Convention, Some Enchanted Evening. It is now time to register. Remember, it is worthwhile to be an early bird for registration!

There have been rumors, I prefer to say "an excited buzz," about the convention and just what will be taking place. There have not been wide sweeping changes. We hope you will appreciate the ideas which are being initiated. We will be using the museum for one of the programs and also for a morning coffee. We believe this year you will experience two different and exciting food events for Friday and Saturday night.

For the Friday Night Fare, the meal will come in the form of a walk around cocktail party. Elegant, yes? Those who register for the Friday night event will be treated to an assortment of heavy hors d'oeuvre both hot and cold, a mock champagne punch, and dessert. A cash bar will be available as it has been in the past. This event, in the Galleria, is scheduled for an hour and half and will coincide with the Silent Auction in the same area. There will be plenty of room! The annual meeting will follow in the auditorium....everyone down front!

Saturday evening, the banquet, we hope will be a most enchanting dining experience. When you fill out the registration form for this year, you will be asked to choose your entrée. There are three choices and we are most hopeful that one will suit your taste! There will be alternative lighting and music for your dining pleasure.....oh, we hope this will be Some Enchanted Evening! Elegance, most decidedly, is our goal! While there is no dress code for the events, we are hopeful you will dress in a manner that makes you feel elegant! And don't forget, BYOG....bring your own (Cambridge) goblet, if you are so inclined, for your Saturday night beverage of choice.....that's elegant!

Elsewhere in this issue, you will find a complete listing of events for Convention weekend. Take a look at it and make your decisions. Then, please take the time to complete the registration form and get it sent in.....we do not want you to miss out on even one enchanted moment.

If you have any questions or would like to help out convention weekend, please contact:

Shelley at (434) 296-2531 or
slcunicorn@aol.com

Georgia at motten@graphtronics.net

2003 NCC Convention

Motel Information

All of these motels are located in Cambridge at Exit 178, Ohio route 209 off Interstate 70. Remember to mention that you are attending the National Cambridge Collectors Convention. There are limited rooms available at these rates. When they are booked, rates may be higher.

AMERIHOST CAMBRIDGE

Route 209 South
800 434-5800 or
740 439-1505
\$60 single or double,
includes continental bkfst
(indoor pool)

BEST WESTERN CAMBRIDGE

1945 Southgate Parkway
740 439-3581
\$55 single or double,
includes continental bkfst

HOLIDAY INN CAMBRIDGE

2248 Southgate Parkway
740 432-7313
\$69/night, 2 or more nights
\$75/night, 1 night stay

COMFORT INN CAMBRIDGE

Southgate Parkway
740 435-3200
\$60 single or double
includes continental bkfst
Evening snacks in the lobby
(Indoor Pool)

DAYS INN CAMBRIDGE

2328 Southgate Parkway
740 432-5691
\$59 single or double
includes continental bkfst
> This rate may no longer
be available; check with
motel.

BUDGET INN - DEER CREEK

2325 Southgate Parkway
740 432-6391
\$45.95 single or double
weekly rates available
(indoor pool)

See the Calendar of Events on Page 11

SILENT AUCTION NEEDS GLASS DONATIONS

Please help our Club raise money for Museum operations by donating a piece of glass for the Silent Auction at the Friday night Get-together at Convention. We need glass in perfect condition, with a \$25 minimum value. Please contact Linda Roberts at lrobert2@columbus.rr.com or by phone at (614) 337-9775 (evenings) or Barbara Wyrick at bwyr@ee.net

“Some Enchanted Evening”

National Cambridge Collectors, Inc.

30th Annual Convention

June 26 – June 28, 2003

Cambridge, Ohio

Advance Registration Form

Please complete this form and return it no later than June 1, 2003. Make your check payable to National Cambridge Collectors, Inc and mail it with your completed registration form to:

National Cambridge Collectors, Inc.
Convention Registration
P.O. Box 416
Cambridge, OH 43725-0416

Each person registering for the convention must pay the registration fee of \$22.00. The registration fee includes admission to the NCC, Inc. Glass Show and Sale, all educational programs and entitles you to receive a Convention Booklet and Souvenir. Please register for all events you plan to attend, including those offered at no charge. For children under ten years old there is no registration fee. However, they do not receive the Convention Booklet or Souvenir.

Show dealers: If you are a member of NCC, Inc. and wish to participate in other convention activities, registration is \$17.00 (regular registration fee less show admission charge). The benefits are the same.

Please list each person registering separately. Names should be given as you wish them to appear on your name badge. Please provide your NCC, Inc. membership number. If registering for more than 4, please list additional members on a separate sheet.

If you would like to receive an email confirmation of receipt of this registration form, please give us your email address. **This is the only way we can provide confirmation of your registration.**

Name of Conventioneers (please print legibly)	Membership #	First Convention? (circle one)	
_____	_____	Yes	No
_____	_____	Yes	No
_____	_____	Yes	No
_____	_____	Yes	No

Email address _____
(for registration confirmation)

Phone Number (____) _____

over

“Some Enchanted Evening”

*National Cambridge Collectors, Inc.
30th Annual Convention*

Advance Registration Form Page Two

ACTIVITY	FEE	NUMBER ATTENDING	TOTAL
Registration	\$22.00	_____	\$ _____
Registration (show dealers)	\$17.00	_____	\$ _____
Friday Night Fare Walk-About Dinner	\$12.00	_____	\$ _____
Saturday Evening Banquet	\$29.00	_____	\$ _____
Total			\$ _____

This year we will have a choice of entrée for the Saturday Evening Banquet. Please indicate how many of each entrée you would like. *(Please be sure that the number of entrée choices matches the number of conventioners registering.)*

Chicken Marsala _____
 Roasted Pork Loin _____
 Vegetarian Lasagna _____



For Information and Planning Purposes Only

Please indicate how many will attend the following events:

Educational Program on Swans, Thursday afternoon @ Museum _____
 Dutch Treat Dinner, Thursday evening, China Village Restaurant _____
 Museum Coffee & Danish, Friday morning @ Museum _____

Major Field(s) of Cambridge Collecting _____
 (This information will appear in the Convention Packet.)

“Some Enchanted Evening”

National Cambridge Collectors, Inc.

30th Annual Convention

June 26 – June 28, 2003

Schedule of Events

Thursday, June 26

<i>2:00 p.m.</i>	<i>Registration Opens</i>	<i>National Museum of Cambridge Glass</i>
<i>4:00 p.m.</i>	<i>Program – Cambridge Swans</i>	<i>National Museum of Cambridge Glass</i>
<i>6:00 p.m.</i>	<i>Dutch Treat Dinner</i>	<i>China Village Restaurant</i>

Friday, June 27

<i>8:30 a.m.</i>	<i>Coffee & Doughnuts</i>	<i>National Museum of Cambridge Glass</i>
<i>9:30 a.m.</i>	<i>Registration Opens</i>	<i>Pritchard Laughlin Civic Center Galleria</i>
<i>10:00 a.m.</i>	<i>First Timers Orientation Session</i>	<i>Pritchard Laughlin Civic Center Conference Rm</i>
<i>11:00 a.m.</i>	<i>Joint Study Group Meeting</i>	<i>Pritchard Laughlin Civic Center Conference Rm</i>
<i>12:30 p.m.</i>	<i>Trivia</i>	<i>Pritchard Laughlin Civic Center Galleria</i>
<i>2:00 p.m.</i>	<i>Glass Show Opens</i>	<i>Pritchard Laughlin Civic Center Exhibit Hall</i>
<i>6:00 p.m.</i>	<i>Glass Show Closes</i>	<i>Pritchard Laughlin Civic Center Exhibit Hall</i>
<i>6:00 p.m.</i>	<i>President’s Reception</i>	<i>Pritchard Laughlin Civic Center Galleria</i>
<i>6:30 p.m.</i>	<i>Friday Night Fare</i>	<i>Pritchard Laughlin Civic Center Galleria</i>
<i>6:30 p.m.</i>	<i>Silent Auction</i>	<i>Pritchard Laughlin Civic Center Galleria</i>
<i>8:00 p.m.</i>	<i>NCC, Inc. Annual Meeting</i>	<i>Pritchard Laughlin Civic Center Auditorium</i>

Saturday, June 28

<i>7:00 a.m.</i>	<i>Glass Dash Opens – Early Bird</i>	<i>Beech Grove Family Development Center</i>
<i>8:30 a.m.</i>	<i>Glass Dash – Regular Admission</i>	<i>Beech Grove Family Development Center</i>
<i>11:00 a.m.</i>	<i>Glass Dash Closes</i>	<i>Beech Grove Family Development Center</i>
<i>11:00 a.m.</i>	<i>Glass Show Opens</i>	<i>Pritchard Laughlin Civic Center Exhibit Hall</i>
<i>1:00 p.m.</i>	<i>Program – Cambridge/Farber</i>	<i>Pritchard Laughlin Civic Center Conference Rm</i>
<i>2:30 p.m.</i>	<i>Glass ID</i>	<i>Pritchard Laughlin Civic Center Conference Rm</i>
<i>3:30 p.m.</i>	<i>Bring & Brag</i>	<i>Pritchard Laughlin Civic Center Conference Rm</i>
<i>5:00 p.m.</i>	<i>Glass Show Closes</i>	<i>Pritchard Laughlin Civic Center Exhibit Hall</i>
<i>6:30 p.m.</i>	<i>Convention Chair Gala Reception</i>	<i>Pritchard Laughlin Civic Center Galleria</i>
<i>7:00 p.m.</i>	<i>Annual Banquet</i>	<i>Pritchard Laughlin Civic Center Galleria</i>
<i>8:30 p.m.</i>	<i>Banquet Speakers</i>	<i>Pritchard Laughlin Civic Center</i>

Study Groups

The NCC has several study groups; these are the groups currently active and holding regular meetings. Listed below is contact information for these study groups.

If there is no study group in your area and you are interested in starting or joining a new study group, please contact the Crystal Ball or call NCC Study Group Advisor Ken Filippini at (201) 670-0990.

- #13 - **Miami Valley Study Club**
Miami Valley area, Ohio
Larry Everett
db0098@dragonbbs.com
(937) 675-6491
- #14 - **The Cambridge Cordials**
Cambridge, Ohio
Lorraine Weinman
blweinman@hotmail.com
(330) 966-9376
- #15 - **North Texas Cambridge Study Group**
Dallas area, Texas
Scott Pierce
scottpierce1@msn.com
(817) 427-9510
- #16 - **Elegant Glass Collectors**
PA & NJ
Bill Dufft
billnvon@aol.com
- #17 - **The Columbus Wildflowers**
Columbus, Ohio
Barbara Wyrick
bwyr@ee.net
(614) 291-0361
- #18 - **The Cambridge Triangles**
VA, MD, DC
Alex Citron
apcpenguin@aol.com
(434) 296-2531
- #19 - **NE Ohio Cambridge Collectors**
Akron-Canton area, OH
Hilda Pfouts
pfoutshi@aol.com

Newest Study Group:
A new study group is being formed in Florida. The first meeting will be on April 27th.

**Call Linda Gilbert at
(305) 251-2708
for information.**

New Study Groups are currently being organized in southern Michigan and in Colorado.

For more information, call Ken Filippini at (201) 670-0990.

Study Group #17 The Columbus Wildflowers

On Thursday evening, February 6, 2003, the Cambridge Wildflowers met at the home of David Ray at 7:00 pm. Refreshments of relish and cheese trays and cheesecake in assorted flavors were served.

The meeting was called to order by President Linda Roberts, and we began with our Program "Candelabra and Their Parts." David had an absolutely stunning display of Crystal and Moonlight Blue Candelabra, of which a few of the pieces included a pair of tall three light Keyhole Candelabra; the two-light, two-arm Candelabra with the pineapple or Mt Vernon-like center, and an older version with the large leafy center; the Caprice three light Candelabra and many other gorgeous examples. Much of David's research will be published in the May crystal Ball.

After the informative program, other show and tell items included a #104 - 38 ounce Jug etched Marjorie; a #187 Amethyst Caprice Decanter in Farber holder; a #15 Moonlight Blue Caprice 12 ounce Tumbler; a #3011 Nude stem Bud Vase with frosted Vase; and a small Amber optic Globe Vase with a gold Lotus Pheasant decoration.

Under Old Business, we once again had a brainstorming session on how to make a very fun and successful Silent Auction at Convention this year, and we will be asking everyone for glass donations of a minimum \$25 value, to help raise money for the club.

Our meeting adjourned at 9:45 pm.

—respectfully submitted
Barbara Wyrick, Secretary

Study Group #15 North Texas Cambridge Study Group

Members of the North Texas Cambridge Study Group converged on Richardson Texas for the meeting of January 26th. Lucia Bryant was the gracious host and welcomed everyone on Super Bowl Sunday. Our meeting was over before there were any scheduling conflicts!

We adopted the topic of the November NCC meeting - bar ware. We reviewed the article from the Crystal Ball, written by Georgia Otten. Freeman and Jeannie expanded upon the highlights of the article. We used several pages from the 1930-34 catalog to help us understand terms like stein, claret, roemer, hoch, pousse café, sauterne, cordial, brandy, etc. Several members brought examples of shakers, stirrers, decanters, mugs, etc. Blue was the favorite color!

Show and Tell had some interesting items: 3400/38 forest green ball jug with silver overlay, 340 8" 4 part relish etched E732 with band D619, 3025 12 oz Carmen footed tumbler, two 7516 goblets etched E408 (one had E625 gold band), 16" moonlight blue caprice #30 sandwich tray, 1095 Lorna cream & sugar, 1421/139 Royal Blue hat with sticker, and a 1338 forest green triple candlestick.

The Metroplex Glass show will be March 9-10. We agreed that our next meeting would be over lunch on March 9. This would allow time for people to attend the show and then join us for lunch. We decided our April 27 meeting topic would be candle holders.

Submitted by Freeman Moore

Study Group #16 Elegant Glass Collectors

The meeting of January 26, 2003, was called to order at 2:00 pm at the home of Ken and Jane Filippini.

Ken started the meeting off with a gorgeous and very informative program on Rose Point. Not only were the origins of the pattern discussed but also examples of Crystal as well as Black, Carmen, Amber, and Royal Blue Rose Point items were displayed. Some of the rare items on display were a rectangular liquor bottle, black urn vase, carmen goblets, amber center bowl with single key candleholders, and many other

beautiful items. Also examples of Wallace Sterling, and Pope Gosser china were shown in the Rose Point pattern.

Old Business —

Fund Raising: a discussion was held relating to a Study Group project. The project will be a recreation of the Cambridge Museum. Possible choices which were discussed include, Picture This by Margaret, costs were approx. \$15 for the plain and \$28 for cut out.

Cats Meow costs were approx. \$140 flat fee to start, art charges depends on colors used; could be anywhere from \$10-\$12 on plain and \$15-\$20 on cut out. Minimum order is between 90 to 100.

We would need them to be available for convention, where they could be sold for approx. \$25.00. Sample would not be available before the auction. Also how much would go to the NCC and Study Group? Everything would go into Study Group treasury and donation made to NCC from there. The Study Group members would share the initial outlay and would be reimbursed.

Convention—

The Miami Study Group would like another Study Group to take over the book sale table on Fri and Sat. Members going to the convention said they could help but not take over the responsibility.

Ken would like our study group to create a program to help other Study Groups put displays in their local libraries on Cambridge Glass. We could possibly put together an informational guide for the web site. Myrle Scott and Ken graciously volunteered to do this in the near future.

Harrisburg Show—

Since the ad already advises that NCC will be present at the upcoming March/April show; the group has no choice but to continue to set up one more time. The display will be barware. After this, we have decided not to do it as the sales from the booth are diminishing. This show is mainly pressed glass with fewer and fewer elegant glass dealers. The group will perhaps put its efforts into the NCC display at the White Plains Show.

The next meeting will take place tentatively on March 15, 2003 at the home of Gail and Paul DuChamp.

Respectfully submitted,
Lori Kratochvil

Michigan Study Group?

Are there other collectors out there who would be interested in organizing an NCC study group in Michigan? If so please contact Musette Collins at 517-552-0852.

Study Group #14 The Cambridge Cordials

On Saturday, February 22, the Cambridge Cordials study group met at the Museum for a planned work session. This meeting turned into an all-day event, starting at 10:00 a.m. and ending at 7:30 p.m. Members present were: Cindy and Mike Arent, Rich Bennett, Carl Beynon, Sharon and Joe Miller, Jeff Ross, Mary Welker, and Lynn Welker. David Ray was a Cordials' guest. Jill Ross brought in a delicious lunch to the hard-working group.

Some of the workers set to painting rooms of the Museum while others worked on glass inventory and cleaning of cases in preparation for the April opening of the Museum.

Other Museum work days will be planned as needed in March and April.

Study Group #17 The Columbus Wildflowers

On Thursday, March 6, 2003, the Wildflowers met at the home of Barbara Wyrick at 7:00 pm. Refreshments of Cajun crab and salmon roll-ups, relish tray, and pecan and key lime pies were served.

Our meeting was called to order by President Linda Roberts. Under Old Business, our study group revisited the topic of how best to coordinate the Silent Auction at the Friday night get-together at Convention this year, while integrating suggestions from the NCC Board. We will be advertising in the Crystal Ball for glass donations in perfect condition with a minimum value of \$25.

We set our schedule for the next two meetings. April 4th will be at the home of Ken and Jackie Nichol and the topic will be "Auction Finds" (including anything we pick up at the Smith auction the week before). We also talked about everyone bringing a list of "Anything you need to complete a set - that elusive piece you're always looking for," and perhaps another group member might even have a piece to sell or know where

to find one (could we be so lucky??) Our May 2nd meeting will be at the home of Linda Speakman with the topic "Strange or Oddball Cambridge Items."

Our Program this month was "Unusual Cambridge Etchings," and Barbara passed out a handout of the named Cambridge Etchings by date of their first appearance (taken from the Etchings catalogue). A display of a variety of etchings was grouped by decades, so we could determine if there were patterns and themes to the various time periods. Examples included Marjorie in the 1910's; Adams, Dragon, Peacock, Betty, Cleo, and Classic in the early 1920's; Willow, Hunt Scene, 704, 732, and 731 in the Late 1920's; Gloria, Rose Chintz, Valencia, and Rosepoint in the Early 1930's; Laurel, Blossomtime, Lily of the Valley, Wildflower, Chantilly, Candlelight, Bordero and Chintz in the Mid 1930's; Wheat in the 1940's; and American Beauty Rose and Butterfly in the 1950's.

Study group members added loads of unusually etched pieces for show and tell and discussion. Some of these included a Crystal Ice Bucket with an Adams etch that differed somewhat from the book etching; a Rose Marie Candlestick; an Amber Tulip etched Tumbler and Pitcher set; the "Cockatoo" Plate from the late 1920's; an Amber Ice Tub etched 727; Tally Ho Ice Bucket with unusual Grape etching that did not match any of the book grape etchings; two Crystal decagon Ice Buckets, with two different variations of the Elaine etching; a Firenze covered bowl; a small Chantilly Vase with sterling base; a Willow Blue decagon handled Platter with an etch, a cut and a very unusual faceted edge (signed); an Emerald #3400 Vase produced in the 1940's with a #521 etch where the shape and color and etching on the vase were not known to have been produced in the same time period; a Crystal Decanter with gold encrusted Grape etch; a Gold Krystal Bowl etched Portia; and a Crystal gold edged Ice Bucket with etched Lotus gold floral design. Seeing so many etchings and the anomalies concerning many of them was fascinating.

Our meeting adjourned at 10:30 PM. Our next meeting will be April 4th. New members in the Columbus, Ohio area are always welcome and can contact Barbara Wyrick at bwyr@ee.net

—respectfully submitted
Barbara Wyrick, Secretary

Report from the Southeast

by Fleur de Lys Healy

I have put off sending this because I am so very sad over the ending of the Dixieland Heisey Club's October show in Marietta, Georgia . There was always so much Cambridge glass, parking was great, the site was easy to find and wonderful club members were there helping all who came. I am sorry to report it will be no more.

The Glassaholics' show in Lakeland at the end of October was wonderful as usual; they made certain that all attendees were aware that NCC was there with books, membership information and Scotties. Saw member David Lake and his lovely wife Kathy who brought friends to the show. There were unusual pieces of Cambridge including Rosepoint, Crown Tuscan, Everglade, Caprice and Apple Blossom. It's a show NCC members in the area should add to their must-see list.

Speaking of must-see shows, the January show in Sanford was full of Cambridge as usual. Many members who spend part of the coldest months in Florida came by the table to say hi including Evelyn and Bob Buenting, John Jackson and his brother Gary, Mark Nye and others. Millie Downey did another of her very creative displays. Who would have thought that reamers could be so beautiful when arranged with citrus on a pretty table cloth?

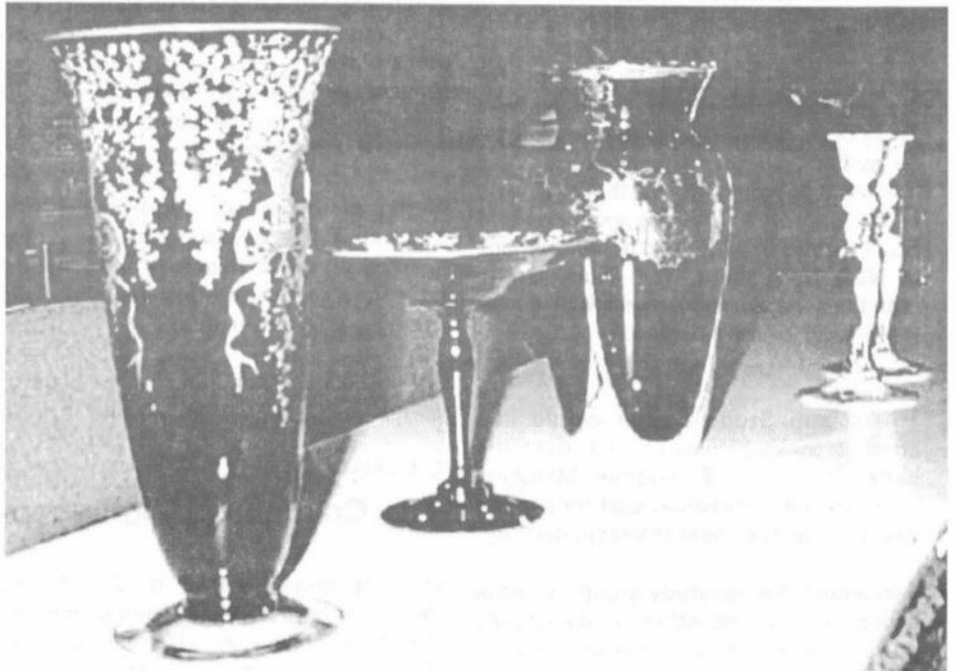
The Ft. Lauderdale show was very interesting. I attended as a visitor only and saw member Linda Gilbert. She and some others are trying to get a study group going down there. Hope they succeed.

The Sparkling Clearwater Depression Glass Club's show February is another not to be missed. They have a beautiful site at The Harborview Center. They did a special display showing the location of the glass factories . Neat !! Saw Shirley and

Carl Beynon and Evelyn and Bob Buenting. Evelyn spelled me at our tables and was a great help. Saw some interesting glass including some Cambridge oil lamps I had only seen in catalogue reprints. Really worth the trip from Orlando . If you get over that way be sure to go hungry— Pickles Plus Cafe in the same building has great breakfasts — an important thing when you leave home by 5:00 am. None of these shows are the

size of the White Plains show , but sometimes a smaller show is at least as good as the bigger shows.

We also gained some new members and let others know about our club and great new museum. I had so many inquires about both from people returning to the north in late spring and families planning summer trips. I think we'll see many of them in Cambridge before long.



Above: Show & Tell at the March Quarterly Meeting
Below: Mark Nye (with his new moustache) at the Auction



Museum News for April

by **Condy Arent, Museum Chair**

By the time this issue of the Crystal Ball reaches your door, The National Museum of Cambridge Glass will be open for the season. Since last month, additional projects have been completed and we have opened in great shape!

On Saturday, March 8, work groups were busy in different areas of the Museum. Linda Roberts, Barbara Wyrick and Georgia Otten arrived with glass to place on display in the Feature Display Room. Included in the room this year are unusual enamel decorations, Charleton pieces and a wonderful collection of items etched Firenze. Linda, Barb and Georgia worked throughout the day and created a very beautiful arrangement. Each of the three feature rooms have now been completely changed to add interest for people who came to the Museum in 2002 and will be visiting again this year.

The goal of NCC is to educate the public about Cambridge Glass and how it was produced. To further the mission, Willard Kolb was rearranging memorabilia in the History of Glassmaking area. New to the exhibit this year will be a model of the Jamestown glassmaking furnace which came from The Cambridge Glass Company. The visual explanation of the etching process will now include a mannequin making the actual print and two ladies working on the next two steps in the process. Willard will also be writing brief descriptions for several of the tools already on display.

MEMBERS ONLY

Visit the "Members Only" section of the NCC's website at cambridgeglass.org/NCCmembers

Features available only to NCC Members include:

- Reprints of Research Articles
- Minutes of Board Meetings

User name: NCC
Password: TriangleC

The National Museum of Cambridge Glass has been chosen by the Cambridge Area Chamber of Commerce as a recipient of the 2003 "Snazzy Award". On March 25, Lynn Welker, Carl Beynon and I will be accepting the award on behalf of the National Cambridge Collectors, Inc. The award will be on display in the Museum.

We look forward to seeing you in June! The Museum hours are; April through October, Wednesday - Saturday, 9:00 a.m. to 4:00 p.m. and Sunday noon - 4:00 p.m. (closed Easter and July 4). If you happen to be in the area on a day that the Museum is not open and would like a tour, please contact us ahead of time and we will make every effort to accommodate your schedule.

National Library Project

NCC Board member and Study Group Advisor Ken Filippini has been tapped to head up a new outreach project. The National Library Project has been established to support local study groups and individual members in getting displays of Cambridge Glass into public libraries around the country.

Many public libraries have display cases, which are made available for educational purposes. In the few locations where Cambridge Glass has been displayed, there has been a noticeable increase in interest, and new members have joined the NCC. That's why the decision was made to expand the idea into a nationwide project.

If you or your Study Group think this might be a good project for you, contact Ken Filippini for more information. NCC printed materials will be made available for your display.



Recent Donations to the NCC Museum

Amethyst Cordial Set, donated by Marybelle Teeters.
CT Urn with gold Diane, #668 Goblet (in 1903 Catalog),
Wedgewood ram's Head Bowl, Twin Salad Dressing Bowl with
star cutting & gold etch, and a Summit Glass Cobalt Swan
reproduction, all donated by The Cambridge Cordials Study Group

Books and Merchandise Available from NCC

VIDEOS

"The Crystal Lady" \$15.00

A video copy of an original Cambridge Glass Co. promotional film showing the making of a goblet in the Cambridge factory. 25 minutes, B&W.

NEW: Grand Opening Video \$15.00

A high-quality video record of the Grand Opening of The National Museum of Cambridge Glass. 25 minutes, Color.

SALT & PEPPER TOPS

Salt & Pepper Tops \$6.00 per pair

Polycarbon plastic, will fit most Cambridge shakers such as Rosepoint footed and flat-bottom shakers. Also fit Heisey Rose, Saturn, Plantation, Crystolite and some Orchid. Will fit some Anchor Hocking and Candlewick.

Order 10 or more pairs, pay only \$5 per pair

Books by Gene Florence

Very Rare Glassware (3rd Series)	\$24.95
Very Rare Glassware (5th Series)	\$24.95
Very Rare Glassware (6th Series)	\$24.95
Elegant Glassware (8th edition)	\$19.95
Glassware of the 40s-50s-60s (4th edition)	\$19.95
Glassware of the 40s-50s-60s (5th edition)	\$19.95
Stemware (Cordials) 1920s-1960s	\$24.95

CONVENTION FAVORS

1995 Cranberry Ice Cascade Goblet	\$5.00
1998 Yellow Iridized Cascade Goblet	\$5.00
2000 Carnival Mt. Vernon Juice	\$5.00
2001 Carnival Mt. Vernon Juice	\$5.00
Cambridge Prism Sign, Mint Julep	\$15.00

CONVENTION BOOKLETS

Convention Booklets \$5.00/year

- All NCC Conventions 1994 - 2001 •

Set of all 8 years \$25.00

(you save \$15)

**NCC Tote Bags
\$10.00**

SCOTTY DOGS

Red Scotty Dog Bookends are still available! \$100.00/pair
2000 fund raiser for NCC Museum; made in original Cambridge molds by Mosser. Marked NCC 2000.

NEW NCC LOGO PINS

Show your pride in being a Cambridge collector and a member of NCC.

Only \$5.00 includes shipping



Ordering Information

None of the items in this month's issue are eligible for member discounts.

SHIPPING & HANDLING RATES:

First item	\$3.00
Each additional item	\$1.00

SPECIAL SHIPPING:

- Scottie Dogs: \$10/pair for shipping
- Salt/Pepper Tops: \$3 shipping for any size order
- Jadite Tumblers: \$3 each, \$10 for a set of six
- Logo Pins: shipping included in price

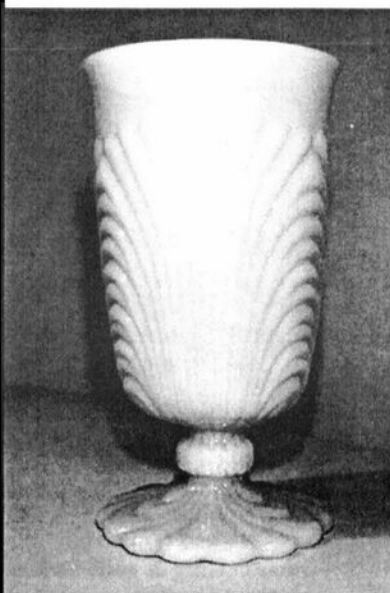
**OHIO RESIDENTS:
PLEASE ADD 6.5% SALES TAX**

Payments by check or money order only.

Send orders to:
NATIONAL CAMBRIDGE COLLECTORS, INC.
PO BOX 416
CAMBRIDGE, OH 43725

*Be sure to include your complete shipping address and phone number.
Thanks!*

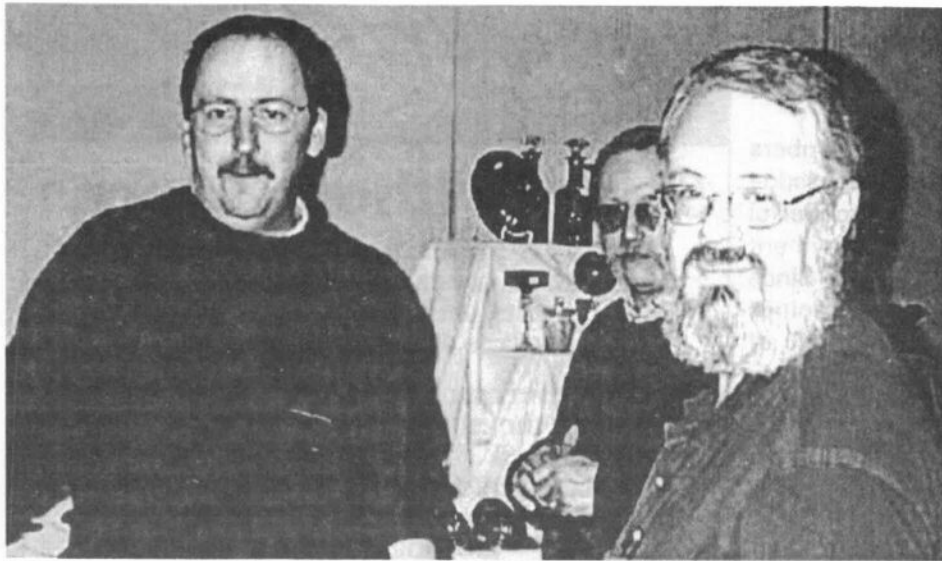
Caprice Jadite Tumblers NCC's 2002 Project



**A Happenin' Color!
Cool, Retro Styling!**
"Martha would want you to have these!"

\$20 each
Set of 6 for \$100
plus shipping charges of
\$3 each or \$10 for the set of 6

Made for the NCC by Mosser Glass
Marked on the bottom:
NCC 2002



At the Auction



Japonica Will Be Reproduced

by Alex Citron, Executive Editor

We have just learned of plans by The L.K. Miller Glass Company to reproduce Cambridge's famous Japonica Line as part of the company's "World of Glass" series. The company, based in San Ysidro, California, has previously reproduced antique glassware by Tiffany, Steuben, Galle, Orrefors and Fostoria.

Miller Glass is manufactured in Taiwan, Thailand or Sri Lanka, and is derided by serious collectors as cheap, inferior and ugly.

Cambridge collectors can only be dismayed to learn of Miller's plans to reproduce our beloved Japonica, considered by many collectors to be the most beautiful and desirable of all Cambridge Glass.

Initial plans call for the introduction of four pieces of the so-called Japonica: a small, bulbous vase, similar to the Cambridge #1309; a taller, footed vase like Cambridge's #278; a broad, low bowl and a tall decanter.

Miller Glass hopes to expand the line, depending upon sales. The new "Japonica" will be produced in ruby, cobalt, plum and medium green. Prices are expected to range from \$29 to \$59 per piece.

Miller Glass expects their new line of "Japonica" to arrive in finer stores and museum shops by September of this year.

Oh, by the way...April Fool.

Back Issues of
The Crystal Ball
are available

Sold by the year:
1999 • 2000 • 2001 • 2002
\$5.00 per year
see page 18 to order

NOW AVAILABLE

Table of Contents for
The Crystal Ball
Issues #69 - #320
(Jan 1979 - Dec 1999)

Only \$2.00

See page 18
for ordering information

Upcoming Glass Shows

April 26-27:
Glass Show & Sale
Lexington, MA
Call (617) 387-0017
Email: info@glassresearch.com

June 19-21:
Heisey Collectors Convention
OSUN/COTC Campus
Newark, OH
Call (740) 345-2932
www.heiseymuseum.org

July 11-13:
NDGA Convention & Sale
Claremore, OK
www.ndga.net

September 20-21:
Washburn's San Antonio Show
Live Oak, TX
Call (210) 599-0635
Email: Washburnk@aol.com

The Century Club - 2003

by Sharon Miller

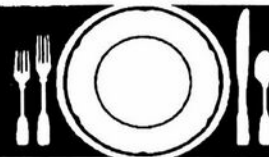
Thanks to the generous support of 256 NCC members and associates, the initial year of the Century Club pledge drive raised a little over \$27,300. This is a wonderful tribute to the membership at large. The Endowment Fund will be increased by approximately \$13,650. Since the club did not receive the matching Federal Humanities Grant, the board proposed that the remaining 50% of the monies received from the Century Club be put aside for the roof replacement project. The new roof will cost about \$34,000 and will probably be needed sometime in 2003 or early 2004.

The concept behind the Century Club is to provide members the opportunity to pledge \$100 as a gift to the museum with the understanding that the monies pledged will be shared between the Endowment Fund and a worthy museum project. Many members ask how they can help support the museum and display areas. A donation to the Century Club is a perfect solution! The goal for the expenditure of the monies collected is pre-approved by the board, so you know exactly how your contribution is being spent. All Century Club funds are kept in a separate escrow account until year end. Century Club funds collected for 2003 will be divided 33% to the Endowment Fund and 66% to the roof replacement project.

The requirements for renewing or joining the Century Club are remarkably simple. The cost is \$100 per person whether you are a master member or an associate. Each person will have their name engraved on a small plaque and placed on the Century Club wall in the foyer of the museum. Your contribution is tax deductible! You will be receiving a letter and pledge card soon.

In the March 2003 issue of the Crystal Ball, the listing of Century Club donors for 2002 was short by two important members: Mrs. Martin Coppo and Rose MacConkey. We thank them, and apologize for their earlier omission.

**HAVE YOU MADE YOUR MOTEL
RESERVATIONS FOR CONVENTION?
WHY NOT?
THE SPECIAL-RATE ROOMS ARE
GOING FAST... GET YOUR ROOMS
RESERVED NOW!!!**



Stems Without Thorns

As the world's largest supplier of old & new china, crystal, silver and collectibles, Replacements, Ltd. has more than 700 different patterns of Cambridge crystal.

And however much we enjoy selling pieces that were once thought irreplaceable, we love buying them as well. Thanks to people like you, our crystal inventory currently numbers in the hundreds of thousands, and the numbers keep growing every year.

So, if you've been unsuccessfully searching for that elusive piece of Cambridge — or any other type of fine crystal — call us for a free list of pieces available in your pattern. And, if you're looking to sell pieces you currently have, we can help you there, too.

REPLACEMENTS, LTD.
China, Crystal & Silver • Old & New

1-800-REPLACE
(1-800-737-5223)

1089 Knox Road,
PO Box 26029, Dept. CB,
Greensboro, NC 27420
www.replacements.com

DEALER DIRECTORY

THE DEGENHART PAPERWEIGHT AND GLASS MUSEUM, INC.

P.O. Box 186
Cambridge, OH 43725-0186

Intersection of US 22 & I-77
Phone 740-432-2626

GREEN ACRES FARM

2678 Hazelton Etna Rd.
Pataskala, OH 43062
(State Route 310 North)

Sat & Sun 1-7 pm 740-927-1882
Antiques, Crystal Glass & Collectibles

ALADDIN LAMP BOOKS

Free List
Figurine Lamps Wanted
Bill & Treva Courter

3935 Kelley Rd. Kevil, KY 42053
Phone 270-488-2116 FAX 2700-488-2055

Madison Avenue Antiques

1851 Madison Avenue
Council Bluffs, IA 51503

Phone: (712) 388-2192

Just east of I-80 at exit 5

Antiques & Collectibles - 100+ Dealers

Open Daily 10 am - 8 pm



DEALER DIRECTORY

When writing to these dealers, please enclose SASE

DAUGHERTY'S ANTIQUES
Jerry and Shirley

Antiques and Collectibles • Mostly Glass
www.daughertys-antiques.com

Shows & Mail Orders 2515 Cheshire North
(402) 423-7426 evenings Lincoln NE 68512

Milbra's Crystal Buy & Sell
Replacement and Matching
Specializing in
Cambridge,
Fostoria, Heisy
and others.

Milbra Long (817) 645-6066
Emily Seate (817) 294-9837
PO Box 784
Cleburne TX 76033

E-mail: longseat@flash.net

THE GLASS URN
456 West Main Street, suite G
Mesa, AZ 85201 480-833-2702
480-838-5936

Mail Order Shows Open Shop

CAMBRIDGE, FOSTORIA, HEISEY, etc.

THE TEAM
ESTATE SALES
Liquidations • Appraisals
Consignments • Senior Services
Estate sales with some style and a bit of flair
ED TUTEN 7007 McVay Place
901-758-2659 Memphis, TN 38119
www.teamestatesale.com

THE GLASS CUPBOARD
P.O. Box 652
West End, North Carolina 27376

Marcia Ellis Cambridge Show
910-673-2884 and Mail Order

FINDER'S ANTIQUE HOUSE
3769 Highway 29 North
Danville, VA 24540

(434) 836-6782

Cambridge • Heisey • Duncan • Fostoria
Open Wed - Sat 11:00 to 5:00 (seasonal hours apply)

Monday thru Saturday 10 - 5:30 Sunday 12 - 5:50

Bogart's Antiques
BUY - SELL - APPRAISE - REFINISH
CANE & REED CHAIRS - CLOCK REPAIR

Jack & Sharon Bogart State Route 40
740-872-3514 shop 7527 East Pike
740-826-7439 home Norwich, OH 43767

BAKER FAMILY MUSEUM
805 CUMBERLAND ST.
CALDWELL, OHIO 43724

740- 732-6410
Mon & Thurs 9-4; Fri - Sat 9-5
Call for Sunday Hours

CRYSTALLINE COLORS
Buy, Sell and Appreciate
Cambridge and other Elegant Glass

I Love Cambridge

Lynne R. Franks 216-661-7382
Ohio & western PA Antique Malls

CRYSTAL LADY
Thurs. - Sat. 11-5
1817 Vinton St. Omaha, NE 68108
Bill, Joann and Marcie Hagerty
Shop 402-341-0643 Home 402-391-6730

Specializing in Elegant Glass & Collectibles
www.crystalladyantiques.com

Storck's Antiques
Rick & Joyce
Antiques & Collectibles • Glass & Pottery
Specializing in Fenton, Imperial & Cambridge
Shows & Mail Orders • Storck1@aol.com
Greenfield, MN 55373 • (763) 477-6415

 **Mother Drucker's**
Penny Drucker
Specializing in Elegant Glassware
Shows and Mail Order
P.O. Box 50261 Phone: 949-551-5529
Irvine, CA 92619 888-MDRUCKER
Website: <http://motherdruckers.com>

Deborah Maggard, Antiques
Specializing in Cambridge Glass,
American Hand Made Glass & Victorian Art Glass

Please stop and see our extensive collection of
Cambridge Glass at Riverfront Antique Mall in
New Philadelphia, Ohio (I-77, exit 81)
Booths 805 and 812
You won't be disappointed.

We buy one piece or entire collections.
Please contact me at 440-247-5632
and leave a message, or e-mail at
debmaggard@worldnet.att.net

P.O. Box 211
Chagrin Falls, OH 44022

JUDY'S ANTIQUES
Judy Bennett
422 S. Ninth Street (corner of Jefferson)
Cambridge, Ohio 43725

Business (740) 432-5855
Residence (740) 432-3045


CAMBRIDGE GLASS MY SPECIALTY

YOUR AD COULD BE HERE
ADVERTISE YOUR SHOP OR SERVICE
JUST \$24 A YEAR
SEE INSIDE FRONT COVER FOR DETAILS

THE JONES GROUP
Cindy Jones
Buy and Sell Cambridge Glass

650 Riverside Drive
Sleepy Hollow, NY 10591

914-631-1656 or E-mail Caprice0@aol.com

 **Mary Jane's Antiques**
Early American Pattern Glass
Depression Era Items

2653 Burgener Drive 217-422-5453
Decatur, IL 62521 mjthumes@aol.com

YOUR AD COULD BE HERE
ADVERTISE YOUR SHOP OR SERVICE
JUST \$24 A YEAR
SEE INSIDE FRONT COVER FOR DETAILS

GATEWAY ANTIQUE MALL, INC.
JUST NW OF MINNEAPOLIS-ST. PAUL, MN
Next to Super 8 in Rogers, MN
(I-94/I01 intersection)

85 Dealers • 7 days; 10 - 6 • 612-428-8286
ELAINE STORCK, OWNER/DIRECTOR

ISAACS ANTIQUES
(740) 826-4015

See our booths in Penny Court Mall in
Cambridge and at White Pillars Antique Mall
(Route 40, one mile west of
I-70 Norwich, OH • Exit #164)

PENNY COURT MALL
637 Wheeling Avenue
Cambridge, Ohio

100 Booths 15,000 sq ft

HOURS: Daily 10-6 Sunday Noon-5
Closed: Easter, Thanksgiving, Christmas

Call for other holiday hours 740-432-4369

MARGARET LANE ANTIQUES
2 E. Main St. New Concord, OH 43762
Lynn Welker (740) 826-7414

Cambridge Glass Matching Service
Hours: Mon-Fri 10-12 AM, 1-5 PM
or by appointment

DEXTER CITY ANTIQUE MALL
P.O. Box 70 Dexter City, Ohio 45727
(740) 783-5921

Located on Ohio Route 821
between exits 16 & 25 of I-77
Just 30 minutes south of Cambridge, OH

NCC Sells Books, Displays Cascade in Texas

by Kent Washburn

The National Cambridge Collectors were well represented at Washburn's San Antonio American Glass Show February 8 & 9, 2003, as Jeannie and Freeman Moore of Flower Mound, TX, were responsible for both a wonderful display of Cambridge glassware and an NCC book table.

Front and center by the show entrance, the Moores set up and staffed a booth providing membership information and selling a variety of books and publications on Cambridge Glass.



The beautiful display of Cambridge Cascade in San Antonio

As always, Jeannie and Freeman were excellent emissaries for the NCC, answering untold numbers of questions for collectors in attendance, and were always quick with a smile and an offer to help. I received many compliments on their substantial knowledge of Cambridge glass,

In addition to the National Cambridge Collectors' booth, the Moores set up a wonderful display, titled "Saturday Luncheon", of Cambridge Cascade. A fabulously sparkling and eye-catching display, which included the Cascade punch set. The display from Jeannie and Freeman's collection elicited numerous compliments from collectors in attendance, and inspired new collectors for that pattern.

It is my fervent hope that the excellent rapport and relationship between the National Cambridge Collectors and the San Antonio Glass Show continues for many, many years to come.



Jeannie & Freeman Moore, Karen & Robert Gallagher

NATIONAL CAMBRIDGE COLLECTORS, INC.
P.O. BOX 416
CAMBRIDGE OH 43725-0416

<http://www.cambridgeglass.org>
E-mail: NCCcrystalball@aol.com

FIRST CLASS MAIL
US POSTAGE
PAID
PERMIT No. 3
CUMBERLAND OH 43732

FIRST CLASS MAIL

Membership Renewal Notice:
If the date above your name
is 04-03, this is your last issue,
and your NCC Membership has
expired.
Please renew today.