

Cambridge Crystal Ball



Published monthly by National Cambridge Collectors, Inc.
to encourage and report the discovery of the elegant and boundless product of the
Cambridge Glass Company of Cambridge, Ohio

Issue No. 364

August, 2003

Carl Beynon Receives Inaugural Phyllis Smith Award

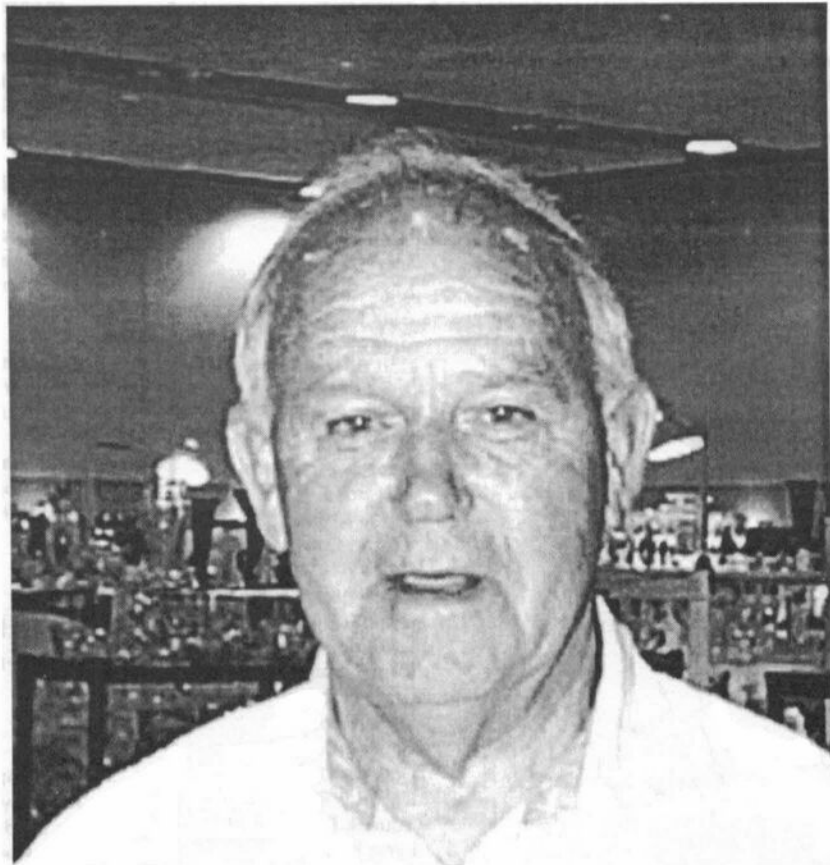
The Board of Directors has bestowed the first annual Phyllis Smith Award on Carl Beynon. The Board's choice, which was unanimous, honors Carl for his dedication, commitment, enthusiasm and exceptional service to the NCC.

The Phyllis Smith Award was established in 2002 to recognize outstanding volunteerism by an NCC member who is not on the Board of Directors.

Carl Beynon has been a member of NCC since 1984, and has served as Facilities Chairman since 1994. In that capacity he has been responsible for the maintenance of our museums, both old and new. But Carl has consistently gone far beyond the simple parameters of his job. He has become known as the NCC's "go-to" guy; the man who will always go the extra mile and is always ready to lend a hand.

Cindy Arent, Museum Committee Chair, says of Carl, "When I need something done in a hurry, Carl's right there to help me. Carl has spent countless hours at the museum over-

continued on page 7



Also in this issue... 2003 Convention Report • Flip Vases

National Cambridge Collectors, Inc.
PO Box 416
Cambridge, OH 43725-0416

Please notify us immediately of any address change.

Contacts:

President Rick Jones (914) 631-1656
Secretary Larry Everett (937) 675-6491
Crystal Ball Editor Alex Citron (434) 296-2531

NCC Museum (phone) (740) 432-4245
(fax) (740) 439-9223

Membership

Membership is available for individuals at \$20.00 per year, and an additional \$3.00 for associate members (12 years of age and older, residing in the same household). Of the \$20.00 dues, \$14.00 is considered the cost of a one-year subscription to The Cambridge Crystal Ball. All members have voting rights, but only one issue of The Crystal Ball will be mailed to each member household.

Multi-year memberships are available:
2 years for \$38.00; 3 years for \$56.00.

**2003-2004
OFFICERS AND COMMITTEE CHAIRS**

President Richard D. Jones
Vice-President Tarzan Deel, Jr.
Secretary Larry Everett
Treasurer Dennis Snyder
Sergeant-at-Arms Charles Upton

.....

Acquisitions	Lynn Welker
Archives	Mark A. Nye
Budget & Finance	Mike Strebler
By-Laws	Alex Citron
Endowment	George Stamper
Facilities	Carl Beynon
	Joe Miller
Grants & Fundraising	Sharon Miller
Long-Range Planning	Mike Strebler
Member Services	George Stamper
Membership	Jeff Ross
Museum	Cindy Arent
Nominating	Tarzan Deel, Jr.
Program	David Ray
Projects	Bill Hagerty
Publications	Mark A. Nye
Publicity	Lorraine Weinman
Study Group Advisor	Ken Filippini
Technology	Linda Roberts
Webmaster	Linda Roberts
2003 Convention	Shelley Cole Citron
	Georgia Otten
2003 Auction	Dorothy Rieker
	Squeek Rieker
	Lynn Welker
2003 Glass Show & Sale	Mary Beth Hackett
	Joy McFadden
2003 Glass Dash	Larry Everett
	Susan Everett

Board of Directors:

Cindy Arent; Tarzan Deel, Jr.; Larry Everett;
Ken Filippini; Rick Jones; Sharon Miller;
Dennis Snyder; George Stamper; Mike Strebler;
Charles Upton; Lorraine Weinman; Lynn Welker

Cambridge Crystal Ball

The official publication of National Cambridge Collectors, Inc., a non-profit corporation with tax-exempt status. Published monthly for the benefit of its members. All rights reserved; reproduction in whole or part without written permission of National Cambridge Collectors, Inc., and the author is prohibited.

Executive Editor	Alex P. Citron
Research Editor	Les Hansen
Advertising Manager	Jeannie Moore
Circulation	Sharon & Joe Miller

Advertising Rates

Display Advertising (camera-ready):
Full Page \$50.00
3/4 Page \$40.00
1/2 Page \$30.00
1/4 Page \$20.00
1/8 Page \$15.00
(Add \$5.00 for each photograph)

Classified Advertising:
10 cents per word; \$2.00 minimum
(Abbreviations and initials count as words)

Dealer Directory:
\$24.00 for twelve-month contract
Text limited by standard box size (see page 19)
Includes FREE listing on NCC website

- Payment in full must be received before advertising will be run.
- Cambridge Crystal Ball and National Cambridge Collectors, Inc., assumes no responsibility for items advertised and will not be responsible for errors in price, description or other information.
- Advertising copy may be submitted to us by e-mail or regular mail as follows:

Ad copy may be sent by e-mail to NCCcrystalball@aol.com, and must be sent by the 10th of the month preceding publication. Ad will not be run until your check has been received at our PO Box.

Ad copy may be sent by regular mail, along with your check, to our PO Box. Copy sent this way must arrive at our PO Box by the 1st of the month preceding publication.

**Submissions to
The Crystal Ball**

By mail: P.O. Box 416 Cambridge, OH 43725
E-mail: NCCcrystalball@aol.com

Deadlines:

Ad copy by e-mail: 10th of preceding month
Ad copy by regular mail: 1st of preceding month
Articles, study group reports, etc.: 10th of preceding month

MEMBERS ONLY

Visit the "Members Only" section of the NCC's website at cambridgeglass.org/NCCmembers

Features available only to NCC Members include:

Reprints of Research Articles
Minutes of Board Meetings

User name: NCC Password: TriangleC

President's Message:



The Amazing Anatomy of an Acquisition

The National Museum of Cambridge Glass has succeeded in a major acquisition this past month ... two lots from eBay showing the entire etching process in Rose Point. The first lot includes five bowls at various points of the manufacturing process and the second is a series of twelve goblets. The Museum previously had a set of these goblets on loan. After the flood, they went back home to their owner. We do currently own one of the bowls in this series, and it is on display at the museum.

When these bowls surprisingly arrived on eBay just before our annual Convention, they certainly stirred considerable interest. Many people, in turn, played a role in the acquisition process, and from start to finish, the whole acquisition process lasted just under two weeks. Lightning speed these days!

The bowls stimulated a lot of interest, not just unto themselves but with the teasing lead-in that there was a companion set of goblets that would soon be listed. Many major collectors began to lick their chops, savoring the opportunity to add such historic items to their collections. The buzz had begun ...

While the eBay auction got under way, collectors began arriving in Cambridge for Convention. The first auction (the bowls) was set to close the Wednesday of Convention week. The talk began. Who was going to buy them? Should the club acquire them? How would we pay for them? Who would bid on them? Could we get the word out to other collectors that the club was going to go for them?

At the center of this dialogue were our Acquisition Chair Lynn Welker and our Museum Chair Cindy Arent. As the days progressed, they became even more determined to see this bowl lot, and the subsequent lot of goblets,

become the property of NCC. This infectious enthusiasm began to spread rapidly. Those who had wanted to acquire the sets for their personal collection (yours truly included) began to acquiesce and focused on the museum's objective.

The first auction was ending and we had to make some decisions. The second lot was also now listed but wouldn't be closing until the Sunday after Convention ended. First, we had to determine our bid. At the time, the bowls were still in the \$350 range, but we knew they would go much higher. Lynn first suggested \$1000 as a target number. While that would be an ideal acquisition price, we needed to bid higher to have a cushion.

Cindy Arent had been having computer problems, so it was decided that I would do the bidding from our room at the Comfort Inn ... a risky proposition. With an eager crowd on hand around 10:30 that Wednesday night (Tarzan Deel, the Filippinis, Citrons, Streblers and Klemkos) we began the countdown. As I am prone to do, I did not want the bid placed until the very end of the auction.

With ten minutes left, a major bid was placed by some collector friends from Colorado. Uh-oh. How could we get word to them that we were going to bid on the Museum's behalf? Cindy Jones called information to get their phone number, while at the same time I realized I had them on our AOL "Buddy List." As I contacted them via computer, Cindy reached their house. It turned out they were in Knoxville, Tennessee and were bidding from the road. Cindy was able to coax a cell phone number out of their house-sitter and she reached our friends in Knoxville. They agreed to defer to the museum's acquisition effort.

Finally the time came; the auction was about to conclude. We were very

concerned about the hotels' slow Internet connection, so we decided to place the bid with about thirty seconds left (vs. my normal seven seconds). We had the bid at just over \$800 - not bad! But, who was still to be heard from? It was taking *forever* for the screen to refresh and the suspense was intense. Finally with mere seconds left, the bid amount jumped to \$1,276 but we were still high bidder. The auction was won. Yeah!

Fortunately, we had placed enough cushion on our bid to be victorious. The underbidder was another great collector from Colorado. We emailed him immediately so he knew that the purchase was on behalf of the museum.

Jim and Nancy Finley agreed to help on fund-raising. It was very good timing, having so many club supporters on site for the convention. We had a wonderful response from members and were able to raise over \$2100 toward not just the bowl purchase, but the hoped-for goblet buy on Sunday. Since then we have received a \$100 pledge from a Kansas collector and a \$200 gift from the Fostoria Collectors group in California.

Sunday was getaway day. Cindy and I made the nearly nine-hour drive home but we made it by 5:30 and the goblets were not closing until 10:32. This time

continued on page 9

*In Next Month's
Crystal Ball*

Hellmers' Colors: Amethyst

•••

Figural Flower Frogs

•••

The White Plains Show

Research & History:

Why is a Flip Vase called a Flip Vase?

Extracted from an article which appeared in the
National Imperial Glass Collectors' Glasszette

by Mary Lee Wilson

More than one collector has been know to ask, "How come they call it a flip vase?"

Common sense says that the term must surely be rooted in days long past. Sometimes one stumbles across an answer to a question like this quite by accident. When I recently received a gift catalog from the Metropolitan Museum of Art, I finally discovered an explanation of how the flip vase may have gotten its name. This is how the story goes, or at least it's how the Metropolitan Museum of Art chose to tell it.

A large glass was originally used in the preparation and consumption of a beverage called "flip," a well-spiced rum concoction popular during the very early days of trade with the West Indies. One particularly potent recipe for "flip" was known as a "Yard of Flannel." A traveller by stagecoach through the wintry woods of New England recorded a brief stop at an inn, where he and his companions "did warmly wrap ourselves in several Yards of Flannel."

In examining the recipes found for this drink, we see that it requires a glass of more than one quart in capacity, so a "flip" glass of old would more likely be used as a vase today.

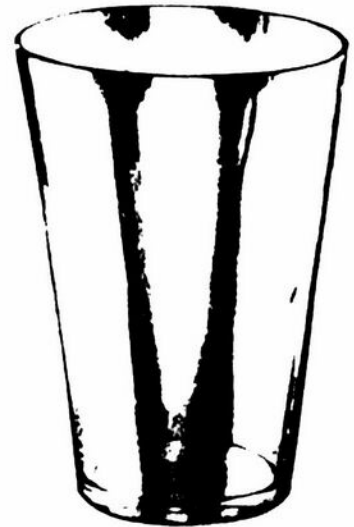
The Metropolitan Museum of Art's catalog goes on to state "Flips were originally hot drinks concocted in the winter by thrusting an iron flip dog or loggerhead into the glass or mug. This produced a pleasant sizzle and a burnt taste."

The old recipe does indeed use a quart of ale, a half a cup of rum, several whole eggs, sugar, nutmeg and ginger. It follows that the thing must have come in a very big glass. The next time you see flowers in a flip vase by Imperial or another manufacturer, try to imagine filling it with a "Yard of Flannel" flip. As to the flip dog or loggerhead... does anyone know what one looks like?

Editor's note:

My confession is that I always wondered why this type of vase was called a flip vase. There seemed to be nothing even remotely "flippy" about it. Looks like a big drinking glass; a super tumbler. Well, now I know the answer... or at least a plausible and entertaining theory. Our thanks to Ms. Wilson and the Imperial Club for sharing this article with us.

--Alex



Cambridge #797, 8" Flip Vase



*Cambridge #3143/26, 8" Flip Vase
with Gyro Optic*



*The reproduction of an 1830's Flip
Glass offered in the Metropolitan
Museum of Art's gift catalog.*

2003 Convention:



Above Left: Vicki & Frank Wollenhaupt have attended every NCC Convention!

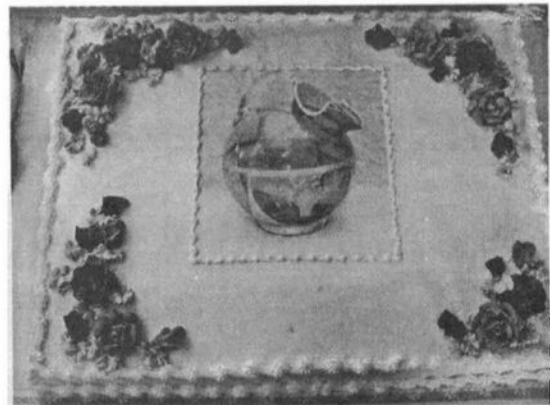
Above Right: The new Friday Night Fare.

Left: Bill Dufft presents a program on Farber Brothers.

Right: David Ray, Linda Roberts at the banquet.



*Photos on-line in full color at:
www.crystalballphotos.org
password: potato*



Above: One of three cakes decorated with images of Cambridge Glass, served at Friday Night Fare.



Left: Larry & Susan Everett prepare a display window. The theme is Rosepoint in the 30's, 40's and 50's.

Museum News & Notes:



Long-time members Bob and Marcia Ellis pay a visit to the Museum after the 2003 Convention.

City Approves Museum Signage

The office of the Mayor of Cambridge has given preliminary approval to the placement of a new sign directing visitors to The National Museum of Cambridge Glass.

The sign, which will be placed near The Bennett Glass Museum, will help clear up some of the obvious confusion that exists with two museums of Cambridge Glass in one town. It will direct tourists and visitors to The National Museum of Cambridge Glass, clearly indicating that it is a separate entity from the Bennett Museum.

The existing signage for the Bennett Museum will remain; the hope being that the reduced confusion will benefit both museums.

August Meeting Will Be Held at Museum

Our traditional August Quarterly Meeting and Lunch (August 23rd) has had to find new quarters this summer, as the back room at Theo's was previously booked by another group.

Before you despair, however, consider this: we will be dining (12:00 noon) at The Forum, a favorite among locals and visitors to Cambridge alike.

After lunch, we will adjourn to the National Museum of Cambridge Glass for our brief business meeting and a special presentation by Mark Nye. Mark will talk about the wealth of new research materials recently acquired by the NCC.

Reservations are not necessary for lunch or the meeting. See you at The Forum!

Visit your National Museum of Cambridge Glass
located at 136 South Ninth Street, Cambridge, OH
Open Wed - Sat 9 to 4; Sundays noon to 4



The National Museum of Cambridge Glass
136 S. Ninth Street Cambridge, OH

People:

Cambridge Workers Reunion



L to R, front: Dan Slay, Wilma Headley Watson, Elva Voltz, Dorothy Golden, Shirley Barnett, Jeannie Selock.

middle: Agnes Slay, Minnie Johns, Edna Stevens Nicholson, Clara Valentine, Jean Turner Cunningham, Raymond Cunningham, Fern Lengen, Alice Howell.

back: Evelyn Klass, Whitie Klass, Raymond Slifko, Bob Selock, Ed Lehotay, Anna Lengen, Betty Frontz, Don Frontz.

not pictured: Margaret Martinskin Sowinski, Mary Holiday, Sid Garrett.

For more on this year's Workers' Reunion, sponsored by The Cambridge Cordials, see the article by Lorraine Weinman on the back cover.

*Make plans today to come to the August Quarterly Meeting
See page 8 for details*



Shirley & Carl Beynon at Brighton's Ice Cream Parlor

Carl Beynon

continued from page 1

seeing carpentry, electrical work, painting and everything else."

Lately, Carl has become the champion of the roof project, working to identify our needs and find us the right contractors to replace the museum roof. No matter what the task, Carl has jumped in with both feet, and always with remarkable good cheer. It seems that no matter how hard we work him, this man just won't complain!

Carl retired from Applied Distribution Systems in 1986. He and his wife Shirley celebrated their 50th wedding anniversary on July 11th of this year.

Carl Beynon exemplifies the true spirit of a volunteer organization, and all members of NCC owe him a pat on the back for a job very well done.

Thanks, Carl!

Finleys Will Take Swans to Texas

Jim and Nancy Finley, who presented an educational program on Cambridge Swans at the 2003 NCC Convention, have arranged to repeat their performance at Kent Washburn's San Antonio Glass Show in February of 2004.

If you love Cambridge Swans, or just want to learn about them, mark your calendars now for February 14 & 15. The Finleys' program also includes an eye-popping display of over 100 Cambridge Swans from their collection!

Jim and Nancy, who live in Sedalia, MO, started collecting Cambridge glass in 1984. "We were looking for some nice stemware to use for serving wine at our dinner parties. At a small local antique show we saw some Rosepoint goblets. We thought they were pretty and they were the right price. The lady had a couple of bowls that matched and we bought them along with about 12 stems. In all innocence, we asked, is there more of this stuff? Now in 2003, our house is crammed with our many collections of Cambridge Glass. The swans are a favorite. We loved displaying them during the Convention. We look forward to sharing the collection and information with the people at the San Antonio show."

The Washburn San Antonio Show is held at the Live Oak Civic Center on February 14 and 15, 2004. For more information, you can contact Kent Washburn at (210) 599-0635 or on the Internet at washburnk@aol.com.

August 23, 2003 NCC Quarterly Meeting

12:00 noon at The Forum
2205 Southgate Parkway, Cambridge
Quarterly Meeting after lunch at the
National Museum of Cambridge Glass
*Special Report by Mark Nye
on new paper acquisitions.*

November 8, 2003 Quarterly Meeting & Educational Program

6:30 pm at the Holiday Inn, Cambridge

2004 Auction Lists Due in September

It's not too early to start planning for the NCC's 2004 Auction, scheduled for March 6, 2004. After all, the first step is the consignment of glass, and lists are due in September - just a month away.

Members wishing to consign glass to the auction should prepare a detailed list of glass and send it in no later than October 1, 2003.

Lists of consigned glass should be sent by mail to:

NCC Auction Lists
PO Box 416
Cambridge, OH 43725

Lists may also be sent via E-mail to:
Squeek@compuserve.com

If using E-mail, be sure your subject line indicates *NCC Auction*. **Glass should not be sent at this time.**

It will be most helpful to the Auction Committee if you give as much detail as possible about your consigned glass, including item numbers when available. Please bear in mind that the Auction is a major fundraiser for the NCC, so top-quality glass is

2003 Convention was "Enchanting"

by Lorraine Weinman

Glass collectors from across the United States gathered in Cambridge, Ohio, for the 30th annual Convention of National Cambridge Collectors, Inc. Hundreds in attendance enjoyed splendid weather and enthusiastically participated in a number of planned activities.

The centerpiece of the Convention was the 28th annual show and sale. There were 22 quality dealers. The room literally sparkled with elegant glass from the Cambridge Glass Co. and many other glass manufacturers. Collectors from 25 states found rare pieces, exciting discoveries, and those long sought-after items. Dealers and buyers alike rated the show a success. Show Chairs Mary Beth Hackett and Joy McFadden have done it again!

Things got started on Thursday with a program at the Pritchard Laughlin Civic Center about Cambridge Swans which was presented by Jim and Nancy Finley of Sedalia, Missouri. On Friday, NCC members started the day with coffee and doughnuts at the Museum, then registration opened at the Civic Center shortly before the First-Timers Orientation Session. Judy Rhoades led the session which introduces first-timers to Convention procedure and to mentors to help acquaint new people. This year's convention boasted 12 new attendees.

The Glass Show and Sale again saw anxious buyers and lookers camping out early in the day to

hold the highly regarded places at the front of the line. At the beginning of the line this year were: Steven and Helen Klemko (arriving at 6:15 a.m.), Rich Bennett, Mike and Lisa Neilson, Julie Buffenbarger, Gail and Paul Duchamp, Myrle Scott and Alex Citron.

Friday evening there was a Silent Auction providing friendly competition for some Cambridge Glass treasures. This light-hearted event,
continued on page 15

If you know about any upcoming glass shows or other glass events, please pass the word on to us at least six to eight weeks before the show dates. These listings are free of charge.

Upcoming Glass Shows

August 9-10:

The Great Northeast Show
Westchester County Center
White Plains, NY
Call (860) 872-3294

September 19-21:

Sanlando D.G. Show
*** NEW LOCATION ***
Volusia County Fairgrounds
Deland, FL
Call (407) 855-5502

September 20-21:

Washburn's San Antonio Show
Live Oak, TX
Call (719) 598-1424
Email: washburnk@aol.com

September 27-28:

Pikes Peak DG Show
Colorado Springs, CO
Call (210) 599-0635
Email: Les.Stewart@wcom.com

Study Groups:

The NCC has several study groups; these are the groups currently active and holding regular meetings. Listed below is contact information for these study groups.

If there is no study group in your area and you are interested in starting or joining a new study group, please contact the Crystal Ball or call NCC Study Group Advisor Ken Filippini at (201) 670-0990.

- #13 - Miami Valley Study Club**
Miami Valley area, Ohio
Larry Everett
db0098@dragonbbs.com
(937) 675-6491

- #14 - The Cambridge Cordials**
Cambridge, Ohio
Lorraine Weinman
blweinman@hotmail.com
(330) 966-9376

- #15 - North Texas Cambridge Study Group**
Dallas area, Texas
Scott Pierce
scottpierce1@msn.com
(817) 427-9510

- #16 - Elegant Glass Collectors**
PA & NJ
Bill Dufft
billnvon@aol.com

- #17 - The Columbus Wildflowers**
Columbus, Ohio
Barbara Wyrick
bwyr@ee.net
(614) 291-0361

- #18 - The Cambridge Triangles**
VA, MD, DC
Alex Citron
apcpenguin@aol.com
(434) 296-2531

- #19 - NE Ohio Cambridge Collectors**
Akron-Canton area, OH
Hilda Pfouts
pfoutshi@aol.com

- #20 - South Florida Study Group**
Ft. Lauderdale, FL
Linda Gilbert
rosepointbabe@aol.com

The Acquisition

continued from page 3

a similar scenario played out, minus the Colorado connection. NCC was able to acquire the tremendous goblet set for \$1,553. Once again, there was an underbidder who pushed us up by \$500 within seconds of the end. Fortunately, we had again gone high enough to prevail.

Since the acquisition, reaction has been overwhelmingly positive. We paid less for the two lots than one serious collector said he was willing to bid on the goblets alone. I'm sure there will be second guessers, there always are, but this was an outstanding buy.

Now came payment and pick up planning. These pieces came out of a Michigan City, Indiana auction of a local china store. Nobody wanted these pieces shipped, so the seller agreed to drive halfway to rendezvous with one of us. Cindy Arent's sister, Lindy Thaxton, lived in Ft. Wayne, Indiana and was willing to pick up the lots and then shuttle them to Cindy at the Columbus Airport where she had an upcoming flight. Further, Lindy was willing to front the money and then get reimbursed by the NCC. This was great, as we had just deposited the donations and our Treasurer wanted to keep the accounts and their designations very clear.

Lindy was put in contact with the sellers and a meeting was arranged for that Saturday at a gas station in Plymouth, IN. The transfer was made! The next day, the "package" moved on to the Columbus Airport. Lindy made the transfer to Cindy (and her husband Mike) and the Rose Point sets were off to their permanent home at the National Museum of Cambridge Glass.

There are so many people to thank in this story, the incredible odyssey of rare display items from a retail store to auction to online auction to Comfort Inn bidding to the meeting at Plymouth to the transfer at the airport to the journey home to Cambridge. First and foremost, our gratitude to Lindy Thaxton for volunteering to help in ways so above and beyond. And also to Lynn Welker and both Cindys (Arent

and Jones) for their terrific communication and sensible planning.

And finally to those who gave generously to help us afford this set: Mike & Lisa Strebler, Jeannie & Freeman Moore, Sharon & Joe Miller, Mike & Cindy Arent, Dean Gattone, Lindy Thaxton, Mark Nye, Linda Roberts, Alan & Gailyn Sadurski, Pat Stevens, Barbara Wyrick, David Ray, John Fecik, Ken & Judy Rhoads, Will & Bev Acord, David & Kathy Lake, Karen & Bob Gallagher, Marybelle Teters, Bernie & Luene Torner, Doug Ingraham, Jim & Nancy Finley, Vicki & Frank Wollenhaupt, Kent Washburn, Mr. & Mrs. Floyd Weger, Jim & Sandy Buffenbarger, Larry & Susan Everett, Diane Gary, Bob & Margaret Downing, Kathy Chester (in memory of Joseph Arent), Ken & Jane Filippini and Shelley Cole & Alex Citron. There was also another donation that we did not have a name for so our apologies and our thanks to you.

The club still could use a few more donations to help close the gap so if you would like to help out and be part of this lasting legacy, please send a donation to NCC, Inc. and designate it for the Rose Point display. That way we can make sure it is properly designated.

Be sure to see next month's issue, for this amazing story told in pictures!

Don't forget...

The Century Club

*Support the Endowment Fund
Help Replace the Museum Roof*

Join Today

2003 Convention:



Top: Sharon Miller of the Cambridge Cordials selling Fifty-Fifty Raffle tickets before Friday night's dinner. The raffle raised over \$350 for the NCC.

Middle: The PLCC Galleria has never looked better! Ready for the banquet.

Bottom: Convention co-Chairs Georgia Otten and Shelley Cole Citron welcome Board member Larry Everett and his wife, Susan.

Regional Activities:

The 2004 Auction

continued from page 8

preferred. All lists must include your mailing address and phone number. The Auction Committee will review the submitted lists and will let each consignor know what glass is to be shipped to Cambridge. Glass accepted by the Committee needs to be shipped by November 15th. The correct shipping address will be provided to each consignor. Glass will also be accepted in Cambridge during the November Quarterly Meeting.

20% of the winning bid on each item is retained by the club. In addition, members may choose to consign some pieces as "donations," in which case the entire price of that item will go to the NCC.

A "How-To" Guide for Book Tables

As a component of the effort to reach more collectors, nothing does more than an NCC book table at a local glass show. Successful tables have been running for some years at shows in New York, Texas, Pennsylvania, Florida and Virginia. In every case, these tables have not only sold books and NCC fundraisers (like the Scotties), but they have signed up new members for the NCC.

A number of NCC members who have worked at book tables have begun putting together an informal How-To guide for book tables. They hope it will make it easier for members around the country to start doing book tables at their local shows.

If you have any ideas, experiences or suggestions, send them to the Crystal Ball, and we'll pass them along.

Start Your Own Library Project

by Myrle Scott

You might ask, what is a library project? This project is a way to spread information about Cambridge glass, to educate people about the glass making history of our country through Cambridge glass and generally to show the beauty of the glass you collect.

You go about doing this by having displays in your area libraries along with literature and contact persons. Exhibits can be done around glass events i.e., a local glass show, auctions or around convention time. Glass displays may spark an interest in those who may have a collection or even a few pieces and would like to learn more about their items. It is also a good way to recruit new members to the NCC and your local study groups.

My depression glass club has been doing these exhibits for the past three

years and we have found that the libraries love to have our exhibits as well as having good feedback from our membership, increasing membership in our club and drawing people to our glass shows.

We recently presented this project to the joint Study Group meeting at the NCC Convention. Several groups expressed interest. We can help start you on your way to an exhibit of your own. We have packets prepared with material you might use and ideas about "themes" for your exhibits. Just get in touch and we'll send you one.

Let's all go spread the word!

You may contact:
Ken Filippini at 201-670-0990
lobstrboy1@aol.com

or...

Myrle Scott at 973-292-3028
mksteech@aol.com.

NCC at the NDGA Show in Oklahoma

reported by Freeman Moore

Claremore, Oklahoma was the host city for the 2003 National Depression Glass Association annual convention. Thirty-two dealers provided the backdrop for a wonderful time. Cambridge glass was found in abundance among the dealers. Several NCC members stopped by the table throughout the weekend. Thanks go to Shelley Cole Citron, Scott & Gwenell Pierce, and Freeman, Jeannie, and Kevin Moore for staffing our book table. The NCC table was voted "best candy in show." This might be because of the selection of chocolates served in an amber apple blossom bowl.

In addition to the dealers, there were 27 displays located around the Expo Center. Jeannie and Freeman Moore provided a stunning display of Cam-

bridge ball jugs. The display had an assortment of colors, etchings, cuttings and treatments. Several dealers remarked that this was the first time they had seen some of the ball jugs. It was difficult for Jeannie to select a subset of her ball jugs for this display.

The NCC table volunteers enjoyed answering questions and talking with people. We were able to do some glass identification, pointing out to people the value of the NCC reference material. Thanks to all the NCC members who stopped by and helped share the joy of Cambridge glass.

This year Claremore, Oklahoma; next year Council Bluffs, Iowa!

2003 Convention:



Left: Steve & Helen Klemko and Rich Bennett are first in line for the opening of the Glass Show.

Below: Members mingle before Friday's cocktail party and dinner.



Above: Cambridge Flower Frogs and convention favors made beautiful centerpieces on the banquet tables.

Right: winners of the first NCC Trivia Contest (L to R) - Alan & Gailyn Sidurski, Julie Buffenbarger [Grand Champion], Georgia Otten.



2003 Convention:



Top: The Friday night cocktail reception.



Left: Convention co-Chairs Georgia Otten and Shelley Cole Citron.

Bottom: Conventioneers admiring the Swans at the Finleys' program.

NCC Convention 2003
June 26 - 29
Cambridge, OH



Board of Directors Election Results

At the 2003 Annual Meeting, held during the NCC Convention, Nominating Committee Chairman Tarzan Deel, Jr. announced the results of the recent election of Directors.

Sharon Miller and Lynn Welker were re-elected to the Board. Larry Everett was elected to his first full term; he had been serving on the Board completing Bud Walker's term.

This year's election yielded the highest recorded number of votes cast in NCC history. Tarzan pointed out that the fifth-place finisher in this election received more votes than the first-place finisher two years ago. This speaks well for an increasing level of involvement among the membership.

The three Directors elected this year will serve on the Board for a four-year term, thru June of 2007.

National Imperial Glass Museum

3200 Belmont Street
Bellaire, OH 43906

Hours:

April 1-October 31
Wednesday-Saturday
10:00 AM-4:00 PM

Admission:

\$2.00 per person
Present your NIGCS Membership
Card to gain free admission.

For additional information
please contact the Museum
during hours of operation
740-671-3971
or email us anytime at:
museum@imperialglass.org

What Are You Doing in There?

by Georgia G. Otten

Inspiration for me seems in short supply. However, just when I think I could not come up with another topic, something or someone gives me an idea. I find I consider the diverse groupings a person might select for a collection of Cambridge glass. So if and when a theme hits, I get the Cambridge books and catalogs and try to find the glass to go with that theme. So.....

Have you ever thought about the fact that there seems to be one room in a home where a person's occupancy is questioned? It's true; there is only one room. IT IS THE BATHROOM! At some point in life, I am sure each one of us has heard these words: Hey, what are you doing in there? While there are many possible answers to that question, the Cambridge Glass Company would have been hoping to hear that their products made especially for that room were being used and/or admired by the current occupant of the room!

Cambridge produced many different colognes, perfume bottles and puff boxes. Any of those might easily be found in a bathroom. But there are some other basic and very functional items not so well known as the perfumes. Beginning in the early 1900's under the "Nearcut" trademark, Cambridge produced the 2800 Community line and one could find wonderful necessities/accessories for the bath. From the large ewer and basin to the pin tray, covered soap, and brush holder, it was all there. But what color to choose? Primrose, Carrara Azurite? You say Mulberry? Well, homemakers had choices and decisions to make!

Staying with the basics, there was an item just for the men. It is the No. 826 Sani-Shaving kit which was designed to hold a razor, blades, styptic pencil, cream and brush! The cover for this set has a hole in the knob for ventilating purposes. An

example can be found in the 27-29 Catalog Reprint as well as in the Colors book. Finding it elsewhere is more difficult! And I have to make a personal confession here.....when I bought one these many years ago I thought I had bought part of the desk set!

Cambridge also produced a line of storage containers: the bathroom bottles. I have seen these in Peachblo, Emerald (early light), Ebony, Crystal, and Crystal with Ebony stoppers. So there was no doubt of the intended use, some of the bottles will be found etched with one the following: Cotton, Bicarb Soda, Witch Hazel, Mouthwash, Listerine, Epsom Salts, Toilet Water, Boric Acid, Alcohol, Hand Lotion, or Bath Salts. I have also seen an Ebony set with gold lettering and decoration! What a great display to have any of these bottles lined up on the No. 1197 15" X 3 1/2" tray or the No. 1198 6" square tray! If a primary or brighter color would better suit your décor, consider the bottles from the Mt. Vernon line in Carmen, Royal Blue or Forest Green. Another fascinating item for the bath, rather than an aerosol freshener, would be a wonderful perfume lamp, essence of your choice, and with the globe by Cambridge of course!

Not counting various shapes found in the Special Article perfumes or the numerous colors, I found over fifty items which could be used at the vanity in the bathroom. Now that would be quite a grouping! It would take a long time to look at all that and appreciate it. Perhaps that is just what you could be doing in there!



Banquet Stems

reported by Jeannie Moore

What can you see across a crowded room? Well, if you were at the 2003 NCC Annual Banquet, you saw people toasting one another using Cambridge glass. Cuttings, etchings, and colors could all be found in the hands of various people. The variety of stems (and coffee cups!) that people brought added to the elegance of the evening. Here's the list that I compiled:

1066 etched Apple Blossom
3139 with #992 Regent cutting
3139 with #985 Maryland cutting
3750 with Euclid cutting
3116 with cut Candlelight
3011 (nude stem) Table Goblet,
etched Apple Blossom
Stradivari with Celestial Cutting
3106 etched Rosepoint
3121 etched Wildflower
3779 etched Chantilly
3130 Willow Blue etched #E740
Stradivari etched Diane
3115 etched Rosalie
3130 Gold Krystal etched Apple
Blossom
3121 with Achilles cutting
3077 Peach-Blo narrow optic
3122 Carmen
3122 Royal Blue
933 cup & saucer Peach-Blo etched
#E740
300 Moonlight blue caprice wine
Pristine goblet with Gold rim D/450
3105 Royal blue pressed Rosepoint
3105 Carmen pressed Rosepoint
3122 with unknown cutting
2260 Wheatsheaf Nearcut goblet
3114 etched Candlelight
3105 with Jasmine cutting
7390 etched #E405
3060 etched #E704 with gold band



Convention first-timers: Front - Doug Warren, Myrle Scott, Kathy Litten, Ralph Litten, Susan Warner. Back - Dean Gattone, Linda Warren, Joanne Beekhuizen, Ernie Launer, Shirley Launer.

Enchanting 2003 Convention

continued from page 8

event, sponsored this year by the Columbus Wildflowers study group, raised over \$2,000 to benefit the National Museum of Cambridge Glass. The top price paid was for a copy of the *Helmets Colors Book*, donated last year by the author, Dr. Bill Courter of the Aladdin Knights. Dr. Courter, who published the book, had donated one copy to our museum and another to sell as a fund-raiser. The book brought over \$400.

At the Annual NCC Meeting, Frank & Vicki Wollenhaupt, Joy McFadden, and Marcia & Bob Ellis were recognized for their attendance at all 30 NCC Conventions. Board election results were announced: Sharon Miller and Lynn Welker were reelected and Larry Everett was newly elected. A record number of votes were received with all candidates receiving strong support.

Early Saturday morning, dedicated collectors found their way to The Glass Dash at Beech Grove Family Development Center. By the 7:00 a.m. opening, there were 160 "early-bird" buyers lined up at the door. Glass Dash Chairs Larry and Susan Everett had a very successful event.

Saturday night saw the annual banquet with the theme of "Some Enchanted Evening." Convention co-Chairs Shelley Cole Citron and Georgia Otten opened this event. Both were dressed elegantly, as were

many others, in keeping with the Convention's theme. Following the banquet, Michael Palmer, one of the authors of the new *Charleton* book, presented a program about the Charleton decoration on Cambridge and other glass. Hundreds of examples of the glass awed everyone in attendance.

On Sunday, the annual Cambridge Glass Company workers' reunion saw over 20 former workers in attendance. This chance to visit and reminisce was added to by the opportunity for the former workers to visit the museum and see many of the pieces of glass that they once helped make. The gathering was sponsored by The Cambridge Cordials Study Group.

As the convention came to a close late Sunday afternoon, those in attendance shared the feeling that this was a very upbeat convention. The variety and quality of the glass was amazing. Acquisitions of outstanding pieces of glass headed home to be displayed and appreciated for years to come. And again, new and old friends have taken home numerous shared stories and memories of this year's convention and Cambridge. Thanks to everyone for making this a memorable convention. And thanks to the many who put so much time and effort into supporting NCC and making it a special organization of which we all can be proud.

The Marketplace:

VIDEOS

"The Crystal Lady" \$15.00

A video copy of an original Cambridge Glass Co. promotional film showing the making of a goblet in the Cambridge factory. 25 minutes, B&W.

NEW: Grand Opening Video \$15.00

A high-quality video record of the Grand Opening of The National Museum of Cambridge Glass. 25 minutes, Color.

SALT & PEPPER TOPS

Salt & Pepper Tops \$6.00 per pair
Polycarbon plastic, will fit most Cambridge shakers such as Rosepoint footed and flat-bottom shakers. Also fit Heisey Rose, Saturn, Plantation, Crystolite and some Orchid. Will fit some Anchor Hocking and Candlewick.

Order 10 or more pairs, pay only \$5 per pair

Books by Gene Florence

Very Rare Glassware (3rd Series)	\$24.95
Very Rare Glassware (5th Series)	\$24.95
Very Rare Glassware (6th Series)	\$24.95
Elegant Glassware (8th edition)	\$19.95
Glassware of the 40s-50s-60s (4th edition)	\$19.95
Glassware of the 40s-50s-60s (5th edition)	\$19.95
Stemware (Cordials) 1920s-1960s	\$24.95

CONVENTION FAVORS

1995 Cranberry Ice Cascade Goblet	\$5.00
1998 Yellow Irridized Cascade Goblet	\$5.00
2000 Carnival Mt. Vernon Juice	\$5.00
2001 Carnival Mt. Vernon Juice	\$5.00
2003 Bluebell Square Sugar/Cigarette	\$5.00

CONVENTION BOOKLETS

Convention Booklets \$5.00/year
• All NCC Conventions 1994 - 2003 •

NCC Tote Bags \$10.00

Ordering Information

NCC Members get a 10% discount on all the books within the dotted lines on page 17. There are no discounts on any other items.

SHIPPING & HANDLING RATES:

First item	\$3.00
Each additional item	\$1.00

SPECIAL SHIPPING:

- Scottie Dogs: \$10/pair for shipping
- Salt/Pepper Tops: \$3 shipping for any size order
- Jadite Tumblers: \$3 each, \$10 for a set of six
- Logo Pins: shipping included in price

**OHIO RESIDENTS:
PLEASE ADD 7.5% SALES TAX**

Payments by check or money order only.

Send orders to:
NATIONAL CAMBRIDGE COLLECTORS, INC.
PO BOX 416
CAMBRIDGE, OH 43725

*Be sure to include your complete shipping address and phone number.
Thanks!*

SCOTTY DOGS

Red Scotty Dog Bookends are still available! \$100.00/pair
2000 fund raiser for NCC Museum; made in original Cambridge molds by Mosser. Marked NCC 2000.

NEW NCC LOGO PINS

Show your pride in being a Cambridge collector and a member of NCC.

Only \$5.00 includes shipping



Crystal Ball

Table of Contents for **The Crystal Ball**

Issues #69 - #320
(Jan 1979 - Dec 1999)

Only \$2.00

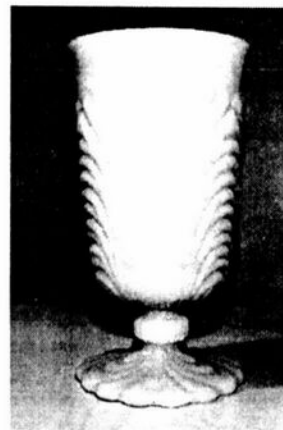
Back Issues of **The Crystal Ball**

Sold by the year:

1999 • 2000 • 2001 • 2002

\$5.00 per year

Jadite Tumblers



\$20 each; set of 6 for \$100

plus shipping charges of \$3 each or \$10 for the set of 6

Made for the NCC by Mosser Glass
Marked on the bottom: NCC 2002

The Marketplace:

Books for Sale

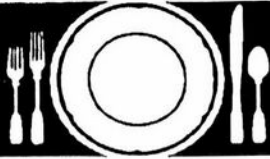
FOR ORDERING INFORMATION, SEE FACING PAGE

NCC Members receive a 10% discount on the following books:

1910 Near Cut	108-page reprint of the 1910 Catalog Paperback with price guide	\$14.95
1930-34 Catalog	250-page reprint of 1930 thru 1934 Catalogs Paperback with price guide	\$14.95
1930-34 Index	for above	\$2.00
1949-53 Catalog	300-page reprint of 1949 thru 1953 Catalogs Paperback with price guide	\$14.95
1956-58 Catalog	160-page reprint of 1956 thru 1958 Catalogs Paperback (no price guide)	\$12.95
Caprice	200 pages; lists colors, decorations, reproductions, etc. Paperback with price guide	\$19.95
Colors in Cambridge Glass	128 pages including 60 color plates; fully indexed Hard-cover with price guide	\$19.95
Decorates	136-page Paperback (no price guide)	\$14.95
Etchings, Volume 1	by Miami Valley Study Group; 84 pages Paperback (no price guide)	\$14.95
Etchings, Non-Catalogued	70-page Paperback (no price guide)	\$12.95
Etching: Blossom Time	26-page Paperback (no price guide)	\$7.95
Etching: Candlelight	30-page Paperback (no price guide)	\$7.95
Etching: Chantilly	44-page Paperback (no price guide)	\$7.95
Etching: Diane	53-page Paperback (no price guide)	\$7.95
Etching: Elaine	64-page Paperback (no price guide)	\$9.95
Etching: Portia	57-page Paperback (no price guide)	\$7.95
Etching: Wildflower	42-page Paperback (no price guide)	\$7.95
Rock Crystal Engravings	94-page Paperback (no price guide)	\$14.95
Rosepoint	by Mark Nye; a comprehensive guide to Rosepoint Showing all blanks plus history of the line. 94 pages; Paperback with price guide	\$14.95
Rosepoint Price Guide	Values as of 2000 (<i>This is included with the Rosepoint Book listed above. Price is for the price guide when purchased separately</i>)	\$5.00

The following books do not offer any discounts:

Charleton Decorations	by Michael & Lori Palmer; a comprehensive guide to Charleton; full-color. Hard-cover (no price guide)	\$29.95
1903 Catalog	106-page reprint by Harold & Judy Bennett Paperback (no price guide)	\$5.00
1927-29 Catalog	66-page reprint by Bill & Phyllis Smith Paperback with price guide	\$9.95
1940 Catalog	250-page reprint of the largest Cambridge Catalog (<i>loose 3-hole punched pages</i>) No price guide	\$25.00
1940 Catalog Binder	for above; with Cambridge logo on front	\$5.00
Reflections	by the Degenhart Paperweight & Glass Museum A history of Guernsey County glass production. 45-page Paperback	\$5.00
Stemware	by Mark Nye; shows all Cambridge stemware lines 167 page Paperback (no price guide)	\$19.95
Universal Dinnerware	by Timothy J. Smith. Includes Cambridge Art Pottery, Guernsey earthenware, Oxford Pottery and more. 176 pages, color, Paperback	\$29.95
Welker - Volume I	by Lynn & Mary Welker; reprints from several Cambridge Catalogs. 120 pages, Paperback (no price guide)	\$10.00
Welker - Volume II	by Lynn & Mary Welker; 15 color plates showing choice Pieces from their vast collection	\$5.95



Stems Without Thorns

As the world's largest supplier of old & new china, crystal, silver and collectibles, Replacements, Ltd. has more than 700 different patterns of Cambridge crystal.

And however much we enjoy selling pieces that were once thought irreplaceable, we love buying them as well. Thanks to people like you, our crystal inventory currently numbers in the hundreds of thousands, and the numbers keep growing every year.

So, if you've been unsuccessfully searching for that elusive piece of Cambridge — or any other type of fine crystal — call us for a free list of pieces available in your pattern. And, if you're looking to sell pieces you currently have, we can help you there, too.

REPLACEMENTS, LTD.

China, Crystal & Silver • Old & New

1-800-REPLACE
(1-800-737-5223)

1089 Knox Road,
PO Box 26029, Dept. CB,
Greensboro, NC 27420
www.replacements.com



THE CAT'S MEOW NCC MUSEUM COLLECTIBLES

for sale by the Elegant Glass Collectors
Study Group

\$20 each... plus \$5 shipping

Please contact Bill Dufft at (610) 777-3869
or billnvon@aol.com



DEALER DIRECTORY

THE GLASS URN

456 West Main Street, suite G
Mesa, AZ 85201 480-833-2702
480-838-5936

Mail Order Shows Open Shop

CAMBRIDGE, FOSTORIA, HEISEY, etc.

THE DEGENHART PAPERWEIGHT AND GLASS MUSEUM, INC.

P.O. Box 186
Cambridge, OH 43725-0186

Intersection of US 22 & I-77
Phone 740-432-2626

GREEN ACRES FARM

2678 Hazelton Etna Rd.
Pataskala, OH 43062
(State Route 310 North)

Sat & Sun 1-7 pm 740-927-1882
Antiques, Crystal Glass & Collectibles

ALADDIN LAMP BOOKS

Free History of Aladdin Lamps
Figurine Lamps Wanted
Bill & Treva Courter

3935 Kelley Rd. Kevill, KY 42053
Phone 270-488-2116 FAX 270-488-2055

Madison Avenue Antiques

1851 Madison Avenue
Council Bluffs, IA 51503
Phone: (712) 388-2192



Just east of I-80 at exit 5
Antiques & Collectibles - 100+ Dealers
Open Daily 10 am - 8 pm

WASHBURN'S SAN ANTONIO SHOW AMERICAN GLASS, CHINA AND POTTERY

September 20, 2003 9:00 - 5:00

September 21, 2003 10:00 - 4:00

Admission: Saturday \$6.00 (good both days) • Sunday \$5.00
[\$1 off with this card]

Live Oak Civic Center • 8101 Pat Booker Road
Live Oak (San Antonio), Texas 78233

Guest Author: William P. Walker
"Paden City Glass Company, 1916-1951"

by William P. Walker, Melissa Bratkovitch & Joan C. Walker

Cambridge Dealers: Cecil Taylor, Robert Van Arman & Dean Warren

UPCOMING SHOWS: FEB 14 & 15, 2004 AND SEP 18 & 19, 2004

For Information:
Kent Washburn
(210) 599-0635
washburnk@aol.com

5492 Walzem Road #292
San Antonio, TX 78218-2125

DEALER DIRECTORY

When writing to these dealers, please enclose SASE

DAUGHERTY'S ANTIQUES
Jerry and Shirley
Antiques and Collectibles • Mostly Glass

www.daughertys-antiques.com
e-mail: sdaugh2515@daughertys-antiques.com

Shows & Mail Orders 2515 Cheshire North
(402) 423-7426 evenings Lincoln NE 68512

Milbra's Crystal Buy & Sell
Replacement and Matching Specializing in
Cambridge,
Milbra Long (817) 645 6066 Fostoria, Heisy
Emily Seate (817) 294 9837 and others.
PO Box 784
Cleburne TX 76033
E-mail: longseat@sbcglobal.net
www.fostoriacrystal.com

BARNESVILLE ANTIQUE MALL
open 7 days, 8 - 5
Roger, Nancy and Brian Mayhugh
Owners

202 N. Chestnut St. 740-425-2435
Barnesville, Ohio 43713 3 floors
EXIT 202 OFF I-70 • always buying & selling antiques

THE TEAM
ESTATE SALES
Liquidations • Appraisals
Consignments • Senior Services
Estate sales with some style and a bit of flair
ED TUTEN 7007 McVay Place
901-758-2659 Memphis, TN 38119
www.teamestatesale.com

THE GLASS CUPBOARD
P.O. Box 652
West End, North Carolina 27376

Marcia Ellis Cambridge Show
910-673-2884 and Mail Order

FINDER'S ANTIQUE HOUSE
3769 Highway 29 North
Danville, VA 24540
(434) 836-6782
Cambridge • Heisey • Duncan • Fostoria
Open Wed - Sat 11:00 to 5:00 (seasonal hours apply)
Monday thru Saturday 10 - 5:30 Sunday 12 - 5:50

Bogart's Antiques
BUY - SELL - APPRAISE - REFINISH
CANE & REED CHAIRS - CLOCK REPAIR

Jack & Sharon Bogart State Route 40
740-872-3514 shop 7527 East Pike
740-826-7439 home Norwich, OH 43767

BAKER FAMILY MUSEUM
805 CUMBERLAND ST.
CALDWELL, OHIO 43724
740- 732-6410
Mon & Thurs 9-4; Fri - Sat 9-5
Call for Sunday Hours

CRYSTALLINE COLORS
Buy, Sell and Appreciate
Cambridge and other Elegant Glass

I Love Cambridge
Lynne R. Franks 216-661-7382
Ohio Antique Malls

CRYSTAL LADY
Thurs. - Sat. 11-5
1817 Vinton St. Omaha, NE 68108
Bill, Joann and Marcie Hagerty
Shop 402-341-0643 Home 402-391-6730
Specializing in Elegant Glass & Collectibles
www.crystalladyantiques.com

Storck's Antiques
Rick & Joyce
Antiques & Collectibles • Glass & Pottery
Specializing in Fenton, Imperial & Cambridge
Shows & Mail Orders • Storck1@aol.com
Greenfield, MN 55373 • (763) 477-6415

Mother Drucker's
Fanny Drucker
Specializing in Elegant Glassware
Shows and Mail Order
P.O. Box 50261 Phone: 949-551-5529
Irvine, CA 92619 888-MDRUCKER
Website: http://motherdruckers.com

Deborah Maggard, Antiques
Specializing in Cambridge Glass,
American Hand-Made Glass & Victorian Art Glass

Please stop and see our extensive collection of
Cambridge Glass at Riverfront Antique Mall in
New Philadelphia, Ohio (I-77, exit 81)
Booths 805 and 812
You won't be disappointed.

We buy one piece or entire collections.
Please contact me at 440-247-5632
and leave a message, or e-mail at
debmaggard@adelphia.net

P.O. Box 211
Chagrin Falls, OH 44022


JUDY'S ANTIQUES
Judy Bennett
422 S. Ninth Street (corner of Jefferson)
Cambridge, Ohio 43725
Business (740) 432-5855
Residence (740) 432-3045
CAMBRIDGE GLASS MY SPECIALTY

YOUR AD COULD BE HERE
ADVERTISE YOUR SHOP OR SERVICE
JUST \$24 A YEAR
SEE INSIDE FRONT COVER FOR DETAILS

THE JONES GROUP
Cindy Jones
Buy and Sell Cambridge Glass

650 Riverside Drive
Sleepy Hollow, NY 10591
914-631-1656 or E-mail Caprice0@aol.com

Mary Jane's Antiques
Early American Pattern Glass
Depression Era Items



2653 Burgener Drive 217-422-5453
Decatur, IL 62521 mjhumes@aol.com

THE GLASS HOUSE ANTIQUE MALL
Furniture, Pottery, Glass
Antiques and Collectibles
I-70 Exit 146, East on SR 40

8825 E. Pike
Norwich OH 43767 TEL 740-872-3799

GATEWAY ANTIQUE MALL, INC.
JUST NW OF MINNEAPOLIS-ST. PAUL, MN
Next to Super 8 in Rogers, MN
(I-94/101 intersection)

85 Dealers • 7 days; 10 - 6 • 612-428-8286
ELAINE STORCK, OWNER/DIRECTOR

ISAACS ANTIQUES
(740) 826-4015

See our booths in Penny Court Mall in
Cambridge and at White Pillars Antique Mall
(Route 40, one mile west of
I-70 Norwich, OH • Exit #164)

PENNY COURT MALL
637 Wheeling Avenue
Cambridge, Ohio
100 Booths 15,000 sq ft

HOURS: Daily 10-6 Sunday Noon-5
Closed: Easter, Thanksgiving, Christmas
Call for other holiday hours 740-432-4369

MARGARET LANE ANTIQUES
2 E. Main St. New Concord, OH 43762
Lynn Welker (740) 826-7414

Cambridge Glass Matching Service
Hours: Mon-Fri 10-12 AM, 1-5 PM
or by appointment

DEXTER CITY ANTIQUE MALL
P.O. Box 70 Dexter City, Ohio 45727
(740) 783-5921
Located on Ohio Route 821
between exits 16 & 25 of I-77
Just 30 minutes south of Cambridge, OH

25 Former Cambridge Workers Gather at Museum

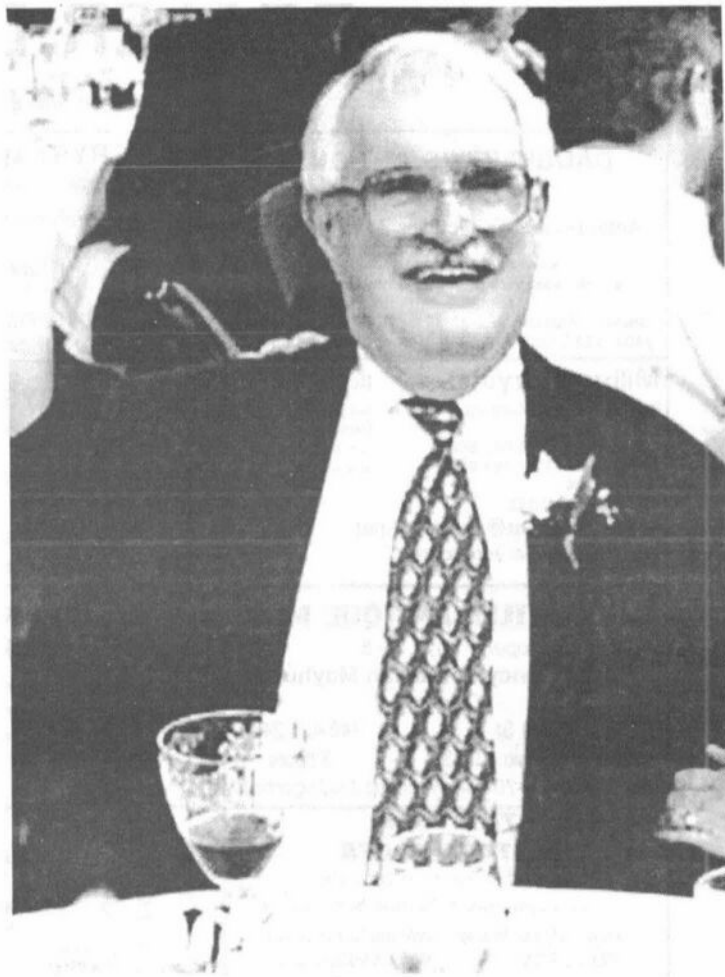
by Lorraine Weinman

This year's Former Workers Reunion found the Museum buzzing with activity. Twenty-five former workers from the Cambridge Glass Co. joined together for the annual reunion at The National Museum of Cambridge Glass. If you have never attended one of these events, it is a fun experience. Listening to the workers talk about their past work and memories can be eye opening.

Last year, Clara Valentine identified her brother-in-law's picture which is prominently displayed on the wall in the history of glassmaking display. This year several workers helped identify people in photographs hanging around the Museum and gave more information and explanation to the glass making process and pictured activities. Several former workers watched the *Crystal Lady* video and discussed it. New details! After viewing the new Sample Room display, Alice Howell graciously lent some items to be included so that all may see the variety of work made by Cambridge Glass. These glass "experts" enjoyed sharing their experiences and knowledge with young people who are now showing an interest in Cambridge glass. What a great way to learn about the glass!

As sponsors of this event, the Cambridge Cordials study group had set up a beautiful refreshment area in the back room of the Museum. The workers were invited to continue their visiting over punch, cookies, and fresh fruit. And before they left, some of Jill Ross's gourmet cookies were wrapped up and sent home with the guests to help sweeten their memories of the day.

More on this event in next month's issue!



Mark Nye was awarded Lifetime Member status by the Board of Directors at the 2003 Convention. Mark is a past-President of NCC, chaired the Convention for many years, heads the Publications Committee and currently serves as the NCC's first Archivist. Mark has been a frequent contributor to The Crystal Ball; we congratulate him on this well-deserved recognition.

NATIONAL CAMBRIDGE COLLECTORS, INC.
P.O. BOX 416
CAMBRIDGE OH 43725-0416

Website: www.cambridgeglass.org
E-mail: NCCcrystalball@aol.com

FIRST CLASS MAIL
US POSTAGE
PAID
PERMIT No. 3
CUMBERLAND OH 43732

FIRST CLASS MAIL

*Membership Renewal Notice:
If the date above your name
is 08-03, this is your last issue,
and your NCC Membership has
expired.
Please renew today.*