

Cambridge   
Crystal Ball

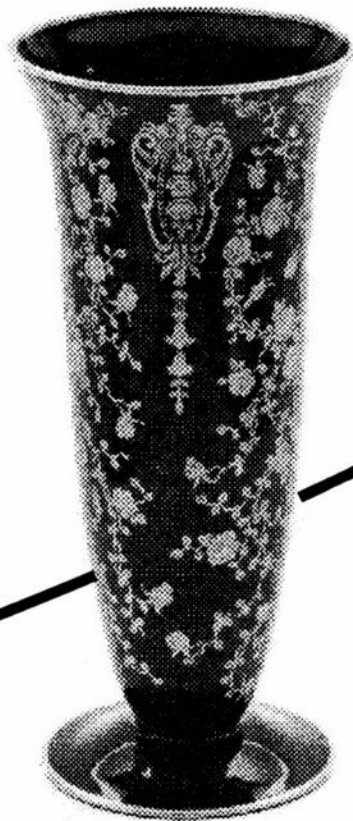
Published monthly by National Cambridge Collectors, Inc.  
to encourage and report the discovery of the elegant and boundless product of the  
Cambridge Glass Company of Cambridge, Ohio

Issue No. 378

December 2004

See Crystal Ball photos on-line, in full color at [www.crystalballphotos.org](http://www.crystalballphotos.org) (password on page 5)

ho ho ho



*Look what I just might leave under your tree!*

# National Cambridge Collectors, Inc.

PO Box 416 Cambridge, OH 43725-0416

## Membership

Master Membership \$20.00 per year  
Associate Membership \$3.00 per year  
> for another person, age 12 or over, residing in  
the same household

All members (Master and Associate) have full rights and benefits,  
including voting; Associate Members do not receive the newsletter.

## Address Changes

Please send address changes to:

Membership - NCC  
PO Box 416  
Cambridge, OH 43725

or by e-mail to:

lin26@hocking.net

## Board of Directors

Cindy Arent	Shelley Cole	Larry Everett
Ken Filippini	Rick Jones	Sharon Miller
Mark Nye	Dennis Snyder	Mike Strebler
Lorraine Weinman	Lynn Welker	Frank Wollenhaupt

## Websites

- **NCC WEBSITE**  
[www.CambridgeGlass.org](http://www.CambridgeGlass.org)
- **NCC WEBSITE - MEMBERS ONLY SECTION**  
[www.CambridgeGlass.org/NCCmembers](http://www.CambridgeGlass.org/NCCmembers)  
(User Name: NCC • Password: TriangleC)
- **CRYSTAL BALL WEBSITE (photos in color)**  
[www.CrystalBallPhotos.org](http://www.CrystalBallPhotos.org)  
(Password on page 5 of each month's newsletter)
- **MIAMI VALLEY STUDY GROUP WEBSITE**  
[www.mvsg.org](http://www.mvsg.org)
- **WILDFLOWERS' FLOWER FROG WEBSITE**  
[http://glasstresurechest.com/ncc\\_flower\\_frogs/wildflowerfrogsHome1.htm](http://glasstresurechest.com/ncc_flower_frogs/wildflowerfrogsHome1.htm)

## National Museum of Cambridge Glass

Located at 136 S. 9th Street in downtown Cambridge, OH

Open from April thru October (closed Easter & July 4th)

Hours: Wednesday thru Saturday 9:00 to 4:00  
Sunday Noon to 4:00

Admission: \$3.00 General Admission  
\$2.00 for students, seniors and tour groups  
\$2.00 for members of AAA  
NCC Members FREE

## Contacts

NCC Museum [open April thru October only]  
(phone) ..... (740) 432-4245  
(fax) ..... (740) 439-9223

Ken Filippini, President ..... (201) 670-0990  
e-mail: lobstrboy1@aol.com  
Larry Everett, Secretary ..... (937) 675-6491  
e-mail: db0098@dragonbbs.com  
Alex Citron, Crystal Ball Editor ..... (434) 296-2531  
e-mail: apcpenguin@aol.com

## Officers & Committee Chairs

President	Ken Filippini
Vice-President	Sharon Miller
Secretary	Larry Everett
Treasurer	Dennis Snyder
Sergeant-at-Arms	Rick Jones

Acquisitions Committee	Lynn Welker, Chairman
Archives Committee	Mark A. Nye, Archivist
Budget & Finance Committee	Mike Strebler, Chairman
By-Laws Committee	Alex Citron, Chairman
Crystal Ball	Alex Citron, Executive Editor
Endowment Committee	Rick Jones, Chairman
Facilities Committee	Carl Beynon, Chairman Joe Miller

Grants & Fundraising Committee	Sharon Miller, Chairman
Long-Range Planning Committee	Doug Ingraham, Chairman
Member Services	George Stamper, Coordinator
Membership Committee	Linda Adkins, Chairwoman Freeman Moore, Development Chairman
Museum Committee	Cindy Arent, Chairwoman
Nominating Committee	Tarzan Deel, Jr., Chairman
Program Committee	David Ray, Chairman
Projects Committee	Bill Hagerty, Chairman
Publications Committee	Mark A. Nye, Chairman
Publicity Committee	Lorraine Weinman, Chairwoman
Study Groups	Judy Rhoads, Advisor
Technology	Dennis Snyder, Chairman Linda Roberts, Webmaster

Auction Committee	Dorothy Rieker Squeek Rieker Lynn Welker
-------------------	------------------------------------------------

Convention Committee	Shelley Cole, Chairwoman
Glass Show & Sale	Mary Beth Hackett, Co-chairwoman Joy McFadden, Co-chairwoman
Glass Dash	Larry Everett, Co-chairman Susan Everett, Co-chairwoman





## *Presidents' Message:*

# Happy Holidays

As the last autumn leaves twirl in a colorful dance, and the cold winds blow through the yards, we in the northeast recognize these signs as harbingers of the upcoming holiday season. Once again the pages of the calendar have been torn away, revealing that another year has rapidly flown by. Now I am sure that there are different signals in other parts of the country which announce the coming of the holiday season, as well as the new year to follow. In the end, no matter where you live, it comes down to the same thing. Time to celebrate, reflect and renew. A time to give and receive. A time to appreciate where we have come from, where we are now, and where we hope to go; and most of all a time to be thankful.

I would like to thank three individuals who have done a great deal for NCC. They are Charles Upton, Tarzan Deel and George Stamper. These three began the year as NCC Board members, who each in his own way worked tirelessly for the NCC membership. Although they have all retired from the Board of Directors, they each continue to offer their assistance, and remain dedicated to the NCC family. As I reflect on the past few years, I am proud to have worked with these three and know NCC is richer for having had them on it's Board.

I want to take the opportunity to once again thank Rick Jones for his many years of service as President of NCC. Rick led the club through some of its toughest times as well as some of its most glorious moments. When Rick let it be known that his tenure as President was over, we as a group held our collective

breaths. Fortunately, one of Rick's greatest accomplishments was that he left the club in such great shape, and heading in the right direction. However, as we look forward, I can't help but think that some of Rick's greatest accomplishment for NCC are still on the horizon. Rick is currently bringing fresh ideas to the Endowment Fund. Along with Frank Wollenhaupt, Rick is in the process of creating a new Colors book, and he chairs a newly created development committee.

Next I would like to thank the Museum Committee; Cindy Arent, Sharon Miller, Carl Beynon, Lynn Welker as well as the many volunteers who gave their time to create this lasting legacy to the Cambridge Glass Company. Without their effort, we would certainly not have this magnificent structure to call the home of NCC. And I also have to thank you, the members. Without your generosity, we would not have been able to fulfill the vision that is now the NCC Museum. Just a couple of years ago we needed so much to make a dream come true and you, the membership, are responsible for making it happen. Now because of your continued generosity, I would like to inform you that the Museum mortgage is currently under \$50,000. Upon reflection, this is really an incredible feat in such a short amount of time. THANK YOU ALL. I can't help but fantasize on how great it would be, if next year at this time we could be toasting the completion of this obligation.

As we look forward to the coming year, the electronic Crystal Ball is about to be unveiled. This was no small undertaking and we owe a large

debt of gratitude to Alex Citron for sticking with it. For those who have seen advanced copies, as I have, it is obvious the quality of this new product will be vastly superior to what we have now. Thanks Alex for keeping NCC in touch with today's technology. I recommend you get your email address into Alex or Linda Adkins so that you can share in this colorful change. For those of you who do not have email, remember the printed copy will still be made available to you.

Looking forward a little further, into next year I have it on good authority, that Squeek & Dorothy Rieker and Lynn Welker have put together what might be one of NCC's greatest auctions ever. I know March seems far away but it is not too soon to start making your plans to be there.

The thing I am most thankful for is that somewhere along the way, I was handed a membership form for the NCC. The day I mailed it in began a journey that has led to my sitting here writing this President's message. I can't tell you exactly how many years ago that was, but I can tell you they have been some of the most enjoyable, exciting times I can remember. I have made it my obligation to continue to introduce others to this opportunity. If you look at your own journeys I am sure you must agree. Please take the time to pass this opportunity on to others.

Lastly, in one broad stroke, let me thank everyone else who has done so much in this past year and wish all of NCC a HAPPY HOLIDAY.

*Ken*

# Cambridge Crystal Ball

The official publication of National Cambridge Collectors, Inc., a non-profit corporation with tax-exempt status. Published monthly (except July) for the benefit of its members. All rights reserved; reproduction in whole or part without written permission of National Cambridge Collectors, Inc., and the author is prohibited.

**Executive Editor**  
**Research Editor**  
**Advertising Manager**  
**Circulation**

**Alex P. Citron**  
**Les Hansen**  
**Jeannie Moore**  
**Sharon & Joe Miller**

## Editorial Policy

The Crystal Ball is primarily dedicated to publishing materials of particular interest to the members of the NCC and collectors of Cambridge Glass in general. Research materials submitted are subject to review by the Research Editor or other experts. Materials submitted by Board members or committees, which relate to NCC activities, should be submitted in writing. All submissions are subject to editing for length, accuracy and conformity to norms of style, spelling, punctuation and grammar. No advertising will be accepted on behalf of candidates for NCC or other elected office, nor for or against any legislative matter before the NCC Board or membership.

**Deadline for all submissions is the 15th of the prior month.**

Artwork must be submitted in electronic (jpeg, tiff or bmp) format, unless special arrangements have been made in advance with the editor.

## Advertising Rates

### Display Advertising (camera-ready, submitted electronically):

Full Page	\$50.00
3/4 Page	\$40.00
1/2 Page	\$30.00
1/4 Page	\$20.00
1/8 Page	\$15.00

(Add \$5.00 for each photograph)

Electronic submission must be in Adobe PDF, PageMaker or Word. For other file types, call or e-mail in advance to make arrangements.

### Classified Advertising:

10 cents per word; \$2.00 minimum  
(Abbreviations and initials count as words)

### Dealer Directory:

\$24.00 for twelve-month contract  
Text limited by standard box size (see page 19)  
Includes FREE listing on NCC website

### Payment for Advertising

- Payment in full must be received before advertising will be run.
- Mail all payments to: NCC PO Box 416 Cambridge, OH 43725
- Ad copy must be received by us no later than 10th of the month preceding publication. Copy may be submitted by regular or electronic mail.

Submit Ad copy electronically to: [NCCCrystalBall@aol.com](mailto:NCCCrystalBall@aol.com)

# e

## Crystal Ball

The electronic Crystal Ball is ready to go! After nearly a year of planning, and three test issues, we are pleased to announce the launch of a new generation of NCC communication.

We are currently collecting e-mail addresses of NCC members who wish to receive The Crystal Ball in electronic form, via the Internet. At this time, this will be in addition to the regular, paper Crystal Ball, which you will continue to receive in the mail every month, whether you opt to get the electronic version or not.

If you'd like to begin receiving the electronic Crystal Ball, please send an e-mail to:

**[NCCCrystalBall@aol.com](mailto:NCCCrystalBall@aol.com)**

Just include your name and membership number (it's on your current Crystal Ball mailing label). The first electronic version to be widely distributed will be in January 2005.

### In Memoriam

The Crystal Ball offers condolences to NCC Board member Sharon Miller and her family on the death of Sharon's mother, Dorothy Ellen Vornholt.



THE 20-30-40 SOCIETY  
OUR 6TH GREAT YEAR AT

**CONCORD PLACE  
MIDWEST CONFERENCE CENTER**

401 West Lake Street  
Northlake, Illinois

**CHICAGOLAND'S 33rd ANNUAL  
DEPRESSION ERA GLASS SHOW AND SALE**

**MARCH 12TH & 13TH, 2005**

SATURDAY 10AM - 5PM and SUNDAY 11AM - 4PM

ADMISSION \$7.00 PER PERSON

\$6 with this ad, limit 2

FREE PARKING WITH SHUTTLE BUS

**GREAT FOR COLLECTORS**

**SPECIAL GUESTS**

Tim Schmidt, author of *Central Glass Works, The Depression Era*  
Laura Marsh, author of *Imperial Glass, Lace Edge*

**GLASS**

HEISEY • CAMBRIDGE • HAZEL ATLAS • CENTRAL • FOSTORIA • IMPERIAL  
FENTON • HOCKING • FRY • INDIANA • STEUBEN • CONSOLIDATED  
ALADDIN • DUNCAN MILLER • PADEN CITY • TIFFIN • WESTMORELAND

**POTTERY**

FIESTA • HALL • ROSEVILLE • SHAWNEE • McCOY

Glass Identification • Reference Library  
Glass Repair • Door Prizes

**20-30-40 SOCIETY, INC.**

7006 HIGH ROAD  
DARIEN, IL 60561-3957

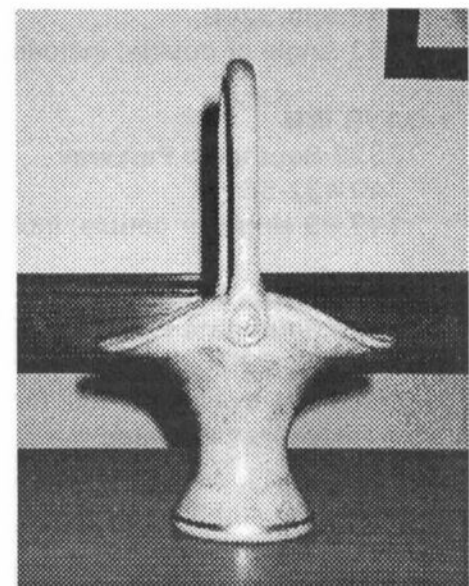
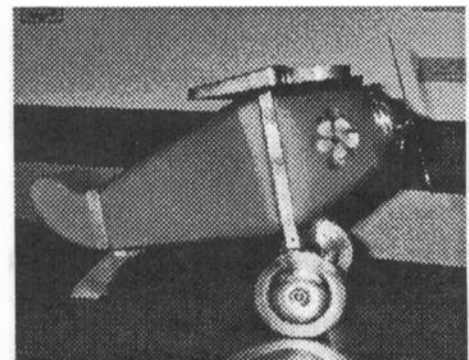
E-Mail: SCHMIDT.TIM@COMCAST.NET  
WEBSITE: HTTP://WWW.20-30-40society.org

**See the Crystal Ball  
photos in color, on-line**

at [www.crystalballphotos.org](http://www.crystalballphotos.org)  
password: snowfall

**Auction  
Sneak Peek...**

Just three of the nearly 400 lots of Cambridge Glass in the March Auction... more photos & the complete catalog in next month's Crystal Ball.



## Auction Weekend Hotels March Event is Closer Than You Think

Rates are for Thursday, March 3 through Sunday, March 6, 2005. If you arrive before Thursday, you may have to pay a higher rate for those days. Remember to ask for the National Cambridge Collectors Rate. All of these motels are located in Cambridge at Exit 178, Ohio Route 209, off Interstate 70. There are limited rooms available at these rates. When those rooms are booked, rates may be higher.

**Important:** These special rates are usually available only at the local motel, and not through each chain's "800" number or website. You are advised to reserve by calling the motel in Cambridge directly.

- **AMERIHOST** (*Indoor pool*)  
State Route 209 South  
740 439-1505  
\$55 single or double; includes continental breakfast
- **BEST WESTERN**  
1945 Southgate Parkway  
740 439-3581  
\$38 single or double; includes continental breakfast
- **HOLIDAY INN**  
2248 Southgate Parkway  
740 432-7313  
\$69/night [2 or more night stay]
- **COMFORT INN** (*Indoor Pool*)  
2327 Southgate Parkway  
740 435-3200  
\$50 single or double; includes continental breakfast
- **DAYS INN**  
2328 Southgate Parkway  
740 432-5691  
\$49.99 single or double; includes continental breakfast
- **DEER CREEK** (*Indoor pool*)  
2325 Southgate Parkway  
740 432-6391  
Discounts available – call for rates  
Weekly rates available

## Glass Pass Update

By Cindy Arent

The quarterly meeting of Glass Pass participants was held November 11 at Fenton Art Glass in Williamstown, West Virginia. We were honored to have Mr. Frank Fenton attend the meeting. Jena Blair, from Fenton Art Glass, planned the activities for the day which included a luncheon meeting, tour of the factory and a special tour of the Museum by Mr. Fenton.

Debbie Robinson, Executive Director of the Cambridge/Guernsey County Visitors and Convention Bureau, conducted the meeting and planning



Meeting Frank Fenton

session. Many good ideas were generated for the 2005 Glass Pass package. There is a possibility of 17 participants from the Ohio Valley which includes many glass museums, factories and Visitors & Convention Bureaus from Ohio, West Virginia and possibly Pennsylvania. Jena Blair will design the new brochure that will make its first appearance at a large travel show in February. The Visitors Bureaus will be promoting the Glass Pass as a "Specialty Tour" to tour operators from several states.

continued on page 17

**National Museum of Cambridge Glass**

CLOSED FOR THE SEASON • SEE YOU IN APRIL

# Study Groups:

## Study Group #13

### Miami Valley Study Group

The meeting of October 12 was called to order at 7:00 p.m. by vice president Ron Hufford.

There were 10 members present: Ron and Norma Hufford, Bev Accord, Mac and Georgia Otten, John and Helen Wilt, Frank and Vicki Wollenhaupt, David Rankin.

It was moved to dispense with the reading of the minutes since copies were sent to all members.

The treasurer's report showed a balance of \$432.22.

#### OLD BUSINESS

Georgia Otten reported she is writing an article for the Crystal Ball about the study group programs we are doing on disc.

Frank Wollenhaupt is doing a layout for the colors book to show the board at the November meeting.

#### NEW BUSINESS

We were reminded the quarterly meeting will be November 6, 2004, at the Holiday Inn, Cambridge, Ohio.

There was no other business. David Rankin made a motion to adjourn. It was seconded by Frank Wollenhaupt.

#### PROGRAM

Each person who brought them presented creamers and sugars.

Respectfully submitted  
Norma Hufford, Secretary

## Study Group #15

### North Texas Study Group

A dozen Cambridge collectors and guests converged on the Chili's restaurant in Waxahachie Texas for dinner on October 16. We had been to the "Age of Elegance" glass show for a day of shopping and looking and were ready for dinner.

The discussion topic for this meeting focused on what people saw at the show, such as numerous vases, a pair of 3011 crown tuscan candleholders with ebony bobeches and leaf prisms, primrose vase and basket. Study group members provided two impressive displays. The first display was a 6" round table featuring NearCut Daisy pieces. The second display was 8 feet of Caprice. Gwenell Pierce did such an outstanding job that an expanded display will be featured at Kent Washburn's San Antonio show in February 2005.

We also talked about plans for next year's National Depression Glass Association show, to be held here in July 2005. Everyone is excited by the challenge and ready to support it.

Show and tell at the dinner table included: #79 9-inch Ebon vase with sea gull decoration, #274 10 inch Ebony vase with 743 etching (hearts), 20 oz. martini pitcher with Vichy etching, 3011 Amethyst wine, unknown tumble-up set along with a cream and sugar set.

The Cambridge book table staffed by Jeannie and Freeman Moore was successful. We sold numerous books and 2 pairs of Scotty Dogs. The next meeting will be our holiday meeting combined with dinner and exchange. The rules are for a blind exchange, value greater than \$20 but found for less.

Submitted by Freeman Moore

*Below: Nearcut Daisy on display at Waxahachie, TX*



## ANNUAL WINTER ANTIQUES & COLLECTIBLES MARKET

SUNDAY, FEBRUARY 6TH, 2005

10:00 AM - 5:00 PM

FREEPORT RECREATIONAL CENTER

130 EAST MERRICK ROAD

FREEPORT, LI, NY

DONATION \$4.00

ADMIT 2 AT \$3.50 EACH

WITH THIS AD

OVER 45 DEALERS

FOOD ON PREMISES

FREE PARKING

*Sponsored by*

*Long Island Depression Glass Society, Ltd.*

**For information, call (516) 798-0492**



# Events:

If you know about any upcoming glass shows or other glass events, please pass the word on to us at least six to eight weeks before the show dates. These listings are free of charge.

## Mark Your Calendar



**March Quarterly Meeting & Auction Preview**  
Friday, March 4, 7:00 pm

**Cambridge Auction**  
Saturday, March 5  
Preview: 9:00 am  
Auction: 10:00 am

## Upcoming Glass Shows, Etc.

### January 28-30, 2005:

Sanlando DG Show  
Sanford, FL  
Call: (407) 298-3355

### February 5 & 6, 2005:

South Florida DG Show  
Ft. Lauderdale, FL  
Call: (305) 884-0335  
E-mail:  
fboches@cheshirecatantiques.com

### February 6, 2005:

Long Island DG Show  
Freeport, NY  
Call: (516) 798-0492

### March 4-5, 2005:

Garden State DG Club Show  
Laurence Harbor, NJ  
E-mail:  
Trash-to-Treasures@rcn.com

### March 12-13, 2005:

20-30-40 Society Show  
Northlake, IL  
Call: (630) 734-9912  
E-mail: schmidt.tim@comcast.net

### July 9-10, 2005:

National Depression Glass Assn.  
31st Annual Show & Sale  
Waxahatchie, TX  
Call: (972) 286-2699  
E-mail: bluedart99@hotmail.com



## Cobalt Blue Scotties

### \$100/pair

*plus \$10 shipping*

Mail orders to  
NCC Blue Scotties  
PO Box 416 Cambridge OH 43725



*NCC Board Member Rick Jones with an impressive display of Azurite at the Connecticut Glass Show in Southington, CT on Halloween weekend. This show is held annually to benefit the NCC, which gets 100% of the profits.*

*Photo courtesy of Bob Morotto.*



# Lynn Welker

2 East Main Street  
New Concord, OH 43762

(740) 826-7414  
(740) 705-1099

Prices Each, UPS extra  
(# in parenthesis indicates multiples)

## CAPRICE, CRYSTAL:

#165 6" 3-ftd Candy & Cover	35.
#117 3 oz Cruet & Stopper	30.
#75 4-piece Epergne	90.
#40 ind. Sugar & Creamer (set)	15.
#37 6" oval handled Tray	15.
#97 3-piece Salt, Pepper, Tray	40.
#103 12" Celery	50.
#170 6.5" Club Dish	40.
#173 Cloverleaf Dish	40.
#183 80 oz Ball Jug Pitcher	100.
#179 32 oz Ball Jug Pitcher	125.
#300 Iced Teas (6)	15.
#300 Cocktails (6)	15.
#67 2.5" low Candlesticks (pr)	25.
#69 7.5" 2-holder Candlestick [rare]	200.
<i>Call for much more Crystal Caprice!</i>	

## CAPRICE, MOONLIGHT BLUE:

#300 Iced Teas (6)	40.
#300 Goblets (6)	40.
#300 Oyster Cocktails (8)	40.
#1 9 oz Goblets (6)	40.
#2 7 oz Tall Sherbets (4)	25.
#184 12 oz Tumblers (6)	40.
#165 6" 3-ftd Candy & Cover	100.
#54 10.5" belled ftd Bowl	70.
#70 7" prism Candlesticks (pr)	80.
#87 Mustard & Cover	140.
#93 2.5" indiv. Nut Dishes (4)	35.
<i>Call for much more Blue Caprice!</i>	

## CHANTILLY:

#3625 10 oz Goblets (2)	28.
#3625 10 oz ftd Tumblers (4)	25.
#3625 4.5 oz Oyster Cocktails (3)	22.
#3900/17 Cups & Saucers (8 sets)	25.
P306 6" Candy Box & Cover	85.
#128 Martha 12" hldd Cake Plate	50.

## DIANE:

#3122 10 oz ftd Tumblers (4)	20.
#3122 Low Sherbets (4)	15.
#3500/148 5.5" Comport	40.

## MORE DIANE:

#3400/160 12" ftd oblong Bowl	65.
#3400/74 5" Master Nut Dish	45.
ROSEPOINT:	
#3500 10 oz Goblets (8)	38.
#3121 10 oz Goblets (7)	35.
#3400/141 80 oz Doulton Jug	325.
#3500/14 Lg. Sugar & Creamer (set)	45.
#3400/647 6" 2-lite Candlesticks (pr)	90.
#3400/111 3-piece Mayo Set, ftd	75.
#3400/90 6" 2-part Relish	35.
#3400/54 Cups & Saucers (4 sets)	35.
#3900/17 Cups & Saucers (4 sets)	35.
#3500/1 Cups & Saucers (6 sets)	35.
#3121/3 5.5" Blown Candy Comport & Cover	175.

## ELAINE:

#3500 10 oz Goblets (5)	28.
#3500/14 Sugar & Creamer (set)	35.
#3500/36 6" tall Comport, twist	50.
WILDFLOWER:	
#3400/115 13 oz Barrel Tumblers (6)	38.
#3900/62 12" ftd Bowl	65.
#3400/13 6" 4-ftd Bonbon	30.

## CANDELABRA & ARMS PARTS:

#19-1 Bobeches w/8 Prisms for Arms (3)	38.
#2355 8" ruffled Epergne Vase (2)	25.
#2355 7" Vase for Arms (3)	28.
#2355 6" Ruffled Epergne Vase (2)	22.
Small Arm for 6" vases	14.
Center bobèche, 6 prisms for Arms (2)	36.
#1358 3-light Candelabra w Bobeches (2)	120.

## SWANS (+ INDICATES "SIGNED"):

#1044 Peachblo 10.5" St I (fin chip)	200.
#1043 Mand. Gold 8.5" St III	125.
#1042 Peachblo 6.5" St I +	100.
#1042 Lt Emerald 6.5" St I +	100.
#1041 Ebony 4.5" St I +	85.
#1041 Lt Emerald 4.5" St I +	55.
#1040 Carmen 3" St III	85.

## MORE SWANS:

#1040 Ebony 3" St III +	60.
#1040 Peachblo 3" St II +	40.
#1040 Lt Emerald 3" St II +	40.
#1040 Mocha 3" St II +	85.
#1040 Mand Gold 3" St III	35.
#1040 Crown Tuscan 3" St III	30.
<i>Call for even more Swans!</i>	

## COLORED CAMBRIDGE:

Royal Blue #3121 Tall Comport	65.
Carmen #1066 Ivy Ball	40.
Mand Gold 10" Cornucopia Vases (pr)	65.
Emerald Caprice #66 13" ftd Bowl	75.
Amber Caprice Decanter & 6 Glasses	350.
Mand Gold Cascade Sugar & Creamer (pr)	65.
Smoke Georgian Basket, Crystal Handle	45.
Azurite Community 7.5" Candles (pr)	75.
Amethyst Tall Joes (2)	12.
Amber Tall Joes (2)	12.
Mandarin Gold Tall Joes (2)	12.
Rubina 8.5" Comport [good color]	125.
Mand Gold Bowl, Amber Stem #3035 Wines (6)	30.
Crown Tuscan #110 Dolphin Seafoods (2)	40.
Moonlight Blue #3400 9.5" Dinner Plates (6)	20.

## MISCELLANEOUS CRYSTAL CAMBRIDGE:

Gloria etch #851 Ice Bucket	100.
Portia etch #3400/38 5 oz Tumblers (2)	35.
Eagle Ctr Handled Relish #1675	40.
Horn of Plenty #577 8" vase	30.

# The ABC's of Glassmaking

## Part II • N thru Z

*From the Field Trip Curriculum, developed by Sharon Miller and Cindy Arent, as a teaching tool for local 4th Grade students who are visiting The National Museum of Cambridge Glass.  
(Continued from A thru M, in November's Crystal Ball)*

- N**atural Resources                      The abundance of coal, natural gas and sand was the reason Cambridge Glass built its factory in Guernsey County.
- O**wl Lamp                                A glass owl, which worked as a lamp, was one of the unique pieces produced by the Cambridge Glass Company.
- P**hysical Change                      The chemical process that occurs when sand alkali and other materials are melted together to produce glass.
- Q**uitting Time                            At the end of each day, the workers would punch out using their time cards.
- R**estaurant                                There was a restaurant at the factory, where workers could have lunch.
- S**nap/Punty                                An iron rod used to hold and turn the hot glass.
- T**ime Clock                                The large, wooden clock used to mark the arrival and departure of the glass workers from their shift.
- U**ranium Oxide                            A chemical used to produce glass.
- V**arsity Ware                              A line of glass items decorated with college logos.
- W**ax                                        Beeswax was used in the etching process to keep the acid from eating the glass.
- X** Pitcher                                 The "Big X" Pitcher was the first piece of Cambridge Glass produced by the company (made by Hugh McManus in 1902)
- Y**ardley Jars                                Cambridge produced small jars for the Yardley Cosmetic Company.
- Z**inc Oxide                                 Another chemical used to produce glass.

*And now you know the A-B-C's of glassmaking!*

# eBay Report:

## Swans:

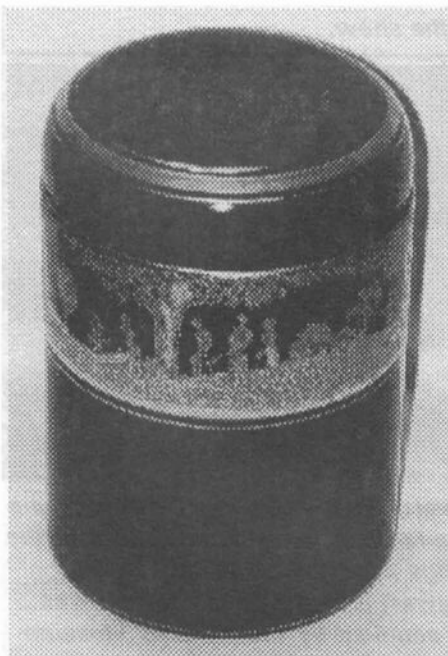
- A beautiful, 12" Crown Tuscan Swan sold on 10/11 for \$540.

## Various Etches:

- A lovely #3400 Gold Krystol globe vase, etched Wildflower, sold on 10/5 for \$129.
- A Dark Emerald Comport, etched Diane, with crystal 'stretched' key-hole stem & foot, sold on 10/16 for \$401.
- A Light Emerald covered pitcher and six matching tumblers, all gold-encrusted Hunt Scene etch, sold on 10/3 for \$1,291.

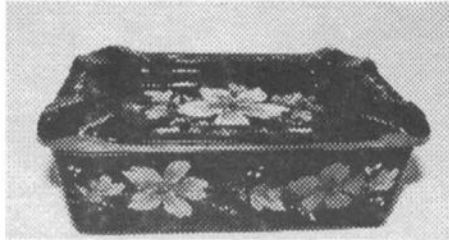


- A very rare Cigar Humidor with gold-encrusted Golf Scene, sold on 9/26 for \$1,626.



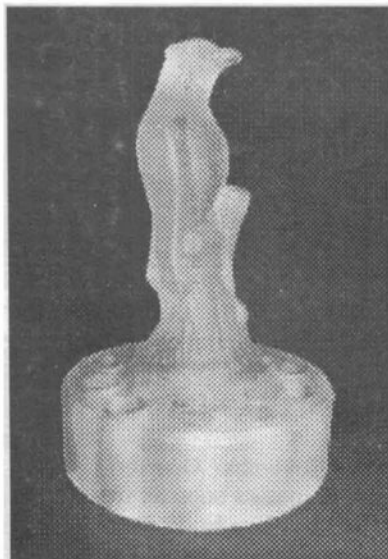
## Enamels:

- A goblet (unrecognized stem) with a Gold enamel rim and Nanking Green Willow Scene enamel sold on 9/27 for \$69.
- An ebony cigarette box with ash-tray lid, enameled with multi-colored flowers, sold on 10/9 for \$589.



## Flower Frogs:

- A 13" Draped Lady, frosted Moonlight Blue, sold on 9/24 for \$475.
- A Two Kid in frosted pink (Rose du Barry) sold on 10/9 for \$213.
- A Peachblo Two-Bun Geisha sold on 11/16 for \$839.
- A hard-to-find Eagle in frosted crystal sold on 10/9 for \$432.



## Rosepoint:

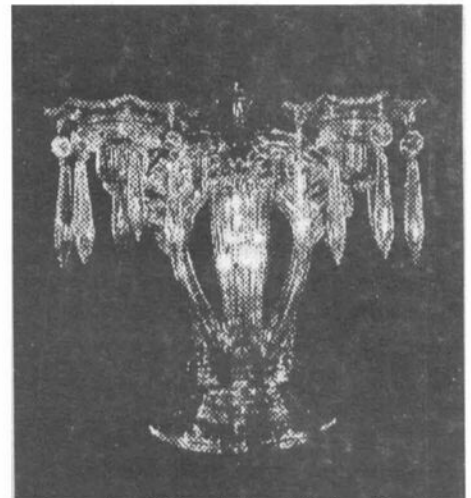
- A rare pressed Rosepoint Goblet, with a Rosepoint etched bowl, sold on 10/29 for \$310. A matching Low Sherbet sold the same day for \$260.
- An unusual 20 oz. Pitcher, etched Rosepoint, sold on 11/4 for \$330.
- A large Rosepoint Hat (9.5" across the brim) sold on 11/12 for \$1,025.

## Nudes:

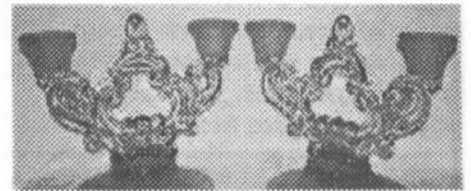
- A #3011 Claret in Heatherbloom sold on 10/29 for \$257.
- A #3011 Ivy Ball in Carmen sold on 10/23 for \$198.

## Miscellaneous:

- A highly prized Moonlight Blue Caprice Cake Salver did not sell; the high bid of \$1,575 did not meet the reserve.
- A single #1442 "Lyre" Candleholder, sold on 10/28 for \$150.



- A pair of keyhole 2-light Candlesticks in Pink, with frosted foot and cups, sold on 10/27 for \$190.



- A Royal Blue Prism Sign sold on 11/6 for \$248.
- A lovely 8-piece juice set (lidded pitcher & six #1630 glasses) with blue enamelled "Blue Willow" decoration and gold rim, sold on 11/5 for \$735.
- A Moonstone (Crystal, frosted on the inside) large Shell Center vase sold on 11/7 for \$200.
- A Crystal Ram's Head Refractory Bowl ("bathtub"), etched Elaine, sold on 11/9 for \$351.



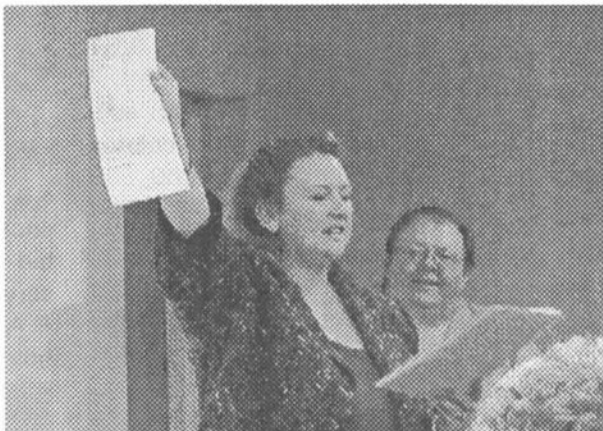
# Program on #3011 Nude Stems at the November Quarterly Meeting

Nearly a hundred avid Cambridge collectors gathered on November 6th at the Holiday Inn of Cambridge for an evening of fellowship, club business and education.

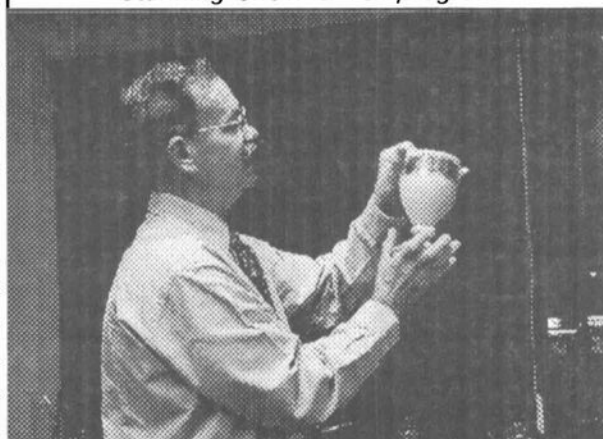
The evening began with a cocktail hour, during which members examined the beautiful array of over 120 Cambridge Nudes. Dinner followed; a buffet of chicken, roast beef, vegetable lasagna, green beans, buttered red potatoes and salad. The fruit pies for dessert topped off the culinary portion of the event.

Soon after the plates were cleared, President Ken Filippini called the NCC's November Quarterly Meeting to order. The meeting moved swiftly... everyone was anxious to get to the waiting nudes!

The program was presented by Shelley Cole and Alex Citron, of Charlottesville, Virginia. Shelley is the NCC Convention chairwoman and a member of the Board of Directors. Her husband, Alex, serves as Executive Editor of The Crystal Ball. They brought about sixty nudes from their own



*Above: Shelley Cole and Alex Citron deliver an educational program on the #3011 Line  
Below: Lynn Welker examines a Crown Tuscan urn with unusual decoration during a stunning Show & Tell program*

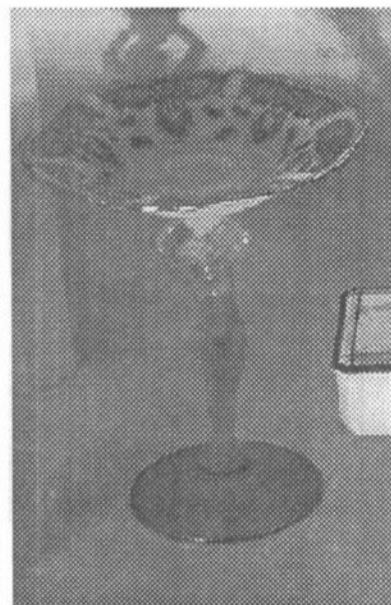


*Above Right: A Crown Tuscan Nude Comport with Gold-encrusted Minerva; one of the stars of the show.*

collection, supplementing the display with another sixty from the collections of other members.

The display included at least one example of each nude shape and at least one example of every nude production color. Most of the etches and cuttings known on the line were also displayed.

continued on page 15



## Nude Stem Program Color Chart Update

For those of you who were able to attend the November Quarterly Meeting and program on Nude Stems, please note that as soon as the program was over, additional information came in. The Nude Stem Chart has been published in this month's issue of The Crystal Ball on page 13. Please take a look to see that there are additional colors known on several of the different pieces. If you know of other colors that are not included on the chart, please let me know. I'll do my best to keep it updated. slcunicorn@aol.com

We again would like to thank everyone who brought glassware to share. We should all be proud of the display that was present at this event. And thanks to everyone who attended. I think we all learned new things. If you're interested in presenting a program at the November meeting next year, please get in touch with David Ray at westervillesh@hotmail.com. It's the best way to learn more about Cambridge Glass and it's lots of fun!!



*Blair Stewart, who worked as a cutter in the Cambridge factory, looks over a photo of the cuttings department, vintage 1937.*

*Mr. Stewart is in the photo, which was recently acquired by the National Museum of Cambridge Glass.*





# *Minutes of the August Quarterly Meeting:*

President Ken Filippini called the Quarterly Membership Meeting of the National Cambridge Collectors Inc. to order at 1:18 p.m. on August 21, 2004 at Theo's Restaurant.

Georgia Otten presented a check to the NCC in the amount of \$555.71 from the Miami Valley Study Group. This represented the profits to date from the three DVDs the group produced and offered for sale.

Rick Jones moved to defer the reading of the minutes, second by Georgia Otten. Motion carried.

## **Treasurer's Report:**

Treasurer Dennis Snyder reported on the organizations financial activities from January 1, 2004 through June 30, 2004.

Account balances were:

	1/1/04	6/30/04
Operating	\$49,262	\$55,000
Special Activity	\$17,603	\$39,151
Century Club	\$24,553	\$5,480
Endowment	\$42,949	\$45,924
Total	\$134,366	\$149,196

Dennis also stated that the mortgage balance on the museum loan was approximately \$60,000.

## **Committee Reports:**

Archives - Mark Nye. The research room is open.

Publications - Mark Nye. We will be working on a new Colors book and printing the 49-53 catalog. Also we are working on reprinting the Etchings by Cambridge book.

Acquisitions - Lynn Welker. A large group of swans with small damages was acquired. They will be used in the museum display. Also a Rose Point decanter and Rose Point chandelier was acquired. Members are asked to consider donations of glass to the gift shop. Most gift shop items are priced around \$10.

Crystal Ball - Alex Citron. Progress is being made on the electronic version of the Crystal Ball; we hope to have the first issue soon

Endowment - Rick Jones. We are looking for legal experts among the membership that might be willing to help with wills/bequests to benefit the organization. Ron Timmons of Wittenburg University will help with fund raising.

Facilities - Carl Beynon. The roof project has been started but has been delayed several weeks due to the long period of rainy weather. The project is currently in the 7<sup>th</sup> week and is more than 75% completed.

Grants and Fundraising - Sharon Miller. A big thank you to Fleur de Lys Healy for her generous donation and incentive for the roof project. Also the board approved the split of the Century Club money received after September 1 to be divided 50% to the endowment fund and 50% to reduce the mortgage.

Long-Range Planning - Doug Ingraham. Doug said the meeting with the Board this morning was very successful. He will be seeking input from all members as we develop our long-range goals.

Membership - Linda Adkins. There are 1202 Total members, 813 master members, 359 associate members, 6 honorary members and 5 life members.

Budget and Finance - Mike Strebler. Working on the 10 year forecast; hopes to have a report by November's meeting.

Museum - Cindy Arent. The museum was honored to have members of the Shepard family visit. We also now have a reciprocal loan agreement with the Historical Society. Now planning for next year's activities. There will be educational field trips by 4<sup>th</sup> grade students to the museum next year also.

Nominating - Rick Jones. The seats open this year are: Rick Jones, Ken Filippini, and Dennis Snyder.

Programs - David Ray. The program at the November meeting will be Nudes. Alex Citron and Shelley Cole will be the presenters. If you have unusual items, please contact them.

Publicity - Cindy Arent. Imperial and Fenton will join the Glass Pass also. Lorraine has contacted the AAA and the NCC museum will be in the AAA guidebook next year. Admissions will be \$3.00 next year.

Study Clubs - Judy Rhoads. We had a very successful meeting during the convention. If you are interested in starting or attending a study group, please contact Judy.

Auction - Lynn Welker. Lynn reported that the auction will be the first weekend in March. It's not too early to send your auction lists in.

Convention - Shelley Cole. A total of 190 people attended this year's convention. The theme for 2005 will be Let Me Entertain You.

Glass Dash - Larry Everett. Larry thanked the members of the Miami Valley Study Group for all their help with this event. This year's glass dash was very successful. Additional dealers would be welcome.

**Old business:**  
None.

## **New Business:**

Lynn Welker asked for pieces of Imperial glass that might be donated or on loan in the educational area. These pieces would be placed beside their Cambridge counterparts.

Rick Jones moved to adjourn. Second by Cindy Arent. Motion carried. The meeting adjourned at 2:15 P.M.

Respectfully submitted,

Larry Everett, Ph.D.  
NCC Secretary

# November Program

from page 12

Among the unusual Nudes displayed were a complete set of all seven Cocktails with Crown Tuscan stem and colored bowl: Carmen, Royal Blue, Amber, Amethyst, Forest Green, Gold Krystal and Topaz. Nobody present could recall ever seeing all seven colors in one place before; in fact, it took three member collections to do it for the program!

The display also featured Nudes with silver overlays of flowers and ducks, gold bands, platinum bands, black enamel decorations and the red "Canadian Club" advertising script.

The museum's famous red, white & blue Nude Brandy was displayed, as well as the equally rare Moonlight Blue Cocktail, with the bowl frosted on the inside. And one collector brought along an experimental #3011 Claret with a Tangerine bowl. There has never been a display of Cambridge Nudes to surpass this one!

At the evening's end, while the generous, exhibiting participants were packing up their treasures, Program Chairman David Ray had one remaining request. He's hoping to get an equally impressive display and educational program for next November, so if you want to volunteer - or even if you just have a good idea - get in touch with David.

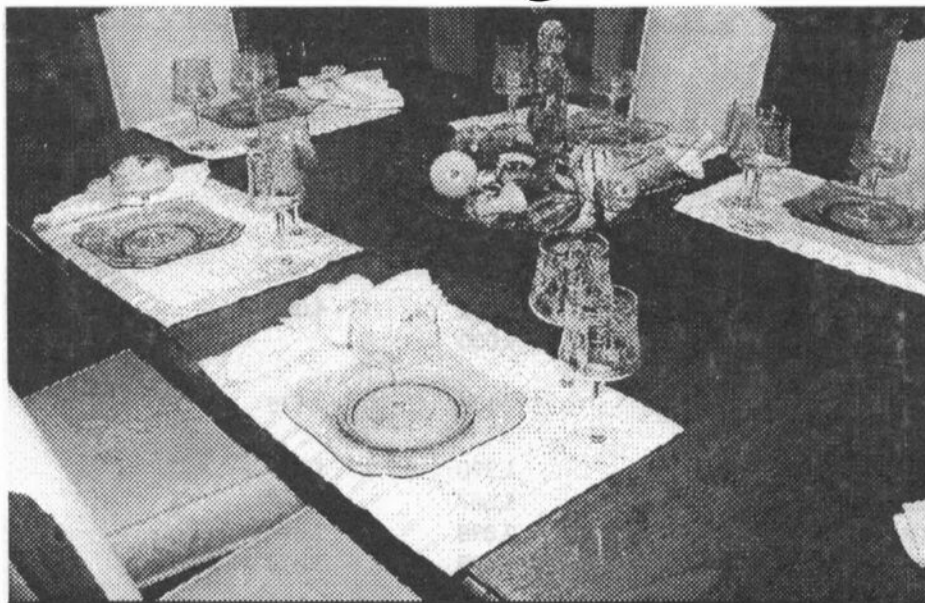
He can be reached through the NCC's mailing address or via e-mail at:

[westervillesh@hotmail.com](mailto:westervillesh@hotmail.com)



*Judy Rhoads, Lorraine Weinman, Mark Nye and Betty Sivard at the November Quarterly Meeting & Educational Program*

# A Cambridge Table



*Jim and Nancy Finley of Sedalia, MO, sent us this photo of their dining room table set for a party in October. It's always great to see how collectors use their Cambridge Glass on special occasions. We particularly enjoy the Harvest Centerpiece. Share your special use of Cambridge Glass; e-mail pictures to [NccCrystalBall@aol.com](mailto:NccCrystalBall@aol.com)*



Glass Repair  
Snack Bar • Door Prizes

## South Florida Depression Glass Club 31st Annual Show & Sale

*American Elegant & Depression Glass,  
Dinnerware, Pottery*

**February 5 & 6, 2005**

**War Memorial Auditorium  
800 N.E. 8th Street  
Ft. Lauderdale, FL**

**Saturday 10 am - 5 pm  
Sunday 10 am - 4 pm**

**Admission: \$5.00**  
(50¢ off with this card)

*Directions: I-95 to Sunrise Blvd. East,  
turn South on US 1 for 2 blocks*

*Information: 305-884-0335  
[fboches@cheshirecatantiques.com](mailto:fboches@cheshirecatantiques.com)*

# Financial Summary - Year Ended 12/31/03

## **INCOME PROVIDED FROM: TOTAL OPERATIONS SPECIAL FUNDS CENTURY CLUB ENDOWMENT**

Membership Dues	18,220	18,220			
Advertising Income	1,094	1,094			
Donations: Recurring Cash	6,822	6,702			120
Century Club	15,985			10,698	5,287
Rosepoint Acq.	2,585		2,585		
Capital Cash	17,000		17,000		
Recurring Non-Cash	4,052	4,052			
Capital Non-Cash	9,000		9,000		
Allocated Grant Income	170	170			
Convention/Mtgs (net)	1,390	1,390			
Auction (net)	5,687	5,687			
Glass Show (net)	2,898	2,898			
Glass Dash (net)	3,098	3,098			
Book Sales (net)	6,877	6,877			
Scotties (net)	1,224	1,224			
All Other Sales (net)	3,335	3,335			
Museum Admissions	3,752	3,752			
Parking Permits	3,173	3,173			
Investment Income	657	185		210	262
<b><u>TOTAL INCOME</u></b>	<b><u>107,019</u></b>	<b><u>61,857</u></b>	<b><u>28,585</u></b>	<b><u>10,908</u></b>	<b><u>5,669</u></b>

## **INCOME USED FOR:**

Crystal Ball (incl postage)	-13,808	-13,808			
Museum Payroll	-7,413	-7,413			
Administration Payroll	-2,444	-2,444			
Operations/Maint: Museum	-11,384	-11,384			
Operations/Maint: Service	-1,409	-1,409			
Penny Court Facility	-1,200	-1,200			
Advertising	-1,552	-1,552			
Fixed Administrative Costs	-9,898	-9,012		-886	
Depreciation & Amortization	-21,579	-21,579			
Mortgage Interest	-4,618	-4,618			
<b><u>TOTAL EXPENSES</u></b>	<b><u>-75,305</u></b>	<b><u>-74,419</u></b>	<b><u>0</u></b>	<b><u>-886</u></b>	<b><u>0</u></b>
<b><u>NET REPORTABLE INCOME</u></b>	<b><u>31,714</u></b>	<b><u>-12,562</u></b>	<b><u>28,585</u></b>	<b><u>10,022</u></b>	<b><u>5,669</u></b>

---

<b><u>2003 NET CASH FLOW</u></b>	<b><u>29,027</u></b>	<b><u>-6,293</u></b>	<b><u>16,943</u></b>	<b><u>10,908</u></b>	<b><u>7,469</u></b>
<b><u>CASH BALANCES: 01/01/03</u></b>	<b><u>105,340</u></b>	<b><u>55,555</u></b>	<b><u>660</u></b>	<b><u>13,645</u></b>	<b><u>35,480</u></b>
<b><u>CASH BALANCES: 12/31/03</u></b>	<b><u>134,367</u></b>	<b><u>49,262</u></b>	<b><u>17,603</u></b>	<b><u>24,553</u></b>	<b><u>42,949</u></b>



# New Year's Day Auction

starts at 10:00 a.m.

## SHADOW AUCTION BARN

1517 MAPLE AVENUE • TERRE HAUTE, INDIANA  
(812) 232-3774 • SHADOWAUCTION@AOL.COM

Over 150 pieces of **Cambridge Caprice**, mostly **Moonlight Blue**, mint condition  
5 sets of glassware (in sets of 12) #300 series: 3 oz, 6 oz and 9 oz

Also #1 water and #7 cocktail (pressed)

Other items: Horn of Plenty, Ice Bucket w/ Handle & Tongs, 6" Rose Bowl (2), 80 oz Ball Pitcher, Candy Dish w/ Lid, Mayo w/ Underplate & blue spoon, Sugar/Creamer in large & small sizes, Cruets w/ Tray, S&P w/ Handled Tray, Candlesticks w/ Prism, Crimped Bowls, Cabaret Plate, Cigarette Holder w/ Lid, etc. This is only a partial list!

Pictures can be seen at [www.shadowauction.com](http://www.shadowauction.com) as of **Monday, 12/27/04**  
Yes, they will take absentee bids and phone bids. Plan to attend.

## Glass Pass Update

from page 6

The glass attractions that will be participating next year are; The National Museum of Cambridge Glass, The National Heisey Glass Museum, The Degenhart Paperweight and Glass Museum, Fenton Art Glass, Mosser Glass, The National Imperial Glass Museum, The Baker Family Museum, The Works, and Hufford House. There is also a possibility that the Duncan Miller Glass Museum in Washington, PA will join the group. We are in the process of trying to contact them.

This is a wonderful chance to promote the glass heritage of the region. Since most participants are located along I-70 and I-77, this package is perfect for tour groups. Hopefully by working and networking together, we can improve attendance at our museums and factories and make the glass industry better known to the public. You will also be able to download the new brochure from the VCB's website. This is a tremendous opportunity for everyone involved!

Editor's Note: Plans are in the works for field trips to the Fenton Factory and Museum as part of our 2005 NCC Convention. This is an opportunity no glass collector should miss. Details will follow in the spring!

## HELP WANTED

With major museum projects in good order, the Board is again turning toward our future and thinking about the most sensible plan for the Endowment Fund. We have one generous member with university development experience already pitching in. We would like to know if there are other members with related experience who would be willing to help; notably in the areas of legal affairs and estate planning. We also seek expertise in trademark and copyright law.

We are not sure what the ultimate roles would be, but wanted to survey our membership's expertise and find out what resources might be at our disposal.

If you think you can help in any or all of these areas, please call President Ken Filippini at (201) 670-0990.

Thank you!



## Stems Without Thorns

As the world's largest supplier of old & new china, crystal, silver and collectibles, Replacements, Ltd. has more than 700 different patterns of Cambridge crystal.

And however much we enjoy selling pieces that were once thought irreplaceable, we love buying them as well. Thanks to people like you, our crystal inventory currently numbers in the hundreds of thousands, and the numbers keep growing every year.

So, if you've been unsuccessfully searching for that elusive piece of Cambridge — or any other type of fine crystal — call us for a free list of pieces available in your pattern. And, if you're looking to sell pieces you currently have, we can help you there, too.

**REPLACEMENTS, LTD.**  
China, Crystal & Silver • Old & New

**1-800-REPLACE**  
(1-800-737-5223)

1089 Knox Road,  
PO Box 26029, Dept. CB,  
Greensboro, NC 27420  
[www.replacements.com](http://www.replacements.com)

## For Sale:

Bexley Cordial (4)	each set of 2	\$60.00
Candlelight 7.25" plate (7)	each	\$18.00
Candlelight 3900/54 10" ftd bowl		\$75.00
Caprice Cream & Sugar, crystal	set	\$45.00
Chantilly 3600 2.5 oz Cocktail (3)	all for	\$70.00
Chantilly 3779 Water (2)	both for	\$65.00
Chantilly Creamer (2)	each	\$27.50
Chantilly 7.5" Plate (12)	each	\$18.00
Chantilly 3900/1177 Salt w/Lid		\$35.00
Corinth Cup & Saucer (20)	each set of 4	\$75.00
Daffodil double Candlestick		\$50.00
Granada 3 oz Cocktail (6)	all for	\$90.00
Laurel Wreath 3139 Sherbet (2)	both for	\$35.00
Laurel Wreath 3139 Claret (2)	both for	\$65.00
Laurel Wreath double Candlestick	pair	\$87.50
Radiant Rose 7.25" Plate (6)	all for	\$50.00
Rosepoint 3500 8" Plate (8)	each	\$18.00
Rosepoint 3900 8" Plate (14)	each	\$18.00
Rosepoint 3900/14 Sugar		\$25.00
Rosepoint 3900/40 Creamer		\$20.00
Rosepoint 3500/15 individual Cream & Sugar		\$40.00
Rosepoint 3500/15 individual Sugar		\$22.00
Rosepoint 3500 Cream & Sugar		\$45.00
Rosepoint 3500 Sugar (2)	each	\$20.00
Wildflower 7.5" Plate (7)	each	\$18.00
Wildflower 8" Plate (10)	each	\$20.00
Original Cambridge individual, illustrated price sheets:		
Bexley, Bijou, Caprice, Corinth, Harvest, Laurel Wreath, Lynbrook, Magnolia		
---mix & match a minimum of 5	each	\$0.25
Original 1950's Cambridge Catalog		
Pages for a 3-ring binder		\$60.00
Original Cambridge Price List book, 1958		\$25.00
Original Cambridge Price List book, 3/15/56		\$25.00

**Davie Lou Solka** 361-852-5815  
501 Bermuda Place fax 361-852-5211  
Corpus Christi, TX 78411 PLUS S&H

## Wanted:

No. 3500 Gadroon R.C. Cambridge Adonis in 2-1/2 oz. and 10 oz. Footed Tumblers. Also, 7 oz. Low Sherbets, and 8-inch Salad Plates. Lynda Millman  
[sjmillman@sbcglobal.net](mailto:sjmillman@sbcglobal.net) or 925-736-6611.

## DEALER DIRECTORY

### ALADDIN LAMP BOOKS

Free History of Aladdin Lamps  
Figurine Lamps Wanted  
Bill & Treva Courter

3935 Kelley Rd. Kevil, KY 42053  
Phone 270-488-2116 FAX 270-488-2055

### THE DEGENHART PAPERWEIGHT AND GLASS MUSEUM, INC.

P.O. Box 186  
Cambridge, OH 43725-0186

Intersection of US 22 & I-77  
Phone 740-432-2626

### GREEN ACRES FARM

2678 Hazelton Etna Rd.  
Pataskala, OH 43062  
(State Route 310 North)

Sat & Sun 1-7 pm 740-927-1882  
Antiques, Crystal Glass & Collectibles

### THE GLASS URN

456 West Main Street, suite G  
Mesa, AZ 85201 480-833-2702  
480-838-5936

Mail Order Shows Open Shop

CAMBRIDGE, FOSTORIA, HEISEY, etc.

### Mac Miller

Fostoria • Cambridge • Carnival  
Depression Glass • Books • Fiesta  
and more

THE MARKET PLACE

(713) 467-0450 • BUS 10910 OLD KATY RD.  
(713) 461-1708 • RES HOUSTON TX 77043

### Glass Menagerie Antiques

Your Website for quality Glass from  
the 20's, 30's, 40's & 50's.

[www.glasstreasurechest.com](http://www.glasstreasurechest.com)

### Fostoria Glass Society of America

Traveling Ambassadors  
Ralph & Joyce Rider

For info: 817-545-5856

E-mail: [r.rider@sbcglobal.net](mailto:r.rider@sbcglobal.net)

John **Burlingame** Betty

Visit our booth (B-6) in

**DELILAH'S**

301 1st Street Sanford, FL 32771  
Antiques, glass, pottery, collectibles, etc.  
cell 386-212-7121 tel 407-330-2272

### Remember...

When writing to these dealers,  
please include a self-addressed,  
stamped envelope.

# DEALER DIRECTORY

When writing to these dealers, please enclose SASE

**DAUGHERTY'S ANTIQUES**  
Jerry and Shirley  
Antiques and Collectibles • Mostly Glass  
  
www.daugherty-antiques.com  
e-mail: sdaugh2515@daugherty-antiques.com  
  
Shows & Mail Orders 2516 Cheshire North  
(402) 423-7426 evenings Lincoln NE 68512

**Milbra's Crystal** Buy & Sell  
Replacement and Matching Milbra Long (817) 645-6066  
Emily Seate (817) 294-9837  
PO Box 784 Cleburne TX 76033  
Specializing in Cambridge, Fostoria, Heisey and others  
  
E-mail: longseat@sbcglobal.net  
www.fostoriacrystal.com

**BARNESVILLE ANTIQUE MALL**  
open 7 days, 8 - 5  
**Roger, Nancy and Brian Mayhugh**  
Owners  
202 N. Chestnut St. 740-425-2435  
Barnesville, Ohio 43713 3 floors  
EXIT 202 OFF I-70 • always buying & selling antiques

**THE TEAM**  
**ESTATE SALES**  
Liquidations • Appraisals  
Consignments • Senior Services  
Estate sales with some style and a bit of flair  
**ED TUTEN** 7007 McVay Place  
901-758-2659 Memphis, TN 38119  
www.teamestatesales.com

**THE GLASS CUPBOARD**  
P.O. Box 652  
West End, North Carolina 27376  
  
Marcia Ellis Cambridge Show  
910-673-2884 and Mail Order

**FINDER'S ANTIQUE HOUSE**  
3769 Highway 29 North  
Danville, VA 24540  
  
(434) 836-6782  
Cambridge • Heisey • Duncan • Fostoria  
Open Wed - Sat 11:00 to 5:00 (seasonal hours apply)  
Monday thru Saturday 10 - 5:30 Sunday 12 - 5:50

**Bogart's Antiques**  
BUY • SELL • APPRAISE • REFRESH  
CANE & REED CHAIRS • CLOCK REPAIR  
  
Jack & Sharon Bogart State Route 40  
740-872-3514 shop 7527 East Pike  
740-826-7439 home Norwich, OH 43767

**BAKER FAMILY MUSEUM**  
805 CUMBERLAND ST.  
CALDWELL, OHIO 43724  
  
740-732-6410  
Mon & Thurs 9-4; Fri - Sat 9-5  
Call for Sunday Hours

**CRYSTALLINE COLORS**  
Buy, Sell and Appreciate  
Cambridge and other Elegant Glass  
  
I Love Cambridge  
  
Lynne R. Franks 216-661-7382  
Ohio Antique Malls

**CRYSTAL LADY**  
Thurs - Sat 11-5  
1817 Vinton St. Omaha, NE 68108  
**Bill, Joann and Marcie Hagerty**  
Shop 402-341-0643 Home 402-391-6730  
Specializing in Elegant Glass & Collectibles  
www.crystalladyantiques.com

**Storck's Antiques**  
**Rick & Joyce**  
Antiques & Collectibles • Glass & Pottery  
Specializing in Fenton, Imperial & Cambridge  
Shows & Mail Orders • Storck1@aol.com  
Greenfield, MN 55373 • (763) 477-6415

**Mother Drucker's**  
*Fanny Drucker*  
Specializing in Elegant Glassware  
Shows and Mail Order  
P.O. Box 50261 Phone: 949-551-5529  
Irvine, CA 92619 888-MDRUCKER  
Website: http://motherdruckers.com


**Deborah Maggard, Antiques**  
Specializing in Cambridge Glass,  
American Hand-Made Glass & Victorian Art Glass  
  
We buy one piece or entire collections.  
Please contact me at 440-247-5632  
or e-mail at debmaggard@adelphia.net  
P.O. Box 211 • Chagrin Falls, OH 44022

**GLASS FROM THE PAST**  
Maureen Gillis  
  
www.cyberattic.com/~glassfrompast/  
email: tomopartners@snet.net  
tel: 860-526-3413

**JUDY'S ANTIQUES**  
Judy Bennett  
422 S. Ninth Street (corner of Jefferson)  
Cambridge, Ohio 43725  
  
Business (740) 432-5855  
Residence (740) 432-3045  
**CAMBRIDGE GLASS MY SPECIALTY**

**BRIDGES THRU TIME**  
Antiques & Elegant Glassware & Collectibles  
Member of Greater Houston BBB  
Located at Olde Carriage Shoppe  
810 2nd Street • Rosenberg, TX 77471  
For Web-Storefront and Auctions  
Website: http://www.bridgesthruetime.com  
E-mail: imwolf@houston.rr.com

**THE JONES GROUP**  
Cindy Jones  
Buy and Sell Cambridge Glass  
  
650 Riverside Drive  
Sleepy Hollow, NY 10591  
  
914-631-1656 or E-mail Caprice0@aol.com

  
**Mary Jane's Antiques**  
Early American Pattern Glass  
Depression Era Items  
2653 Burgener Drive 217-422-5453  
Decatur, IL 62521 mjthumes@aol.com

**THE GLASS HOUSE ANTIQUE MALL**  
Furniture, Pottery, Glass  
Antiques and Collectibles  
I-70 Exit 146, East on SR 40  
  
8825 E. Pike  
Norwich OH 43767 TEL 740-872-3799

**GATEWAY ANTIQUE MALL, INC.**  
JUST NW OF MINNEAPOLIS-ST. PAUL, MN  
Next to Super 8 in Rogers, MN  
(I-94/101 intersection)  
  
7 days; 10am - 6pm • 763-428-8286  
ELAINE STORCK, OWNER/DIRECTOR

**ISAACS ANTIQUES**  
(740) 826-4015  
  
See our booths in Penny Court Mall in Cambridge  
and at White Pillars Antique Mall  
(Route 40, one mile west of  
I-70 Norwich, OH • Exit #164)

**PENNY COURT MALL**  
637 Wheeling Avenue  
Cambridge, Ohio  
100 Booths 15,000 sq ft  
  
HOURS: Daily 10-6 Sunday Noon-5  
Closed Easter, Thanksgiving, Christmas  
Call for other holiday hours 740-432-4369

**MARGARET LANE ANTIQUES**  
2 E. Main St. New Concord, OH 43762  
Lynn Welker (740) 826-7414  
  
Cambridge Glass Matching Service  
Hours: Mon-Fri 10-12 AM, 1-5 PM  
or by appointment

  
**Our House Antiques**  
Linda & David Adams  
Las Vegas, NV  
702-838-1341 or  
800-357-7169  
Web: www.OurHouseAntiques.com  
E-mail: David@OurHouseAntiques.com

# Coming Next Month... The 2005 Auction Listings!!!

## Half Way to Convention Let Me Entertain You!

Are you ready? Do you have your 2005 calendar yet? Time to mark down the dates - Wednesday, June 22 through Saturday, June 25. Our theme for Convention 2005 will be...

### Let Me Entertain You!

Prepare to be entertained. We already have several programs in the works and we're always interested in having more, more, more. If you've got an idea for a display or program, please get in touch with me via email (slunicorn@aol.com) or by telephone (434) 296-2531.

Merry Christmas and Happy New Year to you all!!  
--Shelley Cole, Convention Chair



E-mail Address Changes to:  
lin26@hocking.net

Or by Mail to:  
Linda Adkins, Membership  
NCC  
PO Box 416  
Cambridge, OH 43725

**NATIONAL CAMBRIDGE COLLECTORS, INC.**  
**P.O. BOX 416**  
**CAMBRIDGE OH 43725-0416**

Website: [www.cambridgeglass.org](http://www.cambridgeglass.org)  
E-mail: [NCCcrystalball@aol.com](mailto:NCCcrystalball@aol.com)  
(not for change of address, please)

FIRST CLASS MAIL  
US POSTAGE  
PAID  
PERMIT No. 3  
CUMBERLAND OH 43732

**FIRST CLASS MAIL**

*Membership Renewal Notice:  
If the date above your name  
is 12-04, this is your last issue,  
and your NCC Membership has expired.  
Please renew today.*