



Cambridge Crystal Ball

Published monthly (except July) by National Cambridge Collectors, Inc. to encourage and report the discovery of the elegant and boundless product of the Cambridge Glass Company of Cambridge, Ohio

Issue No. 406

April 2007

Happy Bidders Make This Year's Auction a Success

by Lorraine Weinman

On Saturday, March 3, NCC members and other glass enthusiasts gathered in Cambridge, Ohio, for the National Cambridge Collectors, Inc. Benefit Auction. Squeek and Dorothy Rieker, Lynn Welker, and those who assisted them, brought about another successful auction. Once again the auction team was led by Craig Connelly of Granville, Ohio, who through his unique approach keeps the auction moving at a lively pace and keeps everyone's attention focused on the glass and on bidding. Almost 400 lots of Cambridge glass were sold to many happy bidders. There was something for everyone ... and at all price ranges. There were affordable bargains to be found as well as items that encouraged competitive bidding that brought over \$1000.

Prior to the auction, The Cambridge Cordials study group sponsored a 50/50 raffle drawing as a fundraiser for the club. Jack and Elaine Thompson chaired this event. Bev Acord and Millie Loucks were the lucky winners who had some extra cash to spend at the auction that day.

Some of the most notable sales included an Ivory with Brown Enamel Owl Lamp with an Ebony Base which finished at \$1050; an Experimental Amber/Black Bowl, \$700; a 10" Pomona Vase, \$950; the #522 Bluebell Two-Bun



Geisha Figurine, \$875; a #3011/1 Gold Krystal Statuesque Nude Banquet Goblet, \$550; a #1304 Carmen Urn and Cover with Crystal Keyhole Stem and Foot, \$750; a #3011/2 Heatherbloom Statuesque Nude Table Goblet, \$450; a #278 Crystal Vase, etched Windsor Castle, \$775; a Crystal Swan Punch Bowl and Punch Mugs, \$675; a #646 Ebony Keyhole Candlestick, etched Chantilly, \$775; and a #789 Peach-blo Footed Aquarium, Gyro Optic, etched Martha, \$300.

Photos of a lot of the auction glass can still be viewed on the website at www.cambridgeglass.org. You will also want to check the auction list again and see what prices were realized. (See page 15 for auction results.) As usual, the auction was also successful to absentee bidders. There were a number of items won by bidders who were not able to be present and had placed bids prior to the auction.

If you were unable to attend the auction, the Annual Convention and Glass Show and Sale are just around the corner. This is another great opportunity to see a wide variety of Cambridge Glass and have the chance to purchase some beautiful Cambridge pieces. Mark your calendars now and plan to attend. Both events are located at the Pritchard Laughlin Civic Center in Cambridge, Ohio, June 29 and 30. Hope to see you then!

More photos from the auction on page 18

N.D.G.A. Librarian Needs Our Help - see page 14

**2007 CONVENTION: June 27 thru July 1
Advance Registration Form Page 8**



President's Message

Progress While Facing Adversity

This March's Board Meeting and Quarterly Meeting were tempered by news of the illness of Linda Adkins. She was diagnosed with an aneurysm behind her eye which then ruptured during surgery. She was gravely ill, but recent signs show that she is in much better shape and progressing toward recovery.

For those who don't know Linda, she handles many vital club functions from membership chair – handling all renewals and our database, running labels each month for the Crystal Ball and all book shipments that emanate out of the museum. Needless to say, we faced major disruptions.

Our thanks to her whole family for her loving care and to her sister and fellow NCC member, Nancy Misel, for helping on many fronts from clearing email to working with Tarzan Deel to extract the membership list from Linda's computer. We are very happy to announce that Tarzan, a past NCC President, has agreed to handle all database administration needs.

Many others stepped up to help us make progress the best we could. My thanks to ALL of them and to you for your understanding. We know your Crystal Ball was a little late this month and now you know why.

Our most important priority is to wish Linda our very best and to hope for a full and rapid recovery.

This March's meeting brought a lot of exciting news and progress for NCC on many fronts. Our Treasurer Mike Strebler delivered to our Board our first ever Annual Report. It was universally praised by the Board and a version will be available to the members at our annual June Convention. We'll also look to load it on our members-only section of our website.

Speaking of our website, every new Crystal Ball will be loaded in the members-only section thanks to the collaborative effort of Editor, Helen Klemko and our Webmaster, David Adams. With this, we conclude our successful test of an e-Crystal Ball and will now be placing it on the Web. Many members had issues downloading the size file the e-CB represented. These problems should go away now.

We also have some exciting changes with the Crystal Ball to announce. We are relocating printing from Cambridge, OH to near Helen in South Carolina. Her area printer has wonderful quality and the Board noticed a marked difference in a test she did with the March issue. Pictures, a sore spot for us for some time, looked much better in this other printer's efforts. We want that to continue! We see a real value in having our Editor have local and frequent interaction with her printer. Plus, this supplier's costs came in cheaper. We thank Mark Parrish for his years of service to NCC as our printer.

We are reinvesting those savings into color! The Board approved publishing two of our eleven issues in full color – one will be the Auction preview and the other the August Convention review. This is an exciting development. It is more expensive, but we have the budget to afford it. Plus, reinvesting our recent success into more member benefit is good!

Mike Strebler, again, prepared a rough draft of a 2007 budget. That is being reviewed this month by the Board and will be approved by April 1. Not only can we meet the extra CB costs but we believe we can make a major step forward in debt reduction ...

... eliminating our whole mortgage by Sept. 30!!! Once we make our mandatory annual payments, we'll only have a balance of about \$17,000. We think we can wipe that out through your continued gifts, our Symphony Model membership plan and using our existing cash position. What an accomplishment!

In about five years, we'll have wiped out our whole mortgage obligation. I'm buying the first round at the November meeting! Which, by the way, will now be held at the Cambridge Country Club thanks to David Ray's efforts.

Now is the time for you to make plans to attend this June's Annual Convention. You'll love Shelley Cole's garden program this year plus we have SOOOO much to celebrate. Make your room reservations now. If you want to stay at the Comfort Inn, we've blocked forty rooms. When you call, just tell them you're with the Cambridge Glass group.

Please come this June! You won't regret it and hopefully we can all toast Linda on her full recovery and thank her for all she does!

Rick

DECALWARE

By Vicki Wollenhaupt

If you enjoy a good mystery Decalware should appeal to you. A piece of decalware is like the subtle clue sitting in plain view. The shape is obviously Cambridge but it is presented with a treatment and decoration that is unobtrusive.

Decalware is a descriptive name that has been given to this decoration by collectors. To date company information does not exist. This is believed to be a Cambridge Company decoration. The pieces are satin finished over the entire surface. There are two types of satin finish, a very smooth finish and a more sandy type. The smooth "satin" finish was achieved by treating the piece with a hydrofluoric/sulfuric acid bath. The "sandy" type was achieved by sand blasting. Why were two different methods used? We do not know for sure. Logical speculation would be that sand blasting won out over the acid method. It would be cost effective plus less hazardous.

A set of floral decals are placed on each piece. The size of the piece dictates how many decals you may find. A flat piece has three or four segments of the decal while a small piece may have only one flower. One disadvantage to having a decal is that heavy use tends to show a good amount of wear to the decal. A full segment of the floral decal is just about 4 inches wide and 3 inches long. In describing the floral decal it helps to have a little gardening experience. The three largest flowers appear to be poppies. The largest poppy is orange and in full open bloom. The poppy bloom next to that is lighter in color and in mid bloom. The third poppy is smaller and placed below and to the left of the poppy in mid bloom. There are sprays of tiny blue flowers at the sides of the poppies. These have the appearance of forget-me-nots. The green leaves have the shape of the leaves found on the stems of poppies. There are very tiny leaves that are floating and appear to be very dark gray or black. These tiny leaves provide contrast. Even if a piece is very small and only has enough surface for a single flower it will be one of the poppies. A good source for reviewing the oriental poppy would be most garden websites or a seed catalogue.

To date a few colored pieces have surfaced. This appears not to have been popular, probably because it is much more difficult to see the decal on a colored satin finished piece. The colored pieces were in light transparent pink, green and amber. The pieces have been bowls and a handled sandwich tray.

Decalware dates from probably 1926 thru 1930 or 1931. The vast majority of the known pieces can be found in the 1927 – 1929 catalogue. Stemware has not surfaced but several varieties of flat tumblers have been found.

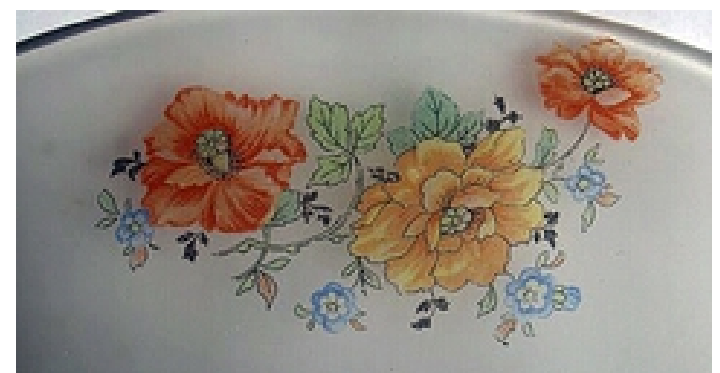
The following are some of the more interesting pieces. All of these shapes can be found in the Smith 1927-29 catalogue reprint.

- | | |
|------------------------|---------------------------------|
| #427 – 6 ½" relish | #623 – 5 pc highball |
| #389 – 13" 2 pc relish | #387 – 2 ½" ashtray |
| #95 – 1 lb candy jar | #507 – 2 pc temple jar |
| #105 – 62 oz pitcher | #814 – pitcher (cream or syrup) |
| #39 – ice tub | |

On a personal note, a tip of the hat goes to Ed Ruby. This gentleman was one of the founding members of the Club and one of the original Board of Directors. Mr. Ruby was collecting decalware 35 years ago and my interest was sparked by his collection.

Please share any of your interesting decalware finds with your fellow collectors.

***Please note that all of the photos of the decal have been photographed from the underside of the object. This allows the viewer to see more detail of the actual "decal".**





It's time to take your first (or second if you've already made your hotel reservation) big step towards attending the 34th Annual Convention and the best Elegant Glass show in the country. The Registration Form is on page 8 of this issue and must be returned before June 1st. I know that sounds like it's a long way off, but it will be here before you know it so pull it out now and get it in the mail. Convention events are starting to shape up nicely and there will be more details in coming issues. Suffice it to say, that we'll have all your favorite events – the pool side picnic, Bring & Brag and Glass ID, programs and lots of glass to gaze at and buy. We'll also have some of the newer events from last year like the Dash Through the Past program at the Museum and the Art Show and Contest with some of the school children in the Cambridge area.

Here are a few of the details you need to help you fill out the Registration Form. Be sure to send it separately from your election ballot (which will be in the May Crystal Ball). Ballots aren't opened until after convention starts so if your registration is with the ballot, we won't know you're coming and there probably won't be enough food for you.

On Thursday morning, we'll have an opportunity to car pool to Newark, Ohio to visit the Heisey Museum. I spoke with Walter Ludwig the Curator of the Museum a few days ago and they are thrilled that we will be sending a group to visit their beautiful Museum. We have a number of Cambridge/Heisey collectors in NCC so it will be exciting to see a Museum full of this beautiful glass. If you'd like to take the field trip, please indicate so at the bottom of the Registration Form. We'll gather at the NCC Museum at 8:45 on Thursday morning and car pool over. Not only is it a great opportunity to see spectacular glass, this can be a great way to make some new friends.

Thursday afternoon there will be an Orientation Session for our First Time Conventioneers. At that time, First Timers will be given some tips on how to get the most of their weekend in Cambridge and will be introduced to Mentors. These are members who make themselves especially available to answer questions, be a guide and become a friend. And don't feel like you have to be a First Timer or Mentor to attend this meeting – all are welcome. The more the merrier.

On Friday morning, we'll start handing out numbers for lining up for the Show and Sale at or before 8:00 a.m. The Show will open around 2:00 in the afternoon, but there will be plenty to keep you busy until then. At 10:00 members of Study Groups or those interested in starting one will meet. At 11:00 you'll be able to take a Dash Through the Past at the Museum. Our top-notch Museum Staff has put together another program to entertain and teach. The reviews last year were rave, so don't miss it this year. After that, a quick lunch at Theo's and then back to the Civic Center for the Glass Show and Sale.

In the evening, we'll share a lovely meal and then get down to business with a Mini Auction. This is a tremendous fund raiser for the Organization. Please consider bringing a good quality/good condition piece to donate to the mini auction. Bidding gets wild and very competitive, so watch your back. After we've all added a few more treasures to our collections, we'll settle down for our Annual Meeting.

If you think this sounds like a long day, it is. But remember – It's Convention, you're supposed to be tired. And as a little taste of what's to come on Saturday – the Glass Dash opens at 7:00 a.m. with more fabulous glass to devour with your eyes and take home.

That should be enough to get you intrigued and ready to go. More details will follow in the May issue. If you have specific questions about events or planning, feel free to call me at 434 296-2531 or send an email to slunicorn@aol.com. I'd be happy to answer your questions. —Shelley Cole, Convention Chair

Convention Registration

“Cambridge in the Garden”

National Cambridge Collectors, Inc.

34th Annual Convention

June 27 – June 30, 2007

Cambridge, Ohio

Advance Registration Form

Please complete the form on the back of this page and return it no later than June 1, 2007. (Registrations post marked after June 1 will incur a late charge. See below for cancellation policy.)

Send your check payable to National Cambridge Collectors, Inc. along with this completed registration form to:

National Cambridge Collectors, Inc.
Convention Registration
P.O. Box 416
Cambridge, OH 43725-0416

Do not enclose this registration with your election ballot. Ballots are opened during convention so your registration will not be processed before convention starts. That means we don't know you're coming until you get there.

Each person registering for the convention must pay the registration fee of \$20.00 regardless of which events will be attended. The registration fee includes admission to the NCC Glass Show and Sale and all other scheduled events as well as a Convention Booklet and Souvenir. Please register for all events you plan to attend, including those offered at no charge. For children under ten years old there is no registration fee. However, they will not receive the Convention Booklet or Souvenir.

Picnic: Due to the rising costs associated with convention, there will be a \$5.00 per person charge for the picnic.

Show dealers: *If you are a member of NCC, Inc. and wish to participate in other convention activities, registration is \$15 (regular registration fee less show admission charge). The benefits are the same. Late fees apply.*

Please list each person registering separately. Names should be given as you wish them to appear on your name badge. Please provide your NCC, Inc. membership number. If registering for more than 4, please list additional members on a separate sheet.

If you would like to receive an email confirmation of receipt of this registration form, please give us your email address. **This is the only way we can provide confirmation of your registration.**

Cancellation Policy

Written Cancellation up to 30 days before first convention event – full refund.

Written Cancellation up to 15 days before first convention event - full refund less \$10 handling fee.

Written Cancellation up to five days before first convention event – refund meals only.

Written Cancellation less than 5 days before first convention event – no refund.

**“Cambridge in the Garden”
National Cambridge Collectors, Inc.
Advance Registration Form
June 1 Deadline**

Name of Conventioneers (please print legibly as you wish it to appear on your Name Badge)	Membership #	1 st Convention? (circle one)	Friday Banquet Choice (circle one if you plan to attend the Banquet)
_____	_____	Yes No	Pork* Chicken*
_____	_____	Yes No	Pork Chicken
_____	_____	Yes No	Pork Chicken
_____	_____	Yes No	Pork Chicken

Email address _____ Phone Number (____) _____
(for registration confirmation)

ACTIVITY	FEE	NUMBER ATTENDING	Total
Registration (postmarked by June 1)	\$20.00	_____	\$ _____
Late Registration (postmarked after June 1)	\$30.00	_____	\$ _____
Dealer Registration (\$25 if registering after June 1)	\$15.00	_____	\$ _____
Wednesday Picnic	\$ 5.00	_____	\$ _____
Friday Evening Banquet	\$25.00	_____	\$ _____
Saturday Tropical Delight Dinner	\$18.00	_____	\$ _____
Optional Donation to NCC for _____ (i.e. museum acquisitions, endowment, etc.)			\$ _____
		Total	\$ _____

*Pork Chop stuffed with mushroom duxelle, lightly breaded and sautéed and topped with bordelaise sauce.

*Chicken Cordon Bleu

If you have special dietary needs, please let us know and we will do our best to accommodate you.



For Information and Planning Purposes Only

Please indicate how many will attend the following event:

Car Pool to Heisey Museum, 8:45 a.m. Thursday _____

Major Field(s) of Cambridge Collecting _____
(This information will appear in the Convention Packet.)

**The Convention Registration Form is available on the NCC Website - www.CambridgeGlass.org.
Print a copy of the form, complete and mail as soon as possible.**

American Glade Tour – Glass Pass Adventure Awaits

Whether you are a glass collector, a history buff or just looking for a unique road trip, then do we have the ticket or should I say pass, for you!

The Glass Pass is an exclusive ticket to a glass lover's pilgrimage all within a couple of hours driving radius of Cambridge. The new 2007 pass provides individuals with special discounted admission to 11 of the most historic and interesting glass attractions in West Virginia, Pennsylvania and Southeast Ohio.

Glass attractions participating in the pass include: The West Virginia Museum of American Glass, Ltd. in Weston, WV, The Fenton Art Glass Factory & Museum in Williamstown, WV; Baker Family Museum in Caldwell, OH ; The National Museum of Cambridge Glass in Cambridge, OH; Fostoria Glass Museum in Moundsville, WV; National Imperial Glass Museum in Bellaire, OH ;The Duncan & Miller Glass Museum in Washington, PA; The National Heisey Glass Museum in Newark, OH; The Ohio Glass Museum in Lancaster, OH; The Tiffin Glass Museum & Glass Shoppe in Tiffin, OH, and Crystal Traditions in Tiffin, OH.

The glass pass serves as a unique passport guiding people through amazing collections of American glass artistry and heritage in three states. Visitors get a stamp at each glass location when they present the pass for an admission discount.

The great thing about the pass is that it never expires and allows people to truly enjoy all the locations at their own pace. All 11 glass attractions can be experienced in one weekend or over the course of several weekends...even months.

The Glass Pass program was created in 2002 to celebrate the glass industry in Ohio. What began with only two counties, Guernsey and Licking (Ohio), who realized their commonalties and the importance of regional marketing, has grown in 2007 to 11 glass attractions and museums representing three states.

The impact our program can have on our marketing efforts will be two-fold for the visitors to the tri-state area: they will

discover the breadth and depth of the glass industry within the region and will also have the opportunity to experience countless other attractions, outdoor recreation and history the area has to offer.

This is a great, close-to-home, road trip that all ages can enjoy year-round. It's also a great activity to share with visiting friends or relatives.

For more information on the Glass Pass, contact the Cambridge/Guernsey County Visitors & Convention Bureau at 627 Wheeling Ave., Suite 200, Cambridge, OH 43725 or by calling 432-2022, or logging on to www.visitguernseycounty.com.



Experience the beauty, history and artistry as you embark on this unique glass lovers' adventure!

Explore the museums, tour a working factory, enjoy an outlet store and gift shops throughout Ohio, West Virginia and Southwestern Pennsylvania.

Take the journey... Discover the heritage!

Cindy Arent provided the press release of the new Glass Pass which was received from Debbie Robinson, Director of the Cambridge/Guernsey County Visitors & Convention Bureau. Cindy is very excited about visiting the new Ohio Glass Museum in Lancaster, OH, in April and hopes that she will be able to bring back some new ideas.

Logo Patch



This attractive, embroidered Cambridge Logo Patch was produced by the Elegant Study Group to benefit NCC.

It measures 2" by 3.5" and can be ironed or sewn onto almost any fabric

\$5 each

Educational DVD's

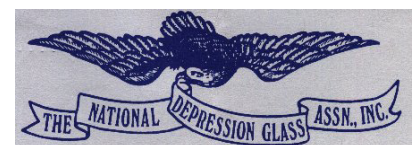
by the Miami Valley Study Group

♦ **Cambridge Glass & All that Jazz**
Presented at the 2004 NCC Convention; it covers Cambridge Glass patented, introduced or featured in the years 1925 thru 1930. Runs 25 minutes. **\$13.00**

♦ **Cambridge Glass: Ladies and All**
Presented at the 2006 NCC Convention, covers the years 1931 and 1932. Runs 38 minutes. **\$18.00**

♦ **Special: Both DVD's for one low price**
\$29.00

NDGA 2007



July 7-8
33rd Annual Convention Show & Sale
Modesto Centre Plaza
Modesto, CA 95354

www.NDGA.net
E-mail Ed: Convention@NDGA.net

NUDES

A most fabulous and desirable Carmen #40 flying nude lady bowl sold for \$510 on 2/25. It did have severe damage to the head.

A fabulous #3011/6 nude stemmed Roemer in Topaz with crystal stem and foot, sold for an equally fabulous \$609 on 2/28. Extremely beautiful.



On 2/25, a Royal Blue #3011/26 nude stemmed bud vase with crystal stem and foot did not meet reserve with a final hammer price of \$635. Wow.

A most beautiful and seldom-seen #3011/14 nude stemmed wine glass in Royal Blue with crystal stem and foot, sold on 2/28 for \$290. These wines are just not at all seen.

CAPRICE

A lovely Moonlight Blue Caprice #112 center handled twin salad dressing set sold on March 4th for \$360. It was fabulous as it had two Moonlight Blue ladles as well.

Stunning is the word for these candelabra that sold on March 4th. They were the crystal Caprice original version #69 candelabra. They are beautiful. This version has the seashell shaped bobeches that are attached. They sold for \$354.

On 2/25, a gorgeous LaRosa (pink) Caprice console set sold. It consisted of a pair of 3-light #1338 candleholders and a #65 oval console bowl. The set was marvelous. Such a commanding vision in pink. The set sold for \$175.

On 2/28, there were 3 different auctions each featuring one #24 Moonlight Blue Caprice dinner plate in each auction. They all ended the same day and each one sold for about \$86. Although stated to be in near mint condition, it was nearly impossible to tell as the picture was so bad you could hardly even see the Caprice pattern, let alone any imperfections.

On 3/3, there was a most gorgeously gorgeous #1358 crystal Alpine Caprice candelabra with a #1438 arm. No vases. The arm was entirely frosted to match the Alpinized areas of the Caprice pattern! Wow! This set was not listed under Cambridge yet managed to realize \$159. The Alpinization of the #1438 arm is the first I've seen done. Totally wonderful and totally ooh-la-la.

FLOWER FROGS

On 2/24, a simply marvelous two-kids flower frog in amber (as stated, but looked more like mocha) sold for \$128. A gorgeous flower frog, to be sure.

A most regal and elegant crystal rose lady flower frog sold on 2/23 for \$129. It had as stated minor water spotting in the holes.

An absolutely awesome pink draped lady flower frog did not meet reserve on 3/1 with a final hammer price of \$127. It was a most gorgeous shade of pink too. A true pink, with no orange overtones. Too bad.

A frosted pink, (Rose DuBarry) two-kids flower frog sold on March 4th for \$113. It looked extremely pale in the pictures, but I'm sure it was gorgeous in person. Wow.

SWANS

March 12th saw the completion of a beautiful crystal swan punch bowl and elusive base as well as 12 cups. It did not meet the reserve with the final hammer price of \$965.

A beautiful Gold Krystol 8½" swan that was marked with the famous triangle-C, sold on 3/10 for \$84. To me, it looked amber but some pictures are just so bad that the Red Cross won't even serve them coffee.

ROSEPOINT

An absolute mighty midget in Rose Point, the #3400/1341 shot glass, sold for \$145 on a buy-it-now format on 3/10. So gorgeous are these little creatures.



Stunning, is the only word I can use to truly describe this wonderful pair of candleholders that sold on March 4th. They are a pair of #3500/94 candleholders with the cornucopia center and on each diamond-shaped candle cup, there is a beautiful ram's head on each side. Wow! Truly a fabulously detailed candleholder. They sold for \$202. So elusive with any etching, but Rose Point, tres faboir.

March 4th was also the sale date of a set of 5 gorgeous #3105 pressed and etched Rose Point tall sherbets. This magnificent set sold for \$507.

And on March 4th, by the same seller, a pair of #3105 pressed and etched Rose Point cocktails sold for \$311. Wow!

OTHER ETCHES

On 3/5, a fabulous, fabulous vase sold. It was a #1519 vase in Smoke with the gold-

encrusted Vichy etching, known as the Moon etching when this vase was made, and sold for \$380. It's just too bad that the picture was so horrible. Would've loved to see that etching other than a splotch of gold on a dark vase. Is it just too much to ask for sellers to use a good picture? Maybe it's just me, I'm not sure. Wow!

A magnificent #1205 large jug in Light Emerald and with Apple Blossom etching sold on 3/14 on a buy-it-now format for \$275. Such a true beauty.

Truly, a jaw-droppingly gorgeous #1305 amber globe vase with crystal keyhole stem and foot and etched Gloria on the bowl of the vase did not meet reserve with a final hammer price of \$445 on 3/10.

The beauty of this #2973 Light Emerald salad dressing bottle with Marjorie etching made me fall to my knees and weep openly. This piece is also called an oil and vinegar bottle as it is also etched with those words. So unusual with Marjorie etching. It sold on 3/9 for a very nice \$167.

MISCELLANEOUS

February 21st saw the ending of an auction that received no bids. There was no reserve and an opening bid of \$350. The piece was a beautiful #1236 keyhole ivy ball vase in Crown Tuscan with the beautiful Charleton Roses decoration. Gorgeous.



A gorgeous piece of signed Near Cut sold on 3/10 for \$363. It had ruby stain in a circle pattern and heavy gold trim. It looked immaculate. It was stated to be a spooner, but seemed too short for that. Seemed too tall for a toothpick. Perhaps an open sugar. It was beautiful.



A sumptuously beautiful Bluebell one-bun Geisha figurine sold on 3/14 for \$639. So stunningly elegant and regal.

A seldom-seen 4-piece game set in original box and cover sold on 3/11 for \$203. So magnificent with the Carmen heart and diamond and Ebony spade and club. All that clear, plain glass in each tumbler. Let's find the game set with gold-encrusted Rose Point on each tumbler and gold trim on each rim and gold trim on the colored feet of each as well! Oh, tell me it's true, please just tell me!

Showcasing our Members

GROWING UP WITH GLASS



Don't Judge a Book By It's Cover

By Mary Beth Sills, formerly of Byesville
now Thornville, Ohio

Hello! I am Mary Beth Sills and this is my Cambridge glass story. I began my glass collecting addiction at an early age. My parents were both avid glass collectors and I would inherit pieces that were not quite right for their collection. Early on, I had an appreciation for the swan with a chipped beak my mother gave to me and the ashtray that was a gift from my father. I would stare into their glass cabinet for hours and dream of the day I would have a collection of my own. Before I knew it, I grew up, graduated high school and was packing my bags for college. I continued to collect glassware, even through my poor college years, but kept those hand-me-down pieces of my childhood close to my heart.

To take my mind from my studies I would often hunt the local antique stores searching for my ever growing list of collections. My favorite antique haunt was near campus and HUGE! Convenient enough, it was just off I-75 near Findlay, Ohio. I would sometimes drive from my dorm room on the Bowling Green State University Campus to the store and spend the entire day staring at vintage clothing, Christmas items and, of course, glassware. I picked up a few pieces for myself and my Grandmother. A large inverted thistle plate, square bowl and a perfume bottle are just a few of the pieces I took home with me. At the time, I wasn't particular about what I purchased, just as long as it was either marked, or I knew what it was. Or if the price was right! I never paid more than \$40 for anything!

Back home, my grandmother, Shirley Brown, convinced me to attend my first NCC auction about eleven years ago. Knowing I was proud of my family history, she would tell me the stories of relatives who worked in the factory, about the after hours pieces they brought home, boxes of glass that were removed (not by them!) and the process by which pieces were etched with acid. (That happened to be the department where my relative worked.) I felt a real connection with my past and wanted to learn more about the glassware and to begin collecting even more! As the day of the auction arrived I continued to be skeptical about what I could purchase, but went anyway to ogle the glass and to spend time with her. When I arrived, I felt like a kid in the candy store! (And still do!) I picked up several cordials, a pink sugar bowl and a Crown Tuscan covered candy dish decorated with Charleton Roses. I took my treasures home and soon had a prized collection. The glass bug had wormed its way out of that candy dish and bit me hard.

I was hooked and my love of Cambridge blossomed into mania. I would scour antique shops, online auctions and my grandma's china cabinet for new pieces to add to my collection. To feed my glass hunger, my grandmother gave me many of the items that were in my parent's collection. A #3500 Rose Point cordial, a service for 4 in pink Cleo, a vast array of swans, Crown Tuscan nude candle stick and more soon filled my cabinet to near capacity. One of my most prized inheritances, however, is a set of crystal candlesticks that once belonged to my maternal grandmother. They are the only item I have that belonged to her and are perhaps, my favorite piece in my collection.

Though I like it all, my passion is Crown Tuscan. There is something about that pink glass that sends my heart into palpitations! Over the years, my collection of Crown Tuscan has grown by leaps and bounds. For Christmas 2003, I received a Crown Tuscan Flying Lady Bowl from my grandmother, a gold encrusted swan and a sea shell ashtray from my father. My birthday brings Crown Tuscan as well. Two year ago, my father purchased a 5" Crown Tuscan sea shell comport decorated with the Charleton Harbor scene. It now has a place of honor in my cabinet. Over the years I have purchased a gold etched Portia Vase; with Crown Tuscan mark, a cigarette box decorated with Charleton Roses, a 5" Nude Crown Tuscan Sea Shell comport and a 5" gold encrusted Rose Point Vase in addition to the sea shell ash trays, swans and pencil dogs that already lined the shelves.

Now, you may be asking, what does all of this have to do with the title of this article? Well, did I forget to mention I am only 29 years old? I am not your typical young adult. I love history, Civil War reenacting, sewing and, of course, antiques. I have always loved old things and would rather spend a day in an antique store than surrounded by babbling teenagers in a shopping mall. My passion is a curse, however. Even though I am 29, successful, and bring money to spend, many store owners will often look at me with discontent and even follow me through their store! I must fit that young, female shoplifter profile! What is worse is when I ask for assistance, I am treated like a criminal waiting for the right moment to make my move.

Here is an example. I stopped at a shop one time and asked the owner if they had any #3500 Rose Point cordials. I explained that I had one, but would like to obtain a second to have a pair. I was told that there was a waiting list for that item and that no other names would be taken at the time. Dejected, I understood, and continued browsing the cases. Several minutes passed before I inquired if this particular dealer had ever had any Mardi Gras in their shop. Instead of answering my question, the reply was rather quip: "You will NEVER be able to afford any of that!" Very dejected now, I thanked the person for their time and IMMEDIATELY

continued on page 12

Showcasing our Members - Growing up with Glass

continued from page 11

left the store to never set foot in it again. I was angry, hurt and disgusted. How does this person know what I can and can not afford? For all they know I could be heir apparent to an oil fortune or strike it rich winning the lottery! What gave this person the right to judge this book by its cover!

These words have haunted me since I left the shop and I have since been on a mission to prove that person wrong. (Just as a note, I have been unsuccessful to this date ☺ with obtaining the Mardi Gras, but did pick up a #3500 Iced Tea etch Rose Point for \$7.00 to fill the cordial void.) When I set my mind to something I don't stop until I am successful. One day I will have that piece of Mardi Gras! Someday!

Now that I have jumped down from my soap box I want people to know one thing, age is just a number! Just because a collector is young, does not give you or anyone else the right to discredit them! Many times, we are the ones who spend countless hours scouring the libraries and museums for information. We are the ones who will study the pieces in our collection for hours and take notes! We are the ones who read EVERY book that has ever been written on the subject while writing notes in the margin. We are the ones who will visit the museum time and time again to see and re-see the display pieces. We are the ones who must gain the knowledge to pass on to future generations. All I ask is that you treat me and others in my shoes, like you would any other Cambridge collector, whether they are young or old, a veteran or a novice collector. I want to learn, collect and expand the knowledge of the company and the glassware just like the rest of you! And who knows, perhaps I may know or own something that you don't! You were young once too! And remember, we should never judge a book by its cover.

Mary Beth Sills spends her time living in a 19th century cottage and working in Licking County, Ohio for the Licking Park District. She is currently the proud owner of over 250 pieces of Cambridge glass, but still no Mardi Gras! In her spare time she enjoys reading, reenacting, sewing, writing grants for the non-profit organizations she belongs to, collecting antiques, raising chickens, driving her team of oxen, playing with her five cats and spending time with her family. She has been a member of the NCC for eleven years, but can trace her family roots in glassware back to the Byesville and Cambridge factories.



2007 NCC CONVENTION MOTEL INFORMATION

Wednesday, June 27 - Sunday, July 1, 2007

All of these motels are located in Cambridge at Exit 178, Ohio Route 209 off Interstate 70. Remember to mention that you are attending the National Cambridge Collectors Convention. Book before June 15 to ensure availability and best rates.

AMERIHOST CAMBRIDGE

State Route 209 South

740 439-1505

\$59 single or double includes extended continental breakfast

(Indoor pool, in-room amenities)

BEST WESTERN CAMBRIDGE

1945 Southgate Parkway

740 439-3581

Approximately 50 rooms available until 06/20/04

\$54.95 single or double includes continental breakfast

(Outdoor pool, in-room amenities)

****REVISED FROM LAST MONTH**

NEW LOWER RATE FROM

HAMPTON INN - JUST FOR NCC**

HAMPTON INN CAMBRIDGE

8775 Georgetown Rd

740 439-0600

\$80 per night

Rates include continental breakfast

(Indoor pool, business center, wireless internet)

HOLIDAY INN CAMBRIDGE

2248 Southgate Parkway

740 432-7313

\$65 night for 2 or more night stay

(Outdoor pool, in-room amenities)

COMFORT INN CAMBRIDGE

2327 Southgate Parkway

740 435-3200

\$70 single or double includes continental breakfast

Evening snacks in the lobby

(Indoor Pool, in-room amenities)

DAYS INN CAMBRIDGE

2328 Southgate Parkway

740 432-5691

\$45 single or double includes continental breakfast

(Outdoor pool, in-room amenities)



❖❖❖ **Make plans to visit your Museum in the near future and see the spectacular displays in the three feature rooms** ❖❖❖



Diane and Ernie Gary in the Museum Sample Room which displays the gorgeous Chantilly collection loaned by Diane for the 2007 display.



Lindy Thaxton in the Museum Dining Room which displays her Amethyst collection on loan to the Museum for the 2007 season. The other two photos showcase more of the beautiful Amethyst display.



Linda Bredengerd and Sarah Van Dalsam with the N.D.G.A. display residing in the Feature Display Room at the Museum. Complete article appeared in the March 2007 issue of the Crystal Ball.



Calendar of Events

If you know about any upcoming glass shows or other glass events, please pass the word on to us at least six to eight weeks before the show dates. These listings are free of charge.

NCC Events **2007 Convention** June 27-30, 2007 **August Quarterly Meeting** Saturday, August 25 (tentative)

Upcoming Glass Shows

April 20-21:

North Jersey Depression Glass Show
Allendale, NJ
Call: Paul (973) 267-7511 or
Walter (973) 838-2419

April 28-29:

Rocky Mtn. DG Society Show
Castle Rock, CO
Call: (303) 772-5446

June 9-10:

Belleville Depression Glass Show & Sale
Belle-Clair County Fair Grounds
Belleville, Ill
Call: (618) 259-5059
E-mail: tuckant@charter.net

August 4-5:

Chicagoland DG Show & Sale
Wheaton, Ill
Call: (618) 259-5059
E-mail: tuckant@charter.net

August 18-19:

Houson Glass Club's Festival of Glass &
Antique Show & Sale
Rosenberg, TX
Call: (281) 342-4876 or (713) 729-4267
E-mail: rdalton3627@msn.com

August 24-26:

Milwaukee DG Show & Sale
Milwaukee, WI
Call: (262) 376-9874

August 25-26:

Metroplex DG Show & Sale
Grapevine, TX
Call: (817) 875-6292 or www.dfwglass.com

N.D.G.A. Librarian Needs Our Help

Hello, my name is Pam Meyer and I am the newly appointed Librarian of the newly formed National Depression Glass Association (N.D.G.A.) Library.

I felt like I must share my latest experience with you. My job is to inventory and number (by hand) each donated book, then make a label with all the information and affix it to the book. You can imagine my dismay when someone donated your Crystal Ball News Letters starting with the first issue!! I now had more steps to take in order to preserve them. I had to add acid free backing board and put each one in a sealable sleeve. A daunting task using many of my precious hours!!!

I got started and soon found myself randomly flipping through pages, then stopping to devour each article until I noticed my progress had slowed to a snail's pace. I received these Crystal Ball News Letters on November 20, 2006 and so far I am only up to Issue #265. I find that there is no hurry!! I don't want to miss anything!! I feel as though I know so many of the people who have made your organization so great and have learned so much about Cambridge. I even shed a tear or two when I read about one of your members passing away. I feel like I have lost a new friend. What better way to spend my "precious" free hours.

I just wanted to say "Thank You" for all the hard work that you and all the Cambridge members from the beginning through today have put into making your organization so successful. I know that when we finally get a home for our museum and our library becomes accessible to the N.D.G.A. members, your Crystal Ball News Letters will be a source of great knowledge beyond anyone's imagination.

Let me add, that your member, Mrs. Robert (Sue) Cameron from Fort Worth, TX, was the one who generously donated all of her issues through 2005 and recently gave me all of her 2006 issues as well. I am missing some issues and need the following to complete our set:

May 1981 - #97, June 1981 - #98, March 1982 - #107, November 1982 - #115, July 1985 - #147, September 1985 - #149, December 1991 - #224, September 2000 - #329, August 2004 - #376.

If any of your members would like to help me out and donate one of the missing issues, please contact me at: meyerantiques@juno.com or mail to me at: Pam Meyer, 4600 Meadow Ranch Circle, McKinney, TX 75071-7828.



2007 Auction Results

1A	95.00	51	65.00	102	175.00	153	40.00	204	50.00	255	65.00	306	135.00	357	75.00
1	6.00	52	35.00	103	35.00	154	85.00	205	70.00	256	40.00	307	105.00	358	40.00
2	5.00	53	85.00	104	30.00	155	25.00	206	60.00	257	125.00	308	75.00	359	55.00
3	20.00	54	25.00	105	30.00	156	40.00	207	30.00	258	35.00	309	65.00	360	17.50
4	27.50	55	30.00	106	80.00	157	55.00	208	165.00	259	65.00	310	145.00	361	105.00
5	15.00	56	30.00	107	40.00	158	55.00	209	25.00	260	90.00	311	45.00	362	20.00
6	42.50	57	65.00	108	145.00	159	40.00	210	25.00	261	40.00	312	850.00	363	30.00
7	32.50	58	17.50	109	75.00	160	110.00	211	25.00	262	675.00	313	125.00	364	200.00
8	5.00	59	25.00	110	140.00	161	30.00	212	35.00	263	65.00	314	60.00	365	65.00
9	55.00	60	15.00	111	75.00	162	30.00	213	75.00	264	100.00	315	750.00	366	100.00
10	25.00	61	45.00	112	22.50	163	50.00	214	30.00	265	20.00	316	75.00	367	875.00
11	105.00	62	25.00	113	30.00	164	15.00	215	125.00	266	325.00	317	165.00	368	250.00
12	20.00	63	65.00	114	80.00	165	40.00	216	55.00	267	45.00	318	380.00	369	100.00
13	15.00	64	100.00	115	35.00	166	35.00	217	100.00	268	170.00	319	155.00	370	65.00
14	30.00	65	40.00	116	150.00	167	45.00	218	65.00	269	40.00	320	35.00	371	100.00
15	25.00	66	20.00	117	250.00	168	45.00	219	80.00	270	60.00	321	50.00	372	100.00
16	35.00	67	57.50	118	110.00	169	75.00	220	60.00	271	65.00	322	35.00	373	85.00
17	45.00	68	30.00	119	250.00	170	60.00	221	300.00	272	75.00	323	40.00	374	950.00
18	40.00	69	45.00	120	65.00	171	100.00	222	75.00	273	50.00	324	55.00	375	65.00
19	50.00	70	15.00	121	60.00	172	65.00	223	85.00	274	25.00	325	325.00	376	250.00
20	24.00	71	110.00	122	35.00	173	105.00	224	225.00	275	55.00	326	110.00	377	100.00
21	60.00	72	160.00	123	45.00	174	190.00	225	50.00	276	80.00	327	45.00	378	40.00
22	65.00	73	65.00	124	20.00	175	25.00	226	30.00	277	160.00	328	125.00	379	45.00
23	45.00	74	55.00	125	36.00	176	75.00	227	45.00	278	60.00	329	55.00	380	40.00
24	55.00	75	35.00	126	65.00	177	85.00	228	30.00	279	60.00	330	150.00	381	60.00
25	12.50	76	100.00	127	5.00	178	95.00	229	90.00	280	40.00	331	450.00	382	20.00
26	30.00	77	75.00	128	40.00	179	80.00	230	285.00	281	15.00	332	60.00	383	100.00
27	52.50	78	200.00	129	50.00	180	55.00	231	1050.00	282	90.00	333	325.00	384	7.50
28	35.00	79	30.00	130	5.00	181	30.00	232	30.00	283	380.00	334	200.00	385	70.00
29	40.00	80	45.00	131	65.00	182	50.00	233	35.00	284	85.00	335	40.00	386	65.00
30	45.00	81	20.00	132	65.00	183	75.00	234	40.00	285	85.00	336	65.00	387	60.00
31	20.00	82	100.00	133	100.00	184	50.00	235	45.00	286	90.00	337	65.00	388	80.00
32	45.00	83	35.00	134	25.00	185	25.00	236	300.00	287	775.00	338	115.00	389	16.00
33	70.00	84	25.00	135	90.00	186	150.00	237	105.00	288	10.00	339	40.00	390	30.00
34	45.00	85	20.00	136	65.00	187	45.00	238	65.00	289	50.00	340	185.00	391	60.00
35	25.00	86	145.00	137	100.00	188	350.00	239	85.00	290	70.00	341	225.00	392	55.00
36	120.00	87	85.00	138	60.00	189	40.00	240	120.00	291	105.00	342	200.00	393	48.00
37	50.00	88	40.00	139	55.00	190	45.00	241	245.00	292	35.00	343	70.00	394	120.00
38	75.00	89	35.00	140	700.00	191	45.00	242	775.00	293	105.00	344	90.00	395	150.00
39	30.00	90	40.00	141	135.00	192	170.00	243	200.00	294	45.00	345	235.00	396	110.00
40	35.00	91	200.00	142	235.00	193	50.00	244	55.00	295	55.00	346	75.00	397	220.00
41	60.00	92	75.00	143	65.00	194	45.00	245	105.00	296	15.00	347	100.00	398	225.00
42	30.00	93	40.00	144	15.00	195	65.00	246	40.00	297	35.00	348	65.00		
43	775.00	94	20.00	145	85.00	196	40.00	247	65.00	298	380.00	349	30.00		
44	25.00	95	75.00	146	5.00	197	105.00	248	130.00	299	45.00	350	340.00		
45	50.00	96	225.00	147	65.00	198	20.00	249	110.00	300	210.00	351	225.00		
46	20.00	97	30.00	148	22.50	199	40.00	250	15.00	301	45.00	352	55.00		
47	50.00	98	10.00	149	45.00	200	65.00	251	35.00	302	80.00	353	550.00		
48	45.00	99	110.00	150	60.00	201	350.00	252	70.00	303	95.00	354	15.00		
49	110.00	100	110.00	151	12.50	202	55.00	253	85.00	304	205.00	355	150.00		
50	75.00	101	50.00	152	30.00	203	65.00	254	240.00	305	175.00	356	150.00		



Study Group Reports:

The NCC has several study groups; these are the groups currently active and holding regular meetings. Listed below is contact information for these study groups.

If there is no study group in your area and you are interested in starting or joining a new study group, please contact NCC Study Group Advisor, Judy Rhoads at kjrhoads@aol.com.

#13 - Miami Valley Study Group

Miami Valley area, Ohio
Larry Everett
db0098@dragonbbs.com
(937) 675-6491

#14 - The Cambridge Cordials

Cambridge, Ohio
Lorraine Weinman
blweinman@hotmail.com
(330) 966-9376

#15 - North Texas Cambridge Study Group

Dallas area, Texas
Scott Pierce
scottpierce1@msn.com
(817) 427-9510

#16 - Elegant Glass Collectors

PA & NJ
Bill Dufft
billnvon@aol.com

#17 - The Columbus Wildflowers

Columbus, Ohio
Barbara Wyrick
bwyr@ee.net
(614) 291-0361

#20 - South Florida Study Group

Miami, FL
Linda Gilbert
rosepointbabe@aol.com

#21 - Crazy 'bout Cambridge Study Group

Indiana
Beth Sarchet
bethsarchet@bluemarble.net

North Texas Cambridge Study Group #15 - December 3, 2006

The North Texas Cambridge collectors converged on Euless, Texas for a chance to celebrate the holidays with food, friends, and of course, good glass. Joyce and Ralph were gracious enough to host the joint holiday meeting of the North Texas Cambridge Collectors as well as the Fostoria Collectors of North Texas.

After informal chatting, it was time to have our pot-luck dinner. After everyone had all the food they needed, we got to business. After a short report about the October Waxahachie show, we got to the fun part of the gift exchange. The objective was to find something over the past year, worth more than \$20, but spend less than that. It turns out our members are very resourceful! With a diverse group of members, it turned out the packages under the tree included Cambridge items along with Fostoria, Heisey and Morgantown. A great time was had by everyone as we opened gifts, with a few swaps along the way.

Our next meeting will be January 28 at Freeman and Jeannie Moore's home. We will be researching Baskets – items with a handle from one side to the other.

Submitted by Freeman Moore

North Texas Cambridge Study Group #15 - January 28, 2007

The North Texas Cambridge collectors began the year in Flower Mound Texas to learn about baskets at the home of Freeman and Jeannie Moore. Of course, everyone had a chance to see the Cambridge glass visible throughout the house, including Jeannie's 3400/38 ball jug collection.

Freeman had prepared handouts using Crystal Ball articles from 1976 and 1987. The 1976 article by Phyllis Smith covered NearCut baskets. Our members only had a few examples of

NearCut baskets. Mark Nye did an extensive three part article in 1987 which provided a lot of detail for our discussion. We noted differences in handles (smooth and textured), decorations (plain or etched), color, sizes, and shapes of baskets. We found it interesting the little 3500/79 basket had a molded handle. We looked at all of Jeannie's Georgian baskets, trying to find differences between the 319/B/2 and 319/B/3 baskets (oblong versus crimped). Question: Are there other examples using this unusual line number scheme? We had two examples of the inverted strawberry nearcut basket (are they legit?). Finally, we had the chance to look at some Heisey baskets. We were impressed that all of the examples had the handle molded as part of the basket. We concluded by watching a video from Fenton that included a demonstration of making a handled glass basket.

Just before enjoying the snacks prepared by Jeannie, we had a chance to see a Caprice crystal alpine 5" fruit bowl and 5 oz. tumbler, #61 3 footed blue alpine bowl, Fenton caprice basket, and 3400/141 pitcher with Yukon etching. Our next meeting will be a lunchtime BBQ meeting at the Metroplex glass show in Grapevine, March 10. A couple of members will report back about the San Antonio show in February. Our April/May meeting will probably be a joint meeting with the north Texas Fostoria glass club.

Submitted by Freeman Moore

The Columbus Wildflowers Study Group #17 - March 8, 2007

On Thursday, March 8th, 2007, the Wildflowers met at the home of Barbara Wyrick at 7:00 pm. We relaxed with refreshments and conversation and then had the business portion of our meeting. We set our Schedule for the next few months, and on April 5th we will meet at David Ray's with a topic of "Shades of Green"; the May 3rd meeting was not

Study Group Reports (continued):

yet determined; and then we take the summer off and meet again on September 8th at the Lyle's for our "After Summer Cook-out." David gave us a club update, and we talked about the Crystal Ball (our group is going to provide some articles for the upcoming year) and the new Rose Point book.

The Wildflowers extend our heartfelt thoughts and sympathy to Jackie Nicol in the loss of her mother, and also to Ralph Warne in the loss of his mother.

Our program this time was "Silver Overlay," and since we have turned our research into an article for the Crystal Ball to share with the club in an upcoming issue, I won't go into as much detail as usual. But we discussed the history and methods of decorating glass with silver, and members brought many silver overlay items for identification and comparison. Information about Silver Overlay is hard to come by, so much of our research came from Lynn Welker's wonderful presentation at the November NCC meeting and from our own study group member Ken Nicol.

Since the Cambridge Glass Company had no silverplating facilities to apply the silver to the glass, their factory decorations were in Platinum or 22K white gold, which was painted into an etch and then fired, as we saw on an Azurite Cylinder Vase with "Classic" etch.

The various companies who did silver decorating on Cambridge included Rockwell Silver Co of Meriden, CT, who did very high quality. Some of their patterns included: Kobe Oriental branch design (we saw on a Helio Vase); Antelope (our only example was on an Ebony Pairpoint Vase); Silver Seahorse (on a Crown Tuscan Vase); and Flowered Triangle and Flying Geese (seen on Nude Clarets).

Silver City was one of the last decorators into the mid-1950's, and did the Caprice Anniversary pieces;

Satinized Poppies (seen on a Ball Jug); Lily of the Valley (on a Caprice Bowl); and a variety of Fruit (seen on a beautiful Caprice Bowl with a variety of Cherries, Strawberries, Raspberries and other fruit, all on one bowl; and a Satin Water Pitcher with Apple, Pear and Cherry); and many other Floral patterns.

Lotus from right here in Ohio did a very durable silver, and we saw their Call of the Wild (our example was on a Duncan Vase); Clover (seen on a Star Candlestick); and silver Hunt Scene (on various company's Decanters). Other companies were DePasse Pearsall who did a very high quality silver in "Circle of Swans" and "Swans and Cattails" seen on a Decanter and a Water Pitcher; and National Silver Deposit who most likely did the silver dogs on Ebony Ashtrays (we saw a Bulldog and a Scottie).

One of the most interesting things we noted was that the Rockwell "Antelope" and Lotus "Call of the Wild" were extremely similar patterns, but every petal and leaf of the Rockwell pattern had extra artist cuttings making individual petals stand out, whereas the Lotus was just full plain flowers, where no artist stylus had cut additional patterns into it.

Next, we had several pieces of silver overlay for identification. We decided that both a blue Decanter with silver grapes and a crystal Globe Vase with variety of fruit, flower and pinecones in silver were probably Silver City. We had a Crystal Daulton Jug with a cutting at the bottom and silver around the top, that may have been done at Hawkes, who is more well known for cuttings. We also had a very early 1900's blown 10 panel Optic Vase which had a needle etch with flux to attract the silver in a Dancing Nymph pattern, but the silver easily flaked and was not durable, and we could not determine who had done the silver. **Watch for more on Silver Overlay in an upcoming Crystal Ball.**

Our fun, informative meeting ended with Show and Tell which included: an Amethyst Tumbler with hand painted enamel flowers; a #531 Tall Comport with unusual wide gold band and interspersed etching; an Ebony Comport with Gold Encrusted Blossomtime; a #1023 Ebony Squared Vase with #741 etch; a large #3400 Vase with Lily of the Valley etching, and a #278 large Crystal Vase with Lily of the Valley etch.

Our meeting adjourned at 10:00 pm. We are always looking for new members in the Columbus, Ohio area and anyone interested in joining can contact either Linda Roberts at lrobert2@columbus.rr.com or Barbara Wyrick at bwyr@ee.net

—respectfully submitted by Barbara Wyrick, Secretary

IN MEMORIAM BETTY LOSCH

The Club was saddened to learn that long-time member Betty Losch passed away this past November. We learned this first from her husband Bill upon renewing his membership, and then from the California Fostoria Glass Club newsletter, of which Betty was an active and vibrant member. Betty was NCC Member #1221 and a devotee of Greentown glass and George Duncan and Sons as well as her love for Cambridge. She will be missed and our thoughts go out to Bill and other friends and family of Betty.



**Many thanks to the Club Members who helped during the Auction.
Some of the moments are captured below.**



Lynn Welker captivates the audience during "Show and Tell" prior to the Auction



Hidden From Sight for 75 Years

By Bill Courter

Henry Hellmers, Cambridge glasshouse superintendent 1930-32, liked blue glass. He developed Royal Blue (see Les Hansen, *The Cambridge Colors: Royal Blue, Crystal Ball, June 2003*) and he revised Willow Blue for heat resistant dinnerware in 1931.

While at Cambridge, Hellmers sent a 27 piece luncheon set of Willow Blue dishes to Karl and Marion Hellmers in Lookout, PA. They also liked blue, but Marion apparently was afraid of breaking the beautiful dishes and she never unpacked them. The box of dishes was later given to Mae Jensen, sister of Helen Hellmers Adams.

The dishes remain unused and stored in the same box today. Helen wonders "if the dishes will ever see the outside world?"

These photographs from Helen are a record of the Willow Blue dishes made at Cambridge when her Uncle Henry worked there.

Henry T. Hellmers' Batch Book of Glass Formulae, that I published and presented to the Cambridge Club in 2002, lists several formulas for Willow Blue. The first were Cambridge dinnerware formulas dated 1925 and 1928. Later formulas were dated 1931 and 1932 with heat resistant dinnerware in 1931.

Thanks to Helen Adams and Mae Jensen for unpacking the dishes for these pictures.

Photos below show a selection of the items in the luncheon set



Original box label

NCC Merchandise

Scotty Dog Bookends



\$112/pair
Cobalt Blue
includes shipping



Cat's Meow: NCC Museum



\$20



Vaseline Prism Sign

2005 Convention Favor



\$15 each

Salt & Pepper Tops

Polycarbonate plastic will fit most Cambridge shakers, such as Rosepoint footed and flat-bottom shakers. They also fit Heisey Rose, Saturn, Plantation, Crystalite and some Orchid. Fit some Anchor-Hocking and Candlewick.



\$6/pair

Order 20 pair (or more) and
pay only \$5 per pair.



NCC Logo Pin



\$5 each



Comemorative Tape Measure

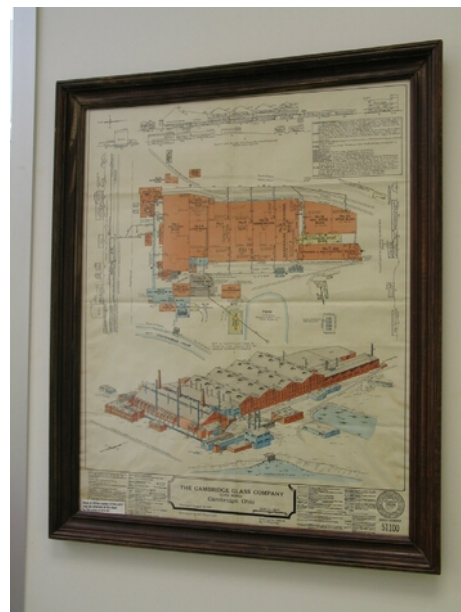
Issued for the Grand Opening of the
National Museum of Cambridge Glass



Special...\$1 each

Factory Map and Elevation

Reproduced from the original, which
hangs in the NCC Museum



\$12.50 each



"The Crystal Lady"

Copy of an original Cambridge Glass
promotional film; shows the
manufacture of a goblet.

VHS or DVD \$15



"Primrose"

Prism Sign

2006 Convention Favor

\$15



Book and Merchandise Sales thru the
NCC Website are back on-line. To order,
go to www.CambridgeGlass.org and
click on Members-Only.

Send orders to:

NCC • PO Box 416 • Cambridge, OH 43725

OHIO RESIDENTS PLEASE ADD 7% SALES TAX

Please include your name, complete mailing address
and your phone number or e-mail address. Payments
by check or Money Order only, payable to NCC.

How to Order

SHIPPING/HANDLING:

All items (including books) except Scottys:	
Total order up to \$6	\$1.50
\$6.01 to \$25.00	\$4.50
\$25.01 to \$50.00	\$5.50
\$50.01 to \$75.00	\$6.50
Over \$75.00	\$8.50

Books for Sale

*Published by NCC • Members receive a 10% discount • **CLICK ON BOOK TITLE TO ORDER THRU NCC WEBSITE***

TITLE		REGULAR PRICE	MEMBER PRICE
1910 NearCut Catalog Reprint	108 pages, paperback with 2004 price guide	\$14.95	\$13.45
NearCut Value Guide	(when purchased separately)	\$3.00	\$2.70
1930-34 Catalog Reprint	250 pages, paperback with 1997 price guide	\$14.95	\$13.45
1930-34 Catalog Index		\$2.00	\$1.80
1949-53 Catalog Reprint	JUST RE-ISSUED	\$19.95	\$17.95
1956-58 Catalog Reprint	160 pages, paperback, no price guide	\$12.95	\$11.65
NEW... Cambridge Colors II	Hardcover with price guide	\$19.99	\$17.99
Caprice	200 pages, paperback with 2003 price guide	\$19.95	\$17.95
Caprice Value Guide	(when purchased separately)	\$5.00	\$4.50
Decorates	136 pages, paperback, no price guide	\$14.95	\$13.45
NEW... Etchings (2nd Edition)	Now available	\$17.95	\$16.15
Etchings, Non-Catalogued	70 pages, paperback, no price guide	\$12.95	\$11.65
Etchings: Blossomtime	26 pages, paperback, no price guide	\$7.95	\$7.15
Etchings: Candlelight	30 pages, paperback, no price guide	\$7.95	\$7.15
Etchings: Chantilly	44 pages, paperback, no price guide	\$7.95	\$7.15
Etchings: Diane	53 pages, paperback, no price guide	\$7.95	\$7.15
Etchings: Elaine	64 pages, paperback, no price guide	\$9.95	\$8.95
Etchings: Portia	57 pages, paperback, no price guide	\$7.95	\$7.15
Etchings: Wildflower	42 pages, paperback, no price guide	\$7.95	\$7.15
Rock Crystal Engravings	119 pages, paperback, no price guide	\$17.95	\$16.15
Rock Crystal Engravings (Listings)	Companion to above; lists all pieces in all patterns	\$9.95	\$8.95
Rock Crystal 1940 Price List		\$14.95	\$13.45
Rose Point	146 pages, paperback with 2007 price guide	\$19.95	\$17.95
Rose Point Value Guide	(when purchased separately)	\$5.00	\$4.50

Other Publications • No discounts:

TITLE	REGULAR PRICE
Glass Candlesticks: Volume I - Akro Agate thru Fenton	\$24.95
Glass Candlesticks: Volume II - Fostoria thru Jefferson	\$24.95
Glass Candlesticks: Volume III - Kanawha thru Wright	\$29.95
Charleton Decorations	\$29.95
1903 Cambridge Catalog Reprint	\$6.00
1927-29 Cambridge Catalog Reprint (with 1996 Price Guide)	\$9.95
1927-29 Value Guide (when purchased separately)	\$3.00
1940 Cambridge Catalog Reprint (unbound, on 3-hole paper)	\$25.00
Binder for 1940 Catalog	\$5.00
Reflections: A History of Guernsey County Glass Production	\$5.00
Cambridge Stemware by Mark Nye	\$19.95
Welker's Volume II (color plates showing pieces from private collection)	\$5.95
The Art of Making Fine Glassware	\$4.00
Glass Animals (2nd Edition)	\$24.95
Kitchen Glassware of the Depression Era (6th Edition) by Gene Florence	\$24.95
Collectible Glassware from the 40's, 50's & 60's (7th Edition) by Gene Florence	\$24.95
Treasures of Very Rare Depression-Era Glass by Gene Florence	\$39.95
Elegant Glassware of the Depression Era (11th edition) by Gene Florence	\$24.95

How to Order by Mail or from the NCC Website

<p>Send orders to: NCC • PO Box 416 • Cambridge, OH 43725</p> <p>OHIO RESIDENTS PLEASE ADD 7% SALES TAX</p> <p>Please include your name, complete mailing address and your phone number or e-mail address.</p> <p>Payments by check or Money Order only, payable to NCC.</p>	<p style="text-align: center;">SHIPPING/HANDLING RATES ON PAGE 20</p> <p><i>Books may also be purchased on the NCC website, in the Members-Only Section. Major Credit Cards are accepted only on web purchases.</i></p> <p><i>See page 2 for website address, user name and password.</i></p>
--	---



Stems Without Thorns

As the world's largest supplier of old & new china, crystal, silver and collectibles, Replacements, Ltd. has more than 700 different patterns of Cambridge crystal.

And however much we enjoy selling pieces that were once thought irreplaceable, we love buying them as well. Thanks to people like you, our crystal inventory currently numbers in the hundreds of thousands, and the numbers keep growing every year.

So, if you've been unsuccessfully searching for that elusive piece of Cambridge - or any other type of fine crystal - call us for a free list of pieces available in your pattern. And, if you're looking to sell pieces you currently have, we can help you there, too.

REPLACEMENTS, LTD.

China, Crystal & Silver • Old & New

1-800-REPLACE
(1-800-737-5223)

1089 Knox Road
PO Box 26029, Dept. CB
Greensboro, NC 27420
www.replacements.com

Classified Ads - Reach over 1,000 avid collectors of Cambridge Glass

Advertising Rates:

1/8 page \$15 1/4 page \$20
1/2 page \$30 Full page \$50
(plus \$5 per photograph)

Classified Ads: 10 cents/word, with a \$2.00 minimum.

Electronic submissions should be emailed to ncccrystalball@charter.net. Use Word or PageMaker. Mailed submissions and all payments should go to PO Box 416, Cambridge, OH 43725. Deadline is 10th of preceding month. Ads must be paid in advance. *Show listings are FREE; send info to PO Box or e-mail address 60 days before event.*



Dealer Directory - \$24 for 12-months, size limited by box (see below). Includes listing on NCC website.

DEALER DIRECTORY

**YOUR AD COULD BE HERE
REACH THOUSANDS OF
COLLECTORS
ONLY \$24 PER YEAR**

THE DEGENHART PAPERWEIGHT
AND GLASS MUSEUM, INC.

P.O. Box 186
Cambridge, OH 43725-0186

Intersection of US 22 & I-77
Phone 740-432-2626

Dee and Tony Mondloch
Phone: 850-747-8290 glass01@knology.net
1609 Clay Ave. Panama City, FL 32405

Precious & Few

Tiffin and Duncan & Miller Glassware,
Other Elegant Glass, Antiques, Collectibles

Shop: www.apreciousfew.com

**YOUR AD COULD BE HERE
REACH THOUSANDS OF
COLLECTORS
ONLY \$24 PER YEAR**

GREEN ACRES FARM

2678 Hazelton Etna Rd.
Pataskala, OH 43062
(State Route 310 North)

Sat & Sun 1-7 pm 740-927-1882
Antiques, Crystal Glass & Collectibles

THE GLASS URN

456 West Main Street, suite G
Mesa, AZ 85201 480-833-2702
480-838-5936

Mail Order Open Shop

CAMBRIDGE, FOSTORIA, HEISEY, etc.

**YOUR AD COULD BE HERE
REACH THOUSANDS OF
COLLECTORS
ONLY \$24 PER YEAR**

John **Burlingame** Betty
Visit our booth (B-6) in
DELILAH'S

301 1st Street Sanford, FL 32771
Antiques, glass, pottery, collectibles, etc.
cell 386-212-7121 tel 407-330-2272

Max Miller

Elegant Glassware • Books • Fiesta
...and more

THE MARKET PLACE
(713) 467-0450 - BUS 10910 OLD KATY RD.
(713) 461-1708 - RES HOUSTON TX 77043
MMXGLASS@aol.com

virtualattic at the glass chalet
specializing in elegant depression era glass

Sandra L. Bridwell-Walker PO Box 3448
William P. Walker Cleburne TX 76033-3448
Phone: 817-202-0940
Sandy's Cell: 817-559-0328 www.virtualattic.com
Bill's Cell: 817-357-7084 virtualattic@sbcglobal.net
theglasschalet@sbcglobal.net

Remember...

When writing to these dealers,
please include a self-
addressed, stamped envelope.



John & Peggy Scott
Scotland Ridge Farm
PO Box 1001
Aurora, MO 65605

SCOTTY'S ANTIQUES


*Elegant Glassware of the Depression Era
Mainly Cambridge and Florence Ceramics
Retirement: Selling all inventory
at reduced prices*

(417) 678-0624
scottjnp@aol.com

DEALER DIRECTORY

When writing to these dealers, please enclose SASE

DAUGHERTY'S ANTIQUES
Antiques and Collectibles



Specializing in
Depression Era, Elegant and Pattern Glass
Porcelain, Pottery and old books

402-423-7426
www.daugherty-antiques.com
sdaugh2515@daugherty-antiques.com

Jerry and Shirley
Daugherty

Milbra's Crystal Buy & Sell

Replacement and Matching
Milbra Long (817) 645-6066
Emily Seate (817) 294-9837
PO Box 784
Cleburne TX 76033

Specializing in
Cambridge,
Fostoria, Heisey
and others

E-mail: longseat@sbcglobal.net
www.fostoriacrystal.com

BARNESVILLE ANTIQUE MALL
open 7 days, 8 - 5
Nancy and Brian Mayhugh
Owners

202 N. Chestnut St. 740-425-2435
Barnesville, Ohio 43713 3 floors
EXIT 202 OFF I-70 • always buying & selling antiques

ALADDIN LAMP BOOKS
Free History of Aladdin Lamps
Figurine Lamps Wanted
Bill & Treva Courter
brtknight@aol.com
3935 Kelley Rd. Phone 270-488-2116
Kevil, KY 42053 FAX 270--488-2116

Fostoria Glass Society of America
Traveling Ambassadors
Ralph & Joyce Rider

For info: 817-545-5856
E-mail: r.rider@sbcglobal.net

B&H ANTIQUE MARKETPLACE
3739 Highway 29 North
Danville, VA 24540
(434) 836-4636
www.bhantiqueauctions.com

Cambridge • Heisey • Duncan • Fostoria
Open Thur-Sat 11:00 to 5:00 (seasonal hours apply)

Glass Menagerie Antiques
Your Website for quality Glass from
the 20's, 30's, 40's & 50's.
www.glasstresurechest.com

BAKER FAMILY MUSEUM
805 CUMBERLAND ST.
CALDWELL, OHIO 43724
740- 732-6410
bakermuseumnellbaker@msn.com

Wed & Thurs 9-4; Fri - Sat 9-5

CRYSTALLINE COLORS
Cambridge • Fostoria • Elegant Glass

Riverfront Antique Mall
New Phialdelphia, OH (I-77, exit 81)
Booth #'s 626 and 616

Lynne R. Franks 216-661-7382

CRYSTAL LADY
Thurs. - Sat. 11-5
1817 Vinton St. Omaha, NE 68108
Bill, Joann and Marcie Hagerty
Shop 402-341-0643 Home 402-391-6730

Specializing in Elegant Glass & Collectibles
www.crystalladyantiques.com

Storck's Antiques
Rick & Joyce
Antiques & Collectibles
Fenton, Imperial, Heisey & Cambridge
Storck1@aol.com (763-477-6415)
Booth 11 & 12 in the Antique Mall
12820 Main Street, Rogers, MN

 **Mother Drucker's**
Penny Drucker
Specializing in Elegant Glassware
Shows & Mail Order

PO Box 18087 (775) 851-7539
Reno, NV 89511 (888) MDRUCKER
www.motherdruckers.com

Deborah Maggard, Antiques
Specializing in Cambridge Glass,
American Hand-Made Glass & Victorian Art Glass

We buy one piece or entire collections.
Please contact me at 440-247-5632
debbie@deborahmaggardantiques.com

P.O. Box 211 • Chagrin Falls, OH 44022

GLASS FROM THE PAST
Maureen Gillis



www.glassfromthepast1.com
email: maureen@glassfromthepast1.com

JUDY'S ANTIQUES
Judy Bennett
422 S. Ninth Street (corner of Jefferson)
Cambridge, Ohio 43725

Business (740) 432-5855
Residence (740) 432-3045
CAMBRIDGE GLASS MY SPECIALTY

Cherished Collectibles
Shopping 24 hours in our online store
Glassware, Figurines, Collectors' Plates

www.cherished-collectibles.com
Elegant and Depression Era Glass


Mon. thru Sat. 10 - 5:30 • Sunday 12 - 5:30

Bogarts' Antiques

BUY • SELL • APPRIASE • REFINISH • CANE & REED CHAIRS
CLOCK REPAIR

Jack & Sharon Bogart ST.RT. 40
740-872-3514 shop 7527 EAST PIKE
740-826-7439 home NORWICH, OHIO
43767

BOGARTSANTIQUES@CORE.COM

 **Mary Jane's Antiques**
Early American Pattern Glass
Depression Era Items

2653 Burgener Drive (217) 422-5453
Decatur, IL 62521 mjhumes@aol.com

THE GLASS HOUSE ANTIQUE MALL
Furniture, Pottery, Glass
Antiques and Collectibles
I-70 Exit 146, East on SR 40

8825 E. Pike
Norwich OH 43767 TEL 740-872-3799

GATEWAY ANTIQUE MALL, INC.
JUST NW OF MINNEAPOLIS-ST.PAUL, MN
Next to Super 8 in Rogers, MN
(I-94/101 intersection)

Multi-Dealer
7 days; 10am - 6pm • 763-428-8286
ELAINE STORCK, OWNER/DIRECTOR

ISAACS ANTIQUES
(740) 826-4015

See our booths in Penny Court Mall in
Cambridge and at White Pillars Antique Mall
(Route 40, one mile west of
I-70 Norwich, OH • Exit #164)

PENNY COURT MALL
637 Wheeling Avenue
Cambridge, Ohio
100 Booths 15,000 sq ft

HOURS: Daily 10-6 Sunday Noon-5
Closed: Easter, Thanksgiving, Christmas

Call for other holiday hours 740-432-4369

MARGARET LANE ANTIQUES
2 E. Main St. New Concord, OH 43762
Lynn Welker (740) 826-7414

Cambridge Glass Matching Service
Hours: Mon-Fri 10-12 AM, 1-5 PM
or by appointment

 **ur House Antiques**
Linda & David Adams
Las Vegas, NV

702-838-1341 or
800-357-7169

Web: www.OurHouseAntiques.com
E-mail: David@OurHouseAntiques.com



Additional NCC Merchandise

Frosted Cobalt Scotty Dog Bookends



\$110/pair
Plus \$12 shipping &
handling; sales tax if
applicable.

Refer to Page 20 for Ordering Information

National Imperial Glass Collectors Society

31st Annual Convention, Show & Sale

May 31 - June 3, 2007 - St.

Clairsville, Ohio

Glass Show and Sale on Saturday & Sunday
June 2-3

For information visit the NIGCS website at
www.imperialglass.org

E-mail: info@nigcs.org, or

write to NIGCS, PO Box 534, Bellaire, OH 53906

Correction: We have been advised that the gentleman's name was incorrect in the "Mixing the Batch" article in the February Crystal Ball. He has been identified as George Sklener. He worked in the factory in the era of H.J. Hancock and was a master at his craft. He mixed the glass with a shovel for measurement.



Your Editor needs informational articles, tidbits, personal experiences, etc. for possible inclusion in the May issue of the Crystal Ball - please send to ncccrystalball@charter.net

To allow sufficient time to prepare your Crystal Ball and send it to the printers in a timely fashion, **all date sensitive contributions must be received by your Editor no later than the 15th of the month.**

Of course articles etc. will be accepted at any time. However, depending on space and cut-off date, they may appear in a later edition.

National Cambridge Collectors, Inc.
PO Box 416
Cambridge OH 43725

website: www.cambridgeglass.org
e-mail: ncccrystalball@charter.net
(not for address changes, please)

FIRST CLASS MAIL