



Cambridge Crystal Ball

Published by the National Cambridge Collectors, Inc. as a resource which informs, invites and inspires the continued preservation of the glass produced by the Cambridge Glass Company of Cambridge, Ohio for future generations.

Issue No. 407

May 2007

****Announcing New Annual Renewal/Giving Plan****

The Board of Directors has approved a change in how we renew members from a monthly expiration plan to an annual one. This may be a bit complicated, so please read this carefully.

The Annual Giving Plan has been under discussion for many years and its adoption has been hastened by the illness to our Membership Chairperson.

How Has it Worked in the Past?

You joined NCC in some particular month. For the year(s) that followed, you were sent a renewal notification in your Crystal Ball in that designated month. Let's say you joined in May. That would be your renewal month for years to come.

This meant that every month of the year, we were sending renewal notices to members. The quantity varied each month based on how many members were in that particular renewal cycle. That also meant that administratively we had to track each member's monthly renewal date and had to process renewals 52 weeks of the year.

For those who don't renew, they are "graced" three copies of the Crystal Ball (meaning we sent them the next three months even though they had yet to renew). We also sent a renewal reminder by mail if they had not responded to the renewal insert in their Crystal Ball.

If they did not respond to these offers, they were removed from the membership roster after three months. We would then usually send at least once a year, a non-renewer mailing to these folks that usually brought a few back to the club.

How Will it Work Moving Forward

The new model is you will join for a year. You will be a member for 2007, 2008, 2009, etc. We will no longer be renewing monthly.

Instead of getting your renewal in the Crystal Ball, you will be sent a letter. Starting next year in 2008, this letter will likely be sent in late January or early February and ask you to renew for 2008.

You will have the same support levels to choose from: Patron, Century, Mardi Gras, Japonica and The President's Circle. Your support to the organization remains the cornerstone to the Club's ability to grow, flourish and endow our Museum for years to come. (An example of the "2007 Response Form" is on page 4 of this Crystal Ball.)

What about 2007?

No membership renewals have been mailed since late January or early February and we need to implement a new program just for this year.

You will be receiving a letter approximately three to five days after receipt of this Crystal Ball, with our solicitation for 2007. This letter will also include your ballots for this year's Board of Directors election – an example of the ballot is in this issue of the Crystal Ball (see page 11).

You will be offered choices of levels of support and can make your own choice that will be accepted by the Board.

Let's say you just renewed last October at the Patron level and don't feel you should pay the entire \$22 this early for 2007. Just pay what you feel is reasonable or merited, and we will accept it and thank you for renewing!

If you have already paid in 2007, we thank you for your membership and no further action is required – other than returning your Board ballots.

We think this new way of handling membership will streamline operations and we are grateful to Tarzan Deel for being willing to handle the Database Administration aspect of this and to Mike Strebler, our Treasurer, for his vision in working with Sharon Miller to create this sensible plan.

National Cambridge Collectors, Inc.

PO Box 416 Cambridge, OH 43725-0416

Membership

Patron: Single \$22; with 1 Associate \$25

•Additional Associate memberships are available at \$3 each.

Benefactor - Century: \$100

•Includes membership for Master Member and unlimited Associate Members, plus Century Club membership for Master Member.

Benefactor - Mardi Gras: \$200

•Includes membership for Master Member and unlimited Associate Members, plus Century Club membership for all members (limit of two plaques in Museum).

Benefactor - Japonica: \$500

•Includes membership for Master Member and unlimited Associate Members, plus Century Club membership for all members (limit of two plaques in Museum).

President's Circle: \$1,000

•Includes membership for Master Member and unlimited Associate Members, plus Century Club membership for all members (limit of two plaques in Museum). Also includes Convention registration for two adults and one copy of each new NCC book upon publication.

❖❖❖❖❖❖❖❖❖❖❖

Associate Members must be at least 18 years of age and live in the same place of residence as the Master Member. Associate Members have full voting rights, but do not receive an additional copy of the newsletter.

National Museum of Cambridge Glass



**Located at 136 S. 9th Street in
downtown Cambridge, OH**

Wed-Sat 9am - 4 p.m. - Sunday Noon - 4 p.m.

Admission: \$3, Seniors & AAA members \$2

NCC Members & children under 12 FREE

Contacts

NCC Museum [open April thru October only]

(phone)..... (740) 432-4245

(fax)..... (740) 439-9223

Rick Jones, President.....e-mail: Caprice0@aol.com
David Ray, Secretary.....e-mail: westervillesh@hotmail.com
Helen Klemko, Crystal Ball Editor....e-mail:ncccystalball@charter.net

Address Changes

Please send address changes to:

Membership - NCC

PO Box 416

Cambridge, OH 43725

or by e-mail to:

tarzandeel@verizon.net

Websites

- **NCC WEBSITE**
www.CambridgeGlass.org
- **NCC WEBSITE - MEMBERS ONLY SECTION**
www.CambridgeGlass.org/NCCmembers
(User Name: NCC • Password: CarmeN)
- **MIAMI VALLEY STUDY GROUP WEBSITE**
www.mvsg.org

Officers & Committee Chairs

President	Rick Jones
Vice-President	Ken Filippini
Secretary	David Ray
Treasurer	Mike Strebler
Sergeant-at-Arms	Larry Everett

Acquisitions	Lynn Welker
Archivist	Mark A. Nye
Auction	Squeek & Dorothy Rieker

Budget & Finance	Lynn Welker
By-Laws	Mike Strebler
Convention	Alex Citron
Crystal Ball	Shelley Cole
Endowment	Helen Klemko, Executive Editor
Facilities	Rick Jones
Glass Dash	Carl Beynon
Glass Show & Sale	Larry & Susan Everett

Grants & Fundraising	Mary Beth Hackett & Joy McFadden
Membership	Sharon Miller
	Linda Adkins

	Tarzan Deel, Database Administrator
Museum	Cindy Arent
Nominating	Ken Filippini
Program	David Ray
Projects	Bill Hagerty
Publications	Mark A. Nye
Publicity	Lorraine Weinman
Study Group Advisory	Judy Rhoads
Technology	David Adams, Webmaster

Board of Directors

Linda Adkins	Cindy Arent	Shelley Cole
Larry Everett	Ken Filippini	Rick Jones
Sharon Miller	Mark Nye	David Ray
Mike Strebler	Lorraine Weinman	Lynn Welker



President's Message

Leaving Nothing to Chance

Our membership is our lifeblood. We want you all around for a long time and we want you to encourage others to join National Cambridge Collectors, Inc. We have an important preservation mission and so much still to do.

With the illness to Linda Adkins, who is still on the prolonged mend, we had a real vacuum in handling our membership renewals. This created a gap in our regular member communications as well as a cash flow issue as no renewal income was arriving.

Enter Mike Strebler and Sharon Miller. They didn't want to leave anything to chance and proposed that we rapidly move forward with a conversion to an annual giving model like those used by other preservation organizations and universities.

Mike, who is CFO at Kent State University's foundation division, sought out some of his experts at the University. They strongly encouraged that we rapidly adopt the annual model and move away from the monthly renewal process. They also provided advice on how to handle the direct mail package. It is great that we have that kind of expertise at our disposal for our NCC efforts.

The administration of the mailing is being handled by our new Crystal Ball printer for a reasonable fee of under \$400. A sensible move today.

Any time a new program is implemented, there are bound to be questions. If you are confused at all, please email us at ncccrystalball@charter.net or call the Museum at the number on page two. One of us, probably me, will get back to you VERY soon. My business travel has been very crazy lately, but I'll try to get back to you in a day or two.

The article on page one says give whatever you wish and it will gladly be accepted. We mean this! To calculate what is "partially" owed by over seven hundred households and a thousand persons would be an overwhelming chore. Just not possible for a volunteer organization. Please look at your individual circumstances, if you only want to make a partial contribution this year, please do so. We appreciate you as a member, thank you for your generosity and ask for your goodness in spirit to help support the many opportunities in front of us.

I'm particularly inspired by our commitment to eliminate the entirety of our Museum mortgage by the end of this September. This is remarkable accomplishment – almost unthinkable, in fact. I remember the dissenters who said we were stretching too far in our desire to build a first class museum. Not only did we build it (and it's beautiful), we've paid for it! ... thanks to all of you.

Please remember in this membership mailing you will receive in a couple of days not to leave your Board ballot to chance. We once again have a wonderful slate of members willing to serve the organization at a Board level. Please read their bio's in this issue and cast your vote – please vote for three!

Our thanks to Tarzan Deel for his willingness to administer this massive membership database task and for his diligence in ensuring the ballots cannot be mimicked. Our election integrity is paramount.

And thanks to Ken Filippini and his Nominating Committee for recommending such a great slate. I would be proud to serve with any of these candidates and know they all have this club in their heart.

Have you made your reservations for Convention yet? We really want you to come this year. Shelley Cole has put together an exceptional program. I'm looking forward to the visit to the Heisey Museum and appreciate the generosity of their Curator, Walter Ludwig, whom I've known for years.

I can guarantee you will see a great program on Caprice. This one is being prepared by David Ray and the Miami Valley Study Group. Everything they do is topnotch and a highlight of the Convention. I'm sure this will be as spectacular and memorable. Count on it!

Did you make your hotel reservation? Please do it now – leave nothing to chance. And if you call the Comfort Inn, tell them you are with the Cambridge Glass block as they are likely to tell you they are sold out if you don't tell them this.

We appreciate your support of NCC and ask that you please renew your membership now. You are our lifeblood and we appreciate all you do and how your generosity lets us do so much more!

From the Editor's Desk

Chances "R" by Georgia Otten, is a great article on page 5, and sets the theme for this month. Why, because "**Chances Are**" if you are reading the Crystal Ball you are an avid collector of Cambridge glass. Some might say you are a "rabid" collector of Cambridge glass. Never, ever get in front of a serious collector when they are entering a glass show that features the elegant glass they are searching for....it may have dire results. This is the time when an avid collector has tunnel vision and their focus is on the search and acquisition of that elusive item. Often times it is a piece of Cambridge that they really are not looking for, but there it is beckoning to be taken home.

Also, "**Chances Are**" you may be considering:

..attending the Convention in June. If so, complete the Advance Registration Form on page 8 and mail immediately.

..what level of support you will be forwarding to your Club through your annual giving. Your Club competes for your annual giving dollars and without your generosity the NCC cannot continue to flourish and grow. **Please consider pledging at the Century (\$100); Mardi Gras (\$200); Japonica (\$500) or President's Circle (\$1,000) level for 2007.** Continued and increasing support is absolutely necessary to cover expanding costs. As you are all aware, postage rates will rise in May which results in a significant increase in the cost of mailing the Crystal Ball to over 700 households.

..volunteering your time to further the efforts of an already amazing group of members who work tirelessly and give selflessly of their time behind the scenes.

..writing an informational article, tidbit, personal experience etc. for possible inclusion in the Crystal Ball. Your writings are very important to keep the publication interesting for the members. Please send articles to me at ncccrystalball@charter.net. Photos are always a plus.

Did you know that the NCC.....

- ❖ has approximately 1,000 members from more than 40 states with Ohio having the largest representation;
- ❖ has a wonderful Museum located in Cambridge, Ohio;

and did you know.....


- ❖ it takes in excess of 25 hours each month to prepare the Crystal Ball layout ready for printing;
- ❖ the Crystal Ball is your Club's connection with the members. In conjunction with the new enhanced printed version, the Crystal Ball has the following updated Vision Statement to reflect its integral role in the Club's growth:

"Published by the National Cambridge Collectors, Inc. as a resource which informs, invites and inspires the continued preservation of the glass produced by the Cambridge Glass Company of Cambridge, Ohio for future generations."

I will be out-of-the-country the latter part of May, early June, so the June/July Crystal Ball will be printed and mailed towards the end of June.

Helen K. 

Example of Annual Giving "2007 Response Form"

National Cambridge Collectors P.O. Box 416 Cambridge, OH 43725 www.cambridgeglass.org nccglass@verizon.net			2007 Response Form
Membership Number	Member Name	Include in Directory Yes No	email
_____	_____	_____	_____
_____	_____	_____	_____
_____	_____	_____	_____

Patron:

_____ \$ 22 Single

_____ \$ 25 Family

_____ \$ 3 Additional

Benefactors:

_____ \$ 100 Century

_____ \$ 200 Mardi Gras

_____ \$ 500 Japonica

President's Circle

_____ \$ 1,000

Amounts contributed to the National Cambridge Collectors are tax-deductible. Please make your check payable to the National Cambridge Collectors, and return, with this reply form, in the envelope provided.

Chances "R"

by Georgia G. Otten

If you are reading this publication, chances "R" you're a collector. To refine it farther, chances "R" you collect Cambridge glass!

Assuming then that you are a collector of Cambridge glass, you had to start somewhere with your collection. We all did. Our new Crystal Ball Editor, Helen Klemko would love to hear from you! Perhaps you inherited some glass. Perhaps you bought something at a garage sale you thought was 'pretty' and later found it to be Cambridge glass. Perhaps a friend introduced you to his or her passion for the glass. No matter how one starts a collection, or adds to it, it is interesting to know about it. So, alphabetically speaking, here is a start. "R" you ready to collect more Cambridge glass?

Let's get into those books. But wait; are you interested in shape, color, cuttings, or etchings? Rubina, Roxbury, Rose Point (ah-h-h.) and of course Round! There are many choices within the "R."

If you have decided on Round as a pattern line or round as a shape, well, you know it would almost be a limitless collection. In fact, you would be able to have doubles (round with Rose Point), as there will be round items in almost any category.

Going into the possible etchings, please go get your Etchings by Cambridge Volume 1.

You will find eleven entries beginning with or containing the "R" in its name. There is of course "Rose" in various etchings, there is the Royal Air Force Staff College, Rye, and to see your Cambridge glass measure up, there is a Ruler etching! "R" you aware of that?

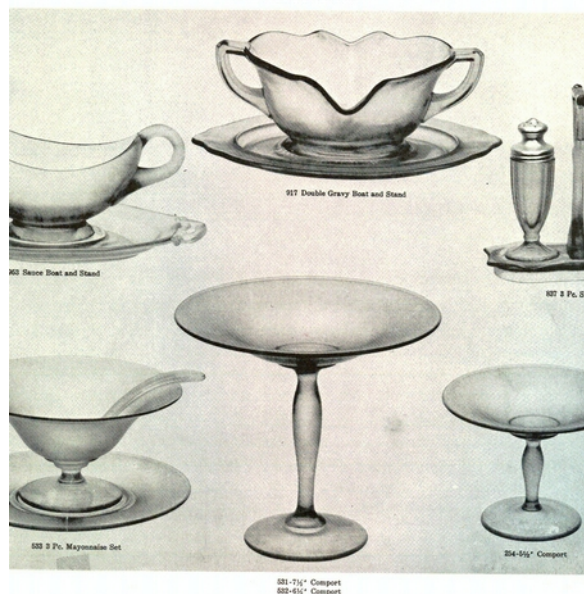
If you have decided on etchings, chances "R" you will also want some color! Royal Blue, Rubina, Ritz Blue, Rose du Barry, and if we stretch it just a bit, LaRosa. Only some of these colors will have etchings or cuttings.

"R" cuttings include Ravenna, Rose Point, Rochelle, Rose Marie, Regent, Roxbury, Rondo, Roses, Radiant Rose, Rhapsody, and Rooster.

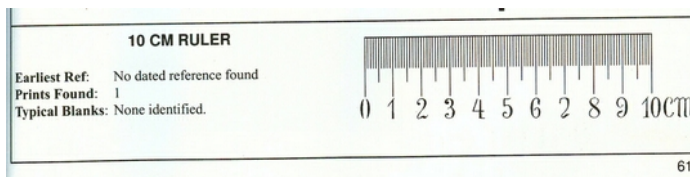


And there might be a Roemer, a ramshead, a relish.....well, you get the picture! "R" you with me? By the way, if you happen on to a Round Rubina item with Rose Point etching or Rondo cutting, make sure you let me know about that.... Either one would be a triple! Dream along with me!

Round Dinnerware



10 CM RULER - no dated reference found



ROCK CRYSTAL ENGRAVED

Rondo (1081)



7966
Low Sherbet



7966
Low Wine



Last month I gave you some highlights for the first couple days of convention, so this month I'll let you know what else will be happening.

In an effort to mix things up a bit, we're planning a game for everyone to enjoy during the weekend. It will create opportunities to meet more people and win a great prize. Look for more details in your Convention Packet when you register.

As I mentioned last time, the Glass Dash opens for the early birders at 7:00 a.m. on Saturday. Admission is higher, but you have a shot at getting the best glass. At the Glass Dash, the dealers don't start unpacking their wares until the buyers start coming through the door. You stand a chance of being the first person to touch a fabulous piece of glass and take it home with you. If you just have to sleep in a bit, you can come to the Glass Dash at 8:30, pay a lower admission price and still find some great glass for sale.

On Saturday, the Glass Show and Sale at the Pritchard Laughlin Civic Center opens at 11:00 – the same time the Glass Dash is shutting down.

We have several programs for you to enjoy this year. On Thursday night, a long time dealer and President of the Old Morgantown Glass Collectors' Guild, Leora Leasure will present a program on Old Morgantown Glass. We thought it would be especially nice to have Leora share this beautiful glass with us in celebration of the Old Morgantown Glass Collectors' Guild Glass Museum which opened in Morgantown, WV earlier this year. One of the things that drew me to Cambridge Glass was the beautiful colors and Morgantown shares that aspect of design with Cambridge. Be sure to join us for what I'm sure will be a wonderful program by someone who loves and appreciates the legacy of this beautiful glass.

On Saturday evening, David Ray, with the assistance of the Miami Valley Study Group will be sharing his knowledge of the Caprice line. Certainly the most prolific line from the Cambridge Company, it's hard to imagine a collector who doesn't have at least one piece. David has collected Caprice since he was 19 years old and has tremendous knowledge on the subject. Be sure to stick around for this informative and interesting program on Saturday night.

During the afternoon on Saturday, we'll have another session of "Tell Me All About." This is a chance to share your love of Cambridge glass with other members. Last year, the people who participated had a wonderful experience. The idea is to get as many members as possible to participate in the program by introducing themselves and describing what Cambridge glass they collect. There will be a list of a couple of common points to cover. Other than that, the presentation is subject to the creative process of the presenter. And of course, we'll have the much anticipated Bring and Brag & Glass ID.

Also on Saturday afternoon, we'll have the awards presentation for the Second Annual Art Show presented by students from the Cambridge area. Cindy Arent will have more information on that on page 9 in this issue.

The evening repast on Saturday will be a Tropical Delight Buffet. Don't forget to bring your favorite Tropical Shirt with you to wear that night. On Sunday afternoon, the Cordials Study Group will once again host a reception for the Former Workers of the Cambridge Glass Factory. All are welcome to join them at the museum for home-made cookies and talk of the glorious days of the Cambridge Company.

I'm told that the June/July issue of the Crystal Ball will be coming out late June so be sure to find the registration form in this issue, fill it out and return it. You may also download the Registration Form from our web site at CambridgeGlass.org.

See you in June!—Shelley Cole, Convention Chair, 434 296-2531 or slunicorn@aol.com

Convention Registration

“Cambridge in the Garden”

National Cambridge Collectors, Inc.

34th Annual Convention

June 27 – June 30, 2007

Cambridge, Ohio

Advance Registration Form

Please complete the form on the back of this page and return it no later than June 1, 2007. (Registrations post marked after June 1 will incur a late charge. See below for cancellation policy.)

Send your check payable to National Cambridge Collectors, Inc. along with this completed registration form to:

National Cambridge Collectors, Inc.
Convention Registration
P.O. Box 416
Cambridge, OH 43725-0416

Do not enclose this registration with your election ballot. Ballots are opened during convention so your registration will not be processed before convention starts. That means we don't know you're coming until you get there.

Each person registering for the convention must pay the registration fee of \$20.00 regardless of which events will be attended. The registration fee includes admission to the NCC Glass Show and Sale and all other scheduled events as well as a Convention Booklet and Souvenir. Please register for all events you plan to attend, including those offered at no charge. For children under ten years old there is no registration fee. However, they will not receive the Convention Booklet or Souvenir.

Picnic: Due to the rising costs associated with convention, there will be a \$5.00 per person charge for the picnic.

Show dealers: *If you are a member of NCC, Inc. and wish to participate in other convention activities, registration is \$15 (regular registration fee less show admission charge). The benefits are the same. Late fees apply.*

Please list each person registering separately. Names should be given as you wish them to appear on your name badge. Please provide your NCC, Inc. membership number. If registering for more than 4, please list additional members on a separate sheet.

If you would like to receive an email confirmation of receipt of this registration form, please give us your email address. **This is the only way we can provide confirmation of your registration.**

Cancellation Policy

Written Cancellation up to 30 days before first convention event – full refund.

Written Cancellation up to 15 days before first convention event - full refund less \$10 handling fee.

Written Cancellation up to five days before first convention event – refund meals only.

Written Cancellation less than 5 days before first convention event – no refund.

**“Cambridge in the Garden”
National Cambridge Collectors, Inc.
Advance Registration Form
June 1 Deadline**

Name of Conventioneers (please print legibly as you wish it to appear on your Name Badge)	Membership #	1 st Convention? (circle one)	Friday Banquet Choice (circle one if you plan to attend the Banquet)
_____	_____	Yes No	Pork* Chicken*
_____	_____	Yes No	Pork Chicken
_____	_____	Yes No	Pork Chicken
_____	_____	Yes No	Pork Chicken

Email address _____ Phone Number (____) _____
(for registration confirmation)

ACTIVITY	FEE	NUMBER ATTENDING	Total
Registration (postmarked by June 1)	\$20.00	_____	\$ _____
Late Registration (postmarked after June 1)	\$30.00	_____	\$ _____
Dealer Registration (\$25 if registering after June 1)	\$15.00	_____	\$ _____
Wednesday Picnic	\$ 5.00	_____	\$ _____
Friday Evening Banquet	\$25.00	_____	\$ _____
Saturday Tropical Delight Dinner	\$18.00	_____	\$ _____
Optional Donation to NCC for _____ (i.e. museum acquisitions, endowment, etc.)			\$ _____
		Total	\$ _____

*Pork Chop stuffed with mushroom duxelle, lightly breaded and sautéed and topped with bordelaise sauce.

*Chicken Cordon Bleu

If you have special dietary needs, please let us know and we will do our best to accommodate you.



For Information and Planning Purposes Only

Please indicate how many will attend the following event:

Car Pool to Heisey Museum, 8:45 a.m. Thursday _____

Major Field(s) of Cambridge Collecting _____
(This information will appear in the Convention Packet.)

**The Convention Registration Form is available on the NCC Website - www.CambridgeGlass.org.
Print a copy of the form, complete and mail as soon as possible.**

2007 Convention Activities

By Cindy Arent and Judy Rhoads

“Dash through the Past” at the Museum – Take Two!

Mark your calendars for June 29th, pack your sneakers and get ready to “Dash through the Past” with us at the museum again this year. For those of you who survived last year, we promise some new activities that you won’t want to miss! No, you won’t be required to sprint down South Ninth Street, but we will keep you moving through the learning stations every ten minutes.

Mark Nye will be hosting one station in the museum auditorium. In another session you will go on a museum scavenger hunt using “something” original from The Cambridge Glass Company. The winner from each group might even get a small prize! We promise you will learn something new about Cambridge Glass.

Student Art Show

The Second Annual Student Art Show will be on the schedule and you will again be voting for the Collectors Choice Award. The students are already hard at work on their projects. The 2007 display will be in the Galleria at the Pritchard Laughlin Civic Center and you must vote by Friday evening. The results will be announced at the student awards presentation on Saturday morning in the Galleria.

Cambridge Glass Company Worker’s Reunion

On Sunday, the Cambridge Cordials Study Group will be hosting the Annual Cambridge Glass Worker’s Reunion at the Museum at 1:00. Last year was very successful and we are looking forward to learning more from the people who made the beautiful glassware that we collect. You won’t want to miss this opportunity to meet and talk with these special people.

First Timers’ Get-Together

Whether this will be your first NCC Convention, or whether you have been around a while, plan to come to the First Timers’ Orientation meeting on Thursday afternoon, June 28, at the beginning of Convention. It’s fun for everyone. This is an opportunity for old and new collectors to get together and make new glass collecting friends. Mentors will be there: folks who make themselves especially available during Convention to newcomers to answer questions, to be guides, and to make new friends. There will be lots of glass stories (what glass collector doesn’t LOVE to tell stories!) and plenty of laughs. Be sure to come!

Study Groups Meeting

If you are a long-time Study Group member, **this meeting is for you!**

If you wish there was a Study Group near you, **this meeting is for you!**

If you want new ideas to energize your Study Group, **this meeting is for you!**

If you would like to form a Study Group, but need help getting started, **this meeting is for you!**

Each year we get together to share Study Group information and ideas, encourage each other, and discuss issues. The more people who come, the more good ideas are brought forward. Be sure to come with your ideas and suggestions! The meeting is Friday morning, June 29, at the Convention Center.



The Mini Auction

• An NCC Tradition •
Friday Night, June 29th

Bring glass to donate to the Mini Auction
A great way to support the mission of the NCC • All proceeds go to the NCC

We want good-quality Cambridge Glass, with a market value of \$25 or more
Any donations valued under \$25 may be donated for sale in the museum gift shop

Bring your glass to the Registration Table at Convention
no later than 1:00 pm on Friday



Candidates for the Board of Directors

Larry Everett

Larry Everett is currently serving on the NCC Board and has served as secretary during his tenure. Larry and Susan are co-chairs for the Glass Dash event during convention and have served in this capacity for several years. Larry has also been a part of several presentations about



Cambridge glass during the convention and to other groups interested in glass. I very much enjoy my tenure as a Board member and my attempt to represent the membership in a positive manner. I have lived in several states outside of Ohio and am well aware of the issues that member's face that must travel to attend convention, quarterly meetings and other functions. I feel that we have made improvements, but there is still much work to be done. My hat is off to Alex Citron who first put the Crystal Ball in electronic form and made it available to all members. Also a big salute to Helen Klemko for her diligence in gathering information and successfully lobbying the Board to change publishers for the Crystal Ball and allowing it's transformation to a product we can all be proud of. We appreciate the hard work both have done to improve the main source of information to our membership.

We as an organization have changed in many ways in the last five years. The Museum has grown and prospered, thanks to the hard work of many individuals. But in the main, our members in the Cambridge area shoulder many of the day to day tedious tasks and do it so well and without complaint that many of us do not fully appreciate all that they do. We have adopted a new membership model, and I feel that this will be one of the keys to our future success and survival. As we pay off our debt, we will become more and more committed to growing the endowment fund to ensure the survival of the Cambridge Glass story in perpetuity. We need to find new members and nurture them and allow them to find their niche. We also need to encourage our current members to take a more active role as we all work to improve our organization. Without a doubt the best part of any organization are the members and just getting together and growing friendships. If you have never been to a convention or a quarterly meeting, please make an effort to attend, you will go home with many new friends and pleasant memories.

Nancy Finley

My husband, Jim, and I have collected Cambridge glass for over 20 years. I have a great love for the beautiful glass and its history. As a Board member I would be able to contribute to the continuation of our Club and the goals of the NCC. I am retired now, and



therefore can spend time on the things I always wanted to do. One of those things is to become more active with our Club. My work history included working with groups and individuals toward common goals. I was a Social Worker for a hospice for a few years and learned to work with multiple personalities and disciplines. I also worked as a secretary, bookkeeper and data processor, for many years, in our business. As a "retired person" I keep busy doing volunteer work. I am on the Board of Directors for our local Boys & Girls Club and the Public Library. I give tours as a docent at the Daum Museum of Contemporary Art (I've got to plug our beautiful art museum). I also mentor a 5th grader at one of our local schools. All of the projects that I am involved in give me great pleasure and satisfaction. I believe I would be an asset for the NCC Board and I would honored to be elected.

Larry Everett (continued)

On a more personal note, I must confess that I have met very few things that are not worthy of collecting. Cambridge glass is a special love, mainly because of the variety of lines, shapes and colors. What started out as a small Rose Point collection has expanded into madness! I blame this addiction to the members of the Miami Valley Study Group and a segment of the program called Show and Tell. It should be renamed, "I gotta have one of those!"

Larry is an Associate Professor and Head of the Engineering department at Clark State Community College. He is also serving as the Clark State Faculty President. He is married to Susan, a Professor and Head of the Agriculture and Horticulture departments at Clark State. Larry and Susan met at Iowa State University while completing their Ph.D. degrees. Larry has also earned an MBA from the University of Missouri.



Candidates for the Board of Directors

Sharon Miller

Sharon Miller and her husband, Joe, live in the country near Pleasant City, Ohio. Sharon is the Principal of Shenandoah High School in the Noble Local School District. She received her BSEd and MEd from Ohio University and did her doctoral studies at The Ohio State University. Sharon is active in several community organizations and has served these organizations in a number of ways. She and Joe are both active members of Holy Trinity Parish in Byesville where they serve in several capacities.

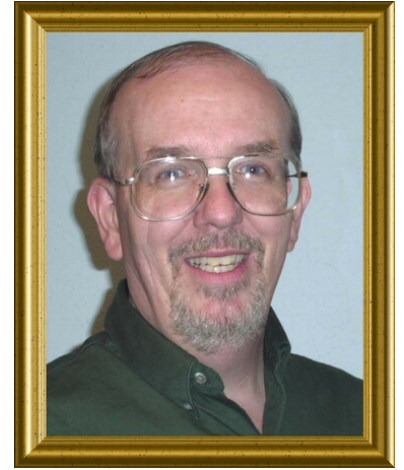


Sharon has been a member of NCC, Inc. since 1991, when she attended a convention with her son, Jeff Ross. Since that initial contact, the opportunity to learn more about a local art form and the opportunity to meet people who love Cambridge glass became an inspiration to become actively involved in the organization. Sharon volunteers many hours to the Club and has served as grants and fundraising chair, board secretary and treasurer. Until recently, Sharon and Joe labeled and mailed the Crystal Ball publication each month.

I am running for re-election to the NCC, Inc. Board because I believe in the goals and mission of the organization. I wish to continue to help the organization pursue the preservation of, and education about, the wonderful product produced by The Cambridge Glass plant. I have taken an active role in helping to design and implement the student field trip experience, "A Dash Through the Past", and student art show for elementary students. I believe the future of NCC is being shaped through the exposure of young people to the Museum, as well as thoughtful, long-range planning that will ensure the future of NCC, Inc. I have been proud to serve on the NCC, Inc. Board for the past eight years and would appreciate the opportunity to continue to be a thoughtful, active Board member.

Freeman Moore

Freeman Moore is seeking your vote for election to the NCC Board. An obvious question is: Why? The future of this organization needs everyone's input. The NCC Board represents its members in charting the future. We need to envision a future which is built upon our great work, but also reaches out to members; past, present, and future. It's that kind of involvement that enables organizations to grow and develop. Freeman has lived in Texas for the past 22 years and can offer a different perspective to the board, promoting the national part of NCC. If elected, his main focus will be communicating the benefits of membership to the national audience.



Freeman has been active in the North Texas study group, and supporting NCC in several states. If you attended the 2005 convention, you might remember the presentation he did on Saturday night about the Mt Vernon line. This is one example of sharing information and helping to fulfill the mission of NCC – preservation and education. Freeman and Jeannie enjoy numerous kinds of Cambridge glass, with a particular weakness for Mt Vernon, Rose Point and 80 oz. ball jugs.

During the day, Freeman is manager of engineering training for Raytheon. His PhD in computer science is from the University of North Texas, and he continues to teach on a part-time basis for Southern Methodist University.



Official Ballot
2007

Ballots must be received by June 22, 2007
Results announced at Annual meeting

Candidates for Board of Directors

- _____ Sharon Miller
- _____ Nancy Finley
- _____ Freeman Moore
- _____ Larry Everett
- _____ Lynn Welker

Do Not Use
Example Only
Select three (3)





Candidates for the Board of Directors

Lynn Welker

Lynn can't remember when he was not interested in collecting Cambridge glass or supporting the Club and the Museum. Active at the Museum and on the Board, Lynn is concerned about keeping costs down and maximizing all the Club's assets. He is Chairman of the Acquisitions Committee in charge of doing all the paperwork on donations to the Museum. He also works on Museum displays. Everyone knows he has moved every piece of glass in the Museum at least once. He also co-chairs the Auction with Squeek and Dorothy Rieker.



A graduate of Muskingum College in business, history, and music, he has been a fraternity advisor for thirty years at Muskingum. He also enjoys an occasional round of golf, but would rather be at an auction or antique show.

As to Cambridge glass, Lynn and his family love it all. His special interests are cordials, nudes, and gold and silver decorations on colored Cambridge. He also collects children's glass, furniture and American art pottery. The Welker family has completed four publications on Cambridge glass. Lynn has also been involved in helping Mark Nye work on publications for the Club.

His goals for the Club are to constantly improve the Museum and increase membership. His favorite part is finding more unusual pieces for the Museum displays. His goal for the year is to start writing for the Crystal Ball, again. He welcomes any ideas for the Museum or auction!



2007 NCC CONVENTION MOTEL INFORMATION

Wednesday, June 27 - Sunday, July 1, 2007

All of these motels are located in Cambridge at Exit 178, Ohio Route 209 off Interstate 70. Remember to mention that you are attending the National Cambridge Collectors Convention. Book before June 15 to ensure availability and best rates.

AMERIHOST CAMBRIDGE

State Route 209 South
740 439-1505
\$59 single or double includes extended continental breakfast
(Indoor pool, in-room amenities)

BEST WESTERN CAMBRIDGE

1945 Southgate Parkway
740 439-3581
Approximately 50 rooms available until 06/20/04
\$54.95 single or double includes continental breakfast
(Outdoor pool, in-room amenities)

HAMPTON INN CAMBRIDGE

8775 Georgetown Rd
740 439-0600
\$80 per night
Rates include continental breakfast
(Indoor pool, business center, wireless internet)

HOLIDAY INN CAMBRIDGE

2248 Southgate Parkway
740 432-7313
\$65 night for 2 or more night stay
(Outdoor pool, in-room amenities)

COMFORT INN CAMBRIDGE

2327 Southgate Parkway
740 435-3200
\$70 single or double includes continental breakfast
Evening snacks in the lobby
(Indoor Pool, in-room amenities)

DAYS INN CAMBRIDGE

2328 Southgate Parkway
740 432-5691
\$45 single or double includes continental breakfast
(Outdoor pool, in-room amenities)

The Flag Goes Up on a New Season!

By Cindy Arent

It is hard to believe that the Museum has opened for the sixth season at the South Ninth Street location. It seems like only yesterday that we were building showcases and moving the museum collection to its new home. One thing we have learned in the past few years is to think and plan ahead. We already have a tour scheduled for December 9th and have set weekend hours for the end of November and early December in order to attract visitors from the Dickens Victorian Village event in downtown Cambridge. These additional days and hours of operation will be printed in a future issue of the Crystal Ball.

The Museum opened for the 2007 season on April 1st. Since we were open for special tours and events last November and December, the time period for the annual cleaning was shortened to just January and February. There wasn't a weekend during these months that volunteers weren't on site cleaning glass, setting up new displays and doing general cleaning.

This year we have many new displays and several pieces have been added to the showcases. The three feature rooms are already attracting the interest of Museum visitors. The first room features an outstanding array of glassware from many different glass companies. The National Depression Glass Association has loaned pieces from their National Collection to provide people the opportunity to learn about their organization, as well as observe the differences in glassware produced during the depression era and beyond. Linda Bredengerd and Sarah VanDalsem arranged the display in such a way that visitors can easily identify the company that produced each piece.

The 2007 Sample Room features Chantilly pieces on loan from Diane Gary. The small table in the room has been set for dinner with several pieces of stemware, plates and accessories. The original Cambridge Glass Company shelving units are filled with unusual pieces etched Chantilly, as well as Ebony items from the museum collection.

The color Amethyst is elegantly displayed in the Dining Room this year. The collection is on loan from Lindy Thaxton. A few additional items have been loaned by Marybelle Moorehead Teters and Cindy Arent. On the buffet are two #1555 20 inch vases. This vase was featured on a Cambridge Glass Company parade entry years ago and a photo is on display in the Museum. The centerpiece



Cindy Arent, Sandi Rohrbough, Carl Beynon and Betty Sivard raising the flag for the new season.

on the table is an Amethyst Flying Lady bowl flanked by a pair of #3011 Crystal and Amethyst candlesticks.

You won't want to miss the new Paymaster's Office display in the Education Center. Walter O'Malley was the Cambridge Glass Company paymaster throughout most of its history. We have tried to replicate his office using original payroll sheets, turn cards and time cards. The safe recently donated by the Mosser family completes the exhibit.

Again this year, Mark Nye has written the 2007 Museum Guided Tour Book which needs to be updated each season. This book is used by visitors as they tour the Museum. It is also available for purchase in the museum gift shop and will be listed in the NCC eBay store.

Many, many thanks to all of the volunteers for their assistance in preparing the Museum for opening, and to David Adams for loading the new display photos onto the website. The 2007 slide show is now available for viewing for those of you who cannot visit the Museum. Hopefully, you will be able to visit us in Cambridge this year and see the dazzling displays which are more breathtaking in person. We look forward to seeing you soon!



Walter O'Malley was the Paymaster for many years at the Cambridge Glass Co., and his office has been replicated in the Education Center at the Museum. The mannequin is shown holding an original 1935 company payroll recap sheet and an authentic Cambridge Glass Co. pencil. The safe recently donated by the Mosser family completes the exhibit.

Minutes of the March 2007 Quarterly Meeting

President, Rick Jones, called the meeting to order at 7:45PM.

A motion was made to dispense with the reading of the Minutes from the November Quarterly Meeting. Motion passed. Mark Nye moved (second Rich Bennett) to accept the Minutes from the November Quarterly Meeting as printed in the Crystal Ball. Passed.

Treasurer's Report: Mike Strebler - Mike presented the membership with an annual report of 2006. Currently we have \$120,048.57 (\$58,315.86 – unrestricted; \$6,041.21 – restricted; \$55,691.50 – endowment) in cash assets. This represents an increase of \$27, 947.24 (\$27,673.29 – unrestricted; -\$1,990.22 – restricted; \$2,264.17 – endowment) over one year ago. The majority of the increase comes from the success of the Symphony Model for membership, the sale of the Green Scotties, and the Silent Auction. Our debt totals \$76,440 (\$26,400 - mortgage; \$50,000 - line of credit). The Cambridge moulds were purchased from the Summit Art Glass Company for \$50,000 using our line of credit. The moulds were moved from Cleveland to Cambridge at a cost of \$615. The Board has voted to eliminate the mortgage on the Museum using unrestricted funds no later than September 1, 2007. Ideas for eliminating the debt accrued by the purchase of the moulds from Summit Art Glass Company are ongoing.

Committee Reports:

Museum: Cindy Arent – Thirty-two NCC members participated in the Dickens Christmas Holiday Parade. In 2007, the Museum will be open additional hours on weekends during the Dickens Victorian Village event. Those weekends include: November 24 & 25, December 1 & 2, December 8 & 9, and December 15 & 16. A glass blower scene will be added to the Dickens Victorian Village for 2007. The Feature Display Room is housing a portion of the NDGA's National Collection. The Dining Room has been decorated using amethyst glass from the collection of Lindy

Thaxton with a few additional pieces from Marybelle Moorehead and Cindy Arent. The Sample Room is being decorated with Chantilly from the collection of Diane Gary with a few additional pieces from Frank and Vicki Wollenhaupt and the Museum collection.

Facilities: Carl Beynon – The pitch pans are leaking into the Museum. A heating unit may need to be replaced at approximately \$3,500. Overall, everything appears to be in good shape.

Nominating: Ken Filippini – The Nominating Committee consisted of Jeannie Moore, Tarzan Deel, and Paul DuChamp. Board members whose terms are ending this year are Larry Everett, Sharon Miller, and Lynn Welker. Larry, Sharon, and Lynn are interested in running again. Other members interested in running are Nancy Finley and Freeman Moore. Ken made a motion (Mark Nye second) to close nominations. Passed. A motion by Steve Klemko (second Bev Acord) was made to accept these five candidates. Passed.

Programs: David Ray – The 2007 November Program will be held on Saturday, November 3, 2007 at the Cambridge Country Club. Lynn Welker has agreed to lead a program on Cambridge etchings.

Projects: Bill Hagerty – NCC has contracted for Mosser to produce approximately 150 pairs of light Amethyst Scottie Dogs. We still have approximately 50 pairs of Royal Blue Scotties (approx. 28 frosted and approx. 25 unfrosted). Bill Hagerty and Carl Beynon will check for working moulds that could yield future projects.

Publications: Mark Nye – A new Rosepoint Book will be available and will sell for \$19.95 and the price guide will sell for \$5.00.

Publicity: Lorraine Weinman – NCC convention Show and Sale card and posters are printed and available for distribution.

Convention: Shelley Cole – The 2007 NCC Convention is scheduled for the fifth weekend of June and will be titled "Cambridge in the Garden". Shelley is looking to add a couple of smaller programs. **Glass Show:** Rick Jones - Contracts for the glass show have been mailed.

Glass Dash: Larry Everett – Contracts for the Glass Dash will be mailed soon.

Crystal Ball: Helen Klemko – The Board voted to approve nine enhanced black and white issues and two full color issues of the Crystal Ball to be printed by Indexx along with their delivery service. The February and August issue will be printed with color. Indexx is a printing company located in Greenville, SC. No Crystal Ball will be published in July.

Frank Wollenhaupt moved (second Jeannie Moore) to adjourn the meeting. Passed.

Meeting adjourned at approximately 8:40PM.

Your Editor needs informational articles, tidbits, personal experiences, etc. for possible inclusion in the June/July issue of the Crystal Ball - please send to ncccrystalball@charter.net

To allow sufficient time to prepare your Crystal Ball and send it to the printers in a timely fashion,

all date sensitive contributions must be received by your Editor no later than the 10th of the month.

Of course articles etc. will be accepted at any time.

However, depending on space and cut-off date, they may appear in a later edition.

NUDES

After at least 2 attempts at a sale, (one on March 31st and one on April 2nd) a #40 flying nude lady bowl in amber did not sell either time. The highest final hammer price was \$776 and the other price was not worth mentioning.

A gorgeous #3011 nude stemmed cupped comport with a Royal Blue top sold on 4/8 for \$289.

April 3rd saw the sale of a fabulous #3011 nude stemmed all-crystal flared comport with a beautiful Rock Crystal cutting described as Cambridge's #611 cutting. It sold for \$360. Really breathtaking.

CAPRICE

A most wonderful Caprice #201 ice bucket in Moonlight Blue Alpine with chrome bail sold on 4/8 for a glorious \$309. So absolutely stunning with the Alpine finish. A most gorgeous pair of #1358/8 Moonlight Blue Caprice 3-light epergnes did not sell on 4/5. The final hammer price was \$1,451 for the pair. Everything was Moonlight Blue including the bobeches, arms and vases. But there was damage to a couple of the vase rims and each vase was cloudy. Amazing reserve with such stated damage. Still gorgeous.

A #87 crystal Caprice mustard and cover sold for \$62 on 4/8. They really are hard to find.

Also on 4/8, a seldom seen and extremely exciting pair of #17 cups and saucers in Pistachio sold for \$58 for the pair. The Pistachio color in the Caprice pattern is so dangerously vivid and I would say green, greener, greenest in its own, alluring shade.

FLOWER FROGS

On 3/29 a totally and treacherously gorgeous Rose Lady flower frog in frosted or satin Light Emerald sold for \$267. I mean it looked marvelous.

A perfectly pink Two Kids flower frog sold for \$284 on 4/1. The pink looked cotton-candy pink and not at all orangey. Simply celestial.



A perfectly mint (as described) crystal large heron flower frog sold on 4/11 for \$75. That's really a fabulous flower frog. If you don't yet have one, make it a priority before or at least during convention 2007. On 3/25 a most elusive pair of #2900 flower arcs in Moonlight Blue were sold for \$89. They are seldom seen and were oh, so luxurious to view.



SWANS

A most luscious 3" swan in Crown Tuscan with the beautiful and certainly understated Gardenia Charleton decoration, sold on 4/9 for \$123. Fab-ola.

March 31st was the sale date of yet another crystal swan punch bowl and cups. This auction featured the swan punch bowl and 12 of the swan punch cups. There was a ladle pictured, but not mentioned in the description. This set sold for \$1,427.

What appeared to be an 8" black swan sold for \$202 on 4/13 while on 4/3 a 10" black swan sold for \$152. Different sellers, both swans said to be in mint condition. Timing is everything in glassware.

ROSE POINT

A piece I won't even buy anymore in crystal RosePoint is the #3500/64 divided 3-part rectangular celery/relish. But on 4/8 I missed one in Crown Tuscan with gold-encrusted RosePoint etching. So absolutely GORGEOUS! The gold looked to be 100% in my opinion although the description stated it to have minor wear on the high points of the handles. Whatever. I think I have seen maybe 2 of these in 16 years. Let's see, that's about one Crown Tuscan GE RosePoint relish for every oh, 5,000 crystal ones that I see. These simply found crystal RP pieces are elusive and total gems in Crown with gold. Don't ever pass them up. This one sold for \$93. Where was I at that day!!!

A very elusive pair of P.499 Calla Lily candleholders in RosePoint sold on 4/2 for \$239. Believe it or not, a second pair of these

sold on 4/4 for \$205. Don't let that fact fool you though, they are not easily located.

A gorgeous, (and one of many sold every month) #3400/152 high-handled Doulton pitcher or jug etched RosePoint sold for \$300 on 4/1. These jugs are just so stunningly gorgeous in their design and just so perfect in every way that every time I own one, I can't help but stare at it if only for a little while. This is one of the pieces of glass that hooked me on this glass business in the first place. Damn that jug anyway.

A #3500/51 small handled basket etched RosePoint, gorgeous piece, sold on 4/9 for \$200. Awful picture. It looked like a ghost of the piece; a mere white out-line.

OTHER ETCHES

On 3/22 a gorgeous #1312 low footed cigarette box and cover with a Heatherbloom box and lid and crystal stem and foot and etched Gloria sold for \$202. There was a small chip on the inside edge of the lid but who cares! What a glorious piece.

March 17th was the sale date of a beautiful #1066 cigarette holder with ashtray foot in crystal and etched Elaine. It sold for \$685. That's right, I said crystal Elaine.



What must've been one of the most beautiful pieces of Cambridge glass I've seen in awhile was sold on 4/1. It was a #1066 parfait in Light Emerald with a crystal stem and foot and etched with the gorgeous Apple Blossom pattern. It sold for \$215. Too bad the picture was so blurry that you could barely make out the pattern let alone see how gorgeous the clarity of the glass must have been. Why is it that people just don't take a bit more time to get a decent picture?

An absolutely gorgeous #3400/1240 oval 4-footed bowl in Willow Blue with Apple Blossom etching sold for \$225 on a Buy-it-

Continued from page 15

Now format on 4/13. Completely gorgeous and so difficult to find this stumpy footed bowl in light blue with or without an etching. Does the beauty ever stop!!!

MISCELLANEOUS

An absolutely jaw-droppingly gorgeous #1242 crystal frosted vase with a decoration of flying geese over pine trees in silver overlay sold for \$666 on 4/5.

The silver overlay was obviously heavy and by Rockwell and stupendous. Not listed under the Cambridge category, but in the elegant glass category, enough people found it to push it to its commanding final hammer price.



April 6th saw the sale of a fabulously fabulous cologne bottle and perfect dauber/stopper in Helio with a wonderful gold-encrusted border etching and gold trim for \$230. It was absolutely stunning. March 21st was the sale date of a lone #3500 cordial in Carmen with a crystal stem and foot. Truly difficult to find. It sold for a very nice \$75.



Also on 3/21 was the sale of a two-piece set in Cambridge Square and both pieces in Carmen. There was a large torte plate and large bowl. So much Carmen for the eyes to take in all at once. Fabulous. That set sold for \$150.

Calendar of Events

NCC Events

2007 Convention

June 27-30, 2007

August Quarterly Meeting

Saturday, August 25
(tentative)

If you know about any upcoming glass shows or other glass events, please pass the word on to us at least six to eight weeks before the show dates. These listings are free of charge.

Upcoming Glass Shows

June 9-10:

Belleville Depression Glass Show & Sale
Belle-Clair County Fair Grounds
Belleville, Ill
Call: (618) 259-5059
E-mail: tuckant@charter.net



August 4-5:

Chicagoland DG Show & Sale
Wheaton, Ill
Call: (618) 259-5059
E-mail: tuckant@charter.net



August 18-19:

Houson Glass Club's Festival of Glass & Antique Show & Sale
Rosenberg, TX
Call: (281) 342-4876 or (713) 729-4267
E-mail: rddalton3627@msn.com

Dealer setup and Cambridge Rose Point display at the South Florida Depression Glass Club Show.

August 24-26:

Milwaukee DG Show & Sale
Milwaukee, WI
Call: (262) 376-9874



August 25-26:

Metroplex DG Show & Sale
Grapevine, TX
Call: (817) 875-6292 or
www.dfwglass.com

Fleur de Lys Healy manning the NCC book table at the recent South Florida Depression Glass Club Show. With Fleur is Gary Jackson.

September 14-16:

Sanlando DG Show & Sale
Sanford, FL
Call: (407) 298-3355
(407) 855-5502
E-mail: milliesglass@webtv.net



**Peach State Depression Glass Club
31st Annual Collectible Glass Show & Sale**

July 21-22, 2007

**Cobb County Civic Center
Marietta, Georgia**

**For information phone:
Lorna Hart: (770)579-9225
www.psdgc.com**

Showcasing our Members

GROWING UP WITH GLASS

*Contributed by Tony Nettell,
from California*

I have been interested in Depression era glass since I was 12 years old, (I am now 25), going from shop to shop with my mother, looking to complete the sets she had inherited from my grandmother. As I became more familiar with depression glass, I started collecting myself, starting with a few depression patterns, such as green "Adam" by Jeannette and green "Parrot" by Federal.

I fell in love with Cambridge Glass when I saw my mother come home with a Gold Krystol creamer and sugar in the "Apple Blossom" etch. (She is mainly devoted to depression glass but has a few miscellaneous pieces in elegant glass.) I fell in love with Apple Blossom and decided to collect it in moonlight blue. (I am a major fan of blue patterns, due in part to my mother's Hocking blue "Mayfair" set.) I also started collecting blue "Cleo" as well. I am working on a place setting for four in these patterns. I've been diligently collecting these for about 4 years now and have over 150 pieces of the two patterns combined. I also started acquiring Apple Blossom in Heatherbloom as well. I have a basic luncheon set for four including the 3400/1 13" centerpiece bowl! Some thrilling finds for me include a blue Cleo #730 1/2 lb. candy with cover, Ritz Blue samovar etched Martha, and blue Apple Blossom 3400/52 butter with cover, just to name a few. I am always searching for beautiful Cambridge in my local shops and am always adding something to my cabinets. It is my passion and I thoroughly enjoy the friendship with fellow collectors. I am truly blessed with the glass I have been able to acquire and the friends I have made because of it.



Tony with a portion of his "blue" collections

Study Groups

The NCC has several study groups; these are the groups currently active and holding regular meetings. Listed below is contact information for these study groups.

If there is no study group in your area and you are interested in starting or joining a new study group, please contact NCC Study Group Advisor, Judy Rhoads at kjrhoads@aol.com.

#13 - Miami Valley Study Group
Miami Valley area, Ohio
Larry Everett
db0098@dragonbbs.com
(937) 675-6491

#14 - The Cambridge Cordials
Cambridge, Ohio
Lorraine Weinman
blweinman@hotmail.com
(330) 966-9376

#15 - North Texas Cambridge Study Group
Dallas area, Texas
Scott Pierce
scottpierce1@msn.com
(817) 427-9510

#16 - Elegant Glass Collectors
PA & NJ
Bill Dufft
billnvon@aol.com

#17 - The Columbus Wildflowers
Columbus, Ohio
Barbara Wyrick
bwyr@ee.net
(614) 291-0361

#20 - South Florida Study Group
Miami, FL
Linda Gilbert
rosepointbabe@aol.com

#21 - Crazy 'bout Cambridge Study Group
Indiana
Beth Sarchet
bethsarchet@bluemarble.net

Study Group Reports:

Bev & Ed Groshens of Milwaukie, Oregon, sent the following complimentary comments regarding the program writeup "Decanters - Cambridge & Others" by The Columbus Wildflowers.

"I just wanted to let you know how much we enjoyed the article in March's issue on pinch decanters. Articles like this are really helpful to those of us who live so far away from Ohio. Also, we do not have a Study Group in Oregon. We are planning to come to Cambridge sometime to visit the museum."

The Columbus Wildflowers Study Group #17 - Apr2007

On Thursday, April 5, 2007, the Wildflowers met at the home of David Ray at 7:00 pm.

We began with our business meeting and discussed the NCC Convention this year, and that our group will donate an item for the mini-auction. David Ray will be presenting a program on "Caprice" on Saturday night at Convention, so we are looking forward to that. We also set our next meeting for May 3rd at Ken Nicol's, and our topic will be to bring glass that we find interesting or unusual or just want to discuss.

David began our program on "Shades of Green," with an informative handout, and members brought a table full of items in various shades of Green for comparison. Unlike the Blues we had previously studied, the Greens seemed to be more straight forward, and except for a short period between 1944 and 1948 when WWII stopped the production of almost all colored glass, Cambridge produced some kind of Green glass.

Starting in **1903** a varying green color was used in Children's Toy Sets, which was **similar to Imperial's Verde Green**.

Then around **1916**, Cambridge introduced "Emerald." This name was reused in 1923 and again in 1949, so collectors refer to this color as "**Early Dark Emerald**." It was used on Inverted Thistle and Inverted

Strawberry (often gold encrusted) and as a base color for Cambridge's Carnival Glass. This was discontinued before 1923. The Inverted Thistle has been reproduced, and is sometimes marked with a Bennett "B."

In **1923** a new Emerald was introduced, coined "**Light Emerald**" which factory worker's referred to as **Apple Green**. This was produced for 20 years, and in the Table for a batch of over 1,400 pounds of ingredients, only 13 oz of Copper Oxide and 43 oz of Uranium Dioxide were the two ingredients which gave it the Light Emerald color. We looked at an 8-inch Swan, Bud Vase with Hanging Heart etch, Stem with Apple Blossom etch, and an Everglades Vase with the Light Emerald completely satinized on the outside but shiny on the inside, in a variation called Jade.

In **1927** the opaque "**Avocado**" was introduced and produced for only 2

years. Research shows that the official name may have been **Pomona Green**. Rarely found with any etched patterns, Avocado has been seen with gold encrusted Hunt Scene and is found on items not produced in any other opaque color such as the Tombstone Bookends and a few Decagon items. We saw examples of an Ink Well and Pin Tray with gold encrusted Rose design, and a Creamer.

In **1931** Henry Hellmers developed "**Forest Green**" which continued through 1943. Forest Green, Early Dark Emerald and Late Dark Emerald are very similar, so the production date of the item is often the best way to tell which color it is, although some of the Forest Green and Late Dark Emerald items do overlap. The difference, however, can be seen under black light, and we looked at a Georgian Basket, 2-lite Keyhole Candlestick with bobeches and prisms, and Style One 8-inch Swan.

In **1938**, **Pistachio** was introduced and ran for two time periods: from 1938 to 1943, and again from 1955 to 1958. The early color is most common on Caprice, and used in Varitone sets and drinking items and we saw a Pistachio Nude Cocktail and Cordial. The late Pistachio of 1955 was produced for a short time, and used for Crackle items such as the Tumbler we studied. There

Continued on page 19



Cambridge Glass for Sale

Sue's Glass

Sue E. Cameron
3854 Wosley Drive
Fort Worth, Texas 76133

suesglass@sbcglobal.net

817-292-3678

#3400/92 Amethyst 32 oz. decanter & stopper, (6) #1341 1 oz. cordials	\$75.00 Set
#3400/119 Amethyst 12 oz. cordial decanter & stopper, (6) #1341 1 oz. cordials	\$55.00 Set
#3400/92 Amber 32 oz. decanter & stopper, (6) #1341 1 oz. cordials	\$50.00 Set
#3400/92 Dark Amber 32 oz. decanter & stopper	\$40.00
#1341 Amber 1 oz. cordial, optic. (4) available	\$8.00 Ea.
#3121 Gold Encl. Rosepoint 10 oz. goblet - (1) only	\$55.00
#3400/45 Crystal Rosepoint bowl	\$75.00
#1338 Crystal Rosepoint 3 lite candlesticks, pair	\$125.00 Pr.
#3400/68 Crystal Rosepoint Sugar and Creamer	\$60.00 Pr.
#3400/77 Crystal Rosepoint Shakers - New NCC lids	\$75.00 Pr.
#3200 Wild Rose Punch Bowl, (12) 5 oz. cups	\$225.00 Set
#3200 Wild Rose Punch Cup, 5 oz. - (25) available	\$8.00 Ea.
#847 Willow Blue Ice Tub, Marked	\$20.00
#87 Crystal Mount Vernon 1 oz. footed cordial - (5) available	\$10.00 Ea.
#72 Crystal Candlestick, Diane Etch	\$75.00
#244 Milk Glass Caprice Vase	\$95.00
#237 Milk Glass Caprice Vase	\$95.00
#188 Amethyst Caprice 2 oz. tumbler, (4) available	\$45.00 Ea.
#92 Moonlight Blue Caprice Ind. Shakers, plastic tops, old	\$80.00 Pr.
#92 Crystal Caprice Ind. Shaker - (1) only - lid sterling with MOP inlay	\$40.00
#54 Moonlight Blue Caprice 10 1/2", 4 ftd. Belled bowl	\$70.00
#66 Mandarin Gold 13", 4 ftd. Crimped bowl	\$75.00

Questions and inquiries for specific items welcomed. Texas Residents must add 8.25% sales tax.
Shipping and insurance extra.

Continued from page 18

is a slight difference in color and some pieces seem to produce a film, or almost greasy feel, possibly caused by humidity.

An **undocumented shade of green** has also surfaced with a slight bluish cast, seen only on the 1327 Favor Vase, Stradivari Cocktail, Small Joe, and Nude Cocktail and Brandy (of which we had an example). There is a dispute on whether it was one turn, or some think a color only made for one week, or perhaps even a bad batch, and timing is approximated to be just before the reopen period.

In **1949**, the last Emerald was introduced, dubbed "**Late Dark Emerald**" and was very similar to Forest Green on limited items of the Caprice, Cascade and Pristine lines, as

well as Farber items and some Georgian and Sea Shell items, and we saw a Shell Ashtray with Charleton decoration, 3400 Ball Decanter, and Style Three 8-inch Swan.

We had a rather fun debate on whether the opaque "Jade" should be included with the greens, since it has such a bluish green color, and then looked at Green Decorations, such as the Nanking Green Enamel on a Willow plate, and a Green Flashed Candlestick with Wheeling Decorating hand painted flowers.

Our meeting ended with Show and Tell and this month's items included: a Carmen Tally Ho Stem with gold trim on the bottom; a 3-lite Keyhole Candlestick etched Rosepoint; a Crystal Perfume with Topaz stopper and gold encrusted floral Rose etch; an Amber Comport that we determined to

be Tiffin; a satiny white "Alexandria" Figural Compact of Czech glass where the bottom was extremely similar to the bottom of the Cambridge dresser box with sections for powder, rouge and lipstick; a Northwood "Grape Arbor" Pink Stained Custard Glass Tankard made from a Carnival glass mould; and an Aladdin 11-inch G-70 Lamp Figurine in Satin Crystal.

Our informative meeting adjourned at 10:00 pm. After our May meeting, the Wildflowers will take the summer off and meet again on September 8th at the Lyle's.

—respectfully submitted by Barbara Wyrick, Secretary

NCC Merchandise

Scotty Dog Bookends



\$112/pair
Cobalt Blue
includes shipping

Salt & Pepper Tops



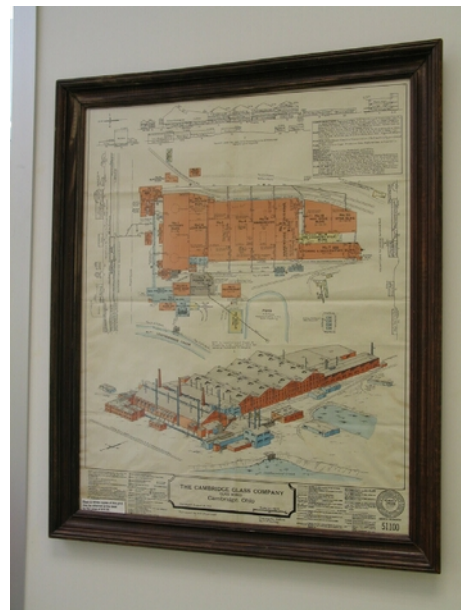
Polycarbonate plastic will fit most Cambridge shakers, such as Rosepoint footed and flat-bottom shakers. They also fit Heisey Rose, Saturn, Plantation, Crystalite and some Orchid. Fit some Anchor-Hocking and Candlewick.

\$6/pair

Order 20 pair (or more) and pay only \$5 per pair.

Factory Map and Elevation

Reproduced from the original, which hangs in the NCC Museum



\$12.50 each

Cat's Meow: NCC Museum



\$20

NCC Logo Pin



\$5 each

Comemorative Tape Measure

Issued for the Grand Opening of the National Museum of Cambridge Glass



Special...\$1 each

"The Crystal Lady"

Copy of an original Cambridge Glass promotional film; shows the manufacture of a goblet.

VHS or DVD \$15

"Primrose"

Prism Sign

2006 Convention Favor

\$15



Vaseline Prism Sign

2005 Convention Favor



\$15 each

Book and Merchandise Sales thru the NCC Website are back on-line. To order, go to www.CambridgeGlass.org and click on Members-Only.

Send orders to:

NCC • PO Box 416 • Cambridge, OH 43725

OHIO RESIDENTS PLEASE ADD 7% SALES TAX

Please include your name, complete mailing address and your phone number or e-mail address. Payments by check or Money Order only, payable to NCC.

How to Order

SHIPPING/HANDLING:

All items (including books) except Scottys:	
Total order up to \$6	\$1.50
\$6.01 to \$25.00	\$4.50
\$25.01 to \$50.00	\$5.50
\$50.01 to \$75.00	\$6.50
Over \$75.00	\$8.50

Books for Sale

*Published by NCC • Members receive a 10% discount • **CLICK ON BOOK TITLE TO ORDER THRU NCC WEBSITE***

TITLE		REGULAR PRICE	MEMBER PRICE
1910 NearCut Catalog Reprint	108 pages, paperback with 2004 price guide	\$14.95	\$13.45
NearCut Value Guide	(when purchased separately)	\$3.00	\$2.70
1930-34 Catalog Reprint	250 pages, paperback with 1997 price guide	\$14.95	\$13.45
1930-34 Catalog Index	Index for above	\$2.00	\$1.80
1949-53 Catalog Reprint	300 pages, paperback, no price guide	\$19.95	\$17.95
1956-58 Catalog Reprint	160 pages, paperback, no price guide	\$12.95	\$11.65
NEW... Cambridge Colors II	Hardcover with price guide	\$19.99	\$17.99
Caprice	200 pages, paperback with 2003 price guide	\$19.95	\$17.95
Caprice Value Guide	(when purchased separately)	\$5.00	\$4.50
Decorates	136 pages, paperback, no price guide	\$14.95	\$13.45
Etchings (2nd Edition)	102 pages, paperback, no price guide	\$17.95	\$16.15
Etchings, Non-Catalogued	70 pages, paperback, no price guide	\$12.95	\$11.65
Etchings: Blossomtime	26 pages, paperback, no price guide	\$7.95	\$7.15
Etchings: Candlelight	30 pages, paperback, no price guide	\$7.95	\$7.15
Etchings: Chantilly	44 pages, paperback, no price guide	\$7.95	\$7.15
Etchings: Diane	53 pages, paperback, no price guide	\$7.95	\$7.15
Etchings: Elaine	64 pages, paperback, no price guide	\$9.95	\$8.95
Etchings: Portia	57 pages, paperback, no price guide	\$7.95	\$7.15
Etchings: Wildflower	42 pages, paperback, no price guide	\$7.95	\$7.15
Rock Crystal Engravings	119 pages, paperback, no price guide	\$17.95	\$16.15
Rock Crystal Engravings (Listings)	Companion to above; lists all pieces in all patterns	\$9.95	\$8.95
Rock Crystal 1940 Price List		\$14.95	\$13.45
Rose Point - Second Edition	146 pages, paperback with 2007 price guide	\$19.95	\$17.95
Rose Point Value Guide	(when purchased separately)	\$5.00	\$4.50

Other Publications • No discounts:

TITLE	REGULAR PRICE
Glass Candlesticks: Volume I - Akro Agate thru Fenton	\$24.95
Glass Candlesticks: Volume II - Fostoria thru Jefferson	\$24.95
Glass Candlesticks: Volume III - Kanawha thru Wright	\$29.95
Charleton Decorations	\$29.95
1903 Cambridge Catalog Reprint	\$6.00
1927-29 Cambridge Catalog Reprint (with 1996 Price Guide)	\$9.95
1927-29 Value Guide (when purchased separately)	\$3.00
1940 Cambridge Catalog Reprint (unbound, on 3-hole paper)	\$25.00
Binder for 1940 Catalog	\$5.00
Reflections: A History of Guernsey County Glass Production	\$5.00
Cambridge Stemware by Mark Nye	\$19.95
Welker's Volume II (color plates showing pieces from private collection)	\$5.95
The Art of Making Fine Glassware	\$4.00
Glass Animals (2nd Edition)	\$24.95
Kitchen Glassware of the Depression Era (6th Edition) by Gene Florence	\$24.95
Collectible Glassware from the 40's, 50's & 60's (7th Edition) by Gene Florence	\$24.95
Treasures of Very Rare Depression-Era Glass by Gene Florence	\$39.95
Elegant Glassware of the Depression Era (11th edition) by Gene Florence	\$24.95

How to Order by Mail or from the NCC Website

<p>Send orders to: NCC • PO Box 416 • Cambridge, OH 43725</p> <p>OHIO RESIDENTS PLEASE ADD 7% SALES TAX</p> <p>Please include your name, complete mailing address and your phone number or e-mail address.</p> <p>Payments by check or Money Order only, payable to NCC.</p>	<p style="text-align: center;">SHIPPING/HANDLING RATES ON PAGE 20</p> <p><i>Books may also be purchased on the NCC website, in the Members-Only Section. Major Credit Cards are accepted only on web purchases.</i></p> <p><i>See page 2 for website address, user name and password.</i></p>
--	---



Stems Without Thorns

As the world's largest supplier of old & new china, crystal, silver and collectibles, Replacements, Ltd. has more than 700 different patterns of Cambridge crystal.

And however much we enjoy selling pieces that were once thought irreplaceable, we love buying them as well. Thanks to people like you, our crystal inventory currently numbers in the hundreds of thousands, and the numbers keep growing every year.

So, if you've been unsuccessfully searching for that elusive piece of Cambridge - or any other type of fine crystal - call us for a free list of pieces available in your pattern. And, if you're looking to sell pieces you currently have, we can help you there, too.

REPLACEMENTS, LTD.

China, Crystal & Silver • Old & New

1-800-REPLACE
(1-800-737-5223)

1089 Knox Road
PO Box 26029, Dept. CB
Greensboro, NC 27420
www.replacements.com

Classified Ads - Reach over 1,000 avid collectors of Cambridge Glass

Advertising Rates:

1/8 page \$15 1/4 page \$20
1/2 page \$30 Full page \$50
(plus \$5 per photograph)

Classified Ads: 10 cents/word, with a \$2.00 minimum.

Electronic submissions should be emailed to ncccrystalball@charter.net. Use Word or PageMaker. Mailed submissions and all payments should go to PO Box 416, Cambridge, OH 43725. Deadline is 10th of preceding month. Ads must be paid in advance. *Show listings are FREE; send info to PO Box or e-mail address 60 days before event.*



Dealer Directory - \$24 for 12-months, size limited by box (see below). Includes listing on NCC website.

DEALER DIRECTORY

**YOUR AD COULD BE HERE
REACH THOUSANDS OF
COLLECTORS
ONLY \$24 PER YEAR**

THE DEGENHART PAPERWEIGHT
AND GLASS MUSEUM, INC.

P.O. Box 186
Cambridge, OH 43725-0186

Intersection of US 22 & I-77
Phone 740-432-2626

Dee and Tony Mondloch
Phone: 850-747-8290 glass01@knology.net
1609 Clay Ave. Panama City, FL 32405

Precious & Few

Tiffin and Duncan & Miller Glassware,
Other Elegant Glass, Antiques, Collectibles

Shop: www.apreciousfew.com

**YOUR AD COULD BE HERE
REACH THOUSANDS OF
COLLECTORS
ONLY \$24 PER YEAR**

GREEN ACRES FARM

2678 Hazelton Etna Rd.
Pataskala, OH 43062
(State Route 310 North)

Sat & Sun 1-7 pm 740-927-1882
Antiques, Crystal Glass & Collectibles

THE GLASS URN

456 West Main Street, suite G
Mesa, AZ 85201 480-833-2702
480-838-5936

Mail Order Open Shop

CAMBRIDGE, FOSTORIA, HEISEY, etc.

**YOUR AD COULD BE HERE
REACH THOUSANDS OF
COLLECTORS
ONLY \$24 PER YEAR**

John **Burlingame** Betty

Visit our booth (B-6) in

DELILAH'S

301 1st Street Sanford, FL 32771
Antiques, glass, pottery, collectibles, etc.
cell 386-212-7121 tel 407-330-2272

Max Miller

Elegant Glassware • Books • Fiesta
...and more

THE MARKET PLACE

(713) 467-0450 - BUS 10910 OLD KATY RD.
(713) 461-1708 - RES HOUSTON TX 77043
MMXGLASS@aol.com

virtualattic at the glass chalet
specializing in elegant depression era glass

Sandra L. Bridwell-Walker PO Box 3448
William P. Walker Cleburne TX 76033-3448
Phone: 817-202-0940
Sandy's Cell: 817-559-0328 www.virtualattic.com
Bill's Cell: 817-357-7084 virtualattic@sbcglobal.net
theglasschalet@sbcglobal.net

Remember...

When writing to these dealers,
please include a self-
addressed, stamped envelope.



John & Peggy Scott
Scotland Ridge Farm
PO Box 1001
Aurora, MO 65605

SCOTTY'S ANTIQUES


*Elegant Glassware of the Depression Era
Mainly Cambridge and Florence Ceramics
Retirement: Selling all inventory
at reduced prices*

(417) 678-0624
scottjnp@aol.com

DEALER DIRECTORY

When writing to these dealers, please enclose SASE

DAUGHERTY'S ANTIQUES
Antiques and Collectibles



Specializing in
Depression Era, Elegant and Pattern Glass
Porcelain, Pottery and old books

402-423-7426
www.daugherty-antiques.com
Jerry and Shirley Daugherty

Milbra's Crystal Buy & Sell

Replacement and Matching
Milbra Long (817) 645-6066
Emily Seate (817) 294-9837
PO Box 784
Cleburne TX 76033

Specializing in
Cambridge,
Fostoria, Heisey
and others

E-mail: longseat@sbcglobal.net
www.fostoriacrystal.com

BARNESVILLE ANTIQUE MALL
open 7 days, 8 - 5
Nancy and Brian Mayhugh
Owners

202 N. Chestnut St. 740-425-2435
Barnesville, Ohio 43713 3 floors
EXIT 202 OFF I-70 • always buying & selling antiques

ALADDIN LAMP BOOKS
Free History of Aladdin Lamps
Figurine Lamps Wanted
Bill & Treva Courter
brtknight@aol.com
3935 Kelley Rd. Phone 270-488-2116
Kevil, KY 42053 FAX 270--488-2116

Fostoria Glass Society of America
Traveling Ambassadors
Ralph & Joyce Rider

For info: 817-545-5856
E-mail: r.rider@sbcglobal.net

B&H ANTIQUE MARKETPLACE
3739 Highway 29 North
Danville, VA 24540
(434) 836-4636
www.bhantiqueauctions.com

Cambridge • Heisey • Duncan • Fostoria
Open Thur-Sat 11:00 to 5:00 (seasonal hours apply)

Glass Menagerie Antiques
Your Website for quality Glass from
the 20's, 30's, 40's & 50's.
www.glasstresurechest.com

BAKER FAMILY MUSEUM
805 CUMBERLAND ST.
CALDWELL, OHIO 43724
740- 732-6410
bakermuseumnellbaker@msn.com
Wed & Thurs 9-4; Fri - Sat 9-5

CRYSTALLINE COLORS
Cambridge • Fostoria • Elegant Glass

Riverfront Antique Mall
New Philadelphia, OH (I-77, exit 81)
Booth #'s 626 and 616

Lynne R. Franks 216-661-7382

CRYSTAL LADY
Thurs. - Sat. 11-5
1817 Vinton St. Omaha, NE 68108
Bill, Joann and Marcie Hagerty
Shop 402-341-0643 Home 402-391-6730

Specializing in Elegant Glass & Collectibles
www.crystalladyantiques.com

Storck's Antiques
Rick & Joyce
Antiques & Collectibles
Fenton, Imperial, Heisey & Cambridge
Storck1@aol.com (763-477-6415)
Booth 11 & 12 in the Antique Mall
12820 Main Street, Rogers, MN

Mother Drucker's
Penny Drucker
Specializing in Elegant Glassware
Shows & Mail Order

PO Box 18087 (775) 851-7539
Reno, NV 89511 (888) MDRUCKER
www.motherdruckers.com

Deborah Maggard, Antiques
Specializing in Cambridge Glass,
American Hand-Made Glass & Victorian Art Glass

We buy one piece or entire collections.
Please contact me at 440-247-5632
debbie@deborahmaggardantiques.com
P.O. Box 211 • Chagrin Falls, OH 44022

GLASS FROM THE PAST
Maureen Gillis



www.glassfromthepast1.com
email: maureen@glassfromthepast1.com

JUDY'S ANTIQUES
Judy Bennett
422 S. Ninth Street (corner of Jefferson)
Cambridge, Ohio 43725

Business (740) 432-5855
Residence (740) 432-3045
CAMBRIDGE GLASS MY SPECIALTY

Cherished Collectibles
Shopping 24 hours in our online store
Glassware, Figurines, Collectors' Plates

www.cherished-collectibles.com
Elegant and Depression Era Glass

Mon. thru Sat. 10 - 5:30 • Sunday 12 - 5:30


Bogarts' Antiques

BUY • SELL • APPRIASE • REFINISH • CANE & REED CHAIRS
CLOCK REPAIR

Jack & Sharon Bogart ST. RT. 40
740-872-3514 shop 7527 EAST PIKE
740-826-7439 home NORWICH, OHIO
43767

BOGARTSANTIQUES@CORE.COM

Mary Jane's Antiques
Early American Pattern Glass
Depression Era Items



2653 Burgener Drive (217) 422-5453
Decatur, IL 62521 mjhumes@aol.com

THE GLASS HOUSE ANTIQUE MALL
Furniture, Pottery, Glass
Antiques and Collectibles
I-70 Exit 146, East on SR 40

8825 E. Pike
Norwich OH 43767 TEL 740-872-3799

GATEWAY ANTIQUE MALL, INC.
JUST NW OF MINNEAPOLIS-ST. PAUL, MN
Next to Super 8 in Rogers, MN
(I-94/101 intersection)

Multi-Dealer
7 days; 10am - 6pm • 763-428-8286
ELAINE STORCK, OWNER/DIRECTOR

ISAACS ANTIQUES
(740) 826-4015

See our booths in Penny Court Mall in
Cambridge and at White Pillars Antique Mall
(Route 40, one mile west of
I-70 Norwich, OH • Exit #164)

PENNY COURT MALL
637 Wheeling Avenue
Cambridge, Ohio
100 Booths 15,000 sq ft

HOURS: Daily 10-6 Sunday Noon-5
Closed: Easter, Thanksgiving, Christmas

Call for other holiday hours 740-432-4369

MARGARET LANE ANTIQUES
2 E. Main St. New Concord, OH 43762
Lynn Welker (740) 826-7414

Cambridge Glass Matching Service
Hours: Mon-Fri 10-12 AM, 1-5 PM
or by appointment

Our House Antiques
Linda & David Adams
Las Vegas, NV



702-838-1341 or
800-357-7169
Web: www.OurHouseAntiques.com
E-mail: David@OurHouseAntiques.com

Additional NCC Merchandise

Frosted Cobalt Scotty Dog Bookends



\$110/pair
Plus \$12 shipping & handling; sales tax if applicable.

Logo Patch



This attractive, embroidered Cambridge Logo Patch was produced by the Elegant Study Group to benefit NCC.

It measures 2" by 3.5" and can be ironed or sewn onto almost any fabric

\$5 each

Educational DVD's

by the Miami Valley Study Group

- ◆ **Cambridge Glass & All that Jazz**
Presented at the 2004 NCC Convention; it covers Cambridge Glass patented, introduced or featured in the years 1925 thru 1930. Runs 25 minutes. **\$13.00**
- ◆ **Cambridge Glass: Ladies and All**
Presented at the 2006 NCC Convention; covers the years 1931 and 1932. Runs 38 minutes. **\$18.00**
- ◆ **Special: Both DVD's for one low price**

\$29.00

*****Refer to Page 20 for Ordering Information*****

National Imperial Glass Collectors Society

31st Annual Convention, Show & Sale

May 31 - June 3, 2007 - St. Clairsville, Ohio

Glass Show and Sale on Saturday & Sunday

June 2-3

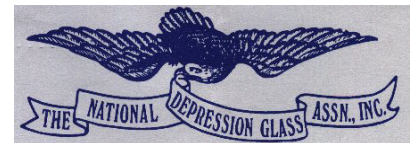
For information visit the NIGCS website at

www.imperialglass.org

E-mail: info@nigcs.org, or

write to NIGCS, PO Box 534, Bellaire, OH 53906

NDGA 2007



July 7-8, 2007

33rd Annual Convention Show & Sale

Modesto Centre Plaza

Modesto, CA 95354

www.NDGA.net

E-mail Ed: Convention@NDGA.net

National Cambridge Collectors, Inc.
PO Box 416
Cambridge OH 43725

website: www.cambridgeglass.org
e-mail: ncccystalball@charter.net
(not for address changes, please)

FIRST CLASS MAIL