



# Cambridge Crystal Ball

Published by the National Cambridge Collectors, Inc. as a resource which informs, invites and inspires people to encourage the continued preservation of the glass produced by the Cambridge Glass Company of Cambridge, Ohio for future generations.

Issue No. 474

January 2014

## A General Line Glass Show Returns to Ohio

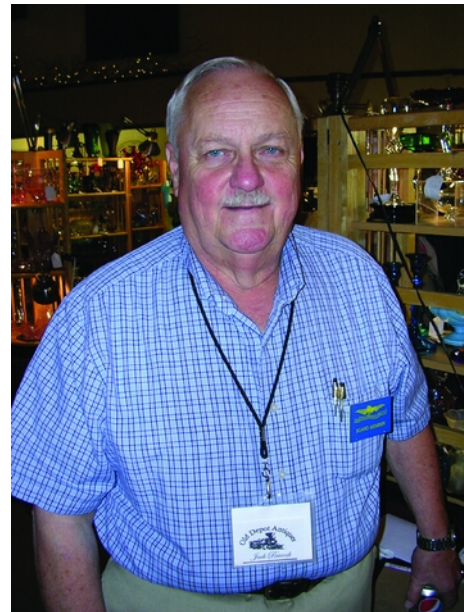
Much to the delight of glass collectors in Ohio, a new general-line glass show held its debut the weekend on November 9-10 in Tiffin, OH. Ten quality glass dealers from around the country displayed their inventories for everyone to enjoy. All of the major elegant glass companies were well represented, as well as, cut glass, pattern glass, and depression glass. This year's show was held at the Tiffin Civic Center in downtown Tiffin, but Show Chair Jack Peacock noted that next year's show will be held in a new location that will hold between 5 and 10 additional dealers.



L-R: Dave Adams, Linda Admas, Jack Thompson, Elaine Thompson and David Ray enjoy the show.

Cambridge glass show dealers Sandy Walker, Jack Peacock, Ed Sawicki, David & Linda Adams, and Jim and Leora Leasure were set up. Many beautiful pieces of Cambridge glass were available for sale. Some of these items included a Light Emerald Stratford Dolphin handled bowl, Amber Rosalie water pitcher, Windsor Blue shell candlesticks, large Peachblo Bunny Box, 3011 Topaz Nude hock, Peachblo Melon Boy, Light Emerald Wildflower candy box, crystal Caprice punch bowl, several nice pieces of Rose Point, and much more.

It has been nearly 10 years since Ohio, the former site of several major glass companies, hosted a general line glass show. Show Chair, Jack Peacock, was excited about the success of the inaugural show and is looking forward to next year.



Show Chair, Jack Peacock

**2014 NCC BENEFIT AUCTION LISTING  
COMMENCES ON PAGE 9**

# National Cambridge Collectors, Inc.

PO Box 416 Cambridge, OH 43725-0416

## Board of Directors

Cindy Arent	Ken Filippini	Larry Everett
Nancy Finley	Les Hansen	Millie Loucks
Freeman Moore	Mark Nye	David Ray
Doug Ingraham	Lynn Welker	Frank Wollenhaupt

## Officers

President	David Ray
Vice-President	Ken Filippini
Secretary	Nancy Finley
Treasurer	Millie Loucks
Sergeant-at-Arms	Mark Nye

Director of Strategic Planning  
 Director of Human Resources  
 Chair, Standards Committee

Rick Jones  
 David Ray  
 Sharon Miller  
 Larry Everett - Committee Member  
 Susan Everett - Committee Member  
 David Ray - Committee Member  
 Mike Strebler - Committee Member

## Member Services

### Vice President

Member Relations  
 Convention  
 Digital Media  
 Member Meetings  
 Study Groups

Les Hansen  
 (vacant) Director of Member Relations  
 Tarzan Deel - Membership Data-base Administrator  
 Diane Gary - Convention Director  
 Alex Citron - Manager of Facebook Operations  
 (vacant)  
 Jeannie Moore - Study Group Coordinator

### Development

### Vice President

Campaigns

Events

Larry Everett  
 Ken & Jane Filippini - Annual Fund Directors  
 Larry Everett - Director of the Heritage Society  
 Will & Bev Acord - Auction Managers  
 Lynn Welker - Auction Manager  
 Joy McFadden - Show Manager  
 Mary Beth Hackett - Show Manager  
 Larry & Susan Everett - Glass Dash Managers  
 Carl Beynon - Jeweler & Scotties Project Manager  
 Frank Wollenhaupt

### Education

### Vice President

Crystal Ball  
 Publications  
 Media Productions  
 Research  
 Programming  
 NCC History

Frank Wollenhaupt  
 Freeman Moore - Executive Editor  
 Mark Nye - Director of Publications  
 Dave Rankin - Director of Media Productions  
 Mark Nye - Archivist  
 Greg Vass - Director of Programming  
 Mark Nye - Archivist

### Museum

### Vice President

Public Operations

Facilities & Grounds  
 Collections  
 Merchandise Sales

Community Relations

Cindy Arent  
 Julie Davey - Docent  
 Gary Wiseman - Docent  
 Sandy Rohrbough - Docent  
 Betty Sivard - Docent  
 Carl Beynon - Director of Facilities  
 Lynn Welker - Director of Collections  
 Lynn Welker - Gift Shop Manager  
 Cindy Arent - Gift Shop Manager  
 Cindy Arent

### Administration

### Vice President

Accounting & Finance  
 Risk Management  
 Payroll  
 Information Technology  
 Legal

Millie Loucks  
 Lisa Neilson - Office Manager  
 (vacant)  
 (vacant)  
 David Adams - Webmaster  
 (vacant)

## ADDRESS CHANGES

Please send address changes to:  
 Membership - NCC  
 PO Box 416  
 Cambridge, OH 43725  
 or by e-mail to:  
[tarzandeel@gmail.com](mailto:tarzandeel@gmail.com)

## WEBSITES

- **NCC WEBSITE**  
[www.CambridgeGlass.org](http://www.CambridgeGlass.org)
- **MIAMI VALLEY STUDY GROUP WEBSITE**  
[www.mvsg.org](http://www.mvsg.org)

## CONTACTS

NCC Museum (phone)..... (740) 432-4245  
[nccglass@yahoo.com](mailto:nccglass@yahoo.com)  
 David Ray, President.....  
 e-mail: [westerville.sh@hotmail.com](mailto:westerville.sh@hotmail.com)  
 Nancy Finley, Secretary.....  
 e-mail: [jefinley@charter.net](mailto:jefinley@charter.net)

## The National Museum of Cambridge Glass



**Closed for the season**  
**- see you in April**  
**special hours listed on front page**



# PRESIDENT'S MESSAGE

## *Reflecting on 2013*

Over the past three years, I have used the January President's message to highlight some NCC's achievements for the past year. Although NCC's first major event of the year occurs in March, the responsibilities of the auction committee begin several months prior. Under the leadership of Jack and Elaine Thompson and Lynn Welker, the March Benefit Auction was a huge success. Many beautiful pieces of Cambridge glass were available for purchase and, with the help of an enthusiastic crowd, a new record of \$61,250 in total sales was set. The success of the March Auction is comprised of many factors, but the hard work and dedication of the Auction Committee is extremely important. After serving as Auction Directors for five years, Jack and Elaine Thompson have transferred their responsibilities to NCC's new Auction Directors, Will and Bev Acord. Will and Bev are active members of the Miami Valley Study Group and they, along with Lynn Welker, have compiled a very exciting auction listing for the 2014 Benefit Auction. Individual photographs of all consigned items can be viewed on the NCC website.

Shortly after arriving in Cambridge for the 2013 Annual Convention, my first stop was the National Museum of Cambridge Glass. Museum Director, Cindy Arent, greeted me at the door with much excitement. Cindy announced that Fleur de Lys Healey presented NCC with a generous gift to offset the cost for the resurfacing of the museum parking lot. The parking lot has been deteriorating for several years and needed to be resurfaced for safety purposes. Last fall, Diane Gary graciously accepted the position of Convention Director. 2013 marked the 40<sup>th</sup> anniversary of NCC. Along with the help of Member Services Director, Les Hansen, Diane designed and executed a very memorable convention. Each living member of NCC's original board of directors was invited to be our honored guest. NCC's first President, Charlie Upton, his wife Mary Alice, Loren and Virginia Yeakley, John Wolfe, and Francis and Anna Pavlov participated in the 40<sup>th</sup> anniversary celebration. In addition, outstanding educational programs led by Les Hansen (Carmen), Lynn and Martha Swearingen (Candlelight), and Frank Wollenhaupt, Larry Everett, and Dave Rankin (Refired Glass) helped complement the momentous celebration. In an effort to increase the number of educational events, Diane added four informal sessions where attendees discussed Rose Point (Grant & Dolores Giesler), Caprice (Ron & Halla Kotlarz), Swans (Jim & Nancy Finley), and Flower Frogs (Will & Bev Acord). Convention ended on Saturday evening with a game-show event where members of the audience were invited to share their knowledge about Cambridge glass. Throughout the evening, Alex Citron and Shelley Cole added many historical facts about NCC and the Cambridge Glass Company.

For the first time in several years, the Glass Show was extended to Sunday. Our goal was to make attending the show more convenient for people living in the Cambridge area. Although admission was

free on Sunday, few people attended. As a result, the 2014 glass show will be limited to Friday and Saturday. Articles containing additional details about the 2014 Annual Convention will appear in future issues of the Crystal Ball. Diane will be using the feedback she received from the convention survey to help create the 2014 schedule.

The theme of the November Program was "Opaque Colors from the 1920's". Theo's banquet room was filled with a sea of Cambridge color. Unlike transparent glass, opaque glass offers a bold consistent color without sophisticated lighting or special backgrounds. The glass was displayed chronologically starting with Azurite and ending with Pomona Green. The display incorporated a diverse group of examples capturing the attention of both the novice and advanced collector. As always, Lynn Welker entertained attendees with his broad knowledge of Cambridge glass as he carefully discussed more than 100 displayed items.

Earlier this summer, NCC was contacted about purchasing a small collection of Rose Point. Having never done this before, Cindy Arent and Lynn Welker carefully debated the proposal and concluded it would be a good investment for the gift shop. Knowing the glass was being purchased for resale, the owner agreed to sell the glass at a fair price. With Cindy's creative marketing strategy, gift shop sales are exceeding everyone's expectations. The Museum's Sample Room was converted into a sales room, so visitors to the museum could experience history by purchasing authentic Cambridge glass displayed on the original shelving used at the Cambridge Glass Showroom located in Cambridge, OH.

The generosity of our members inspires the board of directors to continue their hard work in making NCC a premier glass club. The 2013 Annual Fund was budgeted at \$48,500. I am pleased to report that current contributions have exceeded \$50,000. The Annual Fund is our most significant source of revenue and its success is critical for the longevity of the club and the museum. Each year since the inception of the Annual Fund, annual deposits have been made to the Endowment Fund which currently stands at \$251,000. At convention, a fundraiser for the endowment was developed and launched by the Elegant Glass Study Group. Because all of the glass was donated, 100% of the proceeds from the raffle will support the endowment. Tickets will continue to be sold through the 2014 convention where one winning ticket will be drawn. The goal of the raffle is to add \$25,000 to the endowment. I want to thank everyone who contributed to the 2013 Annual Fund and hope you will continue your support in 2014.

Happy New Year's!

David Ray  
[westervillesh@hotmail.com](mailto:westervillesh@hotmail.com)

# IT'S AUCTION TIME!

By Bev & Will Acord



We are excited about the wonderful selection of Cambridge glass in this year's auction to be held on Saturday, March 1, 2014. We will start the auction at 9:30 am with preview beginning at 8:30 am.

You can review the catalog included in this issue and visit [www.cambridgeglass.org](http://www.cambridgeglass.org) to view all the great photographs. We have a fantastic collection of group shots as well as individual shots of each lot.

We began preparations for the 2014 NCC Auction in August when consignors sent their proposed lists. There were many consignors who submitted almost 900 items to select from. In order to limit the auction to one day we narrowed the selection to around 425 items. That was one of the hardest parts of the process as there was so much wonderful glass to choose from. Those items that were not selected please hold until next year! Selections were made the first part of October and all the glass was delivered to Cambridge by the November quarterly meeting.

The next weekend we gathered all the boxes from storage and took them to the Pritchard Laughlin Civic Center where we had plenty of room to spread out to unpack. Out of the many pieces of glass only 3 items were broken during shipment and only a couple items were not Cambridge.

David Rankin set up his professional photo booths and began taking individual shots of each piece of glass as well as many group shots. We then repacked the glass and transported back to the museum where it will rest until the big day in March.

We would like to thank those who helped make our first time chairing this very important event go smoothly: Larry and Susan Everett, Frank and Vicki Wollenhaupt, David Rankin and Lynn Welker. And to all those who have so graciously offered their help and support for all the work it will take setting up the auction and working auction day, thank you as well. This cannot be done by just the Auction committee. And thanks to the consignors who provided all the wonderful glass. We couldn't have done it without you!



So start making your selections of the items you are going to bid on now! Make your reservations right away to join us for the auction, March 1<sup>st</sup> as well as the Friday night quarterly meeting and "Auction Preview" presented by Lynn Welker on February 28<sup>th</sup>.

This is one of NCC's most important fund raising activities. See you at the auction!

# Most Successful Museum Holiday Season Ever!

By Cindy Arent

This year the November and December holiday season was perhaps the most successful since we began operating on the weekends and for motorcoach groups eight years ago. In addition to the bus groups, the number of visitors on the weekends has doubled.

Just before the November Quarterly meeting we were invited by Mike Neilson to speak to the Cambridge Lions Club. We decided to try something different. Instead of just taking glass and the props for dressing people like glassworkers, museum volunteer Gary Wiseman did a first person interpretation of Arthur J. Bennett.

The Lions Club listened intently as Mr. Bennett talked about his company. Thanks to Mike Neilson, and the Cambridge Lions Club, for giving us the opportunity to spread the word about Cambridge Glass and the museum.

If you are familiar with the PBS drama, Downton Abbey, you would have enjoyed the first weekend of November as the museum hosted the new "Abbey Etiquette" program in the museum auditorium. Volunteers, dressed in their Downton inspired costumes, presented a program that explained not only the Cambridge Glass Company lines popular during that era, but also the proper utensils used during a six course dinner. The tables were set with Wildflower stemware for the formal place settings, engraved Croesus for the informal settings and beautiful Cambridge candelabras were placed in the center of each table. The cast included: Carl Beynon, Darren Swarts, Sharon Miller, Lindy Thaxton, Sally Slattery, Karen Treier and Cindy Arent.

The following weekend was the Dickens Victorian Village Queen Victoria weekend.

The Queen visited the museum during one of the motorcoach groups and on Sunday she arrived again to learn about The Cambridge Glass Company and knight Arthur J. Bennett for his accomplishments in glass manufacturing. Again, Mr. Bennett was portrayed by museum volunteer Gary Wiseman.

The Annual Museum Holiday Open House was held on Saturday of Thanksgiving weekend. That day was also the Ohio State/Michigan game and we were worried it would hurt attendance during the day. At 11:00 a.m. visitors started



Cambridge Lion and NCC Member, Mike Neilson, invited the museum staff to speak at the Lions Club meeting about Cambridge Glass and museum programming. Shown L-R are: Mike Neilson, Cindy Arent, Sandi Rohrbough and Gary Wiseman.



Downton Abbey Butler, Darren Swarts and Mrs. Patmore, played by Lindy Thaxton watch as Sharon Miller demonstrates the proper placement of stemware in a formal place setting.

## Most Successful Museum Holiday Season Ever! - continued

arriving and it was the best Holiday Open House we have ever had. There were at least 40 people in the museum at all times throughout the day. Many, many visitors learned about Cambridge Glass and purchased special gifts.

The museum was featured in the Cleveland Plain Dealer newspaper on Sunday, November 10<sup>th</sup>. We have had so many visitors from the Cleveland area as a result of the article. There have also been calls to the museum for information, and Cambridge Glass Christmas ornaments were ordered and shipped to happy customers.

Thank you to the following museum volunteers and docents that greeted each holiday visitor and motorcoach group with a smile: Carl Beynon, Rich Bennett, Sharon Bachna, Betty Davis, Larry and Susan Everett, Reggie Gerko, Nancy Guegold, Sharon Miller, Margene Osterberg, Sally Slattery, Marybelle Teters, Lindy Thaxton, Karen Treier, Gary Wiseman, Sandi Rohrbough, Cindy Arent and Betty Sivard.

Plans are already being made for new programs for 2014. If you are watching a movie and see Cambridge Glass in the film. Please let us know the name of the movie and what piece of glass you saw in the film. Cambridge Glass was used as props in Hollywood movies long ago, and can still be seen today. An effort is being made to collect the names of as many movies as possible that show Cambridge Glass. We are working with tour operators to possibly arrange a new programing option, "Cambridge Glass Goes Hollywood"! Your help would be appreciated.

The museum staff and volunteers would like to thank NCC members and friends for your support during the 2013 season and look forward to seeing you in 2014!

Best Wishes for a Happy and Healthy New Year!



The cast of Abbey Etiquette included; standing (L-R) Cindy Arent, Karen Treier, Darren Swarts, Sharon Miller, Sally Slattery and Carl Beynon. Seated are Bryan and Jenna Conaway who attended one of the sessions at the museum. Absent from the photo is Lindy Thaxton.



Enjoying the Queen Victoria event at the museum are: seated (L-R) Jonett Haberfield, Dickens Victorian Village; Queen Victoria (Anne Boyd of Galveston, TX); Arthur J. Bennett (Gary Wiseman); and Cindy Arent. Standing (L-R) are: Sir Eugene of Cambridge; Bob Ley (City of Cambridge Director of Public Service); Sue Ley; Lindy Thaxton; Marybelle Teters; Karen Treier; Sharon Miller; Betty Sivard; Sandi Rohrbough and Sharon Bachna.

# Convention 2014

## The Ladies of Cambridge

Obviously a considerable amount of interest exists for the 2014 NCC Convention because I have been asked repeatedly "What is the theme of the 2014 Convention?" At the November Quarterly Meeting, the theme for the convention was announced and will be "The Ladies of Cambridge". We will be featuring the etchings of these ladies: Diane, Elaine, Gloria, Marjorie, and Portia. Programs will include information on their history, and who they are named after. Hopefully, our dealers at the Glass Show and the Glass Dash will have a nice array of these items for sale as well.

Some things will be different this year. The convention will run from Wednesday, June 25, 2014 thru Saturday June 28, 2014. The event will open on Wednesday evening with a fun picnic, followed by a program on one of the etchings.

A new event for convention will be an auction on Thursday. This will be a mini-version of the Benefit Auction in March and will showcase approximately 200 lots of Cambridge glass. Glass will be accepted for the auction on Thursday morning, and the auction will take place on Thursday afternoon. The exact times and details for the auction will be forthcoming.

Friday will feature more educational programs on the lady etchings. The Glass Show will open on Friday afternoon and will open again on Saturday at 11 a.m. The glass show will not continue on Sunday this year. The Glass Dash will again be on Saturday morning. And, as usual, the showcases in the Galleria of the Pritchard-Laughlin Center will feature Cambridge Glass and this year will focus on the lady etchings.

The banquet will be on Friday evening and we are in the process of scheduling a speaker for this evening. The table centerpieces were such a hit last year, so I am requesting those of you that would like to do a centerpiece for one of the tables this year to please contact Jeannie Moore or me. Jeannie's E-mail address is [jeannie\\_moore@verizon.net](mailto:jeannie_moore@verizon.net). My E-mail address is [dhgary@msn.com](mailto:dhgary@msn.com).

Everyone had such a good time last year at convention, and we are striving to make this year's convention just as exciting and festive with a few surprises thrown in. A complete convention schedule will appear in upcoming issues of the Crystal Ball along with the registration form.

Please feel free to contact me with questions or suggestions.

### ***Auction to be held during convention***

**There will be an exciting addition to this year's convention. We will provide another opportunity to view and buy/sell some great glass.**

**The auction will be held at the Pritchard Laughlin Convention Center beginning at noon on Thursday June 26<sup>th</sup>. Approximately 200 lots will be accepted. Consignors can submit their list and photos of glass to Larry Everett ([heartlamps@sbcglobal.net](mailto:heartlamps@sbcglobal.net)) by April 1, 2014. Glass must be delivered at 8:00 a.m. on auction day (June 26<sup>th</sup>), unpacked, inspected, and numbered before the auction preview begins at 11:00 a.m. Consignors are encouraged to submit a minimum of ten quality lots for this inaugural auction event. Additional information will be available in next month's Crystal Ball.**

# National Cambridge Collectors, Inc.

## 2014 Benefit Auction

Saturday, March 1, 2014

Pritchard-Laughlin Civic Center

7033 Glenn Highway • US 40, West • Cambridge, Ohio

### INFORMATION

Preview at 8:30 a.m. Auction starts at 9:30 a.m.

Craig Connelly, Auctioneer Admission: \$2.00

All glass in the auction is guaranteed to be Cambridge. The Auction Managers have checked all glass carefully for verification and damage. Any piece purchased should be examined immediately by the purchaser, and returned within five items if not as represented. All damages are indicated in this catalog; last minute changes or addenda will be announced by the Auction Managers immediately prior to the auction. If no color is indicated herein, the item is crystal. There are no reserves and no buyer's premiums are charged.

**TERMS:** Payment is expected in cash the day of the sale; checks will be accepted with proper identification.

**CATALOG:** Lots will be sold in the order printed herein. A number in parenthesis ( ) at the end of a listing indicates the number of that item available for sale. The auctioneer will announce whether such multiples are being sold individually or as a lot. If multiple items are being sold individually, a winning bidder may take any number available. If the catalog indicates "set," "pair" or a similar term, the lot is sold as such.

**ABSENTEE BIDS:** Anyone wishing to bid absentee, may do so by mailing their bids to the Auction Committee at the address below. All bids must be received by the end of Thursday prior to the auction to be eligible, so please allow enough time for the postal service to do its thing. **They must contain all the following information:**

- List showing the lots desired and the maximum bid for each lot.
- Valid Credit Card, VISA & MasterCard accepted. The following is required for a proper credit card transaction:
  1. Exact name as it appears on the card
  2. Expiration date
  3. 3-Digit Security Code on the back
  4. Exact address credit card statement is billed to
  5. Phone number
- Address where winning lot(s) are to be shipped to.

Bids will be executed secretly and a winning bidder will pay only the final auction price. If there are multiple absentee bids for the same lot, bidding will commence on the floor at the second highest bid, effectively shutting out all but the highest absentee bidder.

**Shipping:** Items can be shipped to street addresses only. WE CANNOT SHIP TO P.O. BOXES. If you are the successful bidder, your credit card will be charged as follows:

**Final auction price + 5% transaction fee + cost of shipping.**

**MAILING ADDRESS:** All absentee bids must be mailed to:

NCC Auction Managers  
P.O. Box 416  
Cambridge, OH 43725

**BIDS MUST BE RECEIVED BY  
THURSDAY, FEBRUARY 27, 2014 TO BE ELIGIBLE**

**QUARTERLY MEETING:** The Quarterly Meeting of the NCC will be held on Friday, February 28 at 7:30 p.m. A preview of the auction glass will be presented. Show & Tell glass is also welcome at the meeting. All are welcome!

For additional copies of the catalog listing as well as detailed information on the entire auction, please visit the website at [www.cambridgeglass.org](http://www.cambridgeglass.org) under **Annual Auction**.

**Additional copies of this catalog are included with admission to the auction.**



## 2014 NCC Benefit Auction Listing

1	_____	1528	Smoke 10" Vase
2	_____	3797/78	Ebon Cambridge Square 9-1/2" Vase
3	_____	3500/88	Carmen Torchere, Plain foot
4	_____	1284	Lt. Emerald 10", Crystal foot Vase
5	_____	3500/119	Rams Head 13" ftd Punch Bowl, Rare
6	_____	3011/29	Amber Statuesque Mint Dish
7	_____	3011/7	Carmen Statuesque 4-1/2 oz Claret
8	_____	3011	Royal Blue Statuesque 7" Cupped Comport
9	_____	3122	Heatherbloom 9 oz goblet, optic
10	_____	3095	Lt. Emerald foot and stem Goblet, etched 727
11	_____	851	Decagon Ice Pail, Scotty Dog Enamel, signed
12	_____	851	Decagon Ice Pail, Ski Scene Enamel, with tongs
13	_____	56	Azurite 9-1/2" Ftd. Bowl, Red Enamel Trim
14	_____	1070 & 1084	Peach-blo #1070 26 oz Pinch Decanter, (6) Shots (one has chip), #1084 13" Tray, Signed
15	_____	498	Lt. Emerald 8 oz Tumbler, etched Golf Scene
16	_____	#1	Carmen to Amberina muddlers (2)
17	_____	1042	6-1/2" Swan, Style I, Signed
18	_____	3130	Lt. Emerald 8 oz Goblet, Green Enamel Encrusted #731 Rosalie, (Unusual)
19	_____	867	Willow Blue Decagon Creamer, Blue Enamel Encrusted #731 Rosalie
20	_____	636	Ebony 9-1/2" Candlestick, gold trim, etched 738, partial factory label on bottom
21	_____	173	Pomona Green 12" x 9" Oval Center Handled Sandwich Tray
22	_____	98	Jade 5" 3 part candy dish and cover
23	_____	1309	Crown Tuscan 5" Vase, etched Portia, gold encrusted w/Crown Tuscan mark
24	_____	1315	5" Rabbit Box and Cover
25	_____	9403	12 oz Tumbler, Yale Enamel
26	_____	21	Ebony Everglade 7-1/2" Vase (rectangular top), Satin, 2 pin head nicks
27	_____	1955	Sunset 14 oz Tumbler
28	_____	730	Lt. Emerald 1/2 lb Candy Box and Cover, etched Cleo
29	_____	174	9 oz Syrup etched Portia, Metal Cover
30	_____	1371	Amethyst Bridge Hound, Cambridge Label
31	_____	1382	14 oz Square Decanter w/stopper etched #761 Valencia (Unusual)
32	_____	3011/8	Amethyst Statuesque 4-1/2 oz Sauterne
33	_____	W87	Milk 10" Urn and Cover
34	_____	1349	12" bowl, etched Chintz #1, 4 ftd.
35	_____	1442	Lyre two light candelabra with 2-4 lock bobeches and prisms (Single)
36	_____		Crystal Set of Doorknobs unusual, plain type
37	_____	1402/35	Tally-Ho 12 oz Stein, original hinged lid, marked Collins and Wright, patent
38	_____	1066	"Charcoal" 1 oz cordial w/gold stem, Cambridge label (RARE)
39	_____	3450	Amethyst Nautilus 1 oz cordial
40	_____	3	Carmen Everglade 2-light Candlesticks (pair)
41	_____	1352	Forest Green Handled Frog Vase, no detail (Hard to Find)
42	_____	3011/13	Amethyst Statuesque 1 oz Brandy
43	_____	3400/13	Comport 6-1/2" 4 ftd. Gold Encrusted Rose Point
44	_____	3200	12" Punch Bowl, Cut Wild Rose with foot and 8 cups (Set)
45	_____	851	Ebony Decagon Ice Pail w/ gold banding at top Wheeling Decorating, gold handle
46	_____	851	Royal Blue Decagon Ice Pail, Signed
47	_____	278	Amber 11" Ftd Vase, etched Betty, Gold Trim
48	_____	32	Primrose 10-1/2" Bowl, Black Enamel Trim
49	_____	135	Helio 10" Cheese and Cracker set, Worn Gold Trim
50	_____	191 1/2	Primrose Large Ginger Jar Lamp
51	_____	559	8-1/2" plate, Nankin Green Enamel Encrusted #715 Willow etching
52	_____	3130	7 oz Tall Sherbet etched Rose Point, (Unusual stem)
53	_____	388 & 390	Ebony 4" and 6" ashtrays w/silver overlay (silver worn), signed (2)
54	_____	P577	8" Horn of Plenty

55	_____	SS16	Crown Tuscan 7" Seashell Comport Charleton Harbor Scene
56	_____	#8	8-1/2" Everglade 3-ftd bowl, Satin, silver trim
57	_____	244	10-1/2" Service Plate, Blue Enamel Encrusted #715 Willow Etching
58	_____	4	Pomona Green ftd. Creamer
59	_____	309	Primrose 4 1/2" vase, Grind Flaw on Top
60	_____	9403	12 oz Tumbler, Princeton Enamel, Chip
61	_____	320	7 oz Old Fashion, USC Enamel
62	_____	9403	12 oz Tumbler, Century of Progress Enamel (Rare)
63	_____	P384	Pristine Oval 11" Bowl etched Daffodil
64	_____	P728	5-Piece Ashtray Set, etched Rose Point
65	_____	3109	6 oz Hollow Stem Champagne, Etched Rose Point (RARE)
66	_____	1066	7" Ivy Ball, Etched Rose Point (fleabite at opening) (Hard to Find)
67	_____		Azurite Perfume Lamp with black metal base and original wiring
68	_____	1554	Small Cornucopia Centerpiece 11-1/2" x 6" high
69	_____		Topaz 8 oz Dog Bottle, No Cap
70	_____		Topaz 8 oz Cat Bottle, No Cap
71	_____	3900/117	20 oz Jug etched Chantilly
72	_____	3750	1 oz Cordial, R.E. Eng. Harvest
73	_____	851	Decagon Ice Pail, R.C.Eng. Laurel Wreath, signed
74	_____	1	Carmen 4-1/2" muddler, shades to Amberina
75	_____	3011/5	Forest Green Statuesque 4 oz Hoch
76	_____	3011/7	Heatherbloom Statuesque 4-1/2 oz Claret, (pinhead nick)
77	_____	3077	Amber 3 oz ftd tumblers etched Cleo (4)
78	_____	851	Carmen Decagon Ice Pail, Signed
79	_____	851	Peach-blo Decagon Ice Pail, etched Cleo, Signed
80	_____	1239	Amethyst 13-1/2" Vase, Crystal Keyhole stem and foot
81	_____	95	Azurite 1 lb Candy Jar and Cover, pits on edge of foot
82	_____	437	Jade 9-1/2" Pair Candlesticks, Showroom Label
83	_____	3111	Tall Sherbet etched Candlelight (8)
84	_____	603	Carmen 4" coasters (6)
85	_____	1040	Crown Tuscan 3" Swan, Style III
86	_____	1402/100	Tally Ho Cocktail, R.C.Eng. #690 blue and lavender flashing (Unusual)
87	_____	244	Lt. Emerald 10-1/2" Service (Dinner) Plates, etched 703 Florentine (4)
88	_____	556	Lt. Emerald 8" Plates etched 704 (4)
89	_____	933	Lt. Emerald Cups, etched 704, and Saucers, etched 520, signed (4)
90	_____	3400/55	Amber Cream Soup, etched Brettone
91	_____	1917/361	Ivory 10" center handled sandwich tray (Version 2)
92	_____	1405	16 oz Beer Mug, "Here's Lookin' at You", Enamel, (2 Large Chips)
93	_____	P496	Pristine Table Architecture Candlesticks (Pr), Nick on both, Color Tinge (Hard to Find)
94	_____	7966	1 oz Cordials, etched 752 Diane (8)
95	_____	156	Azurite 8" Plate, Gold Encrusted etched 519
96	_____	244	Hunt Scene 10-1/2" Dinner Plate, Gold Encrusted, Cobalt Enamel on Back, Slight Scratch
97	_____	1528	Smoke Crackle 10-1/2" Bud Vase (Unusual)
98	_____	3105	Pressed Rose Point 1 oz Cordial
99	_____	3400/92	Rose Point 2-1/2 oz Whiskey
100	_____	1917/151	Ebony 11-1/2" Service Plate, Rockwell Sterling Silver "Leaping Gazelles & Medallions
101	_____	1222	Turkey and Cover
102	_____	1042	Ebony 8-1/2" Swan, Style I, signed
103	_____	3450	Amethyst 84 oz Nautilus Jug - Crystal handle
104	_____	3400/4	(2) 12" Bowls showing etched/gold encrusting process w/original descriptive labels, etched Rose Point, (EXTREMELY RARE (SET)
105	_____	W60	Milk Martha Washington 32 oz Water Jug
106	_____	883	Hunt Scene Ashtrays (2)
107	_____	1590	Twin Hurricane Lamp w/Rose Point Shades, Chip on one Boboche, locks ground on candle stick (Unusual)
108	_____	2653	Nearcut Ribbon Tankard, (marked Nearcut)
109	_____	3011/13	Moonlight Blue Statuesque 1 oz Brandy

110	_____	6B	Mardi Gras Rose Bowl 6" (RARE)
111	_____	3011/9	Pink Statuesque 3 oz Cocktail
112	_____	3123	Peach-blo Goblet, Aero Optic, etched #731 Rosalie, has chip
113	_____	693/3000	2 piece canapé set with footed 3 oz cocktail gold encrusted golfer
114	_____	851	Amber Decagon Ice Pail, etched Diane, Signed
115	_____	851	Peach-blo Decagon Ice Pail, Unidentified Etching 26, Signed
116	_____	1044	10-1/2" Swan, Style I, signed
117	_____		Rubina 8-1/4" across, Honeycomb 8-1/2" Tall Comport
118	_____	179	Jade 7-3/4" x 10" Wide Vase, Sponged Gold
119	_____	3575	Regency Goblet etched Diane (2)
120	_____	P101	Pristine 32 oz Cocktail Shaker, R.C. Eng 758 Lexington
121	_____	198	Cologne, Golden Showers Treatment, stopper with dauber (Rare)
122	_____	9	Milk Mt. Vernon 8" Urn and Cover, Milk #W77
123	_____	944	Creamer, etched Rose Point
124	_____	3400/38	Carmen 80 oz Ball Jug, with Carmen Handle
125	_____	3011	Amethyst Statuesque Cigarette Box & 2 ash trays (Set), Nicks on Lid
126	_____	3011/2	Carmen Statuesque Table Goblet
127	_____	P511	Pristine 2 Lite Ball Candlestick (Rare)
128	_____	P512	Pristine 3 Lite Ball Candlestick (Rare)
129	_____	V134	Virginian 10-1/2" Cake Salver
130	_____	3400/7	Amber 5-1/2" Cheese Comport, etched Rose Point (Unusual)
131	_____	3500	Amber 1 oz Cordial, Crystal Stem and Foot
132	_____	3077	Gold Krystol 1 oz Cordial, etched Cleo
133	_____	2970/392	Gothic 5-1/2 oz Comb. Auto Saucer Ice Cream and Wafer Tray
134	_____	1381	Royal Blue 28 oz bar bottles (3), sterling decor Rye/Gin/Scotch, in Tantalus holder (minus one stopper)
135	_____	972	Willow Blue Decagon 11" 2-hdld plate with #534 engraving, Scratches
136	_____	2651	Nearcut Feather Salver (Cake Stand)
137	_____	3400/38	Carmen 12 oz Tumblers (4)
138	_____	1126	Willow Blue 16" Everglade Bowl (Buffalo Hunt)
139	_____	1111	Heron 12" Flower Figure
140	_____	3143/18	Moonlight Blue 5 3/8" Gyro Optic Comport
141	_____	3011/2	Heatherbloom Statuesque Table Goblet
142	_____	3011/9	Amethyst Statuesque 3 oz Cocktail (Cambridge Label)
143	_____	851	Lt. Emerald Decagon Ice Pail, etched Cleo, Signed
144	_____	3400/156	Amethyst 8-pc Liquor Set, Tray (3500/112), 12 oz Decanter, #1371 1 oz Cordials (6)
145	_____	1917/361	Pomona Green 10" Round Center Handled Sandwich Tray (version 2)
146	_____	402	Forest Green 12" Vase
147	_____	1130	Crown Tuscan Nautilus Vase Style Lamp
148	_____	3011/40	Crown Tuscan Flying Lady Fruit Bowl w/ Charleton Gardenia decoration, trim wear
149	_____	693/3000	Ebony Canapé Plate, 3 oz Crystal Cocktail, Sterling Rooster decoration on both
150	_____	32	Lt. Emerald 11" Console Bowl and pair candlesticks, 3-1/2", etched 704 (Set)
151	_____	124	Lt. Emerald 68 oz jug, with lid, etched Tulip, Line in handle
152	_____	882	Ebony Tobacco Humidor 4-1/2" diameter, etched 729, No Top Cover
153	_____	710	Lt. Emerald Pen Tray, Letter Holder, Pin Tray, Gold Encrusted Dresden Rose (Set), Chip on Pen Tray, slight Gold wear on Letter Holder
154	_____	3	Lt. Emerald 2-Light Everglade Candlestick (1)
155	_____	3011	Statuesque 7" Cupped Comport, etched Diane (Hard to Find)
156	_____	3075	Bluebell 1 oz Cordial, Optic
157	_____	3011	Carmen Statuesque Cigarette Box and Cover
158	_____	3130	1 oz Cordial, etched Gloria
159	_____	3500	1 oz Cordial, Etched Valencia
160	_____	1234	Carmen 12" Vase, Crystal Keyhole Stem and Foot
161	_____		Cobalt (Early) 8" paste mold vase
162	_____	1137	Blue jay 5-1/2" Flower Figure
163	_____	1594	Aurora (Blue II) 8" Candlesticks (pair)

164	_____	518-1/2 Draped Lady Radio Lamp, original square Ebony base, no cord, no harm nicks inside base, (Extremely Rare)
165	_____	2351 Nearcut 2 piece 10" Punch Bowl
166	_____	3400/91 Crown Tuscan 8" 3 part relish, Gold Encrusted Rose Point, Cambridge Label
167	_____	3575 LaRosa, Moonlight Blue and Gold Krystal Regency Cocktails (3)
168	_____	3450 Amethyst Nautilus 40 oz Decanter and (6) 2-1/2 oz Tumblers (small chips on stopper)
169	_____	3400/30 9-1/2" 2 Handled Keyhole Ftd Bowl
170	_____	243 Amethyst Caprice 6" Diameter Vase, 7-1/2 Tall
171	_____	183 Moonlight Blue Caprice 80 oz Ball Jug w/Ice Lip
172	_____	131 Moonlight Blue Caprice 8" Low Footed Plate
173	_____	124 Moonlight Blue Caprice 8-1/2" Celery/relish, 3-compt
174	_____	62 Moonlight Blue Caprice 12" Belled bowl, 4-ftd
175	_____	122 Moonlight Blue Caprice 8" Relish, 3-compt
176	_____	204 Moonlight Blue Caprice Cigarette holder, triangle
177	_____	132 Moonlight Blue Caprice 6" Bonbon, ftd
178	_____	200 Moonlight Blue Caprice Cocktail glasses (4)
179	_____	172 Moonlight Blue 6" Caprice spade
180	_____	117 Moonlight Blue Caprice Oil and Vinegar cruets, 3 oz, 1 stopper Bruised
181	_____	103 Moonlight Blue Caprice 12" Relish
182	_____	3011/13 Carmen Statuesque 1 oz Brandy with Satin Stem, Line in Arm
183	_____	3106 Cocktail etched Lily of the Valley (2)
184	_____	320 Amethyst 7 oz Old Fashion Cocktails sham, with Crystal #1 muddlers, Signed (4)
185	_____	94 Azurite 7" x 8 1/4" Sweet Pea Vase, Gold Band Overlay D619, Version 2
186	_____	3121 7" Candlestick w/Bobeche, Cambridge Label
187	_____	Rubina Block Optic Comport, 6" low footed, scalloped edge, good color
188	_____	3500/91 6" 2 handled Square Beverage Tray, etched Rose Point (hard to find)
189	_____	107 Lt. Emerald jug with lid, etched Water Lily, minor nicks on inside rim of lid
190	_____	1957/121 Carmen Sonata 5-1/2" Candlesticks (pair)
191	_____	Jade Ball Stem Candlesticks, 9", Gold Splash (Pair)
192	_____	P577 Moonlight Blue 8" Horn of Plenty
193	_____	3400/91 Gold Krystal 8" 3-Part Relish, etched Wildflower
194	_____	1299 Crown Tuscan 11" Footed Vase, Gold Encrusted Chintz (acid signed)
195	_____	222 Helio 6" Candlesticks, Gold Encrusted etched #527 Rose (pair), Mint Gold
196	_____	1125 Mystic Blue 15-1/2" Everglade Flip Bowl, Buffalo Hunt
197	_____	3011 Statuesque open Cigarette Box (Tall Stem), No Lid, Flakes on Breast
198	_____	3011/12 Amber Statuesque 3 oz Wine, Satin Stem and Crystal Foot
199	_____	84 Primrose 10" vases w/gold banding décor (pair)
200	_____	660 Peach-blo Vanity Tray
201	_____	3400/97 2 oz ball shaped perfume etched Rose Point w/dauber stopper (RARE)
202	_____	937 Peach-blo 68 oz Jug, Ice Lipped, etched #523 Chrysanthemum
203	_____	Mulberry Honeycomb Ftd. Candy and Cover
204	_____	SS47 Pearl Mist 9-1/2" Seashell Cornucopia
205	_____	Windsor Blue Daisy and Button hat, made by John Deganheart from his Mold at the Cambridge Factory
206	_____	106 Mulberry 66 oz Jug and Cover
207	_____	Tuxedo/8 Carmen Tuxedo 8 oz Footed Tumblers (8)
208	_____	1130 Ebony Nautilus 11" ftd Vase w/Sterling Overlay (leans slightly)
209	_____	3400/71 Amethyst 3" 4 ftd Nut Cups (4)
210	_____	1349 Amethyst 12" crimped bowl, 4 ftd, Signed
211	_____	2766 Thistle Nearcut 8-1/2" Tall Deep Comport
212	_____	3500/27 Amber Rams Head 8" Square Bowl, Cambridge Label
213	_____	2800/234 Community 1 gallon Ewer & Basin
214	_____	1917/361 Azurite Center handled Sandwich Tray, gold encrusted 524 "Betty" (version 1)
215	_____	3115 Topaz 9 oz Goblet, Willow Blue stem and foot
216	_____	3121/2 5 3/8" Low Comport, etched Rose Point, (hard to find)
217	_____	1402/94 Royal Blue Tally Ho 12" Celery
218	_____	1528 Pistachio Vase engraved Star Light, Cambridge Label

219	_____	1528	Smoke Vase, R.C.Eng. Wedding Rings
220	_____	1041	Ebony 4-1/2" Swan with 1050 Candlestick Holder (Pair)
221	_____	W98	Milk 4-1/2" Swan Candlestick Holder (Pair)
222	_____	1041	Peach-blo 4-1/2" Swan with 1050 Candlestick Holder (Pair), Signed
223	_____	1041	Lt. Emerald 4-1/2" Swan with 1050 Candlestick Holder (Pair), Signed
224	_____	3104	4-1/2 oz Hochs (2)
225	_____	3011/2	Carmen Statuesque Table Goblet, Satin Stem and Crystal Foot
226	_____	3011	Amethyst Statuesque 7" Flared Comport
227	_____	3011/29	Statuesque 4" Mint Dish, Flaw in Arm
228	_____	509	Peach-blo 9" 2 Kid flower holder
229	_____	54	Carmen Mount Vernon 7" flared Vase, Crack in Vase
230	_____	6004	Crown Tuscan 6" ftd. Vase, Gold Encrusted Rose Point
231	_____	4	Azurite 7-3/4" bowl, Gold Band Overlay D610
232	_____	993	12" Bowl, 4 Ftd, etched Lily of the Valley
233	_____	65	Ivory 9-1/2" Doric Column Candlesticks, Version 2 (match Rams Head), pair
234	_____	509 1/2	Peach-blo Satin 7" Two Kid, Figurine only
235	_____	3011/14	Amethyst Statuesque 1 oz Cordial
236	_____	1617	Hurricane Lamp etched Rose Point chimney, Martha non-etched base
237	_____	3400/100	76 oz jug, etched Portia, w/ 3400/100, (6) 14 oz tumblers etched Portia (Set)
238	_____	3400/141	76 oz jug, etched Wildflower, Low Handle
239	_____	3400/92	32 oz Ball Jug Decanter w/(6) 2-1/2oz Barrels, D/992 Orange & White Enamel Rings
240	_____	1402/39	Tally Ho 34 oz handled Decanter/Stopper, Satin/Sterling Décor
241	_____	3075	Peach-blo 12 oz Tumbler, Gold Encrusted D/805 Imperial Hunt (2)
242	_____	732	Pomona Green refectory bowl, 4 footed, 2 Pin Head Flakes. Inside edges have been ground
243	_____	1043	Crown Tuscan 8-1/2" Swan, Charleton Gardenia decoration, Style III, Charleton Label
244	_____	3900/41	Sugar and Creamer, etched Rose Point (Pair)
245	_____	7606	6 oz Tall Sherbets, etched Marjorie (8)
246	_____	668	6" Plates, etched Marjorie w/Cambridge Labels (6)
247	_____	121	Helio 3-1/2" Basket
248	_____	94	Ebony 7" x 8 1/4" Sweet Pea Vase, etched 519 gold band overlay
249	_____	3500/74	Crown Tuscan 4" Ram's Head Candle Sticks (Pair)
250	_____	462	Lobster Plate 11-1/2" x 9-1/2"
251	_____	3400/93	Carmen 5-1/2" Ivy Ball
252	_____	103	2 pc Nite Set - After Market Gold Filled etched Adams
253	_____	MW3	Heatherbloom Martha Washington 9" 1 Lite Candlestick (Pr)
254	_____	40	Candlestick Like Miniature Stove (RARE) (As is)
255	_____	3011/61	Royal Blue Statuesque Candlestick (1), No Boboche
256	_____	3011/14	Carmen Statuesque 1 oz Cordial
257	_____	3400/119	Carmen 12 oz Ball Decanter (Line in Handle), Crystal Stopper and (6) #1341 Carmen 1 oz Cordials
258	_____	1311	Heatherbloom 4" Ashtray, Crystal Foot
259	_____	3122	Blown Finger Bowls, etched Diane (4)
260	_____	1040	Royal Blue 3" Swan, Style II (signed)
261	_____	518	Peach-blo 8-1/2" Frosted Draped Lady Flower Figure
262	_____	2630/41	7" Plymouth "Near Cut" Low handled Basket, Signed
263	_____	1066/2	Heatherbloom Optic Aurora Blown Comport (Rare)
264	_____	210	Azurite Community covered humidor, Unusual, Lid Ground Underneath
265	_____	SS18	Windsor Blue 10" Seashell Bowl, 3 toed, signed
266	_____	47	Ivory 6 3/4" Mayonnaise
267	_____	623/8701	Amber 5 pc Bridge set unidentified etching #82 Water Lily & Pad
268	_____	1202	Heatherbloom 12 oz Georgian Tumbler (shows wear)
269	_____		Rubina 10-1/2" Block Optic Vase, lots of Blue
270	_____	3400/103	6 1/2" Globe Vase etched Elaine
271	_____	3011	Forest Green Statuesque Tall Cigarette Box
272	_____	3011	Forest Green Statuesque Ash Tray
273	_____	3121	1 oz Cordial etched Wildflower
274	_____	3400/70	Gold Krystol 3-1/2" Cranberry, etched Gloria

275	_____	1070	Pink Crackle Pinch Decanter (plain stopper) (6) #321 1-1/2 oz Tumblers
276	_____	745	Peach-blo "Springtime" 12-1/2" Bowl with 4-1/2" Candlesticks, satin detail sticks only
277	_____	P55	6-1/2" Low Comport, Gold Encrusted Wildflower
278	_____	5	Rubina 7" Honeycomb Bowl, Good Color, signed, some scratches
279	_____	3400/38	Gold Krystol 80 oz Optic Ball Jug, Gold Encrusted Portia
280	_____	1114	Bashful Charlotte 6" Figure Flower Holder
281	_____	130	LaRosa 7" Comport Caprice Alpine
282	_____	1358	Caprice 3-Lite Candelabrum w/Bobeches
283	_____	198	Amber Cologne, gold overlay decor, complete dauber stopper
284	_____	490	Pristine 2-1/2" Candleholders, (pair)
285	_____	1614	7" Trumpet Hurricane (Shade) only, etched Wildflower
286	_____	518	8-1/2" Draped Lady Flower Figure, Czech Glass Flowers with Lights, electrified
287	_____	3400/119	Royal Blue 12 oz Cordial Decanter, keyhole stopper
288	_____	3500	Carmen Rose Point Footed Finger Bowl (Crack on Base only), Gold Encrusted (RARE)
289	_____	3500	Carmen Rose Point 12 oz ftd Ice Tea, Tall Bowl, Gold Encrusted, Trim Wear
290	_____	315	Violet Jenny Lind Covered Candy
291	_____	512	Rose Lady Flower Frog
292	_____	1402/100	Carmen Tally Ho 1 oz Cordial, Sterling Silver Overlay, Crystal Stem & Foot
293	_____	3400/69	Amber After-Dinner Cup and Saucer, etched Apple Blossom
294	_____	1312	Gold Krystol Cigarette Box and Cover, etched Diane, Crystal Foot (Unusual)
295	_____	3400/11	Lt. Emerald 3-Piece Mayonnaise Set, etched Gloria, Lt. Emerald Ladle (signed)
296	_____	1114	Peach-blo 6-1/2" Bashful Charlotte
297	_____	1192	Carmen 6" candlestick, Lotus Sterling Silver Décor (not done by Cambridge)
298	_____	1405, 595	Beer Mugs: (2) #595 12 oz Carmen and Forrest Green, (2) #1405 16 oz Amber and Madeira, Forrest Green has large chip
299	_____	3011/5	Carmen Statuesque Hoch, Color Tinge to Stem
300	_____		Ivory 6 1/2" atomizer, plain, no bulb, missing cord
301	_____	1008	Jade (Lt Emerald Satin) 12" Springtime/Everglade Vase
302	_____	380	Lt. Emerald 10" Club Luncheon Plate, etched #732
303	_____	170	Peach-blo 9 oz Syrup with Metal lid, etched #704
304	_____	3900/118	Amethyst 32 oz jug (juice size)
305	_____	3900/24	Rose Point Dinner Plates 10-1/2" (4)
306	_____	1313	Gold Krystol w/Crystal stem and foot 6" Keyhole Ashtray
307	_____	3575	Stradivari Bell, Cambridge label
308	_____	7606	5-1/2 oz café parfait, etched Marjorie (2)
309	_____	3011/8	Royal Blue Statuesque Sauterne, small chip on foot and rough edge
310	_____	119	Amethyst 7" Basket, 12" high
311	_____	3797/65	Cambridge Square 12" Oval Bowl
312	_____	532	Ebony 6" Comport, Gold Charleton Rose Décor, Charleton Label
313	_____	169	Lt. Emerald 3-pc Mayo Set, Unknown Gold Band Overlay Border etched
314	_____	20	Everglade 10-1/2" Vase Lamp, highlight satin
315	_____	1633	5" Peg Vase, etched Chantilly (2)
316	_____	200/1	Primrose 10" candlesticks and #32 10-1/2" bowl, Gold Encrusted (Set)
317	_____	SS32	Windsor Blue Shell w/snuffer & card holder (1) and Windsor Blue Shell w/card holder (1), 2-3/4" 3-ftd
318	_____	66	Moonlight Blue Caprice Alpine 13" ftd, crimped bowl
319	_____	3121	Rose Point etched 7 oz Low Sherbets (3)
320	_____	112	Mulberry Nappy, 5" Open work flower border, unusual
321	_____		Nearcut Lamp, Has been cut down and a Non Cambridge Ferrule added
322	_____	3500/77	4-1/2" Candy box and cover, etched Elaine
323	_____	1402/36	Royal Blue Tally Ho 14 oz Handled Stein
324	_____	SS 31	Windsor Blue Seashell 8" oval dish, 4 toed, signed
325	_____	107	Rubina 76 oz Pitcher, No Lid
326	_____	3130/2	12 oz Footed Ice Tea, Blue Cloud - Cambridge Label
327	_____	414	Peach-blo Cigar Jar w/Lid
328	_____	1222	Amber Turkey w/Cover, Chips inside lid
329	_____	1043	Lt. Emerald 8-1/2" Swan, Style I, Signed

330	_____	1341	(6) 1 oz Harlequin Mushroom Shot Cordials on Crystal 3500 Center Handled Tray
331	_____	1302	9" Vase, Globe on Keyhole Stem, etched Gloria
332	_____	813	Peach-blo Sugar Shaker, etched Cleo, Glass Top
333	_____	3400/77	Salt and Pepper Shakers, etched Diane, Peach Blo Foot (Pr)
334	_____	3500/57	Amber 8" 3-Part Candy Box and Cover, Gold Encrusted Portia, Mint Gold
335	_____	1301	10" Vase, etched Lorna, Red Enamel Trim (Unusual)
336	_____	121	Primrose Plainware 3-1/2" Basket
337	_____	3104	Carmen 3-1/2 oz Cocktail, Crystal Stem and Foot
338	_____	3400/972	oz Perfume etched Portia, Complete Dauber Stopper
339	_____	3400/94	3-1/2" Puff Box, etched Portia
340	_____	3400/132	9" Vase with Side Opening, etched Portia (Rare)
341	_____	1261	Salad Dressing Bottle and Stopper, etched Portia (inside stopper nick)
342	_____	1431	Amethyst 8" Bulb Vase
343	_____	532	Lt. Emerald 6" Tall Comport, etched #517 Early Wildflower
344	_____	147	8 oz Marmalade and Cover, etched Portia
345	_____	518	Moonlight Blue 8-1/2" Draped Lady Flower Figure
346	_____	882	Ebony 4" Tobacco Humidor w/moistener, Gold Deco Florentine Center Medallion on Lid, with Gold Band on Lid and Body, Gold Wear
347	_____	1630	Rubina 12 oz Tumbler, no optic
348	_____	3122	Gold Krystol 1 oz Cordial etched Diane
349	_____	3130	Gold Krystol 1 oz Cordial, etched Apple Blossom
350	_____	3035	Heatherbloom 1 oz Cordial, Optic
351	_____	7967	1 oz Cordial, etched Dawn
352	_____	3126	Gold Krystol 1 oz Brandy, Optic
353	_____		Helio 4 1/2" paneled atomizer , gold décor, worn, no bulb
354	_____	3700	1 oz Cordials, R.C.Eng. Montrose (3)
355	_____	3575	Stradivari Tall Sherbet, etched Portia, top edge repair
356	_____	1330	Carmen 5" Sweet Pea Vase, stained inside
357	_____	607	3-1/2" x 4-1/2" Intaglio Dog Cigarette Box
358	_____	3500/57	Moonlight Blue 8" - 3 compartment candy box & cover
359	_____	550	Lt. Emerald 7-pc Handled Lemonade Set, Sponged Acid, Mint Gold Trim
360	_____	463	Amber 17" Dolphin Head Oval Footed Bowl
361	_____	300	Peach-blo 6" 3 footed Covered Candy, Satin Interior, etched #725, Gold Trim
362	_____		12 Pieces Cambridge Original Paperwork: Checks, Ware Cards, etc.
363	_____	3035	Carmen Low Sherbets (4)
364	_____	2906	13" Draped Lady Flower Figure, Early Tall Base
365	_____	402	Peach-blo 12" Vase, etched 741
366	_____	1402/139	Royal Blue Tally-Ho Top Hat 11" x 9"
367	_____	1337	Cigarette Holder with Ash Tray Foot, etched Rose Point
368	_____	1956	Catalog & 1958 Price List, few pages cut
369	_____	3400/107	Royal Blue Jug, No Cover
370	_____	1221	Swan Punch Bowl, 12 cups, Base (Set)
371	_____	1412	Amethyst 8" Floating Rose Bowl, Diamond Optic, Cambridge Label (Unusual)
372	_____	SS48	Windsor Blue Seashell Belled 9" Vase, Repaired Top
373	_____	1017	Pink Triangular Card Table Corner, Patent Mark
374	_____	7606	1 oz Brandy etched Marjorie
375	_____	103	7" 3-Part Candy Box and Cover, D/1063 Talisman Rose Gold Decorated
376	_____	1242	Royal Blue 10" Vase
377	_____	1305	Forest Green 10-1/2" Vase, Globe on Crystal Keyhole Stem and Foot
378	_____	109	Peach-blo Dolphin 8" Candlesticks, Flat Round Base (pair)
379	_____	1283	Gold Krystol 8" Vase, etched Gloria, Amber Foot (Hard to Find)
380	_____	1238	Crown Tuscan 12-1/4" Keyhole Vase, Gold Encrusted Portia
381	_____	1301	Crown Tuscan 10" Footed Vase, Gold Encrusted D/995 Chintz #2, Acid Signed
382	_____	3500/42	Crown Tuscan 12" Covered Urn Gold Encrusted Portia
383	_____	2780	Strawberry Nearcut 7" Handled Squat Basket, Signed
384	_____	169	Pomona Green Plainware Mayonnaise and Under plate
385	_____		Helio 6" vase

386	_____	2667	Nearcut novelty 2-handled 4 oz jug w/metal & wood bail, No stopper
387	_____	1393	Amber Cocktail Mixer with glass stirrer
388	_____	3112	Royal Blue/Crystal Tall Sherbets (6)
389	_____	SS44	Crown Tuscan 6" Flower Center, Ftd (Snail)
390	_____	1506/2	Crown Tuscan 5" Novelty Basket, signed
391	_____	119	Forest Green 7" Basket, 10-1/2" Tall, Crystal Handle, Signed
392	_____	1042	Lt. Emerald 6-1/2" Swan, Style I, Signed
393	_____	2631	Nearcut Tall Cracker Jar (lid roughness) and Squat Cracker Jar - Donation
394	_____	SS110	Seashell 4-1/2" Seafood Cocktail w/dolphin stems (4)
395	_____	2780	Nearcut Child's Punch Set w/5 matching cups (not signed, but mold marks)
396	_____	46	Stratford 9" Ftd Vase, Flared
397	_____	2354	Ebony 10" Ftd. Vase, etched #743, Gold Trim
398	_____	1238	Amethyst 12" Vase, Keyhole Stem
399	_____	1917/88	Amber 1 lb candy jar with D/750 Gold Band Overlay
400	_____	3500/41	Royal Blue Gadroon 10" Urn and Cover
401	_____		Trivet etched Rose Point, glass only, no silver around edge
402	_____	1568	11" 5-lite Candelabrum (one lock-on bobèche) with #1432 Arm
403	_____	3575	Amber, Amethyst, Gold Krystal and Pistachio Regency Cordials (4) - Donation
404	_____	62	Moonlight Blue Alpine Caprice 12-1/2" Belled Bowl, 4 ftd - Donation
405	_____	13	Carmen Mt. Vernon 91, 86 oz Jug (Repair on handle) with (5) #84 14 oz Steins (Set), signed
406	_____	3500/25	Royal Blue Rams Head Bowl
407	_____	83	Ivory Paste Mold Vase, 8", Shaded Enamel & Daisies
408	_____	507	Peach-blo 2pc Urn Jar and Cover-etched 725
409	_____	6	Ebony Everglade 2-Lite Candelabrum, Crystal Vases
410	_____	157	7 oz Footed Marmalade and Cover, etched Portia
411	_____	SS 31	Crown Tuscan 8" Oval Shell, 4 Toed-Charleton Rose pattern (gold wear on rim)
412	_____	496	Harlequin Set of (8) 1 oz Little Joes – Tahoe Blue, Odd Green, Amethyst, Moonlight Blue, Pink, Mocha, Pistachio, Gold Krystal
413	_____	3450	Amethyst Nautilus Salt & Pepper on Crystal Tray (set)
414	_____	1242	Amethyst 10" Vase, Cambridge Label
415	_____	402	Amethyst 12" Vase
416	_____	55	Mulberry 8" footed bowl, 6", Gold Band Overlay etched 527 Rose
417	_____	3400/154	Forest Green 76 oz Doulton Jug with Pinch Sides
418	_____	122	Ebony 8-1/2" (across) x 13" Tall Basket, Large Size
419	_____	2651	Nearcut Feather 14" Handled Beverage Tray, Signed
420	_____	1402/71	Carmen Tally-Ho 10" 2 handled Pan Bowl
421	_____	3400/55	Carmen Cream Soups with Saucers (10)
422	_____	1238	12" Keyhole Footed Vase Gold Encrusted Wildflower, Trim wear on Base
423	_____	P308	7" Star Candy and Cover
424	_____	2780	Thistle Nearcut 8-1/2" C Shape (Belled) Bowl, fair condition
425	_____	2780	Thistle Nearcut 8-1/2" D Shape (Flared Round) Bowl
426	_____	3075/2	Amber 28 oz Decanter gold encrusted E703
427	_____	1705	Ice Pail, etched Rose Point, (very hard to find)
428	_____	3011/09	Amethyst Statuesque Cocktail with Crown Tuscan Stem





by Larry Everett

This report is provided to keep members up with what's happening on the world's largest Internet Auction site. It is not meant as an educational tool, nor as a pricing guide, and we cannot guarantee the accuracy of listings herein.

Greetings from eBay land! Thanks to my many friends that send news to me at: [heartlamps@sbcglobal.net](mailto:heartlamps@sbcglobal.net). Happy New Year! Susan and I hope you found at least one of the following "goodies" under your tree.

**Rose Point:**

A beautiful 2 part mayonnaise trimmed top and bottom with gleaming Wallace Sterling Silver was quickly packed in Santa's sleigh for \$150. A perfect No. 103 Guest Room Jug and Tumbler quickly flew to \$356.65. An extremely rare Pristine 225 - 9 1/2" Blown 2-compartment bowl ended at \$650.

**Statuesque:**

A Carmen covered cigarette box with cover stopped at \$405.99. A Shell (SS11) comport in the very hard to find Windsor Blue lit up the night at \$659. A crystal Roemer, etched Vichy was the Christmas star at \$900.

**Other Etchings:**

A hard to find 315 - 28 oz. decanter with Chintz #1 etching sold for \$69. A pair of Heatherbloom 3035 - 2 1/2 oz. footed tumblers toasted in the new year for \$47.89. A pair of stems in Pink Gloria (3135-10 oz. goblet, and a 3122-3-oz. cocktail) made \$147. Another pair of Gold Krystol stems (3125 tall sherbet, and a #3125 12-oz. footed tumbler) in the very hard to find Deauville etching sold for \$211.49. A beautiful No. 851 - Ice Pail, D/971-S Silver Encrusted Gloria chilled out at \$225. A very hard to find Portia decanter set with the rare Portia serving tray was toasted for \$408.99. The rare Diane 1408 - 60 oz. Cocktail Churn was all mixed up at \$563.39. A Royal Blue 2 handled bowl GE Chintz was served for \$427.50. Another ugly ball jug (Willow Blue with Apple Blossom etching) met its maker for \$477.66. Hi Jeanie! This last item I think everyone had marked. It was a gorgeous 1020 - 34 oz. Cocktail Shaker with the 2-lip Chrome Top, beautifully enameled in the very desirable D/986 Wise, Otherwise, Theorize, Harmonize decoration. This beauty went to a new home for \$635.

**Miscellaneous:**

A nice Jade (Frosted Lt. Emerald) 1115 - 11" Bashful Charlotte Figure Flower Holder posed for \$311.45. A rare Violet Everglade #23 - 5" Vase ended at \$145. A beautiful Azurite 12" paste mold vase with the very nice Green enameled D185 (Element 2) decoration went for \$364 (Note: the top rim was damaged). The last item out of Santa's bag is a beauty! A Rubina No. 550 - 48 oz. Pitcher with exceptional color made someone's day for \$977.55.

Happy Hunting and Best Wishes for 2014!



Shell (SS11) comport in Windsor Blue



No. 103 Guest Room Jug and Tumbler



1020 - 34 oz. Cocktail Shaker with the 2-lip Chrome Top, beautifully enameled in the very desirable D/986 Wise, Otherwise, Theorize, Harmonize decoration



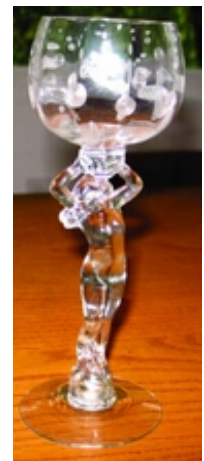
Royal Blue 2 handled bowl GE Chintz



Violet Everglade #23 - 5" Vase



Rubina No. 550 - 48 oz. Pitcher



Crystal Roemer, etched Vichy

## Museum Forever Raffle - #1 of a Series

# Every Pitcher Tells a Story

By Rick Jones

This past June, the Elegant Glass Study Group of NJ and Pennsylvania announced the launch of the Museum Forever Endowment Campaign and our first major initiative – the **Museum Forever Raffle**. Members of our Study Group, and selected Friends around the country, have donated the pieces of glass that will be awarded this June at our Annual Convention when the winner's name is selected.

To date, we are already nearly 25% of the way to our goal of raising \$25,000 this year. Now comes the big push as we enter 2014 and aggressively seek to sell out all 500 of our \$50 tickets. And, we need your help to do this!

For the next few months, a member of our Study Group will write an article for the Crystal Ball that discusses a piece they have donated to the auction and why this piece was meaningful to them. They'll describe why they feel so passionately in supporting our Museum Forever Endowment Campaign so that our great National Museum of Cambridge Glass will shine brightly in Cambridge long after we are all gone.

I'm first up.



The piece I want to lead with is the Caprice Doulton Pitcher that Cindy and I have donated to the raffle. We have donated a few items to the raffle, but the Doulton holds special meaning. To explain why, I borrowed, and slightly twisted, the name of a classic Rod Stewart album – Every Picture Tells a Story, which featured Maggie May and Reason to Believe.

The Doulton pitcher is widely considered the crown jewel for Caprice collectors. While seen quite a bit lately in Crystal, it still is very elusive in Moonlight. And, it's even rarer to find it with the Alpine treatment. I have only seen one of them, which I had the pleasure to own, and have heard of one more.

This pitcher came to the Jones' house in 1988 from the collection of John and Lenore McNabb. John was instrumental in elevating us from an everyday collector to passionate, some might say "crazed, money be damned, WE NEED TO OWN THAT" collectors. It elevated collecting from a "like" to a "love". The Crystal Doulton was the first one we owned. We later added to that one in Moonlight from Dan Tucker, Moonlight Alpine from Kelvin Moore and the Crystal Alpine from Debbie Maggard. We also have it in Amethyst and Mocha, both in a Farber holder, but I can no longer remember who we got them from.

John McNabb helped every Caprice collector in my "early days." Well before the development of Mark Nye's landmark book on Caprice, John shared with me a compilation he developed from multiple factory catalogues. He had assembled the whole Caprice repertoire in numerical order from the #1 10 ounce goblet to candlesticks in the 1500 series. It was invaluable.

As we collected, we used post-it notes to mark what pieces in John's catalog that we had and in what colors and treatments. We also marked quantities, as we were putting together first, eight place settings, and then, twelve. We took this compilation to every antique show we went to and every glass show around the country.

Gratefully, we received John's permission to share this catalog with others and boy did we! We shared it with fellow collectors and major glass dealers like Joe and Florence Solito, Kevin Kiley and Cliff McNeil. Through this, they were able to find more great pieces and identify them.

And ultimately, we "completed" our Caprice collection (if one can EVER say that!) and had an illustration of every piece - including some experimental pieces that are now shown in NCC's Caprice book.

But, before there was a Caprice book, there was John McNabb. He has long since passed away, but we will always remember him and honor his memory by donating this Crystal Doulton Pitcher to the NCC Museum Forever Raffle Campaign. May it continue to benefit collectors and our museum for decades to come.



Glass included in the 2013 Museum Forever Raffle.

<b>MUSEUM FOREVER RAFFLE</b>	
All proceeds will go to the	
National Museum of Cambridge Glass Endowment Fund	
Prize: LARGE LOT OF QUALITY CAMBRIDGE GLASS	
for pictures go to CambridgeGlass.org	
Drawing:	JUNE 27th 2014
at the Friday Convention Reception	
Winner need not be present	
	Ticket sales limited to 500
<b>\$50.00 Donation</b>	<b>\$50.00</b>

Name: \_\_\_\_\_  
 Address: \_\_\_\_\_  
 Address: \_\_\_\_\_  
 Phone #: \_\_\_\_\_  
 E-Mail: \_\_\_\_\_

## Introducing the new Crystal Ball Editor, Freeman Moore

Wow! Can you believe that Helen Klemko has been editor of the Crystal Ball for nearly seven years? No wonder she's ready for a break. And that's where I come in. I have accepted the challenge of following in her footsteps as your editor for the Crystal Ball. Why me? I recently retired from my full time career in software engineering at Raytheon. NCC relies on the support of volunteers and I have the expertise and time available. A large portion of my professional work involved developing, reviewing and delivering technical training classes. I'm used to the challenges of large documents as well as working with collaborators and deadlines. I've been a member of NCC since 1996, and was first elected to the Board of Directors in 2009. Jeannie and I live near Dallas Texas and promote NCC at several events throughout the year. My goal for volunteering is to ensure that you, the Friends of Cambridge, continue to receive the high quality product you've come to expect. Of course, your articles, stories and other information are always appreciated. Thanks for your support, Freeman Moore. [editor@cambridgeglass.org](mailto:editor@cambridgeglass.org)

*Tickets can be purchased at the Museum or by sending a check made payable to National Cambridge Collectors Inc. to PO Box 416, Cambridge, Ohio 43725-0416. Indicate on your envelope "Museum Forever Raffle". Please include a stamped, self addressed envelope with your name & return address and the ticket stub will be mailed back to you. Thank you for your support.*

### NCC welcomes the following new members

Paul Berube	Rhode Island
Vicki & Mickey Smith	Virginia
Paul DeVenzio	Washington

**CHAPTER 14 - “A Window of Hope”**

*The continuing story that you are about to read is a fictional novel created for the enjoyment of our Friends. Of course it is always possible that some of the items described may surface – never say never.*

(In the last chapter, Steve and I created a list of items to purchase from The Cambridge Glass Factory showrooms.)

As we’re walking to the front door of the building, I told Steve that I wanted to look at the pencil dog that Diane had given me. As I pulled the dog from my pocket, a metal Cambridge Glass Cafeteria token hit the floor. I had forgotten to tell Steve that I’d found it in the glass dump. It was on the ground just before the stone-block doorway in the hillside. Usually, when I find something this unusual, I call and tell someone right away. My adrenalin was at an all-time high as I entered the stone-block chamber and I’d completely forgotten to mention this to him.

Steve reached down to retrieve the tin token and said, “This is a 5-cent token. I don’t think you have this one at home.” He was right; all I had at home were two one-cent and one 10-cent tokens. As he handed me the token, brilliant flashes of light appeared from nowhere and everything went totally quiet in this huge factory. As we moved one step forward, the brilliant light disappeared. We were actually standing in front of the same doorway that had sent me ahead in time before. I told Steve, “I’m not exactly sure how this is happening, but I hope that together we can figure this out.” “Dad, this is huge. Wouldn’t it be interesting if we could find a way to control this time travel?” It would, but for now, we couldn’t. My thoughts were only on one thing, and that’s being on a personal tour of the Cambridge Glass factory with Martha and A.J. Bennett.

As we walked through the doorway, we saw the front office with many ladies motioning us to come in further. As before, Diane was there to greet us and stated that Mr. and Mrs. Bennett hadn’t arrived yet and that she would answer any questions we might have.

“Steve, your father has already signed our register. We would like you to do the same.” As Steve signs his name, he leans over to me and said, “Look at what’s above my name.” To our amazement, it was the initials M.M.M that we had seen earlier. Diane, seeing our interest in those initials, said, “That’s the girl you had seen yesterday in the hallway. Even though she’s worked here several years, she thinks it’s cute to sign the register every day.”

As we walked in further, I noticed a huge metal trophy that looked very familiar. Steve and I agreed that it was the trophy that’s in the research room of the NCC Museum. Diane said that the large, 23” trophy was presented on May 2, 1927 to Mr. Bennett by his sales organization for the 25<sup>th</sup> anniversary of the company. Initially, Mr. Bennett had it in his personal office, but later decided it should be on display for all to see in the main entrance.

Looking toward an open office area, I noticed several workers’ desks with glass paperweights on them. I asked Diane if they were personalized like the glass-framed nameplates that we had seen yesterday. “You’ve got a good eye, Mr. Bennett, and yes, most of them have been personalized. One particular worker here at the factory by the name of Charles Degenhart creates most of our paperweights. He also can make sidewalk address markers and paperweight gravestone markers.” Diane, the gravestone markers I have seen at Northwood Cemetery, as well as the one I have at home, are beautiful.” “Well, it’s an art to create these pieces and Mr. Bennett feels that Mr. Degenhart is the best in the industry.”

Along the back entrance wall, we noticed a large rectangular showcase with a variety of different types of Cambridge glassware. Diane said they were a few sample pieces that the company had made back in the teens and earlier. I don’t know how I missed those showcases the first time I had been here. It was probably due to the excitement at the offer she’d made to browse the company’s gift shop. “Are you saying you got a little bit excited, Dad?” That’s the understatement of the year.

## “A Window of Hope” - continued

Diane left us to look around on our own and said she would be back soon. The pieces in this case were the type you hardly ever see in the future. First was a “Colonial” pattern children’s toy tea set in crystal and several paperweights. Other items in crystal were kerosene lamps, fish globes, a jelly jar, a molasses can, bird seed cups, eye cups, glass dippers, a fruit jar with bail, figural candy containers, a Mother Goose baby bottle, funnels, a crucifix, measuring cups, several Near Cut covered candies, cracker jars, gas and electric shades, and beer mugs.

At the end of the case were real showstoppers. We saw an ebony flat-top turtle flower block, and two outstanding Near Cut carnival tankards. The first was a 1/2-gallon Fernland pattern in blue carnival, and the second was a purple carnival fish tankard. These two tankards were fantastic with great color. Near this were several pomona vases and one pomona cuspidor. Something that really stood out on each one of these pieces were paper stickers indicating the items were known as “Sateen o’ Pearl” with the word Cambridge underneath. I told Steve that I’d done some research on Cambridge Glass about six or eight years ago and had come across this reference. Years before, my aunt and uncle, Harold and Judy Bennett, told me that they knew the man that had decorated pomona/Satin o’ Pearl. His name was Leroy Prichard and he had confirmed this was made in 1917 and was never a production item, because of the extreme cost. He did indicate that in January of 1918 that the very few pieces that were made were on display at the Fort Pitt Hotel in Pittsburgh.

As I looked toward the west wall, I noticed a beautiful large colored-paned glass window. The 15 panes of glass had different Cambridge Glass colors and each had its own design. With lights shining toward the window and natural light from the outside, it was a sun ray of beauty.

Diane returned as we were admiring the window and I told her how totally unexpected it was. She replied, “Our designers and management never cease to amaze us. Some of the cuttings and etchings you will recognize, while others are personal favorites. For example, one pane is a hand cutting of our Guernsey County Courthouse, and I must say it is truly a work of art and personally made by Mr. Herschel Hancock. The window has drawn so much attention that management decided to do the same to the two larger windows in our display rooms. The different glass panes with designs are to show our customers the absolute beauty of Cambridge glassware inside and out.”

The combinations were outstanding! We saw heatherbloom Diane, amber Apple Blossom, topaz classic, light emerald Dragon, blue bell peacock, carmen Portia, blue 1 Mah Jongg tiles, gold krystal Rosalie, peach blo Windsor Castle, royal blue Gloria, amethyst Butterflies, forest green Ye Old Ivy, willow blue with hand-cut Constellation, and a beautiful rubina pane with a large cut Triangle C mark in the middle. Diane said that the combination panes that have been made have been received well by the public and that several department store managers were having a shining success with them. “Some see it as a ‘ray of hope,’ if you know what I mean.” “Well, Diane, I don’t know why anyone wouldn’t want a few of these panes in their homes or businesses. This should sell well for years to come.” Diane said, “Mr. Hancock likes the idea so well that he’s decided that the clear skylights in the cutting department on the top floor will be hand cut. He hasn’t decided what the cuttings will be or who will cut them, but when they’re finished, it will give that department a tremendous amount of pride.” Steve said, “It sounds like a stairway to heaven to me, Diane.” She said, “That is so true. I’ll have to tell Mr. Hancock. Matter of fact, I’ll let you tell him yourself, Steve. I’m sure you will be in that department again!

(To Be Continued)

## NCC Events

**2014 NCC Auction  
Saturday March 1, 2014**

\*\*\*\*\*

**2014 Convention  
June 25-28, 2014**

\*\*\*\*\*

**November Meeting & Educational Program  
November 8, 2014**

## DEALER DIRECTORY

### PATTON HOUSE ANTIQUES

Specializing in Glass  
Heisey • Cambridge • Fostoria • Duncan

Factory Antique Mall  
Verona, VA off I-81. Exit 227

The Daniels, Box 547 Louisa, VA 23093  
(540) 967-1181

### Cambridge Nudes - Dave Small

[HTTP://CambridgeNudes.com](http://CambridgeNudes.com)

3011 Cambridge Statuesque

Buy, Sell, Trade

[davesmall@mac.com](mailto:davesmall@mac.com)

281-376-3686



### Connecting Buyers & Sellers!

Tell us what you are looking for  
and we help find it.

**CAMBRIDGE GLASS.US**

P. Snyder 740-601-6018

E-Mail and Find Your Glass!

[psnyder@cambridgeglass.us](mailto:psnyder@cambridgeglass.us)

[www.cambridgeglass.us](http://www.cambridgeglass.us)

When you are searching for Cambridge glass, email  
your request and it is emailed to all members and  
dealers.

P. Snyder, 1500 Edgewood Dr., Circleville, Ohio 43113

### Joanne & Janine Bender

Specializing in Depression Era Glassware  
We Buy & Sell

PO Box 1007  
Pebble Beach, CA 93953

831-647-9957

[jjdbender@aol.com](mailto:jjdbender@aol.com)

831-647-9949

[www.benderglass.com](http://www.benderglass.com)

### J & L Treasures

Specializing in Depression Glass  
Heisey, Cambridge, Fostoria, Morgantown,  
Tiffin, etc.

Linda Kilburn  
PO Box 1257  
Burlington, CT 06013

860-673-4088 (Answering machine - leave message)

### Ohio Valley Antique Mall

7285 Dixie Highway (Route 4)  
Fairfield, OH 45014

Cincinnati's Largest Multi-Dealer Antique Mall  
Hours: DAILY 9:00 a.m. - 9:00 p.m.

513-874-7855

[www.ohiovalleyantiquemall.com](http://www.ohiovalleyantiquemall.com)

[cfaxon@ohiovalleyantiques.com](mailto:cfaxon@ohiovalleyantiques.com)

## Glass Shows

### January 18-19, 2014

Cartersville Looking Glass Show & Sale  
Cartersville, GA  
972-672-6213  
[meyerantiques@juno.com](mailto:meyerantiques@juno.com)  
[www.meyershows.com](http://www.meyershows.com)

### January 25-26, 2014

Sanlando DG Show & Sale  
Sanford, FL  
Call: 407-298-3355  
[allisonglassworks.com/millie.html](http://allisonglassworks.com/millie.html)

### January 25-26, 2014

Portland Rain of Glass Show & Sale  
Hillsboro, Oregon  
503-901-0505  
[www.rainofglass.com](http://www.rainofglass.com)

### February 8-9, 2014

Austin Looking Glass Show & Sale  
(former San Antonio Show & Sale)  
Austin, Texas  
972-672-6213  
[meyerantiques@juno.com](mailto:meyerantiques@juno.com)  
[www.meyershows.com](http://www.meyershows.com)

### February 8-9, 2014

South Florida Depression Glass Club's 40th  
American Glass, Pottery, Dinnerware Show & Sale  
Pompano Beach, FL  
305-884-0335  
[www.sfdgc.com](http://www.sfdgc.com)

### February 22, 2014

Green River Glass Show & Sale  
Kent, Washington  
253-8520-5250

### February 14-16, 2014

Houston Depression Glass & Show & Sale  
Rosenberg, Texas  
[www.maxmillerantiques.com](http://www.maxmillerantiques.com)  
713-410-4780

### February 22 - 23, 2014

Arkansas Glasshoppers Depression Era Glass  
Little Rock, Arkansas  
[bgmarglass@sbcglobal.net](mailto:bgmarglass@sbcglobal.net) or [orglasshoppers@aol.com](mailto:orglasshoppers@aol.com)  
501-868-4969

### March 21-22, 2014

Heart of America DG & Pottery Show  
Independence, MO  
816-308-7495  
[hoagc.net@domainsbyproxy.com](mailto:hoagc.net@domainsbyproxy.com)  
[www.hoagc.org](http://www.hoagc.org)

# DEALER DIRECTORY

**Dealer Directory - \$24 for 12-months, size limited by box (see below). Includes listing on NCC website.**

## Advertising Rates:

1/8 page \$15      1/4 page \$20  
1/2 page \$30      Full page \$50  
(plus \$5 per photograph)

Electronic submissions should be emailed to:

[ncccrystalball@gmail.net](mailto:ncccrystalball@gmail.net)

Use Word. Mailed submissions and all payments should go to PO Box 416, Cambridge, OH 43725. Deadline is 10th of preceding month. Ads must be paid in advance. Show listings are FREE; send info to PO Box or e-mail address 60 days before event.

### ALADDIN LAMP BOOKS

Aladdin Electric Lamps  
SB, 229 pp., \$24.95 to C.Collectors PP.  
J.W. "Bill" Courter  
brtknight@aol.com  
550 Pioneer Ln. Phone 270-488-2116  
Calvert City, KY 42029

### Max Miller

Elegant Glassware • Books • Fiesta  
...and more  
THE MARKET PLACE  
(713) 467-0450 - BUS 10910 OLD KATY RD.  
(713) 461-1708 - RES HOUSTON TX 77043  
MMXGLASS@aol.com

### Cheshire Cat Antiques

Specializing in elegant depression to mid-century era glass and vintage kitchen glass.

Francee Boches > 305-884-0335  
fboches@cheshirecatantiques.com

Pull up a Mouse!  
Shop 24 hrs a day at  
[cheshirecatantiques.com](http://cheshirecatantiques.com)



### BAKER FAMILY MUSEUM

805 CUMBERLAND ST.  
CALDWELL, OHIO 43724  
740-732-6410

[bakermuseumnellbaker@msn.com](mailto:bakermuseumnellbaker@msn.com)

Wed & Thurs 9-4; Fri - Sat 9-5

## Classified Ads - Reach over 1,000 avid collectors of Cambridge Glass

### CRYSTAL LADY

1817 Vinton St. Omaha, NE 68108  
Bill, Joann and Marcie Hagerty  
Shop 402-341-0643 Home 402-391-6730

Specializing in Elegant Glass & Collectibles  
[www.crystalladyantiques.com](http://www.crystalladyantiques.com)

Glen & Carolyn Robinson  
White Rose Antiques  
Specializing in Depression Era Glassware

2454 McFarland Road  
York, SC 29745

803-684-5685  
[gandcrobinson@aol.com](mailto:gandcrobinson@aol.com)  
[whiteroseglassware.com](http://whiteroseglassware.com)

### CRYSTALLINE COLORS

Cambridge • Fostoria • Elegant Glass  
Penny Court Mall, Cambridge - 2 booths  
Medina Antique Mall  
Medina, OH (I-74, exit 218)

Lynne R. Franks 216-661-7382

### GLASS FROM THE PAST

Maureen Gillis



[www.glassfromthepast1.com](http://www.glassfromthepast1.com)  
email: [maureen@glassfromthepast1.com](mailto:maureen@glassfromthepast1.com)

### Cherished Collectibles

Shopping 24 hours in our online store  
Glassware, Figurines, Collectors' Plates

[www.cherishedcollectibles.com](http://www.cherishedcollectibles.com)  
Elegant and Depression Era Glass

### TWEAK COLLECTIBLES

Specializing in Elegant Glass  
BUY & SELL  
WANTED: CAMBRIDGE TURKEYS  
417-742-3653  
[btummons@aol.com](mailto:btummons@aol.com)

### VIRTUALATTIC AT THE GLASS CHALET

SPECIALIZING IN ELEGANT DEPRESSION ERA GLASS

Sandra L. Bridwell-Walker PO Box 726  
Phone: 740-492-5022 Newcomerstown, OH 43832

Sandy's Cell: [www.virtualattic.com](http://www.virtualattic.com)  
817-559-0328 [virtualattic@sbcglobal.net](mailto:virtualattic@sbcglobal.net)  
[theglasschalet@sbcglobal.net](mailto:theglasschalet@sbcglobal.net)

Daugherty's Antiques  
Jerry and Shirley  
Antiques & Collectibles-Mostly Glass

[www.daughertys-antiques.com](http://www.daughertys-antiques.com)  
email: [sdaugh2515@daughertys-antiques.com](mailto:sdaugh2515@daughertys-antiques.com)

Shows & Mail Orders 2515 Cheshire North  
402-423-7426 (evenings) Lincoln, NE 68512

THE GLASS HOUSE ANTIQUE MALL  
Furniture, Pottery, Glass  
Antiques and Collectibles  
I-70 Exit 146, East on SR 40

8825 E. Pike  
Norwich OH 43767 TEL 740-872-3799

### Milbra's Crystal Buy & Sell

Replacement and Matching  
Milbra Long (817) 645-6066  
Emily Seate (817) 294-9837  
PO Box 784  
Cleburne TX 76033

Specializing in  
Cambridge  
Fostoria, Heisey  
and others

E-mail: [longseat@sbcglobal.net](mailto:longseat@sbcglobal.net)  
[www.fostoriacrystal.com](http://www.fostoriacrystal.com)

### ISAACS ANTIQUES

(740) 826-4015

See our booths in Penny Court Mall in  
Cambridge and at Glass House Antique Mall  
Route 40, one mile east of  
I-70 Norwich, OH • Exit #164)

The  
American Bell  
Association International,  
Inc.

7210 Bellbrook Drive  
San Antonio, TX 78227-1002  
[www.americanbell.org](http://www.americanbell.org)



### MARGARET LANE ANTIQUES

2 E. Main St. New Concord, OH 43762  
Lynn Welker (740) 826-7414

Cambridge Glass Matching Service  
Hours: Mon-Fri 10-12 AM, 1-5 PM  
or by appointment

### Our House Antiques



Linda and David Adams  
Las Vegas, NV  
1-800-357-7169

[www.OurHouseAntiques.com](http://www.OurHouseAntiques.com)  
email: [David@OurHouseAntiques.com](mailto:David@OurHouseAntiques.com)



National Cambridge Collectors, Inc.  
PO Box 416  
Cambridge OH 43725

website: [www.cambridgeglass.org](http://www.cambridgeglass.org)

## Friends of Cambridge – Annual Fund

NCC exists through member giving using an Annual Fund system to raise operating funds and to ensure the preservation of Cambridge glass for future enthusiasts. The Annual Fund uses a common member "renewal" date and NCC sends out Annual Fund materials to everyone once a year. There are no monthly reminders or monthly renewal dates. The Annual Fund is NCC's primary means of support and all Annual Fund gift recognition levels are per household and include membership for all adults within the household. Additionally, each household will receive a subscription to the Crystal Ball newsletter, unlimited admissions to the museum, and rights to vote in elections for the Board of Directors. Multiple households at the same address are welcomed. NCC is a 501C(3) organization and Annual Fund gifts are allowed as a tax deduction under Section 170 of the Internal Revenue Code.

### Levels of Membership

Patron	\$35
Benefactor - Century	\$100
Benefactor - Mardi Gras	\$200
Benefactor - Japonica	\$500
President's Circle	\$1,000

President's Circle includes Convention registration for two members in the household and one copy of any new NCC publications.

### *The National Museum of Cambridge Glass*

Located at 136 S. 9th Street  
in downtown Cambridge,  
Ohio

**Closed for the  
season  
see you in April**

