



Cambridge Crystal Ball

Published by the National Cambridge Collectors, Inc. as a resource which informs, invites and inspires people to encourage the continued preservation of the glass produced by the Cambridge Glass Company of Cambridge, Ohio for future generations.

Issue No. 503

November/December 2016



**STEMWARE—DINNERWARE—
LUNCHEON SETS—
REFRESHMENT SETS—
DECORATIVE CENTERPIECES—
NOVELTIES—**
as well as a general line of **ETCHED and
DECORATED TABLEWARE AND
NOVELTY GLASS.**

A most complete line of Blown and Pressed Glassware of Quality and Design which makes a ready appeal and sales with profit.

Lines complete in Etchings, Engravings, Gold Encrustations and Plain Ware in Cambridge Colors:

**Gold Krystal Emerald Willow-Blue
Peach-Blo Amber-Glo Ebony**

QUALITY



ORIGINALITY

SALABILITY

**The Cambridge Glass Company
Cambridge, Ohio, U. S. A.**

REPRESENTATIVES:

The Cambridge Glass Co., 144 Fifth Avenue, New York City.
The Cambridge Glass Co., Room 1547, The Merchandise Mart, Chicago.
John A. Nixon, 921 Filbert Street, Philadelphia, Pa.
Edwin J. Nickey, 204 Wisconsin Avenue, Milwaukee, Wis.
W. R. Amdon, 99 Holford Street, Boston, Mass.
G. T. McCracken & Co., 315 Donovan Bldg., Detroit, Mich.
W. A. Songster, 1601 Emerson Street, Denver, Colo.
Leon Rich, 2211 Broadway, New Orleans, La.
A. W. Baumgardner, 641 Ridge Bldg., Kansas City, Mo.
A. H. Renwick, 946 South Flower Street, Los Angeles, Calif.
The International Bottle Co., Ltd., 48 Fore St., London, E. C. 2, England.

This ad and the following listing appeared in the

"China and Glass Trade Directory"

published by
China, Glass and Lamps
1930 Edition

Cambridge Glass Co., The,
Cambridge, O.

Arthur J. Bennett, president; W. L. Orme, vice president; W. C. McCartney, secretary and sales manager; G. Roy Boyd, treasurer; J. C. Kelly, general manager; O. J. Mosser, factory manager. 3 furnaces, 42 pots. Plain and colored tableware, and stemware, cut and engraved glass, druggists and chemical ware, novelties, art colors, glass dinnerware, gift shop specialties. Private mould work.

What's Inside

Cambridge Ad, 1930	1
President's Message	3
The Fall Educational Program in Photos	4
Museum Happenings	6
Rock Crystal Engraving #907, Neo Classic	8
National Museum of Cambridge Glass Group Tour Opportunities	11
From The Archives, Circular Letter #352	13
eBay Report	14
Was That a Cambridge #402 Vase on eBay?	16

National Cambridge Collectors, Inc.

PO Box 416 Cambridge, OH 43725-0416

Board of Directors

	2017	
Ken Filippini	Millie Loucks	Freeman Moore
	2018	
Julie Buffenbarger	Doug Ingraham	David Ray
	2019	
Rick Jones	Lindy Thaxton	Lynn Welker
	2020	
Cindy Arent	Larry Everett	Sharon Miller

Officers

President	David Ray
Vice-President	Doug Ingraham
Secretary	Sharon Miller
Treasurer	Millie Loucks
Sergeant-at-Arms	Larry Everett

Director of Strategic Planning	Ken Filippini
Director of Human Resources	David Ray
Chair, Standards Committee	Sharon Miller
Chair, Endowment Committee	Doug Ingraham

Member Services

Vice President

Member Relations
Convention
Digital Media
Glass Dash
Glass Show
Study Groups
Webmaster

Rick Jones
Freeman Moore - Membership Database
Rick Jones - Convention Director
Alex Citron - Manager of Facebook Operations
Larry Everett & Frank Wollenhaupt
Sandra Bridwell-Walker
Jeannie Moore - Study Group Coordinator
David Adams

Development

Vice President

Campaigns

Events

Projects
Publicity

(vacant)
Ken & Jane Filippini - Annual Fund Directors
Larry Everett - Director of the Heritage Society
Will & Bev Acord - Auction Managers
Lynn Welker - Auction Manager
Carl Beynon - Jeweler & Scotties Project Manager
Jonathan Fuhrman

Education

Vice President

Crystal Ball
Publications
Media Productions
Research
Programming

Larry Everett
Freeman Moore - Executive Editor
Mark Nye - Director of Publications
Dave Rankin - Director of Media Productions
Mark Nye - Archivist
Greg Vass - Director of Programming

Museum

Vice President

Public Operations

Facilities & Grounds
Collections
Merchandise Sales

NCC History
Community Relations

Cindy Arent
Sandra Bridwell-Walker - Docent
Julie Davey - Docent
Sandy Rohrbough - Docent
Betty Sivard - Docent
Gary Wiseman - Docent
Carl Beynon - Director of Facilities
Lynn Welker - Director of Collections
Lynn Welker - Gift Shop Manager
Cindy Arent - Gift Shop Manager
Mark Nye - Archivist
Cindy Arent

Administration

Vice President

Accounting & Finance
Information Technology

Ken Filippini
Lisa Neilson - Office Manager
(vacant)

ADDRESS CHANGES

Please send address changes to:
Membership - NCC
PO Box 416
Cambridge, OH 43725-0416
or by e-mail to:
membership@cambridgeglass.org



CONTACT US

136 South 9th Street
Phone: 740 432-4245
nccglass@yahoo.com



David Ray, President
e-mail: westervillesh@hotmail.com
Sharon Miller, Secretary
e-mail: secretary@cambridgeglass.org

Heritage Society

Ensuring the preservation mission of the NCC through planned giving and estate bequests.

Members of The Heritage Society are those who have included the NCC in their wills or estate plans, thus providing the organization with a secure future.

The mission of The Heritage Society is to foster smart estate planning and to assure that NCC is not forgotten as an important beneficiary. Any pledge is meaningful and appreciated.

All Cambridge collectors - both current and future - will benefit from, and be grateful for your support.

Let us know how we can help with your future plans.

NCC Website: www.CambridgeGlass.org

Miami Valley Study Group Website: www.mvsg.org



PRESIDENT'S MESSAGE

Preparing for the Holidays

During the months of November and December, many businesses in the Cambridge area participate in Dickens Victorian Christmas. At the end of October, Cindy Arent and a team of volunteers transformed the National Museum of Cambridge Glass for visitors to the Cambridge area searching to experience a taste of life in American during the Victorian Era. Not only will the museum be tastefully decorated for the Holiday Season, but guests will be presented with more than 100 handmade Christmas tree ornaments constructed from authentic Cambridge glass. For the past few years, the anticipation of the newest Cambridge Christmas ornaments has increased to the point that customers begin calling the museum the first of October asking about the latest designs. Museum volunteers began the labor intensive process of creating the ornaments in September with a goal of reaching 100 ornaments prior to the beginning of the Holiday Season. Five weeks ago, I toured the Cambridge branch of Santa's work shop and witnessed the amount of time and work required to make a single ornament. If you are fortunate to be traveling through the Cambridge area during November or December, stop at the museum and check out the unique Christmas items available for purchase as well as our fully stocked gift shop. Everyone enjoys a gift of Cambridge glass!

About three years ago, NCC purchased the property on the north side of the museum for \$125,000. To secure the loan on the property, the bank required NCC to purchase a CD of equal value. After the first year, the loan was reduced by \$25,000 and we were able to return \$25,000 to the Endowment Fund. Annually NCC and the bank met to renegotiate the terms of the loan. After successfully renegotiating the loan the past two years, the bank increased our mortgage rate to more than 4.5% for 2016. As a result of the sudden rate increase, a NCC member generously offered to loan the club \$100,000 at an interest rate of 1%. After accepting the offer, the CD was closed and the \$100,000 was returned to the Endowment Fund. At approximately the same time, NCC received a cash gift of \$61,541.44 from Patty Rutledge's estate. The board voted to use Patty's gift to reduce the loan by \$60,000. Using the proceeds from the rental property, a 4-year repayment plan was created to pay off the remaining \$40,000. Currently, we receive \$900 per month from the tenants in the brick building.

For the past 6 years, I have attended glass shows throughout the United States in an effort to connect with NCC members

who are unable to return to Cambridge and participate in our annual member events. With the flight delays and cancellations that resulted from winter storm Jonas still fresh in my mind, I decided to attend the Front Range Glass Show held in Loveland, CO the first weekend of October. The chance of a winter storm impacting a flight to and from Colorado in October is fairly small. Loveland is located about one hour north of Denver. NCC members Tom McClean and Don Spencer graciously hosted me for the weekend. Having collected Cambridge glass for nearly 40 years, Tom and Don have owned and seen more rare and unusual pieces of Cambridge glass than most collectors can imagine. On Saturday morning, the three of us traveled to Loveland to shop the Front Range Glass Show. To my surprise, one of the first people in line was Kib Brady. Kib is the grandson of W. C. McCartney. Mr. McCartney was a Sales Manager at the Cambridge Glass Company for nearly 50 years.

Dealers from around the country displayed their finest pieces of elegant and depression era glassware. Many unique pieces of Cambridge glass were available for purchase. A set of 8 gold encrusted 3500 finger bowls with the Minerva etching captured everyone's attention. Having only seen one 3500 finger bowl, the set of 8 was quite impressive. The same dealer had a very unusual "bent" Amber 2-Kid flower frog. I am not sure if the posture change was intentional or accidental. Nevertheless, the flower frog would make a fine addition to any collection. Other interesting Cambridge items included a 179 Moonlight juice pitcher with the Alpine decoration, a 1300 8" Crown Tuscan vase with black enamel trim, 672 Pristine ice bucket with the Elaine etching, 3450 (Nautilus) Crown Tuscan 40 oz. decanter w/ crystal stopper, a pair of 3011 Royal Blue candlesticks, a 3500/41 Crown Tuscan covered urn with the gold encrusted Rose Point etching, and much more. I greatly enjoyed my trip to Denver and spending time with members Tom McClean, Don Spencer, Tom Cotter, Tina Broderson, Michael Horine, Sandra Bridwell-Walker, and Roger & Millie Loucks.

The January issue of the Crystal Ball will contain a complete listing of the March auction catalog. In addition, photographs of each auction item will be uploaded to the website before January for your convenience.

Best wishes for a Merry Christmas and Happy New Year.

David Ray
westervillesh@hotmail.com

Cambridge Decanters & Decanter Sets The Fall Educational Program in Photos

Decanter (noun):

a vessel used to decant or to receive decanted liquids; especially an ornamental glass bottle used for serving wine.

Decant (verb):

- 1. to draw off (a liquid) without disturbing the sediment or the lower liquid layers*
- 2. to pour from one vessel into another*
- 3. to pour out, transfer, or unload as if by pouring.*



About 60 members met at Theo's Restaurant on Saturday October 15 to see and learn about decanters and decanter sets. As these pictures indicate, it was an impressive display. Check the video section of the MVSG website for the video of the program presented by Lynn Welker with the support of Larry Everett and Frank Wollenhaupt.



Wow - check out that long display.

And even more decanters -
check out the shapes, colors and variety of stoppers.



Make sure to review your catalog reprints for more examples.

and then view the video online.

Museum Happenings

By Cindy Arent

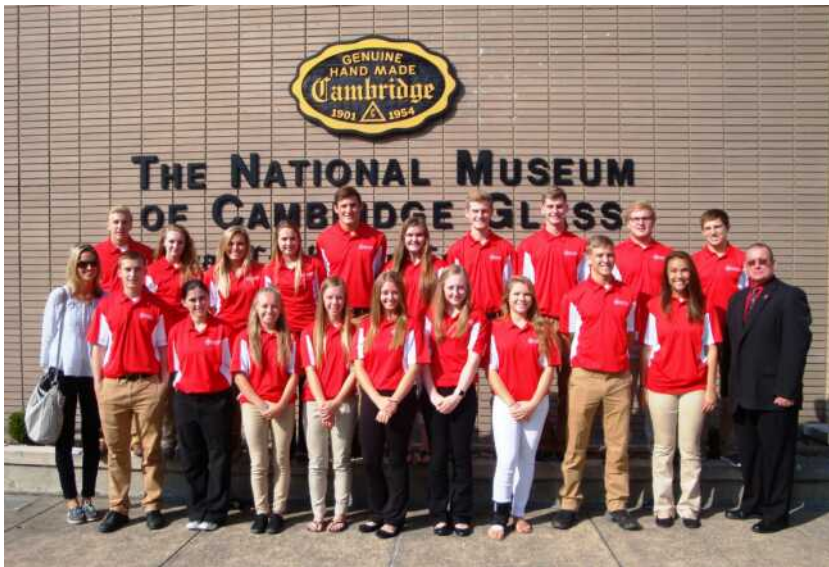


Several members of the Kulick family worked at the Cambridge Glass Company. In September, more family members came to see the museum and brought a Crown Tuscan shell vase given them by their father. We love when visitors bring Cambridge Glass and share its history!



In October a few members helped clean up at the NCC Mould Storage Building. One of the moulds cleaned was the “two bun Geisha” flower holder. This mould was filled with the head at the bottom, the photo has been rotated to show the detail.

Left to Right: Reggie Gerko, Carl Beynon, Cindy Arent, Joe Miller and Rick Bennett. Lindy Thaxton took the photo.



The Youth Leadership group from the Cambridge Area Chamber of Commerce visited the museum in October to learn about the history of the Cambridge Glass Company. Members of the group are selected by area high schools to participate in the program.



If you had the chance to visit the National Museum of Cambridge Glass this year, you saw the dining room decorated in Royal Blue.



In October, the display was changed to Cambridge Rose Point. Cambridge glass is complemented with dinnerware made by the Pope Gosser China Company and flatware by Wallace.

The Rock Crystal Engraving #907, Neo Classic

By John Maves and Freeman Moore

The Cambridge Glass Company produced a large variety of engravings. Each piece was individually cut by a skilled artisan, recreating the pattern on each piece. Compared to pieces decorated through the etching process, the production of glassware with engravings was a much more labor intensive effort. Some of the engravings are very simple such as the Laurel Wreath and Lexington patterns, while others such as Achilles and Broadmoor are much more detailed.

Let's take a look at one specific engraving.

The rock crystal engraving #907, Neo Classic, was produced on two stemware lines; the Pristine (#1936) line and the 3132 line.

Looking at a 1940 price list, you'll notice the majority of the pieces were from the Pristine line. A few items were made in the 3400 and 3500 line, in addition to other miscellaneous items. For example, the Cambridge Glass Company listed the #138 Sugar and Cream for \$60.00 per dozen for the retail customer.

All sizes of stemware from either line were listed for \$22.50 per dozen in 1940. Today, finding stemware in either line is not too difficult, but locating the additional pieces to supplement a collection can be quite a challenge.

Enjoy viewing the pictures. We would appreciate getting photos of additional pieces. Thanks.

For additional reference, consult these NCC publications:

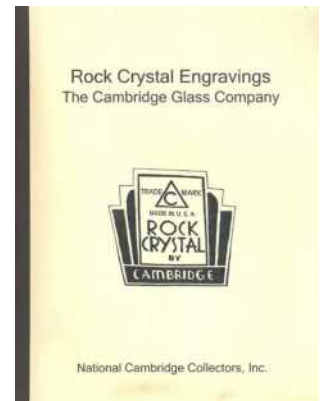
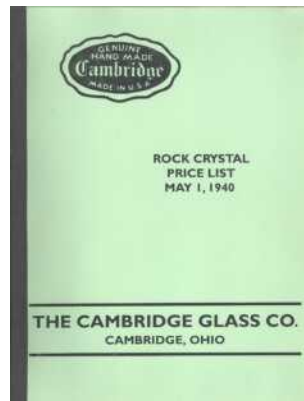
- * Rock Crystal Price List, May 1940
- * Rock Crystal Engravings, The Cambridge Glass Company



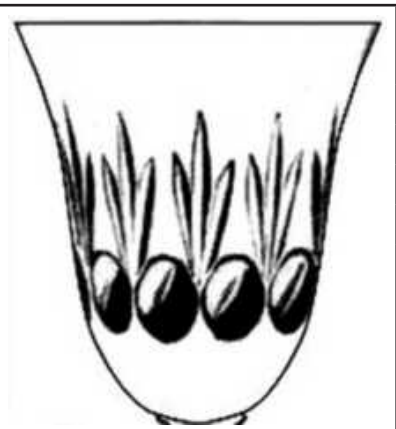
Pristine
(1936)



3122



No:	907
Name:	Neo Classic
First Date:	1938
Last Date:	1947
Catalog:	1938, 1940 R.C.
Stemware:	Pristine (1936), 3132
Comments:	None





Did you see the Neo Classic stem in the advertisement shown on the next page?

Exquisite Beyond Compare

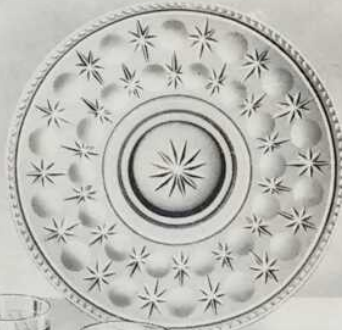


*when your setting is
Cambridge*



AUTHENTIC HAND-CUT ROCK CRYSTAL

Scintillating like precious jewels, cuttings by Cambridge provide the ultimate in beauty and luxury for table settings. Every design is individually hand-cut by Cambridge artisans, every piece is individually handmade from famed Cambridge Crystal. That is why Cambridge Cut Rock Crystal is recognized as the highest expression of craftsmanship, why it is the perfect complement — and compliment — to traditionally fine sterling, china and table linen. Only a few of the gracious designs are shown here. Ask to see Cambridge Hand-Cut Rock Crystal at your favorite store. The Cambridge Glass Co., Cambridge, Ohio.



Cambridge *Crystal*
HANDMADE

NCC welcomes the following new members

- | | |
|-----------------|----|
| Marjoria Framme | OH |
| Liz Goodall | OH |
| Katie Heidgen | OH |
| Jane Stewart | PA |



NCC in Missouri

Freeman & Jeannie Moore recently attended the Heart of America Glass Club show in Independence Missouri. Among other things, we were bringing a donation from another NCC member in Texas to the museum with the help of Sandra Bridwell-Walker. We had information about NCC available on the general club information table. We enjoyed visiting with people throughout the show, and answering questions about National Cambridge Collectors. NCC members Ralph and Kathy Litten of Missouri stopped by for conversation, and of course, a photo opportunity. Any show that features Cambridge etch E743 on the cover of its program, has to appreciate the finer things. This show is held twice a year, March and October, so make plans to attend if possible.



Back row: Freeman and Jeannie Moore
Front row: Ralph and Kathy Litten

National Museum of Cambridge Glass

Group Tour Opportunities

When a group tour arrives at the museum, a staff member always boards the bus, welcomes everyone and gives a brief history of The Cambridge Glass Company. They also explain how their museum experience will unfold.



Your group will visit three areas of the museum during the 90 minute tour. In the museum auditorium guests will view a vintage 8 minute film that describes the handmade glassmaking process. They will then be invited to dress as glassworkers and hold the tools used by the artisans many years ago.



The next area of the museum is the glass display area where your guests will be led on a guided

tour featuring over 9,000 pieces of Cambridge Glass.



In the Museum Education Center, visitors learn about the etching process and do pencil rubbings from original etching plates to keep as a souvenir.



Additional options: Your group will be greeted on the bus by a costumed character upon arrival.

Time Travelers

Extra! Extra! Experience what life was like for a Cambridge Glass House family the early 1900s! Meet the mother, Mrs. Yonek in her babushka, who “held down the fort” at home making ends meet for her family.



Cambridge Glass Goes Hollywood

- Hear about what Hollywood stars bought and used Cambridge Glass.
- Did you know that Cambridge Glass was used in the movie White Christmas? See what piece it was and you might even meet the Haynes sisters dressed in blue!



Cambridge Etiquette

This tour option features an elegant table setting, along with tips for impressing your friends and family with your knowledge of the rules of dining etiquette. Learn the four keys to conversation at the dinner table and how to eat like a lady or gentleman. Experience how to set both an informal and formal table. Each visitor will receive an etiquette hand out to take home, and also a recipe for an English Tea Cucumber Sandwich.



When you’ve boarded the bus to leave, volunteers will come on the bus to bid your group farewell. They even sing during the holidays!

National Museum of Cambridge Glass

136 S. 9th St. P.O. Box 416

Cambridge, OH 43725

740-432-4245

www.cambridgeglass.org



Supported by a grant from the Cambridge/Guernsey County
Visitors & Convention Bureau
VISITGUERNSEYCOUNTY.COM
800.933.5480

From The Archives
contributed by Mark Nye

July 25th, 1932

CIRCULAR LETTER # 352

We have had quite a few calls for our #1240 Bowl made in the Carmen Glass. We have, therefore, decided to produce this bowl and the #647 2-holder Candelabrum in Carmen. Samples are being sent you.

This makes a most attractive Console Set.

We think you will find a ready demand for this particular Bowl and Set in the Carmen glass for we know of nothing else on the market like it.

Prices are as follows:

1240 12 in. 4-toed Oval Bowl	\$60.00 Per Dozen
647 2-holder Candelabrum	\$45.00 Per Dozen
1240/647 3-pc Console Set	\$12.50 Per Set

These are LIST prices - subject to the usual discounts.

THE CAMBRIDGE GLASS COMPANY
W. C. McCartney

Editor's Note: Handwritten additions to the copy retained in the Cambridge were as follows:

The price for the 647 2-holder Candelabrum had a line thru it with a hand written price of 30.00

This change was not dated.

Added above the company name was "1338 candelabrum 45.00" While not stated this was no doubt the price per dozen.



Welcome to the eBay Report. This column features Cambridge glass items that sold on eBay circa late September to mid-October, 2016. Selling prices have been rounded to the nearest dollar. If no glass color is mentioned, assume that the item is crystal. Here we go:

Statuesque (Nude Stem) Line

There continues to be a surfeit of Statuesque items on eBay. As ever, those with more unusual shapes, colors, and decorations still bring high prices, but more ordinary items are not garnering the prices they once did. Bad for sellers, good for collectors.



A true cordial with Amber bowl sold for \$175. One with a Royal Blue bowl sold for \$210, as did one with a Carmen bowl. One with an Amethyst bowl and an original Cambridge label on the foot garnered \$185. All four cordials sold for the opening bid, no more.

A mint dish with shell top, also with an Amber bowl, likewise sold for its opening bid of \$250. Later, another seller offered a pair of mint dishes with Amber bowls, which sold for \$555.



A comport with cupped top in Carmen brought a paltry \$76, while a comport with flared top in Heatherbloom commanded \$321.

A single candleholder in Windsor Blue brought \$224. A bud vase with Amethyst top was lovely, but it brought only \$178.



A 6-1/2 inch tall stem (I believe that makes it the cocktail) with a scarce combination of a Gold Krystol bowl and satinized foot and stem brought only \$54.

Etched Tableware and Stemware

I love spare parts! A #3500/139 Gadroon square lid for the honey jar, etched Rose Point, was a sweet deal at \$26.

The complete piece usually sells for around \$200.



A pair of #3400/646 single candlesticks in Heatherbloom, etched Diane, lite up the room for \$164.

By now y'all know that the more obscure pieces of Cambridge glass are what fascinate me. It took a while, but finally someone had the sense to pull the BIN trigger on a set of EIGHT amber #332 5 inch coasters with #732 Majestic etch on them for \$50. HELLO?? That's about \$6 apiece for an etched, colored glass coaster. You see coasters etched Rose Point and in other major Cambridge patterns that were made chiefly in crystal, but when do you see a full set of them in one of the 1920s etchings? Few other companies bothered to put acid etchings on tiny pieces like coasters and bobeches, but Cambridge did, and for that we should be appreciative.



A #138 cream & sugar set in with blue enamel encrusted Willow etch sold for only \$47. Sure, there was some loss to the gold trim, and the enamel was a bit lighter on the cream, but I would have expected these to fetch more.



Enamel, Gold and Silver Decorations

High-quality silver overlay on Cambridge glass continues to amaze. A #3400/38 80 ounce ball jug and a ice pail with metal bail, each partially satinized and decorated with a ducks-and-cattails scene, were shot down for \$937. A very impressive set, but the ice pail is probably Fostoria.



A set of 6 1402/100 Tally Ho cocktails with Carmen bowls and gold decoration D/1007 (Lace) sold for \$300 on a Buy It Now. Another seller recently offered wines in the exact same shape, color, and

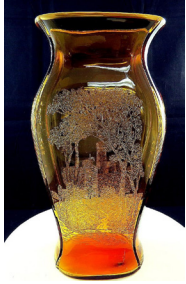


decoration, but those went over with a yawn, perhaps due to some pattern wear.

A Statuesque comport in Crown Tuscan with D/995 Chintz gold decoration brought \$510. A #3500/41 10-1/2 inch covered urn in Crown Tuscan with D/995 Chintz gold decoration sold for the opening bid of \$140.



A #3400/17 vase in Amber with the rare Windsor Castle etching garnered 34 bids and brought an impressive \$609. The sides of the vase had a rampant lion etching, and the top rim and bottom portions were trimmed in gold. Congratulations, high bidder; this is a real Cambridge gem.



Miscellaneous

For a while there were many sales of nice Everglades items on eBay, but there have been few good Everglades offerings lately. The bowl and a pair of #1209 single candleholders (the “three leaves sticking up”) shape sold for \$82 on a Buy It Now. Looking at it again, the bowl looked more like the later Arcadia pattern to me than it did one of the Everglades variations. So, let’s combine an Arcadia 61 12½” Crimped Bowl with a pair of #1209 Everglade candleholders.



An amethyst #3500/25 footed bowl with the Ram’s Head designs butted its way into someone’s collection for a \$150 Buy It Now price.

A #81 Martha Washington cake salver in crystal sold for the opening bid of \$25. Why would I report on a piece that sold for such a low price? Because it’s interesting, and unusual. It was reported as a stemmed cake plate; however the Martha Washington #81 is called a compote or tidbit tray. It would be a rather delicate stem for a cake stand, and is not something I see very often.



Speaking of Martha Washington, a #676 rolled rim console bowl in Pomona Green (the 1920s-era opaque color formerly known as “Avocado” for its resemblance to the flesh of that fruit) brought only \$73.

A seller offered a 4-piece Cambridge “Game Set” with each tumbler having a foot in Carmen or Ebony depicting one of the suits in a deck of cards. Three of the four tumblers had original Cambridge labels on the foot, and several had the remains of white stickers that read, in part, “Patent Pending.” Oh, did I mention that they were in the original box, too? No one would buy them for \$100, so the seller had relisted them at \$75, and they sold. I remember the old days when this was easily a \$200 set.



A #74 Royal Blue Mount Vernon honey jar with cover inspired feverish bidding, finally ending at \$224. If you lost out on this, your consolation is that the next one that turns up will probably sell for less.

Speaking of Mount Vernon, why did no one grab the pair of candleholders that were factory molded with a hollow stem and wired as lamps? Was \$100 too much to pay for a matched pair? Perfect for matching nightstands in your bedroom, or to light an elegant glass show booth.



A Cambridge “prism” dealer sign in Royal Blue brought more than most I’ve seen -- \$224. You have to wonder what one in Heatherbloom would sell for... or Rubina!



Well if you can’t find a prism sign in Rubina, you could console yourself with a nice 8-3/4 inch tall covered candy with honeycomb optic in Rubina. Someone did just that, for \$164.

That’s all for now. If you see any interesting Cambridge glass on eBay that you think I should be watching or reporting on, or if you have any other input, feel free to contact me at LAGlass@pacbell.net. Until next month, happy Cambridge hunting!

Was That a Cambridge #402 Vase on eBay?

by Michael Krumme

Let's take a closer look at one particular item (162191773711) that was on eBay recently.



The seller listed what they had identified as a #402 12 inch vase in Ivory with a Rockwell sterling silver overlay of flowers. It got plenty of attention, since that shape is not one you would expect to have been made in that color. The bottom clearly had the Rockwell stamp with "24-51".



Many Cambridge hounds had it on their watch list to see where it would land. Given the strong interest in silver decorations on Cambridge glass, and the rarity of this shape in Ivory, most expected a strong sale price. However, the \$1,701 winning bid shocked many.

I've corresponded with several collectors about this item, and some expressed doubt that the piece is actually Cambridge. Here are my thoughts – which I admit are of limited value, since I have not seen or handled the piece in person. Let's start with a known Cambridge #402 vase.



As a longtime collector of Paden City glass, I am very familiar with their #184 vase, which is very

similar in shape to this. As I amassed a collection of Paden City glass, I had to learn to discern the difference between similarly-shaped vases made by Cambridge, Imperial, and Fenton.

First, let me say that the Cambridge vases of this shape profile tend to be more flared-out at the rim than those made by the other companies I mention. This vase exhibits that.



Paden City #184

Second, Paden City did not make an ivory color, so that rules them out. Imperial did make an ivory color, but I believe that it was later in time; thus, Imperial is unlikely, though still a possibility.



Imperial #775

Fenton made ivory colored glass, but again, I believe it was later than the late 20s/early 30s timeframe, which is the era to which I believe the vase dates. Also, the Fenton vases of this shape tend to be blown thinner. (Coincidentally, Fenton assigned the same shape number to their vase as Paden City did: #184.) The Cambridge, Fenton, and Paden City vases were available in 8, 10, and 12 inch sizes.



Fenton #184

Based on all these factors, my verdict is "Cambridge." If you feel differently, please email me with your thoughts and we'll continue the discussion.

Gosh, the bulbous-bottom vases could be the subject of an entire article.



NCC Events

**2017 NCC Auction
Saturday March 4, 2017**

**2017 NCC Convention
June 22-24, 2017**

New Member Benefit

Each NCC household is allowed one free 20-word classified ad in the Crystal Ball per calendar year as part of their membership. This can be a "For Sale" or "Wanted" type of classified ad. Submit your ad by email to editor@cambridgeglass.org

CLASSIFIEDS

Nothing this month.

Recent Finds



3500 footed finger bowl,
gold encrusted Minerva

Glass Shows

November 5-6, 2016

Michigan Depression Glass Society
- 44th Annual Show
Ford Community and Performing Arts Center
Dearborn, MI
<http://www.michigandepressionglass.com>

November 12-13, 2016

45th Annual Hudson Valley Glass Club Vintage Glass Show
Red Hook Fire House
Red Hook, NY 12571
<http://www.facebook.com/groups/1655959604686124/>

November 20, 2016

Big Apple Depression Glass Show & Sale
Albertson V.F.W. Hall
155 Seasingtown Road
Albertson, NY

January 21-22, 2017

Cartersville Looking Glass Show/Sale
Cartersville Civic Center
Cartersville, GA 30120
<http://www.meyershow.com/cartersville.php>

January 28-29, 2017

Sanlando Depression Glass Show & Sale
Sanford Civic Center
401 E. Seminole Blvd.
Sanford, FL 32771
<http://sanlandodepressionglassshow.com/>

January 28-29, 2017

Portland's "Rain of Glass"
34th Annual Glass, Antiques & Collectibles Show and Sale
Washington County Fairgrounds
Hillsboro, OR
<http://www.rainofglass.com>

February 17-19, 2017

The Houston Glass Show & Best Little Antique Show in Texas
Fort Bend County Fairgrounds
Rosenberg, TX 77471
<http://www.maxmillerantiques.com>

February 25-26, 2017

Arkansas Glasshoppers 31st Annual
Depression Era Glass Show & Sale
Hall of Industry - State Fairgrounds
Little Rock, AR
<http://www.arglasshoppers.org/>

"You'll see more glass when you walk into a glass show than in any online auction. Attend a show and enjoy the beauty."

For Sale - NCC Books and DVD

Published by NCC • Members receive a 10% discount

TITLE		REGULAR PRICE	MEMBER PRICE
1910 NearCut Catalog Reprint	108 pages, paperback, no price guide	\$14.95	\$13.45
1927-29 Catalog Reprint	66 pages, paperback, no price guide, includes identification guide	\$9.95	\$8.95
1930-34 Catalog Reprint	250 pages, paperback with 2000 price guide	\$14.95	\$13.45
1930-34 Catalog Index	Index for above	\$2.00	\$1.80
1949-53 Catalog Reprint	300 pages, paperback, no price guide	\$19.95	\$17.95
Cambridge Colors II (New)	Hardcover with price guide	\$19.95	\$17.95
Cambridge Rose Point – A Collector’s Guide *** NEW ***		\$29.99	\$27.00
Caprice	200 pages, paperback, no price guide	\$19.95	\$17.95
Decorates	136 pages, paperback, no price guide	\$14.95	\$13.45
Etchings (2nd Edition)	102 pages, paperback, no price guide	\$17.95	\$16.15
Etchings, Non-Catalogued	70 pages, paperback, no price guide	\$12.95	\$11.65
Etchings: Blossomtime	26 pages, paperback, no price guide	\$7.95	\$7.15
Etchings: Candlelight	30 pages, paperback, no price guide	\$7.95	\$7.15
Etchings: Chantilly	44 pages, paperback, no price guide	\$7.95	\$7.15
Etchings: Diane	53 pages, paperback, no price guide	\$7.95	\$7.15
Etchings: Elaine	64 pages, paperback, no price guide	\$9.95	\$8.95
Etchings: Portia	57 pages, paperback, no price guide	\$7.95	\$7.15
Etchings: Wildflower	42 pages, paperback, no price guide	\$7.95	\$7.15
Rock Crystal Engravings	119 pages, paperback, no price guide	\$17.95	\$16.15
Rock Crystal Engravings (Listings)	Companion to above; lists all pieces in all patterns	\$9.95	\$8.95
Rock Crystal 1940 Illustrated Catalog & Price List		\$14.95	\$13.45
Rose Point - Second Edition	146 pages, paperback, no price guide	\$19.95	\$17.95
Pharmaceutical Catalog No.8 1915-1920 Reprint	68 pages, paperback, no price guide	\$9.95	\$8.95
Cambridge Arms compendium		\$7.95	\$7.95
1916 General Catalogue		\$13.95	\$13.95
Rose Point Program - DVD (Postage \$3.00)		\$19.95	\$17.95
Caprice Program - DVD (Postage \$3.00)		\$19.95	\$17.95

How to Order by Mail or from the NCC Website

Send orders to:
NCC • PO Box 416 • Cambridge, OH 43725

OHIO RESIDENTS PLEASE ADD 7.25% SALES TAX

SHIPPING:
\$5.00 FOR THE FIRST PUBLICATION
\$1.00 FOR EACH ADDITIONAL ITEM

Please include your name, complete mailing address and your phone number or e-mail address.

Payments by check or Money Order only, payable to NCC

Books may also be purchased on the NCC website,
www.cambridgeglass.org.

Major Credit Cards are only accepted for web purchases.



DEALER DIRECTORY

Dealer Directory - \$24 for 12-months, size limited by box (see below). Includes listing on NCC website.

Advertising Rates:

1/8 page \$15 1/4 page \$20
1/2 page \$30 Full page \$50

Electronic submissions should be emailed to:

editor@cambridgeglass.org

Use Word. Mailed submissions and all payments should go to PO Box 416, Cambridge, OH 43725. Deadline is 10th of preceding month. Ads must be paid in advance. Show listings are FREE; send info to PO Box or e-mail address 60 days before event.



Connecting Buyers & Sellers!
Tell us what you are looking for and we help find it.
CAMBRIDGE GLASS.US
P. Snyder 740-601-6018
E-Mail and Find Your Glass!
psnyder@cambridgeglass.us
www.cambridgeglass.us

E-Blast
When you are searching for Cambridge glass, email your request and it is emailed to all members and dealers.
P. Snyder, 1500 Edgewood Dr., Circleville, Ohio 43113

PATTON HOUSE ANTIQUES
Specializing in Glass
Heisey • Cambridge • Fostoria • Duncan
Factory Antique Mall
Verona, VA off I-81. Exit 227
The Daniels, Box 547 Louisa, VA 23093
(540) 967-1181

Cheshire Cat Antiques
Specializing in elegant depression to mid-century era glass and vintage kitchen glass.
Francee Boches > 305-884-0335
fboches@cheshirecatantiques.com

Pull up a Mouse!
Shop 24 hrs a day at
cheshirecatantiques.com



Cherished Collectibles
Shopping 24 hours in our online store
Glassware, Figurines, Collectors' Plates
www.cherishedcollectibles.com
Elegant and Depression Era Glass

Heirloom Glass Antiques & Gifts
Large Selection Of Cambridge
13411 Columbia Hwy.
Lynnville, TN 38472
www.heirloomglass.net 931-446-5492
juanita@heirloomglass.net

Edward Sawicki
Memories Antiques
"Glass is our Passion"
Candlesticks and stemware our Specialty."
PO Box 153 646-522-1506
Dunnellen, NJ 08812 ejsawicki@optonline.net

CRYSTAL LADY
1817 Vinton St. Omaha, NE 68108
Bill, Joann and Marcie Hagerty
402-699-0422
Specializing in Elegant Glass & Collectibles
www.crystalladyantiques.com


Glen & Carolyn Robinson
White Rose Antiques
Specializing in Depression Era Glassware
2454 McFarland Road
York, SC 29745
803-684-5685
gandcrobinson@aol.com
whiteroseglassware.com

CRYSTALLINE COLORS
Cambridge • Fostoria • Elegant Glass
Penny Court Mall, Cambridge - 2 booths
Medina Antique Mall
Medina, OH (I-71, exit 218)
Lynne R. Franks 216-661-7382

GLASS FROM THE PAST
Maureen Gillis

www.glassfromthepast1.com
email: maureen@glassfromthepast1.com

Cambridge Nudes - Dave Small
HTTP://CambridgeNudes.com
3011 Cambridge Statuesque
Buy, Sell, Trade
davesmall@mac.com
281-376-3686

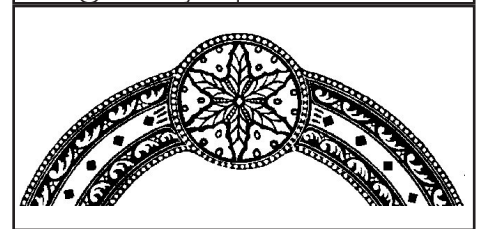


TWEAK COLLECTIBLES
Specializing in Elegant Glass
BUY & SELL
WANTED: CAMBRIDGE TURKEYS
417-742-3653
btummons@aol.com

Virtualattic at The Glass Chalet
Specializing in
Elegant Depression Era Glass
Sandra L. Bridwell-Walker
PO Box 726
Newcomerstown OH 43832-0726
740-492-5022 (H) 817-559-0328 (C)
virtualattic@sbcglobal.net theglasschalet@sbcglobal.net

Max Miller
Elegant American Glassware
www.maxmillerantiques.com
The Market Place
10910 Katy Freeway. 713-410-4780
Houston TX 77043 mmxglass@aol.com

Ohio Valley Antique Mall
7285 Dixie Highway (Route 4)
Fairfield, OH 45014
Cincinnati's Largest Multi-Dealer Antique Mall
Hours: DAILY 9:00 a.m. - 9:00 p.m.
513-874-7855
www.ohiovalleyantiquemall.com
cfaxon@ohiovalleyantiques.com



ISAACS ANTIQUES
(740) 826-4015
☞ Located in ☜
Penny Court Mall **Relics Mall**
637 Wheeling Ave 616 Main St
Cambridge, OH Zanesville, OH

BAKER FAMILY MUSEUM
805 CUMBERLAND ST.
CALDWELL, OHIO 43724
740-732-6410
bakermuseumnellbaker@msn.com
Wed & Thurs 9-4; Fri - Sat 9-5

MARGARET LANE ANTIQUES
2 E. Main St. New Concord, OH 43762
Lynn Welker (740) 826-7414
Cambridge Glass Matching Service
Hours: Mon-Fri 10-12 AM, 1-5 PM
or by appointment

Our House Antiques
Linda and David Adams
Las Vegas, NV
1-800-357-7169
www.OurHouseAntiques.com
email: David@OurHouseAntiques.com




National Cambridge Collectors, Inc.
PO Box 416
Cambridge OH 43725
email: editor@cambridgeglass.org
website: www.cambridgeglass.org



Mold for the #1138 - 8½" High Sea Gull Figure Flower Holder



"The molds are works of art in their own right. So grateful that NCC has been able to preserve them!"

Yes, they are very interesting..... history at its best. Thanks!"

Did you notice the Sea Gull is up side down in the mold?



The National Museum of Cambridge Glass

**Holiday Hours
Saturday and Sunday:
Noon to 4:00 pm
November 5 - December 18**

