

May 3, 1938.

W. L. ORME

2,115,962

TABLE DECORATING UNIT

Filed April 23, 1937

2 Sheets-Sheet 1

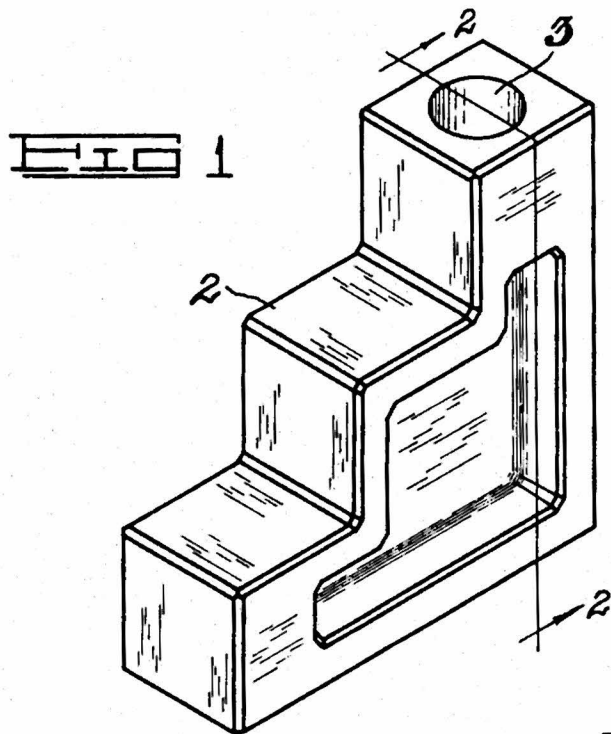


FIG 2

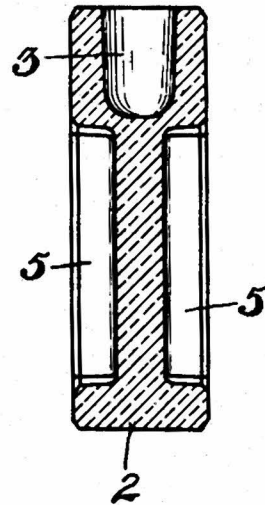


FIG 3

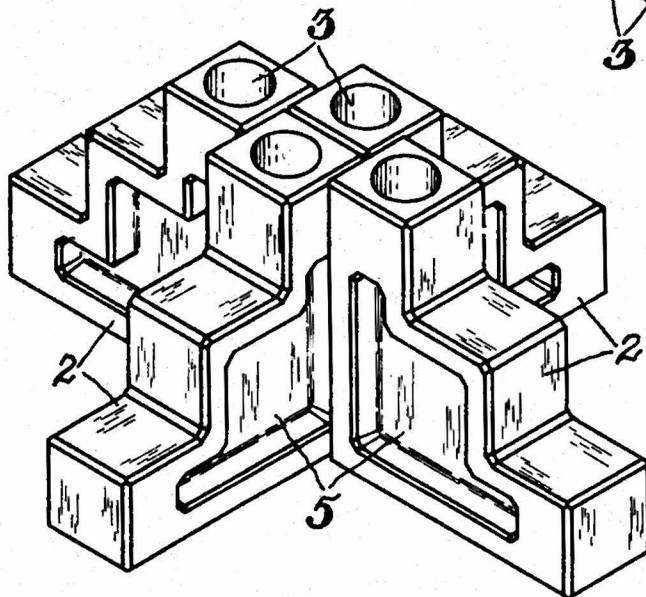
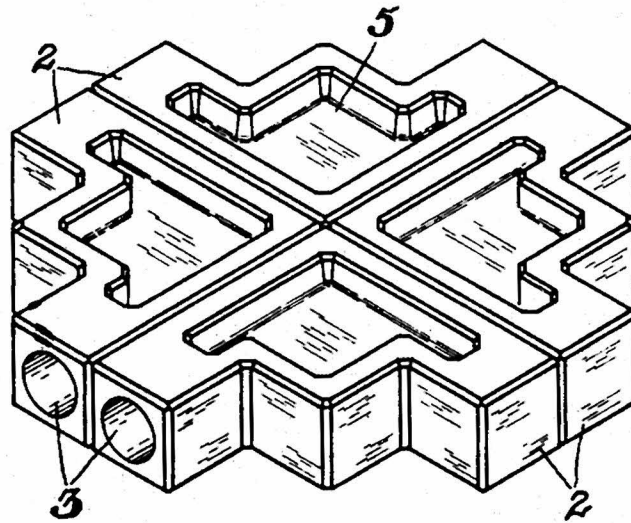


FIG 4

INVENTOR

W. L. Orme
BY *Martin O. Mauion*
ATTORNEY

TABLE DECORATING UNIT

Filed April 23, 1937

2 Sheets-Sheet 2

FIG 5

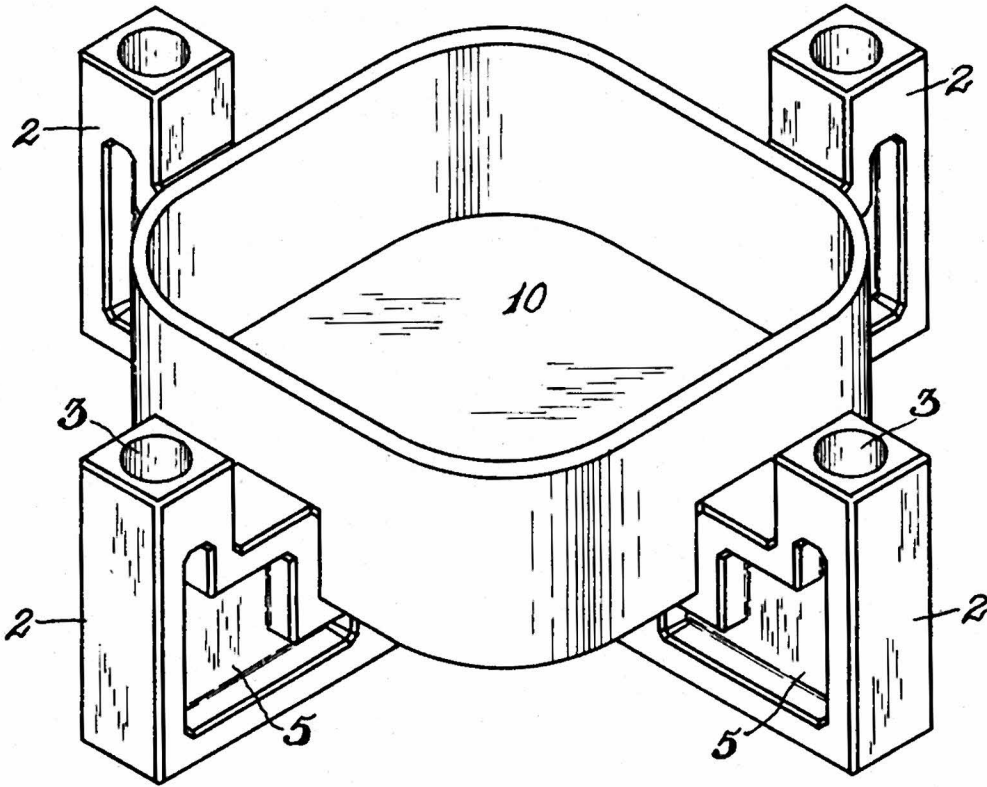
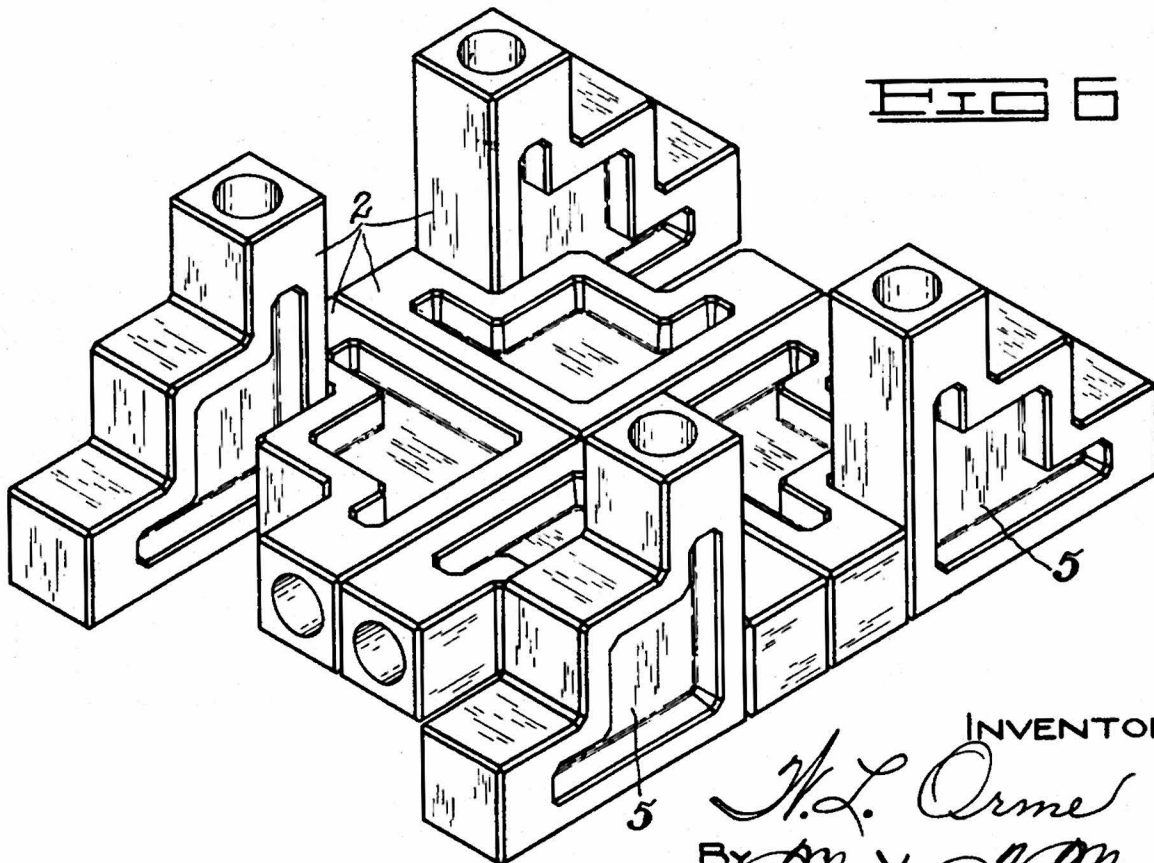


FIG 6



INVENTOR

W. L. Orme
By *Martin J. Mauion*
ATTORNEY

UNITED STATES PATENT OFFICE

2,115,962

TABLE DECORATING UNIT

Wilbur L. Orme, Cambridge, Ohio

Application April 23, 1937, Serial No. 138,602

3 Claims. (Cl. 240-2)

This invention relates to articles for home and table decoration, and more particularly to a candlestick capable of use singly or collectively in groups, and in combinations with other articles of decoration whereby numerous attractive decorative arrangements may be achieved.

One of the objects of the invention is to provide a modest shaped candlestick unit, preferably of crystal glass, which may be utilized in groups in decorative schemes in numerous positions and in various combinations wherein the hostess or interior decorator may secure a variety of tasteful settings.

Another object of the invention is to provide a candlestick unit which may be disposed in either a vertical plane or a horizontal plane to serve a dual purpose in the creation of decorative schemes.

The invention is shown by way of illustration in the accompanying drawings, in which—

Figure 1 is a perspective view of one of the candlestick units;

Figure 2 is a vertical sectional view taken on line 2-2, Fig. 1;

Figure 3 is a perspective view of a group of candlestick units arranged in a decorative scheme, the units being disposed in a horizontal plane;

Figure 4 is a perspective view of a group of candlestick units arranged in another decorative scheme, the units being disposed in a vertical plane;

Figure 5 is a perspective view of a group of the units arranged in combination with a flower bowl or similar article; and

Figure 6 is a perspective view of a group of the units arranged in a still different combination, some of the units being disposed in a vertical plane and the others being disposed in a horizontal plane.

Referring to said drawings, the reference numeral 2 designates a candlestick unit having one of its edges of substantially stepped formation and having a candle socket 3 provided in its upper end. The opposite faces of the unit 2 are provided with recesses or offset areas 5 of an appropriate depth for a purpose which will hereinafter be fully explained.

As shown in Figure 4 of the drawings, the units 2 may be disposed in a vertical plane in groups in numerous combinations to afford varying decorative schemes.

Moreover, as shown in Fig. 3, a plurality of the units may be disposed on their sides in a horizontal plane, in which event the recesses 5 are preferably filled with water, sand, or the like, so

as to receive cut flowers, the stems of which have been cut short so as to be conveniently accommodated by the shallow recesses 5. Additionally, the recesses may serve as ash trays; may hold nut meats, or serve other uses both ornamental and utilitarian.

Figure 5 of the drawings depicts the candlesticks disposed vertically and supporting a bowl 10 by means of the stepped formation of the units. Manifestly, the bowl may contain flowers, fruit, and the like.

The arrangement illustrated in Fig. 6 shows four of the units arranged to receive cut flowers and four units arranged to serve as candlesticks.

While several combinations or arrangements have herein been shown and described, it will be understood that the same are merely illustrative of a very few of the countless combinations possible. Obviously, the number of groupings possible is limited only by the limit of artistic ingenuity of the decorator or hostess. Suffice it is to say that the invention affords possibilities of varying decorative schemes ever new, artistic and different.

What is claimed is—

1. In a device of the character described, a candlestick unit having one of its edges of stepped formation terminating with the provision of a candle socket, and an offset area provided in its vertical walls adapting said unit to serve as a receptacle when said unit is disposed with said offset uppermost.

2. In a device of the character described, a decorative unit having one of its edges of stepped formation and terminating with a candle socket in its upper surface when the unit occupies a vertical plane, and having an offset area in its side walls adapting it to serve as a receptacle for decorative items when said unit is disposed to occupy a horizontal plane, said unit having a symmetrical outline adapting it to be grouped with a plurality of similar units to form varying decorative combinations.

3. In a device of the character described, a decorative unit having a candle socket in its upper surface when the unit occupies a vertical plane, and having an offset area in its side walls adapting it to serve as a receptacle for decorative items when said unit is disposed to occupy a horizontal plane, the candle socket being rendered useless when in the latter position and the offset area being rendered useless as a receptacle when the device occupies its first mentioned vertical plane.

WILBUR L. ORME.